

13 December 2024

## Lady Grey Diamond Drilling

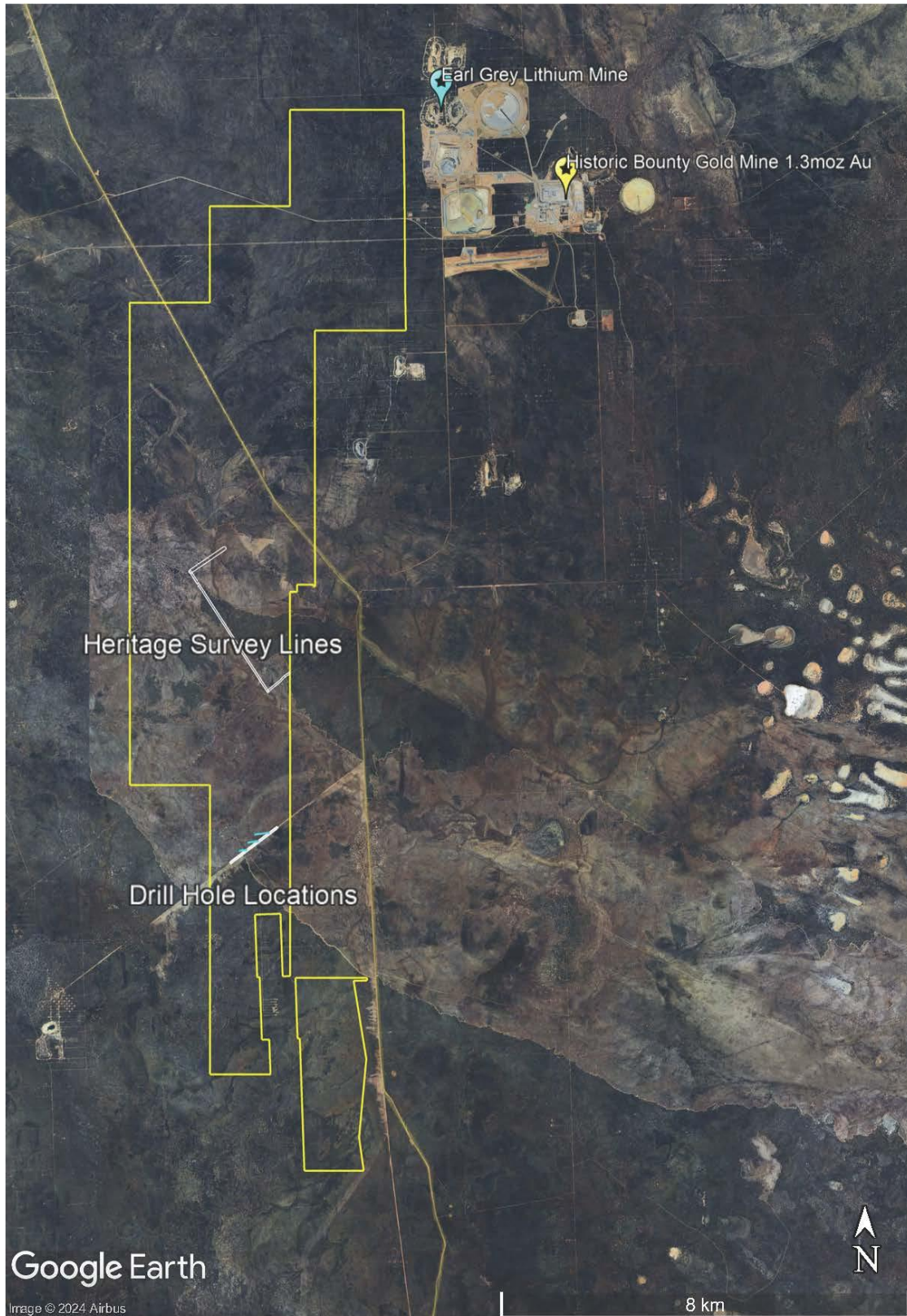
- **Drilling of the first diamond tail into the Modelled MLEM Conductor Plate under EM Line #6 underway**
- **Conductor plate target is aligned with a surface gold geochemical anomaly coincident with a regional structural zone favourable for hosting gold (ASX 24 Sept 2024)**
- **Historic Bounty Gold Mine which produced ~1.3 Moz Au<sup>1</sup> on Covalent Lithium's Mount Holland mine site, located adjacent to Lady Grey Gold Prospect**
- **On ground Heritage Survey of MLEM Line #1 completed**

---

**Lanthanein Resources Limited (ASX: LNR)** ("Lanthanein" or the "Company") is pleased to announce the commencement of the diamond drilling at the Company's Lady Grey Project at Mt Holland in WA's Yilgarn. The drilling is testing the modelled conductor plate under Moving Loop EM (MLEM) Survey Line #6 (refer ASX release 24 September 2024).

This is the second phase of the drilling programme with the three RC precollars to a maximum of 150m completed previously.

**Mr Brian Thomas, Technical Director of Lanthanein commented:** "Once again we are really excited to finally get the diamond bit spinning on the diamond tails testing the modelled EM conductor plate under Line #6 which coincides with a 75ppb UFF soil gold anomaly (ASX 22 April 2024). We continue to liaise with DEMIRS on the PoW to enable drill testing of the much higher ranking EM conductor plate under Line #1 which coincides with the 256 ppb Au UFF soil anomaly (ASX 22 April 2024) with the flora and fauna survey report lodged with DEMIRS and the on ground heritage survey by Ballardong Aboriginal Corporation and their heritage consultants now complete."



**Figure 1: Lady Grey Project tenement E77/2143 outline (yellow), approved PoW Drill Line (white) and drill hole traces (blue), Heritage Survey Lines (white) a Google Earth satellite photo image.**

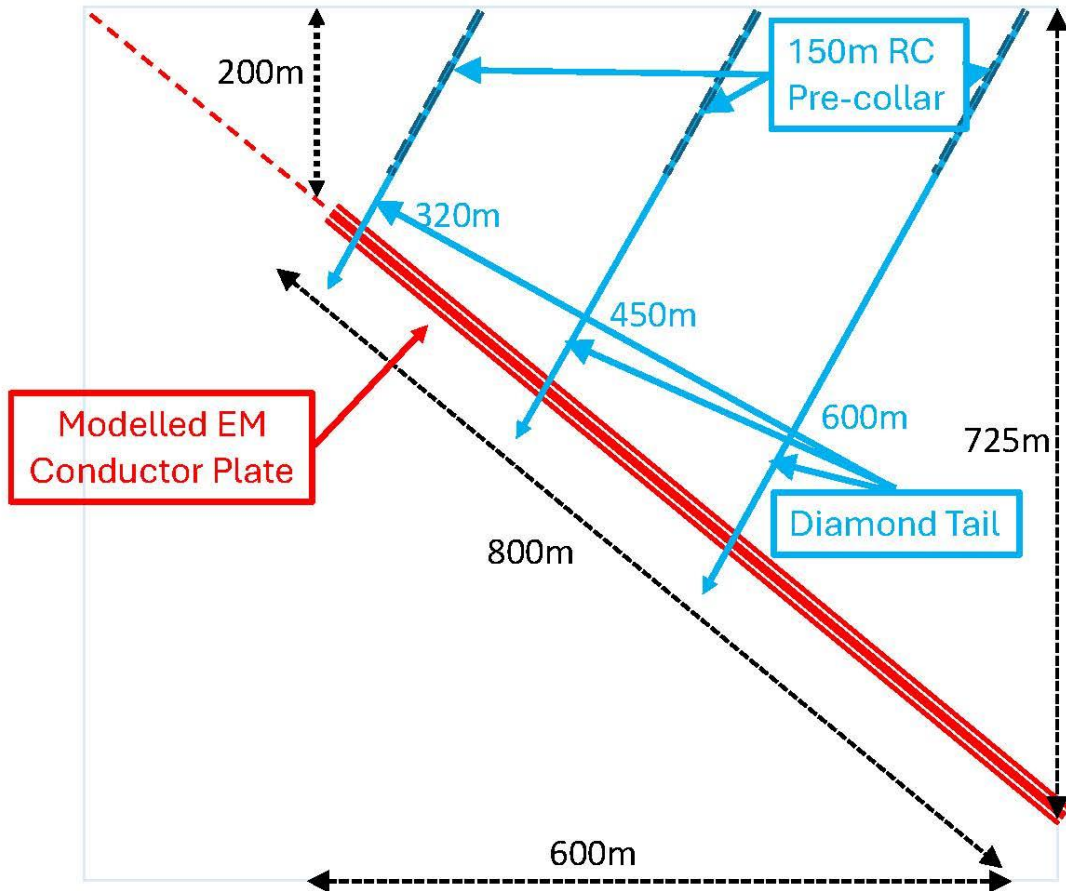
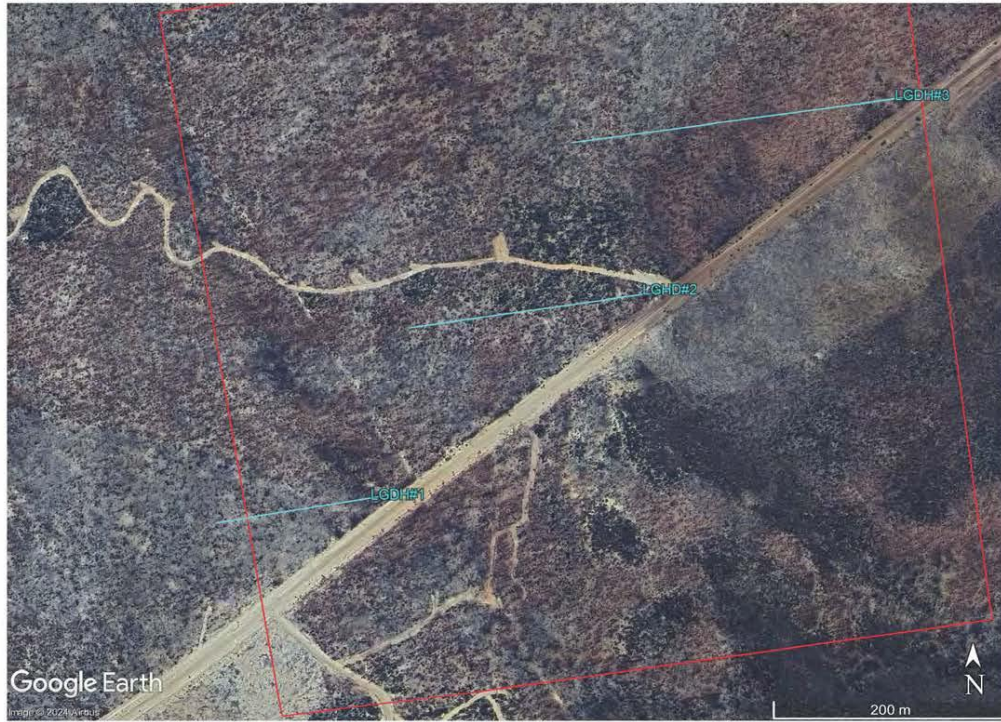
For personal use only



**Figure 2 : Topdrill diamond drilling rig on site at Lady Grey Project Mt Holland**

The modelled conductor plate under MLEM Line #6 is being drilled from the existing historical access road which links the old Laday Ada mine and the Marvel Loch Forrestania Road. As the modelled conductor plate is 200m below surface and dips to the east the drill testing will consist of the three RC precollars with diamond tail drill holes as proposed in Figure 3.

For personal use only



**Figure 3: Modelled Conductor Plate (in Red) with Drill Holes Traces (in Blue) superimposed on Google Earth image and cross section below**

For personal use only

**ADDRESS**

Level 8, 99 St Georges Terrace  
Perth WA 6000

**PHONE**

+61 (08) 9486 4036

**ABN**

96 095 684 389

**WEBSITE**

www.lanthanein.com

**Heritage Survey**

The on ground heritage avoidance survey for MLEM Line #1 access track and drill line (see Fig 1) has been carried out by Traditional Owners from the Ballardong Aboriginal Corporation with the assistance of their heritage consultants.

This announcement has been authorised for release by the Directors of the Company.

For additional information please visit our website at [www.lanthanein.com](http://www.lanthanein.com)

**LANTHANEIN RESOURCES LTD**

The information referred to in this announcement relates to the following source(s):

<sup>1</sup> source: <https://portergeo.com.au/index.asp>.

**Forward Looking Statements**

This announcement includes forward-looking statements that are only predictions and are subject to known and unknown risks, uncertainties, assumptions and other important factors, many of which are beyond the control of Lanthanein, the directors and the Company's management. Such forward-looking statements are not guarantees of future performance.

Examples of forward-looking statements used in this announcement include use of the words 'may', 'could', 'believes', 'estimates', 'targets', 'expects', or 'intends' and other similar words that involve risks and uncertainties. These statements are based on an assessment of present economic and operating conditions, and on a number of assumptions regarding future events and actions that, as at the date of announcement, are expected to take place.

Actual values, results, interpretations or events may be materially different to those expressed or implied in this announcement. Given these uncertainties, recipients are cautioned not to place reliance on forward-looking statements in the announcement as they speak only at the date of issue of this announcement. Subject to any continuing obligations under applicable law and the ASX Listing Rules, Lanthanein does not undertake any obligation to update or revise any information or any of the forward-looking statements in this announcement or any changes in events, conditions or circumstances on which any such forward-looking statement is based.

This announcement has been prepared by Lanthanein Resources Limited. The document contains background Information about Lanthanein Resources Limited current at the date of this announcement. The announcement is in summary form and does not purport to be all inclusive or complete. Recipients should conduct their own investigations and perform their own analysis in order to satisfy themselves as to the accuracy and completeness of the information, statements and opinions contained in this announcement. The announcement is for information purposes only. Neither this announcement nor the information contained in it constitutes an offer, invitation, solicitation or recommendation in relation to the purchase or sale of shares in any jurisdiction.

**ADDRESS**

Level 8, 99 St Georges Terrace  
Perth WA 6000

**PHONE**

+61 (08) 9486 4036

**ABN**

96 095 684 389

**WEBSITE**

[www.lanthanein.com](http://www.lanthanein.com)

The announcement may not be distributed in any jurisdiction except in accordance with the legal requirements applicable in such jurisdiction. Recipients should inform themselves of the restrictions that apply to their own jurisdiction as a failure to do so may result in a violation of securities laws in such jurisdiction. This announcement does not constitute investment advice and has been prepared without taking into account the recipient's investment objectives, financial circumstances or particular needs and the opinions and recommendations in this announcement are not intended to represent recommendations of particular investments to particular persons.

Recipients should seek professional advice when deciding if an investment is appropriate. All securities transactions involve risks, which include (among others) the risk of adverse or unanticipated market, financial or political developments. To the fullest extent of the law, Lanthanein Resources Limited, its officers, employees, agents and advisers do not make any representation or warranty, express or implied, as to the currency, accuracy, reliability or completeness of any information, statements, opinion, estimates, forecasts or other representations contained in this announcement. No responsibility for any errors or omissions from the announcement arising out of negligence or otherwise is accepted.

This release includes exploration results the Company has previously reported 22 & 29 April, 15 May & 16 July 2024. The Company confirms that it is not aware of any new information or data that materially affects the information included in previous announcements (as may be cross referenced in the body of this announcement) and that all material assumptions and technical parameters underpinning the exploration results continue to apply and have not materially changed.

For personal use only