



Unit 401 Level 4  
781 Pacific Highway  
Chatswood, NSW, 2067  
Australia  
Telephone 61 2 8379 5705

20 December 2024

ASX Market Announcements

## UPDATE ON EXPLORATION ACTIVITIES AT COPPER HILL PROJECT

Golden Cross Resources Ltd (“GCR”) advises the forthcoming exploration programs within its tenement EL6391 to enhance the Copper Hill Project as GCR awaits potential joint venture partners to join the project.

The Copper Hill project is located in the gold and copper prospective area within the Macquarie Arc volcanic belt in the Lachlan Fold Belt region in New South Wales, 50 kms north of the famous Cadia gold mine and approximately 60 kms south of the Boda Gold-Copper Prospect and the Kaiser Gold-Copper Prospect.

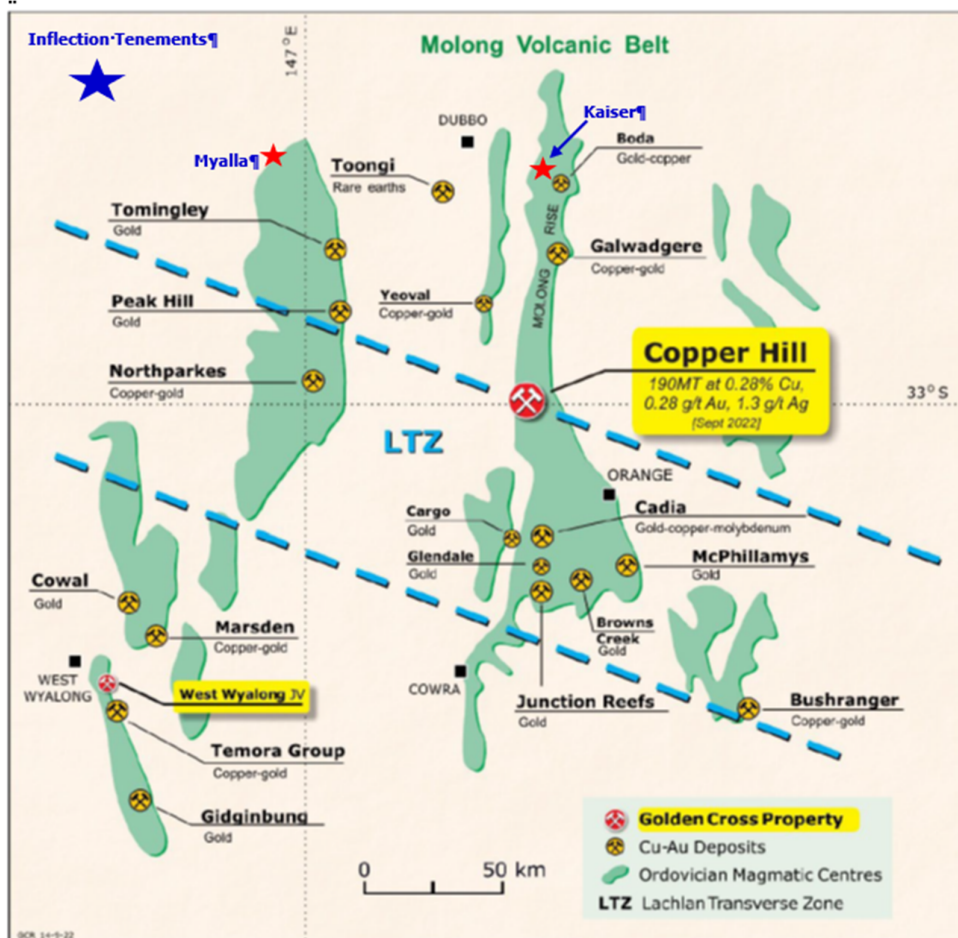
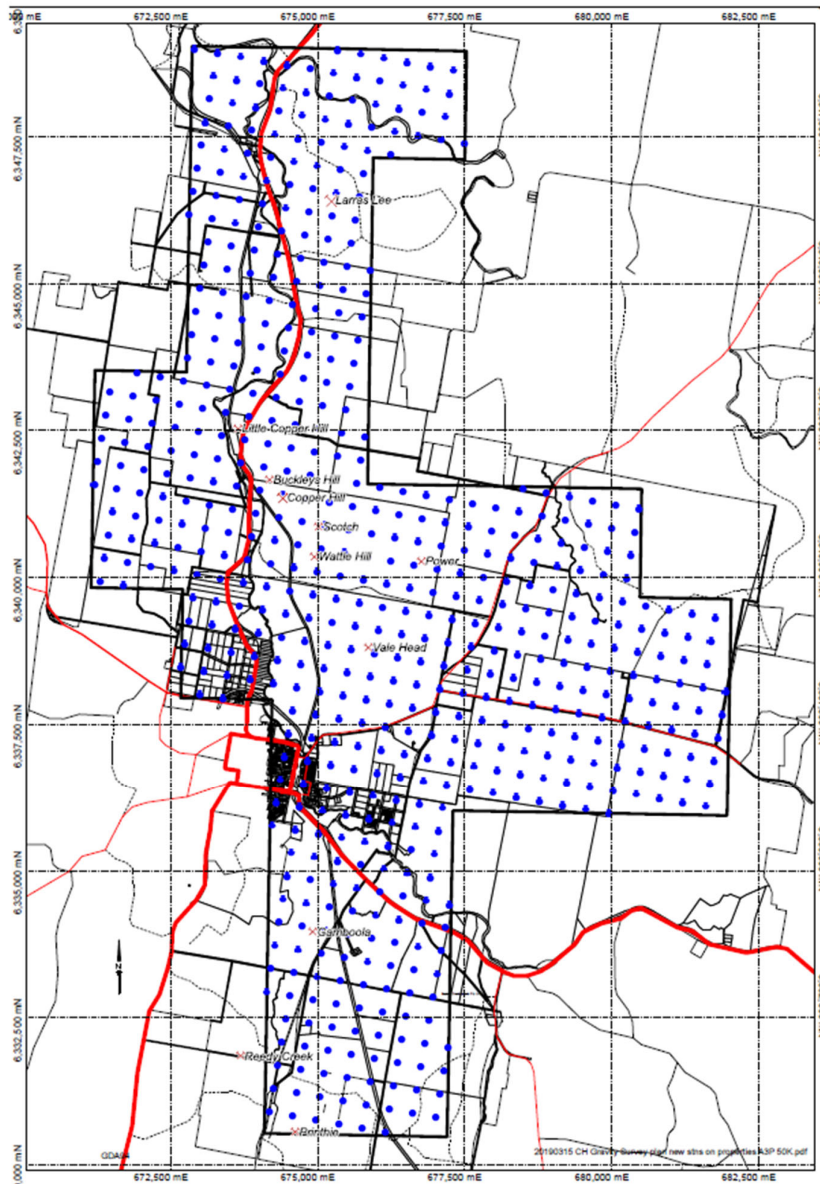


Figure 1: Location of Copper Hill Project

For personal use only

The exploration activities are planned in the following stages:

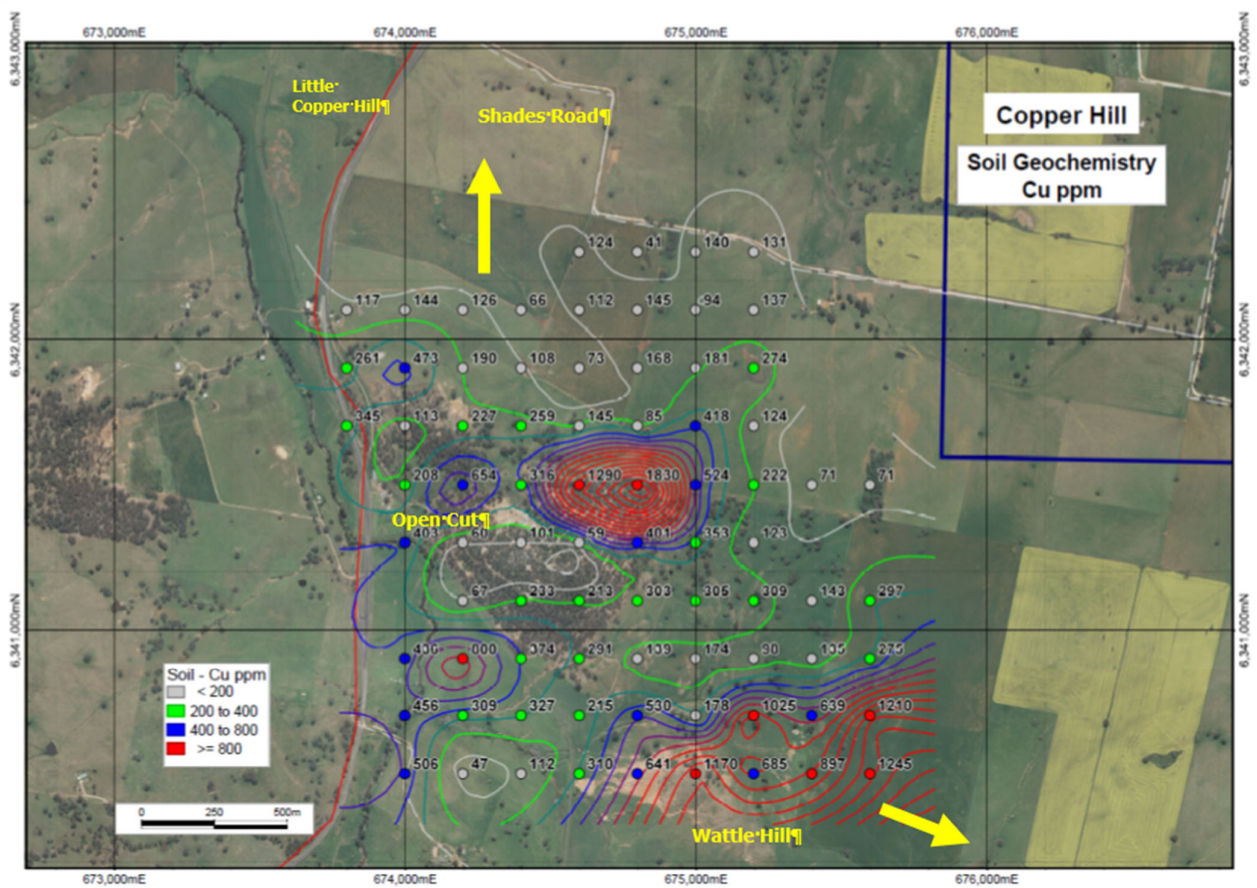
1. **Stage 1 - Geophysics:** For completion in January 2025, conduct initial detail gravity surveys over the whole of the Copper Hill tenement covering areas not explored previously to delineate subsurface structures, and subsurface intrusive bodies. This initial program will be for 580 stations at 400m intervals (see **Figure 2**). These surveys will supplement the good data sets of detailed ground magnetics and Induced Polarisation already held by GCR from prior years exploration programs.



**Figure 2: Planned Detail Gravity Survey 400m station spacing for 580 stations**

2. **Stage 2 - Geophysics:** For completion in February 2025, subject to the results of the initial gravity surveys conduct infill surveys of 200m and/or 100m spacing over selected areas to identify areas for drilling.
3. **Stage 3 – Geochemistry:** For completion in February/March 2025, extension of surface soil sampling applying modern analytical techniques to provide geochemical data missing from historical work, which could provide vectors to mineralization.

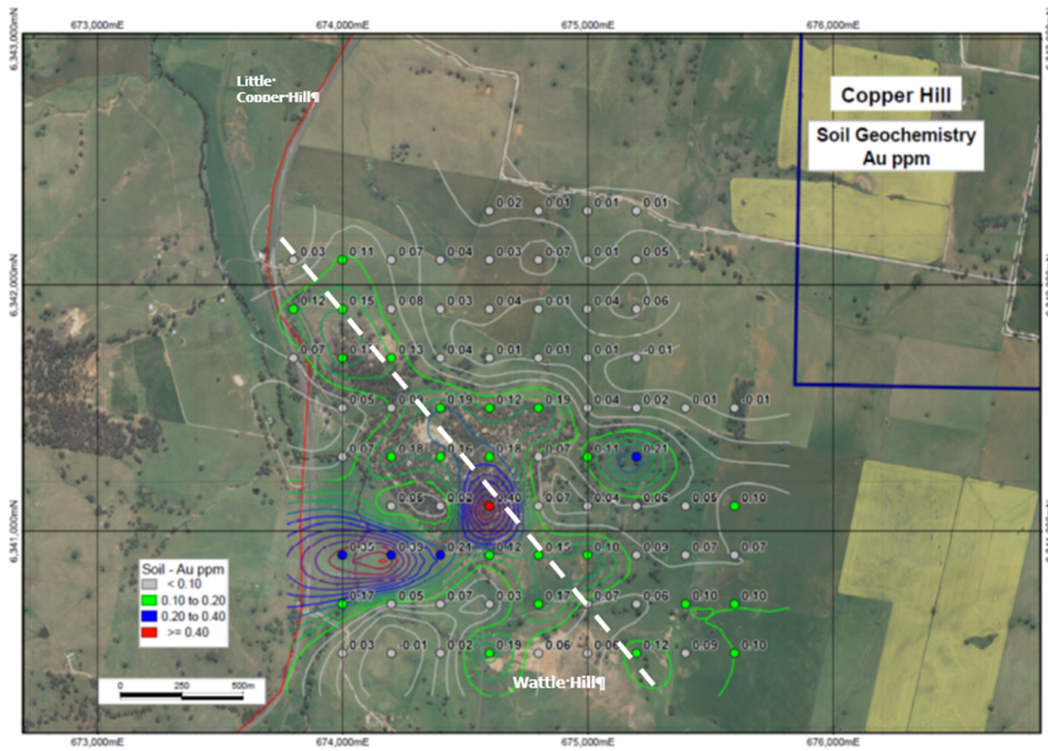
The aim is to test for extensions of the elevated copper zone open to the east from Wattle Hill and to the north towards Shades Road prospect, where limited previous low tenor results suggested subsurface source, and northwest towards Little Copper Hill, where skarn mineralisation occurs (see **Figures 3 and 4**). Further extension stages northwards towards Larras Lee are under review (see **Figure 5**).



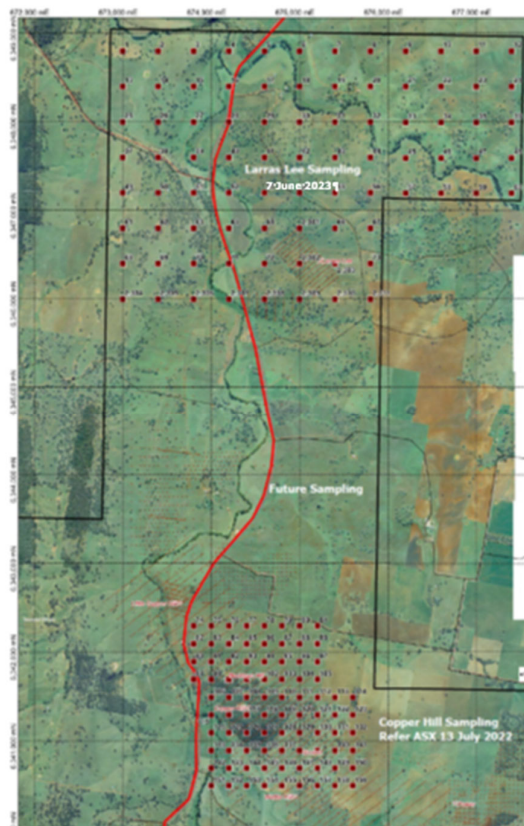
**Figure 3: Copper Hill – Soil Copper Results 2022<sup>1</sup>**

<sup>1</sup> See GCR ASX Release of 13 July 2022. GCR confirms that it is not aware of any new information or data that materially affects the information included in the original ASX announcements.

For personal use only



**Figure 4: Copper Hill – Soil Copper Results 2022<sup>1</sup>**



**Figure 5: Copper Hill: Northern extension areas**

For personal use only



Subject to the results from the geophysics programs GCR will consider application of Magnetotellurics (MT) and Ambient Noise Tomography (ANT) technology and a drilling program in the Q3/4 2025.

GCR has been contacting landholders for access consents and a contractor is available to complete the Stage 1 surveys in January 2025 subject to execution of contract.

***Competent Person Statement***

*The information in this report that relates to Exploration Results is based on information compiled by Mr Bret Ferris, who is a Member of the Australasian Institute of Geoscientists (AIG). Mr Ferris is an exploration consultant to Golden Cross Resources Ltd and has sufficient experience relevant to the style of mineralisation and type of deposit under consideration and to the activity he is undertaking to qualify as a Competent Person as defined in the 2012 Edition of the “Australasian Code for Reporting of Exploration Results, Mineral Resources and Ore Reserves”. Mr Ferris consents to the inclusion in this report of the matters based on that information in the form and context in which it appears.*

***Forward-Looking Statement***

*This document may include forward-looking statements. Forward-looking statements include, but are not limited to, statements concerning planned exploration program and other statements that are not historical facts. When used in this document, the words such as “could”, “plan”, “estimate”, “expect”, “intend”, “may”, “potential”, “should” and similar expressions are forward-looking statements. Although Golden Cross Resources Ltd believes that its expectations reflected in these forward-looking statements are reasonable, such statements involve risks and uncertainties and no assurance can be given that actual results will be consistent with these forward-looking statements.*

**Authorised for release by the Board of Directors:**

Jordan Li  
Executive Chairman

**Contact:**

Patrick Sam Yue – Company Secretary  
Tel: +612 8379 5700  
Email: psy@goldencross.com.au