



ASX ANNOUNCEMENT

10th January 2025

December 2024 Quarterly Activities Report

HIGHLIGHTS

- **Completed maiden manganese drilling program with 19 Reverse Circulation (RC) drill holes covering 1,701 metres. Coincident geophysical, geochemical and lithological targets tested by drilling.**
- **Drill samples are currently being assayed at ALS Laboratory in Brisbane. Updates on assay results will follow once available.**
- **Assay results from the Basin area confirm massive manganese mineralisation with grades up to 54.5% Mn (ASX Announcement 24 October 2024).**
- **Soil sampling results returned from Basin area (ASX Announcement 10 December 2024).**

Great Dirt Resources Limited (ASX:GR8) ("the Company" or "Great Dirt") is pleased to present its Quarterly Activities Report and accompanying Appendix 5B for the period ended 31st December 2024 (the Quarter).

Exploration Summary

Drilling Completed and Soil Samples Returned (10th December 2024)¹

Great Dirt successfully completed its maiden drilling campaign at its 100% owned Doherty and Basin Manganese Project in New South Wales.

A total of 19 Reverse Circulation (RC) drill holes were completed, spanning 1,701 metres (Figure 1). These drill targets represent the culmination of 12 months of diligent exploration work. Targets were identified through coinciding anomalies defined by extensive soil and rock chip sampling in conjunction with Gradient Array Induced Polarisation (GAIP) and gravity geophysical surveys. (GR8 ASX release 6th November 2024)².

All drill samples have been submitted to ALS Laboratory in Brisbane for analysis. The Company will provide an update to the market as soon as assay results are available.

¹ GR8 ASX Announcement 10/12/2024: [Drilling Completed and Soil Samples Returned](#)

² GR8 ASX Announcement 06/11/2024: [Drilling Commences at the Doherty Manganese Project](#)

For personal use only

The successful drilling program is a significant step forward in confirming the potential for high-grade manganese mineralisation at the Doherty and Basin Manganese Project.

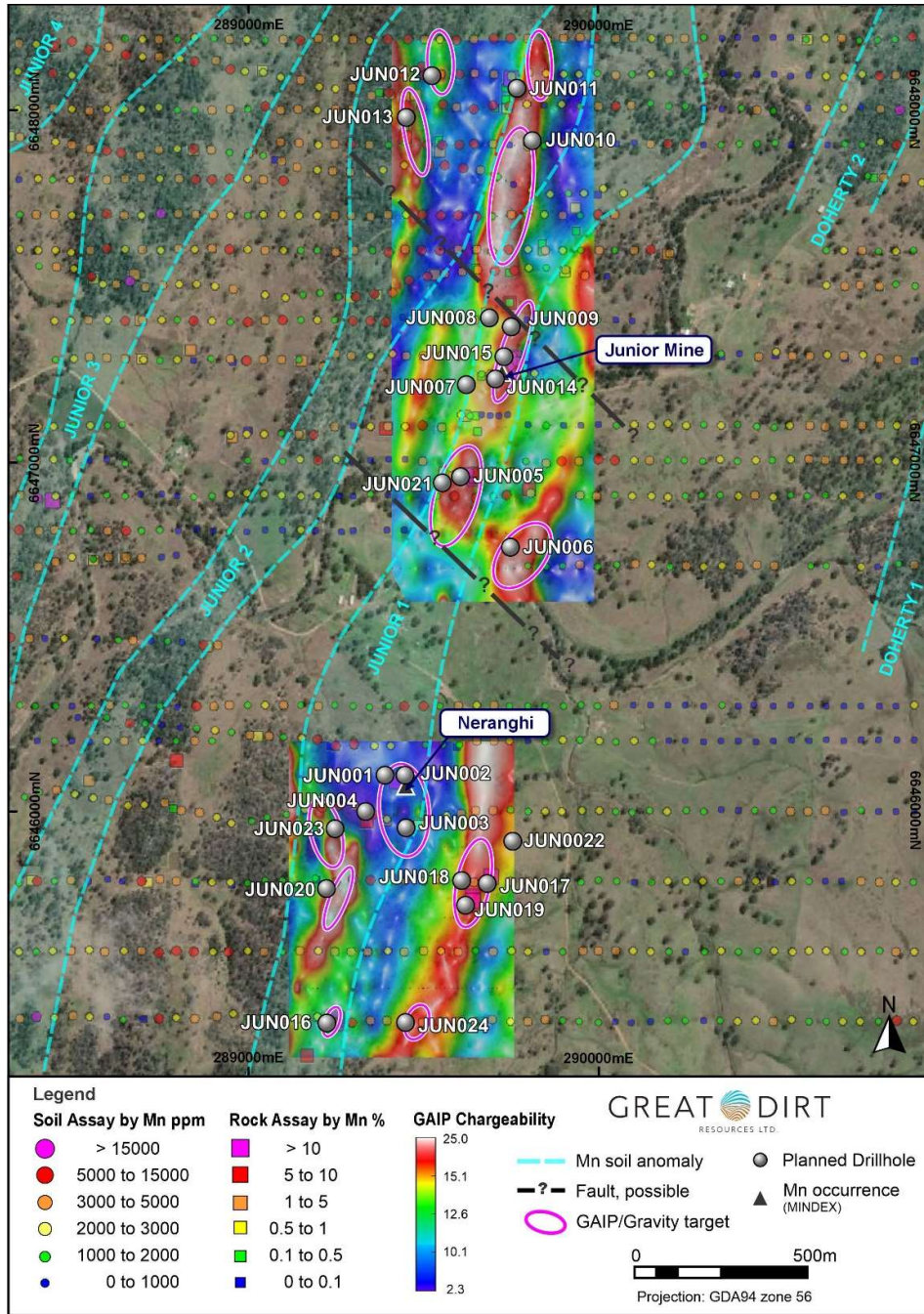


Figure 1: Location of completed drills holes plotted on chargeability survey image (hot colours red/white) over satellite imagery. GAIP and Gravity Targets are shown with geochemical soil and rock chip samples (ASX Announcement 6 November 2024).

Significant Manganese confirmed at Basin Project with new occurrence located (24th October 2024)³

Preliminary exploration at the Basin Farm and Girraween areas, confirmed the presence of massive manganese mineralisation with rock chip samples returning grades of up to 54.5% Mn (GRR272) (see Figure 2, 3 and 4).

A total of 10 rock chip and 127 soil samples were collected from the Basin Project comprising both the Basin Farm and Girraween manganese occurrences. These samples were taken from areas of existing workings and other identified features of interest including obvious elongate magnetic structures. Sighter soil sample lines were conducted to delineate areas of interest and refine stratigraphic understanding for future exploration.

Girraween consists of two groups of workings. Girraween (150081) contains scattered pits on numerous lenses over a length of 37m in length and 15m in width, with individual lenses reaching up to 4m wide. The mineralisation is stratiform to massive manganese of submarine volcanic origin.

Nearby, Girraween (150082) comprises shallow pits 2m wide exploiting massive psilomelane with abundant outcrop mineralisation over 35m. Lenses extend across ridges to the north and south.

Five rock chip samples from various locations at Girraween returned manganese grades ranging between 45.1% and 52.4% Mn (samples GRR276-280, Figure 2). Ongoing work will focus south towards Basin Farm.

Cautionary Statement: The rock chip samples reported are from outcrop and float samples and is not as representative as continuous chip channel sampling or drilling. Rocks were sampled selectively to ensure a high-level of presentivity of rock types observed at each location.

Basin Farm workings include small pits 2m wide and remnant stockpiled manganese oxide, likely of submarine volcanic origin. Of most interest is sample GRR272, located midway between Basin Farm and Girraween, which returned the best result of 54.5% Mn. This area and extents to Basin Farm and Girraween will be tested further.

Additional sampling is being planned to target key stratigraphy and areas of interest. This work is expected to commence this 2025 calendar year.

³ GR8 ASX Announcement 24/10/2024: [Significant Manganese confirmed at Basin Project with new occurrence located](#)

For personal use only

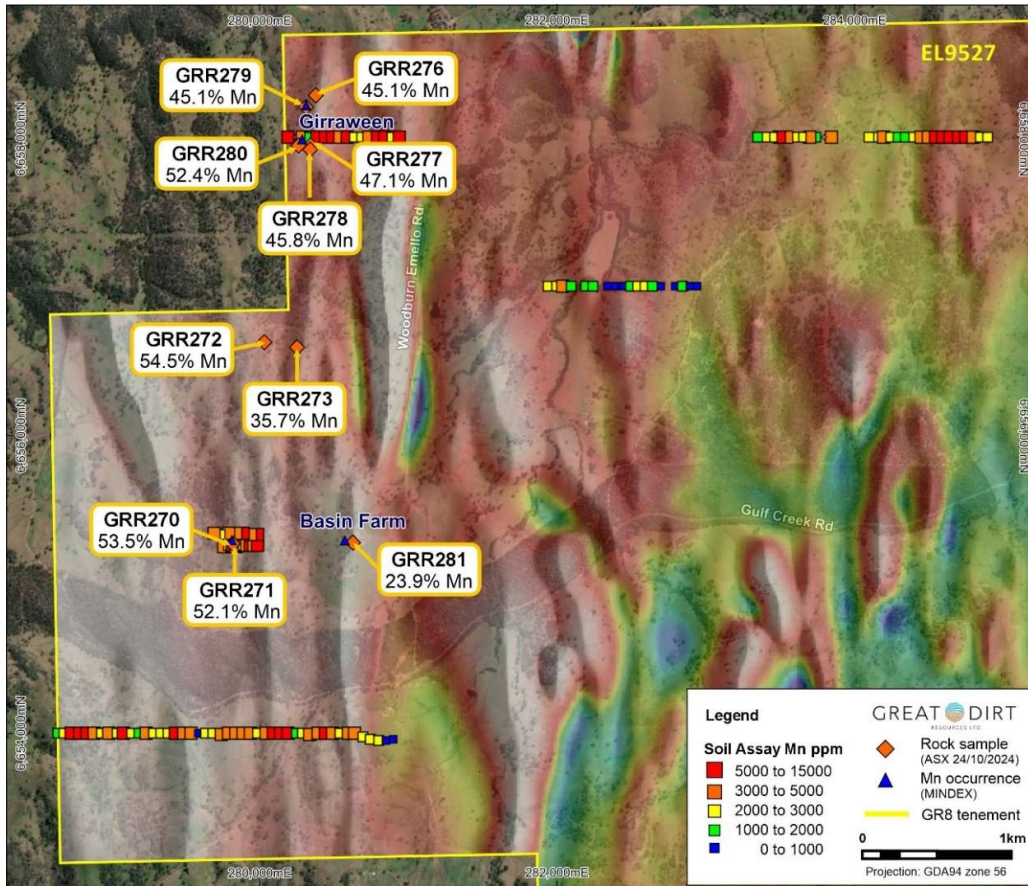


Figure 2: Basin area showing recent Soils Mn ppm assays and rock assay results overlaid on TMI and satellite imagery background. Note rock samples with exceptionally high assays up to 54.5% Mn – ASX Announcement 10 December 2024.



Figure 3: High-grade massive black manganese oxide mineralisation, 54.50% Mn, Sample GRR272



Figure 4: High-grade massive black manganese oxide mineralisation, 53.50% Mn, Sample GRR270

For personal use only

Table 1: Basin area rock chip sample results (Analyses by Australian Laboratory Services (ALS) Brisbane. Methods ME-ICP61 and over limits by Mn-OG62)

| SAMPLE | Sample Type | East GDA94z56 | North GDA94z56 | Mn % | Al2O3 % | Fe2O3 % | P2O5 % |
|--------|-------------|---------------|----------------|-------|---------|---------|--------|
| GRR270 | ROCK | 279815 | 6655277 | 53.50 | 3.25 | 1.63 | 0.27 |
| GRR271 | ROCK | 279822 | 6655276 | 52.10 | 4.84 | 1.12 | 0.32 |
| GRR272 | ROCK | 280030 | 6656634 | 54.50 | 2.57 | 2.02 | 0.14 |
| GRR273 | ROCK | 280251 | 6656592 | 35.70 | 2.42 | 16.08 | 0.36 |
| GRR276 | ROCK | 280379 | 6658290 | 45.10 | 1.10 | 1.57 | 0.19 |
| GRR277 | ROCK | 280341 | 6657952 | 47.10 | 2.89 | 1.12 | 0.13 |
| GRR278 | ROCK | 280337 | 6657932 | 45.80 | 3.14 | 12.80 | 0.27 |
| GRR279 | ROCK | 280318 | 6658213 | 45.10 | 4.31 | 4.89 | 0.53 |
| GRR280 | ROCK | 280270 | 6657950 | 52.40 | 2.57 | 5.20 | 0.17 |
| GRR281 | ROCK | 280627 | 6655282 | 23.90 | 0.53 | 0.57 | 0.08 |

For personal use only

CORPORATE

The Company's Quarterly Cashflow Report (Appendix 5B) follows this activities report. The Company had \$2.684 million in cash at 31 December 2024. Cash outflows for the Quarter were in line with management expectations. Great Dirt is adequately funded to continue its current activities and will continue to demonstrate appropriate fiscal management.

MATERIAL EVENTS SUBSEQUENT TO THE END OF QUARTER

There were no material events subsequent to the end of the quarter.

GUIDANCE NOTE 23 DISCLOSURES

Details of mining exploration activities

Details of exploration activities during the quarter are set out above.

Details of mining production and development activities

No production and development activities were undertaken during the quarter.

Details of tenement activities

The tenement schedule included below shows all holdings and any change for the Company and its subsidiaries.

Details of related party payments

The aggregate amount of payments to related parties and their associates included in the current quarter cash flows from operating activities was \$100,000, comprising director fees and remuneration (inclusive of superannuation).

For personal use only

FINANCE AND USE OF FUNDS

Pursuant to ASX listing rule 5.3.4, the Company provides a comparison of its actual expenditure against the estimated expenditure on items set out in section 2.6 of the Company's Prospectus.

| Use of Funds | Funds allocated pursuant to Prospectus (8 Quarters) \$ | Actual cash expenditure to the quarter ended 31 December 2024 (Q5) \$ | Balance Remaining \$ |
|-------------------------------|-----------------------------------------------------------|--------------------------------------------------------------------------|-------------------------|
| Land access and environmental | 300,000 | 108,384 | 191,616 |
| Exploration on the Projects | 2,900,000 | 1,384,382 | 1,515,618 |
| Expenses of the Offers | 264,444 | 261,491 | 2,953 |
| Capital raising fee | 300,000 | 300,000 | - |
| Working capital | 1,528,073 | 775,493 | 752,580 |
| Total | 5,292,517 | 2,829,750 | 2,462,767 |


TENEMENT SCHEDULE (AS AT 31 DECEMBER 2024)

Details of the Tenements are set out below (all 100%).

| Tenement | Area (units) | Grant Date | Expiry Date |
|----------|--------------|-----------------------------------------------|-----------------------------------------------|
| EL9527 | 56 | 8 February 2023 | 8 February 2026 |
| E45/6949 | 68 | Pending - Tenement held by Great Dirt Pty Ltd | Pending – Tenement held by Great Dirt Pty Ltd |
| E45/6950 | 29 | Pending – Tenement held by Great Dirt Pty Ltd | Pending – Tenement held by Great Dirt Pty Ltd |
| E45/6863 | 21 | Pending – Tenement held by Great Dirt Pty Ltd | Pending – Tenement held by Great Dirt Pty Ltd |

Authorised for release to the ASX by the Board of Great Dirt Resources LTD.

For further information, please visit or contact:

 www.greatdirt.com.au

 info@greatdirt.com.au

For personal use only

About Great Dirt Resources Ltd

Great Dirt's **Doherty and Basin Projects** are contained within EL 9527, located near the Barraba township, in northern NSW. These projects are prospective for high-grade manganese, with both projects having produced metallurgical and battery grade manganese historically. The Doherty Project comprises the old Doherty and Junior Mines, plus other workings and occurrences of manganese. The Basin Project contains several smaller manganese workings.

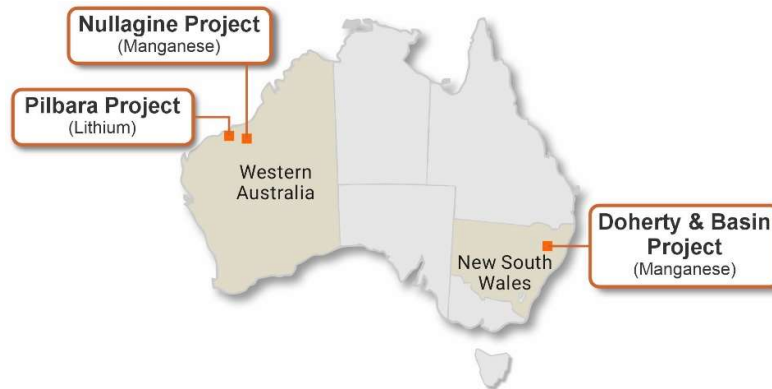
From 1941, for two decades, mines of the Doherty Project produced around 9,000 tonnes of battery and metallurgical grade manganese, both from open-cut and underground operations. The battery grade ore was delivered to Eveready in Sydney for use in dry cell batteries, the metallurgical grade ore was purchased by BHP for use in steel production.

Great Dirt believes that historical work, while having discovered manganese, is unlikely to have located all sources in the area. Floaters, large rock fragments in the soil profile, of high-grade manganese ore reported outside known mine areas are a direct indication of unidentified manganese mineralisation. Additionally, notes on the mineral occurrences of the area refer to extensions and deposits along strike that were not mined.

A program of modern, systematic, geochemical and geophysical surveys will test known targets and their extents and could locate previously unrecognised blind deposits. Subsurface geophysical methods and drilling is likely to yield further targets that could be developed into projects to produce metallurgical and battery grade manganese.

Great Dirt has significantly expanded its manganese exploration portfolio following the acquisition of two tenements (E45/6949 and E45/6950 – the '**Nullagine Project**'), ~ 50km northeast of Consolidated Minerals Woodie Woodie manganese mine, in the Shire of East Pilbara, Western Australia.

Following a successful ballot application, Great Dirt has expanded its WA portfolio to include a position in one of the most prominent lithium regions in Western Australia and worldwide. Tenement E45/6863 – '**Pilbara Project**' is located approximately 43km from Pilbara Minerals (ASX:PLS), Pilgangoora Lithium Project, one of the largest hard-rock lithium deposits in the world.



Competent Person's Statement

Information in this announcement that relates to exploration results is based on and fairly represents information and supporting documentation prepared and compiled by Mr Michael Leu, who is a Member of the Australian Institute of Geoscientists and a Member of the Australasian Institute of Mining and Metallurgy. Mr Leu is the geological consultant for Great Dirt Resources Ltd. Mr Michael Leu has sufficient experience, which is relevant to the style of mineralisation and type of deposit under consideration and to the activity which he is undertaking to qualify as a Competent Person, as defined in the 2012 Edition of the Australasian Code for Reporting Exploration Results, Mineral Resources and Ore Reserves. Mr Michael Leu consents to the inclusion in the announcement of the matters based on this information in the form and context in which it appears.

No New Information

Except where explicitly stated, this announcement contains references to prior exploration results, all of which have been cross-referenced to previous market announcements made by the Company. The Company confirms that it is not aware of any new information or data that materially affects the information included in the relevant market announcements.

Forward Looking Statement

This report contains forward looking statements concerning the projects owned by Great Dirt Resources Ltd. If applicable, statements concerning mining reserves and resources may also be deemed to be forward looking statements in that they involve estimates based on specific assumptions. Forward-looking statements are not statements of historical fact and actual events and results may differ materially from those described in the forward-looking statements as a result of a variety of risks, uncertainties and other factors. Forward looking statements are based on management's beliefs, opinions and estimates as of the dates the forward looking statements are made and no obligation is assumed to update forward looking statements if these beliefs, opinions, and estimates should change or to reflect other future developments.

Appendix 5B

Mining exploration entity or oil and gas exploration entity quarterly cash flow report

Name of entity

Great Dirt Resources Ltd

ABN

44 670 840 301

Quarter ended ("current quarter")

31 December 2024

| Consolidated statement of cash flows | Current quarter \$A'000 | Year to date (6 months) \$A'000 |
|-----------------------------------------------------------|----------------------------|---------------------------------------|
| 1. Cash flows from operating activities | | |
| 1.1 Receipts from customers | - | - |
| 1.2 Payments for | | |
| (a) exploration & evaluation (if expensed) | - | - |
| (b) development | - | - |
| (c) production | - | - |
| (d) staff costs | (45) | (82) |
| (e) administration and corporate costs | (86) | (193) |
| 1.3 Dividends received (see note 3) | - | - |
| 1.4 Interest received | 53 | 73 |
| 1.5 Interest and other costs of finance paid | - | - |
| 1.6 Income taxes paid | - | - |
| 1.7 Government grants and tax incentives | - | - |
| 1.8 Other (rental income) | - | 1 |
| 1.9 Net cash from / (used in) operating activities | (78) | (201) |
| 2. Cash flows from investing activities | | |
| 2.1 Payments to acquire: | | |
| (a) entities | - | - |
| (b) tenements | - | - |
| (c) property, plant and equipment | (1) | (4) |
| (d) exploration & evaluation | (320) | (581) |
| (e) investments | - | - |
| (f) other non-current assets | - | - |

For personal use only

| Consolidated statement of cash flows | | Current quarter \$A'000 | Year to date (6 months) \$A'000 |
|--------------------------------------|-------------------------------------------------------|----------------------------|---------------------------------------|
| 2.2 | Proceeds from the disposal of: | | |
| | (a) entities | - | - |
| | (b) tenements | - | - |
| | (c) property, plant and equipment | - | - |
| | (d) investments | - | - |
| | (e) other non-current assets | - | - |
| 2.3 | Cash flows from loans to other entities | - | - |
| 2.4 | Dividends received (see note 3) | - | - |
| 2.5 | Other (provide details if material) | - | - |
| 2.6 | Net cash from / (used in) investing activities | (321) | (585) |

| | | | |
|-------------|-----------------------------------------------------------------------------------------|------------|-----------|
| 3. | Cash flows from financing activities | | |
| 3.1 | Proceeds from issues of equity securities (excluding convertible debt securities) | - | 34 |
| 3.2 | Proceeds from issue of convertible debt securities | - | - |
| 3.3 | Proceeds from exercise of options | - | - |
| 3.4 | Transaction costs related to issues of equity securities or convertible debt securities | (1) | (7) |
| 3.5 | Proceeds from borrowings | - | - |
| 3.6 | Repayment of borrowings | - | - |
| 3.7 | Transaction costs related to loans and borrowings | - | - |
| 3.8 | Dividends paid | - | - |
| 3.9 | Other (provide details if material) | - | - |
| 3.10 | Net cash from / (used in) financing activities | (1) | 27 |

| | | | |
|-----------|------------------------------------------------------------------------------|-------|-------|
| 4. | Net increase / (decrease) in cash and cash equivalents for the period | | |
| 4.1 | Cash and cash equivalents at beginning of period | 3,084 | 3,443 |
| 4.2 | Net cash from / (used in) operating activities (item 1.9 above) | (78) | (201) |
| 4.3 | Net cash from / (used in) investing activities (item 2.6 above) | (321) | (585) |
| 4.4 | Net cash from / (used in) financing activities (item 3.10 above) | (1) | 27 |

For personal use only

| Consolidated statement of cash flows | | Current quarter \$A'000 | Year to date (6 months) \$A'000 |
|--------------------------------------|---------------------------------------------------|----------------------------|---------------------------------------|
| 4.5 | Effect of movement in exchange rates on cash held | - | - |
| 4.6 | Cash and cash equivalents at end of period | 2,684 | 2,684 |

| 5. Reconciliation of cash and cash equivalents at the end of the quarter (as shown in the consolidated statement of cash flows) to the related items in the accounts | | Current quarter \$A'000 | Previous quarter \$A'000 |
|-------------------------------------------------------------------------------------------------------------------------------------------------------------------------|----------------------------------------------------------------------------------|----------------------------|-----------------------------|
| 5.1 | Bank balances | 44 | 144 |
| 5.2 | Call deposits | 2,640 | 2,940 |
| 5.3 | Bank overdrafts | - | - |
| 5.4 | Other (provide details) | - | - |
| 5.5 | Cash and cash equivalents at end of quarter (should equal item 4.6 above) | 2,684 | 3,084 |

| 6. Payments to related parties of the entity and their associates | | Current quarter \$A'000 |
|----------------------------------------------------------------------------------------------------------------------------------------------------------------|-----------------------------------------------------------------------------------------|----------------------------|
| 6.1 | Aggregate amount of payments to related parties and their associates included in item 1 | 45 |
| 6.2 | Aggregate amount of payments to related parties and their associates included in item 2 | 55 |
| <p>Note: if any amounts are shown in items 6.1 or 6.2, your quarterly activity report must include a description of, and an explanation for, such payments</p> | | |

Payments included in item 6.1 and 6.2 are related to fees and remuneration (inclusive of superannuation) paid to Directors.

For personal use only

| 7. Financing facilities | Total facility amount at quarter end \$A'000 | Amount drawn at quarter end \$A'000 |
|-------------------------------------------------------------------------------------------------------------------------------------------------------------------------------------------------------------------------------------------------------------------------------------------------------------------------------------------------|-----------------------------------------------------|--------------------------------------------|
| <i>Note: the term "facility" includes all forms of financing arrangements available to the entity.</i> | | |
| <i>Add notes as necessary for an understanding of the sources of finance available to the entity.</i> | | |
| 7.1 Loan facilities | - | - |
| 7.2 Credit standby arrangements | - | - |
| 7.3 Other | - | - |
| 7.4 Total financing facilities | - | - |
| 7.5 Unused financing facilities available at quarter end | | - |
| 7.6 Include in the box below a description of each facility above, including the lender, interest rate, maturity date and whether it is secured or unsecured. If any additional financing facilities have been entered into or are proposed to be entered into after quarter end, include a note providing details of those facilities as well. | | |
| * N/A | | |

| 8. Estimated cash available for future operating activities | \$A'000 |
|-------------------------------------------------------------------------------------------------------------------------------------------------------------------------------------------------------------------------------------|----------------|
| 8.1 Net cash from / (used in) operating activities (Item 1.9) | (78) |
| 8.2 (Payments for exploration & evaluation classified as investing activities) (item 2.1(d)) | (320) |
| 8.3 Total relevant outgoings (Item 8.1 + Item 8.2) | (398) |
| 8.4 Cash and cash equivalents at quarter end (Item 4.6) | 2,684 |
| 8.5 Unused finance facilities available at quarter end (Item 7.5) | - |
| 8.6 Total available funding (Item 8.4 + Item 8.5) | 2,684 |
| 8.7 Estimated quarters of funding available (Item 8.6 divided by Item 8.3) | 6.74 |
| <i>Note: if the entity has reported positive relevant outgoings (ie a net cash inflow) in item 8.3, answer item 8.7 as "N/A". Otherwise, a figure for the estimated quarters of funding available must be included in item 8.7.</i> | |
| 8.8 If Item 8.7 is less than 2 quarters, please provide answers to the following questions: | |
| 8.8.1 Does the entity expect that it will continue to have the current level of net operating cash flows for the time being and, if not, why not? | |
| N/A | |
| 8.8.2 Has the entity taken any steps, or does it propose to take any steps, to raise further cash to fund its operations and, if so, what are those steps and how likely does it believe that they will be successful? | |
| N/A | |
| 8.8.3 Does the entity expect to be able to continue its operations and to meet its business objectives and, if so, on what basis? | |
| N/A | |

For personal use only

Note: where item 8.7 is less than 2 quarters, all of questions 8.8.1, 8.8.2 and 8.8.3 above must be answered.

Compliance statement

- 1 This statement has been prepared in accordance with accounting standards and policies which comply with Listing Rule 19.11A.
- 2 This statement gives a true and fair view of the matters disclosed.

Date: 10 January 2025

Authorised by: "By the Board"

(Name of body or officer authorising release – see note 4)

Notes

1. This quarterly cash flow report and the accompanying activity report provide a basis for informing the market about the entity's activities for the past quarter, how they have been financed and the effect this has had on its cash position. An entity that wishes to disclose additional information over and above the minimum required under the Listing Rules is encouraged to do so.
2. If this quarterly cash flow report has been prepared in accordance with Australian Accounting Standards, the definitions in, and provisions of, *AASB 6: Exploration for and Evaluation of Mineral Resources* and *AASB 107: Statement of Cash Flows* apply to this report. If this quarterly cash flow report has been prepared in accordance with other accounting standards agreed by ASX pursuant to Listing Rule 19.11A, the corresponding equivalent standards apply to this report.
3. Dividends received may be classified either as cash flows from operating activities or cash flows from investing activities, depending on the accounting policy of the entity.
4. If this report has been authorised for release to the market by your board of directors, you can insert here: "By the board". If it has been authorised for release to the market by a committee of your board of directors, you can insert here: "By the [name of board committee – eg Audit and Risk Committee]". If it has been authorised for release to the market by a disclosure committee, you can insert here: "By the Disclosure Committee".
5. If this report has been authorised for release to the market by your board of directors and you wish to hold yourself out as complying with recommendation 4.2 of the ASX Corporate Governance Council's *Corporate Governance Principles and Recommendations*, the board should have received a declaration from its CEO and CFO that, in their opinion, the financial records of the entity have been properly maintained, that this report complies with the appropriate accounting standards and gives a true and fair view of the cash flows of the entity, and that their opinion has been formed on the basis of a sound system of risk management and internal control which is operating effectively.== == == == ==