

13 January 2025

NOVITAS FINALIZES NON-COVERAGE DETERMINATION

DUNEDIN, New Zealand – Cancer diagnostics company Pacific Edge (NZX, ASX: PEB) today notes that Novitas, the Medicare Administrative Contractor with jurisdiction for our US laboratory, on Thursday 9 January 2025 finalized a non-coverage determination that would end reimbursement for Cxbladder Triage, Detect and Monitor by Medicare.

The draft Local Coverage Determination (LCD) ‘Genetic testing for oncology’ (DL39365) has been finalized under a new title ‘Genetic Testing in Oncology: Specific Tests’ (L39365). The LCD reverses Novitas’ July 2020 determination¹ that provided for Medicare coverage of Cxbladder. If not challenged, the finalized LCD would become effective in 45 days from the date of publishing, with reimbursement of Pacific Edge’s Cxbladder tests Triage, Detect and Monitor ceasing on 23 February 2025.

The new ‘Genetic Testing in Oncology: Specific Tests’ (L39365), acknowledges some shortcomings of the original draft LCD (DL39365), but remains flawed, particularly in its review of the clinical evidence underpinning Cxbladder tests.

Specifically, Novitas:

- Continues to misunderstand the current standard of care in evaluating hematuria patients, and the important role that biomarkers can play in stratifying patients with hematuria into those that would benefit from further potentially more invasive medical attention and those that would not.
- Fails to consider new peer reviewed evidence supporting the use of Cxbladder published since the revised draft determination in July 2023, despite having been notified of the evidence and stating in writing that it would incorporate that evidence in the review. Specifically, Novitas has not reviewed or cited:
 - o the ground-breaking STRATA² randomized control study published in July 2024, which demonstrated the Clinical Utility (CU) of Cxbladder Triage and importantly that this study showed that clinicians undertook 59% fewer cystoscopies, when provided with a Triage test result; and
 - o the analytical validation data of Cxbladder Detect, Triage and Monitor published in September 2024³.

¹ Pacific Edge was informed by Novitas that its tests were covered in July 2020 (A58529)

² Lotan et al (2024). A Multicenter Prospective Randomized Controlled Trial Comparing Cxbladder Triage to Cystoscopy in Patients With Microhematuria. The Safe Testing of Risk for Asymptomatic Microhematuria Trial. J Urol 2024.

³ Harvey et al (2024) Analytical Validation of Cxbladder® Detect, Triage, and Monitor: Assays for Detection and Management of Urothelial Carcinoma. Diagnostics. 2024; 14(18):2061.

- For personal use only
- Repeats its flawed analysis of the existing clinical evidence for Cxbladder tests by focusing on the biomarker discovery study by Holyoake et al in 2008⁴ and creates confounded conclusions by lumping the evidence in future publications from all assays together and not the clinical evidence supporting the individual products.

Pacific Edge Chairman Chris Gallaher said: “We are disappointed by Novitas’ determination, which has been made despite strong representations from Pacific Edge, many key opinion leaders in urology, bladder cancer patient advocates and the molecular diagnostics industry.

“Nevertheless, it is an outcome for which Pacific Edge has prepared. Following the release of the draft determination (DL39365) in late July 2023, and in recognition of the elevated risk of a decision such as this, we restructured our business to reduce our cash burn.

“With the LCD finalized, we are now activating the contingency plans and strategies to further reduce our expense base until we regain reliable Medicare coverage. With \$28.5 million in reserves as at the end of December 2024, the company the company is well placed to fund the re-coverage process if necessary and regain reimbursement for our tests,” Mr Gallaher said.

Pacific Edge Chief Executive Dr Peter Meintjes said: “We are disappointed by a finalized LCD that misunderstands the science of biomarker discovery and diagnostic test development in the context of the standard of care in urology. We do not understand its framing of Cxbladder as a screening test of asymptomatic patients and at the failure to acknowledge the views of the American Urological Association (AUA) and the practicing clinicians that derive value from the test.

“Furthermore, we cannot believe that Novitas would commit in writing to review our most recent evidence (the STRATA study and recent analytical validation data) as part of developing this LCD and then fail to do so. Ignoring a randomized controlled trial (classified as Level 1 Evidence) published during the lengthy deliberations on the LCD and the consensus of the urology community runs counter to the mandate of a US government health insurance program, Dr Meintjes said.

“Regardless, we are prepared to continue to do what is best for our investors, physicians and patients.”

Dr Meintjes said the go-forward plans may include the following:

- Pursuing a preliminary injunction and legal challenge to the finalization of the LCD. Pacific Edge notes and recognizes the inherent uncertainty of success in these endeavors.

⁴ Holyoake et al (2008) Development of a multiplex RNA urine test for the detection and stratification of transitional cell carcinoma of the bladder. Clin Cancer Res 2008;14:742–9.

- For personal use only
- Further review the structure of our operations and our strategy to reduce cash burn in line with our plan to regain reliable Medicare coverage.
 - Submit to Novitas a Medicare coverage reconsideration request on the basis of the Journal of Urology's publication of the STRATA study and the updated Analytical Validation studies of Triage, Detect and Monitor.
 - Continue to explore other strategic alternatives for Pacific Edge that could support the company through to regaining reliable Medicare coverage and advancing the commercialization of Cxbladder globally.

Dr Meintjes emphasized that the long-term focus of the company remains unchanged and that the team is looking forward to the outcome of the AUA's ongoing review of its microhematuria guideline following the publication of the STRATA study. The possibility of AUA Guidelines inclusion creates additional potential for a reconsideration request for Medicare coverage to Novitas.

Pacific Edge is currently unable to fully determine the impact of the new LCD on test volumes in the US market for the remainder of the 2025 financial year and beyond, but in 1H 25 Medicare and Medicare Advantage delivered ~5,300 commercial tests (~54% of US commercial tests) and ~\$6.5m NZD in total operating revenue.

The company expects to continue to bill and receive reimbursement from contracted US payers without interruption, notably Kaiser Permanente and the US Veterans Administration, and from non-contracted private payers in line with historic reimbursement rates. Similarly, Pacific Edge expects collections from the enhanced patient responsibility and patient assistance programs to continue in line with the rates since the introduction of that program in July 2023.

Dr Meintjes said: "While this determination will have an impact on our current and future commercialization plans, it simultaneously emphasizes that our focus on rigorous clinical evidence generation as a path to gaining coverage certainty through guidelines inclusion is the right focus for our business. This program is at the center of our efforts to regain Medicare coverage.'

Pacific Edge will be hosting a conference call and webcast to discuss the determination today (Monday 13 January 2025) at 11.00am NZST:

This update will be available via webcast by the following link:

www.virtualmeeting.co.nz/pebiu25 or by phone on the following toll-free numbers:

- New Zealand: 0800 005 652
- Australia: 1800 953 093

Questions

Questions can be submitted online in writing via the Webcast platform or verbally via the audio call when prompted.

The new 'Genetic Testing in Oncology: Specific Tests' (L39365) LCD can be accessed [HERE](#)

The response to comments on the draft LCD 'Genetic Testing for Oncology' (DL39365) can be accessed: [HERE](#)

Released for and on behalf of Pacific Edge by Grant Gibson Chief Financial Officer

For more information:

Investors:

Dr Peter Meintjes
Chief Executive
Pacific Edge
P: 022 032 1263

Media:

Richard Inder
The Project
P: +64 21 645 643

OVERVIEW

Pacific Edge: www.pacifiedgedx.com

Pacific Edge Limited (NZX/ ASX: PEB) is a global cancer diagnostics company leading the way in the development and commercialization of bladder cancer diagnostic and prognostic tests for patients presenting with hematuria or surveillance of recurrent disease. Headquartered in Dunedin, New Zealand, the company provides its suite of Cxbladder tests globally through its wholly owned, and CLIA certified, laboratories in New Zealand and the USA.

Cxbladder: www.cxbladder.com

Cxbladder is a urine-based genomic biomarker test optimized for the detection and surveillance of bladder cancer. The Cxbladder evidence portfolio developed over the past 14 years includes more than 20 peer reviewed publications for primary detection, surveillance, adjudication of atypical urine cytology and equivocal cystoscopy. Cxbladder is the focal point of numerous ongoing and planned clinical studies to generate an ever-increasing body of clinical utility evidence supporting adoption and use in the clinic to improve patient health outcomes. Cxbladder has been trusted by over 4,400 US urologists in the diagnosis and management of more than 100,000 patients, including the option for in-home sample collection. In New Zealand, Cxbladder is accessible to 75% of the population via public healthcare and all residents have the option of buying the test online.

For personal use only



PacificEdge[®]
CANCER DIAGNOSTICS

NOVITAS LCD INVESTOR PRESENTATION

Chris Gallaher
Chairman

Dr Peter Meintjes
Chief Executive Officer

13 January 2025

ersonal use only

IMPORTANT NOTICE AND DISCLAIMER

This presentation has been prepared by Pacific Edge Limited (PEL) solely to provide interested parties with further information about PEL and its activities at the date of this presentation.

Information of a general nature

The information in this presentation is of a general nature and does not purport to be complete nor does it contain all the information which a prospective investor may require in evaluating a possible investment in PEL or that would be required in a product disclosure statement, prospectus or other disclosure document for the purposes of the New Zealand Financial Markets Conduct Act 2013 (FMCA) or the Australian Corporations Act 2001. PEL is subject to a disclosure obligation that requires it to notify certain material information to NZX Limited (NZX) and ASX Limited (ASX) for the purpose of that information being made available to participants in the market and that information can be found by visiting www.nzx.com/companies/PEB and www2.asx.com.au/markets/company/PEB. This presentation should be read in conjunction with PEL's other periodic and continuous disclosure announcements released to NZX and ASX.

Not an offer

This presentation is for information purposes only and is not an invitation or offer of securities for subscription, purchase or sale in any jurisdiction where such offer purchase or sale would not be permitted.

Not financial product advice

This presentation does not constitute legal, financial, tax, financial product advice or investment advice or a recommendation to acquire PEL securities and has been prepared without taking into account the objectives, financial situation or needs of investors. Before making an investment decision, prospective investors should consider the appropriateness of the information having regard to their own objectives, financial situation and needs and consult an NZX Firm, solicitor, accountant or other professional advisor if necessary.

Forward-looking statements

This presentation may contain forward-looking statements that reflect

PEL's current views with respect to future events. Forward-looking statements, by their very nature, involve inherent risks and uncertainties. Many of those risks and uncertainties are matters which are beyond PEL's control and could cause actual results to differ from those predicted. Variations could either be materially positive or materially negative. The information is stated only as at the date of this presentation. Except as required by law or regulation (including the NZX Listing Rules and ASX Listing Rules), PEL undertakes no obligation to update or revise any forward-looking statements, whether as a result of new information, future events or otherwise. To the maximum extent permitted by law, the directors of PEL, PEL and any of its related bodies corporate and affiliates, and their respective officers, partners, employees, agents, associates and advisers do not make any representation or warranty, express or implied, as to the accuracy, reliability or completeness of such information, or the likelihood of fulfilment of any forward-looking statement or any event or results expressed or implied in any forward-looking statement, and disclaim all responsibility and liability for these forward-looking statements (including, without limitation, liability for negligence).

Financial data

All dollar values are in New Zealand dollars unless otherwise stated. This presentation should be read in conjunction with, and subject to, the explanations and views of future outlook on market conditions, earnings and activities given recent announcements to the NZX and ASX.

Effect of rounding

A number of figures, amounts, percentages, estimates, calculations of value and fractions in this presentation are subject to the effect of rounding. Accordingly, the actual calculation of these figures may differ from the figures set out in this presentation.

Past performance

Investors should note that past performance, including past share price performance, cannot be relied upon as an indicator of (and provides no guidance as to) future PEL performance, including future financial position or share price performance.

Investment risk

An investment in securities of PEL is subject to investment risk and other known and unknown risks, some of which are beyond the control of PEL. PEL does not guarantee any particular return or the performance of PEL.

Disclaimer

None of PEL or PEL's advisers or any of their respective affiliates, related bodies corporate, directors, officers, partners, employees and agents, have authorised, permitted or caused the issue, submission, dispatch or provision of this presentation and, except to the extent referred to in this presentation, none of them makes or purports to make any statement in this presentation and there is no statement in this presentation which is based on any statement by any of them. To the maximum extent permitted by law, none of PEL and its advisers, affiliates, related bodies corporate, nor their respective directors, officers, partners, employees and agents makes any representation or warranty, express or implied, as to the currency, accuracy, reliability or completeness of information in this presentation; and none of them shall have any liability (including for negligence) for:

- any errors or omissions in this presentation; or
- any failure to correct or update this presentation, or any other written or oral communications provided in relation to this presentation; or
- any claim, loss or damage (whether foreseeable or not) arising from the use of any information in this presentation or otherwise arising in connection with this presentation or the information contained in it.

By receiving this presentation, you agree to the above terms and conditions.

PACIFIC EDGE'S MEDICARE JOURNEY

July '20

Novitas informs Pacific Edge that Cxbladder is covered (A58529, retired Nov '22)

July - Sep '22

Open Meetings, Public Comment. Support from industry, patient advocates & customers to retire/revise DL39365

Jan '23

Triage gains coding and reimbursement under LCA (A58917)

June - July '23

We pursue all legal and political strategies to overturn the LCD

Aug '23 – May '24

Participated in Novitas' open notice & comment process
Engaged with CMS
Published STRATA
Novitas agrees to review PPT & STRATA

Aug '24

Published AV Paper on all existing Cxbladder products
Novitas agrees to review

Jan '25

Novitas finalizes LCD under a new name: 'Genetic Testing in Oncology: Specific Tests' (L39365)

Novitas proposes non-coverage for Cxbladder with LCD (DL39365)
Implementation seen as unlikely

Contingency planning for adverse LCD determination amid expectation of continued coverage

Novitas finalizes LCD (L39365) with non-coverage for Cxbladder, future effective on 17 July

Novitas agrees to follow procedure for notice and comment on the LCD
LCD stayed, Medicare coverage continues

CMS grants an extension to Novitas to ensure all comments can be considered

C21 and other stakeholders meet with CMS regarding Extension

July '22

Sep 22 - May '23

June '23

July '23

July '24

Aug '24



Novitas is the Medicare Administrative Contactor (MAC) with jurisdiction for Pacific Edge's US laboratory.

'GENETIC TESTING IN ONCOLOGY: SPECIFIC TESTS' (L39365)

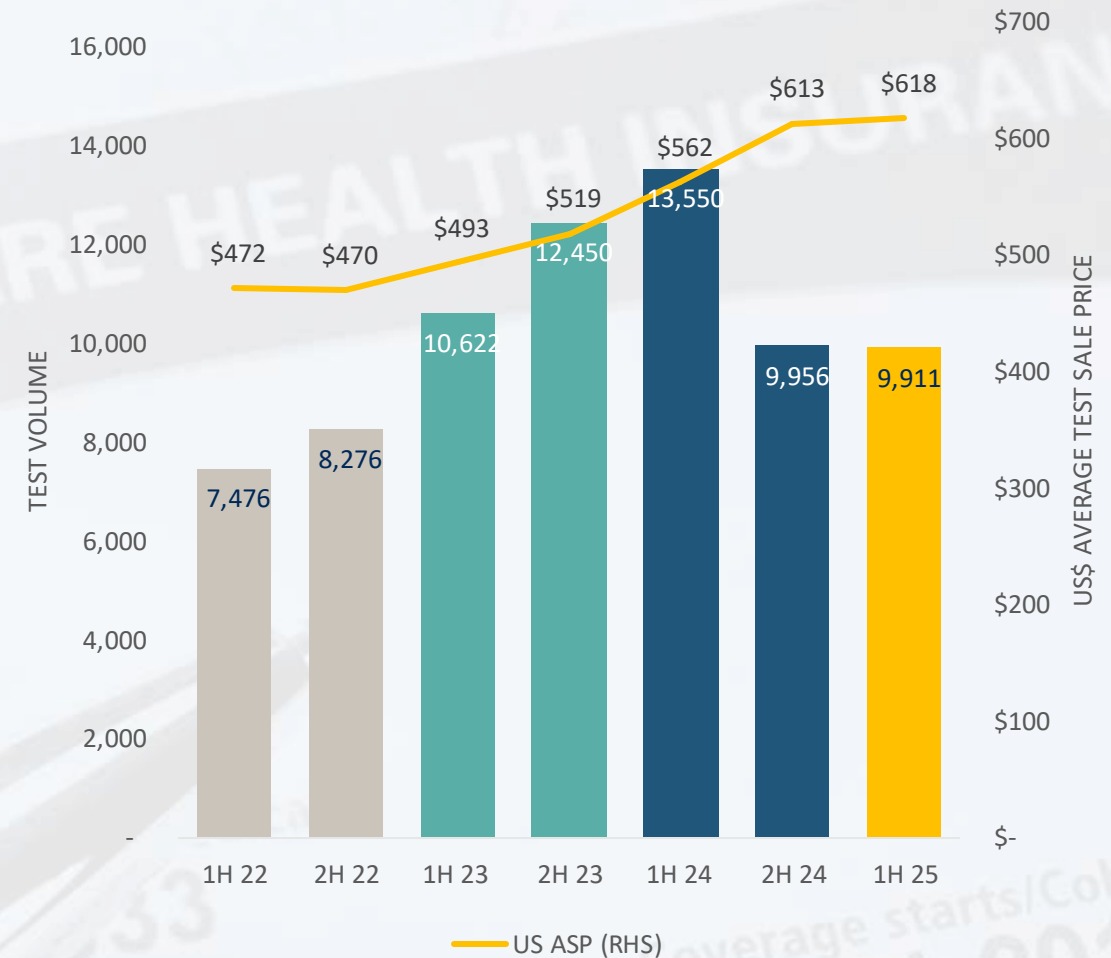
FINDINGS

- Finalized LCD no longer relies on 3rd party databases/compendia
- Finalized LCD no longer preemptively non-covers non-commercial tests
- Finalized LCD has been reduced to an evidentiary review and non-coverage determination of specific tests including Cxbladder, concluding that “Cxbladder tests are not reasonable and necessary to support positive outcomes in the management of bladder cancer”
- Finalized LCD repeats concerns detailed in the original draft:
 - Conflates hematuria evaluation with screening
 - Insufficient validation in confounding clinical circumstances
 - Low PPV and high numbers of false positives
 - Questions credibility of Pacific Edge funded research

MEDICARE IS PACIFIC EDGE'S LARGEST PAYER

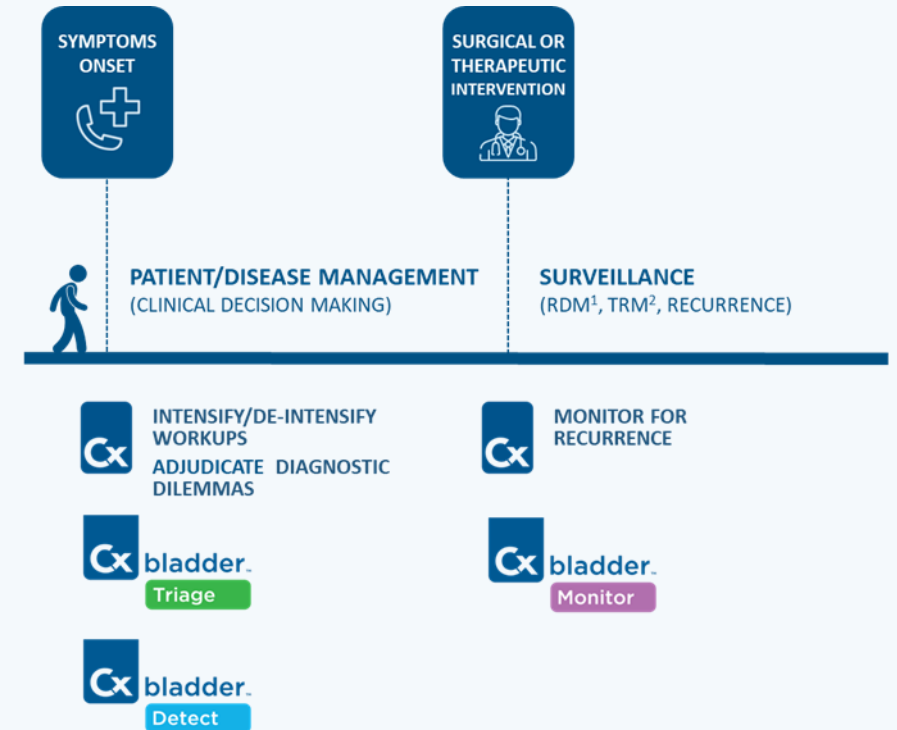
- Medicare and Medicare Advantage is the largest global opportunity in bladder cancer diagnostics from a single coverage decision
- In 1H 25 Medicare and Medicare Advantage delivered ~5,300 commercial tests (~54% of US commercial tests) and ~\$6.5m NZD in total operating revenue (~59% of total operating revenue)
- Pacific Edge expects to be reimbursed at US\$760/test until 23 February 2025

US COMMERCIAL TEST VOLUMES AND ASP* (US\$)



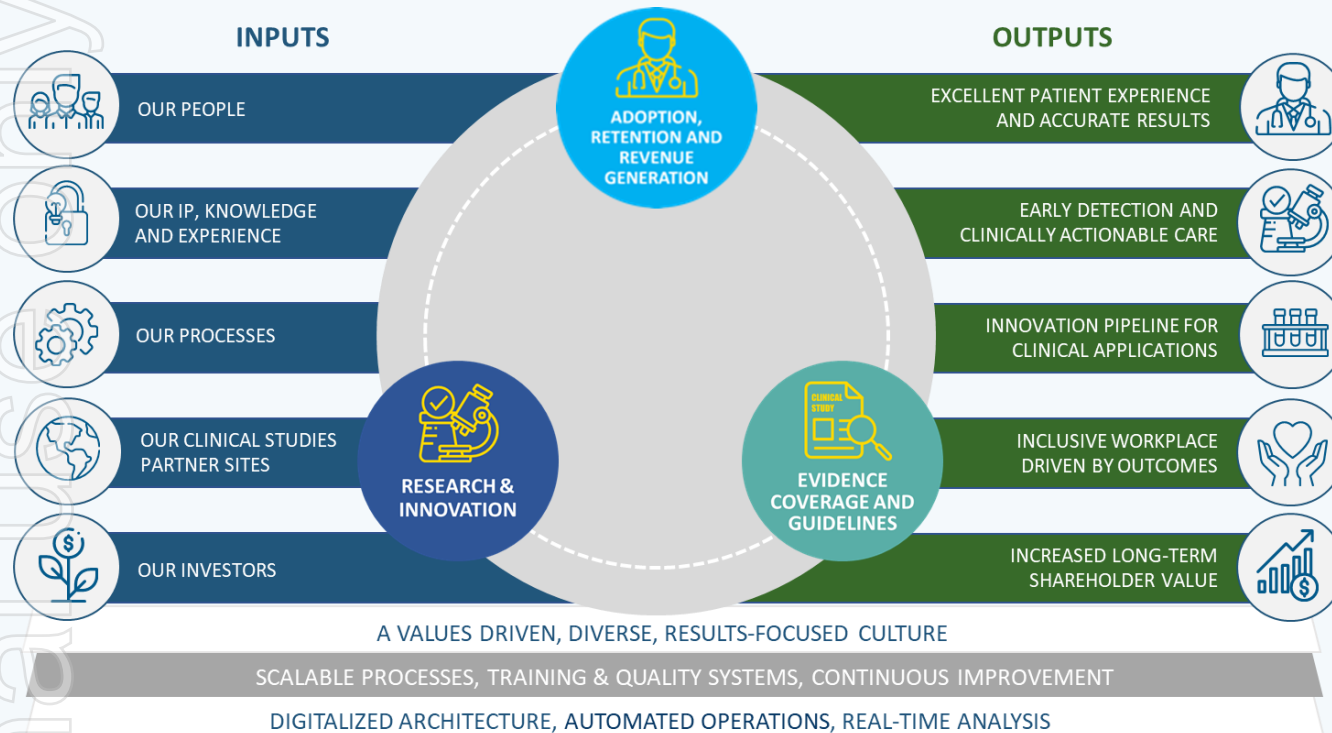
NOVITAS CONTINUES TO MISUNDERSTAND THE VALUE OF CXBLADDER

- Appears to misunderstand the intended patient population and the important role that biomarkers can play in risk stratifying hematuria patients
 - Appears to assume Cxbladder products are a screening test
- Fails to consider new peer reviewed evidence, despite notifying Pacific Edge in writing that it would incorporate that evidence:
 - the STRATA¹ randomized control study published in July 2024, which demonstrated the Clinical Utility (CU) of Cxbladder Triage
 - the analytical validation data of Cxbladder Detect, Triage and Monitor published in September 2024
- Does not acknowledge:
 - A Journal of Urology editorial noting the clinical value of Cxbladder
 - Representations on the draft LCD calling for calling for continued Medicare coverage of Cxbladder during the 'Notice and Comment' period in 2023
 - the American Urological Association (AUA)
 - the Large Urology Group Practice Association (LUGPA), and
 - the American Association of Clinical Urologists (AACU)
 - Coalition for 21st Century Medicine (C21), and
 - the American Clinical Laboratory Association (ACLA)
- Repeats its flawed analysis of the existing Cxbladder test evidence by focusing on the biomarker discovery study by Holyoake et al in 2008⁴ and creates confounded conclusions by lumping the evidence in future publications from all assays together
- Does not explicitly clarify whether hematuria is or is not substantiated suspicion of disease
 - If not, LCD should have no scope to non-cover non-oncologic tests like Triage and Detect



1. Lotan et al (2024). A Multicenter Prospective Randomized Controlled Trial Comparing Cxbladder Triage to Cystoscopy in Patients With Microhematuria. The Safe Testing of Risk for Asymptomatic Microhematuria Trial. J Urol 2024.
 2. Harvey et al (2024) Analytical Validation of Cxbladder® Detect, Triage, and Monitor: Assays for Detection and Management of Urothelial Carcinoma. Diagnostics. 2024; 14(18):2061.
 3. Anderson C. (2024) What Is the Future of Cystoscopy for Detecting Urothelial Carcinoma? J Urol. Vol. 212, 399-400, September 2024.
 4. Holyoake et al (2008) Development of a multiplex RNA urine test for the detection and stratification of transitional cell carcinoma of the bladder. Clin Cancer Res 2008;14:742-9.

VALUE CREATION THROUGH A FOCUS ON THREE PILLARS



WE PREPARED FOR THIS OUTCOME

- We have re-focused the business on clinical development for guidelines inclusion and increased coverage certainty for Detect Plus & Monitor Plus
- We have restructured our commercial operations to focus on profitable territories
- We have adjusted our selling focus towards the clinical value of Cxbladder as the driver of higher throughput/headcount and throughput/clinician and health economics messaging
- The company is well placed to fund the re-coverage process if necessary and regain reimbursement for our tests

SETTING A ROUTE TO REGAINING MEDICARE COVERAGE

ACTIVATING OUR CONTINGENCY PLANS

- Potential legal challenge to the LCD on procedural and fairness grounds
- Further review the structure of our operations and our strategy to reduce cash burn in line with our plan to regain Medicare coverage
- Submit a reconsideration request to Novitas regarding the evidence not already considered of the Journal of Urology's publication of the STRATA¹ study and the updated Analytical Validation studies of Triage, Detect and Monitor²
- Continue to advance our clinical evidence generation program in an AV/CV/CU framework for Guidelines inclusion by the AUA and NCCN
- Continue to publish evidence from our partnership with Kaiser Permanente
- Continue to explore other strategic alternatives for Pacific Edge that could support the company through regaining Medicare coverage and advancing the commercialization of Cxbladder globally

CLINICAL EVIDENCE CATALYSTS FOR COVERAGE CERTAINTY

MEDICARE RECONSIDERATION AND GUIDELINE INCLUSION REQUESTS

(Novitas¹ typically handles reconsideration requests on existing LCDs within three months of submission)

| Catalyst | Test and evidence standard ⁽²⁾ | Expected date of reconsideration request ⁽³⁾ |
|---|---|---|
| 1. STRATA data published | - CU of Triage | Novitas notified of the publication in April |
| 2. Automated RNA and DNA extraction | - AV of Triage, Detect and Monitor | Q3 2024 (Published September, Novitas notified) |
| 3. Triage Plus Analytical Validation | - AV of Triage Plus | Q2 2025 |
| 4. DRIVE data published | - CV of Triage Plus | Q2 2025 |
| 5. STRATA concordance | - CU of Triage Plus (concordance) | Q3 2025 |
| 6. Kaiser Permanente RWE ⁴ published | - CU of Triage (RWE) | Q3 2025 ⁵ |
| 7. AUSSIE data published | - CV of Triage Plus | Q4 2025 |
| 8. microDRIVE published | - CV of Triage Plus | Q1 2026 |
| 9. Monitor Plus Analytical Validation | - AV of Monitor Plus | Q2 2026 |
| 10. Pooled CV data published ⁶ | - CV of Triage Plus | Q2 2026 |
| 11. LOBSTER published | - CV of Monitor/Monitor Plus | Q1 2027 |
| 12. CREDIBLE data published | - CU of Triage Plus | Q3 2027 |

¹ Novitas is the Medicare Administrative Contractor (MAC) charged with making the Medicare local coverage determination for Pacific Edge's US laboratory

² AV, CV CU, respectively Analytical Validity, Clinical Validity, Clinical Utility

³ All dates are calendar year rather than financial year and our best current estimates

⁴ RWE is Real World Evidence

⁵ Timeline determined by Kaiser Permanente

⁶ The pooled analysis brings together data from DRIVE, AUSSIE and microDRIVE

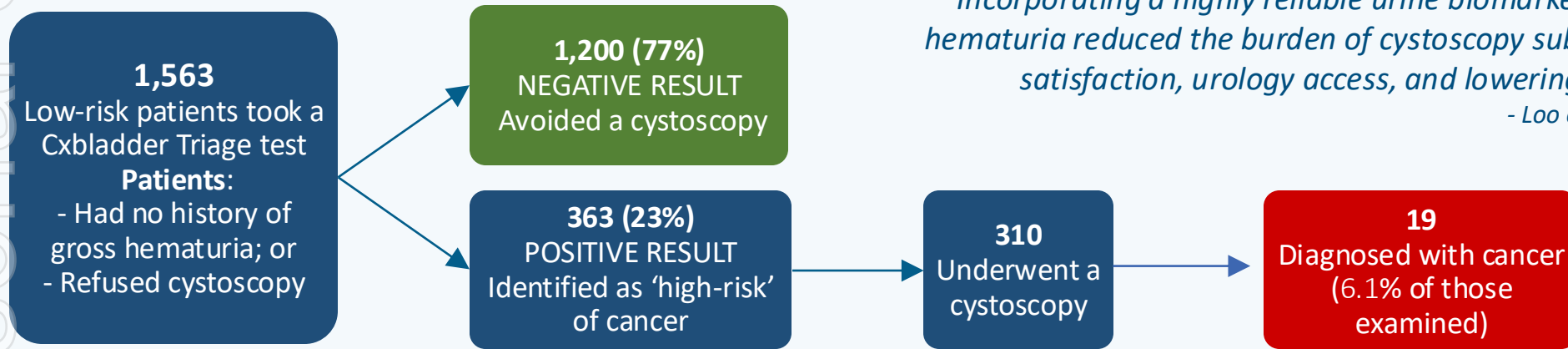
Pacific Edge will also lodge a reconsideration request if Cxbladder is included in the American Urological Association (AUA) or National Comprehensive Cancer Network (NCCN) guidelines

INDEPENDENT REAL-WORLD EVIDENCE OF CXBLADDER'S CLINICAL UTILITY

CLINICAL UTILITY EVIDENCE OF CXBLADDER TRIAGE THAT SUPPORTS MEDICARE COVERAGE

KAISER PERMANENTE ABSTRACT SHOWS CLINICAL VALUE IN REAL WORLD SETTING

- Kaiser Permanente presented an abstract to the Western Section AUA conference regarding their ongoing experience with Cxbladder Triage
- The abstract focuses on 1,563 low-risk patients in the Kaiser Southern California health system with no history of gross hematuria or who refused cystoscopy
 - 1,200 patients avoided invasive cystoscopy, improving patient satisfaction, urology access and lowering the overall cost of care
- A peer-reviewed publication is expected on the complete data set, targeting the AUA conference in 2025
- Pacific Edge will use this future publication for a Medicare reconsideration request (in the event of a non-coverage determination)



"Incorporating a highly reliable urine biomarker into clinical workflows for hematuria reduced the burden of cystoscopy substantially, improving patient satisfaction, urology access, and lowering overall cost of care,"

- Loo et al (2024)¹



¹ Real World Clinical Utility of a Urinary Biomarker (Cxbladder Triage) for Hematuria Referrals in an Integrated Managed Care Health System. Abstract accepted for presentation to the Western Section of the American Urological Association annual conference.

AUA HEMATURIA GUIDELINES – A COMPREHENSIVE REVIEW

AN APPROACH THAT SUPPORTS OUR DRIVE FOR GUIDELINE INCLUSION

- The AUA has commenced a review of the microhematuria guideline and has asked for professional comment on its initial draft; no timeframe provided
- The clinical utility of Cxbladder Triage demonstrated by the STRATA¹ study is expected to be considered as part of the deliberations
- A positive AUA Journal of Urology editorial in July 2024 suggests favorable direction of travel
- Clear/positive inclusion language would be used as the basis for a Medicare coverage re-consideration request (in the event of a non-coverage determination)



American
Urological
Association

www.auanet.org

- Globally the most influential and largest urological association
- **Relevant standards of care:** Hematuria, microhematuria management and non-muscle invasive bladder cancer (NMIBC)
- **Review period:** with new evidence, last updated in 2020

of THE JOURNAL
UROLOGY®
www.auajournals.org/journal/juro

Editorials

What Is the Future of Cystoscopy for Detecting Urothelial Carcinoma?

Asymptomatic microscopic hematuria (AMH) is a common finding that leads to many urology referrals. Occasionally, patients with AMH harbor urothelial carcinoma of the bladder. The sensitivity of 98.6% with about a third of patients testing negative. For the microscopic hematuria group only, the sensitivity was 100%. The new...

“... these tests have the potential to improve the management of our patients with suspected [urothelial cancer] who would otherwise require an invasive procedure for diagnosis.”

– Journal of Urology editorial Sept 2024



PacificEdge®
CANCER DIAGNOSTICS

1. Lotan et al. (2024) . A Multicenter Prospective Randomized Controlled Trial Comparing Cxbladder Triage to Cystoscopy in Patients With Microhematuria. The Safe Testing of Risk for Asymptomatic Microhematuria Trial. The Journal of Urology Vol 212 1-8 Jul 2024.

SUMMARY AND OUTLOOK



PacificEdge[®]
CANCER DIAGNOSTICS

OUTLOOK: MORE CATALYSTS THAN HEADWINDS

- We are disappointed with this decision, but have prepared for it
- We will focus on the available legal and appeals avenues in the next 45 days
- We will continue our evidence generation focus until re-coverage
- The company is well placed to fund the re-coverage process if necessary and regain reimbursement for our tests

HEADWINDS:

- Customer response to the non-coverage determination
- Negative physician or patient response to expanding the enhanced patient responsibility program

CATALYSTS:

- Potential inclusion in the AUA Microhematuria Guidelines
- Reconsideration of already-published Clinical Evidence
 - STRATA publication on the CU of Triage
 - AV publication for Triage, Detect and Monitor
- Reconsideration of new Clinical Evidence
 - AV publication for Triage Plus
 - DRIVE publication for Triage Plus
- Cxbladder Triage Plus pricing via Gapfill
- New clinician-generated CU evidence as studies completed (particularly Kaiser)
- Litigation success



APPENDIX

ersonal use only

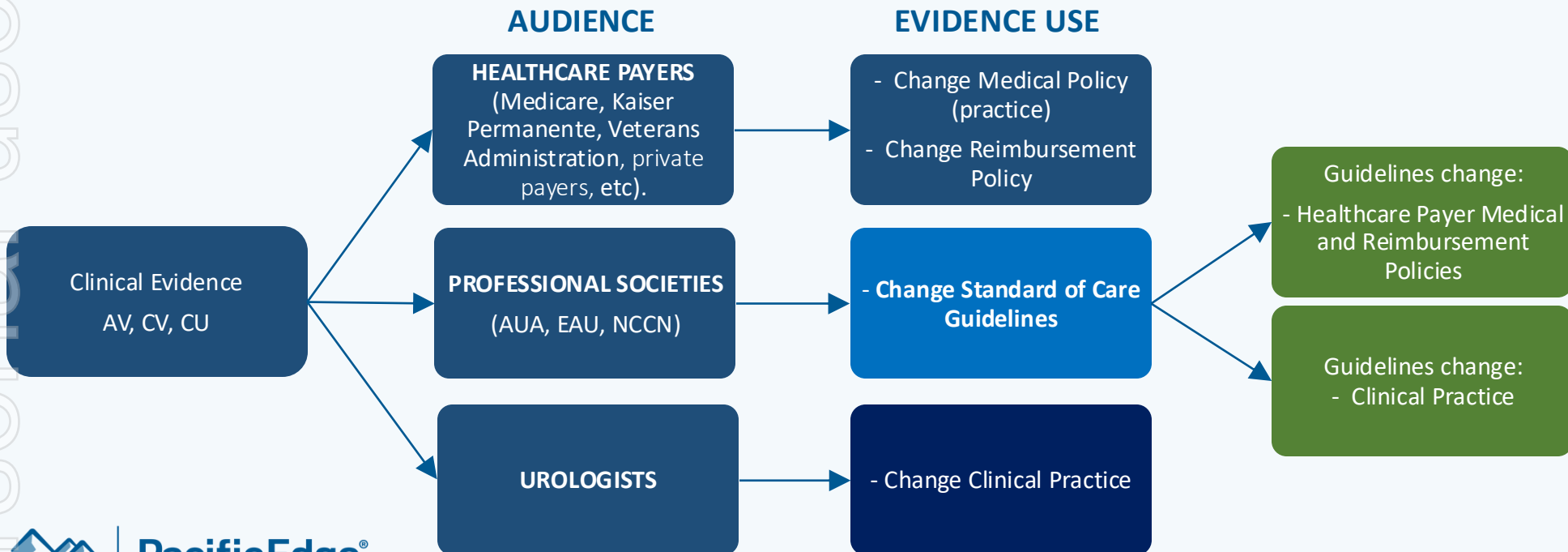


PacificEdge[®]
CANCER DIAGNOSTICS

PACIFIC EDGE'S EVIDENCE PROGRAM SEEKS TO CHANGE CLINICAL PRACTICE

STRUCTURED CLINICAL EVIDENCE DEVELOPMENT

- Pacific Edge's clinical study program is focused on developing clinical evidence for Cxbladder tests in a structured framework
 - **Analytical Validity (AV):** Evidence that a test is repeatable in the lab for a given indication and population
 - **Clinical Validity (CV):** Evidence a test works in the same way on an independent eligible population for a given indication
 - **Clinical Utility (CU):** Evidence that a test changes clinical practice in the hands of a physician, typically in prospectively recruited RCTs
 - **Real World Evidence (RWE):** CU verification of the real-world use of the test in clinical practice, usually through regular use of the test by physicians
- Clinical Utility evidence obtained through randomized control trials is required to change standard of care guidelines (in addition to AV and CV evidence)



American Urological Association



National Comprehensive Cancer Network®



European Association of Urology

SUMMARY OF CLINICAL EVIDENCE

| | | Study | Pop. Type | Sensitivity (Sn) | NPV | Specificity (Sp) | Comment |
|-------------|----------------------------|------------------------------|-----------|------------------|-----------|---|---|
| Triage Plus | Proof of concept | Lotan et al., 2022 | MH + GH* | 97% | 99.7% | 90% | Pooled data from US and Singapore cohorts (n=804). Called Detect+ in publication. |
| | CV | DRIVE (unpublished) (1) | MH + GH* | | | | Study in progress |
| | | AUSSIE (unpublished) (4) | MH + GH* | | | | Study in progress |
| | | microDRIVE (unpublished) (5) | MH* | | | | Study in progress |
| CU | CREDIBLE (not started) (6) | MH | | | | Protocol in final development stages, site selection starting by the end of year. | |
| Triage | AV | Kavalieris et al., 2015 | MH + GH* | 95.10% | 98.50% | 45% | Sn, Sp, NPV values when test-negative rate is 40% |
| | CV | Davidson et al., 2019 | MH + GH* | 95.5% (1) | 98.6% (1) | 34.3% | GH only: Sn (95.1%), NPV (98%), Sp (32.8%); MH only: Sn (100%), NPV (100%), Sp (42.6%) |
| | | Konety et al., 2019 | (2) | 100% | | | Cxbladder (3) correctly adjudicated all UC confirmed patients (n=26) with atypical urine cytology results (n=153, 4) |
| | | Lotan et al., 2022 | MH + GH* | 89% | 99% | 63% | Pooled data from US and Singapore cohorts (n=804) |
| | | Davidson et al., 2020 | MH + GH* | 89.4% (5) | 98.9% (5) | 59% (5) | 39% of patients testing negative for Cxb Triage & imaging did not get cystoscopy & were managed at primary care (6) |
| | CU | Lotan et al., 2024 (7) | MH + GH* | 90% | 99% | 56% | Showed clinicians using Triage undertook 59% fewer cystoscopies on low-risk patients presenting with hematuria. |
| Detect | AV | O'Sullivan et al., 2012 | GH* | 81.8% | 97% | 85.1% | Cxb Detect detected 97% of HG tumors & 100% of Stage 1 or greater tumors |
| | CV | Lotan et al., 2022 | MH + GH* | 74% | 97% | 82% | Pooled data from US and Singapore cohorts (n=804) |
| | | DRIVE (unpublished) (1) | MH + GH* | | | | Study in progress |
| | Health Economics | Tyson et al., 2023 | MH | | | | Published economic model shows significant savings for healthcare payers (median savings of \$559 in direct costs per patient) |
| Monitor | AV | Kavalieris et al., 2017 | (1) | 88% (2) | 97% (2) | N/A | (3) |
| | CV | Konety et al., 2019 | (4) | 100% | | | Cxbladder (5) correctly adjudicated all UC confirmed patients (n=26) with atypical urine cytology results (n=153, 6) |
| | CU | Koya et al., 2020 | (7) | | | | Integration of Cxb Monitor into the surveillance schedule reduced annual cystoscopies (39%) (8,9) |
| | CU | Li et al., 2023 | (7) | | | | Cxbladder Monitor safely postpones a patient's next scheduled cystoscopy, the current 'gold standard' for bladder cancer surveillance |

* Referred patients. Definitions - MH: Microhematuria, GH: Gross Hematuria. For Sensitivity, NPV and Specificity please see page 41 of this presentation

FOOTNOTES FOR CLINICAL EVIDENCE SUMMARY

| Footnotes | | |
|-------------|---|---|
| Triage Plus | 1 | Observational study to validate performance characteristics and clinical utility of Cxbladder tests (Cxb Triage, Cxb Detect, Cxb Triage Plus). |
| | 2 | Observational study to validate performance characteristics of Cxb Triage Plus in patients with UC of the upper tract. |
| | 3 | Patients with suspected upper tract UC (UTUC) or surveillance patients with a history of UTUC. |
| | 4 | Observational study to validate performance characteristics and clinical utility of Cxbladder tests (Cxb Triage, Cxb Detect, Cxb Triage Plus). |
| | 5 | Observational study to validate performance characteristics of Cxb Triage Plus in microhematuria (MH) patients. |
| | 6 | Clinical utility study comparing the reduction of cystoscopy use when implementing the new clinical pathway to SOC in a defined MH population. |
| Triage | 1 | Cxb Triage performance; Cxb Triage & imaging combined performance had a Sn of 97.7% & NPV of 99.8%. |
| | 2 | Patients included hematuria evaluation ($n=436$) or surveillance previously diagnosed with UC ($n=416$) with both Cxbladder & urine cytology results. |
| | 3 | Cxbladder includes Cxbladder Triage & Cxbladder Monitor. |
| | 4 | This included $n=70$ for patients with hematuria & $n=83$ for patients with previously diagnosed UC and overall test negative rate of 30.7%. |
| | 5 | Cxb Triage performance; Cxb Triage & imaging combined performance had a Sn of 98.1%, NPV of 99.9% & Sp of 98.4%. |
| | 6 | Cxb Triage negative rate was 53%; Follow-up period of 21-months showed no missed cancers, demonstrating safety. |
| | 7 | Cxb Triage demonstrated to have clinical utility in safely risk stratifying low risk microhematuria patients and not undertake cystoscopy. |
| Detect | 1 | Observational study to validate performance characteristics and clinical utility of Cxbladder tests (Cxb Triage, Cxb Detect, Cxb Detect+). |
| Monitor | 1 | Surveillance patients previously diagnosed with primary or recurrent UC. |
| | 2 | Cxb Monitor performance characteristics on surveillance patients diagnosed with primary UC; Cxb Monitor had a Sn of 93% and NPV of 94% on patients with recurrent UC. |
| | 3 | Using Kavalieris et al., (2017) data set, Lotan et al., (2017) compared relative performance of Cxb Monitor against NMP22 ELISA, NMP22 BladderChek and urine cytology. |
| | 4 | Patients included hematuria evaluation ($n=436$) or previously diagnosed UC ($n=416$) with both Cxbladder & urine cytology results. |
| | 5 | Cxbladder includes Cxbladder Triage & Cxbladder Monitor. |
| | 6 | This included $n=70$ for patients with hematuria & $n=83$ for patients with previously diagnosed UC; test negative rate of 30.7%. |
| | 7 | All patients were being evaluated for recurrence of UC ($n=309$ providing 443 samples). |
| | 8 | Cxb Monitor identified all seven confirmed recurrence events identified on the first cystoscopy. |
| | 9 | Patients returning negative Cxb Monitor results ($n=235$) had no pathology-confirmed recurrence at 1st cystoscopy |

REFERENCES SUMMARY OF CLINICAL EVIDENCE

| References | |
|--------------------|---|
| Triage Plus | Lotan et al., (2022). Urinary Analysis of FGFR3 and TERT Gene Mutations Enhances Performance of Cxbladder Tests and Improves Patient Risk Stratification ¹ . The Journal of Urology, 10-1097. |
| Triage | Davidson et al., (2019). Inclusion of a molecular marker of bladder cancer in a clinical pathway for investigation of haematuria may reduce the need for cystoscopy. NZ Med J, 132(1497), 55-64. |
| | Davidson et al., (2020). Assessment of a clinical pathway for investigation of haematuria that reduces the need for cystoscopy. The New Zealand Medical Journal (Online), 133(1527), 71-82. |
| | Kavalieris et al., (2015). A segregation index combining phenotypic (clinical characteristics) and genotypic (gene expression) biomarkers from a urine sample to triage outpatients presenting with hematuria who have a low probability of urothelial carcinoma. BMC urology, 15(1), 1-12. |
| | Konety et al., (2019). Evaluation of Cxbladder and adjudication of atypical cytology and equivocal cystoscopy. European urology, 76(2), 238-243. |
| | Lotan et al., (2022). Urinary Analysis of FGFR3 and TERT Gene Mutations Enhances Performance of Cxbladder Tests and Improves Patient Risk Stratification. The Journal of Urology, 10-1097. |
| | Lotan et al. (2024) . A Multicenter Prospective Randomized Controlled Trial Comparing Cxbladder Triage to Cystoscopy in Patients With Microhematuria. The Safe Testing of Risk for Asymptomatic Microhematuria Trial. The Journal of Urology Vol 212 1-8 Jul 2024. |
| Detect | Lotan et al., (2022). Urinary Analysis of FGFR3 and TERT Gene Mutations Enhances Performance of Cxbladder Tests and Improves Patient Risk Stratification. The Journal of Urology, 10-1097. |
| | O'Sullivan et al., (2012). A multigene urine test for the detection and stratification of bladder cancer in patients presenting with hematuria. The Journal of urology, 188(3), 741-747. |
| Monitor | Kavalieris et al., (2017). Performance characteristics of a multigene urine biomarker test for monitoring for recurrent urothelial carcinoma in a multicenter study. The Journal of Urology, 197(6), 1419-1426. |
| | Konety et al., (2019). Evaluation of cxbladder and adjudication of atypical cytology and equivocal cystoscopy. European urology, 76(2), 238-243. |
| | Koya et al., (2020). An evaluation of the real-world use and clinical utility of the Cxbladder Monitor assay in the follow-up of patients previously treated for bladder cancer. BMC urology, 20(1), 1-9. |
| | Lotan et al., (2017). Clinical comparison of non-invasive urine tests for ruling out recurrent urothelial carcinoma. Urologic Oncology: Seminars and Original Investigations, 35 (8), 531-539. |
| | Li et al., (2023). Cxbladder Monitor testing to reduce cystoscopy frequency in patients with bladder cancer. Urologic Oncology: Seminars and Original Investigations, 41 (7), 326.e1– 326.38. |



1. Triage Plus was called Detect+ in this publication

FOR MORE INFORMATION:

Dr. Peter Meintjes
Chief Executive Officer
email: peter.meintjes@pelnz.com

Grant Gibson
Chief Financial Officer
email: grant.gibson@pelnz.com

Pacific Edge
87 St David Street, PO Box 56, Dunedin, New Zealand
P +64 3 577 6733 Within NZ 0800 555 563
email: investors@pacificedge.co.nz
www.pacificedgedx.com

