

16 January 2025

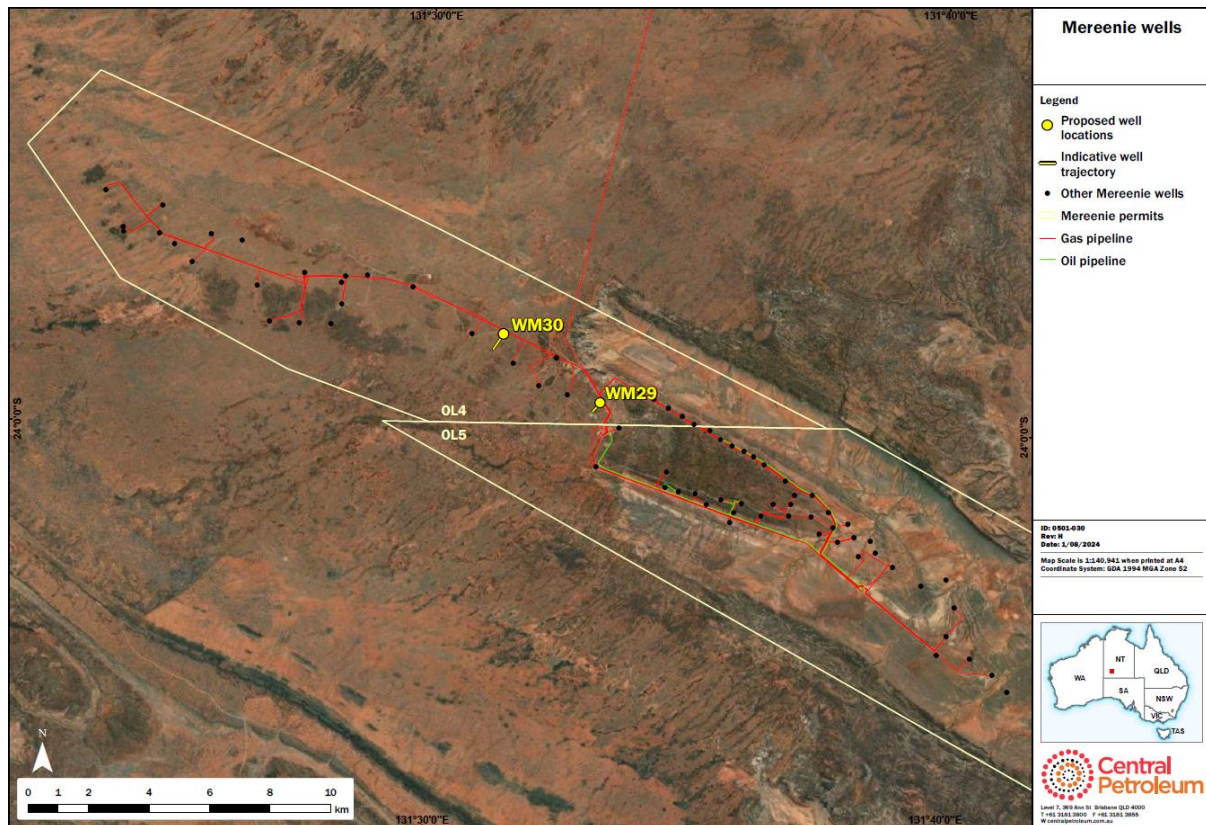
MEREENIE DEVELOPMENT WELL WM29 COMPLETED & WM30 COMMENCES

Central Petroleum Limited (**ASX:CTP**) (“**Central**” or “**Company**”) advises that the first of two Mereenie development wells, WM29, was successfully air-drilled and completed across the Pacoota-3 sandstones. The well is currently suspended and is expected to be tied-in to the gathering system by late January. This is earlier in the quarter than previously anticipated due to the schedule being proactively accelerated in response to gas shortages in the Northern Territory.

WM30, the second development well in the 2 well programme, was subsequently spudded on 16 January 2025 at 0800 hrs CST.

The Mereenie development wells are expected to return field production capacity back above 30 TJ/d (100% JV) and produce at least 25 PJ of gas (100% JV) over their lifetime. Firm gas from the new wells may be sold into the recently executed NTG GSA which can be expanded by up to 6 TJ/d (100% JV) to generate further cash flow following successful completion of the wells.

Further updates will be provided once initial flow rates are known and as the programme progresses.



For personal use only

Figure 1 – Location for the two approved development wells

-ends-

This ASX announcement was approved and authorised for release by Leon Devaney, Managing Director and Chief Executive Officer.

About Central Petroleum

Central Petroleum Limited (Central) is an established ASX-listed Australian oil and gas producer (ASX: CTP) with exploration and appraisal permits in the Northern Territory (NT). Central has grown to become the largest onshore gas Operator in the NT, supplying residential and industrial customers in the NT and wider Australian east coast market.

Central is seeking to become a major domestic energy supplier, in addition to helium and naturally occurring hydrogen, with exploration, appraisal and development plans across 169,112 km² of tenements the NT, including some of Australia's largest known onshore conventional gas prospects in the Amadeus Basin.

General Legal Disclaimer and Explanation of Terms:

This document is for information purposes only and is not investment or financial product advice nor intended for prospective investors and does not purport to provide all of the information an interested party may require in order to investigate the affairs of Central Petroleum Limited ("Company"). This document has been prepared without taking into account the investment objectives, financial situation or particular needs of any particular person. The data, information, opinions and conclusions ("Information") herein are subject to change without notice.

No representation or warranty, express or implied, is made as to the fairness, accuracy, completeness, correctness, likelihood of achievement or reasonableness of the Information contained in this document. To the maximum extent permitted by law, none of the Company or its agents, directors, officers, employees, advisors and consultants, nor any other person, accepts any liability, including, without limitation, any liability arising out of fault or negligence for any loss arising from the use of the Information contained in this document.

This document may contain forward-looking statements which include (but are not limited to) forecasts, prospects or returns. Forward looking statements are only predictions and are subject to risks, uncertainties and assumptions which may be outside the control of the Company and could cause actual results to differ from these statements. These risks, uncertainties and assumptions include (but are not limited to) funding, exploration, commodity prices, currency fluctuations, economic and financial market conditions, environmental risks, legislative or fiscal developments, political risks, project delay, approvals, cost estimates and other risk factors described from time-to-time in the Company's filings with the ASX. Actual facts, matters or circumstances may be different to those expressed or implied in this document. Given these uncertainties, readers are cautioned not to place reliance on forward looking statements. Subject to any continuing obligations under applicable law and the ASX Listing Rules, the Company and its agents, directors, officers, employees, advisors and consultants, nor any other person, do not undertake any obligation to update or revise any Information or any of the forward looking statements in this document. Sentences and phrases are forward looking statements when they include any tense from present to future or similar inflection words, such as (but not limited to) "believe", "understand", "estimate", "anticipate", "plan", "predict", "target", "may", "hope", "can", "will", "should", "expect", "intend", "projects", "is designed to", "with the intent", "potential", the negative of these words or such other variations thereon or comparable terminology or similar expressions of the future which may indicate a forward looking statement or conditional verbs such as "will", "should", "would", "may", "can" and "could" are generally forward-looking in nature and not historical facts.

No right of the Company or its subsidiaries shall be waived arising out of this document. All rights are reserved.

For personal use only