



COPPERMOLY
Limited

ADDRESS

Suite 1, 1 Centro Ave
Subiaco WA 6008
Australia

ABN 54 126 490 855

PHONE

+61 (08) 6559 1792

EMAIL

info@coppermoly.com.au

WEBSITE

www.coppermoly.com.au

22 January 2025

ASX Code: COY

COPPERMOLY RAISES \$1.05 MILLION TO FUND COPPER AND GOLD EXPLORATION

Coppermoly Limited (ASX: COY) (“Coppermoly” or “the Company”), a Queensland focused copper gold exploration company, is pleased to announce a placement to raise \$1,050,000 through the issue of 105,000,000 fully paid ordinary shares at \$0.01 per share (**Placement Shares**).

Funds raised from the Placement will be used to advance the Company’s 2025 Queensland copper/gold exploration projects and for general working capital.

29,234,258 Placement Shares will be issued under the Company’s existing placement capacity as provided for by ASX Listing Rule 7.1 and 70,765,742 Placement Shares will be issued under the Company’s existing placement capacity as provided for by ASX Listing Rule 7.1A.

A further 5,000,000 Placement Shares have been applied for by Mr Mark Burke (Coppermoly’s Managing Director). The Issue of Shares to Mr Burke will be subject of shareholder approval at a meeting of shareholders on 24 February 2025.

Commenting on the outcome, Managing Director Mark Burke said: *“Coppermoly is delighted to have the backing and support of these sophisticated investors. This will aid in our intention to advance our exploration program in the Mt Isa and Cloncurry regions of QLD in 2025”*

This ASX announcement has been authorised for release by the Board of Directors.

For further information please visit the Company’s website at www.coppermoly.com.au or contact:

Mark Burke

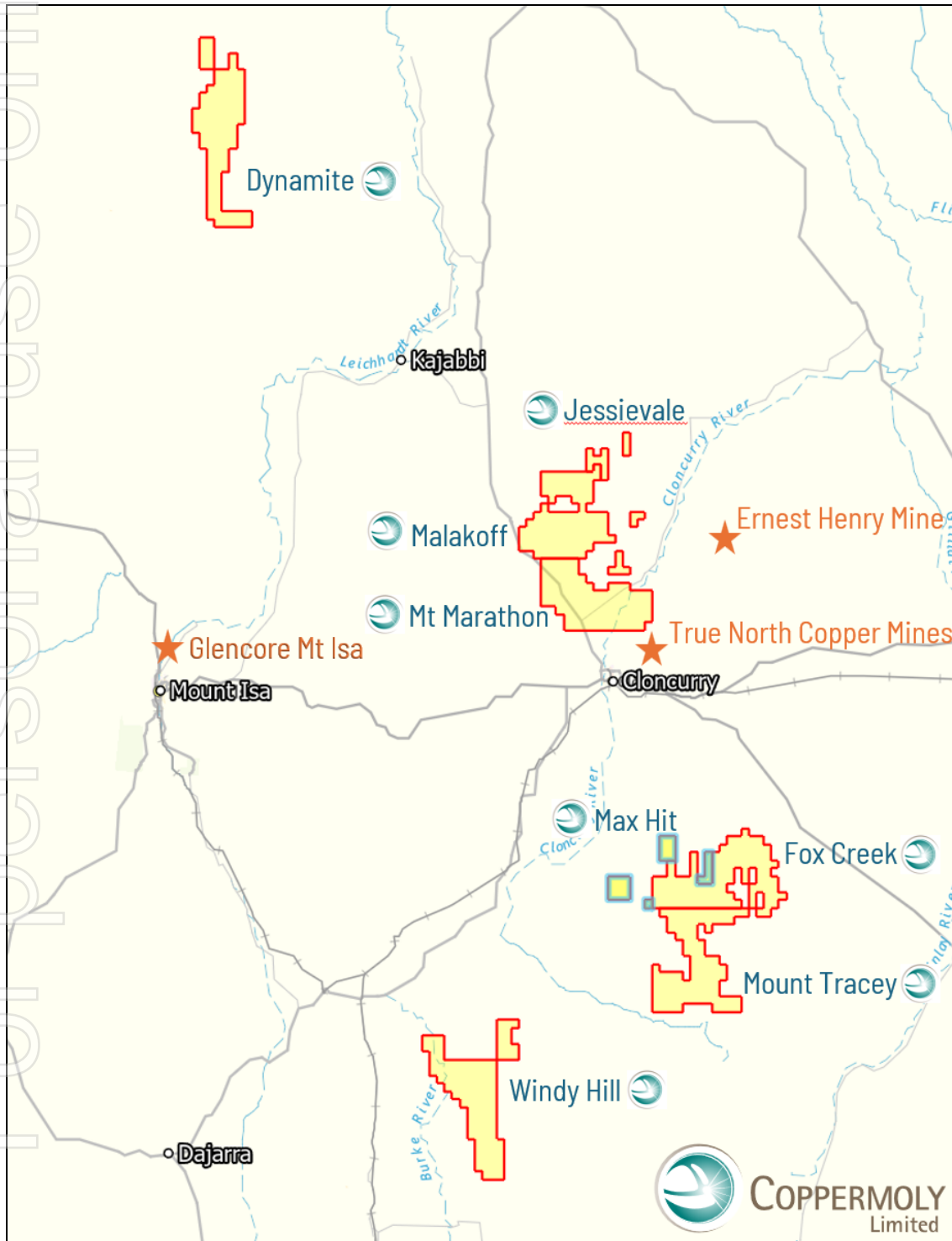
Managing Director

+61 448 349 997

mburke@coppermoly.com.au

ABOUT COPPERMOLY LTD

Coppermoly Ltd is a mineral exploration and resource development company rapidly advancing an exciting portfolio of copper/gold/molybdenum exploration projects in the resource rich Mount Isa Region of QLD. The newly refreshed management and geological team are focused on the accelerated exploration program and resource definition of their high value QLD targets. The Mt Isa Inlier is highly prospective for iron oxide copper gold (IOCG) and shear hosted Cu +/- Au deposits.



www.coppermoly.com.au