



MINERALS

ASX Code: SVY

Finding the energy metals the world needs for a low-carbon future

High-Impact Exploration in Emerging Copper and Nickel Provinces

Update – 23 January 2025

ersonal use only



- This presentation contains only an overview of Stavely Minerals Limited (“Stavely” or the “Company”) and its activities and operations. The contents of this presentation, including matters relating to the geology and exploration potential of the Company’s projects, may rely on various assumptions and subjective interpretations which it is not possible to detail in this presentation and which have not been subject to any independent verification.
- This presentation contains a number of forward-looking statements. Known and unknown risks and uncertainties, and factors outside of the Company’s control, may cause the actual results, performance and achievements of the Company to differ materially from those expressed or implied in this presentation.
- To the maximum extent permitted by law, Stavely does not warrant the accuracy, currency or completeness of the information in this presentation, nor the future performance of the Company, and will not be responsible for any loss or damage arising from the use of the information.
- The information contained in this presentation is not a substitute for detailed investigation or analysis of any particular issue. Current and potential investors should seek independent advice before making any investment decision in regard to the Company or its activities.



What does Stavely Minerals offer that is different?



BIG targets





Stavely Project - Thursday's Gossan Prospect

- **Cayley Lode** high-grade Cu-Au-Ag discovery
 - **9.3Mt at 1.23% Cu, 0.23g/t Au and 7.1g/t Ag²**
- **Junction Lode**
 - *35m at 3.44% Cu and 26g/t Ag³*
 - *New structural interpretation provides discovery opportunity*
 - **Recent aircore drilling results are impressive – follow-up diamond drilling in-progress**
- **S41 Breccia-Hosted Gold**
 - *~2km long x 750m wide hydrothermal breccia, potential for scale*
 - *only 1 x diamond drill hole to date*
 - *Carbonate – base metal – gold system eg.: Kidston, Mt Leyshon, Kelian*



Hawkstone Magmatic Ni-Cu-Co Project¹

- Adjacent to IGO / Buxton Merlin / Double Magic discovery – ave. 8% Ni tenor, Dogleg discovery – emerging magmatic nickel province
 - *Eg. Nova & Bollinger, Jinchuan, Voisey's Bay*

¹ See ASX announcement 23 May 2023

² See ASX announcement 14 June 2022, Appendix 1

³ See Stavely Minerals Prospectus April 2014



STAVELY

MINERALS

ASX Code: SVY

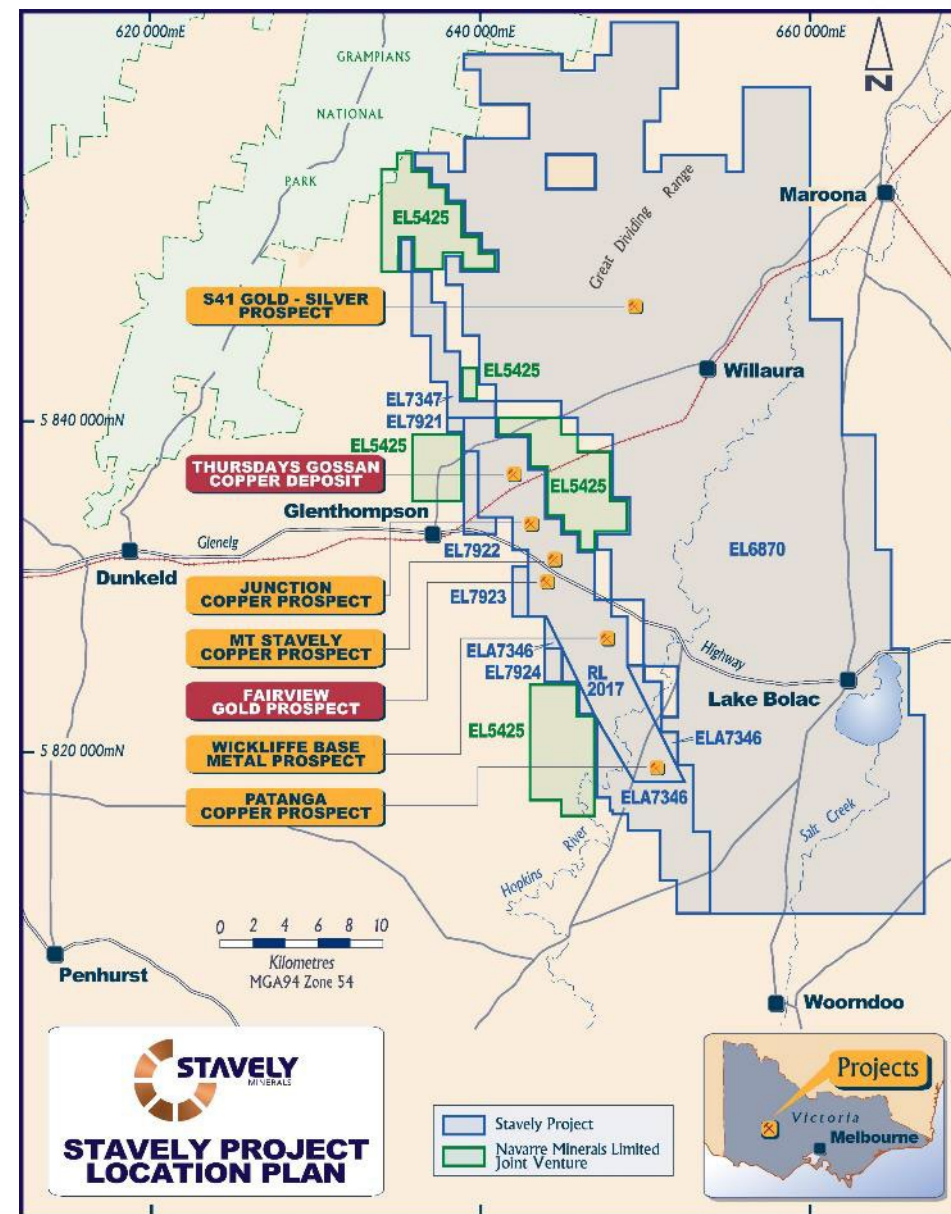
Stavelly Project

ersonal use only

Stavely Project



- **Discovery** – outstanding shallow high-grade copper-gold-silver discovery (September 2019), the **Cayley Lode**
- **Multiple regional discovery opportunities:**
 - *Junction Lode – 35m at 3.44% Cu and 26g/t Ag from 24m to end of hole*
 - *New structural interpretation opens immediate discovery opportunity and recent aircore drilling assays impressive¹:*
 - *14m @ 3.24% Cu, 34.5g/t Ag from 34m drill depth in SJAC105, including:*
 - *8m at 4.62% Cu and 49.5g/t Ag from 34m, including:*
 - *2m at 6.47% Cu and 59.5g/t Ag from 36m*
 - *48m at 1.60% Cu and 14.8g/t Ag from 2m drill depth in SJAC112, including:*
 - *8m at 2.53% Cu and 26.1g/t Ag from 34m*
 - *S41 breccia-hosted gold – 2km x 750m breccia pipe*
 - *Only 1 x diamond drill hole in large system, scale potential*



¹ See ASX announcement 3 October 2023

The Cayley Lode Mineral Resources Estimate



- **Discovery** – outstanding shallow high-grade copper-gold-silver discovery (September 2019), the Cayley Lode
- **Cayley Lode MRE¹** – 9.3Mt at 1.23% Cu, 0.23g/t Au and 7.1g/t Ag
- **Total Resources** – 28.3Mt at 0.75% Cu, 0.11g/t Au and 3.5g/t Ag
- **Containing** – 210,000t Cu, 100,000oz Au, 3.2Moz Ag and 2.4kt Zn



Cayley Lode bornite mineralisation - photo from ASX announcement 11 September 2019

¹ Reported in compliance with the JORC Code 2012, see ASX announcement 14 June 2022, see Appendix 1 for classifications



STAVELY

MINERALS

ASX Code: SVY

Junction Lode Discovery Opportunity

ersonal use only

Junction Lode Discovery Opportunity

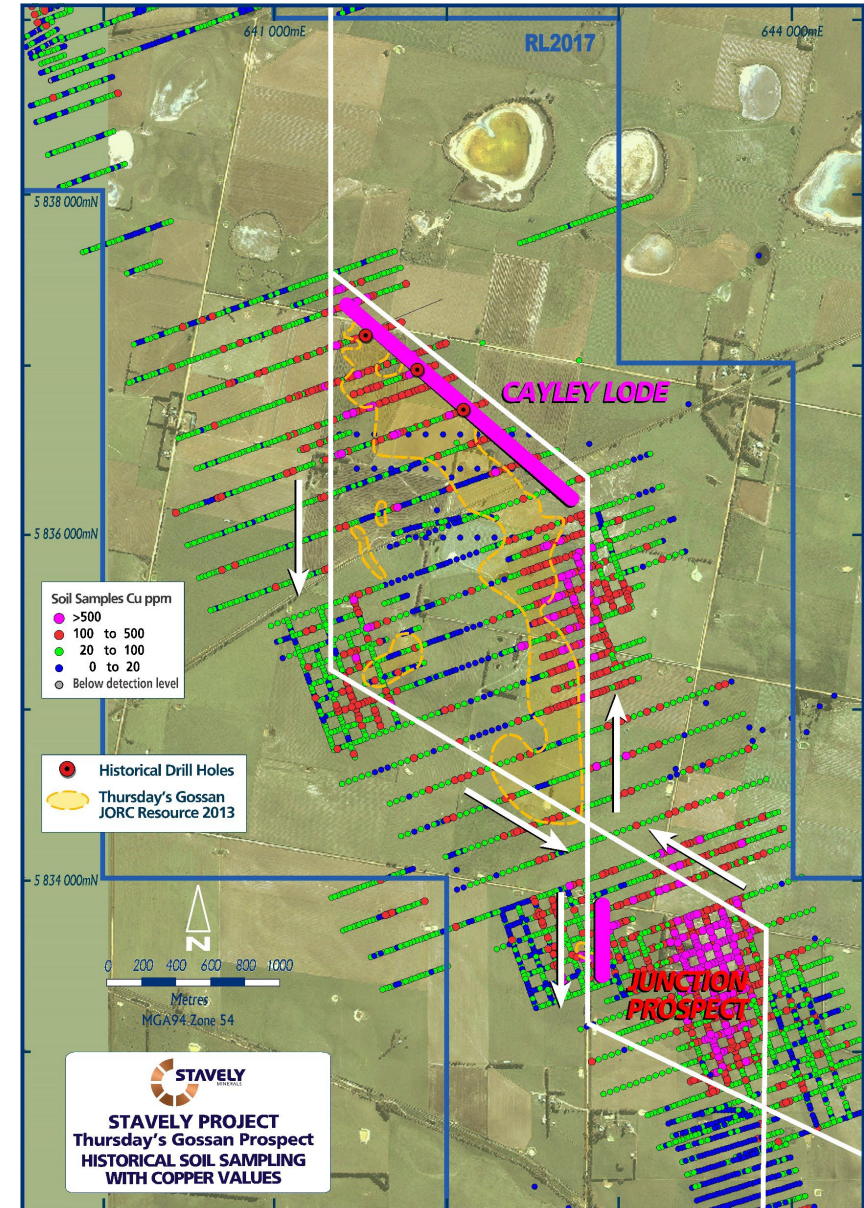


Junction is the largest copper in soil auger anomaly in the entire Stavely Project, located ~2km south of the Cayley Lode.

Historic intercepts at the Junction Prospect include¹:

- 35m at 3.44% Cu and 26g/t Ag from 24m drill depth to end-of-hole (EoH) in TGAC078
- 11m at 1.72% Cu and 26g/t Ag from 33m in TGRC087
- 2m at 5.10% Cu and 6g/t Ag from 2m and 6m at 3.90% Cu and 25g/t Ag from 28m to EoH in PENP004
- 6m at 1.52% Cu and 19g/t Ag from 42m, 5m at 1.12% Cu and 10g/t Ag from 62m; and 6m at 1.77% Cu and 21g/t Ag from 72m to EoH in TGRC110
- 6m at 1.65% Cu and 16g/t Ag from 37m in TGRC109

¹ See ASX announcement 14 May 2024 and Stavely Minerals Prospectus April 2014



Junction Lode Discovery Opportunity

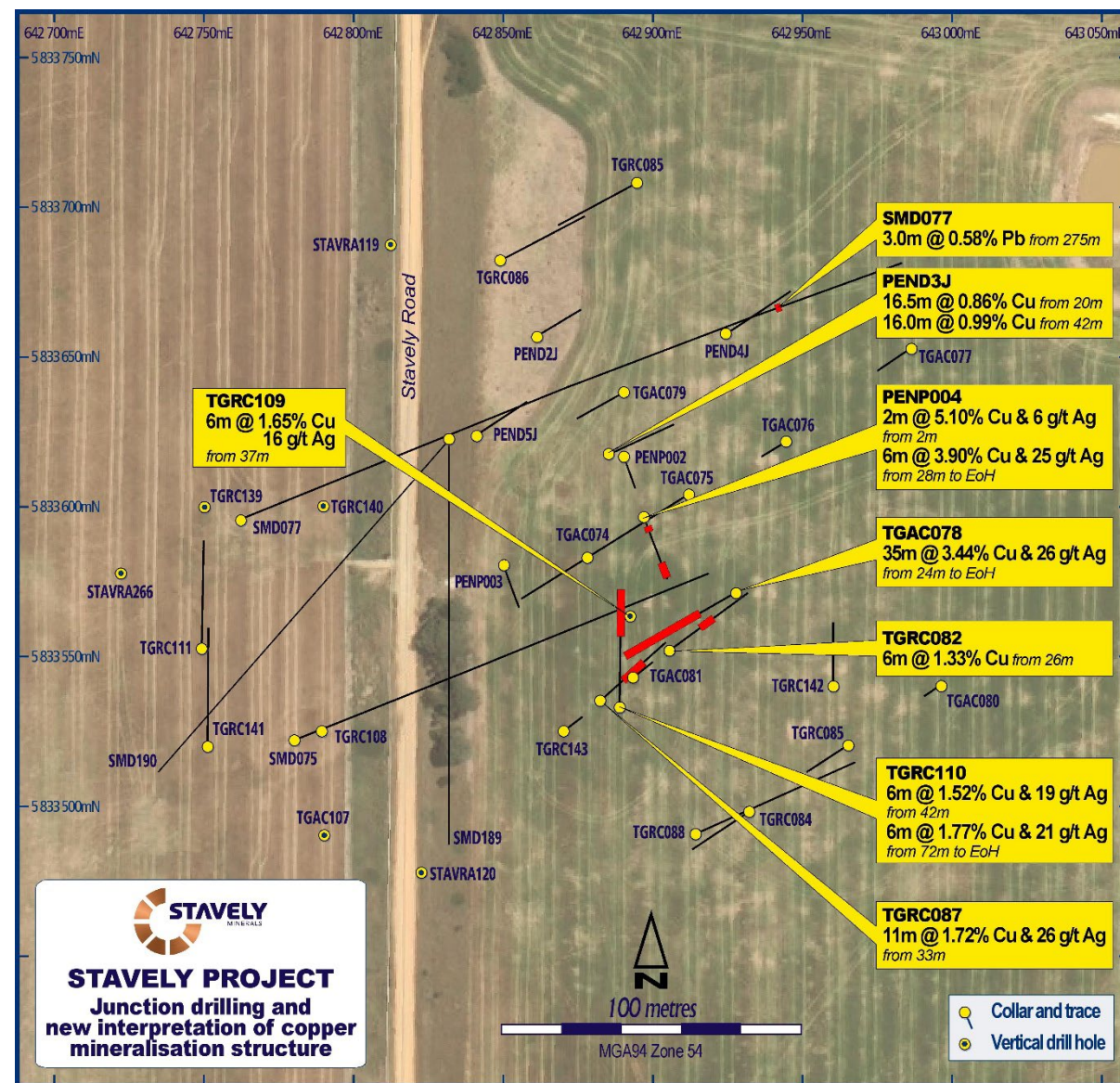


Historic intercepts at the Junction Prospect include¹:

- 35m at 3.44% Cu and 26g/t Ag from 24m drill depth to end-of-hole (EoH) in TGAC078
- 11m at 1.72% Cu and 26g/t Ag from 33m in TGRC087
- 2m at 5.10% Cu and 6g/t Ag from 2m and 6m at 3.90% Cu and 25g/t Ag from 28m to EoH in PENP004
- 6m at 1.52% Cu and 19g/t Ag from 42m, 5m at 1.12% Cu and 10g/t Ag from 62m; and 6m at 1.77% Cu and 21g/t Ag from 72m to EoH in TGRC110
- 6m at 1.65% Cu and 16g/t Ag from 37m in TGRC109

All previous drilling not well oriented to properly test the Junction Lode.

¹ See ASX announcement 14 May 2024 and Stavely Minerals Prospectus April 2014

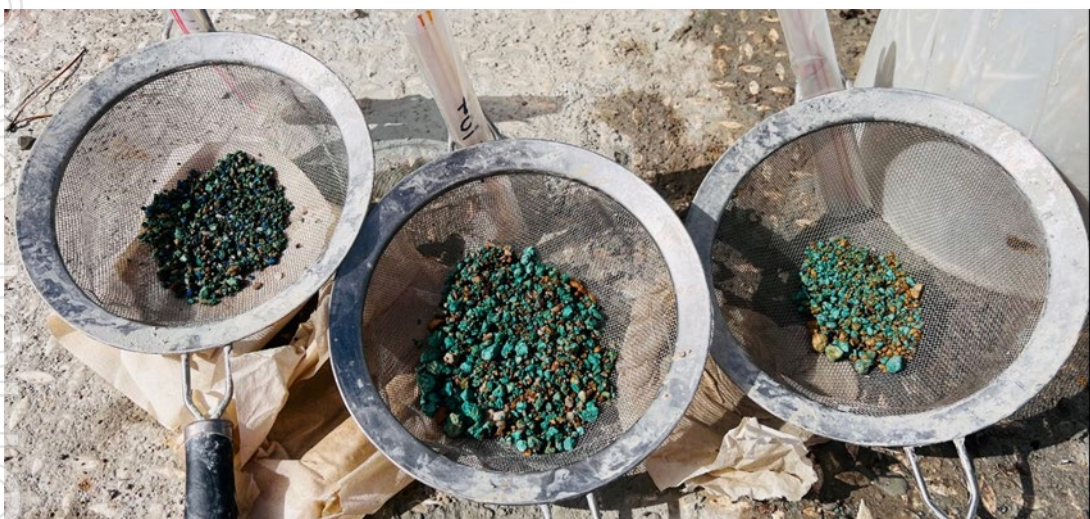


Junction Lode Discovery Opportunity



Recent aircore drilling has solved the structural controls on high-grade copper mineralisation at the Junction prospect.

- 21 aircore drill holes successfully completed¹
- Structural controls resolved



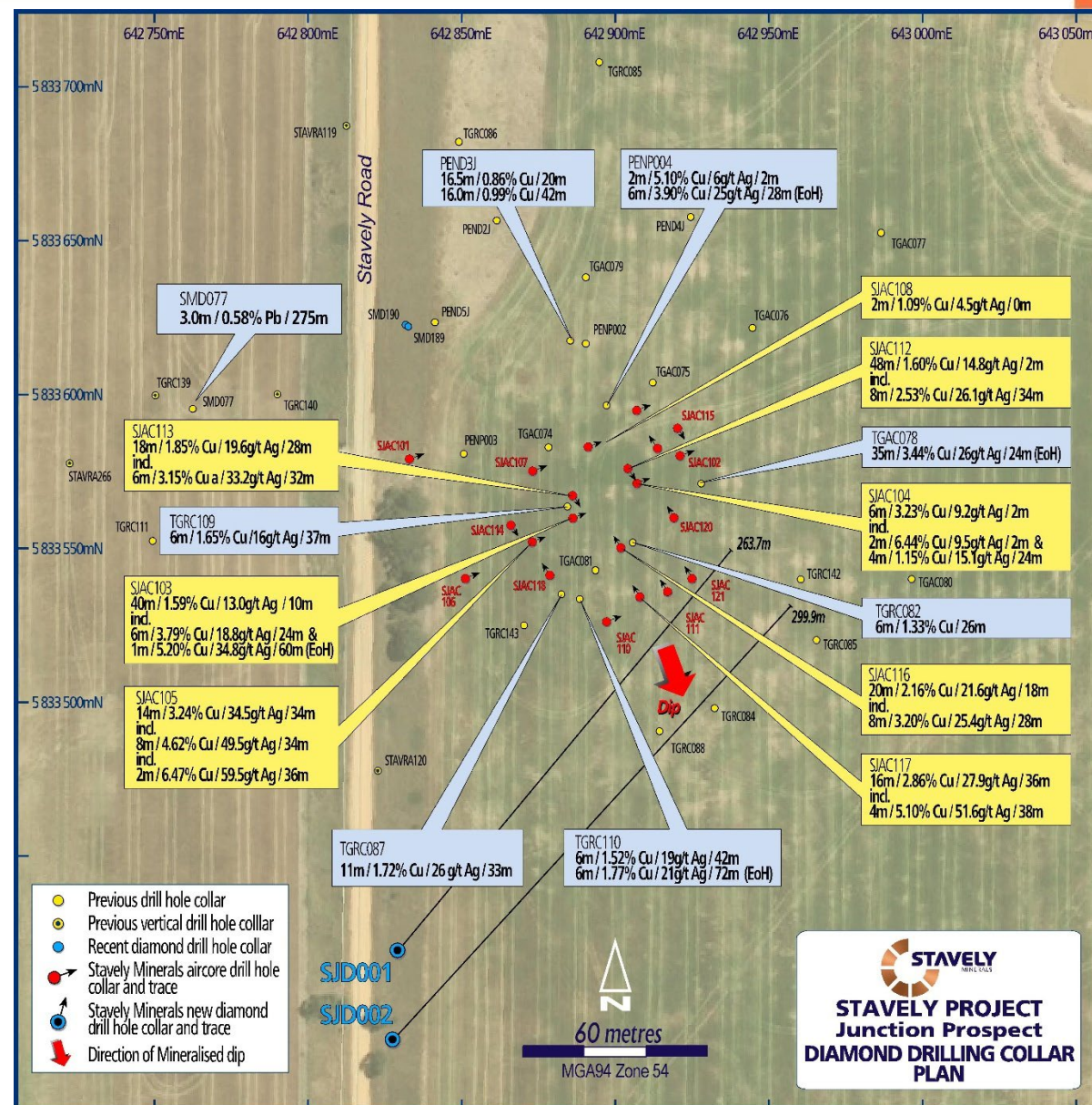
¹ See ASX announcement 11 September 2024 including all photos shown above

Junction Lode Discovery Opportunity



Significant assay results received from recent aircore drilling¹:

- 14m @ 3.24% Cu, 34.5g/t Ag from 34m drill depth in SJAC105, including:
 - 8m at 4.62% Cu and 49.5g/t Ag from 34m, including:
 - 2m at 6.47% Cu and 59.5g/t Ag from 36m
- 48m at 1.60% Cu and 14.8g/t Ag from 2m drill depth in SJAC112, including:
 - 8m at 2.53% Cu and 26.1g/t Ag from 34m
- 40m at 1.59% Cu, 13.0g/t Ag from 10m drill depth in SJAC103, including:
 - 6m at 3.79% Cu and 18.8g/t Ag from 24m; and
 - 1m at 5.20% Cu and 34.2g/t Ag from 60m to EoH
- 20m at 2.16% Cu and 21.6g/t Ag from 18m in SJAC116, including:
 - 4m at 3.83% Cu and 21.7g/t Ag from 32m
- 20m at 2.48% Cu and 24.4g/t Ag from 32m in SJAC117, including:
 - 4m at 5.10% Cu and 51.6g/t Ag from 38m
- 22m at 1.85% Cu and 19.6g/t Ag from 28m in SJAC113, including:
 - 6m at 3.15% Cu and 33.2g/t Ag from 32m
- 6m at 3.23% Cu and 9.2g/t Ag from 2m in SJAC104, including:
 - 2m at 6.44% Cu and 9.5g/t Ag from 2m, and
 - 4m at 1.15% Cu and 15.1g/t Ag from 24m



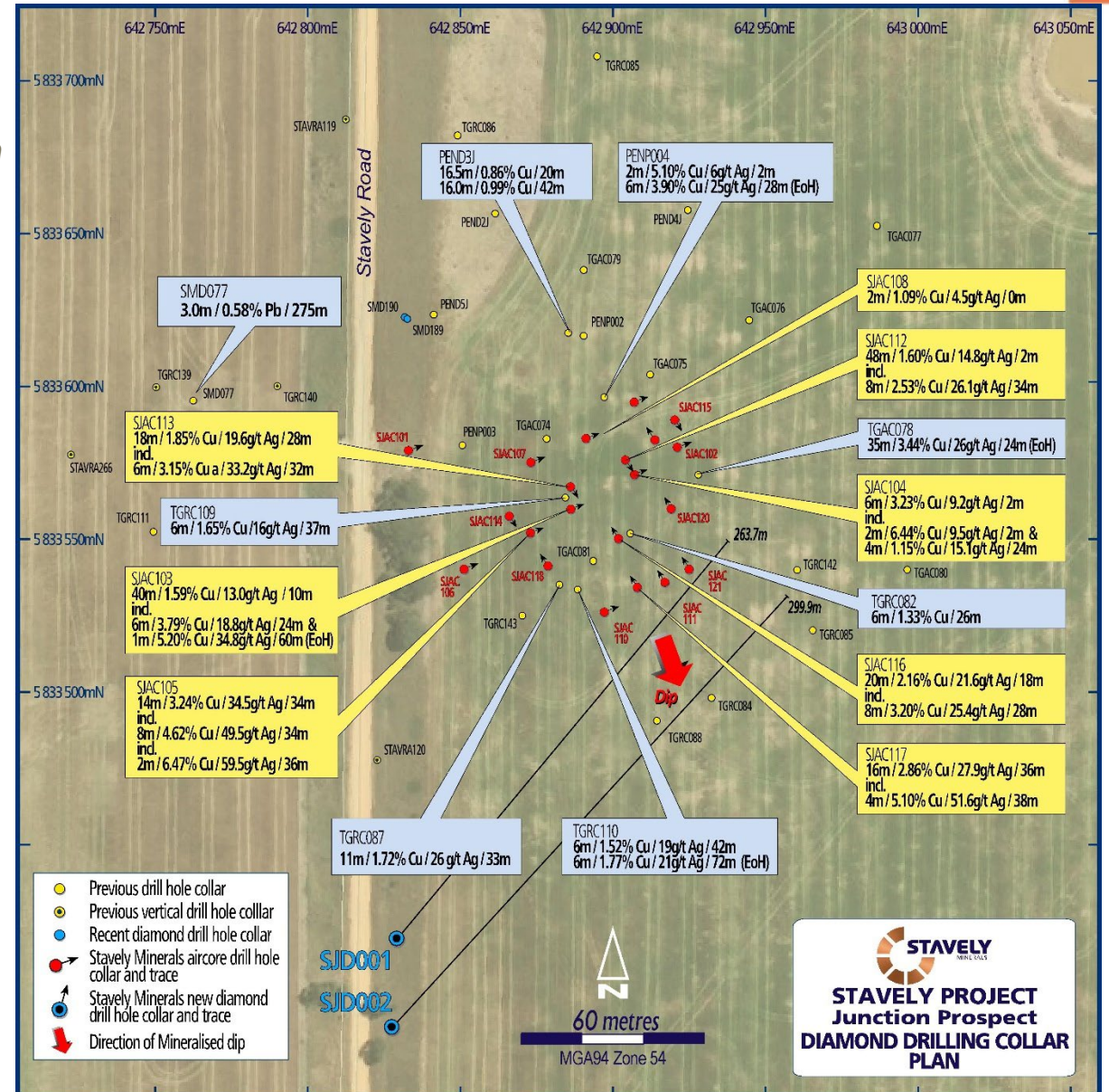
¹ See ASX announcements 1 October 2024 and 15 November 2024

Junction Lode Discovery Opportunity



Recent diamond drilling¹:

- While not at an optimal angle to test Junction at depth, the mineralisation is evident at ~150m below the deepest intercept in the aircore drilling – priority is to get land access



¹ See ASX announcement 21 January 2025

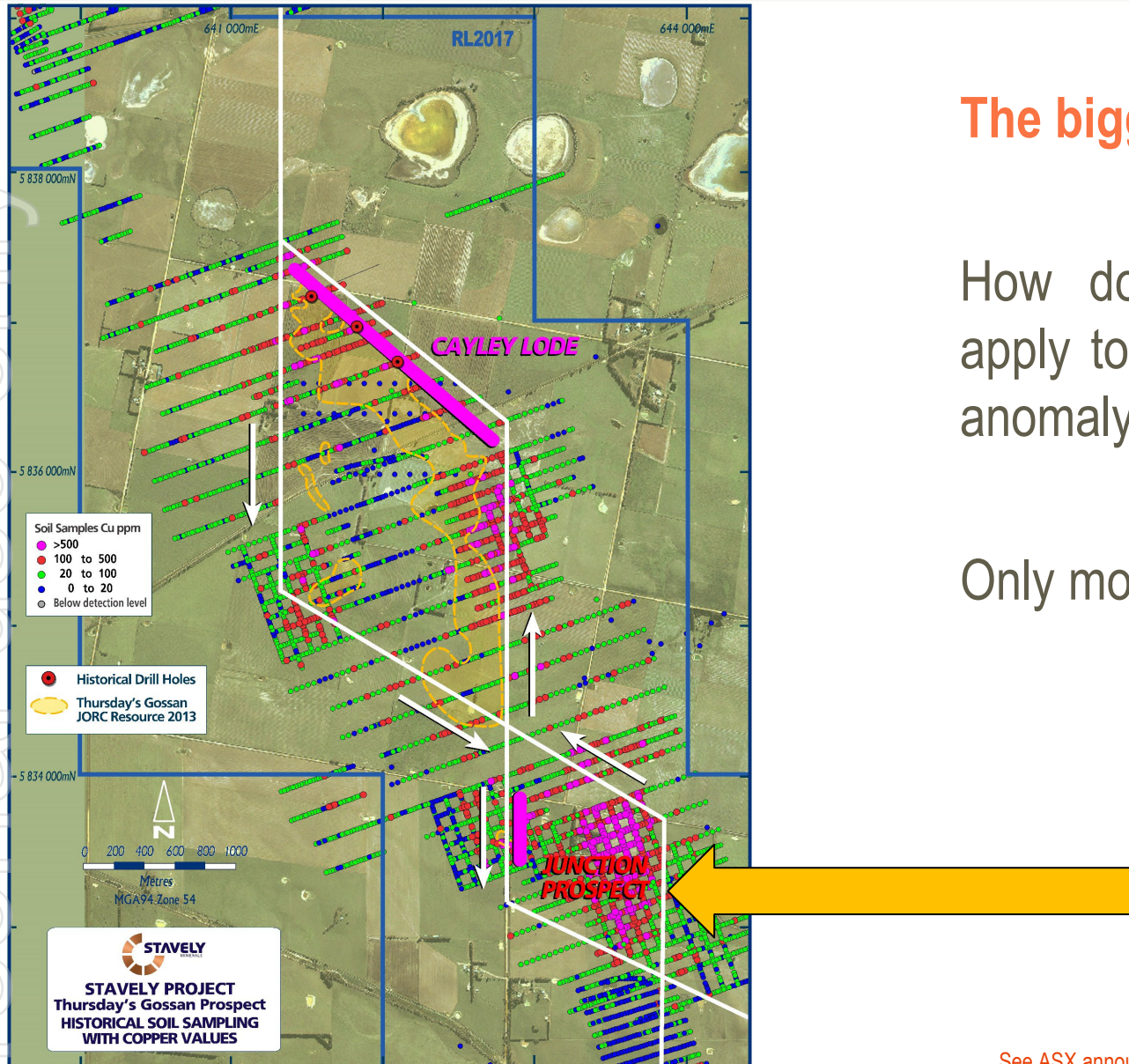
Junction Lode Discovery Opportunity



The bigger question is:

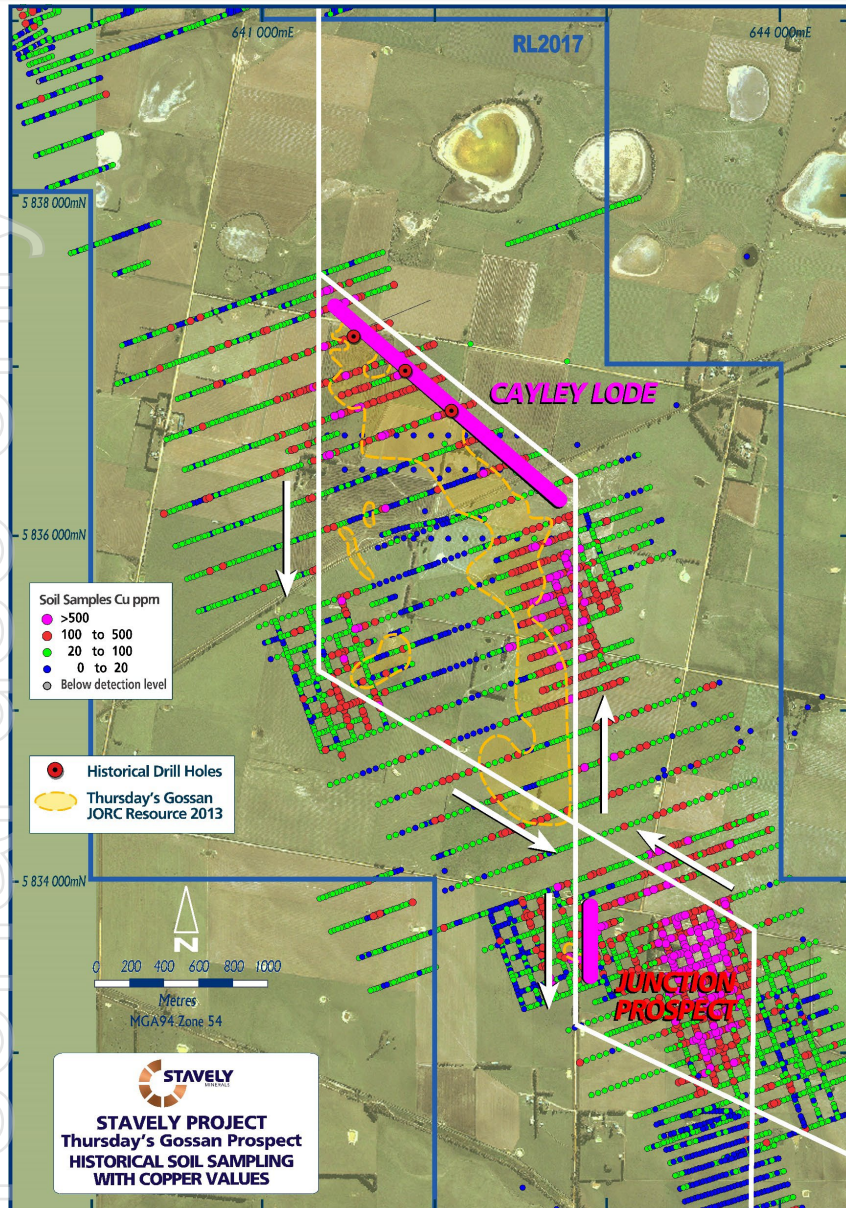
How does the new structural understanding apply to the biggest copper in soil geochemical anomaly in the whole project?

Only more drilling will answer this question!



See ASX announcement 1 October 2024

Junction Lode Discovery Opportunity – Next Steps



Next Steps:

- Diamond drill under the recent aircore intercepts – this can be done from the road verge – not ideal
- With landowner consent required, additional aircore drilling on additional zones north of recent aircore drilling
- With landowner consent required, aircore drilling of the large copper in soil anomaly
 - *Access offer on the table*
- Planned diamond drilling if positive aircore results warrant follow-up

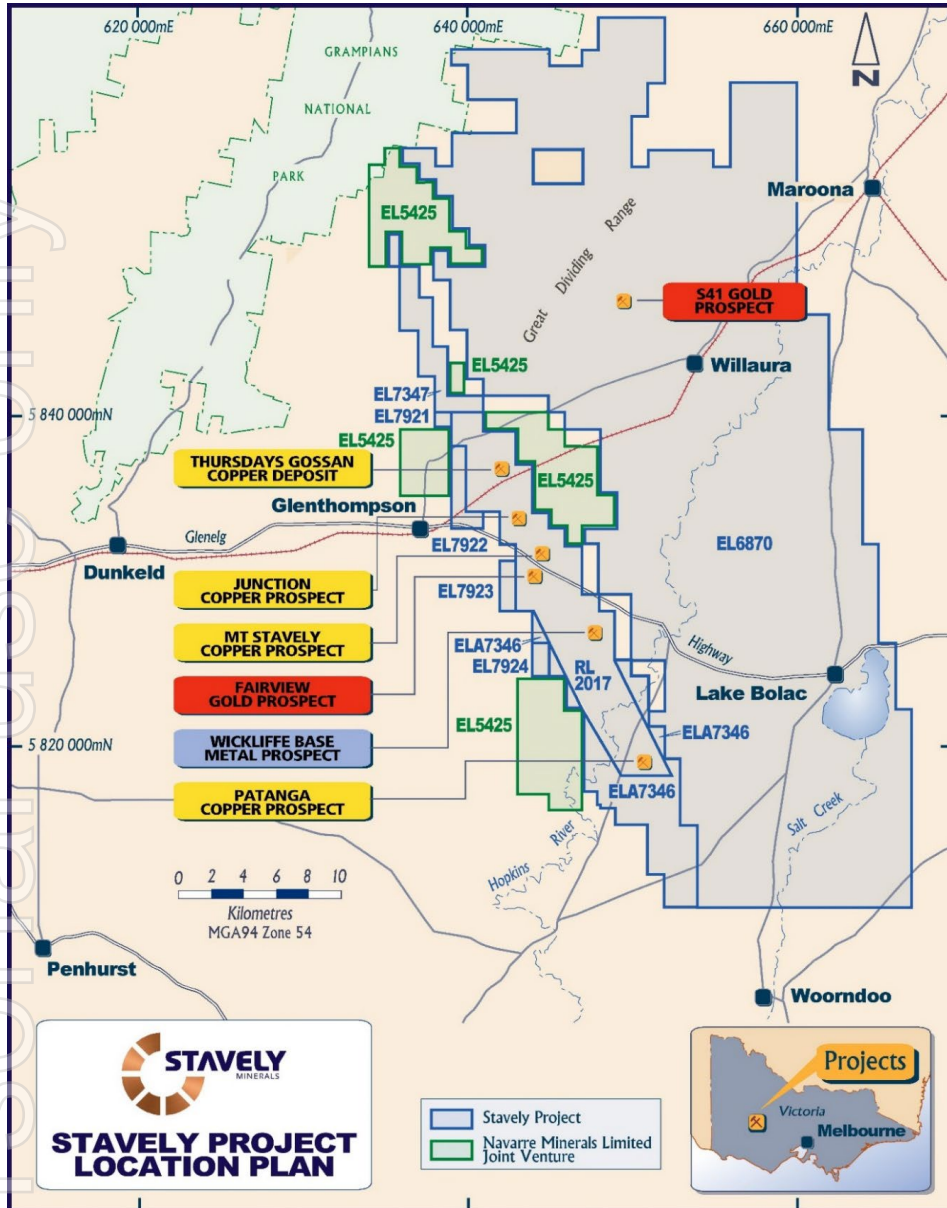
See ASX announcement 1 October 2024



S41 Breccia-Hosted Gold Target

ersonal use only

Emerging Discovery? – The S41 Breccia Prospect



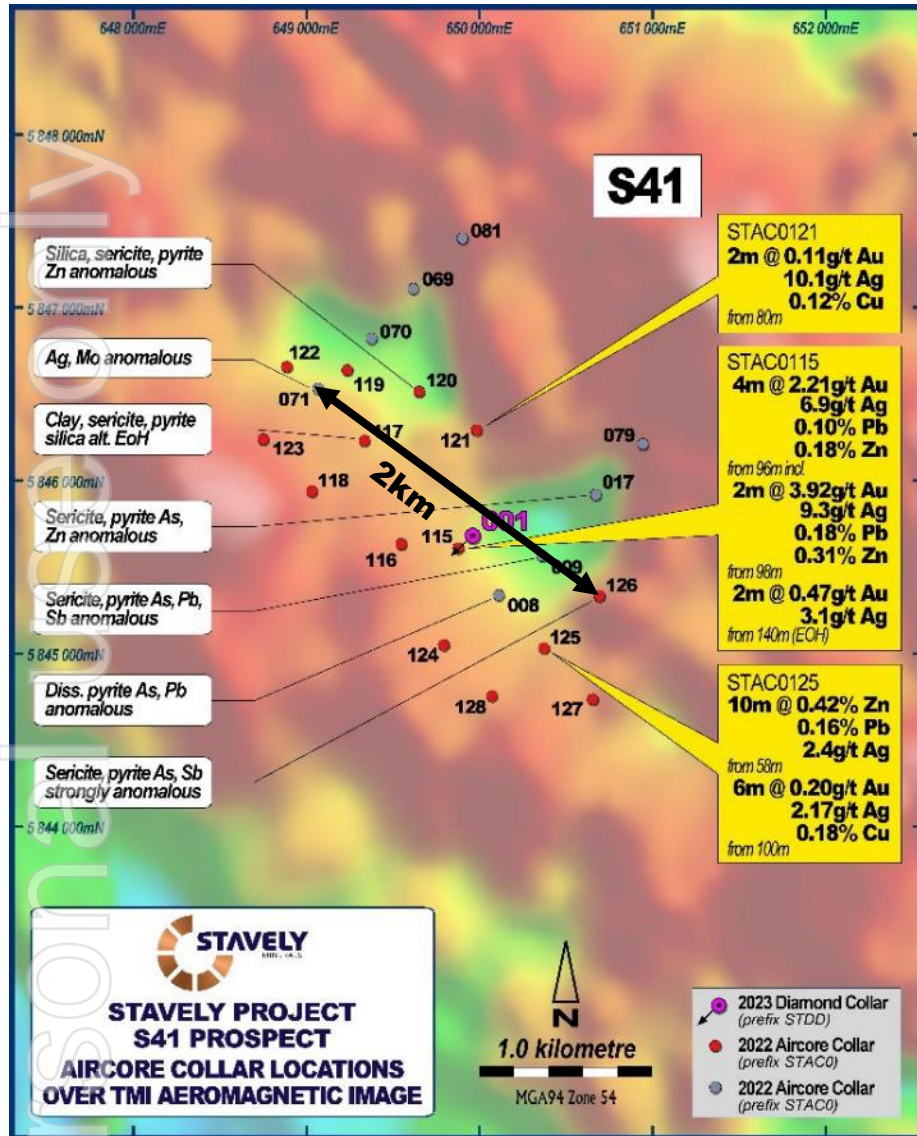
S41 Breccia-Hosted Gold Prospect

- Identified in Stavely Minerals' Falcon Gravity Gradiometer[®] survey under 50m of basalt

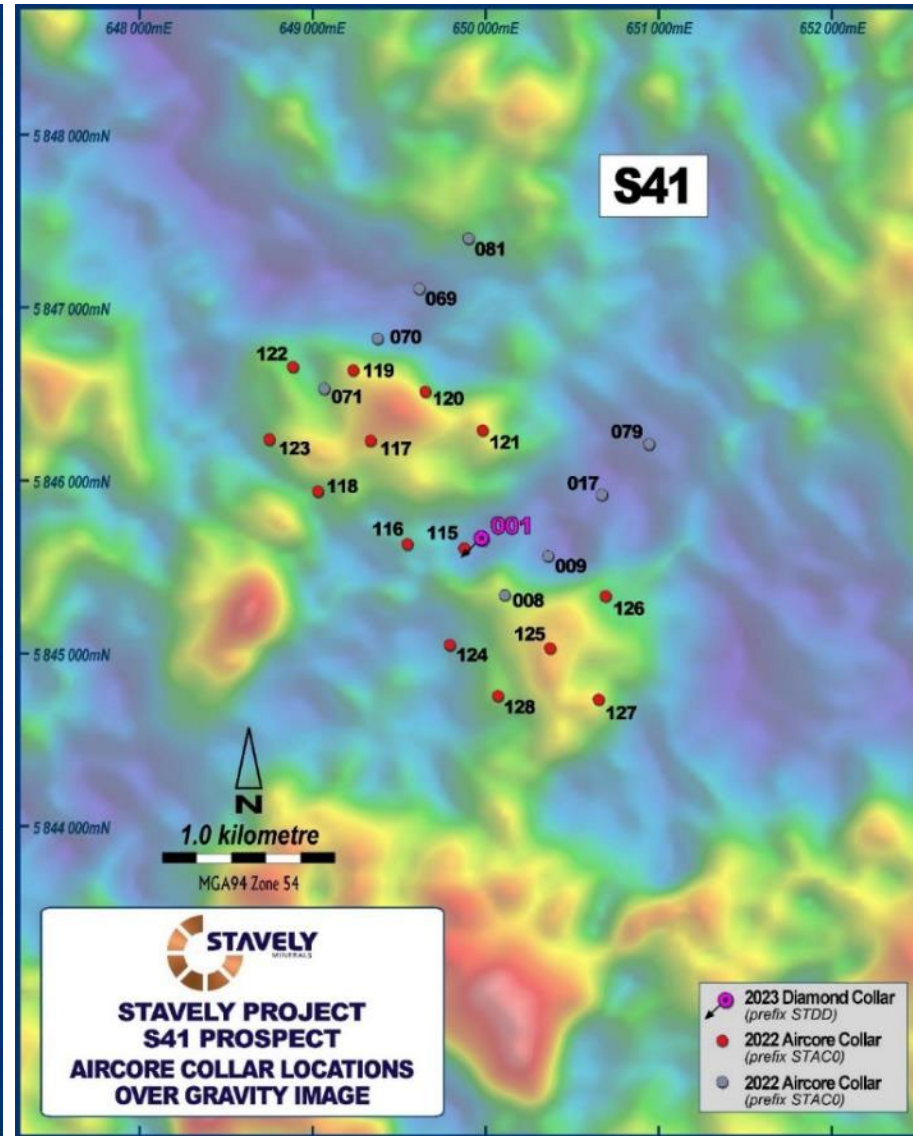
Emerging Discovery? – The S41 Breccia-Hosted Gold Prospect



Magnetics



Gravity

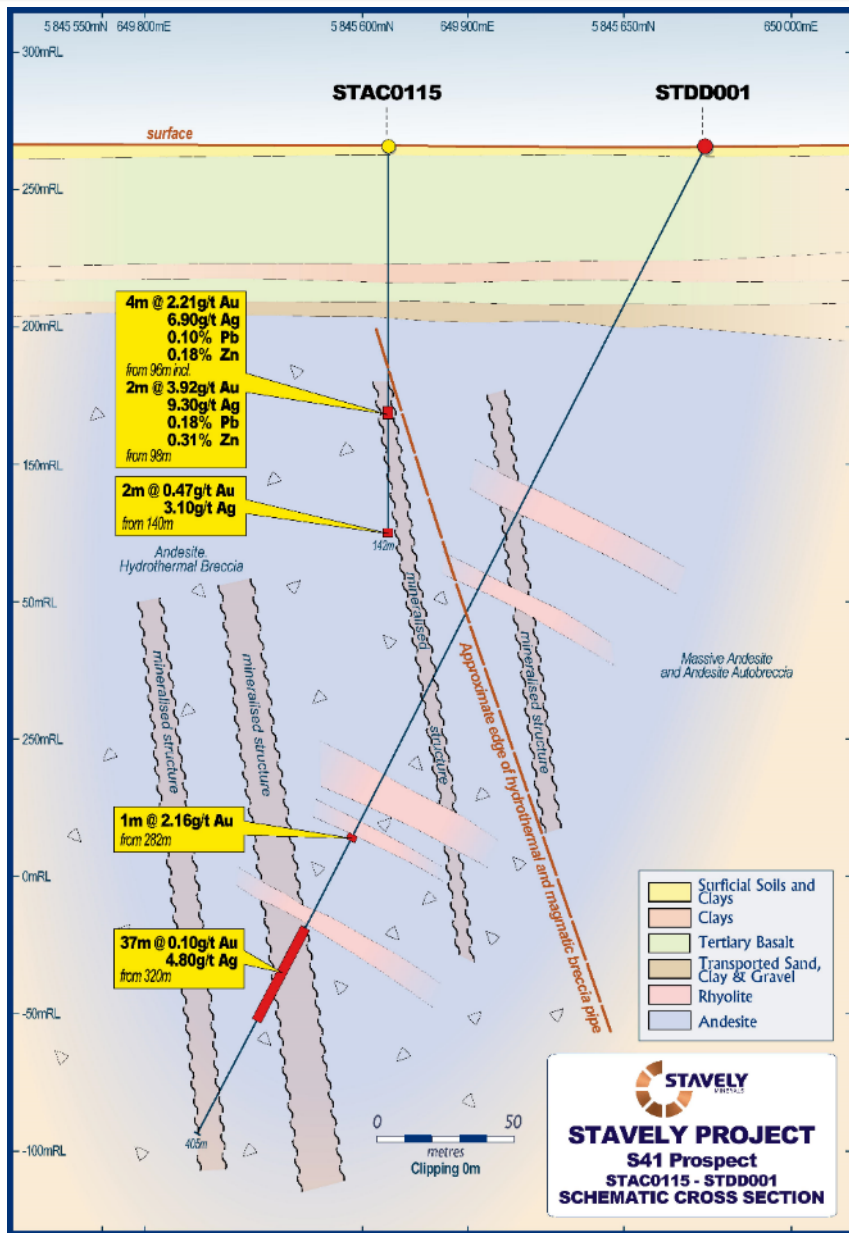


S41 Prospect Aircore¹

- **4m at 2.21g/t Au** from 96m drill depth, including:
- **2m at 3.92g/t Au** from 98m in aircore drilling
- Large 2km alteration zone
- Strongly anomalous base metals and pathfinder geochemistry

¹See ASX announcement 19/04/2023

Emerging Discovery? – The S41 Breccia Prospect

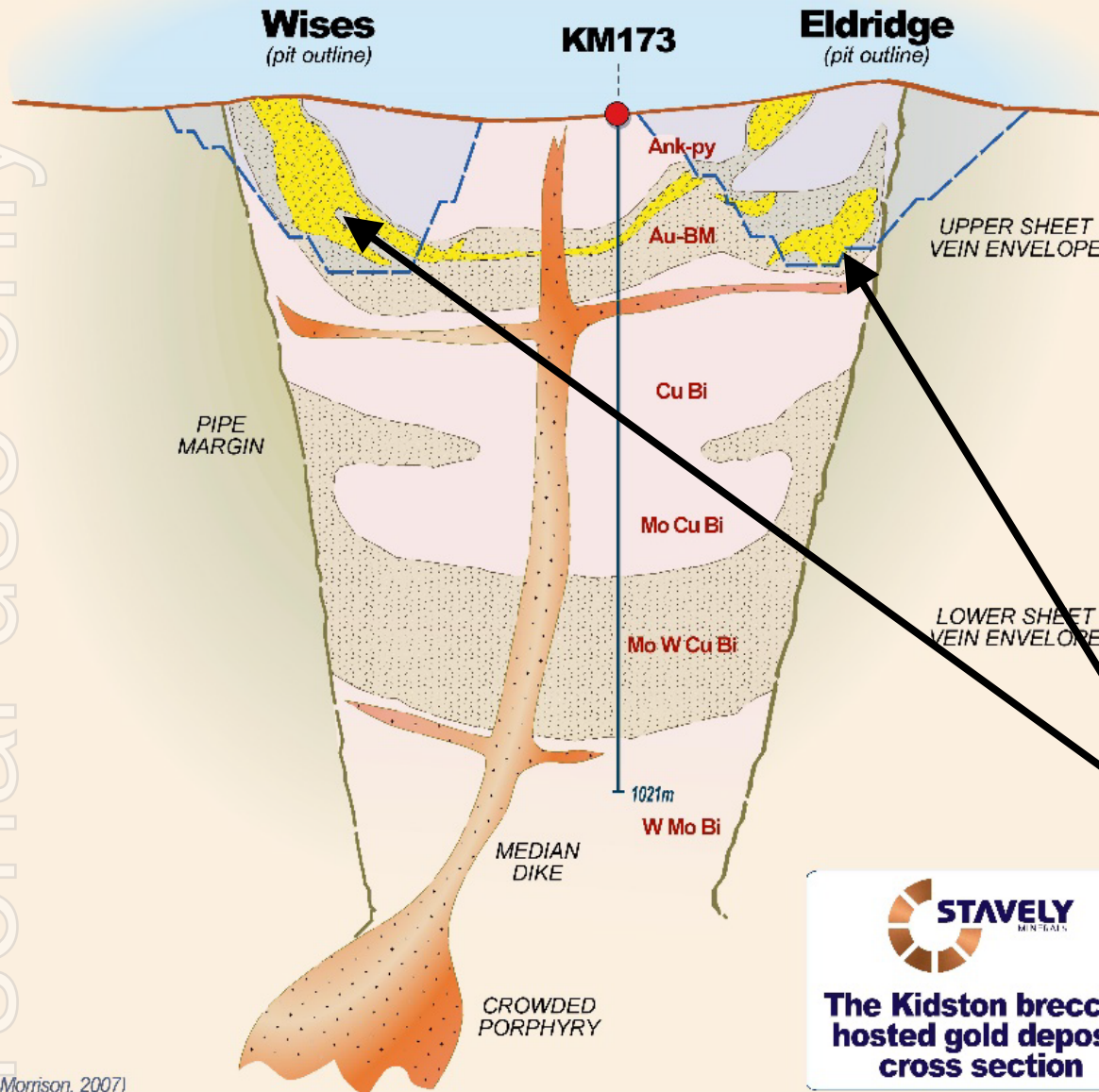


S41 Diamond Drill Hole¹

- Only one diamond drill hole in the 2,000m x 750m interpreted breccia system
- **1m at 2.16g/t Au** from 282m drill depth
- **37m at 0.10g/t Au**, including:
 - **2m at 0.56g/t Au** from 320m, and
 - **5m at 24.3g/t Ag** from 353m
- Importantly demonstrated that there is gold and silver in the system associated with Mn-carbonate and Zn & Pb base metals
- Breccia-hosted systems host notoriously inconsistent gold mineralization eg. Kidston
- Potential for scale

¹See ASX announcement 26/04/2023

Emerging Discovery? – The S41 Breccia-Hosted Gold Prospect



(after G. Morrison, 2007)

S41 Diamond Drill Hole¹

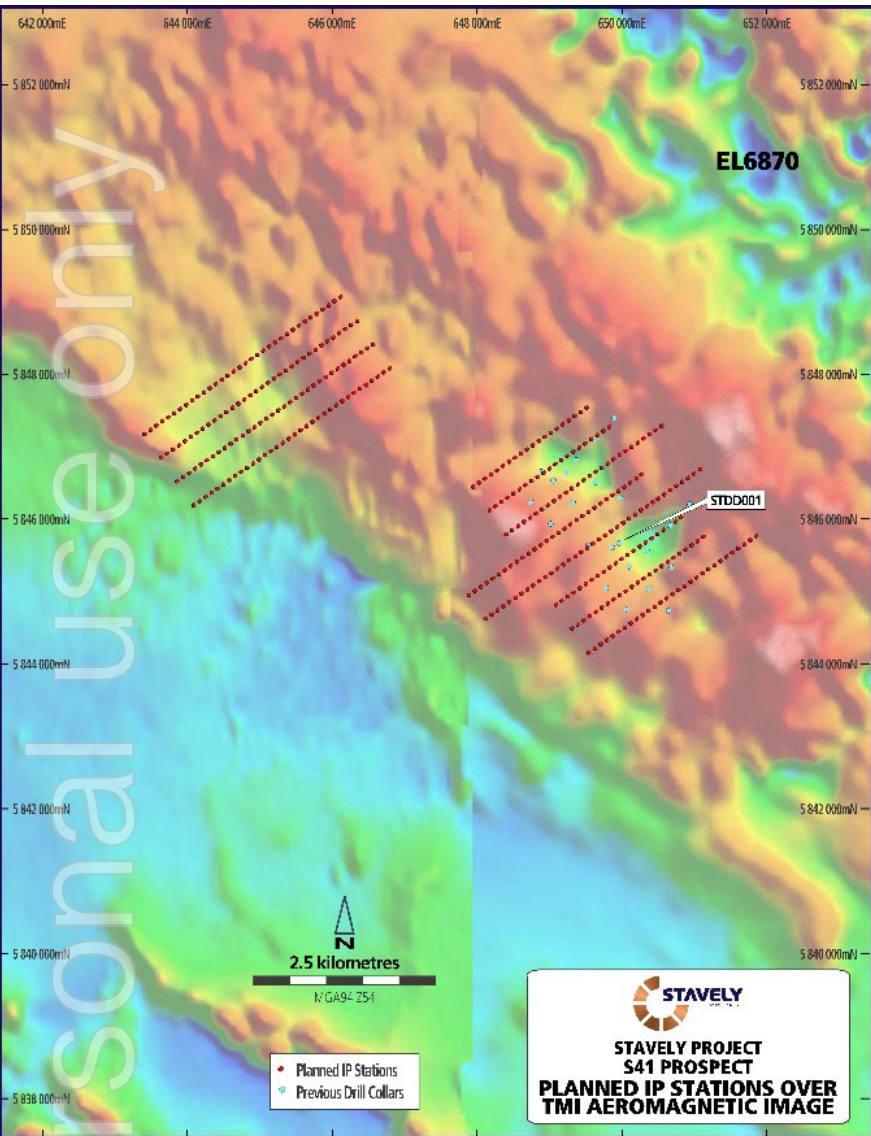
- Only one diamond drill hole in the 2,000m x 750m interpreted breccia system
- **1m at 2.16g/t Au** from 282m drill depth
- **37m at 0.10g/t Au**, including:
 - **2m at 0.56g/t Au** from 320m, and
 - **5m at 24.3g/t Ag** from 353m
- Importantly demonstrated that there is gold and silver in the system associated with Mn-carbonate and Zn & Pb base metals
- Breccia-hosted systems host notoriously inconsistent gold mineralization eg. Kidston
- Potential for scale

¹See ASX announcement 26/04/2023

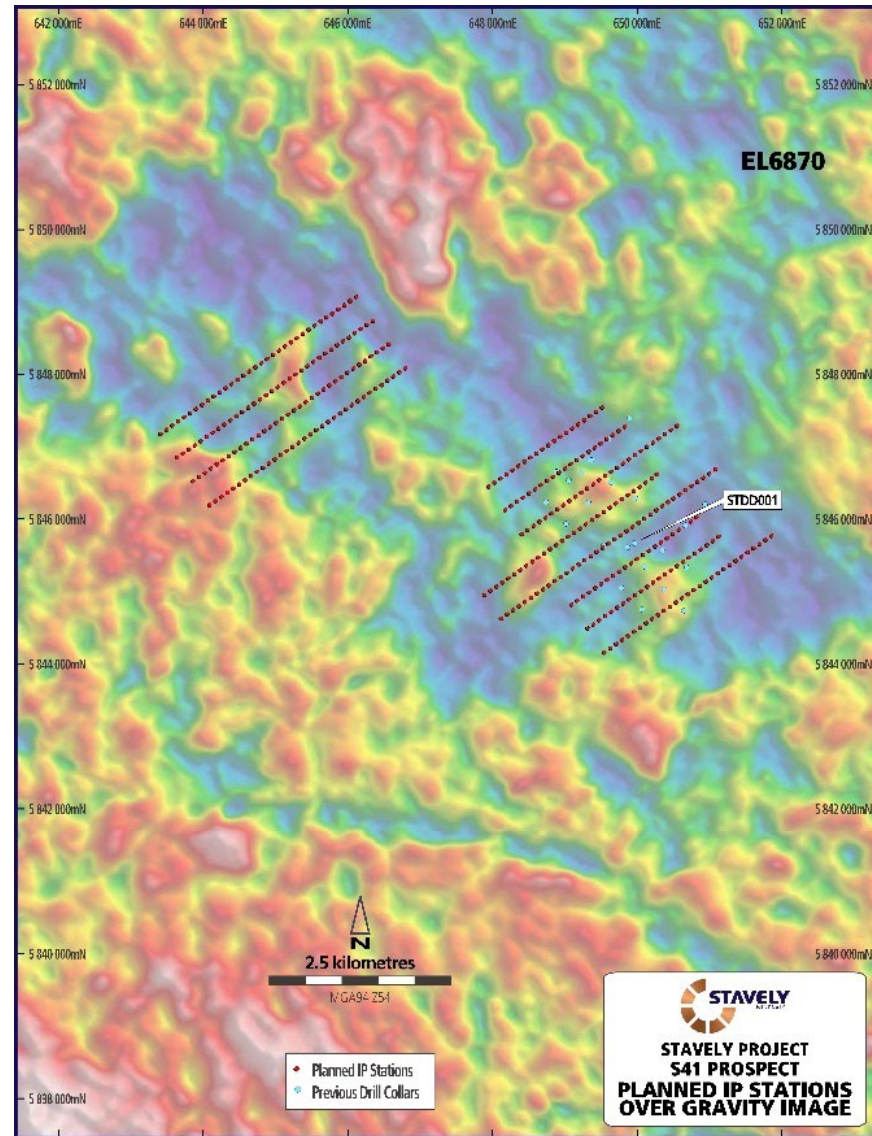
Emerging Discovery? – The S41 Breccia-Hosted Gold Prospect



Magnetics



Gravity



S41 Prospect Geophysics¹

- Pending Induced Polarisation (IP) geophysical program
- Should 'see' through the basalt and identify zones of better developed sulphide mineralisation
- Follow-up aircore drilling and then, based on results, likely diamond drilling

¹See ASX announcement 21/01/2025



The demise of sulphide nickel has been grossly exaggerated

- with apologies to Mark Twain

ersonal use only



If you follow the crowd and don't like nickel, close your eyes and stick your fingers in your ears...

A\$83.5m

– Nova-Bollinger EBITDA Q4 2024 **+95%** of Q4 IGO earnings

A\$294m

– Nova-Bollinger EBITDA FY2024 **+50%** of FY24 IGO earnings

IGO is a A\$4.1B company

"The stock market is filled with individuals who know the price of everything, but the value of nothing."

— Phillip Fisher

Don't be a sheep, do your own research.

Source: IGO June 2024 Quarterly Report and Presentation



STAVELY

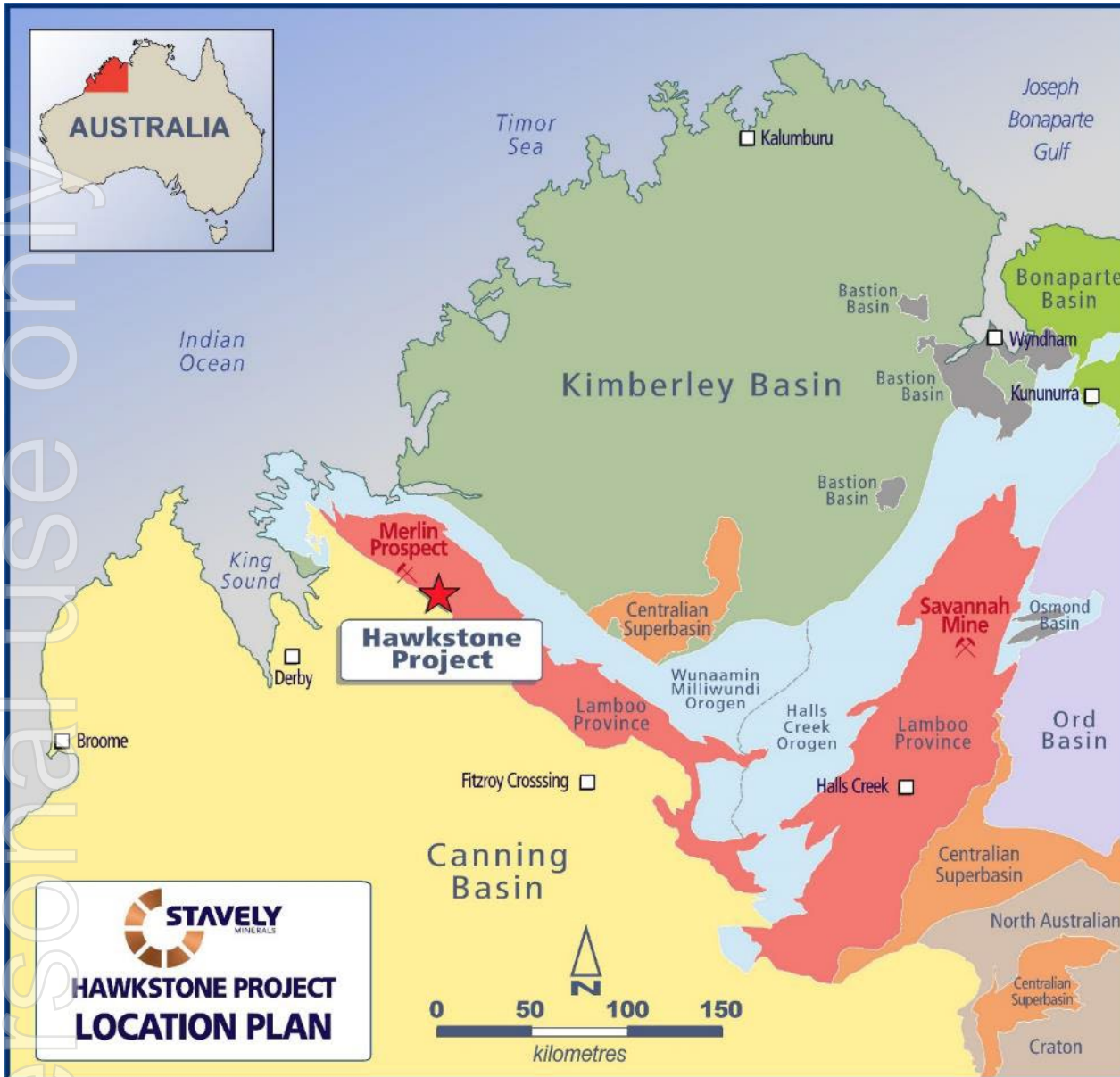
MINERALS

ASX Code: SVY

The Hawkstone Magmatic Nickel-Copper Project

ersonal use only

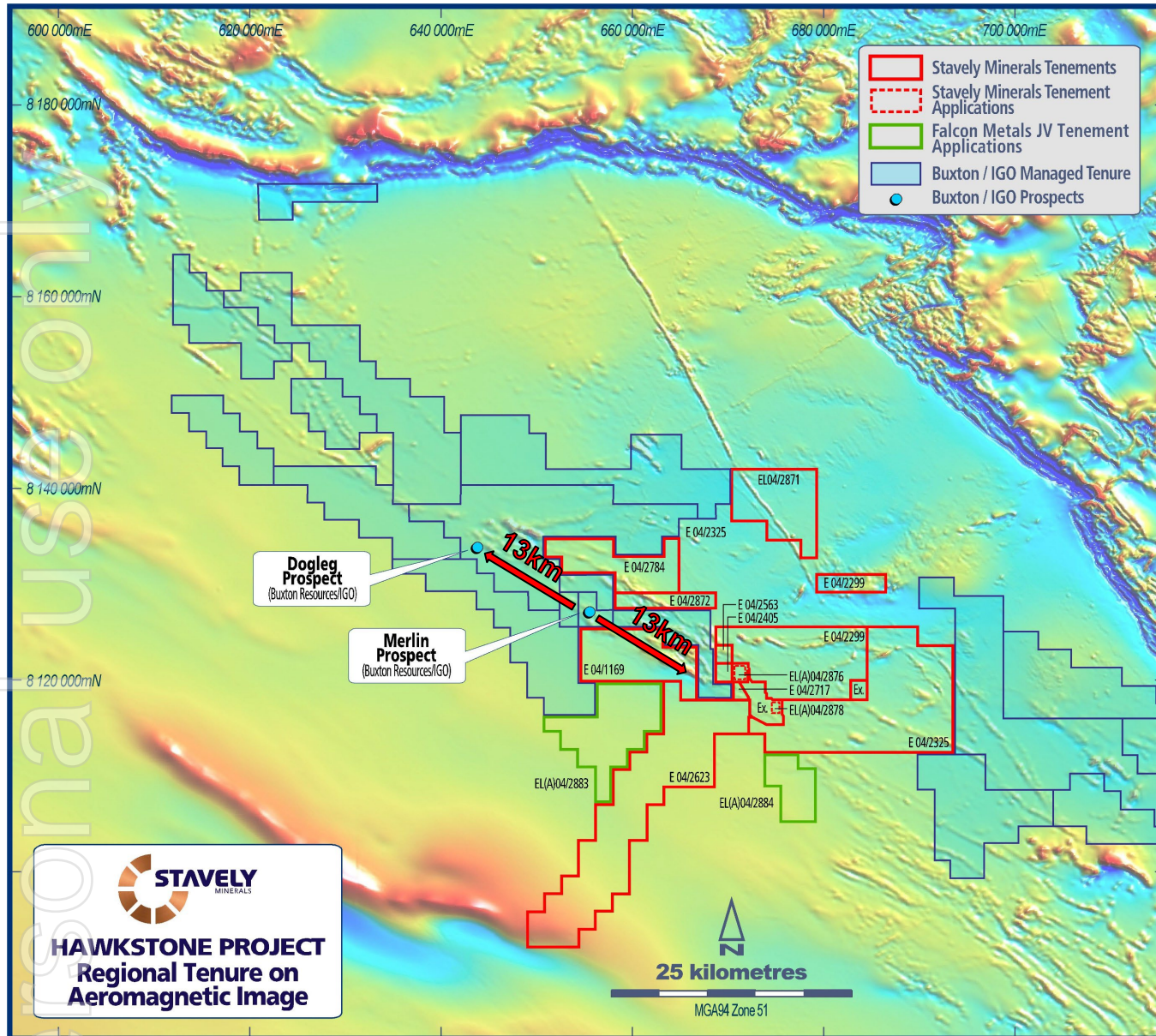
Hawkstone Ni-Cu-Co Project



Hawkstone Ni-Cu-Co Project

- ~870km² 100% tenure
- ~30km of the prospective Ruins Dolerite
- Buxton / IGO JV Merlin discovery 1km from tenement boundary
- Complementary field season (winter) to the Stavely Project (summer)
- Potential for Li pegmatites as there are historic Sn-W-Ta mines in Stavely Minerals' tenure

See ASX announcement 23/05/2023



Hawkstone Ni-Cu-Co Project

IGO / BUX Dogleg nickel discovery (Quick Shears) 13km NW of Merlin / Double Magic¹:

- 23WKDD003 – 13.85m @ 4.35% Ni, 0.34% Cu and 0.15% Co from 177.34m, incl.
 - 5.86m @ 7.47% Ni, 0.31% Cu and 0.25% Co
- 23WKDD004 – 2.89m at 4.17% Ni, 0.83% Cu and 0.14% Co from 233.63m

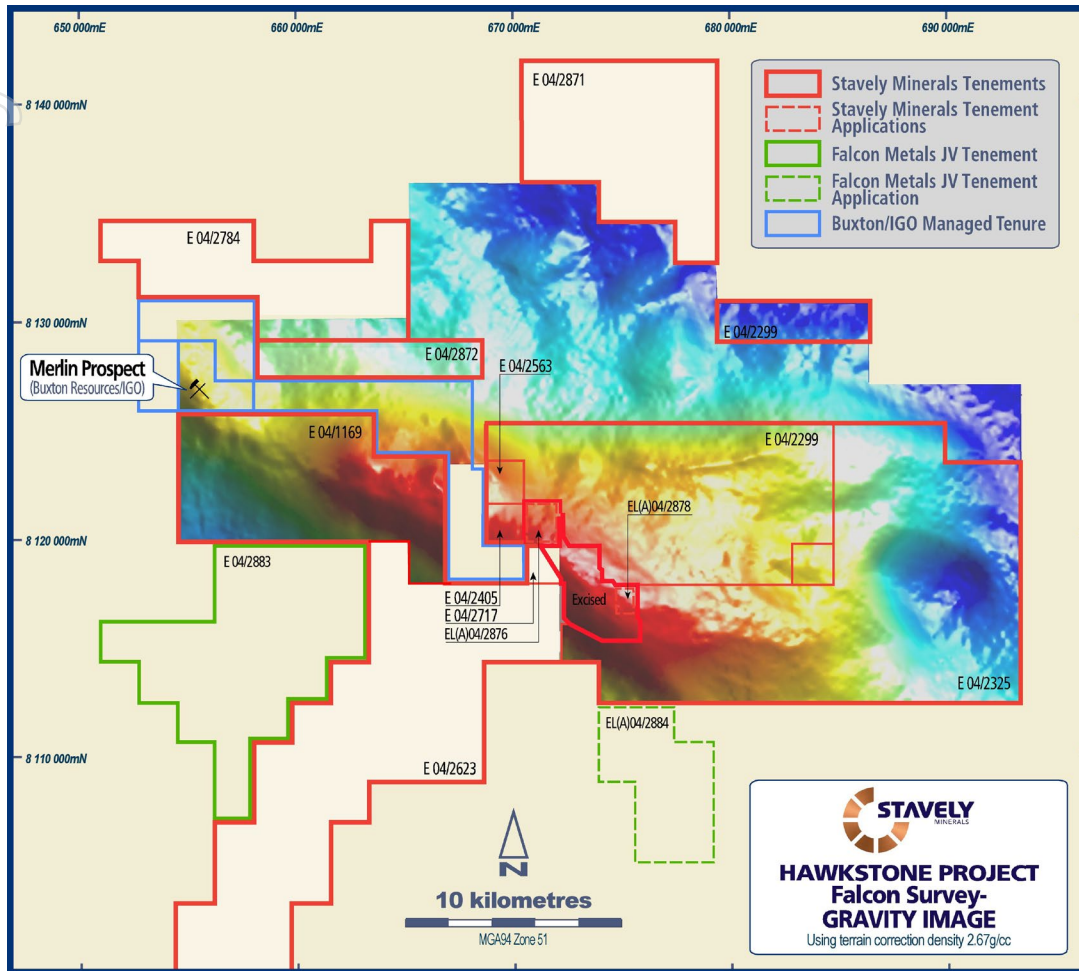
“The Dogleg Prospect recently discovered by IGO/BUX JV is considered...to be the most significant greenfields Ni discovery in Australia this decade.”

¹See ASX:BUX announcement 03/10/2023, 19/10/2023 and 6/11/2023

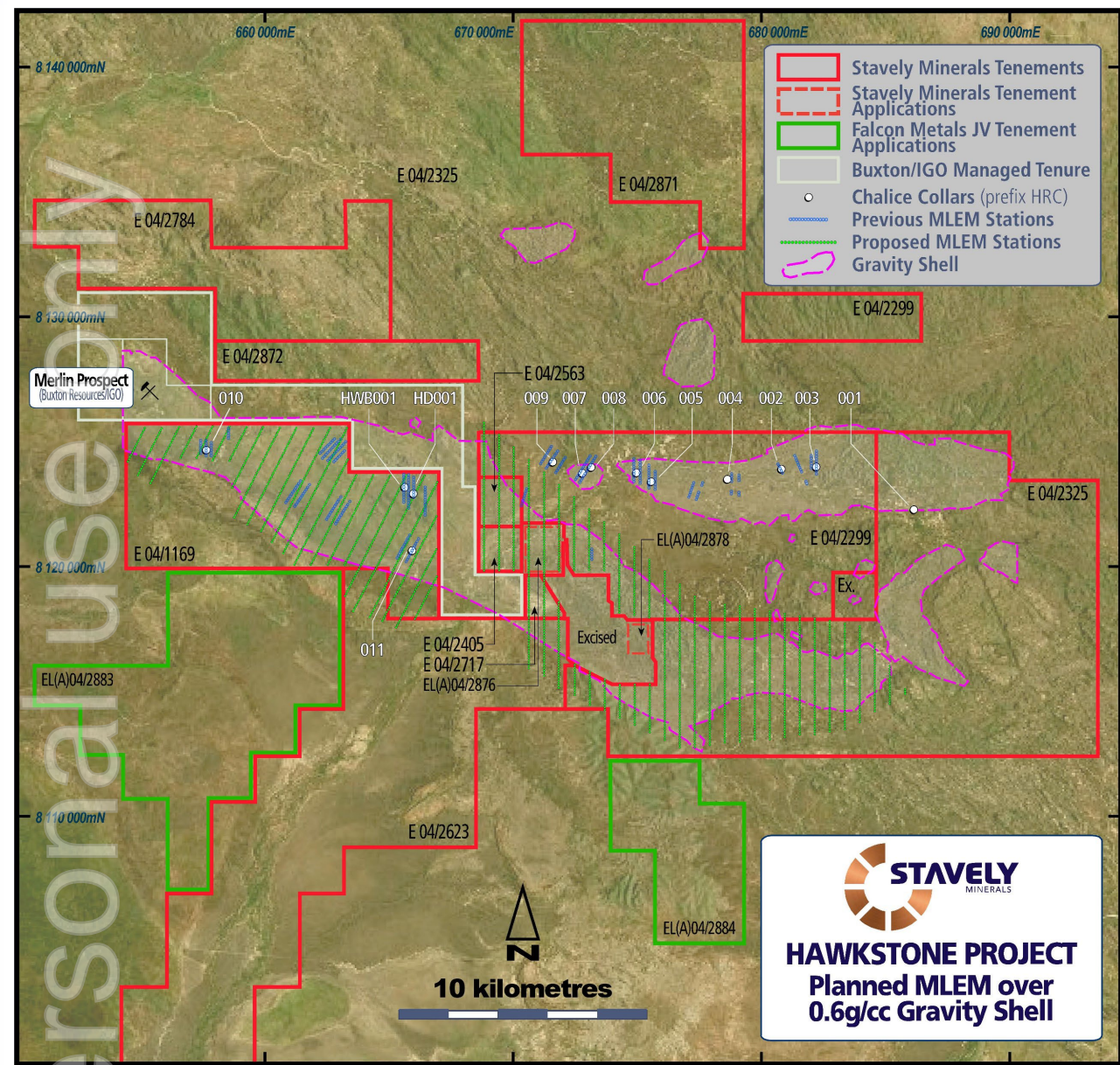


Hawkstone Ni-Cu-Co Project

- Stavely Minerals has flown the Falcon Gravity gradiometer and magnetic survey over the Hawkstone Project
- Gravity data shows an interpreted ~20km mafic / ultramafic magma chamber at depth
- Perfect host environment for a magmatic nickel sulphide deposit in a terrain with demonstrated high-tenor magmatic nickel sulphide endowment



See ASX announcement 5/10/2023

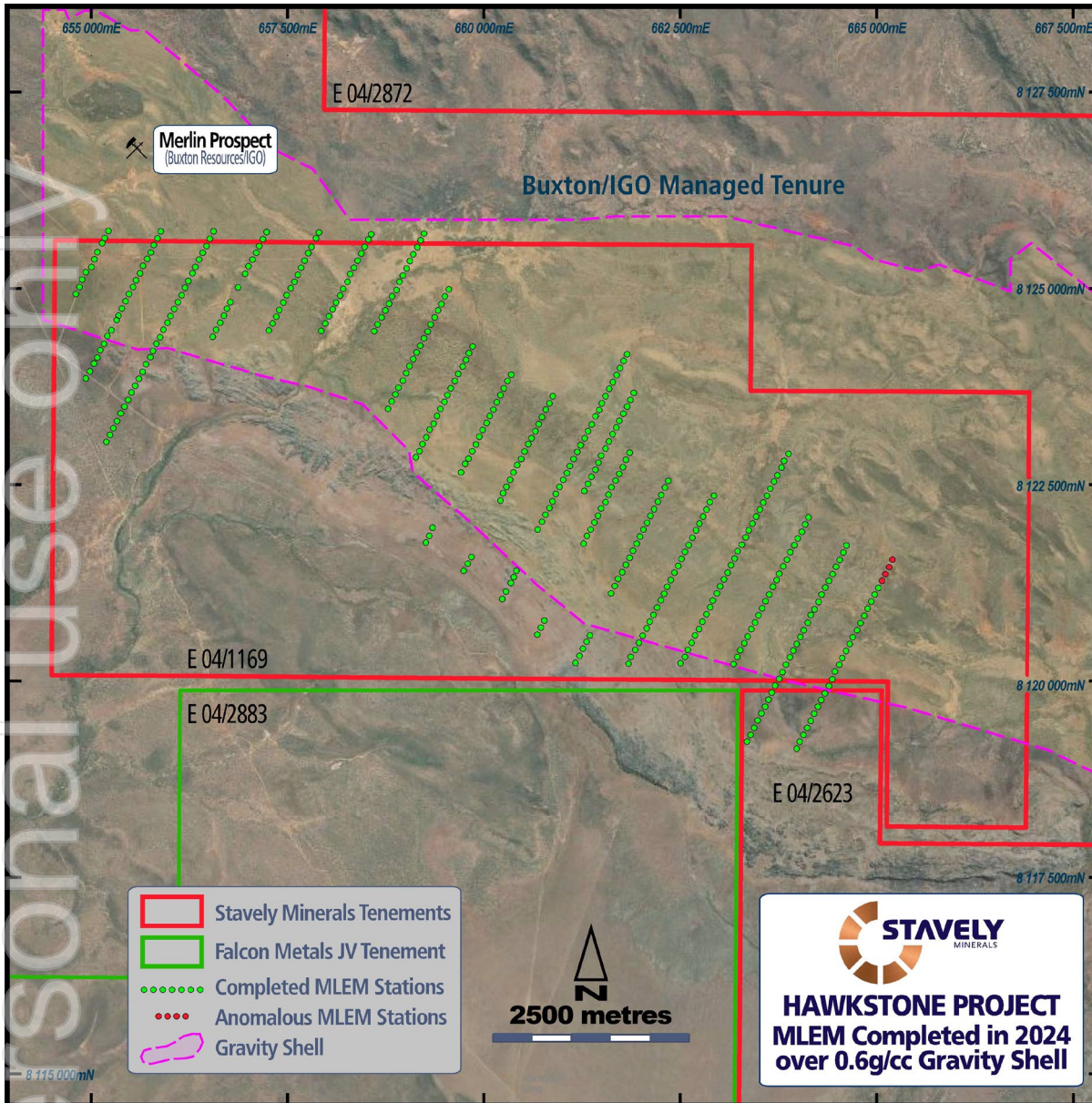


2024 field season complete¹

- large moving-loop EM (MLEM) survey WA EIS co-funding grant of up to **\$230,000²**
- RC drilling of shallow conductors to 200m
 - ❖ WA EIS co-funding grant of up to **\$170,000²**
- Deeper MLEM conductor to be tested with a deep diamond drill hole to 800m
 - WA EIS co-funding grant of up to **\$220,000^{1,3}** – effectively deferred to 2025 with a new grant

Hawkstone can be progressed to a decision to drill, and be drill tested with modest well-leveraged expenditure.

¹See ASX:SVY announcement 20 November 2024
²See ASX:SVY announcement 6 May 2024
³See ASX:SVY announcement 14 November 2023



2024 field season complete¹

- Drilled 4 RC drill holes
- Moving loop electro-magnetic (MLEM) surveying
 - 499 stations
 - 32 profiles (lines)
 - 43.5 line kilometres
 - **An emerging conductor located beyond the end of line 79300**
 - **To be followed-up in May 2025**
- 117 stream sediment geochemical samples taken
 - Analysed by low-level BLEG for gold
 - Also analysed for a 52-element suite plus gold
- 68 reconnaissance rock-chips taken
 - Analysed for 60 elements including REE plus gold

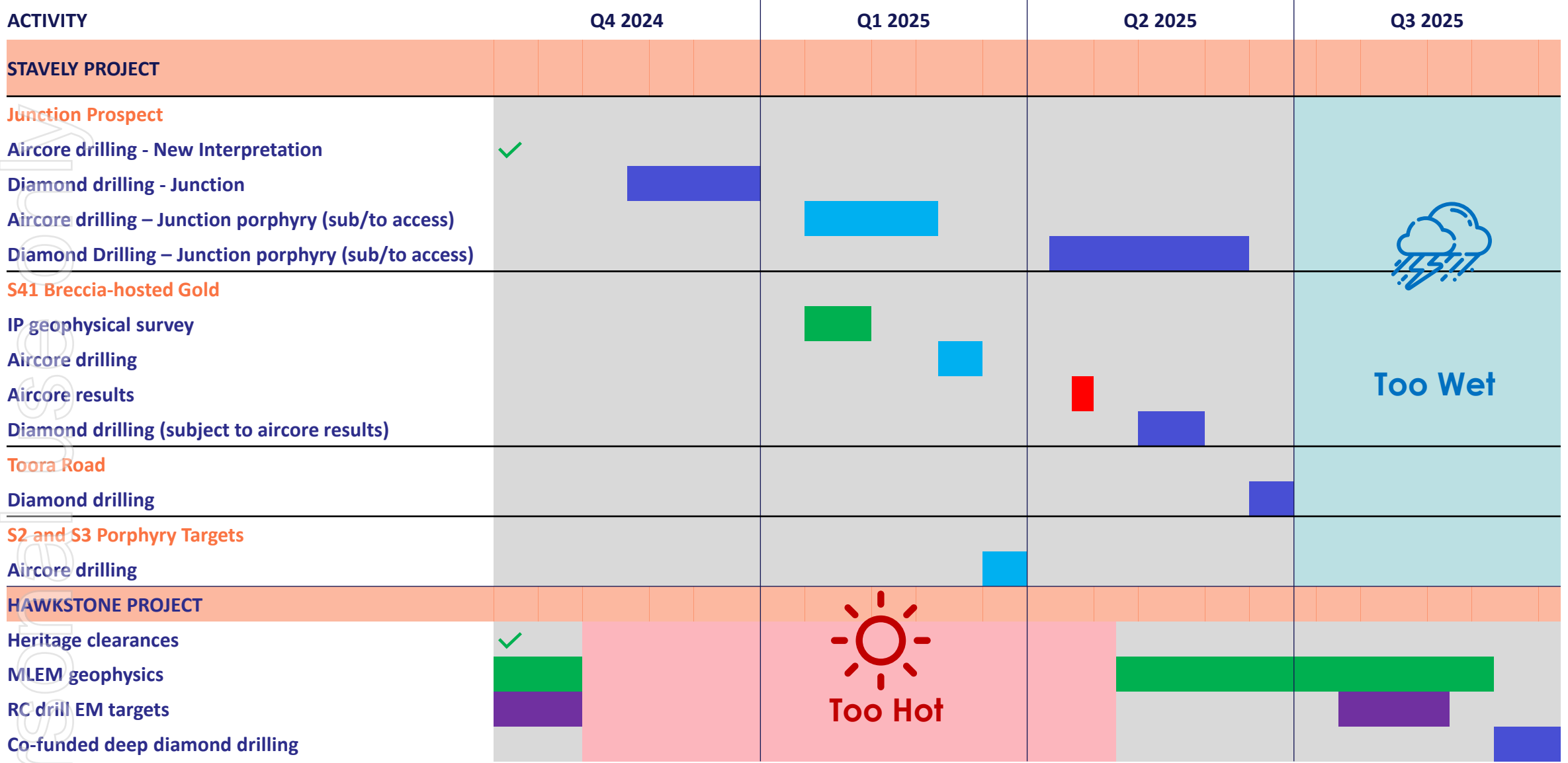
¹See ASX:SVY announcement 20 November 2024



Work Programme

ersonal use only

12-month Work Programme



Too Wet



Too Hot

Corporate Summary



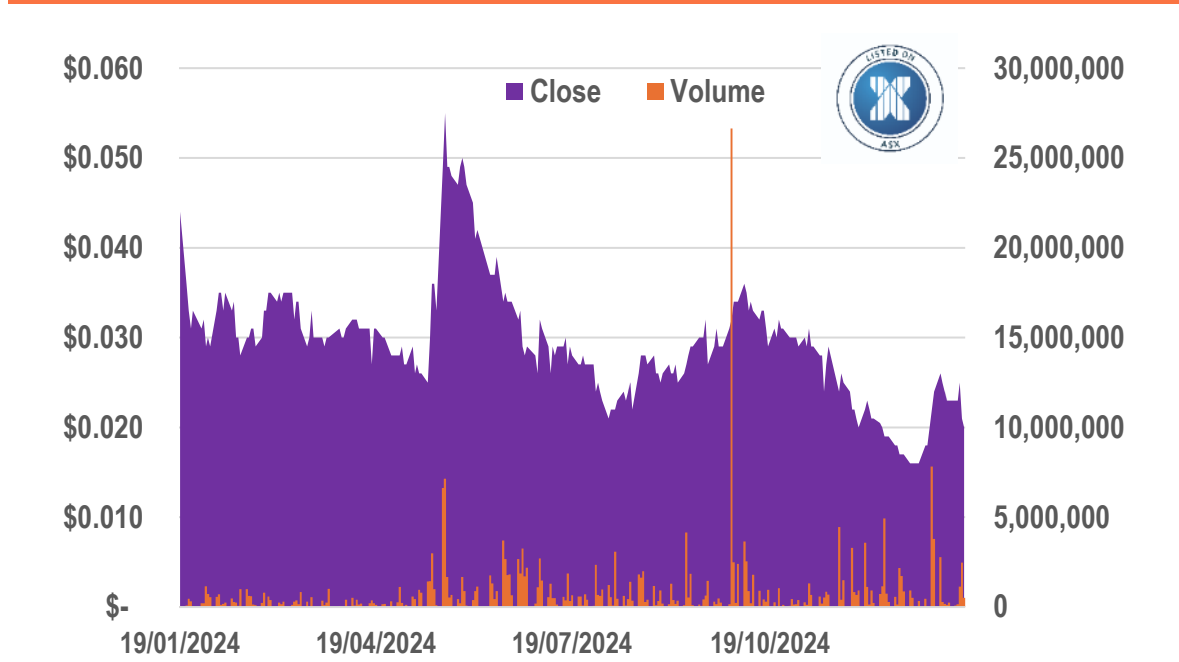
CAPITAL STRUCTURE

ASX Ticker	SVY
Share Price (22/01/25)	\$0.018
Shares on Issue	544M
Cash (30/09/24)	\$2.9M
Market Capitalisation	\$9.8M
Management and Staff	~10% equity

Directors

Chris Cairns	Executive Chair
Jennifer Murphy	Technical Director
Peter Ironside	Non-Executive Director
Amanda Sparks	Non-Executive Director & Company Secretary
Rob Dennis	Non-Executive Director

12-month Share Price to 17 January 2025



Summary – Key Investment Takeaways



- ✓ The Cayley Lode is a quality high-grade copper-gold-silver Mineral Resource from surface
- ✓ Junction copper (aircore drilling impressive assays) – **gaining access a priority**
- ✓ Junction porphyry target – only 200m east of Junction high-grade copper-silver
- ✓ S41 breccia-hosted gold opportunity – scale potential with only 1 diamond drill hole to date
- ✓ Markets have got it wrong on magmatic nickel sulphide
- ✓ Hawkstone Ni-Cu-Co Project provides an outstanding opportunity for discovery in an emerging high-tenor magmatic nickel sulphide province with demonstrated fertility
- ✓ BIG targets



Copper and Nickel ...the Ultimate “Future-Facing” Commodities



3.6 tonnes of copper for every MW of wind power



4-5 tonnes of copper for every MW of photo-voltaic solar power

In order to migrate to a **low-carbon economy** and provide **alternative energy solutions**, certain strategic minerals are required to build the wind farms, solar farms, electric vehicles and high-technology needed to facilitate this transition.

Copper and Nickel are some of the key metals required

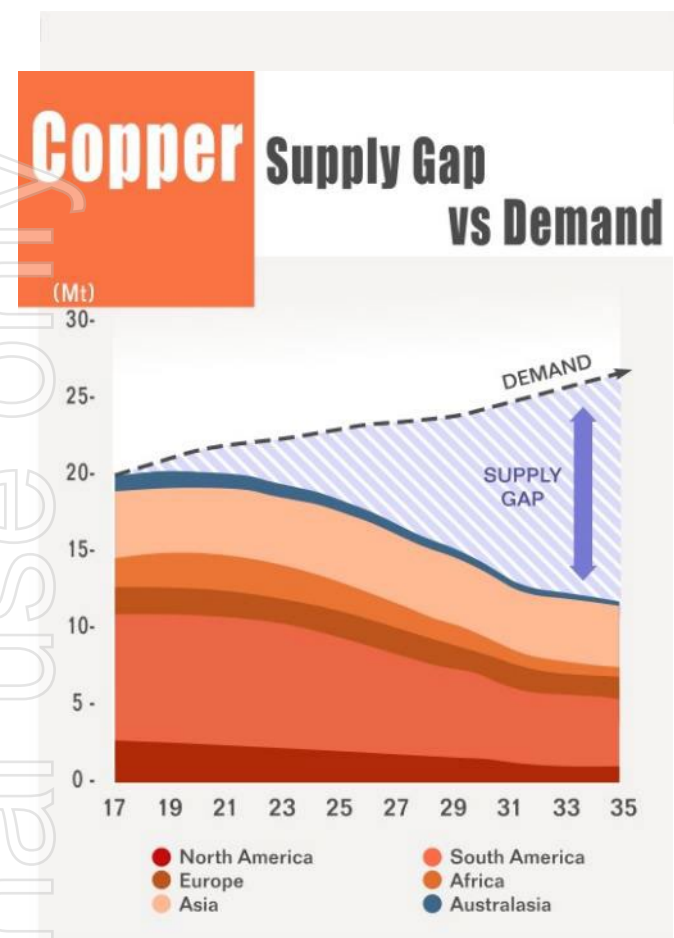


4 x more copper in an electric car than one with an internal combustion engine



6 types of bacteria killed by copper surfaces

Copper and Nickel...Compelling Market Fundamentals



CRU estimates a 15 million tonne copper supply deficit by 2035

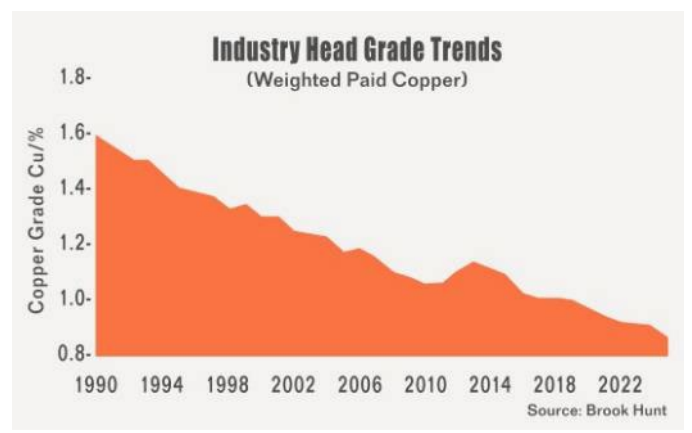
There are very few high-quality projects coming on stream in first world jurisdictions

Copper M&A
The Cupboard is Nearly Bare



Escondida, the world's largest copper mine:

- 1.72% Cu average head grade in 2007
- 0.52% Ore Reserve grade in 2019





STAVELEY
MINERALS

ASX Code: SVY

Contact Us:
Stavely Minerals Limited
Level 1, 168 Stirling Highway
Nedlands WA 6009
www.stavely.com.au
info@stavely.com.au
Ph: 08 9287 7630

The information in this presentation is extracted from information available to view on www.stavely.com.au. The Company confirms that it is not aware of any new information or data that materially affects the information included in the original market announcement and, in the case of estimates of Mineral Resources or Ore Reserves, that all material assumptions and technical parameters underpinning the estimates in the relevant market announcement continue to apply and have not materially changed. The Company confirms that the form and context in which the Competent Person's findings are presented have not been materially modified from the original market announcement.



STAVELY

MINERALS

ASX Code: SVY

Appendix 1: Mineral Resources

ersonal use only

Appendix 1: Mineral Resources Classifications



Table 1. Cayley Lode Initial Mineral Resource estimate

Resource Material	Resource Category	Cut-off	Tonnes (Mt)	Grade	Cont.	Grade	Cont.	Grade	Cont.
		(Cu %)		(Cu %)	Cu (Mlbs)	(Au g/t)	Au (oz)	(Ag g/t)	Ag (oz)
Primary Mineralisation (OP)	Indicated	0.2	5.87	1.04	134.4	0.23	43,407	7	1,321,074
	Inferred	0.2	1.7	1.3	49	0.2	10,931	9	491,907
Sub-Total Primary OP			7.6	1.1	183	0.2	54,338	7.4	1,808,158
Primary Mineralisation (UG)	Indicated	1.0	-	-	-	-	-	-	-
	Inferred	1.0	1.7	1.8	69	0.2	10,931	6	327,938
Sub-Total Primary UG			1.7	1.8	69	0.2	10,931	6	327,938
Total Cayley Lode			9.3	1.23	252	0.23	65,000	7.1	2,100,000



Table 4. Stavely Minerals Total Mineral Resources estimates

Resource Material	Resource Category	Cut-off	Tonnes (Mt)	Grade	Cont.	Grade	Cont.	Grade	Contained Metal	Grade	Cont.
		(Cu %)		(Cu %)	(Mlbs Cu)	(Au g/t)	(oz Au)	(Ag g/t)	(oz Ag)	(Zn %)	(kt Zn)
Total Resources	Indicated	1	21.5	0.61	288	0.1	67,301	3.1	2,153,972	0.3	8
	Inferred	1	6.8	1.2	175	0.1	32,797	4.7	1,043,839	0.2	16
Total Stavely Minerals			28.3	0.75*	463	0.11*	100,000	3.5	3,200,000	0.2	24



Cayley Lode bornite mineralisation - photo from ASX announcement 11 September 2019

¹ Reported in compliance with the JORC Code 2012, see ASX announcement 14 June 2022