



Additional Licence Granted in Namibia's Most Prolific Uranium Producing Region

Highlights

- EPL 9162 (**Swakopmund Project**) covering 125km² successfully granted following Environmental Clearance Certificate (**ECC**) approval
- Swakopmund is in close proximity to Orano's Trekkopje and Klein Trekkopje uranium deposits (340Mt @ 140ppm U₃O₈)¹
- Potential for calcrete hosted uranium deposits with prospective targets located in the central and south-eastern areas of the licence
- CML's exploration team have commenced exploration activities immediately through a horizontal-loop electromagnetic (**HLEM**) survey over areas of potential paleo-channel development

Connected Minerals Limited (**ASX: CML**) (**CML, Connect Minerals or the Company**) is pleased to announce that following the approval of an Environmental Clearance Certificate (**ECC**), it has successfully been granted the Exclusive Prospecting Licence (**EPL**) for its Swakopmund Project (EPL 9162), which is strategically located in Namibia's most prolific uranium producing region.

Connected Managing Director and CEO Mr Warrick Clent said, "We are excited to be able to report that the Swakopmund licence has been successfully granted to CML, within the timeframes set out prior to our readmission to the ASX. We will have our exploration team on the ground at Swakopmund immediately as we continue to progress aggressive exploration of our Namibian uranium licences."

"Swakopmund is now our second exploration licence in Namibia, joining Etango North-East, where the team is eagerly awaiting the results of our expanded maiden sampling programme, following the confirmation of high-grade uranium mineralisation in November 2024."

¹ Mining Technology website referenced 31/07/2024 quoting undated/unconfirmed reserves - <https://www.mining-technology.com/projects/trekkopje-mine/?cf-view>



For personal use only

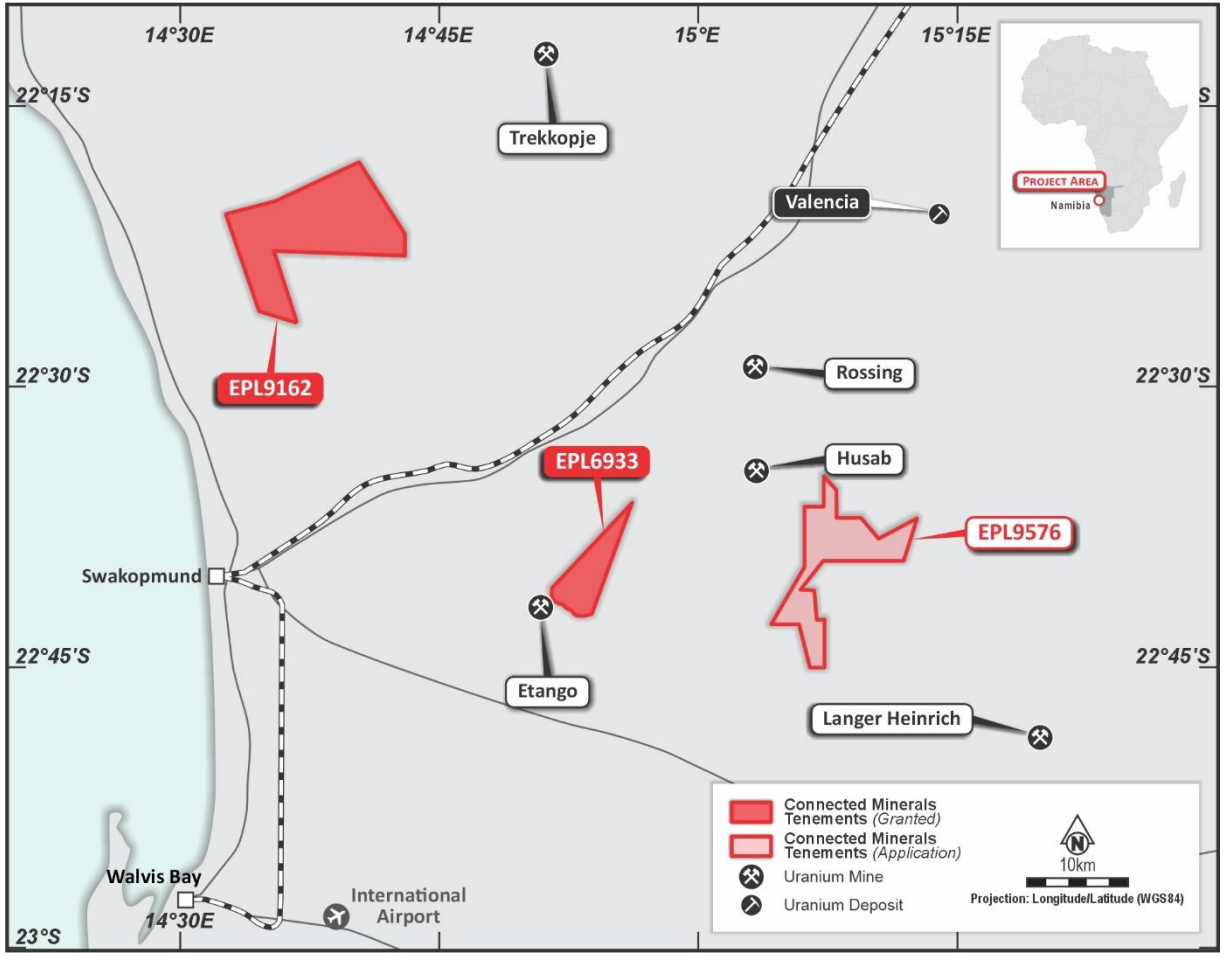


Figure 1. Location map of Connected Minerals' Namibian assets.

The Swakopmund Project covers 125km², located along trend to Orano's Trekkopje and Klein Trekkopje deposits, which boast 340Mt @ 140ppm U₃O₈¹.

Swakopmund demonstrates the potential for calcrete hosted uranium deposits within paleo-channels running off nearby "hot" granites. Connected has identified a series of prospective targets located in the central and south-eastern areas of the licence.

It is the Company's belief that Swakopmund has the potential to host low-grade, high-tonnage uranium deposits.

Connected's exploration team have mobilised immediately to commence exploration activities to identify areas of potential paleo-channel development, through a horizontal-loop electromagnetic (HLEM) survey, across zones previously flagged through remote sensing and on-ground reconnaissance.

Results of the HLEM survey will be reported to the market as soon as possible once the report has been received.

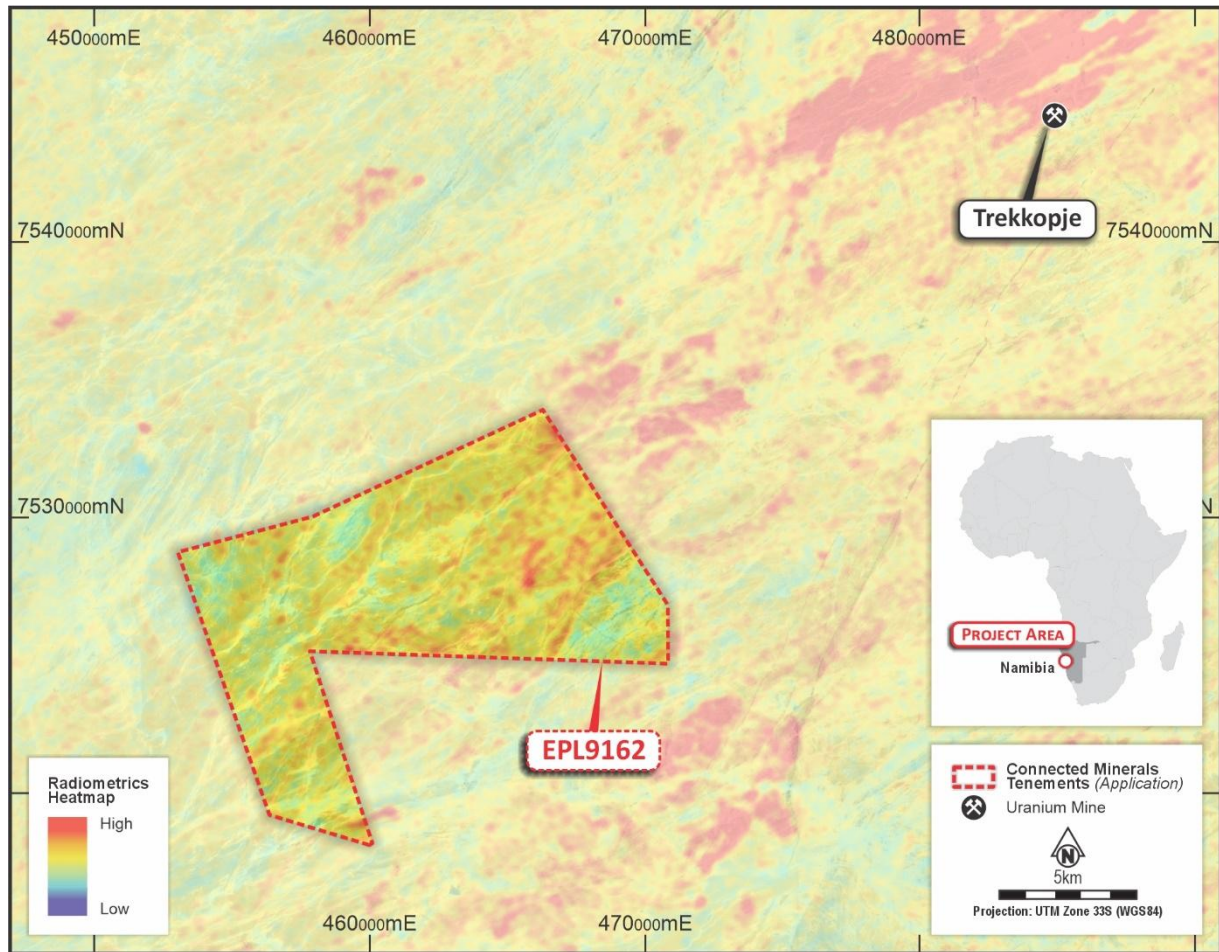


Figure 2. EPL9162 Uranium Channel Radiometrics.

This announcement has been authorised for release by the Board of Directors.

For further information, please contact:

Warrick Clent
Managing Director
+61 8 6211 5099

info@connectedminerals.com.au

Ben Creagh
NWR Communications
+61 (0) 417 464 233

benc@nwrcommunications.com.au

About Connected Minerals Limited

Connected Minerals Limited (ASX: CML) is an Australian-headquartered company which has commenced a new strategic direction focused on the exploration and potential development of a portfolio of projects in Namibia and Western Australia. The Company is targeting uranium discoveries through two granted exclusive prospecting licences (EPL) and one EPL application in the most prolific uranium producing province in Namibia. Connected Minerals has also acquired 100% of the legal and beneficial ownership in three granted exploration licences in Western Australia which demonstrate multi-commodity potential.