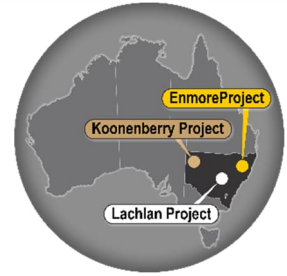


ASX ANNOUNCEMENT
11 February 2025

Koonenberry commences drilling at Enmore Gold Project, NSW



HIGHLIGHTS

Following Koonenberry Gold’s acquisition of gold and copper-gold projects across NSW¹, it has commenced an inaugural drilling program at the Enmore Gold Project in northeast New South Wales:

- A detailed technical review has confirmed orogenic gold potential at Enmore, with multiple targets identified across the district. The Sunnyside Prospect has been prioritised for immediate drill testing, where 5-7 holes are planned for ~2,000m.
- Enmore is **20km south of Larvotto Resources’ (ASX: LRV) 1.7Moz Hillgrove Gold-Antimony Mine**²
- Drilling will target **broad zones of gold mineralisation** previously intersected, including **174m @ 1.83g/t Au and 3m @ 8.86g/t Au from 172m to EOH (OSSRC006)**.¹
- **Importantly, the majority of the deeper historic drillholes ended in mineralisation, with mineralisation therefore open along strike, across strike to the NW, down dip and up dip.**
- KNB will complete additional exploration activities including soil sampling concurrently with the drill program to bring other high-grade district targets to **drill-ready status**.
- **Koonenberry is the first company to follow up these results since these holes were drilled.**

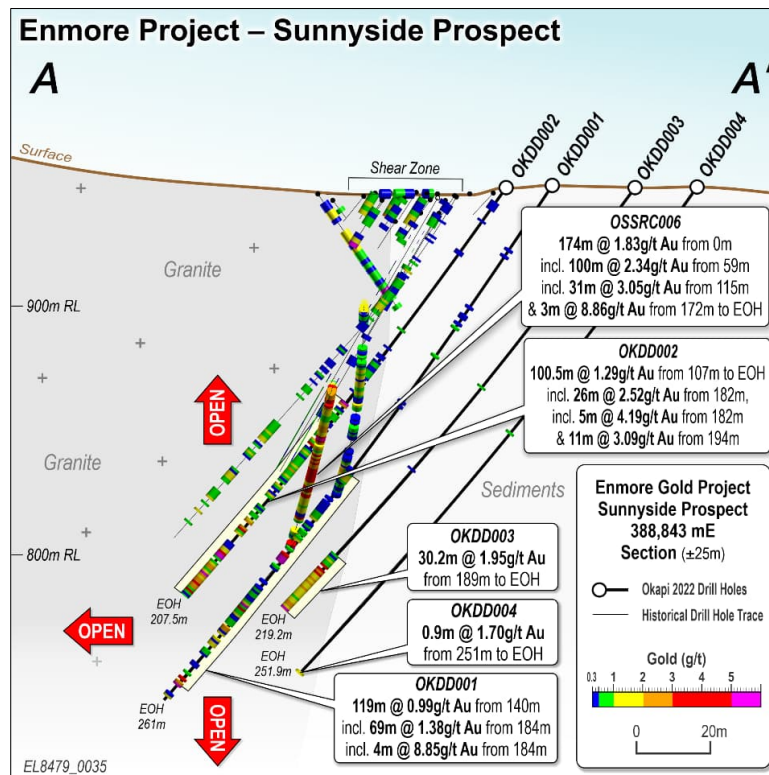


Figure 1. Sunnyside section viewed toward 070 along the ESE-WSE shear zone.

Managing Director, Dan Power, commented: “We are excited to kick off our drilling program at Sunnyside. Company geologists have been working diligently since the acquisition was completed in December to ensure drill targeting and NSW Regulator approvals were received in accordance with our planned timeline.

“This drill campaign will aim to test some exceptional historical drill hits which demonstrate potential for bulk tonnage as well as high-grade gold mineralisation such as that seen at Hillgrove, 20km away.”

¹ Refer ASX Announcement (ASX:KNB) dated 17/10/2024

² ASX: LRV 05/08/2024

For personal use only

DIAMOND DRILL PROGRAM UNDERWAY

Koonenberry has commenced a diamond drilling program of 5-7 holes for approximately 2,000m to test the advanced Sunnyside Prospect at the recently acquired Enmore Project in northeastern New South Wales. The program aims to expand the existing gold mineralisation footprint, with significant intercepts open along strike, across strike as well as up and down dip. Additionally, drilling will investigate an interpreted NNW-SSE structural orientation thought to control higher-grade gold mineralisation which prior drilling has not optimally tested. Exploration at the Sunnyside Prospect in 2021-22 by GUE/Okapi Resources returned a series of significant gold intersections including³:

- **174m @ 1.83g/t Au inc. 100m @ 2.34g/t Au; inc. 31m @ 3.05g/t Au** from 115m and **3m @ 8.86g/t** from 172m to EOH (OSSRC006)
- **119m @ 0.99g/t Au** from 140m inc. **69m @ 1.38g/t Au** from 184m (OKDD001)
- **100.5m @ 1.29g/t Au** from 107m to EOH (OKDD002)
- **30.2m @ 1.95g/t Au** from 189m to EOH (OKDD003)

SUNNYSIDE PROSPECT

The Sunnyside Prospect occurs along the Sunnyside fault, which is associated with the development of a penetrative, strongly foliated, mylonitic texture at the contact between the porphyritic biotite monzogranite to the north and sedimentary rocks of the Girrakool Beds to the south. Deformation of the monzogranite has been at biotite grade metamorphic conditions. The prospect has seen a modest amount of near-surface historical exploration, with deeper drilling only conducted in recent years which resulted in the discovery of significant gold mineralisation over significant widths. Gold mineralisation is contained within the NE-SW trending shear zone and in later quartz-stage veins, which cross-cut the shear zone at a high angle trending to the NW. Gold mineralisation has a strong arsenic association with arsenopyrite, pyrite and pyrrhotite observed along with traces of galena, chalcopyrite and sphalerite.

Drilling shows that the mineralisation extends from the major structure for at least 50m to 100m, over a strike length of approximately 450m and to a depth of about 250m. Gold mineralisation remains open in multiple directions, with indications that grade may be increasing with depth.

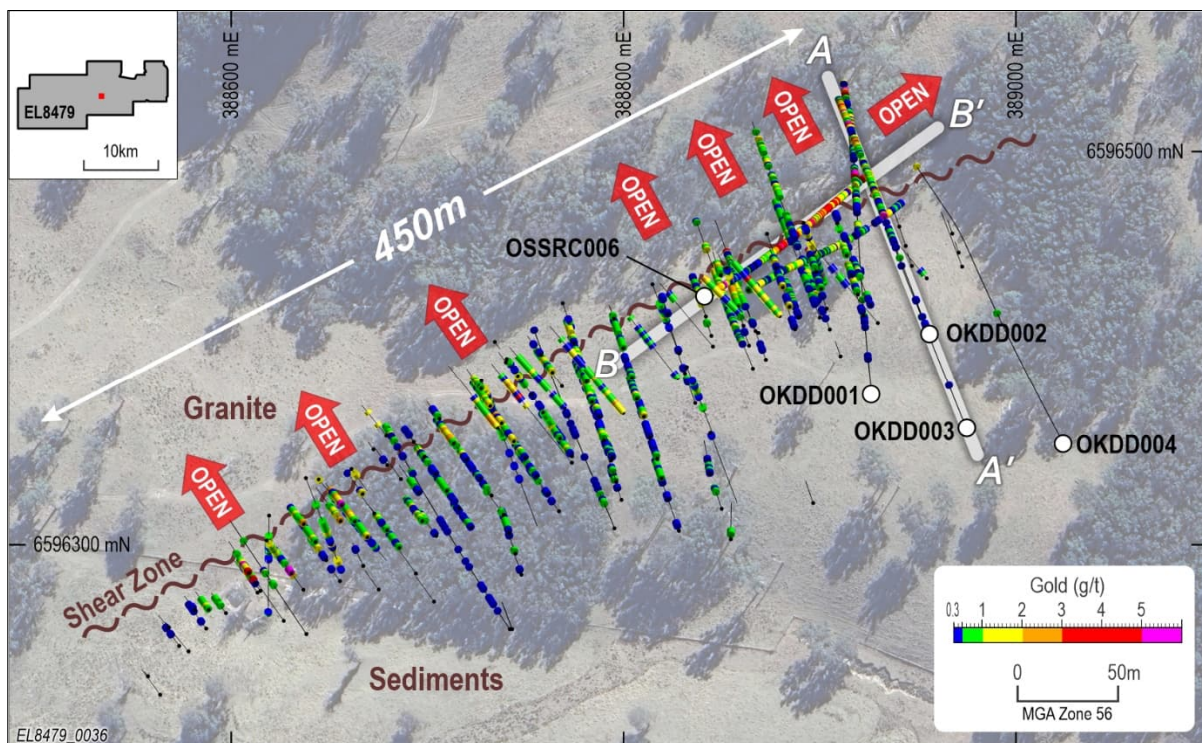


Figure 2. Sunnyside Prospect plan view with drillholes targeting the shear zone contact between granite & sediments. Mineralisation occurs both along the shear and at high angles to the shear.

³ Refer ASX Announcement (ASX:KNB) dated 17/10/2024

For personal use only

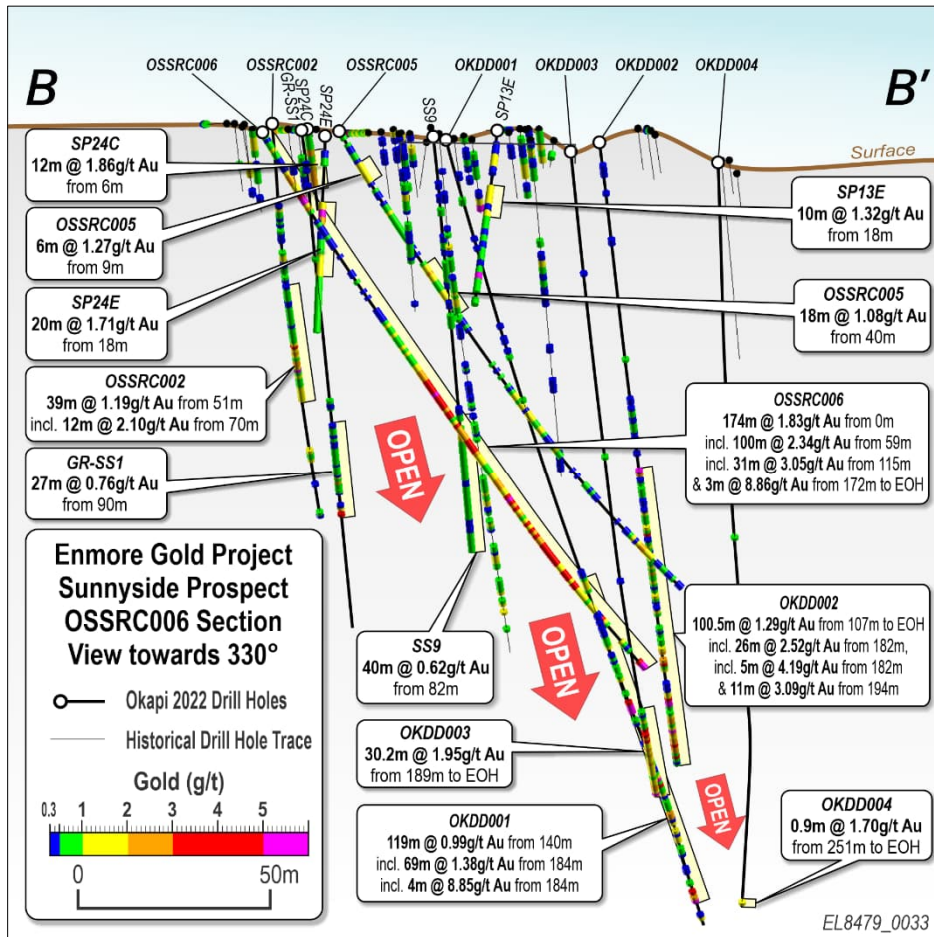


Figure 2. Sunnyside section viewed toward 330 in the plane of OSSRC006.

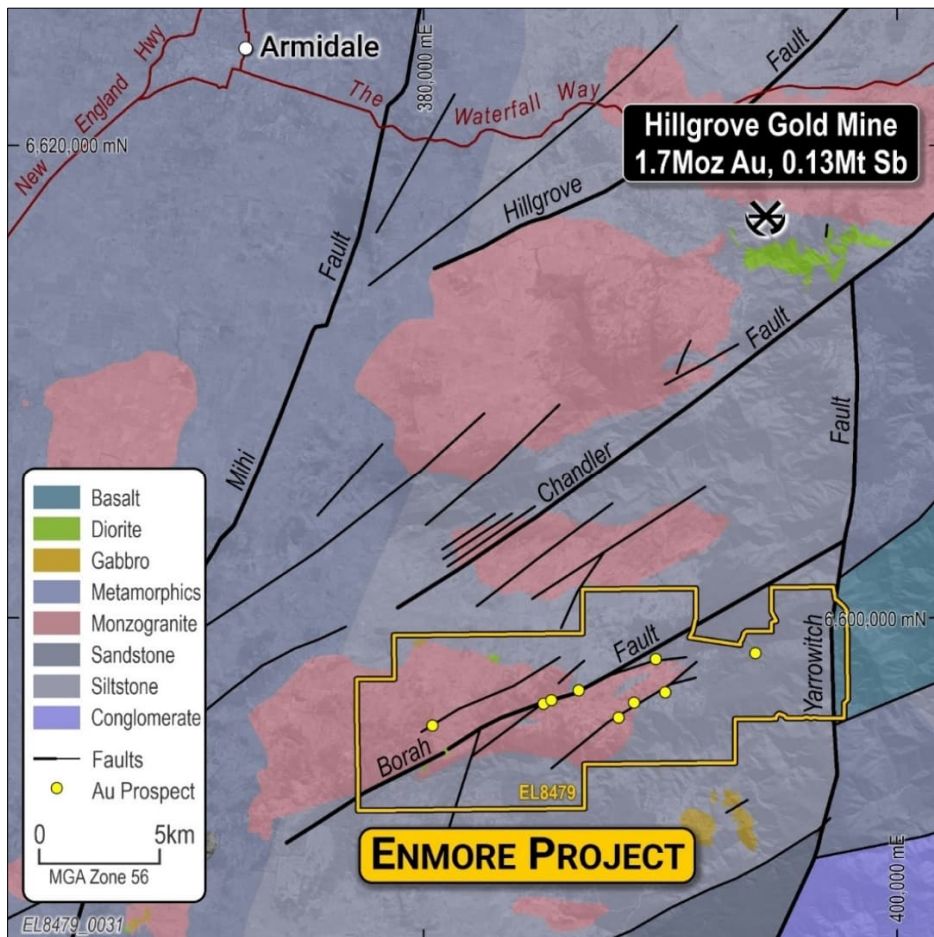


Figure 3. Regional Geology at the Enmore Project in relation to the Hillgrove Mine.

ENMORE GOLD PROJECT – GEOLOGY & MINERALISATION

The project area lies within a north-east trending zone of Permo-Carboniferous (302Ma) granitoid plutons (Monzogranite) occurring en-echelon hosted within Carboniferous greenschist facies Girkakool metasediments. The area is transected by major, north-east trending faults, which dissect and locally fault-bound the plutons.

Gold mineralisation at Enmore is orogenic mesothermal in character and is structurally controlled largely within mylonite zones associated with NE-trending faults (such as the Sheba, Borah and Sunnyside faults). Gold occurs in intensely sheared and altered Monzogranite and sediments as well as in discrete quartz veins or zones of quartz veins in both igneous and sedimentary hosts. Sheared zones within the granites can extend 10's of metres into the hangingwall and footwall positions providing significant vertical permeability for the ascent of mineralising fluids. Flexures of up to 20 degrees in the strike of regional faults are often associated with higher concentrations of gold mineralisation, including at the Sunnyside Prospect.

Mineralisation occurs as silicified breccias, quartz stockworks, sulphidic fractures and narrow quartz veins hosted within the granitoid and metasediments and appears to be long-lived and multi staged. An early gold event is associated with strong shearing, pervasive silicification and sulphides emplaced along the ENE-WSW trending fault zones and tends to be relatively lower grade. A second overprinting gold event has introduced gold in quartz veins developed within en-echelon fracture zones which are tangential or oblique to the main structures trending. Gold occurrences associated with the later event generally have a higher proportion of free gold and significantly higher gold grades than the lode style structures. These tangential fracture zones are known to occur at Borah and at Sunnyside but can also be identified in soil geochemical patterns. This structural setting and paragenesis is similar to the Hillgrove deposit where the main mineralisation is hosted within a conjugate vein array between the Hillgrove and Chandler fault system rather than within the main shear array.⁴ For the most part, drilling at Enmore has been conducted orthogonal to the main shear zones rather than targeting high-grade shoots oblique to those structures. It is therefore likely that drilling has missed the high-grade shoots.

Discrete mineralised zones are generally defined by intense alteration including a mineral assemblage of quartz (crystalline and chalcedonic), sericite, carbonate (siderite), potassium feldspar, free gold, pyrite and minor arsenopyrite and local concentrations of pyrrhotite and traces of chalcopyrite, sphalerite and tetrahedrite.

The gold is usually associated with pyrite and arsenopyrite, arsenic assays being generally highest with high gold values, but it is unclear how much gold is in solid solution in arsenopyrite or arsenic pyrite. Other sulphides were not common in drill-holes and core intervals that assayed >1 g/t exhibited very low base metals and even low Sb, although antimony is quite anomalous in surface soil samples. Previous reports mention some ore shoots contain stibnite, chalcopyrite and galena.

Other intrusive igneous rocks thought to be genetically related to the Enmore gold mineralisation include lamprophyre dykes which occur proximal to ore-bearing structures at the Lone Hand Prospect (analogous to the nearby Hillgrove mine). Also similar to Hillgrove, a diorite intrusion also occurs at Enmore on the SE slopes of Mt Borah).

It is postulated that gold was not introduced during the Permo-Carboniferous period associated with the emplacement of the Enmore/Hillgrove batholiths, rather a later Permian event which produced the ENE-WSW faulting along the Monzogranite contacts during NW-SE compression. Transition from a ductile to brittle regime would have occurred in the late Permian (268-256Ma) which saw up to 12km of uplift in the New England Fold Belt during large scale oroclinal bending and tilting of crustal blocks.⁵

⁴ Downes, P. M., 2017

⁵ Banks, M., 2010

ENMORE GOLD PROJECT – DISTRICT PROSPECTS

The project contains 39 known hard rock gold mines and a substantial number of alluvial workings located along approximately 30km of prospective major structures. The majority of these remain untested with drilling or modern geophysics, however historical work has delineated several key areas including Sunnyside, Lone Hand, Borah, Queen of Sheba, Ben Evis, Sherwood and Hand in Hand. These Prospects are outlined below.

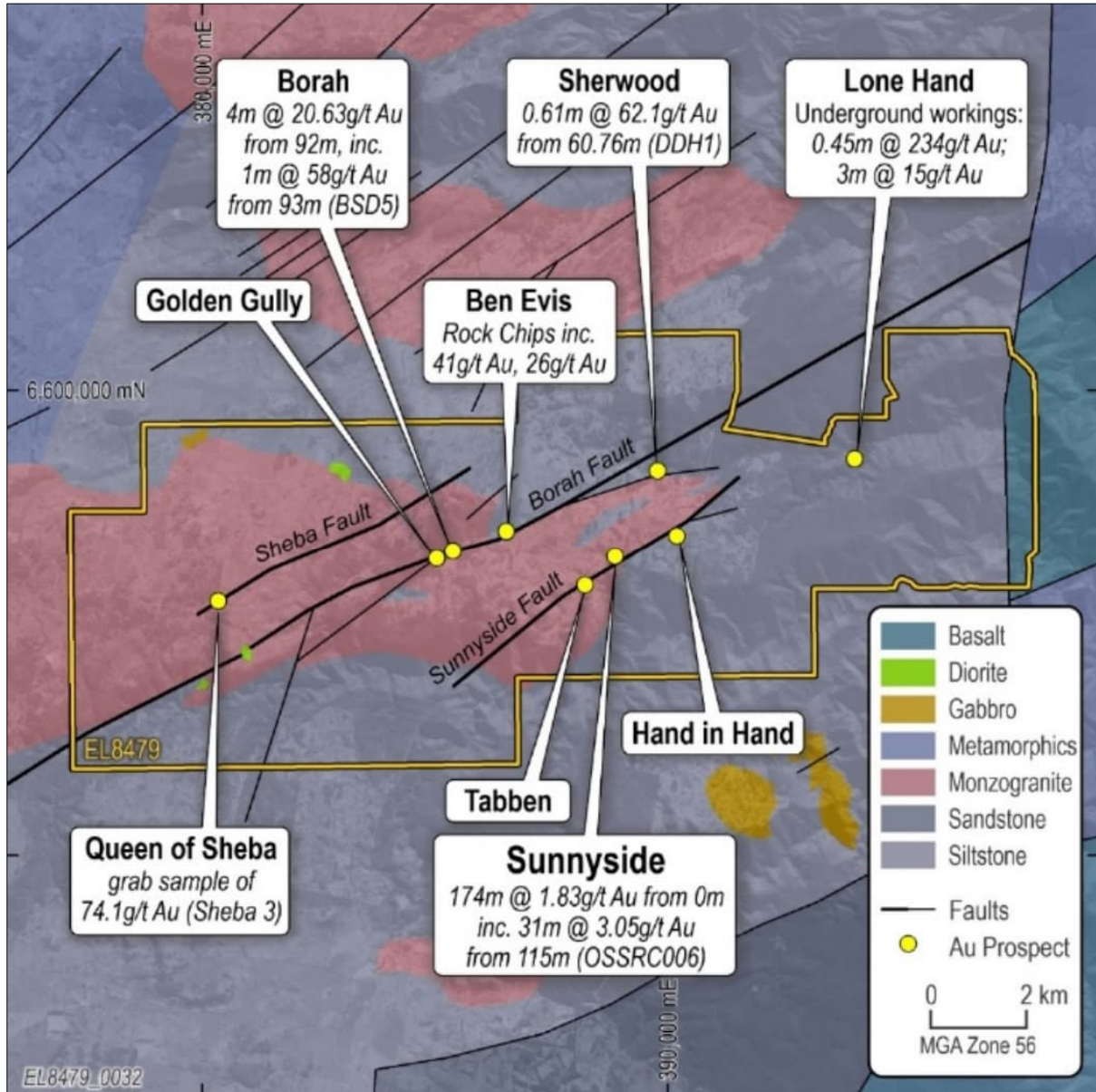


Figure 4. Sunnyside Prospect in relation to other Prospects within the Enmore Project.
Refer ASX announcement 17 October 2024 for prior drill and sample results.

For personal use only



Lone Hand Gold Prospect

The Lone Hand Au Prospect occurs as a series of extensive underground workings developed within the Giralakool metasediments on a possible extension or splay of the ENE trending Sunnyside Fault. The area is interpreted to overlie the ENE plunging blind extension of the roof zone of the Enmore Monzogranite.

Historic sampling of underground workings (Historic grade of 23g/t Au over a lode width of 0.76m reported) and trenches produced significant, narrow, high grade gold results, including:

- **0.45m @ 234g/t Au, 0.91m @ 21g/t Au, 0.76m @ 23g/t Au, 0.45m @ 33g/t Au, 1.52m @ 16g/t Au, 3m @ 15g/t Au, 0.38m @ 10g/t Au & 0.45m @ 13g/t Au⁶**

Additionally, a number of historic surface rock chip samples were collected, showing significant results including **56g/t Au and 36g/t Au⁶**

First pass reconnaissance diamond drilling of the Lone Hand prospect was completed in 2006, with only two holes completed beneath the historic workings (GR-LH1 for 87.6m & GR-LH2 for 144.3m). A single intersection of **0.8m @ 0.68g/t Au** from 90.75m was reported for GR-LH2 (Table 5), with the vast majority of the workings remaining untested.

Geologically, mineralisation is hosted in quartz veins within the shear zone and is associated with with strong phyllic alteration (not intersected in drilling above) and arsenopyrite as well as coarse free gold grains within silicified zones. Lamprophyric dykes also intrude the host sediments along parallel structures (petrographically determined as intermediate type between vogesite and spessartite). Lamprophyre dykes commonly occur in the same tectonic setting as orogenic gold deposits and in many cases are spatially associated with the mineralised gold-bearing structures, including at Hillgrove mine.

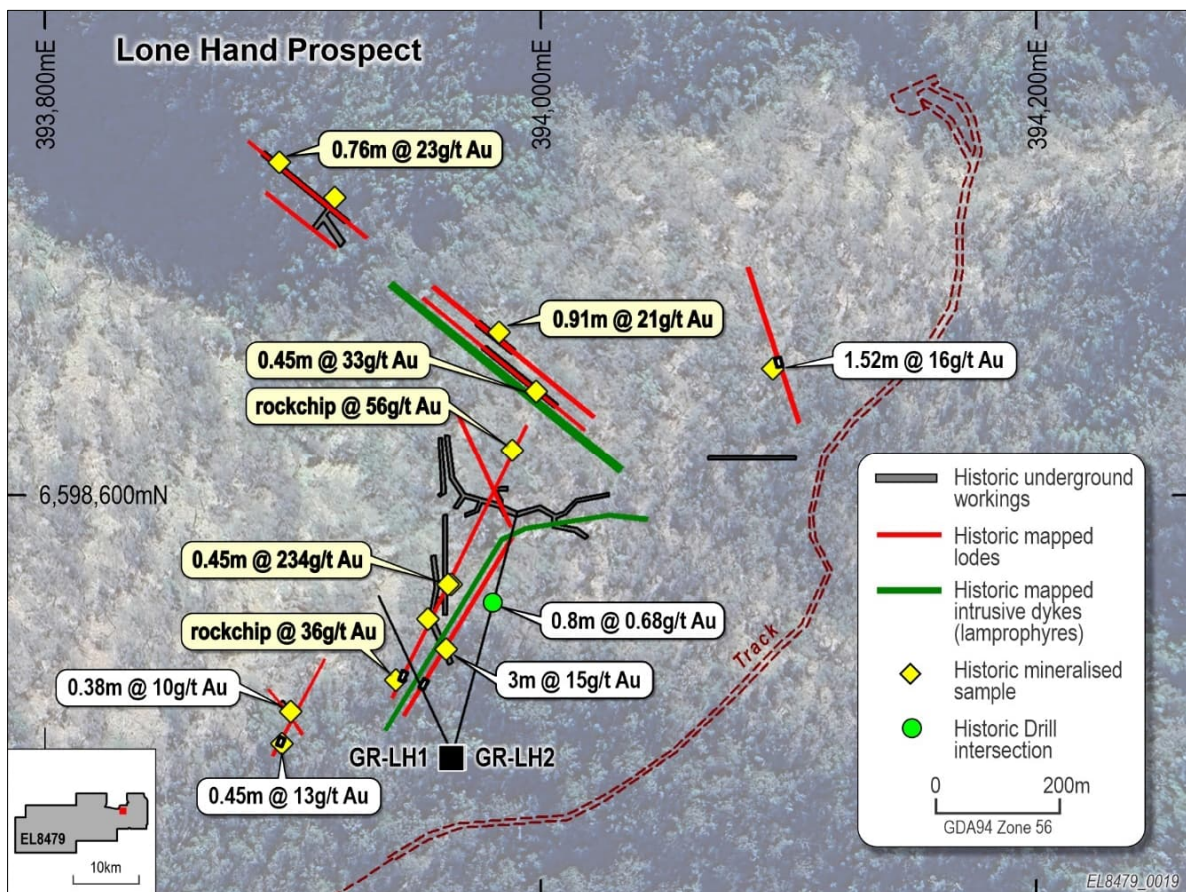


Figure 5. Lone Hand Prospect showing historical workings, high-grade gold samples and intrusive dykes (lamprophyres).

⁶ Refer ASX Announcement (ASX:KNB) dated 17/10/2024

Borah Gold Prospect

The Borah Prospect consists of a series of historic underground workings developed within the Enmore Monzogranite along the ENE striking Borah Fault, presenting an advanced drill ready target.

The Borah Fault is expressed as a 100m-wide silicified mylonite zone with extensive alteration characterised by siderite, sericite, kaolinite, pyrite and arsenopyrite. The alteration zone envelops NNE trending silicic stockworks which host the higher-grade mineralisation and are marked by more intensive fracturing and brecciation, locally resulting in destruction of the mylonite texture.

Historic underground sampling has shown narrow Au mineralisation related to brecciation and veining within the host Monzogranite, with highlight results including:

- **4m @ 2.22g/t Au, 7.25m @ 2.5g/t Au, 7m @ 4.6g/t Au & 1m @ 2.63g/t Au** (Table 8).

3D modelling of historic drill intersections highlights a drilled strike extent of >100m, including significant high-grade intersections (Table 5) such as:

- **13m @ 7.10g/t Au** from 85m, inc. **4m @ 20.63g/t Au**, incl. **1m @ 58.0g/t Au** (BSD5)
- **37m @ 1.39g/t Au** from 65m, inc. **6m @ 4.61g/t Au** (BSD1)
- **15.3m @ 3.26g/t Au** from 90.7m, inc. **3.8m @ 7.32g/t Au** from 90.7m inc. **1m @ 11.7g/t Au** from 90.7m & **3m @ 5.22g/t Au** from 102m (GR-B8)
- **22m @ 1.73g/t Au** from 100m, inc. **8m @ 3.21g/t Au** from 104m (BSP3)
- **2m @ 5.48g/t Au** from 144.62m (GR-B1)
- **4.23m @ 2.87 g/t Au** from 166.12m, inc. **0.25m @ 23.8g/t Au** from 168.4m (GR-B3)

In addition to Borah presenting a drill-ready target, regional extensions have been identified through a review of the soil geochemical datasets available; indicating a series of compelling undrilled gold lode extensions offset to the NNE and SSW of the main Borah lode. The Company aims to further review these extensions as well as plan follow-up drill testing.



Photo 1. Borah drill core **0.25m @ 23.8g/t Au** from 168.4m in GR-B3 showing silica-arsenopyrite flooded and fractured hydrothermal breccia.

Queen of Sheba Gold Prospect

High-grade gold mineralisation exploited by numerous historic workings and shafts at the Queen of Sheba Prospect are hosted within the Enmore Monzogranite along a NW-SE trending structure termed the Sheeba Fault. This orientation is normal to the dominant regional fault direction and mylonitic granite.

The Queen of Sheba Au Prospect represents a significant high-grade gold system associated sericite-silica altered Monzogranite, with thin veinlets (<1cm) of fine grained arsenopyrite running perpendicular to the regional structural trend.

The prospect recorded a historic production grade of 34.5g/t Au with rock chip samples returning results of **up to 74.1g/t Au**⁷. Limited historic drilling beneath gold workings has returned high grade intersections including:

- **0.6m @ 7.75g/t Au** from 41.46m (GR-SB2)⁶.

A review of historic soil geochemical sampling conducted across the Queen of Sheba Au Prospect on a 25m x 25m grid has defined a coherent, high tenor approx. 900m x 300m gold in soil anomaly centred on the historic gold workings. The high-grade zone of the gold in soil anomaly is greater than 700m in length, with a maximum value of 3,430ppb Au⁶. These high tenor soil gold anomalies remain undrilled, representing compelling walk-up drill targets for possible 'bonanza' grade mineralisation. The Company will undertake further field investigation of these areas prior to drill planning.

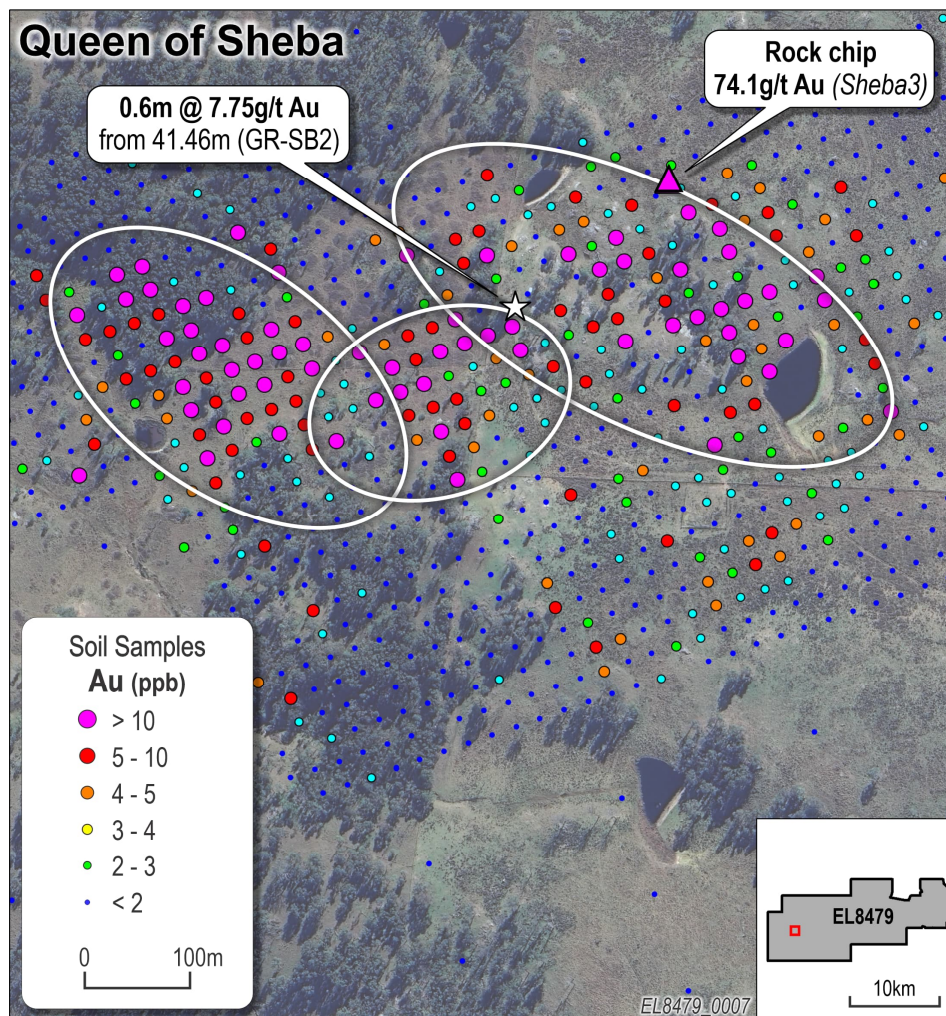


Figure 6. Gold soil targets >700m cumulative strike returned up to 3,430ppb Au in soil and 74.1g/t Au in rock chips.

⁷ Refer ASX Announcement (ASX:KNB) dated 17/10/2024

Ben Evis Gold Prospect

The Ben Evis Au Prospect occurs as an ENE trending line of historic pits and shafts situated within the Enmore Monzogranite close to the ENE trending Borah fault in a mylonite zone. Previous explorers have identified high grade gold in rock chips taken from mullock heaps which included:

- **41g/t Au, 26g/t Au**
- **9.2g/t Au**
- **6.2g/t Au**
- **2.36 g/t Au** (Table 7)

In addition to the highly anomalous gold results, weakly elevated values for As, Pb and Sb are observed, with maximum results of 170ppm, 224ppm and 24ppm respectively.

15 shallow historic percussion drill holes were completed beneath the main workings at Ben Evis and at nearby alluvial workings, to a maximum depth of 65m (most holes approximately 30m deep) which returned significant intersections (Table 5) including:

- **12m @ 0.63g/t Au** from 6m (**incl. 2m @ 2.71g/t Au** from 12m) in BAP1G
- **2m @ 4.29g/t Au** from 14m & **4m @ 0.69g/t** from 22m in BP3B
- **2m @ 0.52g/t Au** from 26m in BP1B
- **4m @ 0.64g/t Au** from 40m (**incl. 2m @ 0.86g/t Au** from 42m) in BP2A

Hand in Hand Gold Prospect

The Hand in Hand Prospect occurs on the ENE striking Sunnyside fault approximately 1,150m ENE of the Sunnyside Gold Prospect and may represent a strike continuation of the Sunnyside mineralisation.

A series of historic prospecting pits and two shallow shafts have been developed on an outcropping zone of fault breccia along 250m of strike length. Historic rock chip sampling returned significant gold values, including:

- **11.5g/t Au** and **4.74g/t Au** (Table 7)

Previous explorers completed six shallow percussion drill holes at the Hand in Hand prospect for a total of 85m with best results of (Table 5):

- **6m @ 2.67g/t Au** from 4m (**incl. 4m @ 3.78g/t Au from 6m**) in HHP1A
- **10m @ 0.3g/t Au** from 2m (**incl. 2m @ 0.56g/t Au from 2m**) in HHP1B
- **2m @ 0.39g/t Au from 6m and 2m @ 0.28g/t Au** from 12m in HHP2B

Melrose-Postman's Creek Gold Prospect

Early ore discovery from the area assayed up to **933g/t Au⁸**. The geology comprises predominantly feldspathic, lithic, and fine-grained micaceous sandstone and metamorphosed siliceous argillites. Intrusive dykes varying in width from 0.45m to 3.0m parallel the lodes in the Lone Hand Mine. The old UG workings are inaccessible. The lode appears to be vein quartz and cherty breccia. A relationship to the Melrose-Sunnyside Fault is inferred due to the prospect's location along the line of strike of that feature, though no evidence of major faulting was observed. Some workings were observed on shear zones oblique to the Fault's projected orientation.

⁸ Osborne, 1975

SUMMARY OF ENMORE GOLD PROJECT

The Enmore Gold Project (EL8479) covers an area of 134km² and is located in New England Fold Belt (NEFB) in NE NSW, approximately 30km from the town of Armidale and only 20km south of the **Hillgrove Au-Sb Mine (1.7Moz Au)**. In addition to Hillgrove, the NEFB hosts several large deposits including the **Ravenswood Mine (8Moz Au)**, **Mt Morgan Mine (7.7Moz Au, 0.36Mt Cu)** and **Cracow (2.5Moz Au)**⁹. Despite its clear prospectivity and total endowment of +35Moz Au, the NEFB remains underexplored and the NSW segment of the belt considerably more so than the QLD segment.

Note that references to nearby or proximate discoveries do not in any way guarantee that the Company will have any or similar successes in delineating a Mineral Resource. Refer to disclaimer on page 17.

Gold mineralisation at Enmore is orogenic in style and structurally controlled along three major NE trending structures. The hydrothermal system was long-lived with two vein types observed:

- An early relatively low grade ductile silicified and sulfidic lode style mineralisation constrained within and generally parallel to mylonite zones formed on the major NE trending structures.
- A later and higher-grade mineralisation event associated with brittle deformation in dilational and rheologically controlled shoots tangential or oblique to the mylonite zones. Gold occurrences associated with later event generally have a higher proportion of free gold and significantly higher gold grades than the lode style structures.

Drilling Highlights¹⁰

Sunnyside Prospect

- 174m @ 1.83g/t Au from 0m; inc. 100m @ 2.34g/t Au from 59m; inc. 31m @ 3.05g/t Au from 115m and 3m @ 8.86g/t Au from 172m to EOH (OSSRC006)
- 119m @ 0.99g/t Au from 140m; and 4m @ 8.85g/t Au from 184m (OKDD001)
- 100.5m @ 1.29g/t Au from 107m to EOH (OKDD002)
- 4m @ 11.94g/t Au from 0m (SP3B)
- 2m @ 14.6g/t Au from 46m (SP13E)

Borah Prospect

- 4m @ 20.63g/t Au from 92m, inc. 1m @ 58g/t Au from 93m (BSD5)
- 6m @ 4.61g/t Au from 65m (BSD1)

Underground Sampling Highlights⁷

Lone Hand Prospect

- 0.45m @ 234g/t Au; 0.91m @ 21g/t Au; 3m @ 15g/t Au

Borah Prospect

- 4m @ 7.06g/t Au

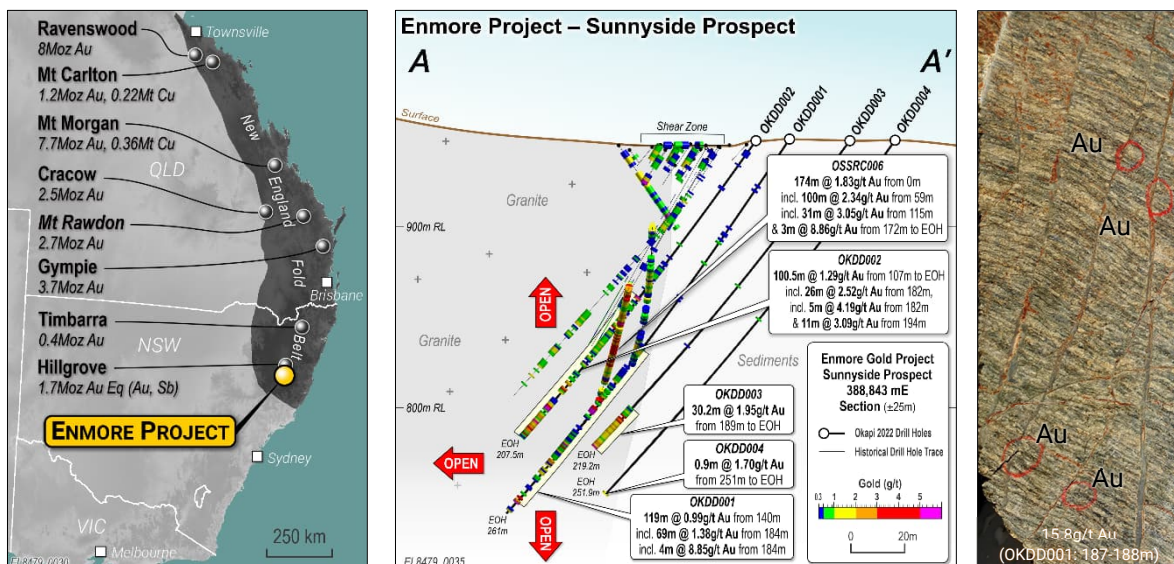


Figure 7. Enmore Gold Project relative to significant deposits in the NEFB and Hillgrove Au-Sb Mine.

⁹ Phillips, 2017

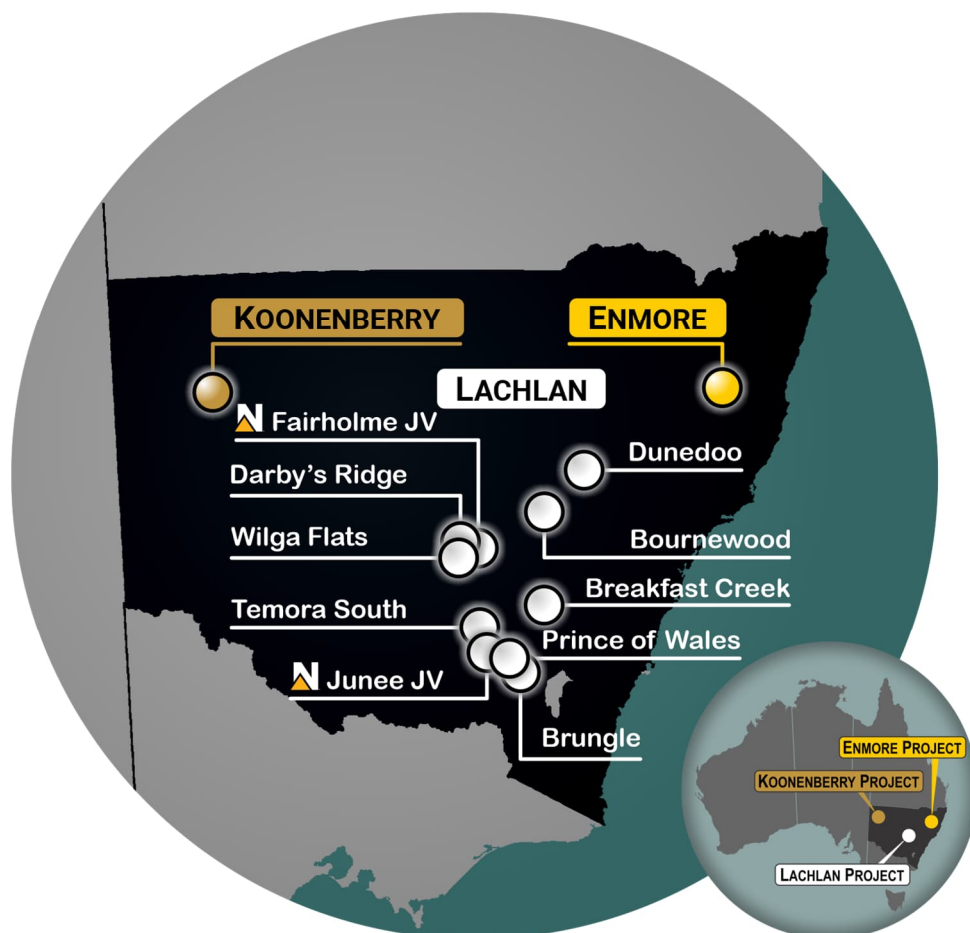
¹⁰ Refer ASX Announcement (ASX:KNB) dated 17/10/2024

FORWARD PROGRAM

Koonenberry's maiden diamond drill program aims to test the impressive widths and grades of gold mineralisation previously reported at Sunnyside. As discussed herein, these highly significant intercepts remain open along strike, across strike to the NW, down dip as well as up dip. This drilling campaign will further improve our understanding of the controls on mineralisation and identify the optimal drilling direction for the high-grade shoots. In addition, the program will aim to expand the existing mineralised footprint.

Results from the program will be used to design a follow up diamond drill program to test the continuity of mineralisation at Sunnyside in multiple directions. Results from the soil program will also be used to plan drilling at other prospects in the district.

Koonenberry Gold has a diverse portfolio of high-quality gold and copper projects in highly prospective areas of NSW and plans to prioritise programs to maximise value for its shareholders. The Company looks forward to providing regular exploration updates as this work progresses.



This ASX release was authorised by the Board of the Company.

For more information please contact:

Dan Power
 Managing Director
 +61 8 6245 9869

info@koonenberrygold.com.au

Johnathon Busing
 Company Secretary
 +61 8 6165 8858
jb@11corporate.com.au

For further information regarding the Company and its Projects please visit www.koonenberrygold.com.au

-ENDS-

For personal use only

ABOUT KOONENBERRY GOLD

Koonenberry Gold Ltd is a minerals explorer aiming to create value for shareholders through the discovery of Gold and Copper in Frontier, Emerging and World Class geological terranes. With the acquisition of the Enmore Gold Project & Lachlan Project the Company sees itself at the discovery inflection point of the value creation curve and strategically positions itself with one of the most significant exploration portfolios in NSW covering 4,192 km.²

100% Owned Projects	
Au Koonenberry (15 contiguous ELs; 2,060km ²) <ul style="list-style-type: none"> Highly prospective and underexplored Abundant evidence for Au (200km² nuggets) Pipeline of projects with 34km Au soils Multi million ounce Au potential 	Cu Koonenberry (EL9225; 418km ²) <ul style="list-style-type: none"> Prospective craton margin setting Coincident gravity + magnetic highs S2R & AIC to Nth, G11 to Sth 20km prospective stratigraphy
Au Enmore (EL8479; 134km ²) <ul style="list-style-type: none"> 20km Sth of 1.7Moz Hillgrove Au Mine 174m @ 1.83g/t Au from 0m (Sunnyside) 0.45m @ 234g/t Au from u/g workings Potential for high grade shoots 	Cu/Au Breakfast Creek (EL9313; 392km ²) <ul style="list-style-type: none"> 55km Sth of 35.1Moz Cadia Cu-Au Mine +6km Cu-Au soil anomaly 7.02g/t Au, 1.96% Cu; 3.4g/t Au, 1.1% Cu; 0.5g/t Au, 18.5% Cu rocks
Au Wilga (EL9272; 272km ²) <ul style="list-style-type: none"> 20km NNW of 13Moz Cowal Au Mine Gold mineralisation at EL Boundary +4km Carbonate-Base Metal (CBM) trend 	Cu/Au Bournewood (EL9137; 43km ²) <ul style="list-style-type: none"> 40km SW of 7.3Moz Boda-Kaiser deposit 13.3g/t Au and 5.7% Cu rock chips Numerous historic workings
Au Prince of Wales (EL9533; 11km ²) <ul style="list-style-type: none"> Historical shafts and workings (170m deep) 4.0km long structural trend Very limited drilling 	Cu Brungle (EL9532; 157km ²) <ul style="list-style-type: none"> Significant scale BHP stream sediment Cu 8.43g/t Au & 1.37% Cu rock chips Large ovoid shaped magnetic anomalies
Au Temora South (EL8895; 110km ²) <ul style="list-style-type: none"> 16km Sth of 1.4Moz Gidginbung Au-Cu Mine 12.7g/t Au, 4.98g/t Au, 1.65g/t Au rocks 4m @ 1.93g/t Au to EOH (roadside RAB) 	Cu Darby's Ridge (EL8876; 72km ²) <ul style="list-style-type: none"> Intrusion related Cu/Au Large >2km Au-Cu Air Core anomaly Bullseye mag high + chargeability anomalies
Au Dunedoo (EL9138; 96km ²) <ul style="list-style-type: none"> 65km Nth of 491Moz Ag Eq Bowdens deposit +8km Au soil anomaly (>10ppb Au) 1.24g/t Au, 12g/t Ag rock chip Untested by drilling 	
Farm-in and Joint Venture Projects (Newmont Exploration Manager)	
Cu/Au Junee JV (EL8470; 256km ²) <ul style="list-style-type: none"> Unusually fertile segment of Macquarie Arc ¹¹ 25x Targets; 4x alkalic porphyry systems 224m @ 0.19% Cu, 0.2g/t Au from 172m <i>\$23.9M spent to date</i> 	Cu Fairholme JV (EL9467; 169km ²) <ul style="list-style-type: none"> Large igneous complex (Phase 4) Cover of only 36-150m Northparkes-style "doughnut" mag features Cu/Au in Air Core (>0.1g/t Au, >500ppm Cu)

¹¹ Alan Wilson, 2022.

TENEMENTS

Koonenberry Project

Licence Number	Area (km ²)*	Location	Title Holder	Equity Interest
EL6803	156.22	NSW	Lasseter Gold Pty Ltd	100%
EL6854	59.02	NSW	Lasseter Gold Pty Ltd	100%
EL7635	23.60	NSW	Lasseter Gold Pty Ltd	100%
EL7651	47.20	NSW	Lasseter Gold Pty Ltd	100%
EL8245	88.50	NSW	Lasseter Gold Pty Ltd	100%
EL8705	5.90	NSW	Lasseter Gold Pty Ltd	100%
EL8706	295.37	NSW	Lasseter Gold Pty Ltd	100%
EL8819	168.36	NSW	Lasseter Gold Pty Ltd	100%
EL8918	162.64	NSW	Lasseter Gold Pty Ltd	100%
EL8919	277.25	NSW	Lasseter Gold Pty Ltd	100%
EL8949	23.62	NSW	Lasseter Gold Pty Ltd	100%
EL8950	32.47	NSW	Lasseter Gold Pty Ltd	100%
EL9491	372.16	NSW	Lasseter Gold Pty Ltd	100%
EL9492	321.66	NSW	Lasseter Gold Pty Ltd	100%
EL9493	26.22	NSW	Lasseter Gold Pty Ltd	100%
EL9225	417.70	NSW	Gilmore Metals Pty Ltd	100%

Table 2. Koonenberry Gold's 100% owned subsidiaries Lasseter Gold Pty Ltd and Gilmore Metals Pty Ltd own a 100% interest in sixteen (16) granted tenements making up the Koonenberry Gold Project.

*Area is calculated from the ellipsoid, not planimetric.

Enmore Gold Project

Licence Number	Name	Area (km ²)*	Location	Title Holder	Equity Interest
EL8479	Enmore	134.22	NSW	Panex Resources	100%

Table 3. Enmore Gold Project.

Lachlan Project

Licence Number	Name	Area (km ²)*	Location	Title Holder	Equity Interest	Conditions
EL8895	Temora South	110.35	NSW	Gilmore Metals Pty Ltd	100%	
EL9313	Breakfast Creek	392.25	NSW	Gilmore Metals Pty Ltd	100%	
EL9533	Gundagai	11.25	NSW	Gilmore Metals Pty Ltd	100%	
EL9532	Brungle	156.92	NSW	Gilmore Metals Pty Ltd	100%	
EL9138	Dunedoo	96.03	NSW	Gilmore Metals Pty Ltd	100%	
EL8876	Darby's Ridge	71.83	NSW	Gilmore Metals Pty Ltd	100%	
EL9137	Bournewood	43.35	NSW	Gilmore Metals Pty Ltd	100%	0.5% NSR
EL9272	Wilga Flats	272.42	NSW	Gilmore Metals Pty Ltd	100%	0.5% NSR
EL9467	Fairholme	169.43	NSW	Gilmore Metals Pty Ltd	51%	
EL8470	Junee	256.29	NSW	Newmont Exploration Pty Ltd	20%	

Table 4. Gilmore Metals Pty. Ltd. owns a 100% interest in eight (8) granted tenements as set out above.

Newmont Exploration Pty Ltd has earned an 80% interest in the Junee project (EL8470) and is currently in the earn in phase through a farm-in and joint venture agreement on the Fairholme project (EL9467). In addition, Newmont Exploration Pty Ltd holds a 0.5% NSR on the Bournewood (EL9137) and Wilga Flat (EL9272) Projects.

Prospect	Hole ID	(m) From	(m) To	Interval (m)	Au (g/t)	Source
Borah	BSD5	85	98	13	7.10	1
Borah	<i>including</i>	92	96	4	20.63	1
Borah	<i>including</i>	93	94	1	58	1
Borah	GR-B8	90.7	106	15.3	3.26	2
Borah	<i>including</i>	90.7	94.5	3.8	7.32	2
Borah	<i>including</i>	90.7	91.7	1	11.7	2
Borah	<i>including</i>	102	105	3	5.22	2
Borah	BSD1	65	102	37	1.39	1
Borah	<i>including</i>	65	71	6	4.61	1
Borah	GR-B1	144.62	146.62	2	5.48	2
Borah	GR-B3	166.12	170.35	4.23	2.87	2
Borah	<i>including</i>	168.4	168.65	0.25	23.8	2
Borah	BSP3	100	122	22	1.73	1
Borah	<i>including</i>	104	112	8	3.21	1
Ben Evis	BAP1G	6	18	12	0.63	5
Ben Evis	<i>including</i>	12	14	2	2.71	5
Ben Evis	BP3B	14	16	2	4.29	5
Ben Evis	and	22	26	4	0.69	5
Ben Evis	BP2A	40	44	4	0.64	5
Ben Evis	BP1B	26	28	2	0.52	5
Hand in Hand	HHP1A	4	10	6	2.67	4
Hand in Hand	<i>including</i>	6	10	4	3.78	4
Hand in Hand	HHP1B	2	12	10	0.3	4
Hand in Hand	<i>including</i>	2	4	2	0.56	4
Hand in Hand	HHP2B	6	8	2	0.28	4
Hand in Hand	and	12	14	2	0.28	4
Lone Hand	GR-LH2	90.75	91.55	0.8	0.68	2
Sunnyside	SP24C	6	18	12	1.86	4
Sunnyside	SP24E	18	38	20	1.71	4
Sunnyside	SP13E	18	28	10	1.32	4
Sunnyside	GR-SS1	90	117	27	0.76	2
Sunnyside	SS9	82	122	40	0.62	1
Sunnyside	OSSRC002	51	90	39	1.19	6
Sunnyside	<i>including</i>	70	82	12	2.10	6
Sunnyside	OSSRC005	9	15	6	1.27	6
Sunnyside	OSSRC005	40	58	18	1.08	6

Table 5 - Significant drill hole intersections at Enmore Gold Project not previously reported. Maximum internal dilution is 4m @ <0.1g/t Au.

Prospect	Hole ID	Easting	Northing	mAHD	Azi. (True Nth)	Dip	Depth (m)
Borah	BSD5	385348	6596522	1023	336	-45	106
Borah	GR-B8	385400	6596537	1023	335	-45	119.2
Borah	BSD1	385295	6596478	1027	1	-55	150
Borah	GR-B1	385253	6596589	1044	117	-55	226.6
Borah	GR-B3	385250	6596620	1051	117	-55	210.6
Borah	BSP3	385349	6596494	1010	337	-60	193
Ben Evis	BAP1G	386562	6596796	1043	349	-55	30
Ben Evis	BP3B	386485	6596742	1046.25	164	-60	26
Ben Evis	BP2A	386441	6596739	1045	161	-60	65
Ben Evis	BP1B	386392	6596708	1044	161	-60	30
Hand in Hand	HHP1A	390104	6596860	963	315	-48	13
Hand in Hand	HHP1B	390097	6596867	963	315	-52	12
Hand in Hand	HHP2B	390151	6596896	967	315	-50	15
Lone Hand	GR-LH2	393964	6598494	643	15	-45	144.3
Sunnyside	SP24C	388858	6596421	940	21	-57	341
Sunnyside	SP24E	388852	6596440	938	53	-77	161
Sunnyside	SP13E	388891	6596463	940	56	-55	161
Sunnyside	GR-SS1	388872	6596394	940	151	-60	340
Sunnyside	SS9	388900	6596415	938	126	-60	339
Sunnyside	OSSRC002	388866	6596389	941	131	-60	340
Sunnyside	OSSRC005	388863	6596429	939	150	-60	61

Table 6 – Enmore Gold Project Drill Hole Collar locations and orientation.

Prospect	Sample Type	Sample ID	Easting	Northing	Au (g/t)	Source
Ben Evis	Grab	BEN 9	Unknown	Unknown	41.1	4
Ben Evis	Grab	BEN 7	Unknown	Unknown	25.9	4
Ben Evis	Grab	BEN 31	Unknown	Unknown	13.8	5
Ben Evis	Grab	BEN 1	Unknown	Unknown	9.18	4
Ben Evis	Grab	BEN 3	Unknown	Unknown	6.19	4
Ben Evis	Grab	BEN 4	Unknown	Unknown	2.36	4
Hand in Hand	Rock Chip	WJH-72	390160	6596900	11.5	4
Hand in Hand	Float	WJS-64	390109	6596874	4.74	4

Table 7 – Enmore Gold Project significant surface sample location not previously reported.

Prospect	Sample Type	Sample ID	Easting	Northing	Interval (m)	Au (g/t)	Source
Borah	UG Channel Chip	S2825-26	Unknown	Unknown	4	2.22	3
Borah	UG Channel Chip	WJ39&S2820-22	Unknown	Unknown	7.25	2.50	3
Borah	UG Channel Chip	WJ24-27	Unknown	Unknown	7	4.6	3
Borah	<i>including</i>	WJ26-27	Unknown	Unknown	4	7.06	3
Borah	UG Channel Chip	WJ20	Unknown	Unknown	2	2.63	3

Table 8 – Enmore Gold Project significant Underground sample location not previously reported.

Note: Samples with Easting and Northing values marked “unknown” in Tables 7 and 8 do not have recorded coordinate data in the historical source data reports. Sample were recorded as being from the Prospect location, however their precise locations cannot be accurately determined and must be interpreted with caution. The data sources for these samples are referenced below. Nothing has come to the attention of Koonenberry Gold that causes it to question the reliability of these Exploration Results other than the precise locations.

DATA SOURCES

- 1) Lewington, G. 1984. Exploration report EL 1697, Enmore, Armidale district. R00014531 (GS1984/039). Getty Oil Development Co Ltd.
- 2) McDonald, B.A. 2006. Joint annual report period ending November 18, 2006 for exploration licenses 4619, 4702, 6502 & 6519, p7. R00054917 (GS2007/018); and Henley, H.F. 1985. The Enmore-Melrose goldfield, Figure 6. R00005777 (GS1983/033)
- 3) Hill, R.L. 1994. First annual exploration report, EL 4619, Armidale area, R00000011. Warren Jay Holdings Pty Ltd.
- 4) Hill, R.L. 1996. Third annual exploration report EL4702, R00002515.
- 5) Hill, R.L. 1997. Fourth annual exploration report EL4702, R00020233.
- 6) Okapi Resources, 2021. ASX:GUE announcement 16/9/2021.

REFERENCES

- 17/10/2024 KNB (ASX). Transformational acquisition of exciting NSW Au and CuAu portfolio.
- 29/11/2024 KNB (ASX). Koonenberry Gold completes acquisition of Enmore Gold and Lachlan Projects in NSW.
- 24/01/2025 KNB (ASX). Quarterly Report for the period ending 31 December 2024.

- 05/08/2024 LRV (ASX). Hillgrove Gold-Antimony Project Pre-Feasibility Study including Maiden Ore Reserve.

- Alan Wilson, 2022. GeoAqua Consultants Ltd, Internal Report for Gilmore Metals.
- Ashley, P. M, and craw, D., 2004. Structural controls on hydrothermal alteration and gold-antimony mineralisation in the Hillgrove area, NSW, Australia.
- Banks, M., 2010. Enmore Gold Project, NSW, Australia. Technical review of geology, mineralisation and potential for Olympus Pacific Minerals inc.
- Buckman, S. and Blevin, P. L., 2010. New England Orogen proceedings of a conference held at the University of New England, Armidale, NSW, Australia, November 2010.
- Bryant, C. J. and Chappell, B. W., 2010. New England Batholith: unravelling the compositional diversity.
- Ellingworth, B., 2020. Fourth Annual Report for the Enmore Gold Project EL8479 for the period 21st Oct 2019 to 21st Oct 2020. NSW Department of Planning and Environment.
- Downes, P. M., 2017. A mineral system model for orogenic Au and Au-Sb deposits in the southern New England.
- Okapi Resources 2021, *Okapi Proceeds with Enmore Gold Project*, ASX release, Okapi Resources, Perth, 13 January 2021, viewed 20 September 2021.
- Osborne, I., 1975. Annual Report Compilation, Uralla Division – Manilla/Dorrigo Sheet 1875 – 1975. Geological Survey of New South Wales, pp37 (year 1889).
- Phillips, G. N. (Ed), 2017. Australian Ore Deposits (The Australasian Institute of Mining and Metallurgy: Melbourne).
- Simpson, C., 2010. Gold, antimony and arsenic trends in the Syndicate Deposit, Hillgrove.

Competent Persons Statement

The information in this announcement that relates to Exploration Results is based on information compiled under the supervision of Mr Paul Wittwer, who holds a BSc Geology (Hons.), is a Member of the Australian Institute of Geoscientists (AIG) and the Australian Institute of Mining and Metallurgy (AusIMM) and is the Exploration Manager of Koonenberry Gold Limited. Mr Wittwer has sufficient experience that is relevant to the style of mineralisation and type of deposit under consideration and to the activity which he is undertaking to qualify as a Competent Person as defined in the 2012 Edition of the 'Australasian Code for Reporting Exploration Results, Mineral Resources and Ore Reserves.' Mr Wittwer consents to the inclusion in this report of the matter based on his information in the form and context in which it appears. Where reference is made to previous announcements of exploration results in this announcement concerning the Company's projects, the Company confirms that it is not aware of any new information or data that materially affects the information and results included in those announcements. The information in this announcement that relates to the previous exploration results have been cross referenced to the original announcement or are from the announcements listed in the references table.

Forward looking statements

This announcement may include forward looking statements and opinion. Often, but not always, forward looking statements can be identified by the use of forward looking words such as "may", "will", "expect" "intend", "plan", "estimate", "anticipate", "continue", "outlook" and "guidance" or other similar words and may include, without limitation, statements regarding plans, strategies and objectives of management, anticipated production or construction commencement dates and expected costs or production outputs. Forward looking statements are based on Koonenberry and its Management's good faith assumptions relating to the financial, market, regulatory and other relevant environments that will exist and affect Koonenberry's business and operations in future. Koonenberry does not give any assurance that the assumptions on which forward looking statements are based will prove to be correct, or that Koonenberry's business or operations will not be affected in any material manner by these or other factors not foreseen or foreseeable by Koonenberry or Management or beyond Koonenberry's control. Although Koonenberry attempts and has attempted to identify factors that would cause actual actions, events or results to differ materially from those disclosed in forward looking statements, there may be other factors that could cause actual results, performance, achievements or events not to be as anticipated, estimated or intended, and many events are beyond the reasonable control of Koonenberry. Accordingly, readers are cautioned not to place undue reliance on forward looking statements. Forward looking statements in these materials speak only at the date of issue. Subject to any continuing obligations under applicable law in providing this information Koonenberry does not undertake any obligation to publicly update or revise any of the forward-looking statements or to advise of any changes in events, conditions, or circumstances on which any such statement is based.

Cautionary statement on visual estimates of mineralisation

Any references in this announcement to visual results are from visual estimates by qualified geologists. Laboratory assays are required for representative estimates of quantifiable elemental values. Visual estimates of mineral abundance should never be considered a proxy or substitute for laboratory analyses where concentrations or grades are the factor of principal economic interest. Visual estimates also potentially provide no information regarding impurities or deleterious physical properties relevant to valuations.

Proximate statements

This announcement may contain references to Mineral Resources, mines and exploration projects of other parties either nearby or proximate to Koonenberry Gold's projects and/or references that may have topographical or geological similarities to Koonenberry Gold's projects, the Enmore Gold project and / or Lachlan projects. It is important to note that such discoveries or geological similarities do not in any way guarantee that the Company will have any success at all or similar successes in delineating a Mineral Resource on any of Koonenberry Gold's projects, the Enmore Gold project and / or Lachlan projects.

**APPENDIX 1. JORC CODE TABLE 1 Checklist of Assessment and Reporting Criteria
- Enmore Gold Project (EL 8479)**
Section 1: Sampling Techniques and Data

Criteria	JORC Code explanation	Commentary
Sampling techniques	<ul style="list-style-type: none"> Nature and quality of sampling (e.g. cut channels, random chips, or specific specialised industry standard measurement tools appropriate to the minerals under investigation, such as down hole gamma sondes, or handheld XRF instruments, etc). These examples should not be taken as limiting the broad meaning of sampling. 	<p>Okapi Drilling (Okapi Resources Ltd in 2021-22)</p> <ul style="list-style-type: none"> Reverse Circulation (RC) drilling was used to obtain 1m samples from which 2-5kg was split off the rig and sent to ALS Laboratories in Orange, NSW. Samples greater than 3kg were riffle split at the lab, prior to pulverising. Diamond drilling was used to obtain core which was cut lengthways in half according to core orientation lines (where available). Samples were pulverised to 85% passing 75 microns. <p>Historical Drilling</p> <ul style="list-style-type: none"> No references witnessed to historic sampling techniques or procedures for drilling, trenching or channel sampling for Silver City Minerals Ltd, Getty Oil Development Company, Warren Jay Holdings Pty Ltd or Zedex Minerals Ltd. No value-add technologies were reported to have been used on drilling samples. No photographs of drill core or percussion samples have been located except for certain select ranges of Zedex diamond and percussion drilling. <p>No details found on historical rock chip or channel chip sampling procedures.</p>
	<ul style="list-style-type: none"> Include reference to measures taken to ensure sample representivity and the appropriate calibration of any measurement tools or systems used. 	<p>Okapi Drilling</p> <ul style="list-style-type: none"> RC Drill cuttings were collected over one metre intervals using a rig mounted rotary cone splitter Where possible, the same side of the diamond half core was submitted for assay. <p>Historical Drilling Sample size ranges are as described:</p> <ul style="list-style-type: none"> Getty Oil generally sampled at 1m intervals over the whole hole. Holes BSD6 & BSD7 were sampled at 2m intervals, reducing to 1m in areas of interest. Rarely sampling was conducted at 0.5m intervals. Zedex drilling was generally sampled at 1m intervals on a selective sampled based on presence or significant alteration and veining. Sample lengths ranged nominally up to 1.5m, and there are only 4

For personal use only

Criteria	JORC Code explanation	Commentary
	<ul style="list-style-type: none"> Aspects of the determination of mineralisation that are Material to the Public Report. In cases where 'industry standard' work has been done this would be relatively simple (e.g. 'reverse circulation drilling was used to obtain 1 m samples from which 3 kg was pulverised to produce a 30 g charge for fire assay'). In other cases more explanation may be required, such as where there is coarse gold that has inherent sampling problems. Unusual commodities or mineralisation types (e.g. submarine nodules) may warrant disclosure of detailed information. 	<p>samples of >1.5m length (max 3.1m). Minimum sample size ranged down to 10cm.</p> <p>No details found on historical rock chip or channel chip sampling procedures.</p> <ul style="list-style-type: none"> Determination of recent and historical mineralisation was assumed to be through appropriate geological logging of samples by the geologist responsible. Industry standard sampling procedures were completed in the recent drilling and are assumed in the historical drilling but have not yet been confirmed. Photographs of Zedex percussion drill sites evidence that samples were collected through a cyclone, but sample reduction and compositing methods are unknown. Coarse and refractory gold issues throughout the Project are sufficient to warrant check sampling with fire assay techniques. Evidence of fire assay check sampling has been found for all operators. Getty and Zedex appear to have resubmitted all results >1.0g/t Au for fire assay. Warren Jay Holdings appears to have employed check sampling on a more random basis and over a wider range of gold grade results.
Drilling techniques	<ul style="list-style-type: none"> Drill type (e.g. core, reverse circulation, open-hole hammer, rotary air blast, auger, Bangka, sonic, etc) and details (e.g. core diameter, triple or standard tube, depth of diamond tails, face-sampling bit or other type, whether core is oriented and if so, by what method, etc). 	<p>Okapi Drilling</p> <ul style="list-style-type: none"> RC drilling completed by BG Drilling using a track mounted Han Jin 16D rig with separate air compressor (Doosan 1050 FM) and using 3.5" rods and 5 7/8" face sampling hammer Diamond drilling completed using HQ core, triple tube <p>Historical Drilling</p> <ul style="list-style-type: none"> Diamond drilling total of 29 holes for 3,899.2m. 4 holes for ~305m by Silver City Minerals Pty Ltd in 1974. Details not available. 9 holes for 1,599.5m by Getty Oil Development Company in 1983-84 by Getty Oil Development Company. HQ precollar reducing to NQ. No references found to oriented core. 16 holes for 1,994.7m by Zedex Minerals Limited in 2004-06 using a UDR650 track mounted rig. Core diameter not referenced. No references found to oriented core or evidence of orientations in core photos. Percussion drilling by Getty is not clearly referenced, though

For personal use only

Criteria	JORC Code explanation	Commentary
		<p>commentary in reports is suggestive of open hole percussion. 41 holes for 4,192m, average 102m.</p> <ul style="list-style-type: none"> Reverse Circulation (RC) drilling Warren Jay Holdings; 143 holes for 3,232m, average 22.6m. Conducted using a 10cm button bit on Sullair Sullitrack Mk2, possibly open hole hammer. Auger drilling by Warren Jay Holdings; 54 holes for 56m, average 1m. Used for soil sampling. No detailed references yet found.
<p>Drill sample recovery</p>	<ul style="list-style-type: none"> Method of recording and assessing core and chip sample recoveries and results assessed. 	<p>Okapi Drilling</p> <ul style="list-style-type: none"> Geologist on site monitored and recorded RC sample recoveries to ensure the samples were representative. Each core run is recorded in diamond drilling as end of run depth, drilled metres, recovered metres. Triple tube drilling undertaken to maximise core recovery in broken zones. <p>Historical Drilling Diamond Drilling:</p> <ul style="list-style-type: none"> Silver City: Originals of this work not found. No reference to sampling procedures found. Getty: Core recovery visually estimated. Recoveries were generally 100% but do dip periodically, showing it was faithfully recorded. Recovery dips to 40% at high grade intersection in BSD5, though there has been no mention of potential impact on grade. Zedex drill logs have not been witnessed. Method of recording recoveries is unknown at this time. <p>RC & Percussion:</p> <ul style="list-style-type: none"> No firm details were found on percussion sampling procedure. Getty mentioned strict sampling procedures. Warren Jay Holdings referred to early termination of some holes when water was intercepted. <p>Channel Sampling:</p> <ul style="list-style-type: none"> Getty sampled costeans along the major structures. No details have been found. Zedex channel sampled underground workings and trenches. Methodology was not described. A reference to channel sampling the

For personal use only

Criteria	JORC Code explanation	Commentary
		Lone Hand Mine described 1m width channel samples at 2m spacings along the length of the adit.
	<ul style="list-style-type: none"> Measures taken to maximise sample recovery and ensure representative nature of the samples. 	<ul style="list-style-type: none"> No measures to ensure representivity were reported from historical drilling.
	<ul style="list-style-type: none"> Whether a relationship exists between sample recovery and grade and whether sample bias may have occurred due to preferential loss/gain of fine/coarse material. 	<ul style="list-style-type: none"> No study has been undertaken to ascertain any sample recovery or bias issues.
Logging	<ul style="list-style-type: none"> Whether core and chip samples have been geologically and geotechnically logged to a level of detail to support appropriate Mineral Resource estimation, mining studies and metallurgical studies. 	<ul style="list-style-type: none"> No Mineral Resource estimation, mining studies or metallurgical studies have been conducted at this stage. <p>Okapi Drilling</p> <ul style="list-style-type: none"> RC drill holes were geologically logged on 1m intervals and in sufficient detail to support descriptions of rock types and mineralisation. All core is geologically logged with lithologies, alteration, mineralisation, veining and structures recorded. <p>Historical Drilling</p> <ul style="list-style-type: none"> Silver City: no details available. Getty: All drilling logged qualitatively in handwritten descriptions grouped by domains, with quantitative assessment of sulfide and quartz content. No geotechnical logging. Zedex & Warren Jay Holdings: Drill logs have not been witnessed at this time. Lithologies have not been witnessed in drill databases at this time. References in reports indicate drilling was logged.
	<ul style="list-style-type: none"> Whether logging is qualitative or quantitative in nature. Core (or costean, channel, etc) photography. 	<ul style="list-style-type: none"> Geological logging was qualitative in nature.
	<ul style="list-style-type: none"> The total length and percentage of the relevant intersections logged. 	<ul style="list-style-type: none"> The entire length of all Okapi and historical holes (the ones with records) were logged.
Sub-sampling techniques and sample preparation	<ul style="list-style-type: none"> If core, whether cut or sawn and whether quarter, half or all core taken. 	<p>Okapi Drilling</p> <ul style="list-style-type: none"> Core was cut using a diamond saw and half core was sent for assay. <p>Historical Drilling</p> <ul style="list-style-type: none"> No photographs of drill core or percussion samples have been located except for certain select ranges of Zedex diamond and percussion drilling. Photographs of Zedex core evidence that core was sawn and half core sent for analysis.
	<ul style="list-style-type: none"> If non-core, whether riffled, tube sampled, rotary split, etc and-whether sampled wet or dry. 	<p>Okapi Drilling</p> <ul style="list-style-type: none"> RC chips were split by individual metre at the drill rig into 2-5kg sub

Criteria	JORC Code explanation	Commentary
	<ul style="list-style-type: none"> <i>For all sample types, the nature, quality and appropriateness of the sample preparation technique.</i> <i>Quality control procedures adopted for all sub-sampling stages to maximise representivity of samples.</i> <i>Measures taken to ensure that the sampling is representative of the in-situ material collected, including for instance results for field duplicate/second-half sampling.</i> <i>Whether sample sizes are appropriate to the grain size of the material being sampled.</i> 	<p>samples using a rotary cone splitter.</p> <p>Historical Drilling</p> <ul style="list-style-type: none"> Industry standard sampling procedures at the time are assumed but have not yet been confirmed. Photographs of Zedex percussion drill sites evidence that samples were collected through a cyclone, but sample reduction and compositing methods are unknown. <p>No references have been found to sampling techniques or procedures for historical channel sampling or rock chip sampling.</p> <ul style="list-style-type: none"> Okapi drilling samples are pulverised at ALS to a QC size specification of 85% <75µm. No references have been found to sampling preparation for historical results. Pulverised samples are rotary split using a Boyd Rotary Splitter in the Okapi drilling. No references have been found for sub-sampling methods for historical results. Duplicates were inserted every 20m for Okapi drilling No references have been found for QAQC methods for historical results Sample size for Okapi drilling is appropriate. No references have been found for sample sizes for historical results.
<p>Quality of assay data and laboratory tests</p>	<ul style="list-style-type: none"> <i>The nature, quality and appropriateness of the assaying and laboratory procedures used and whether the technique is considered partial or total.</i> 	<p>Okapi Drilling</p> <ul style="list-style-type: none"> Assays were sent to ALS Orange\Brisbane which is an ISO/IEC 17025:2005 and ISO9001:2015 certified laboratory. All samples were analysed using a 30g Fire Assay with an AAS finish. (Au-AA25). The nature of the laboratory assay sampling techniques is considered 'industry standard' and appropriate. <p>Historical Drilling</p> <ul style="list-style-type: none"> Getty: submitted drill samples for analysis to COMLABS Pty Ltd, a NATA certified lab, analysing Au by AAS and As by XRF. Zedex submitted drill samples for analysis to ALS Brisbane. Analysed by Au-TL43 (Aqua regia, ICPMS finish, Trace level Au, 25g), then by Au-OG43 where Au>1g/t (Aqua regia, ICPMS finish, Intermediate grade level, 25g). Where Au >1g/t, also analysed by Au-AA25 (ore grade

Criteria	JORC Code explanation	Commentary
		<p>3g fire assay, AAS finish). Multi-elements by ME-ICP41s (Aqua-regia with ICP-AES finish, 0.5g sample) for Ag, As, Bi, Cd, Co, Cu, Fe, Mn, Mo, Ni, P, Pb, S, Sb, Zn. Then by ME-OG49 (ore grade) where Ag>100ppm, or As, Cu, Pb or Zn >1,000ppm.</p> <ul style="list-style-type: none"> Historical Rock Chip and Channel chip samples were analysed at ALS laboratories in Bendigo for Au using ALS method PM209 (50g Fire Assay) and Fe and S using ALS method IC587 (4 acid digest and ICPAES finish) Results from Lone Hand showed >75% of gold in that location reported to coarse fraction. Nugget effect was noted in other prospects as well.
	<ul style="list-style-type: none"> <i>For geophysical tools, spectrometers, handheld XRF instruments, etc, the parameters used in determining the analysis including instrument make and model, reading times, calibrations factors applied and their derivation, etc.</i> 	<ul style="list-style-type: none"> No geophysical, spectral or handheld XRF tools have been reported being used on samples or core.
	<ul style="list-style-type: none"> <i>Nature of quality control procedures adopted (e.g. standards, blanks, duplicates, external laboratory checks) and whether acceptable levels of accuracy (i.e. lack of bias) and precision have been established.</i> 	<ul style="list-style-type: none"> In Okapi drilling standards and blanks were incorporated into each sample batch at 20m intervals No references found for Sample quality, sample interval, sample number and QA/QC inserts (standards, duplicates, blanks) for historical sampling.
Verification of sampling and assaying	<ul style="list-style-type: none"> <i>The verification of significant intersections by either independent or alternative company personnel.</i> 	<ul style="list-style-type: none"> Okapi and historical significant intersections/results in this ASX Release have been verified from the source data by the Competent Person.
	<ul style="list-style-type: none"> <i>The use of twinned holes.</i> 	<ul style="list-style-type: none"> One recent hole OSSRC03 (abandoned at 54m) twinned historic hole SS9. Zedex twinned Getty hole BSD5 with hole GRB8.
	<ul style="list-style-type: none"> <i>Documentation of primary data, data entry procedures, data verification, data storage (physical and electronic) protocols.</i> 	<ul style="list-style-type: none"> Data at the rig from Okapi drilling was collected on paper and later digitised. No documentation of primary data procedures from historical drilling or sampling has been identified. All available historical raw data is publicly available data.
	<ul style="list-style-type: none"> <i>Discuss any adjustment to assay data.</i> 	<ul style="list-style-type: none"> No adjustments have been made to the assay data.
Location of data points	<ul style="list-style-type: none"> <i>Accuracy and quality of surveys used to locate drill holes (collar and down-hole surveys), trenches, mine workings and other locations used in Mineral Resource estimation.</i> 	<p>Okapi Drilling</p> <ul style="list-style-type: none"> All drill holes were sited with a standard Garmin GPS with an Easting and Northing accuracy of approximately +/- 5m and then

For personal use only

Criteria	JORC Code explanation	Commentary
		<p>collars surveyed with a DGPS. Down hole surveys measured using a Reflex single shot instrument.</p> <p>Historical Drilling</p> <ul style="list-style-type: none"> • Silver Valley: No mention of survey control. Silver Valley owned a mining lease and may have surveyed back to ML boundaries. Accuracy is unknown. Topographic control not referenced. • Getty Oil: No reference to datum on maps, though AMG is listed, so datum can be assumed as AGD66. Drillhole azimuth listed in magnetic bearing on logs. Topographic control not referenced. Grids were constructed in key prospect areas so can assume at minimum there was a consistent locational and topographic control for drilling through the local surveyed grid. Accuracy assumed to be ±20m. • Warren Jay Holdings: No details of datum, survey or topographic control have been witnessed yet. • Zedex: post-drilling collar survey using high resolution professional surveying, Datum AGD84. <p>Samples with Easting and Northing values marked “unknown” in Tables 7 and 8 do not have recorded coordinate data in the historical source data reports. Sample were recorded as being from the Prospect location, however their precise locations cannot be accurately determined and must be interpreted with caution.</p>
	<ul style="list-style-type: none"> • <i>Specification of the grid system used.</i> 	<ul style="list-style-type: none"> • The grid system used is Universal Transverse Mercator (UTM) GDA94 MGA Zone 56 for Okapi drilling and historical drilling has been converted to this grid.
	<ul style="list-style-type: none"> • <i>Quality and adequacy of topographic control.</i> 	<ul style="list-style-type: none"> • Some of the historical drilling was professionally surveyed and these collars were used for topographic control.
<p>Data spacing and distribution</p>	<ul style="list-style-type: none"> • <i>Data spacing for reporting of Exploration Results.</i> 	<p>Okapi Drilling</p> <ul style="list-style-type: none"> • Drilling spacing varied depending on the target, but no resource is being reported. <p>Historical Drilling</p> <ul style="list-style-type: none"> • Data spacing is sufficient to establish general continuity of lode style mineralisation along primary structures. Spacing is not currently sufficient or consistent enough to establish continuity of mineralisation on high-grade shoot style reefs (no structural logging has been witnessed or referenced).
	<ul style="list-style-type: none"> • <i>Whether the data spacing and distribution is sufficient to establish the</i> 	<ul style="list-style-type: none"> • No Mineral Resource or Ore Reserve have been estimated.

For personal use only

Criteria	JORC Code explanation	Commentary
	<p><i>degree of geological and grade continuity appropriate for the Mineral Resource and Ore Reserve estimation procedure(s) and classifications applied.</i></p> <ul style="list-style-type: none"> • <i>Whether sample compositing has been applied.</i> 	<ul style="list-style-type: none"> • No compositing of assay data has been applied.
<p>Orientation of data in relation to geological structure</p>	<ul style="list-style-type: none"> • <i>Whether the orientation of sampling achieves unbiased sampling of possible structures and the extent to which this is known, considering the deposit type.</i> 	<p>Okapi Drilling</p> <ul style="list-style-type: none"> • Two RC drillholes (OSSRC05 and OSSRC06) were oriented sub-parallel to the interpreted Sunnyside East strike direction. (northeast trend). This may introduce a sampling bias, producing mineralised intervals more broad in apparent thickness. The rationale was to intersect cross-cutting North-South structures. It remains unclear which direction is the most ideal for drilling. <p>Historical Drilling</p> <ul style="list-style-type: none"> • Getty Oil holes at Bora were drilled targeting the NE trending regional structures. The program established that the target high-grade mineralisation was on a cross-structure at 35° to the original target. Four diamond and five percussion holes consequently missed the target. Holes that did intercept target are at low angle to the sympathetically dipping reef. True orientation of the structure (which may be an echelon reefs) is unknown so materiality of drill angle is currently unknown. • Zedex drillholes are drilled at higher and more optimal angle to the apparent mineralised structure at Borah. • Most drilling outside Borah seems to have been optimized for NE trending, generally NW dipping lode structures. Angle of drilling to higher grade mineralised structures at these other prospects is unclear.
	<ul style="list-style-type: none"> • <i>If the relationship between the drilling orientation and the orientation of key mineralised structures is considered to have introduced a sampling bias, this should be assessed and reported if material.</i> 	<ul style="list-style-type: none"> • Drill testing is too early stage to determine if the drilling orientation has introduced a sampling bias.
<p>Sample security</p>	<ul style="list-style-type: none"> • <i>The measures taken to ensure sample security.</i> 	<ul style="list-style-type: none"> • Samples from the Okapi Drilling were hand delivered to the laboratory in Orange by the geologist conducting the program therefore no 3rd party handled the samples. • No references have been found to procedures for sample security for the historical samples
<p>Audits or reviews</p>	<ul style="list-style-type: none"> • <i>The results of any audits or reviews of sampling techniques and data.</i> 	<ul style="list-style-type: none"> • No audit or reviews were completed of the Okapi Drilling. • No historic audits have been

For personal use only

Criteria	JORC Code explanation	Commentary
		described in reports.

Section 2: Reporting of Exploration Results

Criteria	JORC Code explanation	Commentary
Mineral tenement and land tenure status	<ul style="list-style-type: none"> Type, reference name/number, location and ownership including agreements or material issues with third parties such as joint ventures, partnerships, overriding royalties, native title interests, historical sites, wilderness or national park and environmental settings. 	<ul style="list-style-type: none"> Exploration Licence (EL) 8479 held by Panex Resources WA Pty Ltd. Granted 21 October 2016, renewed in 2021 and 2023 and expiring on 21 October 2029 whereon it is eligible for renewal. There are no known Native Title interests in relation to the Property. No royalty interests are in place.
	<ul style="list-style-type: none"> The security of the tenure held at the time of reporting along with any known impediments to obtaining a licence to operate in the area. 	<ul style="list-style-type: none"> The tenement is current and in good standing.
Exploration done by other parties	<ul style="list-style-type: none"> Acknowledgment and appraisal of exploration by other parties. 	<ul style="list-style-type: none"> Previous exploration has been conducted by Silver Valley (1974) with Diamond drilling. Getty Oil (1983-84). DD and percussion drilling. Mapping, surface sampling. Good systematic investigative work. Getty concluded the lateral and width dimensions (of the old mine workings) were limited and would not deliver their target of $\pm 5\text{Mt @ } 3\text{g/t (482k oz)}$ Au open-pittable and withdrew. Significant drill intercepts (especially BSD5) were not adequately followed-up. Costean and soil sampling was effective at locating exposed mineralisation at a coarse scale. IP surveying demonstrated potential of electrical geophysical methods on this mineralisation style. Warren Jay Holdings (1996-97) drilled 143 holes, at an average depth of 22m testing for open pittable oxide resources. This work defined the oxide mineralisation potential at Sunnyside, but has not contributed more to definition of mineral potential or underground extraction potential elsewhere on the Property. Zedex Minerals Ltd (for Providence Gold & Minerals Pty Ltd) drilled 16 diamond holes at an average 124m depth. Many the holes were partially sampled, including in positions where structures were interpreted to intersect. Additional possible commercial commodities (W & Sb) have not been analysed. Vectoring is not possible with available data. Providence Gold and Minerals Pty Ltd, formerly Warren Jay Holdings Pty Ltd (1994-2022), have completed extensive soil sampling to identify extensive mineral potential along the

Criteria	JORC Code explanation	Commentary
		<p>major and subsidiary structures, as well as an aeromagnetic survey, trenching and underground channel sampling. A program of 8 RC holes for 976m was completed in 2021 and 7 Diamond holes for 1,440.1m were completed in 2022 testing the Sunnyside Prospect under the ownership of Okapi Resources Ltd.</p>
<p>Geology</p>	<ul style="list-style-type: none"> • <i>Deposit type, geological setting, and style of mineralisation.</i> 	<ul style="list-style-type: none"> • The Enmore Gold Project is structurally controlled orogenic Au ± Sb, hosted in the New England Orogen on three major crustal NE trending structures, 20km SSW from Hillgrove Au-Sb Mine. The hydrothermal system was long-lived through tectonic compression & uplift. Two mineralisation styles are broadly described: <ul style="list-style-type: none"> • An early relatively low grade ductile silicified and sulfidic lode style mineralisation constrained within and generally parallel to mylonite zones formed on the major NE trending structures. • A later and higher-grade mineralisation associated with brittle deformation in dilational and rheologically controlled shoots often oblique to but constrained within the mylonite zones. • Gold is present both as free gold and in solution with pyrite and possibly arsenopyrite in varying proportions. Gold occurrences associated with late dilational events generally have a higher proportion of free gold and significantly higher gold grades than the lode style structures. • Enmore mineral occurrences are strongly analogous to Hillgrove.
<p>Drill hole information</p>	<ul style="list-style-type: none"> • <i>A summary of all information material to the understanding of the exploration results including a tabulation of the following information for all Material drill holes:</i> <ul style="list-style-type: none"> - Easting and northing of the drill hole collar. - Elevation or RL (Reduced Level – elevation above sea level in metres) of the drill hole collar. - Dip and azimuth of the hole. - Down hole length and interception depth. - Hole length. • <i>If the exclusion of this information is justified on the basis that the information is not Material and this exclusion does not detract from the understanding of the report, the Competent Person should clearly</i> 	<ul style="list-style-type: none"> • Available data for the majority of the historical holes at the Enmore Property are poorly recorded. The historic drilling is not currently considered material on this basis beyond indication of the mineral potential of the field • Relevant completed drill hole details are presented in Tables • Drillhole and channel sampling information is utilized as indicative reference only to the potential of the Prospect. • No information has been excluded from this release to the best of Koonenberry Gold’s knowledge.

For personal use only



Criteria	JORC Code explanation	Commentary
	<i>explain why this is the case.</i>	
Data aggregation methods	<ul style="list-style-type: none"> In reporting Exploration Results, weighting averaging techniques, maximum and/or minimum grade truncations (e.g., cutting of high grades) and cut-off grades are usually Material and should be stated. 	<ul style="list-style-type: none"> Standard length weighting averaging techniques were used for recent and historical significant intersection calculations. No Top Cuts were used.
	<ul style="list-style-type: none"> Where aggregate intercepts incorporate short lengths of high-grade results and longer lengths of low grade results, the procedure used for such aggregation should be stated and some typical examples of such aggregations should be shown in detail. 	<ul style="list-style-type: none"> All aggregate drill intercepts are length weighted and internal dilution applicable is stated below the table.
	<ul style="list-style-type: none"> The assumptions used for any reporting of metal equivalent values should be clearly stated. 	<ul style="list-style-type: none"> No metal equivalent values have been reported.
Relationship between mineralisation widths and intercept lengths	<ul style="list-style-type: none"> These relationships are particularly important in the reporting of Exploration Results. 	<ul style="list-style-type: none"> Information and knowledge of the mineralised systems are inadequate to estimate true widths at this stage.
	<ul style="list-style-type: none"> If the geometry of the mineralisation with respect to the drill hole angle is known, its nature should be reported. 	<p>Okapi Drilling</p> <ul style="list-style-type: none"> The geometry at Sunnyside is not properly defined at this stage. Two RC drillholes (OSSRC05 and OSSRC06) were oriented sub-parallel to the interpreted Sunnyside East strike direction (northeast trend). This may introduce a sampling bias, producing mineralised intervals more broad in apparent thickness. The rationale was to intersect cross-cutting North-South structures. It remains unclear which direction is the most ideal for drilling. <p>Historical Drilling</p> <ul style="list-style-type: none"> Borah: Holes drilled pre-2004 are interpreted to be drilled largely at low angle sub-parallel to the shoot style mineralisation, and post-2004 drillholes moderate-high angle. Intercept widths do not appear to vary markedly, indicating more controls involved. All holes are currently considered to be down hole length, true width not known. The Borah shoot itself is moderate angle (35°) to the host lode structure. Sunnyside, Sherwood, et al: Holes appear to be largely targeted orthogonal to main lode structure, while shoot style mineralisation can be high or low angle to the lode structure.
	<ul style="list-style-type: none"> If it is not known and only the down hole lengths are reported, there should be a clear statement to this effect (e.g., 'down hole length, true width not known'). 	<ul style="list-style-type: none"> Down hole lengths are reported
Diagrams	<ul style="list-style-type: none"> Appropriate maps and sections (with scales) and tabulations of intercepts 	<ul style="list-style-type: none"> Appropriate maps, sections, and tables for new results have been

Criteria	JORC Code explanation	Commentary
	<i>should be included for any significant discovery being reported These should include, but not be limited to a plan view of drill hole collar locations and appropriate sectional views.</i>	included.
Balanced reporting	<ul style="list-style-type: none"> Where comprehensive reporting of all Exploration Results is not practicable, representative reporting of both low and high grades and/or widths should be practiced to avoid misleading reporting of Exploration Results. 	<ul style="list-style-type: none"> Not all sample assay data has been included in this report as it is not considered material beyond the representatively reported high- and low-grade results presented in the main body of this ASX Release. Gold results reported range from <0.001g/t to 58g/t Au.
Other substantive exploration data	<ul style="list-style-type: none"> Other exploration data, if meaningful and material, should be reported including (but not limited to): geological observations; geophysical survey results; geochemical survey results; bulk samples – size and method of treatment; metallurgical test results; bulk density, groundwater, geotechnical and rock characteristics; potential deleterious or contaminating substances. 	<ul style="list-style-type: none"> These Projects includes exploration data collected by previous companies. Much of this data has been captured and validated in a GIS database.
Further work	<ul style="list-style-type: none"> The nature and scale of planned further work (e.g., tests for lateral extensions or depth extensions or large-scale step-out drilling). 	<ul style="list-style-type: none"> Further exploration will be planned based on data interpretation and geological assessment of prospectivity. This may include surface sampling, geophysical surveys or drilling.
	<ul style="list-style-type: none"> Diagrams clearly highlighting the areas of possible extensions, including the main geological interpretations and future drilling areas, provided this information is not commercially sensitive. 	<ul style="list-style-type: none"> See body of this announcement.

For personal use only