

## VIKING CONFIRMS GOLD DISCOVERY AT NORTHERN DUPLEX GREENFIELDS TARGET

- Further results from the Northern Duplex Target have confirmed the presence of a steeply dipping gold zone, interpreted to extend to surface.
- Drilling has returned a broad downhole intercept in VKRC0068 containing multiple +1g/t Au intercepts featuring;
- **17m at 1.1g/t Au from 28m including;**
  - 1m at 1.6g/t Au from 28m; and
  - 2m at 3.1g/t Au from 34m; and
  - 3m at 1.3g/t Au from 38m
- Assays remain outstanding for 3 additional wide spaced drill traverses, located 0.8km North, 1.7km South and 2.8km South of VKRC0068 respectively.
- Targeted close spaced shallow infill auger sampling programme (20m x 100m grid) over the Northern Duplex Target commencing shortly to define the extent of the target area and guide planning of next bedrock drill testing.
- Phase 2 drill programme to commence in early March at the separate 6km long geochemical anomaly over the Central Duplex Target, with follow up at the Northern Duplex Target to be incorporated once remaining assays received.
- Viking has only drill tested a 3.6km strike length of the larger, previously undrilled, ~23km strike length of the prolific Zuleika Shear and within the same stratigraphic horizon as the >1.2Moz Davyhurst Camp 40km to the south.

Viking Mines Limited (ASX: VKA) ("Viking" or "the Company") is pleased to announce further assay results from the recently completed Phase 1 drilling programme.

Assays have been received for a scissor hole completed at the end of the Phase 1 drill programme completed at the Northern Duplex Target (Figure 1, Figure 2 & Figure 3). These **results confirm the discovery of a steeply dipping gold zone** first intercepted in VKRC0083.<sup>1</sup> VKRC0068 has returned **17m at 1.1g/t Au from 28m**, with multiple individual **intercepts up to 3.1g/t Au**.

These results are from the first of four wide spaced drill traverses completed over the target area with the assays pending for the remaining three drill traverses (Figure 3). Prior to the Company's Phase 1 RC drilling there has been no bedrock drill testing on Viking's 100% controlled tenure for more than 20km to the South and 3km to the North.

### Viking Mines Managing Director & CEO Julian Woodcock said:

*"I am extremely excited by the results received which confirm the presence of a steeply dipping gold zone at the Northern Duplex Target.*

*"This zone correlates with the results seen in the previously reported intercept in hole VKRC0083 and confirm we have discovered a new zone of gold mineralisation in this greenfields target area which has seen no prior bedrock drill testing.*

<sup>1</sup> ASX Announcement 3 February 2025 - Viking Discovers Gold at Northern Duplex Greenfields Target



"I can't emphasise enough the scale of the area we are drill testing and the opportunity for discovery of a substantial gold deposit. The Riverina gold mine owned by Ora Banda Mining (ASX:OBM) is located only 10km to the SW and has a surface strike extent of ~900m. There is ample space between our drilling to host multiple deposits of this size.

"The tenor of these results is analogous to those that are commonly seen proximal to substantial gold deposits and means we have the opportunity to follow the pathway to a higher-grade zone.

"We are focussed on delineating the extents of the target with further field work and follow up drill testing to establish if we have a new gold deposit by the tail.

"I look forward to providing further updates to market as we receive the results from the remaining three drill traverses."

### PHASE 1 DRILLING RESULTS - NORTHERN DUPLEX TARGET

Assay results have been received for VKRC0068, a scissor hole drilled at the Northern Duplex Target on the first drill traverse, following up on the previously reported intercept for hole VKRC0083 of 27m at 0.4g/t Au (>0.1g/t cut-off) from 69m.<sup>1</sup> This hole was planned late in the programme based on visual alteration identified in VKRC0083 and designed to test the orientation and continuity of the observed zone.

**VKRC0068 returned a significant intercept of 17m at 1.1g/t Au from 28m** containing multiple +1g/t Au intercepts including (Figure 1 & Figure 2);

- 1m at 1.6g/t Au from 28m;
- 2m at 3.1g/t Au from 34m; and
- 3m at 1.3g/t Au from 38m.

This drillhole confirms the presence of a steep dipping gold hosting structure which is open along strike with no constraining drillholes. The true extent of the zone cannot be determined, with the next drill traverses located 0.8km North and 1.7km South and assays still pending (Figure 3).

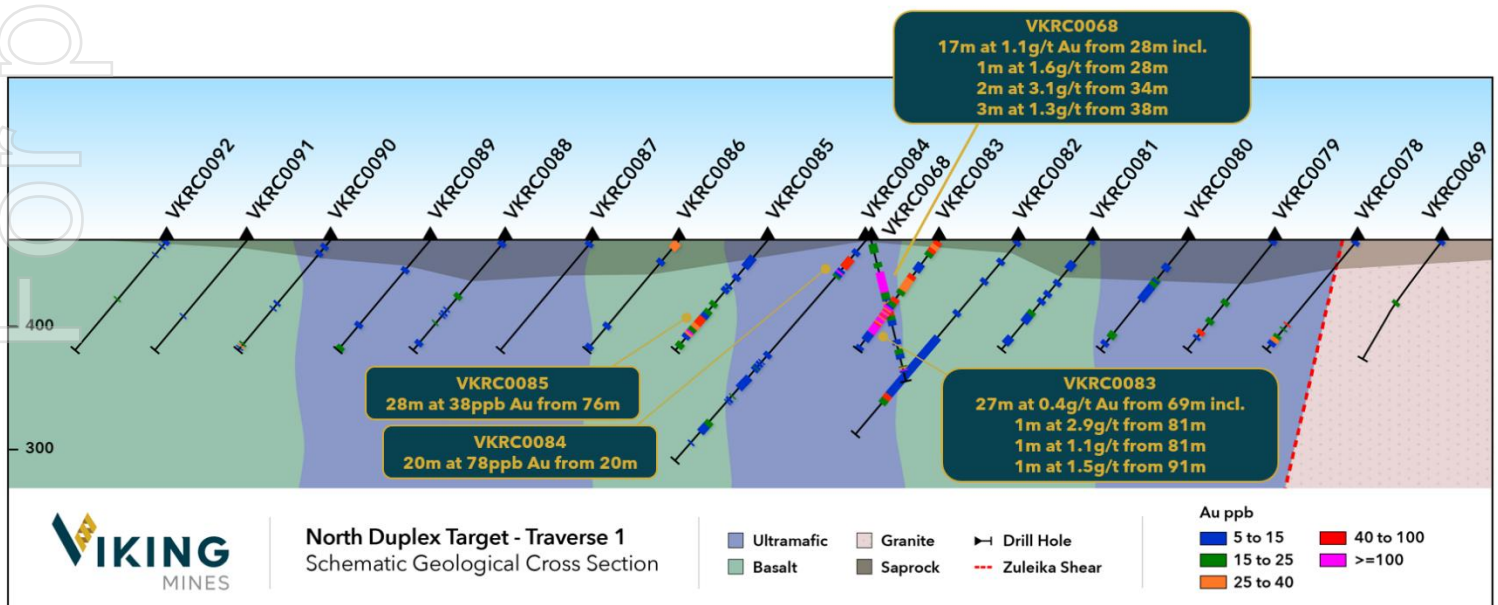


Figure 1; Cross section through drill traverse 1 at the Northern Duplex Target.



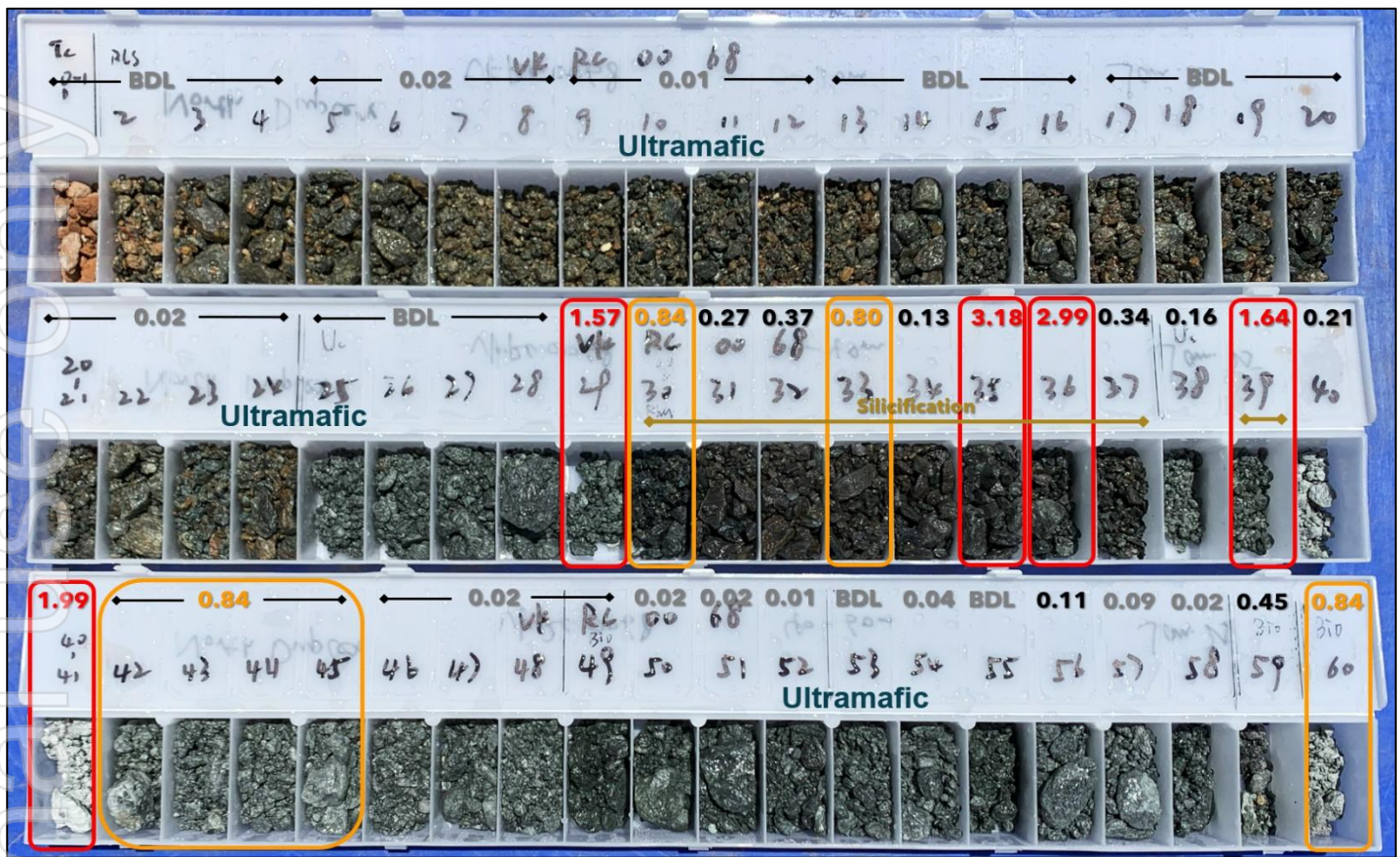


Figure 2; Chip samples from VKRC0068 and analysis results reported as g/t gold. 17m at 1.1g/t Au from 28m with higher grade intercepts up to 3.2g/t as annotated.

## PHASE 1 DRILL PROGRAMME STATUS

The Phase 1 programme totalled ~55 holes for ~7,400m. Results have been received and QAQC completed for 25 holes representing 2,880m of the programme, with 61% still outstanding. All assays are anticipated to be received by late February/early March 2025.

The primary objective of this drill programme is to identify gold bearing pathways along any of the multiple structural positions interpreted from the airborne magnetics. **This objective has been successfully achieved** with the results from the first drill traverse, providing a priority target for follow up exploration.

The Company cannot emphasise enough the scale of the Northern Duplex Target area being tested (>3.6km) and the significance of the success of encountering gold in the first drill traverse across this substantial and prospective greenfields target area (Figure 3 & Figure 4).

## PHASE 2 DRILL PROGRAMME

Viking has commenced final planning and logistics to commence with the Phase 2 drill programme in early March. This programme will initially commence on the Central Duplex Target (Figure 3) which is defined by complex structures observed in the magnetic geophysics and combined with a large >6km >10ppb near surface gold in auger anomaly and other pathfinder geochemistry including Arsenic, Antimony, Bismuth and Tellurium. Additional holes are planned for the Northern Duplex Target once all assays have been received.

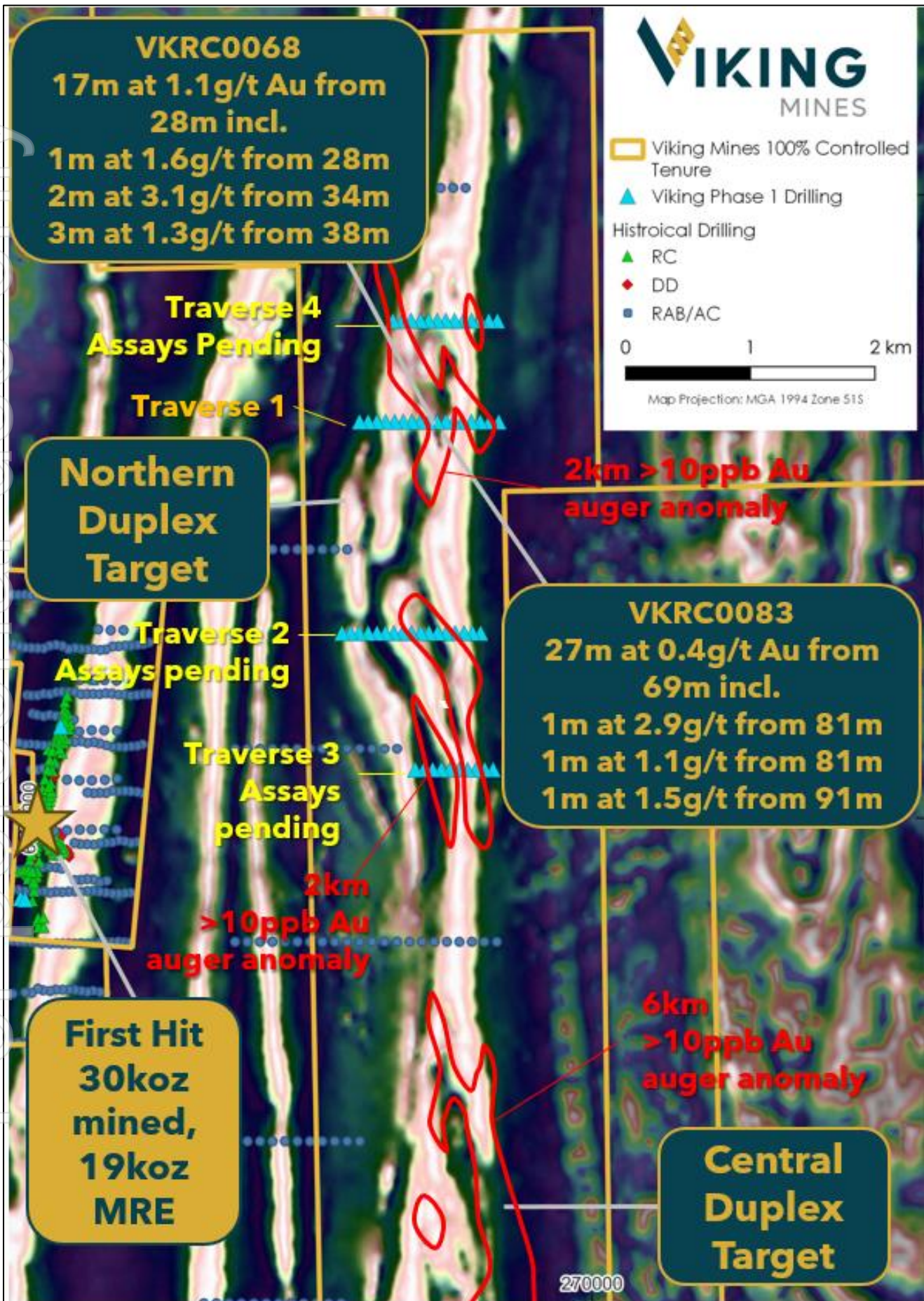


Figure 3; Map showing the 4 completed drill traverses at the Northern Duplex Target and the location of VKRC0083 returning 27m at 0.4g/t Au and VKRC0068 with including 1m intercepts up to 2.9g/t Au and VKRC0069 returning 17m at 1.1g/t Au from 28m with intercepts up to 3.1g/t Au. Note, assays have only been received for 1 of the 4 drill traverses completed.



For personal use only

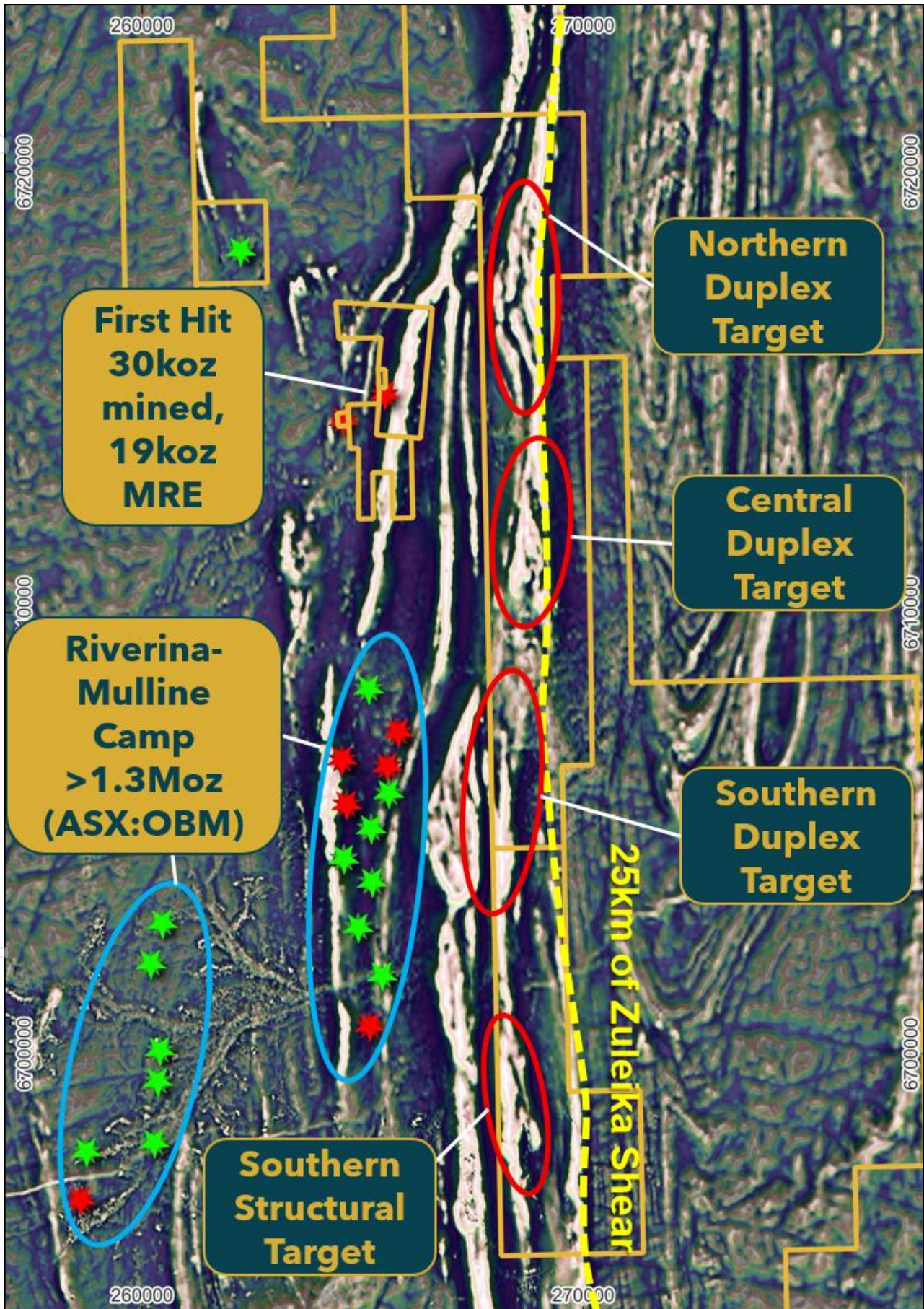


Figure 4; Map showing the 25km strike length of the Zuleika Shear controlled by Viking, the location of known gold deposits, and the structurally complex geological targets being tested for gold mineralisation. Background image is 1VDP-RTP magnetics.





## ADDITIONAL EXPLORATION ACTIVITIES

The Company is commencing with an infill auger drilling programme to reduce the sample spacing from the broad 100m x 400m grid to a 20m x 100m grid. The purpose of this infill auger sampling is to better define the target anomalies to allow targeted drill testing to take place. This approach will ensure the company focusses on the highest tenor anomalies with the highest chance of success.

In addition to an infill auger drilling programme the Company is also obtaining quotes for a high-resolution magnetic geophysics survey to better resolve the structures which form the focus of our targeting.

## FIRST HIT TARGETS

Assay results have been received for the holes drilled at the 3 targets tested close to the high-grade First Hit mine. Holes were drilled at Jana's Reward, First Hit North and First hit South.

No significant assays were returned in this drilling.

## NEXT STEPS

The Company continues to advance exploration activities with the objective of the discovery of new gold deposits on the highly prospective tenement package at the First Hit Project. The following next activities are underway;

- Receipt of assays and interpretation of results from the remaining three drill traverses completed at the Northern Duplex target as part of the Phase 1 drill programme. It is anticipated results will be received in late February/early March 2025.
- Commencement of first pass drill testing of the Central Duplex Target in early March 2025 and potential follow up drilling at the Northern Duplex Target once remaining Phase 1 drill programme assay results have been received and interpreted.
- Infill auger drilling to a 20m x 100m grid (currently 100m x 400m grid) over the target area identified from the results in the first drill traverse from the Phase 1 drill programme to provide a focussed target area for follow up drilling.
- Completion of high-resolution magnetic geophysics to assist targeting and structural interpretation to provide focus areas for follow up drilling over this large expansive target area.

We look forward to providing updates to the market as advancements are made with the Project.

**END**

This announcement has been authorised for release by the Board of the Company.

Julian Woodcock  
Managing Director and CEO  
**Viking Mines Limited**

For further information, please contact:  
Michaela Stanton-Cook - Company Secretary  
**Viking Mines Limited**  
+61 8 6245 0870



### **Forward-Looking Statements**

This document may include forward-looking statements. Forward-looking statements include, but are not limited to, statements concerning Viking Mines Limited's planned exploration program and other statements that are not historical facts. When used in this document, the words such as "could," "plan," "estimate," "expect," "intend," "may", "potential," "should," and similar expressions are forward-looking statements. Although Viking Mines Limited believes that its expectations reflected in these forward-looking statements are reasonable, such statements involve risks and uncertainties and no assurance can be given that actual results will be consistent with these forward-looking statements.

### **Competent Persons Statement - Exploration Results**

Information in this release that relates to Exploration Results is based on information compiled by Mr Julian Woodcock, who is a Member and of the Australian Institute of Mining and Metallurgy (MAusIMM(CP) - 305446). Mr Woodcock is a full-time employee of Viking Mines Ltd. Mr Woodcock has sufficient experience which is relevant to the style of mineralisation and type of deposit under consideration and to the activity being undertaken to qualify as a Competent Person as defined in the 2012 Edition of the 'Australasian Code for Reporting of Exploration Results, Mineral Resources and Ore Reserves'. Mr Woodcock consents to the disclosure of the information in this report in the form and context in which it appears.

For personal use only





## FIRST HIT PROJECT, WESTERN AUSTRALIA

The **First Hit Project** is centred around the historic high-grade First Hit gold mine situated along the prospective Ida and Zuleika Shear zones in the Eastern Goldfields of Western Australia. The Project incorporates 479.9km<sup>2</sup> of tenements with 7 active Mining and Prospecting licences, 5 Exploration licences, and 3 Exploration licences under application. At the core of this landholding is a 6.4km<sup>2</sup> group of contiguous tenements that host the historic First Hit Gold Mine.

Prior to closure of the First Hit Gold Mine by Barra Resources in 2002 and at a time of depressed gold prices of US\$320/oz, the First Hit mine produced ~30k ounces of gold at an average grade of ~7.7g/t Au. The Company is focused on delivering exploration programmes to test near mine extensions and regional targets around the First Hit Project with the objective of defining fertile structures and discovering gold ounces.

The Project area is well serviced by infrastructure and is located 50km west of the sealed Goldfields highway and the township of Menzies. The nearest operating Gold Processing Plant is the Davyhurst Mill 40km to the south, owned and operated by Ora Banda Mining (ASX:OBM). The nearest operating gold mine is the Riverina underground operations, located 8km south of the First Hit gold mine, owned by OBM.



\*See Appendix 1 for data source references



## APPENDIX 1 - DATA SOURCES FOR MINERAL RESOURCE ESTIMATES AND MINE PRODUCTION REFERENCED.

### Riverina-Mulline Camp

Historical production: 305koz Au<sup>5</sup>  
Measured, Indicated & Inferred Mineral Resource: 854koz Au<sup>6</sup>  
OBM Production (FY21-23): 170koz Au<sup>7,8,9</sup>  
TOTAL: 1,333koz

### Central Davyhurst Camp

Historical production: 811koz Au<sup>1</sup>  
2024 Indicated & Inferred Mineral Resource: 396koz Au<sup>2</sup>  
TOTAL: 1,207koz Au

### Bullant

Historic Production: 354koz Au<sup>3</sup>  
Measured, Indicated & Inferred Mineral Resource: 462koz Au<sup>4</sup>  
TOTAL: 816koz

### Kundana Camp

Historic Production to June 2020: 2.75Moz Au<sup>10</sup>  
FY21 to FY24 Production: 291,853oz Au<sup>11,12,13,14</sup>  
Current Ore Reserves: 464koz Au<sup>15</sup>  
Frogs Leg Mineral Resources: 770koz Au<sup>16</sup>  
TOTAL 4.28Moz

### Mt Ida

Historical production: 290koz Au<sup>19</sup>  
2024 Indicated & Inferred Mineral Resource: 752koz Au<sup>20</sup>  
TOTAL: 1,042koz Au

### Bottle Creek

Historic Production: 90koz Au<sup>17</sup>  
Alt Resources Quarterly Report 30 June 2020 - JORC Resource & Reserve Table: 370koz Au<sup>17</sup>  
TOTAL 460koz

### Map Source References

- 1) <https://orabandamining.com.au/projects/davyhurst/>
- 2) <https://orabandamining.com.au/download/annual-mineral-resource-and-ore-reserve-statement/?wpdmdl=12926&refresh=6736d249d1fcd1731646025>
- 3) <https://www.miningnews.net/precious-metals/news/1233885/bullant-gold-packs-bite>
- 4) <https://nortongoldfields.com.au/bullant/>
- 5) <https://orabandamining.com.au/projects/davyhurst/>
- 6) <https://orabandamining.com.au/download/annual-mineral-resource-and-ore-reserve-statement/?wpdmdl=12926&refresh=6736d249d1fcd1731646025>
- 7) <https://orabandamining.com.au/download/annual-report-for-the-year-ended-30-june-2021/?wpdmdl=7200&refresh=6736e1d72a3a51731650007>
- 8) <https://orabandamining.com.au/download/annual-report-for-the-year-ended-30-june-2022/?wpdmdl=8803&refresh=6736e1d71beab1731650007>
- 9) <https://orabandamining.com.au/download/annual-report-2023/?wpdmdl=11152&refresh=6736e1d703e691731650007>
- 10) <https://randmining.com.au/projects/east-kundana-joint-venture/>
- 11) <https://app.sharelinktechnologies.com/announcement/asx/44dffa9bc8eaaa574af7cfda9564c595>
- 12) <https://app.sharelinktechnologies.com/announcement/asx/690381347ddb79dc8261b0f775636da7>
- 13) <https://app.sharelinktechnologies.com/announcement/asx/b13d0741e08843fb98f0e8c8be20eaaa>
- 14) <https://app.sharelinktechnologies.com/announcement/asx/00592059cc0f5c205e3eb6cfa25f3e4d>
- 15) <https://evolutionmining.com.au/storage/2024/02/2680687-Annual-Mineral-Resources-and-Ore-Reserves-Statement.pdf>
- 16) <https://evolutionmining.com.au/storage/2015/08/01647903.pdf>
- 17) <https://www.asx.com.au/asxpdf/20171108/pdf/43p1pnwsv6kd3g.pdf>
- 18) <https://www.asx.com.au/asxpdf/20200814/pdf/44lj6rj9wqk8r0.pdf>
- 19) [https://en.wikipedia.org/wiki/Mount\\_Ida\\_Gold\\_Mine](https://en.wikipedia.org/wiki/Mount_Ida_Gold_Mine)
- 20) <https://deltalithium.com.au/our-projects/mt-ida-lithium-gold/>



## APPENDIX 2 -ASSAY RESULTS TABLE

Hole ID	Hole Type	East (m) MGA94 Zone 51	North (m) MGA94 Zone 51	RL	End of Hole (m)	Azi (°)	Dip (°)	Depth From (m)	Depth To (m)	Length (m)	Au ppb	Au g/t
VKRC0068	RC	268711	6718179	471	120	090	-75	0	4	4	-5	-0.01
								4	8	4	24	0.02
								8	12	4	15	0.02
								12	16	4	-5	-0.01
								16	20	4	-5	-0.01
								20	24	4	24	0.02
								24	28	4	-5	-0.01
								28	29	1	1567	1.57
								29	30	1	840	0.84
								30	31	1	266	0.27
								31	32	1	372	0.37
								32	33	1	799	0.80
								33	34	1	130	0.13
								34	35	1	3174	3.17
								35	36	1	2990	2.99
								36	37	1	337	0.34
								37	38	1	163	0.16
								38	39	1	1644	1.64
								39	40	1	209	0.21
								40	41	1	1985	1.99
								41	45	4	844	0.84
								45	49	4	23	0.02
								49	50	1	18	0.02
								50	51	1	22	0.02
								51	52	1	5	0.01
								52	53	1	-5	-0.01
								53	54	1	38	0.04
								54	55	1	-5	-0.01
								55	56	1	110	0.11
								56	57	1	94	0.09
								57	58	1	20	0.02
								58	59	1	445	0.45
								59	60	1	840	0.84
								60	61	1	258	0.26
								61	62	1	60	0.06
								62	63	1	99	0.10
								63	64	1	89	0.09
								64	65	1	59	0.06
								65	69	4	20	0.02
								69	73	4	12	0.01
								73	77	4	-5	-0.01
								77	81	4	-5	-0.01
								81	85	4	-5	-0.01
								85	89	4	11	0.01
								89	93	4	-5	-0.01
								93	97	4	16	0.02
								97	101	4	6	0.01
								101	105	4	-5	-0.01
								105	106	1	-5	-0.01
								106	107	1	-5	-0.01
								107	108	1	16	0.02
								108	109	1	38	0.04
								109	110	1	-5	-0.01
								110	111	1	160	0.16
								111	112	1	7	0.01
								112	113	1	9	0.01
								113	117	4	-5	-0.01
								117	120	3	-5	-0.01



Hole ID	Hole Type	East (m) MGA94 Zone 51	North (m) MGA94 Zone 51	RL	End of Hole (m)	Azi (°)	Dip (°)	Depth From (m)	Depth To (m)	Length (m)	Au ppb	Au g/t
VKRC0082	RC	268834	6718177	471	210	270	-50	0	4	4	9	0.01
								5	8	3	-5	-0.01
								8	12	4	-5	-0.01
								12	16	4	-5	-0.01
								16	20	4	-5	-0.01
								20	24	4	-5	-0.01
								24	28	4	5	0.01
								28	32	4	-5	-0.01
								32	36	4	-5	-0.01
								36	40	4	-5	-0.01
								40	44	4	-5	-0.01
								44	48	4	10	0.01
								48	52	4	-5	-0.01
								52	56	4	-5	-0.01
								56	60	4	-5	-0.01
								60	64	4	-5	-0.01
								64	68	4	-5	-0.01
								68	72	4	-5	-0.01
								72	76	4	-5	-0.01
								76	80	4	-5	-0.01
								80	84	4	12	0.01
								84	88	4	-5	-0.01
								88	92	4	-5	-0.01
								92	96	4	-5	-0.01
								96	100	4	-5	-0.01
								100	104	4	-5	-0.01
								104	108	4	6	0.01
								108	112	4	14	0.01
								112	116	4	6	0.01
								116	120	4	5	0.01
								120	124	4	0	0.00
								124	128	4	0	0.00
								128	132	4	0	0.00
								132	136	4	0	0.00
								136	140	4	0	0.00
								140	144	4	0	0.00
								144	148	4	0	0.00
								148	152	4	0	0.00
								152	156	4	0	0.00
								156	160	4	6	0.01
								160	164	4	7	0.01
								164	168	4	9	0.01
								168	172	4	52	0.05
								172	176	4	24	0.02
								176	180	4	-5	-0.01
								180	184	4	-5	-0.01
								184	185	1	-5	-0.01
								185	186	1	-5	-0.01
								186	187	1	-5	-0.01
								187	188	1	-5	-0.01
								188	189	1	-5	-0.01
								189	190	1	-5	-0.01
								190	191	1	-5	-0.01
								191	192	1	-5	-0.01
								192	193	1	-5	-0.01
								193	194	1	-5	-0.01
								194	195	1	-5	-0.01
								195	196	1	-5	-0.01
								196	197	1	-5	-0.01
								197	198	1	-5	-0.01
								198	199	1	-5	-0.01
								199	200	1	-5	-0.01
								200	201	1	-5	-0.01
								201	205	4	-5	-0.01
								205	209	4	-5	-0.01
								209	210	1	-5	-0.01

For personal use only





For personal use only

Hole ID	Hole Type	East (m) MGA94 Zone 51	North (m) MGA94 Zone 51	RL	End of Hole (m)	Azi (°)	Dip (°)	Depth From (m)	Depth To (m)	Length (m)	Au ppb	Au g/t
VKRC0084	RC	268707	6718172	471	240	270	-50	0	4	4	-5	-0.01
								4	8	4	-5	-0.01
								8	12	4	-5	-0.01
								12	16	4	6	0.01
								16	20	4	-5	-0.01
								20	24	4	43	0.04
								24	28	4	52	0.05
								28	30	2	70	0.07
								30	32	2	-5	-0.01
								32	34	2	9	0.01
								34	36	2	473	0.47
								36	38	2	10	0.01
								38	40	2	19	0.02
								40	42	2	-5	-0.01
								42	46	4	-5	-0.01
								46	50	4	-5	-0.01
								50	54	4	-5	-0.01
								54	58	4	-5	-0.01
								58	62	4	-5	-0.01
								62	66	4	-5	-0.01
								66	70	4	-5	-0.01
								70	74	4	-5	-0.01
								74	78	4	-5	-0.01
								78	82	4	-5	-0.01
								82	86	4	-5	-0.01
								86	90	4	-5	-0.01
								90	94	4	-5	-0.01
								94	98	4	-5	-0.01
								98	102	4	-5	-0.01
								102	106	4	-5	-0.01
								106	110	4	-5	-0.01
								110	114	4	-5	-0.01
								114	118	4	-5	-0.01
								118	120	2	-5	-0.01
								120	124	4	-5	-0.01
								124	128	4	5	0.01
								128	129	1	-5	-0.01
								129	130	1	-5	-0.01
								130	131	1	-5	-0.01
								131	132	1	-5	-0.01
								132	133	1	-5	-0.01
								133	134	1	7	0.01
								134	135	1	-5	-0.01
								135	136	1	9	0.01
								136	137	1	6	0.01
								137	138	1	-5	-0.01
								138	139	1	6	0.01
								139	140	1	10	0.01
								140	141	1	16	0.02
								141	142	1	11	0.01
								142	143	1	7	0.01
								143	144	1	-5	-0.01
								144	145	1	-5	-0.01
								145	149	4	-5	-0.01
								149	153	4	7	0.01
								153	157	4	5	0.01
								157	161	4	5	0.01
								161	165	4	-5	-0.01
								165	169	4	-5	-0.01
								169	170	1	15	0.02
								170	171	1	6	0.01
								171	172	1	-5	-0.01
								172	173	1	8	0.01
								173	174	1	5	0.01
								174	175	1	-5	-0.01
								175	176	1	9	0.01
								176	177	1	-5	-0.01
								177	181	4	-5	-0.01
								181	185	4	-5	-0.01
								185	189	4	-5	-0.01
								189	193	4	-5	-0.01
								193	197	4	-5	-0.01
								197	201	4	18	0.02
								201	205	4	9	0.01
								205	209	4	11	0.01
								209	213	4	-5	-0.01
								213	217	4	-5	-0.01
								217	218	1	-5	-0.01
								218	219	1	-5	-0.01
								219	220	1	-5	-0.01
								220	221	1	8	0.01
								221	222	1	-5	-0.01
								222	223	1	-5	-0.01
								223	224	1	-5	-0.01
								224	225	1	-5	-0.01
								225	229	4	-5	-0.01
								229	233	4	-5	-0.01
								233	237	4	-5	-0.01
								237	240	3	-5	-0.01



## APPENDIX 3 - JORC CODE, 2012 EDITION - TABLE 1

### JORC Table 1, Section 1 - Sampling Techniques and Data

Criteria	JORC Code explanation	Commentary
Sampling techniques	<i>Nature and quality of sampling (e.g. cut channels, random chips, or specific specialised industry standard measurement tools appropriate to the minerals under investigation, such as downhole gamma sondes, or handheld XRF instruments, etc.). These examples should not be taken as limiting the broad meaning of sampling.</i>	RC chip samples are collected at the drill rig during the drilling process. Samples are collected from a cone splitter by placing a calico bag across the cone splitter apertures as well as a bucket under the splitter to collect the remainder of the sample. Samples are collected every metre drilled with the reject being placed on the ground and the calico bag being placed on top. Each of the calico sample bags average approximately 3kg in weight. Where 1m samples are selected, the calico bag is collected in a new individually numbered calico bag. For 2m or 4m composite samples, representative scoops are taken from each of the sample piles being sampled and composited into a numbered calico bag. All samples selected for analysis are delivered for assay at Intertek laboratories in Kalgoorlie for 50g fire assay analysis. The Competent Person considers these sampling methods appropriate for this style of mineralisation.
	<i>Include reference to measures taken to ensure sample representivity and the appropriate calibration of any measurement tools or systems used.</i>	RC sample recovery is monitored for excessive sample loss and recorded to ensure sample representivity. The Competent Person considers these sampling methods appropriate for this style of mineralisation.
	<i>Aspects of the determination of mineralisation that are Material to the Public Report. In cases where 'industry standard' work has been done this would be relatively simple (e.g. 'reverse circulation drilling was used to obtain 1 m samples from which 3 kg was pulverised to produce a 30 g charge for fire assay'). In other cases more explanation may be required, such as where there is coarse gold that has inherent sampling problems. Unusual commodities or mineralisation types (e.g. submarine nodules) may warrant disclosure of detailed information</i>	RC drilling is used to obtain 1m sample intervals from which the geologist at the rig determines the sample interval to be collected for analysis. 1m samples are collected in areas of interest and either 2m or 4m composite samples are collected using a scoop from the respective sample piles to produce a composite sample for the interval required. On average, approximately 3kg is pulverised by the laboratory to produce a 50g charge for fire assay. Selective 1m samples are collected for multi-element analysis where deemed required. QAQC samples are inserted as described in the relevant section below to monitor for any bias and ensure representivity. The Competent Person considers these sampling and analytical methods appropriate for this style of mineralisation.
Drilling techniques	<i>Drill type (e.g. core, reverse circulation, open-hole hammer, rotary air blast, auger, Bangka, sonic, etc.) and details (e.g. core diameter, triple or standard tube, depth of diamond tails, face-sampling bit or other type, whether core is oriented and if so, by what method, etc.).</i>	Reverse Circulation (RC) drilling is being utilised.
Drill sample recovery	<i>Method of recording and assessing core and chip sample recoveries and results assessed.</i>	RC drilling recoveries are visually estimated and recorded as part of geological logging and sampling process and is estimated as either Good, Fair, Poor or No sample.
	<i>Measures taken to maximise sample recovery and ensure representative nature of the samples.</i>	RC drilling sample recovery is monitored to ensure representivity of the samples. High pressure air compressors with auxiliary boosters and compressors are used to ensure good sample recovery from the drillhole. Drilling equipment and procedures are suitable to maximise sample recovery and the representative nature of the samples. Sample weights are recorded by the laboratory and reviewed with feedback given to the drillers to ensure consistent sample weights are produced.
	<i>Whether a relationship exists between sample recovery and grade and whether sample bias may have occurred due to preferential loss/gain of fine/coarse material.</i>	RC drilling used standard drilling equipment and procedures that are suitable to maximise sample recovery and the representative nature of the samples. Insufficient data has been collected to establish if any bias is present due to loss/gain of fine/coarse material.
Logging	<i>Whether core and chip samples have been geologically and geotechnically logged to a level of detail to support appropriate</i>	Logging of drill cuttings is undertaken as a first pass indication of potential gold and multi-element anomalism. Samples of rock chips from drill cuttings are logged by the geologist in the field, for parameters including, depth, colour, grain size, weathering, lithology, alteration, rock fabric and the presence of minerals potentially related to mineralisation including



Criteria	JORC Code explanation	Commentary
	<i>Mineral Resource estimation, mining studies and metallurgical studies.</i>	quartz and sulphides. Geological logging detail is deemed sufficient to support any appropriate future studies. No geotechnical logging is undertaken on the RC chips/drillholes.
	<i>Whether logging is qualitative or quantitative in nature. Core (or costean, channel, etc.) photography.</i>	Logging of RC chips is qualitative in nature. Photographs are taken of all RC chip trays and sample spoil piles in the field.
	<i>The total length and percentage of the relevant intersections logged.</i>	100% of RC drilling is logged.
<b>Subsampling techniques and sample preparation</b>	<i>If core, whether cut or sawn and whether quarter, half or all core taken.</i>	Not applicable.
	<i>If non-core, whether riffled, tube sampled, rotary split, etc. and whether sampled wet or dry.</i>	All RC samples were collected via a cone splitter to yield predominantly dry sub samples of approximately 3kg from a 1 m downhole sample length. At the laboratory, samples are dried and those <3kg are not split prior to pulverising. If samples are >3kg they are crushed and rotary split at the laboratory to <3kg before being pulverised.
	<i>For all sample types, the nature, quality and appropriateness of the sample preparation technique.</i>	The Competent Person considers the methods and processes as described in previous sections for sample preparation appropriate for this style of mineralisation.
	<i>Quality control procedures adopted for all subsampling stages to maximise representivity of samples.</i>	Standard laboratory procedures adopted for analysis of samples including laboratory duplicate sample analysis and standards. Duplicate sampling has been applied to the RC drill programme (see details below) to measure repeatability of samples. Standards (1:40 samples) and blanks (1:40 samples) are inserted by Viking Mines into the sampling sequence to both check accuracy and precision of the analytical technique and for any contamination in the analytical process. Results are checked on receipt of assay batches and QAQC reports produced by Viking Mines database manager for checking by the geologist. No issues have been identified with the representivity of the samples.
	<i>Measures taken to ensure that the sampling is representative of the in-situ material collected, including for instance results for field duplicate/second-half sampling.</i>	Viking Mines collects field duplicates via scoop samples from the RC sample spoil at a ratio of 1:50 samples. This results in a general coverage of 1 to 2 samples per hole drilled in the current programme. Laboratory analysis involved the duplicate analysis of certain samples are part of the routine lab QAQC. No issues have been identified within Viking's field duplicates or the duplicate analysis reported by the laboratory.
	<i>Whether sample sizes are appropriate to the grain size of the material being sampled.</i>	Sample sizes are considered appropriate to the grain size of the material being sampled given the style of mineralisation being targeted and are industry standard for gold exploration in the Eastern Goldfields.
<b>Quality of assay data and laboratory tests</b>	<i>The nature, quality and appropriateness of the assaying and laboratory procedures used and whether the technique is considered partial or total.</i>	Samples are delivered to Intertek laboratories in Kalgoorlie. Fire Assay method (50g charge) for gold. The analytical technique for gold is considered total. The Competent Person considers the current methods and processes described as appropriate for this style of mineralisation.
	<i>For geophysical tools, spectrometers, handheld XRF instruments, etc., the parameters used in determining the analysis including instrument make and model, reading times, calibrations factors applied and their derivation, etc.</i>	Not applicable.
	<i>Nature of quality control procedures adopted (e.g. standards, blanks, duplicates, external laboratory checks) and whether acceptable levels of accuracy (i.e. lack of bias) and precision have been established.</i>	The QAQC procedures (detailed above) for the RC drilling programme consist of the analyses of certified standards (1:40 - 2.5%), duplicates (1:50 - 2%) and blanks (1:40 - 2.5%). Total QAQC samples consists of 7% of the program. Based on review of the analysis results, no issues have been identified. At times sample transcription errors have been identified and resolved (e.g. samples recorded as blanks when assay confirms is a standard). Based on analysis of standard results, appropriate levels of accuracy and precision have been determined.
	<i>The verification of significant intersections by either independent or alternative company personnel.</i>	No independent verification of sampling has been completed.



Criteria	JORC Code explanation	Commentary
Verification of sampling and assaying	<i>The use of twinned holes.</i>	No twin holes have been completed.
	<i>Documentation of primary data, data entry procedures, data verification, data storage (physical and electronic) protocols.</i>	Primary data for drill cuttings, including sample number, depth, colour, grain size, weathering, lithology, alteration, rock fabric and the presence of minerals potentially related to mineralisation including quartz and sulphides, are collected in the field and entered into a spreadsheet which is then uploaded into relational (Maxwell Datashed) database. Data is managed using the company's sharepoint system and sample information is recorded into notebooks at the time of sampling. The Competent Person considers the process described as appropriate
	<i>Discuss any adjustment to assay data.</i>	No adjustments are made to the data.
Location of data points	<i>Accuracy and quality of surveys used to locate drillholes (collar and downhole surveys), trenches, mine workings and other locations used in Mineral Resource estimation.</i>	The collar positions have been measured using a handheld GPS with an accuracy of +/-5m (z). Upon completion of the drilling programme a qualified surveyor will be engaged to collect more accurate collar coordinates using a differential GPS (accuracy +/- 0.5m). The downhole azimuth and dip are surveyed using an Axis Mining Technology Champ Gyro tool with an accuracy of +/- 1 degree for the azimuth and +/-0.1 degrees for the dip. No MRE is being reported, but the methods being used are deemed suitable for any future MRE estimation.
	<i>Specification of the grid system used.</i>	MGA94 Zone 51S
	<i>Quality and adequacy of topographic control.</i>	Handheld GPS is adequate for laying out collar locations and initial collar coordinate pickup. CP recommends differential GPS as a final survey on completion of the drilling programme.
Data spacing and distribution	<i>Data spacing for reporting of Exploration Results.</i>	Data spacing of drillhole collars is approximately 60m (E-W) to provide a heel to toe coverage across the target area. This ensures that the end of each drillhole is located approximately below the collar of the next drillhole on the drill section. Drill section spacing for the Northern Duplex target ranges from ~810m (northern to north central section) to 1,695m (north central line to south central section) to 1,100m (south central line to southern section). Data spacing between section lines is very large whilst along section lines is sufficient to identify and gold mineralisation.
	<i>Whether the data spacing and distribution is sufficient to establish the degree of geological and grade continuity appropriate for the Mineral Resource and Ore Reserve estimation procedure(s) and classifications applied.</i>	Not applicable, no resource being reported.
	<i>Whether sample compositing has been applied.</i>	Sample compositing has occurred during sample collection as described in the previous sections. Sample composites range from no compositing (1m samples), 2m composites and 4m composites. For reporting of results, intersections are length weighted composites as reported with the full original data presented in the appendix to this report or disclosed in previous reports where referenced.
Orientation of data in relation to geological structure	<i>Whether the orientation of sampling achieves unbiased sampling of possible structures and the extent to which this is known, considering the deposit type.</i>	RC drilling is predominately perpendicular to the strike of the structural trends observed in the magnetic geophysics (270 degree azimuth drilling vs north striking interpreted structures). Dip of drillholes are 50 degrees and structures are interpreted to be sub-vertical, mitigating the risk of unbiased sampling. Based on the limited amount of data obtained so far, this is deemed the most appropriate orientation for the drilling, however this is limited to the extent known at this time.
	<i>If the relationship between the drilling orientation and the orientation of key mineralised structures is considered to have introduced a sampling bias, this should be assessed and reported if material.</i>	No sampling bias has been considered to have been introduced based on the available data. This will continue to be monitored as further data is collected.
Sample security	<i>The measures taken to ensure sample security.</i>	Samples derived from the RC drilling are collected and stored by site personnel at a designated lay-down area on site. These samples are transported to Intertek laboratories in Kalgoorlie by site personnel. Samples are packaged in polyweave bags (~5 samples) and cable tied which in turn are packaged in bulka bags which are tied and transported to the laboratory. The laboratory storage area is in a fenced compound. The Competent Person considers the processes for sample security as appropriate.



Criteria	JORC Code explanation	Commentary
Audits or reviews	The results of any audits or reviews of sampling techniques and data.	No external audits or reviews have yet been undertaken on the sampling data.

## JORC 2012 Table 1 Section 2 - Reporting of Exploration Results

Criteria	JORC Code explanation	Commentary																																													
Mineral tenement and land tenure status	Type, reference name/number, location and ownership including agreements or material issues with third parties such as joint ventures, partnerships, overriding royalties, native title interests, historical sites, wilderness or national park and environmental settings.	<p><u>Tenements and location</u> The First Hit Project tenements are located approximately 50 km due west of the town of Menzies, Western Australia on the Menzies (05) 1:250,000 and Riverina 3038 1:100,000 topographic map sheets, and include:</p> <table border="1"> <thead> <tr> <th>Tenement ID</th> <th>Status</th> <th>Holder</th> </tr> </thead> <tbody> <tr> <td>E29/1133</td> <td>LIVE</td> <td>Viking Mines Ltd (100%)</td> </tr> <tr> <td>E30/0529</td> <td>LIVE</td> <td>Viking Mines Ltd (100%)</td> </tr> <tr> <td>P29/2652</td> <td>LIVE</td> <td>Viking Mines Ltd (100%)</td> </tr> <tr> <td>P30/1163</td> <td>LIVE</td> <td>Viking Mines Ltd (100%)</td> </tr> <tr> <td>P30/1164</td> <td>LIVE</td> <td>Viking Mines Ltd (100%)</td> </tr> <tr> <td>M30/0091</td> <td>LIVE</td> <td>Red Dirt Mining Pty Ltd (100%)</td> </tr> <tr> <td>M30/0099</td> <td>LIVE</td> <td>Red Dirt Mining Pty Ltd (100%)</td> </tr> <tr> <td>P30/1137</td> <td>LIVE</td> <td>Red Dirt Mining Pty Ltd (100%)</td> </tr> <tr> <td>P30/1144</td> <td>LIVE</td> <td>Red Dirt Mining Pty Ltd (100%)</td> </tr> <tr> <td>E30/0517</td> <td>LIVE</td> <td>Baudin Resources (100%)</td> </tr> <tr> <td>E30/505</td> <td>LIVE</td> <td>Viking Mines Ltd (95%), Simon Byrne (5%)</td> </tr> <tr> <td>E29/1131</td> <td>LIVE</td> <td>Viking Mines Ltd (100%)</td> </tr> <tr> <td>E30/0570</td> <td>Pending</td> <td>Viking Mines Ltd (100%)</td> </tr> <tr> <td>E30/0571</td> <td>Pending</td> <td>Viking Mines Ltd (100%)</td> </tr> </tbody> </table> <p>Viking Mines has a 5-year exclusive option with Baudin Resources (a wholly owned subsidiary of Encounter Resources) to acquire 100% of the mineral rights over part of tenement E30/517. The option expires in February 2027. Currently, Viking has no ownership of E30/517 but has full control and exclusive rights to explore on the option area.</p> <p><u>Third Party Interests</u> The nickel rights to M30/99 &amp; M30/91 are held by Riverina Resources Limited and Barra Resources Limited. Viking Mines are not aware of any material 3rd party interests or royalties.</p> <p><u>Native Title, Historical sites and Wilderness</u> Archaeological and ethnographic studies were undertaken for M30/99 prior to further development in 2001. These studies involved an examination of the existing ethnographic data base pertaining to the mining area and</p>	Tenement ID	Status	Holder	E29/1133	LIVE	Viking Mines Ltd (100%)	E30/0529	LIVE	Viking Mines Ltd (100%)	P29/2652	LIVE	Viking Mines Ltd (100%)	P30/1163	LIVE	Viking Mines Ltd (100%)	P30/1164	LIVE	Viking Mines Ltd (100%)	M30/0091	LIVE	Red Dirt Mining Pty Ltd (100%)	M30/0099	LIVE	Red Dirt Mining Pty Ltd (100%)	P30/1137	LIVE	Red Dirt Mining Pty Ltd (100%)	P30/1144	LIVE	Red Dirt Mining Pty Ltd (100%)	E30/0517	LIVE	Baudin Resources (100%)	E30/505	LIVE	Viking Mines Ltd (95%), Simon Byrne (5%)	E29/1131	LIVE	Viking Mines Ltd (100%)	E30/0570	Pending	Viking Mines Ltd (100%)	E30/0571	Pending	Viking Mines Ltd (100%)
Tenement ID	Status	Holder																																													
E29/1133	LIVE	Viking Mines Ltd (100%)																																													
E30/0529	LIVE	Viking Mines Ltd (100%)																																													
P29/2652	LIVE	Viking Mines Ltd (100%)																																													
P30/1163	LIVE	Viking Mines Ltd (100%)																																													
P30/1164	LIVE	Viking Mines Ltd (100%)																																													
M30/0091	LIVE	Red Dirt Mining Pty Ltd (100%)																																													
M30/0099	LIVE	Red Dirt Mining Pty Ltd (100%)																																													
P30/1137	LIVE	Red Dirt Mining Pty Ltd (100%)																																													
P30/1144	LIVE	Red Dirt Mining Pty Ltd (100%)																																													
E30/0517	LIVE	Baudin Resources (100%)																																													
E30/505	LIVE	Viking Mines Ltd (95%), Simon Byrne (5%)																																													
E29/1131	LIVE	Viking Mines Ltd (100%)																																													
E30/0570	Pending	Viking Mines Ltd (100%)																																													
E30/0571	Pending	Viking Mines Ltd (100%)																																													



Criteria	JORC Code explanation	Commentary
		<p>an examination of known ethnographic site distribution. The studies concluded that it was unlikely that the developments will impact any sites of Aboriginal significance. This information was submitted to the Department of Aboriginal Affairs.</p> <p>A search of the Department of Aboriginal Affairs (DAA) Heritage Inquiry System indicates there are no registered Aboriginal Heritage Sites identified on any of Viking's tenements.</p> <p>The mining lease was granted prior to the Native Title Act being enforced.</p>
<p><b>Exploration done by other parties</b></p>	<p><i>Acknowledgment and appraisal of exploration by other parties.</i></p>	<p>The tenements are held in good standing by Red Dirt Mining Pty Ltd. (a wholly owned subsidiary of Viking Mines Ltd) and Viking Mines Ltd. There are no known impediments to obtaining a licence in the area.</p> <p>The Red Dirt tenements have been actively explored and mined since 1886 with the arrival of prospecting parties during the initial Western Australia gold rush. Arthur and Tom Evans founded the First Hit gold mine in 1938. Tom and Arthur worked the mine until Tom sold his share to Riverina station owner Bill Skathorpe in late 1953. Arthur and Bill worked the mine until Bill's death in 1954. George Vujcich Senior bought the mine from Arthur and Bill's estate in late 1955. George and then his son George operated the mine intermittently over a 40-year period. Barmenco purchased the First Hit tenement from George's daughter in late 1996.</p> <p>Regional exploration activities were undertaken by Western Mining Corporation (WMC) and Consolidated Gold Operations prior to 1996 including geochemical sampling, lag sampling and auger programs. The programs covered the various regolith features with a purpose of defining broad geochemical anomalies.</p> <p>From 1996 to 2002 exploration and development was undertaken by Barra Resources or Barmenco.</p> <p>Barmenco Pty Ltd undertook geochemical soil geochemistry on the northern part of M30/99 between 1995 and 2000. Various combinations of multielement geochemistry were completed historically, ranging from gold-only assays to 42 element geochemistry.</p> <p>The following extract from the Barra Resources mine closure and production report provide an insight to the exploration and discovery of the First Hit deposit:</p> <p>"Barmenco Pty Ltd acquired the First Hit tenement in August 1996, with the objective of exploring for and developing moderate sized high grade gold deposits. Because of Barmenco's mining and exploration activities at Two Boys, Karonie, Jenny Wren, Gordon Sirdar and Bacchus Gift mines the period between August 1996 and June 2000 saw only intermittent work at First Hit. Twenty RC drill holes were completed demonstrating the potential for high-grade underground resources.</p> <p>The First Hit deposit was effectively discovered in June 2000 with drill hole BFH 025 which returned 3 zones of mineralisation including 5m @ 60g/t, 7m @ 9.0g/t and 2m @ 3.7g/t".</p> <p>Barra Resources subsequently completed a 20 m x 25 m drill out to 240 m in depth, combined with a detailed feasibility study, culminating in the commencement of mining operations in August 2001.</p> <p>Barra Resources also completed RC drill programs at three prospects within the First Hit Project leases, referred to as First Hit North, First Hit South and Clarkes Well. Minor gold mineralisation was intersected in a small number of holes, but no further exploration was completed.</p> <p>The leases have since been owned by several companies and private operators without much additional exploration.</p>
<p><b>Geology</b></p>	<p><i>Deposit type, geological setting and style of mineralisation</i></p>	<p><u>Regional Geology</u></p> <p>The area of interest lies on the 1:100,000 Riverina geological sheet 3038 (Wyche, 1999). The Mt Ida greenstone belt is a north-striking belt of predominantly metamorphosed (upper greenschist-amphibolite facies) mafic and ultramafic rocks that form the western boundary of the Eastern Goldfields geological terrane. The major structure in this belt is the Mt Ida Fault, a deep mantle tapping crustal suture that trends N-S and dips to the east. It marks the western boundary of the Kalgoorlie Terrane (~2.7 Ga) of the Eastern Goldfields Province against the Barlee Terrane (~3.0 Ga) of the Southern Cross Province to the west. To the east the belt is bounded by the Ballard Fault, a continuation of the strike extensive Zuleika Shear.</p>



Criteria	JORC Code explanation	Commentary
		<p>The Mt Ida belt is widely mineralised, predominantly with discordant vein gold deposits. Associated element anomalism typically includes copper and arsenic but neither have been identified in economic concentrations. There is some nickel sulphide mineralisation associated with the komatiite component of the supracrustal rocks, and the area includes a locally significant beryl deposit sporadically mined for emeralds. In the Riverina area the outcrop position of the Ida Fault is equivocal, and it is best regarded as a corridor of related structures with an axis central to the belt.</p> <p>The Riverina and First Hit Project area dominantly comprises metabasalts and metadolerites of tholeiitic parentage with lesser metagabbros and komatiites. Small post-tectonic granitoids intrude the sequence with locally higher-grade metamorphic conditions. Structurally, the dominant features are north-striking, east-dipping reverse faults and associated anastomosing strain zones. A conjugate set of late brittle structures striking NE and NW is also evident.</p> <p>The mineralisation exploited to date has typically been narrow mesothermal anastomosing veins. These frequently have strike and dip dimensions able to sustain small high-grade mining operations.</p> <p><u>Local Geology</u></p> <p>The local geology of the First Hit Project area comprises north striking ultramafics, komatiites and peridotites with some sediments in the eastern part of the block. To the west there is a metabasalt unit including a prominent gabbro and further west again more peridotite with amphibolite. The general strike trend drifts to the north-northwest then back to north. The sequence includes a small felsic intrusive west of the Emerald workings and a zone of felsic schists within the eastern ultramafics. Felsic intrusives occur in the northwest corner. The local strike fabric trends north then north-northeast.</p> <p>The First Hit mineralisation occurs as a quartz lode varying to 4m in thickness dipping at 70° to the east. The lode is hosted in biotite-carbonate schist within metabasalt and plunges to the south at around 50°. Numerous shafts, prospecting pits and costeans exist on the tenements and recorded production for the First Hit and First Hit North areas in the period 1930-1974 was ~7478 oz Au from 6091 tonnes mined. The First Hit North workings are 130m further to the north-northeast.</p> <p>References:            Wyche, S.1(1995). Geology of the Mulline and Riverina 1:100,000 Sheets. Geological Survey of Western Australia            Grey, A.R (2002) Annual Technical Reporting, 1 July 2000 to 30 June 2001, E30/193, M30/99, M30/118, P30/869, P30/894, Riverina 1:100,000 Sheet 3038 Barra Resources Limited</p>
<p><b>Drill hole Information</b></p>	<p>A summary of all information material to the understanding of the exploration results including a tabulation of the following information for all Material drill holes:</p> <ul style="list-style-type: none"> <li>• easting and northing of the drill hole collar</li> <li>• elevation or RL (Reduced Level - elevation above sea level in metres) of the drill hole collar</li> <li>• dip and azimuth of the hole</li> <li>• down hole length and interception depth</li> <li>• hole length.</li> </ul> <p>If the exclusion of this information is justified on the basis that the information is not Material and this exclusion does not detract from the understanding of the report, the Competent Person should clearly explain why this is the case.</p>	<p>A summary of the relevant drillhole information has been included in the body of the report and in the appendices.</p>

Personal use only



Criteria	JORC Code explanation	Commentary
<b>Data aggregation methods</b>	<p><i>In reporting Exploration Results, weighting averaging techniques, maximum and/or minimum grade truncations (e.g., cutting of high grades) and cut-off grades are usually Material and should be stated. Where aggregate intercepts incorporate short lengths of high-grade results and longer lengths of low grade results, the procedure used for such aggregation should be stated and some typical examples of such aggregations should be shown in detail.</i></p> <p><i>The assumptions used for any reporting of metal equivalent values should be clearly stated.</i></p>	<p>Significant assay results or aggregated intercept reporting have been completed at the cut-off grade stated where the aggregate is reported. No high-grade top-cut has been used.</p>
<b>Relationship between mineralisation widths and intercept lengths</b>	<ul style="list-style-type: none"> <li>• <i>These relationships are particularly important in the reporting of Exploration Results.</i></li> <li>• <i>If the geometry of the mineralisation with respect to the drill hole angle is known, its nature should be reported.</i></li> <li>• <i>If it is not known and only the down hole lengths are reported, there should be a clear statement to this effect (eg 'down hole length, true width not known').</i></li> </ul>	<p>The drilling programs at the North Duplex target and other prospects reported herein are variably oblique to the true width of mineralisation.</p> <p>All drill holes are reported as down hole widths as the true width cannot yet be accurately determined.</p> <p>Mineralisation is interpreted as steep dipping (near vertical), however no along strike information is available due to the lack of drilling.</p>
<b>Diagrams</b>	<p><i>Appropriate maps and sections (with scales) and tabulations of intercepts should be included for any significant discovery being reported These should include, but not be limited to a plan view of drill hole collar locations and appropriate sectional views</i></p>	<p>Drill plan and cross sections are provided in the body of the announcement.</p>
<b>Balanced reporting</b>	<p><i>Where comprehensive reporting of all Exploration Results is not practicable, representative reporting of both low and high grades and/or widths should be practiced avoiding misleading reporting of Exploration Results.</i></p>	<p>All drillhole data is reported on the cross sections provided and in the data tables in the appendix.</p>
<b>Other substantive exploration data</b>	<p><i>Other exploration data, if meaningful and material, should be reported including (but not limited to): geological observations; geophysical survey results; geochemical survey results; bulk samples - size and method of treatment; metallurgical test results; bulk density, groundwater, geotechnical and rock characteristics; potential deleterious or contaminating substances</i></p>	<p>All appropriate information is included in the report.</p>
<b>Further work</b>	<p><i>The nature and scale of planned further work (eg tests for lateral extensions or depth extensions or large-scale step-out drilling). Diagrams clearly highlighting the areas of possible extensions, including the main geological interpretations and future drilling areas, provided this information is not commercially sensitive.</i></p>	<p>Further work is described in the body of the report and includes remaining assays from the project, planned drilling programmes, auger drilling and magnetic geophysics data collection.</p>