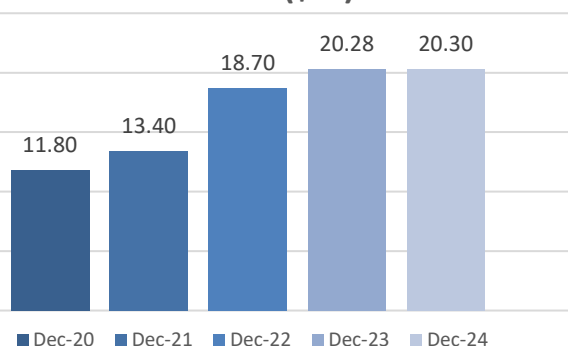
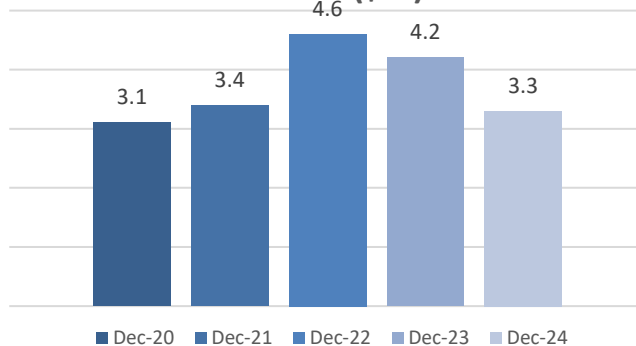


Profit or Loss	Dec 24	Dec 23	Dec 22	Dec 21	Dec 20
	\$,000's	\$,000's	\$,000's	\$,000's	\$,000's
Services revenue	\$ 13,067	11,188	9,691	5,776	5,446
Products revenue	\$ 6,291	8,673	8,939	7,501	6,332
Technology revenue	\$ 939	422	22	101	20
Revenue	\$ 20,297	20,283	18,652	13,378	11,798
Cost of sales	\$ (10,204)	(9,704)	(8,996)	(6,115)	(5,809)
Gross Profit	\$ 10,093	10,579	9,656	7,263	5,989
<i>Gross profit margin</i>	<i>% 49.7</i>	<i>52.2</i>	<i>51.8</i>	<i>54.3</i>	<i>50.8</i>
General administrative expenses (excl. interest, tax, depreciation & amortisation)	\$ (6,792)	(6,602)	(5,038)	(3,895)	(2,893)
EBITDA	\$ 3,301	4,198	4,618	3,368	3,096
<i>EBITDA Margin</i>	<i>% 16.3</i>	<i>20.7</i>	<i>24.8</i>	<i>25.2</i>	<i>26.2</i>
Depreciation & amortisation expense	\$ (1,566)	(1,702)	(1,612)	(1,287)	(1,175)
EBIT	\$ 1,735	2,496	3,006	2,081	1,921
<i>EBIT Margin</i>	<i>% 8.5</i>	<i>12.3</i>	<i>16.1</i>	<i>15.6</i>	<i>16.3</i>
Interest	\$ (408)	(336)	(266)	(218)	(223)
Profit before tax	\$ 1,327	2,160	2,740	1,863	1,698
<i>Profit before tax margin</i>	<i>% 6.5</i>	<i>10.6</i>	<i>14.6</i>	<i>13.9</i>	<i>14.4</i>
Income Tax Expense	\$ (287)	(472)	(740)	(341)	(510)
Profit after tax	\$ 1,041	1,689	2,000	1,522	1,188
<i>Profit after tax margin</i>	<i>% 5.1</i>	<i>8.3</i>	<i>10.7</i>	<i>11.4</i>	<i>10.1</i>
Basic and diluted earnings per share	c 0.89	1.53	1.83	1.57	1.24
Dividends for Period (cents)	c 0.4	0.8	0.8	0.6	0.6

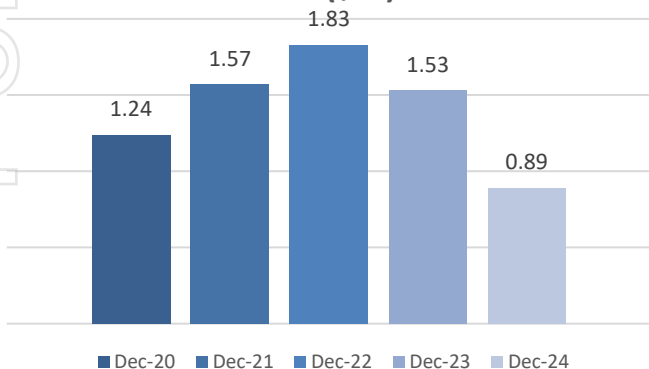
Revenue (\$m)



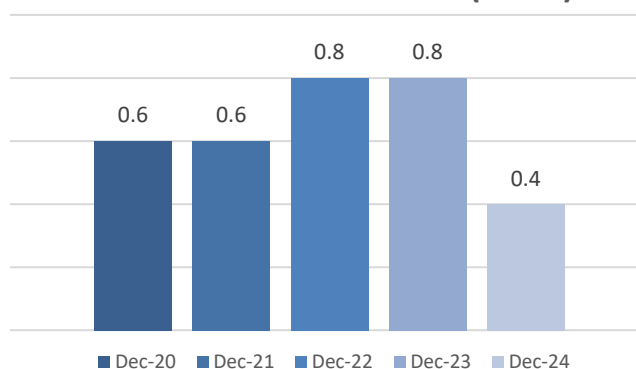
EBITDA (\$m)



EPS (\$m)



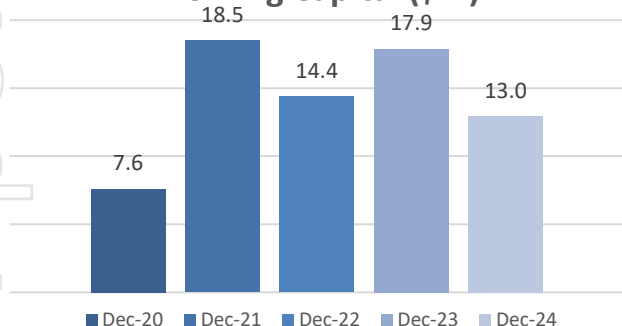
Dividends for the Period (cents)



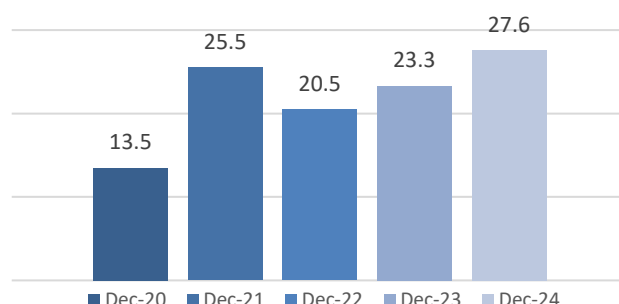
Balance Sheet

	Dec 24 \$,000's	Dec 23 \$,000's	Dec 22 \$,000's	Dec 21 \$,000's	Dec 20 \$,000's
Cash and cash equivalents	4,192	10,207	8,426	14,730	3,711
Trade and other receivables	11,127	8,870	7,788	6,755	4,501
Inventories	7,260	7,529	7,034	4,427	4,070
Current Tax Assets	-	-	-	769	-
Current Asset	22,579	26,606	23,248	26,681	12,282
Property, plant and equipment	19,224	20,596	18,160	13,575	13,523
Investment in Associates	10,648	-	-	-	-
Deferred tax assets	1,367	919	743	558	535
Intangible assets	6,552	6,510	6,537	146	78
Rental Bond	49	41	43	-	-
Non-Current Assets	37,840	28,066	25,483	14,279	14,136
Total Assets	60,419	54,672	48,731	40,960	26,418
Trade and other payables	3,000	3,955	3,998	4,101	1,284
Employee Benefits	2,620	2,362	2,099	1,723	1,449
Financial Liabilities	2,650	1,793	2,509	2,332	1,666
Current tax liabilities	1,359	561	488	-	302
Current Liabilities	9,629	8,671	8,865	8,156	4,701
Financial Liabilities	10,018	12,020	9,433	7,356	8,634
Deferred Tax Liabilities	1,710	1,641	1,390	586	-
Employee Benefits	268	222	124	73	70
Non-Current Liabilities	11,996	13,883	10,947	8,015	8,704
Total Liabilities	21,625	22,554	19,812	16,171	13,405
Net Assets	38,794	32,118	28,919	24,789	13,013
Issued Capital	24,686	19,021	18,512	16,960	7,205
Retained Earnings	14,108	13,097	10,407	7,829	5,808
Total Equity	38,794	32,118	28,919	24,789	13,013
Working Capital	12,950	17,935	14,383	18,525	7,581
Net Tangible Assets per share	27.59	23.27	20.46	25.48	13.51

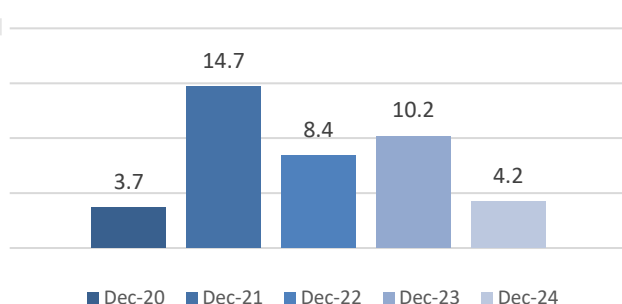
Working Capital (\$m)



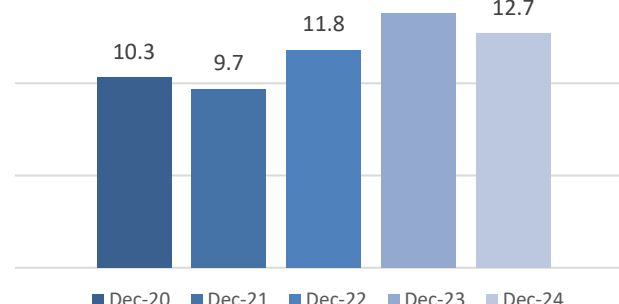
Net Tangible Assets per Share



Cash on Hand



Debt



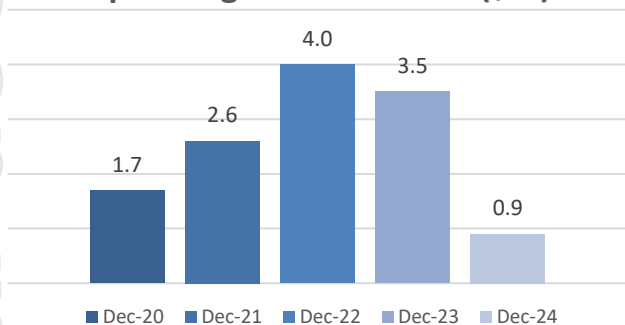
Cash Flows

	Dec 24 \$,000's	Dec 23 \$,000's	Dec 22 \$,000's	Dec 21 \$,000's	Dec 20 \$,000's
From Operating Activities	923	3,485	3,956	2,570	1,734
From Investing Activities	(449)	(658)	(162)	(749)	(1,233)
From Financing Activities	(2,041)	(1,550)	(1,052)	8,001	(788)
Change in Cash	(1,567)	1,277	2,742	9,822	(287)

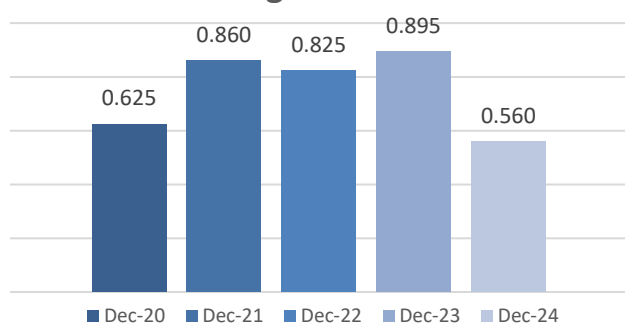
Other

Closing Share Price	0.560	0.895	0.825	0.860	0.625
---------------------	-------	-------	-------	-------	-------

Operating Activities Cash (\$m)



Closing Share Price



For personal use only