

21 February 2025 - ASX Announcement

Investor Presentation and Webinar

DeSoto Resources Limited (ASX:DES or 'Company') is pleased to provide and updated corporate presentation and extend an invitation to participate in an investor webinar.

The webinar follows the acquisition of a 1,234 km² land package with 14 gold **projects in Guinea's Siguiri Basin and three in the Gaoual Gold Belt, West Africa.**

Details and Registration

Event: DeSoto Resources Investor Webinar

Presenter: Managing Director, Chris Swallow, and Chair, Paul Roberts

Date: Tuesday 25 February 2025

Time: 11:30 – 12:30 AEDT

Where: Zoom Webinar details will be provided upon registration. Click the link below to register

Registration link: https://us02web.zoom.us/webinar/register/WN_WkELkopoTbSG0UCOpGiWZw

Upon registering, you'll receive a confirmation email with access details. The session will conclude with a Q&A segment, where participants are encouraged to submit questions either throughout the presentation via the panel or in advance by emailing thehouse@calderahouse.com.au.

A recording of the webinar will be available on DeSoto's website and social media accounts following the event.

-END-

This release is authorised by the Board of Directors of DeSoto Resources Limited.

For further information visit our website at Desotoresources.com or contact:

Chris Swallow
Managing Director
P: +61 412 174 882
E: cs@desotoresources.com

For personal use only



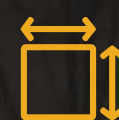
FEBRUARY 2025 | DESOTORESOURCES.COM | ASX:DES

Acquisition of high-grade gold projects in **Guinea's** Siguiiri Basin

One of West Africa's most accomplished exploration teams returns to the Siguiiri Basin



Guinea's Siguiiri Basin



Dominant Land Position



Drilling imminent



Elephant Country

Important Notices & Disclaimer



DeSoto Resources Limited ACN 658 510 242 (DeSoto or the Company) is the issuer of this presentation. The issue of this presentation is intended only for the person or entity to which it has been transmitted.

These presentation materials and any accompanying verbal presentation (together, the Presentation Materials) have been prepared by DeSoto Resources Limited (Company) as at 29 May 2024 and statements are current only as at that date. Information in the Presentation Materials remains subject to change without notice. The Company has no responsibility or obligation to inform you of any matter arising or coming to its notice, after the date of this document, which may affect any matter referred to in this document. By receiving the Presentation Materials, you acknowledge and represent to the Company that you have read, understood and accepted the terms of this disclaimer. It is the responsibility of all recipients of these Presentation Materials to obtain all necessary approvals to receive these Presentation Materials and receipt of the Presentation Materials will be taken by the Company to constitute a representation and warranty that all relevant approvals have been obtained.

Confidential Information

The Presentation Materials are strictly confidential and are intended for the exclusive benefit of the persons to whom they are given. The Presentation Materials may not be reproduced, disseminated, quoted or referred to, in whole or in part, without the express written consent of the Company. By receiving this document, you agree to keep the information confidential, not to disclose any of the information contained in this document to any other person and not to copy, use, publish, record or reproduce the information in this document without the prior written consent of the Company, which may be withheld in its absolute discretion.

Not an Offer

These Presentation Materials are for information purposes only. The Presentation Materials do not comprise a prospectus, product disclosure statement or other offering document under Australian law (and will not be lodged with the Australian Securities and Investments Commission) or any other law. The Presentation Materials also do not constitute or form part of any invitation, offer for sale or subscription or any solicitation for any offer to buy or subscribe for any securities nor shall they or any part of them form the basis of or be relied upon in connection therewith or act as any inducement to enter into any contract or commitment with respect to securities. In particular, these Presentation Materials do not constitute an offer to sell or a solicitation to buy, securities in the United States of America.

Not Investment Advice

The Presentation Materials are not investment or financial product advice (nor tax, accounting or legal advice) and are not intended to be used for the basis of making an investment decision. Recipients should obtain their own advice before making any investment decision.

Summary Information

The Presentation Materials do not purport to be all inclusive or to contain all information about the Company or any of the assets, current or future, of the Company. The Presentation Materials contain summary information about the Company and its activities which is current as at the date of the Presentation Materials. The information in the Presentation Materials is of a general nature and does not purport to contain all the information which a prospective investor may require in evaluating a possible investment in the Company or that would be required in a prospectus or product disclosure statement or other offering document prepared in accordance with the requirements of Australian law or the laws of any other jurisdiction, including the United States of America.

While reasonable care has been taken in relation to the preparation of the Presentation Materials, none of the Company or its directors, officers, employees, contractors, agents, or advisers nor any other person (Limited Party) guarantees or makes any representations or warranties, express or implied, as to or takes responsibility for, the accuracy, reliability, completeness or fairness of the information, opinions, forecasts, reports, estimates and conclusions contained in this document. No Limited Party represents or warrants that this document is complete or that it contains all information about the Company that a prospective investor or purchaser may require in evaluating a possible investment in the Company or acquisition of shares in the Company. To the maximum extent permitted by law, each Limited Party expressly disclaims any and all liability, including, without limitation, any liability arising out of fault or negligence, for any loss arising from the use of or reliance on information contained in this document including representations or warranties or in relation to the accuracy or completeness of the information, statements, opinions, forecasts, reports or other matters, express or implied, contained in, arising out of or derived from, or for omissions from, this document including, without limitation, any financial information, any estimates or projections and any other financial information derived therefrom.

Forward-looking statements

Certain statements contained in the Presentation Materials, including information as to the future financial or operating performance of the Company and its projects, are forward looking statements. Such forward looking statements involve known and unknown risks, uncertainties, assumptions and other important factors, many of which are beyond the control of the Company and which may cause actual results, performance or achievements to differ materially from those expressed or implied by such statements. Forward looking statements are provided as a general guide only, and should not be relied on as an indication or guarantee of future performance. Given these uncertainties, recipients are cautioned to not place undue reliance on any forward looking statement. Subject to any continuing obligations under applicable law the Company disclaims any obligation or undertaking to disseminate any updates or revisions to any forward looking statements in this document to reflect any change in expectations in relation to any forward looking statements or any change in events, conditions or circumstances on which any such statement is based.

JORC Disclaimer

The Presentation Materials are not a "public report" for the purposes of 2012 Edition of the 'Australasian Code for Reporting of Exploration results, Mineral Resources and Ore Reserves' (JORC Code). As such, the information in this Presentation Materials that relate to exploration results, exploration targets, mineral resources and ore reserves is not reported in accordance with the JORC Code and has not been reviewed by a competent person for the purposes of the JORC Code.

The Company confirms that it is not aware of any new information as at the date of the Presentation Materials that materially affects the information included in the Presentation Materials and that all material assumptions and technical parameters underpinning the estimates in the Company's previous announcement[s] continue to apply and have not material changed.

Competent Persons Statement

The information in this report that relates to exploration results is based on and fairly represents information and supporting documentation prepared by Mr Nick Payne.

Mr Payne is an employee of the company, is a member of the Australian Institute of Geoscientists and has sufficient experience of relevance to the styles of mineralisation and types of deposits under consideration, and to the activities undertaken to qualify as Competent Persons as defined in the 2012 Edition of the Joint Ore Reserves Committee (JORC) Australasian Code for Reporting of Exploration Results, Mineral Resources and Ore Reserves. Mr Payne consents to the inclusion in this report of the matters based on this information in the form and context in which they appear.

One of West Africa's most accomplished teams returns to the Siguiri Basin

Dominant 1,234km² portfolio 14 Projects in Guinea's Siguiri Basin

Guinea's Golden Team

PDI's Former Founder & MD, Chief Geologist, Principal Geologist & Corporate Development

Money in the Ground Immediate drilling in Guinea and the NT

Historic high-grade & shallow drill hits

- NDI-02
18m @ 11.8 g/t Au (48m)
incl. 1m @ 78.84 g/t Au (50m)
3m @ 40.4 g/t Au (62m)
- NDI-39
4m @ 10.6 g/t Au (33m)
- NDI-15
1m @ 54.1 g/t Au from 5m
- NDI-11
1m @ 4.37 g/t Au from 11m

GUINEA

SIGUIRI BASIN

Guinea's Siguiri Basin

- DeSoto Projects
- Siguiri Basin
- >10 Moz Au Project
- 5 - 10 Moz Au Project
- <5 Moz Au Project
- Major Discovery

ANGLOGOLD ASHANTI NYSE:AU
Siguiri Mine
 Mineral Resource **6.2Moz**
 Mineral Reserve* **3.0Moz**

Managem MNG:CAS
Tri-k Mine
 Mineral Resource **2.3Moz**
 Mineral Reserve **1.5Moz**

nordgold LSE:NORD
Lefa Mine
 Mineral Reserve **7.9Moz**

predictive discovery ASX:PDI
Bankan Deposit
 Mineral Resource **5.4Moz**

HUMMINGBIRD RESOURCES LON:HUM
Kouroussa Mine
 Mineral Resource **5.4Moz**
 Mineral Reserve **650Koz**

DESOTO RESOURCES
 Acquired Gold Projects

Newmont AWALÉ
Odienné Project
 Recent Discovery

Corporate Overview

Shareprice (19 th Feb 24)	\$0.105
Shares on issue	92.5M
Options listed:	DESO - 44M @ 0.25c
Options Unlisted	33.9M @ 0.25c, 1.6M @ 0.35c & 1.6M @ 0.23c
Market Capitalisation	\$9.7m
Enterprise Value	\$5.6m
Cash (31 st Dec 2024)	\$4.1m

Major Shareholders

Board & Management	~14%
Hugh Business Enterprises major producer of cathode materials	~19%
Founders	~13.7%
Rock the Polo Pty Ltd	~3.5%
Lowell Resource Fund	~1.1%

THE LEADERS IN WEST AFRICAN GOLD DISCOVERY



Paul Roberts
Non-Executive Chairman

Founder of Predictive Discovery Limited (ASX:PDI) responsible for discovery of the 5.4Moz Bankan Gold Project in Guinea, the Henty gold deposit and major extensions to the St Dizier tin deposit (both in Tasmania).



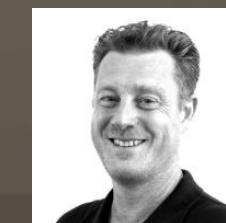
Chris Swallow
Managing Director

Previously the Corporate Development Officer for Predictive Discovery (ASX:PDI), Chris was also previously CEO at BPM Minerals and is currently a Non-Executive Director of Lord Resources (ASX:LRD).



Dr Barry Murphy
Non-Executive Director

A structural geologist with more than 20 years experience working in West Africa, Barry played a major role in the regional targeting work that led to the Bankan Discovery.



Nick Payne
Exploration Manager – Australia/Brazil

Nick Payne has over 25 years' experience as a Geologist with extensive exploration and mining experience in Australia, Canada and the USA, and significant experience in the Pine Creek region of the Northern Territory.



Aime Nganare
Exploration Manager – Africa

Responsible for identifying the Projects DeSoto has acquired in Guinea. Aime was formally the principal geologist for Predictive Discovery with over 18 years of orogenic gold exploration experience in West Africa.

West African Birimian Greenstone Belt

ONE OF THE **WORLD'S** MOST PROLIFIC YET UNDER EXPLORED GOLD MINING REGIONS

Guinea's Siguiri Basin

- DeSoto Projects
- Siguiri Basin
- Birimian Greenstone Belt
- Gold Mine or Near Development

One of the largest gold producing regions in the world

Between 2010 and 2020, West African Gold plays unearthed 67Moz of gold at 1.5 g/t Au from 15 major discoveries¹

Host to many multi-million ounce gold deposits

Home to 3 of top 5 gold producing countries in Africa²

Majority of Birimian-hosted gold deposits occur in 10-15km wide corridors, representing the transition between volcanic and sedimentary lithologies, characterized by regionally extensive shear zones



Hunting for gold in elephant country

14 Projects in the prolific Siguiiri Basin, home to:

AngloGold **Ashanti's**

Siguiiri mine (6.2Moz Au)

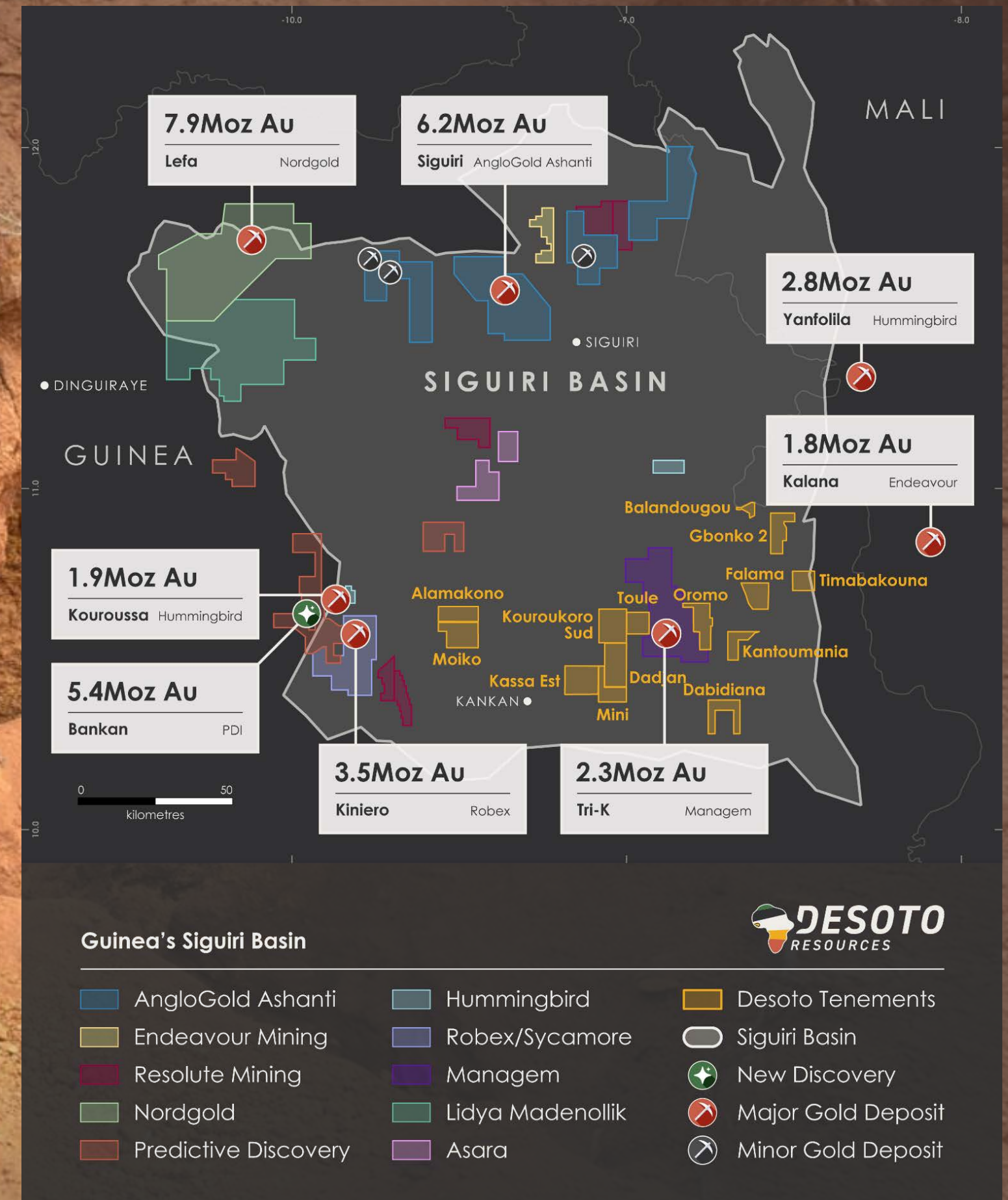
Nordgold

Lefa mine (7.9Moz Au)

Predictive Discovery (PDI)

Bankan Project (5.4Moz Au)


Properties identified by former PDI Principal Geologist Aime Nganare, now DeSoto Exploration Manager, French speaking, Africa-based



Guinea: An Emerging Mining Power House



- ➔ Attracting major global investment for a rapidly expanding mining industry
- ➔ Simandou is the largest mining project in construction globally at >US\$21B¹
- ➔ Uninterrupted mining by global groups for over 40 years

650KM Highway 

Extensive upgrades to the 650 km long highway connecting the capital of Conakry to the gold mining district

670KM Rail Line 

Co-development of a 670 km long rail line between Government & Industry to connect the iron ore district to a deep water port on Atlantic coast

Mining is a nationally significant industry²:

18%	30%	78%	31%
Economy	Government Revenues	Export Revenue	GDP

Est mining code & fiscal regime
 Royalty of 5% + a 1% contribution to local development
 Corporate tax rate of 30%
 State entitled to 15% free carry

\$6.2 Billion 

Rio Tinto committed US \$6.2B in early 2023. This investment is part of the development of the world's largest untapped high-grade iron ore deposit

Siguiri Portfolio: 14 prospective greenfield gold projects

Siguiri Basin: a world-class gold district, host to several operating mines and major new discoveries

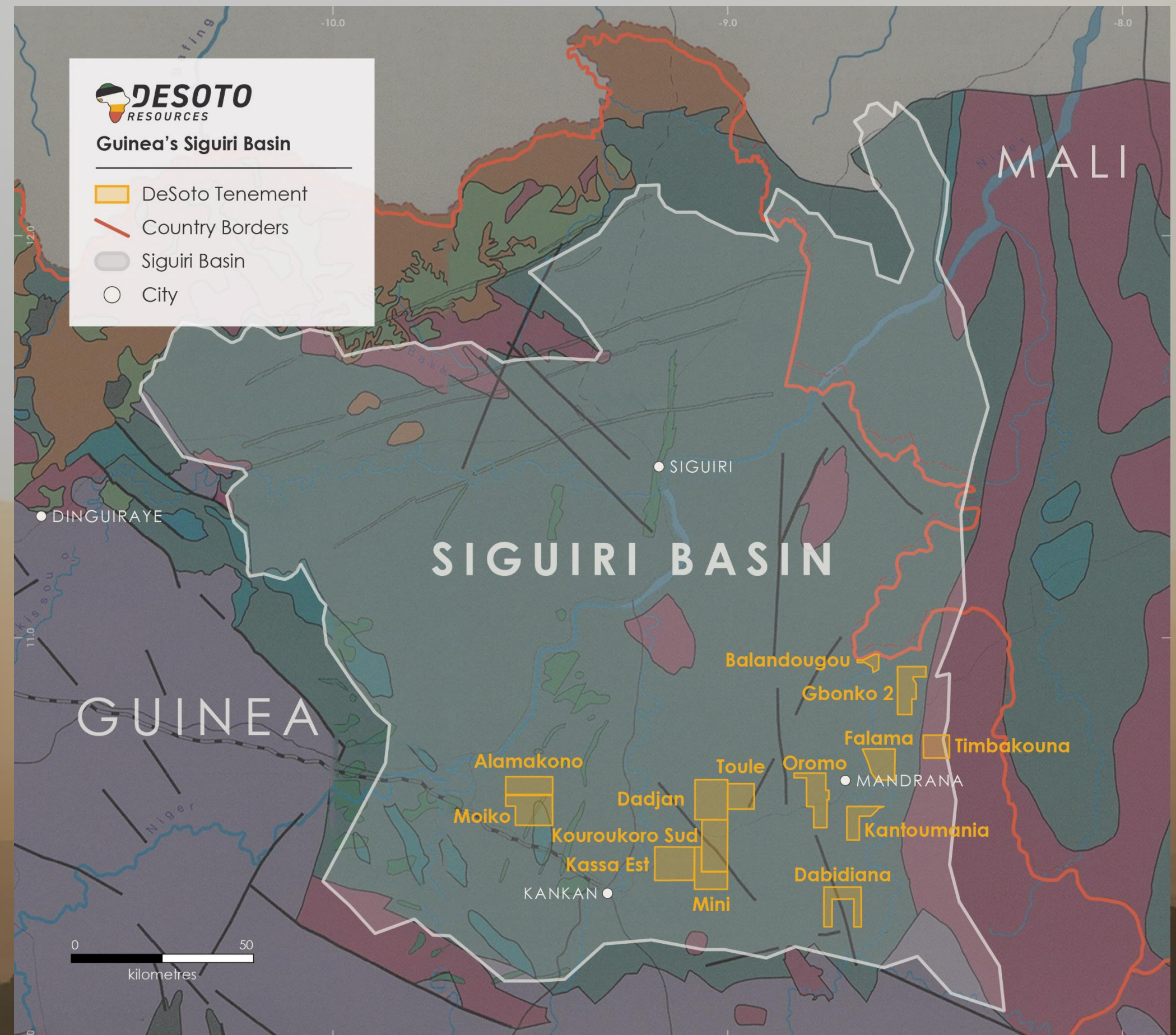
Gold mineralisation in the Siguiri structurally controlled and related to multi-phase deformation

934km² ground position in the Siguiri Basin

Timbakouna: 6km of unexplored strike with associated artisanal workings

Kantoumania: strong gold-in soil anomalism

Exploration underway



Timbakouna Project

Large untested N-S gold trends

6km of strike covered by artisanal workings

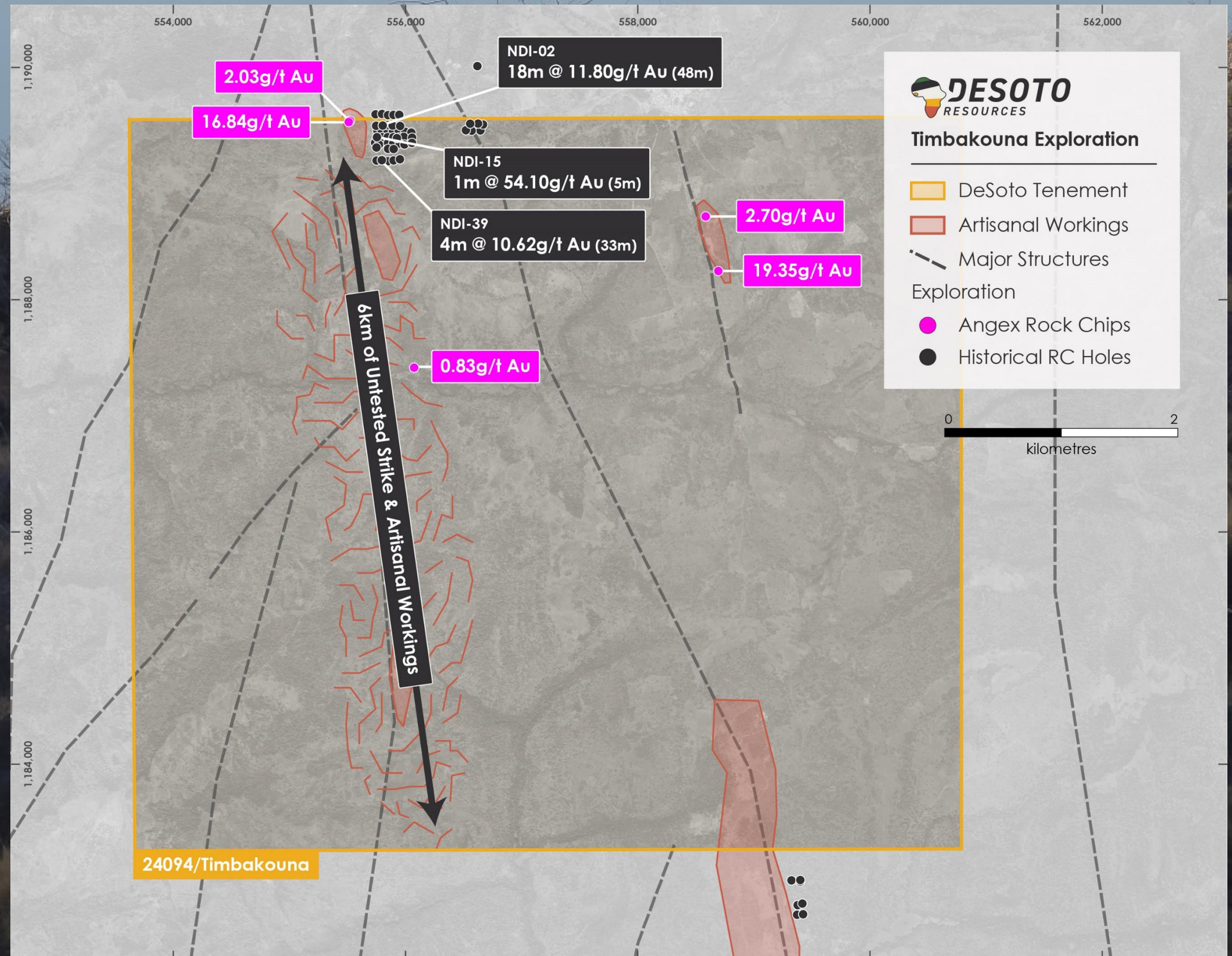
Historic drilling limited to the NE corner returned high-grade gold¹:

- 18m @ 11.8 g/t Au from 48m (NDI-02), incl.
 - 1m @ 78.84 g/t Au from 50m, and
 - 3m @ 40.4g/t Au from 62m
- 4m @ 10.6 g/t Au from 33m (NDI-39)
- 1m @ 54.1 g/t Au from 5m (NDI-15)
- 1m @ 4.37 g/t Au from 11m (Hole NDI-11)

No drilling >80m or into the fresh rock, confined to the northern boundary

Reconnaissance exploration underway

Drilling as soon as exploration permit granted



SIGUIRI PROJECTS

Timbakouna:
6km of untested
NS strike



DeSoto Exploration Manager (Africa)
Aime Nganare sampling one of the
major artisanal open pits



SIGUIRI PROJECTS

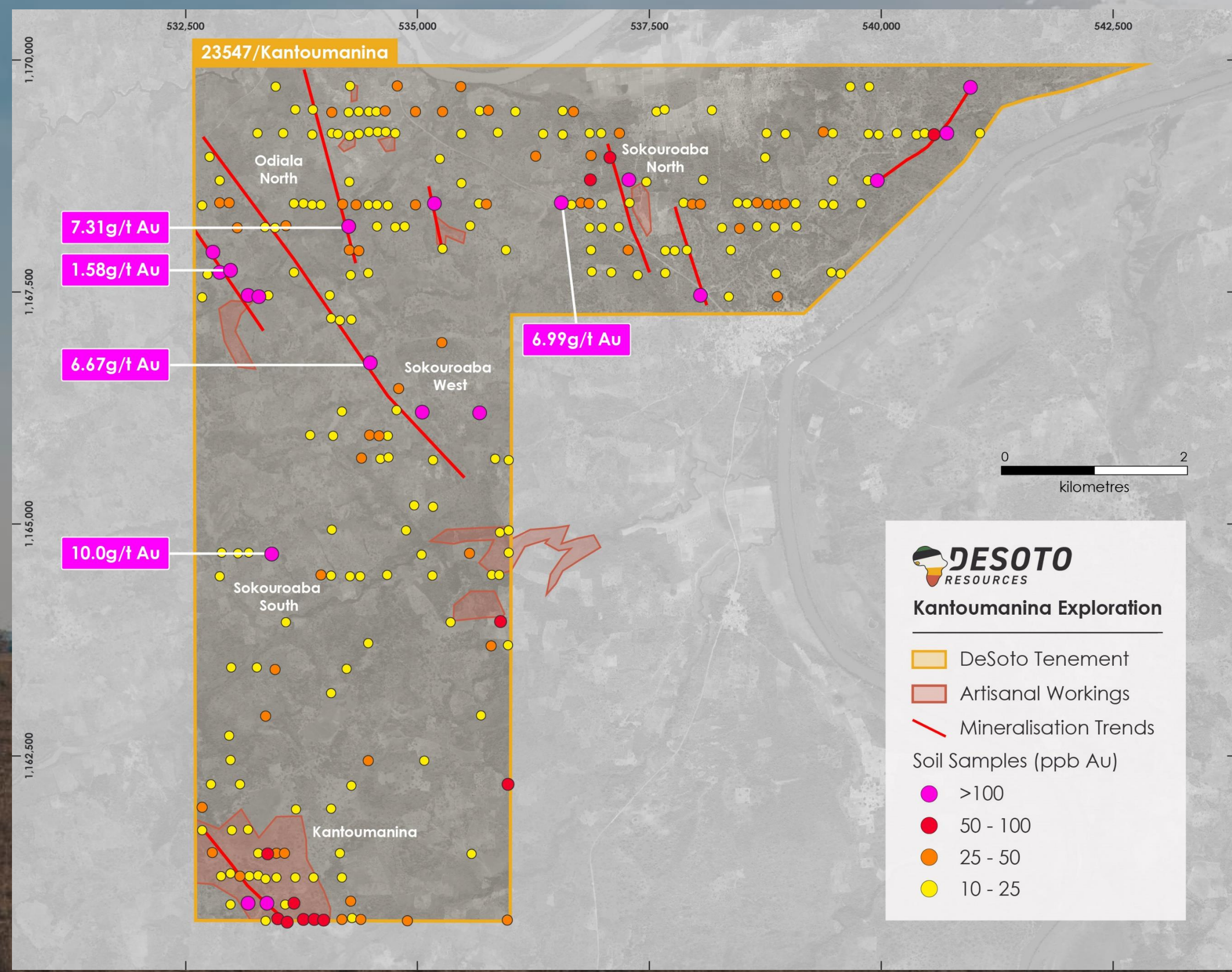
Kantoumanina Project

Positive results from soil geochemistry located 20km south-west of Timbakouna, including (max values) ¹:

- >10 g/t Au (Sokouroaba South)
- 7.31 g/t Au (Odiala North)
- 6.99 g/t Au (Sokouroaba North)

Mostly NNW anomalism trends interpreted from soil geochemistry results.

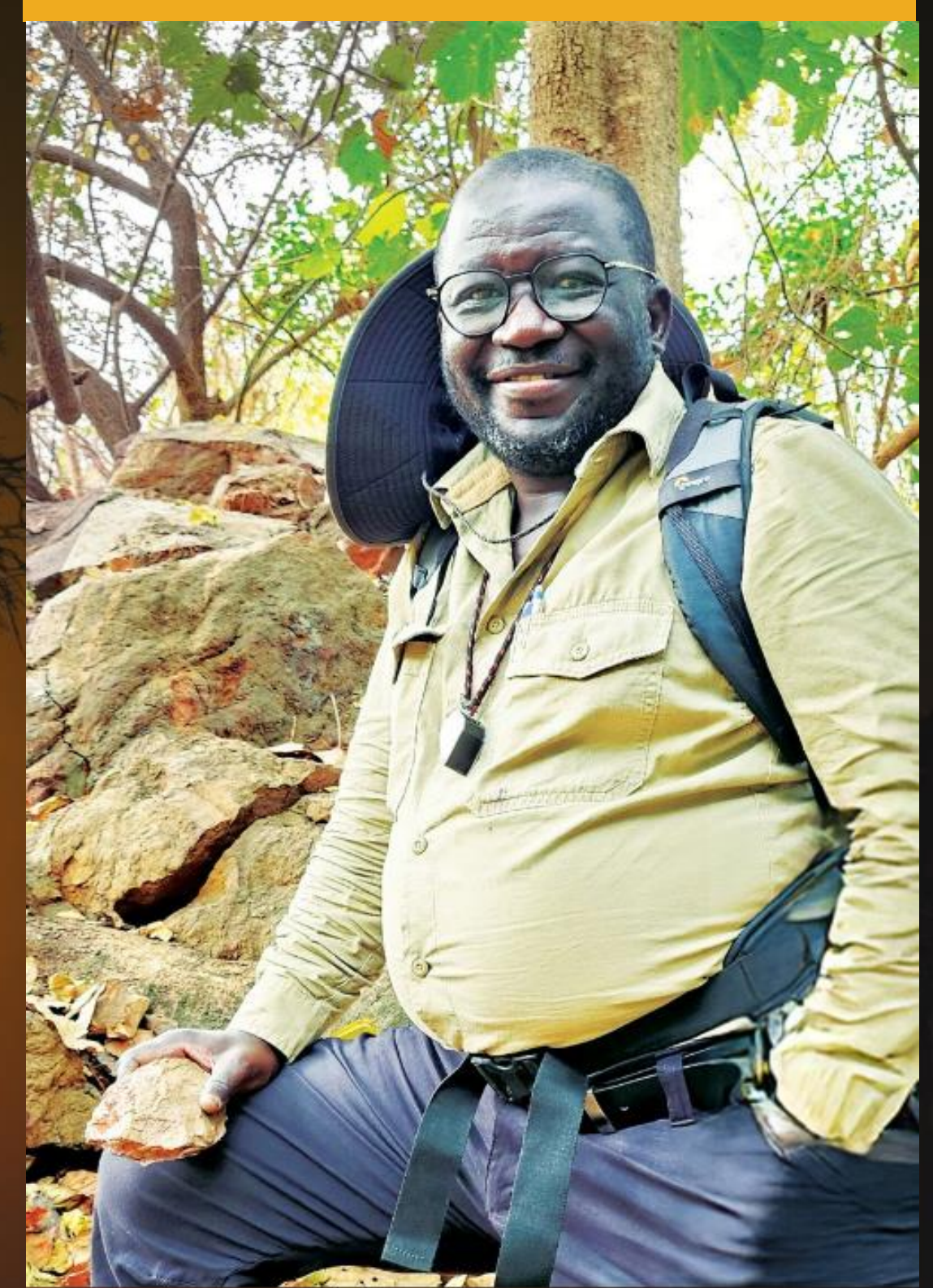
Follow up trenching compromised by thick laterite caps. **Auger and RC drilling to define and test gold zones**



¹ASX Announcement: Desoto acquires high-grade gold projects in Guinea's Siguiri Basin (20th February 2025)

Strategic approach to gold discovery

- The Siguri Basin is both strongly gold-mineralised and very underexplored
- Minerals system approach
Rolling out broad scale structural targeting across the portfolio
- Effective geochemistry
bulk leach extractable gold (BLEG)
stream sediment, soil geochemistry
& power auger to begin immediately
- Gold Anomalies
Gold halo's to be targeted with
trenching, channel sampling,
Air Core, RC and DD drilling



Aime Nganare Exploration Manager

The beginning of a golden dawn



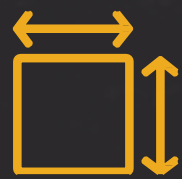
Immediate Impact

Drilling to commence in the Siguiiri as soon as acquisition is completed with work programs already underway



West African specialists

Experienced Board, Management and in-country team ready to find the next Bankan



Dominant land position

1,234km² gold portfolio with a mixture of greenfields and existing discoveries



Well funded for discovery

\$8.7 million cash balance to drive exploration at the Siguiiri & NT Projects

Newsflow Catalysts

- 5,000m Power Auger drill program to commence imminently
- Soil geochemistry Bulk Leach Extractable Gold (BLEG) stream sediment, soil geochemistry to be rolled out across the portfolio.
- Broad scale structural targeting across the portfolio Minerals system approach
- **Identifying Gold Halo's**
To be targeted with trenching, channel sampling, Air Core, RC and DD drilling

One of West Africa's most accomplished gold exploration teams, responsible for **Predictive Discovery's 5.4Moz** Bankan Gold **Discovery returns to Guinea's** Siguiiri Basin with more than 1,200km² of exploration ground, and existing high-grade drill intercepts providing walk-up targets.

– Managing Director Chris Swallow

For personal use only

FEBRUARY 2025 | DESOTORESOURCES.COM | ASX:DES

FOR FURTHER INFO
PLEASE CONTACT



Chris Swallow
Managing Director

E: cs@desotoresources.com
P: +61 412 174 882



Guinea's Siguiiri Basin



Dominant Land Position



Drilling imminent



Elephant Country

For personal use only



Other Projects

SAFETY
FIRST
THINK SAFE
WORK SAFE
BE SAFE

Other Projects

UNMATCHED EXPLORATION POTENTIAL IN TWO PREMIER CRITICAL MINERALS HOTSPOTS

Northern Territory, Australia

Project Overview:

REE-gold-copper potential

Commanding land position covering one of Australia's last great underexplored mineralised shear zones

Advanced targets

Drilling H1 2025



Minas Gerais, Brazil

Project Overview:

Large, high-grade manganese carbonate Resource

DES to pursue the production of battery-grade manganese sulphate

Brazil the fastest growing EV market globally

Manganese-rich cathode chemistry the emerging EV battery winner

Currently completing DD

Spectrum Project, Northern Territory (DES earning into 70%)

Shear-hosted REE-Au-Cu
potential across one of
Australia's great
underexplored mineralised
shear zones



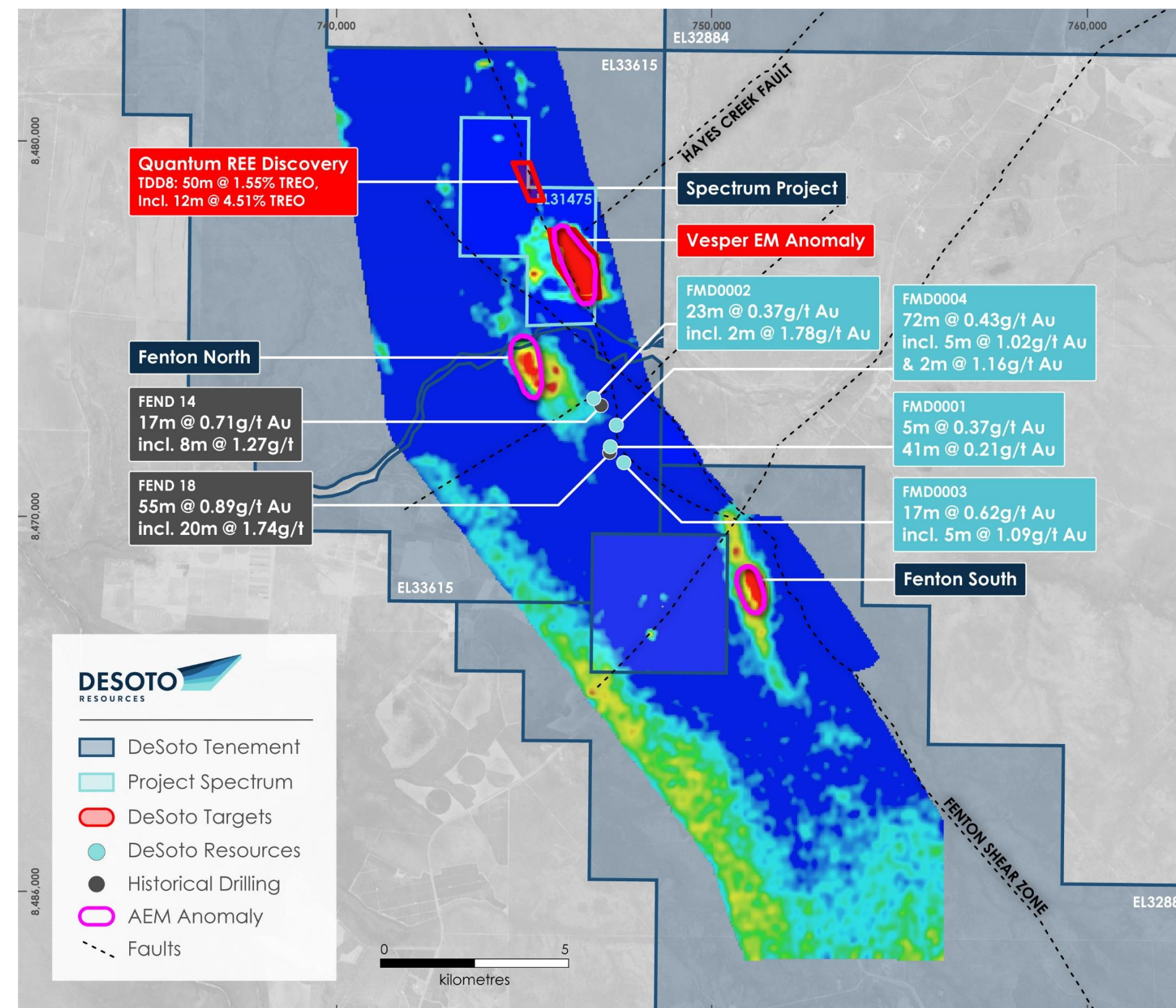
Fenton Shear Zone



REGIONAL-SCALE STRUCTURE HOSTING THE SPECTRUM & FENTON PROJECTS

History of the Fenton Shear Zone

- Large regional-scale shear zone with targets under cover
- 1990's Limited drilling by Homestake Australia targeting 40Moz Lead-style gold deposit
- 1997 Homestake: 55m @ 0.89g/t Au, including 20m @ 1.74g/t Au (FEND 18)
- 2010-11 Territory Uranium Quantum REE discovery: 50m @ 1.55% TREO, incl. 12m @ 4.51% TREO and 0.50 g/t Au from 247m (TDD8)
- 2023 DES drilled 72m @ 0.43g/t Au, incl. 5m @ 1.02g/t Au from 528m (FMD0004)– not assayed for REE
- 2023 DES AEM Survey picked out Spectrum Project EM conductor, incl. Quantum REE discovery
- June 2024: DES acquires Spectrum
- 2024 DES geophysical program outlines EM conductors at Vesper + MMI survey confirms 8km-long copper-in-soil anomaly
- 2024 DES fully permitted for a 23-hole Program H1 2025



Spectrum Project

8KM-LONG COPPER-IN-SOIL ANOMALY OVERLAYING EM CONDUCTORS & HISTORIC REE DISCOVERY

Project Background

DES acquired Spectrum Project May 2024

Strategically located inside existing Fenton Project

Vesper target: 8km-long untested copper-in-soil anomaly

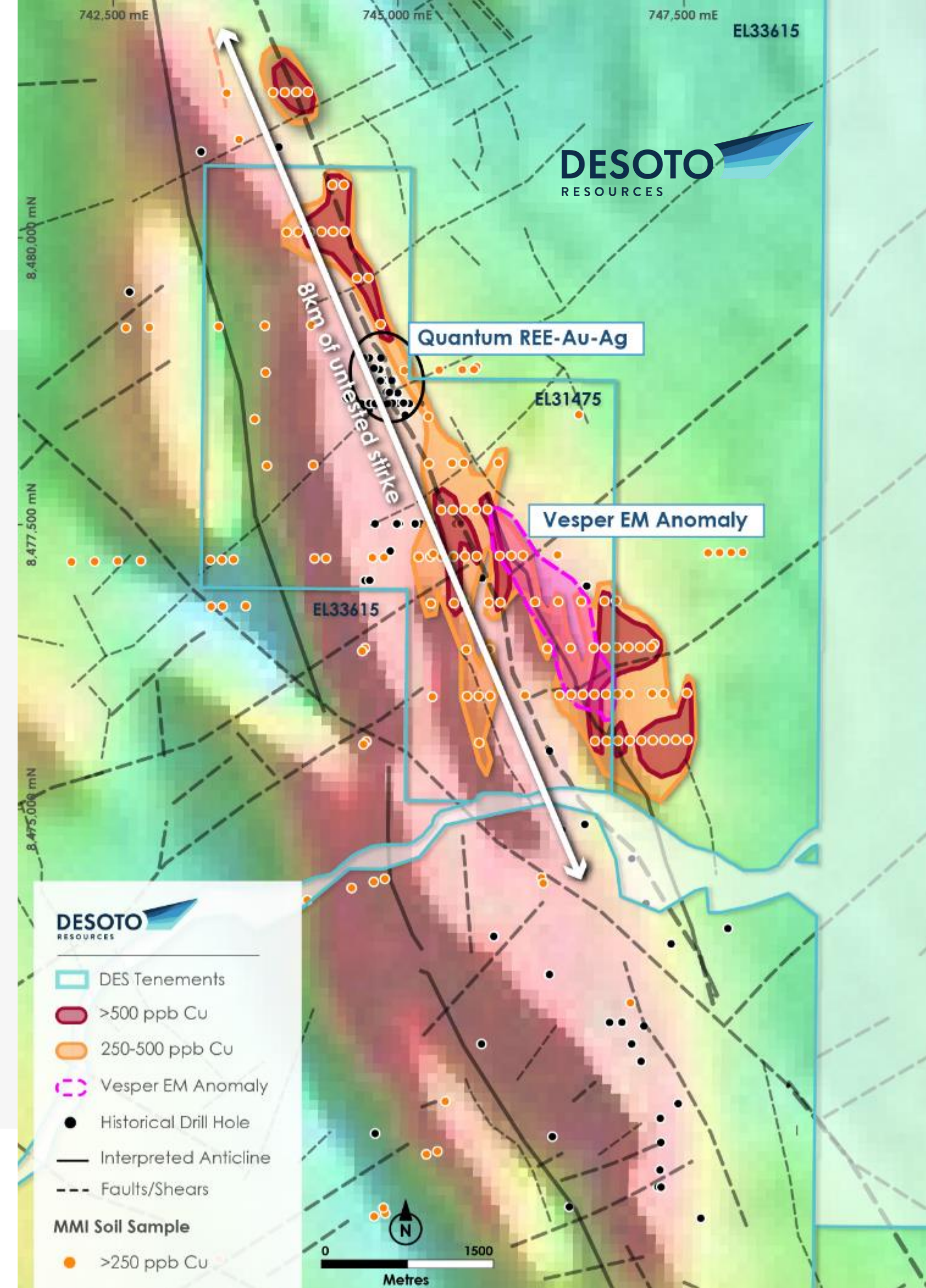
Quantum target: historic high-grade REE discovery

REE's were discovered before critical mineral designation

DES 2023 AEM survey highlighted Vesper as the most significant EM anomaly in the region

Takeaway

8km of untested copper strike with REE-Au-Cu potential



Geophysics Drives Discovery



DES COMPLETES REGIONAL SCALE GEOPHYSICS ACROSS FENTON SHEAR ZONE

2023 geophysical surveys

2023 NT Government co-funded AEM survey

18 priority bedrock conductivity anomalies identified up and down the Fenton Shear*

Importantly, Spectrum Project highlighted, including two mineralised targets:

- Vesper target:
Very strong EM anomaly associated with historical Cu-in soil MMI anomaly
- Quantum target:
Well-defined & discrete EM anomaly associated with historic REE Discovery

Takeaway

Geophysics identified the Spectrum Project



Geophysics Driving Discovery

2024 GEOPHYSICAL SURVEYS



2024 surveys deliver targets for 2025 drilling

Geophysics targeted REE-Au-Cu mineralised zones associated with sulphide alteration

FLEM & IP survey confirmed 4 discrete AEM basement conductors and 6 new chargeable anomalies that may represent accumulation of massive, disseminated or vein hosted sulphides

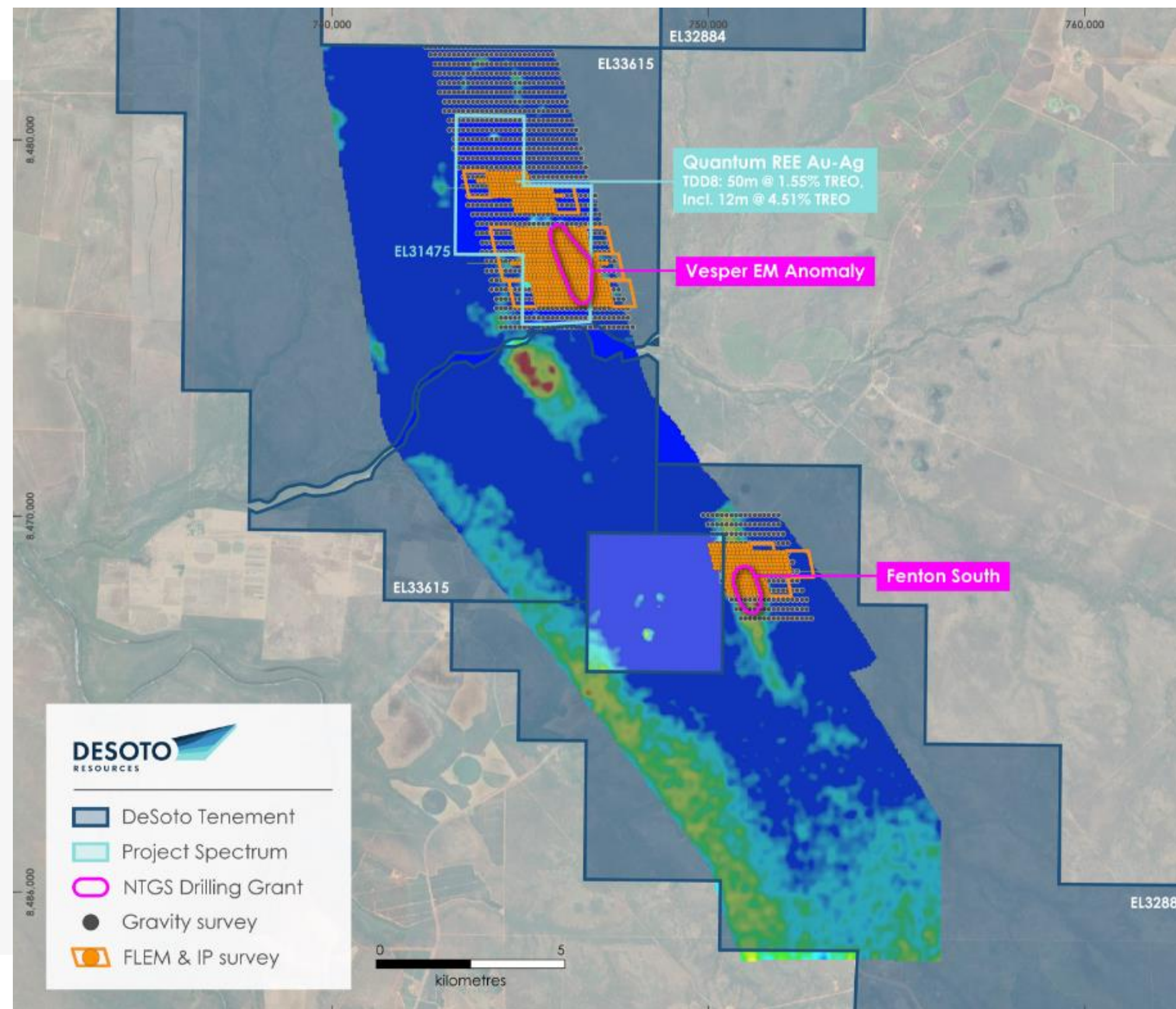
Vesper :
13.5-line km of 2D pole-dipole induced polarisation and 77- line km of fixed loop electromagnetics collected across 11 transmitter loops

Quantum :
2x loops of FLEM and one 2D profile of induced polarisation

Fenton South :
3x loops of FLEM and 1 x 2D profile of IP

Takeaway

Geophysics delivered 10 targets for 2025 drilling program¹



¹ASX Announcement: High priority geophysical targets identified for immediate drill testing (13th Sept 2024)

Vesper Target



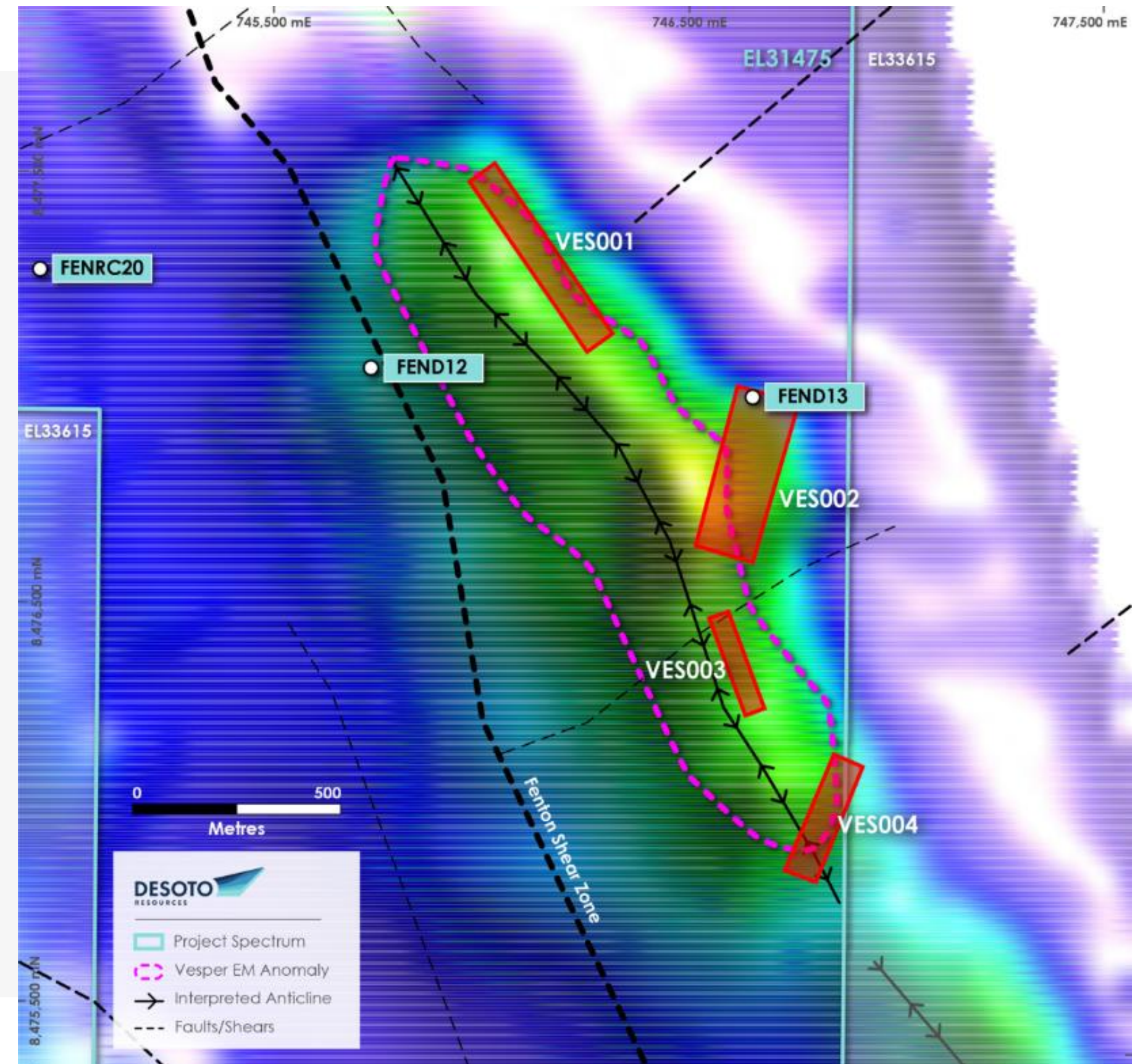
ALL THE HALLMARKS OF A LARGE COPPER BASE-METALS SYSTEM

Big opportunity for a major discovery

- 4 x Large, shallow and untested EM and magnetic anomalies
- 8km-long copper-in-soil anomaly overlays the 4 conductor targets
- Located 1.5km south from the REE Spectrum prospect
- Potential for Vesper & Quantum to be part of same system
- Well-defined "twin-peak" anomaly in mid to late time channels

Takeaway

Untested EM targets supported by 8km-long copper-in-soil anomaly





Quantum REE Discovery



HIGH-GRADE HISTORIC REE INTERSECTIONS A STRONG WALK-UP EXPLORATION TARGET*

HoleID	TREO*	Au	Ag
TDD8	50m @ 1.55% TREO from 245m incl. 12 @ 4.51% TREO from 246m 32m @ 0.38% TREO from 389m	13m @ 0.49 g/t Au from 247m 8m @ 0.13 g/t Au from 277m 3m @ 0.75 g/t Au from 290m 2.8m @ 0.29 g/t Au from 305m	13m @ 1.78 g/t Ag from 247m 9m @ 1.3 g/t Ag from 277m 3m @ 0.73 g/t Ag from 290m 2.8m @ 1.5 g/t Ag from 305m
TDD9	2.3m @ 2.75% TREO from 374m	2m @ 0.28 g/t Au from 375m	16.2m @ 1.11 g/t Ag from 365m
TDD10	21.9m @ 2.55% TREO from 276m incl. 9.2m @ 3.78% TREO from 288m	2.8m @ 0.33 g/t Au from 206m 6.4m @ 0.38 g/t Au from 276m 11m @ 0.85 g/t Au from 286m	5.2m @ 73.50 g/t Ag from 225m 17m @ 1.08 g/t Ag from 276m
TDD11	8.1m @ 1.4% TREO from 331m	4.2m @ 0.61 g/t Au from 330m	9.8m @ 0.79 g/t Ag from 330m
TDD12	1.6m @ 2.48% TREO from 354m	1.6m @ 1.57 g/t Au from 324m	20m @ 5.42 g/t Ag from 102m
TDD13	5.3m @ 1.58% TREO from 249m 6m @ 0.85% TREO from 306m	5.3m @ 0.56 g/t Au from 249m 3.2m @ 0.22 g/t Au from 251m 5.9m @ 0.21 g/t Au from 304m	19.6m @ 0.75 g/t Ag from 251m
TDD16			4.3m @ 6.66 g/t Ag from 275m
TDD18	4.5m @ 1.10% TREO from 367m	4.5m @ 0.90 g/t Au from 367m	
TDD19	17m @ 1.0% TREO from 254m incl. 1m @ 6.42% TREO from 254m 3.2m @ 3.04% TREO from 296m	17m @ 0.19 g/t Au from 254m 5.4m @ 0.49 g/t Au from 295m	11m @ 1.00 g/t Ag from 261m 3.2m @ 0.79 g/t Ag from 296m
TDD20	8.3m @ 1.01% TREO from 297m incl. 2.4m @ 2.97% TREO from 297m	1.4m @ 0.31 g/t Au from 297m	12m @ 1.62 g/t Ag from 292m



DeSoto Non-Executive Director Dr. Barry Murphy inspecting core from the Fenton Project

*ASX Announcement: Acquisition of high-grade rare earths project in the NT (29th May 2024)

For personal use only

Forward Program

DRILLING H1 2025

The most exciting greenfields exploration opportunity in the NT

- Drill targeting completed
- Fully permitted 23-hole program H1 2025
- Drilling to target Vesper and Quantum targets



Right Geology & Mineralisation

PINE CREEK REGION



Geology

Hosted within the Pine Creek Geosyncline which is a mid-Proterozoic sequence of marine sediments intruded by a suite of granites

Regionally, known mineralisation primarily hosted within Pine Creek Shear

Pine Creek Project located on parallel structural corridor to the Pine Creek Shear Zone, partially under cover, known to be gold mineralised

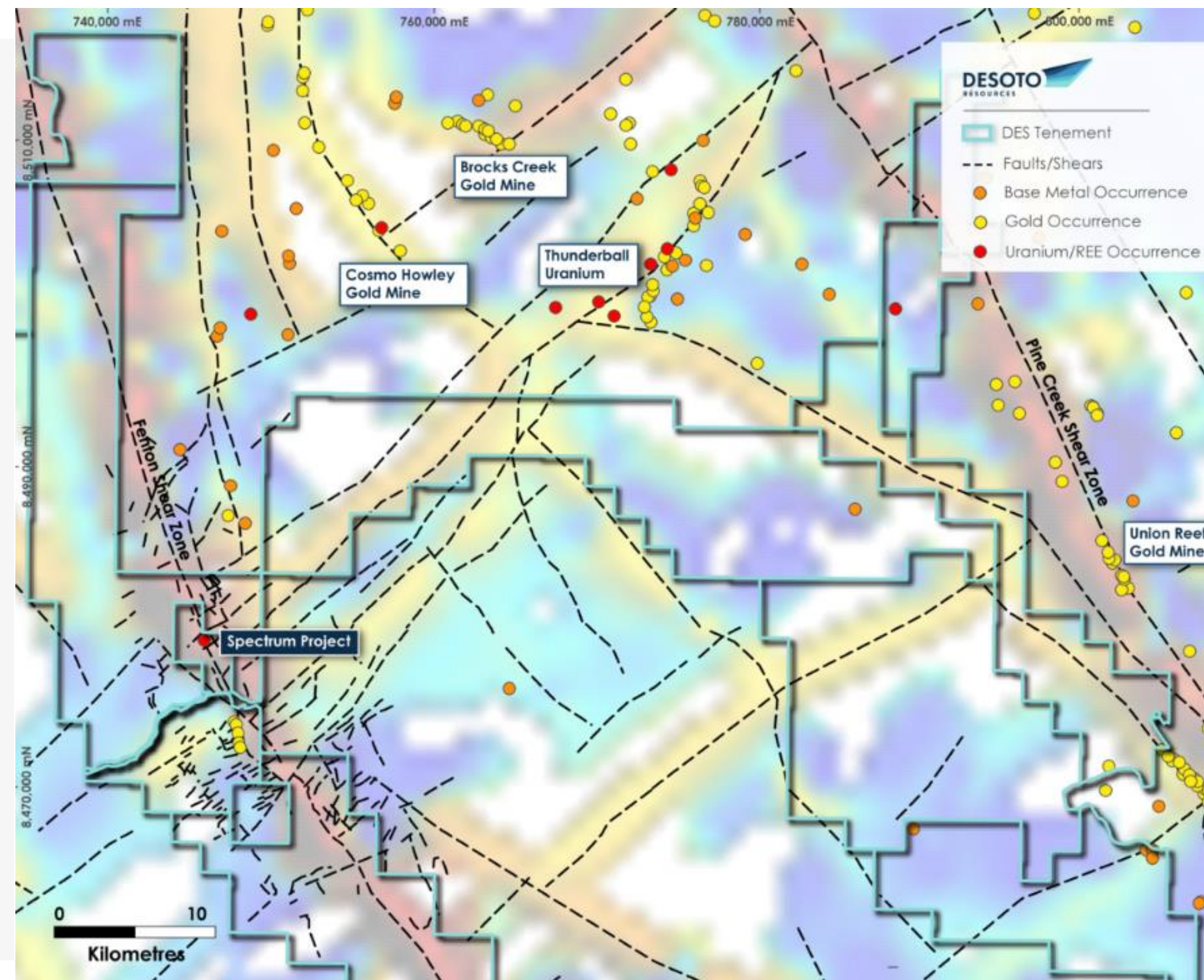
Gold mineralisation found in a number of the sedimentary units

Higher-grade deposits such as Cosmo Howley and Mount Porter are developed within BIF Formations of the Koolpin Formation and the Gerowie Tuff

Koolpin formation outcrops known within the Pine Creek Project and interpreted as gold host rock in FSZ drill core.

Cosmo Howley deposit similar to 40Moz Homestake Deposit, South Dakota

Region also contains small high-grade Cu-Pb-Zn VMS deposits



Company exploration licenses held by wholly owned subsidiary (Mangusta Minerals Pty Ltd)