

# Exploration Update

Blaze Minerals Limited (ASX: BLZ) ("**Blaze**" or the "**Company**") is pleased to provide an update on its Ntungamo Project in Uganda, where it is exploring for critical metals and rare earth elements (REEs) within LCT-type pegmatites and associated granitoids. The Ntungamo Project covers an area of 60 km<sup>2</sup> with multiple mapped pegmatites, two of which exceed widths of 140 meters and are open in all directions. This maiden drilling campaign is the first to test these pegmatites.

Blaze has deployed a handheld XRF analyser to scan core and identify mineralised zones for follow-up sampling and laboratory analysis at ALS Johannesburg. These XRF results are indicative only and may differ significantly from laboratory assays. The initial XRF results have indicated the presence of anomalous levels of the critical metal rubidium (Rb), as well as REEs like neodymium (Nd) and praseodymium (Pr). These elements are critical due to their applications in technology and renewable energy sectors. A table of all XRF results for these elements is set out in Annexure A.

## HIGHLIGHTS:

- **The Company has completed its first diamond drill hole NT-DD-001 to a final depth of 387 meters**
- **Peak spot readings from NT-DD-001 are 2471ppm Rb (0.27% Rb<sub>2</sub>O) at 351 meters, 1151ppm Nd (1342ppm Nd<sub>2</sub>O<sub>3</sub>) at 379m and 810ppm Pr (948ppm Pr<sub>2</sub>O<sub>3</sub>) at 136 meters**
- **Total significant readings (from 462 XRF scans) were 43 readings >1000ppm Rb (>0.11% Rb<sub>2</sub>O), 151 readings >500ppm Nd (>583ppm Nd<sub>2</sub>O<sub>3</sub>) and 64 readings >500ppm Pr (>585ppm Pr<sub>2</sub>O<sub>3</sub>)**
- **The XRF does not test for Beryllium which is known to exist from historical underground tunnels and a single open cast pit**
- **100 core samples have been cut and bagged from NT-DD-001 and will be sent to ALS Johannesburg for full multi-element analysis**
- **Sample export granted for Mityana drilling campaign (samples sent to ALS Johannesburg) with assay results pending**

*Note: Oxide conversions use standard factors: Rb<sub>2</sub>O = Rb x 1.1, Nd<sub>2</sub>O<sub>3</sub> = Nd x 1.166, Pr<sub>2</sub>O<sub>3</sub> = Pr x 1.17.*





ASX: BLZ

**XRF Methodology:** Company geologists use an Olympus Vanta M Series XRF set to its "REE Module" scanning 1m core intervals for 30 seconds each. Results are logged into a spreadsheet with depth intervals and multi-element data. This method works best for homogenous rock types. In the event the interval being analysed is made up of coarse pegmatite with large crystals, multiple readings are taken within a single interval (e.g., three readings at 101-102m reported as such), ensuring comprehensive coverage despite heterogeneity.

Director of Blaze Minerals Mathew Walker commented "These early XRF results validate our targeting strategy at Ntungamo, with strong rubidium and REE indications across significant widths. We're excited to accelerate sampling and drilling to unlock the project's potential."



Figure 1: Photo of marked-up core from hole NT-DD-001 from 252.6m to 262.1m. Note the finer-grained, grey coloured quartz granitoid (QGD) on top, in contrast to the mostly white coloured, coarse-grained pegmatite (CPEG) at the bottom of the photo. XRF readings show an increase in anomalous rubidium values in the CPEG (mostly within the mica and feldspar minerals). Spot readings from the XRF are marked in yellow on the core where relevant.





ASX: BLZ

ASX ANNOUNCEMENT  
4 March 2025



Figure 2: Field activities with XRF analyser

## NTUNGAMO PROJECT

The geology of the Ntungamo Project is comprised of a series of metasediments which form part of the Mesoproterozoic Kibaran Belt. These metasediments have been intruded by late-stage LCT pegmatites and associated granitoids which are enriched with several critical metals including beryllium, rubidium, lithium, tin and tantalite. Historical workers excavated underground tunnels as well as a single opencast pit targeting tantalite and beryllium. Recent exploration campaigns mapped these structures and have defined numerous pegmatites across the license area with two stand-out targets exceeding widths of 140m. Both targets are open in all directions and this drilling programme has been designed to test the grade and geometry of the pegmatites at depth. The Ntungamo licenses adjoin the Mwirasandu Tin Mine, historically Uganda's largest tin producer and currently being redeveloped to recommence operations.



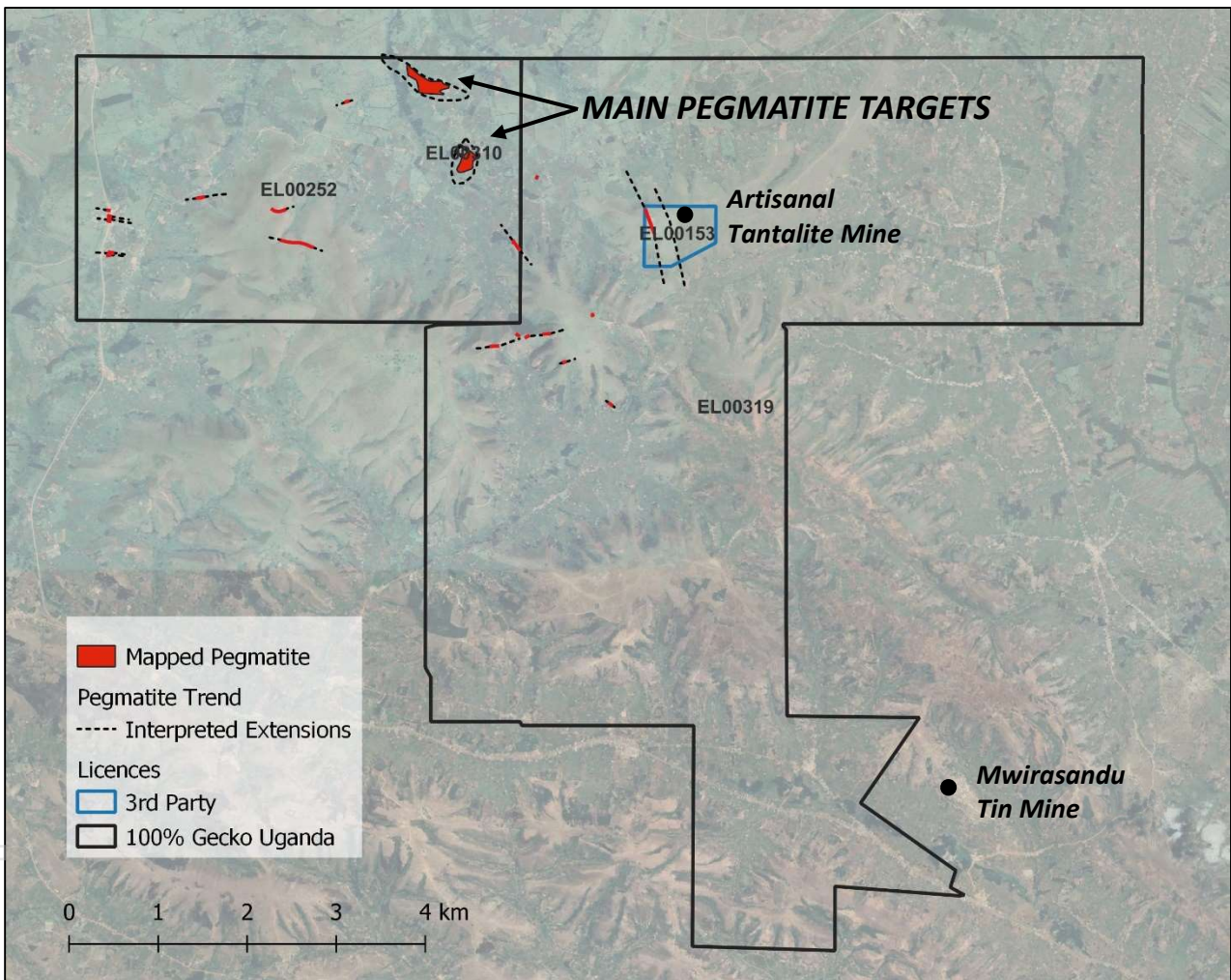


ASX: BLZ

ASX ANNOUNCEMENT  
4 March 2025

## DRILLING CAMPAIGN

The six-hole program tests the geometry, grade, and potential mineralogical zoning of two main pegmatite targets at depth and along strike. Drilling of the remaining five holes is underway, with progress updates to follow. Sampling follows geological boundaries, with nominal 1m intervals within pegmatites. XRF results guide the selection of mineralised zones for laboratory analysis at ALS Johannesburg.



**Figure 3:** Map showing the Ntungamo Project's tenements as well as the mapped pegmatites and surrounding mining operations.





ASX: BLZ

ASX ANNOUNCEMENT  
4 March 2025

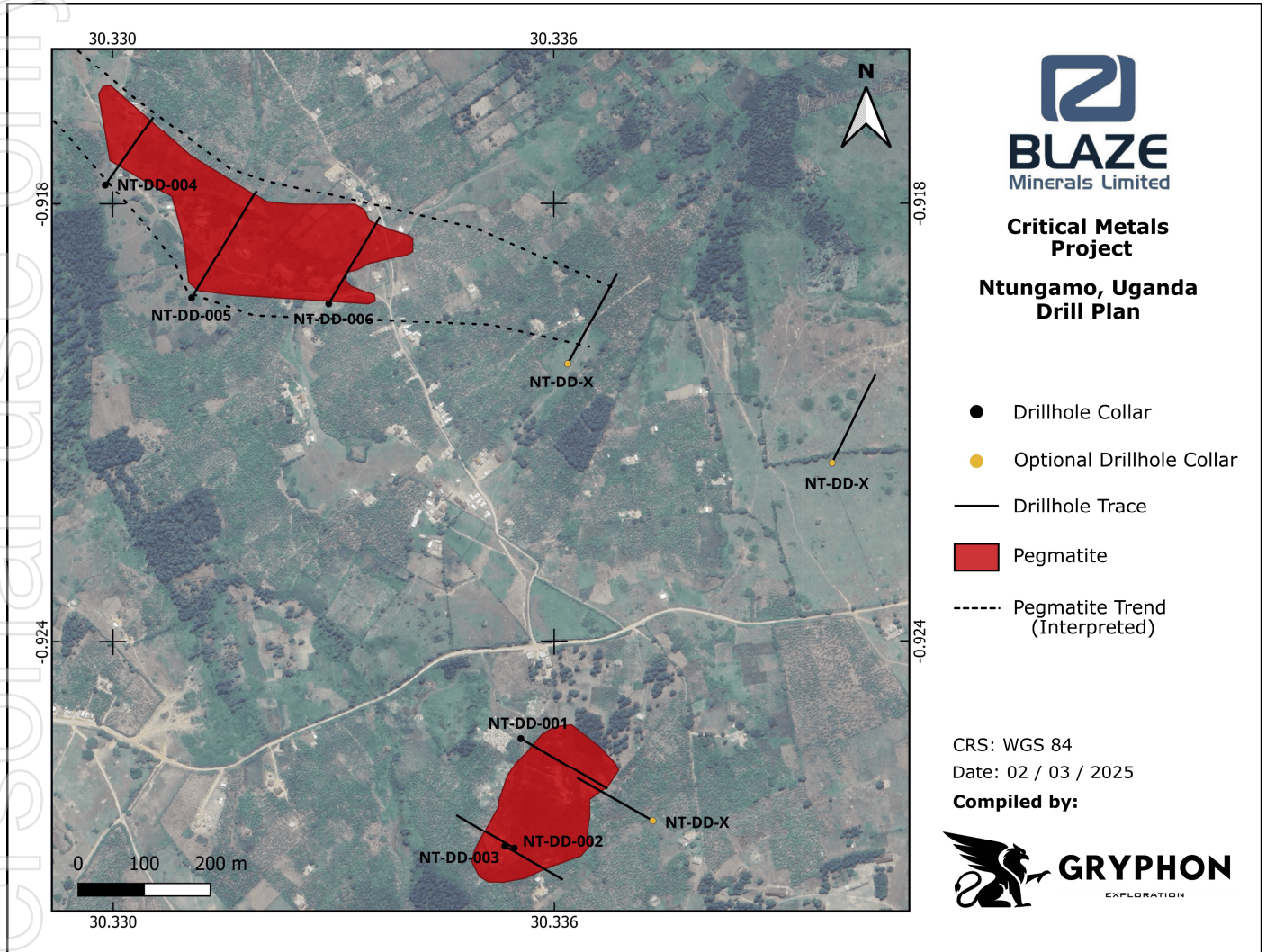


Figure 4: Map showing the drill plan at the Ntungamo Project

### Competent Persons Statement

The information in this announcement that relates to exploration results is based on and fairly represents information and supporting documentation prepared by Mr Dylan le Roux. Mr Dylan le Roux is a consultant geologist for the Company and a member of the South African Council for Natural Scientific Professions ("SACNASP"). Mr Dylan le Roux has a minority shareholding in Gecko Minerals Uganda Limited, the legal and beneficial owner of the Uganda Projects. Mr Dylan le Roux has sufficient experience relevant to the styles of mineralisation and types of deposits which are covered in this announcement and to the activity which they are undertaking to qualify as a Competent Person as defined in the 2012 edition of the 'Australasian Code for Reporting Exploration Results, Mineral Resources and Ore Reserves' ("JORC Code"). Mr Dylan le Roux consents to the inclusion in this announcement of the matters based on his information in the form and context in which it appears.





ASX: BLZ

ASX ANNOUNCEMENT  
4 March 2025

This announcement has been authorised for release by the Board of Blaze Minerals Limited

Mathew Walker  
Director  
**Blaze Minerals Limited**

- ENDS -

### About Blaze Minerals

Blaze Minerals, is an ASX-listed mineral exploration company, focusing on identifying and developing high-margin, high-grade, and high-value ore deposits in highly prospective regions.

The Company has recently completed strategic acquisitions of two significant projects in Uganda, aiming to deliver substantial value:

- **Ntungamo Project, Uganda:** Adjacent to Mwirasandu Mine, the largest producing tin mine in Uganda, and highly prospective for critical minerals such as beryllium, rubidium, lithium, and tin.
- **Mityana Project, Uganda:** Encompasses the site of a historic open-cut tantalite mine. Recent rock chip sampling has revealed elevated lithium levels, highlighting its potential for critical minerals.

Blaze Minerals also holds the **Kirkalocka Project** in Western Australia, located in the Gascoyne Region, which is prospective for gold exploration.

<b>Directors</b>	<b>BLZ Issued Capital</b>
David Prentice	<b>1,566,947,806</b> Ordinary Shares
<b>Chairman</b>	
Mathew Walker	<b>531,694,780</b> ("BLZO") Quoted options exercisable at \$0.01 on or before 31 December 2027
<b>Corporate Director</b>	
Simon Coxhell	<b>15,000,000</b> ("BLZOPT3") Unquoted options exercisable at \$0.03 on or before 31 December 2025
<b>Managing Director</b>	





JORC Code, 2012 Edition – Table 1

Section 1 Sampling Techniques and Data

(Criteria in this section apply to all succeeding sections.)

Criteria	JORC Code explanation	Commentary
Sampling techniques	<ul style="list-style-type: none"> <li>Nature and quality of sampling (eg cut channels, random chips, or specific specialised industry standard measurement tools appropriate to the minerals under investigation, such as down hole gamma sondes, or handheld XRF instruments, etc). These examples should not be taken as limiting the broad meaning of sampling.</li> <li>Include reference to measures taken to ensure sample representivity and the appropriate calibration of any measurement tools or systems used.</li> <li>Aspects of the determination of mineralisation that are Material to the Public Report.</li> <li>In cases where 'industry standard' work has been done this would be relatively simple (eg 'reverse circulation drilling was used to obtain 1 m samples from which 3 kg was pulverised to produce a 30 g charge for fire assay'). In other cases more explanation may be required, such as where there is coarse gold that has inherent sampling problems. Unusual commodities or mineralisation types (eg submarine nodules) may warrant disclosure of detailed information.</li> </ul>	<ul style="list-style-type: none"> <li>After recovering core from the rig and logging meter marks and other geological features it is scanned with a handheld XRF</li> <li>The company uses a handheld Olympus XRF to scan each meter of core to identify mineralized zones.</li> <li>The handheld XRF is calibrated to its "REE Module"</li> <li>The company geologist does this by slowly dragging the XRF across 1m intervals of core. This provides a rough indication of the composition of the core and is particularly useful in early-stage exploration to quickly assess the presence of mineralization and guide further sampling and drilling efforts.</li> <li>The scan is done for a 30second runtime.</li> <li>This approach works best for homogenous fine-grained rocks where the composition does not vary significantly. In places where coarse grained pegmatite is encountered, multiple readings are taken within the given meter interval and are all reported for that interval. For example, if 5 readings are taken from 101-102m, all 5 readings will be labelled as 101-102m.</li> <li>All the zones within the core are scanned to try and avoid bias.</li> <li>It should be noted that these results are merely indicative of mineralisation and that a full multi-element laboratory analysis is required to fully assess the actual mineralisation potential.</li> </ul>
Drilling techniques	<ul style="list-style-type: none"> <li>Drill type (eg core, reverse circulation, open-hole hammer, rotary air blast, auger, Bangka, sonic, etc) and details (eg core diameter, triple or standard tube, depth of diamond tails, face-sampling bit or other type, whether core is orientated and if so, by what method, etc).</li> </ul>	<ul style="list-style-type: none"> <li>A third party contractor is conducting diamond drilling using a CS-14 rig.</li> <li>Standard drilling procedures are followed.</li> <li>Drilling typically starts with HQ sized core and is cased off to NQ sized core once fresh rock is encountered at approximately 50m depth.</li> <li>Core is not orientated.</li> </ul>
Drill sample recovery	<ul style="list-style-type: none"> <li>Method of recording and assessing core and chip sample recoveries and results assessed.</li> <li>Measures taken to maximise sample recovery and ensure representative nature of the samples.</li> <li>Whether a relationship exists between sample recovery and grade and whether sample bias may have</li> </ul>	<ul style="list-style-type: none"> <li>Physical samples not collected for handheld XRF analysis.</li> <li>Core recovery for the upper 45m is generally poor with an average of 50% due to weathering of the rock.</li> </ul>





Criteria	JORC Code explanation	Commentary
	<i>occurred due to preferential loss/gain of fine/coarse material.</i>	
Logging	<ul style="list-style-type: none"> <li>• Whether core and chip samples have been geologically and geotechnically logged to a level of detail to support appropriate Mineral Resource estimation, mining studies and metallurgical studies.</li> <li>• Whether logging is qualitative or quantitative in nature. Core (or costean, channel, etc) photography.</li> <li>• The total length and percentage of the relevant intersections logged.</li> </ul>	<ul style="list-style-type: none"> <li>• Standard core logging procedures were followed.</li> <li>• All core is logged by company geologists including the following aspects: geotechnical logging, lithology, alteration, mineralization, veining and samples.</li> <li>• These aspects are logged with regards to their depth, type and intensity according to standard operating procedures.</li> <li>• Core is photographed wet and dry after all markups have been made.</li> </ul>
Sub-sampling techniques and sample preparation	<ul style="list-style-type: none"> <li>• If core, whether cut or sawn and whether quarter, half or all core taken.</li> <li>• If non-core, whether riffled, tube sampled, rotary split, etc and whether sampled wet or dry.</li> <li>• For all sample types, the nature, quality and appropriateness of the sample preparation technique.</li> <li>• Quality control procedures adopted for all sub-sampling stages to maximise representivity of samples.</li> <li>• Measures taken to ensure that the sampling is representative of the in situ material collected, including for instance results for field duplicate/second-half sampling.</li> <li>• Whether sample sizes are appropriate to the grain size of the material being sampled.</li> </ul>	<ul style="list-style-type: none"> <li>• No physical samples taken for XRF analysis.</li> <li>• The XRF analyses are considered indicative of mineralization but are not fully representative nor considered completely accurate.</li> </ul>
Quality of assay data and laboratory tests	<ul style="list-style-type: none"> <li>• The nature, quality and appropriateness of the assaying and laboratory procedures used and whether the technique is considered partial or total.</li> <li>• For geophysical tools, spectrometers, handheld XRF instruments, etc, the parameters used in determining the analysis including instrument make and model, reading times, calibrations factors applied and their derivation, etc.</li> <li>• Nature of quality control procedures adopted (eg standards, blanks, duplicates, external laboratory checks) and whether acceptable levels of accuracy (ie lack of bias) and precision have been established.</li> </ul>	<ul style="list-style-type: none"> <li>• This methodology is considered appropriate to highlight potentially mineralized zones on which to focus actual sampling efforts.</li> <li>• XRF Model: Olympus Vanta M Series</li> <li>• XRF Calibration: "Geochem REE" method.</li> <li>• No quality control procedures (such as standards or blanks) are implemented for the use of the XRF. Results are merely indicative and are used to direct actual sampling.</li> <li>• Detection limit for Rb is 1ppm. Nd and Pr detection limits not specified.</li> </ul>
Verification of sampling and assaying	<ul style="list-style-type: none"> <li>• The verification of significant intersections by either independent or alternative company personnel.</li> <li>• The use of twinned holes.</li> <li>• Documentation of primary data, data entry procedures, data verification, data</li> </ul>	<ul style="list-style-type: none"> <li>• Company geological personnel were involved in the collection and interpretation of results.</li> <li>• All primary data is captured in the field and stored in a series of excel spreadsheets which are backed up online using Microsoft OneDrive.</li> </ul>





Criteria	JORC Code explanation	Commentary
	<p><i>storage (physical and electronic) protocols.</i></p> <ul style="list-style-type: none"> <li>• <i>Discuss any adjustment to assay data.</i></li> </ul>	<ul style="list-style-type: none"> <li>• No physical copies are held.</li> <li>• No independent verification at this stage.</li> </ul>
<b>Location of data points</b>	<ul style="list-style-type: none"> <li>• <i>Accuracy and quality of surveys used to locate drill holes (collar and down-hole surveys), trenches, mine workings and other locations used in Mineral Resource estimation.</i></li> <li>• <i>Specification of the grid system used.</i></li> <li>• <i>Quality and adequacy of topographic control.</i></li> </ul>	<ul style="list-style-type: none"> <li>• Drillhole collars were positioned (+/- 5m) in WGS 84.</li> <li>• Locations were located by hand held GPS.</li> <li>• Downhole from and to depths are measured by company geologists.</li> </ul>
<b>Data spacing and distribution</b>	<ul style="list-style-type: none"> <li>• <i>Data spacing for reporting of Exploration Results.</i></li> <li>• <i>Whether the data spacing and distribution is sufficient to establish the degree of geological and grade continuity appropriate for the Mineral Resource and Ore Reserve estimation procedure(s) and classifications applied.</i></li> <li>• <i>Whether sample compositing has been applied.</i></li> </ul>	<ul style="list-style-type: none"> <li>• XRF results included in this announcement cannot be included in a Mineral Resource Estimate and are indicative of mineralization only.</li> <li>• No compositing was conducted.</li> </ul>
<b>Orientation of data in relation to geological structure</b>	<ul style="list-style-type: none"> <li>• <i>Whether the orientation of sampling achieves unbiased sampling of possible structures and the extent to which this is known, considering the deposit type.</i></li> <li>• <i>If the relationship between the drilling orientation and the orientation of key mineralised structures is considered to have introduced a sampling bias, this should be assessed and reported if material.</i></li> </ul>	<ul style="list-style-type: none"> <li>• XRF analysis of core is considered appropriate for this early-stage exploration to assist in defining mineralized zones.</li> <li>• The underlying structure of the pegmatite is not yet fully understood. However, efforts are made to drill as close to perpendicular to the structure as possible.</li> <li>• True width cannot yet be established.</li> </ul>
<b>Sample security</b>	<ul style="list-style-type: none"> <li>• <i>The measures taken to ensure sample security.</i></li> </ul>	<ul style="list-style-type: none"> <li>• No physical samples taken for XRF analysis.</li> <li>• Core is stored safely on site.</li> </ul>
<b>Audits or reviews</b>	<ul style="list-style-type: none"> <li>• <i>The results of any audits or reviews of sampling techniques and data.</i></li> </ul>	<ul style="list-style-type: none"> <li>• No QA/QC samples</li> <li>• No audits or reviews conducted at this stage</li> <li>•</li> </ul>

## Section 2 Reporting of Exploration Results

(Criteria listed in the preceding section also apply to this section.)

Criteria	JORC Code explanation	Commentary
<b>Mineral tenement and land tenure status</b>	<ul style="list-style-type: none"> <li>• <i>Type, reference name/number, location and ownership including agreements or material issues with third parties such as joint ventures, partnerships, overriding royalties, native title interests, historical sites, wilderness or national park and environmental settings.</i></li> <li>• <i>The security of the tenure held at the time of reporting along with any known</i></li> </ul>	<ul style="list-style-type: none"> <li>• All samples were taken on EL00301, EL00311 and EL00252 which are granted in terms of the Ugandan mining act.</li> <li>• There are no known impediments to operating on this license.</li> <li>• Blaze is the 60% holder of Gecko Minerals Uganda which owns these licenses.</li> </ul>





ASX: BLZ



Criteria	JORC Code explanation	Commentary
	<i>impediments to obtaining a licence to operate in the area.</i>	
Exploration done by other parties	<ul style="list-style-type: none"> <li>Acknowledgment and appraisal of exploration by other parties.</li> </ul>	<ul style="list-style-type: none"> <li>Sampling and other activities were conducted by contractors employed by Blaze Minerals Limited.</li> </ul>
Geology	<ul style="list-style-type: none"> <li>Deposit type, geological setting and style of mineralisation.</li> </ul>	<ul style="list-style-type: none"> <li>The prospect is considered to be an LCT-type pegmatite which is prospective for critical metals and REE's such as rubidium, lithium, neodymium, praseodymium and cesium.</li> </ul>
Drill hole Information	<ul style="list-style-type: none"> <li>A summary of all information material to the understanding of the exploration results including a tabulation of the following information for all Material drill holes:               <ul style="list-style-type: none"> <li>easting and northing of the drill hole collar</li> <li>elevation or RL (Reduced Level – elevation above sea level in metres) of the drill hole collar</li> <li>dip and azimuth of the hole</li> <li>down hole length and interception depth</li> <li>hole length.</li> </ul> </li> <li>If the exclusion of this information is justified on the basis that the information is not Material and this exclusion does not detract from the understanding of the report, the Competent Person should clearly explain why this is the case.</li> </ul>	<ul style="list-style-type: none"> <li>Drillhole number NT-DD-001 details: Collar: -0.9252°, (Lat) 30.3355° (Long) Azimuth: 120° Dip: -60° Elevation: 1453m Depth: 387m</li> </ul>
Data aggregation methods	<ul style="list-style-type: none"> <li>In reporting Exploration Results, weighting averaging techniques, maximum and/or minimum grade truncations (eg cutting of high grades) and cut-off grades are usually Material and should be stated.</li> <li>Where aggregate intercepts incorporate short lengths of high grade results and longer lengths of low grade results, the procedure used for such aggregation should be stated and some typical examples of such aggregations should be shown in detail.</li> <li>The assumptions used for any reporting of metal equivalent values should be clearly stated.</li> </ul>	<ul style="list-style-type: none"> <li>The attached table shows all the readings taken on the core.</li> <li>No maximum or minimum cut-off grades were applied.</li> <li>Zones of mineralization were defined as sections where the average XRF readings exceeded 900ppm Rb. This average is not weighted according to interval length and is therefore considered indicative only.</li> <li>Any readings below detection limit were normalized to 0 to calculate averages.</li> </ul>
Relationship between mineralisation widths and intercept lengths	<ul style="list-style-type: none"> <li>These relationships are particularly important in the reporting of Exploration Results.</li> <li>If the geometry of the mineralisation with respect to the drill hole angle is known, its nature should be reported.</li> <li>If it is not known and only the down hole lengths are reported, there should be a clear statement to this effect (eg</li> </ul>	<ul style="list-style-type: none"> <li>Geometry of the pegmatites are not yet known therefore none of the intercepts can be considered true width.</li> </ul>





ASX: BLZ



Criteria	JORC Code explanation	Commentary
	<i>'down hole length, true width not known').</i>	
<b>Diagrams</b>	<ul style="list-style-type: none"> <li><i>Appropriate maps and sections (with scales) and tabulations of intercepts should be included for any significant discovery being reported These should include, but not be limited to a plan view of drill hole collar locations and appropriate sectional views.</i></li> </ul>	<ul style="list-style-type: none"> <li>All diagrams are designed to provide the reader with an accurate and comprehensive overview of the samples locations and grades obtained.</li> <li>Sectional views are not currently applicable.</li> </ul>
<b>Balanced reporting</b>	<ul style="list-style-type: none"> <li><i>Where comprehensive reporting of all Exploration Results is not practicable, representative reporting of both low and high grades and/or widths should be practiced to avoid misleading reporting of Exploration Results.</i></li> </ul>	<ul style="list-style-type: none"> <li>All XRF readings have been reported in this announcement.</li> </ul>
<b>Other substantive exploration data</b>	<ul style="list-style-type: none"> <li><i>Other exploration data, if meaningful and material, should be reported including (but not limited to): geological observations; geophysical survey results; geochemical survey results; bulk samples – size and method of treatment; metallurgical test results; bulk density, groundwater, geotechnical and rock characteristics; potential deleterious or contaminating substances.</i></li> </ul>	<ul style="list-style-type: none"> <li>No meaningful previous exploration data to be reported.</li> <li>Surface sampling has been released in previous announcements.</li> </ul>
<b>Further work</b>	<ul style="list-style-type: none"> <li><i>The nature and scale of planned further work (eg tests for lateral extensions or depth extensions or large-scale step-out drilling).</i></li> <li><i>Diagrams clearly highlighting the areas of possible extensions, including the main geological interpretations and future drilling areas, provided this information is not commercially sensitive.</i></li> </ul>	<ul style="list-style-type: none"> <li>Further exploration activities include the sampling of the anomalous zones identified by the XRF.</li> <li>Core will be cut in half, bagged, and sent to ALS Johannesburg for multi element analysis.</li> <li>Another 7 holes are planned for the Ntungamo Project targeting 2 different pegmatites.</li> </ul>





ASX: BLZ

ASX ANNOUNCEMENT  
4 March 2025

**Annexure A - XRF Results of rubidium (Rb), neodymium (Nd) and praseodymium (Pr)  
(Drill hole NT-DD-001)**

For personal use only



Method Name	Sample ID	From	To	Units	Rb	Pr	Nd	Project	Sample Type	Notes
GeoChem REE	33-36m	<b>33</b>	<b>36</b>	PPM	408	<LOD	<LOD	Ntungamo	Core	QGD-MW
GeoChem REE	33-36m	<b>33</b>	<b>36</b>	PPM	324	<LOD	<LOD	Ntungamo	Core	QGD-MW
GeoChem REE	36-39m	<b>36</b>	<b>39</b>	PPM	422	<LOD	<LOD	Ntungamo	Core	QGD-MW
GeoChem REE	36-39m	<b>36</b>	<b>39</b>	PPM	426	<LOD	<LOD	Ntungamo	Core	QGD-MW
GeoChem REE	39-42m	<b>39</b>	<b>42</b>	PPM	377	<LOD	<LOD	Ntungamo	Core	QGD-MW
GeoChem REE	42-45m	<b>42</b>	<b>45</b>	PPM	20	523	778	Ntungamo	Core	QGD-MW
GeoChem REE	42-45m	<b>42</b>	<b>45</b>	PPM	255	<LOD	<LOD	Ntungamo	Core	QGD-MW
GeoChem REE	45-46m	<b>45</b>	<b>46</b>	PPM	176	<LOD	<LOD	Ntungamo	Core	QGD-MW
GeoChem REE	46-47m	<b>46</b>	<b>47</b>	PPM	156	610	<LOD	Ntungamo	Core	QGD-MW
GeoChem REE	47-48m	<b>47</b>	<b>48</b>	PPM	198	<LOD	<LOD	Ntungamo	Core	QGD-MW
GeoChem REE	48-49m	<b>48</b>	<b>49</b>	PPM	155	<LOD	<LOD	Ntungamo	Core	QGD-MW
GeoChem REE	49-50m	<b>49</b>	<b>50</b>	PPM	158	<LOD	<LOD	Ntungamo	Core	QGD-MW
GeoChem REE	50-51m	<b>50</b>	<b>51</b>	PPM	160	<LOD	<LOD	Ntungamo	Core	QGD-MW
GeoChem REE	51-52m	<b>51</b>	<b>52</b>	PPM	20	647	768	Ntungamo	Core	QGD-MW
GeoChem REE	52-53m	<b>52</b>	<b>53</b>	PPM	227	<LOD	<LOD	Ntungamo	Core	QGD-MW
GeoChem REE	53-54m	<b>53</b>	<b>54</b>	PPM	137	<LOD	805	Ntungamo	Core	QGD-MW
GeoChem REE	54-55m	<b>54</b>	<b>55</b>	PPM	350	479	721	Ntungamo	Core	QGD-MW
GeoChem REE	54-55m	<b>54</b>	<b>55</b>	PPM	340	<LOD	<LOD	Ntungamo	Core	GPH-MW
GeoChem REE	55-56m	<b>55</b>	<b>56</b>	PPM	94	506	829	Ntungamo	Core	CPEG-MW
GeoChem REE	56-57m	<b>56</b>	<b>57</b>	PPM	191	<LOD	<LOD	Ntungamo	Core	CPEG-MW
GeoChem REE	57-58m	<b>57</b>	<b>58</b>	PPM	194	<LOD	<LOD	Ntungamo	Core	CPEG-MW
GeoChem REE	58-59m	<b>58</b>	<b>59</b>	PPM	121	580	852	Ntungamo	Core	CPEG-MW
GeoChem REE	59-60m	<b>59</b>	<b>60</b>	PPM	273	518	<LOD	Ntungamo	Core	GPH-MW
GeoChem REE	60-61m	<b>60</b>	<b>61</b>	PPM	385	526	<LOD	Ntungamo	Core	GPH-FR
GeoChem REE	61-62m	<b>61</b>	<b>62</b>	PPM	80	<LOD	655	Ntungamo	Core	QPEG-FR
GeoChem REE	62-63m	<b>62</b>	<b>63</b>	PPM	372	<LOD	<LOD	Ntungamo	Core	GPH-FR
GeoChem REE	62-63m	<b>62</b>	<b>63</b>	PPM	333	<LOD	<LOD	Ntungamo	Core	GPH-FR
GeoChem REE	63-64m	<b>63</b>	<b>64</b>	PPM	348	<LOD	<LOD	Ntungamo	Core	GPH-FR
GeoChem REE	64-65m	<b>64</b>	<b>65</b>	PPM	265	448	<LOD	Ntungamo	Core	GPH-FR
GeoChem REE	65-66m	<b>65</b>	<b>66</b>	PPM	281	<LOD	<LOD	Ntungamo	Core	GPH-FR

personal use only

GeoChem REE	66-67m	<b>66</b>	<b>67</b>	PPM	303	<LOD	<LOD	Ntungamo	Core	GPH-FR
GeoChem REE	67-68m	<b>67</b>	<b>68</b>	PPM	301	<LOD	<LOD	Ntungamo	Core	GPH-FR
GeoChem REE	68-69m	<b>68</b>	<b>69</b>	PPM	293	<LOD	<LOD	Ntungamo	Core	GPH-FR
GeoChem REE	69-70m	<b>69</b>	<b>70</b>	PPM	258	<LOD	<LOD	Ntungamo	Core	GPH-FR
GeoChem REE	70-71m	<b>70</b>	<b>71</b>	PPM	79	520	623	Ntungamo	Core	QGD/GPH-FR
GeoChem REE	71-72m	<b>71</b>	<b>72</b>	PPM	211	<LOD	<LOD	Ntungamo	Core	GPH-FR
GeoChem REE	72-73m	<b>72</b>	<b>73</b>	PPM	55	<LOD	<LOD	Ntungamo	Core	QPEG-FR
GeoChem REE	73-74m	<b>73</b>	<b>74</b>	PPM	253	453	<LOD	Ntungamo	Core	QGD/GPH-FR
GeoChem REE	74-75m	<b>74</b>	<b>75</b>	PPM	347	<LOD	668	Ntungamo	Core	GPH/QPEG-FR
GeoChem REE	75-76m	<b>75</b>	<b>76</b>	PPM	291	532	<b>847</b>	Ntungamo	Core	GPH-FR
GeoChem REE	76-77m	<b>76</b>	<b>77</b>	PPM	241	<LOD	<LOD	Ntungamo	Core	GPH-FR
GeoChem REE	77-78m	<b>77</b>	<b>78</b>	PPM	69	<LOD	<LOD	Ntungamo	Core	QPEG-FR
GeoChem REE	78-79m	<b>78</b>	<b>79</b>	PPM	46	<LOD	<LOD	Ntungamo	Core	QPEG-FR
GeoChem REE	79-80m	<b>79</b>	<b>80</b>	PPM	367	<LOD	<b>770</b>	Ntungamo	Core	GPH/QPEG-FR
GeoChem REE	80-81m	<b>80</b>	<b>81</b>	PPM	240	<LOD	668	Ntungamo	Core	GPH-WW
GeoChem REE	81-82m	<b>81</b>	<b>82</b>	PPM	250	<LOD	<b>948</b>	Ntungamo	Core	GPH-FR
GeoChem REE	82-83m	<b>82</b>	<b>83</b>	PPM	84	<LOD	<LOD	Ntungamo	Core	QPEG-FR
GeoChem REE	83-84m	<b>83</b>	<b>84</b>	PPM	311	470	<b>856</b>	Ntungamo	Core	GPH-FR
GeoChem REE	84-85m	<b>84</b>	<b>85</b>	PPM	395	<LOD	<LOD	Ntungamo	Core	GPH-FR
GeoChem REE	85-86m	<b>85</b>	<b>86</b>	PPM	195	<LOD	<LOD	Ntungamo	Core	GPH-FR
GeoChem REE	86-87m	<b>86</b>	<b>87</b>	PPM	290	<LOD	<b>725</b>	Ntungamo	Core	GPH-FR
GeoChem REE	87-88m	<b>87</b>	<b>88</b>	PPM	278	<LOD	<b>1083</b>	Ntungamo	Core	GPH-FR
GeoChem REE	88-89m	<b>88</b>	<b>89</b>	PPM	156	<LOD	<LOD	Ntungamo	Core	GPH-FR
GeoChem REE	89-90m	<b>89</b>	<b>90</b>	PPM	335	<LOD	<LOD	Ntungamo	Core	GPH-FR
GeoChem REE	90-91m	<b>90</b>	<b>91</b>	PPM	126	<LOD	<LOD	Ntungamo	Core	GPH-FR
GeoChem REE	90-91m	<b>90</b>	<b>91</b>	PPM	46	<LOD	<b>980</b>	Ntungamo	Core	MICA Vein-FR
GeoChem REE	91-92m	<b>91</b>	<b>92</b>	PPM	233	<LOD	690	Ntungamo	Core	GPH-FR
GeoChem REE	92-93m	<b>92</b>	<b>93</b>	PPM	259	<LOD	<LOD	Ntungamo	Core	GPH-FR
GeoChem REE	93-94m	<b>93</b>	<b>94</b>	PPM	271	<LOD	<LOD	Ntungamo	Core	GPH-FR
GeoChem REE	94-95m	<b>94</b>	<b>95</b>	PPM	294	<LOD	<LOD	Ntungamo+AY61:BD203	Core	GPH-FR
GeoChem REE	95-96m	<b>95</b>	<b>96</b>	PPM	340	<LOD	551	Ntungamo	Core	GPH-FR

GeoChem REE	96-97m	<b>96 97</b>	PPM	276	404	<LOD	Ntungamo	Core	GPH-FR
GeoChem REE	96-97m	<b>96 97</b>	PPM	320	<LOD	<LOD	Ntungamo	Core	GPH-FR
GeoChem REE	97-98m	<b>97 98</b>	PPM	325	<LOD	<LOD	Ntungamo	Core	Tourm.
GeoChem REE	97-98m	<b>97 98</b>	PPM	161	<LOD	<LOD	Ntungamo	Core	GPH-FR
GeoChem REE	98-99m	<b>98 99</b>	PPM	22	<LOD	<LOD	Ntungamo	Core	QPG-FR
GeoChem REE	Blank		PPM	<LOD	<LOD	<LOD	Ntungamo	Core	Silica Powder
GeoChem REE	Blank		PPM	18	<LOD	<LOD	Ntungamo	Core	Silica Powder
GeoChem REE	99-100m	<b>99 100</b>	PPM	311	<LOD	<LOD	Ntungamo	Core	GPH-FR
GeoChem REE	100-101m	<b>100 101</b>	PPM	53	<LOD	<LOD	Ntungamo	Core	QPEG-FR
GeoChem REE	100-101m	<b>100 101</b>	PPM	109	<LOD	<LOD	Ntungamo	Core	QPEG-FR
GeoChem REE	100-101m	<b>100 101</b>	PPM	320	454	<LOD	Ntungamo	Core	GPH-FR
GeoChem REE	101-102m	<b>101 102</b>	PPM	292	394	<LOD	Ntungamo	Core	GPH-FR
GeoChem REE	102-103m	<b>102 103</b>	PPM	98	528	<LOD	Ntungamo	Core	QPEG-FR
GeoChem REE	102-103m	<b>102 103</b>	PPM	255	516	626	Ntungamo	Core	GPH-FR
GeoChem REE	103-104m	<b>103 104</b>	PPM	203	527	473	Ntungamo	Core	GPH-FR
GeoChem REE	103-104m	<b>103 104</b>	PPM	290	<LOD	663	Ntungamo	Core	GPH-FR
GeoChem REE	104-105m	<b>104 105</b>	PPM	256	515	<LOD	Ntungamo	Core	GPH-FR
GeoChem REE	104-105m	<b>104 105</b>	PPM	213	<LOD	<LOD	Ntungamo	Core	GPH-FR
GeoChem REE	104-105m	<b>104 105</b>	PPM	410	<LOD	623	Ntungamo	Core	GPH-FR
GeoChem REE	105-106m	<b>105 106</b>	PPM	291	<LOD	849	Ntungamo	Core	GPH-FR
GeoChem REE	106-107m	<b>106 107</b>	PPM	237	<LOD	<LOD	Ntungamo	Core	GPH-FR
GeoChem REE	107-108m	<b>107 108</b>	PPM	258	<LOD	<LOD	Ntungamo	Core	GPH-FR
GeoChem REE	108-109m	<b>108 109</b>	PPM	75	<LOD	739	Ntungamo	Core	GPH-FR
GeoChem REE	109-110m	<b>109 110</b>	PPM	308	<LOD	<LOD	Ntungamo	Core	GPH-FR
GeoChem REE	110-111m	<b>110 111</b>	PPM	401	<LOD	697	Ntungamo	Core	GPH-FR
GeoChem REE	111-112m	<b>111 112</b>	PPM	21	470	663	Ntungamo	Core	GPH-FR
GeoChem REE	112-113m	<b>112 113</b>	PPM	106	<LOD	733	Ntungamo	Core	QPEG-FR
GeoChem REE	112-113m	<b>112 113</b>	PPM	<LOD	<LOD	<LOD	Ntungamo	Core	Spot
GeoChem REE	112-113m	<b>112 113</b>	PPM	<LOD	403	1044	Ntungamo	Core	Spot
GeoChem REE	113-114m	<b>113 114</b>	PPM	23	<LOD	<LOD	Ntungamo	Core	QPEG-FR
GeoChem REE	114-115m	<b>114 115</b>	PPM	363	530	846	Ntungamo	Core	GPH-FR

personal use only

GeoChem REE	115-116m	<b>115 116</b> PPM	334 <LOD <LOD	Ntungamo	Core	GPH-FR
GeoChem REE	116-117m	<b>116 117</b> PPM	288 <LOD <LOD	Ntungamo	Core	GPH-FR
GeoChem REE	116-117m	<b>116 117</b> PPM	328 <LOD <b>749</b>	Ntungamo	Core	GPH-FR
GeoChem REE	117-118m	<b>117 118</b> PPM	299 <LOD <LOD	Ntungamo	Core	GPH-FR
GeoChem REE	117-118m	<b>117 118</b> PPM	248 <LOD 660	Ntungamo	Core	GPH-FR
GeoChem REE	118-119m	<b>118 119</b> PPM	279 <LOD <LOD	Ntungamo	Core	GPH-FR
GeoChem REE	119-120m	<b>119 120</b> PPM	303 <LOD <LOD	Ntungamo	Core	GPH-FR
GeoChem REE	120-121m	<b>120 121</b> PPM	278 508 <b>721</b>	Ntungamo	Core	GPH-FR
GeoChem REE	121-122m	<b>121 122</b> PPM	281 <LOD 562	Ntungamo	Core	GPH-FR
GeoChem REE	121-122m	<b>121 122</b> PPM	327 455 <LOD	Ntungamo	Core	GPH-FR
GeoChem REE	122-123m	<b>122 123</b> PPM	304 <LOD 656	Ntungamo	Core	GPH-FR
GeoChem REE	123-124m	<b>123 124</b> PPM	250 <LOD <LOD	Ntungamo	Core	GPH-FR
GeoChem REE	124-125m	<b>124 125</b> PPM	237 <LOD <LOD	Ntungamo	Core	GPH-FR
GeoChem REE	125-126m	<b>125 126</b> PPM	242 <LOD <LOD	Ntungamo	Core	GPH-FR
GeoChem REE	126-127m	<b>126 127</b> PPM	253 <LOD <LOD	Ntungamo	Core	GPH-FR
GeoChem REE	127-128m	<b>127 128</b> PPM	322 <LOD <LOD	Ntungamo	Core	GPH-FR
GeoChem REE	128-129m	<b>128 129</b> PPM	56 <LOD 690	Ntungamo	Core	QPEG-FR
GeoChem REE	129-130m	<b>129 130</b> PPM	322 <LOD <LOD	Ntungamo	Core	GPH-FR
GeoChem REE	130-131m	<b>130 131</b> PPM	374 <LOD <LOD	Ntungamo	Core	GPH-FR
GeoChem REE	131-132m	<b>131 132</b> PPM	463 <LOD 658	Ntungamo	Core	GPH-FR
GeoChem REE	132-133m	<b>132 133</b> PPM	491 <LOD <LOD	Ntungamo	Core	GPH-FR
GeoChem REE	133-134m	<b>133 134</b> PPM	<b>1560</b> <LOD <LOD	Ntungamo	Core	QPEG-FR
GeoChem REE	133-134m	<b>133 134</b> PPM	<b>1971</b> <LOD <LOD	Ntungamo	Core	QPEG-FR
GeoChem REE	133-134m	<b>133 134</b> PPM	<b>1242</b> <LOD <LOD	Ntungamo	Core	QPEG-FR
GeoChem REE	134-135m	<b>134 135</b> PPM	0 492 <LOD	Ntungamo	Core	QPEG-FR
GeoChem REE	134-135m	<b>134 135</b> PPM	480 <LOD <LOD	Ntungamo	Core	QPEG-FR
GeoChem REE	135-136m	<b>135 136</b> PPM	161 <LOD <LOD	Ntungamo	Core	QPEG-FR
GeoChem REE	135-136m	<b>135 136</b> PPM	<b>1017</b> <LOD <b>751</b>	Ntungamo	Core	QPEG-FR
GeoChem REE	136-137m	<b>136 137</b> PPM	<b>934</b> <LOD <b>724</b>	Ntungamo	Core	QPEG-FR
GeoChem REE	136-137m	<b>136 137</b> PPM	<b>978</b> <b>810</b> <b>904</b>	Ntungamo	Core	QPEG-FR
GeoChem REE	136-137m	<b>136 137</b> PPM	<b>1937</b> 587 <LOD	Ntungamo	Core	Mica-FR

personal use only

GeoChem REE			PPM	1368	<LOD	<LOD		
GeoChem REE			PPM	57	635	<LOD		
GeoChem REE	137-138m	137	138	PPM	96	<LOD	<LOD	Ntungamo Core QPEG-FR
GeoChem REE	137-138m	137	138	PPM	1333	<LOD	912	Ntungamo Core QPEG-FR
GeoChem REE	138-139m	138	139	PPM	169	<LOD	<LOD	Ntungamo Core QPEG-FR
GeoChem REE	138-139m	138	139	PPM	754	<LOD	<LOD	Ntungamo Core QPEG-FR
GeoChem REE	139-140m	139	140	PPM	199	<LOD	<LOD	Ntungamo Core QGD-FR
GeoChem REE	139-140m	139	140	PPM	309	<LOD	<LOD	Ntungamo Core QGD-FR
GeoChem REE	140-141m	140	141	PPM	122	<LOD	863	Ntungamo Core QGD-FR
GeoChem REE	141-142m	141	142	PPM	146	<LOD	<LOD	Ntungamo Core QGD-FR
GeoChem REE	142-143m	142	143	PPM	209	<LOD	<LOD	Ntungamo Core QGD-FR
GeoChem REE	143-144m	143	144	PPM	38	558	795	Ntungamo Core QGD-FR
GeoChem REE	143-144m	143	144	PPM	552	<LOD	<LOD	Ntungamo Core GPH-FR
GeoChem REE	144-145m	144	145	PPM	453	<LOD	<LOD	Ntungamo Core GPH-FR
GeoChem REE	145-146m	145	146	PPM	408	<LOD	<LOD	Ntungamo Core GPH-FR
GeoChem REE	146-147m	146	147	PPM	483	<LOD	608	Ntungamo Core GPH-FR
GeoChem REE	147-148m	147	148	PPM	399	<LOD	666	Ntungamo Core GPH-FR
GeoChem REE	148-149m	148	149	PPM	384	<LOD	613	Ntungamo Core GPH-FR
GeoChem REE	149-150m	149	150	PPM	433	<LOD	<LOD	Ntungamo Core GPH-FR
GeoChem REE	150-151m	150	151	PPM	121	<LOD	736	Ntungamo Core QGD-FR
GeoChem REE	151-152m	151	152	PPM	56	<LOD	<LOD	Ntungamo Core QGD-FR
GeoChem REE	152-153m	152	153	PPM	267	<LOD	888	Ntungamo Core QGD-FR
GeoChem REE	153-154m	153	154	PPM	394	<LOD	<LOD	Ntungamo Core GPH-FR
GeoChem REE	154-155m	154	155	PPM	467	<LOD	<LOD	Ntungamo Core GPH-FR
GeoChem REE	155-156m	155	156	PPM	324	463	<LOD	Ntungamo Core GPH-FR
GeoChem REE	156-157m	156	157	PPM	127	659	669	Ntungamo Core QGD-FR
GeoChem REE	157-158m	157	158	PPM	137	584	946	Ntungamo Core QGD-FR
GeoChem REE	158-159m	158	159	PPM	79	<LOD	860	Ntungamo Core QGD-FR
GeoChem REE	159-160m	159	160	PPM	314	<LOD	<LOD	Ntungamo Core GPH-FR
GeoChem REE	160-161m	160	161	PPM	336	<LOD	866	Ntungamo Core GPH-FR
GeoChem REE	161-162m	161	162	PPM	256	<LOD	<LOD	Ntungamo Core GPH-FR

personal use only

GeoChem REE	162-163m	<b>162 163</b> PPM	299 <LOD	<b>755</b>	Ntungamo	Core	GPH-FR
GeoChem REE	163-164m	<b>163 164</b> PPM	<LOD <LOD <LOD		Ntungamo	Core	QTZ-FR
GeoChem REE	163-164m	<b>163 164</b> PPM	323 <LOD <LOD		Ntungamo	Core	GPH-FR
GeoChem REE	164-165m	<b>164 165</b> PPM	385 <LOD	685	Ntungamo	Core	GPH-FR
GeoChem REE	164-165m	<b>164 165</b> PPM	<LOD 486 <LOD		Ntungamo	Core	Qtz-FR
GeoChem REE	165-166m	<b>165 166</b> PPM	368 <LOD <LOD		Ntungamo	Core	GPH-FR
GeoChem REE	165-166m	<b>165 166</b> PPM	42 <LOD <LOD		Ntungamo	Core	QGD LENS-FR
GeoChem REE	166-167m	<b>166 167</b> PPM	231 <LOD <LOD		Ntungamo	Core	GPH-FR
GeoChem REE	167-168m	<b>167 168</b> PPM	345 <LOD <LOD		Ntungamo	Core	GPH-FR
GeoChem REE	168-169m	<b>168 169</b> PPM	268 <LOD	<b>739</b>	Ntungamo	Core	GPH-FR
GeoChem REE	169-170m	<b>169 170</b> PPM	332 543 <LOD		Ntungamo	Core	GPH-FR
GeoChem REE	170-171m	<b>170 171</b> PPM	386 494	<b>1016</b>	Ntungamo	Core	GPH-FR
GeoChem REE	171-172m	<b>171 172</b> PPM	388 <LOD <LOD		Ntungamo	Core	GPH-FR
GeoChem REE	172-173m	<b>172 173</b> PPM	104 <LOD <LOD		Ntungamo	Core	QGD-FR
GeoChem REE	173-174m	<b>173 174</b> PPM	126 <LOD <LOD		Ntungamo	Core	QGD-FR
GeoChem REE	174-175m	<b>174 175</b> PPM	275 <LOD	<b>714</b>	Ntungamo	Core	QGD-FR
GeoChem REE	175-176m	<b>175 176</b> PPM	219 <LOD	<b>863</b>	Ntungamo	Core	QGD-FR
GeoChem REE	176-177m	<b>176 177</b> PPM	254 <LOD <LOD		Ntungamo	Core	QGD-FR
GeoChem REE	176-177m	<b>176 177</b> PPM	402 532 <LOD		Ntungamo	Core	QGD-FR
GeoChem REE	177-178m	<b>177 178</b> PPM	566 <LOD <LOD		Ntungamo	Core	GPH-FR
GeoChem REE	177-178m	<b>177 178</b> PPM	207 <LOD <LOD		Ntungamo	Core	SMD-FR
GeoChem REE	178-179m	<b>178 179</b> PPM	121 <LOD <LOD		Ntungamo	Core	Qtz-FR
GeoChem REE	178-179m	<b>178 179</b> PPM	510 <LOD <LOD		Ntungamo	Core	GPH-FR
GeoChem REE	179-180m	<b>179 180</b> PPM	27 <LOD <LOD		Ntungamo	Core	QPEG-FR
GeoChem REE	180-181m	<b>180 181</b> PPM	131 587	<b>781</b>	Ntungamo	Core	QGD-FR
GeoChem REE	181-182m	<b>181 182</b> PPM	81 <LOD <LOD		Ntungamo	Core	QGD-FR
GeoChem REE	182-183m	<b>182 183</b> PPM	296 460 <LOD		Ntungamo	Core	GPH-FR
GeoChem REE	183-184m	<b>183 184</b> PPM	111 515	<b>706</b>	Ntungamo	Core	QGD-FR
GeoChem REE	184-185m	<b>184 185</b> PPM	151 <LOD <LOD		Ntungamo	Core	QGD-FR
GeoChem REE	185-186m	<b>185 186</b> PPM	<LOD <LOD	662	Ntungamo	Core	QGD+Qtz vein-FR
GeoChem REE	185-186m	<b>185 186</b> PPM	188 <LOD <LOD		Ntungamo	Core	QGD+Qtz vein-FR

GeoChem REE	186-187m	<b>186 187</b> PPM	366 <LOD <LOD	Ntungamo	Core	GPH-FR
GeoChem REE	187-188m	<b>187 188</b> PPM	282 581 <LOD	Ntungamo	Core	GPH-FR
GeoChem REE	188-189m	<b>188 189</b> PPM	328 <LOD 632	Ntungamo	Core	GPH-FR
GeoChem REE	188-189m	<b>188 189</b> PPM	373 <LOD <LOD	Ntungamo	Core	GPH-FR
GeoChem REE	189-190m	<b>189 190</b> PPM	306 <LOD <b>824</b>	Ntungamo	Core	GPH-FR
GeoChem REE	190-191m	<b>190 191</b> PPM	377 <LOD <LOD	Ntungamo	Core	GPH-FR
GeoChem REE	191-192m	<b>191 192</b> PPM	63 <LOD <b>905</b>	Ntungamo	Core	SMD-FR
GeoChem REE	192-193m	<b>192 193</b> PPM	165 <LOD <LOD	Ntungamo	Core	QGD-FR
GeoChem REE	192-193m	<b>192 193</b> PPM	323 <LOD <b>818</b>	Ntungamo	Core	GPH-FR
GeoChem REE	193-194m	<b>193 194</b> PPM	314 <LOD <LOD	Ntungamo	Core	GPH-FR
GeoChem REE	194-195m	<b>194 195</b> PPM	49 <LOD 658	Ntungamo	Core	SMD-FR
GeoChem REE	195-196m	<b>195 196</b> PPM	101 <LOD <LOD	Ntungamo	Core	SMD-FR
GeoChem REE	196-197m	<b>196 197</b> PPM	236 <LOD <LOD	Ntungamo	Core	GPH-FR
GeoChem REE	197-198m	<b>197 198</b> PPM	112 <LOD <LOD	Ntungamo	Core	QGD-FR
GeoChem REE	198-199m	<b>198 199</b> PPM	611 <LOD <b>845</b>	Ntungamo	Core	GPH-FR
GeoChem REE	199-200m	<b>199 200</b> PPM	119 <LOD <LOD	Ntungamo	Core	QGD-FR
GeoChem REE	200-201m	<b>200 201</b> PPM	345 <LOD <LOD	Ntungamo	Core	QGD-FR
GeoChem REE	201-202m	<b>201 202</b> PPM	238 <LOD <LOD	Ntungamo	Core	QGD-FR
GeoChem REE	202-203m	<b>202 203</b> PPM	268 <b>704 865</b>	Ntungamo	Core	QGD-FR
GeoChem REE	203-204m	<b>203 204</b> PPM	<b>1006</b> <LOD <LOD	Ntungamo	Core	GPH-FR
GeoChem REE	203-204m	<b>203 204</b> PPM	162 <LOD <b>751</b>	Ntungamo	Core	QGD-FR
GeoChem REE	204-205m	<b>204 205</b> PPM	<b>725</b> <LOD <LOD	Ntungamo	Core	QGD-FR
GeoChem REE	205-206m	<b>205 206</b> PPM	<b>2082</b> <LOD <LOD	Ntungamo	Core	QPEG-Mica-FR
GeoChem REE	205-206m	<b>205 206</b> PPM	<b>1739</b> <LOD <LOD	Ntungamo	Core	QPEG-Mica-FR
GeoChem REE	205-206m	<b>205 206</b> PPM	<b>1512</b> <LOD <LOD	Ntungamo	Core	QPEG-FR
GeoChem REE	206-207m	<b>206 207</b> PPM	<b>1448</b> 501 <b>708</b>	Ntungamo	Core	QPEG-FR
GeoChem REE	206-207m	<b>206 207</b> PPM	674 <LOD 673	Ntungamo	Core	QPEG-FR
GeoChem REE	206-207m	<b>206 207</b> PPM	0 <b>791 957</b>	Ntungamo	Core	QPEG-FR
GeoChem REE	207-208m	<b>207 208</b> PPM	<b>1433</b> 529 <LOD	Ntungamo	Core	QPEG-FR
GeoChem REE	207-208m	<b>207 208</b> PPM	<b>1609</b> 522 <LOD	Ntungamo	Core	QPEG-FR
GeoChem REE	208-209m	<b>208 209</b> PPM	530 <LOD <LOD	Ntungamo	Core	QGD-FR

personal use only

GeoChem REE	209-210m	<b>209 210</b> PPM	269 <LOD	790	Ntungamo	Core	QGD-FR	
GeoChem REE	210-211m	<b>210 211</b> PPM	316 <LOD	<LOD	Ntungamo	Core	QGD-FR	
GeoChem REE	211-212m	<b>211 212</b> PPM	414 <LOD	713	Ntungamo	Core	QGD-FR	
GeoChem REE	212-213m	<b>212 213</b> PPM	86 <LOD	636	Ntungamo	Core	QGD-FR	
GeoChem REE	213-214m	<b>213 214</b> PPM	141 <LOD	715	Ntungamo	Core	QGD-FR	
GeoChem REE	214-215m	<b>214 215</b> PPM	296 <LOD	<LOD	Ntungamo	Core	QGD-FR	
GeoChem REE	215-216m	<b>215 216</b> PPM	400 <LOD	<LOD	Ntungamo	Core	QGD-FR	
GeoChem REE	216-217m	<b>216 217</b> PPM	394 <LOD	1144	Ntungamo	Core	QGD-FR	
GeoChem REE	216-217m	<b>216 217</b> PPM	330 <LOD	<LOD	Ntungamo	Core	QGD S Vein-FR	
GeoChem REE	217-218m	<b>217 218</b> PPM	383	510	636	Ntungamo	Core	QGD-FR
GeoChem REE	218-219m	<b>218 219</b> PPM	326 <LOD	<LOD	Ntungamo	Core	QGD-FR	
GeoChem REE	219-220m	<b>219 220</b> PPM	109 <LOD	<LOD	Ntungamo	Core	QGD-FR	
GeoChem REE	220-221m	<b>220 221</b> PPM	396 <LOD	<LOD	Ntungamo	Core	QGD-FR	
GeoChem REE	221-222m	<b>221 222</b> PPM	284 <LOD	<LOD	Ntungamo	Core	QGD-FR	
GeoChem REE	222-223m	<b>222 223</b> PPM	435 <LOD	745	Ntungamo	Core	QGD-FR	
GeoChem REE	223-224m	<b>223 224</b> PPM	232 <LOD	<LOD	Ntungamo	Core	QGD-FR	
GeoChem REE	223-224m	<b>223 224</b> PPM	263	514	<LOD	Ntungamo	Core	QGD-FR
GeoChem REE	224-225m	<b>224 225</b> PPM	267 <LOD	677	Ntungamo	Core	QGD-FR	
GeoChem REE	224-225m	<b>224 225</b> PPM	292 <LOD	688	Ntungamo	Core	QGD-FR	
GeoChem REE	225-226m	<b>225 226</b> PPM	199 <LOD	<LOD	Ntungamo	Core	QGD fsp-FR	
GeoChem REE	225-226m	<b>225 226</b> PPM	422 <LOD	<LOD	Ntungamo	Core	QGD qtz-FR	
GeoChem REE	226-227m	<b>226 227</b> PPM	476 <LOD	<LOD	Ntungamo	Core	QGD-FR	
GeoChem REE	227-228m	<b>227 228</b> PPM	256 <LOD	<LOD	Ntungamo	Core	QGD fsp-FR	
GeoChem REE	227-228m	<b>227 228</b> PPM	341 <LOD	<LOD	Ntungamo	Core	QGD-FR	
GeoChem REE	228-229m	<b>228 229</b> PPM	334	518	691	Ntungamo	Core	QGD-FR
GeoChem REE	229-230m	<b>229 230</b> PPM	324 <LOD	<LOD	Ntungamo	Core	QGD-FR	
GeoChem REE	230-231m	<b>230 231</b> PPM	321 <LOD	663	Ntungamo	Core	QGD-FR	
GeoChem REE	231-232m	<b>231 232</b> PPM	330 <LOD	<LOD	Ntungamo	Core	QGD-FR	
GeoChem REE	232-233m	<b>232 233</b> PPM	316	584	958	Ntungamo	Core	QGD-FR
GeoChem REE	233-234m	<b>233 234</b> PPM	366 <LOD	729	Ntungamo	Core	QGD-FR	
GeoChem REE	234-235m	<b>234 235</b> PPM	233 <LOD	<LOD	Ntungamo	Core	QGD-FR	

GeoChem REE	235-236m	<b>235 236</b> PPM	353 <LOD	<b>714</b>	Ntungamo	Core	QGD-FR
GeoChem REE	236-237m	<b>236 237</b> PPM	316 <LOD	<LOD	Ntungamo	Core	QGD-FR
GeoChem REE	237-238m	<b>237 238</b> PPM	288 <LOD	<LOD	Ntungamo	Core	QGD-FR
GeoChem REE	238-239m	<b>238 239</b> PPM	226 <LOD	<LOD	Ntungamo	Core	QGD-FR
GeoChem REE	239-240m	<b>239 240</b> PPM	280 <LOD	<LOD	Ntungamo	Core	QGD-FR
GeoChem REE	239-240m	<b>239 240</b> PPM	257 <LOD	<LOD	Ntungamo	Core	QGD-FR
GeoChem REE	240-241m	<b>240 241</b> PPM	269 475	<b>785</b>	Ntungamo	Core	QGD-FR
GeoChem REE	241-242m	<b>241 242</b> PPM	199 519	<b>702</b>	Ntungamo	Core	QGD-BLK MIN
GeoChem REE	241-242m	<b>241 242</b> PPM	327 <LOD	<LOD	Ntungamo	Core	QGD
GeoChem REE	242-243m	<b>242 243</b> PPM	283 <LOD	<LOD	Ntungamo	Core	QGD
GeoChem REE	243-244m	<b>243 244</b> PPM	245 <LOD	<LOD	Ntungamo	Core	QGD
GeoChem REE	243-244m	<b>243 244</b> PPM	197 <LOD	<b>1123</b>	Ntungamo	Core	QGD
GeoChem REE	243-244m	<b>243 244</b> PPM	483 <LOD	<LOD	Ntungamo	Core	QGD-BLK MIN WHT VEIN
GeoChem REE	244-245m	<b>244 245</b> PPM	251 570	<b>769</b>	Ntungamo	Core	QGD-BLK MIN WHT VEIN
GeoChem REE	245-246m	<b>245 246</b> PPM	303 <LOD	<LOD	Ntungamo	Core	QGD
GeoChem REE	245-246m	<b>245 246</b> PPM	476 <LOD	<LOD	Ntungamo	Core	QGD-QRTZ
GeoChem REE	246-247m	<b>246 247</b> PPM	263 529	<LOD	Ntungamo	Core	QGD
GeoChem REE	247-248m	<b>247 248</b> PPM	221 <LOD	<LOD	Ntungamo	Core	QGD
GeoChem REE	248-249m	<b>248 249</b> PPM	269 494 669		Ntungamo	Core	QGD
GeoChem REE	249-250m	<b>249 250</b> PPM	308 <LOD	<LOD	Ntungamo	Core	QGD
GeoChem REE	249-250m	<b>249 250</b> PPM	444 <LOD	<LOD	Ntungamo	Core	QGD
GeoChem REE	250-251m	<b>250 251</b> PPM	423 513	<LOD	Ntungamo	Core	QGD
GeoChem REE	250-251m	<b>250 251</b> PPM	<b>1017</b> <LOD	<LOD	Ntungamo	Core	QPEG-FLD
GeoChem REE	250-251m	<b>250 251</b> PPM	12 <LOD	<b>733</b>	Ntungamo	Core	QPEG-QTZ
GeoChem REE	251-252m	<b>251 252</b> PPM	294 <LOD	<LOD	Ntungamo	Core	QGD
GeoChem REE	251-252m	<b>251 252</b> PPM	347 486 600		Ntungamo	Core	QGD
GeoChem REE	252-253m	<b>252 253</b> PPM	319 <LOD	<LOD	Ntungamo	Core	QGD
GeoChem REE	253-254m	<b>253 254</b> PPM	286 <LOD	<LOD	Ntungamo	Core	QGD
GeoChem REE	254-255m	<b>254 255</b> PPM	236 <LOD	<LOD	Ntungamo	Core	QGD
GeoChem REE	255-256m	<b>255 256</b> PPM	319 <LOD	<b>1036</b>	Ntungamo	Core	QGD
GeoChem REE	256-257m	<b>256 257</b> PPM	439 <LOD	<LOD	Ntungamo	Core	QGD

GeoChem REE	257-258m	<b>257</b>	<b>258</b>	PPM	395	<LOD	<LOD	Ntungamo	Core	QGD
GeoChem REE	257-258m	<b>257</b>	<b>258</b>	PPM	<b>1925</b>	<LOD	<b>839</b>	Ntungamo	Core	CPEG-MICA
GeoChem REE	257-258m	<b>257</b>	<b>258</b>	PPM	11	<LOD	<LOD	Ntungamo	Core	CPEG-QTZ
GeoChem REE	257-258m	<b>257</b>	<b>258</b>	PPM	23	<LOD	<LOD	Ntungamo	Core	CPEG-FLD
GeoChem REE	258-259m	<b>258</b>	<b>259</b>	PPM	<b>1323</b>	<LOD	<LOD	Ntungamo	Core	CPEG-FLD
GeoChem REE	258-259m	<b>258</b>	<b>259</b>	PPM	<b>1875</b>	477	<LOD	Ntungamo	Core	CPEG-MICA
GeoChem REE	259-260m	<b>259</b>	<b>260</b>	PPM	<b>1446</b>	550	<LOD	Ntungamo	Core	CPEG-FLD
GeoChem REE	260-261m	<b>260</b>	<b>261</b>	PPM	<b>786</b>	<LOD	<b>768</b>	Ntungamo	Core	CPEG-FSP
GeoChem REE	260-261m	<b>260</b>	<b>261</b>	PPM	<b>1228</b>	<LOD	<LOD	Ntungamo	Core	CPEG-FSP
GeoChem REE	260-261m	<b>260</b>	<b>261</b>	PPM	9	<LOD	<LOD	Ntungamo	Core	CPEG-QTZ
GeoChem REE	260-261m	<b>260</b>	<b>261</b>	PPM	<b>2100</b>	<LOD	<LOD	Ntungamo	Core	CPEG-MICA
GeoChem REE	261-262m	<b>261</b>	<b>262</b>	PPM	<b>1409</b>	546	<LOD	Ntungamo	Core	CPEG-FSP
GeoChem REE	261-262m	<b>261</b>	<b>262</b>	PPM	12	493	<LOD	Ntungamo	Core	CPEG-QTZ
GeoChem REE	261-262m	<b>261</b>	<b>262</b>	PPM	0	<LOD	<b>710</b>	Ntungamo	Core	CPEG-QTZ
GeoChem REE	262-263m	<b>262</b>	<b>263</b>	PPM	<b>1832</b>	<LOD	<b>716</b>	Ntungamo	Core	CPEG-FSP
GeoChem REE	263-264m	<b>263</b>	<b>264</b>	PPM	<b>1294</b>	466	<LOD	Ntungamo	Core	CPEG-FSP
GeoChem REE	263-264m	<b>263</b>	<b>264</b>	PPM	<b>1039</b>	<LOD	<b>902</b>	Ntungamo	Core	CPEG-FSP
GeoChem REE	263-264m	<b>263</b>	<b>264</b>	PPM	0	<LOD	<LOD	Ntungamo	Core	CPEG-QTZ
GeoChem REE	263-264m	<b>263</b>	<b>264</b>	PPM	<b>2090</b>	<LOD	<LOD	Ntungamo	Core	CPEG-MICA
GeoChem REE	264-265m	<b>264</b>	<b>265</b>	PPM	<b>2068</b>	<LOD	671	Ntungamo	Core	CPEG-MICA
GeoChem REE	264-265m	<b>264</b>	<b>265</b>	PPM	0	572	<b>813</b>	Ntungamo	Core	CPEG-QTZ
GeoChem REE	264-265m	<b>264</b>	<b>265</b>	PPM	<b>996</b>	557	<LOD	Ntungamo	Core	CPEG-FSP
GeoChem REE	265-266m	<b>265</b>	<b>266</b>	PPM	<b>1390</b>	<LOD	<b>716</b>	Ntungamo	Core	CPEG-FSP
GeoChem REE	265-266m	<b>265</b>	<b>266</b>	PPM	<b>1872</b>	<LOD	<LOD	Ntungamo	Core	CPEG-MICA
GeoChem REE	265-266m	<b>265</b>	<b>266</b>	PPM	<b>1083</b>	<LOD	<LOD	Ntungamo	Core	CPEG-MICA
GeoChem REE	266-267m	<b>266</b>	<b>267</b>	PPM	<b>1280</b>	<LOD	<LOD	Ntungamo	Core	CPEG-FSP
GeoChem REE	266-267m	<b>266</b>	<b>267</b>	PPM	382	<LOD	<LOD	Ntungamo	Core	QGD
GeoChem REE	267-268m	<b>267</b>	<b>268</b>	PPM	337	<LOD	<LOD	Ntungamo	Core	QGD
GeoChem REE	268-269m	<b>268</b>	<b>269</b>	PPM	189	<LOD	<LOD	Ntungamo	Core	QGD
GeoChem REE	269-270m	<b>269</b>	<b>270</b>	PPM	320	516	<LOD	Ntungamo	Core	QGD
GeoChem REE	270-271m	<b>270</b>	<b>271</b>	PPM	472	<LOD	<LOD	Ntungamo	Core	QGD

personal use only

GeoChem REE	270-271m	<b>270 271</b> PPM	2114	392	890	Ntungamo	Core	CPEG-Mica
GeoChem REE	270-271m	<b>270 271</b> PPM	1437	<LOD	<LOD	Ntungamo	Core	CPEG-Fsp
GeoChem REE	271-272m	<b>271 272</b> PPM	674	778	<LOD	Ntungamo	Core	CPEG-Fsp
GeoChem REE	271-272m	<b>271 272</b> PPM	344	<LOD	1054	Ntungamo	Core	QGD
GeoChem REE	272-273m	<b>272 273</b> PPM	498	<LOD	641	Ntungamo	Core	QGD
GeoChem REE	273-274m	<b>273 274</b> PPM	423	480	679	Ntungamo	Core	QGD
GeoChem REE	273-274m	<b>273 274</b> PPM	16	<LOD	<LOD	Ntungamo	Core	CPEG-Qtz
GeoChem REE	273-274m	<b>273 274</b> PPM	1585	<LOD	<LOD	Ntungamo	Core	CPEG-Fsp
GeoChem REE	273-274m	<b>273 274</b> PPM	2420	<LOD	<LOD	Ntungamo	Core	CPEG-Mica
GeoChem REE	274-275m	<b>274 275</b> PPM	277	<LOD	<LOD	Ntungamo	Core	QGD
GeoChem REE	275-276m	<b>275 276</b> PPM	269	<LOD	<LOD	Ntungamo	Core	QGD
GeoChem REE	276-277m	<b>276 277</b> PPM	267	<LOD	<LOD	Ntungamo	Core	QGD
GeoChem REE	277-278m	<b>277 278</b> PPM	784	<LOD	<LOD	Ntungamo	Core	QGD
GeoChem REE	277-278m	<b>277 278</b> PPM	1677	<LOD	726	Ntungamo	Core	CPEG-Fsp
GeoChem REE	278-279m	<b>278 279</b> PPM	339	<LOD	<LOD	Ntungamo	Core	QGD
GeoChem REE	279-280m	<b>279 280</b> PPM	297	<LOD	<LOD	Ntungamo	Core	QGD
GeoChem REE	280-281m	<b>280 281</b> PPM	325	634	679	Ntungamo	Core	QGD
GeoChem REE	281-282m	<b>281 282</b> PPM	218	<LOD	<LOD	Ntungamo	Core	QGD
GeoChem REE	282-283m	<b>282 283</b> PPM	280	<LOD	<LOD	Ntungamo	Core	QGD
GeoChem REE	283-284m	<b>283 284</b> PPM	272	<LOD	<LOD	Ntungamo	Core	QGD
GeoChem REE	284-285m	<b>284 285</b> PPM	248	<LOD	<LOD	Ntungamo	Core	QGD
GeoChem REE	285-286m	<b>285 286</b> PPM	285	<LOD	652	Ntungamo	Core	QGD
GeoChem REE	286-287m	<b>286 287</b> PPM	323	578	776	Ntungamo	Core	QGD
GeoChem REE	287-288m	<b>286 287</b> PPM	1281	<LOD	<LOD	Ntungamo	Core	CPEG-Fsp
GeoChem REE	287-288m	<b>287 288</b> PPM	439	467	<LOD	Ntungamo	Core	QGD
GeoChem REE	288-289m	<b>288 289</b> PPM	293	<LOD	711	Ntungamo	Core	QGD
GeoChem REE	289-290m	<b>289 290</b> PPM	271	<LOD	689	Ntungamo	Core	QGD
GeoChem REE	290-291m	<b>290 291</b> PPM	325	<LOD	<LOD	Ntungamo	Core	QGD
GeoChem REE	291-292m	<b>291 292</b> PPM	351	<LOD	691	Ntungamo	Core	QGD
GeoChem REE	292-293m	<b>292 293</b> PPM	256	<LOD	<LOD	Ntungamo	Core	QGD
GeoChem REE	293-294m	<b>293 294</b> PPM	333	535	<LOD	Ntungamo	Core	QGD

personal use only

GeoChem REE	294-295m	<b>294 295</b> PPM	308 <LOD <LOD	Ntungamo	Core	QGD
GeoChem REE	295-296m	<b>295 296</b> PPM	326 <LOD	768 Ntungamo	Core	QGD
GeoChem REE	296-297m	<b>296 297</b> PPM	320 <LOD	817 Ntungamo	Core	QGD
GeoChem REE	297-298m	<b>297 298</b> PPM	314 <LOD <LOD	Ntungamo	Core	QGD
GeoChem REE	298-299m	<b>298 299</b> PPM	326 <LOD <LOD	Ntungamo	Core	QGD
GeoChem REE	299-300m	<b>299 300</b> PPM	331 <LOD <LOD	Ntungamo	Core	QGD
GeoChem REE	300-301m	<b>300 301</b> PPM	301 545	703 Ntungamo	Core	QGD
GeoChem REE	301-302m	<b>301 302</b> PPM	298 <LOD <LOD	Ntungamo	Core	QGD
GeoChem REE	302-303m	<b>302 303</b> PPM	293 <LOD <LOD	Ntungamo	Core	QGD
GeoChem REE	303-304m	<b>303 304</b> PPM	272 504 <LOD	Ntungamo	Core	QGD
GeoChem REE	304-305m	<b>304 305</b> PPM	246 <LOD <LOD	Ntungamo	Core	QGD
GeoChem REE	304-305m	<b>304 305</b> PPM	281 <LOD	707 Ntungamo	Core	QPEG
GeoChem REE	305-306m	<b>305 306</b> PPM	285 <LOD <LOD	Ntungamo	Core	QPEG
GeoChem REE	305-306m	<b>305 306</b> PPM	249 <LOD <LOD	Ntungamo	Core	QPEG
GeoChem REE	306-307m	<b>306 307</b> PPM	265 <LOD <LOD	Ntungamo	Core	QGD
GeoChem REE	307-308m	<b>307 308</b> PPM	195 <LOD <LOD	Ntungamo	Core	QGD
GeoChem REE	308-309m	<b>308 309</b> PPM	205 <LOD	607 Ntungamo	Core	QGD
GeoChem REE	309-310m	<b>309 310</b> PPM	297 <LOD <LOD	Ntungamo	Core	QGD
GeoChem REE	310-311m	<b>310 311</b> PPM	244 569 <LOD	Ntungamo	Core	QGD
GeoChem REE	310-311m	<b>310 311</b> PPM	323 <LOD	788 Ntungamo	Core	QGD
GeoChem REE	311-312m	<b>311 312</b> PPM	271 454 <LOD	Ntungamo	Core	QGD
GeoChem REE	312-313m	<b>312 313</b> PPM	294 <LOD <LOD	Ntungamo	Core	QGD
GeoChem REE	312-313m	<b>312 313</b> PPM	294 <LOD <LOD	Ntungamo	Core	QGD
GeoChem REE	313-314m	<b>313 314</b> PPM	243 486 <LOD	Ntungamo	Core	QGD
GeoChem REE	313-314m	<b>313 314</b> PPM	269 <LOD	611 Ntungamo	Core	QGD
GeoChem REE	314-315m	<b>314 315</b> PPM	241 <LOD <LOD	Ntungamo	Core	QGD
GeoChem REE	315-316m	<b>315 316</b> PPM	280 <LOD <LOD	Ntungamo	Core	QGD
GeoChem REE	316-317m	<b>316 317</b> PPM	339 <LOD <LOD	Ntungamo	Core	QGD
GeoChem REE	316-317m	<b>316 317</b> PPM	259 560	662 Ntungamo	Core	QGD
GeoChem REE	317-318m	<b>317 318</b> PPM	235 <LOD	634 Ntungamo	Core	QGD
GeoChem REE	318-319m	<b>318 319</b> PPM	289 <LOD <LOD	Ntungamo	Core	QGD

GeoChem REE	319-320m	<b>319 320</b> PPM	279 <LOD	<b>912</b>	Ntungamo	Core	QGD
GeoChem REE	319-320m	<b>319 320</b> PPM	236 479	<b>802</b>	Ntungamo	Core	QGD
GeoChem REE	320-321m	<b>320 321</b> PPM	288 <LOD	<b>706</b>	Ntungamo	Core	QGD
GeoChem REE	321-322m	<b>321 322</b> PPM	264 <LOD	<LOD	Ntungamo	Core	QGD
GeoChem REE	321-322m	<b>321 322</b> PPM	213 606	690	Ntungamo	Core	QGD
GeoChem REE	322-323m	<b>322 323</b> PPM	284 <LOD	<LOD	Ntungamo	Core	QGD
GeoChem REE	323-324m	<b>323 324</b> PPM	374 <LOD	675	Ntungamo	Core	QGD
GeoChem REE	324-325m	<b>324 325</b> PPM	272 <LOD	<LOD	Ntungamo	Core	QGD
GeoChem REE	325-326m	<b>325 326</b> PPM	289 <LOD	<b>724</b>	Ntungamo	Core	QGD
GeoChem REE	326-327m	<b>326 327</b> PPM	290 <LOD	665	Ntungamo	Core	QGD
GeoChem REE	327-328m	<b>327 328</b> PPM	378 <LOD	<LOD	Ntungamo	Core	QGD
GeoChem REE	327-328m	<b>327 328</b> PPM	14 <LOD	<LOD	Ntungamo	Core	CPEG-Fsp
GeoChem REE	327-328m	<b>327 328</b> PPM	<b>1216</b> <LOD	<LOD	Ntungamo	Core	CPEG-Fsp
GeoChem REE	327-328m	<b>327 328</b> PPM	10 438	<LOD	Ntungamo	Core	CPEG-Qtz
GeoChem REE	328-329m	<b>328 329</b> PPM	326 684	<LOD	Ntungamo	Core	QGD
GeoChem REE	329-330m	<b>329 330</b> PPM	285 544	609	Ntungamo	Core	QGD
GeoChem REE	330-331m	<b>330 331</b> PPM	292 <LOD	<LOD	Ntungamo	Core	QGD
GeoChem REE	331-332m	<b>331 332</b> PPM	246 <LOD	<LOD	Ntungamo	Core	QGD
GeoChem REE	332-333m	<b>332 333</b> PPM	247 476	<LOD	Ntungamo	Core	QGD
GeoChem REE	333-334m	<b>333 334</b> PPM	250 <LOD	<LOD	Ntungamo	Core	QGD
GeoChem REE	334-335m	<b>334 335</b> PPM	255 <LOD	<LOD	Ntungamo	Core	QGD
GeoChem REE	335-336m	<b>335 336</b> PPM	236 <LOD	<LOD	Ntungamo	Core	QGD
GeoChem REE	336-337m	<b>336 337</b> PPM	306 <LOD	<b>796</b>	Ntungamo	Core	QGD
GeoChem REE	337-338m	<b>337 338</b> PPM	417 <LOD	668	Ntungamo	Core	QGD
GeoChem REE	338-339m	<b>338 339</b> PPM	517 514	<LOD	Ntungamo	Core	QGD
GeoChem REE	338-339m	<b>338 339</b> PPM	22 <LOD	<b>731</b>	Ntungamo	Core	CPEG-Qtz
GeoChem REE	338-339m	<b>338 339</b> PPM	<LOD <LOD	<LOD	Ntungamo	Core	CPEG-WHITE
GeoChem REE	338-339m	<b>338 339</b> PPM	<b>715</b> <LOD	<b>988</b>	Ntungamo	Core	CPEG-FSP
GeoChem REE	339-340m	<b>339 340</b> PPM	390 <LOD	<b>761</b>	Ntungamo	Core	QGD
GeoChem REE	339-340m	<b>339 340</b> PPM	13 <LOD	<LOD	Ntungamo	Core	QPEG
GeoChem REE	340-341m	<b>340 341</b> PPM	296 <LOD	<b>802</b>	Ntungamo	Core	QGD

GeoChem REE	341-342m	<b>341 342</b> PPM	306	<LOD	<LOD	Ntungamo	Core	QPEG
GeoChem REE	342-343m	<b>342 343</b> PPM	288	567	<LOD	Ntungamo	Core	QPEG
GeoChem REE	343-344m	<b>343 344</b> PPM	<b>1001</b>	<LOD	<LOD	Ntungamo	Core	QGD
GeoChem REE	344-345m	<b>344 345</b> PPM	13	621	<b>953</b>	Ntungamo	Core	CPEG-Qtz
GeoChem REE	344-345m	<b>344 345</b> PPM	23	<LOD	<LOD	Ntungamo	Core	CPEG-FSP
GeoChem REE	344-345m	<b>344 345</b> PPM	<b>1304</b>	<LOD	<b>970</b>	Ntungamo	Core	CPEG-FSP
GeoChem REE	344-345m	<b>344 345</b> PPM	<b>1293</b>	<LOD	552	Ntungamo	Core	CPEG-MICA
GeoChem REE	344-345m	<b>344 345</b> PPM	48	495	526	Ntungamo	Core	CPEG-GARNET
GeoChem REE	345-346m	<b>345 346</b> PPM	363	<LOD	<LOD	Ntungamo	Core	QGD
GeoChem REE	346-347m	<b>346 347</b> PPM	345	<LOD	<LOD	Ntungamo	Core	QGD
GeoChem REE	347-348m	<b>347 348</b> PPM	285	<LOD	<b>1084</b>	Ntungamo	Core	QGD
GeoChem REE	347-348m	<b>347 348</b> PPM	262	601	<LOD	Ntungamo	Core	QGD
GeoChem REE	348-349m	<b>348 349</b> PPM	273	<LOD	<LOD	Ntungamo	Core	QGD
GeoChem REE	348-349m	<b>348 349</b> PPM	285	<LOD	<LOD	Ntungamo	Core	QGD
GeoChem REE	349-350m	<b>349 350</b> PPM	369	<LOD	<b>892</b>	Ntungamo	Core	QGD
GeoChem REE	350-351m	<b>350 351</b> PPM	311	<LOD	<b>787</b>	Ntungamo	Core	QGD
GeoChem REE	351-352m	<b>351 352</b> PPM	<LOD	495	<LOD	Ntungamo	Core	CPEG-Qtz
GeoChem REE	351-352m	<b>351 352</b> PPM	<b>2471</b>	<LOD	<LOD	Ntungamo	Core	CPEG-Fsp
GeoChem REE	351-352m	<b>351 352</b> PPM	12	<LOD	<b>720</b>	Ntungamo	Core	CPEG-Fsp
GeoChem REE	352-353m	<b>352 353</b> PPM	282	<LOD	<LOD	Ntungamo	Core	CPEG-Gt+Cor
GeoChem REE	352-353m	<b>352 353</b> PPM	<LOD	<LOD	<LOD	Ntungamo	Core	CPEG-Qtz
GeoChem REE	352-353m	<b>352 353</b> PPM	40	<LOD	<LOD	Ntungamo	Core	CPEG-Fsp?
GeoChem REE	352-353m	<b>352 353</b> PPM	26	<LOD	<LOD	Ntungamo	Core	CPEG-Fsp
GeoChem REE	353-354m	<b>353 354</b> PPM	450	<LOD	<b>893</b>	Ntungamo	Core	QGD
GeoChem REE	354-355m	<b>354 355</b> PPM	355	<LOD	642	Ntungamo	Core	QGD
GeoChem REE	355-356m	<b>355 356</b> PPM	274	<LOD	<b>1081</b>	Ntungamo	Core	QGD
GeoChem REE	356-357m	<b>356 357</b> PPM	252	<LOD	<LOD	Ntungamo	Core	QGD
GeoChem REE	357-358m	<b>357 358</b> PPM	274	<LOD	<LOD	Ntungamo	Core	QGD
GeoChem REE	358-359m	<b>358 359</b> PPM	320	<LOD	<LOD	Ntungamo	Core	QGD
GeoChem REE	359-360m	<b>359 360</b> PPM	245	<LOD	<LOD	Ntungamo	Core	QGD
GeoChem REE	360-361m	<b>360 361</b> PPM	309	<LOD	<LOD	Ntungamo	Core	QGD

personal use only

GeoChem REE	361-362m	<b>361 362</b> PPM	342 <LOD <LOD	Ntungamo	Core	QGD
GeoChem REE	362-363m	<b>362 363</b> PPM	305 <LOD <LOD	Ntungamo	Core	QGD
GeoChem REE	363-364m	<b>363 364</b> PPM	340 <LOD <LOD	Ntungamo	Core	QGD
GeoChem REE	364-365m	<b>364 365</b> PPM	254 <LOD <LOD	Ntungamo	Core	QGD
GeoChem REE	365-366m	<b>365 366</b> PPM	320 <LOD <LOD	Ntungamo	Core	QGD
GeoChem REE	366-367m	<b>366 367</b> PPM	243 <LOD <LOD	Ntungamo	Core	QGD
GeoChem REE	367-368m	<b>367 368</b> PPM	284 <LOD <LOD	Ntungamo	Core	QGD
GeoChem REE	368-369m	<b>368 369</b> PPM	317 <b>714</b> <LOD	Ntungamo	Core	QGD
GeoChem REE	369-370m	<b>369 370</b> PPM	316 <LOD <LOD	Ntungamo	Core	QGD
GeoChem REE	370-371m	<b>370 371</b> PPM	251 561 <LOD	Ntungamo	Core	QGD
GeoChem REE	371-372m	<b>371 372</b> PPM	281 <LOD <LOD	Ntungamo	Core	QGD
GeoChem REE	372-373m	<b>372 373</b> PPM	277 <LOD <LOD	Ntungamo	Core	QGD
GeoChem REE	373-374m	<b>373 374</b> PPM	281 <LOD <LOD	Ntungamo	Core	QGD
GeoChem REE	374-375m	<b>374 375</b> PPM	296 <LOD <LOD	Ntungamo	Core	QGD
GeoChem REE	375-376m	<b>375 376</b> PPM	255 <LOD <LOD	Ntungamo	Core	QGD
GeoChem REE	376-377m	<b>376 377</b> PPM	361 508 <LOD	Ntungamo	Core	QGD
GeoChem REE	377-378m	<b>377 378</b> PPM	269 506 <b>963</b>	Ntungamo	Core	QGD
GeoChem REE	378-379m	<b>378 379</b> PPM	329 <LOD <b>823</b>	Ntungamo	Core	QGD
GeoChem REE	378-379m	<b>378 379</b> PPM	511 <LOD <LOD	Ntungamo	Core	CPEG
GeoChem REE	379-380m	<b>379 380</b> PPM	<b>1167</b> <LOD <b>1151</b>	Ntungamo	Core	CPEG-FSP
GeoChem REE	379-380m	<b>379 380</b> PPM	319 <LOD 655	Ntungamo	Core	QGD
GeoChem REE	380-381m	<b>380 381</b> PPM	297 <LOD <LOD	Ntungamo	Core	QGD
GeoChem REE	381-382m	<b>381 382</b> PPM	276 <LOD <LOD	Ntungamo	Core	QGD
GeoChem REE	382-383m	<b>382 383</b> PPM	306 <LOD <b>703</b>	Ntungamo	Core	QGD
GeoChem REE	383-384m	<b>383 384</b> PPM	298 609 <LOD	Ntungamo	Core	QGD
GeoChem REE	384-385m	<b>384 385</b> PPM	238 <LOD <LOD	Ntungamo	Core	QGD
GeoChem REE	385-386m	<b>385 386</b> PPM	249 <LOD <LOD	Ntungamo	Core	QGD
GeoChem REE	385-386m	<b>385 386</b> PPM	<LOD <LOD <LOD	Ntungamo	Core	QGD-QTZ
GeoChem REE	386-387m	<b>386 387</b> PPM	278 <LOD <LOD	Ntungamo	Core	QGD

E.O.H

personal use only

GPH	Phyllite
GSL	Slate
GST	Schist
GXS	Felsic schist
CPEG	Coarse pegmatite
FPEG	Fine pegmatite
MPEG	Micaceous pegmatite
QPEG	Quartz pegmatite
QGD	Quartz Granitoid
SMD	Mudstone

SW - Strongly Weathered
MW - Moderately Weathered
WW - Weakly Weathered
FR - Fresh Rock

personal use only