

ASX Announcement

18 March 2025

Intrusion Related Copper Targets Identified at Conglomerate Creek

MT ISA NORTH COPPER-URANIUM PROJECT

Key Highlights:

- Multiple drill targets identified using high-definition gravity and magnetic datasets
- 2km wide intrusive body, associated with significant structures and discrete gravity-magnetic anomalies identified
- Potential for large-scale Mt Isa style Iron Oxide Copper Gold (IOCG) or other intrusion-related mineralisation styles
- AM5 has appointed experienced geologist Matthew Porter as Exploration Manager

Antares Metals Ltd (ASX: AM5) (Antares, AM5 or the Company) is pleased to announce that it has identified multiple compelling drill targets on the Conglomerate Creek Copper Prospect, part of the Mt Isa North Copper-Uranium Project in northwest Queensland.

The high-definition gravity and magnetic surveys¹ completed over the Conglomerate Creek² Prospect and the subsequent data inversion, produced a 3D view of the area's subsurface magnetic and gravity characteristics. The inversion identified a large mineral system-scale igneous intrusion about 2km in diameter, which is associated with several large structures in the area. A secondary intrusion to the northeast was also identified from the inversion.

Several discrete gravity anomalies associated with the area's major structures and coincident discrete magnetic features have been identified as high-priority targets.

These new Conglomerate Creek targets are obscured beneath sediments and have not been identified or tested by previous exploration. They represent significant discovery potential in a region with known intrusion-related copper-gold mineralisation potential.

The Company is pleased to announce these highly encouraging targets to the market and looks forward to drilling and testing them as soon as possible after completing the second phase of reverse circulation (RC) drilling on the extensional targets identified at its Surprise copper project.

¹ ASX: 12 Dec 2024 - Geophysical work underway to identify large-scale copper targets at Conglomerate Creek

² ASX: 6 Feb 2025 - Geophysical surveys identify targets at Conglomerate Creek

ANTARES
METALS LIMITED
ASX : AM5

DIRECTORS & MANAGEMENT

Mark Connelly
NE Chairman

Johan Lambrechts
CEO

Bruno Seneque
NE Director

Richard Maddocks
NE Director

Suzie Foreman
CFO & CoSec

CONTACT

Level 1, 43 Ventnor Ave,
West Perth, WA, 6005
info@antaresmetals.com.au
antaresmetals.com.au

For personal use only

Chief Executive Officer, Johan Lambrechts, commented:

"We have spent significant time and money on acquiring the geophysical data, inverting and interpreting it to identify these exciting drill targets beneath the surface. After a similar process at Surprise, we are also now poised to explore the non-outcropping, subsurface extensions of the mineralisation."

"Although maiden drill programs into untested, sub-surface targets can be daunting, we are excited by the potential of discovering something new. Intrusion-related copper-gold mineralisation systems have the potential to be large, and identifying one could be a significant milestone for the Company. We look forward to testing these targets after drilling Surprise and will keep our investors informed as we progress."

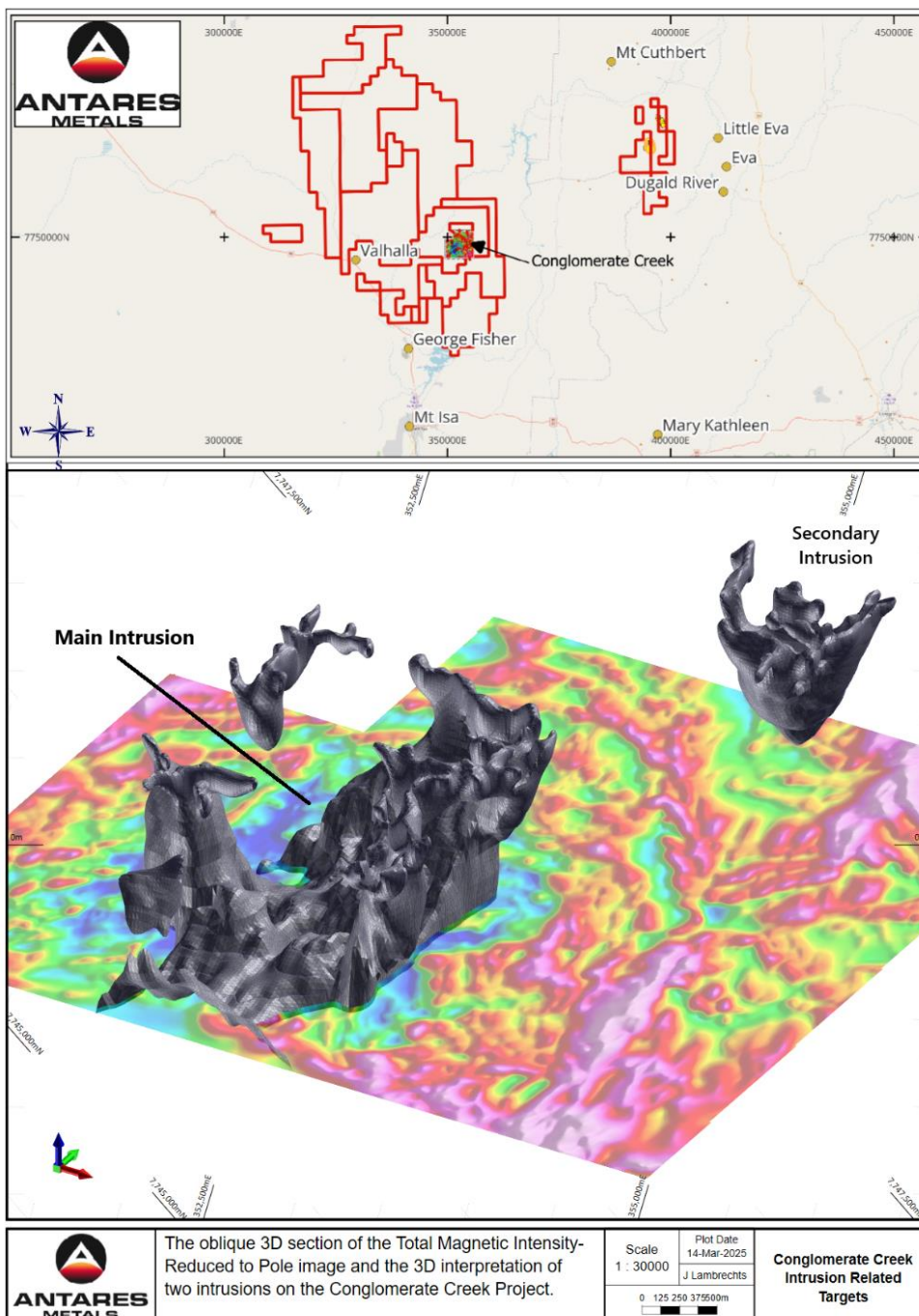


Figure 1: 3D Oblique section of the intrusions identified at Conglomerate Creek

Mineral System-Scale Intrusion Identified

Terra Resources, a Perth-based geophysical consultant, processed, inverted, and interpreted the magnetic and gravity data. The inversion produced a three-dimensional image representing the magnetic and gravity characteristics of the rocks beneath the surface.

Two discrete intrusions became evident, one of which is of mineral system scale and has a diameter of about 2km. The secondary intrusion is located to the northeast and is smaller, but it is still an intriguing target that will be investigated at a later stage.

The main intrusion is located at the convergence of several large structures. It is interpreted that this increases its mineralisation potential since the heat generated by the emplacement may activate the mobilisation and remobilisation of metals from their host rocks along the fluid pathways and into potential mineral traps along the structures. Sediment sample results from open-file data (QLD geological survey)³ cover the eastern extent of the intrusion, with very limited data available for the remainder of the area (refer Figure 3).

Reviewing this data identified a copper anomaly greater than 100 ppm along the eastern edge of the intrusion. The elevated surface copper anomaly is interpreted to be associated with the area's major structures. This open file data supports the interpretation of the intrusion-related mineralisation system by showing increased copper animalism along the structures, as expected in such mineralised systems.

Targets Identified

Interpreting the data highlighted several discrete gravity anomalies associated with major structures in the area and, additionally, with discrete magnetic features identified by the Company's high-definition magnetic survey.

Some targets also include linear magnetic low anomalies coinciding with the discrete gravity high features. This may indicate the demagnetisation of rocks by alteration caused by the hot fluids travelling through the structure. In these cases, a discrete magnetic high is visible near the gravity body, representing an enticing drill target.

Several targets have been identified from the geophysics program. All but one is also associated with the edge of the intrusion, where the intense heat of the intrusion in contact with the country rock, may mobilise mineralised fluids through local structures. The targets that are more central to the intrusion, are closely associated with major structures, and coincident gravity and magnetic anomalies. Figure 2 depicts the targets along with the geophysical data.

³ NOTE: AM5 did not validate the assay data represented in the open file QLD geological survey database. It is expected that the data was validated by the original owners prior to inclusion into the open file database.

For personal use only

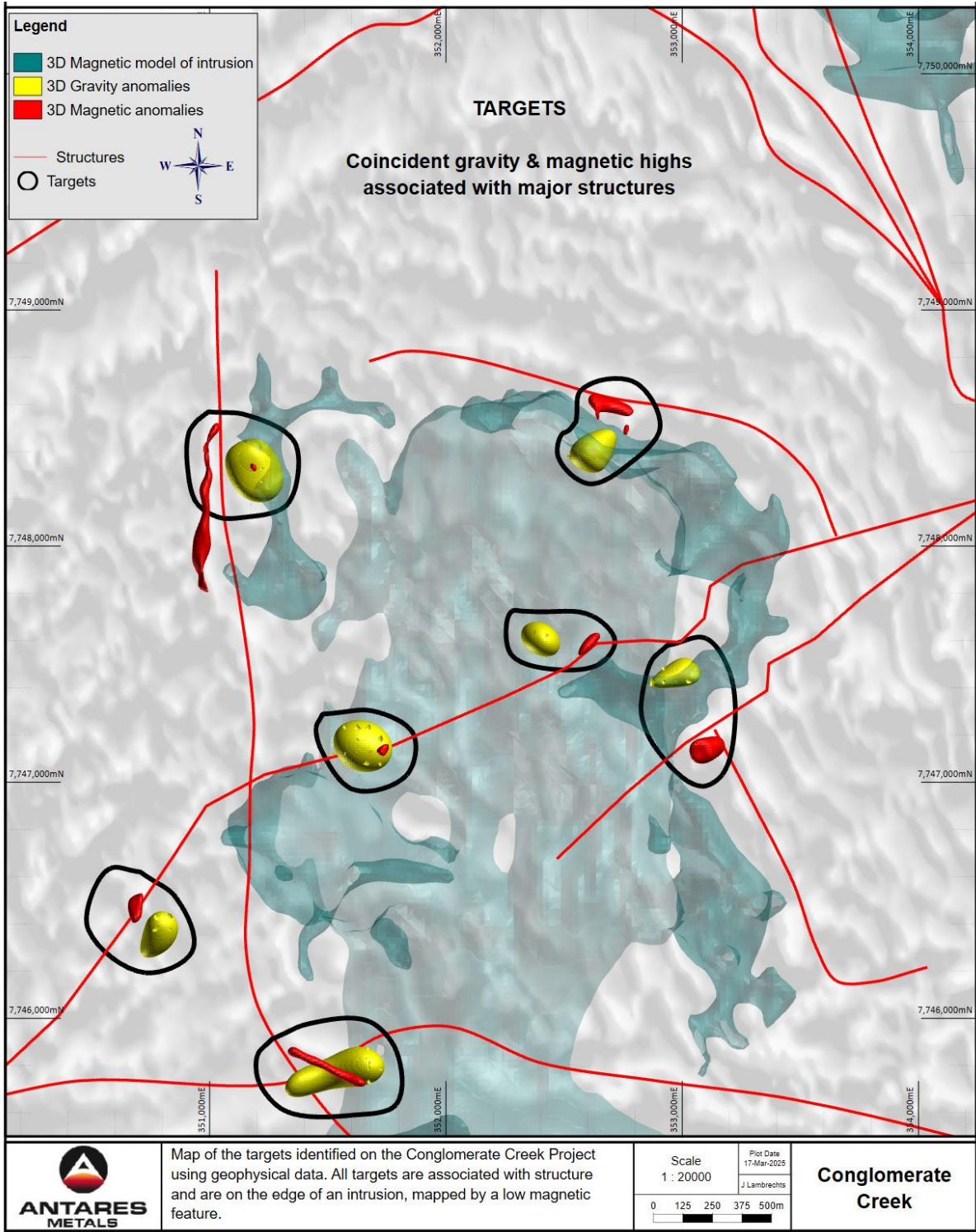


Figure 2: Map of the targets identified at the Conglomerate Creek Copper Project

For personal use only

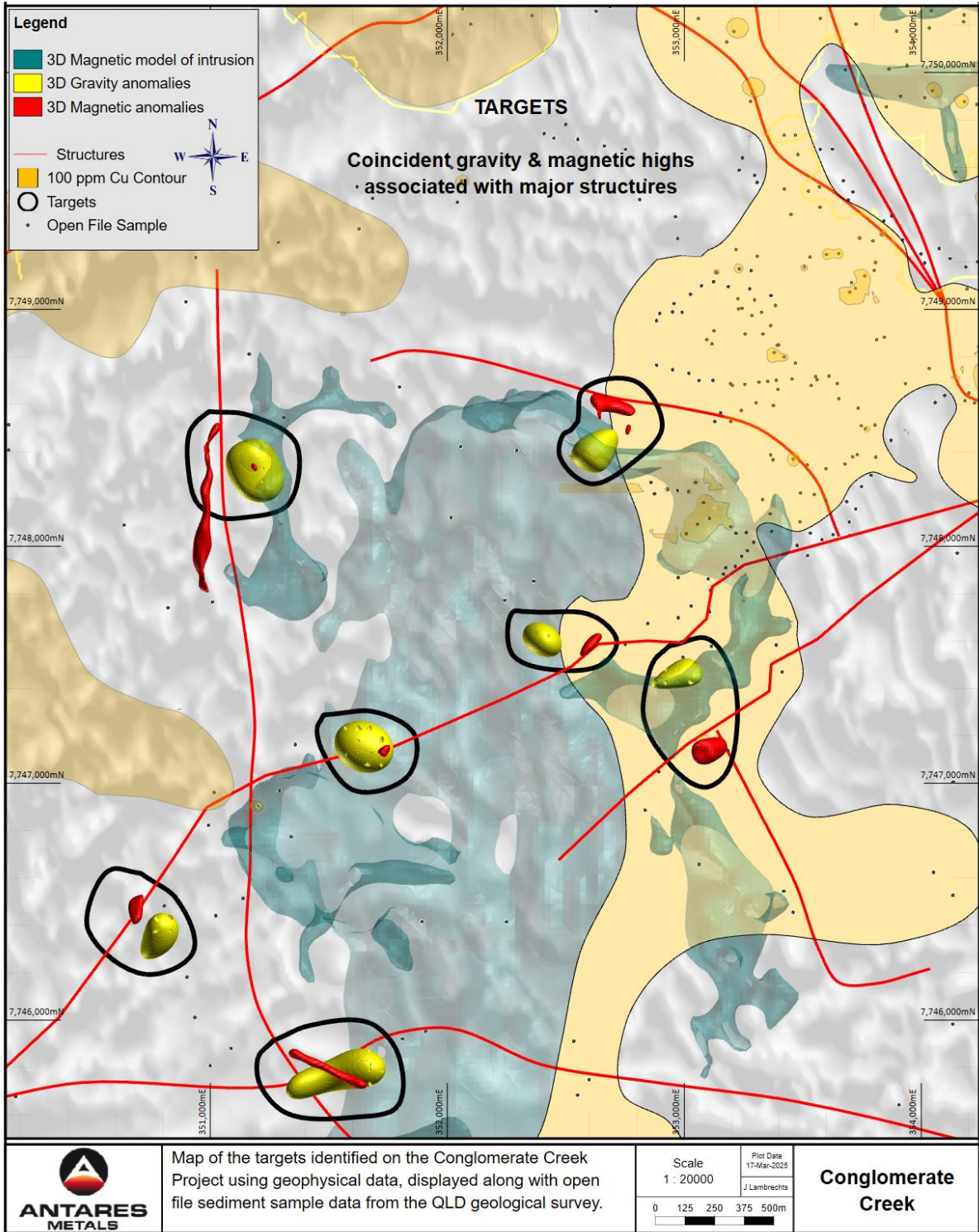


Figure 3: Map of the targets identified on the Conglomerate Creek Copper Project with the open-file sediment sample data, (QLD Geological Survey)

Experienced Exploration Manager Appointed

Antares is thrilled to announce the appointment of experienced Exploration Manager, Matthew Porter. Matt has over 25 years' experience, predominantly in Queensland including over five years with Sandfire Resources and three years targeting uranium with Paladin Energy. Matt has worked extensively in the Mt Isa region and knows the area well.

"Matt joins us at a critical time for the Company, with the commencement of a very busy exploration season on our Mt Isa North Project. There is a lot of data for him to come to grips with, but he has already shown his commitment and work ethic, and I'm thrilled to have him leading our exploration efforts going forward.

"Matt has a detailed and extensive knowledge of the mineral systems in the Mt Isa Inlier and the area in general. He will be a key component of the Company's ability to deliver successfully on our objectives.", Johan Lambrechts

Next Steps

The Company is very encouraged by the targets identified by the interpretation of the geophysical data collected on the Conglomerate Creek Prospect and aims to drill test these targets as soon as possible after completing the drilling of the targets identified on the Surprise Copper Prospect.

Approvals and work required to commence the second phase of drilling on Surprise is nearing completion. On ground and environmental clearances are planned as soon as possible. Once cultural heritage clearance is obtained, the Company will prepare access tracks and drill pads.

The Company will do site-specific geological reconnaissance over the three target areas to ensure the best possible drill targeting is done. Discussions with drilling contractors are advanced, and a final contract decision will be made imminently.

It is anticipated that drilling will commence in April and take about a week to complete.

The Company will reconnoitre the targets identified on Conglomerate Creek (at the surface) soon after the Surprise Phase 2 drilling is completed in preparation for the drilling of those targets.

The Company is funded to complete the work programs for the coming season and looks forward to keeping its shareholders updated on its activities.

-ENDS-

This announcement has been approved for release by the Board of Antares Metals Limited.

Enquiries:
Johan Lambrechts
Chief Executive Officer
Antares Metals Limited
E: johan@antaresmetals.com.au

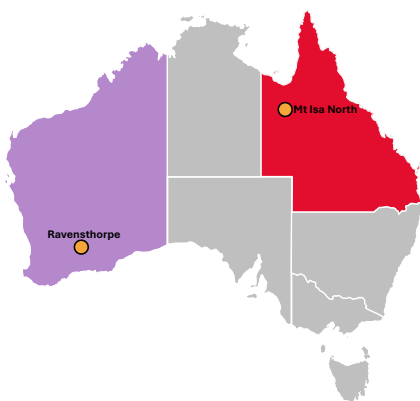
Competent Person Statement:

The information in this report that relates to Exploration Targets, Exploration Results, Mineral Resources, Historical Mineral Resources or Ore Reserves has been approved by Mr. Johan Lambrechts, a Competent Person who is a member of The Australasian Institute of Geoscientists and is the Chief Executive Officer of Antares Metals Limited.

Mr Lambrechts has sufficient experience that is relevant to the style of mineralisation and type of deposit under consideration and to the activity being undertaken to qualify as a Competent Person as defined in the 2012 Edition of the 'Australasian Code for Reporting of Exploration Results, Mineral Resources and Ore Reserves'. Mr Lambrechts consents to the inclusion in the report of the matters based on his information in the form and context in which it appears. Mr. Lambrechts holds securities in the company.

About Antares Metals

Antares Metals is a multi-commodity, Australian-focused explorer with two district-scale exploration hubs. The Company uses modern exploration methods and models to develop cost-effective exploration programs focused on discovery.



Mt Isa North Cu-U Project

- ▶ 2,003km² of prime tenure at Mt Isa, adjoining Glencore's Mt Isa Operations
- ▶ Right geology for discovery of Cu, Zn-Ag-Pb, U₃O₈ and REE deposits
- ▶ Limited historical exploration
- ▶ Modern exploration model and methods to be employed

Resource Citations

Glencore. (2023). *Annual Report - 2023*. Glencore.

Harmony . (2024). *Mineral resources and mineral reserves 30 June 2024*. Harmony Gold Ltd.

MMG. (2023). *MMG-Annual report 2023*. MMG.

Appendix 1 - JORC Code, 2012 Edition – Table 1

Section 1 Sampling Techniques and Data

(Criteria in this section apply to all succeeding sections.)

Criteria	JORC Code Explanation	Commentary
Sampling techniques	<p>Nature and quality of sampling (e.g., cut channels, random chips, or specific specialised industry standard measurement tools appropriate to the minerals under investigation, such as down hole gamma sondes, or handheld XRF instruments, etc.). These examples should not be taken as limiting the broad meaning of sampling.</p> <p>Include reference to measures taken to ensure sample representivity and the appropriate calibration of any measurement tools or systems used.</p> <p>Aspects of the determination of mineralisation that are Material to the Public Report.</p>	<ul style="list-style-type: none"> No sample results are reported in this announcement. The UAV Magnetic survey was done by Pegasus Airborne Systems, using a PAS_HE UAV at a 10Hz sample rate. The data acquisition was flown at 20m height with 50m spaced lines and 500m spaced tie-lines Atlas Geophysics completed the gravity survey using a Scintrex CG5 or CG6 gravity meter, with 200m spaced gravity stations. All geophysical data was inverted by Terra Resources to produce a 3D image of the interpreted data. Historical sediment geochemistry is presented in presented in this announcement. The location and copper results are presented in Appendix 2. The samples were collected by previous explorers. Details on the historical samples collected by previous explorers is available on the Queensland geological data portal or GeoResGlobe.
Drilling techniques	<p>Drill type (e.g., core, reverse circulation, open-hole hammer, rotary air blast, auger, Bangka, sonic, etc.) And details (e.g., core diameter, triple or standard tube, depth of diamond tails, face-sampling bit or other type, whether core is oriented and if so, by what method, etc.).</p>	<ul style="list-style-type: none"> No drilling is reported in this announcement.
Drill sample recovery	<p>Method of recording and assessing core and chip sample recoveries and results assessed.</p> <p>Measures taken to maximise sample recovery and ensure representative nature of the samples.</p> <p>Whether a relationship exists between sample recovery and grade and whether sample bias may have occurred due to preferential loss/gain of fine/coarse material.</p>	<ul style="list-style-type: none"> No drilling is reported in this announcement.
Logging	<p>Whether core and chip samples have been geologically and geotechnically logged to a level of detail to support appropriate Mineral Resource estimation, mining studies and metallurgical studies.</p> <p>Whether logging is qualitative or quantitative in nature. Core (or costean, channel, etc.) Photography.</p> <p>The total length and percentage of the relevant intersections logged.</p>	<ul style="list-style-type: none"> No drilling is reported in this announcement.
Sub-sampling techniques	<p>If core, whether cut or sawn and whether quarter, half or all core taken.</p> <p>If non-core, whether riffled, tube sampled, rotary split, etc. And whether sampled wet or dry.</p>	<ul style="list-style-type: none"> No drilling is reported in this announcement.

Criteria	JORC Code Explanation	Commentary
and sample preparation	<p>For all sample types, the nature, quality and appropriateness of the sample preparation technique.</p> <p>Quality control procedures adopted for all sub-sampling stages to maximise representivity of samples.</p> <p>Measures taken to ensure that the sampling is representative of the in-situ material collected, including for instance results for field duplicate/second-half sampling.</p> <p>Whether sample sizes are appropriate to the grain size of the material being sampled.</p>	
Quality of assay data and laboratory tests	<p>The nature, quality and appropriateness of the assaying and laboratory procedures used and whether the technique is considered partial or total.</p> <p>For geophysical tools, spectrometers, handheld XRF instruments, etc., the parameters used in determining the analysis including instrument make and model, reading times, calibrations factors applied and their derivation, etc.</p> <p>Nature of quality control procedures adopted (e.g., standards, blanks, duplicates, external laboratory checks) and whether acceptable levels of accuracy (i.e., lack of bias) and precision have been established.</p>	<ul style="list-style-type: none"> • No Samples collected by AM5 are reported in this announcement. • The UAV Magnetic survey was done by Pegasus Airborne Systems, using a PAS_HE UAV at a 10Hz sample rate. The data acquisition was flown at 20m height with 50m spaced lines and 500m spaced tie-lines • Atlas Geophysics completed the gravity survey using a Scintrex CG5 or CG6 gravity meter, with 200m spaced gravity stations. • Data QAQC and analysis was completed by terra Resources. • The historical sediment geochemistry presented in this announcement was collected from open-file historical technical reports available from the QLD geological survey. Technical representatives of the historical explorers verify historical data at the time of submission.
Verification of sampling and assaying	<p>The verification of significant intersections by either independent or alternative company personnel.</p> <p>The use of twinned holes.</p> <p>Documentation of primary data, data entry procedures, data verification, data storage (physical and electronic) protocols.</p> <p>Discuss any adjustment to assay data.</p>	<ul style="list-style-type: none"> • Verification of the historical soil geochemistry results was done by way of visualising the data and verifying its location within the AM5 tenement boundaries. AM5 did not verify assay data QAQC since technical experts verify it at the time of submission to the QLD geological survey. • No independent analysis of the historical results have been done at this stage of the project work. • No adjustments have been applied to the results.
Location of data points	<p>Accuracy and quality of surveys used to locate drill holes (collar and down-hole surveys), trenches, mine workings and other locations used in Mineral Resource estimation. Specification of the grid system used.</p> <p>Quality and adequacy of topographic control.</p>	<ul style="list-style-type: none"> • No drilling is reported in this announcement. • Locations of the geophysical surveys are indicated on each diagram in the body of the announcement. • Location of soil sample data is available in Appendix 2.

Criteria	JORC Code Explanation	Commentary
Data spacing and distribution	Data spacing for reporting of Exploration Results. Whether the data spacing, and distribution is sufficient to establish the degree of geological and grade continuity appropriate for the Mineral Resource and Ore Reserve estimation procedure(s) and classifications applied. Whether sample compositing has been applied.	<ul style="list-style-type: none"> The spacing of the historical soil geochemical data is as collected by the historical explorers at the time. The spacing is considered appropriate to indicate areas of potentially elevated copper values in the soil. No Mineral Resource or Ore Reserve estimations are being reported.
Orientation of data in relation to geological structure	Whether the orientation of sampling achieves unbiased sampling of possible structures and the extent to which this is known, considering the deposit type. If the relationship between the drilling orientation and the orientation of key mineralised structures is considered to have introduced a sampling bias, this should be assessed and reported if material.	<ul style="list-style-type: none"> The geophysical surveys were conducted along and across strikes of the geology in the area, as per the recommendations of the geophysical consultancy that designed it. (Terra Resources) The soil geochemical data points represent the geological structures of the area.
Sample security	The measures taken to ensure sample security.	<ul style="list-style-type: none"> No Samples collected by AM5 were reported in this announcement.
Audits or reviews	The results of any audits or reviews of sampling techniques and data.	<ul style="list-style-type: none"> No audits have been conducted on the data.

Section 2 Reporting of Exploration Results

(Criteria listed in the preceding section also apply to this section.)

Criteria	JORC Code Explanation	Commentary
Mineral tenement and land tenure status	Type, reference name/number, location and ownership including agreements or material issues with third parties such as joint ventures, partnerships, overriding royalties, native title interests, historical sites, wilderness or national park and environmental settings. The security of the tenure held at the time of reporting along with any known impediments to obtaining a licence to operate in the area.	<ul style="list-style-type: none"> The review discussed in this announcement pertains to EPM26987 and EPM27570, held by Capella Metals Ltd (pending transfer from Buchus Resources Ltd)[Capella Metals Ltd is a subsidiary of Antares Metals Limited], which are located less than 100km north of Mount Isa in QLD. There are no material encumbrances such as royalties or other agreements.
Exploration done by other parties	Acknowledgment and appraisal of exploration by other parties.	A detailed review of specific historical exploration activities has not been completed. For this specific area.
Geology	Deposit type, geological setting and style of mineralisation.	<ul style="list-style-type: none"> The giant Mount Isa copper deposits are considered to be a variant of the globally significant group of sediment-hosted copper deposits. Besides large tonnages of copper, this group is also an important source of Co and Ag. Mount Isa Cu-Co breccia-hosted massive sulphide bodies are hosted by the Urquhart Shale of the Mount Isa Group. The Mount Isa Group and equivalent rock types, particularly dolomitic units, were reactive to Cu-bearing fluids and are highly prospective host rocks. Reduction of oxidised ore fluids is thought to be the key depositional mechanism and therefore, many

Criteria	JORC Code Explanation	Commentary
		other rock types in the Mount Isa region are potentially host rocks as well including Fe ²⁺ rocks such as metabasalt and interflow sedimentary units (Wilde et al., 2006).
Drill hole Information	<p>A summary of all information material to the understanding of the exploration results including a tabulation of the following information for all Material drill holes:</p> <p>easting and northing of the drill hole collar elevation or RL (Reduced Level – elevation above sea level in metres) of the drill hole collar dip and azimuth of the hole down hole length and interception depth hole length.</p> <p>If the exclusion of this information is justified on the basis that the information is not Material and this exclusion does not detract from the understanding of the report, the Competent Person should clearly explain why this is the case.</p>	<ul style="list-style-type: none"> No Drill information is presented in this announcement.
Data aggregation methods	<p>In reporting Exploration Results, weighting averaging techniques, maximum and/or minimum grade truncations (e.g., cutting of high grades) and cut-off grades are usually Material and should be stated.</p> <p>Where aggregate intercepts incorporate short lengths of high-grade results and longer lengths of low-grade results, the procedure used for such aggregation should be stated and some typical examples of such aggregations should be shown in detail.</p> <p>The assumptions used for any reporting of metal equivalent values should be clearly stated.</p>	<ul style="list-style-type: none"> No grade aggregation, weighting, or cut-off methods were used for this announcement.
Relationship between mineralisation widths and intercept lengths	<p>These relationships are particularly important in the reporting of Exploration Results.</p> <p>If the geometry of the mineralisation with respect to the drill hole angle is known, its nature should be reported.</p> <p>If it is not known and only the down hole lengths are reported, there should be a clear statement to this effect (e.g., ‘down hole length, true width not known’).</p>	<ul style="list-style-type: none"> The mineralised units are near vertical, but no intercepts are reported in this announcement.
Diagrams	<p>Appropriate maps and sections (with scales) and tabulations of intercepts should be included for any significant discovery being reported These should include, but not be limited to a plan view of drill hole collar locations and appropriate sectional views.</p>	<ul style="list-style-type: none"> Diagrams relating to the announcement are located in the announcement.
Balanced reporting	<p>Where comprehensive reporting of all Exploration Results is not practicable, representative reporting of both low and high grades and/or widths should be practiced to avoid misleading reporting of Exploration Results.</p>	<ul style="list-style-type: none"> No results of samples collected by AM5 have been reported in this announcement. Historical soil geochemical data is presented in this announcement. All historical soil geochemical data known to AM5 has been presented in the announcement.

For personal use only

Criteria	JORC Code Explanation	Commentary
Other substantive exploration data	Other exploration data, if meaningful and material, should be reported including (but not limited to): geological observations; geophysical survey results; geochemical survey results; bulk samples – size and method of treatment; metallurgical test results; bulk density, groundwater, geotechnical and rock characteristics; potential deleterious or contaminating substances.	• There is no other substantive exploration data to report.
Further work	The nature and scale of planned further work (e.g., tests for lateral extensions or depth extensions or large-scale step-out drilling). Diagrams clearly highlighting the areas of possible extensions, including the main geological interpretations and future drilling areas, provided this information is not commercially sensitive.	• Plans for further work are outlined in the body of the announcement.

Appendix 2: Historical Soil Sampling Results

Sample_ID	Latitude	Longitude	Cu (ppm)
1144877396	-20.3317	139.5934	85
1144881900	-20.3596	139.5983	70
1144881899	-20.3591	139.5985	80
1144881898	-20.3585	139.5963	145
1144881897	-20.3585	139.5969	135
1144881896	-20.3588	139.5974	145
1144881895	-20.3588	139.5982	110
1144881894	-20.3583	139.5988	85
1144881893	-20.3578	139.5992	70
1144881892	-20.3572	139.5952	135
1144881891	-20.3570	139.5951	105
1144884077	-20.3533	139.6060	120
1144884078	-20.3524	139.6065	80
1144884079	-20.3518	139.6071	85
1144884080	-20.3502	139.6082	95
1144884081	-20.3494	139.6084	45
1144884082	-20.3485	139.6086	45
1144884083	-20.3478	139.6096	45
1144884084	-20.3470	139.6105	40
1144884085	-20.3465	139.6110	50
1144884086	-20.3459	139.6117	60
1144884087	-20.3453	139.6121	60
1144884088	-20.3444	139.6128	45
1144884089	-20.3434	139.6133	40
1144884090	-20.3428	139.6133	35
1144884091	-20.3488	139.5914	55
1144884132	-20.3547	139.6032	125
1144884133	-20.3548	139.6022	100
1144884134	-20.3538	139.6016	100
1144884135	-20.3551	139.6018	85
1144884136	-20.3544	139.6006	105
1144884137	-20.3527	139.5995	110
1144884138	-20.3526	139.5998	200
1144884139	-20.3541	139.6049	80
1144884140	-20.3516	139.6068	80
1144884141	-20.3515	139.6053	70
1144884142	-20.3511	139.6042	80
1144884143	-20.3518	139.6054	135
1144884144	-20.3514	139.6055	80
1144884145	-20.3499	139.6031	70
1144884146	-20.3494	139.6013	85
1144884147	-20.3498	139.6014	70

Sample_ID	Latitude	Longitude	Cu (ppm)
1145274521	-20.3833	139.6020	60
1145274627	-20.3378	139.5602	55
1145274626	-20.3392	139.5623	45
1145274625	-20.3414	139.5632	85
1145274624	-20.3403	139.5664	65
1145274623	-20.3406	139.5734	65
1145274622	-20.3418	139.5737	75
1145274621	-20.3427	139.5625	70
1145274614	-20.3479	139.5607	80
1145274612	-20.3556	139.5643	80
1145274611	-20.3566	139.5643	70
1145274599	-20.3644	139.5629	105
1145274586	-20.3804	139.5636	95
1145274585	-20.3812	139.5644	100
1145274584	-20.3831	139.5635	55
1145274579	-20.3801	139.5723	80
1145274578	-20.3792	139.5800	35
1145274577	-20.3789	139.5810	75
1145274576	-20.3747	139.5843	110
1145274575	-20.3747	139.5809	90
1145274574	-20.3795	139.5731	55
1145274573	-20.3783	139.5717	75
1145274572	-20.3768	139.5714	90
1145274571	-20.3744	139.5725	75
1145274570	-20.3740	139.5705	90
1145274569	-20.3738	139.5736	75
1145274568	-20.3719	139.5740	80
1145274567	-20.3710	139.5723	80
1145274566	-20.3714	139.5756	70
1145274565	-20.3702	139.5743	105
1145274564	-20.3697	139.5725	120
1145274563	-20.3697	139.5752	60
1145274562	-20.3679	139.5758	65
1145274561	-20.3625	139.5725	75
1145274560	-20.3627	139.5707	95
1145274559	-20.3595	139.5690	95
1145274558	-20.3618	139.5855	100
1145274557	-20.3625	139.5843	10
1145274556	-20.3593	139.5822	75
1145274555	-20.3568	139.5849	60
1145274554	-20.3566	139.5826	60
1145274553	-20.3543	139.5801	75

Sample_ID	Latitude	Longitude	Cu (ppm)
1144877472	-20.3554	139.5931	190
1144877473	-20.3557	139.5929	165
1144877474	-20.3557	139.5935	150
1144877475	-20.3553	139.5940	180
1144877476	-20.3550	139.5946	170
1144877477	-20.3551	139.5953	140
1144877478	-20.3545	139.5954	150
1144877479	-20.3541	139.5970	140
1144877480	-20.3544	139.5968	140
1144877481	-20.3540	139.5975	230
1144877482	-20.3543	139.5979	160
1144877483	-20.3549	139.5979	180
1144877484	-20.3553	139.5987	150
1144877485	-20.3561	139.5990	70
1144877486	-20.3559	139.5994	100
1144877487	-20.3565	139.6000	70
1144877488	-20.3571	139.5994	110
1144877489	-20.3571	139.5984	110
1144877490	-20.3574	139.5981	100
1144877491	-20.3576	139.5974	125
1144877492	-20.3574	139.5966	100
1144877493	-20.3572	139.5960	90
1144877421	-20.3580	139.5903	60
1144877422	-20.3585	139.5904	90
1144877423	-20.3609	139.5939	120
1144877424	-20.3613	139.5937	125
1144877425	-20.3613	139.5933	110
1144877426	-20.3616	139.5932	120
1144877427	-20.3617	139.5926	125
1144877428	-20.3622	139.5927	135
1144877429	-20.3535	139.5962	105
1144877430	-20.3533	139.5957	95
1144877431	-20.3531	139.5953	45
1144877432	-20.3529	139.5954	110
1144877433	-20.3521	139.5952	120
1144877434	-20.3524	139.5949	170
1144877435	-20.3524	139.5941	210
1144877436	-20.3523	139.5929	260
1144877437	-20.3528	139.5928	220
1144877438	-20.3526	139.5926	190
1144877439	-20.3516	139.5948	110
1144877440	-20.3517	139.5944	170

Sample_ID	Latitude	Longitude	Cu (ppm)
1144884148	-20.3492	139.6020	50
1144884149	-20.3497	139.6036	80
1144884150	-20.3508	139.6031	150
1144884151	-20.3512	139.6037	135
1144881975	-20.3346	139.5853	45
1144881976	-20.3353	139.5852	90
1144881977	-20.3359	139.5854	90
1144881978	-20.3356	139.5863	130
1144881979	-20.3369	139.5862	70
1144881980	-20.3371	139.5869	110
1144877361	-20.3472	139.6083	60
1144877362	-20.3471	139.6074	82
1144877363	-20.3475	139.6063	65
1144877364	-20.3476	139.6071	100
1144877365	-20.3469	139.6054	20
1144877366	-20.3472	139.6053	65
1144877367	-20.3473	139.6038	105
1144877368	-20.3463	139.6027	105
1144877369	-20.3437	139.5990	95
1144877370	-20.3438	139.5999	100
1144877411	-20.3600	139.5941	60
1144877412	-20.3598	139.5935	60
1144877413	-20.3594	139.5926	85
1144877414	-20.3596	139.5921	35
1144877415	-20.3600	139.5917	95
1144877416	-20.3588	139.5924	70
1144877417	-20.3584	139.5918	70
1144877418	-20.3580	139.5921	90
1144877419	-20.3584	139.5914	600
1144877420	-20.3583	139.5910	75
1144882010	-20.3345	139.5789	140
1144882009	-20.3343	139.5785	160
1144882008	-20.3331	139.5779	140
1144882007	-20.3332	139.5770	120
1144882006	-20.3346	139.5771	40
1144882005	-20.3346	139.5763	95
1144882004	-20.3378	139.5789	105
1144882003	-20.3372	139.5782	180
1144882002	-20.3379	139.5773	110
1144882001	-20.3370	139.5765	90
1144867036	-20.3322	139.5821	140
1144867037	-20.3327	139.5849	130
1144882086	-20.3412	139.6010	200
1144882087	-20.3408	139.6017	110
1144882088	-20.3424	139.5983	95
1144882089	-20.3423	139.6000	110
1144882090	-20.3422	139.6008	110
1144882071	-20.3417	139.6054	100
1144882072	-20.3408	139.6048	40
1144882073	-20.3409	139.6045	95
1144882074	-20.3400	139.6034	125
1144882075	-20.3403	139.6031	120
1144882076	-20.3401	139.6018	140
1144882077	-20.3393	139.6001	235
1144882078	-20.3395	139.5991	60
1144882079	-20.3393	139.5989	150
1144882080	-20.3388	139.5982	240
1144882081	-20.3392	139.5980	60
1144882082	-20.3390	139.5977	150
1144882083	-20.3404	139.5973	105
1144882084	-20.3406	139.5987	105
1144882085	-20.3409	139.6004	125
1144882091	-20.3432	139.6018	85
1144882092	-20.3435	139.6015	120
1144882093	-20.3434	139.6005	125
1144882094	-20.3436	139.6031	80
1144882095	-20.3435	139.6040	90

Sample_ID	Latitude	Longitude	Cu (ppm)
1145274552	-20.3554	139.5755	55
1145274551	-20.3530	139.5741	60
1145274550	-20.3510	139.5715	90
1145274549	-20.3487	139.5695	135
1145274548	-20.3493	139.5720	105
1145274547	-20.3477	139.5719	100
1145274546	-20.3488	139.5753	120
1145274545	-20.3483	139.5786	150
1145274544	-20.3467	139.5785	90
1145274543	-20.3471	139.5791	60
1145274542	-20.3460	139.5823	70
1145274541	-20.3465	139.5827	110
1145274540	-20.3473	139.5825	55
1145274539	-20.3607	139.5942	170
1145274538	-20.3617	139.5913	230
1145274537	-20.3629	139.5926	180
1145274536	-20.3643	139.5953	100
1145274535	-20.3653	139.5955	110
1145274534	-20.3683	139.5933	150
1145274533	-20.3680	139.5924	95
1145274532	-20.3691	139.5905	115
1145274531	-20.3705	139.5899	120
1145274530	-20.3726	139.5921	75
1145274529	-20.3737	139.5955	110
1145274528	-20.3745	139.5959	110
1145274527	-20.3793	139.5870	90
1145274526	-20.3808	139.5876	120
1145274525	-20.3814	139.5871	100
1144881901	-20.3601	139.5983	100
1144881902	-20.3601	139.5976	80
1144881903	-20.3603	139.5972	65
1144881904	-20.3600	139.5967	60
1144881905	-20.3596	139.5963	145
1144881906	-20.3609	139.5966	60
1144881907	-20.3605	139.5962	80
1144881908	-20.3593	139.5951	105
1144881909	-20.3587	139.5948	125
1144881910	-20.3599	139.5951	70
1144881921	-20.3508	139.6031	140
1144881922	-20.3496	139.6024	85
1144881923	-20.3492	139.6020	35
1144881924	-20.3498	139.6014	60
1144881925	-20.3489	139.6005	65
1144881926	-20.3487	139.5997	85
1144881927	-20.3480	139.6001	70
1144881928	-20.3454	139.5972	70
1144881929	-20.3466	139.5982	30
1144881930	-20.3473	139.5984	55
1144881931	-20.3476	139.5972	120
1144881932	-20.3468	139.5972	80
1144881933	-20.3470	139.5967	65
1144881934	-20.3466	139.5947	90
1144881935	-20.3462	139.5940	50
1144881936	-20.3457	139.5941	100
1144881937	-20.3448	139.5962	85
1144881938	-20.3448	139.5958	80
1144881939	-20.3435	139.5944	200
1144881940	-20.3432	139.5945	45
1144884111	-20.3635	139.6208	20
1144884110	-20.3636	139.6204	25
1144884108	-20.3372	139.5950	110
1144884107	-20.3368	139.5954	120
1144884106	-20.3364	139.5950	100
1144884105	-20.3352	139.5953	110
1144884104	-20.3347	139.5939	90
1144884103	-20.3341	139.5952	85
1144884102	-20.3337	139.5957	100

Sample_ID	Latitude	Longitude	Cu (ppm)
1144877441	-20.3514	139.5939	150
1144877442	-20.3511	139.5939	210
1144877443	-20.3506	139.5935	180
1144877444	-20.3501	139.5930	85
1144877445	-20.3504	139.5929	220
1144877446	-20.3506	139.5924	170
1144877447	-20.3509	139.5920	170
1144877448	-20.3516	139.5916	250
1144877449	-20.3512	139.5913	180
1144877450	-20.3515	139.5912	190
1144877451	-20.3516	139.5907	235
1144877452	-20.3519	139.5906	140
1144877453	-20.3509	139.5952	220
1144877454	-20.3513	139.5954	230
1144877455	-20.3511	139.5945	110
1144877456	-20.3507	139.5943	120
1144877457	-20.3500	139.5944	235
1144877458	-20.3495	139.5947	210
1144877459	-20.3499	139.5939	70
1144877460	-20.3492	139.5938	100
1145274787	-20.3338	139.5769	65
1145274788	-20.3335	139.5781	190
1145274789	-20.3376	139.5834	240
1145274790	-20.3349	139.5830	310
1145274791	-20.3347	139.5847	230
1145274792	-20.3380	139.5914	70
1145274793	-20.3373	139.5922	165
1145274854	-20.3348	139.6147	60
1145274855	-20.3330	139.6176	90
1145274856	-20.3328	139.6199	65
1145273895	-20.3479	139.6193	45
1145273896	-20.3487	139.6193	110
1145273897	-20.3502	139.6204	50
1145273898	-20.3506	139.6209	25
1145273901	-20.3607	139.6159	120
1145273902	-20.3632	139.6172	180
1145273903	-20.3642	139.6163	65
1145273904	-20.3668	139.6188	65
1145273909	-20.3750	139.6213	75
1145273910	-20.3741	139.6132	40
1145273911	-20.3747	139.6125	110
1145273912	-20.3713	139.6103	65
1145273905	-20.3679	139.6186	60
1145273906	-20.3703	139.6180	60
1145273907	-20.3708	139.6215	45
1145273913	-20.3702	139.6125	50
1145273914	-20.3650	139.6122	60
1145273915	-20.3628	139.6128	80
1145273916	-20.3568	139.6163	95
1145273917	-20.3544	139.6131	80
1145273918	-20.3540	139.6111	95
1145273919	-20.3513	139.6094	80
1145273920	-20.3475	139.6111	230
1145273921	-20.3449	139.6119	129
1145273922	-20.3457	139.6129	50
1145273923	-20.3435	139.6122	190
1145273924	-20.3409	139.6165	25
1145273925	-20.3405	139.6130	110
1145273926	-20.3365	139.6062	110
1145273927	-20.3371	139.6058	125
1145273928	-20.3406	139.6031	220
1144881911	-20.3603	139.6135	180
1144881912	-20.3609	139.6150	140
1144881913	-20.3606	139.6152	170
1144881914	-20.3605	139.6163	240
1144881915	-20.3612	139.6184	270
1144881916	-20.3616	139.6184	240

Sample_ID	Latitude	Longitude	Cu (ppm)
1144882096	-20.3432	139.6040	125
1144882097	-20.3434	139.6055	90
1144882098	-20.3445	139.6051	95
1144882099	-20.3431	139.6065	70
1144882100	-20.3432	139.6070	125
1144882101	-20.3427	139.6075	140
1144882102	-20.3430	139.6081	95
1144882103	-20.3420	139.6089	120
1144882104	-20.3411	139.6080	160
1144882105	-20.3425	139.6105	95
1144882106	-20.3632	139.5913	120
1144882107	-20.3628	139.5919	120
1144882108	-20.3634	139.5901	100
1144882109	-20.3642	139.5892	95
1144882110	-20.3647	139.5915	120
1144882050	-20.3317	139.5997	100
1144882051	-20.3320	139.6005	80
1144882052	-20.3324	139.6018	135
1144882053	-20.3321	139.6000	55
1144882054	-20.3327	139.5999	55
1144882055	-20.3331	139.6001	60
1144882056	-20.3364	139.6019	120
1144882057	-20.3366	139.6016	100
1144882058	-20.3366	139.6006	105
1144882059	-20.3363	139.6004	135
1144882060	-20.3365	139.5996	110
1144882061	-20.3363	139.5993	160
1144882062	-20.3361	139.5976	200
1144882063	-20.3364	139.5975	190
1144882064	-20.3351	139.5998	80
1144882065	-20.3347	139.5998	35
1144882066	-20.3355	139.6002	35
1144882067	-20.3358	139.6010	15
1144882068	-20.3356	139.6014	110
1144882069	-20.3426	139.6065	125
1144882070	-20.3415	139.6058	90
1145274488	-20.3424	139.6059	140
1145274489	-20.3437	139.6036	190
1145274490	-20.3439	139.6055	300
1145274491	-20.3518	139.6055	210
1145274492	-20.3489	139.5993	330
1145274493	-20.3456	139.5963	210
1145274494	-20.3469	139.5958	290
1145274495	-20.3514	139.5940	250
1145274496	-20.3528	139.5955	180
1145274497	-20.3544	139.5936	260
1145274498	-20.3542	139.5970	1600
1145274499	-20.3551	139.6034	140
1145274500	-20.3561	139.6041	215
1145274501	-20.3559	139.5988	215
1145274502	-20.3570	139.5986	300
1145274503	-20.3600	139.5937	300
1145274504	-20.3608	139.6026	45
1145274505	-20.3618	139.6040	45
1145274506	-20.3664	139.6049	95
1145274507	-20.3696	139.6024	70
1145274508	-20.3709	139.6041	95
1145274509	-20.3716	139.6039	95
1145274510	-20.3730	139.6016	110
1145274511	-20.3739	139.6023	110
1145274512	-20.3762	139.6066	90
1145274513	-20.3771	139.6048	95
1145274514	-20.3802	139.6075	50
1145274515	-20.3809	139.6087	60
1145274516	-20.3810	139.6065	60
1145274517	-20.3816	139.6103	95
1145274518	-20.3814	139.6036	35

Sample_ID	Latitude	Longitude	Cu (ppm)
1144884101	-20.3447	139.5861	15
1144884100	-20.3449	139.5865	40
1144884099	-20.3444	139.5870	25
1144884098	-20.3449	139.5875	30
1144884097	-20.3452	139.5885	30
1144884096	-20.3453	139.5894	25
1144884095	-20.3456	139.5906	20
1144884094	-20.3465	139.5902	35
1144884093	-20.3472	139.5899	45
1144884092	-20.3479	139.5914	40
1144884122	-20.3627	139.6150	40
1144884128	-20.3600	139.6128	90
1144884123	-20.3625	139.6139	50
1144884124	-20.3626	139.6126	50
1144884125	-20.3634	139.6129	50
1144884126	-20.3618	139.6122	50
1144884127	-20.3606	139.6125	45
1144884129	-20.3550	139.6042	70
1144884130	-20.3545	139.6038	80
1144884131	-20.3550	139.6030	70
1144881951	-20.3345	139.5906	65
1144881952	-20.3346	139.5896	65
1144881953	-20.3343	139.5896	70
1144881954	-20.3336	139.5880	70
1144881955	-20.3335	139.5870	65
1144881956	-20.3326	139.5864	100
1144881957	-20.3326	139.5850	95
1144881958	-20.3339	139.5841	105
1144881959	-20.3328	139.5822	100
1144881960	-20.3316	139.5822	90
1144877371	-20.3434	139.6121	50
1144877372	-20.3448	139.6119	40
1144877373	-20.3447	139.6106	25
1144877374	-20.3451	139.6093	15
1144877375	-20.3448	139.5962	85
1144877376	-20.3448	139.5958	80
1144877377	-20.3435	139.5944	200
1144877379	-20.3432	139.5945	45
1144882111	-20.3643	139.5927	125
1144882112	-20.3630	139.5926	110
1144882113	-20.3390	139.5823	100
1144882114	-20.3395	139.5835	125
1144882115	-20.3399	139.5828	170
1144882116	-20.3405	139.5832	190
1144882117	-20.3409	139.5824	100
1144884162	-20.3502	139.5990	65
1144884163	-20.3508	139.5984	95
1144884164	-20.3507	139.5986	65
1144881991	-20.3327	139.5740	100
1144881992	-20.3336	139.5737	40
1144881993	-20.3336	139.5728	90
1144881994	-20.3341	139.5728	65
1144881995	-20.3353	139.5745	150
1144881996	-20.3353	139.5756	110
1144881997	-20.3357	139.5757	95
1144881998	-20.3366	139.5756	80
1144881999	-20.3368	139.5749	140
1144882000	-20.3374	139.5746	125
1144877461	-20.3541	139.5960	120
1144877462	-20.3542	139.5954	140
1144877463	-20.3542	139.5950	110
1144877464	-20.3543	139.5947	145
1144877465	-20.3543	139.5941	170
1144877466	-20.3543	139.5935	180
1144877467	-20.3542	139.5928	180
1144877468	-20.3542	139.5923	170
1144877469	-20.3539	139.5919	200

Sample_ID	Latitude	Longitude	Cu (ppm)
1144881917	-20.3518	139.6054	80
1144881918	-20.3516	139.6068	80
1144881919	-20.3497	139.6036	70
1144881920	-20.3512	139.6037	130
1144881941	-20.3413	139.5935	200
1144881942	-20.3409	139.5938	55
1144881943	-20.3404	139.5924	200
1144881944	-20.3395	139.5921	170
1144881945	-20.3391	139.5924	35
1144881946	-20.3384	139.5915	100
1144881947	-20.3378	139.5913	80
1144881948	-20.3373	139.5918	60
1144881949	-20.3356	139.5909	50
1144881950	-20.3360	139.5901	110
1144884112	-20.3634	139.6194	35
1144884113	-20.3630	139.6188	25
1144884114	-20.3632	139.6176	20
1144884115	-20.3635	139.6172	15
1144884116	-20.3641	139.6184	30
1144884117	-20.3638	139.6187	30
1144884118	-20.3637	139.6160	25
1144884119	-20.3645	139.6165	40
1144884120	-20.3657	139.6170	55
1144884121	-20.3629	139.6160	40
1144877348	-20.3505	139.5985	125
1144877349	-20.3470	139.5985	100
1144877350	-20.3454	139.5977	100
1144877351	-20.3454	139.5972	55
1144877352	-20.3476	139.5972	120
1144877353	-20.3479	139.5960	140
1144877354	-20.3468	139.5972	140
1144877355	-20.3470	139.5967	90
1144877356	-20.3464	139.5946	55
1144877357	-20.3466	139.5947	105
1144877358	-20.3462	139.5940	50
1144877359	-20.3457	139.5941	95
1144877360	-20.3473	139.6097	55
1144881981	-20.3377	139.5866	90
1144881982	-20.3383	139.5867	50
1144881983	-20.3388	139.5877	90
1144881984	-20.3401	139.5882	40
1144881985	-20.3399	139.5888	35
1144881986	-20.3393	139.5895	110
1144881988	-20.3324	139.5769	85
1144881989	-20.3324	139.5755	85
1144881990	-20.3329	139.5751	40
1144884152	-20.3481	139.5998	95
1144884153	-20.3487	139.5997	95
1144884154	-20.3488	139.5988	95
1144884155	-20.3494	139.5980	95
1144884156	-20.3494	139.5975	90
1144884157	-20.3495	139.5968	190
1144884158	-20.3499	139.5966	90
1144884159	-20.3489	139.6005	65
1144884160	-20.3497	139.5994	95
1144884161	-20.3500	139.5994	165
1144882014	-20.3377	139.5835	160
1144882015	-20.3384	139.5834	120
1144882016	-20.3381	139.5840	70
1144882017	-20.3402	139.5856	160
1144877404	-20.3322	139.5957	65
1144877405	-20.3318	139.5965	40
1144877406	-20.3327	139.5955	45
1144877407	-20.3338	139.5961	40
1144877408	-20.3347	139.5967	66
1144877409	-20.3352	139.5966	65
1144877410	-20.3604	139.5944	105

For personal use only

Sample_ID	Latitude	Longitude	Cu (ppm)
1145274519	-20.3788	139.6023	80
1145274520	-20.3819	139.6001	30

Sample_ID	Latitude	Longitude	Cu (ppm)
1144877470	-20.3538	139.5912	165
1144877471	-20.3536	139.5906	190

Sample_ID	Latitude	Longitude	Cu (ppm)
1144882011	-20.3348	139.5825	120
1144882012	-20.3355	139.5826	130
1144882013	-20.3365	139.5821	95