

20 March 2025

Multiple Gold-Antimony Exploration Targets at Halls Peak Following Geophysical Survey Interpretation

Highlights

- **Identification of Untested Structural Corridors:** The geophysical survey has revealed previously unrecognized structural corridors with the potential to host significant gold-antimony mineralisation, unlocking new exploration opportunities.
- **Magnetic Data Confirms Deep-Seated Fault Systems:** Advanced filtering techniques have identified deep-rooted fault systems, which are critical for fluid flow and ore deposition, enhancing the geological model of the Gibsons Prospect area within the Halls Peak project.
- **Potential for Multiple Mineralisation Styles:** The reinterpretation suggests that the Gibsons Prospect in the Halls Peak Project may host both Hillgrove-style gold-antimony mineralisation in addition to the mineralisation associated with base metal systems, increasing the project's potential.
- **Refined Exploration Focus Based on New Geophysical Data:** The latest data allows for a more targeted exploration approach, prioritizing structural intersections and magnetic anomalies indicative of mineralisation.
- **Multi-prospect project:** These new key findings together with recent sampling and geophysical findings received across the Halls Peak project, provides numerous additional targets at the Mayview, Gibsons and the Amico Grid prospects
- **Significant Antimony Mineralisation from Drilling:** Previous drilling has confirmed substantial antimony mineralisation, 20,400 g/t Sb over 1.15m (DDHA6), 10,000 g/t Sb over 1.24m (CRR21DD_01), elevated antimony values in at least 11 drill holes, with multiple samples exceeding 500 g/t Sb.
- **High-Grade Silver Intercepts:** Further analysis of past drilling has also revealed exceptionally high-grade silver mineralisation at the Gibsons Project within Halls Peak, as detailed in the December 4, 2024, announcement: 3,780 g/t Ag (121.5 oz/t) over 1.15m (DDHA6), 1,900 g/t Ag over 1.38m (PMR027), 1,750 g/t Ag over 1.6m (PMR027), More than 130 drill core samples assayed over 100 g/t Ag, 10 samples exceeded 940 g/t Ag (30 oz/t).

Critical Resources Limited (**ASX: CRR**) is pleased to announce the results of a comprehensive geophysical review and airborne magnetic interpretation over the Halls Peak Project, covering exploration licences EL 4474, 7679, and 9293 in the New England area, NSW. The study, conducted by Eureka Consulting Pty Ltd, has identified significant structural features that are highly prospective for gold-antimony mineralisation, aligning with a Hillgrove-style system.

The reinterpretation of aeromagnetic data has highlighted structural complexities that provide ideal conditions for gold-antimony mineralisation. These systems are believed to have been superimposed onto the existing Permian sedimentary package, which hosts high-grade Zn-Pb-Cu-Ag-Au mineralisation, as evidenced by previously discovered massive sulphide lodes. This finding significantly expands the exploration potential at the Gibsons Prospect area within Halls Peak by introducing a secondary mineralisation style beyond the established base metal systems.



The airborne survey, originally acquired using a helicopter-borne VTEM and magnetic data acquisition systems by Geotech Limited, was initially designed to target massive base metal sulphide mineralisation. The new geophysical interpretation has unveiled fault structures that could act as key conduits for gold-antimony deposition, reinforcing the project's potential to host a structurally controlled mineral system comparable to Larvotto Resources Limited's (ASX: LRV) Hillgrove Antimony-Gold operations.

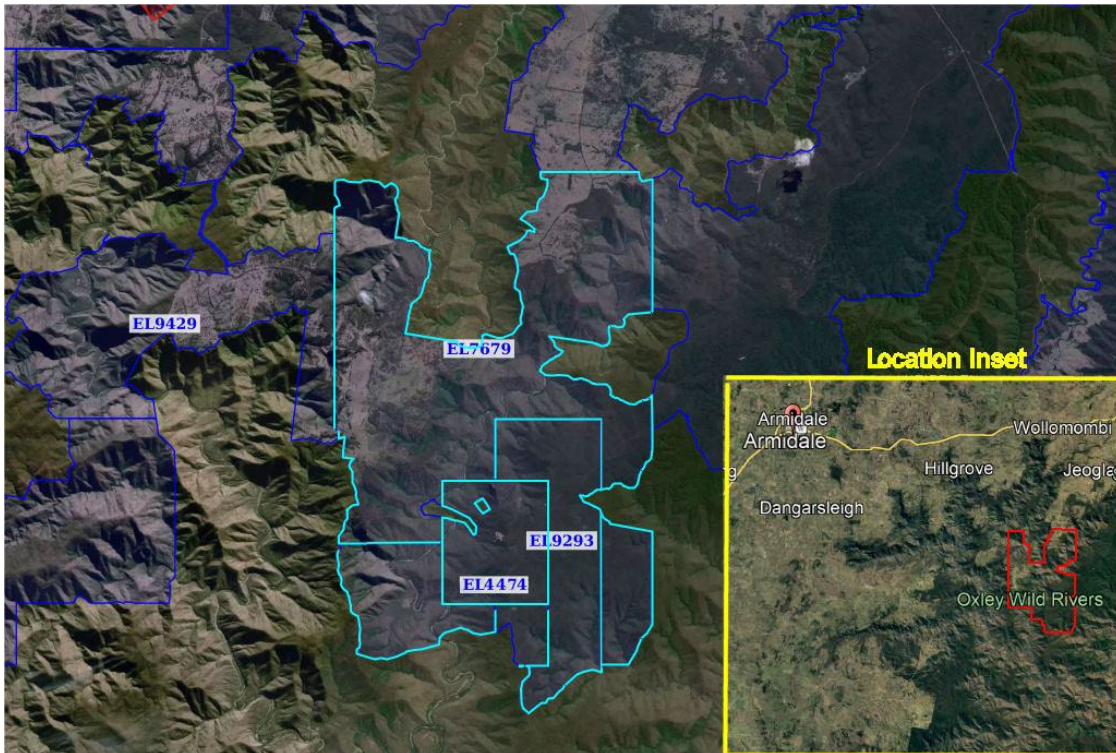


Figure 1: Tenements 4474, 7679 and 9293 with the area relative to nearby locations of Hillgrove and Armidale

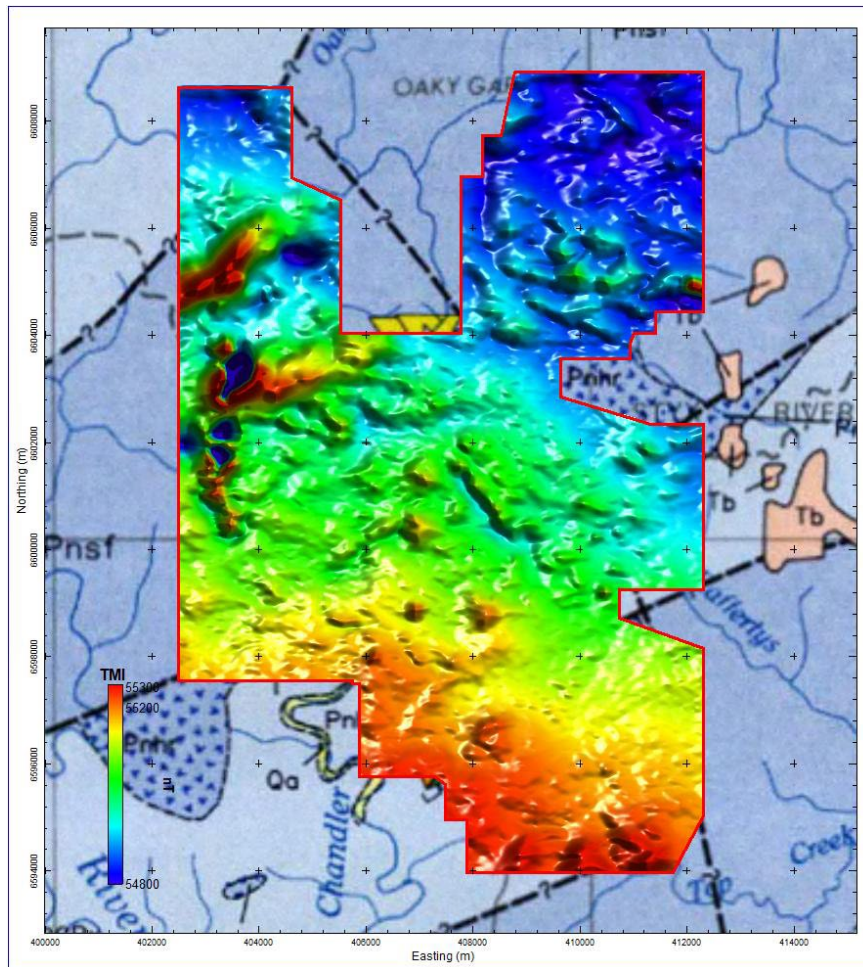


Figure 2: TMI image of VTEM aeromagnetic survey over Halls Peak.

Identification of Major Fault Structures and New Gold-Antimony Targets

The aeromagnetic survey has outlined a network of major fault structures interpreted as key conduits for hydrothermal activity responsible for Hillgrove-style gold-antimony mineralisation. These faults, trending NE-SW and NW-SE, align with historical mineralized trends and known gold-antimony occurrences, closely resembling the structural framework at the Hillgrove deposit.

The reinterpretation has refined the location and orientation of previously known faults while identifying secondary and splay faults. Cross-cutting relationships between major and minor faults suggest zones of increased deformation and fluid interaction, prime areas for gold-antimony vein systems. Advanced filtering techniques (First Vertical Derivative, Tilt Derivative, and Edge Detection) have also identified magnetic discontinuities indicative of deeply rooted structures, potentially associated with major lithological contacts or intrusive events influencing mineralisation.

Up to 36 high-priority exploration targets have emerged within faulted zones that likely served as mineralising conduits. Structural intersections, known to host gold-antimony mineralisation in similar settings, display intense magnetic variations, suggesting alteration zones. Additionally, underexplored fault blocks with magnetic anomalies indicative of hydrothermal activity have been identified for ground-truthing, geochemical sampling, and potential drill testing. Some faults extend beyond previously mapped limits, expanding the prospective ground at Halls Peak and warranting further structural mapping and surface sampling.



For personal use only

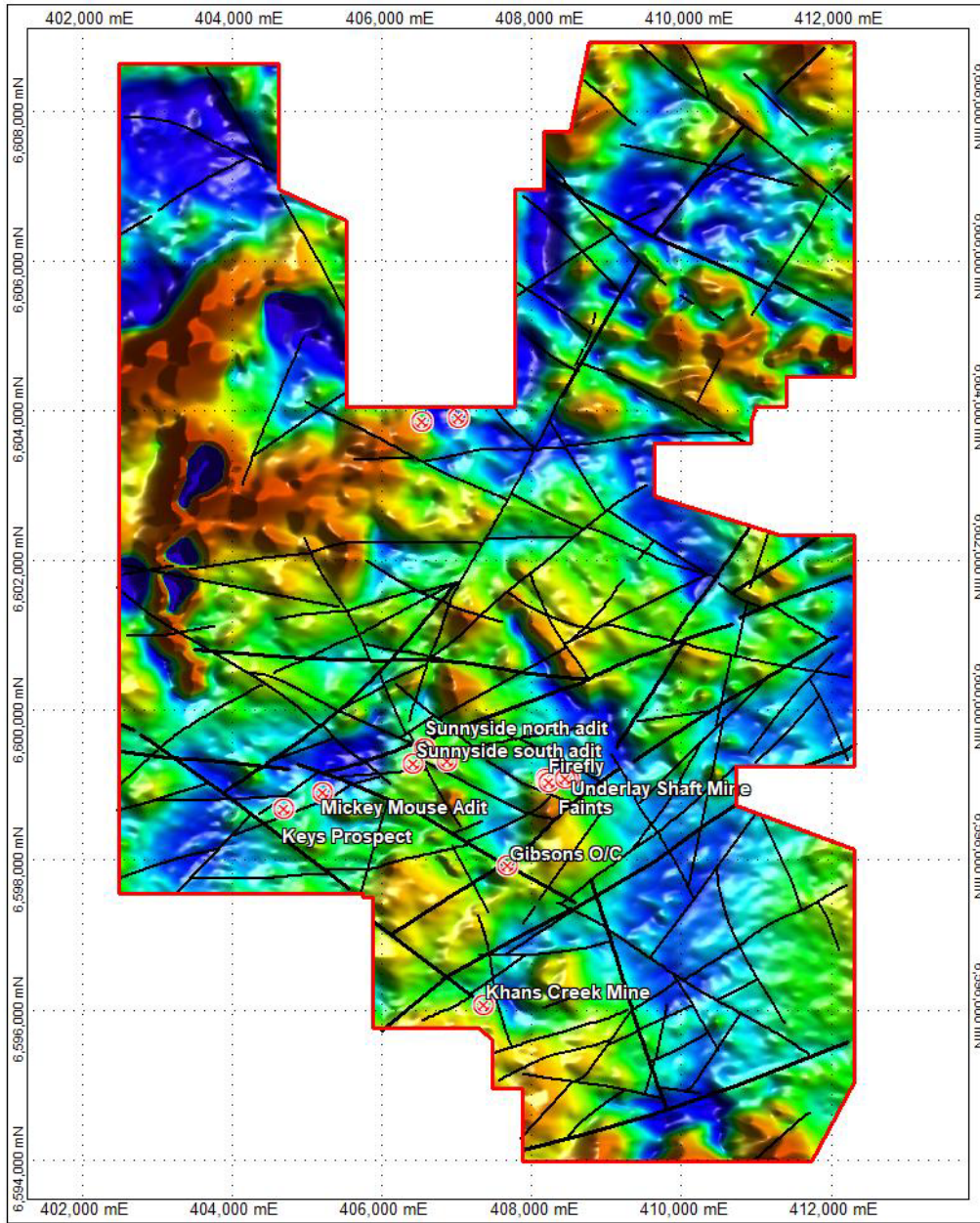


Figure 3: RTP Magnetics with known mineralisation overlaid as red symbols.



personal use only

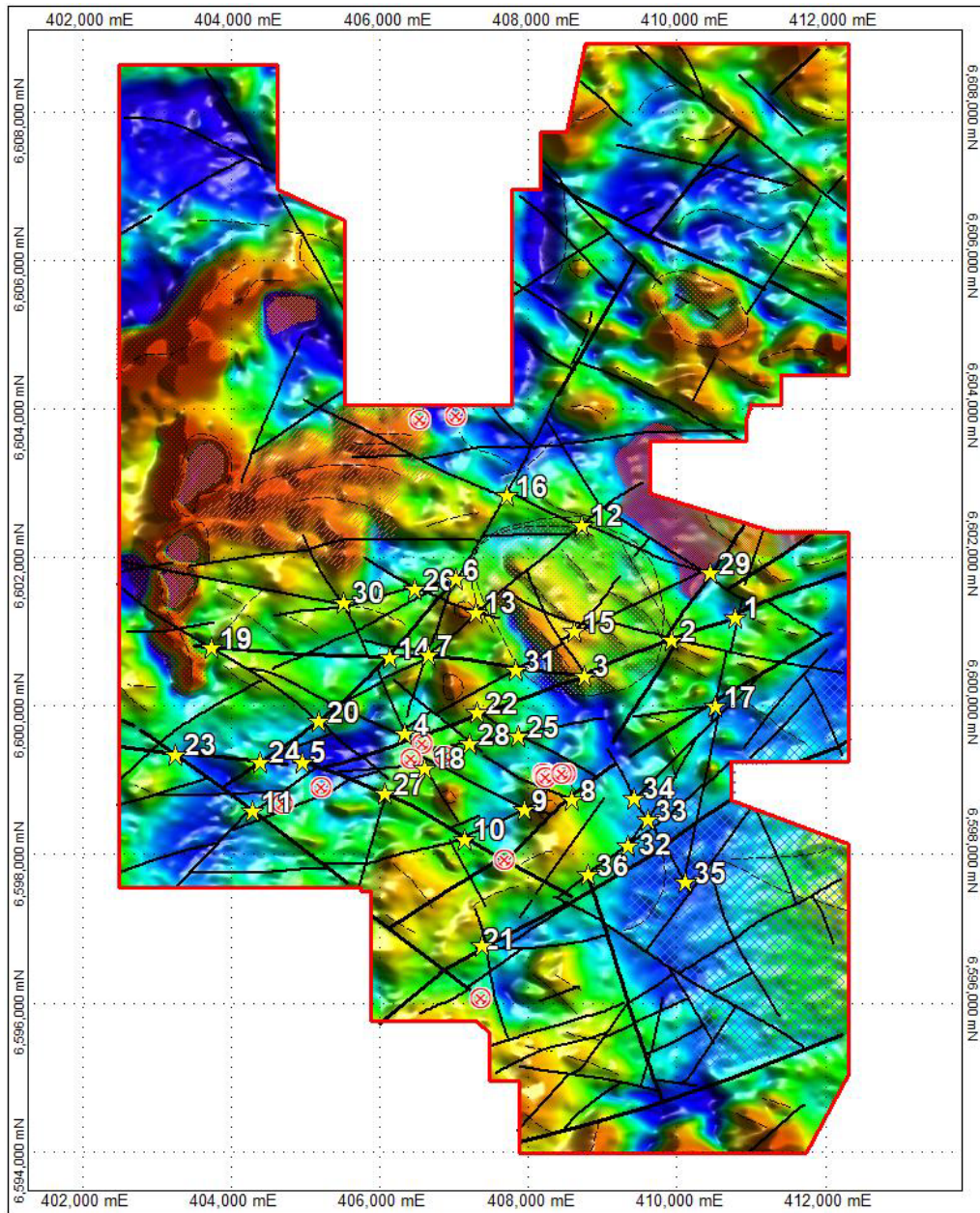


Figure 4: Location of 36 exploration targets over RTP magnetics.

Enhanced Geological Understanding of the Gold-Antimony System at Halls Peak

Recent geological and geophysical studies at Halls Peak have significantly advanced the understanding of its gold-antimony mineralisation. Reprocessed aeromagnetic data and structural interpretations suggest that the mineralisation is strongly controlled by deformation events, with key fault structures playing a crucial role in metal deposition. Additionally, the recognition of an alternative mineralisation style highlights the potential for late-stage Hillgrove-style gold-antimony systems, further expanding the exploration model for the area.

Improved Structural Interpretation

- Reprocessed aeromagnetic data has provided a clearer geological framework, enhancing the understanding of mineralisation at Halls Peak.
- The Hillgrove-style gold-antimony system is now recognized as being strongly structurally controlled, with mineralisation linked to key deformation events.
- The alignment of historically mapped gold-silver-antimony occurrences within interpreted fault zones further validates the aeromagnetic interpretation.



Recognition of Alternative Mineralisation Style

A key development in recent studies is the recognition of a different style of mineralisation, indicating the potential for late-stage Hillgrove-style gold-antimony systems. These systems are thought to have been superimposed onto the Permian sedimentary package that hosts high-grade Zn-Pb-Cu-Ag-Au mineralisation, as evidenced by massive sulfide lodes already discovered. The proposed system comprises large orogenic gold-antimony fault vein and quartz stockwork-breccia mineralisation, believed to have formed within deep-seated fault structures extending for hundreds of meters.

Interpreted Structures Coincident with Anomalous Au and Sb Discovered in the Amoco Grid

Geochemical data for gold rock chip samples have been overlaid on the interpreted structures. This has provided a number of focused targets to be examined and sampled on the ground where Amoco gold anomaly data plots on major structures. These intersections could potentially host gold clustering, along structures, and especially when structures intersect. The Amoco Grid hosts highly anomalous rock chip and soil samples, over a length of over 1,000 metres from east to west, with elevated gold mineralisation at 17.9g/t, 12.9 g/t and 10.4 g/t, antimony at 0.53% and silver at 80g/t (refer to ASX Release November 8 2024).

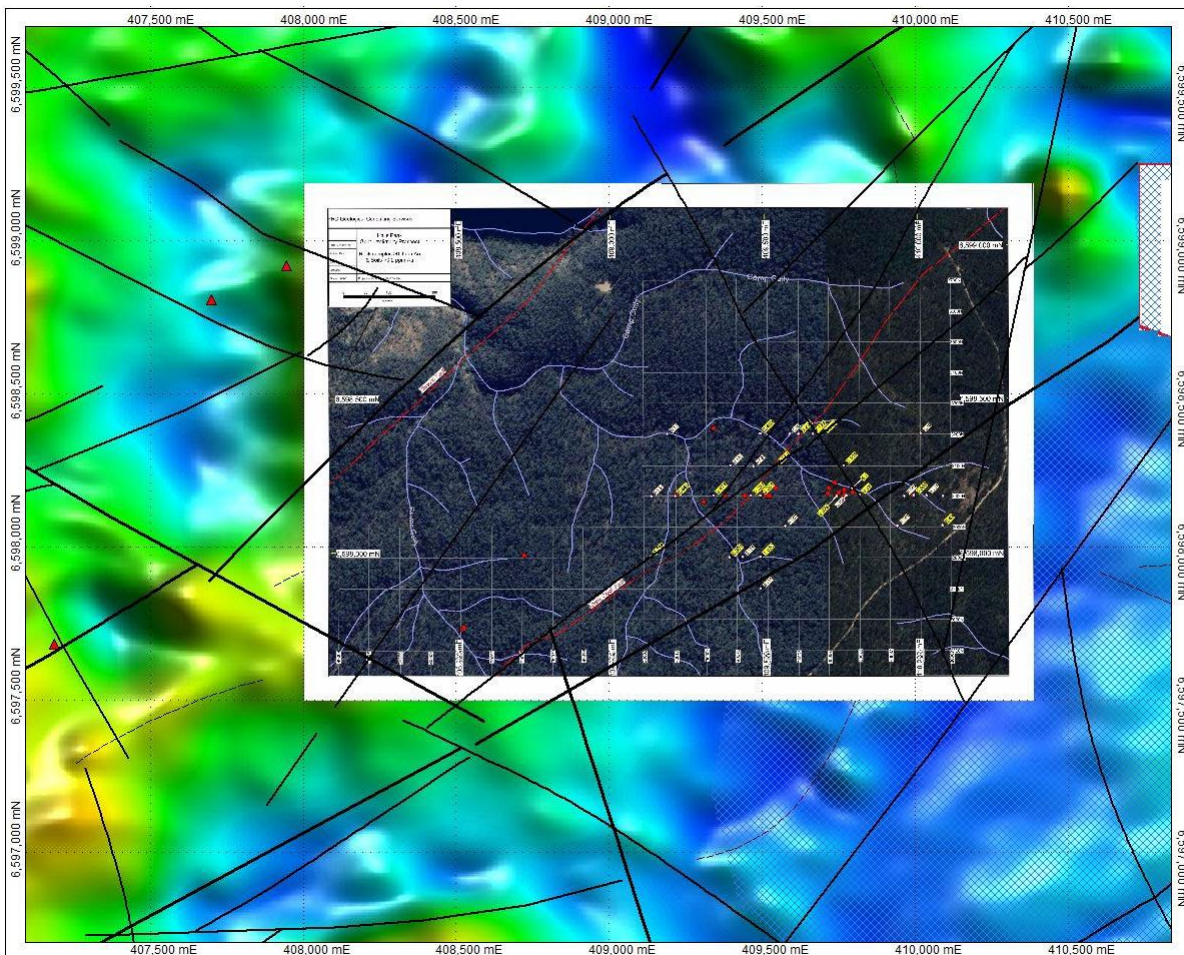


Figure 5: Amoco gold data overlaid on interpreted structures



Significant Antimony Mineralisation from Drilling

Previous drilling has confirmed substantial antimony mineralisation, as highlighted in the October 3, 2024, announcement:

- **Notable drill hole results include:**

- 20,400 g/t Sb over 1.15m (DDHA6)
- 10,000 g/t Sb over 1.24m (CRR21DD_01)
- Elevated antimony values in at least 11 drill holes, with multiple samples exceeding 500 g/t Sb

High-Grade Silver Intercepts

Further analysis of past drilling has also revealed exceptionally high-grade silver mineralisation at the Gibsons Project within Halls Peak, as detailed in the December 4, 2024, announcement:

- **Notable high-silver intercepts include:**

- 3,780 g/t Ag over 1.15m (DDHA6)
- 1,900 g/t Ag over 1.38m (PMR027)
- 1,750 g/t Ag over 1.6m (PMR027)
- More than 130 drill core samples assayed over 100 g/t Ag
- 10 samples exceeded 940 g/t Ag (30 oz/t)

These findings reinforce the district-scale prospectivity of Halls Peak, underscoring its potential as a significant gold-antimony-silver system within structurally controlled mineralized corridors.

Gibson's Prospect MRE

Critical Resources Limited had completed a maiden JORC (2012) compliant Mineral Resource Estimate (MRE) for the Halls Peak Project in New South Wales following a series of successful drilling programs. The 47 diamond core drill holes, completed over four separate campaigns, totaled 6,921 meters and confirmed the presence of multiple stacked lodes containing both base metals (zinc, lead, copper) and precious metals (silver, gold). The drilling has expanded the scale of known mineralization both laterally and vertically, reinforcing the large-scale potential of the Halls Peak System. The Inferred Mineral Resource is estimated at **840,000 tonnes grading 3.7% zinc, 1.5% lead, 0.44% copper, 30 grams per tonne silver, and 0.1 grams per tonne gold at a 2.0% zinc cut-off grade**. Importantly, mineralization remains open along strike and at depth, presenting a clear opportunity for further resource expansion through follow-up drilling.

Pathway for Future Exploration

Based on these findings, a well-structured systematic exploration program is planned to confirm and advance the newly defined targets.

- **Geochemical Sampling & Surface Mapping:**

- Detailed fieldwork will be undertaken to validate aeromagnetic anomalies and structural intersections.
- Soil and rock chip sampling will be conducted along key fault traces to detect pathfinder elements indicative of gold-antimony mineralisation.

- **Ground Geophysics (Magnetics & Induced Polarization - IP):**

- High-resolution ground magnetic surveys over select targets to refine the structural model.
- IP surveys to detect chargeability anomalies associated with sulphide-rich quartz veins.

- **Drill Target Definition & Initial Drilling Program:**

- Once geochemical and geophysical validation is completed, high-priority targets will be identified for drill-testing.
- The focus will be on major structural intersections where multiple fault systems converge.



Quote from Troy Gallik, Exploration Manager:

"The aeromagnetic survey reinterpretation at Halls Peak has provided critical new insights into structural geology and mineralisation potential. The confirmation of major gold-antimony bearing faults, along with previously unrecognized structural targets, sets the stage for a focused and high-impact exploration program. These findings significantly enhance the project's exploration upside and position Halls Peak as a key gold-antimony target within Critical Resources Limited's portfolio."

This announcement has been approved for release by the Board of Directors.

-ends-

For further information please contact;

E: info@criticalresources.com.au

P: +61 (8) 9465 1024

ABOUT CRITICAL RESOURCES LIMITED Critical Resources is focused on the exploration, development and delivery of the critical metals required for a decarbonized future. The Company's Mavis Lake Lithium Project in Ontario, Canada, where it has completed over 45,000m of drilling and defined a maiden Inferred Mineral Resource of 8Mt grading 1.07% Li₂O. Recent exploration success has demonstrated substantial potential to expand this resource and make new discoveries in the surrounding area. Critical is progressing a dual-track strategy at Mavis Lake of targeting resource growth in parallel with multiple permitting and project development workstreams.

The Company's Hall Peak Base Metals Project is located 87km south-east of Armidale New South Wales, Australia, a regional hub in New South Wales. The Company has defined a maiden Inferred Mineral Resource of 884,000t grading 3.7% zinc, 1.5% lead, 0.4% Copper, 30ppm Silver and 0.1ppm Gold has been estimated following numerous drilling campaigns. Modelling has shown that mineralisation is still open along strike to the east/north-east and west/south-west, providing immediate potential to increase the MRE with follow-up drilling.

COMPETENT PERSON, COMPLIANCE STATEMENT The information in this ASX Announcement that relates to Exploration Results is based on information compiled by Mr Michael Leu, a Competent Person who is a member of Australian Institute of Geoscientist (AIG) and the Australian Institute of Mining and Metallurgy (AusIMM) and a consultant of Critical Resources. Mr Leu has sufficient experience that is relevant to the style of mineralisation and type of deposit under consideration and to the activity being undertaken to qualify as a Competent Person as defined in the 2012 Edition of the "Australasian Code for Reporting of Exploration Results, Mineral Resources and Ore Reserves". Mr Leu consents to the inclusion in this Announcement of the matters based on his information in the form and context in which it appears.

This announcement contains information on the Halls Peak Project extracted from ASX market announcements dated 22 November 2021, 30 June 2023, 28 August 2024, 12 September 2024 and 3 October 2024, 8 November 2024, 19 November 2024 4 December 2024, 16 December 2024 and 12 February 2025 reported in accordance with the 2012 JORC Code and available for viewing at www.criticalresources.com.au. The Company confirms that it is not aware of any new information or data that materially affects the information included in any original ASX market announcement.

This information in this ASX Announcement that relates to the Halls Peak Mineral Resource Estimate is extracted from ASX market announcement dated 30 June 2023 and reported in accordance with the 2012 JORC Code and available for viewing at criticalresources.com.au. The Company confirms that it is not aware of any new information or data that materially affects the information included in any original announcement and that all material assumptions and technical parameters underpinning the estimates in the original market announcement continue to apply and have not materially changed.

Halls Peak Project JORC Classification	Zn Cut-Off grade (%)	Tonnage (Mt)	Zn (%)	Pb (%)	Cu (%)	Ag ppm	Au pm	SG (calc)
Inferred	2.0	0.84	3.7	1.5	0.44	30	0.1	2.80
Total*	Inferred	0.84	3.7	1.5	0.44	30	0.1	

*Reported at a cut-off grade of 2% Zn for an open pit mining scenario. Estimation for the model is from the generation of a rotated block model, with blocks dipping 55>330°. Classification is according to JORC Code Mineral Resource categories. Refer to ASX announcement 30 June 2024.



This document contains information relating to the Mineral Resource estimate for the Mavis Lake Lithium Project is extracted from the Company's ASX announcement dated 5 May 2023 and reported in accordance with the 2012 JORC Code and available for viewing at criticalresources.com.au. The Company confirms that it is not aware of any new information or data that materially affects the information included in the original announcement and that all material assumptions and technical parameters underpinning the Mineral Resource estimate continue to apply and have not materially changed.

JORC Classification	Li ₂ O Cut-Off grade (%)	Tonnage (Mt)	Li ₂ O (%)
Inferred	0.3	8.0	1.07
Total*	Inferred	8.0	1.07

*Reported at a cut-off grade of 0.30% Li₂O for an open pit mining scenario. Estimation for the model is by inverse distance weighting. Classification is according to JORC Code Mineral Resource categories. Refer to ASX announcement 5 May 2023, 8.0 Mt at 1.07% Li₂O Maiden Mineral Resource at Mavis Lake.

FORWARD LOOKING STATEMENTS This announcement may contain certain forward-looking statements and projections. Such forward looking statements/projections are estimates for discussion purposes only and should not be relied upon. Forward looking statements/projections are inherently uncertain and may therefore differ materially from results ultimately achieved. Critical Resources Limited does not make any representations and provides no warranties concerning the accuracy of the projections and disclaims any obligation to update or revise any forward-looking statements/projects based on new information, future events or otherwise except to the extent required by applicable laws. While the information contained in this report has been prepared in good faith, neither Critical Resources Limited or any of its directors, officers, agents, employees or advisors give any representation or warranty, express or implied, as to the fairness, accuracy, completeness or correctness of the information, opinions and conclusions contained in this announcement.



Appendix

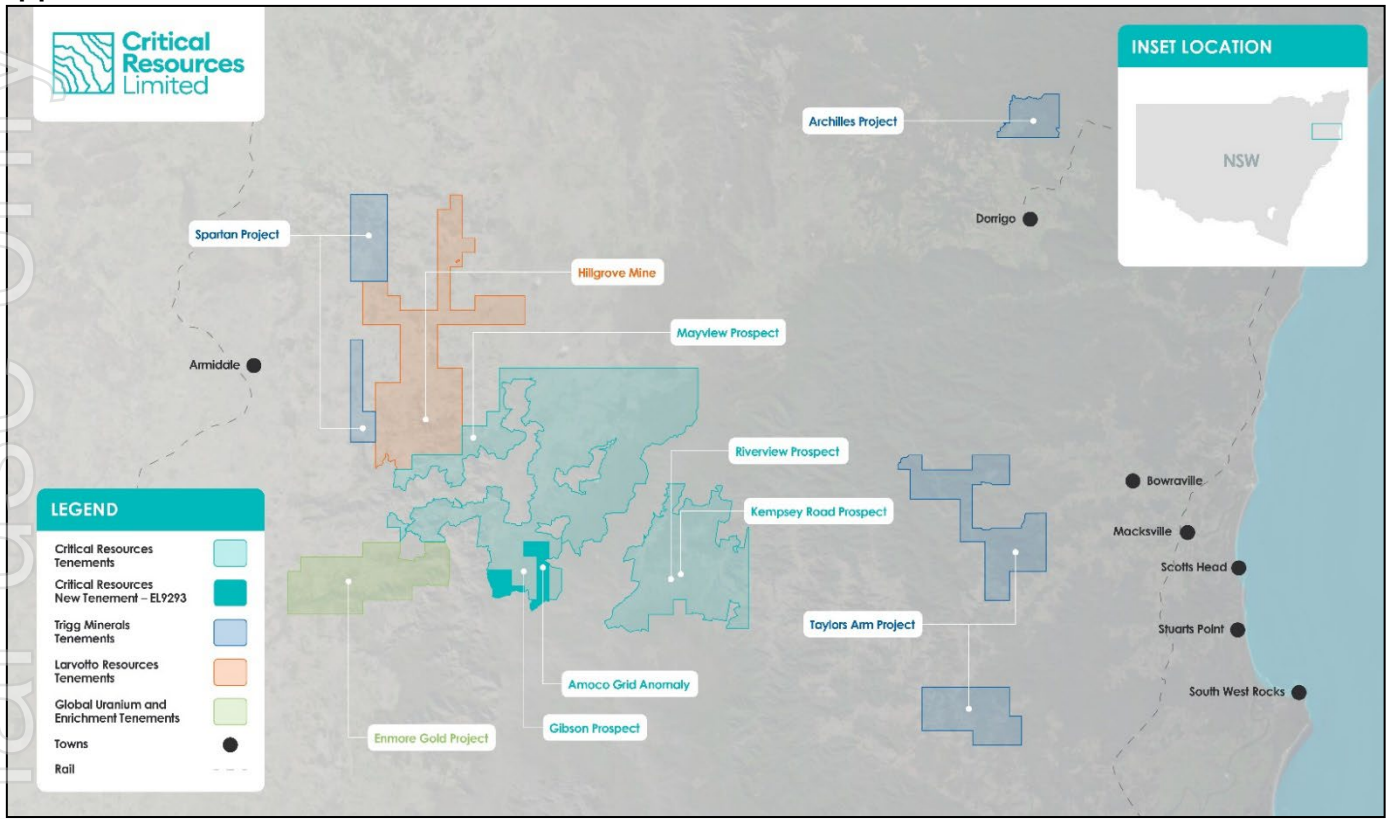


Figure 6: Project Location map showing proximity to significant Antimony-Gold projects in the region.

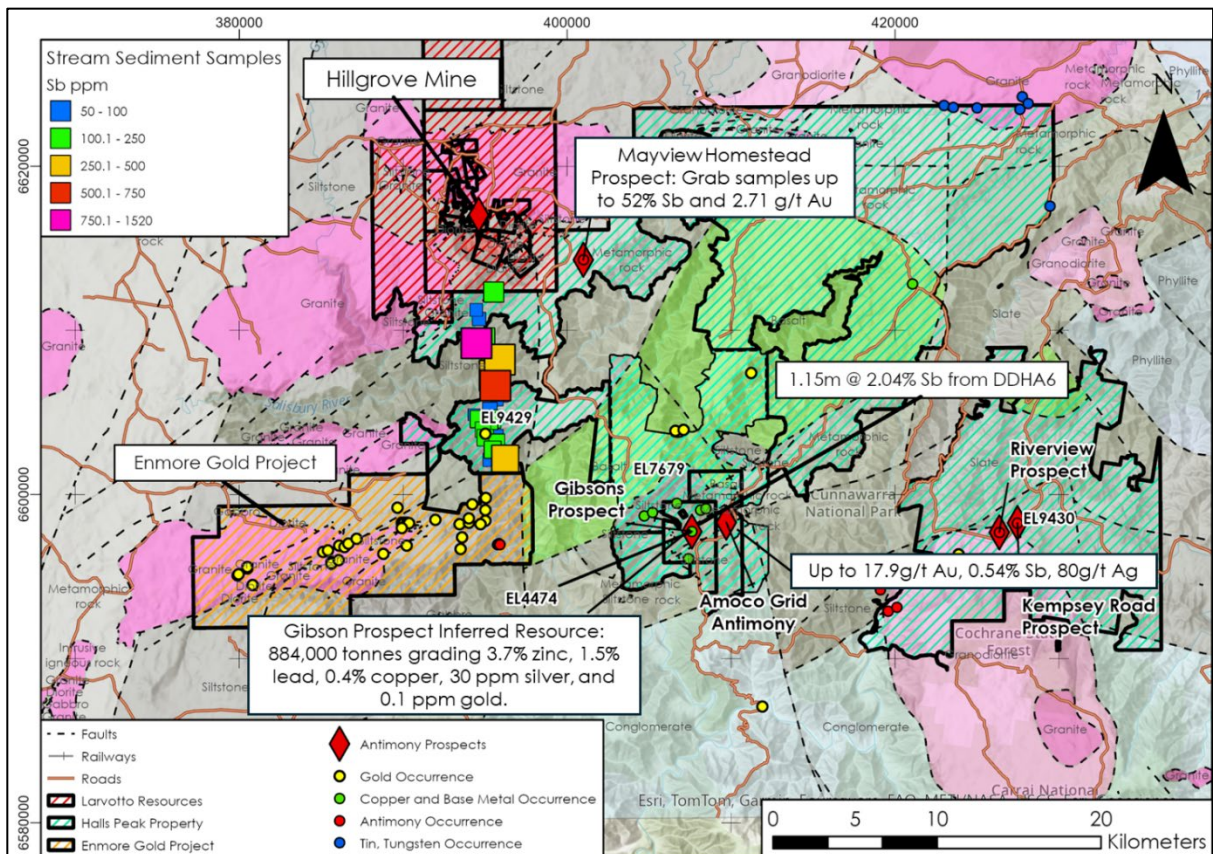


Figure 7: Halls Peak Project Area including the Mayview Homestead showing located proximal to Hillgrove Mine



JORC Code, 2012 Edition – Table 1

Section 1 Sampling Techniques and Data

(Criteria in this section apply to all succeeding sections.)

Criteria	JORC Code explanation	Commentary
Sampling techniques	<ul style="list-style-type: none"> Nature and quality of sampling (e.g., cut channels, random chips, or specific specialised industry standard measurement tools appropriate to the minerals under investigation, such as down hole gamma sondes, or handheld XRF instruments, etc.). These examples should not be taken as limiting the broad meaning of sampling. Include reference to measures taken to ensure sample representivity and the appropriate calibration of any measurement tools or systems used. Aspects of the determination of mineralisation that are Material to the Public Report. In cases where 'industry standard' work has been done this would be relatively simple (e.g., 'reverse circulation drilling was used to obtain 1 m samples from which 3 kg was pulverised to produce a 30 g charge for fire assay'). In other cases more explanation may be required, such as where there is coarse gold that has inherent sampling problems. Unusual commodities or mineralisation types (e.g. submarine nodules) may warrant disclosure of detailed information. 	<ul style="list-style-type: none"> The heliborne geophysical survey was undertaken by contractors Geotech Ltd. (Perth, WA and Aurora, Canada). The survey used a helicopter with a magnetic sensor attached to the suspended EM transmitter loop cable of the VTEM time domain EM system. The VTEM survey data used north-south oriented flight lines with a line separation of 100 metres and a magnetometer sensor height of nominal 92 metres above terrain. This height is determined by the physical suspension of the caesium sensor along the helicopter-suspended EM system (to support the transmitter loop and receiver located at 70 metres above terrain). The 22 metre height difference of the EM system to the magnetometer sensor is an offset designed to reduce the transmitted EM signal inducing noise into the magnetometer. Data was reprocessed by Eureka Consulting Pty Ltd to enhance structural interpretations and identify mineralisation controls. Advanced filtering techniques (First Vertical Derivative, Tilt Derivative, Edge Detection) were applied.
Drilling techniques	<ul style="list-style-type: none"> Drill type (e.g. core, reverse circulation, open-hole hammer, rotary air blast, auger, Bangka, sonic, etc.) and details (e.g. core diameter, triple or standard tube, depth of diamond tails, face-sampling bit or other type, whether core is oriented and if so, by what method, etc.). 	<ul style="list-style-type: none"> Not applicable, as no drilling was conducted in this phase.
Drill sample recovery	<ul style="list-style-type: none"> Method of recording and assessing core and chip sample recoveries and results assessed. Measures taken to maximise sample recovery and ensure representative nature of the samples. Whether a relationship exists between sample recovery and grade and whether sample bias may have occurred due to preferential loss/gain of fine/coarse material. 	<ul style="list-style-type: none"> Not applicable.
Logging	<ul style="list-style-type: none"> Whether core and chip samples have been geologically and geotechnically logged to a level of detail to support appropriate Mineral Resource estimation, mining studies and metallurgical studies. 	<ul style="list-style-type: none"> Not applicable. The study relied on geophysical interpretations and historical mapping data.



Criteria	JORC Code explanation	Commentary
	<ul style="list-style-type: none"> Whether logging is qualitative or quantitative in nature. Core (or costean, channel, etc.) photography. The total length and percentage of the relevant intersections logged. 	
Sub-sampling techniques and sample preparation	<ul style="list-style-type: none"> If core, whether cut or sawn and whether quarter, half or all core taken. If non-core, whether riffled, tube sampled, rotary split, etc. and whether sampled wet or dry. For all sample types, the nature, quality and appropriateness of the sample preparation technique. Quality control procedures adopted for all sub-sampling stages to maximise representivity of samples. Measures taken to ensure that the sampling is representative of the in situ material collected, including for instance results for field duplicate/second-half sampling. Whether sample sizes are appropriate to the grain size of the material being sampled. 	<ul style="list-style-type: none"> Not applicable. Data was obtained through airborne geophysical surveys and reprocessed for structural interpretation.
Quality of assay data and laboratory tests	<ul style="list-style-type: none"> The nature, quality and appropriateness of the assaying and laboratory procedures used and whether the technique is considered partial or total. For geophysical tools, spectrometers, handheld XRF instruments, etc., the parameters used in determining the analysis including instrument make and model, reading times, calibrations factors applied and their derivation, etc. Nature of quality control procedures adopted (e.g. standards, blanks, duplicates, external laboratory checks) and whether acceptable levels of accuracy (i.e. lack of bias) and precision have been established. 	<ul style="list-style-type: none"> The aeromagnetic data was processed and interpreted using proprietary grid industry-standard geophysical techniques. Historical geochemical and drilling data were cross-referenced to validate interpretations.
Verification of sampling and assaying	<ul style="list-style-type: none"> The verification of significant intersections by either independent or alternative company personnel. The use of twinned holes. Documentation of primary data, data entry procedures, data verification, data storage (physical and electronic) protocols. Discuss any adjustment to assay data. 	<ul style="list-style-type: none"> The geophysical data was processed by Eureka Consulting Pty Ltd and verified against historical geological and geophysical datasets.
Location of data points	<ul style="list-style-type: none"> Accuracy and quality of surveys used to locate drill holes (collar and down-hole surveys), trenches, mine workings and other locations used in Mineral Resource estimation. Specification of the grid system used. Quality and adequacy of topographic control. 	<ul style="list-style-type: none"> The airborne magnetic survey was conducted over exploration licences EL4474, EL7679, and EL9293 in New England, NSW. Data is referenced to GDA94 coordinate system.



Criteria	JORC Code explanation	Commentary
Data spacing and distribution	<ul style="list-style-type: none"> Data spacing for reporting of Exploration Results. Whether the data spacing and distribution is sufficient to establish the degree of geological and grade continuity appropriate for the Mineral Resource and Ore Reserve estimation procedure(s) and classifications applied. Whether sample compositing has been applied. 	<ul style="list-style-type: none"> Data coverage was continuous over the surveyed area, providing high-resolution magnetic data to refine structural models.
Orientation of data in relation to geological structure	<ul style="list-style-type: none"> Whether the orientation of sampling achieves unbiased sampling of possible structures and the extent to which this is known, considering the deposit type. If the relationship between the drilling orientation and the orientation of key mineralised structures is considered to have introduced a sampling bias, this should be assessed and reported if material. 	<ul style="list-style-type: none"> The survey orientation was designed to detect fault structures controlling mineralisation. Multiple filtering techniques were applied to minimize bias.
Sample security	<ul style="list-style-type: none"> The measures taken to ensure sample security. 	<ul style="list-style-type: none"> Data was handled and processed by Eureka Consulting Pty Ltd under secure conditions.
Audits or reviews	<ul style="list-style-type: none"> The results of any audits or reviews of sampling techniques and data. 	<ul style="list-style-type: none"> The geophysical review was conducted qualified geophysical consultant.

Section 2 Reporting of Exploration Results

(Criteria listed in the preceding section also apply to this section.)

Criteria	JORC Code explanation	Commentary
Mineral tenement and land tenure status	<ul style="list-style-type: none"> Type, reference name/number, location and ownership including agreements or material issues with third parties such as joint ventures, partnerships, overriding royalties, native title interests, historical sites, wilderness or national park and environmental settings. The security of the tenure held at the time of reporting along with any known impediments to obtaining a licence to operate in the area. 	<ul style="list-style-type: none"> CRR holds five granted Exploration Licences (EL4474, EL7679, EL9428, EL9429, EL9430), northeast of Armidale N.S.W., that encompass a total of 946km². All tenements are granted. EL4474 and EL7679 are currently in process of renewal applications.
Exploration done by other parties	<ul style="list-style-type: none"> Acknowledgment and appraisal of exploration by other parties. 	<ul style="list-style-type: none"> All historical exploration records are publicly available via the Geological Survey of New South Wales DIGS website. Key sources of exploration data generated by other parties include: Open File, DIGS Records, Geological Survey of New South Wales Report: Gilligan, L.B., Brownlow, J.W., Cameron R. G., Henley, H. F. & Degeling, P. R., 1992. Dorrigo-Coffs Harbour 1:250,000 metallogenic map SH/56-10, SH/56-11: metallogenic study and mineral deposit data sheets, 509pp., Geological Survey of N.S.W., Sydney. Open File, DIGS Records, Geological Survey of New South Wales Report:



For personal use only

Criteria	JORC Code explanation	Commentary
		<p>GS1983/357(R00009703-9704) Two exploration reports, EL1427 & 1742, Halls Peak area. Gardiner, G. for Amoco Minerals Australia Co.</p> <ul style="list-style-type: none"> • Gardiner, G., 1983. <i>Final Report, Halls Peak, Exploration Licences 1427 and 1742, New South Wales, Amoco Minerals Australia Co., GS1983/360 R00014317.</i> • Open File, DIGS Records, Geological Survey of New South Wales Report: English, P.W., 1979. <i>Halls Peak P.L.s 345 & 353 N.S.W. Six Monthly Report to the Mines Department, July 1978 to January 1979, CRA Exploration Limited, GS1979/142.</i> • Open File, DIGS Records, Geological Survey of New South Wales Report: Kennewell, P. J., P.R. Degeling and Gentle, L.V., 2013. <i>Annual Report for Exploration Licences 4474 and 5339, Halls Peak Project for Reporting Period 13 January 2012 to 12 January 2013. Open File, DIGS Records, Geological Survey of New South Wales Report: Twentieth_Annual_Exploration_Report_o n_E_RE0004361</i> • Precious Metal Resources ASX Announcement <i>Significant Gold Anomalies Suggest Potential for Hillgrove Style Gold/Antimony Deposits, 23rd October 2012</i> • Ashley, P.M. 2024. <i>Petrographic Report on Nine Rock Samples from the Barraba Area, Northern NSW, and North and Central Queensland, August 2024</i> • England, R.N., 2003, <i>Petrographic Notes for 9 Samples from the Hall's Peak Area, Southern New England Fold</i> • Belt • England, R.N., 2004, <i>Petrographic Notes for 17 Samples from the Hall's Peak Area.</i> • DIGS Records, Geological Survey of New South Wales Open File Reports specifically detailing knowledge on the Amoco Grid Hillgrove-style Orogenic Gold-Antimony System and the CRA-BHP drilling • Leu, M. R., 1998. <i>Annual Reports EL 4474, Halls Peak Area, Armidale Mining District for period 13th January 1996 to 12th January 1998. Holder EL 4474 – N. N. Dennis. Open File, DIGS Records, Geological Survey of New South Wales Report: 1996-1998 Combined_fourth_and_fifth_annual_expl ora_R00020818.</i> • Leu, M. R. & Rogers A., 2000, <i>Annual Report for Exploration Licence Nos 4474 (N. N. Dennis) and 5339 (Wildesign Pty.</i>



For personal use only

Criteria	JORC Code explanation	Commentary
		<p>Ltd.) for period 13th January 1999 to 12th January 2000. Open File, DIGS Records, Geological Survey of New South Wales Report:</p> <ul style="list-style-type: none">• Leu, M. R., 2001. Annual Report for Exploration Licence Nos 4474 (N. N. Dennis) and 5339 (Wildesign Pty. Ltd.) for period 13th January 2000 to 12th January 2001. Open File, DIGS Records, Geological Survey of New South Wales Report: Eighth_ annual_ exploration_ report, _EL_447_R00019769• Leu, M. R., 2002. Annual Report for Exploration Licence Nos 4474 (N. N. Dennis) and 5339 (Wildesign Pty. Ltd.) for period 13th January 2001 to 12th January 2002. Open File, DIGS Records, Geological Survey of New South Wales Report: Ninth_ annual_ exploration_ report, _EL_4474_R00032998• Leu, M. R., 2003. Annual Report for Exploration Licence Nos 4474 (N. N. Dennis) and 5339 (Wildesign Pty. Ltd.) for period 13th January 2002 to 12th January 2003. Open File, DIGS Records, Geological Survey of New South Wales Report: Tenth_ annual_ exploration_ report, _EL_4474_R00047867• Leu, M. R., 2004. Annual Report for Exploration Licence Nos 4474 (N. N. Dennis) and 5339 (Wildesign Pty. Ltd.) for period 13th January 2003 to 12th January 2004. Open File, DIGS Records, Geological Survey of New South Wales Report: Eleventh_ Annual_ exploration_ report, _EL_4474_and_5_R00051516_Petr• Leu, M. R., 2011. Annual Report for Exploration Licences 4474 and 5339 for period 13th January 2010 to 12th January 2011. Holder PMR1 Pty. Ltd. Open File, DIGS records, Geological Survey of New South Wales Report: Eighteenth_ Annual_ Exploration_ Report_ on_ RE0002327• Leu, M. R., Rebek, J., Kennewell, P., Degeling, P. R., Wang, Y. Robertson, R. A., 2016. Annual Report for Exploration Licences 4474 and 5339, Halls Peak Project, Reporting Period 13th January 2015 to 12th January 2016. DIGS Records Geological Survey of New South Wales Report: Twenty-third_ Annual_ Exploration_ Report_ on_ RE0008131• Leu M. R., 2023. Exploration Licence 9293, Annual Report for period ending 16th September 2023. Holder Golden Plateau



Criteria	JORC Code explanation	Commentary
		<p>Pty. Ltd. Open File, DIGS records, Geological Survey of New South Wales, Restricted.</p> <ul style="list-style-type: none"> Larvotto Resources (ASX:LRV) ASX Announcement 10 September 2024. Presentation, New World Metals Conference, Hillgrove Gold-Antimony Project Red River Resources Limited ASX Release September 2019 Hillgrove Gold-Antimony Project Site Visit Historical geophysical surveys and mapping have been integrated into the new interpretation. Previous drilling confirmed mineralisation potential.
Geology	<ul style="list-style-type: none"> Deposit type, geological setting and style of mineralisation. 	<ul style="list-style-type: none"> Potential Hillgrove-style Orogenic Antimony-Gold System
Drill hole Information	<ul style="list-style-type: none"> A summary of all information material to the understanding of the exploration results including a tabulation of the following information for all Material drill holes: <ul style="list-style-type: none"> easting and northing of the drill hole elevation or RL (Reduced Level – elev above sea level in metres) of the drill collar dip and azimuth of the hole down hole length and interception depth hole length. If the exclusion of this information is justified on the basis that the information is not Material and this exclusion does not detract from the understanding of the report, the Competent Person should clearly explain why this is the case. 	<ul style="list-style-type: none"> Not applicable, no drilling undertaken or reported.
Data aggregation methods	<ul style="list-style-type: none"> In reporting Exploration Results, weighting averaging techniques, maximum and/or minimum grade truncations (e.g. cutting of high grades) and cut-off grades are usually Material and should be stated. Where aggregate intercepts incorporate short lengths of high grade results and longer lengths of low grade results, the procedure used for such aggregation should be stated and some typical examples of such aggregations should be shown in detail. The assumptions used for any reporting of metal equivalent values should be clearly stated. 	<ul style="list-style-type: none"> No weighting of averaging techniques has been utilized. No aggregations are reported. No metal equivalents were used or calculated. Not applicable. Geophysical anomalies were identified and ranked for further investigation.
Relationship between mineralisation widths and	<ul style="list-style-type: none"> These relationships are particularly important in the reporting of Exploration Results. 	<ul style="list-style-type: none"> N/A, no drilling undertaken or reported N/A, no drilling undertaken or reported N/A, no drilling undertaken or reported



Criteria	JORC Code explanation	Commentary
intercept lengths	<ul style="list-style-type: none"> If the geometry of the mineralisation with respect to the drill hole angle is known, its nature should be reported. If it is not known and only the down hole lengths are reported, there should be a clear statement to this effect (e.g. 'down hole length, true width not known'). 	
Diagrams	<ul style="list-style-type: none"> Appropriate maps and sections (with scales) and tabulations of intercepts should be included for any significant discovery being reported. These should include, but not be limited to a plan view of drill hole collar locations and appropriate sectional views. 	<ul style="list-style-type: none"> Pertinent maps for this stage of Project are included in the release. Coordinates in GDA94 Figures included in the report display Total Magnetic Intensity (TMI) and Residual Total Field (RTP) magnetics over known mineralisation areas.
Balanced reporting	<ul style="list-style-type: none"> Where comprehensive reporting of all Exploration Results is not practicable, representative reporting of both low and high grades and/or widths should be practiced to avoid misleading reporting of Exploration Results. 	<ul style="list-style-type: none"> The announcement details all identified targets and geophysical interpretations without exaggeration.
Other substantive exploration data	<ul style="list-style-type: none"> Other exploration data, if meaningful and material, should be reported including (but not limited to): geological observations; geophysical survey results; geochemical survey results; bulk samples – size and method of treatment; metallurgical test results; bulk density, groundwater, geotechnical and rock characteristics; potential deleterious or contaminating substances. 	<ul style="list-style-type: none"> The survey identified 36 high-priority targets within faulted zones. Advanced filtering techniques were applied to refine structural interpretations.
Further work	<ul style="list-style-type: none"> The nature and scale of planned further work (e.g. tests for lateral extensions or depth extensions or large-scale step-out drilling). Diagrams clearly highlighting the areas of possible extensions, including the main geological interpretations and future drilling areas, provided this information is not commercially sensitive. 	<ul style="list-style-type: none"> Future work includes geochemical sampling, ground-based geophysics, and targeted drilling to test priority structures.