

# EXCELLENT COPPER RESULTS

Rock chips to 42.6% Cu and channel samples to 6m @ 2.13% Cu

## HIGHLIGHTS

- Phoenix Copper Project (Project) is located along strike from the currently producing 740Mlb Lisbon Valley Copper Mine (LVCC) within the world-class Lisbon Valley Mining District, Utah, Colorado, USA<sup>1</sup>.
- **Six priority Targets** having potential to host copper mineralisation in a similar structural and geological setting to that exploited at LVCC<sup>2</sup>.
- **Target 1: (Philadelphia Prospect)** Channel sampling of outcropping mineralised zones returned significant results including:
  - **6m @ 2.13% Cu, incl. 1m @ 7.16% Cu**
  - **2m @ 2.40% Cu**
  - **3m @ 1.28% Cu**
  - **10m @ 0.55% Cu**
- Previous sampling identified copper mineralisation over a 750m strike<sup>3</sup>.
- **Target 2:** copper mineralisation in a road cut. Grab samples containing significant results include:
  - **8.21% Cu and 36 g/t Ag**
  - **4.66% Cu**
  - **2.74% Cu**
  - **0.86% Cu and 48 g/t Ag**
- **Target 4:** reconnaissance grab sampling returned **42.6% Cu and 211 g/t Ag**
- **Target 5:** grab sample from a dozer scrape at its NW extent returned **14.7% Cu and 55 g/t Ag**.
- The Project lies in a prolific copper producing region with the State of Utah that produced 700 Mlbs of copper in 2023, ranking it as the 2nd largest copper producing state in the USA<sup>4</sup>.
- Copper prices continue to surge with LME price ~US\$9,855/t<sup>5</sup>

## NEXT STEPS

- Exploration is ongoing with mapping and soil and rock sampling programs to deliver **drill targets expected to be tested in 2025**.



For personal use only

**Diablo's Chairman Paul Lloyd commented:**

*“Initial sampling and reconnaissance on the identified **Targets** have returned some very exciting results clearly demonstrating the excellent potential to identify further copper mineralisation. The ongoing exploration includes soil geochemistry, geological mapping and reconnaissance sampling.*

*The structural and geological interpretation has enabled the focus of the exploration going forward to rapidly identify multiple drill targets with the aim to test the most promising in 2025.”*

**Diablo Resources Ltd (ASX:DBO)** is pleased to present the initial results from the ongoing exploration on its 100% owned Phoenix Copper Project, located in southwestern USA, proximal to the Utah/Colorado border. The Project contains sediment hosted copper mineralisation and lies along strike from an operating copper mining in a similar geological setting.

**OVERVIEW**

The Phoenix Copper Project is located in southwestern USA, approximately 70km southwest of Moab proximal to the Utah/Colorado border. Access is year-round utilising sealed and maintained gravel roads.



**Figure 1 – Phoenix Copper Project – Location Plan**

The project consists of two separate areas, the CC and Stateline Claim Blocks, located to the northwest and southeast respectively along strike from the Lisbon Valley Copper Mine (operated by Lisbon Valley Copper Corporation – LVCC). The project consists of 292 unpatented lode claims covering 5,840 acres (23.6 km<sup>2</sup>).

For personal use only



Little recent copper exploration has been completed within the project targeting known copper mineralisation in a highly mineralised district. The staked claim blocks were identified by the DBO team to host copper mineralisation on strike extensions and within the similar geological settings as being mined at the Lisbon Valley Copper Mine.

## CC CLAIM BLOCK

The **CC Claim Block** is located ~5 km northwest of the LVCC operations and ~3km south of the historical Big Indian Copper Mine that produced 150,000t of copper ore averaging 1.5% primarily during WWII<sup>6</sup>. It consists of 143 unpatented lode claims for 2,860 acres (11.6 km<sup>2</sup>) staked on Bureau of Land Management (BLM) administered Federal lands (Figures 1 & 2).

### Geological / Structural Interpretation and Targeting

The CC Claim Block Covers a portion of the Lisbon Valley localized on a northwest-trending, double plunging anticline (arch-shaped fold). The western and central portion of the claim block are underlain predominantly by sandstones/siltstones and carbonate of the Hermosa Group. The claim block is cut by two major NW-SE trending faults; the Lisbon Valley Fault (LVF) in the west and the east dipping, Eastern Bounding Fault (EBF). The northeastern portion of the claim block is underlain by Dakota Sandstones and Burro Canyon Formation displaced downwards along the EBF.

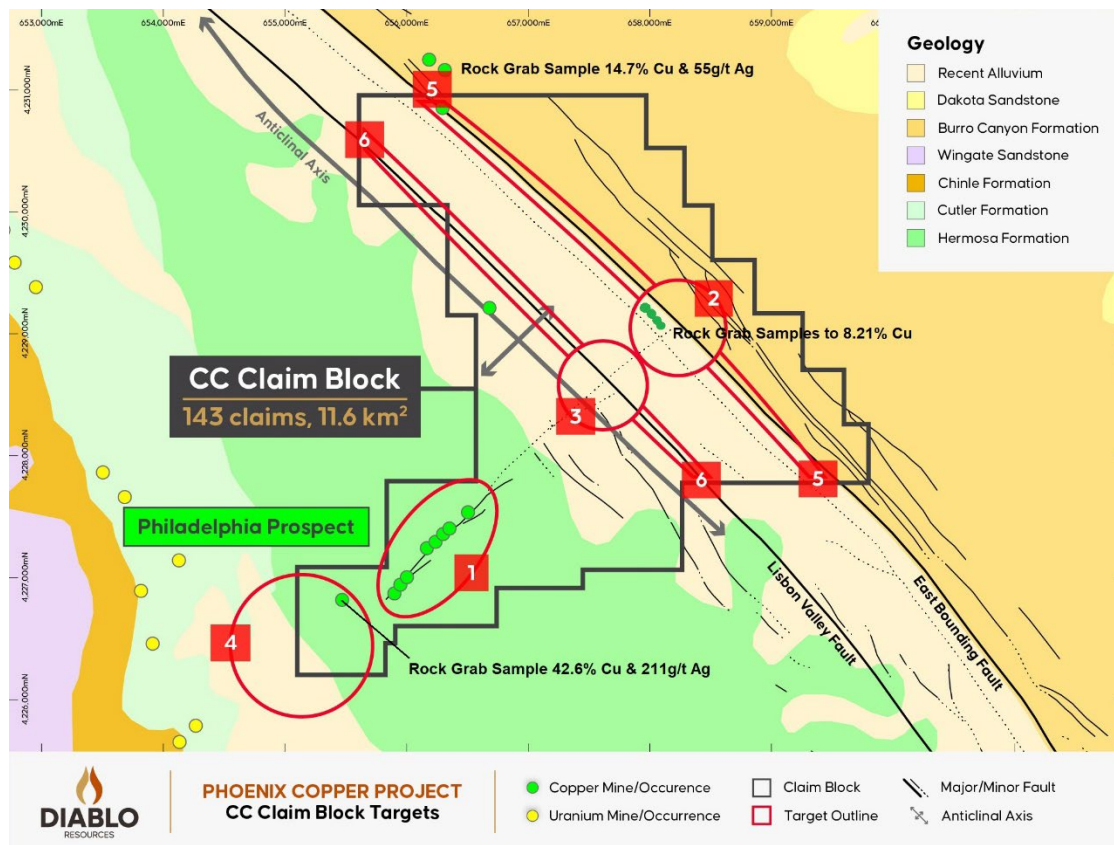


Figure 2 – Geological / Structural Interpretation and Targeting



For personal use only

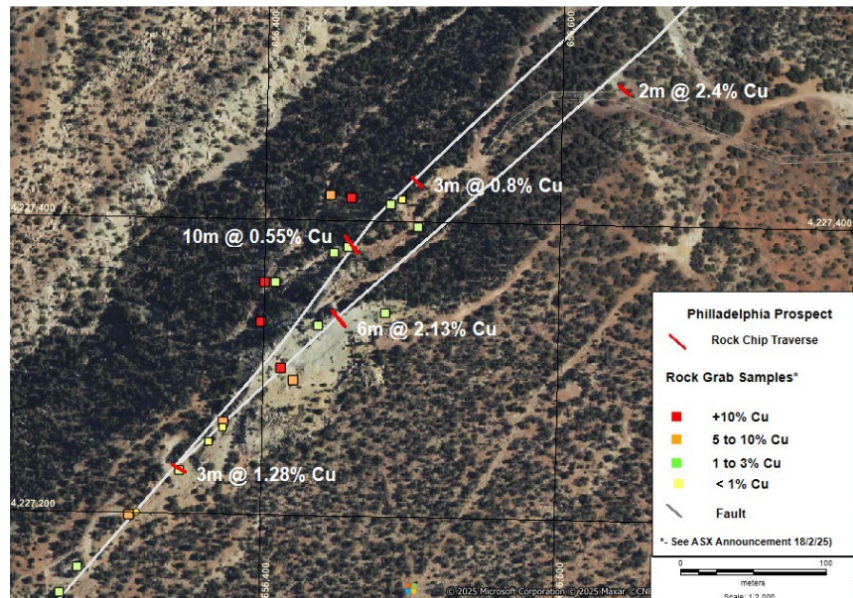
DBO previously completed geological / structural interpretation and targeting on the CC Claim Block identifying **6 Targets** that are considered highly prospective for copper mineralisation (Figure 2).

### Recent Exploration

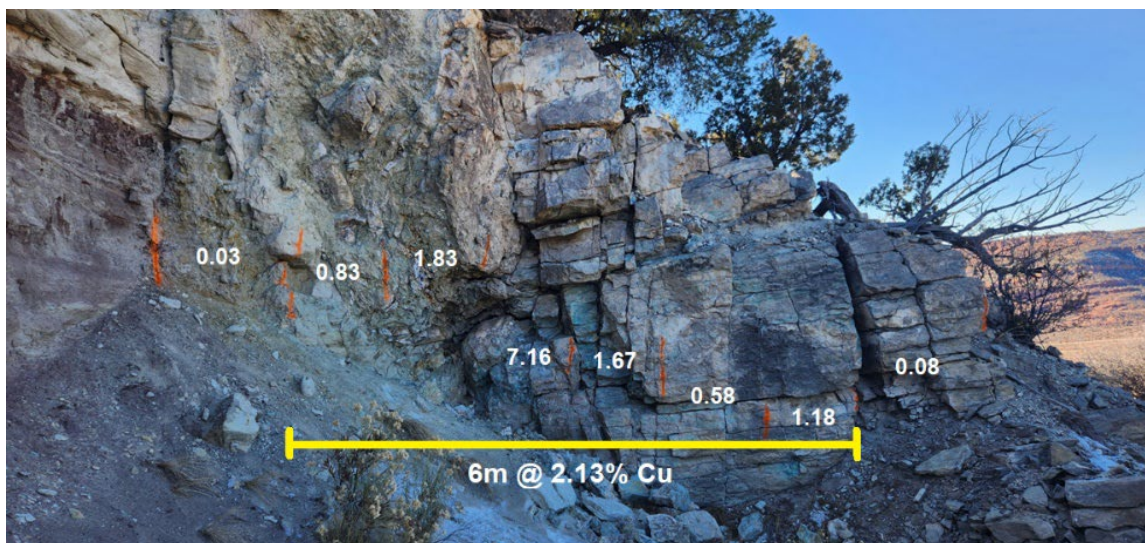
Recent exploration covering these Targets has proven highly successful:

**Target 1: (Philadelphia Prospect)** Chip channel sampling was completed across 5 outcropping mineralised zones over a 400m strike length on both the interpreted main fault and possible subsidiary splays indicating multiple mineralised zones (Figures 3, 4, 5 & Table 1). This sampling was completed as follow-up to the highly encouraging initial results at the Philadelphia Prospect where 31 grab samples taken from outcrop and dumps along the 750m strike of the prospect averaged 6.29% Cu, ranging from 0.5% Cu to 45.7% Cu and 219 g/t Ag (~7oz Ag)<sup>3</sup>. Results from the recent chip channel sampling (from SW to NE) include:

- 3m @ 1.28% Cu
- 6m @ 2.13% Cu, incl 1m @ 7.16% Cu
- 10m @ 0.55% Cu
- 3m @ 0.8% Cu and
- 2m @ 2.4% Cu



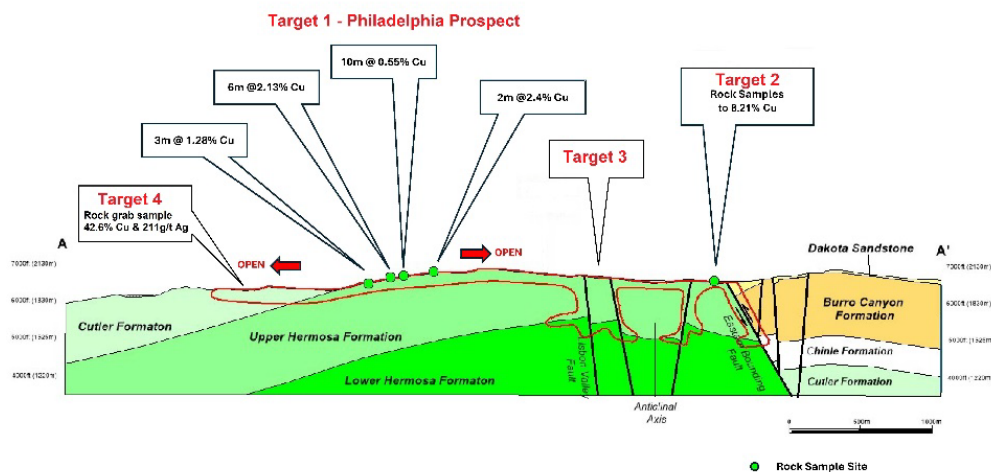
**Figure 3**  
**Philadelphia Prospect**  
**Sample Locations**  
**and Results**



**Figure 4 - Philadelphia Prospect - Rock Chip Sampling Traverse looking SW**



For personal use only



**Figure 5 – CC Claim Block - Cross Section Looking NW**

**Target 2:** copper mineralised float has been identified in a road cut within **Target 2**. Samples (CC25-01-to CC25-05) returned significant results including:

- **8.21% Cu and 36 g/t Ag**
- **4.66% Cu**
- **2.74% Cu**
- **0.86% Cu and 48 g/t Ag**

The mineralisation is located 150m northwest of the interpreted intersection of the Philadelphia Prospect structure and the EBF, a prime exploration target area, largely covered by transported valley fill material (Figures 2, 5 & Table 1).

**Target 4:** reconnaissance grab sample returned **42.6% Cu and 211g/t Ag** from malachite stained float along the projected trace of the Philadelphia Prospect structure (Figures 2, 5 & Table 1). This Target covers the intersection of the structure with the overlying Cutler and Chinle sandstones. The Chinle is host to the majority of the uranium and some copper mineralisation in the Lisbon Valley.

**Target 5:** **14.7% Cu and 55g/t Ag** was returned from a grab sample in a dozer scrape in the northwest of the Target. The Target covers both the NW and SE extensions of the EBF and was also identified as prospective in a 1981 report on the geology and mineralisation of the Lisbon Valley<sup>6</sup>. Both the fault zone and hanging wall are highly prospective for copper mineralisation with the majority of the fault covered by recent valley fill. Further claims have been staked to cover the NW extension of the Target (Figure 2 & Table 1).

The sampling to date at **Philadelphia Prospect** is indicative of parallel and splay structures hosting copper mineralisation. Drilling will be required to test the extent of the mineralised system.

In addition to the above chip channel sampling, geological reconnaissance has identified **malachite** in a road cut lying within **Target 2**, at the northeast extent of **Target 5** and SW of the Philadelphia Prospect in **Target 4** significantly enhancing the overall prospectivity of the Project.



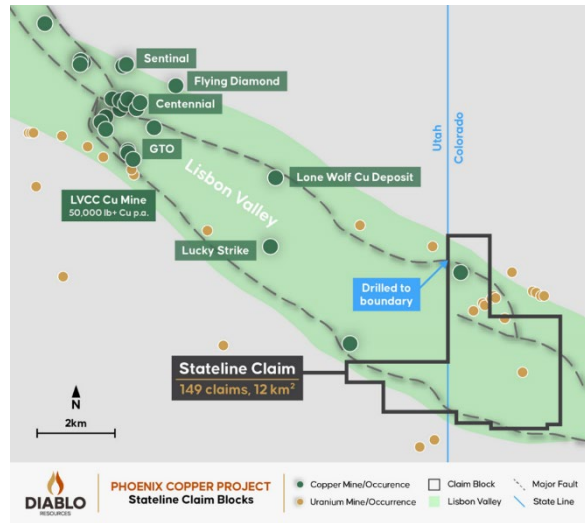
For personal use only

## STATELINE CLAIM BLOCK

The **Stateline Claim Block** consists of 149 unpatented lode claims for 2,980 acres (12km<sup>2</sup>) on BLM administered Federal lands located south east of the Lisbon Valley copper mine covering highly prospective structural and geological trends (Figure 6).

It lies 5km SW along strike from the Lone Wolf Deposit, first documented in 1981, that now contains a 60Mt resource containing 12.1Kt (267Mlbs) of recoverable copper<sup>7</sup>.

Due diligence reconnaissance on Stateline has located outcropping malachite (copper oxide) in altered sandstone with handheld XRF readings showing it to be anomalous in Cu and Co.



**Figure 6 – Stateline Claim Block**

The Stateline Prospect overlies the interpreted extensions of known mineralised faults and prospective geological units that control and host the copper mineralisation in the Lisbon Valley.

### EXPLORATION - NEXT STEPS

- Soil and rock sampling in conjunction with geological mapping is ongoing in the CC Claim Block. This exploration will address the identified Targets in order of priority to identify drill targets.
- **The intent is to drill test identified targets in 2025.**

**-END-**

This announcement has been authorised for release by the Board.

For more information visit [diablorresources.com.au](http://diablorresources.com.au) or contact:

Paul Lloyd  
Chairman  
P: +61 419 945 395  
Email : [pl@diablorresources.com.au](mailto:pl@diablorresources.com.au)



For personal use only

### Competent Persons Statement

The information in this announcement that relates to the Project (including the information provided pursuant to ASX Listing Rules 5.12.2 to 5.12.7 (inclusive)) is based on, and fairly represents information compiled by Lyle Thorne who is a Member of the Australasian Institute of Mining and Metallurgy (AusIMM) and has sufficient experience relevant to the style of mineralisation and type of deposit under consideration and to the activity to which he is undertaking to qualify as a Competent Person as defined in the 2012 Edition of the "Australasian Code for Reporting of Exploration Results, Mineral Resources and Ore Reserves". Mr. Thorne is an Employee of the Company and holds shares in the Company. Mr. Thorne consents to the inclusion in this announcement of the matters based on this information in the form and context in which it appears.

### Future Performance

This announcement may contain certain forward-looking statements and opinion. Forward-looking statements, including projections, forecasts and estimates, are provided as a general guide only and should not be relied on as an indication or guarantee of future performance and involve known and unknown risks, uncertainties, assumptions, contingencies and other important factors, many of which are outside the control of the Company and which are subject to change without notice and could cause the actual results, performance or achievements of the Company to be materially different from the future results, performance or achievements expressed or implied by such statements. Past performance is not necessarily a guide to future performance and no representation or warranty is made as to the likelihood of achievement or reasonableness of any forward-looking statements or other forecast. Nothing contained in this announcement, nor any information made available to you is, or and shall be relied upon as, a promise, representation, warranty or guarantee as to the past, present or the future performance of Diablo.

### References -

1. <https://lisbonmine.com/operations-copper-resources/>
2. Diablo Announcement, March 17, 2025, 6 Targets
3. Diablo Announcement, February 18, 2025, New High-Grade Near-Mine Copper Project
4. <https://worldpopulationreview.com/state-rankings/copper-production-by-state>
5. <https://www.lme.com/en/metals/non-ferrous/lme-copper>
6. 1981, Open-File Report 81-39, Gordon W. Weir and Willard P. Puffett, stratigraphy and structural geology and uranium-vanadium and copper deposits of the Lisbon Valley area, Utah-Colorado
7. Plan of Operations: Lisbon Valley Mining Company. Lower Lisbon Valley Operations (UTU72499). April 2023. [https://eplanning.blm.gov/public\\_projects/](https://eplanning.blm.gov/public_projects/)



**Table 2 - Philadelphia Prospect - Sample Results**

Sample_ID	East NAD83 Z12	North NAD83 Z12	Cu_%	Ag_g/t	Description
CC24-24	656345	4227230	1.28	5	3m chip channel
CC24-32	656313	4231189	14.70	55	grab float
CC24-33	655573	4226882	42.60	211	grab float
CC25-1	658003	4229317	0.30	1	grab road cut
CC25-2	658063	4229272	4.66	7	grab road cut
CC25-3	658083	4229260	8.21	36	grab road cut
CC25-4	658100	4229242	0.86	5	grab road cut
CC25-5	658145	4229203	2.74	48	grab road cut
CC25-6	656452	4227333	0.03	1	1m chip channel
CC25-7	656451	4227333	0.83	1	1m chip channel
CC25-8	656450	4227334	1.39	14	1m chip channel
CC25-9	656449	4227335	7.16	31	1m chip channel
CC25-10	656448	4227336	1.68	7	1m chip channel
CC25-11	656447	4227337	0.58	1	1m chip channel
CC25-12	656447	4227338	1.20	2	1m chip channel
CC25-13	656446	4227339	0.08	1	1m chip channel
CC25-14	656454	4227390	0.14	2	1m chip channel
CC25-15	656454	4227388	0.23	1	1m chip channel
CC25-16	656455	4227387	0.42	2	1m chip channel
CC25-17	656454	4227385	0.94	1	1m chip channel
CC25-18	656455	4227384	0.10	1	1m chip channel
CC25-19	656456	4227384	0.15	<1	1m chip channel
CC25-20	656455	4227383	0.17	<1	1m chip channel
CC25-21	656456	4227382	2.06	3	1m chip channel
CC25-22	656456	4227381	0.38	2	1m chip channel
CC25-23	656458	4227380	0.97	3	1m chip channel
CC25-24	656502	4227425	0.77	3	1m chip channel
CC25-25	656501	4227426	0.95	3	1m chip channel
CC25-26	656500	4227428	0.65	1	1m chip channel
CC25-27	656642	4227493	0.11	2	1m chip channel
CC25-28	656640	4227492	4.70	7	1m chip channel
CC25-29	656682	4227556	0.19	2	1m chip channel
CC25-30	656691	4227558	0.91	5	grab dump

For personal use only



# JORC Code, 2012 Edition – Table 1 – Phoenix Copper Project– Geochemical Sampling (March 2025)

## Section 1 Sampling Techniques and Data

(Criteria in this section apply to all succeeding sections.)

Criteria	JORC Code explanation	Commentary
Sampling techniques	<ul style="list-style-type: none"> <li>Nature and quality of sampling (eg cut channels, random chips, or specific specialised industry standard measurement tools appropriate to the minerals under investigation, such as down hole gamma sondes, or handheld XRF instruments, etc). These examples should not be taken as limiting the broad meaning of sampling.</li> <li>Include reference to measures taken to ensure sample representivity and the appropriate calibration of any measurement tools or systems used.</li> <li>Aspects of the determination of mineralisation that are Material to the Public Report.</li> <li>In cases where 'industry standard' work has been done this would be relatively simple (eg 'reverse circulation drilling was used to obtain 1 m samples from which 3 kg was pulverised to produce a 30 g charge for fire assay'). In other cases more explanation may be required, such as where there is coarse gold that has inherent sampling problems. Unusual commodities or mineralisation types (eg submarine nodules) may warrant disclosure of detailed information.</li> </ul>	<ul style="list-style-type: none"> <li>A total of 33 rock geochemical samples were collected.</li> <li>Rocks were collected as grab and chip channel samples from historically existing mining and exploration workings, as well as outcrop and float. This includes from sites such as mine dumps, prospect pits, dozer scrapes &amp; trenches, and adjacent mineralised outcrop or subcrop/float. Equipment used was predominately hand held hammer for the collection of rock fragments using a hand held GPS for locational data.</li> <li>All field exploration work was completed by Harrison Land Services LLC, a Utah based company.</li> </ul>
Drilling techniques	<ul style="list-style-type: none"> <li>Drill type (eg core, reverse circulation, open-hole hammer, rotary air blast, auger, Bangka, sonic, etc) and details (eg core diameter, triple or standard tube, depth of diamond tails, face-sampling bit or other type, whether core is oriented and if so, by what method, etc).</li> </ul>	<ul style="list-style-type: none"> <li>No drilling conducted.</li> </ul>
Drill sample recovery	<ul style="list-style-type: none"> <li>Method of recording and assessing core and chip sample recoveries and results assessed.</li> <li>Measures taken to maximise sample recovery and ensure representative nature of the samples.</li> <li>Whether a relationship exists between sample recovery and grade and whether sample bias may have occurred due to preferential loss/gain of fine/coarse material.</li> </ul>	<ul style="list-style-type: none"> <li>No drilling conducted.</li> </ul>
Logging	<ul style="list-style-type: none"> <li>Whether core and chip samples have been geologically and geotechnically logged to a level of detail to support appropriate Mineral Resource estimation, mining studies and metallurgical</li> </ul>	<ul style="list-style-type: none"> <li>No drilling conducted.</li> </ul>

Criteria	JORC Code explanation	Commentary
	<p>studies.</p> <ul style="list-style-type: none"> <li>• Whether logging is qualitative or quantitative in nature. Core (or costean, channel, etc) photography.</li> <li>• The total length and percentage of the relevant intersections logged.</li> </ul>	
Sub-sampling techniques and sample preparation	<ul style="list-style-type: none"> <li>• If core, whether cut or sawn and whether quarter, half or all core taken.</li> <li>• If non-core, whether riffled, tube sampled, rotary split, etc and whether sampled wet or dry.</li> <li>• For all sample types, the nature, quality and appropriateness of the sample preparation technique.</li> <li>• Quality control procedures adopted for all sub-sampling stages to maximise representivity of samples.</li> <li>• Measures taken to ensure that the sampling is representative of the in situ material collected, including for instance results for field duplicate/second-half sampling.</li> <li>• Whether sample sizes are appropriate to the grain size of the material being sampled.</li> </ul>	<ul style="list-style-type: none"> <li>• Rock samples were placed directly into labelled calico bags at the site location from which they were collected. No repeat or check samples have yet been submitted for analysis. Each sample was weighed at the preparation laboratory and the weights recorded along with the analytical results. No specific quality control procedure has been adopted for the collection of samples. Samples were shipped to ALS Global laboratories in Elko, Nevada for drying, pulverizing, and splitting to prepare a pulp of approximately 200g which was then shipped to ALS Global laboratories in Vancouver, Canada for analytical determinations. Sample weights were +1 kg</li> </ul>
Quality of assay data and laboratory tests	<ul style="list-style-type: none"> <li>• The nature, quality and appropriateness of the assaying and laboratory procedures used and whether the technique is considered partial or total.</li> <li>• For geophysical tools, spectrometers, handheld XRF instruments, etc, the parameters used in determining the analysis including instrument make and model, reading times, calibrations factors applied and their derivation, etc.</li> <li>• Nature of quality control procedures adopted (eg standards, blanks, duplicates, external laboratory checks) and whether acceptable levels of accuracy (ie lack of bias) and precision have been established.</li> </ul>	<ul style="list-style-type: none"> <li>• Rocks - Assays were prepared and performed by ALS Global – Geochemistry Analytical Labs in Elko, Nevada USA using a four acid digestion method with an ICP-MS finish for a suite of elements (Method ME_MS61a- AR-ICP-MS).</li> <li>• No company generated standards or blanks were incorporated into the sampling procedure. ALS undertook their own internal checks and blanks.</li> <li>• Only elements of exploration interest have been reported in text.</li> </ul>
Verification of sampling and assaying	<ul style="list-style-type: none"> <li>• The verification of significant intersections by either independent or alternative company personnel.</li> <li>• The use of twinned holes.</li> <li>• Documentation of primary data, data entry procedures, data verification, data storage (physical and electronic) protocols.</li> <li>• Discuss any adjustment to assay data.</li> </ul>	<ul style="list-style-type: none"> <li>• Results were checked and reviewed by the CEO and consultant and incorporated into a digital database.</li> </ul>
Location of data points	<ul style="list-style-type: none"> <li>• Accuracy and quality of surveys used to locate drill holes (collar and down-hole surveys), trenches, mine workings and other locations used in Mineral Resource estimation.</li> <li>• Specification of the grid system used.</li> <li>• Quality and adequacy of topographic control.</li> </ul>	<ul style="list-style-type: none"> <li>• Location of samples were recorded by hand held GPS. The GPS recorded locations using the NAD83 datum UTM Zone 12. Accuracy is limited to approximately 3 meters.</li> </ul>

Criteria	JORC Code explanation	Commentary
<i>Data spacing and distribution</i>	<ul style="list-style-type: none"> <li>• <i>Data spacing for reporting of Exploration Results.</i></li> <li>• <i>Whether the data spacing and distribution is sufficient to establish the degree of geological and grade continuity appropriate for the Mineral Resource and Ore Reserve estimation procedure(s) and classifications applied.</i></li> <li>• <i>Whether sample compositing has been applied.</i></li> </ul>	<ul style="list-style-type: none"> <li>• Rock samples were collected randomly at previously known mining and prospect sites, at outcrop sites and grab samples (see text). The data is primarily an initial exploration reconnaissance sampling program. Samples locations are variable and based on field observations.</li> </ul>
<i>Orientation of data in relation to geological structure</i>	<ul style="list-style-type: none"> <li>• <i>Whether the orientation of sampling achieves unbiased sampling of possible structures and the extent to which this is known, considering the deposit type.</i></li> <li>• <i>If the relationship between the drilling orientation and the orientation of key mineralised structures is considered to have introduced a sampling bias, this should be assessed and reported if material.</i></li> </ul>	<ul style="list-style-type: none"> <li>• The data is primarily an initial exploration reconnaissance sampling program and is useful for identifying broad geological trends.</li> </ul>
<i>Sample security</i>	<ul style="list-style-type: none"> <li>• <i>The measures taken to ensure sample security.</i></li> </ul>	<ul style="list-style-type: none"> <li>• Contractor personnel collected the samples which were securely tied in polyweave sacks and transported to the assay laboratory in Elko, Nevada</li> </ul>
<i>Audits or reviews</i>	<ul style="list-style-type: none"> <li>• <i>The results of any audits or reviews of sampling techniques and data.</i></li> </ul>	<ul style="list-style-type: none"> <li>• No external audit has been completed.</li> </ul>

## Section 2 Reporting of Exploration Results

(Criteria listed in the preceding section also apply to this section.)

Criteria	JORC Code explanation	Commentary
<i>Mineral tenement and land tenure status</i>	<ul style="list-style-type: none"> <li>• <i>Type, reference name/number, location and ownership including agreements or material issues with third parties such as joint ventures, partnerships, overriding royalties, native title interests, historical sites, wilderness or national park and environmental settings.</i></li> <li>• <i>The security of the tenure held at the time of reporting along with any known impediments to obtaining a licence to operate in the area.</i></li> </ul>	<p>The Phoenix Copper Project is located in SW USA in the states of Utah and Colorado. The Project consists of 292 Mining Rights (lode claims) on US Bureau of Land Management (BLM) administered land covering approximately 23.6km<sup>2</sup></p> <p>Diablo owns the project 100%. The project is proximal to existing mining operations.</p> <p>The Claims are in good standing. There are no known impediments to operating in the area.</p>
<i>Exploration done by other parties</i>	<ul style="list-style-type: none"> <li>• <i>Acknowledgment and appraisal of exploration by other parties.</i></li> </ul>	<ul style="list-style-type: none"> <li>• Evidence of some historical mining and exploration activity is evident within the project areas. Limited modern day exploration techniques and methods appear to have been conducted.</li> <li>• At Stateline, previous explorers report rock sampling with anomalous copper results, although locations are not provided. Public domain data shows that drilling by the operators of the nearby mine up to the boundary at Stateline, although no geological data is available for this drilling. No evidence of drilling within the Stateline Project has been observed.</li> </ul>
<i>Geology</i>	<ul style="list-style-type: none"> <li>• <i>Deposit type, geological setting and style of mineralisation.</i></li> </ul>	<ul style="list-style-type: none"> <li>• The project area lies within a structurally controlled Paleozoic Paradox Basin, a disrupted and folded package of clastic sediments evaporites and carbonates. Deformation and Folding has produced anticlinal folds and structures that have allowed mineralizing fluid to migrate from depth and precipitate along favorable geological horizons. The project is prospective for sandstone-hosted copper deposits similar to that observable at nearby mining operations.</li> </ul>
<i>Drill hole Information</i>	<ul style="list-style-type: none"> <li>• <i>A summary of all information material to the understanding of the exploration results including a tabulation of the following information for all Material drill holes:</i> <ul style="list-style-type: none"> <li>○ <i>easting and northing of the drill hole collar</i></li> <li>○ <i>elevation or RL (Reduced Level – elevation above sea level in metres) of the drill hole collar</i></li> <li>○ <i>dip and azimuth of the hole</i></li> </ul> </li> </ul>	<ul style="list-style-type: none"> <li>• No drilling conducted.</li> </ul>

Criteria	JORC Code explanation	Commentary
	<ul style="list-style-type: none"> <li>○ down hole length and interception depth</li> <li>○ hole length.</li> <li>● If the exclusion of this information is justified on the basis that the information is not Material and this exclusion does not detract from the understanding of the report, the Competent Person should clearly explain why this is the case.</li> </ul>	
Data aggregation methods	<ul style="list-style-type: none"> <li>● In reporting Exploration Results, weighting averaging techniques, maximum and/or minimum grade truncations (eg cutting of high grades) and cut-off grades are usually Material and should be stated.</li> <li>● Where aggregate intercepts incorporate short lengths of high grade results and longer lengths of low grade results, the procedure used for such aggregation should be stated and some typical examples of such aggregations should be shown in detail.</li> <li>● The assumptions used for any reporting of metal equivalent values should be clearly stated.</li> </ul>	<ul style="list-style-type: none"> <li>● N.A</li> </ul>
Relationship between mineralisation widths and intercept lengths	<ul style="list-style-type: none"> <li>● These relationships are particularly important in the reporting of Exploration Results.</li> <li>● If the geometry of the mineralisation with respect to the drill hole angle is known, its nature should be reported.</li> <li>● If it is not known and only the down hole lengths are reported, there should be a clear statement to this effect (eg 'down hole length, true width not known').</li> </ul>	<ul style="list-style-type: none"> <li>● No drilling completed.</li> </ul>
Diagrams	<ul style="list-style-type: none"> <li>● Appropriate maps and sections (with scales) and tabulations of intercepts should be included for any significant discovery being reported These should include, but not be limited to a plan view of drill hole collar locations and appropriate sectional views.</li> </ul>	<ul style="list-style-type: none"> <li>● See text</li> </ul>
Balanced reporting	<ul style="list-style-type: none"> <li>● Where comprehensive reporting of all Exploration Results is not practicable, representative reporting of both low and high grades and/or widths should be practiced to avoid misleading reporting of Exploration Results.</li> </ul>	<ul style="list-style-type: none"> <li>● Results have been reported for the main elements targeted as recorded. Interpretation of other elements is ongoing.</li> </ul>
Other substantive exploration data	<ul style="list-style-type: none"> <li>● Other exploration data, if meaningful and material, should be reported including (but not limited to): geological observations; geophysical survey results; geochemical survey results; bulk samples – size and method of treatment; metallurgical test results; bulk density, groundwater, geotechnical and rock characteristics; potential deleterious or contaminating substances.</li> </ul>	<ul style="list-style-type: none"> <li>● See text</li> </ul>
Further work	<ul style="list-style-type: none"> <li>● The nature and scale of planned further work (eg tests for lateral extensions or depth extensions or large-scale step-out drilling).</li> </ul>	<ul style="list-style-type: none"> <li>● See Text</li> </ul>

Criteria	JORC Code explanation	Commentary
	<ul style="list-style-type: none"><li>• <i>Diagrams clearly highlighting the areas of possible extensions, including the main geological interpretations and future drilling areas, provided this information is not commercially sensitive.</i></li></ul>	