



"Venus Metals Corporation holds a significant and wide-ranging portfolio of Australian gold, copper, base metals, lithium, titanium, vanadium exploration projects in Western Australia, in addition to owning a 1% Royalty over the Youanmi Gold Mine and being a substantial shareholder of Rox Resources Limited."

VENUS METALS CORPORATION LIMITED

Unit 2/8 Alvan St
Subiaco, WA 6008
+61 8 9321 7541
info@venusmetals.com.au
www.venusmetals.com.au
ABN: 99 123 250 582

DIRECTORS

Peter Charles Hawkins
Non-Executive Chairman

Matthew Vernon Hogan
Managing Director

Kumar Arunachalam
Executive Director

Simon Coxhell
Non-Executive Director

COMPANY SECRETARY

Patrick Tan

Ordinary shares on Issue	196m
Share Price	\$0.11
Market Cap.	\$21.5m
Cash & Liquid Investments	\$19.6m

ASX ANNOUNCEMENT

25 March 2025



ASX CODE: VMC

ADDENDUM TO SANDSTONE GOLD PROJECT BELLCHAMBERS EXPLORATION UPDATE

Venus Metals (ASX: VMC) ("Venus" or the "Company") refers to the announcement made on 24 March 2025 titled "Sandstone Gold Project Bellchambers Exploration Update". The Company advises that the attached updated announcement contains further commentary in the announcement and in JORC Table 1, Section 1, Logging, Sub-sample Techniques and sample preparation and Criteria: Quality of assay data and laboratory tests.

In addition the location of BCRC 106 and BCRC107 have been clarified and a new Appendix Two has been included to illustrate the location of the drillholes and the flow sheet for the bottle roll analytical work completed.

This announcement has been authorised for release by the Board of Venus Metals Corporation.



"Venus Metals Corporation holds a significant and wide-ranging portfolio of Australian gold, copper, base metals, lithium, titanium, vanadium exploration projects in Western Australia, in addition to owning a 1% Royalty over the Youanmi Gold Mine and being a substantial shareholder of Rox Resources Limited."

VENUS METALS CORPORATION LIMITED

Unit 2/8 Alvan St
Subiaco, WA 6008
+61 8 9321 7541
info@venusmetals.com.au
www.venusmetals.com.au
ABN: 99 123 250 582

DIRECTORS

Peter Charles Hawkins
Non-Executive Chairman

Matthew Vernon Hogan
Managing Director

Kumar Arunachalam
Executive Director

Simon Coxhell
Non-Executive Director

COMPANY SECRETARY

Patrick Tan

Ordinary shares on Issue	196m
Share Price	\$0.11
Market Cap.	\$21.5m
Cash & Liquid Investments	\$19.6m

25 March 2025



SANDSTONE GOLD PROJECT

BELLCHAMBERS EXPLORATION UPDATE

Venus Metals Corporation Limited ("Venus" or the "Company") is pleased to advise that the Company has completed field work involving mapping, rock chip sampling and preparation for an upcoming reverse circulation (RC) drilling programme and bottle-roll analysis.

The Bellchambers gold deposit, owned 90% by Venus comprises a gold deposit totalling 722,000 t @ 1.31 g/t Au (30,500 ounces) (refer ASX release 4 April 2023), located within E57/984, approximately 70 kilometres northeast of the Youanmi Gold Project, being progressed by Rox Resources.

Highlights:

- Encouraging initial results from **bottle-roll analysis** of composite samples from previous VMC drilling. **Results ranged from 86.3 to 92.0% recovery for the oxide samples, 81.9 to 95.6% for the transition and 75 to 90.1% for the fresh samples**, (refer Table 2b and Appendix 2).
- Collection of 51 rock chip samples, mapping of the potential strike extensions of Bellchambers. The rock chip sampling returned 5 samples above 0.5 g/t Au with a maximum value of 2.19 g/t Au and highlighted several areas considered prospective for the identification of additional gold mineralisation.
- Anomalous gold mineralisation identified 1.5 kilometres northeast of the Bellchambers deposit and south – south east of Bellchambers previously described as Georgina-Rainbow trend highlighting the additional potential in this area. Additional work will be focused on understanding the controls on the gold mineralisation and further mapping to identify new target areas.
- A total of 14-16 reverse circulation holes in and around the Bellchambers deposit is planned to convert inferred and indicated mineralisation to a higher category an additional 26 exploration holes within the tenement area are planned to test for additional gold mineralisation outside of the existing gold resource. The RC drill program of approximately 2000 metres planned for late April is expected to take 2 weeks to complete with assays results due in the following month.



Project Background

The Sandstone Gold Project lies within tenement E57/984 (125 km²; 90% VMC). The Bellchambers mining area, , is located about 23 km southwest of the town of Sandstone (Figure 1) and is 70km by road northeast from the Youanmi Gold Project being developed by Rox Resources Ltd. Historical reported gold production from Bellchambers is 3,688 ounces of gold from 5,620 tonnes of ore at an average grade of 21 g/t gold.

Gold mineralisation at Bellchambers deposit and the adjacent Range View prospect (Refer ASX release 26 March 2021), is hosted within a northeasterly trending and steeply dipping sequence of sheared sulphide-rich sediments and mafic rocks, interlayered with thin chert and Banded Iron Formation (BIF).

The total Indicated and Inferred Resource for Bellchambers is reported at 0.5 gm/t Au and 1.0 gm/t Au cutoffs and is summarised below. (refer ASX:VMC announcement dated 4th April 2023)

Table 1-1 Bellchambers Project Resource Summary 0.5 gm/t Au Cutoff

Bellchambers Resource Estimate March 2023						
Class	Cutoff	Volume	Tonnes	Density	Au	Ounces
Indicated	0.5	192,000	526,000	2.73	1.31	22,100
Inferred	0.5	69,000	197,000	2.83	1.33	8,400
Total	0.5	262,000	722,000	2.76	1.31	30,500

Table 1-2 Bellchambers Project Resource Summary 1.0 gm/t Au Cutoff

Bellchambers Resource Estimate March 2023						
Class	Cutoff	Volume	Tonnes	Density	Au	Ounces
Indicated	1.0	112,000	307,000	2.73	1.71	16,900
Inferred	1.0	30,000	86,000	2.86	2.08	5,800
Total	1.0	142,000	393,000	2.76	1.79	22,600

An advanced gold prospect named Range View is located approximately 1.1 kilometres northeast and along strike of Bellchambers within a new mining lease application (refer ASX announcement 16 December 2024) with previous VMC drill results including:

- BCRC120 **11m @ 4.69 g/t Au** from 12m Including **1m @ 38.92 g/t Au** from 20m
 - BCRC122 **8m @ 1.22 g/t Au** from 30m Including **1m @ 4.48 g/t Au** from 30m
- (refer ASX release 19 June 2019)

This is an obvious exploration area along strike from Bellchambers, with clear potential to outline additional gold mineralisation within the mining lease application. A mine gate sale agreement between Venus and Rox Resources Ltd provides a potential treatment option for the Bellchambers deposit.



The samples for the bottle rolls were composited from Venus drill holes BCRC106 and BRRC107 which were drilled in 2019 (Table 2a) to test mineralisation at the Bellchambers gold deposit. (See ASX release 19 June 2019). The samples were retrieved from storage and the samples were compiled into 3 mineralised zones based on visual geology and categorised as Oxide, Transition and Fresh and submitted for analysis. Approximately 5 kilograms of each sample type was compiled.

Results ranged from 86. to 92.0% recovery for the oxide samples, 81.9 to 95.6% for the transition and 75 to 90.1% for the fresh samples (Table 2b).

Appendix Two provides location plans and sections of BCRC106 and BCRC107.

Table 2a. RC Drill hole Collar details

Hole ID	MGA_East_50	MGA_North_50	RL	Depth_m	DIP	AZI
BCRC107	710094.2	6882918.6	524.26	84	-75	135
BCRC106	710105.0	6882925.7	525.27	72	-69	135

Table 2b. Bottle Roll Results

Bellchambers Bottle Rolls		Mean Grade	Cyanide Soluble Au	Suggested Recovery
Sample	Material Type	(ppm) g/t Au	(ppm) g/t Au	
106A	OXIDE	3.22	2.78	86.30%
106B	TRANSITION	1.8	1.48	81.90%
106C	FRESH	1.54	1.15	75.00%
107A	OXIDE	1.58	1.45	92.00%
107B	TRANSITION	0.9	0.86	95.60%
107C	FRESH	2.9	2.61	90.10%

A large sample from the upcoming drill program will be collected and compiled for a comprehensive metallurgical test program to accurately understand likely recoveries of Bellchambers.



For personal use only

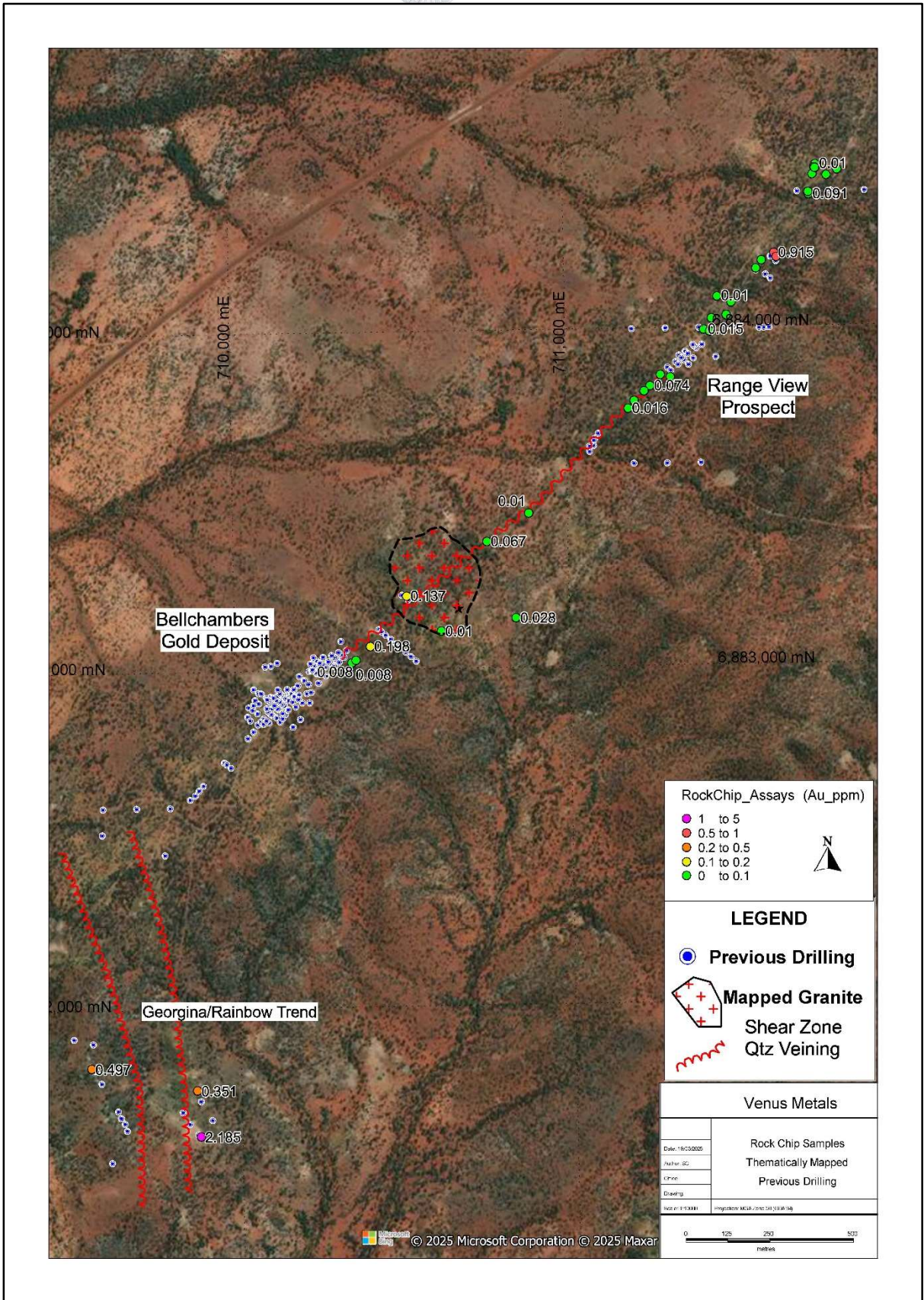


Figure 1: Rockchip Gold Results on Aerial Imagery

VENUS METALS CORPORATION

MORE INFORMATION: info@venusmetals.com.au | www.venusmetals.com.au

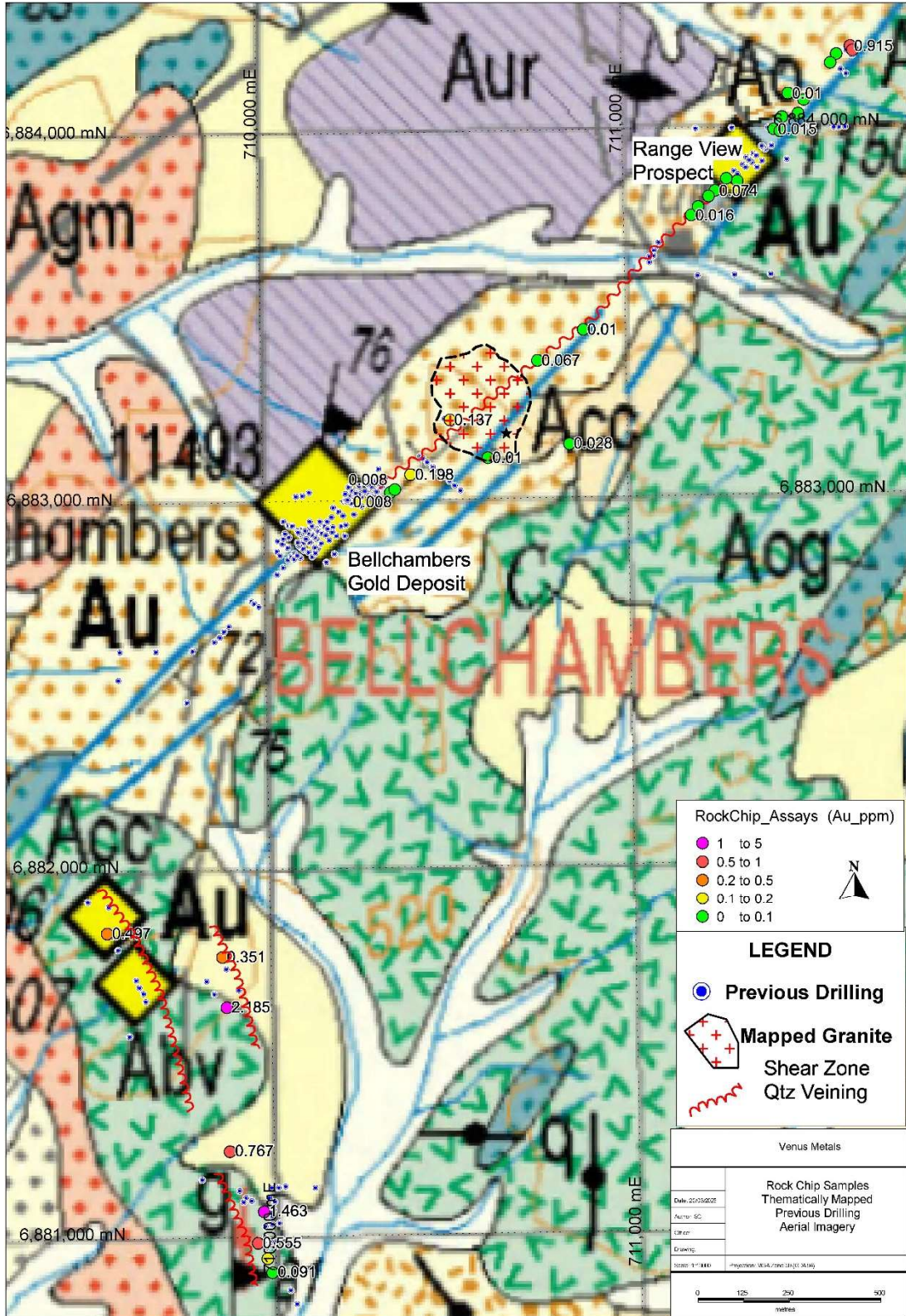


Figure 2: Rockchip Gold Results on GSWA 100K Geology

VENUS METALS CORPORATION

MORE INFORMATION: info@venusmetals.com.au | www.venusmetals.com.au

For personal use only

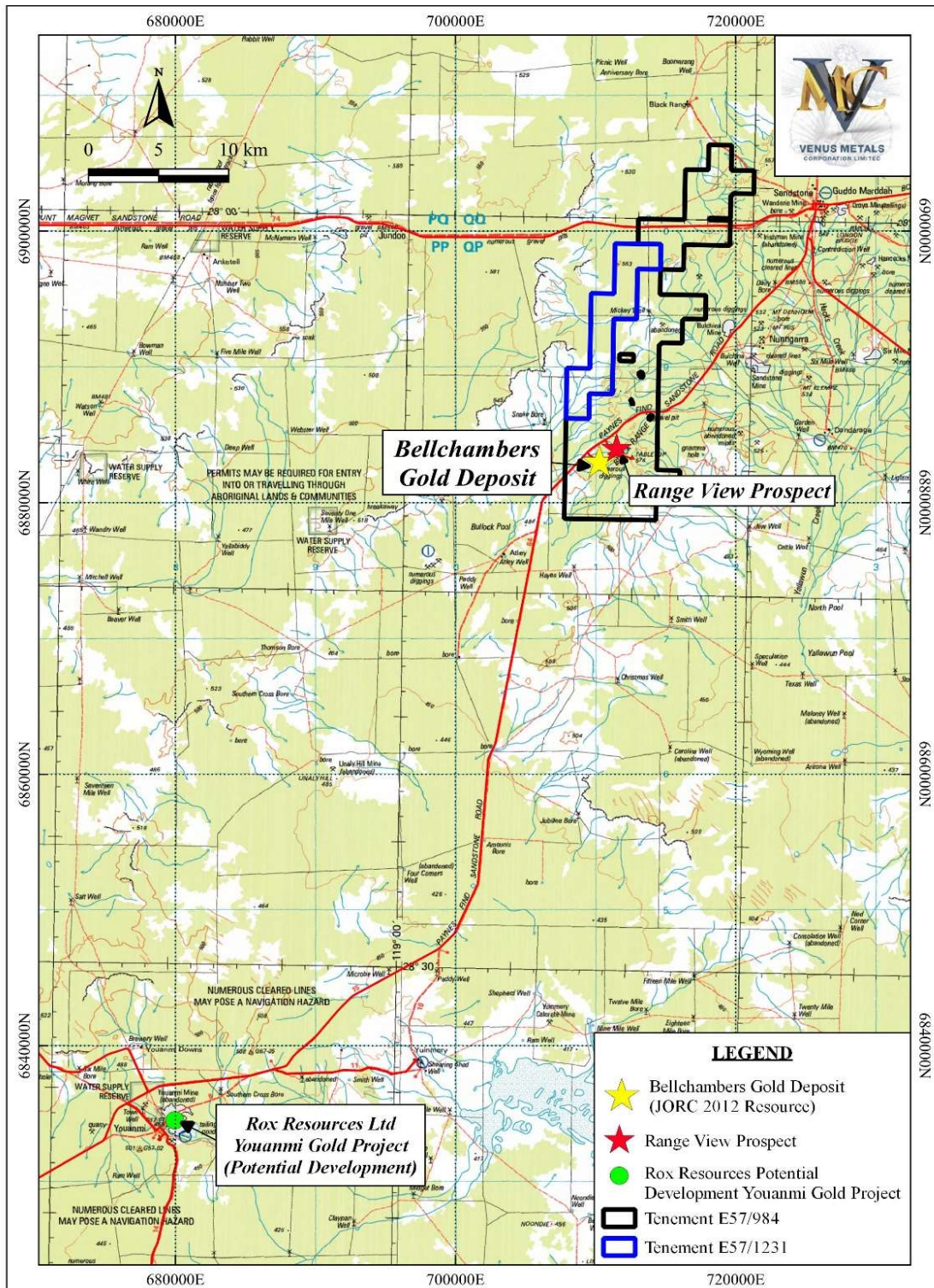


Figure 3. Regional Location Plan

For personal use only



For personal use only

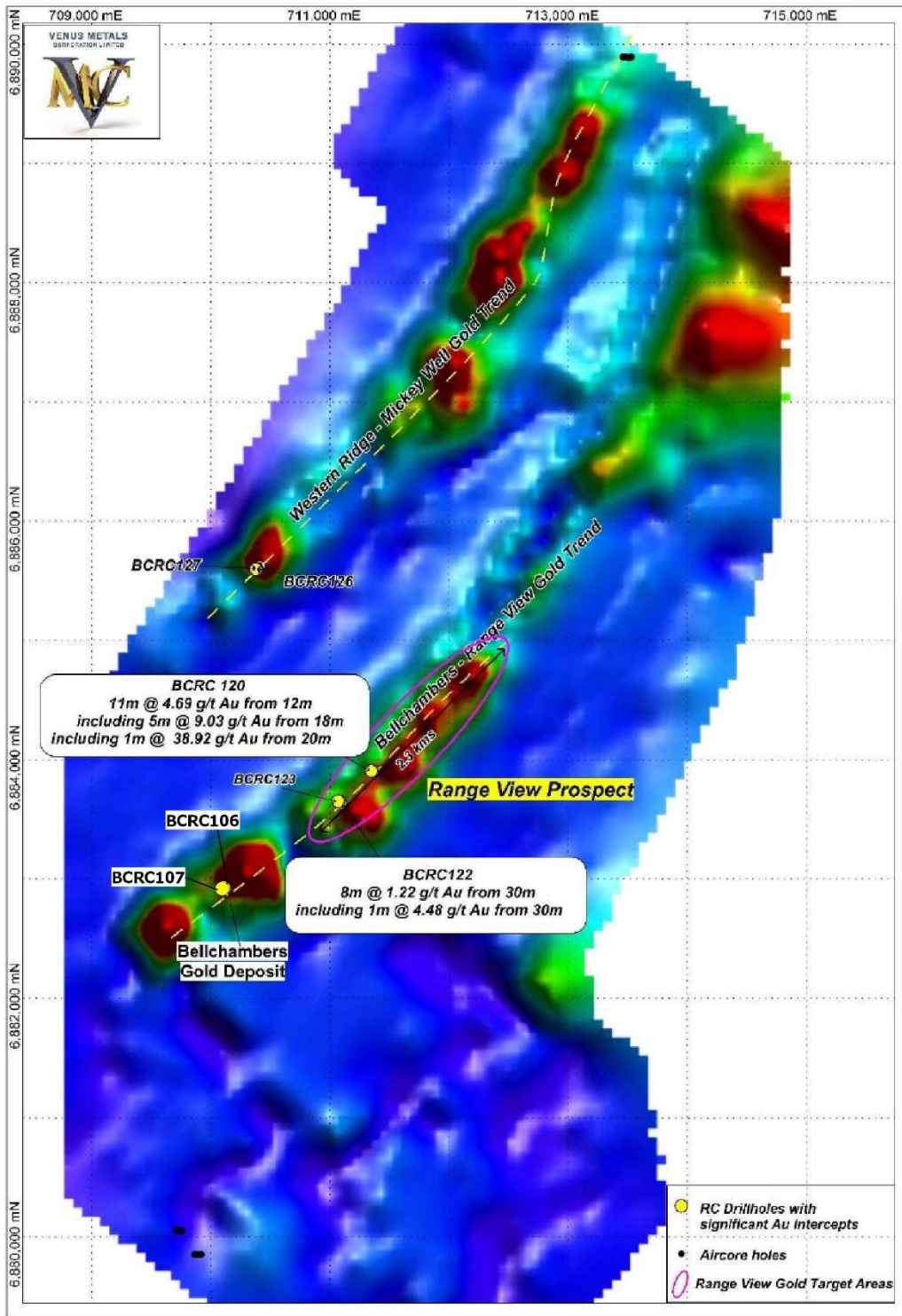


Figure 4. Drillholes with significant Au intercepts shown on VTEM Anomaly Map.



APPENDIX ONE: Rockchip Sampling Results

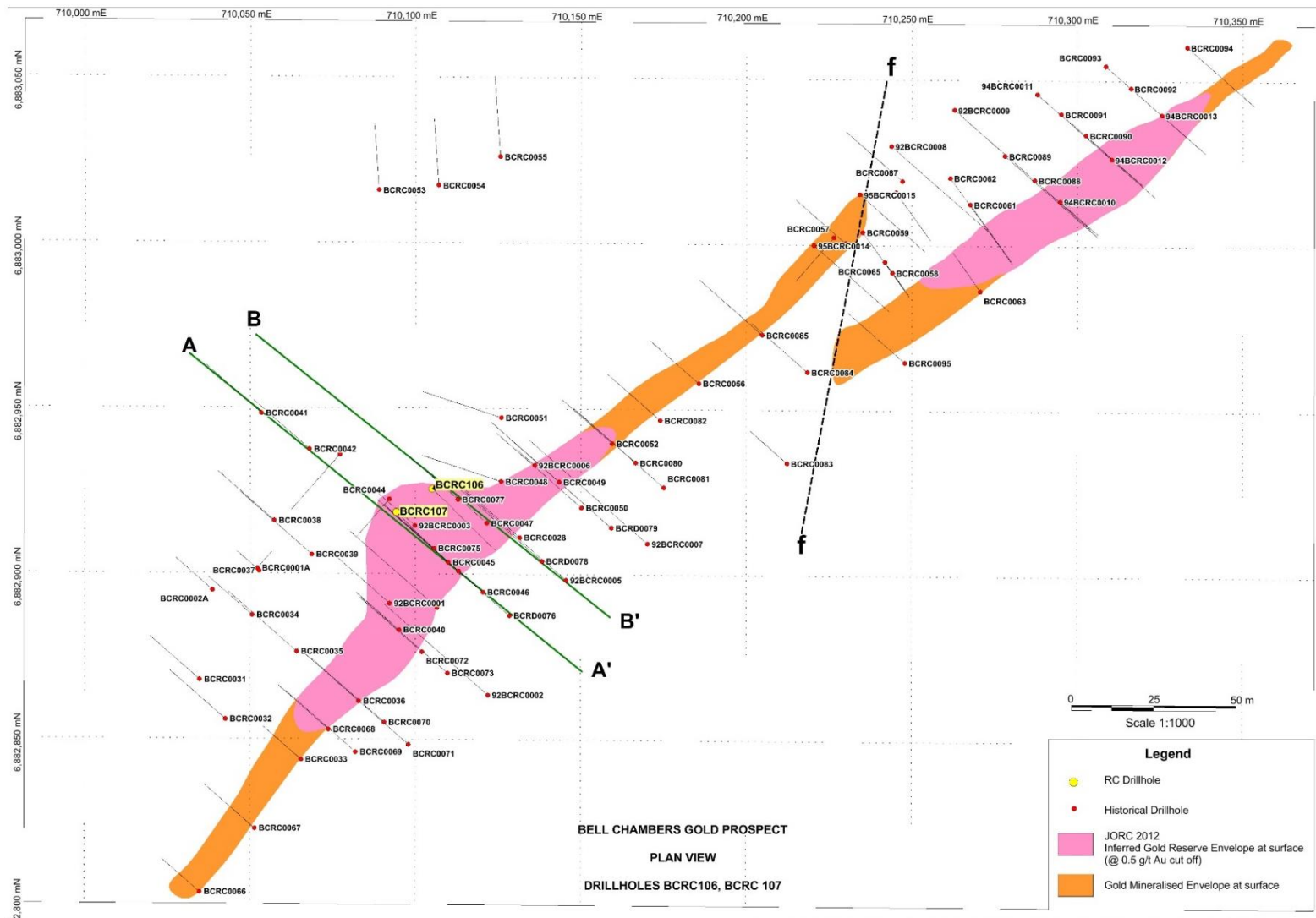
Sample	East	North	Description	Au(ppm)
VM01	711415	6883995	Brecc Qtz/Fe (2-3m) O30/80E	0.02
VM02	711415	6883995	Brecc Qtz/Fe (2-3m) O30/80E	0.01
VM03	711438	6884027	Brecc Qtz/Fe (1-2m) O30/80E	0.04
VM04	711438	6884027	Brecc Qtz/Fe (1-3m) O30/80E	0.05
VM05	711456	6884092	Crenulated Shear 60Qtz/40Fe	0.01
VM06	711456	6884092	Crenulated Shear 60Qtz/40Fe	0.01
VM07	711498	6884073	Crenulated Shear Qtz/Fe/BxWk Texture	0.04
VM08	711498	6884073	Crenulated Shear Qtz/Fe/BxWk Texture	0.02
VM09	711482	6884036	Hungry Qtz, Minor Fe, Strong O30 Fabric	0.01
VM10	711482	6884036	Hungry Qtz, Minor Fe, Strong O30 Fabric	0.02
VM11	711432	6883989	3 m Wide, Qtz/Minor Fe/ SSt/Sh	0.01
VM12	711432	6883989	3 m Wide, Qtz/Minor Fe/ SSt/Sh	0.01
VM13	711628	6884218	Fe Rich Sheared GreyW/Shales	0.92
VM14	711634	6884206	Fe Rich Sheared GreyW/Shales	0.83
VM15	711590	6884197	Brecciated Qtz/Fe Zone 2 m wide	0.07
VM16	711573	6884173	Old Shaft/Qtz float	0.09
VM17	711573	6884173	Old Shaft/Qtz float	0.07
VM18	711185	6883764	Sheared Ferrig Sed, Minor Qtz	0.02
VM19	711204	6883787	Sheared Ferrig Sed, Minor Qtz	0.06
VM20	711252	6883830	Sheared Ferrig Sed, Minor Qtz	0.07
VM21	711234	6883815	Sheared Ferrig Sed, Minor Qtz	0.01
VM22	711313	6883855	Fe Sed, HW to "main" zone	0.06
VM23	711283	6883862	Minor Brecc Qtz vein/Fe staining	0.04
VM24	710757	6883376	Grey Qtz in Greywacke on road	0.07
VM25	710841	6883148	Minor Qtz in mafic rocks	0.03
VM26	710515	6883218	Old Shaft qtz in yellow Ago?	0.14
VM27	710617	6883113	Lat Fe, suspect Granite	0.01
VM28	710405	6883071	Fe Rich O25 strong Foliation, margins	0.20
VM29	710349	6883023	Crenulated BIF/Sed/greywacke	0.01
VM30	710361	6883031	Crenulated BIF/Sed/greywacke	0.01
VM31	709990	6880905	Qtz vein/gran/mafic contact old workings	0.09
VM32	709977	6880943	1.5 m Qtz vein 335/80E, Mafic host	0.15
VM33	709951	6880985	20 m long workings, Qtz 1m, Mafic, 2 old drillholes	0.56
VM34	709969	6881071	Old workings, 1 m qtz vein 010/80E	1.46
VM35	709879	6881236	Old workings, 1 m qtz vein 340/80E	0.77
VM36	709876	6881627	Old workings Qtz veining	2.19
VM37	709867	6881763	Old workings Qtz veining	0.35
VM38	709553	6881832	330/80E,, Qtz vein/ narrow Alt selvedge	0.50
VM39	712422	6885478	Minor Brecc Qtz vein/sheared sed	0.01
VM40	712528	6885468	Milky Qtz/BIF/Cherts O30/80E/Seds	0.01
VM41	712611	6885447	Convolute BIF +/- Qtz	0.01
VM42	712500	6885522	Irregular grey/milky Qtz	0.01
VM43	711755	6884479	Fe/Qtz vein in Fe seds	0.01
VM44	711752	6884470	Fe/Qtz vein in Fe seds/More qtz	0.01
VM45	711754	6884468	Fe rich Sheared Sed O40/80E	0.06
VM46	711788	6884446	Grey/White milky qtz	0.01
VM47	711733	6884390	BIF/seds, Qtz, minor Bxwk textures	0.09
VM48	711733	6884397	Irregular Milky Qtz vein	0.02
VM49	711746	6884450	Milky Qtz/Brecc/Fe Seds	0.01
VM50	711820	6884462	Fe/Qtz, minor bxwk	0.01
VM51	710884	6883458	Fe Seds,sheared, O30/80, Mafics to the west	0.01



For personal use only

Appendix Two

Plans and Sections of Location of Bottle Roll Samples and Test work flow Sheet.



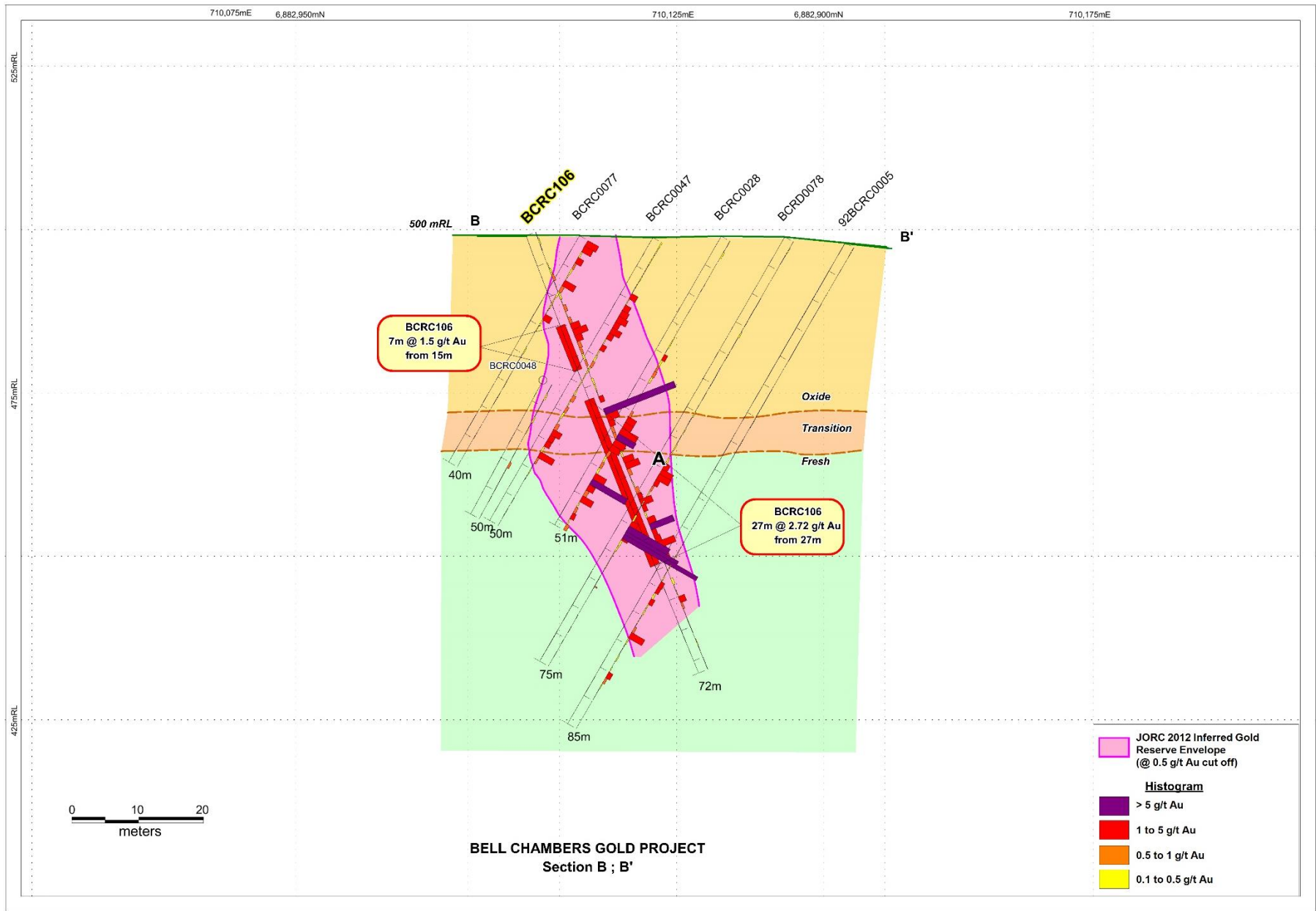
Plan view of the Bellchambers Prospect showing drilled holes BCRC107 and BCRC106.

Please refer to ASX release 19 June 2019 for more information.

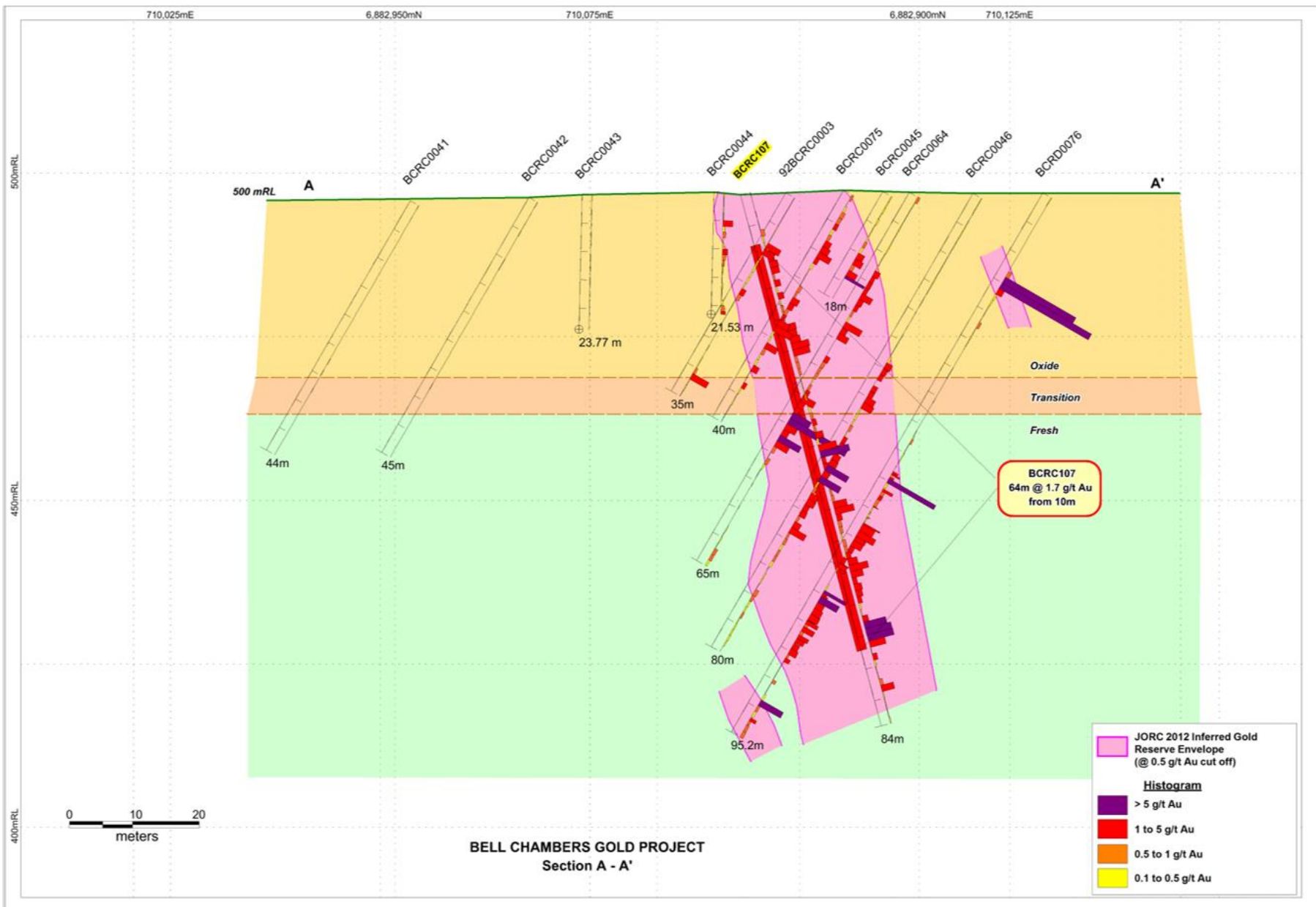
personal use only



For personal use only



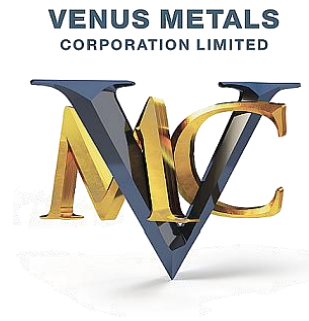
Cross Section along B-B' showing recently drilled hole BCRC106.



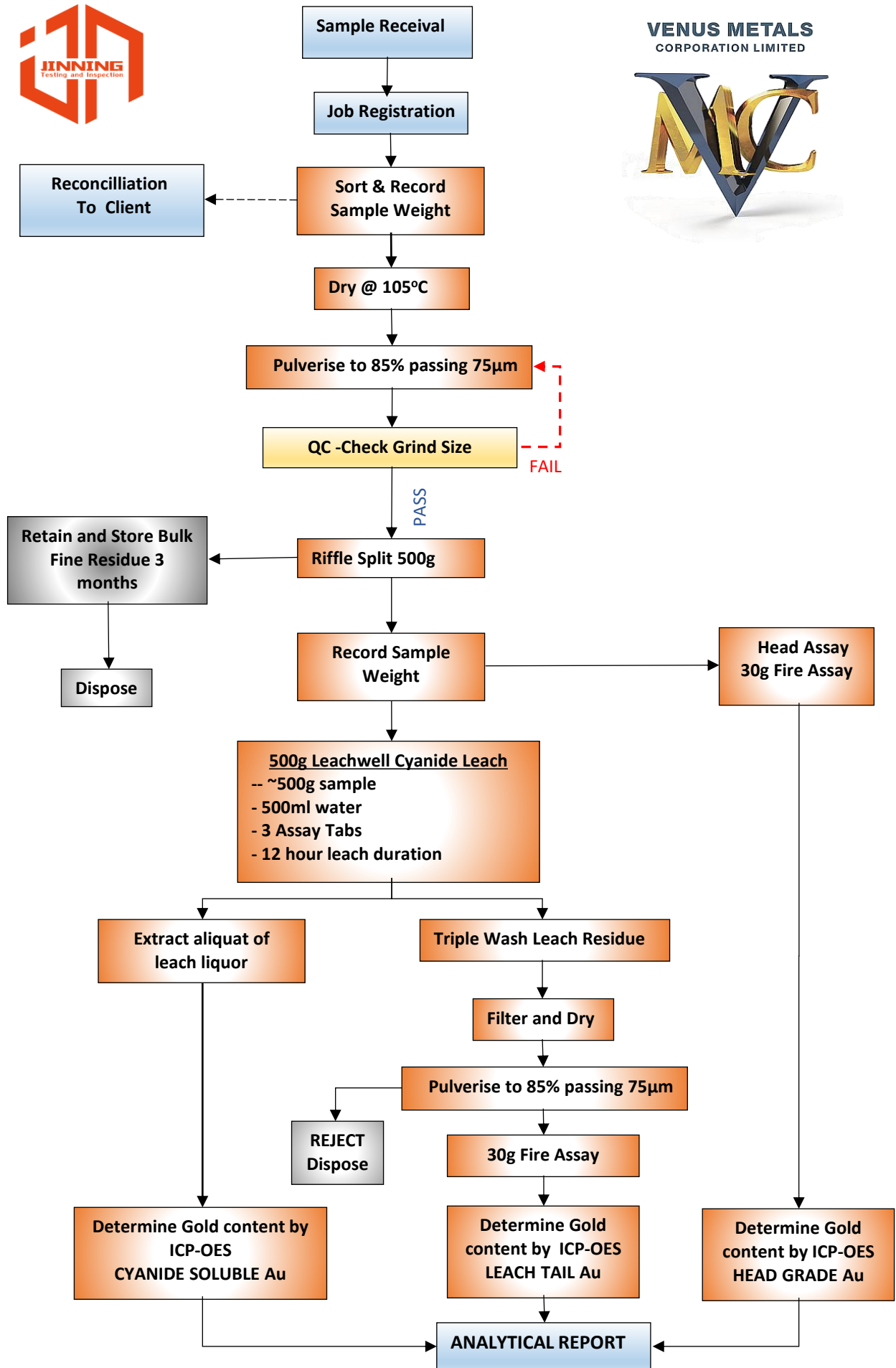
Cross Section along A-A' showing recently drilled hole BCRC107.

Please refer to ASX release 19 June 2019 for more information.

VENUS METALS - LEACHWELL FLOWSHEET



For personal use only





This announcement is authorised by the Board of Venus Metals Corporation Limited.

For further information please contact:

Venus Metals Corporation Limited

Matthew Hogan

Managing Director

Ph +61 8 9321 7541

info@venusmetals.com.au

Competent Person's Statement

Mineral resources Information on historical exploration results and Mineral Resources for the Bellchambers Gold Project presented in this announcement, together with applicable JORC Tables is contained in ASX announcements released on 4th April 2023 and 15th January 2021.

Information on historical exploration results and Mineral Resources for Bellchambers presented in this announcement is contained in an ASX announcement released on 4th April 2023. The Company confirms that it is not aware of any new information or data that materially affects the information in the relevant market announcements, and that the form and context in which the Competent Persons findings are presented have not been materially modified from the original announcements.

The information in this report that relates to Exploration Results is based on, and fairly represents, information and supporting documentation compiled by Mr. Simon Coxhell,(CoxsRocks Pty Ltd), Non-Executive Director of Venus Metals Corporation Ltd, and a Member of the Australian Institute of Mining and Metallurgy. Mr. Coxhell has sufficient experience that is relevant to the style of mineralisation and type of deposit under consideration and to the activity that he is undertaking to qualify as a Competent Person as defined in the 2012 Edition of the Joint Ore Reserves Committee (JORC) Australasian Code for Reporting of Exploration Results, Mineral Resources and Ore Reserves. Mr Coxhell consents to the inclusion in the report of the matters based on his information in the form and context in which it appears.

Forward-Looking Statements

This document may include forward-looking statements. Forward-looking statements include, but are not limited to, statements concerning Venus Metals Corporation Limited planned exploration program and other statements that are not historical facts. When used in this document, the words such as "could," "plan," "estimate," "expect," "intend," "may", "potential," "should," and similar expressions are forward-looking statements. Although Venus Metals Corporation Ltd believes that its expectations reflected in these forward-looking statements are reasonable, such statements involve risks and uncertainties and no assurance can be given that actual results will be consistent with these forward-looking statements.

For personal use only



Appendix-1

JORC Code, 2012 Edition – Table 1

Sandstone Bellchambers Gold Project

Section 1 Sampling Techniques and Data

Criteria	Commentary																					
<i>Sampling techniques</i>	<ul style="list-style-type: none"> A total of 51 rock-chip samples were collected on Venus' tenement E 57/984 (Sandstone Gold Project). Sampling was undertaken using standard industry practices. The rockchip sampling program was reconnaissance in nature, rockchips were taken at the discretion of a geologist according to visual inspection of suitably mineralised and/or unmineralised rock units. The samples for the bottle rolls were composited from Venus drill holes BCRC106 and BRRC107 which were drilled in 2019 to test mineralisation at the Bellchambers gold deposit. (See ASX release 19 June 2019). 																					
<i>Drilling techniques</i>	<ul style="list-style-type: none"> Not applicable - no drilling reported. 																					
<i>Drill sample recovery</i>	<ul style="list-style-type: none"> Not applicable - no drilling reported. 																					
<i>Logging</i>	<ul style="list-style-type: none"> Rock chip samples were logged recording geology/lithology, structure and alteration. Logging of rock chips colour and lithology was carried out on a routine basis. Data is in a digital form. A photograph has been collected for each rockchip sample. See Appendix One. 																					
<i>Sub-sampling techniques and sample preparation</i>	<p>Rock Chips:</p> <ul style="list-style-type: none"> Approximately 2 kilograms of rock chips were collected across the outcrop area of interest. The aim was to collect representative samples of the outcrop being sampled, using a hammer to systematically sample all material. This is considered sufficient for the grain size of the material being analysed and the reconnaissance stage of exploration being conducted. <p>Bottle Rolls:</p> <ul style="list-style-type: none"> The samples for the bottle rolls were composited from Venus drill holes BCRC106 and BRRC107 which were drilled in 2019 to test mineralisation at the Bellchambers gold deposit. (See ASX release 19 June 2019). The samples were retrieved from storage and composited based on visual geology into Oxide, Transitional and Fresh samples. Approximately 5 kilograms of each sample type was collected and submitted to Jinnang Laboratory (Perth) for the bottle roll tests. Holes BCRC 106 and BCRC 107 were drilled in the central portion of the Bellchambers deposit in 2019 to confirm the gold resource envelope. RC Drill hole Collar details <table border="1"> <thead> <tr> <th>Hole ID</th> <th>MGA_East_50</th> <th>MGA_North_50</th> <th>RL</th> <th>Depth_m</th> <th>DIP</th> <th>AZI</th> </tr> </thead> <tbody> <tr> <td>BCRC107</td> <td>710094.2</td> <td>6882918.6</td> <td>524.26</td> <td>84</td> <td>-75</td> <td>135</td> </tr> <tr> <td>BCRC106</td> <td>710105.0</td> <td>6882925.7</td> <td>525.27</td> <td>72</td> <td>-69</td> <td>135</td> </tr> </tbody> </table>	Hole ID	MGA_East_50	MGA_North_50	RL	Depth_m	DIP	AZI	BCRC107	710094.2	6882918.6	524.26	84	-75	135	BCRC106	710105.0	6882925.7	525.27	72	-69	135
Hole ID	MGA_East_50	MGA_North_50	RL	Depth_m	DIP	AZI																
BCRC107	710094.2	6882918.6	524.26	84	-75	135																
BCRC106	710105.0	6882925.7	525.27	72	-69	135																
<i>Quality of assay data and laboratory tests</i>	<ul style="list-style-type: none"> Rock Chips: All samples were submitted to Jinning Laboratories (Perth) and were analysed for 62 elements using mixed acid digest with ICPMS-ICPOES finish, and for Au,Pt,Pd using 30gm Fire Assay Digest/ICPOES (FA30I). 																					



Criteria	Commentary
	<ul style="list-style-type: none"> • Bottle Rolls: A nominal charge sample of 50g/30g is fired and cupelled as per the classical lead collection fire assay process. The noble metal prill is parted with nitric acid, dissolved in aqua regia and diluted for analysis. Analyses are performed via ICP-OES. • LWL500 A 500g charge is leached using LeachWELL tablets under manufacturers specified leach conditions. The resultant leach liquor is analysed for gold to provide cyanide soluble gold content. The solids are pulverised and assayed by fire assay to provide gold content of the leach tails. Au Total (Calc) Total gold content of the sample is calculated as the sum of the cyanide soluble gold and the gold content retained in the leach tail • Quality control procedures for the analyses include the insertion of laboratory standards, controls and blanks.
<i>Verification of sampling and assaying</i>	<ul style="list-style-type: none"> • No independent verification of rock chip sampling or bottle rolls has been completed. It is noted that the bottle rolls are considered indicative and a comprehensive metallurgical test work of the Bellchambers deposit is planned to commence shortly,
<i>Location of data points</i>	<ul style="list-style-type: none"> • A handheld GPS with an accuracy of +/-4m was used to locate rock chip sample locations. • Differential GPS was used to survey BCRC106 and BCRC107. • Grid systems used are geodetic datum: GDA 94, Projection: MGA, Zone 50.
<i>Data spacing and distribution</i>	<ul style="list-style-type: none"> • Rock-chip sampling was reconnaissance in nature with no fixed sample spacing or density.
<i>Orientation of data in relation to geological structure</i>	<ul style="list-style-type: none"> • The sampling was of a reconnaissance nature with bedrock outcrop representative sampling across strike of the prevailing geology.
<i>Sample security</i>	<ul style="list-style-type: none"> • All samples were transported directly to the Venus Perth office by staff or contractors before the samples were submitted to the Perth laboratory.
<i>Audits or reviews</i>	<ul style="list-style-type: none"> • No audits or reviews have been carried out to date on sampling techniques and data.

Section 2 Reporting of Exploration Results

Criteria	Commentary
<i>Mineral tenement and land tenure status</i>	<ul style="list-style-type: none"> • E57/984 is held jointly by Venus Metals Corporation Ltd (90%) and an independent prospector (10%). • To the best of Venus' knowledge, there are no known impediments to operate on the above listed EL.
<i>Exploration done by other parties</i>	<ul style="list-style-type: none"> • The area was explored by several exploration companies since 1981, including Western Mining Corporation Limited, Salamander Resources NL, Gold Mines of Australia Limited, Herald Resources Limited, Troy Resources NL, and Southern Cross Goldfields Limited. • Historical mining of the Bellchambers – Range View gold mines was during the early 1900's for a reported total of 3790 ounces of gold at average grade of 21 gm/t Au.
<i>Geology</i>	<ul style="list-style-type: none"> • Tenement E57/984 is situated along the western margin of the Archaean Sandstone Greenstone Belt and falls within the Atley (2741) GSWA 100K geological map sheet (Chen, 2003). The greenstone stratigraphy strikes north-northeast to northeast and consists of meta-basalt (Abv), meta-gabbro (Aog), metamorphosed ultramafic rocks including tremolite-chlorite schist (Aur), shales (As), banded-iron-formations (Aci), and banded cherts



Criteria	Commentary
	(Acc). A strongly foliated to amphibolitic metabasalt unit (Abf) is present along the western boundary of the greenstones with foliated granitic rocks (Agn, Agf, Agmf) outlining the Youanmi Fault Zone.
<i>Drill hole Information</i>	<ul style="list-style-type: none"> • Not applicable - no drilling reported.
<i>Data aggregation methods</i>	<ul style="list-style-type: none"> • No data aggregation methods used.
<i>Relationship between mineralization widths and intercept lengths</i>	<ul style="list-style-type: none"> • Not applicable - no drilling reported.
<i>Diagrams</i>	<ul style="list-style-type: none"> • See figures attached to this release.
<i>Balanced reporting</i>	<ul style="list-style-type: none"> • Location of all samples and assays of all rock-chip samples are shown in attached figures and table.
<i>Other substantive exploration data</i>	<ul style="list-style-type: none"> • See previous VMC ASX releases: 18 June 2015, 19 June 2019, 26 March 2021, 4 April 2023
<i>Further work</i>	<ul style="list-style-type: none"> • Follow-up field geological studies and geochemical surveys. Exploration drilling as required and resource drilling. Comprehensive metallurgical testwork on new larger representative samples

For personal use only