

2 April 2025

## St George at the Tribeca Future Facing Commodities Conference, Singapore

---

St George Mining Limited (**ASX: SGQ**) (“St George” or “the Company”) is participating in the 2025 Tribeca Future Facing Commodities Conference in Singapore as a Company Sponsor.

Attached is a copy of St George’s Presentation to the Conference.

The Presentation showcases St George’s 100%-owned Araxá Project – a de-risked, world-class project in Minas Gerais, Brazil, located adjacent to CBMM’s world-leading niobium mining operations.

The region around the Araxá Project has a long history of commercial niobium production and provides access to infrastructure and a skilled workforce. St George has negotiated government support for expedited project approvals and has assembled a highly experienced in-country team and established relationships with key parties and authorities in Brazil to drive the Project through exploration work and development studies.

Authorised for release by the Board of St George Mining Limited.

**John Prineas**

Executive Chairman

St George Mining

+61 411 421 253

[john.prineas@stgm.com.au](mailto:john.prineas@stgm.com.au)

**Peter Klinger**

Media and Investor Relations

Purple

+61 411 251 540

[pklinger@purple.au](mailto:pklinger@purple.au)

ersonal use only



**Niobium. Rare earths.**

**World class.**

# Disclaimer

## **Forward-Looking Statements:**

This Presentation may include forward-looking statements. Forward-looking statements include, but are not limited to, statements concerning St George's planned exploration program and other statements that are not historical facts. Although St George believes that its expectations reflected in these forward-looking statements are reasonable, such statements involve risks and uncertainties and no assurance can be given that actual results will be consistent with these forward-looking statements. Forward-looking statements involve known and unknown risks, uncertainties and other factors that are in some cases beyond St George's control, and which may cause actual results, performance or achievements to differ materially from those expressed or implied by the forward-looking statements. St George makes no representation or warranty as to the accuracy of any forward-looking statements in this Presentation and undue reliance should not be placed on such statements. Investors should also consider the Key Risks outlined in Appendix B of this Presentation.

## **No Warranty of Accuracy or Completeness:**

St George and its directors, employees and consultants make no representations or warranty as to the accuracy, reliability or completeness of this Presentation, and have no liability, including liability to any person by reason of negligence of, or contained in or derived from, or for any omissions from this Presentation, except liability under statute that cannot be excluded. This Presentation contains reference to certain targets and plans of St George which may or may not be achieved. The performance of St George may be influenced by a number of factors, uncertainties and contingencies, many of which are outside the control of St George and its directors, staff and consultants. Investors should also consider the Key Risks outlined in Appendix B of this Presentation.

## **Itafos Disclaimer:**

Itafos Inc and its associates have not approved and are not responsible for (and have not accepted any liability in respect of) the contents of this Presentation including its mineralogical-related content.




***St George becomes a global player in niobium and rare earths with the 100% acquisition of the advanced niobium-REE Araxá Project in Brazil***

***- acquisition completed on 26 February 2025***

ersonal use only

# Araxá Project – Investment Highlights

## *Advanced and de-risked world-class niobium-REE opportunity*

-  **Tier 1 location for niobium-REE projects**
  - Araxá is located in world's leading district for niobium production and adjacent to the flagship operation of CBMM, the world's largest niobium producer with ~80% of global supply
  - Brazil – and State of Minas Gerais in particular – emerging as global powerhouse for rare earths
-  **Near-surface, high-grade JORC resource**
  - Maiden JORC resource<sup>1</sup> confirms globally significant high-grade deposits:
  - 280kt contained niobium: 41.2 Mt at 0.68% Nb<sub>2</sub>O<sub>5</sub> (6,800ppm Nb<sub>2</sub>O<sub>5</sub>)
  - 1.7million tonnes TREO: 40.6 Mt at 4.13% TREO (41,300ppm TREO)
-  **Critical metals**
  - Niobium and REEs are critical metals essential to numerous modern technologies and clean energy solutions, and highly sought after by major economies
  - Important for a low-carbon world with fast-accelerating demand for battery applications
-  **In-country management and Government support**
  - St George in-country team led by ex-CBMM senior executives with more than 80 years' combined experience in niobium and at Araxá – Brazil's ex-Minister of Mines an Advisor to St George Board
  - Cooperation agreement with State of Minas Gerais to expedite project approvals
-  **Exceptional development opportunity**
  - Araxá situated in established mining district with existing infrastructure (roads and power), proven route to market and access to skilled workforce; open pit, free digging operation
  - Metallurgy interpreted to be similar to the adjacent producing CBMM mine

Refer to Appendix A for a list of references and Slide 5

# JORC resource<sup>1</sup>

## Globally significant niobium and rare earths deposits

Niobium resource			TREO resource			
41.2 Mt at 0.68% Nb <sub>2</sub> O <sub>5</sub> (6,800ppmNb <sub>2</sub> O <sub>5</sub> ) comprising (at a cut-off of 0.2% Nb <sub>2</sub> O <sub>5</sub> ):			40.6 Mt at 4.13% TREO (41,300ppm TREO) comprising (at a cut-off of 2% TREO):			
Classification	Million tonnes (Mt)	Nb <sub>2</sub> O <sub>5</sub> (%)	Classification	Million tonnes (Mt)	TREO (%)	MREO (%)
Measured	1.90	1.19	Measured	1.90	5.44	1.04
Indicated	7.37	0.93	Indicated	7.37	4.76	0.90
Inferred	31.93	0.59	Inferred	31.37	3.90	0.74
Total	41.20	0.68	Total	40.64	4.13	0.78

### Sought after niobium and TREO:

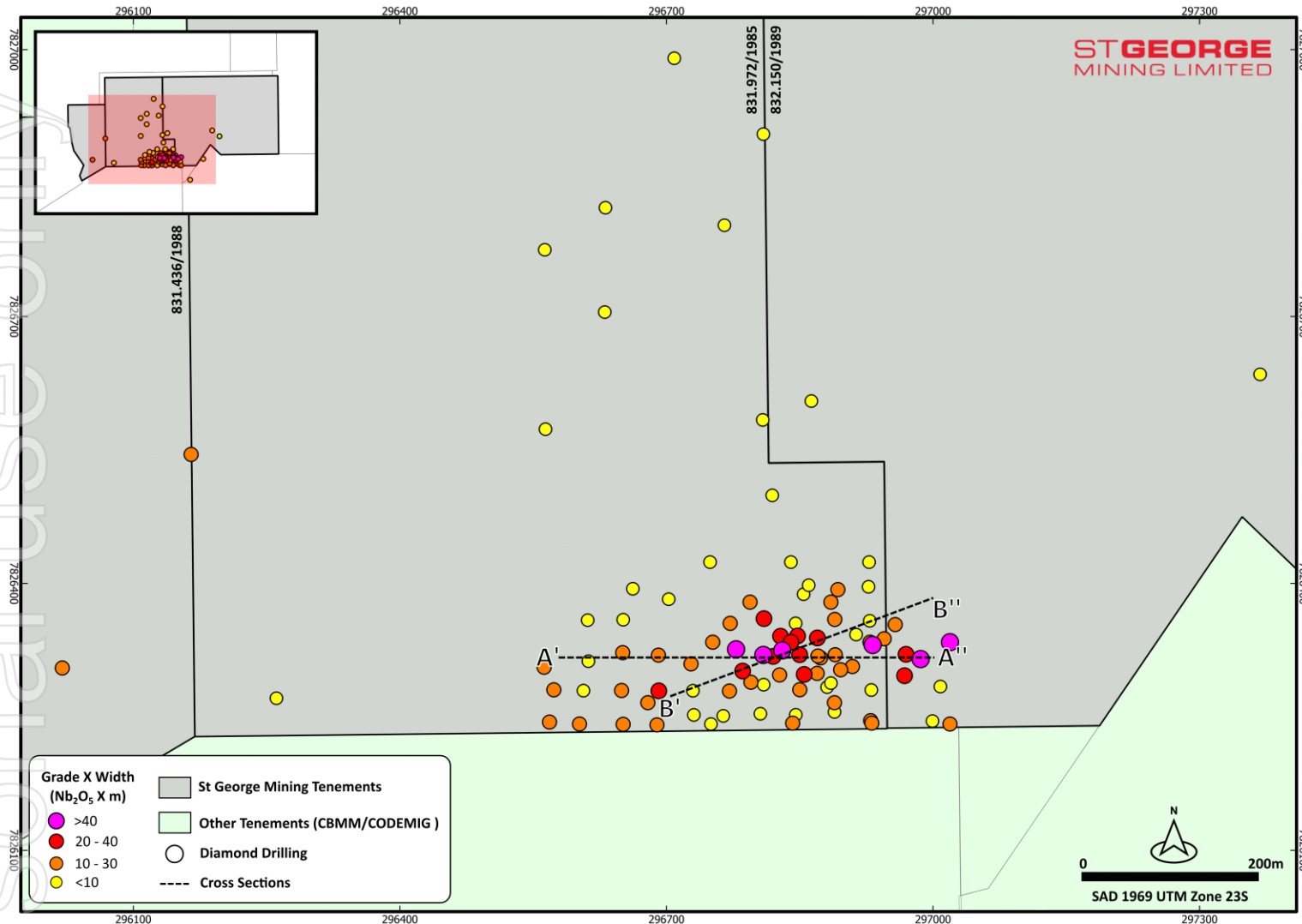
MRE contains **280kt niobium oxide** and **1.7 million tonnes TREO**

100% of the resource is constrained within the weathered profile at Araxá and 95.8% is within 100m from surface. The mineralisation is free-digging, supporting potential for low-cost open-pit mining.

Refer to Appendix A for full list of references

# Mineralisation open in all directions

## Resource expansion potential



- High-grade niobium and rare earth mineralisation remain open in all directions
- 
- Grades up to **82,970ppm (8.29%) Nb<sub>2</sub>O<sub>5</sub>** and **329,800ppm (32.98%) TREO** underscore high quality mineralisation<sup>1</sup>
- Outstanding potential for an order of magnitude resource increase, noting:
  - Less than 10% of the project tenure is closely-spaced drilled
  - Significant mineralisation below 100m from surface and in deeper fresh rock has not been included in the MRE

*Left:* Map of the total project area indicating the zone with close-spaced drilling.

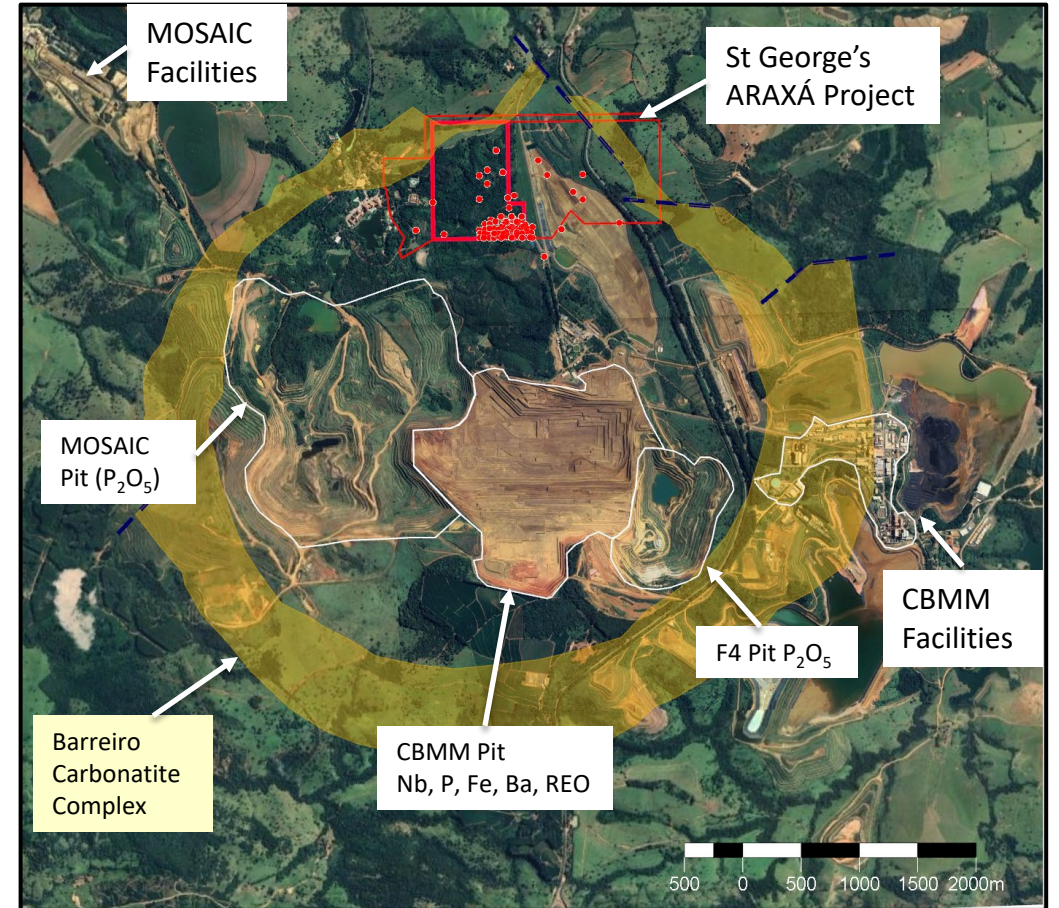
# Araxá Project

## Favourable location and project logistics

### TIER 1 NIOBIUM LOCATION

- Araxá Project is located within the Barreiro Carbonatite complex – a 5km wide carbonatite hosting hard-rock niobium, REE and phosphate mineralisation
- Surrounded by world-class mines – CBMM's Araxá niobium mine (896 Mt @ 1.49% Nb<sub>2</sub>O<sub>5</sub>) and Mosaic's Araxá phosphate mine (519 Mt @ 13.4% P<sub>2</sub>O<sub>5</sub>)<sup>1</sup> are also hosted in the Barreiro Carbonatite
- The carbonatite is the **world's 'dress circle' location** for niobium, producing ~80% of global supply<sup>2</sup>
- Location in an established mining district, 6km from Araxá town, with access to infrastructure and workforce - favourable project logistics for an expedited pathway to development

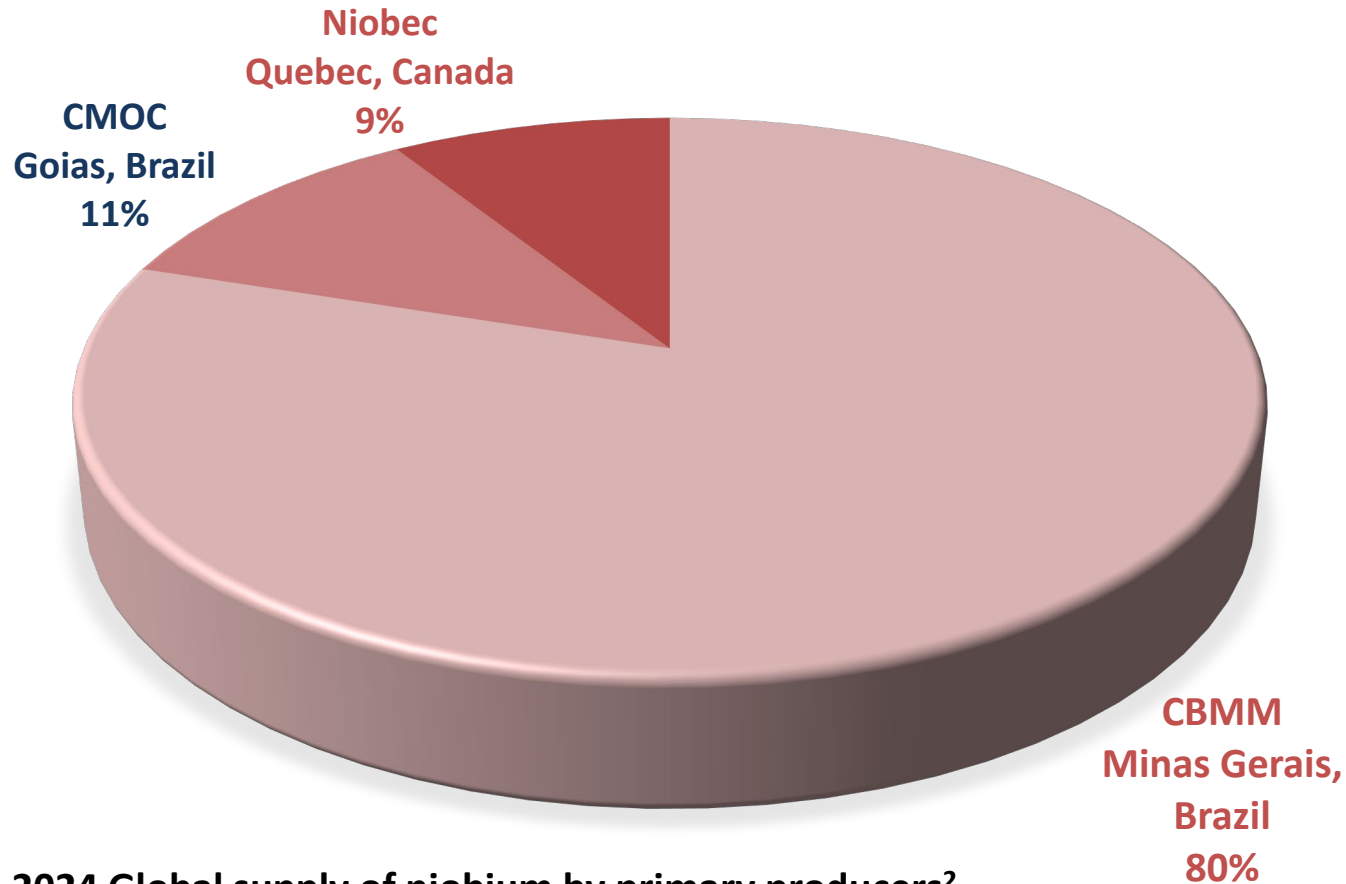
Refer to Appendix A for full list of references



Aerial Earth image of the Barreiro carbonatite complex showing the Araxá Project (red outline) as well as the adjacent CBMM niobium mine and the Mosaic phosphate mine.

# Niobium

Global supply concentration with only three producers



2024 Global supply of niobium by primary producers<sup>2</sup>

Refer to Appendix A for full list of references

## Asian buyers invest significant sums to secure supply<sup>1</sup>:

### March 2011:

US\$1.8b paid by Japanese/Korean consortium to buy 15% equity in CBMM

### Sept 2011:

US\$1.95b paid by Chinese Steel Consortium to buy 15% equity in CBMM

### April 2016:

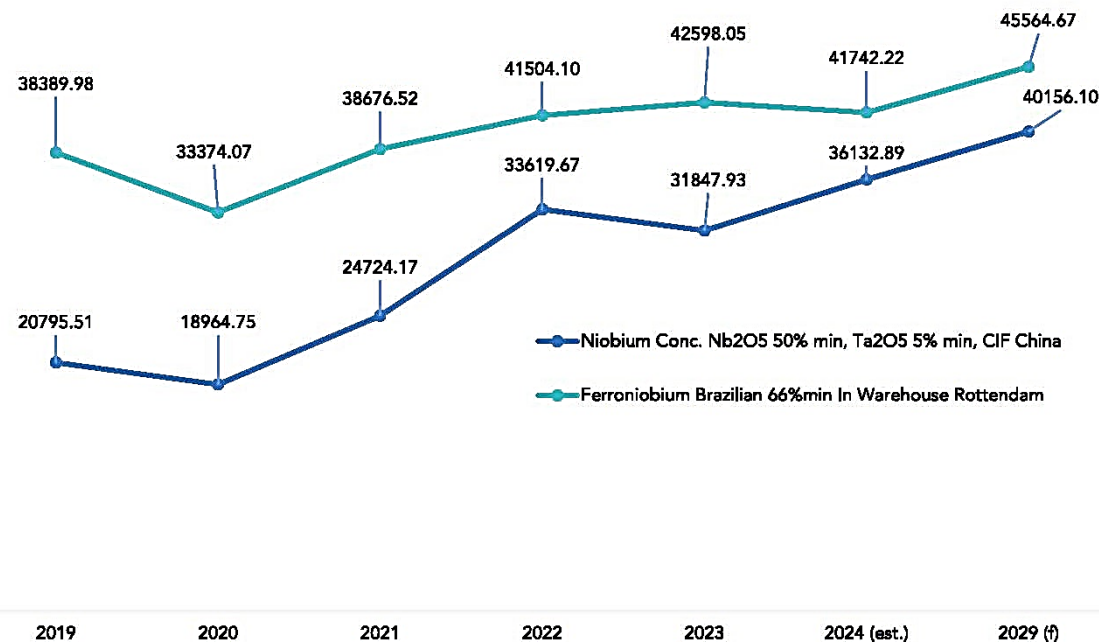
US\$1.5b paid by CMOG (China Molybdenum Co. Ltd) to Anglo American for 100% of its niobium and phosphate business in Brazil

# Niobium – Future Facing Commodity

*Essential for modern high-tech applications*

Niobium is produced into Ferroniobium (88% of demand) and Niobium oxide (12%)<sup>1</sup>

Ferroniobium	Niobium Oxide
<ul style="list-style-type: none"> <li>Widely used in the steel industry to deliver performance improvements</li> </ul>	<ul style="list-style-type: none"> <li>Niobium oxide is produced through further refinement of ferroniobium</li> </ul>
<ul style="list-style-type: none"> <li>Niobium alloys create stronger, corrosive resistant and lighter steel – ideal for many industrial applications</li> </ul>	<ul style="list-style-type: none"> <li>Lithium-ion batteries performance improved with niobium – lighter, faster charging, longer life</li> </ul>
<ul style="list-style-type: none"> <li>Key uses are:                             <ul style="list-style-type: none"> <li>Pipelines</li> <li>Automobiles</li> <li>Structural steel for construction</li> <li>Water resistant machinery</li> <li>Other stainless steel</li> </ul> </li> </ul>	<ul style="list-style-type: none"> <li>Key markets are:                             <ul style="list-style-type: none"> <li>MRI equipment</li> <li>Optical lenses</li> <li>Superconductive magnets</li> <li>High temperature alloys for aerospace and defence</li> </ul> </li> </ul>



Refer to Appendix A for full list of references

# Araxá Project Development

- *Ready to Deliver Value for Shareholders*

**STGEORGE**  
MINING LIMITED

ersonal use only



# Project Delivery Team

## *In-country experts*

### **Brazil Team**

#### **Director, ESG and Technical Development: Thiago Amaral**

Engineer with more than 17 years experience with CBMM including Head of Sustainability (including licensing and ESG management); Global Quality and Product Regulation; and Business Development in China

#### **Director, Mining Operations: Adriano Rios**

Engineer with more than 23 years experience at CBMM including as Production Manager, responsible for planning, managing and monitoring mineral processing and metallurgy units.

#### **Consultant, Plant Engineer: Carlos Alberto de Araujo**

Industrial project engineer who managed the design, construction and commissioning of CBMM's technologically advanced niobium processing plant at Araxá.

#### **Consultant, Mineral Processing: Ricardo Maximo Nardi**

Former Head of Mineral Production Process at CBMM with more than 30 years' experience in niobium mineral processing.

#### **Director, Corporate Development: Caue (Paul) Araujo**

Experienced natural resources executive, previous roles include Global General Manager (Mine Finance) at Palaris; Partner / Regional Director - Investment and Business Planning at Hatch in Perth (Advisory); and SRK Consulting - General Manager Brazil.

#### **Senior Exploration Geologist: Wanderly Basso**

Brazilian trained geologist with technical qualifications in Brazil and Australia. Experience in managing a full suite of geological activities in Brazil including exploration, metallurgy, resource modelling and mining.

#### **Advisor to the Board:**

##### **Adolfo Sachsida**

Highly credentialed business leader – ex-Minister of Mines and Energy (2022); Chief Secretary of Economic Affairs, Ministry for the Economy; and Secretary of Economic Policy, Ministry for the Economy

#### **Permitting Advisor:**

##### **Alger Consultoria – Germano Vieira**

Advisor on environmental and heritage matters; former Secretary of Environment and Development

# Supportive State Government

## *MoU signed to expedite project approvals*

- **Expedited Licensing:** St George on 30 October 2024 signed a non-binding Memorandum of Understanding with the State of Minas Gerais (Invest Minas)
- The State will assist with progressing regulatory approvals in an accelerated manner in recognition of St George's significant proposed investment in the Araxá niobium-REE Project.
- Similar to the MoU signed with Latin Resources (ASX: LRS) which resulted in their Preliminary Licence issued in 9 months, compared to the typical 3-4 years
- Environmental and heritage studies are underway, together with submissions to relevant agencies; potential to have permitting completed by Q4 2026



# Development partnerships

## Processing, engineering and construction

### EMBRAPII and SENAI – optimizing the processing flowsheet

St George and two of Brazil's leading scientific agencies – EMBRAPPII and SENAI – to work together on developing a sustainable process for production of ferroniobium and rare earths products

**EMBRAPII** (“Associação Brasileira de Pesquisa e Inovação Industrial” / Brazilian Association for Research and Industrial Innovation) and **SENAI** (“Serviço Nacional de Aprendizagem Industrial” / National Industrial Educational Services).

### Permanent magnet facility unit Lab Fab

Lab Fab, located in Minas Gerais, is the first permanent magnet maker facility in Latin America.

Lab Fab was built by the State of Minas Gerais and was recently acquired by the Federation of the Industries of Minas Gerais (FIEMG).

St George and SENAI/FIEMG to collaborate on the production of rare earth magnets – potential for St George to supply REE raw materials for production of rare earth magnets.

### EPC+F partner – Xinhai Mining Technology

St George and the Xinhai Group – a global service provider to the mining sector at more than 2,000 mines in more than 100 countries – to work together on mine development and construction

Key process engineering, procurement and construction services for mine construction and management

Funding support for project development

### Industry players recognise new, potential near-term producer

MoU signed with industry players to collaborate on project development

Liaoning Fangda, a steelmaking giant

SKI Hong Kong, a specialist ferro-alloy trading firm

# Advancing the Araxá Project

## Initiatives underway with strong newsflow

### NEWSFLOW

#### Permitting Process

- Two mining concession applications and one exploration permit.
- Engagement with Government and licensing authorities commenced.

Licensing progresses in 2025

#### Resource modelling

- Resource modelling commenced using extensive historical drilling database, to be supplemented by St George's drilling post-acquisition.
- Maiden JORC compliant resource issued on 1 April 2025.

Q1 2025 – JORC  
Q1 2025 onwards – new drilling/assay results

#### Pilot plant, network and sample products

- Existing pilot plant undergoing technical review.
- Potential to re-start pilot plant and produce sample niobium/REE products in H1 2025.

Q2 2025 – pilot plant and sample products plus met testwork

#### Strategic investors and offtake partners

- Discussions underway with multiple potential strategic investors and offtake partners.

Q2/Q3 2025  
Strategic partners commit to support development

#### Development studies

- Planning for development studies has commenced with discussions ongoing with service providers.

Studies underway  
Initial deliverables in Q2 2025 and ongoing

# Company Overview

Led by an experienced Board, the share price has responded favourably to the Araxá acquisition

## Company Snapshot

ASX Code	SGQ
Share Price (1 April 25)	A\$0.02
Shares on Issue	2,667,822,435
Market Capitalisation <sup>1</sup>	A\$51m
Listed options (SGQOC)	861,111,025
Listed options (SGQO)	39,188,238

## Board of Directors

Executive Chairman	John Prineas
Non-Executive Director	John Dawson
Non-Executive Director	Sarah Shipway

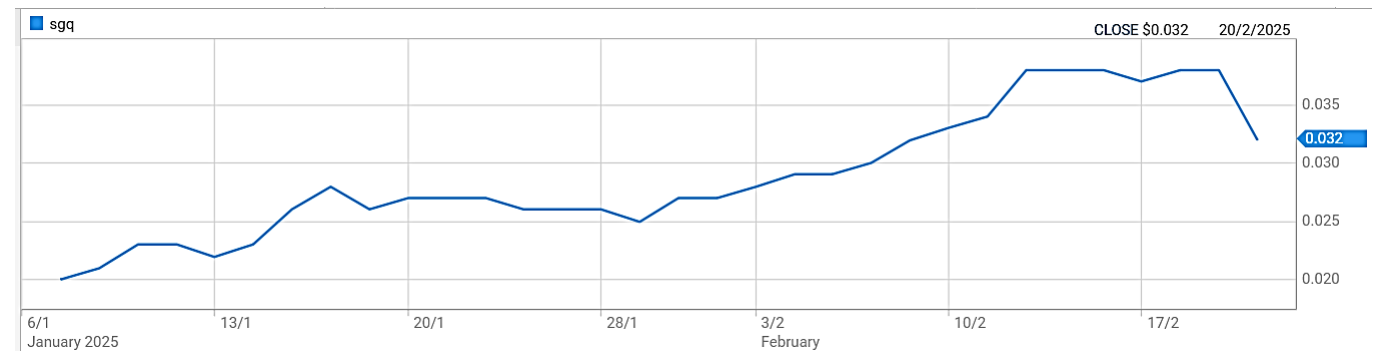
1. As at 1 April 2025.

2. The Company has on issue 39,224,209 unlisted options with various exercise prices and exercise dates and 123,611,100 Performance Rights.

## A\$20 million capital raising

A\$20m raise completed on 21 February 2025:

- New shares issued at \$0.02 per share
- Free attaching option; 1 option for every two shares subscribed with an exercise price of \$0.04 per on or before 24 February 2027



**SGQ share price since varied acquisition announced on 7 January 2025**

**ST GEORGE MINING LIMITED**

*Building a globally significant niobium-REE mining  
company*

# Appendix A - References

## Slides 4 and 5:

1. See our ASX Release dated 1 April 2025 entitled “High-Grade Niobim and REE JORC Resource for Araxa” for details on the JORC resource.

## Slide 6

1. See Table 3 of our ASX Release dated 6 August 2024 entitled ‘Acquisition of High-Grade Araxá Niobium Project’ for a full list of drill intercepts.
2. Mordor Intelligence, Global Niobium Market 2022-2029.

## Slide 7

1. For CBMM Araxa mine resource see ‘Main Minerals of The Araxá Alkali-carbonatite Complex, Minas Gerais State, Brazil’ by João Carlos Biondi, José Marques Braga, Journal of South American Earth Sciences, December 2023. For the Mosaic phosphate resource, see ‘Geology, geochemistry, and mineralogy of saprolite and regolith ores with Nb, P, Ba, REEs (+ Fe) in mineral deposits from the Araxá alkali-carbonatitic complex, Minas Gerais state, Brazil’ by José Marques Braga and João Carlos Biondi, Journal of South American Earth Sciences, May 2023
2. Mordor Intelligence, Global Niobium Market 2022-2029.

## Slide 8

1. Mordor Intelligence, Global Niobium Market 2022-2029.
2. Mordor Intelligence, Global Niobium Market 2022-2029; China Molybdenum Co., Ltd. ‘Major Transaction Acquisition of Angle American PLC’s Niobium and Phosphates Businesses’. (2016); [www.cbmm.com/our history](http://www.cbmm.com/our%20history).

## Slide 9

1. and 2. Mordor Intelligence, Global Niobium Market 2022-2029.

# Appendix B – Key Risks

The future performance of the Company and the value of its shares may be influenced by a range of factors, many of which are largely beyond the control of the Company and its directors. Key risks associated with the Company's business and the industry in which it operates as well as general risks applicable to all investments in listed securities generally are described below.

## Exploration and Operating Risk

The mineral exploration licences comprising the Araxa Project are at various stages of exploration, and potential investors should understand that mineral exploration and development are high-risk undertakings. There can be no assurance that future exploration of these licences will result in the discovery of an economic resource. Even if an apparently viable resource is identified, there is no guarantee that it can be economically exploited.

The future exploration activities of the Company may be affected by a range of factors including geological conditions, limitations on activities due to seasonal weather patterns or adverse weather conditions, unanticipated operational and technical difficulties, difficulties in commissioning and operating plant and equipment, mechanical failure or plant breakdown, unanticipated metallurgical problems which may affect extraction costs, industrial and environmental accidents, industrial disputes, unexpected shortages and increases in the costs of consumables, spare parts, plant, equipment and staff, native title process, changing government regulations and many other factors beyond the control of the Company.

The success of the Company will also depend upon the Company being able to maintain title to the mineral exploration licences comprising the Project and obtaining all required approvals for their contemplated activities. In the event that exploration programmes prove to be unsuccessful this could lead to a diminution in the value of the Project, a reduction in the cash reserves of the Company and possible relinquishment of one or more of the mineral exploration licences comprising the Project.

## Tenure

Mining and exploration tenements are subject to periodic renewal. The renewal of the term of granted tenements are subject to the applicable mining acts and regulations in Brazil and the discretion of the relevant mining authority. Renewal conditions may include increased expenditure and work commitments or compulsory relinquishment of areas of the tenements. The imposition of new conditions or the inability to meet those conditions may adversely affect the operations, financial position and/or performance of the Company.

The Company considers the likelihood of tenure forfeiture to be low given the laws and regulations governing mineral tenements in Brazil and the ongoing expenditure budgeted for by the Company. Tenements 832.150/1989 and 831.436/1988 are subject to renewal and extension applications to ANM (the relevant mining authority). There is no certainty that the renewal and extension requests will be granted or granted on conditions that are acceptable. Tenement 831.972/1985 is an application for a mining concession that is progressing through the application process. There is no certainty that the application will be granted or granted on conditions that are acceptable.

## Appendix B – Key Risks (continued)

The future performance of the Company and the value of its shares may be influenced by a range of factors, many of which are largely beyond the control of the Company and its directors. Key risks associated with the Company's business and the industry in which it operates as well as general risks applicable to all investments in listed securities generally are described below.

### Access

The tenements comprising the Araxa Project are situated on private land. Access to the tenements to carry out exploration and potential mining operations must be agreed with the landowners, being the Government owned CODEMIG and CBMM. Access arrangements have been agreed in the past to allow drilling and other exploration to be carried out on the tenements. There is no certainty as to the timing of further access arrangements.

The suppression of vegetation at the Araxa tenements requires approval from a number of Government authorities. These kind of approvals have been granted previously for exploration and mining at the Barreiro Carbonatite. There is no certainty that similar approvals will be granted in the future or granted on conditions that are acceptable..

### Grant of future authorisations to explore and mine

If the Company discovers an economically viable mineral deposit that it then intends to develop, it will, among other things, require various approvals, licences and permits before it will be able to mine the deposit. There is no guarantee that the Company will be able to obtain all required approvals, licenses and permits. To the extent that required authorisations are not obtained or are delayed, the Company's operational and financial performance may be materially adversely affected.

### Environment

The operations and proposed activities of the Company at the Araxa Project are subject to laws and regulations concerning the environment. As with most exploration projects and mining operations, the Company's activities are expected to have an impact on the environment, particularly if advanced exploration or mine development proceeds. It is the Company's intention to conduct its activities to the highest standard of environmental obligation, including compliance with all environmental laws.

Mining operations have inherent risks and liabilities associated with safety and damage to the environment and the disposal of waste products occurring as a result of mineral exploration and production. The occurrence of any such safety or environmental incident could delay production or increase production costs. Events, such as unpredictable rainfall or bushfires may impact on the Company's ongoing compliance with environmental legislation, regulations and licences. Significant liabilities could be imposed on the Company for damages, clean up costs or penalties in the event of certain discharges into the environment, environmental damage caused by previous operations or non-compliance with environmental laws or regulations.

Approvals are required for land clearing and for ground disturbing activities. Delays in obtaining such approvals can result in the delay to anticipated exploration programmes or mining activities.

## Appendix B – Key Risks (continued)

The future performance of the Company and the value of its shares may be influenced by a range of factors, many of which are largely beyond the control of the Company and its directors. Key risks associated with the Company's business and the industry in which it operates as well as general risks applicable to all investments in listed securities generally are described below.

### **Environmental Risk**

Some areas within the project site are a listing and preservation zone by the municipality, according to the current master plan, recognized by Brazil and the State of Minas Gerais, according to the Geoenvironmental Study of Hydromineral Sources/Araxá Project conducted by CPRM/Geological Service of Brazil. This classification is designed to protect water resources and vegetation within the designated area. Approvals are required from the relevant authorities to conduct exploration and mining activities in these areas, presenting a significant environmental management risk to the project. There is no certainty that approvals will be granted in the future or granted on conditions that are acceptable

### **Additional capital**

The Company's capital requirements depend on numerous factors. The Company will require further financing in the future to meet the remaining payments to the vendor of the Araxa Project as well as to continue exploration and development activities. Any additional equity financing will dilute shareholdings, and debt financing, if available, may involve restrictions on financing and operating activities. If the Company is unable to obtain additional financing as needed, it may be required to relinquish the Araxa Project to the vendor, reduce the scope of its operations and/or scale back its exploration programmes as the case may be. There is however no guarantee that the Company will be able to secure any additional funding or be able to secure funding on terms favourable to the Company.

# Appendix C – References to previous announcements

This ASX announcement contains information extracted from the following reports which are available on the Company's website at [www.stgm.com.au](http://www.stgm.com.au):

- 1 April 2025 *High-Grade Niobium and REE JORC Resource for Araxa*
- 6 August 2024 *Acquisition of High-Grade Araxa Niobium Project*
- 20 August 2024 *Key In-country Appointments*
- 27 August 2024 *St George Appoints Ex-minister of Mines as Advisor*
- 21 October 2024 *Strategic MoU and Offtake with Global Metal Trader.*
- 31 October 2024 *MoU with the State of Minas Gerais to assist fast-tracking of approvals for high-grade niobium-REE Araxa Project in Brazil.*
- 5 November 2024 *Update on Acquisition of Araxa niobium-REE Project.*
- 18 November 2024 *St George appoints Leading Environmental Consultancy to advance high-grade niobium-REE Araxa Project.*
- 12 December 2024 *St George signs partnership for downstream niobium and rare earth processing and production in Brazil.*
- 7 January 2025 *Araxa Niobium-REE Project – Acquisition Locked-in*
- 9 January 2025 *Niobium and REE Processing Co-venture for Araxa*
- 15 January 2025 *Steelmaking Giant signs Development and Offtake MoU for Araxa*
- 3 February 2025 *Ex-CBMM Head of Mineral Processing Appointed*
- 12 February 2025 *A\$8M Investment and EPC Deal for Araxa Niobium Project*
- 18 February 2025 *Niobium Engineering Expert Appointed*
- 18 February 2025 *Shareholders Back Araxa Acquisition*
- 27 February 2025 *St George Completes Araxa Acquisition*
- 5 March 2025 *Niobium and REE Downstream Processing Study at Araxa*
- 1 April 2025 *High-Grade Niobium and REE JORC Resource for Araxa*

# Competent Person Statement

## **Competent Person Consent - MRE**

The information in this Presentation that relates to Mineral Resource Estimate and historical/foreign results is based upon, and fairly represents, information and supporting documentation reviewed and compiled by Mr. Beau Nicholls, a Competent Person who is a Fellow of The Australian Institute of Geoscientists. Mr. Nicholls is the Principal Consultant of EM2 Ltd (Sahara), an independent consultancy engaged by St George Mining Limited for the review of historical data and preparation of the Mineral Resource Estimate for the Araxá Niobium & Rare Earth Project under the JORC guidelines of 2012.

Mr Nicholls has sufficient experience that is relevant to the style of mineralisation and type of deposit under consideration and to the activity being undertaken to qualify as a Competent Person as defined in the 2012 edition of the "Australasian Code for Reporting of Exploration Results, Mineral Resources and Ore Reserves".

The information in this Presentation that relates to Mineral Resource Estimate is based upon, and fairly represents, information and supporting documentation reviewed and compiled by Mr. Leandro Silva, a Competent Person who is Member of The Australian Institute of Geoscientists. Mr. Silva is the Consulting Geologist of EM2 Ltd (Sahara), an independent consultancy engaged by St George Mining Limited for the review of historical data and preparation of the Mineral Resource Estimate for the Araxá Niobium & Rare Earth Project under the JORC guidelines of 2012. Mr Silva has sufficient experience that is relevant to the style of mineralisation and type of deposit under consideration and to the activity being undertaken to qualify as a Competent Person as defined in the 2012 edition of the "Australasian Code for Reporting of Exploration Results, Mineral Resources and Ore Reserves".

This Presentation contains information extracted from the following reports which are available on the Company's website at [www.stgm.com.au](http://www.stgm.com.au):

- 1 April 2025 High-Grade Niobium and REE JORC Resource for Araxa.

The Company confirms that it is not aware of any new information or data that materially affects the exploration results included in any original market announcements referred to in this Presentation and that no material change in the results has occurred. The Company confirms that the form and context in which the Competent Person's findings are presented have not been materially modified from the original market announcements.

## **Competent Person Consent - Historical and Foreign Results**

The information in this Presentation that relates to historical and foreign results is based upon, and fairly represents, information and supporting documentation reviewed by Mr. Carlos Silva, Senior Geologist employed by GE21 Consultoria Mineral and a Competent Person who is a Member of The Australian Institute of Geoscientists. GE21 an independent consultancy engaged by St George Mining Limited for the review of historical exploration data. Mr Silva has sufficient experience that is relevant to the style of mineralisation and type of deposit under consideration and to the activity being undertaken to qualify as a Competent Person as defined in the 2012 edition of the "Australasian Code for Reporting of Exploration Results, Mineral Resources and Ore Reserves".

This Presentation contains information extracted from the following reports which are available on the Company's website at [www.stgm.com.au](http://www.stgm.com.au):

- 6 August 2024 Acquisition of High-Grade Araxa Niobium Project

The Company confirms that it is not aware of any new information or data that materially affects the exploration results included in any original market announcements referred to in this Presentation and that no material change in the results has occurred. The Company confirms that the form and context in which the Competent Person's findings are presented have not been materially modified from the original market announcements.