

ASX Announcement

3 April 2025

Outstanding Copper Recoveries from Locked Cycle Flotation Tests at the Briggs Copper Project, Queensland

HIGHLIGHTS

- Locked cycle froth flotation test work for the Briggs Copper Project, confirms excellent recoveries into high-quality, marketable concentrates across coarse to very coarse primary grind sizes.
 - The test work was overseen by Scott Dalley Francks Pty Ltd.
- Locked cycle tests were conducted on two master composites from the Briggs Copper Project, representing the felsic intrusive (porphyry) core and the surrounding volcanic-sediment, delivering exceptional results for both:
 - Intrusive: 95% copper recovery into concentrates grading 29% copper
 - Volcanic-sediment: 94% copper recovery into concentrates grading 23% copper
- Molybdenum was also recovered into the copper concentrate, achieving recoveries of 62% (intrusive, 2,000ppm in concentrate) to 73% (volcanic-sediment, 3,200ppm in concentrate), with significant scope for improvement from optimization work.
- Precious metals (silver and gold) were also recovered into the final concentrates at levels suitable for future negotiations on precious metal payability with potential off-take partners.
- No trace metals or penalty elements of concern were detected in the final concentrates.
- Ongoing metallurgical test work includes an evaluation of coarse particle flotation at 300µm primary grind size. These studies may further reduce power consumption.
- The ongoing test work program will establish a viable flowsheet for the processing of Briggs mineralisation, comprising conventional crushing, grinding and flotation circuits to produce saleable concentrates.
- Work on a revised Mineral Resource Estimate (“MRE”) for Briggs is nearing completion.
- The metallurgical test work results and updated MRE form part of a Scoping Study to evaluate the potential for mining at the Briggs Copper Project. Preliminary results from the Scoping Study are expected in mid-2025.

Managing Director, Grant Craighead, said: *“These outstanding results further enhance the development potential at Briggs, confirming the opportunity to achieve high copper and molybdenum recoveries into a clean, marketable concentrate via a conventional processing route. Significantly, by achieving these recoveries at a coarse primary grind size, we should be able to drive processing costs towards the lower end of the curve for a porphyry copper project.”*

Looking ahead, an updated Mineral Resource Estimate for Briggs will be released shortly, followed by the results from our Scoping Study in mid-2025.”

Canterbury Resources Limited (**Canterbury** or the **Company**) provides an update covering additional metallurgical test-work results for the Briggs Copper Project (**Briggs**). This follows the excellent preliminary results outlined in late-February¹. Evaluation at Briggs is being funded by Alma Metals Limited (**Alma**) under an Earn-In Joint Venture (**JV**) agreement with Canterbury. Alma holds a 51% JV interest and is increasing this to 70% by funding a further \$10 million.

The results from the locked-cycle flotation metallurgical test work programs are very encouraging, highlighting excellent recovery of copper (up to 94.7%) into a marketable copper concentrate at coarse to very coarse primary grind sizes (up to 212µm). The test work was undertaken by Auralia Metallurgy, under the supervision of Mr Ivan Hunter from Scott Dalley Franks Pty Ltd. Details are presented below:

Sample Selection

Copper and molybdenum mineralisation at Briggs occurs in stockwork veins and disseminations in porphyritic granodiorite intrusions and surrounding volcanic-sediment. Metallurgical test work was undertaken on a master composite for each rock class that was prepared from diamond drill core that had been recently drilled by Alma. Each master composite was prepared from five variability composites to provide representative spatial, grade and lithology distribution across the deposit (see Figure 1 for variability composite sample locations, and Table 1 for composite details).

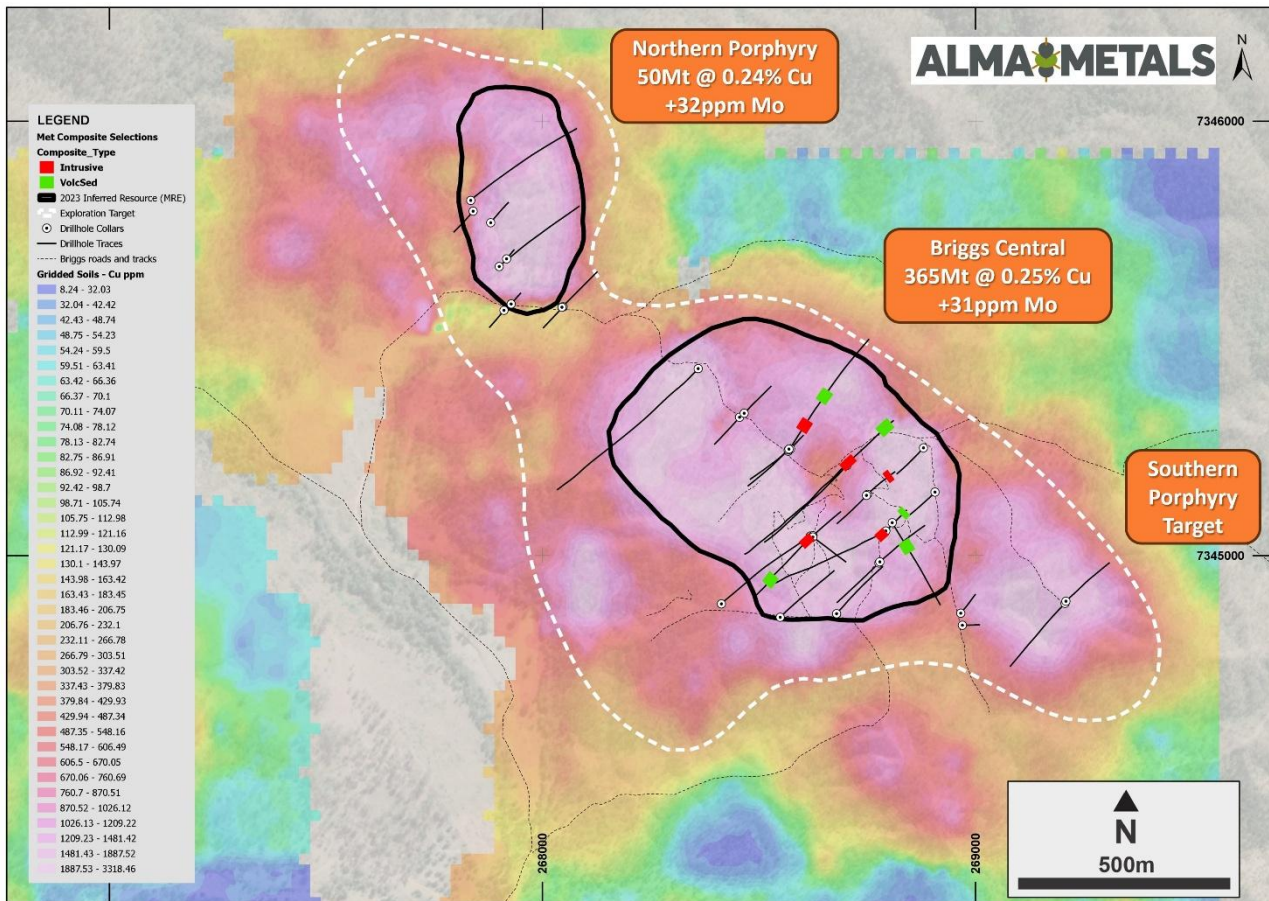


Figure 1 Plan view showing location of sample selections for variability composites for metallurgical test work (red = intrusive master composite, green = volcanic-sediment master composite). Plotted on gridded Cu in soil geochemistry.

¹ CBY ASX release 27 February 2025

Table 1

TABLE 1: BRIGGS MASTER COMPOSITE PREPARATION											
Master Composite	Sample Type	DH ID	From	To	Variability Composite ID	Weight kg	Interval	Mo ppm	Cu ppm	S %	S:Cu Ratio
Volc-Sed	½ HQ	23BRD0016	204.00	247.65	BRV_16_1	178	43.65	25.00	2887	1.23	4.26
Volc-Sed	½ HQ	23BRD0019	152.70	198.30	BRV_19_1	177	45.60	47.00	2560	1.15	4.49
Volc-Sed	½ HQ	23BRD0021	72.70	119.15	BRV_21_1	176	46.45	111.00	2597	1.37	5.28
Volc-Sed	½ HQ	23BRD0024	146.40	195.00	BRV_24_1	192	48.60	59.00	3112	1.43	4.60
Volc-Sed	½ HQ	24BRD0026	191.00	234.70	BRV_26_1	161	43.70	48.00	3835	0.91	2.37
						884	228.00	58.6	2992	1.22	4.09
Intrusive	½ HQ	23BRD0016	86.75	130.35	BRI_16_1	176	43.60	9.00	2252	0.45	2.00
Intrusive	½ HQ	23BRD0020	145.80	188.50	BRI_20_1	156	42.70	18.00	3455	0.57	1.65
Intrusive	½ HQ	23BRD0023	174.95	220.05	BRI_23_1	177	45.10	47.00	2789	0.73	2.62
Intrusive	½ HQ	23BRD0025	48.20	93.80	BRI_25_1	173	45.60	19.00	2378	0.41	1.72
Intrusive	½ HQ	24BRD0027	124.90	169.85	BRI_27_1	157	44.95	49.00	2200	0.55	2.50
						839	221.95	28.6	2608	0.54	2.08

Locked Cycle Flotation Test Work

Results from 26 5kg batch flotation tests performed on the two master composites, including rougher floats, cleaner floats and recleaner floats were reported on 27 February 2025.

Locked-cycle test work (LCT) was undertaken on two 72kg sub-samples of each master composite, treating 12kg per cycle. The locked cycle tests were carried out using the same conditions as the 5kg batch tests which delivered 28.5% copper grade at 88.7% Cu recovery for the intrusive master composite and 23.5% copper grade at 88.5% recovery for the volcanic-sediment master composite with the flowsheet shown in Figure 2.

Significantly higher copper recoveries were achieved in the locked cycle tests (Tables 2 and 3) compared to the previous batch tests (see comparisons in Figures 3, 4 and 5), and can be explained by the inclusion of the recycling streams and addition of a cleaner scavenger circuit in the LCT:

- **Intrusive:** 94.8% copper recovery into concentrates grading 29.0% copper.
- **Volcanic-sediment:** 93.7% copper recovery into concentrates grading 22.9% copper.

Table 2 Locked Cycle Test Results Briggs Intrusive Master Composite

Stream	Mass %	Copper Grade %	Sulphur Grade %	Moly Grade ppm	Copper Rec %	Sulphur Rec %	Moly Rec %
Final Concentrate	0.88	29.0	31.4	2021	94.8	60.4	62.0
Rougher Concentrate	3.7	6.97	12.2	591	96.0	98.9	76.6
Cleaner Tail	2.8	0.12	6.22	147	1.23	38.5	14.6
Rougher Tail	96.3	0.011	0.005	7	3.96	1.05	23.4
Feed	100.0	0.27	0.46	28.7	100.0	100.0	100.0

Table 3 Locked Cycle Test Results Briggs Volcanic-sediment Master Composite

Stream	Mass %	Copper Grade %	Sulphur Grade %	Moly Grade ppm	Copper Rec %	Sulphur Rec %	Moly Rec %
Final Concentrate	1.24	22.9	25.8	3226	93.7	34.2	73.0
Rougher Concentrate	6.4	3.54	11.8	808	95.1	92.5	89.1
Cleaner Tail	5.2	0.076	10.1	105	1.30	55.8	9.96
Rougher Tail	93.6	0.016	0.10	10	4.88	7.52	10.9
Feed	100.0	0.30	0.94	55	100.0	100.0	100.0

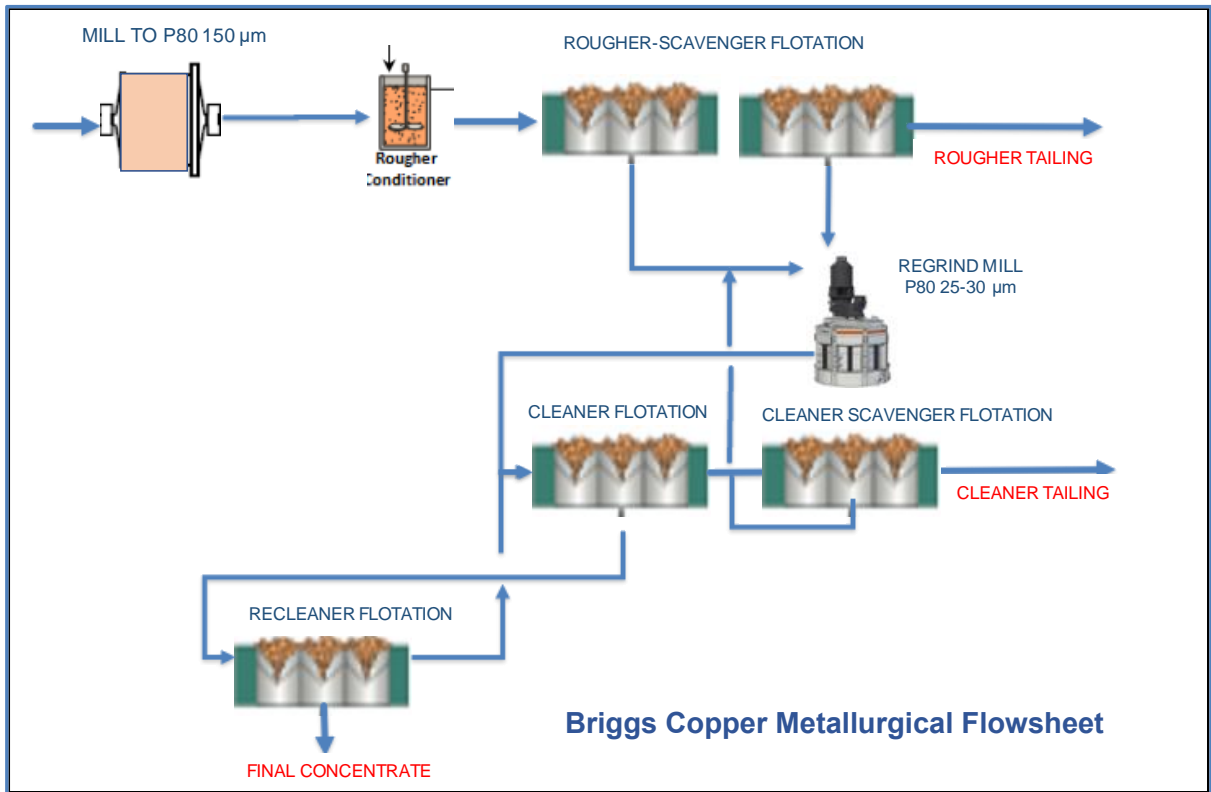


Figure 2 Briggs Locked Cycle Flowsheet

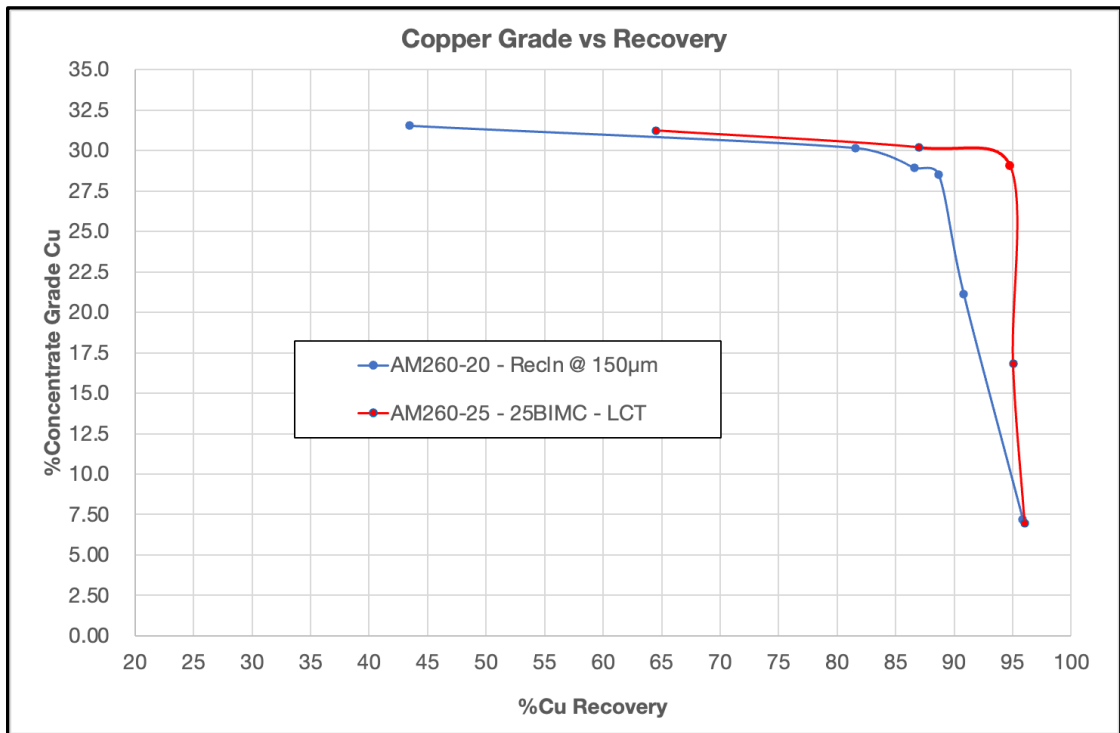


Figure 3 Briggs Intrusive Composite LCT (red line) vs Batch Test (Blue line) Copper Grade Recovery Curve

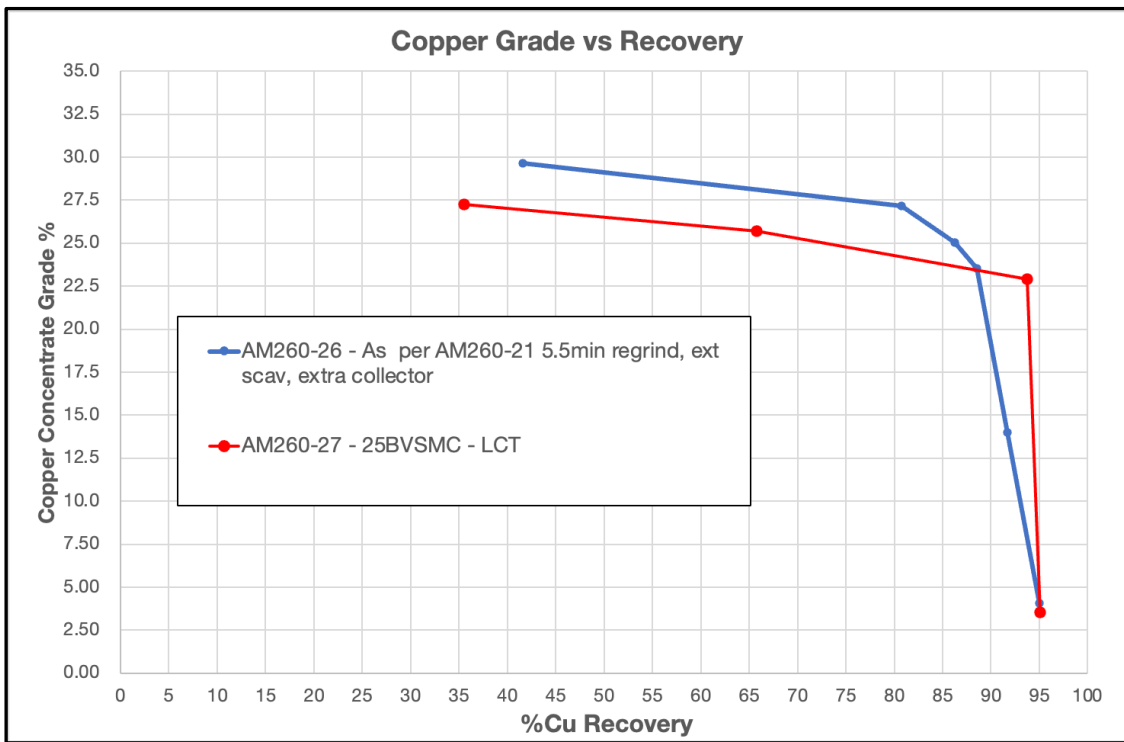


Figure 4 Briggs Volcanic-Sediment Composite LCT (red line) vs Batch Test (Blue line) Copper Grade Recovery Curve

Figure 4 demonstrates that there is room for improvement in the concentrate grade for the volcanic-sediment composite by reducing cleaner density and control of frother addition/type.



Figure 5 Locked cycle final concentrate for Briggs Intrusive Master Composite, Cycle 6

Molybdenum Recovery

Molybdenum was not specifically targeted in the recovery and will be optimised once the copper flowsheet is confirmed. However, the overall recovery of molybdenum was 62% (2,021ppm Mo into concentrate) for the intrusive master composite and 73% (3,226ppm Mo in concentrate) for the higher-grade volcanic-sediment master composite (see Tables 2 and 3).

Additional work to optimise molybdenum recovery will be conducted in future studies, including an evaluation of whether a molybdenum cleaner circuit should be added to the flowsheet.

Precious Metal Recovery into Copper Concentrates

Chemical analysis of the locked-cycle concentrates indicates levels of silver well above normal payability thresholds of 31g/t Ag (72g/t Ag in the intrusive composite concentrate and 54g/t Ag in the volcanic-sediment composite concentrate). Gold levels of 0.7g/t Au and 0.4g/t Au respectively are below traditional payability thresholds (1g/t Au).

Copper Concentrate Analysis

Detailed chemical analysis of the locked-cycle concentrates indicates that there are no trace elements of concern or penalty elements above threshold levels, apart from slightly elevated silica, alumina and fluorine levels in the volcanic-sediment composite concentrate. Optimisation of the flotation parameters for the volcanic-sediment composites will address this issue in future test work.

Further Metallurgical Test Work

Additional test work to assess copper recoveries at even coarser primary grind sizes (300µm) will commence shortly and may lead to further reductions in estimated power consumption for mineral processing and for input into the Scoping Study.

Subsamples from both rougher and cleaner tailings streams from both locked cycle tests have been combined and sent for thickening test work, geotechnical test work and chemical analysis. This program will assist with establishing tailings storage facility design parameters.

Beyond that, future metallurgical test work will commence after the Scoping Study and will focus on providing more variability data for both comminution and flotation to improve resolution of the geo-metallurgical domain modelling at Briggs, along with optimisation and improvements to the flowsheet design.

Scoping Study Progress

The results of this metallurgical test work campaign will be used as inputs into the Scoping Study to evaluate the economics of mining at Briggs. In addition to the metallurgical input, an update to the MRE is currently being prepared and is expected to be released in the coming weeks.

The Scoping Study is expected to be completed in mid-2025.

Authorised by Managing Director of Canterbury Resources Limited.

For further information please contact:

Grant Craighead

Managing Director

M: +61 409 900 570

E: gcraighead@canterburyresources.com.au

Michael Kotowicz

Investor Relations Manager

M: +61 416 233 145

E: admin@canterburyresources.com.au

COMPETENT PERSONS STATEMENT

The Australasian Code for Reporting of Exploration Results, Mineral Resources and Ore Reserves (the 'JORC Code') sets out minimum standards, recommendations and guidelines for Public Reporting in Australasia of Exploration Results, Mineral Resources and Ore Reserves. The information contained in this announcement has been presented in accordance with the JORC Code (2012 edition) and references to "Measured, Indicated and Inferred Resources" are to those terms as defined in the JORC Code (2012 edition).

The technical information in this report which relates to Exploration Results and Exploration Targets is based on information compiled by Mr Michael Erceg, MAIG RPGeo. Mr Erceg is an Executive Director and shareholder of Canterbury Resources and has sufficient experience relevant to the style of mineralisation and type of deposit under consideration and to the activity he is undertaking to qualify as a Competent Person as defined in the 2012 Edition of the "Australian Code of Reporting of Exploration Results, Mineral Resources and Ore Reserves". Mr Erceg consents to the inclusion in this report of the matters based on that information in the form and context in which it appears.

The information in this report that relates to the Estimation of Mineral Resources, has been prepared by Mr Geoff Reed, who is a Member of the Australasian Institute of Mining and Metallurgy, is a Consulting Geologist of Bluespoint Mining Services (BMS) and is a shareholder of Canterbury Resources. Mr Reed has sufficient experience that is relevant to the style of mineralisation and type of deposit under consideration and to the activity being undertaken to qualify as a Competent Person as defined in the 2012 Edition of the "Australasian Code for Reporting of Exploration Results, Mineral Resources and Ore Reserves". Mr Reed consents to the inclusion in the report of the matters based on his information in the form and context in which it appears.

The information in this report that relates to Metallurgical Test Work Results is based on information compiled by Mr Ivan Hunter. Mr Hunter is a member of the Australian Institute of Mining and Metallurgy and is a Consulting Metallurgist at Scott Dalley Francks Pty Ltd.

Mr Hunter has sufficient experience which is relevant to the style of mineralisation and type of deposits under consideration and to the activity being undertaken to qualify as a Competent Person as defined in the 2012 Edition of the 'Australasian Code for Reporting of Exploration Results, Mineral Resources and Ore Reserves'. Mr Hunter consents to the inclusion in the report of the matters based on his information in the form and context in which it appears.

The Company confirms that it is not aware of any new information or data that materially affects the information included in the original market announcements and that all material assumptions and technical parameters underpinning the Estimate of Mineral Resources continue to apply and have not materially changed.

DISCLAIMER

Forward-looking statements are statements that are not historical facts. Words such as "expect(s)", "feel(s)", "believe(s)", "will", "may", "anticipate(s)", "potential(s)" and similar expressions are intended to identify forward-looking statements. These statements include, but are not limited to statements regarding future production, resources or reserves and exploration results. All such statements are subject to certain risks and uncertainties, many of which are difficult to predict and generally beyond the control of the Company, that could cause actual results to differ materially from those expressed in, or implied or projected by, the forward-looking information and statements. These risks and uncertainties include, but are not limited to: (i) those relating to the interpretation of drill results, the geology, grade and continuity of mineral deposits and conclusions of economic evaluations, (ii) risks relating to possible variations in reserves, grade, planned mining dilution and ore loss, or recovery rates and changes in project parameters as plans continue to be refined, (iii) the potential for delays in exploration or development activities or the completion of feasibility studies, (iv) risks related to commodity price and foreign exchange rate fluctuations, (v) risks related to failure to obtain adequate financing on a timely basis and on acceptable terms or delays in obtaining governmental approvals or in the completion of development or construction activities, and (vi) other risks and uncertainties related to the Company's prospects, properties and business strategy. Our audience is cautioned not to place undue reliance on these forward-looking statements that speak only as of the date hereof, and we do not undertake any obligation to revise and disseminate forward-looking statements to reflect events or circumstances after the date hereof, or to reflect the occurrence of or non-occurrence of any events. The term "Canterbury" must be loosely construed to include the subsidiaries of Canterbury Resources Limited where relevant.

ABOUT CANTERBURY RESOURCES LIMITED

Canterbury Resources Limited (ASX: CBY) is an ASX-listed resource company focused on creating shareholder wealth by generating and exploring potential Tier-1 copper-gold projects in the southwest Pacific.

It has a strong portfolio of projects in Australia and Papua New Guinea that are prospective for porphyry copper-gold and epithermal gold-silver deposits.

The Company is managed by an experienced team of resource professionals, with a strong track record of exploration success and mine development in the region. It periodically forms partnerships with other resource companies to defray risk and cost. Joint venture partners currently comprise Rio Tinto, Alma Metals and Syndicate Minerals.

Canterbury’s portfolio includes multiple projects that are at the advanced exploration phase. Each project provides potential for the discovery and/or delineation of large-scale copper ±gold ±molybdenum resources.



Current Mineral Resource Estimates² (100% basis) are:

Project	Deposit	Category	Cut-off	Mt	Au (g/t)	Cu (%)	Au (Moz)	Cu (kt)
Wamum	Idzan Creek	Inferred	0.2g/t Au	137.3	0.53	0.24	2.34	327
Wamum	Wamum Creek	Inferred	0.2% Cu	141.5	0.18	0.31	0.82	435
Briggs	Briggs	Inferred	0.2% Cu	415.0	-	0.25	-	1,038
Total							3.16	1,800

² CBY ASX releases 26 November 2020 and 6 July 2023.

APPENDIX 1 - JORC TABLES
 JORC Code, 2012 Edition – Table 1

Section 1 Sampling Techniques and Data

(Criteria in this section apply to all succeeding sections.)

Criteria	JORC Code explanation	Commentary
Sampling techniques	<ul style="list-style-type: none"> Nature and quality of sampling (e.g. cut channels, random chips, or specific specialised industry standard measurement tools appropriate to the minerals under investigation, such as down hole gamma sondes, or handheld XRF instruments, etc). These examples should not be taken as limiting the broad meaning of sampling. Include reference to measures taken to ensure sample representivity and the appropriate calibration of any measurement tools or systems used. Aspects of the determination of mineralisation that are Material to the Public Report. In cases where ‘industry standard’ work has been done this would be relatively simple (e.g. ‘reverse circulation drilling was used to obtain 1 m samples from which 3 kg was pulverised to produce a 30 g charge for fire assay’). In other cases, more explanation may be required, such as where there is coarse gold that has inherent sampling problems. Unusual commodities or mineralisation types (e.g. submarine nodules) may warrant disclosure of detailed information. 	<ul style="list-style-type: none"> Drill core was photographed and logged by a company geologist to industry standard. Sample intervals were nominally 2m. Whole core was transported to ALS Laboratories in Zillmere, Brisbane for cutting, sample preparation and assay. Half-core for metallurgical test work was collected by Alma geologists and sent by courier to Aurelia Metallurgy in Midvale, Western Australia. Sample intervals for metallurgical test work were selected on the basis of assay grades and logged geology to produce variability and master composites which reflect the average grade and spatial distribution across the Briggs deposit.
Drilling techniques	<ul style="list-style-type: none"> Drill type (e.g. core, reverse circulation, open-hole hammer, rotary air blast, auger, Bangka, sonic, etc) and details (e.g. core diameter, triple or standard tube, depth of diamond tails, face-sampling bit or other type, whether core is oriented and if so, by what method, etc). 	<ul style="list-style-type: none"> Diamond drilling is HQ3 (61.1mm diameter) from surface.
Sample recovery	<ul style="list-style-type: none"> Method of recording and assessing core and chip sample recoveries and results assessed. Measures taken to maximise sample recovery and ensure representative nature of the samples. Whether a relationship exists between sample recovery and grade and whether sample bias may have occurred due to preferential loss/gain of fine/coarse material. 	<ul style="list-style-type: none"> Core recovery determined during logging by reference to drillers marker blocks. Core recovery generally exceeded 95%.
Logging	<ul style="list-style-type: none"> Whether core and chip samples have been geologically and geotechnically logged to a level of detail to support appropriate Mineral Resource estimation, mining studies and metallurgical studies. Whether logging is qualitative or quantitative in nature. Core (or costean, channel, etc) photography. The total length and percentage of the relevant intersections logged. 	<ul style="list-style-type: none"> All drill core is photographed and logged to industry standard.
Sub-sampling techniques and sample preparation	<ul style="list-style-type: none"> If core, whether cut or sawn and whether quarter, half or all core taken. If non-core, whether riffled, tube sampled, rotary split, etc and whether sampled wet or dry. For all sample types, the nature, quality and appropriateness of the sample preparation technique. 	<ul style="list-style-type: none"> Core has been cut longitudinally using an Almonte type core saw. Samples are nominally on 2m intervals with ½ core being sampled. Sample were fine crushed, rotary split, 250g pulverized (ALS prep code PREP31-AY). ¼ core duplicates were taken every 20

Criteria	JORC Code explanation	Commentary
	<ul style="list-style-type: none"> Quality control procedures adopted for all sub-sampling stages to maximise representivity of samples. Measures taken to ensure that the sampling is representative of the in-situ material collected, including for instance results for field duplicate/second-half sampling. Whether sample sizes are appropriate to the grain size of the material being sampled. 	<ul style="list-style-type: none"> samples. Quality control was assessed as adequate for all batches. Sample preparation for metallurgical test work is by industry standard for the type of test conducted. Metallurgical sample intervals were selected to represent the average grades, lithological variability and spatial/geographical location throughout the deposit to a standard appropriate for Scoping Study level. Metallurgical composite sample sizes were based on the volume required to provide sufficient sample for the test work.
<p>Quality of assay data and laboratory tests</p>	<ul style="list-style-type: none"> The nature, quality and appropriateness of the assaying and laboratory procedures used and whether the technique is considered partial or total. For geophysical tools, spectrometers, handheld XRF instruments, etc, the parameters used in determining the analysis including instrument make and model, reading times, calibrations factors applied and their derivation, etc. Nature of quality control procedures adopted (e.g. standards, blanks, duplicates, external laboratory checks) and whether acceptable levels of accuracy (i.e. lack of bias) and precision have been established. 	<ul style="list-style-type: none"> Sample intervals for metallurgical test work were selected on the basis of weighted average assay grade for a given interval from which QA/QC procedures were already in place. No abnormal QA/QC was reported for any of the drilling intervals from which the composites were created.
<p>Verification of sampling and assaying</p>	<ul style="list-style-type: none"> The verification of significant intersections by either independent or alternative company personnel. The use of twinned holes. Documentation of primary data, data entry procedures, data verification, data storage (physical and electronic) protocols. Discuss any adjustment to assay data. 	<ul style="list-style-type: none"> Drill hole 24BRD0032 is a scissor hole for 24BRD0026, and 24BRD0034 is a scissor hole for 24BRD0030. Assay results or 24BRD0032 and 24BRD0034 show reasonable grade continuity between the scissor holes to the extent expected for this style of porphyry mineralisation. Data is stored electronically in a database managed by a data administrator No adjustments are made to any assays.
<p>Location of data points</p>	<ul style="list-style-type: none"> Accuracy and quality of surveys used to locate drill holes (collar and down-hole surveys), trenches, mine workings and other locations used in Mineral Resource estimation. Specification of the grid system used. Quality and adequacy of topographic control. 	<ul style="list-style-type: none"> Drill collar coordinates have been determined by Differential GPS survey. Down hole survey data was collected systematically at approximately 30m intervals using an Axis Champ Magshot 2310 digital directional survey tool. Grid references are provided in GDA94 MGA Zone 56 Topographical control has been obtained by Lidar survey
<p>Data spacing and distribution</p>	<ul style="list-style-type: none"> Data spacing for reporting of Exploration Results. Whether the data spacing, and distribution is sufficient to establish the degree of geological and grade continuity appropriate for the Mineral Resource and Ore Reserve estimation procedure(s) and classifications applied. Whether sample compositing has been applied. 	<ul style="list-style-type: none"> Holes 24BRD0026-34 are infill holes into the Briggs Central Inferred Resource. The data spacing, and distribution of drilling to date is sufficient to establish a degree of geological and grade continuity appropriate for Mineral Resource estimation and will be used to update the MRE in Q1, 2025. Metallurgical sample intervals were selected to represent the average grades, lithological variability and spatial location throughout the deposit to a standard appropriate for Scoping Study level.

Criteria	JORC Code explanation	Commentary
<p>Orientation of data in relation to geological structure</p>	<ul style="list-style-type: none"> Whether the orientation of sampling achieves unbiased sampling of possible structures and the extent to which this is known, considering the deposit type. If the relationship between the drilling orientation and the orientation of key mineralised structures is considered to have introduced a sampling bias, this should be assessed and reported if material. 	<ul style="list-style-type: none"> Drill holes 24BRD0026 to 24BRD0034 were drilled to test for potential higher-grade mineralisation straddling the geological contact between porphyritic granodiorite intrusions and the hosting volcanic sediments, and to provide infill drilling within the previously defined inferred resource (ASX release dated 6 July 2023). Minor historical drilling was undertaken into the Briggs Central Porphyry. Details are reported in CBY Replacement Prospectus 03/10/2018 and in ALM Release to ASX dated 18 August 2021. Drill holes were drilled between -50 and -90deg in mineralisation that has a sub-vertical geological grain. Minor sampling bias may have been introduced with sub-vertical holes but due to the overall stockwork and disseminated nature of the mineralisation any bias is not considered material.
<p>Sample security</p>	<ul style="list-style-type: none"> The measures taken to ensure sample security. 	<ul style="list-style-type: none"> Core is processed on site under the supervision of a company geologist. Whole core is palleted & strapped for transport by commercial carrier to ALS Zillmere preparation facility in Brisbane. Core trays containing half-core for metallurgical test work were palleted and strapped for transport by commercial carrier to Aurelia Metallurgy in Midvale, WA.
<p>Audits or reviews</p>	<ul style="list-style-type: none"> The results of any audits or reviews of sampling techniques and data. 	<ul style="list-style-type: none"> No audits or reviews of sampling techniques and data undertaken to date.

Section 2 Reporting of Exploration Results
 (Criteria listed in the preceding section also apply to this section.)

Criteria	JORC Code explanation	Commentary
<p>Mineral tenement and land tenure status</p>	<ul style="list-style-type: none"> Type, reference name/number, location and ownership including agreements or material issues with third parties such as joint ventures, partnerships, overriding royalties, native title interests, historical sites, wilderness or national park and environmental settings. The security of the tenure held at the time of reporting along with any known impediments to obtaining a license to operate in the area. 	<ul style="list-style-type: none"> EPM19198 (Briggs), EPM18504 (Mannersley), EPM28588 (Don River) and EPM27317 (Fig Tree), collectively “the Canterbury EPM’s” are located 50km west southwest of Gladstone in central Queensland. EPM 27894 (Ulam Range) and EPM27956 (Rocky Point) were recently acquired by Alma Metals as part of the JV with Canterbury and are adjacent to the Canterbury EPM’s. EPM19198, EPM18504, EPM28588 and EPM27317 are 51% owned by Alma Metals Ltd and 49% owned by Canterbury Resources Limited (ASX: CBY). Rio Tinto holds a 1.5% NSR interest in EPM19198 and EPM 18504. In July 2021, Alma Metals committed to a joint venture covering the four Canterbury EPM’s whereby it has the right to earn up to 70% joint venture interest by funding up to \$15.25M of assessment activity. The two EPM’s recently acquired by Alma Metals form part of the JV package. Alma Metals Ltd reached a 51% joint venture interest in the tenements in August 2024 and has commenced funding the final stage of the earn-in, under which a further \$10M must be spent on exploration and evaluation by 30 June 2031 for Alma to reach a 70% JV interest.
<p>Exploration done by other parties</p>	<ul style="list-style-type: none"> Acknowledgment and appraisal of exploration by other parties. 	<ul style="list-style-type: none"> Refer to ASX release from 18 August 2021 covering work by Noranda (1968-1972), Geopeko (early 1970s), Rio Tinto (2012-2016) and Canterbury Resources (2019-2022). A twelve-hole RC drilling program was completed by Alma Metals testing the Central, Northern and Southern porphyry prospects in 2021 (ASX announcement 18 February 2022). A four-hole core drilling program was completed by Alma Metals in May 2023. A nine-hole core drilling program was completed by Alma Metals in November 2023. The most recent drilling program comprised eleven core holes for a total of 2955.5m and was completed in December 2024.
<p>Geology</p>	<ul style="list-style-type: none"> Deposit type, geological setting and style of mineralisation. 	<ul style="list-style-type: none"> At Briggs, a granodiorite porphyry stock (GDP) with dimensions in excess of 500m by 200m has been drilled to a depth of ~500m at the Central Porphyry prospect. This stock has intruded volcanoclastic sediments with a zone of hornfels along the contact. The Central Porphyry is one of at least three intrusive centers comprising the Briggs Cu ± Mo porphyry prospect. Intrusive outcrop, soil geochemistry and magnetics (depressed susceptibility) indicate the existence of at least two other centers, referred to as the Northern and Southern Porphyry, that have been comparatively poorly explored. Copper as chalcopyrite with accessory molybdenum as molybdenite dominate the potentially economic minerals. A relatively thin oxide zone blankets the deposit. The GDP is

		<p>pervasively altered to potassic style alteration (biotite – k-feldspar) overprinted by phyllic (sericite) alteration. Distribution of copper grade is relatively consistent and predictable within the GDP and in the contact hornfels.</p> <ul style="list-style-type: none"> • Banded silica bodies with UST textures have been observed at Northern, Central and Southern Porphyries. Similar quartz zones have been intersected in drilling. These siliceous bodies appear to be sub-vertical and dyke-like in character and may have formed at contacts between intrusive phases. The silica bodies are generally well mineralised. It is suggested that they represent emanations from a fertile parent intrusive at depth. • Alma Metals’ interpretation is that copper deposition at Briggs is multi-stage, with an earlier event associated with quartz - k-feldspar - chalcopyrite - molybdenite veins and a later cross-cutting event dominated by quartz - sericite - chalcopyrite. The earlier event appears related to the intrusion of the granodiorite porphyry and potassic alteration, while the later event is thought to be related to phyllic alteration and an as-yet undiscovered intrusive at depth. • The earlier copper event is predominantly hosted within the granodiorite porphyry and the latter along the contact between the intrusive stock and volcanoclastic sediments, probably taking advantage of permeability afforded along intrusive contacts and faults with deposition controlled by brittle fracture and reaction with Fe-rich host rocks.
<p>Drill hole Information</p>	<ul style="list-style-type: none"> • A summary of all information material to the understanding of the exploration results including a tabulation of the following information for all Material drill holes: <ul style="list-style-type: none"> ○ easting and northing of the drill hole collar ○ elevation or RL (Reduced Level – elevation above sea level in metres) of the drill hole collar ○ dip and azimuth of the hole ○ down hole length and interception depth ○ hole length. • If the exclusion of this information is justified on the basis that the information is not Material and this exclusion does not detract from the understanding of the report, the Competent Person should clearly explain why this is the case. 	<ul style="list-style-type: none"> • Sample intervals and drill hole locations for the material making up the metallurgical test work variability composites and master composites are provided in the body of this report.
<p>Data aggregation methods</p>	<ul style="list-style-type: none"> • In reporting Exploration Results, weighting averaging techniques, maximum and/or minimum grade truncations (eg cutting of high grades) and cut-off grades are usually Material and should be stated. • Where aggregate intercepts incorporate short lengths of high-grade results and longer lengths of low-grade results, the procedure used for such aggregation should be stated and some typical examples of such aggregations should be shown in detail. • The assumptions used for any reporting of metal equivalent values should be clearly stated. 	<ul style="list-style-type: none"> • Significant intercepts of Cu and Mo are reported at 0.1%Cu, 0.2%Cu and 0.3% Cu cut-offs. • Maximum internal dilution is 4m and minimum significant interval is 10m.

<p>Relationship between mineralisation widths and intercept lengths</p>	<ul style="list-style-type: none"> • These relationships are particularly important in the reporting of Exploration Results. • If the geometry of the mineralisation with respect to the drill hole angle is known, its nature should be reported. • If it is not known and only the down hole lengths are reported, there should be a clear statement to this effect (eg 'down hole length, true width not known'). 	<ul style="list-style-type: none"> • Drill holes are predominantly designed to test across the dominant NW-SE structural grain.
<p>Diagrams</p>	<ul style="list-style-type: none"> • Appropriate maps and sections (with scales) and tabulations of intercepts should be included for any significant discovery being reported. These should include but not be limited to a plan view of drill hole collar locations and appropriate sectional views. 	<ul style="list-style-type: none"> • See figures and tables in body of the report published on 30 January 2025.
<p>Balanced reporting</p>	<ul style="list-style-type: none"> • Where comprehensive reporting of all Exploration Results is not practicable, representative reporting of both low and high grades and/or widths should be practiced to avoid misleading reporting of Exploration Results. 	<ul style="list-style-type: none"> • Comprehensive reporting of all exploration results has been practiced.
<p>Other substantive exploration data</p>	<ul style="list-style-type: none"> • Other exploration data, if meaningful and material, should be reported including (but not limited to): geological observations; geophysical survey results; geochemical survey results; bulk samples – size and method of treatment; metallurgical test results; bulk density, groundwater, geotechnical and rock characteristics; potential deleterious or contaminating substances. 	<ul style="list-style-type: none"> • All material exploration results have been reported.
<p>Further work</p>	<ul style="list-style-type: none"> • The nature and scale of planned further work (eg tests for lateral extensions or depth extensions or large-scale step-out drilling). • Diagrams clearly highlighting the areas of possible extensions, including the main geological interpretations and future drilling areas, provided this information is not commercially sensitive. 	<ul style="list-style-type: none"> • Metallurgical test work programs are continuing, including coarse particle flotation test work. Results will be combined with the information in this report to finalise a preliminary processing flowsheet for use in scoping study evaluation of the Briggs copper deposit. • Further drilling is proposed in 2025 following interpretation of results from the 2024 program. • Further metallurgical test work programs to Prefeasibility Study standard will be undertaken in future to produce a more accurate geo-metallurgical domain model and refine the process flowsheet.