



9 April 2025

CDC hosts Melbourne data centre site visit

CDC management hosted a briefing today as part of a site visit to its new Brooklyn campus in Melbourne, which became operational in 2024. A copy of the presentation from CDC CEO Greg Boorer is attached.

Brooklyn is CDC's first campus in Melbourne and features a state-of-the-art, highly secure data centre with high-speed interconnectivity between regions. Operational since 2024, the site adds significant high-density capacity to CDC's platform.

Complementing Brooklyn, CDC's Laverton campus - construction of which commenced in February 2025 - will further expand CDC's presence in Victoria. CDC currently has a development plan for bringing total capacity in the state to over 785MW once fully developed.

Enquiries should be directed to:

Mark Flesher
Investor Relations
Email: mark.flesher@infratil.com

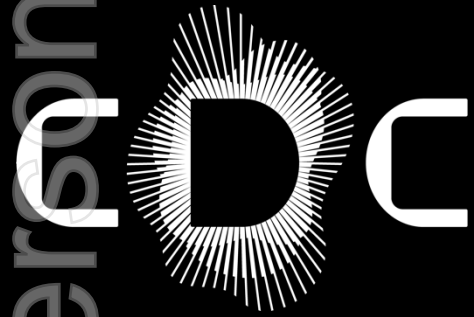
Authorised for release by:

Andrew Carroll
Infratil Chief Financial Officer

Infratil Investor Day Presentation

9 April 2025

Greg Boorer
Founder and Chief Executive Officer



Progress.
Secured.



Important notice and disclaimer

Material contained herein is intended to be general background information on CDC, its related bodies corporate (as defined in the *Corporations Act 2001*) and its activities as at the date of this document. Material has been provided in summary form, is not necessarily complete, is not intended to be relied upon as advice or recommendations and does not consider a recipient's particular objectives, financial situation or needs. Each recipient of this presentation should: (i) make its own enquiries and investigations regarding all information in this presentation including (but not limited to) the assumptions, uncertainties and contingencies which may affect future operations of CDC and the impact that different future outcomes may have on CDC; (ii) seek legal, accounting and taxation advice appropriate to their jurisdiction; and (iii) note that past performance, including past financial performance and pro forma historical information in this presentation, is given for illustrative purposes only and cannot be relied upon as an indicator of (and provides no guidance as to) future performance.

Information set forth in this presentation may contain "forward-looking information", including "future oriented financial information" and "financial outlook", under applicable securities laws (collectively referred to herein as "forward-looking statements"). Except for statements of historical fact, information contained herein constitutes forward-looking statements and may include (but is not limited to): (i) CDC's projected financial performance; (ii) the expected development of CDC's business, projects and joint ventures; (iii) execution of CDC's vision and growth strategy; (iv) sources and availability of third-party financing for CDC's projects; (v) completion of CDC projects that are currently underway, in development or otherwise under consideration; (vi) renewal of CDC's current customer, supplier and other material agreements; and (vii) future liquidity, working capital, and capital requirements. Forward-looking statements are provided to allow recipients of this presentation the opportunity to understand CDC's beliefs and opinions, so that such beliefs and opinions may be used by recipients as one factor in performing evaluation of financing opportunities.

Although forward-looking statements contained in this presentation are based on what CDC believes to be reasonable assumptions, there can be no assurance that forward-looking statements will prove to be accurate, as actual results and future events could differ materially from those anticipated in such statements. Recipients of this presentation acknowledge and accept that future results may be affected by a range of variables which could cause outcomes or trends to differ materially, including (but not limited to): (i) price fluctuations; (ii) actual demand; (iii) environmental factors and risks; (iv) development progress; (v) operating results; (vi) engineering estimates; (vii) loss of market; (viii) industry competition; (ix) geopolitical risks, legislative, fiscal and regulatory developments; (x) economic and financial markets conditions; (xi) approvals; and (xii) cost estimate.

All trademarks, logos and brand names are the property of their respective owners. Use of these names, trademarks and brands does not imply endorsement.

Agenda

04 Introduction

07 Achievements

18 Growth

24 Questions



Securing progress in the age of AI

Data centres



22

Total

14

Operational

8

Under construction

Locations



Nine campuses across our operating regions:

- Canberra
- Sydney
- Melbourne
- Auckland

High density



+400kW

Track record of high and ultra high density deployments

Capacity (MW)



2454

Total

318

Operating capacity

382

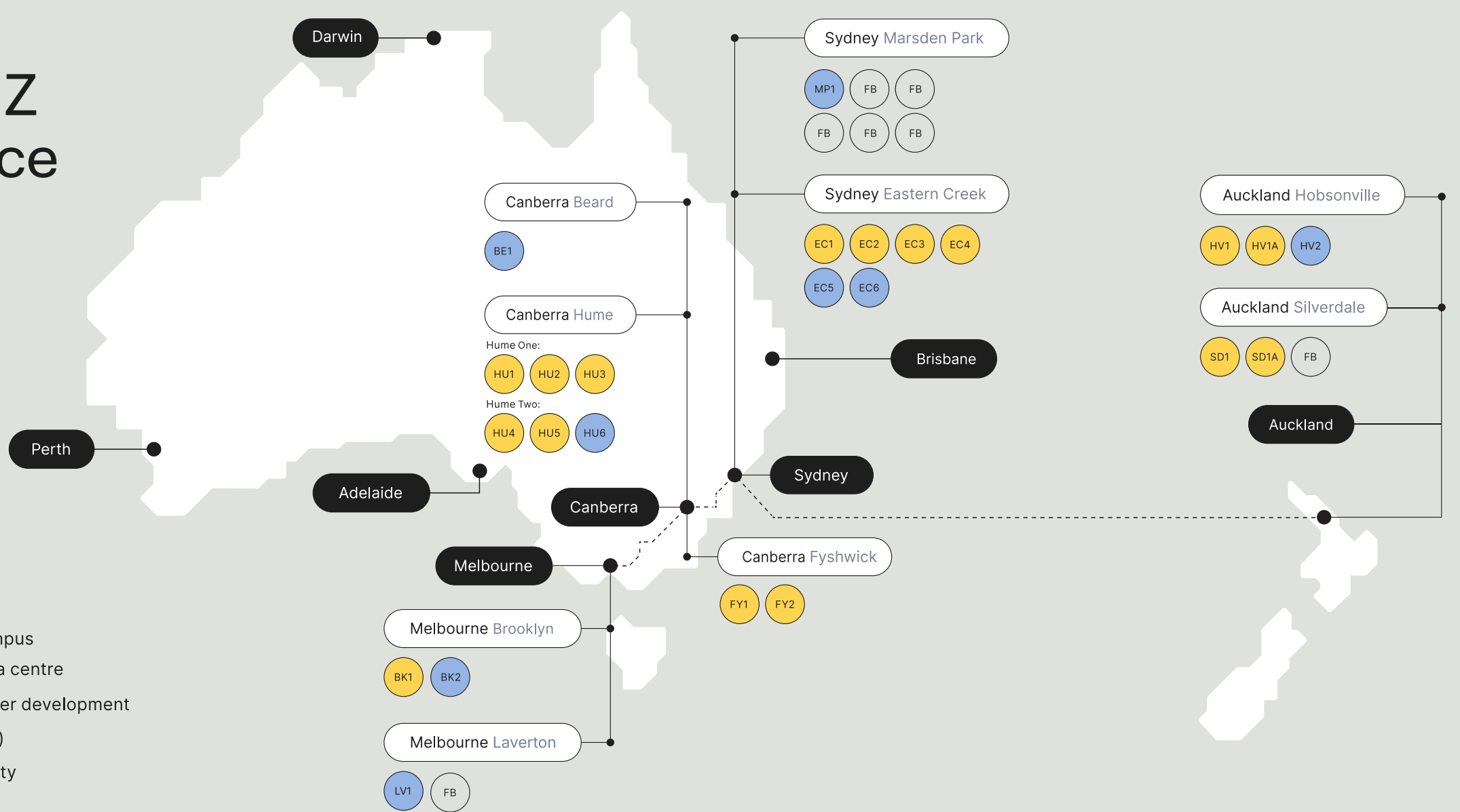
Under construction capacity

1754

Future build capacity

Our ANZ Presence

Internal use only





1

Security

3

Availability

2

Optionality

4

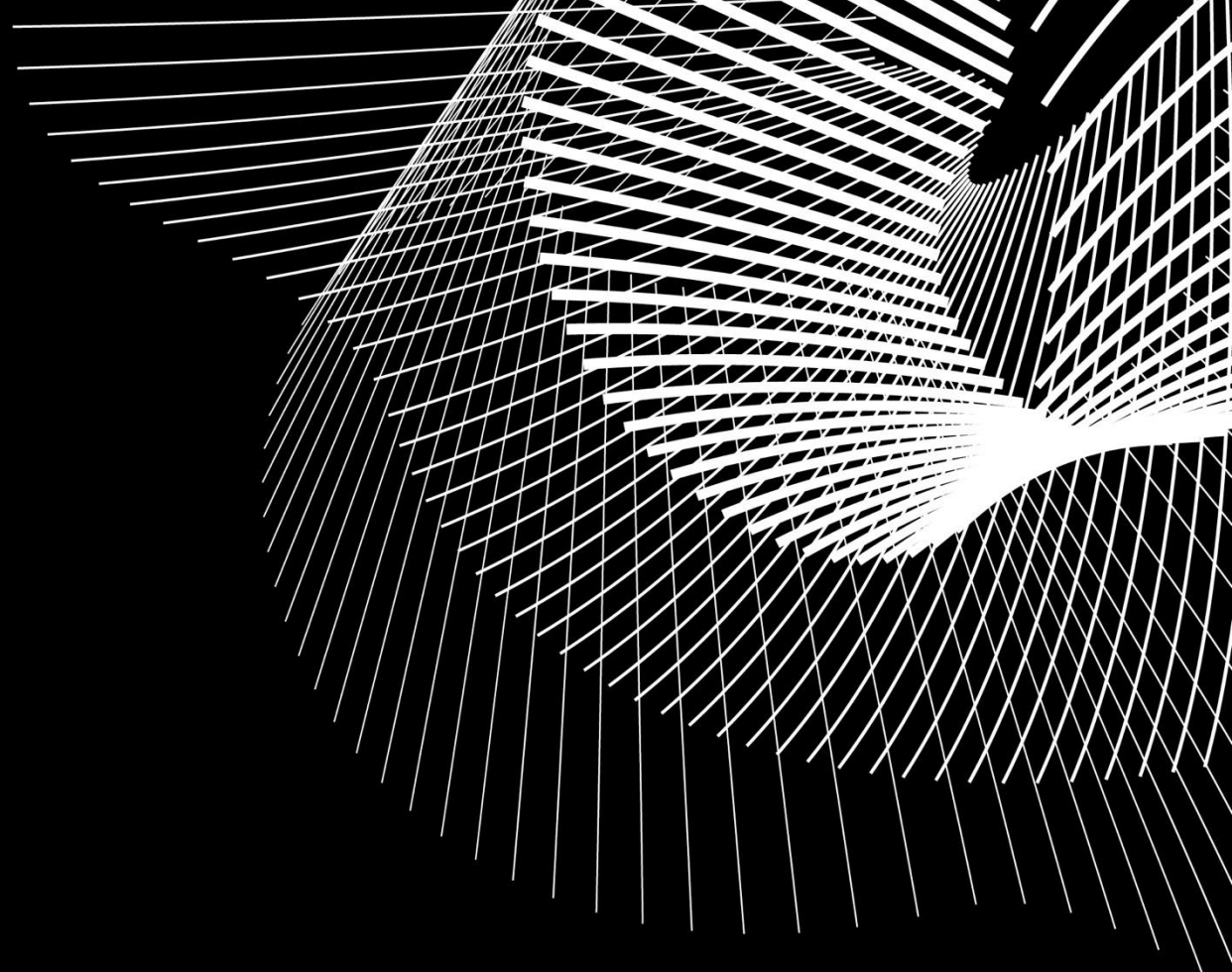
Interconnection

5

Sustainability

ersonal use only

Achievements

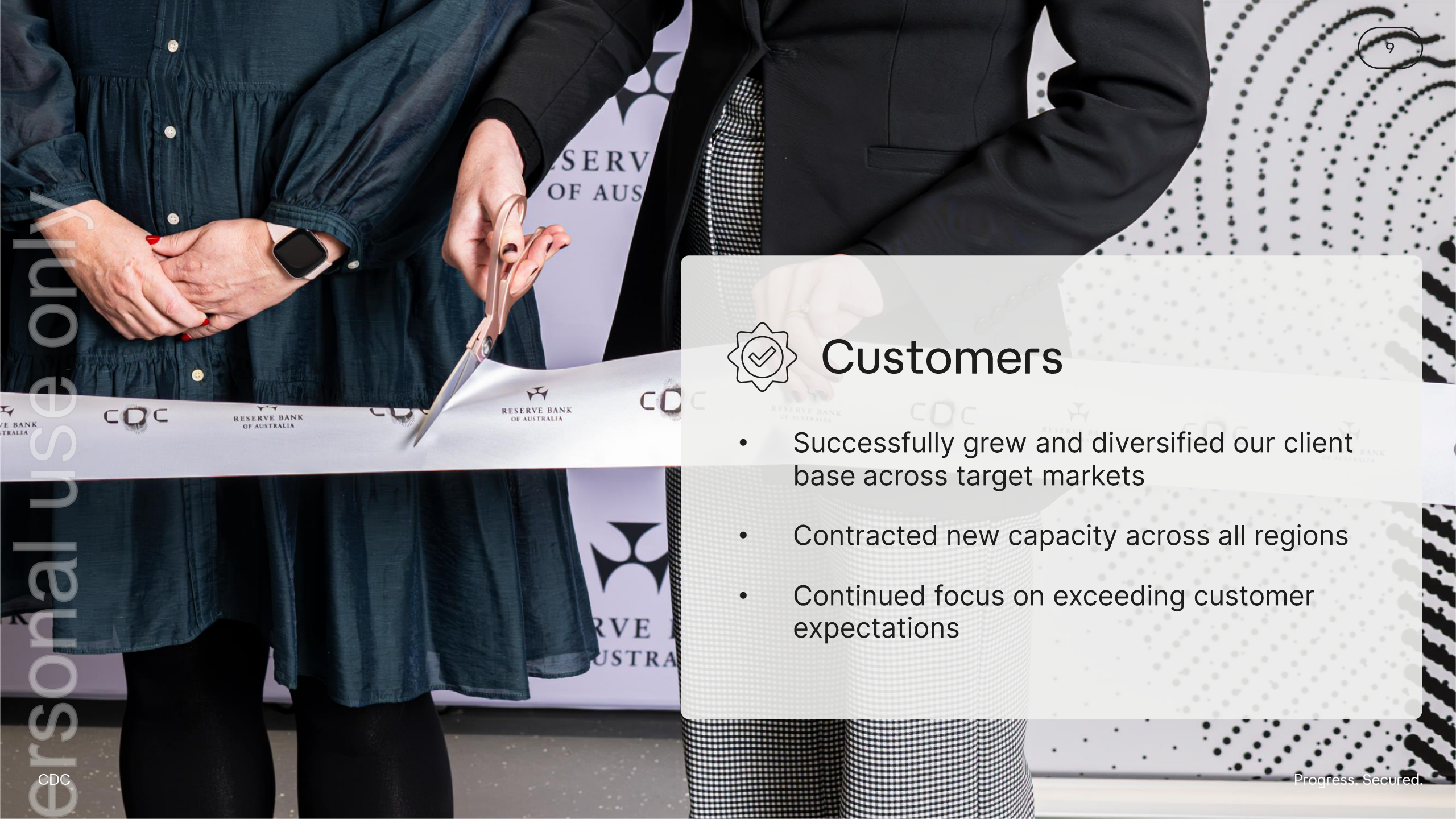




CDC Growth in 2024 - 2025

- Completed expansion projects in NZ
- Began construction at the Marsden Park Campus in NSW
- Commenced work at the Laverton Campus in VIC

ersonal use only



Customers

- Successfully grew and diversified our client base across target markets
- Contracted new capacity across all regions
- Continued focus on exceeding customer expectations



People

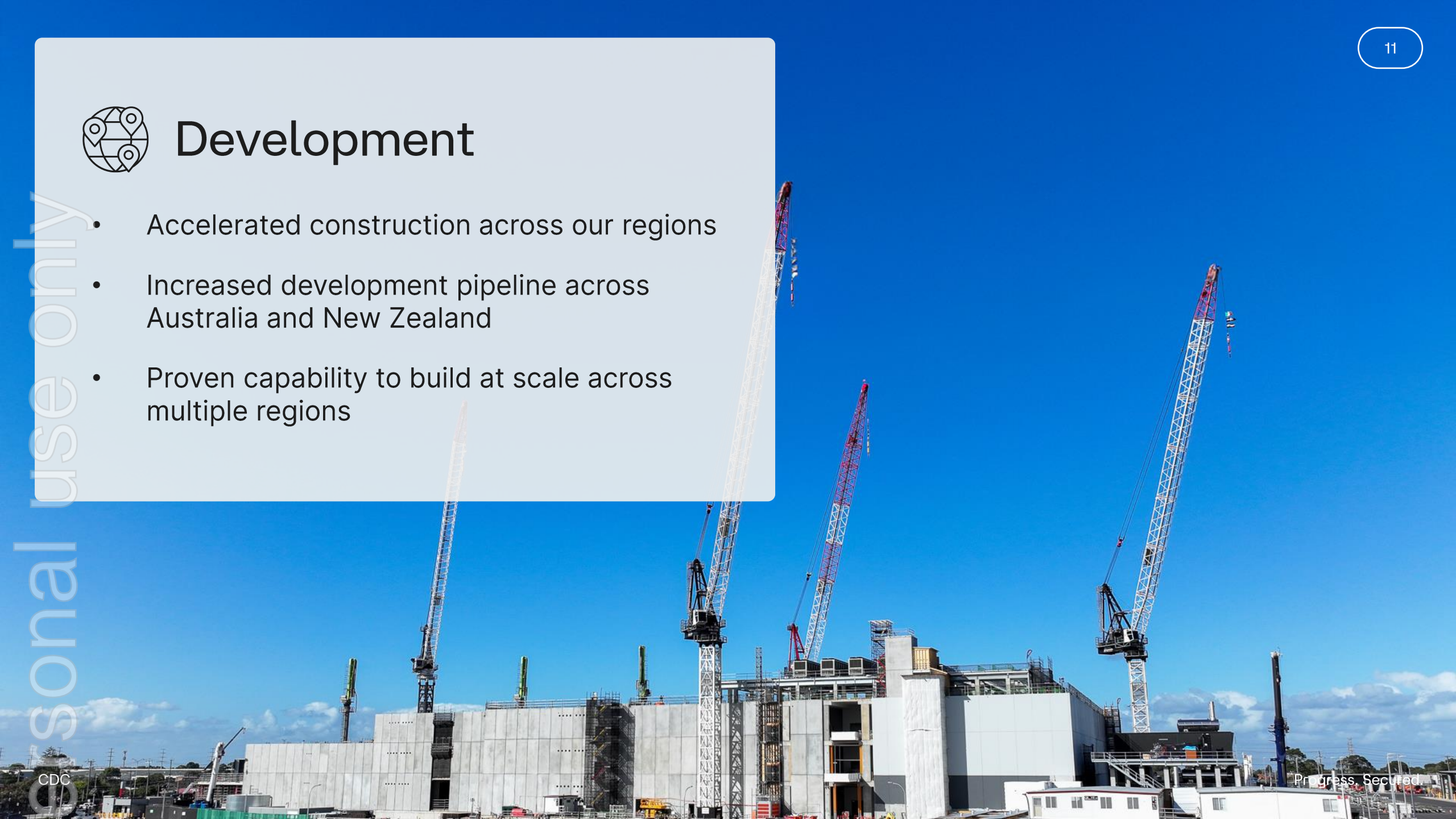
- Continued to foster a high-performance culture across all our regions
- Successfully scaling up and continuing to expand our high performing team
- Investing significantly in new capabilities and functions to enable continued growth



Development

- Accelerated construction across our regions
- Increased development pipeline across Australia and New Zealand
- Proven capability to build at scale across multiple regions

sonal use only



Track record of development at scale across multiple campuses and regions

only
us
real
2008
CDC

2008

Hume

CDC's first campus – Hume 1 becomes operational.



2015

Fyshwick

Fyshwick 1 becomes operational.



2018

Eastern Creek

CDC's first Sydney campus becomes operational.



2022

Silverdale

Silverdale becomes operational.



2022

Hobsonville

Hobsonville becomes operational.



2024

Beard

CDC's fourth Canberra campus begins construction.



2024

Brooklyn

CDC's first Melbourne campus becomes operational.



2024

Marsden Park

CDC's second Sydney campus begins construction.



2025

Laverton

Development begins at CDC's second Melbourne campus.



2008

CDC

2025

Progress. Secured.



Financial Performance

- Strong earnings growth trajectory
- Invested in growing capability across the business
- Continued prudent cost management
- Additional debt and equity raised, diversifying capital base and supporting continued growth



Shareholder Confidence

- Landmark deal signed to ensure continued support for growth and success
- The transaction puts the enterprise value of CDC at ~\$17bn



Sustainability

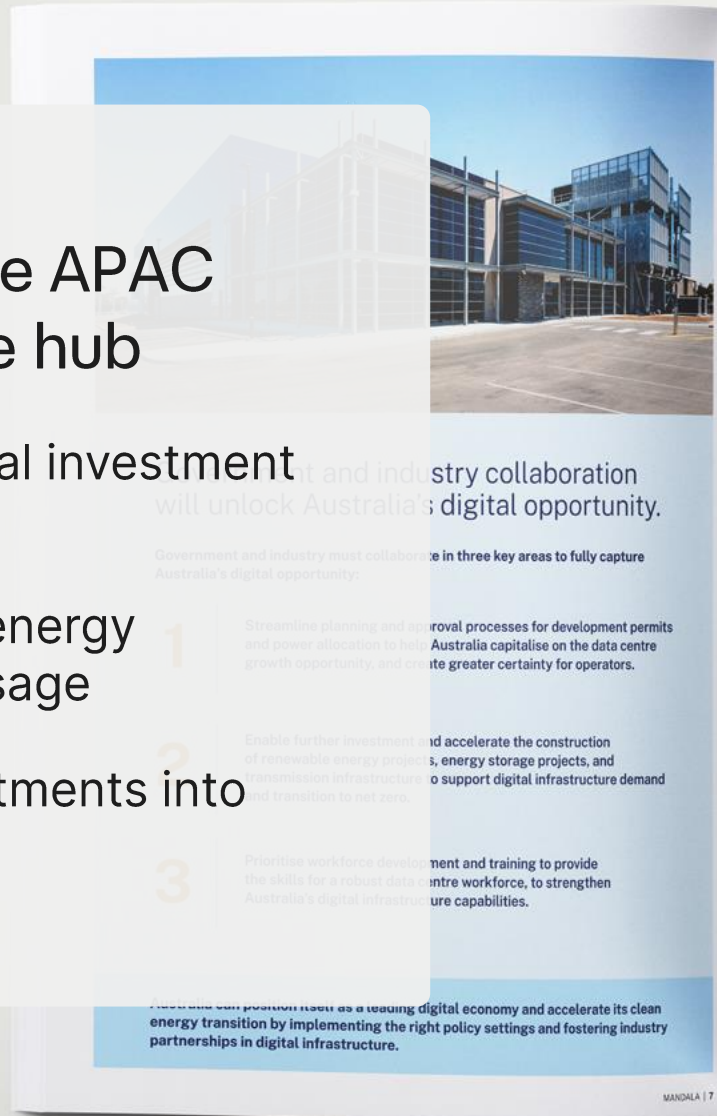
1. Toitū net carbonzero and Toitū enviromark diamond" certifications renewed in New Zealand
2. 100% renewable electricity by default since 1 January 2024
3. Water Usage Effectiveness (WUE) of 0.01
4. Zero Waste certification in NSW

ersonal use only



Unlocking ANZ as the APAC digital infrastructure hub

1. \$26+ billion worth of additional investment in data centres by 2030
2. Only 1% of Australia's annual energy consumption is data centre usage
3. Data Centres help drive investments into renewable energy



Figures sourced per 'Empowering Australia's Digital Future' report. Figures represent Australian data centre industry as a whole.



Leading on AI

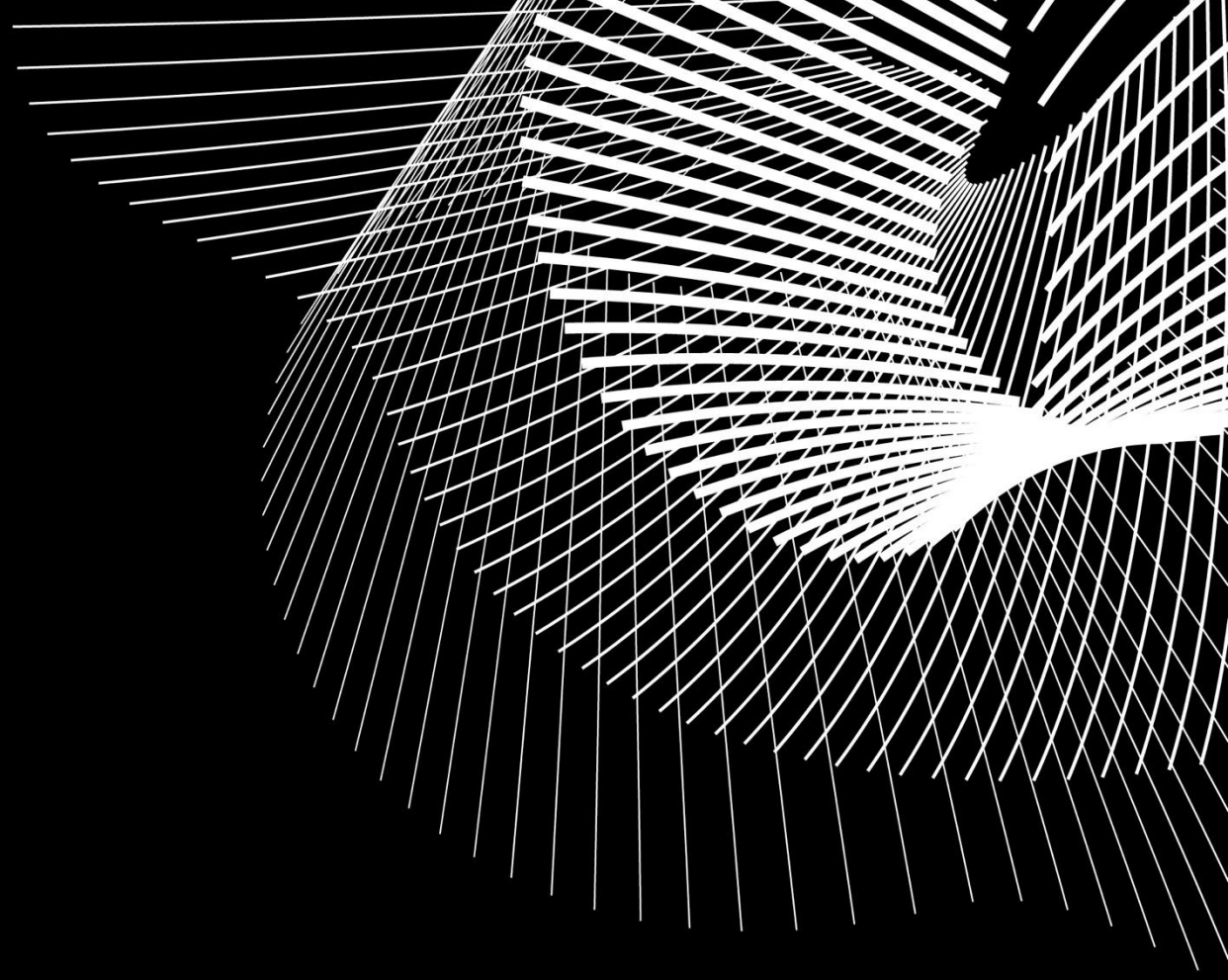
1. Track record of delivering flexible and tailored customer solutions
2. High power density designs
3. Deep experience with liquid cooling, supported by our closed loop liquid cooling system
4. Future proofed designed data centres



**PREFERRED
PARTNER**

CDC has achieved NVIDIA DGX-Ready Data Center certification across its Australian and New Zealand data centres

ersonal use only
Growth



Advancements in AI are driving significant demand growth for data centre capacity

Continued AI up-take across sectors

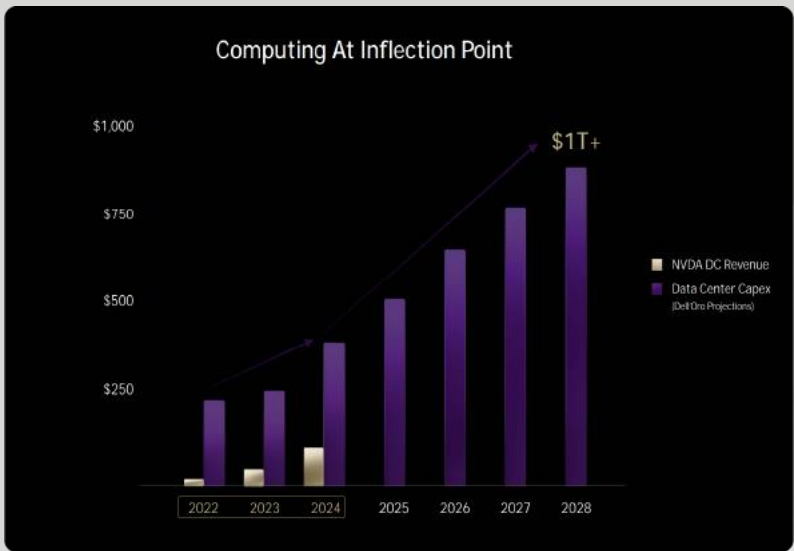
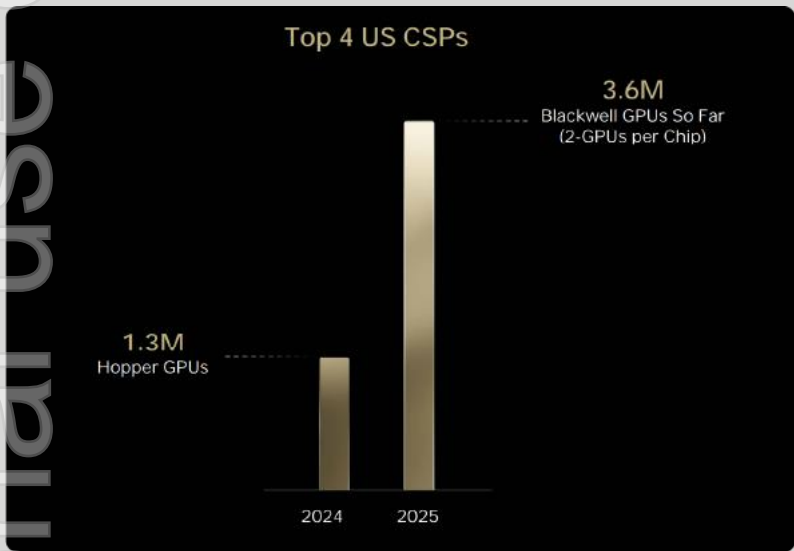
Creation of new AI use cases

More demand for AI infrastructure

More computation required due to shift to reasoning models for AI inference



Industry forecast an AI arms race, driving an unprecedented DC build-out

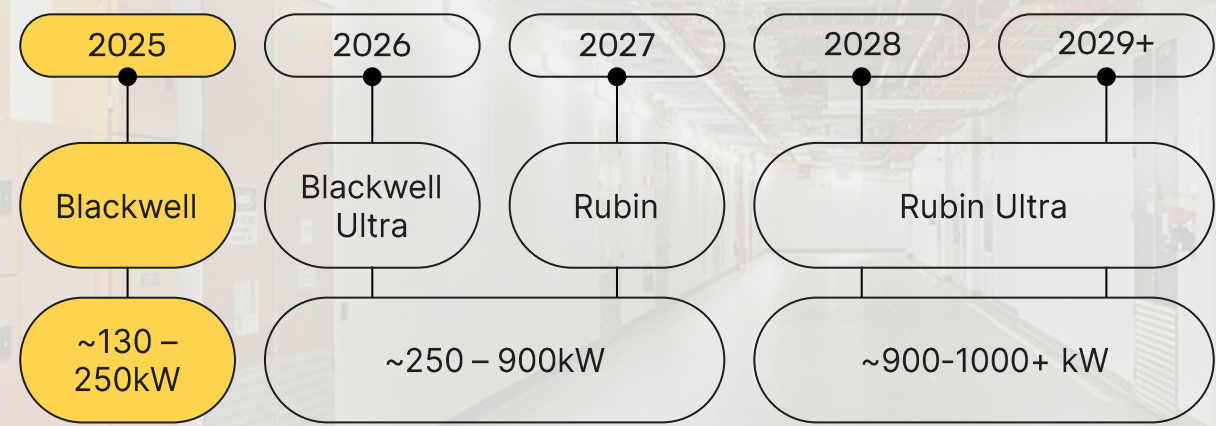


Personal use only

Rate of technology advancement accelerates

Illustrative NVIDIA AI GPU Roadmap

Anticipated AI GPU Peak Rack Density



ersonal use only

Diagram based on Vertiv diagram. Release dates indicative only. For exact release dates refer to NVIDIA guidance.

Strategic Position as Tier 1 AI Diffusion Nations¹

 CDC is in 2 of only 5 Tier 1 Nations within APAC

ersonal use only



18 Proposed Tier 1 Nations

[1] According to the US government's currently proposed AI Diffusion Framework.

Outlook

CDC's business model has very solid foundations, with four key strengths underpinning its strong financial performance. Profitable growth to continue as customers are onboarded into facilities in Australia and New Zealand and our increased capacity under construction is delivered to meet increasing customer demand.

1. Strong contracted capacity and pipeline underpinning an industry leading growth trajectory:
 - Over the next 2 years earnings expected to double with ~80% (average) already contracted
2. Significant liquidity and a strong capital structure enabling execution at scale
3. Efficiencies being delivered through larger scale campus developments
4. Investment in systems to support the CDC of tomorrow, today

ersonal use only

Questions

