

9 April 2025

ASX Market Announcements

FIELD EXPLORATION FOR RARE EARTH ELEMENTS COMMENCED IN QUEENSLAND

Ausmon Resources Limited (“Company”) is pleased to announce that it has commenced initial field-based exploration for Rare Earth Elements (“REE”) within EPM 29075 Turkey Hill in central Queensland.

The tenement covers an area of 320 km² within the Drummond Basin, 165 km SW of MacKay and 34 km NW of Moranbah accessible via the Peak Downs Highway then via all-weather unsealed roads.

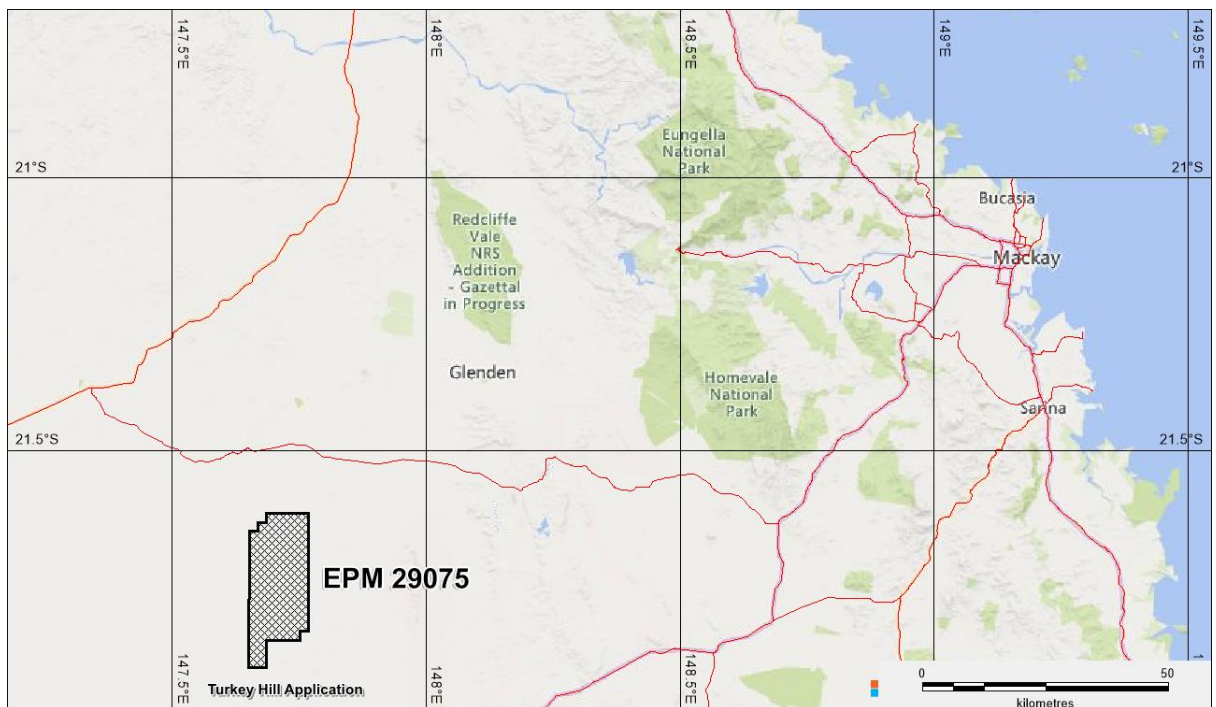


Figure 1: Location of Turkey Hill tenement

The Turkey Hill project is targeting a surficial layer of clays and iron-manganese-rich pisolites, and nodules forming part of a sequence of a tropically weathered sedimentary basin of Tertiary age. They are poorly consolidated and predominantly clay-rich, with minor amounts of fine sand and gravel. The basin overlies and is adjacent to alkali granitic rocks which have historically produced significant tin and tungsten and are enriched in rare earth elements. The granites are the possible source of the rare earths.

For personal use only

The REE mineralisation, if any, is likely concentrated in the weathered profile where it has dissolved from its primary mineral form, such as monazite, and then ionically bonded (adsorbed) or colloiddally bonded on to fine particles of aluminosilicate clays, including kaolinite).

The Company is conducting pXRF scanning of rock and soil samples with the Company's Vanta equipment. Selected samples will be sent to the ALS laboratory for assay. The results will be announced when received and will determine the nature and extent of future exploration activities in the area.

Competent Person Statement

The information in the report above that relates to Exploration Results, Exploration Targets and Mineral Resources is based on information compiled by Mr Mark Derriman, who is the Company's Chief Technical Officer and a member of The Australian Institute of Geoscientists (1566). Mr Mark Derriman has sufficient experience that is relevant to the style of mineralization and type of deposit under consideration and to the activities which he is undertaking to qualify as a Competent Person as defined in the 2012 Edition of the Australasian Code for Reporting of Exploration Results, Exploration Targets, Mineral Resources and Ore Reserves. Mr Mark Derriman consents to the inclusion in this report of matters based on his information in the form and context in which it appears.

Forward-Looking Statement

This document may include forward-looking statements. Forward-looking statements include, but are not limited to, statements concerning planned exploration program and other statements that are not historical facts. When used in this document, the words such as "could", "plan", "estimate", "expect", "intend", "may", "potential", "should" and similar expressions are forward-looking statements. Although Ausmon Resources Limited believes that its expectations reflected in these forward-looking statements are reasonable, such statements involve risks and uncertainties and no assurance can be given that actual results will be consistent with these forward-looking statements.

Authorised by :

Eric Sam Yue

Executive Director/Secretary

T : 02 9264 6988

E : office@ausmonresources.com.au