

Sipa to present at RRS Gather Round Conference, Adelaide

Sipa Resources Limited (ASX: SRI) ("Sipa" or "the Company") is pleased to provide an updated Corporate Presentation which will be delivered by the Company's Managing Director to the Resources Rising Stars Gather Round Conference in Adelaide (Thursday 10 April 2025).

Shareholders, investors, brokers, fund managers and media are welcome to register to attend the Conference either in-person or virtually:

In-Person Event

Adelaide Convention Centre, Hall E

www.rrsinvestor.com/events

Event Livestream - Virtual

https://www.bigmarker.com/series/rrs-gather-round-20251/series_summit

This announcement has been authorised for release by the Board of Sipa Resources Limited.

More Information:

Investors/Corporate:
Andrew Muir, Managing Director
Sipa Resources Limited
+61 (0) 8 9388 1551

reception@sipa.com.au

Media:
Nicholas Read
Read Corporate
+61 (0) 8 9388 1474

info@readcorporate.com.au

About Sipa

Sipa Resources Limited (ASX: SRI) is an Australian-based exploration company focused on the discovery of precious, base and specialty metal deposits, with projects located in Western Australia and South Australia.

Sipa is currently prioritising gold exploration on its recently acquired South Australian Projects in the Gawler Craton, and the Crown Project, located near Kalgoorlie in Western Australia.

The Company continues to review the current portfolio to ensure the optimal blend of assets to ensure efficient and cost-effective exploration.



**Advanced gold exploration projects close to million-ounce gold deposits
and mining infrastructure in South Australia and Western Australia**

RRS Gather Round Conference - Adelaide

GOLD FOCUS
-
**FIRST GOLD
DRILLING THIS
QUARTER**
-
**WELL
POSITIONED
PROJECTS**

DISCLAIMER

Summary of information: This presentation contains general, summary and background information about Sipa's activities as at the date of the presentation and should not be considered to be comprehensive or to comprise all the information that an investor should consider when making an investment decision. The information has not been independently verified. Sipa is not responsible for providing updated information.

Not financial product advice: This presentation is not a financial product, investment advice or a recommendation to acquire Sipa securities and has been prepared without taking into account the objectives, financial situation or needs of individuals. Before making an investment decision prospective investors should consider the appropriateness of the information having regard to their own objectives, financial situation and needs, and seek legal, taxation and financial advice appropriate to their jurisdiction and circumstances. Sipa is not licensed to provide financial product advice in respect of its securities or any other financial products. Cooling off rights do not apply to the acquisition of Sipa securities. Sipa assumes that the recipient is capable of making an independent assessment, without reliance on this document, of the information and any potential investment in Sipa securities.

Disclaimer: Sipa and its related bodies corporate and each of their respective directors, agents, officers, employees and advisers expressly disclaim, to the maximum extent permitted by law, all liabilities (however caused, including negligence) in respect of, make no representations regarding, and take no responsibility for, any part of this presentation and make no representation or warranty as to the currency, accuracy, reliability or completeness of any information, statements, opinions, conclusions or representations contained in this presentation. In particular, this presentation does not constitute, and shall not be relied upon as, a promise, representation, warranty or guarantee as to the past, present or the future performance of Sipa.

Future performance: This presentation contains certain forward-looking statements and opinion. The forward-looking statements, opinion and estimates provided in this presentation are based on assumptions and contingencies subject to change without notice, as are statements about market and industry trends, which are based on interpretations of current market conditions. Forward-looking statements, including projections, forecasts and estimates, are provided as a general guide only and should not be relied on as an indication or guarantee of future performance and involve known and unknown risks, uncertainties and other factors, many of which are outside the control of Sipa. Past performance is not necessarily a guide to future performance and no representation or warranty is made as to the likelihood of achievement or reasonableness of any forward-looking statements or other forecast.

Risks: An investment in Sipa shares is subject to investment and other known and unknown risks, some of which are beyond the control of Sipa.

Not an offer: This presentation is not, and should not be considered as, an offer or an invitation to acquire securities in Sipa or any other financial products and neither this document nor any of its contents will form the basis of any contract or commitment. This presentation is not a prospectus. Offers of securities in Sipa will only

be made in places in which, or to persons to whom it would be lawful to make such offers. This presentation must not be disclosed to any other party and does not carry any right of publication. Neither this presentation nor any of its contents may be reproduced or used for any other purpose without the prior written consent of Sipa.

No Distribution in the US: This presentation is not an offer of securities for sale in the United States. Any securities to be issued by Sipa have not been and will not be registered under the US Securities Act of 1933, as amended (the "US Securities Act") and may not be offered or sold in the United States absent registration or an exemption from registration under the US Securities Act. No public offer of the securities is being made in the United States and the information contained herein does not constitute an offer of securities for sale in the United States. This presentation is not for distribution directly or indirectly in or into the United States or to US persons.

Monetary values: Unless otherwise stated, all dollar values are in Australian dollars (A\$).

No distribution: Distribution of this presentation may be restricted by law. Persons who come into possession of this presentation should seek advice on and observe any such restrictions. Any failure to comply with such restrictions may constitute a violation of applicable securities laws.

JORC: There is information in this presentation that relates to exploration results previously reported by Sipa in various ASX Announcements; and by Rio Tinto plc dated 23 February 2022. The Company is not aware of any new information or data that materially affects the information included in those relevant market announcements.

Competent Person Statement: The information in this report that relates to Exploration Results is based on, and fairly represents, information and supporting documentation compiled by Ms Anna Price, a Member of the Australian Institute of Geoscientists. Ms Anna Price is a full-time employee of Sipa Resources Limited who holds options in the Company and has sufficient experience relevant to the styles of mineralisation and types of deposit under consideration and to the activities being undertaken to qualify as a Competent Person as defined in the 2012 Edition of the 'Australasian Code for Reporting of Exploration Results, Mineral Resources and Ore Reserves'. Ms Price consents to the inclusion in this report of the matters based on his information in the form and context in which they appear.

Board Approval: This presentation is authorised for release by the Board of Sipa Resources Limited.

Sipa confirms that it is not aware of any new information or data that materially affects the information included in the original market announcements. The Company confirms that the form and context in which the Competent Person's findings are presented have not been materially modified from the original market announcements.

CAUTIONARY STATEMENT - REPORTING OF HISTORICAL DRILLING

The historical results included in this release include exploration results collected between approximately 1995 - 2019. Whilst not all referenced in this release, exploration activity on ground covered by the current tenements was undertaken by:

Equinox Minerals NL, 1994 - 2004, MIM Exploration 1995 - 2003, Minotaur Exploration 1997 - 2008, Range River Gold 2003 - 2005, Southern Gold, 2004 - 2009 and Doray Minerals, 2009 - 2019.

As per ASX requirements, Sipa notes that all of the drill results were reported under the 1989 version of the JORC code, and are not reported in accordance with the JORC Code 2012; a competent person has not done sufficient work to disclose the corresponding exploration results in accordance with the JORC Code 2012; it is possible that following further evaluation and/or exploration work that the confidence in the prior reported exploration results may be reduced when reported under the JORC Code 2012; that nothing has come to the attention of Sipa that questions the accuracy or reliability of the former owner's exploration results, but Sipa is in the process of independently validating the previous owner's exploration results and therefore is not to be regarded as reporting, adopting or endorsing those results.

Sipa will continue to review and validate the data to enable the results to be reported in accordance with the JORC Code 2012. This work is to be undertaken in 2025 and will be funded out of existing cash reserves.

The levels of gold reported, from past activities, are a key factor in guiding Sipa's exploration strategy. The previous activity, which produced these results, involved multiple rounds of calcrete sampling, aircore drilling and RC drilling.

The results are considered to have been generated from work programs representing usual industry practice for the time they were collected and analysed at commercial laboratories which services the mineral exploration industry. In the professional opinion of the Competent Person, Sipa has, however, done sufficient verification of the data, to provide sufficient confidence that drilling, sampling and assays were performed to adequate industry standards and is fit for the purpose of planning exploration programs and generating targets for further investigation.

The Competent Person has confirmed that the information in the market announcement is an accurate representation of the available data.

The announcement is not otherwise misleading.

All results in this release have previously been disclosed - see ASX announcement dated 19/12/24

CORPORATE SNAPSHOT

Capital Structure

Shares	416.4M
Unlisted Options	106.7M
Current Share Price	\$0.011
Market Cap	\$4.6M
Cash	\$2.0M
Enterprise Value	\$2.6M

Major Shareholders

Stephen Biggins	12.3%
Rodiv P/L Pension Fund	7.4%
Lowell Resources Fund	5.6%
JM Financial	5.4%
Directors	14.3%
Top 20	59.0%

Board & Management

Andrew Muir

Managing Director

Experienced mining executive with significant finance and geological experience, as well as discovery success

Craig McGown

Non-Executive Chairman

Investment banker with extensive experience in mining sector capital raising and corporate advisory

Stephen Biggins

Non-Executive Director

Successful geologist and mining executive. Founding director of several ASX companies including Core Lithium. Non-Exec Chairman of Winsome Resources and Stellar Metals.

John Forwood

Non-Executive Director

Resources fund manager, geologist, investment banker. Qualified lawyer. Non-Executive Director with Flynn Gold Limited

Rick Yeates

Non-Executive Director

Geologist with considerable international consulting and executive experience

Anna Price

Exploration Manager

Significant copper, lithium and gold exploration experience in WA, NT, Oman and Portugal



***Creating
shareholder value
through
exploration of
large-scale targets,
balanced with
developing
advanced, lower-
risk projects
proximal to mining
infrastructure***

PROJECTS



PROJECTS

South Australia

Three projects located in the central Gawler Craton

- **Tunkillia North Gold Project**
- **Nuckulla Hill Gold Project**
- **Skye Gold Project**

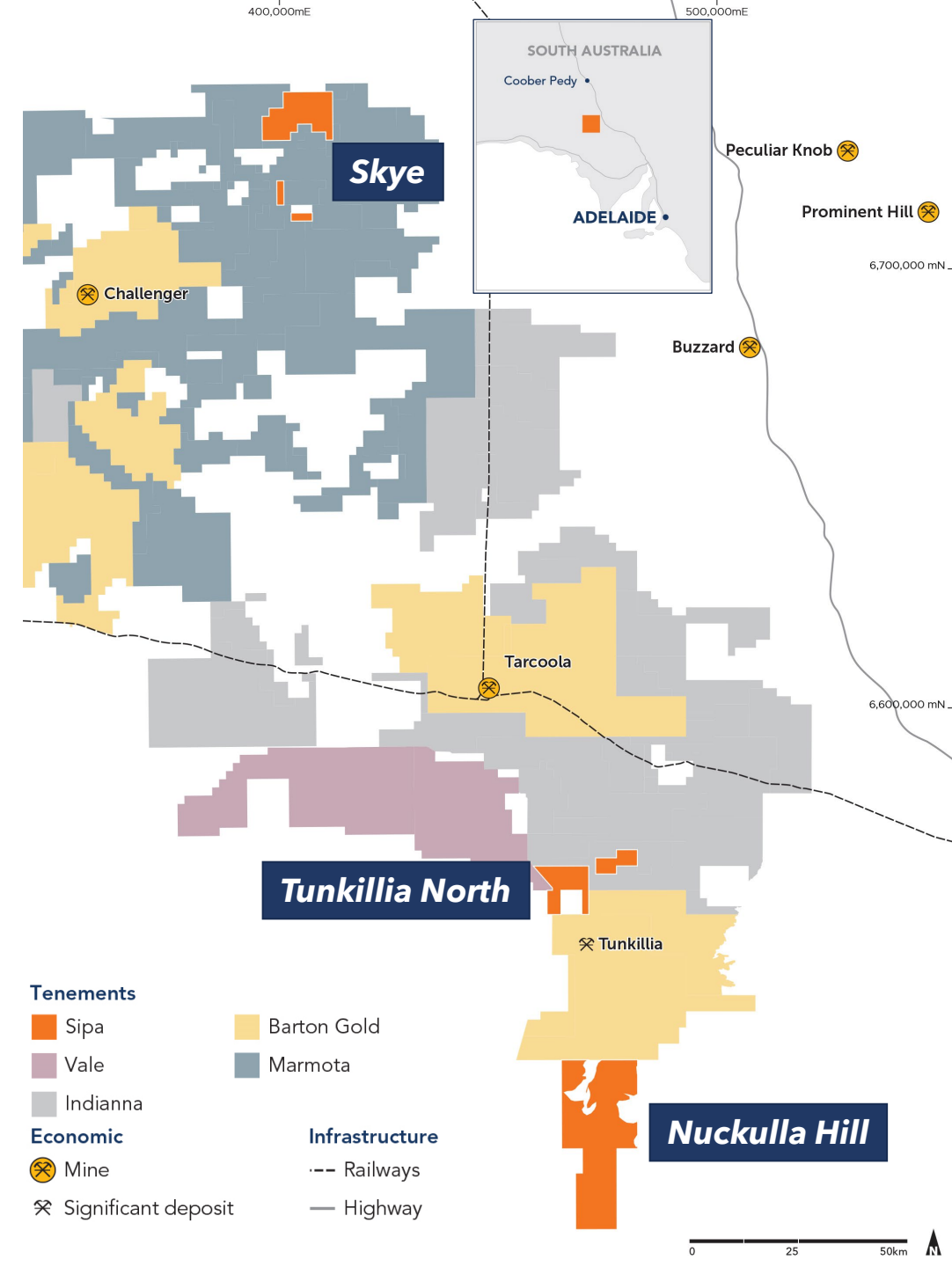
Neighbours include:

- Barton Gold Holdings Limited (c.\$81m market capitalisation)
- Indiana Resources Limited (c.\$50m market capitalisation)
- Marmota Limited (c.\$45m market capitalisation)

Large gold deposits in the region:

- 1.2Moz gold Challenger¹
- 1.6Moz gold Tunkillia²

1: <https://bartongold.com.au/projects/challenger/>
2: See ASX:BGD 4/3/25

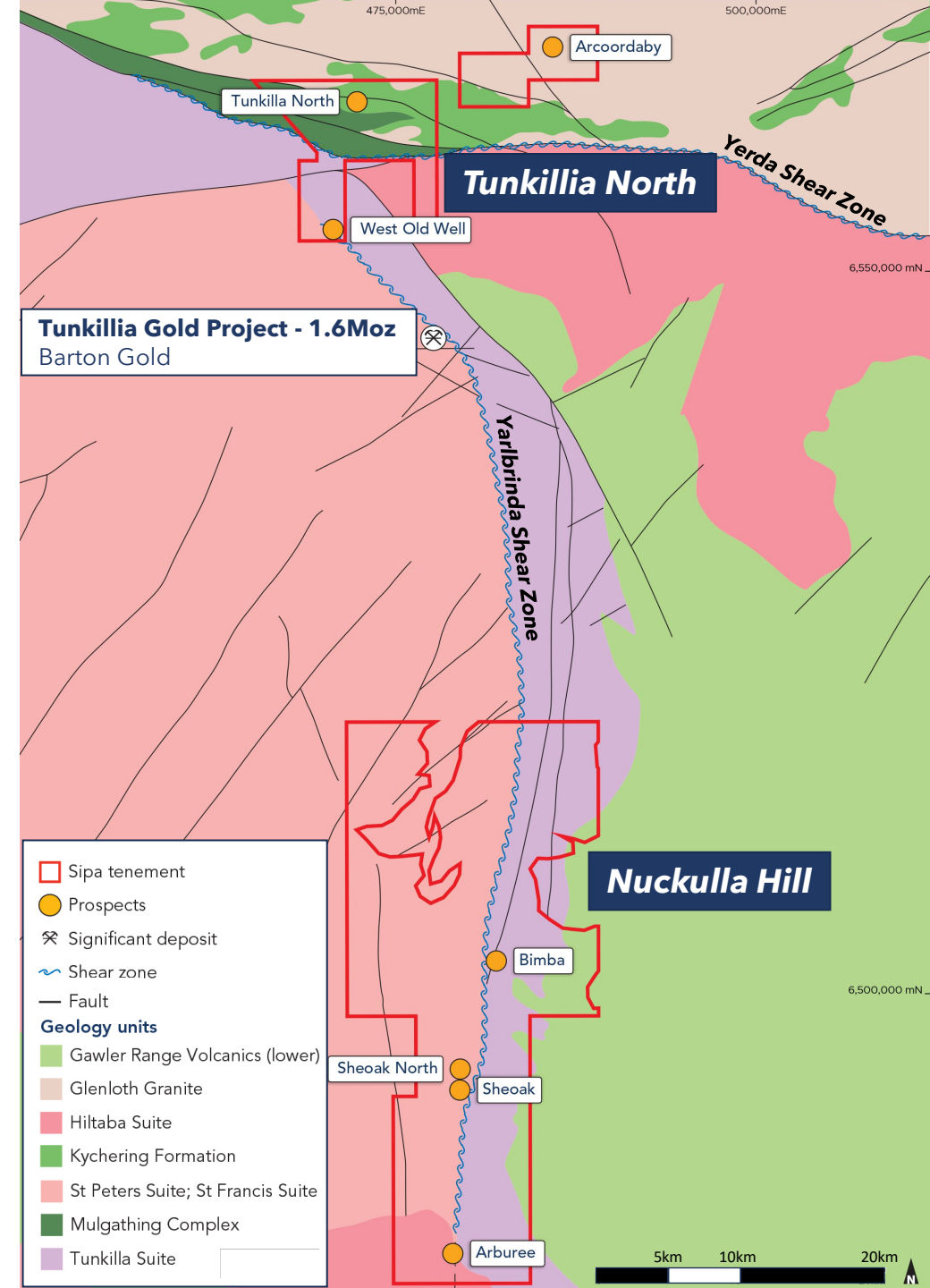


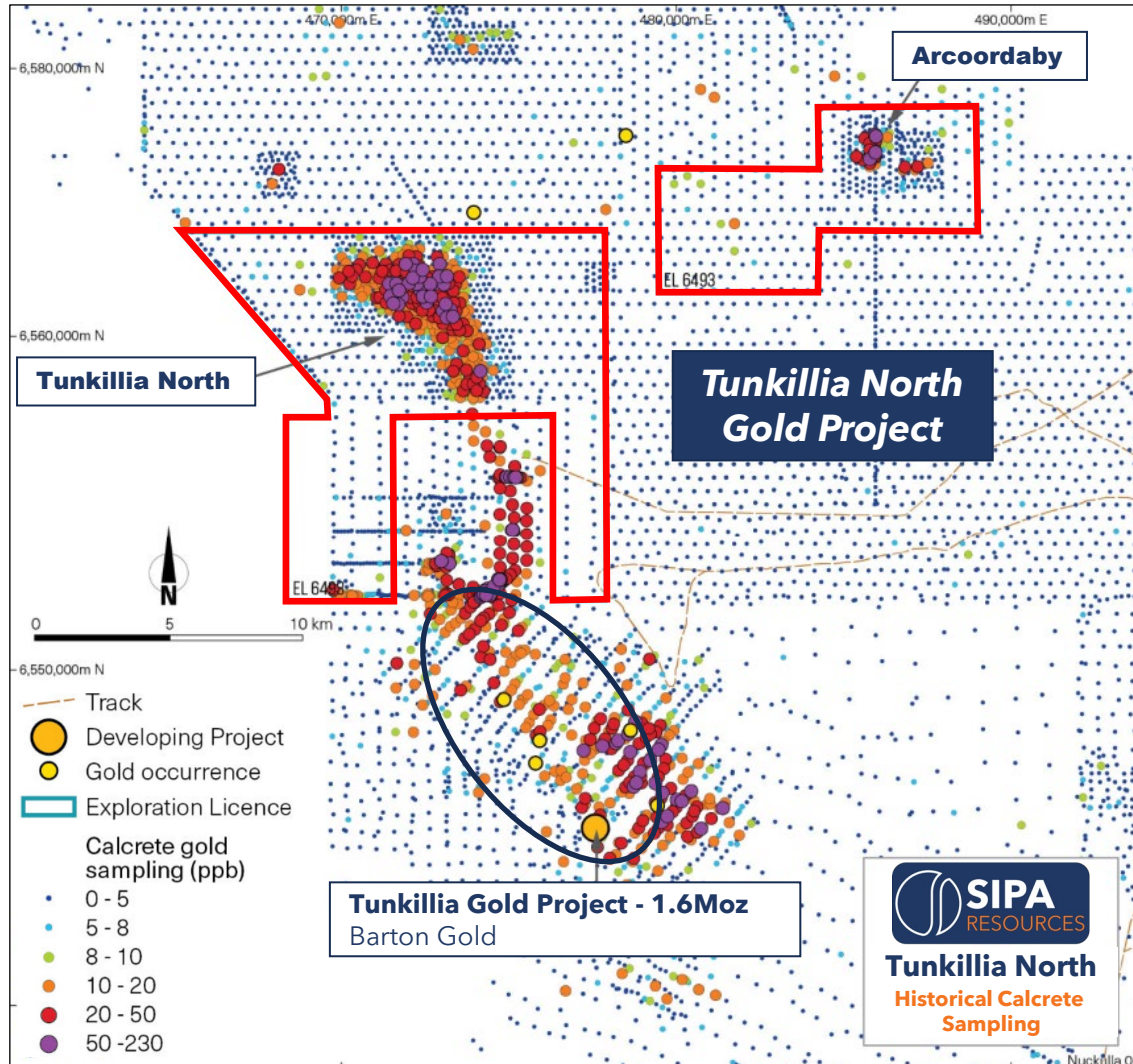
PROJECTS

Tunkillia North and Nuckulla Hill

POTENTIAL FOR MULTIPLE LARGE SCALE GOLD DEPOSITS

- One +1Moz deposit discovered already (Tunkillia), yet only modest exploration to date
- Large and fertile regional structures
 - Yarlbrinda & Yerda Shear Zones
 - The Yarlbrinda Shear hosts Tunkillia and is a major fluid pathway for gold mineralisation
- Tunkillia North and Nuckulla Hill are proximal to emerging developer Barton Gold's 1.6Moz Tunkillia deposit
- Favourable host rocks and structures at both projects
- ➔ **Ground reconnaissance already completed**
- ➔ **Drill planning well advanced for both projects**
- ➔ **Heritage survey process underway**



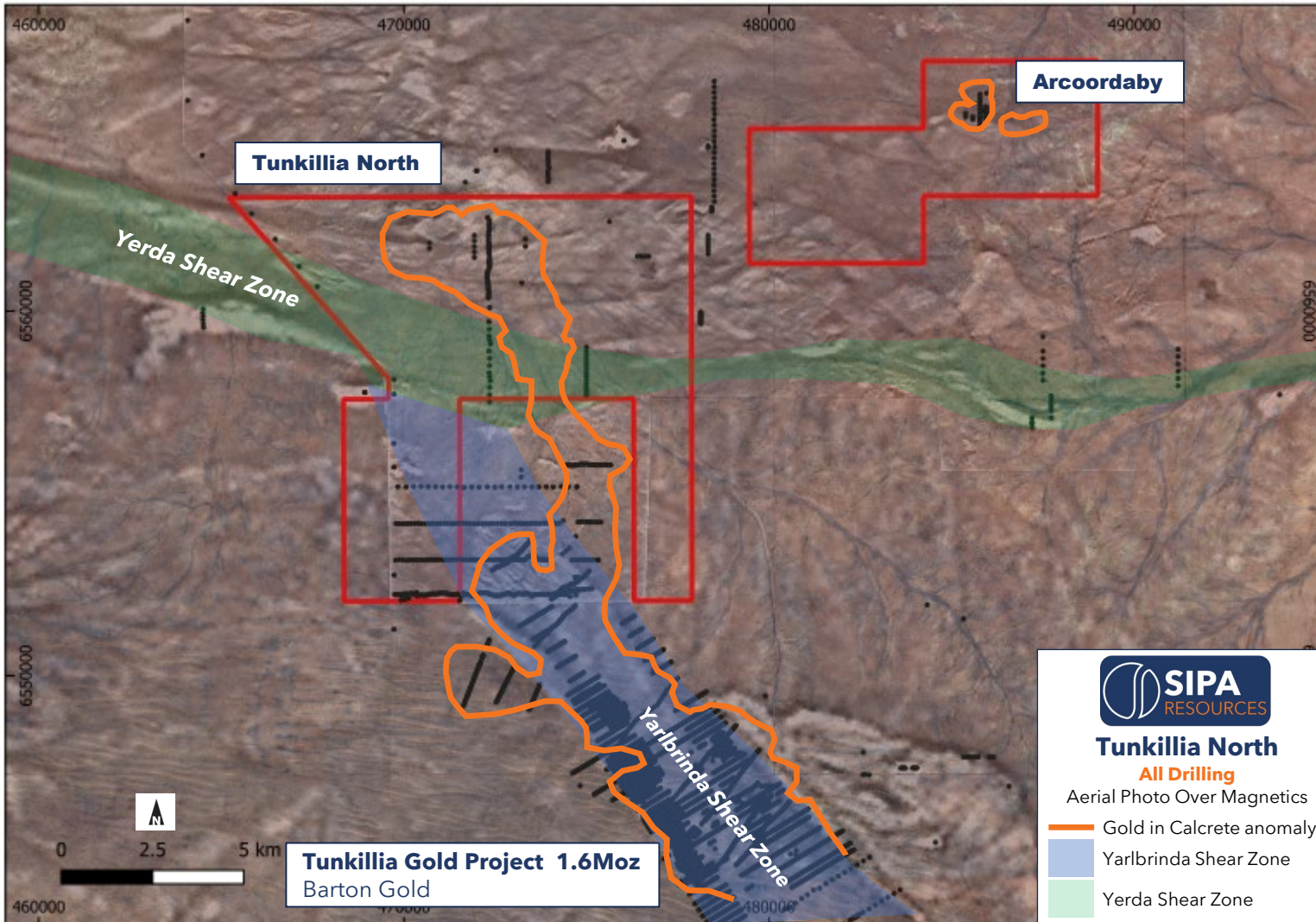


Tunkillia North Gold Project - SA

- One granted Exploration Licence covering 119 km²
 - Located c.10km north of BGD's 1.6Moz Tunkillia Gold Project
 - In the 1990's, historical calcrete sampling² identified a 5km x 5km gold-in-calcrete geochemical anomaly
 - This anomaly is very similar to the anomaly to that which led to the 1.6Moz Tunkillia discovery
 - Limited historical drilling with line of aircore by MIM that did not effectively test the anomaly
- ➔ **Calcrete infill sampling completed - results pending**

1: See ASX:BGD 4/3/25

2: See Open File Envelope no. 9862 EL 2518 / 3107 / 4197 Lake Harris West Annual Reports and Second Partial relinquishment for the period 25/05/1998 to 02/11/2013 - submitted by MIM Exploration



Tunkillia North Gold Project - SA

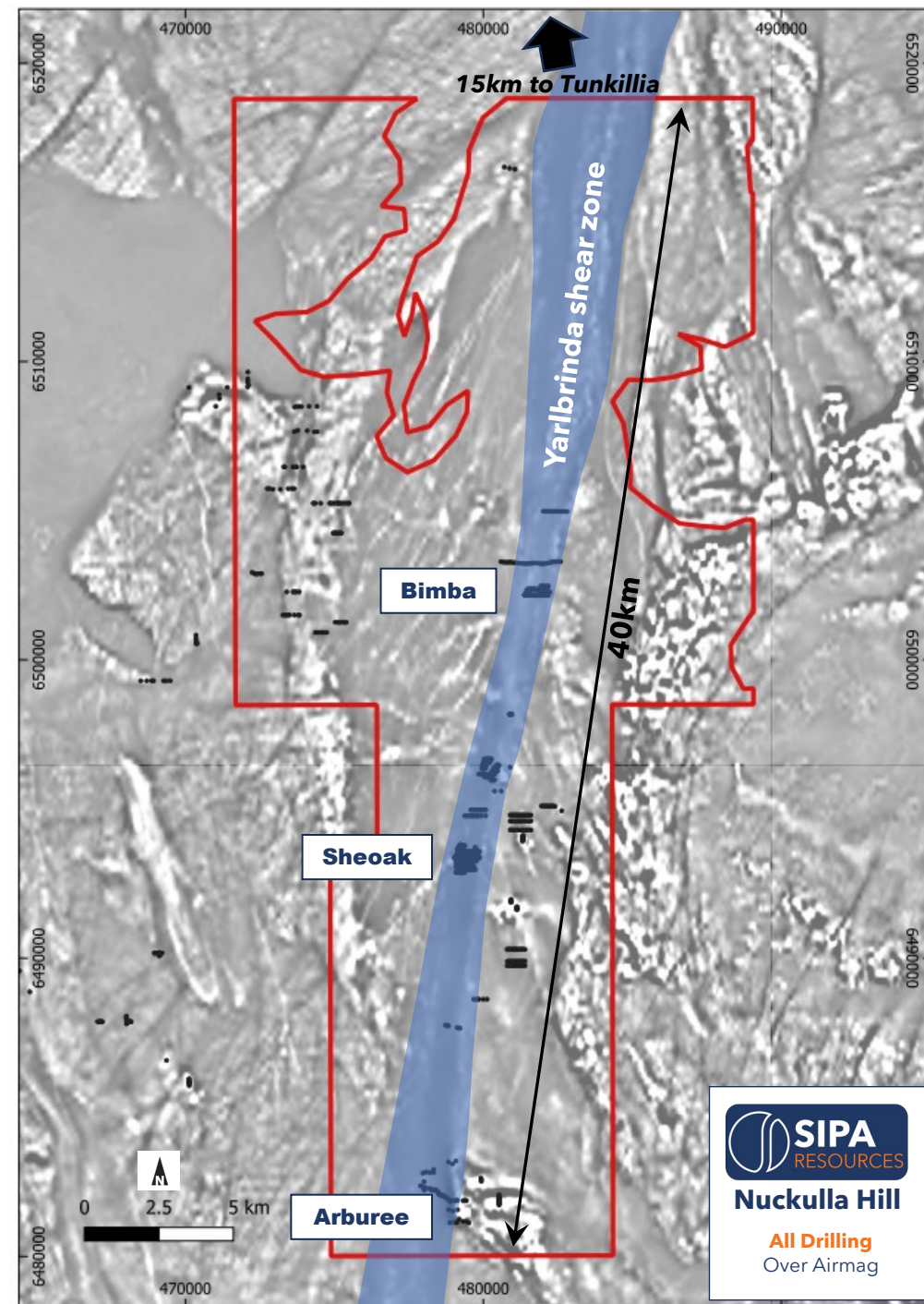
- Vast majority of on-ground exploration has been calcrete sampling
 - Calcrete sampling is very useful, but not a magic bullet
 - Drilling is the key to success
 - Very limited historical drilling on Tunkillia North
 - Largely regional aircore traverses
 - Minor RC & diamond drilling at Arcoordaby
- ➔ **Multiple drill programs planned including testing the Tunkillia North calcrete anomaly and Arcoordaby**

PROJECTS

Nuckulla Hill Project - SA

HIGH PRIORITY FOCUS - REGIONAL AND EXTENSIONAL TARGETS

- 15km south of BGD's Tunkillia Gold deposit
 - Contains ~40km strike of the broad Yarlbrinda Shear Zone
 - A major regional fluid pathway for gold mineralisation
 - Limited historical work
 - 1990's calcrete sampling by Equinox
 - Modest follow up aircore and limited RC drilling
 - Identified gold mineralisation at multiple prospects including
 - Sheoak, Bimba and Myall
 - Large alteration halos identified at each prospect
- ➔ **Very large areas of Yarlbrinda are untested**



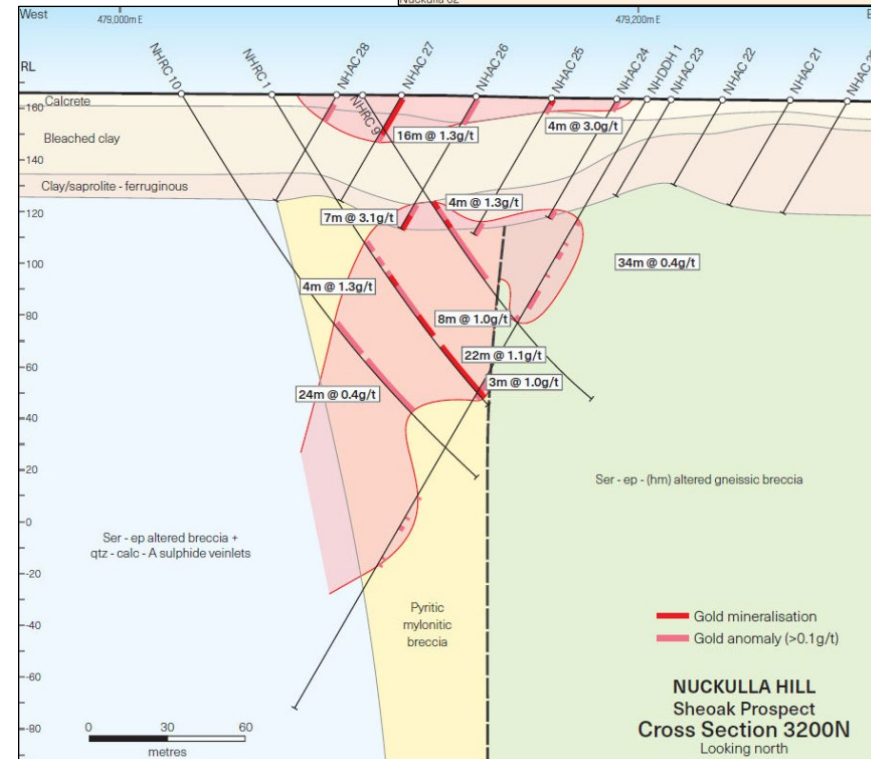
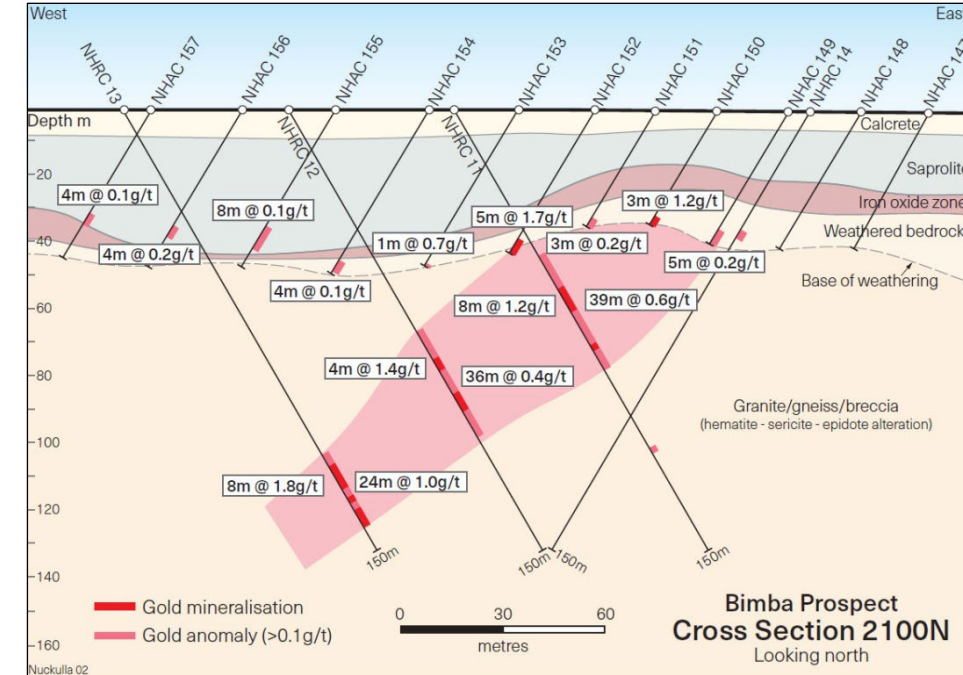
PROJECTS

Nuckulla Hill Project - SA

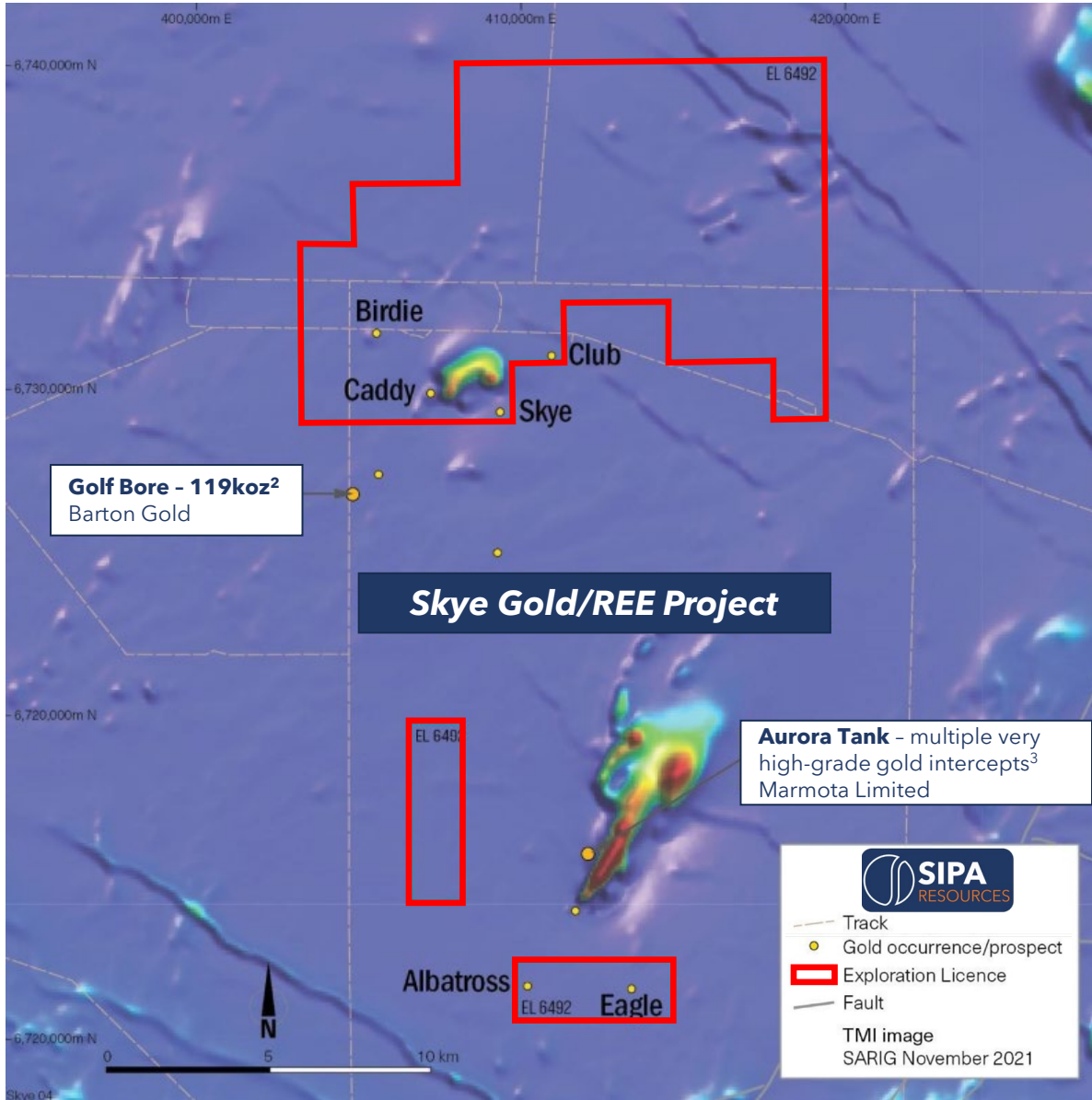
HIGH PRIORITY TARGETS

- Multiple +1g/t intercepts from historical drilling by Equinox including¹
 - 7m @ 3.1g/t Au from 52m - Sheoak
 - 24m at 1.0g/t Au from 122m - Bimba
 - Sheoak is +800m long and open along strike and at depth
 - Bimba is +300m long and open along strike and at depth
- ➔ **Site reconnaissance completed**
- ➔ **Heritage survey process underway**
- ➔ **Drilling planned to test strike and regional extensions**

1: See Open File Envelope no. 9020 - EL 2035 and EL 2761 Nuckulla Hill - Equinox Annual Reports for the period 6/12/94 to 18/10/2002



Historical Cross Sections through Sheoak and Bimba by Equinox¹



Skye Gold & REE Project - SA

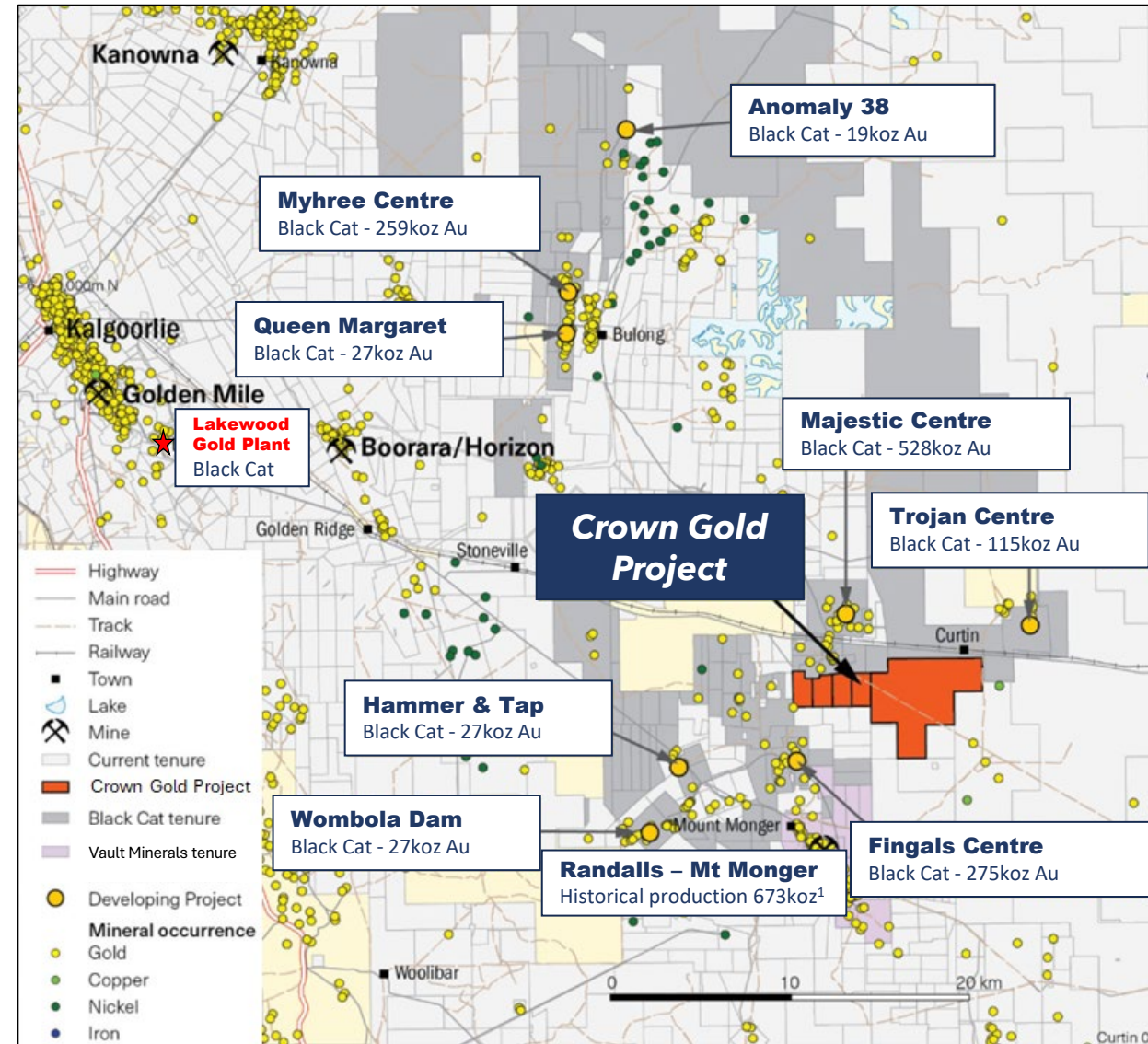
- One Exploration Licence covering 155 km² in the central Gawler Craton
- 40km from Barton’s Challenger gold mine which produced 1.2Moz of gold between 2002 and 2018¹
- 1.5km along strike from Barton’s 119koz Golf Bore deposit²
- Adjacent to Marmota Limited’s high-grade Aurora Tank project
- Recent gold results from Aurora Tank include:
 - 1m @ 217g/t Au, 3m @ 72g/t Au & 2m @ 67g/t Au³
- Work will on the structural corridor from Challenger, past Golf Bore and Golf North into the Project area

1: <https://bartongold.com.au/projects/challenger/>
 2: See ASX: TYX 30/5/2018
 3: See ASX: MEU 20/01/2025 & 26/11/2024

PROJECTS

Crown Gold Project - WA

- Located 40 km southeast of Kalgoorlie with easy access and good road network
- Adjacent to Black Cat Syndicate Limited (ASX: BC8, c.\$630m market Cap) Kal East Gold Operations:
 - Majestic, Fingals and Trojan projects
 - Trucking distance to BC8's recently acquired Lakewood processing plant and other third-party plants
- Potential to host a range of different gold deposit styles
- Multiple gold soil anomalies already delineated
- Only modest shallow RAB drilling to date
- ➔ **Site visit & targeting study completed**
- ➔ **Heritage survey process underway**
- ➔ **Aircore drilling targeted for June quarter**



LEVERAGED TO GOLD EXPLORATION SUCCESS

Well Positioned Projects

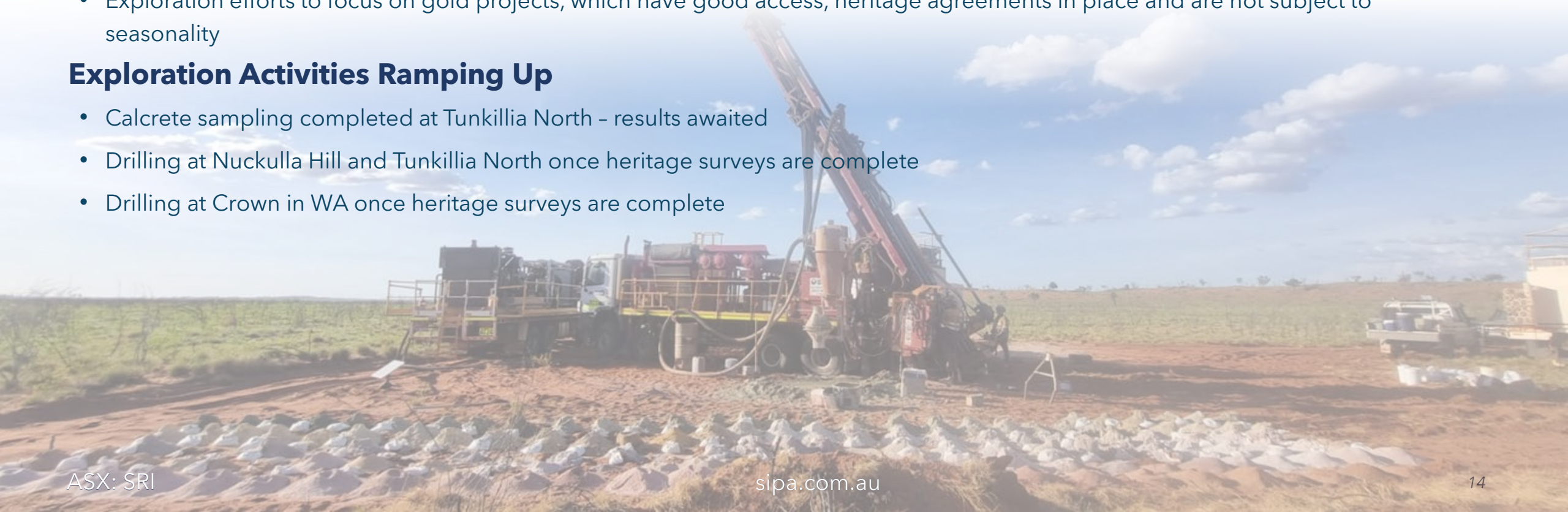
- SA: Nuckulla Hill and Tunkillia North are adjacent to Barton Gold's 1.6Moz Tunkillia Gold Project
- WA: Crown is adjacent to BC8's Kal East Operations and trucking distance to the Lakewood and other third-party processing plants
- All projects are underpinned by quality and prospective geology with good logistics

Gold Focus

- Exploration efforts to focus on gold projects, which have good access, heritage agreements in place and are not subject to seasonality

Exploration Activities Ramping Up

- Calcrete sampling completed at Tunkillia North - results awaited
- Drilling at Nuckulla Hill and Tunkillia North once heritage surveys are complete
- Drilling at Crown in WA once heritage surveys are complete





ASX: **SRI**

Andrew Muir
Managing Director

+61 (8) 9388 1551
andrew@sipa.com.au

Nicholas Read
Read Corporate

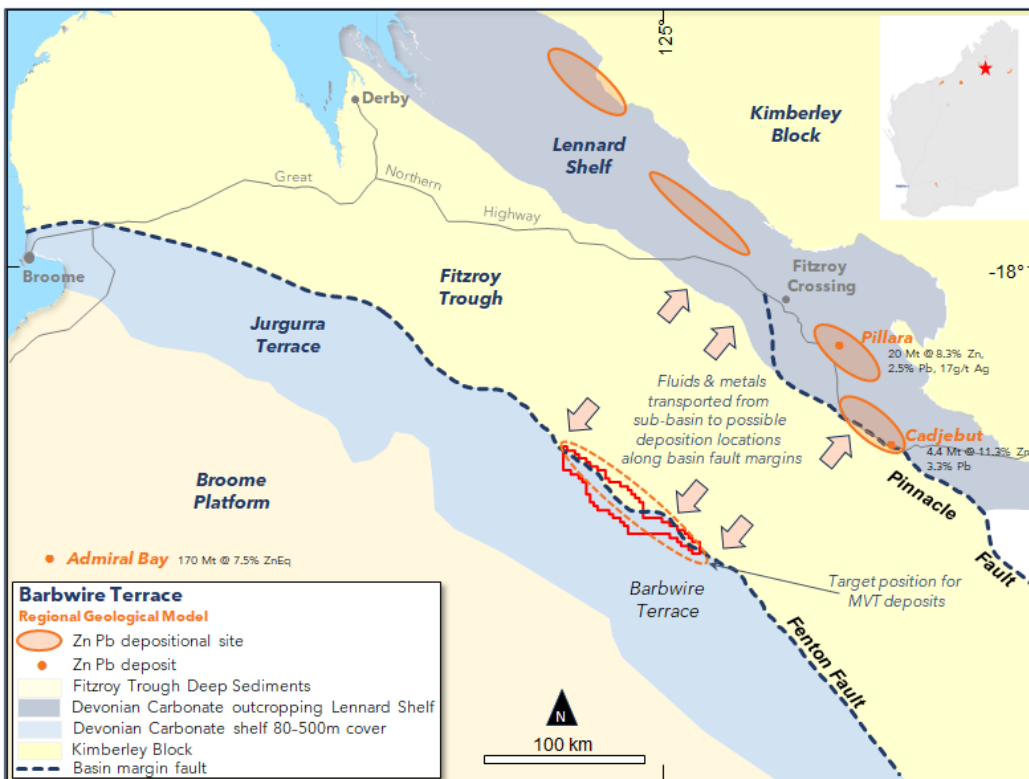
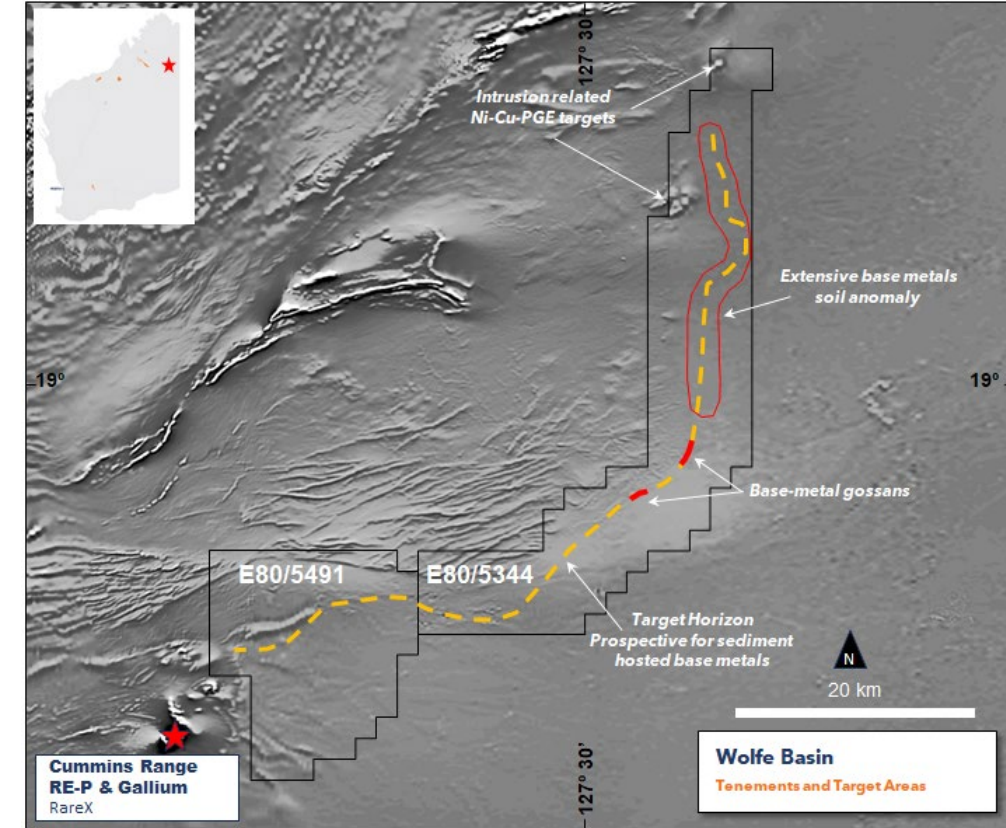
+61 (8) 9388 1474
info@readcorporate.com.au

sipa.com.au

APPENDIX 1 - OTHER PROJECTS - WA

Wolfe Basin

- Adjacent to RareX's Cummins Range RE-P & Gallium deposit
- 780 km² of unexplored Proterozoic Basin which is prospective for large scale sediment-hosted copper-lead-zinc
- >80 km of prospective stratigraphy, with stratabound gossans and extensive coincident base metals soil anomaly



Barbwire Terrace

- +620km² of granted tenements targeting Mississippi Valley Type (MVT) targets & analogous to the high-grade Lennard Shelf deposits
- Maiden drilling in 2022 demonstrated proof of concept, recent gravity refined targets for planned drilling