

Extensive sulphides observed in step out drilling at Rae Copper Project

White Cliff Minerals Limited (“WCN” or the “Company”) is pleased to provide an update on the reverse circulation drilling campaign at the Company’s 100% owned Rae Copper Project in Nunavut, Canada.

- Step out drilling continues to return visually identified¹ sulphide mineralisation in all holes.
- **Highlights from this recent drilling** includes:
 - **DAN25008: 175m of visually identified sulphides from 7m downhole. Hole ended in mineralisation.**
 - **DAN25005: 91m of visually identified sulphides from surface.**
 - **DAN25007:** Multiple zones of visually identified sulphides including 24m from 28m and **71m from 61m downhole.**
 - **DAN25004:** Multiple zones of visually identified sulphides including 27m from 20m, 30m from 67m, 18m from 100m and 11m from 123m downhole indicating multiple parallel mineralised lodes.
 - **DAN25006: 56m of visually identified sulphides in multiple zones from 7m.**
- First pass drilling at Danvers completed with rig now repositioned to Hulk.
- Samples from these drillholes have been dispatched to ALS Laboratories, with assay results expected within the next 4 to 6 weeks. Samples from the earlier holes remain on target for results within the next 3-5 weeks.
- **Outcropping copper mineralisation identified at surface 4.7km along strike to the southwest of Danvers on same structural zone, including sample V749909 which hosts 20% visually identified chalcocite mineralisation.**

“Pleasingly, our early foray into the north Canada drilling season is now paying dividends. The team is now orientated & dialled into the structural setting at Danvers of the mineralisation as evidenced by drill hole 8 (DAN25008), a massive 175m of continuous sulphides that ended in what we believe to be copper mineralisation. Whilst we are yet to receive assays, visually, drilling to date indicates strike and dip continuity of historic shallow drill results. Whilst we would like to continue to drill at Danvers based on these last few holes, we remain committed to our stated strategy of drilling Hulk as part of this maiden campaign. The rig has therefore been repositioned and drilling is underway, targeting large-scale sediment-hosted copper. The Hulk basin is home to a strong geophysical conductor spanning 3 sub-basins for a total area of ±150km².

Assay results will set the direction of future diamond drilling at site. As we continue to undertake exploration activities in the greater Rae project area, the true extent of the regions copper potential is now becoming increasingly clear and importantly the structural plumbing that provided the fluid pathways up to Hulk are now proven fertile with significant depth extent containing what we believe to be copper. We eagerly await the results back from the lab which will show definitively the copper potential this drilling has encountered.

Troy Whittaker - Managing Director

¹ In relation to the disclosure of visual mineralisation, the Company cautions that visual estimates of sulphide and oxide material abundance should never be considered a proxy or substitute for laboratory analysis. Laboratory assay results are required to determine the widths and grade of visible mineralisation reported in sampling. The Company will update the market when laboratory analytical results become available, which are expected within 4-6 weeks.

In addition to the drilling success observed at Danvers, field work has been ongoing, exploring along the host structure to the southwest. Outcropping chalcocite-malachite mineralised basalts have been identified and sampled over 4.7 km along strike from Danvers. This attests to the fertility of the NE/SW structure that can be traced for more than 10 km through the licence area. Several historic mineral occurrences exist along the strike length of the structure which are yet to be ground truthed by White Cliff. These targets will feed into the target pipeline for future drilling and offer discovery opportunities throughout the lease.

This announcement has been approved by the Board of White Cliff Minerals Limited.

FOR FURTHER INFORMATION, PLEASE CONTACT:

Troy Whittaker - Managing Director
info@wcminerals.com.au

White Cliff Minerals
 T +61 8 9486 4036

FURTHER INFORMATION

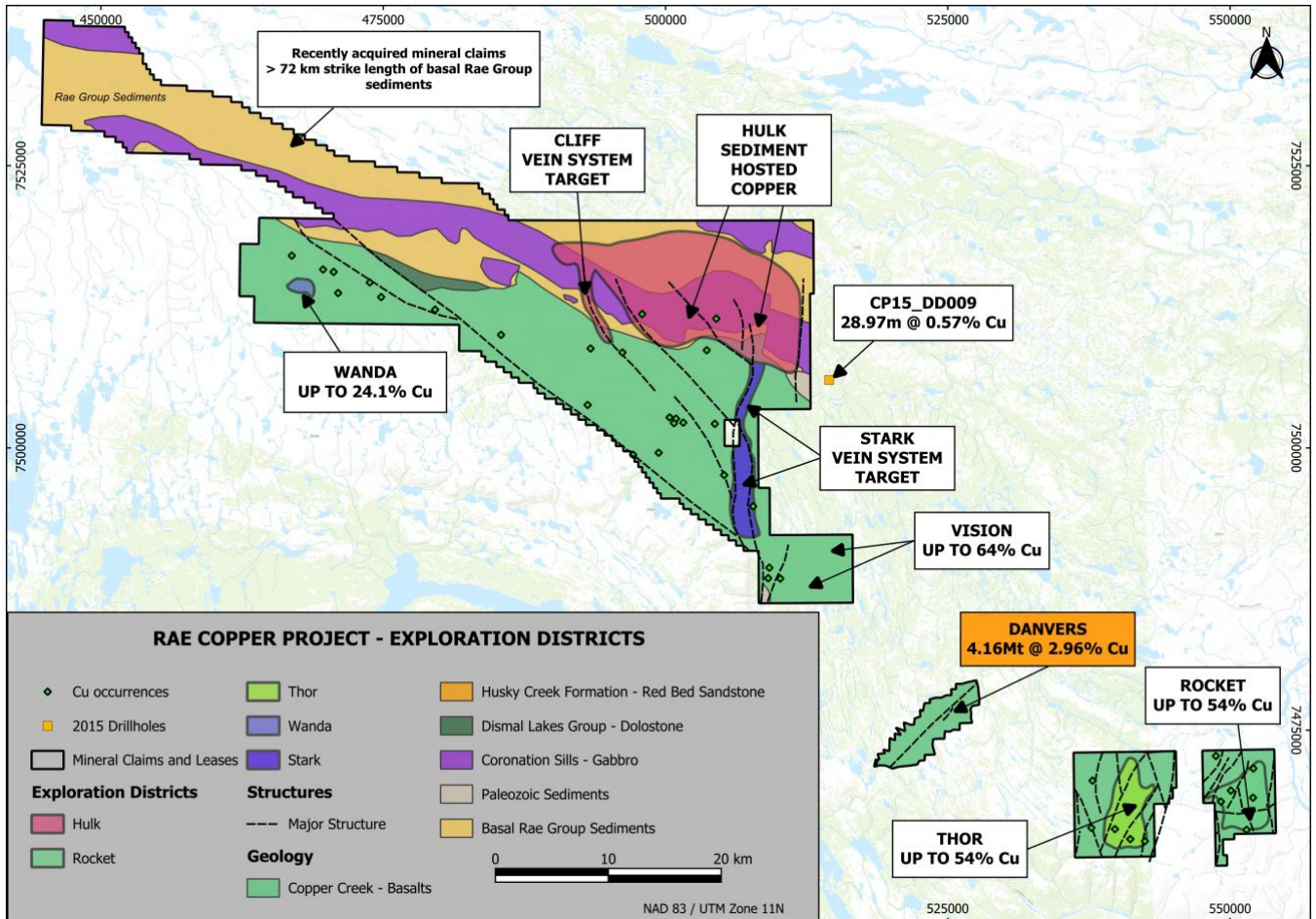


Figure 1 - Rae Copper Project.



Figure 2. Chalcocite from DAN25005 between 27.43-28.96m depth.

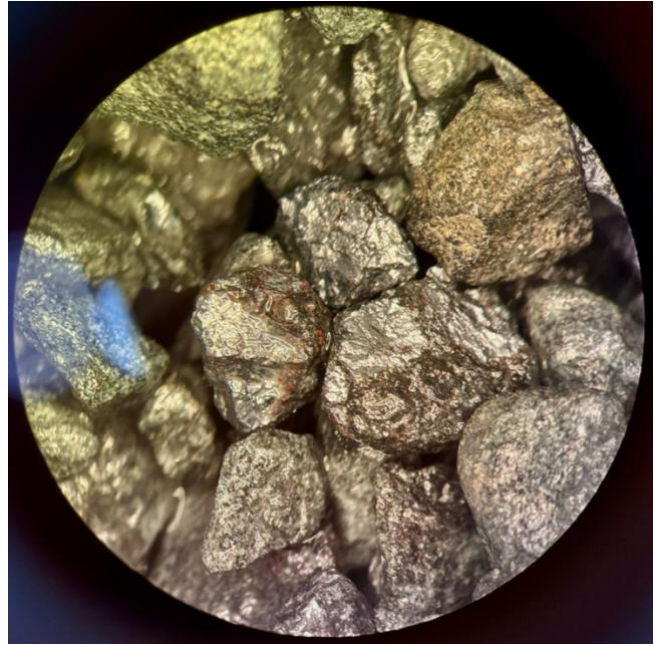


Figure 3. Chalcocite rich chips from DAN25005 between 30.48-32.00m depth.

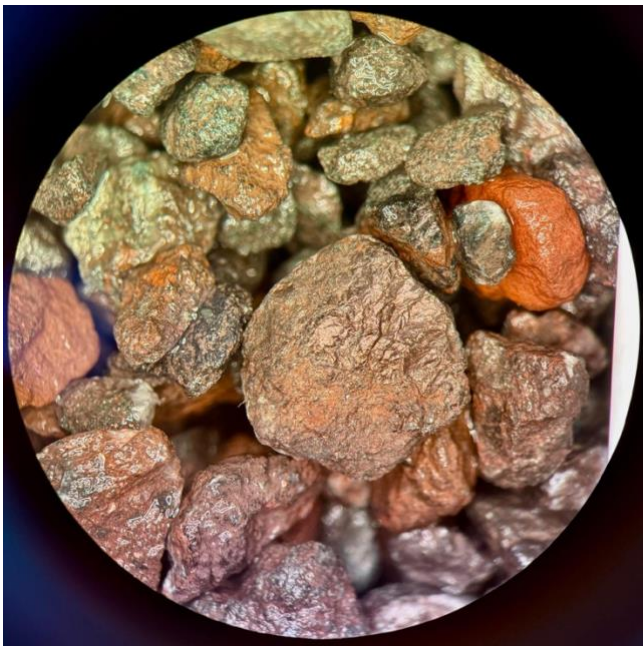


Figure 4. Bornite rich chip from DAN25007 between 47.24- 48.77m depth.

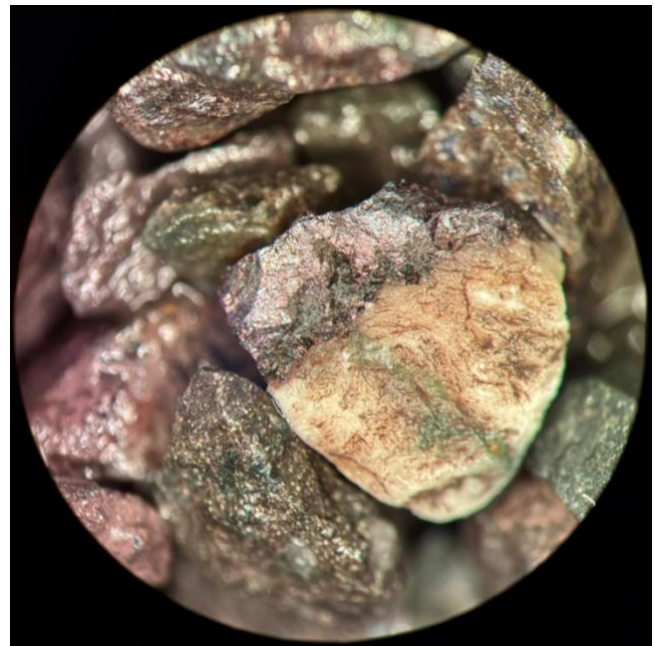


Figure 5. Bornite-chalcocite veined chips from DAN25007 between 94.49-96.01m depth.

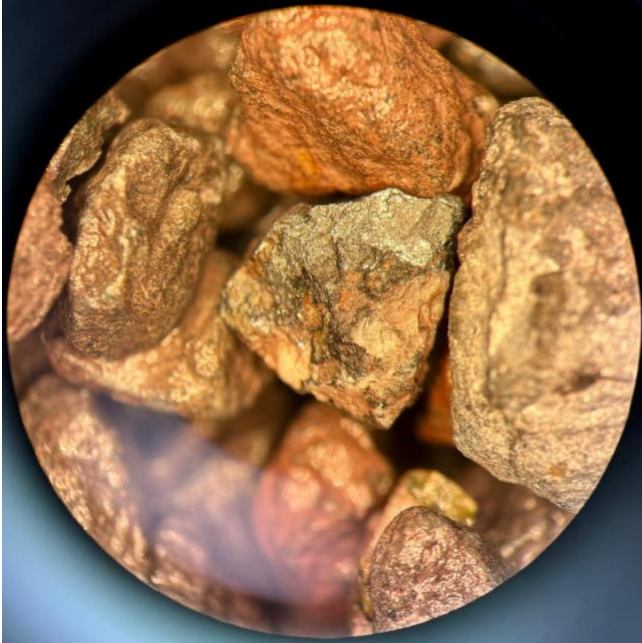


Figure 6. Chalcocite veining from DAN25008 between 51.8 and 54.8m depth.

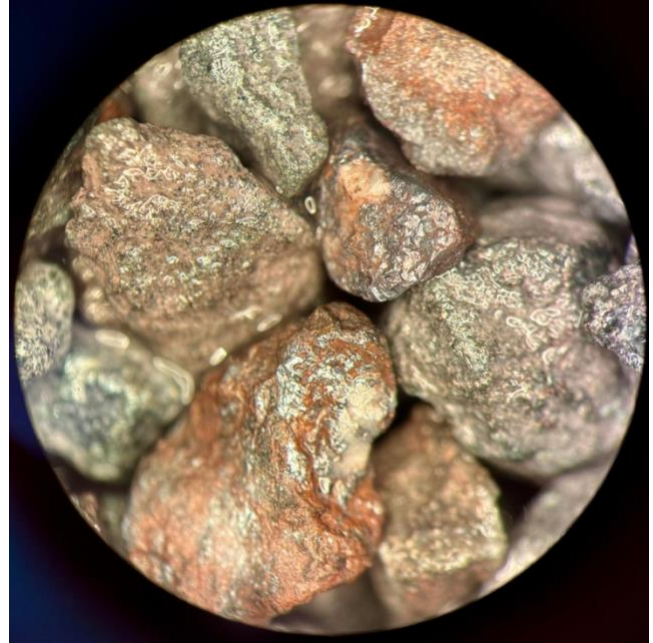


Figure 7. Chalcocite-bornite veining from DAN25008 between 77.7 and 80.7m depth.

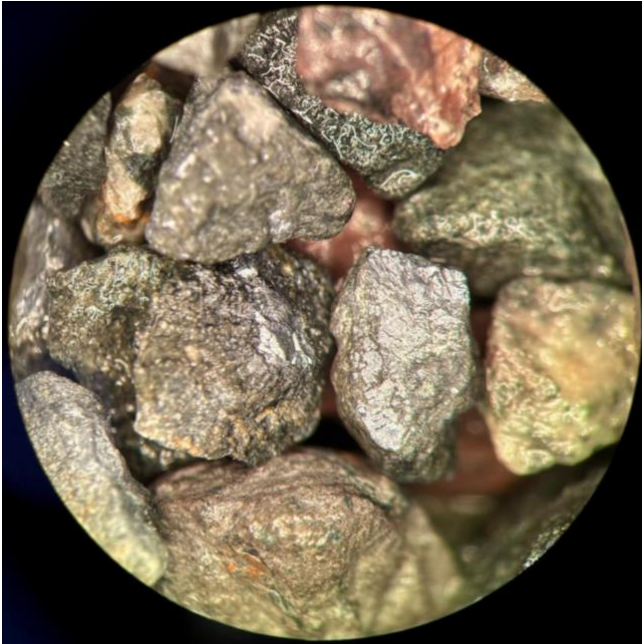


Figure 8. Chalcocite veining from DAN25008 between 138.6 and 140.2m depth.

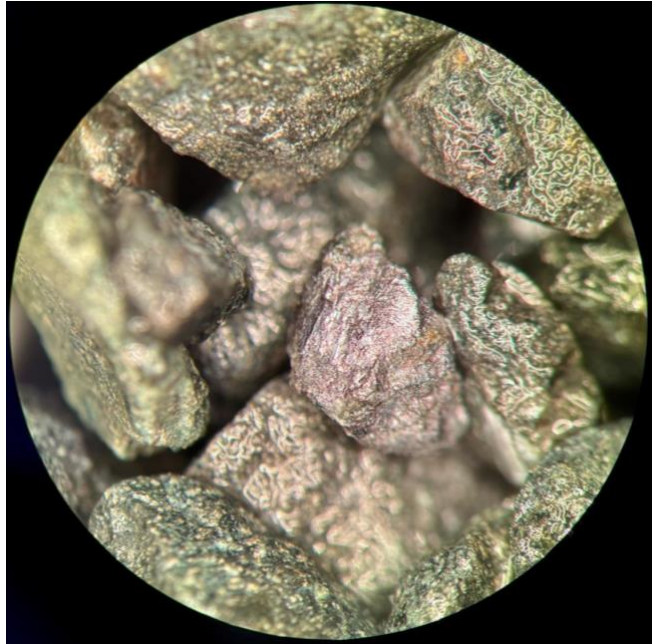


Figure 9. Bornite-chalcocite veining from DAN25008 between 146.3 and 147.8m depth.

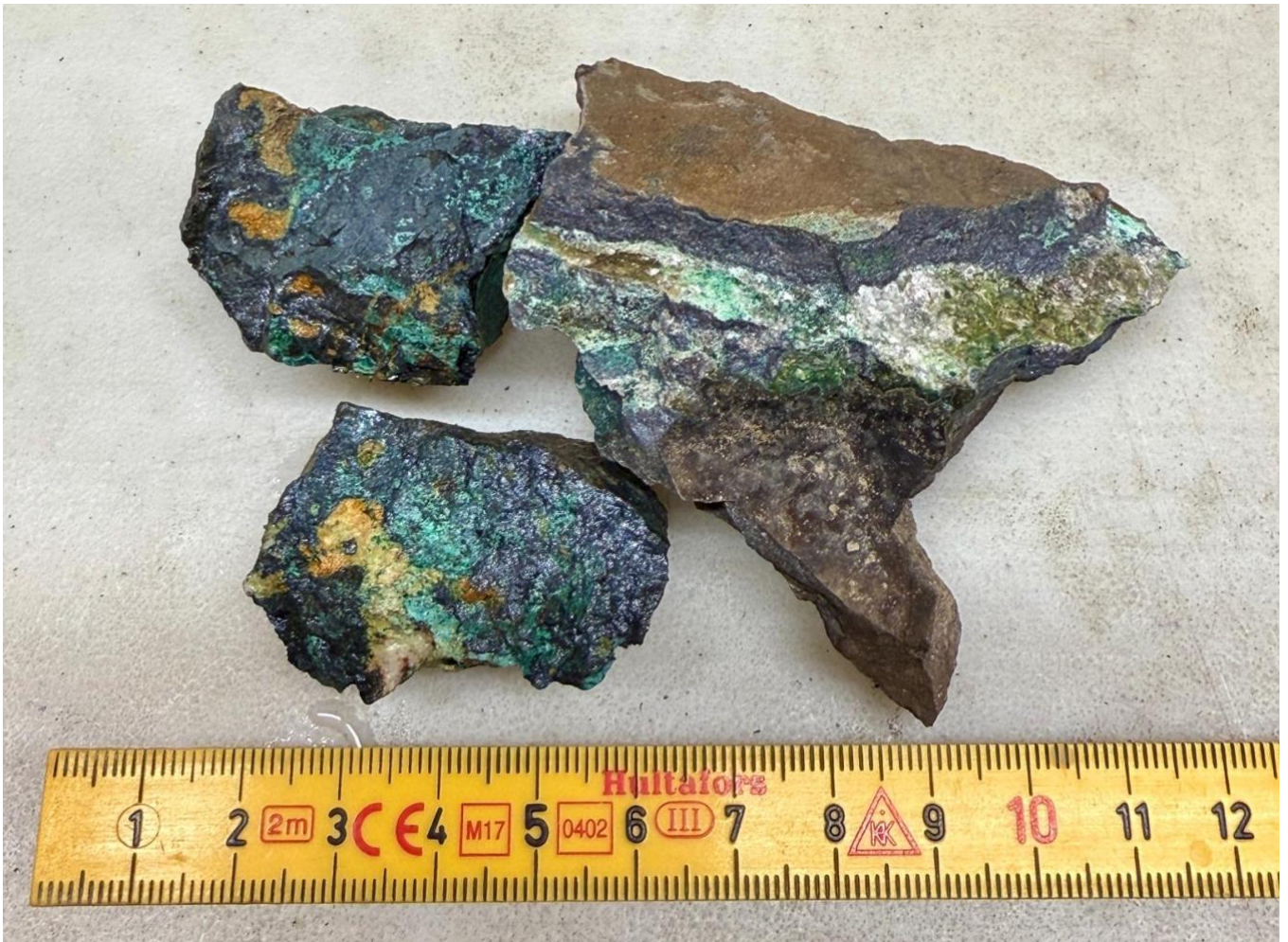


Figure 10. Grab sample V749909 of chalcocite veined basalt, visually estimated to contain 20% chalcocite and 5% malachite. Sample taken over 4.7km SW along the same structure which hosts the Danvers deposit.

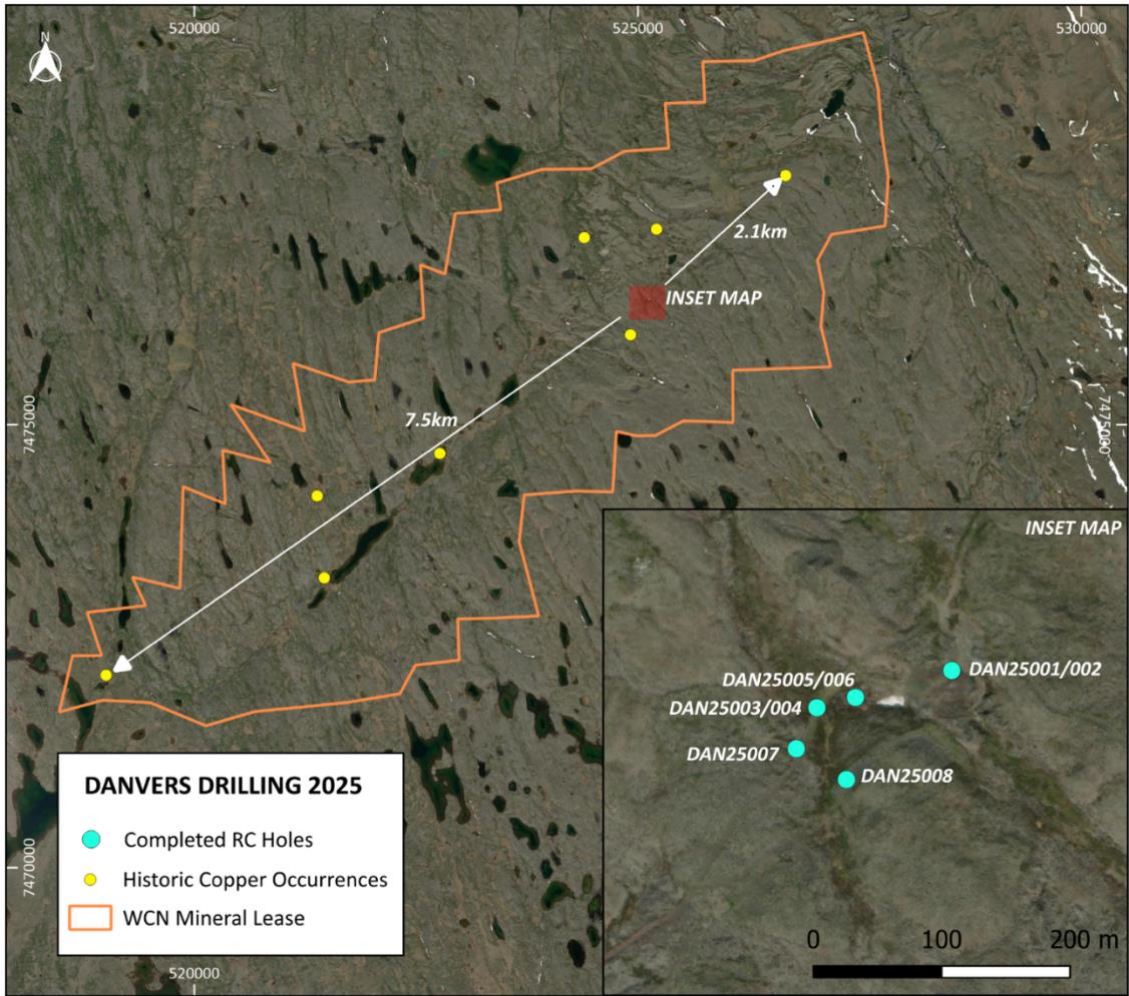


Figure 11. Map of White Cliff's mineral lease acquired in Q4 of 2024. Historic copper occurrences are present along the length of a regional NE/SW trending fault zone, the Teshierpi Fault Zone. The inset map shows drilling progress at Danvers, which covers only a small footprint of the wider lease area.

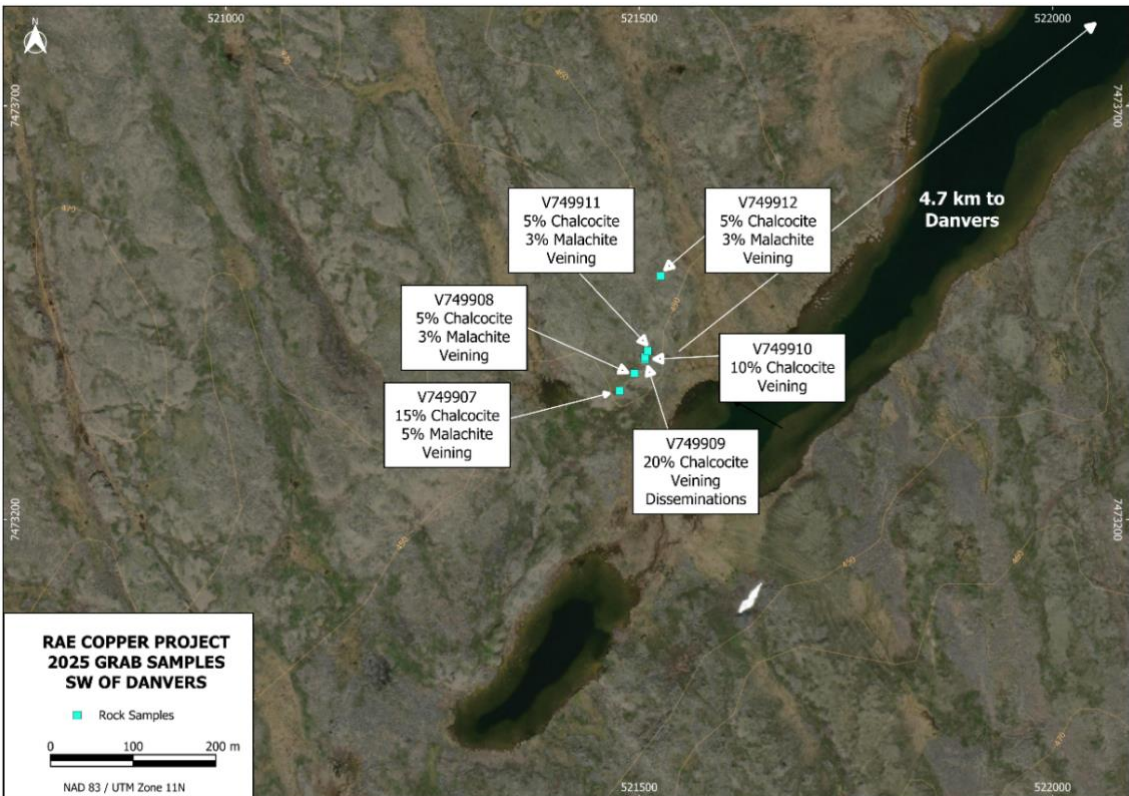


Figure 12. Map of 2025 grab samples taken SW of Danvers. The rock samples are located 4.7 km along strike following a major structure. Samples define 150m of cropping out copper mineralisation.

Table 1. Table of sulphide abundance as per visual estimation of RC drill chips. Intervals are drilled lengths, not true thickness.

Hole ID	From (m)	To (m)	Mineral 1	Abundance (%)	Mineral Form	Mineral 2	Abundance (%)	Mineral Form
DAN25004	7.62	9.144	Chalcocite	0.5	Fracture-related	Bornite	0.5	Fracture-related
DAN25004	19.812	35.052	Bornite	1	Disseminated	Chalcocite	0.5	Disseminated
DAN25004	35.052	47.244	Bornite	0.5	Disseminated			
DAN25004	67.056	74.676	Chalcocite	1	Disseminated			
DAN25004	74.676	77.724	Chalcocite	3	Disseminated			
DAN25004	77.724	97.536	Chalcocite	1	Stringer Veins			
DAN25004	100.584	108.204	Chalcocite	0.5	Stringer Veins			
DAN25004	108.204	118.872	Chalcocite	3	Stringer Veins	Bornite	1	Stringer Veins
DAN25004	123.444	134.112	Chalcocite	0.5	Patchy			
DAN25005	0	3.048	Chalcocite	0.5	Fracture-related			
DAN25005	3.048	6.096	Malachite	0.5	Fracture-related	Chalcocite	0.5	Stringer Veins
DAN25005	6.096	12.192	Chalcocite	0.1	Disseminated			
DAN25005	12.192	24.384	Chalcocite	1	Fracture-related			
DAN25005	24.384	25.908	Chalcocite	0.1	Fracture-related			
DAN25005	25.908	28.956	Chalcocite	3	Stringer Veins			
DAN25005	28.956	30.48	Chalcocite	1	Stringer Veins			
DAN25005	30.48	32.004	Chalcocite	10	Veins			
DAN25005	32.004	36.576	Chalcocite	0.5	Stringer Veins			
DAN25005	36.576	38.1	Chalcocite	3	Veins			
DAN25005	38.1	41.148	Chalcocite	0.5	Stringer Veins			
DAN25005	41.148	44.196	Chalcocite	3	Veins			
DAN25005	44.196	48.768	Chalcocite	1	Veins			
DAN25005	48.768	50.292	Chalcocite	1	Disseminated			
DAN25005	50.292	60.96	Chalcocite	3	Veins			
DAN25005	60.96	71.628	Chalcocite	5	Patchy	Bornite	2	Patchy
DAN25005	71.628	88.392	Chalcocite	3	Veins	Bornite	1	Patchy
DAN25005	88.392	91.44	Chalcocite	0.5	Disseminated			
DAN25005	103.632	105.156	Chalcocite	3	Amygdale fill			
DAN25005	120.396	121.92	Bornite	0.5	Disseminated			
DAN25005	147.828	150.876	Chalcocite	0.5	Veins			
DAN25006	7.62	9.144	Chalcocite	3	Amygdale fill			
DAN25006	12.192	18.288	Pyrite	3	Patchy	Bornite	1	Patchy
DAN25006	19.812	24.384	Chalcocite	3	Veins			
DAN25006	24.384	30.48	Chalcocite	1	Veins			
DAN25006	33.528	35.052	Chalcocite	1	Amygdale fill			
DAN25006	42.672	51.816	Chalcocite	3	Veins			
DAN25006	54.864	60.96	Chalcocite	3	Veins			
DAN25006	60.96	65.532	Chalcocite	5	Veins			
DAN25006	65.532	76.2	Chalcocite	3	Veins	Bornite	1	Veins
DAN25006	97.536	103.632	Bornite	1	Veins			
DAN25007	28.956	36.576	Bornite	1	Veins			
DAN25007	36.576	42.672	Bornite	3	Veins			
DAN25007	42.672	47.244	Bornite	1	Veins	Chalcocite	0.5	Veins
DAN25007	47.244	53.34	Bornite	5	Veins	Chalcocite	1	Veins
DAN25007	60.96	77.724	Bornite	5	Veins	Chalcocite	3	Veins
DAN25007	77.724	80.772	Chalcocite	1	Veins			
DAN25007	80.772	82.296	Bornite	10	Disseminated	Chalcocite	5	Disseminated
DAN25007	82.296	94.488	Chalcocite	3	Veins	Bornite	1	Veins
DAN25007	94.488	97.536	Bornite	3	Veins	Chalcocite	1	Veins
DAN25007	97.536	111.252	Bornite	1	Fracture-related	Chalcocite	1	Fracture-related
DAN25007	111.252	121.92	Chalcocite	3	Amygdale fill			

Hole ID	From (m)	To (m)	Mineral 1	Abundance (%)	Mineral Form	Mineral 2	Abundance (%)	Mineral Form
DAN25007	121.92	132.588	Chalcocite	1	Fracture-related			
DAN25007	156.972	160.02	Chalcocite	0.5	Fracture-related			
DAN25008	7.62	9.144	Chalcocite	1	Amygdule fill	Bornite	1	Amygdule fill
DAN25008	9.144	12.192	Bornite	3	Patchy	Chalcocite	1	Patchy
DAN25008	12.192	13.716	Chalcocite	5	Veins	Bornite	3	Veins
DAN25008	13.716	16.764	Chalcocite	1	Veins	Bornite	0.5	Veins
DAN25008	16.764	18.288	Chalcocite	0.5	Disseminated			
DAN25008	18.288	21.336	Bornite	0.5	Disseminated			
DAN25008	21.336	22.86	Chalcocite	3	Veins			
DAN25008	22.86	28.956	Chalcocite	0.5	Fracture-related			
DAN25008	28.956	32.004	Chalcocite	1	Patchy			
DAN25008	32.004	36.576	Chalcocite	0.5	Disseminated			
DAN25008	36.576	50.292	Chalcocite	1	Veins			
DAN25008	50.292	56.388	Chalcocite	3	Veins			
DAN25008	56.388	60.96	Chalcocite	0.5	Disseminated			
DAN25008	60.96	73.152	Chalcocite	1	Amygdule fill			
DAN25008	73.152	83.82	Chalcocite	5	Veins			
DAN25008	83.82	103.63	Chalcocite	0.5	Veins			
DAN25008	103.63	118.87	Chalcocite	0.5	Fracture-related			
DAN25008	118.87	123.44	Chalcocite	0.5	Disseminated			
DAN25008	123.44	128.02	Chalcocite	0.5	Disseminated	Bornite	0.5	Disseminated
DAN25008	128.02	131.06	Chalcocite	10	Disseminated			
DAN25008	131.06	138.68	Chalcocite	3	Disseminated	Bornite	1	Disseminated
DAN25008	138.68	152.4	Chalcocite	5	Veins	Bornite	1	Veins
DAN25008	152.4	164.59	Chalcocite	3	Disseminated	Bornite	1	Disseminated
DAN25008	164.59	169.16	Bornite	3	Veins	Chalcocite	1	Veins
DAN25008	169.16	176.78	Bornite	1	Disseminated	Chalcocite	0.5	Disseminated
DAN25008	176.78	182.88	Chalcocite	3	Veins			

Table 2. Collar information for completed reverse circulation drillholes.

Hole ID	Datum	CRS	Easting	Northing	Elevation	Azimuth	Dip	Depth (m)
DAN25004	NAD83	UTM Zone 11N	525068	7476411	435	150	-65	185.93
DAN25005	NAD83	UTM Zone 11N	525098	7476419	437	150	-45	150.88
DAN25006	NAD83	UTM Zone 11N	525098	7476419	437	150	-65	150.88
DAN25007	NAD83	UTM Zone 11N	525052	7476379	438	150	-65	160.02
DAN25008	NAD83	UTM Zone 11N	525091	7476355	441	284	-75	182.88

Table 3. Table of sulphide abundance as per visual estimation of surface grab samples.

Sample ID	Easting	Northing	Elevation	Sample Type	Rock Type	Mineral Form	Chalcocite (%)	Malachite (%)
V749907	521476.5	7473355	625.9775	Outcrop	Basalt	Veining	15	5
V749908	521494.5	7473377	623.962	Outcrop	Basalt	Veining	5	3
V749909	521507.5	7473394	622.7024	Outcrop	Basalt	Veining, dissemination	20	
V749910	521507.5	7473397	621.6293	Outcrop	Basalt	Veining	10	
V749911	521510.6	7473404	618.7275	Outcrop	Basalt	Veining	5	3
V749912	521526.2	7473494	618.6622	Subcrop	Basalt	Veining, dissemination	5	3

Table 4. Rock chip information for samples included in Figure 1.

Sample ID	Easting	Northing	District	Ag (g/t)	Cu (%)
F005965	512291	7486880	Vision	152	64.02
F005950	552872	7466464	Rocket	14	54.12
F005921	541649	7468525	Thor	34	54.02
F005996	468678	7514161	Wanda	4	24.1

Competent Persons Statement

The information in this report that relates to exploration results, mineral resources or ore reserves is based on information compiled by Roderick McIlree, who is a Fellow of the Australasian Institute of Mining and Metallurgy. Mr McIlree is an employee of White Cliff Minerals. Mr McIlree has sufficient experience which is relevant to the style of mineralisation and type of deposits under consideration and to the activity that he is undertaking to qualify as a Competent Person as defined in the 2012 edition of the 'Australian Code for Reporting Exploration Results, Mineral Resources and Ore Reserves' (the JORC Code). Mr McIlree consents to the inclusion of this information in the form and context in which it appears in this report.

JORC Compliance Statement

Where statement in this announcement refer to exploration results which previously been reported, the Company confirms that it is not aware of any new information or data that materially affects the information included in the original announcements. The Company confirms that the form and context in which the Competent Person's findings are presented have not materially modified from the original market announcements.

Cautionary Statement - Visual Observations

Visual observations of the presence of rock or mineral types and abundance should never be considered a proxy or substitute for petrography and laboratory analyses where mineral types, concentrations or grades are the factor of principal economic interest. Visual observations and estimates also potentially provide no information regarding impurities or deleterious physical properties relevant to valuations. These abundances will be determined more accurately through petrography, assay, and XRF analysis. The observed presence of sulphides does not necessarily equate to copper mineralisation.

Caution Regarding Forward-Looking Statements

This document may contain forward-looking statements concerning White Cliff Minerals. Forward-looking statements are not statements of historical fact and actual events and results may differ materially from those described in the forward-looking statements because of a variety of risks, uncertainties and other factors. Forward-looking statements are inherently subject to business, economic, competitive, political and social uncertainties and contingencies. Many factors could cause the Company's actual results to differ materially from those expressed or implied in any forward-looking information by White Cliff Minerals, or, on behalf of the Company.

Forward-looking statements in this document are based on White Cliff Minerals' beliefs, opinions and estimates of the Company as of the dates the forward-looking statements are made, and no obligation is assured to update forward-looking statements if these beliefs, opinions and estimates should change or to reflect future developments.



About White Cliff Minerals

The **Great Bear Lake** area is Identified as having Canada’s highest probability for the hosting of iron-oxide-copper-gold uranium plus silver-style mineralisation in the Country. Results from the Company’s maiden exploration include **42.6% Cu**, **39.5% Cu** and **38.2g/t Au** from the Phoenix prospect and the **highest-grade silver rock chip** assays in recent history **7.54% Ag** and **5.35% Ag** from Slider

The **Rae Cu-Ag project** contains numerous high grade Cu mineralisation occurrences and hosts all first-order controls for a sediment-hosted copper deposit and includes a historic resource estimate of **4.16 million tons at a grade of 2.96% Cu²**. Highlights from the maiden exploration campaign include **64.02% Cu & 62.02% Cu** from DON and **55.01% Cu & 46.07% Cu** from PAT within the Vision district, and **54.12%**, **53.82%** from Rocket, and **54.02%** from Thor.

The historic resource estimate at the Danvers Prospect, is a historic estimate and not in accordance with the JORC Code. The Company notes that the estimate and historic drilling results dated 1967 and 1968 are not reported in accordance with the NI 43-101 or JORC Code 2012. A competent person has not done sufficient work to disclose the estimate/results in accordance with the JORC Code 2012. It is possible that following further evaluation and/or exploration work that the confidence in the estimate and reported exploration results may be reduced when reported under the JORC Code 2012. The supporting information provided in the announcement dated 26 November 2024 continues to apply and has not materially changed.

Enquiries

Troy Whittaker
 Managing Director
 P: +61 8 9486 4036
 E: info@wcminerals.com.au

² See ASX Announcement dated 26 November 2024 “WCN Acquires Highly Prospective and Proven Copper Project”

APPENDIX 1.

The following Tables are provided to ensure compliance with the JORC Code (2012 Edition) requirements for the reporting of Exploration Results at the Rae Copper Project.

Section 1: Sampling Techniques and Data

(Criteria in this section applies to all succeeding sections)

CRITERIA	JORC CODE EXPLANATION	COMMENTARY
Sampling techniques	<ul style="list-style-type: none"> Nature and quality of sampling (e.g., cut channels, random chips, or specific specialised industry standard measurement tools appropriate to the minerals under investigation, such as downhole gamma sondes, handheld XRF instruments, etc.). These examples should not be taken as limiting the broad meaning of sampling. Include reference to measures taken to ensure sample representivity and the appropriate calibration of any measurement tools or systems used. Aspects of the determination of mineralisation that are Material to the Public Report. In cases where 'industry standard' work has been done this would be relatively simple (e.g., 'reverse circulation drilling was used to obtain 1 m samples from which 3 kg was pulverised to produce a 30 g charge for fire assay'). In other cases, more explanation may be required, such as where there is coarse gold that has inherent sampling problems. Unusual commodities or mineralisation types (e.g., submarine nodules) may warrant disclosure of detailed information. 	<ul style="list-style-type: none"> Reverse circulation (RC) drilling has been conducted in 2025. The drillholes were sampled in their entirety on 5-foot (1.52m) intervals. Returned material was passed through a level 3-tier riffle splitter, producing a 12.5% sample split and a retention sample. Representative chips for logging were taken from the retention sample by sieving from the retention sample. Chips are washed at the camp location, prior to storage in chip trays. Samples from the RC drilling are sent to ALS Yellowknife for preparation under code PREP-31B, which entails crushing to 70% less than 2mm, riffle splitting 1kg, with the split pulverised to better than 85% passing 75 microns. Followed by multi-element ICP-MS analysis after 4-acid digestion (ME-MS61) and fire assay gold (Au-ICP21). 2024 rock chip samples from the Nunavut based Rae Copper Project were sent to Yellowknife via secure air freight, and received by an employee of Aurora Geosciences Ltd., who ensured sample security and maintained custody until delivered to ALS laboratories, Yellowknife for preparation. Samples are prepared under code PREP-31D and analysed by ME-ICPORE, an analysis package designed for massive sulphides. Overassay (>40% Cu) are undertaken by Cu-VOL61. Samples with visible native copper were analysed by Cu-SCR21. All samples underwent gold analysis by 30g fire assay and ICP-AES under code Au-ICP21. Final assay results and certificates are sent by ALS directly to both the WCN senior geologist and country manager to undertake independent quality control before release of results. Historic drilling completed by Kaizen Discovery Corp. Diamond drillhole CP15-DD009, half core samples were sent to ALS Minerals preparatory lab in Yellowknife, N.T., followed by secure transport to and multi element assay at ALS's laboratory in North Vancouver, B.C. Analytical procedures consisted of 33 Element Four Acid ICP-AES, followed by automatic Ore Grade Four Acid ICP-AES for all copper over limits.
Drilling techniques	<ul style="list-style-type: none"> Drill type (e.g., core, reverse circulation, open-hole hammer, rotary air blast, auger, Bangka, sonic etc.) and details (e.g., core diameter, triple or standard tube, depth of diamond tails, face-sampling bit or other type, whether core is orientated and if so, by what method, etc.). 	<ul style="list-style-type: none"> 2025 drilling was completed by reverse circulation (RC) drilling methods by Northspan Explorations Ltd. utilising a heli-portable hornet machine. 5-foot rod intervals with a 3.5-inch face sampling hammer with inner-tube assembly and 3.5-inch string diameter. Historic drilling completed by Kaizen Discovery Corp. in 2015 utilised a diamond drilling rig operated by Peak Drilling contractors. NQ2 diameter was used. Core-orientation procedure is unknown. Standard or triple tube drilling is unknown.
Drill sample recovery	<ul style="list-style-type: none"> Method of recording and assessing core and chip sample recoveries and results assessed. Measures taken to maximise sample recovery and ensure representative nature of the samples. Whether a relationship exists between sample 	<ul style="list-style-type: none"> 2025 RC drilling by White Cliff Minerals changes sample recovery and sample condition at the rig site during drilling operation. An estimation (qualitative) of recovery was completed on the sample returned from the complete drill interval if loss is believed to have occurred. Reasons for loss discussed between rigsite geologist and driller. Wet samples have not been encountered. Sample bias is believed to be negligible due to a preferential loss of fine/coarse material. Riffle splitting of the returned material to generate a sample produces a homogenous sample

CRITERIA	JORC CODE EXPLANATION	COMMENTARY
	<p><i>recovery and grade and whether sample bias may have occurred due to preferential loss/gain of fine/coarse material.</i></p>	<p>for the interval, ensuring representative sampling. Field duplicate samples are taken by spearing the homogenised retention sample, post riffle splitting.</p> <ul style="list-style-type: none"> 2015 Kaizen Discovery Corp - Core recovery was calculated as the difference between drilled intervals between drillers core blocks and the length of recovered core. Representative core samples were taken by sampling half core, cutting the core along the long axis with an electric powered core saw. No relationship is observed between recovery and grade for drillhole CP15_DD009 which returned 99.5% core recovery.
<p>Logging</p>	<ul style="list-style-type: none"> <i>Whether core and chip samples have been geologically and geotechnically logged to a level of detail to support appropriate Mineral Resource estimation, mining studies and metallurgical studies.</i> <i>Whether logging is qualitative or quantitative in nature. Core (or costean, channel, etc) photography.</i> <i>The total length and percentage of the relevant intersections logged.</i> 	<ul style="list-style-type: none"> 2025 RC drilling by White Cliff Minerals - All intervals returned are logged for lithology and mineralisation at the camp location. 2024 rock chip sampling by White Cliff Minerals - sampling was undertaken on surface alongside lithologic, alteration and mineralisation logging. Data input presented in tabulated form alongside coordinates and sample numbers. High resolution photographs are available for RC chips from the 2025 program. 2015 Kaizen Discovery Corp – core was logged for lithology, alteration, mineralisation and structure. All recovered intervals were logged. 2015 Kaizen Discovery Corp – core photography is not available. Photographs of select intervals are available.
<p>Sub-sampling techniques and sample preparation</p>	<ul style="list-style-type: none"> <i>If core, whether cut or sawn and whether quarter, half or all core taken.</i> <i>If non-core, whether riffled, tube sampled, rotary split, etc and whether sampled wet or dry.</i> <i>For all sample types, the nature, quality and appropriateness of the sample preparation technique.</i> <i>Quality control procedures adopted for all sub-sampling stages to maximise representivity of samples.</i> <i>Measures taken to ensure that the sampling is representative of the in-situ material collected, including for instance results for field duplicate/second-half sampling.</i> <i>Whether sample sizes are appropriate to the grain size of the material being sampled.</i> 	<ul style="list-style-type: none"> 2025 RC drilling by White Cliff Minerals – Holes were sampled in full using 1.52m intervals as per the 5-foot rod lengths of the rig. Assay samples were collected as a 12.5% split from a 3-tier riffle splitter used to ensure a homogenous and representative sample of the drilled interval. 2025 RC drilling by White Cliff Minerals – sample size is deemed appropriate to the base metal mineralisation which is hosted by fine to medium grained copper sulphides and their associated secondary minerals (malachite, azurite) 2024 rock chip sampling by White Cliff Minerals - Rock chip sample sizes are deemed appropriate for the style of mineralisation targeted and able to quantify the precious and base metal content. A range of 0.56-1.96 kg of material was assayed with an average of 1.1kg. 2015 Kaizen Discovery Corp – Standard half core intervals were assayed. Quarter core duplicate samples were taken at specified intervals downhole as part of the quality assurance and control protocols. A total of 6 quarter core samples were taken within the reported drillhole.
<p>Quality of assay data and laboratory tests</p>	<ul style="list-style-type: none"> <i>The nature, quality and appropriateness of the assaying and laboratory procedures used and whether the technique is considered partial or total.</i> <i>For geophysical tools, spectrometers, handheld XRF instruments, etc., the parameters used in determining the analysis including instrument make and model, reading times, calibrations factors applied and their derivation, etc.</i> 	<ul style="list-style-type: none"> 2025 RC drilling by White Cliff Minerals – Samples are sent to ALS Yellowknife for preparation under code PREP-31B, which entails crushing to 70% less than 2mm, riffle splitting 1kg, with the split pulverised to better than 85% passing 75 microns. Followed by multi-element ICP-MS analysis after 4-acid digestion (ME-MS61) and fire assay gold (Au-ICP21). 4-acid digestion is considered a near-total digestion except for barite, rare earth oxides, columbite-tantalite, and titanium, tin and tungsten minerals, which may not be fully digested. 2025 RC drilling by White Cliff Minerals – A schedule of quality control samples is inserted into the sample stream at a rate of 10%, including field duplicates, coarse blanks (OREAS C26e) and certified reference samples (OREAS 930 and 922). Field duplicates were taken from the retention sample by spearing the homogenised chips after

CRITERIA	JORC CODE EXPLANATION	COMMENTARY
	<ul style="list-style-type: none"> <i>Nature of quality control procedures adopted (e.g., standards, blanks, duplicates, external laboratory checks) and whether acceptable levels of accuracy (i.e., lack of bias) and precision have been established.</i> 	<ul style="list-style-type: none"> riffle splitting. 2024 rock chip sampling by White Cliff Minerals - Sent to Yellowknife via secure air freight, and received by an employee of Aurora Geosciences Ltd., who ensured sample security and maintained custody until delivered to ALS laboratories, Yellowknife for preparation. Samples are prepared under code PREP-31D and analysed by ME-ICPORE, an analysis package designed for massive sulphides. Overassay (>40% Cu) are undertaken by Cu-VOL61. Samples with visible native copper were analysed by Cu-SCR21. All samples underwent gold analysis by 30g fire assay and ICP-AES under code Au-ICP21. 2024 rock chip sampling by White Cliff Minerals - Blanks (BL-10 CDN Laboratories) were inserted at a rate of 4%. No field duplicates or certified reference materials were inserted into the sample stream. 2015 Kaizen Discovery Corp – Samples were analysed by ALS laboratories Vancouver using prep code PREP-31B which entails crushing to 70% less than 2mm, riffle splitting 1kg, with the split pulverised to better than 85% passing 75 microns. Analysis by ME-ICP61, a four-acid (near total) digestion followed by multi-element ICP-AES finish. A total of 6 quarter core samples were taken within the reported drillhole.
Verification of sampling and assaying	<ul style="list-style-type: none"> <i>The verification of significant intersections by either independent or alternative company personnel.</i> <i>The use of twinned holes.</i> <i>Documentation of primary data, data entry procedures, data verification, data storage (physical and electronic) protocols.</i> <i>Discuss any adjustment to assay data.</i> 	<ul style="list-style-type: none"> 2025 RC drilling by White Cliff Minerals – Primary data collection is completed by White Cliff Minerals employees or contracting geologists from Aurora Geosciences Ltd. Data is entered into Excel logging templates and reviewed by White Cliff Minerals senior geologist. Data is then stored on a cloud server with 2-factor authorisation. All received results are reviewed by the senior geologist, country manager and designated competent person. No independent review of the historic drilling has been completed by personnel independent to White Cliff Minerals. 2015 Kaizen Discovery Corp – Data was entered into Excel logging templates. No information regarding data verification and storage protocols are known. No adjustment to assay data, reported intervals are calculated by weighted average accounting for sample length and reported concentration. No twin holes are reported.
Location of data points	<ul style="list-style-type: none"> <i>Accuracy and quality of surveys used to locate drill holes (collar and down-hole surveys), trenches, mine workings and other locations used in Mineral Resource estimation.</i> <i>Specification of the grid system used.</i> <i>Quality and adequacy of topographic control.</i> 	<ul style="list-style-type: none"> 2025 RC drilling by White Cliff Minerals – Collar locations were pegged out using a Garmin GPSMAP 66sr (Multiband) with foresight and backsight stakes demarcating the azimuth. 2024 rock chip sampling by White Cliff Minerals - Locations of reported rock chip assay results are in NAD83 / UTM Zone 11 N. Positions of samples determined in the field by handheld Garmin GPSMAP 66sr or Garmin GPSMAP 65 units. 2015 Kaizen Discovery Corp – No note of collar survey method or method of downhole surveying. Topographic control is provided by a DTM created from the Canvec data series, an open-source dataset from the Government of Canada, Natural Resources. Data provided as ESRI shapefile with 10m contours.
Data spacing and distribution	<ul style="list-style-type: none"> <i>Data spacing for reporting of Exploration Results.</i> <i>Whether the data spacing, and distribution is sufficient to establish the degree of geological and grade continuity appropriate for the Mineral Resource and Ore Reserve estimation procedure(s) and classifications applied.</i> <i>Whether sample compositing has been applied.</i> 	<ul style="list-style-type: none"> 2025 RC drilling by White Cliff Minerals – Maiden drilling program spacing of collars between 28 and 60 m at the Danvers target area. Drilling at the Hulk target is planned on a regional scale with kilometres between holes. Additional work will be required at all targets to establish continuity for inclusion in estimation to JORC standards. 2024 rock chip sampling by White Cliff Minerals - Reported rock chip results are spaced based on locations of prospective lithologies, alterations and visible mineralisation. 2015 Kaizen Discovery Corp – Drillhole CP15_DD009 formed part of a regional drilling campaign, with drillhole CP15_DD008 located 10 km east. This drilling does not have sufficient data density to inform geological or grade continuity. No sample compositing applied.
Orientation of data in relation to geological	<ul style="list-style-type: none"> <i>Whether the orientation of sampling achieves unbiased sampling of possible structures and the</i> 	<ul style="list-style-type: none"> 2025 RC drilling by White Cliff Minerals – Mineralisation at Danvers is hosted within a breccia/vein system which strikes NE/SW with a variable dip to the NW inferred. Drilling completed with azimuth towards the SE, perpendicular to the strike of the inferred mineralisation. Oblique intersections of the hole and the mineralisation

CRITERIA	JORC CODE EXPLANATION	COMMENTARY
structure	<p><i>extent to which this is known, considering the deposit type.</i></p> <ul style="list-style-type: none"> <i>If the relationship between the drilling orientation and the orientation of key mineralised structures is considered to have introduced a sampling bias, this should be assessed and reported if material.</i> 	<p>is expected, and thus all reported intervals are drilled widths, not true thicknesses. More work will be required to understand the trend of mineralisation at Danvers and report true thicknesses. Drilling at Danvers to target the flow top replacements is conducted with vertical holes to intersect the stacked basalt flows near perpendicular. Drilling at the Hulk target is conducted on vertical drillholes to intersect the <5 degree north dipping sediments near perpendicular.</p> <ul style="list-style-type: none"> 2024 rock chip sampling by White Cliff Minerals - Grab sampling is conducted where mineralisation or alteration of interest is observed. Sampling is conducted as a composite of the outcrop to produce a representative sample. 2015 Kaizen Discovery Corp – Reported drillhole is vertical, this is deemed appropriate to test the shallow north dipping sediments.
Sample security	<ul style="list-style-type: none"> <i>The measures taken to ensure sample security.</i> 	<ul style="list-style-type: none"> 2025 RC drilling by White Cliff Minerals – Samples are bagged at the rig site with the corresponding sample tag placed inside the bag and secured by cable ties. Samples were placed into larger rice sacks, which were labelled and cable tied closed. Samples were stored at the sample farm in a remote field camp before transporting to Yellowknife by chartered flight where the samples are met by an employee of Aurora Geosciences Ltd and delivered directly to ALS preparation laboratory Yellowknife. ALS Laboratory conduct checks to ensure the delivered samples match the list of samples sent for assay as per the submittal form and all are accounted for. 2015 Kaizen Discovery Corp – No note of measures taken to ensure sample security.
Audits or reviews	<ul style="list-style-type: none"> <i>The results of any audits or reviews of sampling techniques and data.</i> 	<ul style="list-style-type: none"> No independent site visit or audit/review of the procedures/assay results has been conducted.

Section 2: Reporting of Exploration Results

(Criteria listed in the preceding section also apply to this section)

Criteria	JORC Code explanation	Commentary
Mineral tenement and land tenure status	<ul style="list-style-type: none"> <i>Type, reference name/number, location and ownership including agreements or material issues with third parties such as joint ventures, partnerships, overriding royalties, native title interests, historical sites, wilderness or national park and environmental settings.</i> <i>The security of the tenure held at the time of reporting along with any known impediments to obtaining a licence to operate in the area.</i> 	<ul style="list-style-type: none"> The Rae Copper Project is made up of 93 mineral claims in 3 blocks and 1 mineral lease in the Kitikmeot region of Nunavut, northern Canada. The claims and lease cover a total area of 1228 km². All mineral claims are in good standing. In November 2024 White Cliff Minerals acquired mineral lease L-2797 from Victoria Copper Inc. granting 100% ownership of the project. Victoria Copper Inc. retained a 1% net smelter royalty (NSR) over production from the lease. White Cliff Minerals can buy back 50% of the NSR for CAD \$1 million in cash and has right of first refusal with respect to the sale of the remaining 50% of the NSR (0.5% NSR). White Cliff Minerals is in possession of a type B water license issued by the Nunavut Water Board and a Class A Land Use Permit granted by the Crown-Indigenous Relations and Northern Affairs Canada allowing the completion of exploration drilling and camp establishment. White Cliff Minerals have obtained permission from the Kitikmeot Inuit Association to conduct exploration on this property.
Exploration done by other parties	<ul style="list-style-type: none"> <i>Acknowledgment and appraisal of exploration by other parties.</i> 	<ul style="list-style-type: none"> Tools and idols, made from native copper found in the Coppermine Region have been worked and traded by the local Inuit population going back centuries. The area first came to the attention of European and English explorers in the 17th century. In 1771 Samuel Hearne reported finding a four-pound native copper nugget at surface. The Coppermine River area was first staked in 1929 and continued slowly until 1966 when, due to the discovery of

Criteria	JORC Code explanation	Commentary
		<p>several high-grade surface deposits of copper. By late 1967 over 40,000 claims were lodged by more than 70 different companies (E.D. Kindle, 1972). In his report, Kindle locates and gives a brief description of over 80 high grade copper occurrences.</p> <ul style="list-style-type: none"> The largest copper deposit in the area is called Area 47 or the DOT 47 Lode in a vertical, tabular body 1,500 feet long and 35 feet wide along one of the faults of the Teshierpi fault zone (Kindle, 1972). The DOT 47 deposit was estimated to host 4,162,000 tons grading 2.96 % copper remaining open at depth and to the southwest. The definition of this deposit by Coppermine River Limited marked the largest exploration effort to date. Mapping and exploration in the area were conducted over several campaigns by regional workers and individual companies until 1970, when the area was mapped in detail by W.A. Barager and J.A. Donaldson. During this time, Barager conducted a litho-geochemical study of the Coppermine River basalts. E.D. Kindle followed this work and produced the first major collaboration of mineralisation, geology, and geologic history in 1972. Following this, Ross and Kerans (1989) mapped Middle Proterozoic sediments of the Hornby Bay and Dismal Lake Groups to the south and west of the region. Exploration and development persisted sporadically between 1990 - 2010, when companies started to utilise geophysics at the Area 47 and MuskoX Intrusion to the southeast of the project area, the latter of which witnessed drilling for several years. Mineral claims in the region continued to lapse because of depressed economic conditions, until most of the Coppermine area was free and available for staking. Exploration 2013-2015 was conducted by Tundra Copper Corporation, with work from 2013-2014 detailed in Assessment Report 086024. The work completed included geological mapping, rock chip sampling and later diamond drilling in 2015 consisting of 2060 m. Of importance is the result of a regional drilling program, testing the basal portion of the Rae Group Sediments. A series of 7 vertical drillholes tested the Rae Group – Coppermine River Group unconformity, targeting sediment-hosted copper deposits for a total of 1949 m. The final drillhole of the program, furthest to the west, drillhole CP15_DD009 intercepted 29 m at 0.57 % Cu from 197 m depth and noted a zonation of copper sulphides of chalcocite-bornite-chalcopyrite upwards from the unconformity. This interval and zonation of copper sulphides is a significant proof of concept for sediment hosted copper deposits within the Rae Group, possessing similarities with the Central African Copperbelt and Kupferschiefer districts.
Geology	<ul style="list-style-type: none"> <i>Deposit type, geological setting and style of mineralisation.</i> 	<ul style="list-style-type: none"> The Rae Copper Project is located within the north dipping Coppermine Homocline. It unconformably rests on the metamorphic and plutonic rocks of the ca. 1.88-1.84 Ga Wopmay Orogen (Barager et al, 1996). The Hornby Bay Group consists of continental sedimentary and volcanic strata overlain by transitional marine sedimentary rocks of the Dismal Lakes Group. The Coppermine River Group overlies these older sedimentary groups and form a thick sequence of continental flood basalts capped by red bed sandstones. A further unconformity is present where the Rae Group, a sedimentary package sits above the Coppermine River Group, defining a return to marine conditions with a possible age of sedimentation onset of 1070 Ma (Rainbird et al, 2020). Crosscutting the Coppermine River Group and overlying Rae Group are the Coronation Sills, gabbroic composition and believed to have been emplaced at 723 +/- 4Ma (Heaman et al, 1992). Mineralisation in the Rae Copper Project comprises a variety of styles within both the Copper Creek Formation basalts and the overlying basal Rae Group sediments. Chalcocite dominant vein and breccia systems, flow top replacements and sedimentary hosted stratiform copper. Specifically, the reduced-facies sub type of sediment hosted copper deposits, akin to the Central African Copperbelt.

Criteria	JORC Code explanation	Commentary
Drill hole information	<ul style="list-style-type: none"> A summary of all information material to the understanding of the exploration results including a tabulation of the following information for all Material drill holes: <ul style="list-style-type: none"> easting and northing of the drill hole collar elevation or RL (Reduced Level – elevation above sea level in metres) of the drill hole collar dip and azimuth of the hole, down hole length and interception depth, hole length. If the exclusion of this information is justified on the basis that the information is not Material and this exclusion does not detract from the understanding of the report, the Competent Person should clearly explain why this is the case. 	<ul style="list-style-type: none"> Collar information for the relevant drillholes is included in table form in this release.
Data aggregation methods	<ul style="list-style-type: none"> In reporting Exploration Results, weighting averaging techniques, maximum and/or minimum grade truncations (e.g., cutting of high grades) and cut-off grades are usually Material and should be stated. Where aggregate intercepts incorporate short lengths of high-grade results and longer lengths of low-grade results, the procedure used for such aggregation should be stated and some typical examples of such aggregations should be shown in detail. The assumptions used for any reporting of metal equivalent values should be clearly stated. 	<ul style="list-style-type: none"> Reported copper intervals were calculated using a length weighted average. A cut of grade of 2% Cu was utilised for the historic estimate. No significantly high-grade intervals are reported for the drillholes, no data aggregation techniques have been applied. No metal equivalent values are being used.
Relationship between mineralisation widths and intercept lengths	<ul style="list-style-type: none"> These relationships are particularly important in the reporting of Exploration Results. If the geometry of the mineralisation with respect to the drill hole angle is known, its nature should be reported. If it is not known and only the down hole lengths are reported, there should be a clear statement to this effect (e.g., ‘down hole length, true width not known’). 	<ul style="list-style-type: none"> 2025 RC drilling by White Cliff Minerals – Reported results are treated as drilled widths not true thicknesses. 2015 Kaizen Discovery Corp – The downhole width is reported for CP15_DD009, which is interpreted to be very close to true width given the near horizontal orientation of sedimentary bedding which is controlling copper mineralisation. The vertical drillhole is fit for purpose.
Diagrams	<ul style="list-style-type: none"> Appropriate maps and sections (with scales) and tabulations of intercepts should be included for any significant discovery being reported These should include but not be limited to a plan view of drill hole collar locations and appropriate sectional views. 	<ul style="list-style-type: none"> Location maps and sections provided within the release with relevant exploration information contained.

Criteria	JORC Code explanation	Commentary
Balanced reporting	<ul style="list-style-type: none"> Where comprehensive reporting of all Exploration Results is not practicable, representative reporting of both low and high grades and/or widths should be practiced avoiding misleading reporting of Exploration Results. 	<ul style="list-style-type: none"> All exploration results have been reported. The reporting of exploration results is considered balanced by the competent person.
Other substantive exploration data	<ul style="list-style-type: none"> Other exploration data, if meaningful, should be reported including geological observations; geophysical survey results; geochemical survey results; bulk samples – size and method of treatment; metallurgical test results; bulk density, groundwater, geotechnical and rock characteristics; potential deleterious or contaminating substances. 	<ul style="list-style-type: none"> 2,427 line-km of MobileMT airborne geophysics was completed during the 2024 field program at the Rae Copper Project. The survey was conducted by Expert Geophysics using an AS 350 B2 SD2 helicopter of Capital Helicopters. The survey lines were oriented E/W and spaced at 400m intervals, with tie lines running N/S and spaced 4000m apart. The average survey speed was 23m/s with a helicopter terrain clearance of 152m. The magnetometer was on average 81m above terrain and 62m for the EM sensor. Data was controlled for quality, interpolated and underwent 2D inversion, completed by Expert Geophysics.
Further work	<ul style="list-style-type: none"> The nature and scale of planned further work (e.g., tests for lateral extensions or depth extensions or large-scale step-out drilling). Diagrams clearly highlighting the areas of possible extensions, including the main geological interpretations and future drilling areas, provided this information is not commercially sensitive. 	<ul style="list-style-type: none"> Drilling at the Rae Project is ongoing and will continue to test the Danvers target area, and the Hulk target for sediment hosted copper mineralisation. Further work may involve reassessment of the geophysics data provided by the 2024 MobileMT survey, using the drilling data and new subsurface knowledge to refine geophysical targets. A detailed surface sampling campaign will also be conducted when conditions allow, focusing on the basal Rae formation and the wider area around the Danvers deposit.

Section 3: Estimation and Reporting of Mineral Resources

(Criteria listed in section 1, and where relevant in section 2, also apply to this section)

Criteria	JORC Code explanation	Commentary
Database integrity	<ul style="list-style-type: none"> Measures taken to ensure that data has not been corrupted by, for example, transcription or keying errors, between its initial collection and its use for Mineral Resource estimation purposes. Data validation procedures used. 	<ul style="list-style-type: none"> No information is available regarding the transcription of data from data collection to estimation given the historic nature of the estimate. Certain drillhole locations, included in the historic estimate were verified by Coronation Minerals' personnel in 2003/2005.
Site visits	<ul style="list-style-type: none"> Comment on any site visits undertaken by the Competent Person and the outcome of those visits. If no site visits have been undertaken indicate why this is the case. 	<ul style="list-style-type: none"> The JORC Competent Person has not visited the site which hosts the historic estimation as the project has been recently acquired.
Geological interpretation	<ul style="list-style-type: none"> Confidence in (or conversely, the uncertainty of) the geological interpretation of the mineral deposit. Nature of the data used and of any assumptions made. The effect, if any, of alternative interpretations on 	<ul style="list-style-type: none"> The project is an epigenetic, fault breccia hosted copper-silver deposit. It also hosts intervals of replacement style mineralization within vesicular flow tops of basalt flows. The deposit style is well recognized within the Copper Creek Basalt Formation. Due to the historic nature of the estimate and lack of review of drill core or other evidence an assumption is made that the assay and geological interpretation is fit for purpose within the historic estimate. Alternative interpretations of the deposit style are not believed to have altering effects on the historic estimation.

Criteria	JORC Code explanation	Commentary
	<p><i>Mineral Resource estimation.</i></p> <ul style="list-style-type: none"> <i>The use of geology in guiding and controlling Mineral Resource estimation.</i> <i>The factors affecting continuity both of grade and geology.</i> 	<ul style="list-style-type: none"> The orientation of the main breccia body, in line with the major NE/SW trending Teshierpi Fault Zone guided the orientation of historic drilling which was used during the historic estimate. Knowledge of the shallow NE dipping basalt flows informed the drilling and estimation of the flow-top replacement style mineralization. Continuity in the breccia and host structure depend on the intersection of major and minor faults and fracture zones. Continuity of grade within the flow top replacement bodies is dependent on the primary porosity of the basalt flow tops and their proximity to feeder structures/the main breccia zone.
Dimensions	<ul style="list-style-type: none"> <i>The extent and variability of the Mineral Resource expressed as length (along strike or otherwise), plan width, and depth below surface to the upper and lower limits of the Mineral Resource.</i> 	<ul style="list-style-type: none"> The historic estimate covers an average of 40 to 45 ft width with local swelling to over 100 ft. The top of the body appears to have a horizontal attitude along strike with the bottom of defined zones gently plunging to the southwest. The estimate covered 1528 ft strike length with a vertical depth of 600 ft.
Estimation and modelling techniques	<ul style="list-style-type: none"> <i>The nature and appropriateness of the estimation technique(s) applied and key assumptions, including treatment of extreme grade values, domaining, interpolation parameters and maximum distance of extrapolation from data points. If a computer assisted estimation method was chosen include a description of computer software and parameters used.</i> <i>The availability of check estimates, previous estimates and/or mine production records and whether the Mineral Resource estimate takes appropriate account of such data.</i> <i>The assumptions made regarding recovery of by-products.</i> <i>Estimation of deleterious elements or other non-grade variables of economic significance (e.g. sulphur for acid mine drainage characterisation).</i> <i>In the case of block model interpolation, the block size in relation to the average sample spacing and the search employed.</i> <i>Any assumptions behind modelling of selective mining units.</i> <i>Any assumptions about correlation between variables.</i> <i>Description of how the geological interpretation was used to control the resource estimates.</i> <i>Discussion of basis for using or not using grade cutting or capping.</i> <i>The process of validation, the checking process used, the comparison of model data to drill hole data, and use of reconciliation data if available.</i> 	<ul style="list-style-type: none"> The historic estimate did not use computer software and was completed using plan view and 2D sections along completed drill fences. The estimation technique is deemed appropriate for the historic nature of the estimate. The areas within the outlined blocks were calculated by taking 3 measurements of each block with a planimeter and averaging the readings. Drill-indicated reserves were computed from specific measurements based on the following: <ul style="list-style-type: none"> a) The length of copper bearing diamond drill core intersections b) The weighted average grade of the above intersections c) The area of influence of diamond drill core intersections (see No. 5) d) The horizontal projection of the area of influence (see No. 6) e) A calculated tonnage factor (see No. 2) f) A total of 30,337 feet of diamond drilling on the 47 Zone and its southwest extension with the holes on the average 100 feet apart on section Inferred reserves were calculated in the same manner as indicated reserves but are based on evidence of continuity as suggested by diamond drilling and/or longitudinal projection The area of grade influence of each diamond drill hole intersection on a particular section was extended one half way to adjacent holes on the same section of 50 feet beyond the top and bottom hole unless geological evidence suggested that longer projections were justified The horizontal distance of grade and area projection was taken as half the distance to adjoining sections. The ore was projected beyond the last sections on each end of the deposit a distance equal to half the distance to the last adjoining section The grade for the inferred reserve blocks was calculated from the average grade or grades of the adjoining block or blocks The elevations to which reserves were projected on each section were determined from a longitudinal projection of the orebody On both plan and sections of copper bearing diamond drill holes straight wall ore limits are assumed to prevail between each drill intersection There are no available check estimates. The by-product silver was estimated for each 10% contained copper there is approximately 1 oz of silver. This was determined by metallurgical testwork on diamond drill core samples conducted by Lakefield Research, silver was not routinely assayed during drilling and thus not included in the estimate.

Criteria	JORC Code explanation	Commentary
		<ul style="list-style-type: none"> The geological model, created in 2D sections along drill fences influenced the estimate through creation of blocks controlled by either the breccia zone or flow top replacement, which correlated to the drillhole intersections. These blocks were then combined per section. A 2% copper cut of grade was applied.
Moisture	<ul style="list-style-type: none"> Whether the tonnages are estimated on a dry basis or with natural moisture, and the method of determination of the moisture content. 	<ul style="list-style-type: none"> The moisture content for tonnage calculations is unknown. No note of dry basis estimation is recorded, and given the historic nature of the estimate it is assumed a natural moisture basis was used.
Cut-off parameters	<ul style="list-style-type: none"> The basis of the adopted cut-off grade(s) or quality parameters applied. 	<ul style="list-style-type: none"> A 2 % copper cut-off grade was included in the estimate.
Mining factors or assumptions	<ul style="list-style-type: none"> Assumptions made regarding possible mining methods, minimum mining dimensions and internal (or, if applicable, external) mining dilution. It is always necessary as part of the process of determining reasonable prospects for eventual economic extraction to consider potential mining methods, but the assumptions made regarding mining methods and parameters when estimating Mineral Resources may not always be rigorous. Where this is the case, this should be reported with an explanation of the basis of the mining assumptions made. 	<ul style="list-style-type: none"> Mining parameters detailed in this section were taken from the report “A Preliminary Feasibility Report on the Hope Lake Copper Deposit, Mackenzie. Assessment Report INAC (Exploration Report), Bracken, J M; Seasor, R W; Neal, H E; Leslie, C A; Pullen, T C. April 1, 1968”. The report defines a 1000 – 1500 ton per day plant size operating 350 days per year. The mining method is described as consisting of open stope for the vertical breccia body and room and pillar methods through the flow top replacement bodies. A dilution of 10% was accounted for in the historic estimate, adding in material calculated to be 0.6% Cu. A case for open pit mining was not pursued in any detail.
Metallurgical factors or assumptions	<ul style="list-style-type: none"> The basis for assumptions or predictions regarding metallurgical amenability. It is always necessary as part of the process of determining reasonable prospects for eventual economic extraction to consider potential metallurgical methods, but the assumptions regarding metallurgical treatment processes and parameters made when reporting Mineral Resources may not always be rigorous. Where this is the case, this should be reported with an explanation of the basis of the metallurgical assumptions made 	<ul style="list-style-type: none"> The use of the term “ore” in the following section is not taken by White Cliff Minerals to imply economic extraction of metal contents, however, is used to describe the processing outlined in the referenced report. The completion of additional work and evaluation may not define JORC compliant resources/reserves. The report “A Preliminary Feasibility Report on the Hope Lake Copper Deposit, Mackenzie. Assessment Report INAC (Exploration Report), Bracken, J M; Seasor, R W; Neal, H E; Leslie, C A; Pullen, T C. April 1, 1968” defines a mining scenario of a 1500 ton per day mill. The report notes similarities of the “ore” with that treated at Roan Antelope in northern Rhodesia (operated since 1931 to date of 1968 report) with the successful operations at Mufulira and Roan Antelope adding support and confidence to the present preliminary design. Testwork completed by Lakefield Research and detailed in the 1968 Preliminary Feasibility Report conducted 43 bench scale grinding and flotation tests on 5 composites from 1967 drillcore totalling 2462 feet of material and found no other metals apart from copper and silver in significant quantities. Metallurgical testwork outlined 55-66% copper concentrates with copper recoveries of 85-95% depending on the grind and flowsheet. Silver content in the concentrate varies from 4.5 to 5.5 oz/t with recoveries in the range of 82 – 95% Ag. The concentrate is chiefly chalcocite with considerable bornite, minor chalcopyrite, covellite and pyrite. Very little to no pyrrhotite has been detected. An excerpt from the report states “The chalcocite and bornite are readily floated with preliminary indications that a coarse high-grade concentrate

Criteria	JORC Code explanation	Commentary
		can be removed after the rod mill or ball mill. The very low pyrite and pyrrhotite content helps the flotation and does not require a depressant for these sulphides. Flotation time is considered normal to fast for this ore". A processing flowsheet is presented with the following components, conveying of ore to primary jaw crusher, followed by crushing to a fine ore storage unit, grinding of ore to 50% minus 325 mesh before flotation by ball/rod mills, with possibility of a coarse copper concentrate "scalp off", 2 banks of floatation equipment each consisting of 4 rougher and 5 scavenger cells before movement into thickening and filtering systems.
Environmental factors or assumptions	<ul style="list-style-type: none"> Assumptions made regarding possible waste and process residue disposal options. It is always necessary as part of the process of determining reasonable prospects for eventual economic extraction to consider the potential environmental impacts of the mining and processing operation. While at this stage the determination of potential environmental impacts, particularly for a greenfields project, may not always be well advanced, the status of early consideration of these potential environmental impacts should be reported. Where these aspects have not been considered this should be reported with an explanation of the environmental assumptions made. 	<ul style="list-style-type: none"> The historic estimate and associated pre-feasibility study notes the use of a tailings thickener, which will allow for recirculation of process water, limiting required extraction from nearby water sources. An area, to the north of the deposit was highlighted for use as a tailings area within a natural depression. The deposit is dominated by chalcocite and bornite, zoning outwards to chalcopyrite and pyrite sulphide assemblages. Given the acid generating potential of pyrite when exposed to the atmosphere this should be mitigated when designing waste storage (tailings) facilities. The arctic environment, and presence of well-established permafrost will also be accounted for in future studies.
Bulk density	<ul style="list-style-type: none"> Whether assumed or determined. If assumed, the basis for the assumptions. If determined, the method used, whether wet or dry, the frequency of the measurements, the nature, size and representativeness of the samples. The bulk density for bulk material must have been measured by methods that adequately account for void spaces (vugs, porosity, etc), moisture and differences between rock and alteration zones within the deposit. Discuss assumptions for bulk density estimates used in the evaluation process of the different materials. 	<ul style="list-style-type: none"> Bulk density measurements were conducted on historic drill core samples during metallurgical testwork completed by Lakefield Research. The number of drill core samples tested and their locations within the deposit or representativeness is unknown. A bulk density of 11 sq ft per ton was used. No details are available regarding the method of determination of the bulk density value. It is unknown if vugs, porosity or other void spaces were accounted for.
Classification	<ul style="list-style-type: none"> The basis for the classification of the Mineral Resources into varying confidence categories. Whether appropriate account has been taken of all relevant factors (i.e. relative confidence in tonnage/grade estimations, reliability of input data, confidence in continuity of geology and metal values, quality, quantity and distribution of the data). 	<ul style="list-style-type: none"> The historic estimate was classified as ore reserves comprising indicated and inferred resources. These are non JORC compliant terms and White Cliff Minerals is not treating the estimate as a current JORC compliant resource estimate. The estimate is classified as historic, non JORC compliant.

Criteria	JORC Code explanation	Commentary
	<ul style="list-style-type: none"> Whether the result appropriately reflects the Competent Person's view of the deposit 	
Audits or reviews	<ul style="list-style-type: none"> The results of any audits or reviews of Mineral Resource estimates. 	<ul style="list-style-type: none"> No official/independent audits or reviews of the historic estimate have been completed. White Cliff Minerals has conducted proof reading and cross-referencing data where possible to minimize transcription errors when reporting details of the historic estimate.
Discussion of relative accuracy/confidence	<ul style="list-style-type: none"> Where appropriate a statement of the relative accuracy and confidence level in the Mineral Resource estimate using an approach or procedure deemed appropriate by the Competent Person. For example, the application of statistical or geostatistical procedures to quantify the relative accuracy of the resource within stated confidence limits, or, if such an approach is not deemed appropriate, a qualitative discussion of the factors that could affect the relative accuracy and confidence of the estimate. The statement should specify whether it relates to global or local estimates, and, if local, state the relevant tonnages, which should be relevant to technical and economic evaluation. Documentation should include assumptions made and the procedures used. These statements of relative accuracy and confidence of the estimate should be compared with production data, where available. 	<ul style="list-style-type: none"> The method of estimation is deemed appropriate for the historic nature of the estimate. The weighted averaging of copper in drillhole intersections is well established and the resulting estimation is constrained by the geology and mineralisation with both the breccia zone and flow top replacements. Given the historic nature of the exploration work which informed the historic estimate the drill core has not been viewed by the Competent Person and thus not been re-assayed or validated at this time. The assay procedures are also unknown, with details of the detection limits and digestion efficiency (partial or total digestion) unknown, which may influence the copper assay results. No standards, blanks or field duplicates are noted to have been included in the sample stream which generated the assays included in the estimate, however, check assays are noted to have been completed by a second laboratory. The historic nature of the estimate can only be deemed accurate through the re-drilling of previously reported holes. Further exploration work would include the industry standard diamond and/or reverse circulation methods with a robust quality control program of blanks, standards and duplicates inserted into the sample stream for assay. Initial work would aim to confirm the geological model outlined in historic sections and through twinned holes understand the difference in historically reported intercepts and modern assay results. Bulk density measurements would be taken during diamond drilling activities, covering both mineralisation and host rock/alteration domains for inclusion in possible future resource estimations. This would increase the confidence in the historic results which informed the historic estimate where a comparison of modern and historic data/results can be completed. Verification work is planned to commence in 2025, and White Cliff Minerals is in possession of the required funding to commence this work.