

16 April 2025

Aurum hits 89m @ 2.42 g/t gold from 213m at 1.59Moz Boundiali Project

Aurum Resources (ASX: AUE) reports further shallow, high-grade gold intercepts at **BDT1** and **BDT3**, part of its 1.59Moz Boundiali Gold Project in Côte d'Ivoire.

Highlights

- Exploration diamond drilling at **BDT1** deposit (three holes for 1,079.14m) and **BDT3** prospect (three holes for 765.04m) on Boundiali's **BD** tenement returns shallow, high-grade gold hits¹, with intercepts including:
 - DSDD0150 (BDT1)
 - **89m @ 2.42 g/t Au** from 213 m inc. **7m @ 14.46 g/t Au & 6m @ 9.01 g/t Au**
 - DSDD0162 (BDT3 – outside current MRE)
 - **22.71m @ 4.78 g/t Au** from 177.59 m inc. **5.41m @ 12.66 g/t Au & 10m @ 3.60 g/t Au**
 - DSDD0149A (BDT1)
 - **63m @ 0.94 g/t Au** from 116 m inc. **6m @ 1.60 g/t Au & 7m @ 1.91 g/t Au**
- These results highlight the potential for **resource growth** at Boundiali, where gold mineralisation remains **open along strike and at depth**.
- All eight of Aurum's self-owned diamond rigs **continue to drill** at Boundiali with **100,000m** targeted in CY2025; assay results pending.
- **Two MRE updates** planned in **CY2025** to grow the maiden **1.59Moz Boundiali Mineral Resource Estimate**².
- Work has commenced on Aurum's open pit **Pre-Feasibility Study (PFS)**. As part of this, baseline environmental studies were recently initiated, with the full **PFS** anticipated for completion by year-end 2025.
- **Aurum is well-funded**³ for continued exploration success at its Boundiali and Napié projects, which host a **combined 2.5Moz gold**.

Aurum's Managing Director Dr. Caigen Wang said: "Diamond drilling at Boundiali continues to deliver thick high-grade intercepts, with DSDD0150 hitting **89m @ 2.42 g/t Au** from 213m at **BDT1**. This is approximately 150m south of the previously reported DSDD0148 which intercepted **83m @ 4.87 g/t Au** from 106m. We look to have several plunging shoots which have now been intercepted over a strike of around 280m and down to approximately 300m below surface, however, drill density drops off below this depth.

Additionally, outside the current Mineral Resource at prospect **BDT3** (3km gold in soil anomaly), hole DSDD0162 intercepted shallow, high-grade gold: **22.71m @ 4.78 g/t Au** from 177.59m (beneath previous RC drilling). This result is located 1.1km north of previously announced **12m @ 22.02 g/t Au** from 145m (DSDD0136), a prospect which is yet to have a maiden Mineral Resource Estimate defined.

We are steadily working towards completing 100,000m of diamond drilling at Boundiali in 2025. These and other drill results will be incorporated into two MRE updates. The first update, expected late in the first half of 2025, will include these recent high-grade intercepts and build upon the current **1.59Moz Boundiali MRE**. A second update, planned for late in CY25, will incorporate results from planned drilling at the **BD, BM, and BST** deposits, as well as numerous untested gold-in-soil anomalies.

¹ Refer to Table 1 for collar information and Table 2 for assay results for the **BM** drilling

² "Aurum delivers 1.6Moz Maiden JORC Resource at Boundiali Gold Project" released to the Australian Securities Exchange on 30 December 2024 and amended on 31 December 2024 and available to view on www.asx.com.au

³ ASX Announcement dated 31 Jan 2025, Quarterly Report for the period ending 31 December 2024

Aurum's use of its own drill rigs provides for cost-effective and accelerated exploration, underpinning our objective of significant resource growth at Boundiali in 2025 and beyond, ultimately contributing to an open pit Pre-Feasibility Study expected by year-end.

At our recently acquired Napié project, a 30,000m diamond drilling program is planned for 2025, targeting expansion of the current **0.87Moz MRE**⁴. This program will begin pending renewal of the Napié exploration licence, with an updated MRE anticipated by year-end.

With a combined **2.5Moz of gold** across Boundiali and Napié, and substantial drilling programs planned for both projects, Aurum is well-positioned for significant resource growth and further value creation in 2025."

BD - Latest Drill Results

Aurum is reporting new assay results from drilling at **BDT1** deposit (three holes for 1,079.14m) and **BDT3** prospect (three holes for 765.04m) on Boundiali's **BD** tenement, where Aurum holds an 80% project interest⁵. Best assay results for the new drilling includes⁶:

BD Target 1 (BDT1)

- **82m @ 0.74 g/t Au** from 246m inc. **5m @ 2.23 g/t Au** and **8m @ 1.03 g/t Au** from 332m inc. **5m @ 1.12 g/t Au** (DSDD0145)
- **63m @ 0.94 g/t Au** from 116 m inc. **6m @ 1.60 g/t Au** & **7m @ 1.91 g/t Au** & **7m @ 1.24 g/t Au** (DSDD0149A)
- **89m @ 2.42 g/t Au** from 213m inc. **7m @ 14.46 g/t Au** & **6m @ 9.01 g/t Au** (DSDD0150).

BD Target 3 (BDT3 outside MRE)

- **2.80m @ 0.79 g/t Au** from 125.20m inc. **1m @ 1.94 g/t Au** (DSDD0147)
- **1m @ 2.68 g/t Au** from 277 m (DSDD0151)
- **22.71m @ 4.78 g/t Au** from 177.59m inc. **5.41m @ 12.66 g/t Au** & **10m @ 3.60 g/t Au** (DSDD0162).

These new results are in addition to diamond holes drilled and reported⁷ by Aurum at **BD**, which include:

- **83m @ 4.87 g/t Au** from 106m inc. **6.29m @ 34.94 g/t Au** & **8m @ 14.81 g/t Au** (DSDD0148)
- **12m @ 22.02 g/t Au** from 145m inc. **2m @ 35.59 g/t Au** & **7m @ 27.50 g/t Au** (DSDD0136 – BDT3)
- **73m @ 2.15g/t Au** from 172m inc. **4m @ 18.63g/t Au** (DSDD0012)
- **90m @ 1.16 g/t Au** from 143m inc. **51m @ 1.04 g/t Au** and **35m @ 1.47 g/t Au** (DSDD0050)
- **59m @ 1.42 g/t Au** from 68m inc. **13m @ 3.92 g/t Au** (DSDD0010)
- **36m @ 2.53 g/t Au** from 104m inc. **16m @ 5.03 g/t Au** (DSDD0011)
- **4m @ 22.35 g/t Au** from 226m (173m below surface) (DSDD0004)
- **12.22m @ 14.56 g/t Au** from 275m inc. **1m @ 163.42 g/t Au** (DSDD0051)
- **69m @ 1.05 g/t Au** from 195m inc. **12m @ 2.28 g/t Au** (DSDD0060A)
- **40m @ 1.03 g/t Au** from 136m inc. **5m @ 1.70 g/t Au** (DSDD0076).

BDT1 gold deposit and **BDT3** gold prospect are located within a **13km by 3km gold mineralised corridor** which remains underexplored, and more drilling is planned to systematically test this prospective corridor. Drilling is ongoing at both

⁴ "Napié Project Listing Rule 5.6 Disclosure (Amended)" released to the Australian Securities Exchange on 4 February 2025 and available to view on www.asx.com.au.

⁵ Refer to About Aurum's Boundiali Gold Project

⁶ Refer to Table 1 for collar information and Table 2 for assay results for the new drilling

⁷ Refer to Compliance Statement for details on previous reporting on ASX

BDT1 and **BDT3** with more assays pending. True widths for these shallow, wide and high-grade gold intercepts are estimated at about 65% - 80% of reported downhole lengths.

Details of drill collar location and assay results for the new results reported at **BDT1** and **BDT3** can be found in Table 1 and Table 2 respectively. Plans showing location of the Boundiali Gold Project and the assay results are presented in the following figures (general locations in Figure 1, Figure 2 and a detailed plan in Figure 4). A cross section showing the latest drill results is presented in Figure 5 and Figure 6.

Gold mineralisation remains open along strike and at depth on all deposits and prospects. Aurum intends to drill 100,000m drilling at Boundiali in CY2025 and is planning further work to follow up these results.

Boundiali – 100,000m drill program

Aurum has commenced an extensive 100,000m diamond drilling program at its 1.59Moz Boundiali Gold Project in northern Côte d'Ivoire to be completed in 2025⁸. The program has multiple aims:

- Increase the size and confidence of current resources at BST, BD, and BM (40,000m),
- Advance known prospects (30,000m) for incorporation into two planned MRE updates in 2025.
- Target new prospects identified through soil anomalies and geological mapping to drive resource growth into 2026 (30,000m).

Next Steps:

- **Aggressive cost-effective exploration at Boundiali:** Aurum is committed to a large-scale exploration program at Boundiali. This includes:
 - **100,000m diamond drilling:** Up to eight diamond drill rigs will complete 100,000m of drilling at Boundiali in CY2025.
 - **Resource expansion:** Drilling aims to expand the known resources at the BST, BD, and BM deposits.
 - **New discoveries:** Exploration and scout drilling is planned on BD, BM and BST tenements to test new targets and create a pipeline of new discoveries to flow into resource growth.
- **Resource updates:** Aurum plans to deliver two MRE updates for Boundiali in CY2025.
- **Napié project development:** A 30,000m diamond drilling program is planned for the Napié project in CY2025 to expand the existing 0.87Moz resource. An updated MRE for Napié is expected by year-end.
- **Pre-Feasibility Study:** Aurum is working towards completing an open pit PFS for the Boundiali Gold Project by the end of CY2025. This will provide an evaluation of the project's economics and technical feasibility.
- **Continued growth:** With a strong financial position, Aurum is well-funded to execute these exploration and development plans. The company remains focused on delivering value for shareholders through resource growth and project advancement.

This update has been authorised by the Board of Aurum Resources Limited.

ENDS

⁸ This program is indicative only and subject to change based on operational requirements and exploration results. Meterage allocations may be adjusted as new information becomes available. Investors should refer to company announcements for updates on the drilling program and be aware of the inherent risks associated with mineral exploration.

FORWARD-LOOKING STATEMENTS

This ASX release contains forward-looking statements about Aurum Resources Limited's exploration activities, drilling programs, and potential Mineral Resource Estimate at the Boundiali and Napié Gold Projects. These statements are based on current expectations and are subject to risks and uncertainties inherent in mineral exploration and mining. Factors that could cause actual results to differ materially include exploration risks, drilling results, resource estimation, gold prices, operational risks, regulatory changes, and broader economic conditions. Investors should not place undue reliance on these forward-looking statements.

COMPETENT PERSONS STATEMENT

The information in this release that relates to Exploration Targets and Exploration Results is based on information compiled by Mr Mark Strizek, a Competent Person who is a Member of The Australasian Institute of Mining and Metallurgy. Mr Strizek has been a non-executive Director of the Company since 1 February 2024 and joined as an executive Director on 1 June 2024. Mr Strizek has sufficient experience that is relevant to the style of mineralisation and type of deposit under consideration and to the activity being undertaking to qualify as a Competent Person as defined in the 2012 edition of the "Australasian Code for Reporting of Exploration Results, Mineral Resources and Ore Reserves". Mr Strizek consents to the inclusion in the announcement of the matters based on his information in the form and context in which it appears. Additionally, Mr Strizek confirms that the entity is not aware of any new information or data that materially affects the information contained in the ASX releases referred to in this presentation.

COMPLIANCE STATEMENT

The information in this report that relates to Boundiali Mineral Resources is extracted from the announcement "Aurum delivers 1.59Moz Maiden JORC Resource at Boundiali Gold Project" released to the Australian Securities Exchange on 30 December 2024 and amended on 31 December 2024 and available to view on www.asx.com.au. The Company confirms that it is not aware of any new information or data that materially affects the information included in the original market announcement and, in the case of estimates of Mineral Resources, that all material assumptions and technical parameters underpinning the estimates in the relevant market announcement continue to apply and have not materially changed. The Company confirms that the form and context in which the Competent Person's findings are presented have not been materially modified from the original market announcement.

The information in this report that relates to Napié Mineral Resources is extracted from the announcement "Napié Project Listing Rule 5.6 disclosure" released to the Australian Securities Exchange on 4 February 2025 and available to view on www.asx.com.au. The Company confirms that it is not aware of any new information or data that materially affects the information included in the original market announcement and, in the case of estimates of Mineral Resources, that all material assumptions and technical parameters underpinning the estimates in the relevant market announcement continue to apply and have not materially changed. The Company confirms that the form and context in which the Competent Person's findings are presented have not been materially modified from the original market announcement.

This report contains information extracted from ASX market announcements reported in accordance with the 2012 edition of the "Australasian Code for Reporting of Exploration Results, Mineral Resources and Ore Reserves" ("2012 JORC Code") and available for viewing at www.asx.com.au and includes results reported previously and published on ASX platform:

08 Apr 2025, AUE to start diamond drilling at Boundiali South tenement (ASX:AUE)
 31 Mar 2025, AUE to commence environmental study - Boundiali Gold Project (ASX:AUE)
 27 Mar 2025, Aurum hits 83m@4.87 g/t Au at 1.59Moz Boundiali Project (ASX:AUE)
 19 Mar 2025, Hits 4m at 54.64 g/t Au outside 1.59Moz Boundiali MRE area (ASX:AUE)
 14 Mar 2025, Half Yearly Report and Accounts (ASX:AUE)
 07 Mar 25, Investor Presentation March 2025 (ASX:AUE)
 06 Mar 25, AUE Completes Acquisition of Mako Gold Limited (ASX:AUE)
 27 Feb 25, 12m at 22.02g/t from 145m outside 1.59Moz Boundiali MRE area (ASX:AUE)
 21 Feb 2025, 8m at 8.23g/t from 65m outside 1.59Moz Boundiali MRE area (ASX:AUE)
 4 Feb 2025, Napié Project Listing Rule 5.6 Disclosure (Amended) (ASX:AUE)
 3 Feb 2025, Mako Takeover Offer Closes (ASX:AUE)
 31 Jan 2025, Drill Collar Table Addendum (ASX:AUE)
 31 Jan 2025, Change in substantial holding for MKG (ASX:AUE)
 31 Jan 2025, Quarterly Activities/Appendix 5B Cash Flow Report (ASX:AUE)
 30 Jan 2025, Aurum hits 150 g/t gold at Boundiali, Cote d'Ivoire (ASX:AUE)
 29 Jan 2025, MKG - Suspension of Trading and Delisting from ASX (ASX:AUE)
 24 Jan 2025, Compulsory Acquisition Notice Mako Takeover (ASX:AUE)
 24 Jan 2025, Non-Binding MoU with SANY Heavy Equipment Co (ASX:AUE)
 23 Jan 2025, Change in substantial holding for MKG (ASX:AUE)
 9 Jan 2025, Best and Final offer for Mako Gold Limited (ASX:AUE)
 31 Dec 2024, Boundiali Project Maiden Resource delivers 1.6 Moz (amended) (ASX:AUE)
 30 Dec 2024, Boundiali Gold Project Maiden Resource delivers 1.6 Moz (ASX:AUE)
 24 Dec 2024, Change in substantial holding for MKG (ASX:AUE)
 23 Dec 2024, AUE achieves in excess of 95% gold recoveries from Boundiali (ASX:AUE)
 18 Dec 2024, Aurum hits 277 g/t gold at Boundiali BM Target 3
 13 Dec 2024, Change of Directors and Addition of Joint Company Secretary (ASX:AUE & ASX:MKG)
 6 Dec 2024, AUE receives firm commitments for A\$10 million placement (ASX:AUE)
 29 Nov 2024, Aurum earns 80% interest in Boundiali BM tenement (ASX:AUE)
 28 Nov 2024, AUE appoints Mr. Steve Zaninovich as Non-Executive Director (ASX:AUE)
 22 Nov 2024, AUE Declares Takeover Offer for all MKG Shares Unconditional (ASX:AUE)
 15 Nov 2024, Supplementary Bidders Statement (ASX:AUE)
 11 Nov 2024, Aurum hits 36 g/t gold at BM T1 of 2.5km strike (ASX:AUE)
 30 Oct 2024, Bidders Statement (ASX:AUE)
 16 Oct 2024, Recommended Takeover of Mako Gold By Aurum Resources (ASX:AUE)
 09 Sep 2024, Aurum earns 51% interest in Boundiali BM tenement (ASX:AUE)



05 Sep 2024, AUE hits 40m at 1.03 g/t gold at Boundiali **BD** Target 1 (ASX:AUE)
03 Sep 2024, Boundiali South Exploration Licence Renewed (ASX:AUE)
07 Aug 2024, Aurum to advance met studies for Boundiali Gold Project (ASX:AUE)
22 July 2024, Prelim metallurgical tests deliver up to 99% gold recovery (ASX:AUE)
17 June 2024, Aurum hits 69m at 1.05 g/t gold at Boundiali **BD** Target 1 (ASX:AUE)
28 May 2024, AUE hits 163 g/t gold in 12m @ 14.56 g/t gold at **BD** Target 1 (ASX:AUE)
24 May 2024, Aurum hits 74m @ 1.0 g/t gold at Boundiali **BD** Target 2 (ASX:AUE)
15 May 2024, Aurum expands Boundiali Gold Project footprint (ASX:AUE)
10 May 2024, AUE hits 90m @ 1.16 g/t gold at Boundiali **BD** Target 1 (ASX:AUE)
01 May 2024, Aurum Appoints Country Manager in Côte d'Ivoire (ASX:AUE)
23 April 2024, AUE drilling hits up to 45 g/t gold at Boundiali **BD** Target 2 (ASX:AUE)
19 March 2024, AUE signs binding term sheet for 100% of Boundiali South (ASX:AUE)
12 March 2024, AUE hits 73m at 2.15g/t incl 1m at 72g/t gold at Boundiali (ASX:AUE)
01 March 2024, Aurum hits 4m at 22 g/t gold in Boundiali diamond drilling (ASX:AUE)
22 January 2024, Aurum hits shallow, wide gold intercepts at Boundiali, Côte d'Ivoire (ASX:AUE)
21 December 2023, Rapid Drilling at Boundiali Gold Project (ASX:AUE)
21 November 2023, AUE Acquisition Presentation (ASX:AUE)
21 June 2021, Notice of General Meeting/Proxy Form (MSR.ASX)
21 May 2021, PlusOr to Acquire 6194 sq kms Ground Position in Côte d'Ivoire (MSR.ASX)
22 August 2019, Boundiali RC Drill Results Continue to Impress (PDI.ASX)
15 July 2019, RC, Trench Results Grow Boundiali Potential In Côte D'Ivoire (PDI.ASX)
27 May 2019, New Drill Results Strengthen Boundiali Project Côte D'Ivoire (PDI.ASX)
16 January 2019, PDI-Toro JV Sharpens Focus with Major Drilling Program (PDI.ASX)
26 November 2018, Boundiali North - Large Coherent Gold Anomalies in 14km Zone (PDI.ASX)

The Company confirms that it is not aware of any new information or data that materially affects the information included in the previous announcements.

For personal use only

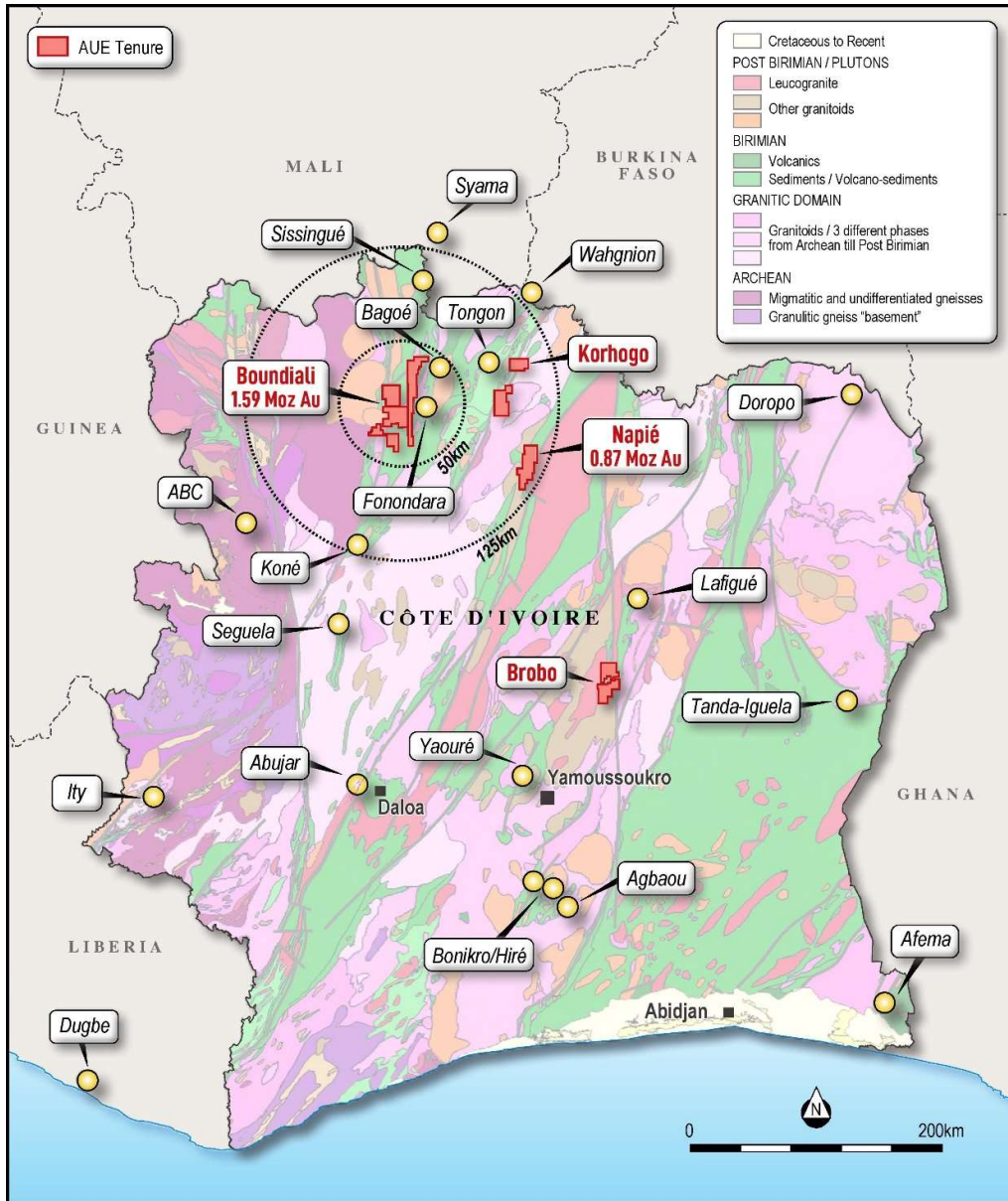
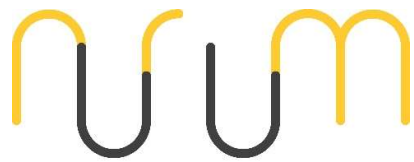


Figure 1: Location of Aurum's projects in Côte d'Ivoire

For personal use only



aurum resources

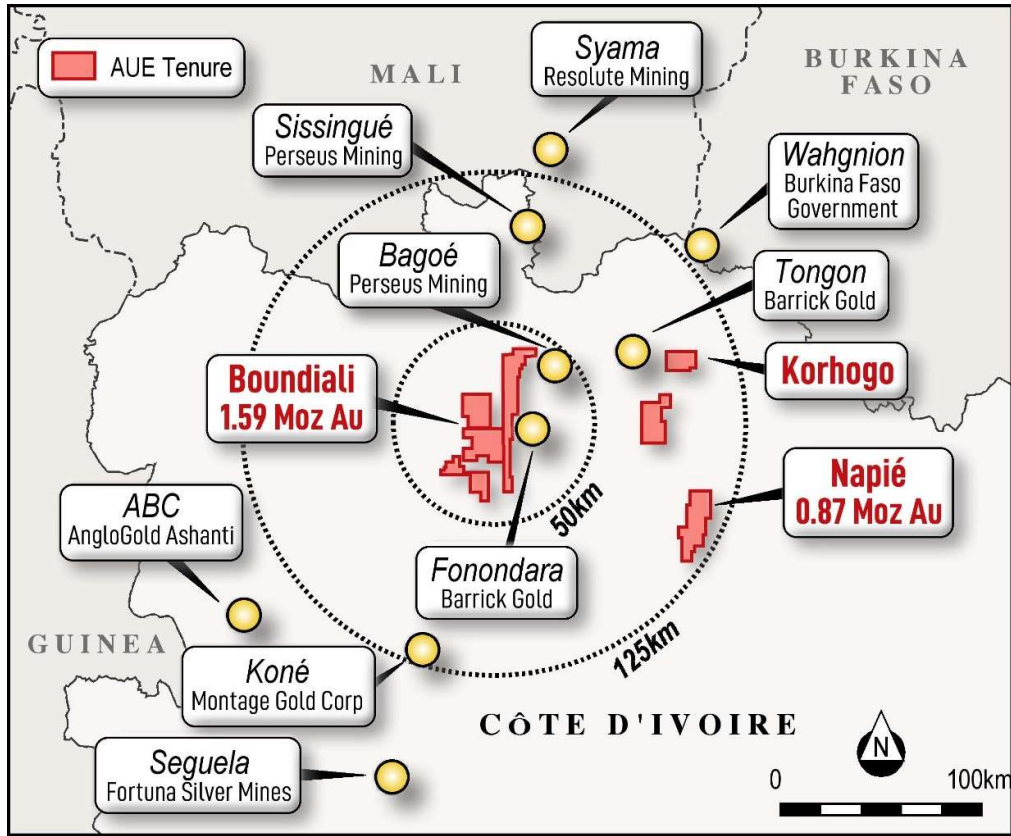


Figure 2: Location of Aurum's projects in Côte d'Ivoire

For personal use only

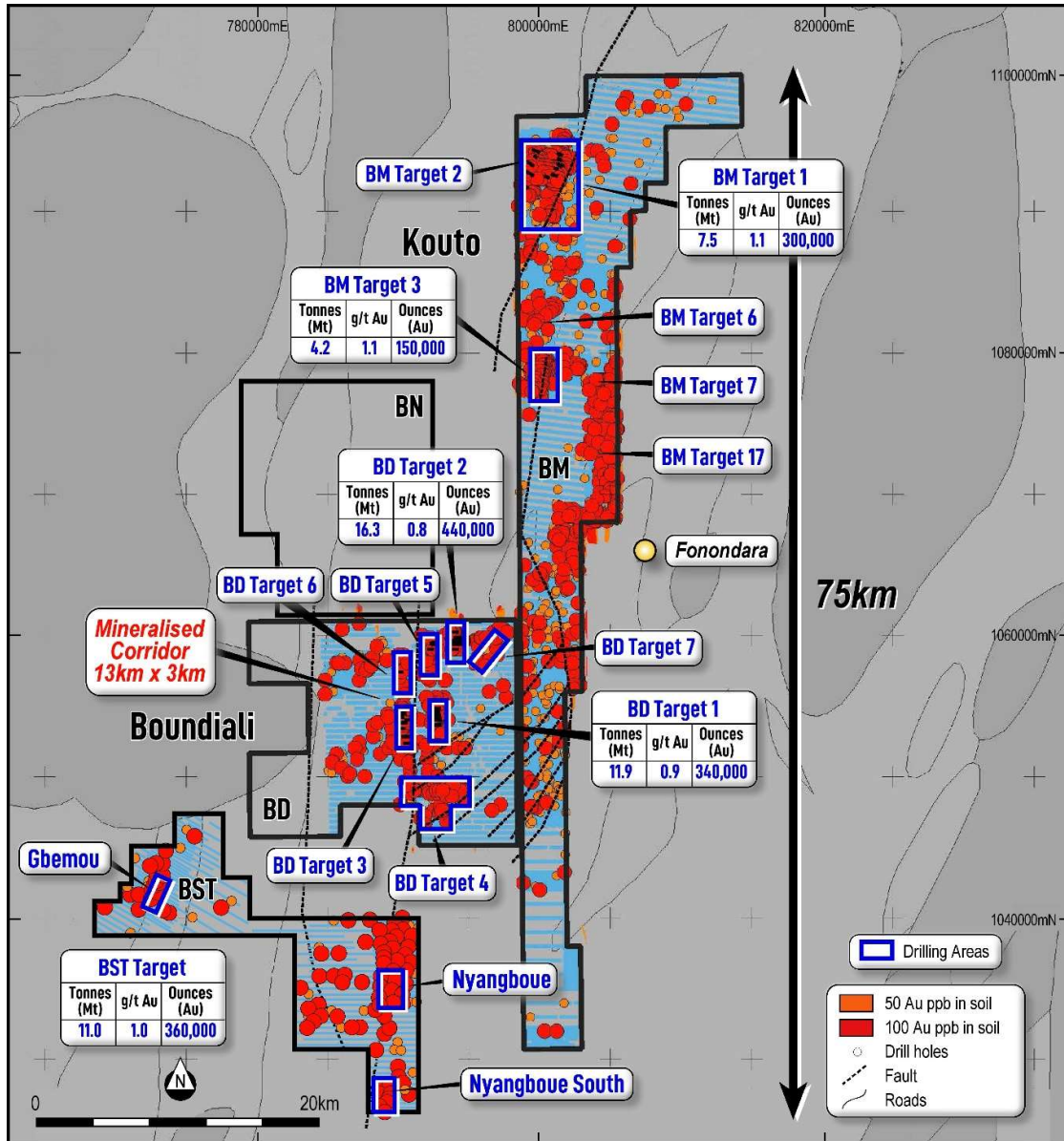


Figure 3: Aurum's Boundiali Gold Project

For personal use only

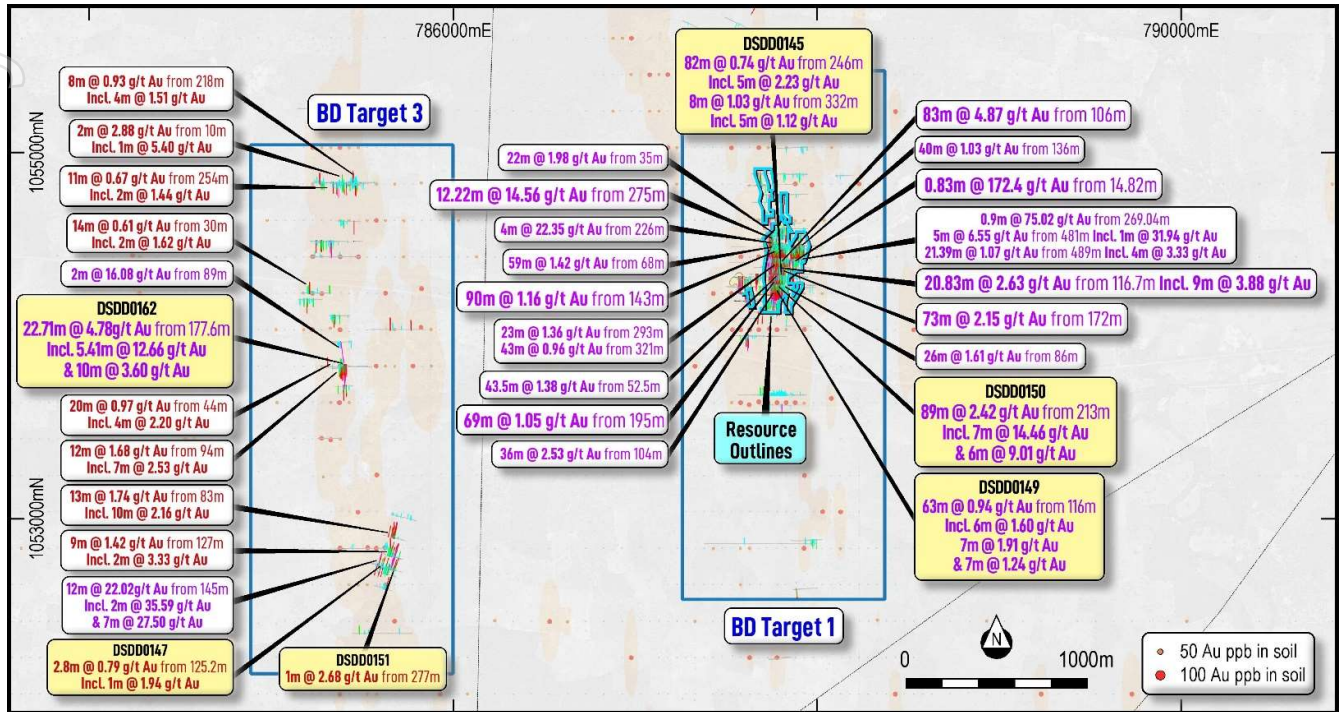


Figure 4: BD tenement plan view showing new significant drilling results (yellow) at BD Target 1 and 3

For personal use only

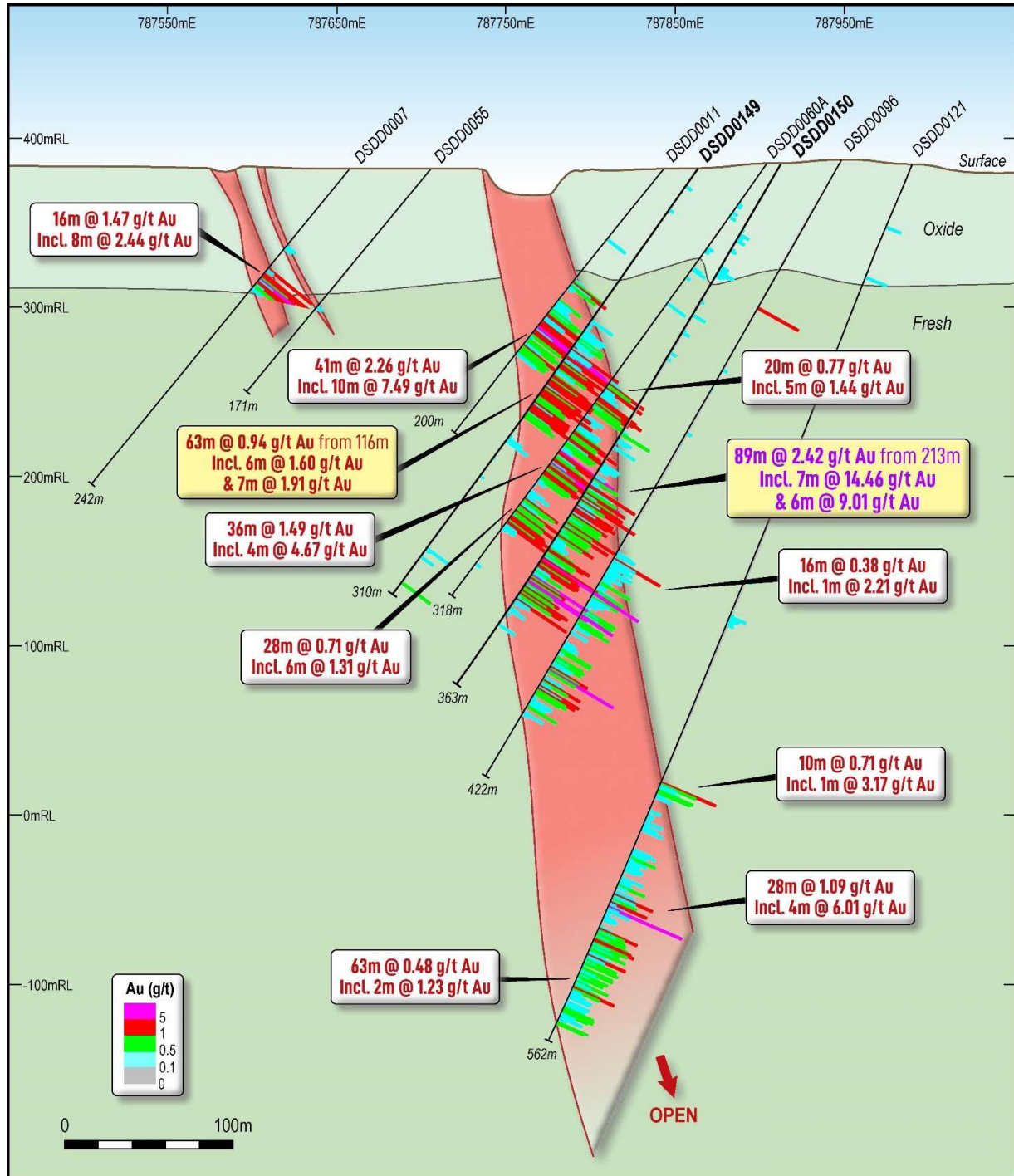


Figure 5: Cross Section looking north (+/-25m) showing new drill results DSDD0150 – BD Target 1

For personal use only

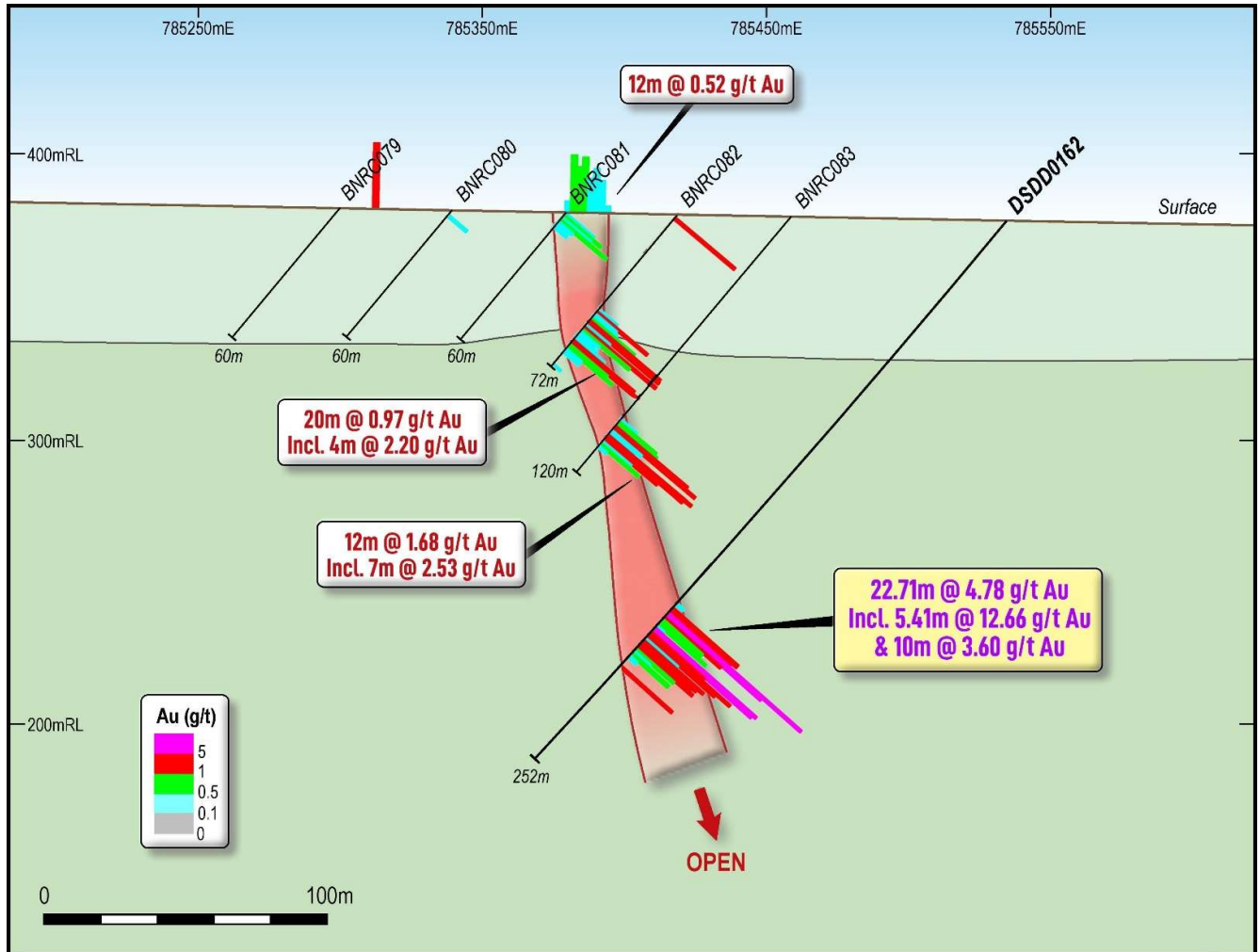


Figure 6: Cross Section looking north (+/-25m) showing new drill results DSD0162 – **BD** Target 3

Table 1: Drill Collar Information

Hole ID	UTM East	UTM North	Elevation (m)	Depth (m)	Azi deg	Dip deg	Prospect	Type
DSDD0145	787,950	1,054,325	388	406.00	270	-57	BD Target 1	
DSDD0147	785,685	1,052,716	388	212.40	285	-50	BD Target 3	
DSDD0149A	787,863	1,054,273	382	310.37	270	-55	BD Target 1	
DSDD0150	787,912	1,054,274	384	362.77	270	-60	BD Target 1	
DSDD0151	785,528	1,052,756	387	300.64	105	-55	BD Target 3	
DSDD0162^	785,534	1,053,833	376	252.00	270	-50	BD Target 3	
6 Holes				1,844.18				
^ Partial results								

Table 2: Significant assay results for new drilling being reported⁹

Hole ID	From	To	Interval	Au (ppm)	Sig Int > 0.2 g/t Au	m*g/t Au (gpm)	Sig Int >1 g/t Au
DSDD0145	0.00	1.50	1.50	0.12			
	115.00	116.00	1.00	0.25	1m @ 0.25 g/t Au	0.3	
	116.00	117.00	1.00	0.10			
	123.00	124.00	1.00	0.11			
	137.00	138.00	1.00	0.12			
	157.00	158.00	1.00	0.11			
	222.00	223.00	1.00	0.69			
	223.00	224.00	1.00	0.01	4m @ 0.36 g/t Au	1.4	
	224.00	225.00	1.00	0.27			
	225.00	226.00	1.00	0.47			
	226.00	227.00	1.00	0.10			
	235.00	236.00	1.00	0.12			
	236.00	237.00	1.00	0.12			
	237.00	238.00	1.00	0.30	2m @ 0.30 g/t Au	0.6	
	238.00	239.00	1.00	0.30			
	239.00	240.00	1.00	0.10			
	241.00	242.00	1.00	0.12			
	242.00	243.00	1.00	0.15			
	246.00	247.00	1.00	0.23	82m @ 0.74 g/t Au	60.6	
	247.00	248.00	1.00	0.08			
248.00	249.00	1.00	0.05				
249.00	250.00	1.00	0.12				
250.00	251.00	1.00	0.31				
251.00	252.00	1.00	1.22				
252.00	253.00	1.00	3.27				
253.00	254.00	1.00	0.16				
254.00	255.00	1.00	0.28			2m @ 2.25 g/t Au	

⁹ 0.2 g/t Au cut off used with 3m internal dilution and no top cut applied

Hole ID	From	To	Interval	Au (ppm)	Sig Int > 0.2 g/t Au	m*g/t Au (gpm)	Sig Int >1 g/t Au
	255.00	256.00	1.00	0.31			
	256.00	257.00	1.00	1.82			1m @ 1.82 g/t Au
	257.00	258.00	1.00	0.85			
	258.00	259.00	1.00	0.56			
	259.00	260.00	1.00	0.19			
	260.00	261.00	1.00	0.30			
	261.00	262.00	1.00	0.52			
	262.00	263.00	1.00	0.44			
	263.00	264.00	1.00	1.75			1m @ 1.75 g/t Au
	264.00	265.00	1.00	0.72			
	265.00	266.00	1.00	0.67			
	266.00	267.00	1.00	0.90			
	267.00	268.00	1.00	0.25			
	268.00	269.00	1.00	0.40			
	269.00	270.00	1.00	0.14			
	270.00	271.00	1.00	0.84			
	271.00	272.00	1.00	0.91			
	272.00	273.00	1.00	0.05			
	273.00	274.00	1.00	0.46			
	274.00	275.00	1.00	0.72			
	275.00	276.00	1.00	1.58			
	276.00	277.00	1.00	1.07			
	277.00	278.00	1.00	1.14			5m @ 1.17 g/t Au
	278.00	279.00	1.00	0.90			
	279.00	280.00	1.00	1.15			
	280.00	281.00	1.00	0.25			
	281.00	282.00	1.00	0.31			
	282.00	283.00	1.00	0.14			
	283.00	284.00	1.00	0.17			
	284.00	285.00	1.00	2.79			
	285.00	286.00	1.00	0.63			
	286.00	287.00	1.00	1.65			5m @ 1.47 g/t Au
	287.00	288.00	1.00	0.46			
	288.00	289.00	1.00	1.83			
	289.00	290.00	1.00	0.43			
	290.00	291.00	1.00	0.03			
	291.00	292.00	1.00	0.13			
	292.00	293.00	1.00	0.23			
	293.00	294.00	1.00	0.13			
	294.00	295.00	1.00	0.07			
	295.00	296.00	1.00	0.34			
	296.00	297.00	1.00	0.41			
	297.00	298.00	1.00	5.38			
	298.00	299.00	1.00	0.20			
	299.00	300.00	1.00	1.19			5m @ 2.23 g/t Au
	300.00	301.00	1.00	2.40			
	301.00	302.00	1.00	1.96			
	302.00	303.00	1.00	0.17			
	303.00	304.00	1.00	2.10			
	304.00	305.00	1.00	1.00			4m @ 1.18 g/t Au

For personal use only

Hole ID	From	To	Interval	Au (ppm)	Sig Int > 0.2 g/t Au	m*g/t Au (gpm)	Sig Int >1 g/t Au			
	305.00	306.00	1.00	0.46						
	306.00	307.00	1.00	1.17						
	307.00	308.00	1.00	0.51						
	308.00	309.00	1.00	0.08						
	309.00	309.75	0.75	0.20						
	309.75	311.00	1.25	2.35				1.25 m @ 2.35 g/t Au		
	311.00	311.50	0.50	0.67						
	311.50	312.00	0.50	0.16						
	312.00	313.00	1.00	0.35						
	313.00	314.00	1.00	0.06						
	314.00	315.00	1.00	0.13						
	315.00	316.00	1.00	0.01						
	316.00	317.00	1.00	3.69					1m @ 3.69 g/t Au	
	317.00	318.00	1.00	0.05						
	318.00	318.90	0.90	0.02						
	318.90	320.00	1.10	0.35						
	320.00	321.00	1.00	0.22						
	321.00	322.00	1.00	0.04						
	322.00	323.00	1.00	0.19						
	323.00	324.00	1.00	0.25						
	324.00	325.00	1.00	0.15						
	325.00	326.00	1.00	0.06						
	326.00	327.00	1.00	0.16						
	327.00	328.00	1.00	0.34						
	332.00	333.00	1.00	0.62				8m @ 1.03 g/t Au	8.2	1m @ 1.74 g/t Au
	333.00	334.00	1.00	1.74						
	334.00	335.00	1.00	0.26						
	335.00	336.00	1.00	1.64						
	336.00	337.00	1.00	0.01						
	337.00	338.00	1.00	0.96						
	338.00	339.00	1.00	1.50						
	339.00	340.00	1.00	1.49						
	343.00	344.00	1.00	0.10						
346.00	347.00	1.00	1.15	1m @ 1.15 g/t Au	1.2	1m @ 1.15 g/t Au				
378.00	379.00	1.00	0.15							
379.00	380.00	1.00	0.17							
380.00	381.00	1.00	0.11							
382.00	383.00	1.00	0.17							
405.00	406.00	1.00	0.14							
DSDD0147	54.00	55.00	1.00				0.17			
	55.00	56.00	1.00				0.10			
	71.00	72.00	1.00	0.18						
	73.00	74.00	1.00	0.29	2m @ 0.60 g/t Au	1.2				
	74.00	75.00	1.00	0.92						
	96.00	97.00	1.00	0.44	1m @ 0.44 g/t Au	0.4				
	103.00	104.00	1.00	0.17	1m @ 1.44 g/t Au	1.4	1m @ 1.44 g/t Au			
	106.00	107.00	1.00	1.44						
	107.00	108.00	1.00	0.16						
110.00	111.00	1.00	0.10	1m @ 0.21 g/t Au	0.2					
116.00	117.00	1.00	0.21							

For personal use only

Hole ID	From	To	Interval	Au (ppm)	Sig Int > 0.2 g/t Au	m*g/t Au (gpm)	Sig Int >1 g/t Au
	125.20	126.00	0.80	0.23	2.80 m @ 0.79 g/t Au	2.2	1m @ 1.94 g/t Au
	126.00	127.00	1.00	0.08			
	127.00	128.00	1.00	1.94			
	132.00	133.00	1.00	0.22	1m @ 0.22 g/t Au	0.2	
	149.00	150.00	1.00	0.11			
	155.00	156.00	1.00	0.11			
	159.00	160.00	1.00	1.63	1m @ 1.63 g/t Au	1.6	1m @ 1.63 g/t Au
	161.00	162.00	1.00	0.11			
164.00	165.00	1.00	0.17				
DSSD0149A	12.00	13.00	1.00	0.16			
	15.00	15.95	0.95	0.10			
	16.50	17.50	1.00	0.11			
	28.95	30.00	1.05	0.14			
	109.00	110.00	1.00	0.46	1m @ 0.46 g/t Au	0.5	
	111.00	112.00	1.00	0.12			
	112.00	113.00	1.00	0.11			
	113.00	114.35	1.35	0.13			
	114.35	115.00	0.65	0.10			
	116.00	117.00	1.00	0.21			
	117.00	118.00	1.00	0.49			
	118.00	119.00	1.00	0.18			
	119.00	120.00	1.00	0.41			
	120.00	121.00	1.00	0.28			
	121.00	122.00	1.00	0.22			
	122.00	123.00	1.00	0.58			
	123.00	124.00	1.00	0.39			
	124.00	125.00	1.00	0.60			
	125.00	126.00	1.00	0.27			
	126.00	127.00	1.00	0.37			
	127.00	128.00	1.00	0.06			
	128.00	129.00	1.00	0.08			
	129.00	130.00	1.00	0.34			
	130.00	131.00	1.00	2.99			1m @ 2.99 g/t Au
	131.00	132.00	1.00	0.47			
	132.00	133.00	1.00	0.45			
	133.00	134.00	1.00	0.16			
	134.00	135.00	1.00	0.14			
	135.00	136.00	1.00	1.94			
	136.00	137.00	1.00	1.95			2m @ 1.95 g/t Au
	137.00	138.00	1.00	0.34			
	138.00	139.00	1.00	0.09			
139.00	140.00	1.00	2.06				
140.00	141.00	1.00	0.61				
141.00	142.00	1.00	1.07				
142.00	143.00	1.00	1.16			5m @ 1.33 g/t Au	
143.00	144.00	1.00	1.76				
144.00	145.00	1.00	0.79				
145.00	146.00	1.00	0.37				
146.00	147.00	1.00	0.12				
147.00	148.00	1.00	0.10				

Hole ID	From	To	Interval	Au (ppm)	Sig Int > 0.2 g/t Au	m*g/t Au (gpm)	Sig Int >1 g/t Au
	148.00	149.00	1.00	0.57			6m @ 1.60 g/t Au
	149.00	150.00	1.00	1.24			
	150.00	151.00	1.00	1.89			
	151.00	152.00	1.00	0.67			
	152.00	153.00	1.00	2.28			
	153.00	154.00	1.00	1.23			
	154.00	155.00	1.00	2.27			7m @ 1.91 g/t Au
	155.00	156.00	1.00	0.04			
	156.00	157.00	1.00	0.26			
	157.00	158.00	1.00	1.39			
	158.00	159.00	1.00	0.90			
	159.00	160.00	1.00	3.19			
	160.00	161.00	1.00	1.21			
	161.00	162.00	1.00	1.22			
	162.00	163.00	1.00	4.37			
	163.00	164.00	1.00	1.06			
	164.00	165.00	1.00	0.53			
	165.00	166.00	1.00	0.77			
	166.00	167.00	1.00	0.76			
	167.00	168.00	1.00	0.83			
	168.00	169.00	1.00	1.29			7m @ 1.24 g/t Au
	169.00	170.00	1.00	0.40			
	170.00	171.00	1.00	1.37			
	171.00	172.00	1.00	1.25			
	172.00	173.00	1.00	1.31			
	173.00	174.00	1.00	1.29			
	174.00	175.00	1.00	1.74			
	175.00	175.60	0.60	0.48			
	175.60	177.00	1.40	0.58			
	177.00	178.00	1.00	0.69			
178.00	179.00	1.00	0.87	3m @ 0.33 g/t Au			
192.00	193.00	1.00	0.11				
193.00	194.00	1.00	0.12				
194.00	195.00	1.00	0.27				
195.00	196.00	1.00	0.25				
196.00	197.00	1.00	0.47				
209.00	210.00	1.00	0.11				
222.00	222.60	0.60	0.13				
275.00	276.00	1.00	0.49				
276.00	277.00	1.00	0.13				
281.00	282.00	1.00	0.24	1m @ 0.24 g/t Au	0.2		
300.00	301.00	1.00	0.82	1m @ 0.82 g/t Au	0.8		
DSDD0150	44.00	45.00	1.00	0.11			
	47.00	48.00	1.00	0.18			
	48.00	49.00	1.00	0.10			
	49.00	50.33	1.33	0.13			
	51.00	52.00	1.00	0.17			
	54.00	55.00	1.00	0.10			
	57.00	58.00	1.00	0.12			
	58.00	59.00	1.00	0.14			

For personal use only

Hole ID	From	To	Interval	Au (ppm)	Sig Int > 0.2 g/t Au	m*g/t Au (gpm)	Sig Int >1 g/t Au
	59.00	60.00	1.00	0.10			
	67.00	68.26	1.26	0.10			
	69.00	70.00	1.00	0.16			
	70.00	71.00	1.00	0.14			
	71.00	72.00	1.00	0.16			
	72.00	73.00	1.00	0.27			
	73.00	74.00	1.00	0.20	2m @ 0.23 g/t Au	0.5	
	74.00	75.00	1.00	0.16			
	75.00	76.00	1.00	0.14			
	76.00	77.00	1.00	0.10			
	93.00	94.00	1.00	0.12			
	102.00	103.00	1.00	0.22	1m @ 0.22 g/t Au	0.2	
	113.00	114.00	1.00	0.11			
	114.00	115.00	1.00	0.15			
	128.00	129.00	1.00	0.14			
	132.00	133.00	1.00	0.12			
	182.78	184.00	1.22	0.14			
	184.00	185.00	1.00	0.68			
	185.00	186.00	1.00	0.05			
	186.00	187.00	1.00	0.03	6m @ 0.21 g/t Au	1.2	
	187.00	188.00	1.00	0.04			
	188.00	189.00	1.00	0.25			
	189.00	190.00	1.00	0.20			
	193.00	194.00	1.00	0.44	1m @ 0.44 g/t Au	0.4	
	205.00	206.00	1.00	0.31			
	206.00	207.00	1.00	0.26	3m @ 0.29 g/t Au	0.9	
	207.00	208.00	1.00	0.29			
	208.00	209.00	1.00	0.11			
	209.00	210.00	1.00	0.18			
	213.00	214.00	1.00	0.20			
	214.00	215.00	1.00	0.07			
	215.00	216.00	1.00	0.07			
	216.00	217.00	1.00	0.57			
	217.00	218.00	1.00	0.16			
	218.00	219.00	1.00	0.09			
	219.00	220.00	1.00	0.23			
	220.00	221.00	1.00	2.47			1m @ 2.47 g/t Au
	221.00	222.00	1.00	0.01			
	222.00	223.00	1.00	0.49			
	223.00	224.00	1.00	0.80	89m @ 2.42 g/t Au	214.9	
	224.00	225.00	1.00	0.53			
	225.00	226.00	1.00	1.66			
	226.00	227.00	1.00	0.24			4m @ 1.10 g/t Au
	227.00	228.00	1.00	0.79			
	228.00	229.00	1.00	1.72			
	229.00	230.00	1.00	0.37			
	230.00	231.00	1.00	4.64			1m @ 4.64 g/t Au
	231.00	232.00	1.00	0.57			
	232.00	233.00	1.00	0.28			
	233.00	234.00	1.00	0.32			

For personal use only

For personal use only

Hole ID	From	To	Interval	Au (ppm)	Sig Int > 0.2 g/t Au	m*g/t Au (gpm)	Sig Int >1 g/t Au
	234.00	235.00	1.00	1.31			
	235.00	236.00	1.00	0.39			
	236.00	237.00	1.00	1.71			4m @ 1.12 g/t Au
	237.00	238.00	1.00	1.08			
	238.00	239.00	1.00	0.01			
	239.00	240.00	1.00	0.37			
	240.00	241.00	1.00	1.24			1m @ 1.24 g/t Au
	241.00	242.00	1.00	0.88			
	242.00	243.00	1.00	0.82			
	243.00	244.00	1.00	0.26			
	244.00	245.00	1.00	0.95			
	245.00	246.00	1.00	0.86			
	246.00	247.00	1.00	3.54			
	247.00	248.00	1.00	0.67			4m @ 1.68 g/t Au
	248.00	249.00	1.00	0.16			
	249.00	250.00	1.00	2.35			
	250.00	251.00	1.00	0.77			
	251.00	252.00	1.00	0.14			
	252.00	253.00	1.00	0.68			
	253.00	254.00	1.00	0.20			
	254.00	255.00	1.00	0.86			
	255.00	256.00	1.00	1.25			1m @ 1.25 g/t Au
	256.00	257.00	1.00	0.60			
	257.00	258.00	1.00	0.20			
	258.00	259.00	1.00	0.08			
	259.00	260.00	1.00	0.22			
	260.00	261.00	1.00	0.12			
	261.00	262.00	1.00	0.30			
	262.00	263.00	1.00	0.23			
	263.00	264.00	1.00	0.10			
	264.00	265.00	1.00	0.56			
	265.00	266.00	1.00	1.85			
	266.00	267.00	1.00	1.25			2m @ 1.55 g/t Au
	267.00	268.00	1.00	0.76			
	268.00	269.00	1.00	0.18			
	269.00	270.00	1.00	0.69			
	270.00	271.00	1.00	0.43			
	271.00	272.00	1.00	4.68			
	272.00	273.00	1.00	89.68			
	273.00	274.00	1.00	1.30			
	274.00	275.00	1.00	1.57			7m @ 14.46 g/t Au
	275.00	276.00	1.00	0.88			
	276.00	277.00	1.00	1.70			
	277.00	278.00	1.00	1.44			
	278.00	279.00	1.00	0.26			
	279.00	280.00	1.00	0.05			
	280.00	281.00	1.00	0.70			
	281.00	282.00	1.00	0.24			
	282.00	283.00	1.00	0.16			
	283.00	284.00	1.00	5.10			6m @ 9.01 g/t Au

Hole ID	From	To	Interval	Au (ppm)	Sig Int > 0.2 g/t Au	m*g/t Au (gpm)	Sig Int >1 g/t Au
	284.00	285.00	1.00	0.75			
	285.00	286.00	1.00	1.17			
	286.00	287.00	1.00	0.98			
	287.00	288.00	1.00	39.19			
	288.00	289.00	1.00	6.89			
	289.00	290.00	1.00	0.65			
	290.00	291.00	1.00	0.21			
	291.00	292.00	1.00	1.16			
	292.00	293.00	1.00	0.84			
	293.00	294.00	1.00	0.78			4m @ 1.34 g/t Au
	294.00	295.00	1.00	2.60			
	295.00	296.00	1.00	0.60			
	296.00	297.00	1.00	1.80			1m @ 1.80 g/t Au
	297.00	298.00	1.00	0.98			
	298.00	299.00	1.00	0.12			
	299.00	300.00	1.00	0.30			
	300.00	301.00	1.00	3.54			1m @ 3.54 g/t Au
	301.00	302.00	1.00	0.28			
	302.00	303.00	1.00	0.19			
	303.00	304.00	1.00	0.11			
	306.00	307.00	1.00	0.17			
307.00	308.00	1.00	0.30	1m @ 0.30 g/t Au	0.3		
310.00	311.00	1.00	0.13				
318.00	319.00	1.00	0.31	1m @ 0.31 g/t Au	0.3		
DSDD0151	91.00	92.00	1.00	0.14			
	92.00	93.00	1.00	0.10			
	116.00	117.00	1.00	0.20			
	117.00	118.00	1.00	0.07	4m @ 0.64 g/t Au	2.6	
	118.00	119.00	1.00	0.32			
	119.00	120.00	1.00	1.97			1m @ 1.97 g/t Au
	120.00	121.00	1.00	0.12			
	138.00	139.00	1.00	0.16			
	139.00	140.00	1.00	0.16			
	187.00	188.00	1.00	0.14			
	211.00	212.00	1.00	0.25	2m @ 0.30 g/t Au	0.6	
	212.00	213.00	1.00	0.35			
	217.30	218.00	0.70	0.11			
	226.00	227.00	1.00	0.10			
	235.00	236.00	1.00	0.42	1m @ 0.42 g/t Au	0.4	
	258.00	259.00	1.00	0.11			
	259.00	260.00	1.00	0.11			
	265.00	266.00	1.00	1.30	1m @ 1.30 g/t Au		1m @ 1.30 g/t Au
	271.00	272.00	1.00	0.54	2m @ 0.65 g/t Au	1.3	
	272.00	273.00	1.00	0.76			
	274.75	276.00	1.25	0.11			
276.00	277.00	1.00	0.17				
277.00	278.00	1.00	2.68	1m @ 2.68 g/t Au	2.7	1m @ 2.68 g/t Au	
278.00	279.00	1.00	0.19				
279.00	280.00	1.00	0.14				
280.00	281.00	1.00	0.14				

For personal use only

Hole ID	From	To	Interval	Au (ppm)	Sig Int > 0.2 g/t Au	m*g/t Au (gpm)	Sig Int >1 g/t Au
	281.00	282.00	1.00	0.15	1.22 m @ 0.20 g/t Au	0.2	
	282.00	283.00	1.00	0.19			
	284.00	285.22	1.22	0.20			
DSDD0162	0.00	167.00	167.00		Pending		
	175.50	176.50	1.00	0.14	22.71 m @ 4.78 g/t Au	108.4	5.41 m @ 12.66 g/t Au
	176.50	177.59	1.09	0.10			
	177.59	179.00	1.41	2.20			
	179.00	180.00	1.00	1.77			
	180.00	181.00	1.00	53.28			
	181.00	182.00	1.00	8.90			
	182.00	183.00	1.00	1.44			
	183.00	184.00	1.00	0.66			
	184.00	185.00	1.00	0.66			
	185.00	186.00	1.00	0.93			
	186.00	187.00	1.00	0.14			
	187.00	188.00	1.00	11.83			
	188.00	189.00	1.00	10.28			
	189.00	190.00	1.00	1.22			
	190.00	191.00	1.00	4.47			
	191.00	192.00	1.00	2.40			
	192.00	193.00	1.00	0.45			
	193.00	194.00	1.00	1.67			
	194.00	195.00	1.00	1.31			
	195.00	196.00	1.00	1.10			
	196.00	197.00	1.00	1.30			
	197.00	198.00	1.00	0.59			
198.00	199.00	1.00	0.21				
199.00	200.30	1.30	0.56				
200.30	201.65	1.35	0.14				
205.00	206.00	1.00	1.12	1m @ 1.12 g/t Au	1.1	1m @ 1.12 g/t Au	
213.00	252.00	39.00		Pending			

About Aurum

Aurum Resources (ASX:AUE) is an Australian based gold exploration company focused on discovery and development of major gold projects in Côte d'Ivoire, West Africa. Aurum has 2.47Moz gold resources coming from two gold projects, the 1.59Moz Boundiali Gold Project and the 0.87Moz Napié Gold Project. Aurum owns and runs eight (8) diamond drill rigs allowing it to explore faster and more cost effectively than its peers.

Statement of Boundiali Mineral Resources by Deposit as at 29 December 2024. Reported at 0.5 g/t Au cut off within pit shells; and 1.0 g/t Au cut off below the pit shells¹⁰

Area	Class	Oxide			Transition			Fresh			Total		
		Quantity (Mt)	Au (g/t)	Au (Oz)	Quantity (Mt)	Au (g/t)	Au (KOz)	Quantity (Mt)	Au (g/t)	Au (KOz)	Quantity (Mt)	Au (g/t)	Au (KOz)
BST	Indicated	0.8	1.1	30,000	0.7	1.2	30,000	2.4	1.0	80,000	3.9	1.1	130,000
	Inferred	0.6	1.0	20,000	1.3	1.0	40,000	5.1	1.0	160,000	7.1	1.0	220,000
	Sub Total	1.4	1.1	50,000	2.0	1.0	70,000	7.6	1.0	240,000	11.0	1.0	360,000
BDT1	Indicated												
	Inferred	0.8	0.9	20,000	0.3	0.9	10,000	10.8	0.9	310,000	11.9	0.9	340,000
	Sub Total	0.8	0.9	20,000	0.3	0.9	10,000	10.8	0.9	310,000	11.9	0.9	340,000
BDT2	Indicated												
	Inferred	0.1	0.8	3,000	2.1	0.8	60,000	14.1	0.8	380,000	16.3	0.8	440,000
	Sub Total	0.1	0.8	3,000	2.1	0.8	60,000	14.1	0.8	380,000	16.3	0.8	440,000
BMT1	Indicated												
	Inferred	0.3	1.0	10,000	0.1	1.0	3,000	7.1	1.3	288,000	7.5	1.2	300,000
	Sub Total	0.3	1.0	10,000	0.1	1.0	3,000	7.1	1.3	288,000	7.5	1.2	300,000
BMT3	Indicated												
	Inferred	0.2	1.1	10,000	0.3	1.1	10,000	3.8	1.1	130,000	4.2	1.1	150,000
	Sub Total	0.2	1.1	10,000	0.3	1.1	10,000	3.8	1.1	130,000	4.2	1.1	150,000
All	Indicated	0.8	1.2	30,000	0.7	1.3	30,000	2.4	1.0	80,000	3.9	1.0	130,000
	Inferred	2.0	1.0	60,000	4.1	0.9	120,000	40.8	1.0	1,270,000	47.0	1.0	1,450,000
	Total	2.8	1.0	90,000	4.8	1.0	150,000	43.3	1.0	1,350,000	50.9	1.0	1,590,000

Napié Mineral Resource Estimate; On 14 June 2022, a maiden Mineral Resource Estimate was reported in accordance with JORC (2012) comprising two deposits, Tchaga and Gogbala.¹¹

Deposit	Category	Tonnes (Mt)	Grade (g/t Au)	Au (koz)
Tchaga	Inferred	14.6	1.16	545
Gogbala	Inferred	7.8	1.29	323
Global Resource	Total	22.5	1.20	868

Resources reported at a cut-off grade of 0.6g/t gold. Differences may occur in totals due to rounding.

¹⁰ "Aurum delivers 1.59Moz Maiden JORC Resource at Boundiali Gold Project" released to the Australian Securities Exchange on 30 December 2024 and amended on 31 December 2024 and available to view on www.asx.com.au.

¹¹ "Napié Project Listing Rule 5.6 Disclosure (Amended)" released to the Australian Securities Exchange on 4 February 2025 and available to view on www.asx.com.au.

Boundiali Gold Project (1.6Moz)

The flagship 1.6Moz Boundiali Gold Project is comprised of four neighbouring exploration tenements and is located within the same greenstone belt as Resolute's large Syama (11.5Moz) gold mine and Perseus' Sissingue (1.4 Moz) gold mine to the north and Montage Gold's 4.5Moz Koné project located to the south. Barrick's Tongon mine (5.0Moz) is located to the northeast (Figure 2):

- 1) Boundiali Minex Tenement PR0893 ("BM"), 400km², holder Minex West Africa, of which Aurum holds 80% (through its fully owned subsidiary Plusor Global Pty Ltd "Plusor") and can hold interest of between 80-88% in a mining licence.
- 2) Boundiali DS tenement PR808 ("BD"), 260km², holder DS Resources Joint Venture Company, of which Aurum is 80% share capital owner through its fully owned subsidiary Plusor.
- 3) Boundiali South tenement ("BST") 100%, 167.34km² is located directly south of Aurum's BD and BM tenement. Application for mining exploitation licence was lodged with the Ministry of Mines, Petroleum and Energy in March 2025.
- 4) Boundiali North tenement PR283 ("BN"), 208.87km², under renewal, Aurum to earn up to 70% interest through its wholly owned subsidiary Plusor.

BM gold project JV 80% interest

- Can earn 80-88% interest in future gold production company (Government gets 10% free carry from local partner):
 - 80% if local partner contributes 11% capex
 - 85% if local partner does not contribute capex – they go to 5% free carry
 - 88% if local partner sells us 3% of their interest they go to 2% free carry

BD gold project JV 80% interest

- Can earn 80-88% interest in future gold production company (Government gets 10% free carry from local partner):
 - 80% if local partner contributes 11% capex
 - 85% if local partner does not contribute capex – they go to 5% free carry
 - 88% if local partner sells us 3% of their interest they go to 2% free carry

BST gold project 100% interest

- *Application for mining exploitation licence was lodged with the Ministry of Mines, Petroleum and Energy in March 2025.*
- 90% interest in future gold production company (Government get 10% free carry from Aurum interest)

BN gold project JV

Aurum is earning interest through carrying out exploration to earn 70% interest in three stages:

- Stage 1: Aurum earns 35% interest by spending USD 1.2 million within 36 months of license grant
- Stage 2: Aurum earns 51% interest by spending USD 2.5 million within 60 months of license grant
- Stage 3: Aurum earns 70% interest upon completion of a pre-feasibility study on the tenement.



- Diamond drilling conducted by Aurum will be valued at US\$140 per meter for expenditure calculations
- Upon grant of a mining exploitation license, the ownership structure will be: Aurum (70%), GNRR (20%), Ivorian Government (10%)

Mako Gold

Wholly owned subsidiary of Aurum and holds the following projects:

- 0.87Moz Napié Gold Project. 90% Mako and African American Investment Fund (AAIF) has a 10% interest in the Napié Project free carried to completion of a feasibility study.
- Korhogo Project (100%), significant manganese discovery
- Brobo Project (100%), prospective for lithium/rare earths

For personal use only

Section 1 of the JORC Code, 2012 Edition – Table 1

Sampling Techniques and Data

Criteria	JORC Code explanation	Commentary
Sampling techniques	<ul style="list-style-type: none"> Nature and quality of sampling (e.g. cut channels, random chips, or specific specialised industry standard measurement tools appropriate to the minerals under investigation, such as down hole gamma sondes, or handheld XRF instruments, etc). These examples should not be taken as limiting the broad meaning of sampling. Include reference to measures taken to ensure sample representivity and the appropriate calibration of any measurement tools or systems used. Aspects of the determination of mineralisation that are Material to the Public Report. In cases where ‘industry standard’ work has been done this would be relatively simple (eg ‘reverse circulation drilling was used to obtain 1 m samples from which 3 kg was pulverised to produce a 30 g charge for fire assay’). In other cases more explanation may be required, such as where there is coarse gold that has inherent sampling problems. Unusual commodities or mineralisation types (eg submarine nodules) may warrant disclosure of detailed information. 	<ul style="list-style-type: none"> Samples were collected using diamond drilling techniques generally angled at 50° to optimally intersect the mineralised zones. Diamond core was logged both for geological and mineralised structures as noted above. The core was then cut in half using a diamond brick cutting saw on 1m intervals. Typically, the core was sampled to geological intervals as defined by the geologist within the even two metre sample intervals utilised. The right-hand side of the core was always submitted for analysis with the left side being stored in trays on site. Sampling and QAQC procedures were carried out to industry standards. Sample preparation and assay was completed by independent international accredited laboratory MSALABS. Following cutting or splitting, the samples were bagged by the Client employees and then sent to the laboratory for preparation. These samples were subsequently sent to MSALABS at Yamousoukro for analysis via 500g Photon Assay.
Drilling techniques	<ul style="list-style-type: none"> Drill type (eg core, reverse circulation, open-hole hammer, rotary air blast, auger, Bangka, sonic, etc) and details (eg core diameter, triple or standard tube, depth of diamond tails, face-sampling bit or other type, whether core is oriented and if so, by what method, etc). 	<ul style="list-style-type: none"> Diamond drilling carried out with mostly NTW and some HQ sized equipment. PQ-size rods and casing were used at the top the holes to stabilise the collars although no samples were taken from the PQ size core.
Drill sample recovery	<ul style="list-style-type: none"> Method of recording and assessing core and chip sample recoveries and results assessed. Measures taken to maximise sample recovery and ensure representative nature of the samples. Whether a relationship exists between sample recovery and grade and whether sample bias may have occurred due to preferential loss/gain of fine/coarse material. 	<ul style="list-style-type: none"> Diamond drilling core recoveries ranged between 85% and 100% for all holes with no significant issues noted.
Logging	<ul style="list-style-type: none"> Whether core and chip samples have been geologically and geotechnically logged to a level of detail to support appropriate Mineral Resource estimation, mining studies and metallurgical studies. Whether logging is qualitative or 	<ul style="list-style-type: none"> All holes were field logged by company geologists. Lithological, alteration and mineralogical nomenclature of the deposit as well as sulphide content were recorded. Metallurgical, Geotechnical and structural data has been recorded

Criteria	JORC Code explanation	Commentary
	<p>quantitative in nature. Core (or costean, channel, etc) photography.</p> <ul style="list-style-type: none"> The total length and percentage of the relevant intersections logged. 	<ul style="list-style-type: none"> Photography and recovery measurements were carried out by assistants under a geologist's supervision. All drill holes were logged in full. Logging was qualitative and quantitative in nature.
<p>Sub-sampling techniques and sample preparation</p>	<ul style="list-style-type: none"> If core, whether cut or sawn and whether quarter, half or all core taken. If non-core, whether riffled, tube sampled, rotary split, etc and whether sampled wet or dry. For all sample types, the nature, quality and appropriateness of the sample preparation technique. Quality control procedures adopted for all sub-sampling stages to maximise representivity of samples. Measures taken to ensure that the sampling is representative of the in-situ material collected, including for instance results for field duplicate/second-half sampling. Whether sample sizes are appropriate to the grain size of the material being sampled. 	<ul style="list-style-type: none"> NTW core cut in half using a core saw. Typically, the core was sampled to major geological intervals as defined by the geologist within the even two metre sample intervals utilised. All samples were collected from the same side of the core. Sample sizes are considered appropriate to correctly represent the moderately nuggetty gold mineralisation based on: the style of mineralisation, the thickness and consistency of the intersections, the sampling methodology and assay value ranges for Au. The entire sample was crushed to 70% passing 2mm. Crushed sample was split to produce 500g sample for analysis and the remaining reject kept for checks. Field QC procedures involved the use of 2 types of certified reference materials (1 in 20) which is certified by Geostats Ltd, Primary DD duplicate: Generated by cutting the remaining half core into a ¼ and sampled. Coarse blank samples: Inserted 1 in every 20 samples Laboratory Internal Duplicates and Standards Sample sizes are considered appropriate to correctly represent the moderately nuggetty gold mineralisation based on: the style of mineralisation, the thickness and consistency of the intersections, the sampling methodology and assay value ranges for gold
<p>Quality of assay data and laboratory tests</p>	<ul style="list-style-type: none"> The nature, quality and appropriateness of the assaying and laboratory procedures used and whether the technique is considered partial or total. For geophysical tools, spectrometers, handheld XRF instruments, etc, the parameters used in determining the analysis including instrument make and model, reading times, calibrations factors applied and their derivation, etc. Nature of quality control procedures 	<ul style="list-style-type: none"> The analytical technique used is ChrysoTM PhotonAssay methodology. This uses a high-energy X-ray source that is used to irradiate large mineral samples, typically about 500g compared to the 50g of the fire assay. The X-rays induce short-lived changes in the structure of any gold nuclei present. As the excited gold nuclei return to their ground state, they emit a characteristic gamma-ray signature, the intensity of which is directly proportional to the concentration of gold. The penetrating nature of ChrysoTM PhotonAssay provides much

Criteria	JORC Code explanation	Commentary
	<i>adopted (eg standards, blanks, duplicates, external laboratory checks) and whether acceptable levels of accuracy (i.e. lack of bias) and precision have been established.</i>	<p><i>higher energy than those used in conventional X-ray fluorescence (XRF), which provides a true bulk analysis of the entire sample. Samples are presented into a fully automatic process where samples are irradiated, measured, data collection and reporting.</i></p> <ul style="list-style-type: none"> <i>No geophysical tools were used to determine any element concentrations used for this report.</i> <i>Sample preparation checks for fineness were carried out by the laboratory as part of internal procedures to ensure the grind size of 2mm was being attained. Laboratory QAQC includes the use of internal standards using certified reference material, and pulp replicates. No anomalous assays were noted in information provided to the Client.</i> <i>The QAQC results confirm that acceptable levels of accuracy and precision have been established for the Classifications applied (exploration results only).</i>
Verification of sampling and assaying	<ul style="list-style-type: none"> <i>The verification of significant intersections by either independent or alternative company personnel.</i> <i>The use of twinned holes.</i> <i>Documentation of primary data, data entry procedures, data verification, data storage (physical and electronic) protocols.</i> <i>Discuss any adjustment to assay data.</i> 	<ul style="list-style-type: none"> <i>NA</i> <i>No holes have been twinned</i> <i>No adjustment to assay data</i> <i>Logging records were mostly registered in physical format and were input into a digital format. The core photographs, collar coordinates and down the hole surveys were received in digital format.</i> <i>Assay values that were below detection limit were adjusted to equal half of the detection limit value. Un-sampled intervals were assumed to have no mineralisation and they were therefore set to blank in the database, however these are minimal.</i>
Location of data points	<ul style="list-style-type: none"> <i>Accuracy and quality of surveys used to locate drill holes (collar and down-hole surveys), trenches, mine workings and other locations used in Mineral Resource estimation.</i> <i>Specification of the grid system used.</i> <i>Quality and adequacy of topographic control.</i> 	<ul style="list-style-type: none"> <i>DD collar positions were initially located using a handheld GPS with a location error of +/-3m.</i> <i>The datum employed is WGS84, Zone 29</i> <i>All drill hole locations are then surveyed utilising the differential GPS methods by both company and third party surveyors.</i> <i>DGPS system utilised is typically within a 10 cm accuracy range which is suitable for the classification applied.</i>
Data spacing and distribution	<ul style="list-style-type: none"> <i>Data spacing for reporting of Exploration Results.</i> <i>Whether the data spacing and distribution is sufficient to establish the degree of geological and grade continuity appropriate for the Mineral Resource and Ore Reserve estimation procedure(s) and classifications applied.</i> 	<ul style="list-style-type: none"> <i>Drillholes were completed on variable spacings (between 100-50m lines) and orientations.</i> <i>No mineral resource on this prospect (BDT3).</i> <i>The samples were not composited prior to assay.</i>

Criteria	JORC Code explanation	Commentary
	<ul style="list-style-type: none"> Whether sample compositing has been applied. 	
Orientation of data in relation to geological structure	<ul style="list-style-type: none"> Whether the orientation of sampling achieves unbiased sampling of possible structures and the extent to which this is known, considering the deposit type. If the relationship between the drilling orientation and the orientation of key mineralised structures is considered to have introduced a sampling bias, this should be assessed and reported if material. 	<ul style="list-style-type: none"> Drill holes were drilled approximately at right angles to the anticipated strike of the target geochemical anomaly and orthogonal to the interpreted mineralisation orientation.
Sample security	<ul style="list-style-type: none"> The measures taken to ensure sample security. 	<ul style="list-style-type: none"> Chain of custody is managed by the Client's senior site geologists and geotechnicians. Samples are stored in a core shed at site and samples were delivered to the laboratory by client geologists. Client employees have no further involvement in the preparation or analysis of the samples.
Audits or reviews	<ul style="list-style-type: none"> The results of any audits or reviews of sampling techniques and data. 	<ul style="list-style-type: none"> Detailed reviews of sampling techniques were carried out on the site visit by RPM in October 2024.

Section 2 of the JORC Code, 2012 Edition – Table 1

Criteria	JORC Code explanation	Commentary
Mineral tenement and land tenure status	<ul style="list-style-type: none"> Type, reference name/number, location and ownership including agreements or material issues with third parties such as joint ventures, partnerships, overriding royalties, native title interests, historical sites, wilderness or national park and environmental settings. The security of the tenure held at the time of reporting along with any known impediments to obtaining a licence to operate in the area. 	<ul style="list-style-type: none"> Exploration results are from the Boundiali project area Boundiali DS tenement PR808 ("BD"), 260km², holder DS Resources Joint Venture Company, of which Aurum is 80% share capital owner through its fully owned subsidiary Plusor. There are no impediments to working in the area.
Exploration done by other parties	<ul style="list-style-type: none"> Acknowledgment and appraisal of exploration by other parties. 	<ul style="list-style-type: none"> The exploration results reported in this announcement are from work undertaken by wholly owned subsidiary PlusOr on behalf of Aurum Resources Limited The licence area is known as a prospective region for gold and recent artisanal workings revealed the presence of primary gold mineralisation in artisanal pits and small-scale underground mining.
Geology	<ul style="list-style-type: none"> Deposit type, geological setting and style of mineralisation. 	<ul style="list-style-type: none"> The Boundiali Deposits are located within the Proterozoic Birimian rocks of the Man shield. It is situated on, 100km west of from the Korhogo in the northern part of the Côte d'Ivoire. They are located in the Bagoué- Syama shear zone within the

For personal use only

Criteria	JORC Code explanation	Commentary
		<p><i>sedimentary rock with minor associated intrusions of mafic dykes and late-stage granitoids. The various rock units trend NS to NNE similar to the regional metamorphic grade. The regional trend is NE to N.</i></p> <ul style="list-style-type: none"> <i>The Boundiali deposits resemble typical shear zone deposits of the West African granite-greenstone terrane. The deposits themselves are associated with a major regional shear zone and are developed in a sandstone. Mineralisation may be spatially related to the emplacement of intrusives. The gold mineralisation is mesothermal in origin and occurs as free gold in quartz vein stockworks and zones of silicification, associated with pyrite and chalcopyrite. The gold mineralisation is found in linear zones with the contacts showing evidence of shearing. Free gold is frequently observed. Alteration is weak to strong depending on the development of the system typically being sericite.</i> <i>Two types of deformation are present in the drill cores: ductile deformation and brittle deformation. The gold mineralisation is related to deformed sandstone and graywacke, in shear zones, with sulphides (mainly pyrite and minor chalcopyrite) associated with visible gold. Alteration is characterized by chlorite, sericite, calcite, secondary quartz and disseminated pyrite. This assemblage is well developed in schistose, foliated rocks with presence of quartz veins or veinlets.</i>
<p>Drill hole information</p>	<ul style="list-style-type: none"> <i>A summary of all information material to the understanding of the exploration results including a tabulation of the following information for all Material drill holes:</i> <ul style="list-style-type: none"> <i>easting and northing of the drill hole collar</i> <i>elevation or RL (Reduced Level – elevation above sea level in metres) of the drill hole collar</i> <i>dip and azimuth of the hole</i> <i>down hole length and interception depth</i> <i>hole length</i> <i>If the exclusion of this information is justified on the basis that the information is not Material and this exclusion does not detract from the understanding of the report, the Competent Person should clearly explain why</i> 	<ul style="list-style-type: none"> <i>Complete drill hole data has been provided.</i> <i>Drill hole collar locations are shown in figures in main body of announcement.</i>

Criteria	JORC Code explanation	Commentary
	<i>this is the case.</i>	
Data aggregation methods	<ul style="list-style-type: none"> In reporting Exploration Results, weighting averaging techniques, maximum and/or minimum grade truncations (e.g. cutting of high grades) and cut-off grades are usually Material and should be stated. Where aggregate intercepts incorporate short lengths of high-grade results and longer lengths of low-grade results, the procedure used for such aggregation should be stated and some typical examples of such aggregations should be shown in detail. The assumptions used for any reporting of metal equivalent values should be clearly stated. 	<ul style="list-style-type: none"> Assay Intervals are shown in detail. Drilling intervals are predominantly 1m. Metal equivalent values are not being reported.
Relationship between mineralisation widths and intercept lengths	<ul style="list-style-type: none"> These relationships are particularly important in the reporting of Exploration Results. If the geometry of the mineralisation with respect to the drill hole angle is known, its nature should be reported. If it is not known and only the down hole lengths are reported, there should be a clear statement to this effect (e.g. 'down hole length, true width not known'). 	<ul style="list-style-type: none"> True widths have not been estimated as the geological controls on mineralisation in these initial drill holes into the prospect are not yet well understood. The holes were drilled from east to west to test a steeply east dipping foliation in the limited rock exposures seen in the area. The mineralisation lies within what has been interpreted to be a ductile shear zone which would suggest that mineralisation should lie parallel to foliation.
Diagrams	<ul style="list-style-type: none"> Appropriate maps and sections (with scales) and tabulations of intercepts should be included for any significant discovery being reported. These should include, but not be limited to a plan view of drill hole collar locations and appropriate sectional views. 	<ul style="list-style-type: none"> Appropriate diagrams relevant to material results are shown in the body of this announcement.
Balanced Reporting	<ul style="list-style-type: none"> Accuracy and quality of surveys used to locate drill holes (collar and down-hole surveys), trenches, mine workings and other locations used in Mineral Resource estimation. Where comprehensive reporting of all Exploration Results is not practicable, representative reporting of both low and high grades and/or widths should be practiced to avoid misleading reporting of Exploration Results. 	<ul style="list-style-type: none"> All drill hole and trench collar locations were surveyed utilising handheld GPS methods. Exploration results only being reported. Drilling teams utilised the Reflex EZ-shot instrument to measure deviations in azimuth and inclination angles for all holes; however, vertical holes were not surveyed. The first measurement is taken at 6 m depth, and then at approximately every 30m depth interval and at the end of the hole. being reported
Other substantive exploration data	<ul style="list-style-type: none"> Other exploration data, if meaningful and material, should be reported including (but not limited to): geological observations; geophysical survey results; geochemical survey results; bulk samples - size and method of treatment; metallurgical test results; bulk density, groundwater, 	<ul style="list-style-type: none"> All relevant exploration data is either reported in this announcement or has been reported previously by Aurum, Randgold or Predictive Discovery and is referred to in the announcement.

For personal use only

Criteria	JORC Code explanation	Commentary
	<i>geotechnical and rock characteristics; potential deleterious or contaminating substances.</i>	
Further work	<ul style="list-style-type: none"> <i>The nature and scale of planned further work (e.g. tests for lateral extensions or depth extensions or large-scale step-out drilling).</i> <i>Diagrams clearly highlighting the areas of possible extensions, including the main geological interpretations and future drilling areas, provided this information is not commercially sensitive.</i> 	<ul style="list-style-type: none"> <i>The Company intends to continue exploration on the project and this work will include auger, aircore, RC and diamond core drilling, along with further geophysical surveys and geochemical sampling programs.</i> <i>Diagrams included in body of report as deemed appropriate by competent person</i>