

VIKING INTERSECTS HIGH GRADE GOLD WITH VISIBLE GOLD IN RIVERINA EAST DRILLING

- Vikings greenfields drilling programme has delivered a high-grade visible gold intercept, which remains open with no drilling for 1.7km North and 1.1km South
- Assays received from the Riverina East Project Bifrost Target has returned significant intercepts >0.5g/t Au cut off in hole VKRC0180 including:
 - **2m at 23.6g/t Au from 124m (with visible gold)**
 - **1m at 3.2g/ Au from 112m**
 - **1m at 1.5g/t from 108m**
- The intercepts occur within two broader gold anomalous zones >50ppb of:
 - **6m at 8.0g/t Au from 123m**
 - **21m at 0.4g/t Au from 96m**
- The visible gold and extent of the broad gold anomaly is interpreted to represent a significant volume of mineralising fluid flow through the host rocks, highlighting the significant potential of the discovery
- Mineralisation is hosted within dolerite, which is known to be a favourable host to major gold deposits (e.g. Defiance Dolerite at the multi-Moz St Ives Gold Camp - Gold Fields)
- Mineralisation is open along strike and down dip with planning underway for immediate follow up to test for high grade extensions from VKRC0180
- 700m to the west, VKRC0178 returned **1m at 3.3g/t Au from 51m** and ~35m up-dip from previously reported VKRC0117: **1m at 2.3g/t Au from 98m**, providing another structure/target for follow up drilling
- Assays returned for 72% of the 5,956m completed in the Phase 2 drilling programme
- Viking's exploration programme is testing the Riverina East Project which encompasses 25km strike length of the Zuleika Shear with Ora Banda Mining's (ASX:OBM) >1.3Moz Riverina/Mulline Camp just 4km to the SW and 1.2Moz Davyhurst Camp 40km to the S

Viking Mines' Managing Director & CEO Julian Woodcock said:

"This is an exceptional result in an underexplored area of the Riverina East Project. The drilling result at Bifrost is exactly the style and type of mineralisation we have been targeting with our exploration programme.

"We hold 25km of strike length along the prolific Zuleika Shear and it is renowned to host multiple significant deposits which are characterised by narrow veins, often <2m thickness but with exceptionally high grades.

"The intercept is located within an underexplored area of the Bifrost Target, open along strike and downdip, and has confirmed the potential for the project to deliver high grade gold in a prolific gold district, at a time of record gold price.

"I look forward to receiving the results from the remainder of the Phase 2 drilling programme and updating the market as they are received."

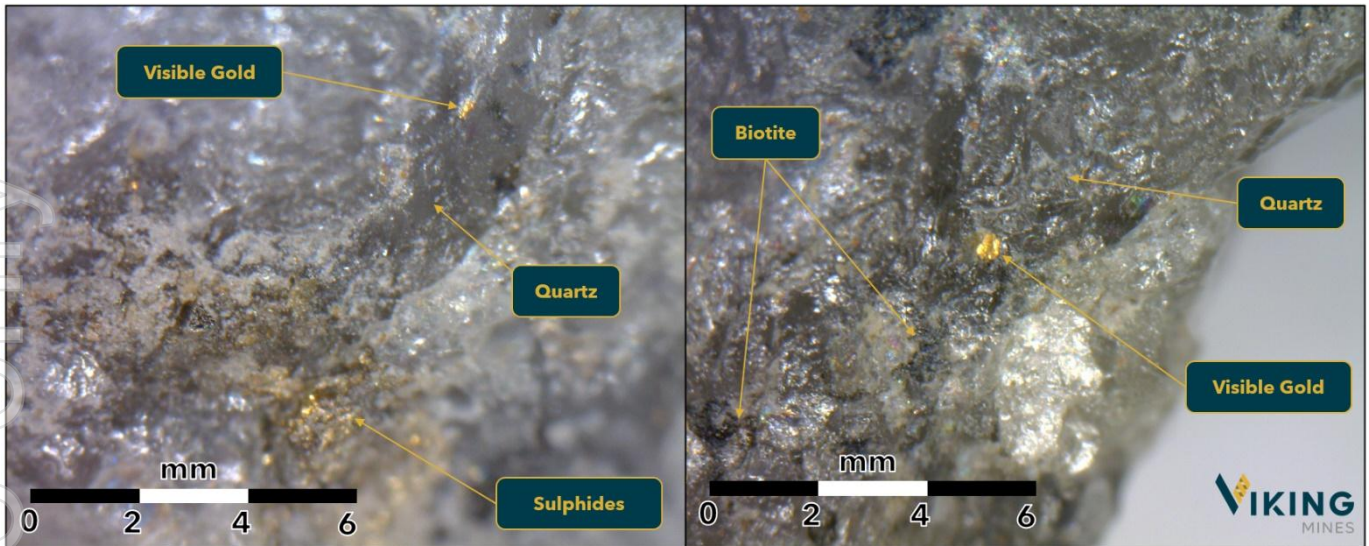


Figure 1; Photograph of RC chips from 125m downhole in VKRC0180 which assayed 45.5g/t Au. Image shows quartz vein with visible gold, sulphides and biotite.

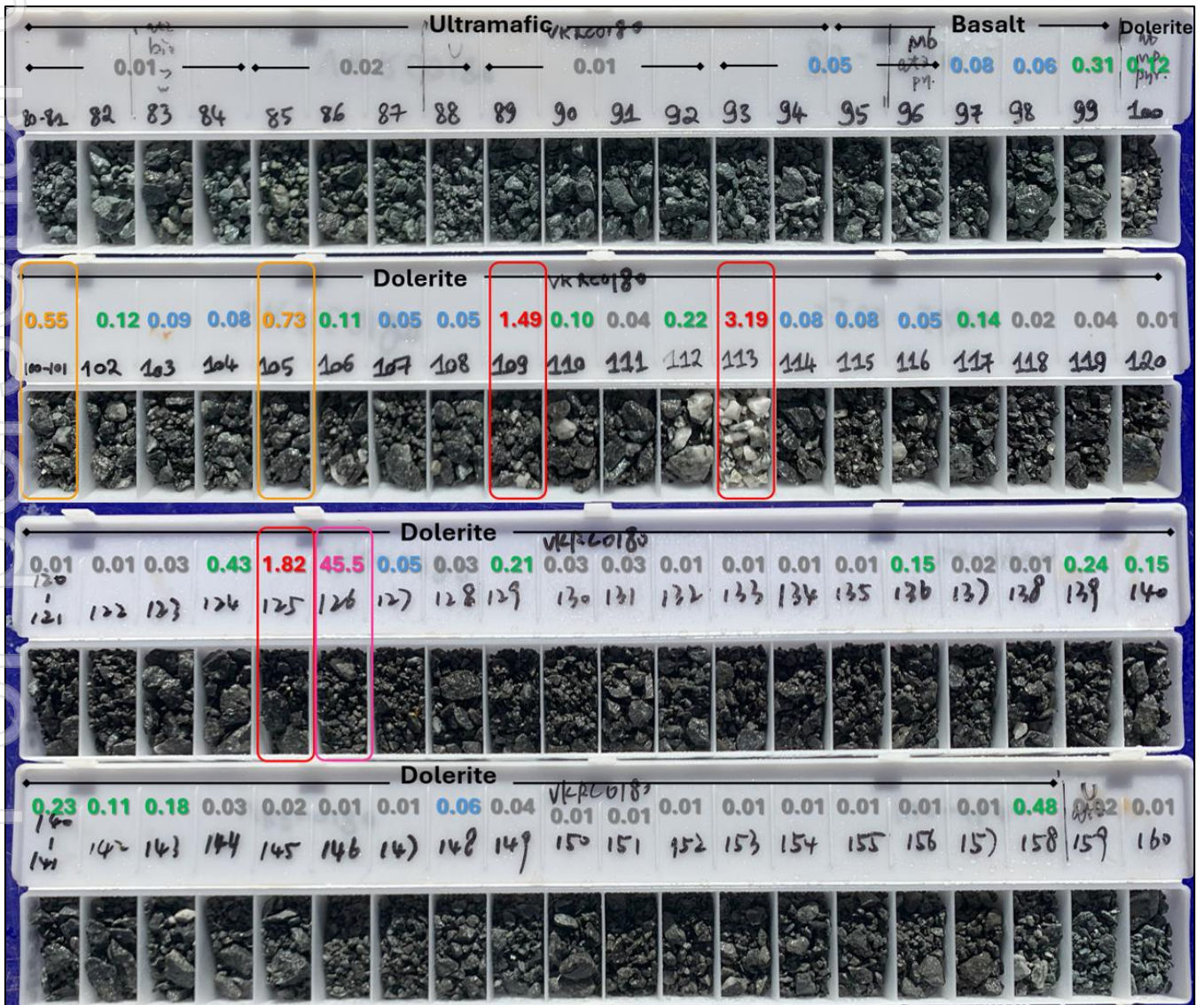


Figure 2; Photo of chip samples from VKRC0180 from 80m to 160m with grades in g/t Au and host rock annotated. Not strong low-grade anomaly throughout the intercept and includes 45.5g/t au from 125m.



Viking Mines Limited (ASX: VKA) ("Viking" or "the Company") is pleased to announce results for 33 drillholes (4,308m) representing ~72% of the phase 2 exploration programme recently completed at the Riverina East Project ("Riverina East"), targeting both the Central Duplex Target ("CDT") and infill/step out drilling at the Bifrost Target ("Bifrost").

At Bifrost, assays have confirmed a significant intercept in hole VKRC0180 of 2m at 23.6g/t Au from 124m with visible gold, contained within three broader anomalous gold zones >50ppb of 21m at 0.4g/t Au from 96m, 6m at 8.0g/t Au from 123m and 8m at 0.2g/t Au from 135m.

BIFROST SOUTH TARGET DRILLING RESULTS

The recently completed Phase 2 drill programme¹ included two new drillholes (VKRC0179 and VKRC0180) and one extension (VKRC0102) to follow up on previously reported results from hole VKRC0103² (23m at 0.4g/t Au from 97m incl. 5m at 1.0g/t from 102m and 3m at 1.3g/t from 115m) (Figure 4, Figure 5 & Figure 6).

Both new holes intercepted anomalous and elevated gold mineralisation over broad zones and are associated with quartz veining, biotite alteration, sulphides and are hosted in a dolerite rock unit (Figure 2). VKRC0180 returned the most significant intercept of **2m at 23.6g/t Au** from 124m with visible gold (Figure 1).

There is further encouragement within VKRC0180 with additional intercepts of 1m at 1.5g/t Au from 108m and 3.2g/t Au from 112m. Of particular interest is the 2m thick quartz vein intersected from 111m (Figure 1).

The vein confirms the capacity of the system to generate thicker gold hosting quartz veins in the area being explored. In addition, having multiple vein positions downhole presents additional opportunity for several zones of mineralisation to be intersected across the target area.

Gold Haloes

All intercepts reported within VKRC0180 occur within two broader anomalous gold haloes >50ppb (Figure 6) and an additional zone with low grade anomalism of:

- 21m at 0.4g/t Au from 96m
- 6m at 8.0g/t Au from 123m
- 8m at 0.2g/t Au from 135m

The significance of these broader gold zones is twofold. Firstly, the broad gold anomaly is interpreted to represent a significant volume of mineralising fluid flow through the host rocks highlighting the potential of the system discovered. Secondly, the larger zones support the geochemical data collected via auger sampling and the exploration model being followed.

A key observation is the intensity of the gold anomaly is increasing substantially with depth (as seen in hole VKRC0179 vs VKRC0180: Figure 6) and vectoring towards a deeper follow up target.

Mineralisation Style

These intercepts are significant due to the style of mineralisation being explored for being narrow vein high grade gold which is characteristic of deposits found along the Zuleika shear, including Ora Banda Mining's (ASX:OBM) high grade Riverina Deposit 10.6km to the SW (Figure 3). The thickness of the veins intersected at Riverina is comparable to that intercepted in hole VKRC0180 and demonstrating the significant potential that exists at Bifrost.

¹ VKA ASX Announcement 12 March 2025 - Viking Commences ~6,000m RC Drilling Programme at First Hit

² VKA ASX Announcement 25 February 2025 - Viking Hits Gold in 2nd Regional Drill Traverse, 1.7km South

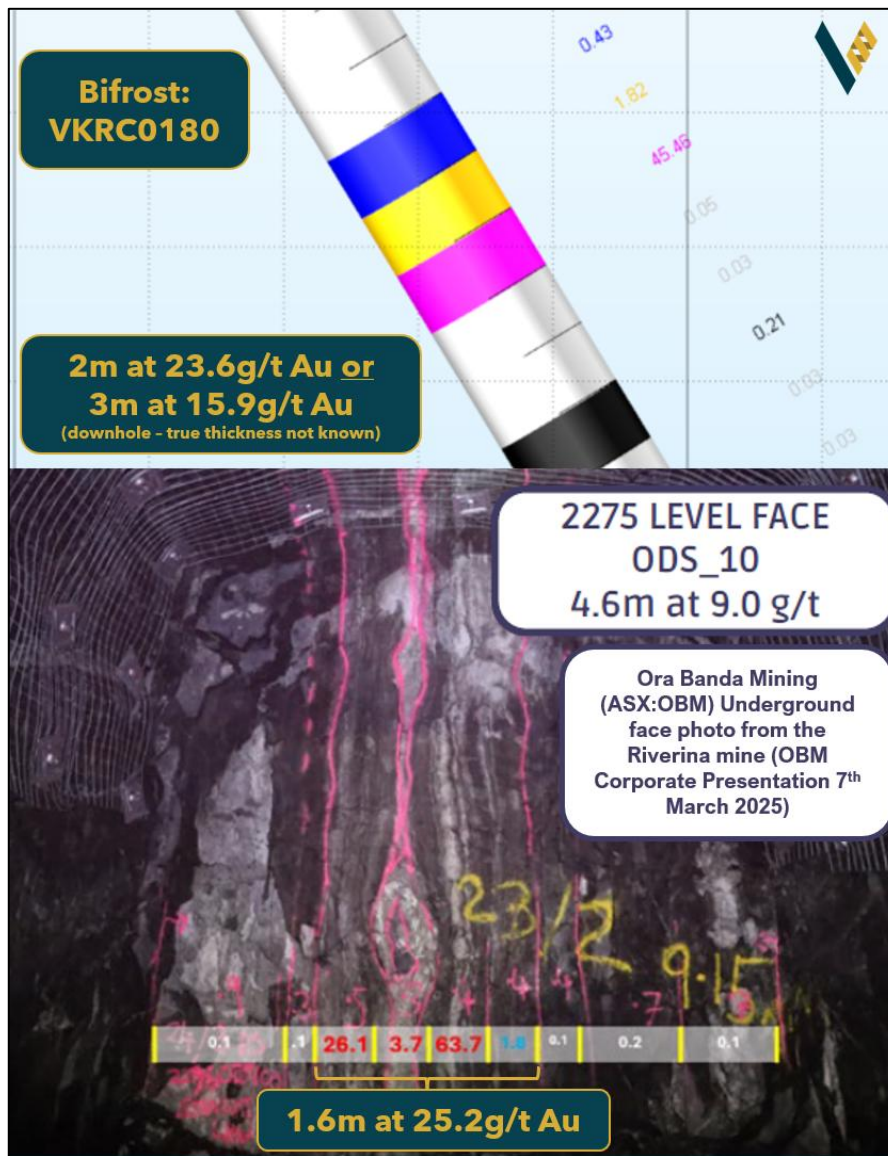


Figure 3; Section through drillhole VKRC0180 drawn at the same scale as underground face photograph taken from the Ora Banda Mining corporate presentation from 7th March 2025. Image illustrates the type and style of mineralisation being explored for by Viking.

Host Rocks

All mineralisation is within a dolerite rock unit (Figure 5 & Figure 6). This has significance as it is a different mafic unit compared to the more extensive and ductile ultramafic rocks encountered in much of the regional drilling. Dolerites are more brittle which provides a rheological contrast to the surrounding ultramafics. This results in a preferential host rock for mineralisation. This is demonstrated within regional significant gold deposits hosted within dolerites, such as many deposits associated with the Defiance Dolerite at the multi-Moz St Ives gold camp (Gold Fields).

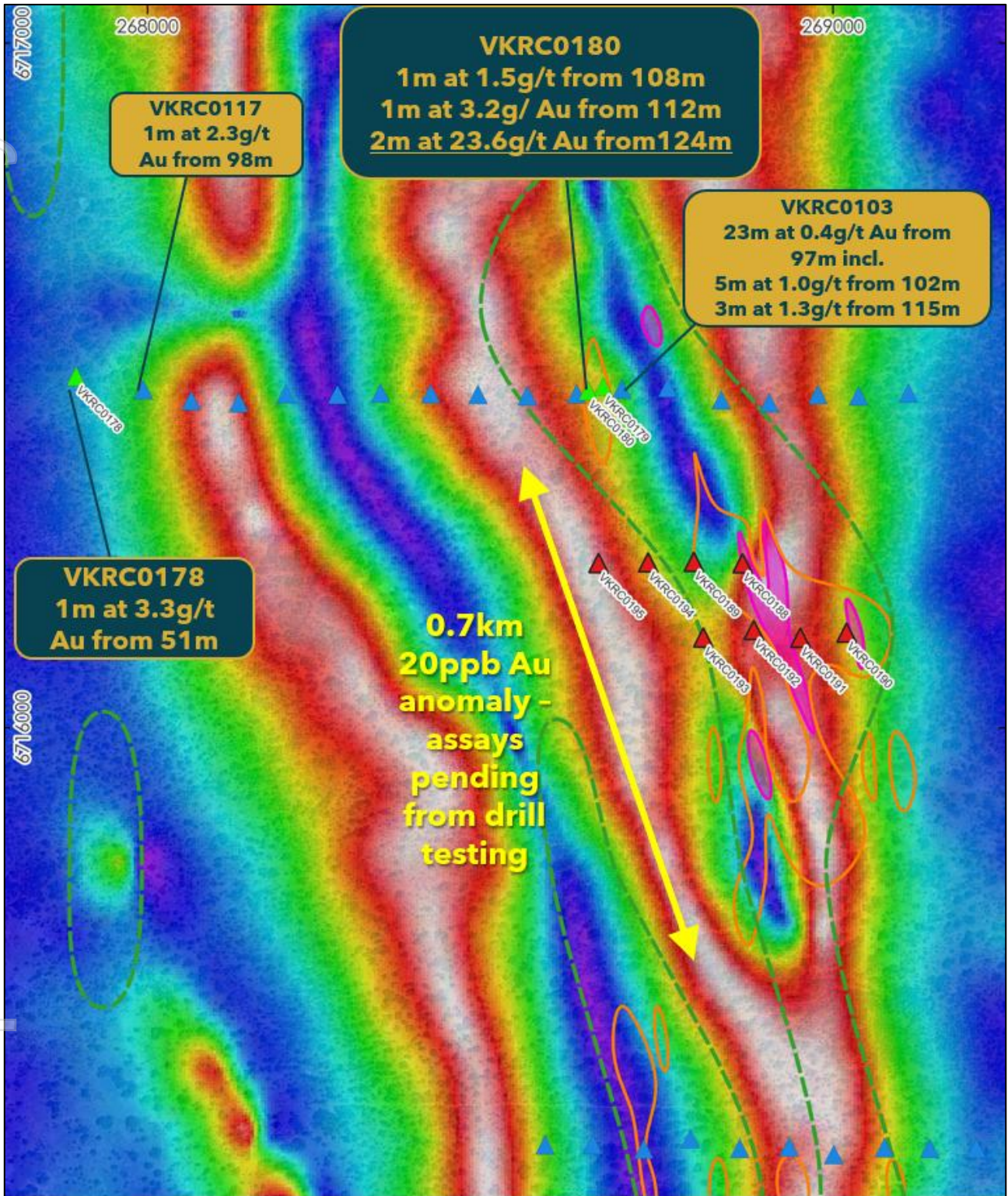
Additional Target

In addition to the holes reported above, drillhole VKRC0178 was drilled testing updip of Phase 1 drillhole VKRC0117 which returned² 1m at 2.3g/t Au from 98m. Again, the target meets the Company's criteria for follow up due to being narrow vein and in the 1-5 gram metre range. Hole VKRC0178 was successful in confirming a sub-vertical trend and returned **1m at 3.3g/t Au from 51m**, approximately 35m updip (above) the VKRC0178 intercept (Figure 5).

Mineralisation is characterised by quartz veining and intense biotite shearing and alteration. This result confirms a second target structure at the Bifrost target warranting further follow up. The Company continues to interpret the geology at this location and will plan follow up activity for the next round of drilling.



For personal use only



VKRC0178
1m at 3.3g/t Au from 51m

VKRC0117
1m at 2.3g/t Au from 98m

VKRC0180
1m at 1.5g/t from 108m
1m at 3.2g/ Au from 112m
2m at 23.6g/t Au from 124m

VKRC0103
23m at 0.4g/t Au from 97m incl.
5m at 1.0g/t from 102m
3m at 1.3g/t from 115m

**0.7km
20ppb Au
anomaly -
assays
pending
from drill
testing**



BIFROST TARGET - DRILLHOLE COLLAR MAP



- | VKA Drillhole Status | | VKA Auger Soils - Au ppb | |
|--------------------------------------|-----------------------------------|---|-----------|
| ▲ | Phase 1 Completed RC Drillholes | | 10ppb Au |
| ▲ | Phase 2 RC holes: Assays Received | | 20 ppb Au |
| ▲ | Phase 2 RC holes: Assays Pending | | 40 ppb Au |

Figure 4; Map showing the Bifrost South Target area with large gold anomaly defined by auger drilling and phase 2 RC drilling results. Note eight drillholes with assays still pending.



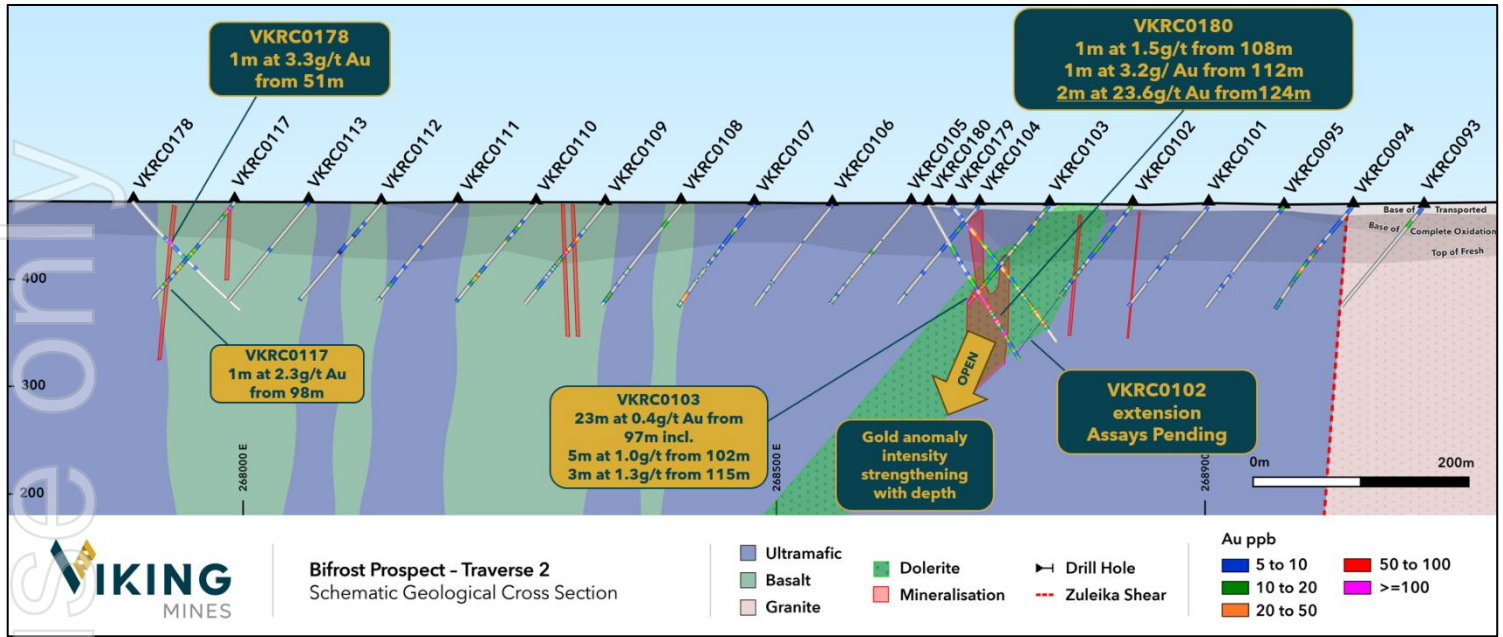


Figure 5; Cross section through Bifrost South target area on traverse 2 showing new drillhole results and previously reported drillhole results. Note two target areas in the western and central positions on the traverse.

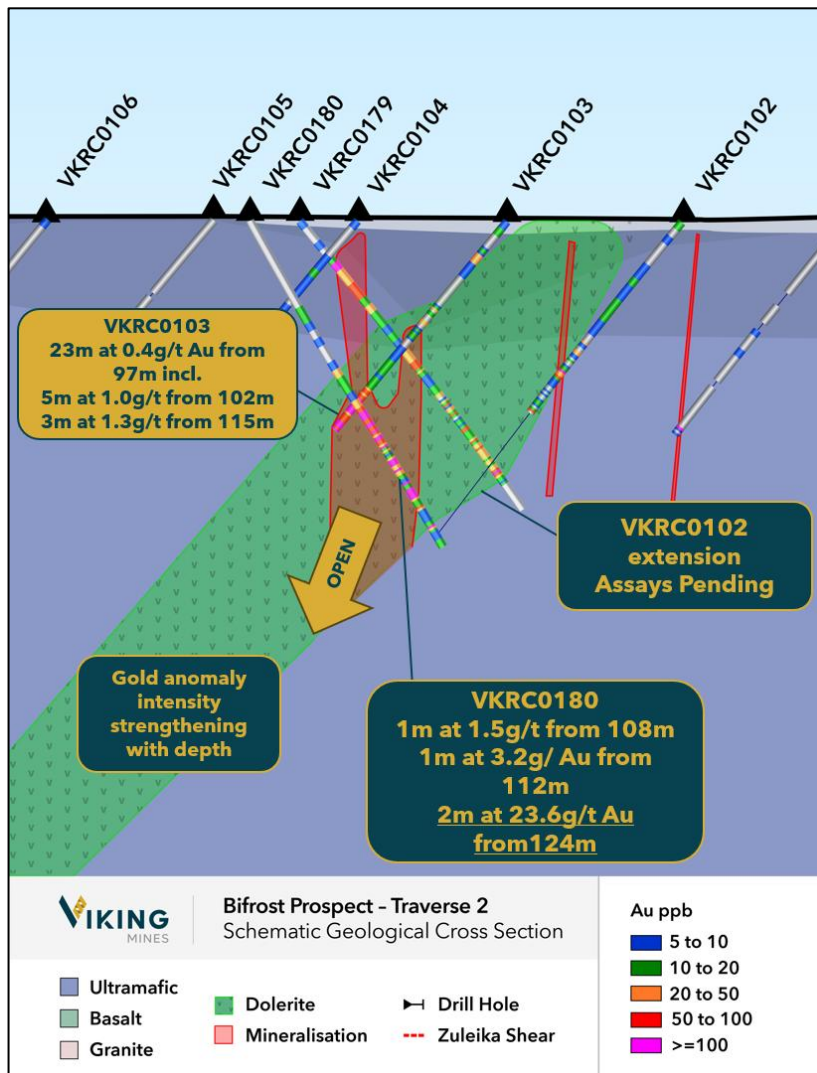


Figure 6; Cross section focussing on holes VKRC0103 and VKRC0180 showing location of high-grade intercepts including 2m at 23.6g/t Au.



CENTRAL DUPLEX TARGET

31 holes for 3,624 metres were drilled at the Central Duplex Target across four wide spaced traverses as a first pass programme (Figure 8) designed to test the bedrock geology and identify potential gold hosting structures for follow up drilling.

Results have been received for 30 holes and have defined multiple gold anomalous zones >50ppb of various intensity across 3 of the 4 traverses. Work is ongoing with the interpretation and assessment of pathfinder geochemistry is yet to be completed. Observations include zones of high arsenic as well as other pathfinder signatures including bismuth, tellurium and antimony, all typical of orogenic gold mineralised systems.

The objective of the wide spaced drilling at the CDT is to identify structural pathways which display characteristics of gold mineralisation. Although no significant intercepts have been encountered (highest returned in hole VKRC0155 with 1m at 1.5g/t Au from 38m), the presence of multiple ppb pathways and supporting pathfinder geochemistry as well as some very significant and broad alteration zones indicates potential for this target area to host gold mineralisation (Figure 7).

The Company will continue to assess the results and plan follow up activity which may include further infill auger drilling and potential for follow up RC drill testing.

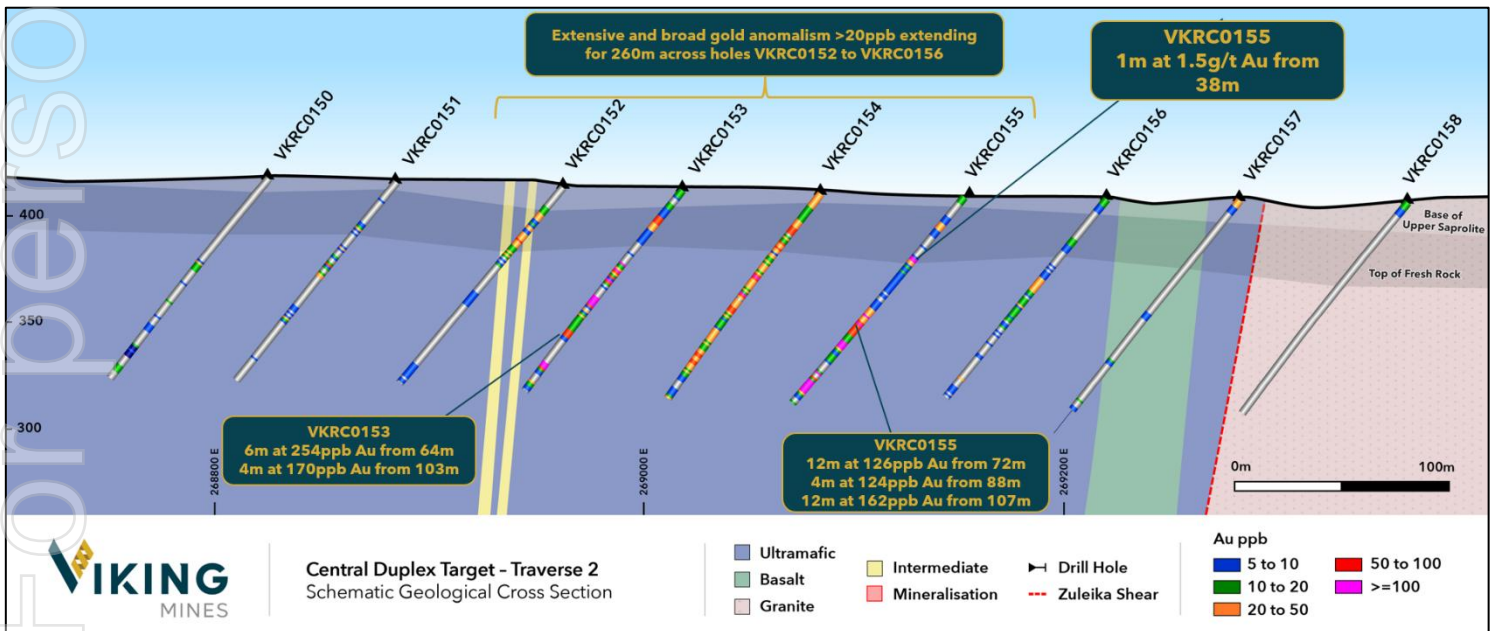
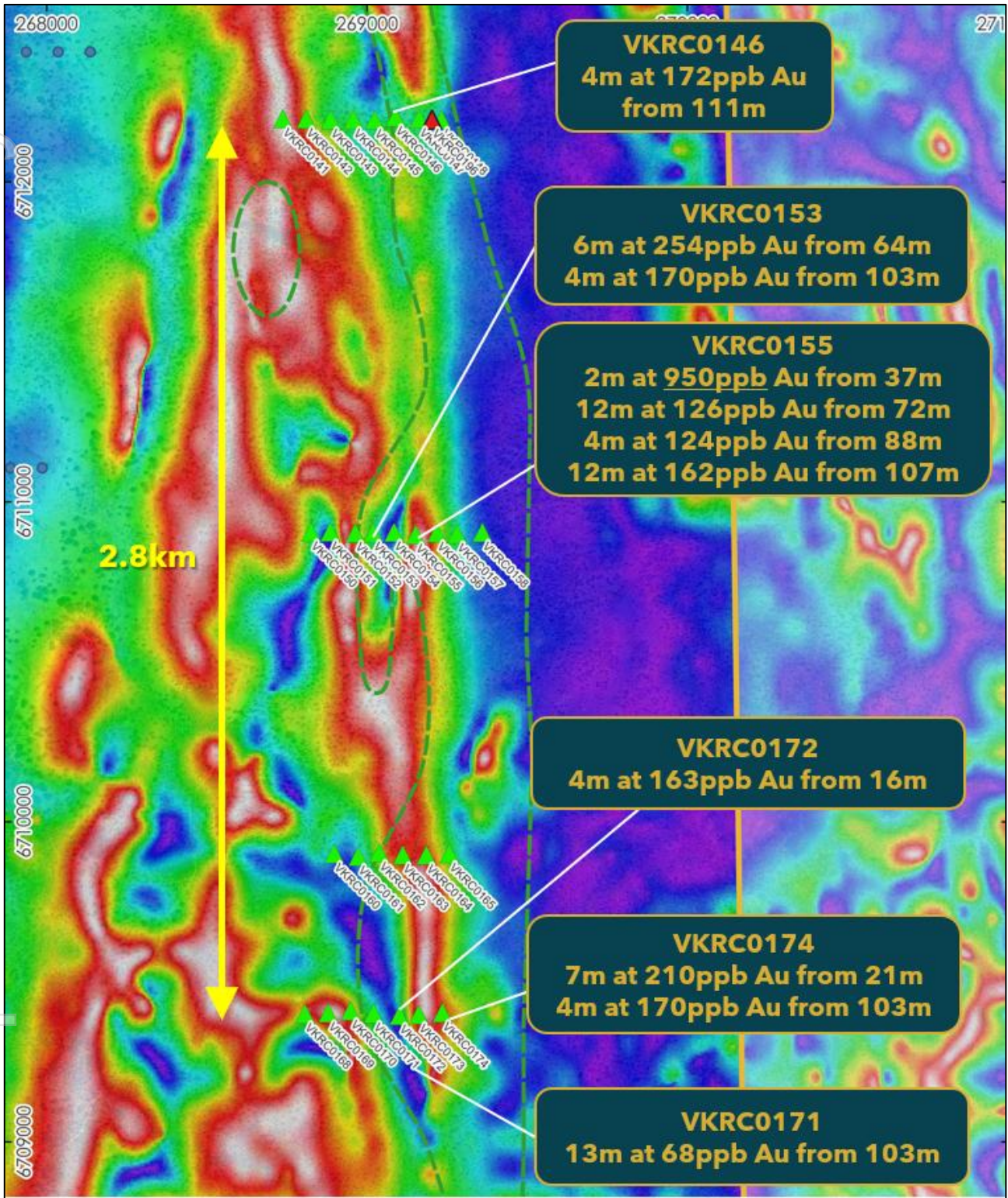


Figure 7; Cross section through the Central Duplex Target Traverse 2. Section highlights broad zone of gold anomalism, with holes annotated and zones of higher >100ppb results (pink). Note 1m at 1.5g/t Au in holes VKRC0155.





For personal use only



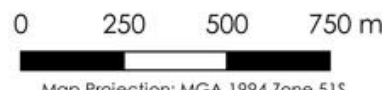
CENTRAL DUPLEX TARGET - DRILLHOLE COLLAR MAP

VKA Drillhole Status

- ▲ Phase 2 RC holes: Assays Received
- ▲ Phase 2 RC holes: Assays Pending

VKA Auger Soils - Au ppb

- 10ppb Au



Map Projection: MGA 1994 Zone 51S

Historical Drilling

- RAB/AC

Figure 8; Map showing selected results from the Central Duplex Target received in wide spaced drilling over a 2.8km strike length. Multiple zones of anomalism have been identified and follow up geochemistry evaluation is ongoing.



NEXT STEPS

The Company continues to advance exploration activities with the objective of the discovery of new gold deposits on the highly prospective tenement package at the Riverina East Project (formerly the First Hit Project). The following activities are underway;

- Receipt, QAQC verification and interpretation of the remaining assays for the Phase 2 programme.
- Commence planning for immediate follow up drilling at Bifrost to test for high grade extensions from VKRC0180 which returned 2m at 23.6g/t Au.
- Completion of high-resolution magnetic geophysics to assist targeting and structural interpretation to provide focus areas for follow up drilling over this large expansive target area.
- Completion of the First Hit Mine underground mining assessment.

We look forward to providing updates to the market as advancements are made with the Project.

END

This announcement has been authorised for release by the Board of the Company.

Julian Woodcock
Managing Director and CEO
Viking Mines Limited

For further information, please contact:
Michaela Stanton-Cook - Company Secretary
Viking Mines Limited
contact@vikingmines.com

Forward-Looking Statements

This document may include forward-looking statements. Forward-looking statements include, but are not limited to, statements concerning Viking Mines Limited's planned exploration program and other statements that are not historical facts. When used in this document, the words such as "could," "plan," "estimate," "expect," "intend," "may", "potential," "should," and similar expressions are forward-looking statements. Although Viking Mines Limited believes that its expectations reflected in these forward-looking statements are reasonable, such statements involve risks and uncertainties and no assurance can be given that actual results will be consistent with these forward-looking statements.

Competent Persons Statement - Exploration Results

Information in this release that relates to Exploration Results is based on information compiled by Mr Julian Woodcock, who is a Member and of the Australian Institute of Mining and Metallurgy (MAusIMM(CP) - 305446). Mr Woodcock is a full-time employee of Viking Mines Ltd. Mr Woodcock has sufficient experience which is relevant to the style of mineralisation and type of deposit under consideration and to the activity being undertaken to qualify as a Competent Person as defined in the 2012 Edition of the 'Australasian Code for Reporting of Exploration Results, Mineral Resources and Ore Reserves'. Mr Woodcock consents to the disclosure of the information in this report in the form and context in which it appears.



RIVERINA EAST (FORMERLY FIRST HIT) PROJECT, WESTERN AUSTRALIA

The **Riverina East Project** is centred around the historic high-grade First Hit gold mine situated along the prospective Ida and Zuleika Shear zones in the Eastern Goldfields of Western Australia. The Project incorporates 479.9km² of tenements with 7 active Mining and Prospecting licences, 5 Exploration licences, and 3 Exploration licences under application. At the core of this landholding is a 6.4km² group of contiguous tenements that host the historic First Hit Gold Mine.

Prior to closure of the First Hit Gold Mine by Barra Resources in 2002 and at a time of depressed gold prices of US\$320/oz, the First Hit mine produced ~30k ounces of gold at an average grade of ~7.7g/t Au. The Company is focused on delivering exploration programmes to test near mine extensions and regional targets around the First Hit Project with the objective of defining fertile structures and discovering gold ounces.

The Project area is well serviced by infrastructure and is located 50km west of the sealed Goldfields highway and the township of Menzies. The nearest operating Gold Processing Plant is the Davyhurst Mill 40km to the south, owned and operated by Ora Banda Mining (ASX:OBM). The nearest operating gold mine is the Riverina underground operations, located 8km south of the First Hit gold mine, owned by OBM.





APPENDIX 1 - DATA SOURCES FOR MINERAL RESOURCE ESTIMATES AND MINE PRODUCTION REFERENCED.

Riverina-Mulline Camp

Historical production: 305koz Au⁵
Measured, Indicated & Inferred Mineral Resource: 854koz Au⁶
OBM Production (FY21-23): 170koz Au^{7,8,9}
TOTAL: 1,333koz

Central Davyhurst Camp

Historical production: 811koz Au¹
2024 Indicated & Inferred Mineral Resource: 396koz Au²
TOTAL: 1,207koz Au

Bullant

Historic Production: 354koz Au³
Measured, Indicated & Inferred Mineral Resource: 462koz Au⁴
TOTAL: 816koz

Kundana Camp

Historic Production to June 2020: 2.75Moz Au¹⁰
FY21 to FY24 Production: 291,853oz Au^{11,12,13,14}
Current Ore Reserves: 464koz Au¹⁵
Frogs Leg Mineral Resources: 770koz Au¹⁶
TOTAL 4.28Moz

Mt Ida

Historical production: 290koz Au¹⁹
2024 Indicated & Inferred Mineral Resource: 752koz Au²⁰
TOTAL: 1,042koz Au

Bottle Creek

Historic Production: 90koz Au¹⁷
Alt Resources Quarterly Report 30 June 2020 - JORC Resource & Reserve Table: 370koz Au¹⁷
TOTAL 460koz

Map Source References

- 1) <https://orabandamining.com.au/projects/davyhurst/>
- 2) <https://orabandamining.com.au/download/annual-mineral-resource-and-ore-reserve-statement/?wpdmdl=12926&refresh=6736d249d1fcd1731646025>
- 3) <https://www.miningnews.net/precious-metals/news/1233885/bullant-gold-packs-bite>
- 4) <https://nortongoldfields.com.au/bullant/>
- 5) <https://orabandamining.com.au/projects/davyhurst/>
- 6) <https://orabandamining.com.au/download/annual-mineral-resource-and-ore-reserve-statement/?wpdmdl=12926&refresh=6736d249d1fcd1731646025>
- 7) <https://orabandamining.com.au/download/annual-report-for-the-year-ended-30-june-2021/?wpdmdl=7200&refresh=6736e1d72a3a51731650007>
- 8) <https://orabandamining.com.au/download/annual-report-for-the-year-ended-30-june-2022/?wpdmdl=8803&refresh=6736e1d71beab1731650007>
- 9) <https://orabandamining.com.au/download/annual-report-2023/?wpdmdl=11152&refresh=6736e1d703e691731650007>
- 10) <https://randmining.com.au/projects/east-kundana-joint-venture/>
- 11) <https://app.sharelinktechnologies.com/announcement/asx/44dfa9bc8eaaa574af7cfda9564c595>
- 12) <https://app.sharelinktechnologies.com/announcement/asx/690381347ddb79dc8261b0f775636da7>
- 13) <https://app.sharelinktechnologies.com/announcement/asx/b13d0741e08843fb98f0e8c8be20eaaa>
- 14) <https://app.sharelinktechnologies.com/announcement/asx/00592059cc0f5c205e3eb6cfa25f3e4d>
- 15) <https://evolutionmining.com.au/storage/2024/02/2680687-Annual-Mineral-Resources-and-Ore-Reserves-Statement.pdf>
- 16) <https://evolutionmining.com.au/storage/2015/08/01647903.pdf>
- 17) <https://www.asx.com.au/asxpdf/20171108/pdf/43p1pnwsv6kd3g.pdf>
- 18) <https://www.asx.com.au/asxpdf/20200814/pdf/44lj6rj9wqk8r0.pdf>
- 19) https://en.wikipedia.org/wiki/Mount_Ida_Gold_Mine
- 20) <https://deltalithium.com.au/our-projects/mt-ida-lithium-gold/>



APPENDIX 2 - RC DRILLING COLLAR AND RESULTS TABLES

Hole ID	Hole Type	East (m) MGA94 Zone 51	North (m) MGA94 Zone 51	RL	End of Hole (m)	Azi (°)	Dip (°)
VKRC0141	RC	268737	6712198	419	160	090	-60
VKRC0142	RC	268810	6712197	418	120	090	-50
VKRC0143	RC	268886	6712195	415	120	090	-50
VKRC0144	RC	268957	6712195	414	120	090	-50
VKRC0145	RC	269023	6712194	413	132	090	-50
VKRC0146	RC	269089	6712203	413	138	090	-50
VKRC0147	RC	269163	6712197	412	74	090	-50
VKRC0148	RC	269232	6712195	412	30	090	-50
VKRC0150	RC	268825	6710906	417	120	270	-50
VKRC0151	RC	268885	6710906	415	120	270	-50
VKRC0152	RC	268963	6710903	413	120	270	-50
VKRC0153	RC	269019	6710905	411	120	270	-50
VKRC0154	RC	269084	6710905	410	120	270	-50
VKRC0155	RC	269152	6710898	408	126	270	-50
VKRC0156	RC	269218	6710904	407	120	270	-50
VKRC0157	RC	269281	6710900	407	140	270	-50
VKRC0158	RC	269360	6710905	406	126	270	-50
VKRC0160	RC	268897	6709901	406	120	090	-50
VKRC0161	RC	268972	6709892	406	120	090	-50
VKRC0162	RC	269038	6709904	406	126	090	-50
VKRC0163	RC	269111	6709897	405	120	090	-50
VKRC0164	RC	269185	6709897	405	126	090	-50
VKRC0165	RC	269257	6709901	404	120	090	-50
VKRC0168	RC	268806	6709401	408	120	090	-50
VKRC0169	RC	268879	6709404	407	120	090	-50
VKRC0170	RC	268949	6709411	406	132	090	-50
VKRC0171	RC	269020	6709402	405	120	090	-50
VKRC0172	RC	269101	6709396	405	120	090	-50
VKRC0173	RC	269161	6709398	404	120	090	-50
VKRC0174	RC	269235	6709404	404	108	090	-50
VKRC0178	RC	267896	6716513	425	144	090	-50
VKRC0179	RC	268665	6716499	421	162	090	-50
VKRC0180	RC	268643	6716492	422	168	090	-60
VKRC0181	RC	268794	6718261	425	120	270	-50
VKRC0182	RC	268751	6718259	426	120	270	-50
VKRC0183	RC	268770	6718333	426	120	270	-50
VKRC0184	RC	268813	6718331	424	120	270	-50
VKRC0185	RC	268728	6718120	426	120	270	-50
VKRC0186	RC	268774	6718099	425	120	270	-50
VKRC0187	RC	268638	6718114	428	120	270	-50
VKRC0188	RC	268868	6716240	421	120	090	-50
VKRC0189	RC	268797	6716243	420	126	090	-50
VKRC0190	RC	269020	6716139	419	78	090	-50
VKRC0191	RC	268952	6716132	419	132	090	-50
VKRC0192	RC	268884	6716143	420	120	090	-50
VKRC0193	RC	268811	6716132	420	138	090	-50
VKRC0194	RC	268730	6716242	420	120	090	-50
VKRC0195	RC	268658	6716241	420	120	090	-50
VKRC0196	RC	269203	6712195	412	60	090	-50

For personal use only





For personal use only

Hole ID	Depth From (m)	Depth To (m)	Length (m)	Au ppb	Au g/t
VKRC0141	0	4	4	2	0.00
VKRC0141	4	8	4	2	0.00
VKRC0141	8	12	4	2	0.00
VKRC0141	12	16	4	4	0.00
VKRC0141	16	20	4	2	0.00
VKRC0141	20	24	4	4	0.00
VKRC0141	24	28	4	4	0.00
VKRC0141	28	32	4	4	0.00
VKRC0141	32	36	4	15	0.02
VKRC0141	36	37	1	10	0.01
VKRC0141	37	38	1	7	0.01
VKRC0141	38	39	1	3	0.00
VKRC0141	39	40	1	3	0.00
VKRC0141	40	41	1	2	0.00
VKRC0141	41	42	1	2	0.00
VKRC0141	42	43	1	<5	<0.005
VKRC0141	43	44	1	<5	<0.005
VKRC0141	44	45	1	<5	<0.005
VKRC0141	45	46	1	2	0.00
VKRC0141	46	47	1	2	0.00
VKRC0141	47	48	1	2	0.00
VKRC0141	48	49	1	5	0.01
VKRC0141	49	50	1	19	0.02
VKRC0141	50	51	1	3	0.00
VKRC0141	51	52	1	2	0.00
VKRC0141	52	56	4	2	0.00
VKRC0141	56	60	4	2	0.00
VKRC0141	60	64	4	3	0.00
VKRC0141	64	68	4	2	0.00
VKRC0141	68	72	4	2	0.00
VKRC0141	72	76	4	1	0.00
VKRC0141	76	80	4	2	0.00
VKRC0141	80	81	1	<5	<0.005
VKRC0141	81	82	1	<5	<0.005
VKRC0141	82	83	1	5	0.01
VKRC0141	83	84	1	4	0.00
VKRC0141	84	85	1	2	0.00
VKRC0141	85	86	1	5	0.01
VKRC0141	86	87	1	<5	<0.005
VKRC0141	87	88	1	2	0.00
VKRC0141	88	89	1	2	0.00
VKRC0141	89	90	1	2	0.00
VKRC0141	90	91	1	3	0.00
VKRC0141	91	92	1	5	0.01
VKRC0141	92	96	4	7	0.01
VKRC0141	96	100	4	5	0.01
VKRC0141	100	104	4	4	0.00
VKRC0141	104	105	1	2	0.00
VKRC0141	105	106	1	3	0.00
VKRC0141	106	107	1	2	0.00
VKRC0141	107	108	1	3	0.00
VKRC0141	108	112	4	3	0.00
VKRC0141	112	116	4	2	0.00
VKRC0141	116	120	4	2	0.00
VKRC0141	120	124	4	4	0.00
VKRC0141	124	128	4	2	0.00
VKRC0141	128	132	4	3	0.00
VKRC0141	132	136	4	3	0.00
VKRC0141	136	140	4	2	0.00
VKRC0141	140	144	4	2	0.00
VKRC0141	144	148	4	2	0.00
VKRC0141	148	152	4	1	0.00
VKRC0141	152	156	4	<5	<0.005
VKRC0141	156	160	4	2	0.00
VKRC0142	0	4	4	2	0.00
VKRC0142	4	8	4	4	0.00
VKRC0142	8	12	4	2	0.00
VKRC0142	12	16	4	2	0.00
VKRC0142	16	20	4	4	0.00
VKRC0142	20	24	4	4	0.00
VKRC0142	24	28	4	4	0.00
VKRC0142	28	32	4	7	0.01
VKRC0142	32	36	4	4	0.00
VKRC0142	36	40	4	2	0.00
VKRC0142	40	44	4	2	0.00
VKRC0142	44	48	4	2	0.00
VKRC0142	48	52	4	1	0.00
VKRC0142	52	56	4	2	0.00
VKRC0142	56	60	4	<5	<0.005
VKRC0142	60	64	4	2	0.00
VKRC0142	64	68	4	2	0.00
VKRC0142	68	69	1	1	0.00
VKRC0142	69	70	1	1	0.00
VKRC0142	70	71	1	1	0.00
VKRC0142	71	72	1	2	0.00
VKRC0142	72	73	1	2	0.00
VKRC0142	73	74	1	1	0.00
VKRC0142	74	75	1	4	0.00
VKRC0142	75	76	1	1	0.00
VKRC0142	76	77	1	3	0.00
VKRC0142	77	78	1	2	0.00
VKRC0142	78	79	1	2	0.00
VKRC0142	79	80	1	5	0.01
VKRC0142	80	81	1	12	0.01
VKRC0142	81	82	1	4	0.00
VKRC0142	82	83	1	1	0.00
VKRC0142	83	84	1	3	0.00
VKRC0142	84	88	4	3	0.00
VKRC0142	88	89	1	1	0.00
VKRC0142	89	90	1	16	0.02
VKRC0142	90	91	1	5	0.01
VKRC0142	91	92	1	4	0.00
VKRC0142	92	93	1	2	0.00
VKRC0142	93	94	1	4	0.00
VKRC0142	94	95	1	<5	<0.005
VKRC0142	95	96	1	1	0.00
VKRC0142	96	100	4	<5	<0.005
VKRC0142	100	101	1	1	0.00
VKRC0142	101	102	1	1	0.00
VKRC0142	102	103	1	<5	<0.005
VKRC0142	103	104	1	4	0.00
VKRC0142	108	109	1	<5	<0.005
VKRC0142	109	110	1	<5	<0.005
VKRC0142	110	111	1	37	0.04
VKRC0142	111	112	1	85	0.09
VKRC0142	112	113	1	5	0.01
VKRC0142	113	114	1	6	0.01
VKRC0142	114	115	1	2	0.00
VKRC0142	115	116	1	7	0.01
VKRC0142	116	117	1	61	0.06
VKRC0142	117	118	1	5	0.01

Hole ID	Depth From (m)	Depth To (m)	Length (m)	Au ppb	Au g/t
VKRC0142	93	94	1	2	0.00
VKRC0142	94	95	1	2	0.00
VKRC0142	95	96	1	<5	<0.005
VKRC0142	96	97	1	1	0.00
VKRC0142	97	98	1	4	0.00
VKRC0142	98	99	1	6	0.01
VKRC0142	99	100	1	1	0.00
VKRC0142	100	101	1	1	0.00
VKRC0142	101	102	1	17	0.02
VKRC0142	102	103	1	2	0.00
VKRC0142	103	104	1	2	0.00
VKRC0142	104	105	1	2	0.00
VKRC0142	105	106	1	1	0.00
VKRC0142	106	107	1	9	0.01
VKRC0142	107	108	1	10	0.01
VKRC0142	108	112	4	6	0.01
VKRC0142	112	113	1	2	0.00
VKRC0142	113	114	1	10	0.01
VKRC0142	114	115	1	11	0.01
VKRC0142	115	116	1	42	0.04
VKRC0142	116	120	4	45	0.05
VKRC0143	0	4	4	3	0.00
VKRC0143	4	8	4	3	0.00
VKRC0143	8	12	4	1	0.00
VKRC0143	12	16	4	2	0.00
VKRC0143	16	20	4	4	0.00
VKRC0143	20	24	4	2	0.00
VKRC0143	24	28	4	3	0.00
VKRC0143	28	32	4	6	0.01
VKRC0143	32	36	4	18	0.02
VKRC0143	36	40	4	8	0.01
VKRC0143	40	41	1	7	0.01
VKRC0143	41	42	1	22	0.02
VKRC0143	42	43	1	11	0.01
VKRC0143	43	44	1	1	0.00
VKRC0143	44	45	1	3	0.00
VKRC0143	45	46	1	1	0.00
VKRC0143	46	47	1	<5	<0.005
VKRC0143	47	48	1	2	0.00
VKRC0143	48	49	1	<5	<0.005
VKRC0143	49	50	1	<5	<0.005
VKRC0143	50	51	1	3	0.00
VKRC0143	51	52	1	4	0.00
VKRC0143	52	53	1	4	0.00
VKRC0143	53	54	1	2	0.00
VKRC0143	54	55	1	11	0.01
VKRC0143	55	56	1	5	0.01
VKRC0143	56	57	1	8	0.01
VKRC0143	57	58	1	8	0.01
VKRC0143	58	59	1	1	0.00
VKRC0143	59	60	1	4	0.00
VKRC0143	60	61	1	1	0.00
VKRC0143	61	62	1	<5	<0.005
VKRC0143	62	63	1	17	0.02
VKRC0143	63	64	1	2	0.00
VKRC0143	64	65	1	2	0.00
VKRC0143	65	66	1	1	0.00
VKRC0143	66	67	1	16	0.02
VKRC0143	67	68	1	22	0.02
VKRC0143	68	69	1	5	0.01
VKRC0143	69	70	1	3	0.00
VKRC0143	70	71	1	5	0.01
VKRC0143	71	72	1	2	0.00
VKRC0143	72	73	1	3	0.00
VKRC0143	73	74	1	3	0.00
VKRC0143	74	75	1	2	0.00
VKRC0143	75	76	1	4	0.00
VKRC0143	76	77	1	5	0.01
VKRC0143	77	78	1	8	0.01
VKRC0143	78	79	1	2	0.00
VKRC0143	79	80	1	5	0.01
VKRC0143	80	81	1	12	0.01
VKRC0143	81	82	1	4	0.00
VKRC0143	82	83	1	1	0.00
VKRC0143	83	84	1	3	0.00
VKRC0143	84	88	4	3	0.00
VKRC0143	88	89	1	1	0.00
VKRC0143	89	90	1	16	0.02
VKRC0143	90	91	1	5	0.01
VKRC0143	91	92	1	4	0.00
VKRC0143	92	93	1	2	0.00
VKRC0143	93	94	1	4	0.00
VKRC0143	94	95	1	<5	<0.005
VKRC0143	95	96	1	1	0.00
VKRC0143	96	100	4	<5	<0.005
VKRC0143	100	101	1	1	0.00
VKRC0143	101	102	1	1	0.00
VKRC0143	102	103	1	<5	<0.005
VKRC0143	103	104	1	<5	<0.005
VKRC0143	104	108	4	4	0.00
VKRC0143	108	109	1	<5	<0.005
VKRC0143	109	110	1	<5	<0.005
VKRC0143	110	111	1	37	0.04
VKRC0143	111	112	1	85	0.09
VKRC0143	112	113	1	5	0.01
VKRC0143	113	114	1	6	0.01
VKRC0143	114	115	1	2	0.00
VKRC0143	115	116	1	7	0.01
VKRC0143	116	117	1	61	0.06
VKRC0143	117	118	1	5	0.01

Hole ID	Depth From (m)	Depth To (m)	Length (m)	Au ppb	Au g/t
VKRC0143	118	119	1	4	0.00
VKRC0143	119	120	1	3	0.00
VKRC0144	0	4	4	2	0.00
VKRC0144	4	8	4	2	0.00
VKRC0144	8	12	4	1	0.00
VKRC0144	12	16	4	2	0.00
VKRC0144	16	20	4	3	0.00
VKRC0144	20	24	4	4	0.00
VKRC0144	24	28	4	1	



For personal use only

Hole ID	Depth From (m)	Depth To (m)	Length (m)	Au ppb	Au g/t
VKRC0145	68	72	4	14	0.01
VKRC0145	72	73	1	<5	<0.005
VKRC0145	73	74	1	2	0.00
VKRC0145	74	75	1	4	0.00
VKRC0145	75	76	1	4	0.00
VKRC0145	76	77	1	2	0.00
VKRC0145	77	78	1	2	0.00
VKRC0145	78	79	1	9	0.01
VKRC0145	79	80	1	4	0.00
VKRC0145	80	84	4	2	0.00
VKRC0145	84	88	4	2	0.00
VKRC0145	88	92	4	2	0.00
VKRC0145	92	93	1	2	0.00
VKRC0145	93	94	1	3	0.00
VKRC0145	94	95	1	2	0.00
VKRC0145	95	96	1	1	0.00
VKRC0145	96	100	4	32	0.03
VKRC0145	100	101	1	66	0.07
VKRC0145	101	102	1	4	0.00
VKRC0145	102	103	1	3	0.00
VKRC0145	103	104	1	2	0.00
VKRC0145	104	105	1	3	0.00
VKRC0145	105	106	1	3	0.00
VKRC0145	106	107	1	<5	<0.005
VKRC0145	107	108	1	1	0.00
VKRC0145	108	109	1	3	0.00
VKRC0145	109	110	1	10	0.01
VKRC0145	110	111	1	11	0.01
VKRC0145	111	112	1	23	0.02
VKRC0145	112	113	1	6	0.01
VKRC0145	113	114	1	16	0.02
VKRC0145	114	115	1	4	0.00
VKRC0145	115	116	1	8	0.01
VKRC0145	116	117	1	3	0.00
VKRC0145	117	118	1	11	0.01
VKRC0145	118	119	1	13	0.01
VKRC0145	119	120	1	5	0.01
VKRC0145	120	121	1	5	0.01
VKRC0145	121	122	1	3	0.00
VKRC0145	122	123	1	9	0.01
VKRC0145	123	124	1	5	0.01
VKRC0145	124	125	1	8	0.01
VKRC0145	125	126	1	73	0.07
VKRC0145	126	127	1	10	0.01
VKRC0145	127	128	1	4	0.00
VKRC0145	128	129	1	3	0.00
VKRC0145	129	130	1	4	0.00
VKRC0145	130	131	1	2	0.00
VKRC0145	131	132	1	3	0.00
VKRC0146	0	4	4	137	0.14
VKRC0146	4	8	4	48	0.05
VKRC0146	8	12	4	11	0.01
VKRC0146	12	16	4	7	0.01
VKRC0146	16	20	4	24	0.02
VKRC0146	20	24	4	31	0.03
VKRC0146	24	28	4	17	0.02
VKRC0146	28	32	4	9	0.01
VKRC0146	32	33	1	31	0.03
VKRC0146	33	34	1	4	0.00
VKRC0146	34	35	1	2	0.00
VKRC0146	35	36	1	2	0.00
VKRC0146	36	37	1	4	0.00
VKRC0146	37	38	1	2	0.00
VKRC0146	38	39	1	2	0.00
VKRC0146	39	40	1	2	0.00
VKRC0146	40	41	1	3	0.00
VKRC0146	41	42	1	2	0.00
VKRC0146	42	43	1	3	0.00
VKRC0146	43	44	1	10	0.01
VKRC0146	44	45	1	3	0.00
VKRC0146	45	46	1	2	0.00
VKRC0146	46	47	1	<5	<0.005
VKRC0146	47	48	1	<5	<0.005
VKRC0146	48	49	1	<5	<0.005
VKRC0146	49	50	1	<5	<0.005
VKRC0146	50	51	1	1	0.00
VKRC0146	51	52	1	<5	<0.005
VKRC0146	52	53	1	1	0.00
VKRC0146	53	54	1	1	0.00
VKRC0146	54	55	1	<5	<0.005
VKRC0146	55	56	1	<5	<0.005
VKRC0146	56	57	1	<5	<0.005
VKRC0146	57	58	1	<5	<0.005
VKRC0146	58	59	1	<5	<0.005
VKRC0146	59	60	1	<5	<0.005
VKRC0146	60	61	1	<5	<0.005
VKRC0146	61	62	1	<5	<0.005
VKRC0146	62	63	1	<5	<0.005
VKRC0146	63	64	1	<5	<0.005
VKRC0146	64	65	1	<5	<0.005
VKRC0146	65	66	1	1	0.00
VKRC0146	66	67	1	1	0.00
VKRC0146	67	68	1	<5	<0.005
VKRC0146	68	69	1	2	0.00
VKRC0146	69	70	1	1	0.00
VKRC0146	70	71	1	<5	<0.005
VKRC0146	71	72	1	3	0.00
VKRC0146	72	73	1	<5	<0.005
VKRC0146	73	74	1	<5	<0.005
VKRC0146	74	75	1	<5	<0.005

Hole ID	Depth From (m)	Depth To (m)	Length (m)	Au ppb	Au g/t
VKRC0146	75	76	1	<5	<0.005
VKRC0146	76	77	1	<5	<0.005
VKRC0146	77	78	1	1	0.00
VKRC0146	78	79	1	<5	<0.005
VKRC0146	79	80	1	<5	<0.005
VKRC0146	80	81	1	<5	<0.005
VKRC0146	81	82	1	<5	<0.005
VKRC0146	82	83	1	<5	<0.005
VKRC0146	83	84	1	<5	<0.005
VKRC0146	84	85	1	<5	<0.005
VKRC0146	85	86	1	3	0.00
VKRC0146	86	87	1	22	0.02
VKRC0146	87	88	1	22	0.02
VKRC0146	88	89	1	23	0.02
VKRC0146	89	90	1	1	0.00
VKRC0146	90	91	1	<5	<0.005
VKRC0146	91	92	1	<5	<0.005
VKRC0146	92	93	1	<5	<0.005
VKRC0146	93	94	1	<5	<0.005
VKRC0146	94	95	1	<5	<0.005
VKRC0146	95	96	1	<5	<0.005
VKRC0146	96	97	1	1	0.00
VKRC0146	97	98	1	1	0.00
VKRC0146	98	99	1	<5	<0.005
VKRC0146	99	100	1	3	0.00
VKRC0146	100	101	1	4	0.00
VKRC0146	101	102	1	3	0.00
VKRC0146	102	103	1	5	0.01
VKRC0146	103	104	1	3	0.00
VKRC0146	104	105	1	4	0.00
VKRC0146	105	106	1	9	0.01
VKRC0146	106	107	1	6	0.01
VKRC0146	107	108	1	3	0.00
VKRC0146	108	109	1	5	0.01
VKRC0146	109	110	1	11	0.01
VKRC0146	110	111	1	46	0.05
VKRC0146	111	112	1	76	0.08
VKRC0146	112	113	1	348	0.35
VKRC0146	113	114	1	208	0.21
VKRC0146	114	115	1	55	0.06
VKRC0146	115	116	1	11	0.01
VKRC0146	116	117	1	8	0.01
VKRC0146	117	118	1	8	0.01
VKRC0146	118	119	1	5	0.01
VKRC0146	119	120	1	4	0.00
VKRC0146	120	121	1	2	0.00
VKRC0146	121	122	1	1	0.00
VKRC0146	122	123	1	<5	<0.005
VKRC0146	123	124	1	<5	<0.005
VKRC0146	124	125	1	1	0.00
VKRC0146	125	126	1	1	0.00
VKRC0146	126	127	1	<5	<0.005
VKRC0146	127	128	1	<5	<0.005
VKRC0146	128	129	1	2	0.00
VKRC0146	129	130	1	<5	<0.005
VKRC0146	130	131	1	2	0.00
VKRC0146	131	132	1	1	0.00
VKRC0146	132	133	1	5	0.01
VKRC0146	133	134	1	4	0.00
VKRC0146	134	135	1	2	0.00
VKRC0146	135	136	1	1	0.00
VKRC0146	136	137	1	9	0.01
VKRC0146	137	138	1	14	0.01
VKRC0147	0	4	4	6	0.01
VKRC0147	4	8	4	3	0.00
VKRC0147	8	12	4	3	0.00
VKRC0147	12	16	4	5	0.01
VKRC0147	16	20	4	9	0.01
VKRC0147	20	24	4	18	0.02
VKRC0147	24	25	1	14	0.01
VKRC0147	25	26	1	10	0.01
VKRC0147	26	27	1	25	0.03
VKRC0147	27	28	1	20	0.02
VKRC0147	28	32	4	10	0.01
VKRC0147	32	36	4	22	0.02
VKRC0147	36	37	1	4	0.00
VKRC0147	37	38	1	6	0.01
VKRC0147	38	39	1	4	0.00
VKRC0147	39	40	1	3	0.00
VKRC0147	40	41	1	2	0.00
VKRC0147	41	42	1	2	0.00
VKRC0147	42	43	1	1	0.00
VKRC0147	43	44	1	2	0.00
VKRC0147	44	45	1	1	0.00
VKRC0147	45	46	1	<5	<0.005
VKRC0147	46	47	1	<5	<0.005
VKRC0147	47	48	1	<5	<0.005
VKRC0147	48	49	1	<5	<0.005
VKRC0147	49	50	1	<5	<0.005
VKRC0147	50	51	1	<5	<0.005
VKRC0147	51	52	1	<5	<0.005
VKRC0147	52	53	1	<5	<0.005
VKRC0147	53	54	1	<5	<0.005
VKRC0147	54	55	1	<5	<0.005
VKRC0147	55	56	1	<5	<0.005
VKRC0147	56	57	1	1	0.00
VKRC0147	57	58	1	1	0.00
VKRC0147	58	59	1	<5	<0.005
VKRC0147	59	60	1	1	0.00
VKRC0147	60	61	1	2	0.00

Hole ID	Depth From (m)	Depth To (m)	Length (m)	Au ppb	Au g/t
VKRC0147	60	61	1	2	0.00
VKRC0147	61	62	1	1	0.00
VKRC0147	62	63	1	2	0.00
VKRC0147	63	64	1	2	0.00
VKRC0147	64	65	1	2	0.00
VKRC0147	65	66	1	2	0.00
VKRC0147	66	67	1	<5	<0.005
VKRC0147	67	68	1	1	0.00
VKRC0147	68	69	1	2	0.00
VKRC0147	69	70	1	2	0.00
VKRC0147	70	71	1	1	0.00
VKRC0147	71	72	1	1	0.00
VKRC0147	72	73	1	<5	<0.005
VKRC0147	73	74	1	1	0.00
VKRC0148	0	4	4	8	0.01
VKRC0148	4	8	4	3	0.00
VKRC0148	8	12	4	<5	<0.005
VKRC0148	12	16	4	3	0.00
VKRC0148	16	20	4	<5	<0.005
VKRC0148	20	24	4	<5	<0.005
VKRC0148	24	28	4	<5	<0.005
VKRC0148	28	30	2	2	0.00
VKRC0148	0	4	4	<5	<0.005
VKRC0148	4	8	4	<5	<0.005
VKRC0150	8	12	4	2	0.00
VKRC0150	12				



For personal use only

Hole ID	Depth From (m)	Depth To (m)	Length (m)	Au ppb	Au g/t
VKRC0151	21	22	1	<5	<0.005
VKRC0151	22	23	1	4	0.00
VKRC0151	23	24	1	3	0.00
VKRC0151	24	25	1	4	0.00
VKRC0151	25	26	1	8	0.01
VKRC0151	26	27	1	9	0.01
VKRC0151	27	28	1	11	0.01
VKRC0151	28	29	1	25	0.03
VKRC0151	29	30	1	5	0.01
VKRC0151	30	31	1	1	0.00
VKRC0151	31	32	1	5	0.01
VKRC0151	32	33	1	4	0.00
VKRC0151	33	34	1	4	0.00
VKRC0151	34	35	1	3	0.00
VKRC0151	35	36	1	1	0.00
VKRC0151	36	37	1	<5	<0.005
VKRC0151	37	38	1	<5	<0.005
VKRC0151	38	39	1	<5	<0.005
VKRC0151	39	40	1	8	0.01
VKRC0151	40	41	1	24	0.02
VKRC0151	41	42	1	7	0.01
VKRC0151	42	43	1	2	0.00
VKRC0151	43	44	1	4	0.00
VKRC0151	44	45	1	2	0.00
VKRC0151	45	46	1	10	0.01
VKRC0151	46	47	1	7	0.01
VKRC0151	47	48	1	4	0.00
VKRC0151	48	49	1	<5	<0.005
VKRC0151	49	50	1	11	0.01
VKRC0151	50	51	1	57	0.06
VKRC0151	51	52	1	5	0.01
VKRC0151	52	53	1	14	0.01
VKRC0151	53	54	1	3	0.00
VKRC0151	54	55	1	2	0.00
VKRC0151	55	56	1	17	0.02
VKRC0151	56	57	1	32	0.03
VKRC0151	57	58	1	28	0.03
VKRC0151	58	59	1	4	0.00
VKRC0151	59	60	1	3	0.00
VKRC0151	60	64	4	2	0.00
VKRC0151	64	68	4	<5	<0.005
VKRC0151	68	72	4	<5	<0.005
VKRC0151	72	73	1	2	0.00
VKRC0151	73	74	1	1	0.00
VKRC0151	74	75	1	3	0.00
VKRC0151	75	76	1	7	0.01
VKRC0151	76	77	1	5	0.01
VKRC0151	77	78	1	6	0.01
VKRC0151	78	79	1	2	0.00
VKRC0151	79	80	1	7	0.01
VKRC0151	80	81	1	2	0.00
VKRC0151	81	82	1	8	0.01
VKRC0151	82	83	1	28	0.03
VKRC0151	83	84	1	11	0.01
VKRC0151	84	85	1	9	0.01
VKRC0151	85	86	1	3	0.00
VKRC0151	86	87	1	4	0.00
VKRC0151	87	88	1	4	0.00
VKRC0151	88	89	1	2	0.00
VKRC0151	89	90	1	1	0.00
VKRC0151	90	91	1	1	0.00
VKRC0151	91	92	1	1	0.00
VKRC0151	92	93	1	3	0.00
VKRC0151	93	94	1	1	0.00
VKRC0151	94	95	1	<5	<0.005
VKRC0151	95	96	1	<5	<0.005
VKRC0151	96	97	1	<5	<0.005
VKRC0151	97	98	1	<5	<0.005
VKRC0151	98	99	1	2	0.00
VKRC0151	99	100	1	2	0.00
VKRC0151	100	101	1	<5	<0.005
VKRC0151	101	102	1	<5	<0.005
VKRC0151	102	103	1	1	0.00
VKRC0151	103	104	1	2	0.00
VKRC0151	104	105	1	4	0.00
VKRC0151	105	106	1	1	0.00
VKRC0151	106	107	1	5	0.01
VKRC0151	107	108	1	2	0.00
VKRC0151	108	109	1	1	0.00
VKRC0151	109	110	1	4	0.00
VKRC0151	110	111	1	2	0.00
VKRC0151	111	112	1	3	0.00
VKRC0151	112	113	1	2	0.00
VKRC0151	113	114	1	<5	<0.005
VKRC0151	114	115	1	<5	<0.005
VKRC0151	115	116	1	1	0.00
VKRC0151	116	117	1	1	0.00
VKRC0151	117	118	1	2	0.00
VKRC0151	118	119	1	2	0.00
VKRC0151	119	120	1	4	0.00
VKRC0152	0	4	4	2	0.00
VKRC0152	4	8	4	1	0.00
VKRC0152	8	12	4	2	0.00
VKRC0152	12	16	4	13	0.01
VKRC0152	16	20	4	20	0.02
VKRC0152	20	21	1	9	0.01
VKRC0152	21	22	1	8	0.01
VKRC0152	22	23	1	12	0.01
VKRC0152	23	24	1	7	0.01
VKRC0152	24	25	1	28	0.03

Hole ID	Depth From (m)	Depth To (m)	Length (m)	Au ppb	Au g/t
VKRC0152	25	26	1	26	0.03
VKRC0152	26	27	1	7	0.01
VKRC0152	27	28	1	6	0.01
VKRC0152	28	29	1	20	0.02
VKRC0152	29	30	1	27	0.03
VKRC0152	30	31	1	44	0.04
VKRC0152	31	32	1	47	0.05
VKRC0152	32	33	1	51	0.05
VKRC0152	33	34	1	39	0.04
VKRC0152	34	35	1	49	0.05
VKRC0152	35	36	1	23	0.02
VKRC0152	36	37	1	14	0.01
VKRC0152	37	38	1	17	0.02
VKRC0152	38	39	1	16	0.02
VKRC0152	39	40	1	25	0.03
VKRC0152	40	41	1	19	0.02
VKRC0152	41	42	1	43	0.04
VKRC0152	42	43	1	12	0.01
VKRC0152	43	44	1	3	0.00
VKRC0152	44	45	1	7	0.01
VKRC0152	45	46	1	4	0.00
VKRC0152	46	47	1	5	0.01
VKRC0152	47	48	1	10	0.01
VKRC0152	48	52	4	3	0.00
VKRC0152	52	53	1	3	0.00
VKRC0152	53	54	1	1	0.00
VKRC0152	54	55	1	4	0.00
VKRC0152	55	56	1	4	0.00
VKRC0152	56	60	4	3	0.00
VKRC0152	60	64	4	2	0.00
VKRC0152	64	68	4	7	0.01
VKRC0152	68	72	4	6	0.01
VKRC0152	72	73	1	3	0.00
VKRC0152	73	74	1	2	0.00
VKRC0152	74	75	1	2	0.00
VKRC0152	75	76	1	1	0.00
VKRC0152	76	77	1	2	0.00
VKRC0152	77	78	1	2	0.00
VKRC0152	78	79	1	1	0.00
VKRC0152	79	80	1	1	0.00
VKRC0152	80	81	1	1	0.00
VKRC0152	81	82	1	4	0.00
VKRC0152	82	83	1	2	0.00
VKRC0152	83	84	1	3	0.00
VKRC0152	84	85	1	3	0.00
VKRC0152	85	86	1	3	0.00
VKRC0152	86	87	1	2	0.00
VKRC0152	87	88	1	3	0.00
VKRC0152	88	89	1	2	0.00
VKRC0152	89	90	1	3	0.00
VKRC0152	90	91	1	2	0.00
VKRC0152	91	92	1	2	0.00
VKRC0152	92	96	4	1	0.00
VKRC0152	96	97	1	1	0.00
VKRC0152	97	98	1	3	0.00
VKRC0152	98	99	1	3	0.00
VKRC0152	99	100	1	3	0.00
VKRC0152	100	104	4	2	0.00
VKRC0152	104	108	4	3	0.00
VKRC0152	108	112	4	6	0.01
VKRC0152	112	116	4	7	0.01
VKRC0152	116	117	1	4	0.00
VKRC0152	117	118	1	5	0.01
VKRC0152	118	119	1	5	0.01
VKRC0152	119	120	1	4	0.00
VKRC0153	0	4	4	12	0.01
VKRC0153	4	5	1	8	0.01
VKRC0153	5	6	1	4	0.00
VKRC0153	6	7	1	3	0.00
VKRC0153	7	8	1	2	0.00
VKRC0153	8	9	1	10	0.01
VKRC0153	9	10	1	12	0.01
VKRC0153	10	11	1	17	0.02
VKRC0153	11	12	1	8	0.01
VKRC0153	12	16	4	7	0.01
VKRC0153	16	20	4	77	0.08
VKRC0153	20	24	4	38	0.04
VKRC0153	24	28	4	6	0.01
VKRC0153	28	32	4	5	0.01
VKRC0153	32	36	4	4	0.00
VKRC0153	36	37	1	3	0.00
VKRC0153	37	38	1	3	0.00
VKRC0153	38	39	1	6	0.01
VKRC0153	39	40	1	3	0.00
VKRC0153	40	41	1	3	0.00
VKRC0153	41	42	1	3	0.00
VKRC0153	42	43	1	3	0.00
VKRC0153	43	44	1	3	0.00
VKRC0153	44	45	1	186	0.19
VKRC0153	45	46	1	16	0.02
VKRC0153	46	47	1	13	0.01
VKRC0153	47	48	1	47	0.05
VKRC0153	48	49	1	200	0.20
VKRC0153	49	50	1	94	0.09
VKRC0153	50	51	1	27	0.03
VKRC0153	51	52	1	10	0.01
VKRC0153	52	53	1	97	0.10
VKRC0153	53	54	1	5	0.01
VKRC0153	54	55	1	144	0.14
VKRC0153	55	56	1	63	0.06

Hole ID	Depth From (m)	Depth To (m)	Length (m)	Au ppb	Au g/t
VKRC0153	56	57	1	10	0.01
VKRC0153	57	58	1	4	0.00
VKRC0153	58	59	1	6	0.01
VKRC0153	59	60	1	2	0.00
VKRC0153	60	61	1	4	0.00
VKRC0153	61	62	1	4	0.00
VKRC0153	62	63	1	3	0.00
VKRC0153	63	64	1	2	0.00
VKRC0153	64	65	1	149	0.15
VKRC0153	65	66	1	300	0.30
VKRC0153	66	67	1	411	0.41
VKRC0153	67	68	1	370	0.37
VKRC0153	68	69	1	232	0.23
VKRC0153	69	70	1	63	0.06
VKRC0153	70	71	1	7	0.01
VKRC0153	71	72	1	4	0.00
VKRC0153	72	73	1	36	0.04
VKRC0153	73	74	1	5	0.01
VKRC0153	74	75	1	14	0.01
VKRC0153	75	76	1	26	0.03
VKRC0153	76	80	4	12	0.01
VKRC0153	80	84	4	12	0.01
VKRC0153	84	88	4	93	0.09
VKRC0153	88	89	1	6	0.01
VKRC0153	89	90	1	6	0.01
VKRC0153	90	91	1	4	0.00
VKRC0153	91	92	1	3	0.00
VKRC0153	92	96	4	3	0.00
VKRC0153	96	100	4	4	0.00
VKRC0153	100	101	1	3	0.00
VKRC0153	101	102	1	2	0.00



For personal use only

Hole ID	Depth From (m)	Depth To (m)	Length (m)	Au ppb	Au g/t
VKRC0154	69	70	1	65	0.07
VKRC0154	70	71	1	22	0.02
VKRC0154	71	72	1	12	0.01
VKRC0154	72	73	1	42	0.04
VKRC0154	73	74	1	17	0.02
VKRC0154	74	75	1	9	0.01
VKRC0154	75	76	1	11	0.01
VKRC0154	76	77	1	12	0.01
VKRC0154	77	78	1	15	0.02
VKRC0154	78	79	1	10	0.01
VKRC0154	79	80	1	9	0.01
VKRC0154	80	81	1	25	0.03
VKRC0154	81	82	1	48	0.05
VKRC0154	82	83	1	33	0.03
VKRC0154	83	84	1	28	0.03
VKRC0154	84	85	1	32	0.03
VKRC0154	85	86	1	22	0.02
VKRC0154	86	87	1	23	0.02
VKRC0154	87	88	1	19	0.02
VKRC0154	88	89	1	22	0.02
VKRC0154	89	90	1	19	0.02
VKRC0154	90	91	1	15	0.02
VKRC0154	91	92	1	18	0.02
VKRC0154	92	93	1	32	0.03
VKRC0154	93	94	1	49	0.05
VKRC0154	94	95	1	79	0.08
VKRC0154	95	96	1	79	0.08
VKRC0154	96	97	1	47	0.05
VKRC0154	97	98	1	39	0.04
VKRC0154	98	99	1	76	0.08
VKRC0154	99	100	1	58	0.06
VKRC0154	100	101	1	45	0.05
VKRC0154	101	102	1	38	0.04
VKRC0154	102	103	1	24	0.02
VKRC0154	103	104	1	18	0.02
VKRC0154	104	105	1	21	0.02
VKRC0154	105	106	1	15	0.02
VKRC0154	106	107	1	11	0.01
VKRC0154	107	108	1	8	0.01
VKRC0154	108	109	1	7	0.01
VKRC0154	109	110	1	6	0.01
VKRC0154	110	111	1	4	0.00
VKRC0154	111	112	1	2	0.00
VKRC0154	112	113	1	2	0.00
VKRC0154	113	114	1	4	0.00
VKRC0154	114	115	1	8	0.01
VKRC0154	115	116	1	8	0.01
VKRC0154	116	117	1	7	0.01
VKRC0154	117	118	1	8	0.01
VKRC0154	118	119	1	11	0.01
VKRC0154	119	120	1	32	0.03
VKRC0155	0	4	4	16	0.02
VKRC0155	4	8	4	3	0.00
VKRC0155	8	12	4	3	0.00
VKRC0155	12	16	4	6	0.01
VKRC0155	16	20	4	49	0.05
VKRC0155	20	24	4	5	0.01
VKRC0155	24	28	4	3	0.00
VKRC0155	28	29	1	4	0.00
VKRC0155	29	30	1	3	0.00
VKRC0155	30	31	1	5	0.01
VKRC0155	31	32	1	4	0.00
VKRC0155	32	33	1	2	0.00
VKRC0155	33	34	1	1	0.00
VKRC0155	34	35	1	1	0.00
VKRC0155	35	36	1	2	0.00
VKRC0155	36	37	1	5	0.01
VKRC0155	37	38	1	425	0.43
VKRC0155	38	39	1	1475	1.48
VKRC0155	39	40	1	45	0.05
VKRC0155	40	41	1	25	0.03
VKRC0155	41	42	1	7	0.01
VKRC0155	42	43	1	16	0.02
VKRC0155	43	44	1	5	0.01
VKRC0155	44	45	1	6	0.01
VKRC0155	45	46	1	11	0.01
VKRC0155	46	47	1	7	0.01
VKRC0155	47	48	1	7	0.01
VKRC0155	48	52	4	8	0.01
VKRC0155	52	56	4	9	0.01
VKRC0155	56	57	1	6	0.01
VKRC0155	57	58	1	5	0.01
VKRC0155	58	59	1	2	0.00
VKRC0155	59	60	1	5	0.01
VKRC0155	60	61	1	5	0.01
VKRC0155	61	62	1	3	0.00
VKRC0155	62	63	1	4	0.00
VKRC0155	63	64	1	7	0.01
VKRC0155	64	68	4	9	0.01
VKRC0155	68	72	4	23	0.02
VKRC0155	72	73	1	382	0.38
VKRC0155	73	74	1	24	0.02
VKRC0155	74	75	1	44	0.04
VKRC0155	75	76	1	37	0.04
VKRC0155	76	77	1	90	0.09
VKRC0155	77	78	1	491	0.49
VKRC0155	78	79	1	61	0.06
VKRC0155	79	80	1	68	0.07
VKRC0155	80	84	4	80	0.08
VKRC0155	84	88	4	18	0.02

Hole ID	Depth From (m)	Depth To (m)	Length (m)	Au ppb	Au g/t
VKRC0155	88	92	4	124	0.12
VKRC0155	92	93	1	38	0.04
VKRC0155	93	94	1	14	0.01
VKRC0155	94	95	1	5	0.01
VKRC0155	95	96	1	6	0.01
VKRC0155	96	100	4	12	0.01
VKRC0155	100	101	1	6	0.01
VKRC0155	101	102	1	4	0.00
VKRC0155	102	103	1	4	0.00
VKRC0155	103	104	1	3	0.00
VKRC0155	104	105	1	3	0.00
VKRC0155	105	106	1	3	0.00
VKRC0155	106	107	1	13	0.01
VKRC0155	107	108	1	127	0.13
VKRC0155	108	109	1	3	0.00
VKRC0155	109	110	1	2	0.00
VKRC0155	110	111	1	50	0.05
VKRC0155	111	112	1	19	0.02
VKRC0155	112	116	4	182	0.18
VKRC0155	116	117	1	430	0.43
VKRC0155	117	118	1	184	0.18
VKRC0155	118	119	1	397	0.40
VKRC0155	119	120	1	35	0.04
VKRC0155	120	121	1	12	0.01
VKRC0155	121	122	1	5	0.01
VKRC0155	122	123	1	7	0.01
VKRC0155	123	124	1	3	0.00
VKRC0155	124	125	1	3	0.00
VKRC0155	125	126	1	10	0.01
VKRC0156	0	4	4	14	0.01
VKRC0156	4	8	4	6	0.01
VKRC0156	8	12	4	4	0.00
VKRC0156	12	16	4	4	0.00
VKRC0156	16	20	4	2	0.00
VKRC0156	20	24	4	3	0.00
VKRC0156	24	28	4	10	0.01
VKRC0156	28	32	4	9	0.01
VKRC0156	32	36	4	4	0.00
VKRC0156	36	40	4	4	0.00
VKRC0156	40	41	1	5	0.01
VKRC0156	41	42	1	4	0.00
VKRC0156	42	43	1	6	0.01
VKRC0156	43	44	1	4	0.00
VKRC0156	44	48	4	5	0.01
VKRC0156	48	52	4	20	0.02
VKRC0156	52	53	1	30	0.03
VKRC0156	53	54	1	24	0.02
VKRC0156	54	55	1	21	0.02
VKRC0156	55	56	1	22	0.02
VKRC0156	56	57	1	13	0.01
VKRC0156	57	58	1	10	0.01
VKRC0156	58	59	1	8	0.01
VKRC0156	59	60	1	4	0.00
VKRC0156	60	61	1	14	0.01
VKRC0156	61	62	1	10	0.01
VKRC0156	62	63	1	12	0.01
VKRC0156	63	64	1	16	0.02
VKRC0156	64	65	1	21	0.02
VKRC0156	65	66	1	5	0.01
VKRC0156	66	67	1	10	0.01
VKRC0156	67	68	1	17	0.02
VKRC0156	68	69	1	14	0.01
VKRC0156	69	70	1	14	0.01
VKRC0156	70	71	1	14	0.01
VKRC0156	71	72	1	9	0.01
VKRC0156	72	73	1	11	0.01
VKRC0156	73	74	1	12	0.01
VKRC0156	74	75	1	4	0.00
VKRC0156	75	76	1	5	0.01
VKRC0156	76	77	1	6	0.01
VKRC0156	77	78	1	12	0.01
VKRC0156	78	79	1	4	0.00
VKRC0156	79	80	1	4	0.00
VKRC0156	80	81	1	5	0.01
VKRC0156	81	82	1	3	0.00
VKRC0156	82	83	1	8	0.01
VKRC0156	83	84	1	3	0.00
VKRC0156	84	85	1	3	0.00
VKRC0156	85	86	1	2	0.00
VKRC0156	86	87	1	2	0.00
VKRC0156	87	88	1	7	0.01
VKRC0156	88	89	1	2	0.00
VKRC0156	89	90	1	4	0.00
VKRC0156	90	91	1	3	0.00
VKRC0156	91	92	1	3	0.00
VKRC0156	92	93	1	3	0.00
VKRC0156	93	94	1	2	0.00
VKRC0156	94	95	1	6	0.01
VKRC0156	95	96	1	7	0.01
VKRC0156	96	97	1	3	0.00
VKRC0156	97	98	1	2	0.00
VKRC0156	98	99	1	2	0.00
VKRC0156	99	100	1	2	0.00
VKRC0156	100	101	1	3	0.00
VKRC0156	101	102	1	3	0.00
VKRC0156	102	103	1	3	0.00
VKRC0156	103	104	1	3	0.00
VKRC0156	104	105	1	3	0.00
VKRC0156	105	106	1	3	0.00
VKRC0156	106	107	1	4	0.00

Hole ID	Depth From (m)	Depth To (m)	Length (m)	Au ppb	Au g/t
VKRC0156	107	108	1	2	0.00
VKRC0156	108	109	1	33	0.03
VKRC0156	109	110	1	4	0.00
VKRC0156	110	111	1	3	0.00
VKRC0156	111	112	1	3	0.00
VKRC0156	112	113	1	4	0.00
VKRC0156	113	114	1	5	0.01
VKRC0156	114	115	1	7	0.01
VKRC0156	115	116	1	7	0.01
VKRC0156	116	117	1	7	0.01
VKRC0156	117	118	1	4	0.00
VKRC0156	118	119	1	7	0.01
VKRC0156	119	120	1	4	0.00
VKRC0157	0	4	4	22	0.02
VKRC0157	4	8	4	6	0.01
VKRC0157	8	12	4	2	0.00
VKRC0157	12	16	4	1	0.00
VKRC0157	16	20	4	1	0.00
VKRC0157	20	24	4	<5	<0.005
VKRC0157	24	28	4	1	0.00
VKRC0157	28	32	4	2	0.00
VKRC0157	32	36	4	2	0.00
VKRC0157	36	40	4	2	0.00
VKRC0157	40	44	4	1	0.00
VKRC0157	44	48	4	3	0.00
VKRC0157	48	52	4	4	0.00
VKRC0157	52	56	4	4	0.00
VKRC0157	56	60	4	2	0.00
VKRC0157	60	64	4	3	0.00
VKRC0157	64	68	4	2	0.00
VKRC0157	6				



For personal use only

Hole ID	Depth From (m)	Depth To (m)	Length (m)	Au ppb	Au g/t
VKRC0158	84	88	4	<5	<0.005
VKRC0158	88	92	4	<5	<0.005
VKRC0158	92	96	4	<5	<0.005
VKRC0158	96	100	4	<5	<0.005
VKRC0158	100	104	4	<5	<0.005
VKRC0158	104	108	4	<5	<0.005
VKRC0158	108	112	4	<5	<0.005
VKRC0158	112	116	4	<5	<0.005
VKRC0158	116	120	4	<5	<0.005
VKRC0158	120	124	4	<5	<0.005
VKRC0158	124	126	2	<5	<0.005
VKRC0160	0	4	4	6	0.01
VKRC0160	4	8	4	<5	<0.005
VKRC0160	8	12	4	<5	<0.005
VKRC0160	12	16	4	<5	<0.005
VKRC0160	16	20	4	1	0.00
VKRC0160	20	24	4	3	0.00
VKRC0160	24	28	4	2	0.00
VKRC0160	28	32	4	3	0.00
VKRC0160	32	36	4	<5	<0.005
VKRC0160	36	37	1	<5	<0.005
VKRC0160	37	38	1	2	0.00
VKRC0160	38	39	1	5	0.01
VKRC0160	39	40	1	<5	<0.005
VKRC0160	40	41	1	<5	<0.005
VKRC0160	41	42	1	18	0.02
VKRC0160	42	43	1	<5	<0.005
VKRC0160	43	44	1	<5	<0.005
VKRC0160	44	45	1	8	0.01
VKRC0160	45	46	1	<5	<0.005
VKRC0160	46	47	1	<5	<0.005
VKRC0160	47	48	1	<5	<0.005
VKRC0160	48	52	4	2	0.00
VKRC0160	52	56	4	<5	<0.005
VKRC0160	56	60	4	3	0.00
VKRC0160	60	61	1	4	0.00
VKRC0160	61	62	1	<5	<0.005
VKRC0160	62	63	1	<5	<0.005
VKRC0160	63	64	1	1	0.00
VKRC0160	64	65	1	<5	<0.005
VKRC0160	65	66	1	1	0.00
VKRC0160	66	67	1	1	0.00
VKRC0160	67	68	1	<5	<0.005
VKRC0160	68	69	1	4	0.00
VKRC0160	69	70	1	3	0.00
VKRC0160	70	71	1	1	0.00
VKRC0160	71	72	1	14	0.01
VKRC0160	72	76	4	23	0.02
VKRC0160	76	80	4	13	0.01
VKRC0160	80	81	1	13	0.01
VKRC0160	81	82	1	8	0.01
VKRC0160	82	83	1	10	0.01
VKRC0160	83	84	1	9	0.01
VKRC0160	84	85	1	14	0.01
VKRC0160	85	86	1	14	0.01
VKRC0160	86	87	1	14	0.01
VKRC0160	87	88	1	8	0.01
VKRC0160	88	89	1	2	0.00
VKRC0160	89	90	1	<5	<0.005
VKRC0160	90	91	1	2	0.00
VKRC0160	91	92	1	4	0.00
VKRC0160	92	93	1	1	0.00
VKRC0160	93	94	1	<5	<0.005
VKRC0160	94	95	1	1	0.00
VKRC0160	95	96	1	<5	<0.005
VKRC0160	96	97	1	<5	<0.005
VKRC0160	97	98	1	<5	<0.005
VKRC0160	98	99	1	2	0.00
VKRC0160	99	100	1	7	0.01
VKRC0160	100	101	1	97	0.10
VKRC0160	101	102	1	9	0.01
VKRC0160	102	103	1	4	0.00
VKRC0160	103	104	1	7	0.01
VKRC0160	104	105	1	40	0.04
VKRC0160	105	106	1	58	0.06
VKRC0160	106	107	1	39	0.04
VKRC0160	107	108	1	6	0.01
VKRC0160	108	109	1	2	0.00
VKRC0160	109	110	1	2	0.00
VKRC0160	110	111	1	2	0.00
VKRC0160	111	112	1	7	0.01
VKRC0160	112	113	1	12	0.01
VKRC0160	113	114	1	5	0.01
VKRC0160	114	115	1	5	0.01
VKRC0160	115	116	1	3	0.00
VKRC0160	116	117	1	2	0.00
VKRC0160	117	118	1	2	0.00
VKRC0160	118	119	1	4	0.00
VKRC0160	119	120	1	<5	<0.005
VKRC0161	0	4	4	6	0.01
VKRC0161	4	8	4	1	0.00
VKRC0161	8	12	4	<5	<0.005
VKRC0161	12	16	4	<5	<0.005
VKRC0161	16	20	4	1	0.00
VKRC0161	20	24	4	<5	<0.005
VKRC0161	24	28	4	2	0.00
VKRC0161	28	32	4	3	0.00
VKRC0161	32	36	4	13	0.01
VKRC0161	36	37	1	<5	<0.005
VKRC0161	37	38	1	<5	<0.005

Hole ID	Depth From (m)	Depth To (m)	Length (m)	Au ppb	Au g/t
VKRC0161	38	39	1	1	0.00
VKRC0161	39	40	1	<5	<0.005
VKRC0161	40	41	1	2	0.00
VKRC0161	41	42	1	1	0.00
VKRC0161	42	43	1	31	0.03
VKRC0161	43	44	1	5	0.01
VKRC0161	44	45	1	2	0.00
VKRC0161	45	46	1	2	0.00
VKRC0161	46	47	1	2	0.00
VKRC0161	47	48	1	<5	<0.005
VKRC0161	48	49	1	2	0.00
VKRC0161	49	50	1	3	0.00
VKRC0161	50	51	1	11	0.01
VKRC0161	51	52	1	11	0.01
VKRC0161	52	53	1	1	0.00
VKRC0161	53	54	1	<5	<0.005
VKRC0161	54	55	1	1	0.00
VKRC0161	55	56	1	<5	<0.005
VKRC0161	56	57	1	<5	<0.005
VKRC0161	57	58	1	<5	<0.005
VKRC0161	58	59	1	<5	<0.005
VKRC0161	59	60	1	1	0.00
VKRC0161	60	61	1	9	0.01
VKRC0161	61	62	1	26	0.03
VKRC0161	62	63	1	34	0.03
VKRC0161	63	64	1	7	0.01
VKRC0161	64	65	1	2	0.00
VKRC0161	65	66	1	2	0.00
VKRC0161	66	67	1	2	0.00
VKRC0161	67	68	1	3	0.00
VKRC0161	68	69	1	3	0.00
VKRC0161	69	70	1	2	0.00
VKRC0161	70	71	1	<5	<0.005
VKRC0161	71	72	1	1	0.00
VKRC0161	72	73	1	1	0.00
VKRC0161	73	74	1	3	0.00
VKRC0161	74	75	1	<5	<0.005
VKRC0161	75	76	1	<5	<0.005
VKRC0161	76	77	1	1	0.00
VKRC0161	77	78	1	1	0.00
VKRC0161	78	79	1	1	0.00
VKRC0161	79	80	1	4	0.00
VKRC0161	80	81	1	3	0.00
VKRC0161	81	82	1	4	0.00
VKRC0161	82	83	1	5	0.01
VKRC0161	83	84	1	4	0.00
VKRC0161	84	88	4	14	0.01
VKRC0161	88	92	4	28	0.03
VKRC0161	92	96	4	42	0.04
VKRC0161	96	100	4	6	0.01
VKRC0161	100	104	4	9	0.01
VKRC0161	104	108	4	2	0.00
VKRC0161	108	112	4	2	0.00
VKRC0161	112	116	4	2	0.00
VKRC0161	116	120	4	1	0.00
VKRC0162	0	4	4	5	0.01
VKRC0162	4	8	4	2	0.00
VKRC0162	8	12	4	<5	<0.005
VKRC0162	12	16	4	2	0.00
VKRC0162	16	20	4	3	0.00
VKRC0162	20	24	4	3	0.00
VKRC0162	24	28	4	6	0.01
VKRC0162	28	32	4	17	0.02
VKRC0162	32	36	4	8	0.01
VKRC0162	36	40	4	2	0.00
VKRC0162	40	44	4	4	0.00
VKRC0162	44	48	4	3	0.00
VKRC0162	48	52	4	2	0.00
VKRC0162	52	56	4	2	0.00
VKRC0162	56	60	4	2	0.00
VKRC0162	60	64	4	2	0.00
VKRC0162	64	65	1	2	0.00
VKRC0162	65	66	1	3	0.00
VKRC0162	66	67	1	2	0.00
VKRC0162	67	68	1	2	0.00
VKRC0162	68	69	1	2	0.00
VKRC0162	69	70	1	2	0.00
VKRC0162	70	71	1	<5	<0.005
VKRC0162	71	72	1	1	0.00
VKRC0162	72	73	1	2	0.00
VKRC0162	73	74	1	<5	<0.005
VKRC0162	74	75	1	3	0.00
VKRC0162	75	76	1	<5	<0.005
VKRC0162	76	77	1	2	0.00
VKRC0162	77	78	1	2	0.00
VKRC0162	78	79	1	2	0.00
VKRC0162	79	80	1	2	0.00
VKRC0162	80	81	1	2	0.00
VKRC0162	81	82	1	<5	<0.005
VKRC0162	82	83	1	<5	<0.005
VKRC0162	83	84	1	1	0.00
VKRC0162	84	85	1	<5	<0.005
VKRC0162	85	86	1	2	0.00
VKRC0162	86	87	1	<5	<0.005
VKRC0162	87	88	1	<5	<0.005
VKRC0162	88	89	1	2	0.00
VKRC0162	89	90	1	1	0.00
VKRC0162	90	91	1	2	0.00
VKRC0162	91	92	1	2	0.00
VKRC0162	92	93	1	<5	<0.005
VKRC0162	93	94	1	<5	<0.005
VKRC0162	94	95	1	<5	<0.005
VKRC0162	95	96	1	<5	<0.005
VKRC0162	96	97	1	1	0.00
VKRC0162	97	98	1	2	0.00
VKRC0162	98	99	1	1	0.00
VKRC0162	99	100	1	1	0.00
VKRC0162	100	101	1	1	0.00
VKRC0162	101	102	1	1	0.00
VKRC0162	102	103	1	<5	<0.005
VKRC0162	103	104	1	1	0.00
VKRC0162	104	105	1	<5	<0.005
VKRC0162	105	106	1	1	0.00
VKRC0162	106	107	1	3	0.00
VKRC0162	107	108	1	1	0.00
VKRC0162	108	109	1	1	0.00
VKRC0162	109	110	1	2	0.00
VKRC0162	110	111	1	1	0.00
VKRC0162	111	112	1	1	0.00
VKRC0162	112	113	1	<5	<0.005
VKRC0162	113	114	1	<5	<0.005
VKRC0162	114	115	1	<5	<0.005
VKRC0162	115	116	1	<5	<0.005
VKRC0162	116	117	1	1	0.00
VKRC0162	117	118	1	1	0.00
VKRC0162	118	119	1	1	0.00
VKRC0162	119	120	1	<5	<0.005
VKRC0164	0	4	4	8	0.01



For personal use only

Hole ID	Depth From (m)	Depth To (m)	Length (m)	Au ppb	Au g/t
VKRC0164	64	68	4	<5	<0.005
VKRC0164	68	72	4	3	0.00
VKRC0164	72	76	4	12	0.01
VKRC0164	76	77	1	15	0.02
VKRC0164	77	78	1	6	0.01
VKRC0164	78	79	1	16	0.02
VKRC0164	79	80	1	10	0.01
VKRC0164	80	81	1	6	0.01
VKRC0164	81	82	1	2	0.00
VKRC0164	82	83	1	3	0.00
VKRC0164	83	84	1	<5	<0.005
VKRC0164	84	85	1	3	0.00
VKRC0164	85	86	1	2	0.00
VKRC0164	86	87	1	1	0.00
VKRC0164	87	88	1	2	0.00
VKRC0164	88	89	1	12	0.01
VKRC0164	89	90	1	5	0.01
VKRC0164	90	91	1	5	0.01
VKRC0164	91	92	1	16	0.02
VKRC0164	92	93	1	15	0.02
VKRC0164	93	94	1	7	0.01
VKRC0164	94	95	1	177	0.18
VKRC0164	95	96	1	12	0.01
VKRC0164	96	97	1	2	0.00
VKRC0164	97	98	1	6	0.01
VKRC0164	98	99	1	7	0.01
VKRC0164	99	100	1	4	0.00
VKRC0164	100	101	1	6	0.01
VKRC0164	101	102	1	6	0.01
VKRC0164	102	103	1	10	0.01
VKRC0164	103	104	1	13	0.01
VKRC0164	104	105	1	26	0.03
VKRC0164	105	106	1	16	0.02
VKRC0164	106	107	1	44	0.04
VKRC0164	107	108	1	22	0.02
VKRC0164	108	109	1	5	0.01
VKRC0164	109	110	1	1	0.00
VKRC0164	110	111	1	1	0.00
VKRC0164	111	112	1	8	0.01
VKRC0164	112	116	4	15	0.02
VKRC0164	116	120	4	2	0.00
VKRC0164	120	124	4	<5	<0.005
VKRC0164	124	126	2	<5	<0.005
VKRC0165	0	4	4	25	0.03
VKRC0165	4	8	4	1	0.00
VKRC0165	8	12	4	1	0.00
VKRC0165	12	16	4	1	0.00
VKRC0165	16	20	4	1	0.00
VKRC0165	20	24	4	<5	<0.005
VKRC0165	24	28	4	<5	<0.005
VKRC0165	28	32	4	<5	<0.005
VKRC0165	32	36	4	<5	<0.005
VKRC0165	36	40	4	2	0.00
VKRC0165	40	44	4	<5	<0.005
VKRC0165	44	48	4	<5	<0.005
VKRC0165	48	52	4	<5	<0.005
VKRC0165	52	56	4	<5	<0.005
VKRC0165	56	60	4	<5	<0.005
VKRC0165	60	64	4	<5	<0.005
VKRC0165	64	68	4	<5	<0.005
VKRC0165	68	72	4	<5	<0.005
VKRC0165	72	76	4	<5	<0.005
VKRC0165	76	80	4	<5	<0.005
VKRC0165	80	84	4	<5	<0.005
VKRC0165	84	88	4	<5	<0.005
VKRC0165	88	92	4	<5	<0.005
VKRC0165	92	96	4	<5	<0.005
VKRC0165	96	100	4	<5	<0.005
VKRC0165	100	104	4	<5	<0.005
VKRC0165	104	108	4	<5	<0.005
VKRC0165	108	112	4	<5	<0.005
VKRC0165	112	116	4	<5	<0.005
VKRC0165	116	120	4	<5	<0.005
VKRC0168	0	4	4	13	0.01
VKRC0168	4	8	4	2	0.00
VKRC0168	8	12	4	<5	<0.005
VKRC0168	12	16	4	1	0.00
VKRC0168	16	20	4	1	0.00
VKRC0168	20	24	4	<5	<0.005
VKRC0168	24	28	4	<5	<0.005
VKRC0168	28	32	4	<5	<0.005
VKRC0168	32	36	4	<5	<0.005
VKRC0168	36	40	4	<5	<0.005
VKRC0168	40	44	4	<5	<0.005
VKRC0168	44	48	4	<5	<0.005
VKRC0168	48	52	4	19	0.02
VKRC0168	52	56	4	13	0.01
VKRC0168	56	60	4	20	0.02
VKRC0168	60	64	4	13	0.01
VKRC0168	64	68	4	12	0.01
VKRC0168	68	72	4	11	0.01
VKRC0168	72	76	4	21	0.02
VKRC0168	76	80	4	15	0.02
VKRC0168	80	84	4	3	0.00
VKRC0168	84	88	4	1	0.00
VKRC0168	88	92	4	3	0.00
VKRC0168	92	96	4	2	0.00
VKRC0168	96	100	4	1	0.00
VKRC0168	100	104	4	3	0.00
VKRC0168	104	108	4	2	0.00

Hole ID	Depth From (m)	Depth To (m)	Length (m)	Au ppb	Au g/t
VKRC0168	108	112	4	2	0.00
VKRC0168	112	113	1	2	0.00
VKRC0168	113	114	1	1	0.00
VKRC0168	114	115	1	1	0.00
VKRC0168	115	116	1	1	0.00
VKRC0168	116	117	1	2	0.00
VKRC0168	117	118	1	<5	<0.005
VKRC0168	118	119	1	1	0.00
VKRC0168	119	120	1	1	0.00
VKRC0169	0	4	4	18	0.02
VKRC0169	4	8	4	3	0.00
VKRC0169	8	12	4	<5	<0.005
VKRC0169	12	16	4	2	0.00
VKRC0169	16	20	4	1	0.00
VKRC0169	20	24	4	<5	<0.005
VKRC0169	24	28	4	<5	<0.005
VKRC0169	28	32	4	<5	<0.005
VKRC0169	32	36	4	<5	<0.005
VKRC0169	36	40	4	1	0.00
VKRC0169	40	44	4	1	0.00
VKRC0169	44	48	4	<5	<0.005
VKRC0169	48	52	4	2	0.00
VKRC0169	52	56	4	<5	<0.005
VKRC0169	56	60	4	<5	<0.005
VKRC0169	60	64	4	1	0.00
VKRC0169	64	68	4	1	0.00
VKRC0169	68	72	4	3	0.00
VKRC0169	72	76	4	5	0.01
VKRC0169	76	80	4	6	0.01
VKRC0169	80	84	4	10	0.01
VKRC0169	84	88	4	5	0.01
VKRC0169	88	89	1	4	0.00
VKRC0169	89	90	1	3	0.00
VKRC0169	90	91	1	1	0.00
VKRC0169	91	92	1	4	0.00
VKRC0169	92	93	1	38	0.04
VKRC0169	93	94	1	17	0.02
VKRC0169	94	95	1	4	0.00
VKRC0169	95	96	1	16	0.02
VKRC0169	96	97	1	31	0.03
VKRC0169	97	98	1	21	0.02
VKRC0169	98	99	1	4	0.00
VKRC0169	99	100	1	2	0.00
VKRC0169	100	101	1	1	0.00
VKRC0169	101	102	1	4	0.00
VKRC0169	102	103	1	1	0.00
VKRC0169	103	104	1	<5	<0.005
VKRC0169	104	105	1	<5	<0.005
VKRC0169	105	106	1	<5	<0.005
VKRC0169	106	107	1	1	0.00
VKRC0169	107	108	1	2	0.00
VKRC0169	108	109	1	5	0.01
VKRC0169	109	110	1	2	0.00
VKRC0169	110	111	1	2	0.00
VKRC0169	111	112	1	2	0.00
VKRC0169	112	113	1	<5	<0.005
VKRC0169	113	114	1	2	0.00
VKRC0169	114	115	1	1	0.00
VKRC0169	115	116	1	2	0.00
VKRC0169	116	117	1	2	0.00
VKRC0169	117	118	1	1	0.00
VKRC0169	118	119	1	<5	<0.005
VKRC0169	119	120	1	1	0.00
VKRC0170	1	4	3	6	0.01
VKRC0170	4	8	4	3	0.00
VKRC0170	8	12	4	2	0.00
VKRC0170	12	16	4	<5	<0.005
VKRC0170	16	20	4	<5	<0.005
VKRC0170	20	24	4	2	0.00
VKRC0170	24	28	4	2	0.00
VKRC0170	28	32	4	<5	<0.005
VKRC0170	32	36	4	1	0.00
VKRC0170	36	40	4	<5	<0.005
VKRC0170	40	44	4	4	0.00
VKRC0170	44	48	4	7	0.01
VKRC0170	48	52	4	1	0.00
VKRC0170	52	56	4	2	0.00
VKRC0170	56	60	4	5	0.01
VKRC0170	60	64	4	<5	<0.005
VKRC0170	64	68	4	<5	<0.005
VKRC0170	68	72	4	1	0.00
VKRC0170	72	73	1	<5	<0.005
VKRC0170	73	74	1	9	0.01
VKRC0170	74	75	1	<5	<0.005
VKRC0170	75	76	1	<5	<0.005
VKRC0170	76	77	1	<5	<0.005
VKRC0170	77	78	1	1	0.00
VKRC0170	78	79	1	<5	<0.005
VKRC0170	79	80	1	<5	<0.005
VKRC0170	80	81	1	2	0.00
VKRC0170	81	82	1	1	0.00
VKRC0170	82	83	1	<5	<0.005
VKRC0170	83	84	1	<5	<0.005
VKRC0170	84	85	1	<5	<0.005
VKRC0170	85	86	1	<5	<0.005
VKRC0170	86	87	1	<5	<0.005
VKRC0170	87	88	1	<5	<0.005
VKRC0170	88	89	1	<5	<0.005
VKRC0170	89	90	1	1	0.00
VKRC0170	90	91	1	<5	<0.005

Hole ID	Depth From (m)	Depth To (m)	Length (m)	Au ppb	Au g/t
VKRC0170	91	92	1	3	0.00
VKRC0170	92	96	4	2	0.00
VKRC0170	96	100	4	<5	<0.005
VKRC0170	100	101	1	1	0.00
VKRC0170	101	102	1	<5	<0.005
VKRC0170	102	103	1	<5	<0.005
VKRC0170	103	104	1	<5	<0.005
VKRC0170	104	105	1	<5	<0.005
VKRC0170	105	106	1	1	0.00
VKRC0170	106	107	1	<5	<0.005
VKRC0170	107	108	1	<5	<0.005
VKRC0170	108	109	1	<5	<0.005
VKRC0170	109	110	1	4	0.00
VKRC0170	110	111	1	<5	<0.005
VKRC0170	111	112	1	<5	<0.005
VKRC0170	112	113	1	<5	<0.005
VKRC0170	113	114	1	1	0.00
VKRC0170	114	115	1	<5	<0.005
VKRC0170	115	116	1	2	0.00
VKRC0170	116	117	1	4	0.00
VKRC0170	117	118	1	2	0.00
VKRC0170	118	119	1	<5	<0.005
VKRC0170	119	120	1	<5	<0.005
VKRC0170	120				



For personal use only

Hole ID	Depth From (m)	Depth To (m)	Length (m)	Au ppb	Au g/t
VKRC0171	107	108	1	48	0.05
VKRC0171	108	109	1	48	0.05
VKRC0171	109	110	1	48	0.05
VKRC0171	110	111	1	60	0.06
VKRC0171	111	112	1	13	0.01
VKRC0171	112	113	1	16	0.02
VKRC0171	113	114	1	13	0.01
VKRC0171	114	115	1	168	0.17
VKRC0171	115	116	1	56	0.06
VKRC0171	116	117	1	23	0.02
VKRC0171	117	118	1	14	0.01
VKRC0171	118	119	1	12	0.01
VKRC0171	119	120	1	25	0.03
VKRC0172	0	4	4	12	0.01
VKRC0172	4	8	4	3	0.00
VKRC0172	8	12	4	5	0.01
VKRC0172	12	16	4	3	0.00
VKRC0172	16	20	4	16.3	0.16
VKRC0172	20	24	4	1	0.00
VKRC0172	24	28	4	10	0.01
VKRC0172	28	32	4	2	0.00
VKRC0172	32	36	4	1	0.00
VKRC0172	36	40	4	1	0.00
VKRC0172	40	44	4	4	0.00
VKRC0172	44	48	4	4	0.00
VKRC0172	48	52	4	11	0.01
VKRC0172	52	56	4	2	0.00
VKRC0172	56	60	4	1	0.00
VKRC0172	60	64	4	5	0.01
VKRC0172	64	68	4	10	0.01
VKRC0172	68	69	1	4	0.00
VKRC0172	69	70	1	1	0.00
VKRC0172	70	71	1	2	0.00
VKRC0172	71	72	1	2	0.00
VKRC0172	72	73	1	2	0.00
VKRC0172	73	74	1	2	0.00
VKRC0172	74	75	1	2	0.00
VKRC0172	75	76	1	4	0.00
VKRC0172	76	77	1	2	0.00
VKRC0172	77	78	1	2	0.00
VKRC0172	78	79	1	2	0.00
VKRC0172	79	80	1	2	0.00
VKRC0172	80	81	1	2	0.00
VKRC0172	81	82	1	4	0.00
VKRC0172	82	83	1	2	0.00
VKRC0172	83	84	1	1	0.00
VKRC0172	84	85	1	2	0.00
VKRC0172	85	86	1	2	0.00
VKRC0172	86	87	1	12	0.01
VKRC0172	87	88	1	4	0.00
VKRC0172	88	89	1	<5	<0.005
VKRC0172	89	90	1	2	0.00
VKRC0172	90	91	1	12	0.01
VKRC0172	91	92	1	32	0.03
VKRC0172	92	93	1	6	0.01
VKRC0172	93	94	1	9	0.01
VKRC0172	94	95	1	2	0.00
VKRC0172	95	96	1	22	0.02
VKRC0172	96	97	1	18	0.02
VKRC0172	97	98	1	13	0.01
VKRC0172	98	99	1	4	0.00
VKRC0172	99	100	1	10	0.01
VKRC0172	100	101	1	1	0.00
VKRC0172	101	102	1	1	0.00
VKRC0172	102	103	1	1	0.00
VKRC0172	103	104	1	<5	<0.005
VKRC0172	104	105	1	<5	<0.005
VKRC0172	105	106	1	<5	<0.005
VKRC0172	106	107	1	<5	<0.005
VKRC0172	107	108	1	<5	<0.005
VKRC0172	108	109	1	<5	<0.005
VKRC0172	109	110	1	<5	<0.005
VKRC0172	110	111	1	<5	<0.005
VKRC0172	111	112	1	4	0.00
VKRC0172	112	113	1	<5	<0.005
VKRC0172	113	114	1	1	0.00
VKRC0172	114	115	1	<5	<0.005
VKRC0172	115	116	1	<5	<0.005
VKRC0172	116	117	1	3	0.00
VKRC0172	117	118	1	<5	<0.005
VKRC0172	118	119	1	2	0.00
VKRC0172	119	120	1	2	0.00
VKRC0173	0	4	4	38	0.04
VKRC0173	4	8	4	3	0.00
VKRC0173	8	12	4	3	0.00
VKRC0173	12	16	4	6	0.01
VKRC0173	16	20	4	13	0.01
VKRC0173	20	24	4	93	0.09
VKRC0173	24	28	4	4	0.00
VKRC0173	28	32	4	1	0.00
VKRC0173	32	36	4	2	0.00
VKRC0173	36	40	4	4	0.00
VKRC0173	40	44	4	3	0.00
VKRC0173	44	48	4	6	0.01
VKRC0173	48	52	4	1	0.00
VKRC0173	52	56	4	6	0.01
VKRC0173	56	60	4	2	0.00
VKRC0173	60	64	4	3	0.00
VKRC0173	64	65	1	8	0.01
VKRC0173	65	66	1	31	0.03

Hole ID	Depth From (m)	Depth To (m)	Length (m)	Au ppb	Au g/t
VKRC0173	66	67	1	13	0.01
VKRC0173	67	68	1	3	0.00
VKRC0173	68	69	1	3	0.00
VKRC0173	69	70	1	8	0.01
VKRC0173	70	71	1	4	0.00
VKRC0173	71	72	1	2	0.00
VKRC0173	72	73	1	2	0.00
VKRC0173	73	74	1	6	0.01
VKRC0173	74	75	1	<5	<0.005
VKRC0173	75	76	1	<5	<0.005
VKRC0173	76	77	1	<5	<0.005
VKRC0173	77	78	1	<5	<0.005
VKRC0173	78	79	1	<5	<0.005
VKRC0173	79	80	1	<5	<0.005
VKRC0173	80	81	1	<5	<0.005
VKRC0173	81	82	1	1	0.00
VKRC0173	82	83	1	<5	<0.005
VKRC0173	83	84	1	<5	<0.005
VKRC0173	84	85	1	<5	<0.005
VKRC0173	85	86	1	<5	<0.005
VKRC0173	86	87	1	<5	<0.005
VKRC0173	87	88	1	<5	<0.005
VKRC0173	88	89	1	1	0.00
VKRC0173	89	90	1	<5	<0.005
VKRC0173	90	91	1	<5	<0.005
VKRC0173	91	92	1	<5	<0.005
VKRC0173	92	93	1	<5	<0.005
VKRC0173	93	94	1	2	0.00
VKRC0173	94	95	1	2	0.00
VKRC0173	95	96	1	1	0.00
VKRC0173	96	97	1	2	0.00
VKRC0173	97	98	1	3	0.00
VKRC0173	98	99	1	32	0.03
VKRC0173	99	100	1	5	0.01
VKRC0173	100	101	1	48	0.05
VKRC0173	101	102	1	2	0.00
VKRC0173	102	103	1	1	0.00
VKRC0173	103	104	1	1	0.00
VKRC0173	104	105	1	<5	<0.005
VKRC0173	105	106	1	<5	<0.005
VKRC0173	106	107	1	<5	<0.005
VKRC0173	107	108	1	1	0.00
VKRC0173	108	109	1	<5	<0.005
VKRC0173	109	110	1	<5	<0.005
VKRC0173	110	111	1	<5	<0.005
VKRC0173	111	112	1	1	0.00
VKRC0173	112	113	1	<5	<0.005
VKRC0173	113	114	1	<5	<0.005
VKRC0173	114	115	1	<5	<0.005
VKRC0173	115	116	1	<5	<0.005
VKRC0173	116	117	1	<5	<0.005
VKRC0173	117	118	1	<5	<0.005
VKRC0173	118	119	1	1	0.00
VKRC0173	119	120	1	2	0.00
VKRC0174	0	4	4	48	0.05
VKRC0174	4	8	4	3	0.00
VKRC0174	8	12	4	2	0.00
VKRC0174	12	16	4	5	0.01
VKRC0174	16	17	1	6	0.01
VKRC0174	17	18	1	6	0.01
VKRC0174	18	19	1	10	0.01
VKRC0174	19	20	1	37	0.04
VKRC0174	20	21	1	29	0.03
VKRC0174	21	22	1	54	0.05
VKRC0174	22	23	1	522	0.52
VKRC0174	23	24	1	25	0.03
VKRC0174	24	28	4	217	0.22
VKRC0174	28	32	4	10	0.01
VKRC0174	32	36	4	65	0.07
VKRC0174	36	40	4	17	0.02
VKRC0174	40	44	4	11	0.01
VKRC0174	44	48	4	10	0.01
VKRC0174	48	52	4	4	0.00
VKRC0174	52	53	1	19	0.02
VKRC0174	53	54	1	14	0.01
VKRC0174	54	55	1	27	0.03
VKRC0174	55	56	1	59	0.06
VKRC0174	56	57	1	26	0.03
VKRC0174	57	58	1	9	0.01
VKRC0174	58	59	1	6	0.01
VKRC0174	59	60	1	8	0.01
VKRC0174	60	61	1	2	0.00
VKRC0174	61	62	1	7	0.01
VKRC0174	62	63	1	4	0.00
VKRC0174	63	64	1	10	0.01
VKRC0174	64	65	1	2	0.00
VKRC0174	65	66	1	13	0.01
VKRC0174	66	67	1	8	0.01
VKRC0174	67	68	1	11	0.01
VKRC0174	68	69	1	1	0.00
VKRC0174	69	70	1	<5	<0.005
VKRC0174	70	71	1	<5	<0.005
VKRC0174	71	72	1	<5	<0.005
VKRC0174	72	73	1	<5	<0.005
VKRC0174	73	74	1	3	0.00
VKRC0174	74	75	1	<5	<0.005
VKRC0174	75	76	1	<5	<0.005
VKRC0174	76	77	1	1	0.00
VKRC0174	77	78	1	<5	<0.005
VKRC0174	78	79	1	1	0.00

Hole ID	Depth From (m)	Depth To (m)	Length (m)	Au ppb	Au g/t
VKRC0174	79	80	1	3	0.00
VKRC0174	80	84	4	<5	<0.005
VKRC0174	84	88	4	2	0.00
VKRC0174	88	92	4	<5	<0.005
VKRC0174	92	96	4	<5	<0.005
VKRC0174	96	100	4	<5	<0.005
VKRC0174	100	104	4	<5	<0.005
VKRC0174	104	108	4	<5	<0.005
VKRC0178	0	4	4	4	0.00
VKRC0178	4	8	4	3	0.00
VKRC0178	8	12	4	1	0.00
VKRC0178	12	16	4	<5	<0.005
VKRC0178	16	20	4	<5	<0.005
VKRC0178	20	24	4	1	0.00
VKRC0178	24	28	4	2	0.00
VKRC0178	28	32	4	1	0.00
VKRC0178	32	36	4	2	0.00
VKRC0178	36	40	4	3	0.00
VKRC0178	40	44	4	2	0.00
VKRC0178	44	48	4	8	0.01
VKRC0178	48	49	1	2	0.00
VKRC0178	49	50	1	8	0.01
VKRC0178	50	51	1	310	0.31
VKRC0178	51	52	1	2000	2.00
VKRC0178	52	53	1	719	0.72
VKRC0178	53	54	1	222	0.22



For personal use only

Hole ID	Depth From (m)	Depth To (m)	Length (m)	Au ppb	Au g/t	Hole ID	Depth From (m)	Depth To (m)	Length (m)	Au ppb	Au g/t	Hole ID	Depth From (m)	Depth To (m)	Length (m)	Au ppb	Au g/t	
VKRC0179	107	108	1	47	0.05	VKRC0180	20	24	4	<5	<0.005	VKRC0180	127	128	1	29	0.03	
VKRC0179	108	109	1	17	0.02	VKRC0180	24	28	4	1	0.00	VKRC0180	128	129	1	213	0.21	
VKRC0179	109	110	1	56	0.06	VKRC0180	28	32	4	3	0.00	VKRC0180	129	130	1	33	0.03	
VKRC0179	110	111	1	18	0.02	VKRC0180	32	36	4	4	0.00	VKRC0180	130	131	1	33	0.03	
VKRC0179	111	112	1	<5	<0.005	VKRC0180	36	40	4	4	0.00	VKRC0180	131	132	1	12	0.01	
VKRC0179	112	113	1	7	0.01	VKRC0180	40	44	4	<5	<0.005	VKRC0180	132	133	1	10	0.01	
VKRC0179	113	114	1	17	0.02	VKRC0180	44	48	4	15	0.02	VKRC0180	133	134	1	9	0.01	
VKRC0179	114	115	1	12	0.01	VKRC0180	48	52	4	16	0.02	VKRC0180	134	135	1	6	0.01	
VKRC0179	115	116	1	7	0.01	VKRC0180	52	56	4	7	0.01	VKRC0180	135	136	1	145	0.15	
VKRC0179	116	117	1	13	0.01	VKRC0180	56	60	4	3	0.00	VKRC0180	136	137	1	16	0.02	
VKRC0179	117	118	1	58	0.06	VKRC0180	60	64	4	6	0.01	VKRC0180	137	138	1	11	0.01	
VKRC0179	118	119	1	54	0.05	VKRC0180	64	68	4	3	0.00	VKRC0180	138	139	1	240	0.24	
VKRC0179	119	120	1	17	0.02	VKRC0180	68	72	4	4	0.00	VKRC0180	139	140	1	150	0.15	
VKRC0179	120	121	1	12	0.01	VKRC0180	72	76	4	5	0.01	VKRC0180	140	141	1	233	0.23	
VKRC0179	121	122	1	18	0.02	VKRC0180	76	80	4	20	0.02	VKRC0180	141	142	1	108	0.11	
VKRC0179	122	123	1	13	0.01	VKRC0180	80	84	4	13	0.01	VKRC0180	142	143	1	176	0.18	
VKRC0179	123	124	1	30	0.03	VKRC0180	84	88	4	16	0.02	VKRC0180	143	144	1	33	0.03	
VKRC0179	124	125	1	53	0.05	VKRC0180	88	92	4	9	0.01	VKRC0180	144	145	1	15	0.02	
VKRC0179	125	126	1	17	0.02	VKRC0180	92	96	4	46	0.05	VKRC0180	145	146	1	13	0.01	
VKRC0179	126	127	1	33	0.03	VKRC0180	96	97	1	79	0.08	VKRC0180	146	147	1	12	0.01	
VKRC0179	127	128	1	20	0.02	VKRC0180	97	98	1	57	0.06	VKRC0180	147	148	1	64	0.06	
VKRC0179	128	129	1	79	0.08	VKRC0180	98	99	1	313	0.31	VKRC0180	148	149	1	35	0.04	
VKRC0179	129	130	1	22	0.02	VKRC0180	99	100	1	119	0.12	VKRC0180	149	150	1	6	0.01	
VKRC0179	130	131	1	22	0.02	VKRC0180	100	101	1	548	0.55	VKRC0180	150	151	1	5	0.01	
VKRC0179	131	132	1	24	0.02	VKRC0180	101	102	1	122	0.12	VKRC0180	151	152	1	6	0.01	
VKRC0179	132	133	1	22	0.02	VKRC0180	102	103	1	90	0.09	VKRC0180	152	153	1	6	0.01	
VKRC0179	133	134	1	29	0.03	VKRC0180	103	104	1	80	0.08	VKRC0180	153	154	1	7	0.01	
VKRC0179	134	135	1	14	0.01	VKRC0180	104	105	1	731	0.73	VKRC0180	154	155	1	8	0.01	
VKRC0179	135	136	1	29	0.03	VKRC0180	105	106	1	111	0.11	VKRC0180	155	156	1	14	0.01	
VKRC0179	136	137	1	26	0.03	VKRC0180	106	107	1	52	0.05	VKRC0180	156	157	1	14	0.01	
VKRC0179	137	138	1	17	0.02	VKRC0180	107	108	1	53	0.05	VKRC0180	157	158	1	478	0.48	
VKRC0179	138	139	1	47	0.05	VKRC0180	108	109	1	1493	1.49	VKRC0180	158	159	1	22	0.02	
VKRC0179	139	140	1	41	0.04	VKRC0180	109	110	1	95	0.10	VKRC0180	159	160	1	13	0.01	
VKRC0179	140	141	1	90	0.09	VKRC0180	110	111	1	41	0.04	VKRC0180	160	164	4	8	0.01	
VKRC0179	141	142	1	136	0.14	VKRC0180	111	112	1	223	0.22	VKRC0180	164	168	4	12	0.01	
VKRC0179	142	143	1	52	0.05	VKRC0180	112	113	1	3191	3.19							
VKRC0179	143	144	1	42	0.04	VKRC0180	113	114	1	83	0.08							
VKRC0179	144	145	1	11	0.01	VKRC0180	114	115	1	77	0.08							
VKRC0179	145	146	1	12	0.01	VKRC0180	115	116	1	45	0.05							
VKRC0179	146	147	1	9	0.01	VKRC0180	116	117	1	141	0.14							
VKRC0179	147	148	1	11	0.01	VKRC0180	117	118	1	19	0.02							
VKRC0179	148	152	4	4	0.00	VKRC0180	118	119	1	41	0.04							
VKRC0179	152	156	4	4	0.00	VKRC0180	119	120	1	13	0.01							
VKRC0179	156	160	4	2	0.00	VKRC0180	120	121	1	9	0.01							
VKRC0179	160	162	2	2	0.00	VKRC0180	121	122	1	14	0.01							
VKRC0180	0	4	4	3	0.00	VKRC0180	122	123	1	31	0.03							
VKRC0180	4	8	4	<5	<0.005	VKRC0180	123	124	1	427	0.43							
VKRC0180	8	12	4	<5	<0.005	VKRC0180	124	125	1	1824	1.82							
VKRC0180	12	16	4	<5	<0.005	VKRC0180	125	126	1	45464	45.46							
VKRC0180	16	20	4	<5	<0.005	VKRC0180	126	127	1	48	0.05							



APPENDIX 3 - JORC CODE, 2012 EDITION - TABLE 1

JORC Table 1, Section 1 - Sampling Techniques and Data

Criteria	JORC Code explanation	Commentary
Sampling techniques	<i>Nature and quality of sampling (e.g. cut channels, random chips, or specific specialised industry standard measurement tools appropriate to the minerals under investigation, such as downhole gamma sondes, or handheld XRF instruments, etc.). These examples should not be taken as limiting the broad meaning of sampling.</i>	<u>Viking Mines RC Drilling</u> : RC chip samples are collected at the drill rig during the drilling process. Samples are collected from a cone splitter by placing a calico bag across the cone splitter apertures as well as a bucket under the splitter to collect the remainder of the sample. Samples are collected every metre drilled with the reject being placed on the ground and the calico bag being placed on top. Each of the calico sample bags average approximately 3kg in weight. Where 1m samples are selected, the calico bag is collected in a new individually numbered calico bag. For 2m or 4m composite samples, representative scoops are taken from each of the sample piles being sampled and composited into a numbered calico bag. All samples selected for analysis are delivered for assay at Intertek laboratories in Kalgoorlie analysis.
	<i>Include reference to measures taken to ensure sample representivity and the appropriate calibration of any measurement tools or systems used.</i>	<u>Viking Mines RC Drilling</u> : RC sample recovery is monitored for excessive sample loss and recorded to ensure sample representivity.
	<i>Aspects of the determination of mineralisation that are Material to the Public Report. In cases where 'industry standard' work has been done this would be relatively simple (e.g. 'reverse circulation drilling was used to obtain 1 m samples from which 3 kg was pulverised to produce a 30 g charge for fire assay'). In other cases more explanation may be required, such as where there is coarse gold that has inherent sampling problems. Unusual commodities or mineralisation types (e.g. submarine nodules) may warrant disclosure of detailed information</i>	<u>Viking Mines RC Drilling</u> : RC drilling is used to obtain 1m sample intervals from which the geologist at the rig determines the sample interval to be collected for analysis. 1m samples are collected in areas of interest and either 2m or 4m composite samples are collected using a scoop from the respective sample piles to produce a composite sample for the interval required. On average, approximately 3kg is pulverised by the laboratory to produce a 50g charge for fire assay or 25g sample for Aqua Regia depending on the assay method selected. Assay method is chosen depending on the target being tested and the stage of the drilling. Aqua Regia is used for regional first pass exploration to obtain a 33 multielement suite including gold and fire assay for gold only in areas where higher grades are expected. Any overlimit results from Aqua Regia (>2g/t Au) are re-assayed using fire assay. QAQC samples are inserted as described in the relevant section below to monitor for any bias and ensure representivity.
Drilling techniques	<i>Drill type (e.g. core, reverse circulation, open-hole hammer, rotary air blast, auger, Bangka, sonic, etc.) and details (e.g. core diameter, triple or standard tube, depth of diamond tails, face-sampling bit or other type, whether core is oriented and if so, by what method, etc.).</i>	<u>Viking Mines RC Drilling</u> : Reverse Circulation (RC) drilling is being utilised.
Drill sample recovery	<i>Method of recording and assessing core and chip sample recoveries and results assessed.</i>	<u>Viking Mines RC Drilling</u> : RC drilling recoveries are visually estimated and recorded as part of geological logging and sampling process and is estimated as either Good, Fair, Poor or No sample.
	<i>Measures taken to maximise sample recovery and ensure representative nature of the samples.</i>	<u>Viking Mines RC Drilling</u> : RC drilling sample recovery is monitored to ensure representivity of the samples. High pressure air compressors with auxiliary boosters and compressors are used to ensure good sample recovery from the drillhole. Drilling equipment and procedures are suitable to maximise sample recovery and the representative nature of the samples. Sample weights are recorded by the laboratory and reviewed with feedback given to the drillers to ensure consistent sample weights are produced.
	<i>Whether a relationship exists between sample recovery and grade and whether sample bias may have occurred due to preferential loss/gain of fine/coarse material.</i>	RC drilling used standard drilling equipment and procedures that are suitable to maximise sample recovery and the representative nature of the samples. Insufficient data has been collected to establish if any bias is present due to loss/gain of fine/coarse material.
Logging	<i>Whether core and chip samples have been geologically and geotechnically logged to a level of detail to support appropriate Mineral Resource estimation, mining studies and metallurgical studies.</i>	<u>Viking Mines RC Drilling</u> : Logging of drill cuttings is undertaken as a first pass indication of potential gold and multi-element anomalism. Samples of rock chips from drill cuttings are logged by the geologist in the field, for parameters including, depth, colour, grain size, weathering, lithology, alteration, rock fabric and the presence of minerals potentially related to



Criteria	JORC Code explanation	Commentary
		mineralisation including quartz and sulphides. Geological logging detail is deemed sufficient to support any appropriate future studies. No geotechnical logging is undertaken on the RC chips/drillholes.
	<i>Whether logging is qualitative or quantitative in nature. Core (or costean, channel, etc.) photography.</i>	<u>Viking Mines RC Drilling:</u> Logging of RC chips is qualitative in nature. Photographs are taken of all RC chip trays and sample spoil piles in the field.
	<i>The total length and percentage of the relevant intersections logged.</i>	<u>Viking Mines RC Drilling:</u> 100% of RC drilling is logged.
Subsampling techniques and sample preparation	<i>If core, whether cut or sawn and whether quarter, half or all core taken.</i>	Not applicable.
	<i>If non-core, whether riffled, tube sampled, rotary split, etc. and whether sampled wet or dry.</i>	<u>Viking Mines RC Drilling:</u> All RC samples were collected via a cone splitter to yield predominantly dry sub samples of approximately 3kg from a 1 m downhole sample length. At the laboratory, samples are dried and those <3kg are not split prior to pulverising. If samples are >3kg they are crushed and rotary split at the laboratory to <3kg before being pulverised.
	<i>For all sample types, the nature, quality and appropriateness of the sample preparation technique.</i>	The Competent Person considers the methods and processes as described in previous sections for sample preparation appropriate for this style of mineralisation.
	<i>Quality control procedures adopted for all subsampling stages to maximise representivity of samples.</i>	<u>Viking Mines RC Drilling:</u> Standard laboratory procedures adopted for analysis of samples including laboratory duplicate sample analysis and standards. Duplicate sampling has been applied to the RC drill programme (see details below) to measure repeatability of samples. Standards (1:40 samples) and blanks (1:40 samples) are inserted by Viking Mines into the sampling sequence to both check accuracy and precision of the analytical technique and for any contamination in the analytical process. Results are checked on receipt of assay batches and QAQC reports produced by Viking Mines database manager for checking by the geologist. No issues have been identified with the representivity of the samples.
	<i>Measures taken to ensure that the sampling is representative of the in-situ material collected, including for instance results for field duplicate/second-half sampling.</i>	<u>Viking Mines RC Drilling:</u> Viking Mines collects field duplicates via scoop samples from the RC sample spoil at a ratio of 1:50 samples. This results in a general coverage of 1 to 2 samples per hole drilled in the current programme. Laboratory analysis involved the duplicate analysis of certain samples are part of the routine lab QAQC. No issues have been identified within Viking's field duplicates or the duplicate analysis reported by the laboratory.
	<i>Whether sample sizes are appropriate to the grain size of the material being sampled.</i>	<u>Viking Mines RC Drilling:</u> Sample sizes are considered appropriate to the grain size of the material being sampled given the style of mineralisation being targeted and are industry standard for gold exploration in the Eastern Goldfields.
Quality of assay data and laboratory tests	<i>The nature, quality and appropriateness of the assaying and laboratory procedures used and whether the technique is considered partial or total.</i>	<u>Viking Mines RC Drilling:</u> Samples are delivered to Intertek laboratories in Kalgoorlie. Fire Assay method (50g charge) FA50/OEE04 for gold or Aqua Regia (25g charge) AR25/MS33 with 33 elements reported. The analytical technique for gold by fire assay is considered total, and partial for Aqua Regia.
	<i>For geophysical tools, spectrometers, handheld XRF instruments, etc., the parameters used in determining the analysis including instrument make and model, reading times, calibrations factors applied and their derivation, etc.</i>	Not applicable.
	<i>Nature of quality control procedures adopted (e.g. standards, blanks, duplicates, external laboratory checks) and whether acceptable levels of accuracy (i.e. lack of bias) and precision have been established.</i>	<u>Viking Mines RC Drilling:</u> The QAQC procedures (detailed above) for the RC drilling programme consist of the analyses of certified standards (1:40 - 2.5%), duplicates (1:50 - 2%) and blanks (1:40 - 2.5%). Total QAQC samples consists of 7% of the program. Based on review of the analysis results, no issues have been identified. At times sample transcription errors have been identified and resolved (e.g. samples recorded as blanks when assay confirms is a standard). Based on analysis of standard results, appropriate levels of accuracy and precision have been determined.
Verification of sampling and assaying	<i>The verification of significant intersections by either independent or alternative company personnel.</i>	No independent verification of sampling has been completed.
	<i>The use of twinned holes.</i>	No twin holes have been completed.



Criteria	JORC Code explanation	Commentary
	<i>Documentation of primary data, data entry procedures, data verification, data storage (physical and electronic) protocols.</i>	Viking Mines RC Drilling: Primary data for drill cuttings, including sample number, depth, colour, grain size, weathering, lithology, alteration, rock fabric and the presence of minerals potentially related to mineralisation including quartz and sulphides, are collected in the field and entered into a spreadsheet which is then uploaded into relational (Maxwell Dashed) database. Data is managed using the company's sharepoint system and sample information is recorded into notebooks at the time of sampling.
	<i>Discuss any adjustment to assay data.</i>	No adjustments are made to the data.
Location of data points	<i>Accuracy and quality of surveys used to locate drillholes (collar and downhole surveys), trenches, mine workings and other locations used in Mineral Resource estimation.</i>	Viking Mines RC Drilling: The collar positions have been initially measured using a handheld GPS with an accuracy of +/-5m (z). Upon completion of the drilling programme a differential GPS (accuracy +/- 0.5m) has been used to accurately obtain the collar coordinates. The downhole azimuth and dip are surveyed using an Axis Mining Technology Champ Gyro tool with an accuracy of +/- 1 degree for the azimuth and +/-0.1 degrees for the dip. No MRE is being reported, but the methods being used are deemed suitable for any future MRE estimation.
	<i>Specification of the grid system used.</i>	MGA94 Zone 51S
	<i>Quality and adequacy of topographic control.</i>	Viking Mines RC Drilling: Handheld GPS is adequate for laying out collar locations and initial collar coordinate pickup. Use of DGPS for final collar pick up is adequate.
Data spacing and distribution	<i>Data spacing for reporting of Exploration Results.</i>	Data spacing of regional traverse drillhole collars is approximately 60m (E-W) to provide a heel to toe coverage across the target area. This ensures that the end of each drillhole is located approximately below the collar of the next drillhole on the drill section. Drill section spacing for the Bifrost target ranges from ~810m (northern to north central section) to 1,695m (north central line to south central section) to 1,100m (south central line to southern section). Data spacing between section lines is very large whilst along section lines is sufficient to identify and gold mineralisation. Closer spaced drilling has been conducted along some traverses with some holes being 35m apart. At the Central Duplex Target traverse spacing from N to S is 1,300m, 1,000m and 50m.
	<i>Whether the data spacing and distribution is sufficient to establish the degree of geological and grade continuity appropriate for the Mineral Resource and Ore Reserve estimation procedure(s) and classifications applied.</i>	Not applicable, no mineral resource being reported.
	<i>Whether sample compositing has been applied.</i>	Viking Mines RC Drilling: Sample compositing has occurred during sample collection as described in the previous sections. Sample composites range from no compositing (1m samples), 2m composites and 4m composites. For reporting of results, intersections are length weighted composites as reported with the full original data presented in the appendix to this report or disclosed in previous reports where referenced.
Orientation of data in relation to geological structure	<i>Whether the orientation of sampling achieves unbiased sampling of possible structures and the extent to which this is known, considering the deposit type.</i>	Viking Mines RC Drilling: RC drilling is predominately perpendicular to the strike of the structural trends observed in the magnetic geophysics (270 degree azimuth drilling vs north striking interpreted structures). Dip of drillholes are generally 50 degrees and structures are interpreted to be sub-vertical, mitigating the risk of unbiased sampling. Some holes are drilled at a steeper angle where access requires. Based on the limited amount of data obtained so far, this is deemed the most appropriate orientation for the drilling, however this is limited to the extent known at this time.
	<i>If the relationship between the drilling orientation and the orientation of key mineralised structures is considered to have introduced a sampling bias, this should be assessed and reported if material.</i>	No sampling bias has been considered to have been introduced based on the available data. This will continue to be monitored as further data is collected.
Sample security	<i>The measures taken to ensure sample security.</i>	Viking Mines RC Drilling: Samples derived from the RC drilling are collected and stored by site personnel at a designated lay-down area on site. These samples are transported to Intertek laboratories in Kalgoorlie by site personnel. Samples are packaged in polyweave bags (~5 samples) and cable tied which in turn are packaged in bulka bags which are tied and transported to the laboratory. The laboratory storage area is in a fenced compound.



Criteria	JORC Code explanation	Commentary
Audits or reviews	The results of any audits or reviews of sampling techniques and data.	Viking Mines RC Drilling: No external audits or reviews have yet been undertaken on the sampling data.

JORC 2012 Table 1 Section 2 - Reporting of Exploration Results

Criteria	JORC Code explanation	Commentary																																													
Mineral tenement and land tenure status	Type, reference name/number, location and ownership including agreements or material issues with third parties such as joint ventures, partnerships, overriding royalties, native title interests, historical sites, wilderness or national park and environmental settings.	<p><u>Tenements and location</u> The First Hit Project tenements are located approximately 50 km due west of the town of Menzies, Western Australia on the Menzies (05) 1:250,000 and Riverina 3038 1:100,000 topographic map sheets, and include:</p> <table border="1"> <thead> <tr> <th>Tenement ID</th> <th>Status</th> <th>Holder</th> </tr> </thead> <tbody> <tr> <td>E29/1133</td> <td>LIVE</td> <td>Viking Mines Ltd (100%)</td> </tr> <tr> <td>E30/0529</td> <td>LIVE</td> <td>Viking Mines Ltd (100%)</td> </tr> <tr> <td>P29/2652</td> <td>LIVE</td> <td>Viking Mines Ltd (100%)</td> </tr> <tr> <td>P30/1163</td> <td>LIVE</td> <td>Viking Mines Ltd (100%)</td> </tr> <tr> <td>P30/1164</td> <td>LIVE</td> <td>Viking Mines Ltd (100%)</td> </tr> <tr> <td>M30/0091</td> <td>LIVE</td> <td>Red Dirt Mining Pty Ltd (100%)</td> </tr> <tr> <td>M30/0099</td> <td>LIVE</td> <td>Red Dirt Mining Pty Ltd (100%)</td> </tr> <tr> <td>P30/1137</td> <td>LIVE</td> <td>Red Dirt Mining Pty Ltd (100%)</td> </tr> <tr> <td>P30/1144</td> <td>LIVE</td> <td>Red Dirt Mining Pty Ltd (100%)</td> </tr> <tr> <td>E30/0517</td> <td>LIVE</td> <td>Baudin Resources (100%)</td> </tr> <tr> <td>E30/505</td> <td>LIVE</td> <td>Viking Mines Ltd (95%), Simon Byrne (5%)</td> </tr> <tr> <td>E29/1131</td> <td>LIVE</td> <td>Viking Mines Ltd (100%)</td> </tr> <tr> <td>E30/0570</td> <td>Pending</td> <td>Viking Mines Ltd (100%)</td> </tr> <tr> <td>E30/0571</td> <td>Pending</td> <td>Viking Mines Ltd (100%)</td> </tr> </tbody> </table> <p>Viking Mines has a 5-year exclusive option with Baudin Resources (a wholly owned subsidiary of Encounter Resources) to acquire 100% of the mineral rights over part of tenement E30/517. The option expires in February 2027. Currently, Viking has no ownership of E30/517 but has full control and exclusive rights to explore on the option area.</p> <p><u>Third Party Interests</u> The nickel rights to M30/99 & M30/91 are held by Riverina Resources Limited and Barra Resources Limited. Viking Mines are not aware of any material 3rd party interests or royalties.</p> <p><u>Native Title, Historical sites and Wilderness</u> Archaeological and ethnographic studies were undertaken for M30/99 prior to further development in 2001. These studies involved an examination of the existing ethnographic data base pertaining to the mining area and</p>	Tenement ID	Status	Holder	E29/1133	LIVE	Viking Mines Ltd (100%)	E30/0529	LIVE	Viking Mines Ltd (100%)	P29/2652	LIVE	Viking Mines Ltd (100%)	P30/1163	LIVE	Viking Mines Ltd (100%)	P30/1164	LIVE	Viking Mines Ltd (100%)	M30/0091	LIVE	Red Dirt Mining Pty Ltd (100%)	M30/0099	LIVE	Red Dirt Mining Pty Ltd (100%)	P30/1137	LIVE	Red Dirt Mining Pty Ltd (100%)	P30/1144	LIVE	Red Dirt Mining Pty Ltd (100%)	E30/0517	LIVE	Baudin Resources (100%)	E30/505	LIVE	Viking Mines Ltd (95%), Simon Byrne (5%)	E29/1131	LIVE	Viking Mines Ltd (100%)	E30/0570	Pending	Viking Mines Ltd (100%)	E30/0571	Pending	Viking Mines Ltd (100%)
Tenement ID	Status	Holder																																													
E29/1133	LIVE	Viking Mines Ltd (100%)																																													
E30/0529	LIVE	Viking Mines Ltd (100%)																																													
P29/2652	LIVE	Viking Mines Ltd (100%)																																													
P30/1163	LIVE	Viking Mines Ltd (100%)																																													
P30/1164	LIVE	Viking Mines Ltd (100%)																																													
M30/0091	LIVE	Red Dirt Mining Pty Ltd (100%)																																													
M30/0099	LIVE	Red Dirt Mining Pty Ltd (100%)																																													
P30/1137	LIVE	Red Dirt Mining Pty Ltd (100%)																																													
P30/1144	LIVE	Red Dirt Mining Pty Ltd (100%)																																													
E30/0517	LIVE	Baudin Resources (100%)																																													
E30/505	LIVE	Viking Mines Ltd (95%), Simon Byrne (5%)																																													
E29/1131	LIVE	Viking Mines Ltd (100%)																																													
E30/0570	Pending	Viking Mines Ltd (100%)																																													
E30/0571	Pending	Viking Mines Ltd (100%)																																													



Criteria	JORC Code explanation	Commentary
		<p>an examination of known ethnographic site distribution. The studies concluded that it was unlikely that the developments will impact any sites of Aboriginal significance. This information was submitted to the Department of Aboriginal Affairs.</p> <p>A search of the Department of Aboriginal Affairs (DAA) Heritage Inquiry System indicates there are no registered Aboriginal Heritage Sites identified on any of Viking's tenements.</p> <p>The mining lease was granted prior to the Native Title Act being enforced.</p>
<p>Exploration done by other parties</p>	<p><i>Acknowledgment and appraisal of exploration by other parties.</i></p>	<p>The tenements are held in good standing by Red Dirt Mining Pty Ltd. (a wholly owned subsidiary of Viking Mines Ltd) and Viking Mines Ltd. There are no known impediments to obtaining a licence in the area.</p> <p>The Red Dirt tenements have been actively explored and mined since 1886 with the arrival of prospecting parties during the initial Western Australia gold rush. Arthur and Tom Evans founded the First Hit gold mine in 1938. Tom and Arthur worked the mine until Tom sold his share to Riverina station owner Bill Skathorpe in late 1953. Arthur and Bill worked the mine until Bill's death in 1954. George Vujcich Senior bought the mine from Arthur and Bill's estate in late 1955. George and then his son George operated the mine intermittently over a 40-year period. Barmenco purchased the First Hit tenement from George's daughter in late 1996.</p> <p>Regional exploration activities were undertaken by Western Mining Corporation (WMC) and Consolidated Gold Operations prior to 1996 including geochemical sampling, lag sampling and auger programs. The programs covered the various regolith features with a purpose of defining broad geochemical anomalies.</p> <p>From 1996 to 2002 exploration and development was undertaken by Barra Resources or Barmenco.</p> <p>Barmenco Pty Ltd undertook geochemical soil geochemistry on the northern part of M30/99 between 1995 and 2000. Various combinations of multielement geochemistry were completed historically, ranging from gold-only assays to 42 element geochemistry.</p> <p>The following extract from the Barra Resources mine closure and production report provides an insight to the exploration and discovery of the First Hit deposit:</p> <p>"Barmenco Pty Ltd acquired the First Hit tenement in August 1996, with the objective of exploring for and developing moderate sized high grade gold deposits. Because of Barmenco's mining and exploration activities at Two Boys, Karonie, Jenny Wren, Gordon Sirdar and Bacchus Gift mines the period between August 1996 and June 2000 saw only intermittent work at First Hit. Twenty RC drill holes were completed demonstrating the potential for high-grade underground resources.</p> <p>The First Hit deposit was effectively discovered in June 2000 with drill hole BFH 025 which returned 3 zones of mineralisation including 5m @ 60g/t, 7m @ 9.0g/t and 2m @ 3.7g/t".</p> <p>Barra Resources subsequently completed a 20 m x 25 m drill out to 240 m in depth, combined with a detailed feasibility study, culminating in the commencement of mining operations in August 2001.</p> <p>Barra Resources also completed RC drill programs at three prospects within the First Hit Project leases, referred to as First Hit North, First Hit South and Clarkes Well. Minor gold mineralisation was intersected in a small number of holes, but no further exploration was completed.</p> <p>The leases have since been owned by several companies and private operators without much additional exploration.</p>
<p>Geology</p>	<p><i>Deposit type, geological setting and style of mineralisation</i></p>	<p><u>Regional Geology</u></p> <p>The area of interest lies on the 1:100,000 Riverina geological sheet 3038 (Wyche, 1999). The Mt Ida greenstone belt is a north-striking belt of predominantly metamorphosed (upper greenschist-amphibolite facies) mafic and ultramafic rocks that form the western boundary of the Eastern Goldfields geological terrane. The major structure in this belt is the Mt Ida Fault, a deep mantle tapping crustal suture that trends N-S and dips to the east. It marks the western boundary of the Kalgoorlie Terrane (~2.7 Ga) of the Eastern Goldfields Province against the Barlee Terrane (~3.0 Ga) of the Southern Cross Province to the west. To the east the belt is bounded by the Ballard Fault, a continuation of the strike extensive Zuleika Shear.</p>



Criteria	JORC Code explanation	Commentary
		<p>The Mt Ida belt is widely mineralised, predominantly with discordant vein gold deposits. Associated element anomalism typically includes copper and arsenic but neither have been identified in economic concentrations. There is some nickel sulphide mineralisation associated with the komatiite component of the supracrustal rocks, and the area includes a locally significant beryl deposit sporadically mined for emeralds. In the Riverina area the outcrop position of the Ida Fault is equivocal, and it is best regarded as a corridor of related structures with an axis central to the belt.</p> <p>The Riverina and First Hit Project area dominantly comprises metabasalts and metadolerites of tholeiitic parentage with lesser metagabbros and komatiites. Small post-tectonic granitoids intrude the sequence with locally higher-grade metamorphic conditions. Structurally, the dominant features are north-striking, east-dipping reverse faults and associated anastomosing strain zones. A conjugate set of late brittle structures striking NE and NW is also evident.</p> <p>The mineralisation exploited to date has typically been narrow mesothermal anastomosing veins. These frequently have strike and dip dimensions able to sustain small high-grade mining operations.</p> <p><u>Local Geology</u></p> <p>The local geology of the First Hit Project area comprises north striking ultramafics, komatiites and peridotites with some sediments in the eastern part of the block. To the west there is a metabasalt unit including a prominent gabbro and further west again more peridotite with amphibolite. The general strike trend drifts to the north-northwest then back to north. The sequence includes a small felsic intrusive west of the Emerald workings and a zone of felsic schists within the eastern ultramafics. Felsic intrusives occur in the northwest corner. The local strike fabric trends north then north-northeast.</p> <p>The First Hit mineralisation occurs as a quartz lode varying to 4m in thickness dipping at 70° to the east. The lode is hosted in biotite-carbonate schist within metabasalt and plunges to the south at around 50°. Numerous shafts, prospecting pits and costeans exist on the tenements and recorded production for the First Hit and First Hit North areas in the period 1930-1974 was ~7478 oz Au from 6091 tonnes mined. The First Hit North workings are 130m further to the north-northeast.</p> <p>References: Wyche, S.1(1995). Geology of the Mulline and Riverina 1:100,000 Sheets. Geological Survey of Western Australia Grey, A.R (2002) Annual Technical Reporting, 1 July 2000 to 30 June 2001, E30/193, M30/99, M30/118, P30/869, P30/894, Riverina 1:100,000 Sheet 3038 Barra Resources Limited</p>
<p>Drill hole Information</p>	<p>A summary of all information material to the understanding of the exploration results including a tabulation of the following information for all Material drill holes:</p> <ul style="list-style-type: none"> • easting and northing of the drill hole collar • elevation or RL (Reduced Level - elevation above sea level in metres) of the drill hole collar • dip and azimuth of the hole • down hole length and interception depth • hole length. <p>If the exclusion of this information is justified on the basis that the information is not Material and this exclusion does not detract from the understanding of the report, the Competent Person should clearly explain why this is the case.</p>	<p><u>Viking Mines RC Drilling</u>: A summary of the relevant drillhole information has been included in the body of the report and in the appendices.</p>

Personal use only



Criteria	JORC Code explanation	Commentary
Data aggregation methods	<p>In reporting Exploration Results, weighting averaging techniques, maximum and/or minimum grade truncations (e.g., cutting of high grades) and cut-off grades are usually Material and should be stated. Where aggregate intercepts incorporate short lengths of high-grade results and longer lengths of low grade results, the procedure used for such aggregation should be stated and some typical examples of such aggregations should be shown in detail.</p> <p>The assumptions used for any reporting of metal equivalent values should be clearly stated.</p>	<p><u>Viking Mines RC Drilling</u>: Significant assay results or aggregated intercept reporting have been completed at the cut-off grade stated where the aggregate is reported using length weighted method. No high-grade top-cut has been used.</p>
Relationship between mineralisation widths and intercept lengths	<ul style="list-style-type: none"> • These relationships are particularly important in the reporting of Exploration Results. • If the geometry of the mineralisation with respect to the drill hole angle is known, its nature should be reported. • If it is not known and only the down hole lengths are reported, there should be a clear statement to this effect (eg 'down hole length, true width not known'). 	<p><u>Viking Mines RC Drilling</u>: The drilling programs at targets reported herein are variably oblique to the true width of mineralisation. All drill holes are reported as down hole widths as the true width cannot yet be accurately determined. Mineralisation is interpreted as steep dipping (near vertical), however no along strike information is available due to the lack of drilling.</p>
Diagrams	<p>Appropriate maps and sections (with scales) and tabulations of intercepts should be included for any significant discovery being reported These should include, but not be limited to a plan view of drill hole collar locations and appropriate sectional views</p>	<p>Drill plans, maps and cross sections are provided in the body of the announcement showing the location of all data being reported.</p>
Balanced reporting	<p>Where comprehensive reporting of all Exploration Results is not practicable, representative reporting of both low and high grades and/or widths should be practiced to avoid misleading reporting of Exploration Results.</p>	<p><u>Viking Mines RC Drilling</u>: All drillhole data is reported on the cross sections provided and in the data tables in the appendix.</p>
Other substantive exploration data	<p>Other exploration data, if meaningful and material, should be reported including (but not limited to): geological observations; geophysical survey results; geochemical survey results; bulk samples - size and method of treatment; metallurgical test results; bulk density, groundwater, geotechnical and rock characteristics; potential deleterious or contaminating substances</p>	<p>All appropriate information is included in the report.</p>
Further work	<p>The nature and scale of planned further work (eg tests for lateral extensions or depth extensions or large-scale step-out drilling). Diagrams clearly highlighting the areas of possible extensions, including the main geological interpretations and future drilling areas, provided this information is not commercially sensitive.</p>	<p>Further work is described in the body of the report and includes drill planning, remaining assays from the project, and magnetic geophysics data collection.</p>