

5th May 2025 - ASX Announcement

First results from Dadjan uncover 2.7km-long gold-in-soil anomaly

First-pass rock chip and dump sampling programs at Dadjan have outlined a 2.7km-long gold-in-soil anomaly

Further high-grade gold results from Timbakouna

5,000m of power auger drilling underway

Highlights

Dadjan Gold Project

- Assay results from 207 rock chip and 419 dump samples from the Dadjan Gold Project have outlined a 2.7km-long NNE striking zone of gold anomalism, with better rock chip results including:
 - 3.59 g/t Au (RK10063)
 - 3.3 g/t Au (RK10024)
 - 2.6 g/t Au (RK10026)
 - 1.3 g/t Au (RK10063)
- Power auger drilling now underway (Fig.1) with two rigs working to effectively sample the regolith for follow-up deeper drilling.
- Further assay results pending with expedited lab turnaround times.

Timbakouna Gold Project

- Assay results from 119 rock chips and 159 dump samples from Timbakouna Gold Project have returned encouraging gold rock chip results including:
 - 9.5 g/t Au (RK20009)
 - 2.2 g/t Au (RK20083)
 - 1.2 g.t Au (RK20016)
- Regolith mapping, rock chip and dump sampling continues at Timbakouna with the Company awaiting approval from the Cadastre Minier to commence power auger drilling.

Next Steps

- Auger drilling, rock chip and dump sampling continues at Dadjan with rock chip and dump sampling commenced at Tole.



- Early stage targeting generation continues across the Company's 14 Projects, with three teams working across the SE Siguiri Basin.
- DeSoto is currently one of the larger landholders in the Siguiri Basin with a number of project acquisitions currently being accessed.
- All target generation work guided by the mineral systems approach developed by Chairman Paul Roberts and Non-Executive Director Dr Barry Murphy, which has been deployed successfully across West Africa.



Figure 1 – Power auger drilling underway at the Dadjan Gold Project, located in the Siguiri Basin, Guinea.

Commenting on the new results and commencement of drilling, Managing Director Chris Swallow:

“The Company is completing target generation work across key Projects in the SE Siguiri Basin in Guinea. Led by Exploration Manager Aimé NGanare, three teams are working at the Dadjan, Tole and Timbakouna Gold Projects.

Excitingly, power auger drilling has now commenced at Dadjan, with more than 2.7km of gold strike currently delineated, a comprehensive power auger program should generate further targets for AC/RC drilling. It speaks to the strongly mineralised nature of the Siguiri Basin, that the Company, from a standing start and in less than a month, has been able to uncover a 2.7km-long target, which remains open to the North and with results pending.

The Company continues to work its way methodically through its ground position, running first-pass screening and targeting tools across its 934km² Siguiri Basin portfolio. As well as its existing portfolio, the Company has also identified a number of acquisition targets which it is currently accessing.”



DeSoto Resources Limited (ASX:DES) (“DES” or the “Company”) is pleased to announce exploration results from Dadjan and Timbakouna Gold Projects, located in the Siguiri Basin, Guinea (Figure 2).

DeSoto has three teams completing rock chip, dump and soil sampling programs at Dadjan, Tole and Timbakouna with power auger drilling now underway at Dadjan.

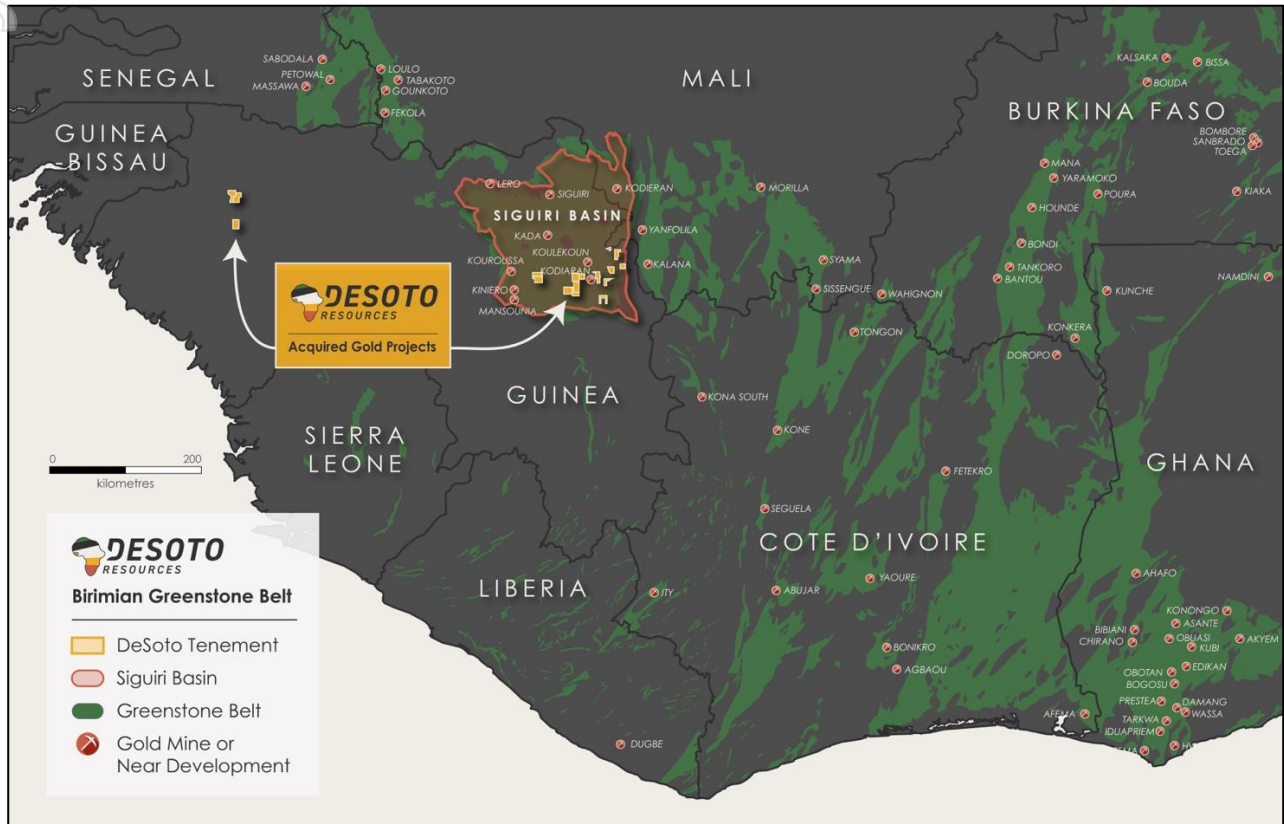


Figure 2: Stylised geological map of the West African Birimian, highlighting the prospective greenstone belts which cover Guinea and the Siguiri Basin.

Siguiri Projects Background

The Company recently acquired the 1,234km² land package comprising 14 prospective gold projects, located in Guinea's Siguiri Basin and 3 gold projects in the Gaoual Gold Belt, Guinea, West Africa (Fig. 3.).

The Company's acquisition has delivered it the 5th biggest land package km² area in the Siguiri Basin with more target areas being screened using the minerals systems approach developed by Chairman Paul Roberts and Non-Executive Director Dr Barry Murphy. This targeting process is ongoing.

The Siguiri Basin is both strongly gold-mineralised and very underexplored. The Company is taking a strategic approach in developing a broad scale structural architecture to support its ongoing ground selection and exploration efforts.

The Siguiri Basin forms part of the Birimian Gold Belt, itself part of the West African Craton. This craton extends across 14 countries in West Africa¹ and its gold endowment is world-class². Gold deposits reflect a large range of orogenic and intrusion-related styles, reflecting the wide range of host rocks – from sediments, mafic intrusions, volcanic rocks to granitoids.

¹Jessell, M. W., Begg, G. C. and Miller, M. S. 2016. The geophysical signatures of the West African Craton. *Precambrian Research* 274, 3-24.

²Markwitz, V. Hein, K. A. A. and Miller, J. 2016. Compilation of West African mineral deposits: Spatial distribution and mineral endowment. *Precambrian Research* 274, 61-81.

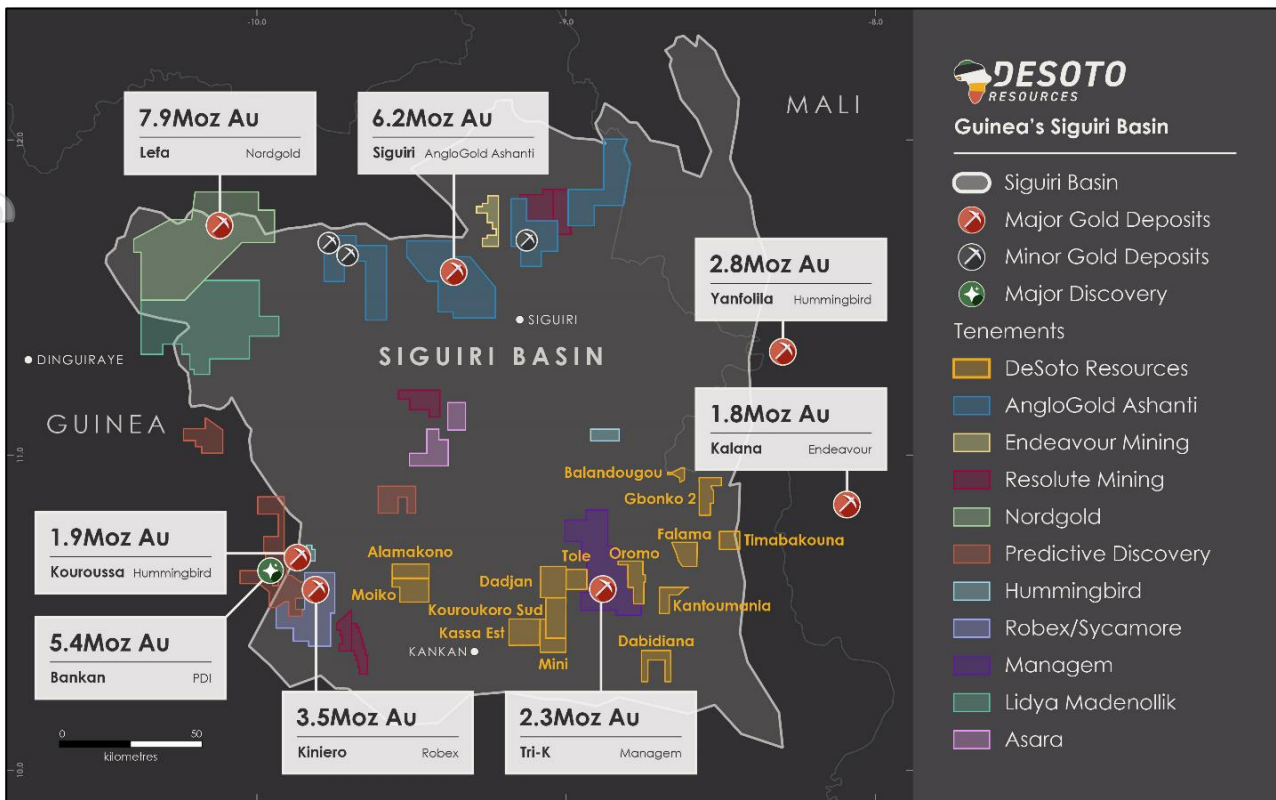


Figure 3: DeSoto's portfolio of Applications, Reconnaissance and Exploration Authorisations, located in the Siguiri Basin, Guinea

Dadjan Results

The Dadjan project as many other areas in the Siguiri basin is underlain by rocks that has undergone extensive and deep chemical weathering. This is demonstrated by widespread thick lateritic regolith profiles observed in the Main zone prospect and the artisanal pits.

The program has identified +2.7km-long zone of elevated gold anomalism (Figure. 4) with power auger drilling now underway to effectively sample the regolith for follow-up deeper drilling. The Company is currently undertaking a comprehensive rock chip and dump sampling program, with 581 samples covering all the gold-anomalous areas in the Main Zone and Grand Plateau Prospects (Figure. 4).

A large number of assays from the current program are currently pending. If the samples are gold mineralised, the potential exists to grow the main zone target to more than 3.5km-long.

Field observations have revealed extensive coverage of the residual-relict regime (residual & erosional) while the depositional regime is mostly made up of proximal-distal colluvium and narrow alluvium cover generally restricted to streambeds and valleys where some outcrops may be present.

Gold mineralisation as indicated by the rock chip and dump sample results is present over a width of between 150 to 250 and strike of 2700m which is still open to the north. Gold mineralisation is hosted within sheet quartz veins, stockwork quartz veins and quartz-hematite breccias suggesting a braided shear zone system.

Dump sampling has been conducted on a regular 100m x 50m grid with east-west trending sampling lines. The dump samples are taken from artisanal working spoils which are extensive within the permit with a 2kg composite sample take. The samples are sieved to -2mm to remove any rock fragments and to sample the soil and clay. Rock chip samples are taken from outcropping in-situ material or from quartz veining evident within the workings. The auger sampling is being conducted on a 100m x 50m grid over the initial



areas of higher gold grades with 2m composite samples being taken. The auger drill holes are generally 10-16m in depth.

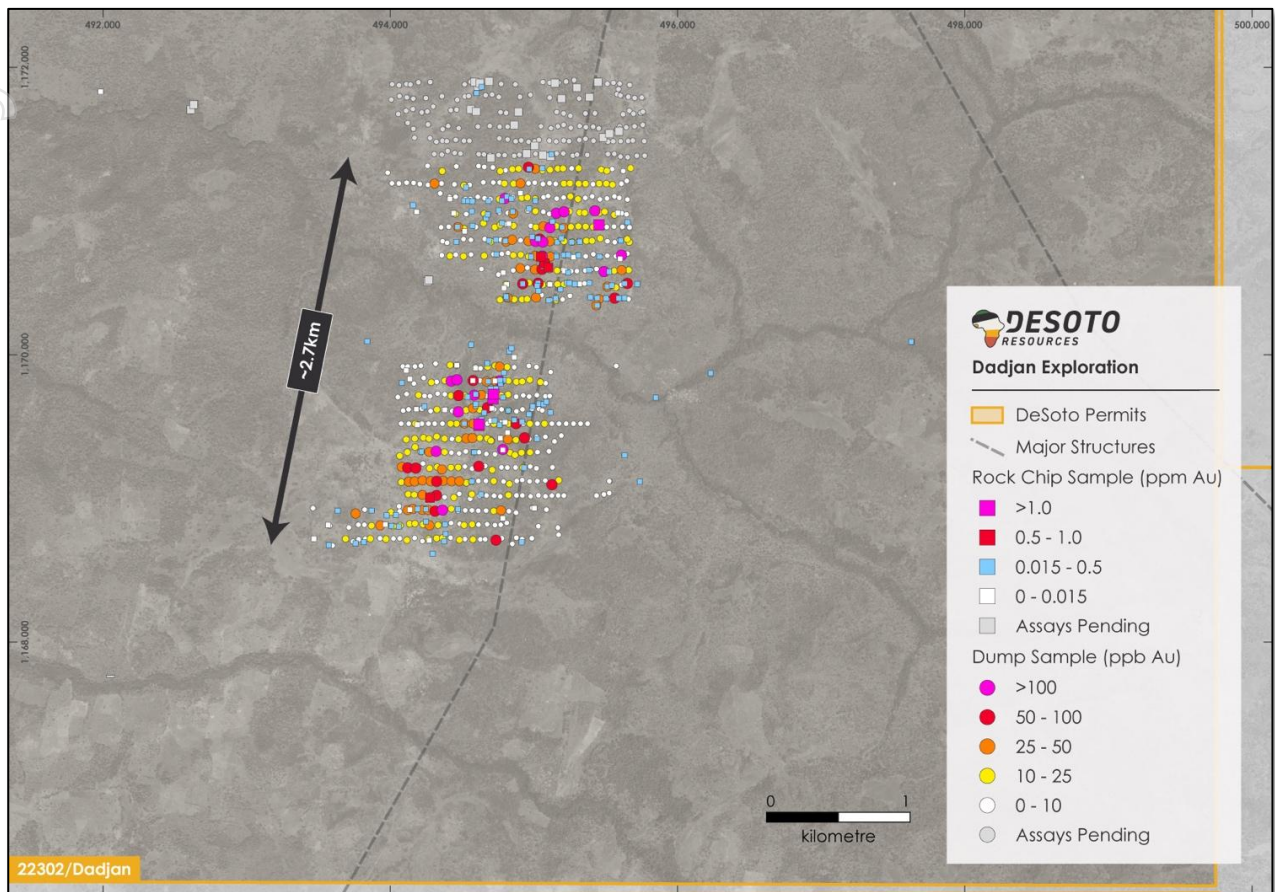


Figure 4 – Dadjan Project with dump and rock chip samples collected across major structures.

A semi-permanent bush camp (see Figure 5) has been constructed at Dadjan which will allow field and drill crews to be based on site for extended periods. DeSoto has employed several local villagers to assist with the sampling program and commissioned the village to construct the camp.



Figure 5 – Low cost and environmentally friendly exploration camp set up at the Dadjan Gold Project.



Timbakouna Results

Timbakouna, as many other areas in the Siguiri basin are underlain by rocks that have undergone extensive and deep chemical weathering.

While the geomorphology is heterogenous in Dadjan, the topography of the Timbakouna permit is relatively homogenous consisting of extensive lateritic plateau and flat valleys with a poor drainage network. This makes Timbakouna less suitable for BLEG stream sediments surveys.

The Company has partially completed a systematic sampling program across artisanal workings and areas of interest (Figure. 6), resulting in the delineation of a number of drill targets to be tested by power auger in the coming weeks. Sampling is currently ongoing and is following the mineralised trends to the south.

The Company is reporting 119 Rock Chip assays, with further results pending.

Wide area of faulting suggested by quartz-hematite breccia hosted in weathered metasediments (siltstones, greywackes and pelites) are also observed with pervasive limonite alteration and finely disseminated sulphides (fresh/oxidised pyrite and arsenopyrite).

At Timbakouna, weathered metasedimentary rocks (pelites, siltstones and greywackes) with dolerite outcrops were observed, with floats of fresh greywacke and granite porphyry also observed in the Project.

Figures. 7-8 below shows an example of dominant rock-types in Timbakouna permit.

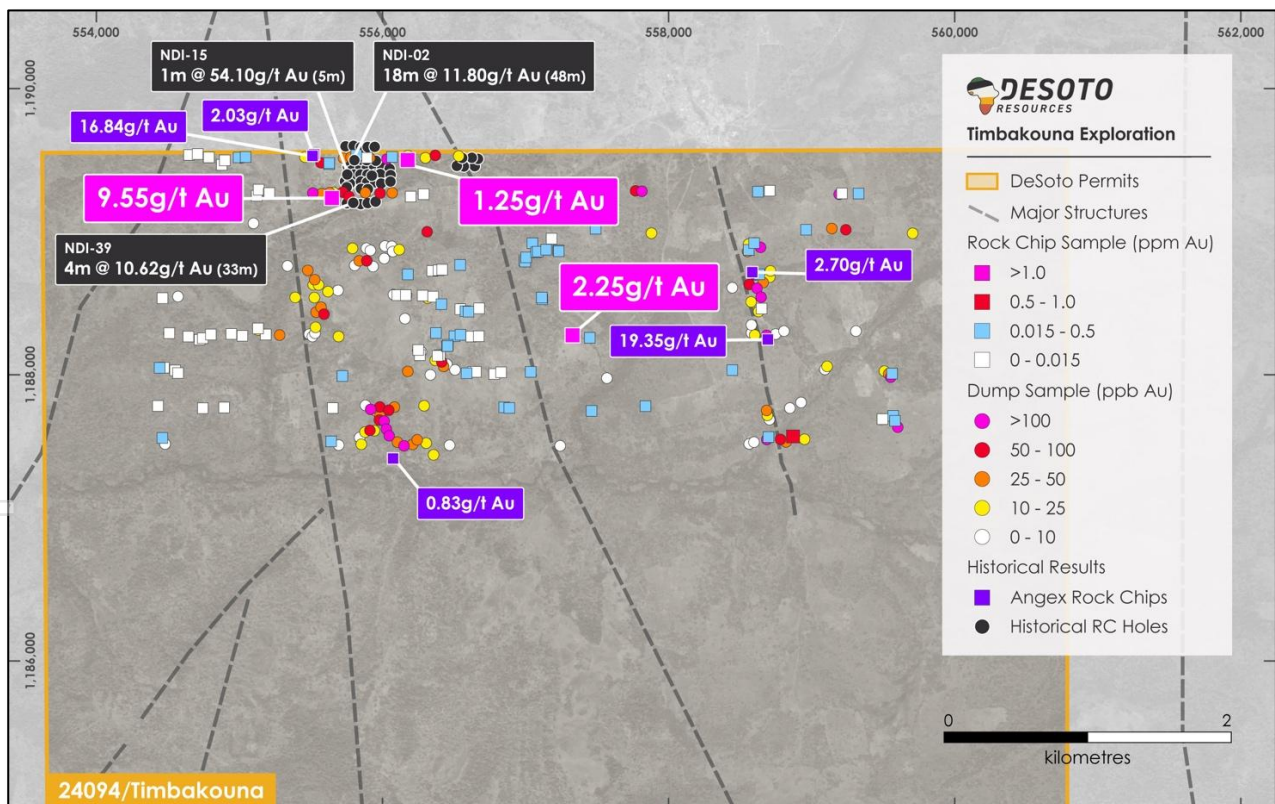


Figure 6: Sampling results and locations from Dadjan, overlain major structures. Previously reported results are also shown.³

³DES ASX Announcement: Desoto acquires high-grade gold projects in Guinea's Siguiri Basin – 20 February 2025



Fig. 7: Photographs of rocks collected/observed at Timbakouna with quartz veined metasedimentary rocks noted over extensive areas



Fig. 8: Rock photographs from Timbakouna. fresh greywacke (left) & granitic porphyry (right)

A full table of results and their locations can be found in Tables 1-4, with the Company expecting a stream of results to continue in the coming weeks.

-END-

This release is authorised by the Board of Directors of DeSoto Resources Limited



For further information visit our website at Desotoresources.com or contact:

Chris Swallow

Managing Director

P: +61 412 174 882

E: cs@desotoresources.com

Table 1. Rock chip assay results from Dadjan Gold Project

Sample ID	East	North	Prospect	Au ppm	As ppm
RK10001	494873	1169517	Main Zone	0.37	13006
RK10002	494870	1169486	Main Zone	0.59	33297
RK10003	494770	1169500	Main Zone	0.01	2818
RK10004	494768	1169500	Main Zone	0.06	4806
RK10005	494442	1169492	Main Zone	0.01	1830
RK10006	495037	1168840	Main Zone	0.01	12369
RK10007	495020	1169400	Main Zone	0.01	585
RK10008	495070	1169438	Main Zone	0.01	1011
RK10009	495275	1169394	Main Zone	0.06	685
RK10010	494470	1169305	Main Zone	0.02	5856
RK10011	494835	1169302	Main Zone	0.01	1260
RK10012	494838	1169301	Main Zone	0.50	12837
RK10013	495037	1169317	Main Zone	0.01	486
RK10014	494434	1169600	Main Zone	0.01	306
RK10015	494632	1169595	Main Zone	0.01	1960
RK10016	494849	1169625	Main Zone	0.49	22604
RK10017	494889	1169529	Main Zone	0.04	52106
RK10018	494907	1169576	Main Zone	0.04	8617
RK10019	494952	1169652	Main Zone	0.01	3041
RK10020	494963	1169698	Main Zone	0.03	2437
RK10021	495075	1169592	Main Zone	0.04	485
RK10022	495368	1169579	Main Zone	0.07	1068
RK10023	494548	1168595	Main Zone	0.02	10460
RK10024	494969	1169674	Main Zone	3.33	13713
RK10025	494969	1169700	Main Zone	0.06	1905
RK10026	494974	1169705	Main Zone	2.60	16968
RK10027	494951	1169742	Main Zone	0.03	1404
RK10028	494848	1169705	Main Zone	0.03	12147
RK10029	494849	1169636	Main Zone	0.24	32283
RK10030	494791	1169686	Main Zone	0.06	5153
RK10031	494960	1169605	Main Zone	0.01	399
RK10032	495038	1169683	Main Zone	0.03	158
RK10033	495185	1169193	Main Zone	0.03	363
RK10034	494334	1169785	Main Zone	0.02	41
RK10035	494390	1169811	Main Zone	0.01	31
RK10036	494828	1169800	Main Zone	0.01	30
RK10037	494935	1169794	Main Zone	0.02	36



RK10038	494983	1169797	Main Zone	0.01	213
RK10039	495042	1169803	Main Zone	0.11	1723
RK10040	494364	1169870	Main Zone	0.01	213
RK10041	494717	1169907	Main Zone	0.01	40
RK10042	494847	1169887	Main Zone	0.01	18
RK10043	494928	1169920	Main Zone	0.04	13
RK10044	494822	1169098	Main Zone	0.03	38
RK10045	494871	1169488	Main Zone	1.28	2677
RK10046	494953	1169520	Main Zone	0.01	216
RK10047	494981	1169522	Main Zone	0.03	86
RK10048	495032	1169506	Main Zone	0.01	34
RK10049	495117	1169529	Main Zone	0.05	31
RK10050	495220	1169565	Main Zone	0.03	46
RK10051	495245	1169619	Main Zone	0.06	197
RK10052	495288	1169638	Main Zone	0.12	142
RK10053	495321	1169635	Main Zone	0.07	47
RK10054	495339	1169653	Main Zone	0.16	44
RK10055	495170	1169513	Main Zone	0.26	44
RK10056	495117	1169526	Main Zone	0.08	22
RK10057	495053	1169510	Main Zone	0.01	14
RK10058	495015	1169491	Main Zone	0.03	12
RK10059	494529	1168984	Main Zone	0.58	693
RK10060	494532	1168992	Main Zone	0.02	110
RK10061	494885	1169008	Main Zone	0.07	67
RK10062	494871	1169497	Main Zone	0.49	1
RK10063	494871	1169497	Main Zone	3.59	1
RK10064	494988	1169744	Main Zone	0.05	43
RK10065	495021	1169778	Main Zone	0.16	16
RK10066	495018	1169802	Main Zone	0.03	1362
RK10067	495044	1169855	Main Zone	0.08	2
RK10068	495116	1169963	Main Zone	0.01	847
RK10069	495081	1170004	Main Zone	0.03	267
RK10070	495081	1170004	Main Zone	0.05	621
RK10071	495097	1170025	Main Zone	0.02	174
RK10072	494815	1170050	Main Zone	0.02	98
RK10073	494492	1169620	Main Zone	0.03	37
RK10074	493888	1168894	Main Zone	0.02	490
RK10075	494123	1168895	Main Zone	0.02	577
RK10076	494228	1168862	Main Zone	0.02	804
RK10077	494292	1168865	Main Zone	0.02	532
RK10078	494390	1168901	Main Zone	0.01	115
RK10079	494443	1168906	Main Zone	0.03	351
RK10080	494500	1168904	Main Zone	0.07	331
RK10081	494724	1168904	Main Zone	0.12	102
RK10082	495256	1168912	Main Zone	0.01	149



RK10083	493821	1168795	Main Zone	0.01	101
RK10084	494219	1168797	Main Zone	0.01	327
RK10085	494261	1168788	Main Zone	0.02	1067
RK10086	494501	1168818	Main Zone	0.02	1140
RK10087	494312	1168785	Main Zone	0.08	753
RK10088	494635	1168798	Main Zone	0.25	26
RK10089	493722	1168698	Main Zone	0.01	38
RK10090	493826	1168654	Main Zone	0.03	197
RK10091	494011	1168668	Main Zone	0.02	199
RK10092	494068	1168675	Main Zone	0.15	325
RK10093	494525	1168688	Main Zone	0.01	519
RK10094	494627	1168681	Main Zone	0.04	110
RK10095	494639	1168732	Main Zone	0.25	25
RK10096	495169	1168674	Main Zone	0.02	191
RK10097	495060	1170373	Main Zone	0.07	714
RK10098	495065	1170374	Main Zone	0.13	1366
RK10099	495062	1170375	Main Zone	0.01	57
RK10100	495375	1171375	Main Zone	0.16	1112
RK10101	495989	1169096	Main Zone	0.02	146
RK10102	495885	1169280	Main Zone	0.02	71
RK10103	495059	1170385	Grand Plateau	0.04	635
RK10104	495285	1170424	Grand Plateau	0.05	186
RK10105	495357	1170358	Grand Plateau	0.02	793
RK10106	495357	1170358	Grand Plateau	0.01	46
RK10107	495405	1170372	Grand Plateau	0.02	1322
RK10108	495405	1170372	Grand Plateau	0.01	197
RK10109	495438	1170435	Grand Plateau	0.02	460
RK10110	495647	1170380	Grand Plateau	0.02	909
RK10111	495694	1170374	Grand Plateau	0.02	1913
RK10112	495694	1170323	Grand Plateau	0.28	332
RK10113	495754	1170372	Grand Plateau	0.12	58
RK10114	495754	1170372	Grand Plateau	0.10	43
RK10115	495883	1170376	Grand Plateau	0.02	103
RK10116	495844	1170373	Grand Plateau	0.02	54
RK10117	495063	1170470	Grand Plateau	0.01	197
RK10118	495046	1170444	Grand Plateau	0.01	69
RK10119	495175	1170474	Grand Plateau	0.02	56
RK10120	495282	1170478	Grand Plateau	0.06	165
RK10121	495276	1170461	Grand Plateau	0.02	115
RK10122	495365	1170469	Grand Plateau	0.01	73
RK10123	495483	1170481	Grand Plateau	0.17	799
RK10124	495500	1170479	Grand Plateau	0.05	542
RK10125	495539	1170472	Grand Plateau	0.03	1879
RK10126	495570	1170472	Grand Plateau	0.01	132
RK10127	495640	1170480	Grand Plateau	0.03	489

For personal use only



RK10128	495765	1170454	Grand Plateau	0.27	4902
RK10129	495795	1170462	Grand Plateau	0.24	555
RK10130	495885	1170475	Grand Plateau	0.02	52
RK10131	495973	1170472	Grand Plateau	0.02	51
RK10132	495039	1170551	Grand Plateau	0.01	510
RK10133	495328	1170616	Grand Plateau	0.51	2952
RK10134	495353	1170587	Grand Plateau	0.65	2285
RK10135	495468	1170563	Grand Plateau	0.01	257
RK10136	495492	1170551	Grand Plateau	0.02	54
RK10137	495637	1170570	Grand Plateau	0.02	57
RK10138	495777	1170559	Grand Plateau	0.03	29
RK10139	494992	1170679	Grand Plateau	0.02	614
RK10140	495234	1170662	Grand Plateau	0.50	4690
RK10141	495302	1170663	Grand Plateau	0.96	2900
RK10142	495411	1170671	Grand Plateau	0.05	1581
RK10143	495317	1170594	Grand Plateau	0.15	687
RK10144	495317	1170594	Grand Plateau	0.11	887
RK10145	495410	1170664	Grand Plateau	0.14	313
RK10146	495461	1170674	Grand Plateau	0.03	86
RK10147	495493	1170675	Grand Plateau	0.05	84
RK10148	495529	1170659	Grand Plateau	0.01	110
RK10149	495563	1170671	Grand Plateau	0.02	52
RK10150	495709	1170663	Grand Plateau	0.03	25
RK10151	494712	1170766	Grand Plateau	0.19	121
RK10152	494941	1170773	Grand Plateau	0.07	145
RK10153	494990	1170779	Grand Plateau	0.05	819
RK10154	495055	1170772	Grand Plateau	0.06	731
RK10155	495241	1170801	Grand Plateau	0.02	59
RK10156	495282	1170788	Grand Plateau	0.08	689
RK10157	495415	1170763	Grand Plateau	0.25	149
RK10158	495445	1170790	Grand Plateau	0.09	128
RK10159	495516	1170763	Grand Plateau	0.04	29
RK10160	495571	1170767	Grand Plateau	0.04	475
RK10161	495857	1170774	Grand Plateau	0.06	341
RK10162	495853	1170647	Grand Plateau	0.01	57
RK10163	494722	1170870	Grand Plateau	0.03	370
RK10164	494771	1170839	Grand Plateau	0.01	13
RK10165	494825	1170877	Grand Plateau	0.02	138
RK10166	494920	1170929	Grand Plateau	0.04	122
RK10167	495031	1170895	Grand Plateau	0.03	96
RK10168	495078	1170892	Grand Plateau	0.01	74
RK10169	495382	1170908	Grand Plateau	0.10	580
RK10170	495449	1170867	Grand Plateau	0.08	1074
RK10171	495706	1170884	Grand Plateau	1.01	466
RK10172	495905	1170902	Grand Plateau	0.02	337



RK10173	494695	1170965	Grand Plateau	0.01	42
RK10174	494820	1170978	Grand Plateau	0.03	122
RK10175	494931	1170956	Grand Plateau	0.07	292
RK10176	495007	1170985	Grand Plateau	0.02	59
RK10177	495105	1170975	Grand Plateau	0.05	110
RK10178	495219	1170997	Grand Plateau	0.02	116
RK10179	495837	1170967	Grand Plateau	0.01	546
RK10180	494093.4	1170073	Grand Plateau	0.03	30
RK10181	492235.9	1171811	Grand Plateau	0.01	497
RK10182	494436.6	1170974	Grand Plateau	0.01	48
RK10183	494412	1171021	Grand Plateau	0.03	78
RK10184	494888.5	1171844	Grand Plateau	0.13	1093
RK10185	494853.1	1171801	Grand Plateau	0.03	311
RK10186	495194	1167034	Grand Plateau	0.06	67
RK10187	494668	1171064	Grand Plateau	0.01	163
RK10188	494769	1171052	Grand Plateau	0.17	858
RK10189	494795	1171050	Grand Plateau	0.02	124
RK10190	494825	1171048	Grand Plateau	0.04	182
RK10191	494936	1171049	Grand Plateau	0.03	406
RK10192	495030	1171051	Grand Plateau	0.03	160
RK10193	495066	1171081	Grand Plateau	0.08	112
RK10194	495097	1171067	Grand Plateau	0.02	110
RK10195	495159	1171105	Grand Plateau	0.01	44
RK10196	495263	1171052	Grand Plateau	0.02	25
RK10197	497883	1170071	Grand Plateau	0.01	16
RK10198	497880	1170071	Grand Plateau	0.02	162
RK10199	494780	1171144	Grand Plateau	0.40	221
RK10200	494780	1171144	Grand Plateau	0.44	654
RK10201	494780	1171144	Grand Plateau	0.04	101
RK10202	494780	1171144	Grand Plateau	0.03	106
RK10203	494780	1171144	Grand Plateau	0.39	1014
RK10204	496101	1169680	Grand Plateau	0.03	154
RK10205	496484	1169852	Grand Plateau	0.02	48
RK10206	495221	1171273	Grand Plateau	0.05	392
RK10207	495311	1171278	Grand Plateau	0.04	609



Table 2. Dump results from Dadjan Gold Project

Sample ID	East	North	Au ppb	As ppb	Comment
DU10001	494873	1169500	37	279,563	
DU10002	494830	1169500	34	119,731	
DU10003	494770	1169500	35	159,671	
DU10004	494715	1169500	18	109,584	
DU10005	494673	1169500	15	147,890	
DU10006	494616	1169500	9	131,052	
DU10007	494563	1169500	5	128,434	
DU10008	494519	1169500	7	194,960	
DU10009	494473	1169500	9	113,496	
DU10010	494427	1169500	11	93,497	
DU10011	494382	1169500	9	85,157	
DU10012	494329	1169500	7	128,173	
DU10013	494930	1169500	7	37,413	
DU10014	494974	1169500	12	22,542	
DU10015	495027	1169500	5	12,567	
DU10016	495077	1169500	14	28,411	
DU10017	495129	1169500	80	17,300	
DU10018	495179	1169500	9	45,984	
DU10019	495225	1169500	11	159,282	
DU10020	495277	1169500	6	85,683	
DU10021	495327	1169500	22	137,501	
DU10022	495378	1169500	6	122,558	
DU10023	495428	1169500	4	88,353	
DU10024	495478	1169500	4	98,718	
DU10025	495529	1169500	5	51,508	
DU10026	495578	1169500	4	95,426	
DU10027	495627	1169500	4	60,982	
DU10028	494364	1169390	14	36,821	
DU10029	494423	1169396	12	81,194	
DU10030	494484	1169402	19	108,987	
DU10031	494523	1169395	22	70,980	
DU10032	494576	1169410	21	95,744	
DU10033	494631	1169396	13	116,055	
DU10034	494683	1169394	7	158,109	
DU10035	494728	1169392	17	247,844	
DU10036	494782	1169397	34	235,529	
DU10037	494825	1169400	25	214,302	
DU10038	494876	1169400	16	134,258	
DU10039	494928	1169397	14	155,003	
DU10040	494963	1169380	7	211,127	
DU10041	495022	1169403	7	192,079	
DU10042	495072	1169391	37	51,638	

For personal use only



For personal use only

DU10043	495128	1169387	11	34,262	
DU10044	495188	1169401	81	120,300	
DU10045	495220	1169394	8	42,958	
DU10046	495271	1169408	7	143,795	
DU10047	495333	1169408	5	140,393	
DU10048	495397	1169376	6	114,802	
DU10049	495444	1169417	6	86,456	
DU10050	495444	1169417	7	91,492	
DU10051	494319	1169276	18	105,907	Duplicate of DU10051
DU10052	494372	1169301	15	249,123	
DU10053	494426	1169337	15	107,429	
DU10054	494467	1169304	11	195,169	
DU10055	494525	1169303	38	388,075	
DU10056	494572	1169307	528	220,070	
DU10057	494631	1169302	10	218,968	
DU10058	494679	1169298	10	219,712	
DU10059	494732	1169293	7	352,417	
DU10060	494779	1169307	9	200,486	
DU10061	494837	1169297	4	132,912	
DU10062	494871	1169301	7	193,501	
DU10063	494922	1169289	7	204,947	
DU10064	494982	1169287	7	245,050	
DU10065	495037	1169320	294	45,837	
DU10066	495086	1169298	15	74,504	
DU10067	495121	1169282	10	27,223	
DU10068	495167	1169298	19	51,229	
DU10069	495226	1169300	13	107,079	
DU10070	495278	1169302	8	160,146	
DU10071	495358	1169308	9	169,841	
DU10072	494343	1169591	4	111,851	
DU10073	494381	1169599	6	104,564	
DU10074	494431	1169604	9	99,214	
DU10075	494473	1169604	6	73,163	
DU10076	494534	1169588	8	127,324	
DU10077	494578	1169598	10	106,131	
DU10078	494639	1169602	7	55,863	
DU10079	494685	1169589	8	97,168	
DU10080	494727	1169582	108	300,254	
DU10081	494780	1169594	18	97,643	
DU10082	494828	1169607	30	133,721	
DU10083	494875	1169597	13	37,203	
DU10084	494930	1169611	52	525,305	
DU10085	494977	1169599	7	25,908	
DU10086	495028	1169599	7	17,634	
DU10087	495075	1169592	12	62,848	



For personal use only

DU10088	495132	1169586	4	38,085	
DU10089	495174	1169599	3	233,695	
DU10090	495240	1169604	8	33,583	
DU10091	495290	1169601	4	70,977	
DU10092	495311	1169592	5	33,965	
DU10093	495368	1169579	7	197,705	
DU10094	494306	1169685	7	137,589	
DU10095	494367	1169706	7	44,168	
DU10096	494450	1169699	14	97,728	
DU10097	494492	1169693	6	134,186	
DU10098	494530	1169691	8	128,888	
DU10099	494583	1169709	5	49,459	
DU10100	494583	1169709	6	46,263	Duplicate of DU10099
DU10101	494632	1169705	4	152,151	
DU10102	494676	1169695	20	93,203	
DU10103	494728	1169695	80	268,240	
DU10104	494773	1169695	17	53,757	
DU10105	494837	1169698	131	51,698	
DU10106	494887	1169700	28	640,888	
DU10107	494923	1169694	9	55,754	
DU10108	494967	1169695	39	234,302	
DU10109	495025	1169696	23	62,201	
DU10110	495073	1169703	15	42,407	
DU10111	495130	1169688	7	196,438	
DU10112	495179	1169697	6	147,888	
DU10113	495220	1169689	4	118,613	
DU10114	495274	1169699	6	108,149	
DU10115	495333	1169691	3	133,204	
DU10116	495363	1169693	6	196,366	
DU10117	494954	1169381	16	102,939	
DU10118	494333	1169199	34	115,148	
DU10119	494374	1169193	75	174,682	
DU10120	494431	1169191	67	102,851	
DU10121	494481	1169222	9	237,503	
DU10122	494527	1169189	18	590,824	
DU10123	494580	1169198	18	352,742	
DU10124	494613	1169182	32	338,316	
DU10125	494676	1169195	21	201,524	
DU10126	494726	1169196	10	216,470	
DU10127	494773	1169202	5	95,299	
DU10128	494823	1169187	7	223,817	
DU10129	494869	1169203	55	215,603	
DU10130	494914	1169206	9	204,139	
DU10131	494963	1169178	12	256,505	
DU10132	495027	1169196	7	232,452	



For personal use only

DU10133	495068	1169194	10	170,907	
DU10134	495125	1169195	9	160,207	
DU10135	495177	1169195	15	83,339	
DU10136	495227	1169202	7	203,747	
DU10137	495271	1169189	7	171,353	
DU10138	495382	1169196	6	97,599	
DU10139	494334	1169785	7	66,208	
DU10140	494390	1169811	6	84,821	
DU10141	494418	1169779	5	117,579	
DU10142	494486	1169818	4	99,393	
DU10143	494539	1169787	11	74,349	
DU10144	494576	1169791	4	170,481	
DU10145	494634	1169800	13	93,333	
DU10146	494677	1169796	199	281,700	
DU10147	494717	1169805	111	122,683	
DU10148	494830	1169800	51	266,947	
DU10149	494878	1169800	7	212,334	
DU10150	494923	1169794	30	129,213	
DU10151	494923	1169794	25	103,946	Duplicate of DU10150
DU10152	494983	1169797	36	257,997	
DU10153	495016	1169798	112	1,023,316	
DU10154	495075	1169798	16	310,306	
DU10155	495131	1169791	15	46,679	
DU10156	495172	1169793	21	105,955	
DU10157	495224	1169806	24	238,903	
DU10158	495298	1169789	14	101,699	
DU10159	495335	1169782	9	93,774	
DU10160	494956	1169390	6	155,358	
DU10161	494341	1169898	7	65,140	
DU10162	494375	1169898	9	72,205	
DU10163	494425	1169898	2	71,877	
DU10164	494466	1169903	5	48,734	
DU10165	494569	1169918	3	94,063	
DU10166	494670	1169908	21	225,305	
DU10167	494717	1169907	15	106,934	
DU10168	494848	1169894	6	85,593	
DU10169	494881	1169885	7	46,337	
DU10170	494931	1169896	11	88,116	
DU10171	494984	1169903	19	206,367	
DU10172	495015	1169897	26	188,015	
DU10173	495067	1169894	16	708,390	
DU10174	495116	1169893	8	241,018	
DU10175	495826	1169902	5	65,548	
DU10176	495218	1169902	10	124,122	
DU10177	495271	1169894	6	270,886	



For personal use only

DU10178	495370	1169859	4	205,276	
DU10179	494330	1169093	11	188,741	
DU10180	494382	1169096	25	271,315	
DU10181	494423	1169098	44	248,904	
DU10182	494477	1169105	38	545,960	
DU10183	494535	1169099	42	183,390	
DU10184	494576	1169098	56	89,884	
DU10185	494621	1169102	28	71,744	
DU10186	494679	1169099	25	99,954	
DU10187	494734	1169099	33	163,913	
DU10188	494783	1169089	16	343,445	
DU10189	494818	1169097	10	127,907	
DU10190	494867	1169101	9	102,743	
DU10191	494919	1169101	7	174,719	
DU10192	494973	1169100	20	155,757	
DU10193	495042	1169097	6	251,487	
DU10194	495082	1169081	12	160,068	
DU10195	495134	1169101	4	201,697	
DU10196	495172	1169107	4	211,045	
DU10197	495223	1169098	7	224,745	
DU10198	495277	1169100	9	96,510	
DU10199	495332	1169104	5	129,443	
DU10200	495379	1169075	9	71,317	
DU10201	495379	1169075	53	63,125	Duplicate of DU10200
DU10202	495426	1169106	12	56,348	
DU10203	495780	1169100	4	51,108	
DU10204	495778	1169100	6	114,580	
DU10205	494378	1169009	14	351,595	
DU10206	494420	1169005	18	214,176	
DU10207	494477	1169004	37	344,477	
DU10208	494536	1168991	32	109,105	
DU10209	494575	1169000	56	196,149	
DU10210	494631	1168988	10	324,295	
DU10211	494696	1168986	19	458,416	
DU10212	494733	1169012	4	299,851	
DU10213	494809	1168977	6	159,642	
DU10214	494821	1169009	12	171,048	
DU10215	494875	1168997	6	249,293	
DU10216	494923	1169000	9	202,503	
DU10217	494976	1168998	6	265,395	
DU10218	495019	1168993	5	259,461	
DU10219	495076	1169003	24	72,090	
DU10220	495132	1169000	5	183,399	
DU10221	495173	1169000	5	125,505	
DU10222	495230	1168994	4	117,431	



For personal use only

DU10223	495285	1169001	1	158,647	
DU10224	495334	1168994	6	216,325	
DU10225	495378	1168999	2	262,692	
DU10226	495422	1169000	5	149,128	
DU10227	495462	1168999	4	136,000	
DU10228	495689	1168999	3	106,655	
DU10229	495741	1169008	1	59,461	
DU10230	495778	1169017	3	107,061	
DU10231	493715	1168912	4	98,613	
DU10232	494012	1168874	35	132,397	
DU10233	494075	1168902	4	573,866	
DU10234	494125	1168895	9	428,349	
DU10235	494314	1168925	9	600,333	
DU10236	494258	1168883	24	404,793	
DU10237	494318	1168889	8	342,488	
DU10238	494375	1168898	30	257,673	
DU10239	494410	1168906	32	135,224	
DU10240	494476	1168899	38	302,260	
DU10241	494517	1168899	30	396,690	
DU10242	494564	1168891	59	288,153	
DU10243	494617	1168898	575	300,941	
DU10244	494678	1168907	13	56,762	
DU10245	494725	1168894	7	167,493	
DU10246	494775	1168897	4	44,860	
DU10247	494822	1168897	6	92,224	
DU10248	494866	1168894	7	132,081	
DU10249	494920	1168895	7	105,232	
DU10250	494973	1168892	14	75,935	
DU10251	494973	1168892	14	69,018	Duplicate of DU10250
DU10252	495024	1168896	29	316,494	
DU10253	495079	1168891	4	169,906	
DU10254	495129	1168880	3	212,051	
DU10255	495242	1168914	4	159,947	
DU10256	495340	1168902	3	95,892	
DU10257	493831	1168789	5	115,642	
DU10258	493965	1168777	6	112,586	
DU10259	494031	1168796	5	165,276	
DU10260	494073	1168796	5	234,413	
DU10261	494122	1168790	11	208,455	
DU10262	494183	1168792	30	251,657	
DU10263	494223	1168797	4	156,467	
DU10264	494272	1168785	17	431,428	
DU10265	494321	1168791	10	292,504	
DU10266	494388	1168803	16	410,524	
DU10267	494425	1168804	12	390,377	



For personal use only

DU10268	494481	1168799	21	232,521	
DU10269	494526	1168792	26	608,235	
DU10270	494586	1168794	14	240,977	
DU10271	494635	1168798	7	94,648	
DU10272	494677	1168808	5	41,258	
DU10273	494736	1168802	9	84,253	
DU10274	494767	1168794	10	33,323	
DU10275	494823	1168799	14	159,330	
DU10276	494868	1168797	6	61,936	
DU10277	494927	1168800	4	57,388	
DU10278	494982	1168794	6	101,290	
DU10279	495022	1168796	5	91,500	
DU10280	495064	1168809	6	89,673	
DU10281	495284	1168786	6	132,306	
DU10282	495420	1168776	5	105,111	
DU10283	493852	1168651	9	167,479	
DU10284	493942	1168698	10	181,541	
DU10285	493994	1168680	6	212,369	
DU10286	494033	1168695	4	124,437	
DU10287	494080	1168698	10	585,280	
DU10288	494114	1168699	16	290,705	
DU10289	494182	1168702	6	466,360	
DU10290	494223	1168696	19	401,810	
DU10291	494275	1168700	10	438,045	
DU10292	494319	1168701	6	452,142	
DU10293	494369	1168689	13	211,622	
DU10294	494423	1168704	9	360,802	
DU10295	494477	1168682	9	690,365	
DU10296	494519	1168697	23	431,585	
DU10297	494576	1168702	11	75,182	
DU10298	494618	1168705	17	129,651	
DU10299	494673	1168706	8	78,779	
DU10300	494735	1168691	21	81,421	
DU10301	494735	1168691	20	100,766	Duplicate of DU10300
DU10302	494773	1168697	4	127,511	
DU10303	494829	1168694	21	39,397	
DU10304	494880	1168695	3	106,595	
DU10305	494914	1168695	5	84,222	
DU10306	494989	1168689	93	57,754	
DU10307	495030	1168702	4	107,777	
DU10308	495103	1168663	4	58,547	
DU10309	495131	1168706	3	120,607	
DU10310	495171	1168696	2	164,281	
DU10311	495239	1168702	4	150,989	
DU10312	495425	1168726	7	153,595	



For personal use only

DU10313	495017	1170362	18	279,964	
DU10314	495070	1170376	45	340,451	
DU10315	495116	1170365	16	390,023	
DU10316	495170	1170365	14	156,327	
DU10317	495206	1170367	17	253,840	
DU10318	495268	1170378	31	192,342	
DU10319	495306	1170395	7	308,839	
DU10320	495367	1170362	9	276,873	
DU10321	495407	1170361	22	383,413	
DU10322	495453	1170365	5	228,353	
DU10323	495504	1170390	9	324,877	
DU10324	495705	1170368	31	75,135	
DU10325	495763	1170367	7	322,552	
DU10326	495688	1170324	36	171,622	
DU10327	495816	1170374	60	270,335	
DU10328	495863	1170373	10	219,411	
DU10329	495912	1170367	7	271,637	
DU10330	495059	1170471	19	268,587	
DU10331	495175	1170474	52	350,262	
DU10332	495219	1170481	11	364,895	
DU10333	495282	1170478	51	226,404	
DU10334	495314	1170467	11	301,178	
DU10335	495362	1170471	12	355,691	
DU10336	495417	1170471	12	285,713	
DU10337	495463	1170471	12	332,682	
DU10338	495509	1170479	10	315,603	
DU10339	495560	1170470	8	304,879	
DU10340	495605	1170476	6	136,280	
DU10341	495765	1170454	48	139,765	
DU10342	495824	1170449	18	46,463	
DU10343	495864	1170467	9	31,753	
DU10344	495904	1170476	56	50,876	
DU10345	494888	1170577	9	243,272	
DU10346	495006	1170538	4	169,012	
DU10347	495109	1170567	8	308,903	
DU10348	495159	1170582	41	512,960	
DU10349	495208	1170585	10	670,155	
DU10350	495261	1170573	29	150,242	
DU10351	495261	1170573	29	124,492	Duplicate of DU10350
DU10352	495309	1170575	67	1,025,979	
DU10353	495362	1170573	11	327,502	
DU10354	495327	1170620	113	542,429	
DU10355	495415	1170566	11	311,123	
DU10356	495457	1170573	5	80,419	
DU10357	495513	1170562	8	264,361	



For personal use only

DU10358	495553	1170562	9	232,016	
DU10359	495611	1170566	8	49,702	
DU10360	495648	1170572	2	203,025	
DU10361	495689	1170577	4	152,675	
DU10362	495741	1170559	198	167,031	
DU10363	495812	1170564	12	127,524	
DU10364	495864	1170569	28	112,895	
DU10365	495913	1170569	11	44,801	
DU10366	494612	1170672	8	76,840	
DU10367	494668	1170667	16	23,991	
DU10368	494709	1170676	6	14,806	
DU10369	494763	1170665	11	21,407	
DU10370	494815	1170677	6	58,351	
DU10371	494907	1170668	11	43,372	
DU10372	494973	1170680	9	309,060	
DU10373	495030	1170682	7	424,058	
DU10374	495073	1170688	9	215,242	
DU10375	495110	1170672	20	260,118	
DU10376	495161	1170676	19	333,287	
DU10377	495217	1170663	20	733,495	
DU10378	495264	1170669	34	762,519	
DU10379	495311	1170667	270	1,843,716	
DU10380	495367	1170663	42	435,264	
DU10381	495411	1170671	10	512,593	
DU10382	495466	1170675	12	338,094	
DU10383	495507	1170667	6	340,225	
DU10384	495555	1170674	6	157,606	
DU10385	495614	1170665	7	42,364	
DU10386	495667	1170680	6	77,255	
DU10387	495718	1170661	9	183,762	
DU10388	495764	1170669	5	112,411	
DU10389	495824	1170665	6	50,804	
DU10390	495863	1170673	115	126,443	
DU10391	495904	1170684	6	143,619	
DU10392	494617	1170770	6	149,699	
DU10393	494649	1170759	8	123,273	
DU10394	494763	1170785	6	34,949	
DU10395	494814	1170779	5	93,403	
DU10396	494911	1170786	6	127,391	
DU10397	494954	1170767	12	142,956	
DU10398	495022	1170780	7	125,002	
DU10399	495059	1170767	31	61,409	
DU10400	495102	1170780	21	65,218	
DU10401	495102	1170780	39	57,465	Duplicate of DU10400
DU10402	495160	1170776	9	196,901	



DU10403	495215	1170771	31	124,042	
DU10404	495293	1170785	61	657,251	
DU10405	495264	1170769	104	96,518	
DU10406	495316	1170764	165	298,454	
DU10407	495364	1170770	37	162,414	
DU10408	495399	1170773	23	97,343	
DU10409	495463	1170770	21	30,783	
DU10410	495520	1170764	11	39,997	
DU10411	495566	1170772	8	132,204	
DU10412	495618	1170773	17	851,709	
DU10413	495658	1170773	19	344,559	
DU10414	495715	1170789	16	111,818	
DU10415	495765	1170770	7	261,181	
DU10416	495816	1170763	8	178,776	
DU10417	495851	1170778	7	154,787	
DU10418	495917	1170764	10	174,757	
DU10419	495903	1170784	13	384,015	

For personal use only



Table 3. Rock Chip sample results from Timbakouna Gold Project

Sample ID	East	North	Au ppm	As ppm
RK20001	554900	1189521	0.01	11
RK20002	554960	1189527	0.01	20
RK20003	555038	1189504	0.01	13
RK20004	555128	1189452	0.01	15
RK20005	555150	1189483	0.01	3
RK20006	555246	1189503	0.02	37
RK20007	555295	1189506	0.05	37
RK20008	556143	1189501	0.01	20
RK20009	555898	1189220	9.55	1451
RK20010	555767	1189525	0.39	2732
RK20011	555770	1189526	0.18	1502
RK20012	555880	1189457	0.08	143
RK20013	556069	1189520	0.02	343
RK20014	555879	1189464	0.04	469
RK20015	556319	1189507	0.22	75
RK20016	556428	1189485	1.25	3445
RK20017	556860	1189523	0.02	69
RK20018	557362	1189521	0.01	105
RK20019	557374	1189506	0.01	162
RK20020	557366	1189483	0.06	278
RK20021	557356	1189468	0.14	336
RK20022	557625	1189512	0.01	454
RK20023	558961	1189506	0.01	37
RK20024	559217	1189506	0.01	12
RK20025	555373	1189236	0.01	27
RK20026	555387	1189278	0.01	18
RK20027	555456	1189250	0.01	16
RK20028	555461	1189255	0.01	12
RK20029	556449	1189230	0.01	69
RK20030	556540	1189247	0.01	21
RK20031	558877	1189264	0.02	321
RK20032	558959	1189271	0.01	26
RK20033	559464	1189252	0.01	81
RK20034	559580	1189251	0.06	16
RK20035	557300	1188904	0.02	30
RK20036	557434	1188936	0.01	223
RK20037	557742	1189005	0.02	19
RK20038	558812	1188857	0.04	1214
RK20039	558850	1188905	0.48	3933
RK20040	559213	1188998	0.02	212
RK20041	556429	1188686	0.11	50

For personal use only



Sample ID	East	North	Au ppm	As ppm
RK20042	556600	1188711	0.01	35
RK20043	556644	1188715	0.01	37
RK20044	556669	1188719	0.01	22
RK20045	556795	1188752	0.06	20
RK20046	557249	1188776	0.12	163
RK20047	557243	1188784	0.01	33
RK20048	557256	1188805	0.08	318
RK20049	557326	1188841	0.02	23
RK20050	557338	1188845	0.09	1448
RK20051	557396	1188859	0.06	779
RK20052	557481	1188854	0.12	342
RK20053	557484	1188848	0.04	47
RK20054	558887	1188687	0.07	2140
RK20055	554714	1188520	0.01	41
RK20056	556356	1188541	0.01	234
RK20057	556415	1188541	0.01	103
RK20058	556533	1188538	0.01	83
RK20059	556606	1188530	0.01	49
RK20060	556664	1188478	0.11	37
RK20061	556796	1188443	0.01	41
RK20062	556832	1188429	0.13	115
RK20063	556853	1188426	0.02	71
RK20064	556927	1188449	0.01	39
RK20065	557369	1188512	0.06	174
RK20066	557366	1188524	0.06	571
RK20067	558902	1188447	0.01	1417
RK20068	554761	1188275	0.01	38
RK20069	554895	1188252	0.01	32
RK20070	554973	1188230	0.01	18
RK20071	554995	1188240	0.01	13
RK20072	555052	1188266	0.01	10
RK20073	555195	1188270	0.01	21
RK20074	555272	1188257	0.01	43
RK20075	555436	1188266	0.01	10
RK20076	555382	1188308	0.01	20
RK20077	556513	1188122	0.01	11
RK20078	556502	1188158	0.01	423
RK20079	556626	1188277	0.02	18
RK20080	556755	1188254	0.09	877
RK20081	556797	1188264	0.03	58
RK20082	556873	1188252	0.01	29
RK20083	556925	1188254	0.01	19



Sample ID	East	North	Au ppm	As ppm
RK20084	557581	1188260	2.25	2493
RK20085	557701	1188243	0.11	374
RK20086	554694	1188033	0.02	21
RK20087	554724	1188034	0.01	19
RK20088	554802	1188015	0.01	15
RK20089	554823	1187997	0.01	8
RK20090	555972	1187976	0.29	29
RK20091	556652	1188121	0.01	99
RK20092	556637	1188117	0.01	9
RK20093	556709	1188194	0.15	155
RK20094	556702	1188184	0.02	78
RK20095	556707	1188185	0.02	60
RK20096	556840	1187995	0.04	296
RK20097	556886.9	1188005	0.01	18
RK20098	556903.8	1188005	0.01	157
RK20099	557032.9	1187990	0.01	149
RK20100	557080.9	1188002	0.01	85
RK20102	557288.5	1188005	0.02	381
RK20103	558697	1188017	0.08	100
RK20104	559814	1187993	0.07	362
RK20105	554682	1187767	0.01	37
RK20106	554996	1187751	0.01	17
RK20107	555145	1187756	0.01	14
RK20108	555904	1187752	0.01	28
RK20109	557103	1187757	0.02	418
RK20110	557139	1187753	0.02	62
RK20111	557713	1187732	0.02	276
RK20112	558090	1187765	0.02	1415
RK20113	559747	1187675	0.01	46
RK20114	559822	1187698	0.24	1165
RK20115	559835	1187663	0.10	220
RK20116	554713	1187543	0.02	29
RK20117	555893	1187519	0.03	22
RK20118	558950	1187549	0.02	14
RK20119	559122	1187554	0.52	482



Table 4. Dump sample results from Timbakouna Gold Project

Sample ID	East	North	Au ppb	As ppb
DU20001	555262	1189501	6.24	24,115
DU20002	555710	1189506	15.63	33,405
DU20003	555823	1189466	65.15	248,469
DU20004	555879	1189464	78.55	191,063
DU20005	555980	1189498	34.14	288,019
DU20006	556032	1189505	44.71	359,489
DU20007	556082	1189508	73.32	317,232
DU20008	556143	1189501	25.68	72,356
DU20009	556163	1189499	31.18	232,258
DU20010	556283	1189492	150.56	301,986
DU20011	556429	1189516	14.98	119,690
DU20012	556552	1189501	22.55	78,342
DU20013	556621	1189518	62.27	61,339
DU20014	556785	1189513	11.68	33,257
DU20017	555765	1189255	101.42	96,004
DU20018	555827	1189250	29.41	390,911
DU20019	555883	1189257	39.04	313,420
DU20020	555910	1189259	24.27	430,529
DU20021	555975	1189261	77.56	112,190
DU20022	556017	1189231	70.91	206,998
DU20023	556132	1189257	32.94	273,870
DU20024	556235	1189254	96.8	199,290
DU20025	556320	1189256	46.09	56,905
DU20026	556449	1189230	14.6	356,207
DU20027	556540	1189247	29.58	281,689
DU20028	558021	1189270	61.32	291,945
DU20029	558066	1189267	227.17	773,649
DU20030	559444	1189246	186.98	617,662
DU20031	555350	1189043	4.78	47,087
DU20032	556042	1188868	14.12	48,583
DU20033	556140	1188869	6.13	101,627
DU20034	556167	1188854	7.23	36,859
DU20035	556269	1188884	7.16	171,352
DU20036	556317	1188882	6.26	142,284
DU20037	556324	1188846	4.55	121,195
DU20038	556369	1188859	10.36	116,963
DU20039	556564	1188984	99.83	142,626
DU20040	558132	1188974	14.73	203,349
DU20041	558811	1188897	20.19	189,652
DU20042	558804	1188846	35.42	333,361
DU20043	558850	1188906	153.77	1,255,718
DU20044	558895	1188875	449.72	749,257

For personal use only



For personal use only

DU20045	559393	1189007	39.13	71,166
DU20046	559491	1188998	52.82	198,500
DU20047	559958	1188973	12.12	38,623
DU20048	555588	1188745	7.64	60,813
DU20049	555730	1188714	37.7	137,334
DU20050	555778	1188649	27.39	330,292
DU20052	555768	1188614	14.66	352,004
DU20053	555805	1188613	13.04	189,696
DU20054	555776	1188524	16.05	307,694
DU20055	555871	1188566	13.44	102,444
DU20056	555941	1188574	9.58	178,632
DU20057	556058	1188749	5.86	228,407
DU20058	556089	1188781	47.9	223,653
DU20059	556142	1188781	55.31	159,743
DU20060	556186	1188741	4.78	132,291
DU20061	556264	1188797	5.54	110,534
DU20062	558697	1188593	8.64	130,612
DU20063	558816	1188616	96.72	275,903
DU20064	558887	1188687	69.26	666,391
DU20065	558858	1188682	117.58	1,007,490
DU20066	558913	1188629	29.32	243,410
DU20067	558870	1188589	236.31	1,213,818
DU20068	558899	1188527	112.18	812,953
DU20069	558959	1188667	20.26	152,177
DU20070	558964	1188710	16.48	185,583
DU20071	554822	1188531	3.38	57,034
DU20072	555642	1188525	13.22	116,268
DU20073	555788	1188422	44.26	236,200
DU20074	555822	1188457	45.52	330,189
DU20075	555843	1188408	73.85	142,463
DU20076	556329	1188545	4.84	109,712
DU20077	556569	1188520	15.93	54,504
DU20078	558829	1188494	10.09	52,827
DU20079	558903	1188447	29.87	1,341,522
DU20080	558881	1188427	13.56	275,458
DU20081	554758	1188275	3.45	48,781
DU20083	555382	1188298	11.99	8,982
DU20084	555533	1188262	26.59	22,259
DU20085	555740	1188268	8.14	26,975
DU20086	555762	1188252	8.82	60,242
DU20087	555780	1188275	8.31	89,114
DU20088	555784	1188316	13.13	90,182
DU20089	555945	1188252	13.1	148,621
FLOGRA	556420	1188541	6.18	137,524
DU20090	556409	1188377	7.36	130,327



For personal use only

DU20091	556499	1188154	73.99	134,643
DU20092	556523	1188145	9.29	218,300
DU20093	556513	1188122	10.81	247,868
DU20094	558832	1188277	5.88	116,552
DU20095	558831	1188333	6.16	61,350
DU20096	558854	1188262	10.7	174,892
DU20097	558937	1188260	3810	404,370
DU20098	558952	1188228	167.69	371,405
DU20099	559000	1188269	6.87	469,518
DU20100	559059	1188290	8.79	48,149
DU20101	559562	1188290	2.44	71,760
DU20102	559562	1188290	8.01	88,460
DU20103	556429	1188008	45	65,759
DU20104	556621	1188086	19.88	113,892
DU20105	556652	1188117	82.94	442,901
DU20106	556702	1188184	17.91	48,892
DU20107	556707	1188185	15.16	27,301
DU20108	556587	1187984	9.28	119,738
DU20109	556679	1188043	26.72	246,511
DU20110	556666	1188074	52.49	195,652
DU20111	556702	1188058	7.14	214,471
DU20112	556759	1188019	7.89	150,083
DU20113	557821	1187961	6.9	228,698
DU20114	559345	1188022	9.17	70,522
DU20115	559360	1188043	10.68	27,374
DU20116	559761	1188010	13.41	94,032
DU20117	559790	1187990	25.08	561,582
DU20118	559805	1187968	147.08	499,014
DU20119	556133	1187771	9.72	104,881
DU20120	556169	1187743	218.35	441,442
DU20121	556208	1187732	19.97	643,623
DU20122	556251	1187724	35.48	723,901
DU20123	556233	1187760	63.47	625,195
DU20124	556234	1187696	30.4	659,407
DU20125	556230	1187668	65.1	672,972
DU20126	556296	1187737	86.8	800,501
DU20127	556335	1187759	32.91	179,206
DU20128	556543	1187768	21.22	407,611
DU20129	558937	1187735	35.58	317,216
DU20130	558943	1187701	16.87	72,525
DU20131	558957	1187671	9.43	71,120
DU20132	559100	1187752	7.08	1,033,840
DU20133	559178	1187791	7.46	22,259
DU20134	554732	1187501	4.64	21,023
DU20135	555946	1187493	8.23	32,180



DU20136	556104	1187499	12.81	133,138
DU20137	556092	1187546	6.39	124,612
DU20138	556130	1187584	14.35	127,249
DU20139	556164	1187596	91.45	329,803
DU20140	556195	1187594	24.31	699,685
DU20141	556264	1187661	145.34	493,274
DU20142	556279	1187605	333.15	854,995
DU20143	556299	1187558	360.27	632,178
DU20144	556356	1187514	39.63	136,696
DU20145	556402	1187488	120.42	650,683
DU20146	556462	1187497	42.69	340,648
DU20147	556495	1187530	47.43	420,618
DU20148	556557	1187507	24.54	411,537
DU20149	556609	1187425	17.2	957,579
DU20150	556721	1187492	5.13	54,196
DU20151	557494	1187488	4.3	90,831
DU20152	557494	1187488	6.35	80,421
DU20153	558816	1187502	4.96	100,012
DU20154	558849	1187514	5.1	186,889
DU20155	558938	1187532	216.04	68,833
DU20156	559034	1187533	79.85	172,546
DU20157	559073	1187515	46.56	254,909
DU20158	559202	1187534	11.14	45,856
DU20159	559854	1187618	258.07	53,843

For personal use only



Section 1: Sampling Techniques and Data – Exploration Results

Criteria	JORC Code Explanation	Commentary
Sampling Technique	<p>Nature and quality of sampling (eg cut channels, random chips, or specific specialised industry standard measurement tools appropriate to the minerals under investigation, such as downhole gamma sondes, or handheld XRF instruments, etc). These examples should not be taken as limiting the broad meaning of sampling. Include reference to measures taken to ensure sample representivity and the appropriate calibration of any measurement tools or systems used. Aspects of the determination of mineralisation that are Material to the Public Report.</p> <p>In cases where 'industry standard' work has been done this would be relatively simple (eg 'reverse circulation drilling was used to obtain 1 m samples from which 3 kg was pulverised to produce a 30 g charge for fire assay'). In other cases more explanation may be required, such as where there is coarse gold that has inherent sampling problems. Unusual commodities or mineralisation types (eg submarine nodules) may warrant disclosure of detailed information.</p>	<p>Rock Chip Samples Rock chip samples were taken from in-situ representative material and are generally 2 to 3 kg in size.</p> <p>Dump Samples A composite 4 to 5kg sample was taken from artisanal gold mining spoils and sieved to -2mm to remove any rock fragments. Dump samples are taken on a regular 100 x 50m grid.</p>
Drilling	<p>Drill type (eg core, reverse circulation, open-hole hammer, rotary air blast, auger, Bangka, sonic, etc) and details (eg core diameter, triple or standard tube, depth of diamond tails, face-sampling bit or other type, whether core is oriented and if so, by what method, etc).</p>	<p>There is no drilling results reported in this announcement.</p>
Drill Sample Recovery	<p>Method of recording and assessing core and chip sample recoveries and results assessed.</p> <p>Measures taken to maximise sample recovery and ensure representative nature of the samples.</p> <p>Whether a relationship exists between sample recovery and grade and whether sample bias may have occurred due to preferential loss/gain of fine/coarse material.</p>	<p>There is no drilling results reported in this announcement.</p>
Logging	<p>Whether core and chip samples have been geologically and geotechnical logged to a level of detail to support appropriate Mineral Resource estimation, mining studies and metallurgical studies.</p> <p>Whether logging is qualitative or quantitative in nature. Core (or costean/trench, channel, etc) photography.</p> <p>The total length and percentage of the relevant intersections logged.</p>	<p>Rock chip and dump samples were geologically logged with rock type, veining and any sulphide mineralogy noted.</p> <p>Logging is both qualitative and quantitative in nature.</p>
Sub-Sampling Technique and Sample Preparation	<p>If core, whether cut or sawn and whether quarter, half or all core taken. If non-core, whether riffled, tube sampled, rotary split, etc and whether sampled wet or dry.</p>	<p>Rock Chip and Dump samples A 3 to 4 kg in-situ representative sample was taken for assay. These samples were whole crushed and a 50g sub sample taken for analysis</p>



For personal use only

	<p>For all sample types, the nature, quality and appropriateness of the sample preparation technique.</p> <p>Quality control procedures adopted for all sub-sampling stages to maximise representivity of samples.</p> <p>Measures taken to ensure that the sampling is representative of the in-situ material collected, including for instance results for field duplicate/second-half sampling. Whether sample sizes are appropriate to the grain size of the material being sampled.</p>	
Quality of Assay Data and Laboratory Tests	<p>The nature, quality and appropriateness of the assaying and laboratory procedures used and whether the technique is considered partial or total.</p> <p>For geophysical tools, spectrometers, handheld XRF instruments, etc, the parameters used in determining the analysis including instrument make and model, reading times, calibrations factors applied and their derivation, etc.</p> <p>Nature of quality control procedures adopted (eg standards, blanks, duplicates, external laboratory checks) and whether acceptable levels of accuracy (ie lack of bias) and precision have been established.</p>	<p>Rock Chip Samples Analysis was conducted by Proslabs in Kouroussa, Guinea, using a standard Fire-Assay 50 method for gold. Results are reported to 10 ppb accuracy. Analysis for As was conducted using 10g sample with a 2 acid digest followed by ICP-MS and is reported to a 1.4 ppb As lower detection limit.</p> <p>Dump Samples Analysis was conducted by Proslabs in Kouroussa, Guinea, using a standard Fire-Assay 50 followed by ICP-MS method for gold. Results are reported to 3 ppb accuracy. Analysis for As was conducted using 10g sample with a 2 acid digest followed by ICP-MS and is reported to a 1.4 ppb As lower detection limit.</p>
Verification of Sampling and Assaying	<p>The verification of significant intersections by either independent or alternative company personnel.</p> <p>The use of twinned holes.</p> <p>Documentation of primary data, data entry procedures, data verification, data storage (physical and electronic) protocols.</p> <p>Discuss any adjustment to assay data</p>	<p>Rock Chip Samples 1 in 20 samples where repeated by the laboratory.</p> <p>Dump Samples 1 in 20 samples where repeated by the laboratory. Duplicate samples were taken and submitted at a rate of 1 in 50. The laboratory also used a range of internal standards at a rate of 1 standard per 20 samples.</p> <p>All assay results in the database have been checked against the original laboratory assay certificates (PDF's)</p> <p>All laboratory QAQC results were acceptable.</p> <p>There has been no adjustment to assay data.</p>
Location of Data points	<p>Accuracy and quality of surveys used to locate drill holes (collar and down-hole surveys), trenches, mine workings and other locations used in Mineral Resource estimation.</p> <p>Specification of the grid system used Quality and adequacy of topographic control</p>	<p>The coordinate system used is Conakry 1905/UTM zone 28N grid for Gauoul and Conakry 1905/UTM zone 29N for the Siguiri Basin.</p> <p>A handheld Garmin GPS was used for rock chip and dump samples.</p>
Data Spacing and Distribution	<p>Data spacing for reporting of Exploration Results</p> <p>Whether the data spacing and distribution is sufficient to establish the degree of geological and grade continuity appropriate for the Mineral Resource and Ore Reserve estimation procedure(s) and classifications applied.</p> <p>Whether sample compositing has been applied</p>	<p>Rock Chip There is no specific spacing for rock chip samples</p> <p>Dump Samples The dump sampling was taken on an approximately 100 x 50m grid where the grid location was close to an artisanal working.</p> <p>There is no Mineral Resource and Ore Reserve estimation reported here.</p>
Orientation of Data in Relation to	<p>Whether the orientation of sampling achieves unbiased sampling of possible structures and</p>	<p>Rock Chip Samples</p>



For personal use only

Geological Structure	<p>the extent to which this is known, considering the deposit type.</p> <p>If the relationship between the drilling orientation and the orientation of key mineralised structures is considered to have introduced a sampling bias, this should be assessed and reported if material.</p>	<p>It is no known if the orientation of the sampling has created a sample bias at this stage.</p> <p>Dump Samples</p> <p>It is no known if the orientation of the sampling has created a sample bias at this stage.</p>
Sample Security	<p>The measures taken to ensure sample security</p>	<p>All samples taken were hand delivered to the laboratory in Kouroussa. The laboratory checked the samples delivered against the sample dispatch sheet and verified this was correct before commencing analysis.</p>
Section 2 Reporting of Exploration Results		
Mineral Tenement and Land Tenure Status	<p>Type, reference name/number, location and ownership including agreements or material issues with third parties such as joint ventures, partnerships, overriding royalties, native title interests, historical sites, wilderness or national park and environmental settings.</p> <p>The security of the tenure held at the time of reporting along with any known impediments to obtaining a licence to operate in the area.</p>	<p>The Siguir Project comprises 14 tenements which range from reconnaissance applications, granted reconnaissance permits and granted exploration permits (see Table 1). Reconnaissance permits allow prospecting and non-ground disturbing activity such as surface sampling. Exploration permits allow ground disturbing activity such as auger or RC drilling.</p> <p>Reconnaissance permits can be converted to exploration permits upon justification of results. All permits are valid and registered in the Guinea mining cadastre system.</p> <p>The Angex agreement with Wassolon Mining Group is detailed in previous reports</p>
Exploration Done by Other Parties	<p>Acknowledgment and appraisal of exploration by other parties.</p>	<p>There has been very little exploration conducted within the tenement areas. The only historic exploration of note is RC drilling in the Timbakouna tenement and soil sampling in the Kantoumanina. The results of this are discussed in previous reports.</p> <p>There is no known exploration in the Dadjan permit.</p>
Geology	<p>Deposit type, geological setting and style of mineralisation.</p>	<p>The Siguir Basin projects are situated in rocks of the Birimian Supergroup which consists of meta-sediments (shale, greywacke, cherts) and mafic to intermediate volcanics variably intruded by felsic intrusives such as granite and tonalite.</p> <p>The basin has been multiply deformed with basin wide NW and NE trending faults/shears. Orogenic gold mineralisation is typically hosted within these structural corridors, generally in close proximity to the felsic intrusives which are postulated to be the heat and fluid source for gold mineralisation.</p> <p>Gold mineralisation is typically quartz vein hosted with pyrite, pyrrhotite and hematite and associated sericite and chlorite alteration the main accessory minerals.</p> <p>The Siguir Basin is deeply weathered with a strong laterite surface developed with nodular to pisolitic hard cap which is a host to remobilised gold mineralisation and the target for artisanal gold miners.</p>
Drill Hole Information	<p>A summary of all information material to the understanding of the exploration results including a tabulation of the following information for all Material drill holes:</p> <ul style="list-style-type: none"> • easting and northing of the drill hole collar • elevation or RL (Reduced Level – elevation above sea level in metres) of the drill hole collar • dip and azimuth of the hole • down hole length and interception depth • hole length 	<p>There is no drilling results reported in this announcement.</p>



For personal use only

	<ul style="list-style-type: none"> If the exclusion of this information is justified on the basis that the information is not Material and this exclusion does not detract from the understanding of the report, the Competent Person should clearly explain why this is the case. 	
Data Aggregation Methods	<p>In reporting Exploration Results, weighting averaging techniques, maximum and/or minimum grade truncations (eg cutting of high grades) and cut-off grades are usually Material and should be stated.</p> <p>Where aggregate intercepts incorporate short lengths of high grade results and longer lengths of low grade results, the procedure used for such aggregation should be stated and some typical examples of such aggregations should be shown in detail.</p> <p>The assumptions used for any reporting of metal equivalent values should be clearly stated.</p>	No data aggregation methods have been applied. All results received have been reported as is.
Relationship Between Mineralisation Widths and Intercept Lengths	<p>These relationships are particularly important in the reporting of Exploration Results</p> <p>If the geometry of the mineralisation with respect to the drill hole angle is known, its nature should be reported. If it is not known and only the down hole lengths are reported, there should be a clear statement to this effect (eg 'down hole length, true width not known').</p>	There is no drilling results reported in this announcement.
Diagrams	<p>Appropriate maps and sections (with scales) and tabulations of intercepts should be included for any significant discovery being reported. These should include, but not be limited to a plan view of drill hole collar locations and appropriate sectional views.</p>	Diagrams including plan maps with sample results are provided with this report.
Balanced Reporting	<p>Where comprehensive reporting of all Exploration Results is not practicable, representative reporting of both low and high grades and/or widths should be practiced to avoid misleading reporting of Exploration Results.</p>	The company believes this announcement is a balanced report, and that all material information has been reported.
Other Substantive Exploration Data	<p>Other exploration data, if meaningful and material, should be reported including (but not limited to): geological observations; geophysical survey results; geochemical survey results; bulk samples – size and method of treatment; metallurgical test results;</p> <p>bulk density, groundwater, geotechnical and rock characteristics; potential deleterious or contaminating substances.</p>	All substantive historical exploration data has been discussed in previous reports by the company.
Further Work	<p>The nature and scale of planned further work (eg tests for lateral extensions or large scale step out drilling).</p> <p>Diagrams clearly highlighting the areas of possible extensions, including the main geological interpretations and future drilling areas, provided this information is not commercially sensitive.</p>	Planned further work includes further surface sampling, mapping, auger drilling, air-core and RC drilling of gold targets that have identified.