

ersonal use only

# RIU Sydney Resources Round-up

*Corporate Presentation*

*David Wrench CEO*



# Important Notice and Disclaimer

**COMPANY DISCLAIMER:** The information in this presentation is an overview and does not contain all information necessary for investment decisions. In making investment decisions in connection with any acquisition of securities, investors should rely on their own examination and consult their own legal, business and/or financial advisers.

This document has been made available for information purposes only and does not constitute a prospectus, short form prospectus, profile statement or offer information statement. This document is not subject to the disclosure requirements affecting disclosure documents under Chapter 6D of the Corporations Act 2001 (Cth). The information in this document may not be complete and may be changed, modified or amended at any time by the Company, and is not intended to, and does not, constitute representations and warranties of the Company.

QPM Energy Limited does not have a significant operating history on which to base an evaluation of its business and prospects. Therefore, the information contained in this document is inherently speculative. Further, securities of companies such as the Company generally involve a higher degree of risk and are more volatility than securities of more established companies. Accordingly, an investment in the Company must be considered as speculative.

The information contained in this document has been prepared in good faith, neither the Company, QPM Energy Limited, or any of their respective directors, officers, agents, employees or advisors give any representation or warranty, express or implied, as to the fairness, accuracy, completeness or correctness of the information, opinions and conclusions contained in this document. Accordingly, to the maximum extent permitted by law, none of the Company, QPM Energy Limited, their respective directors, employees or agents, advisers, nor any other person accepts any liability whether direct or indirect, express or limited, contractual, tortious, statutory or otherwise, in respect of, the accuracy or completeness of the information or for any of the opinions contained in this document or for any errors, omissions or misstatements or for any loss, howsoever arising, from the use of this document.

This document may contain statements that may be deemed “forward looking statements”. Forward risks, uncertainties and other factors, many of which are outside the control of the Company can cause actual results to differ materially from such statements.

The Company makes no undertaking to update or revise such statements but has made every endeavour to ensure that they are fair and reasonable at the time of making this document. Investors are cautioned that any forward-looking statements are not guarantees of future performance and that actual results or developments may differ materially from those projected in any forward-looking statements made.



# QPM Energy Ltd

## QPM Energy Ltd (ASX:QPM) is a unique, **integrated energy business**

- Integrated – from molecule to electron...

- Gas reserves
- Gas production
- Gas supply, transport and storage
- Conversion of gas to electricity dispatched into the NEM

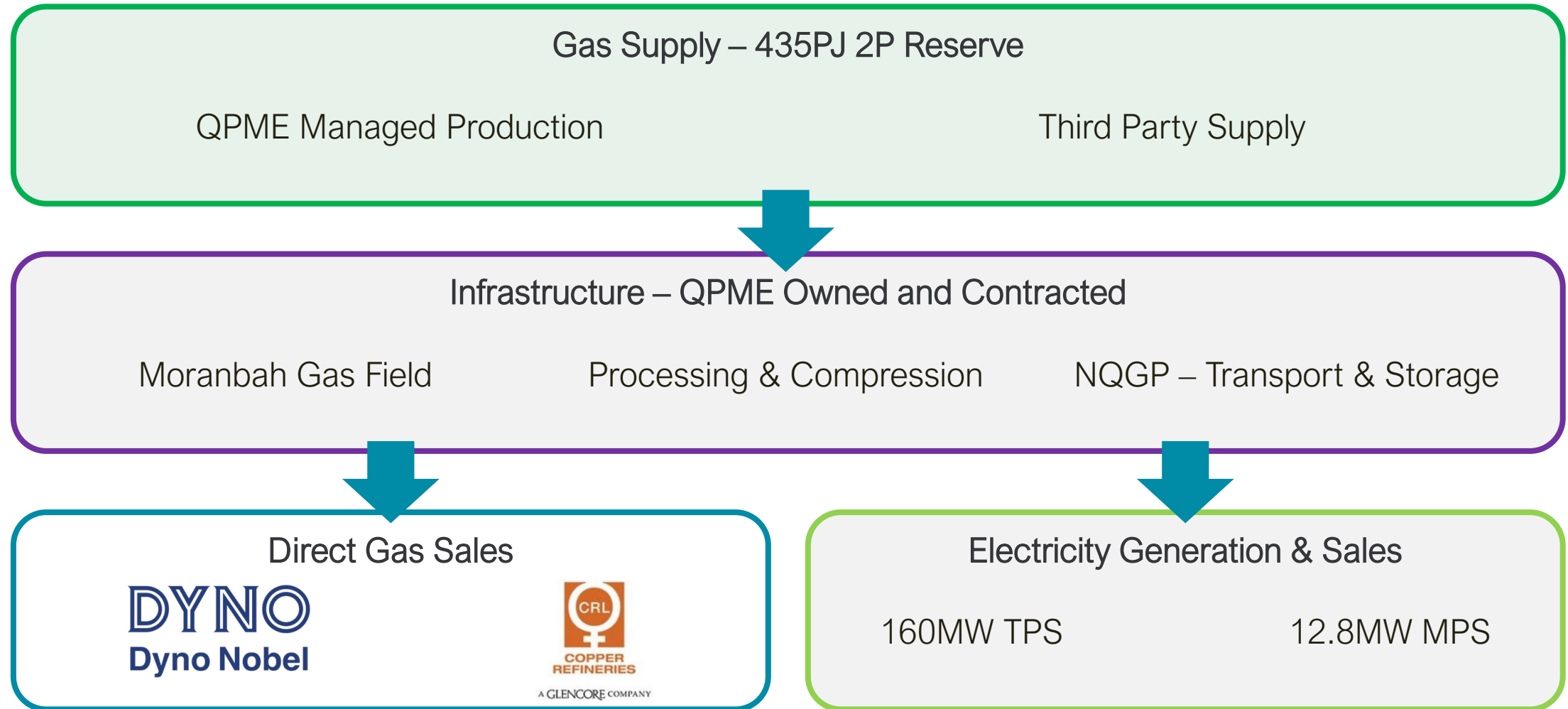
- Energy

- Revenues from gas and electricity sales

- Business

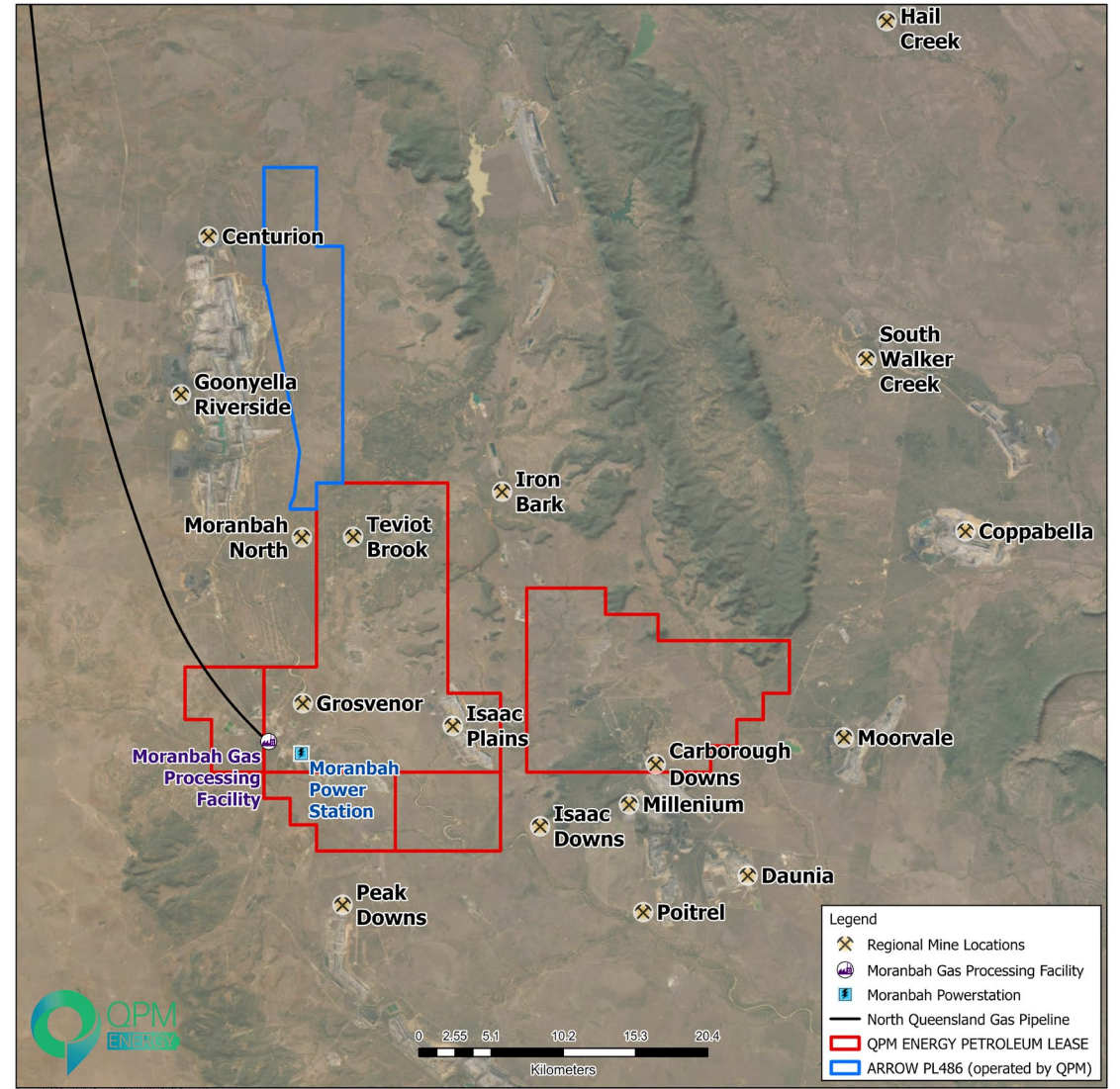
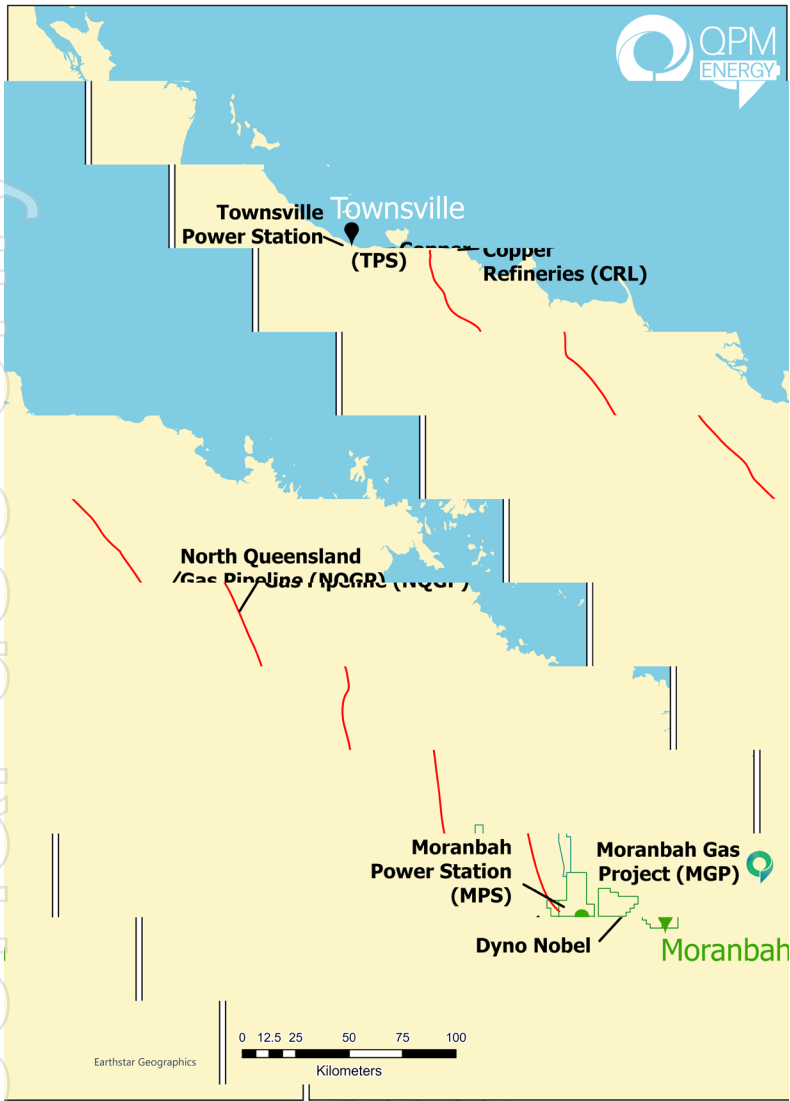
- Gas and electricity sales revenues of \$75 million for FY2024 and \$76 million for 9 months to Mar 2025.

# QPM's Integrated Business Model



Personal use only

# QPM's assets



# QPM Energy: By the Numbers

## Gas Supply ~10PJ per year

### MGP Reserves

- 435PJ 2P reserves
- >300PJ uncontracted

### MGP Production

- 22-24TJ/day
- 125+ producing wells
- 7 new wells

### Third Party Supply

- 3-6TJ/day
- Waste gas from regional coal mines

## Infrastructure

### Field Infrastructure

- 500+km gas gathering / water pipelines
- 150km 11kV electricity distribution network
- Tie in points for third party gas supply

### Compression + Storage

- 64TJ/day compression capacity
- NQGP transport & storage capacity
- Current utilisation ~10%

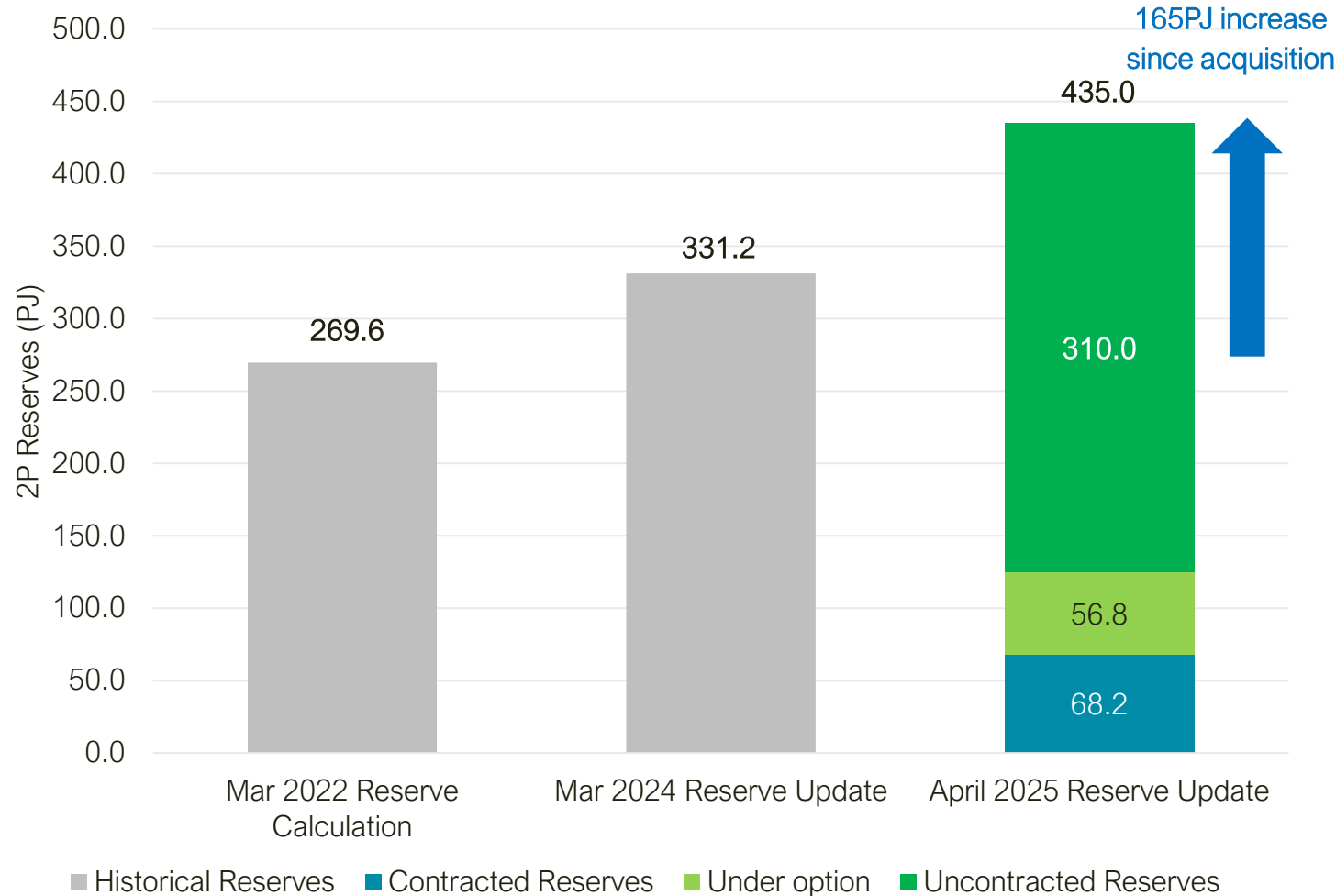
### Electricity Generation

- 160MW Townsville Power Station
- 12.8MW Moranbah Power Station

# MGP Reserve Growth

- MGP has 435PJ\* of 2P reserves independently certified by Netherland Sewell & Associates as at 30 April 2025.
- QPM's successful reinvigoration of the MGP has delivered increased production and a growing reserve base.
- MGP is evolving into a Tier 1 asset with potential for significant additional reserve and resource growth.

\* 1PJ = 1,000TJ = 1,000,000GJ

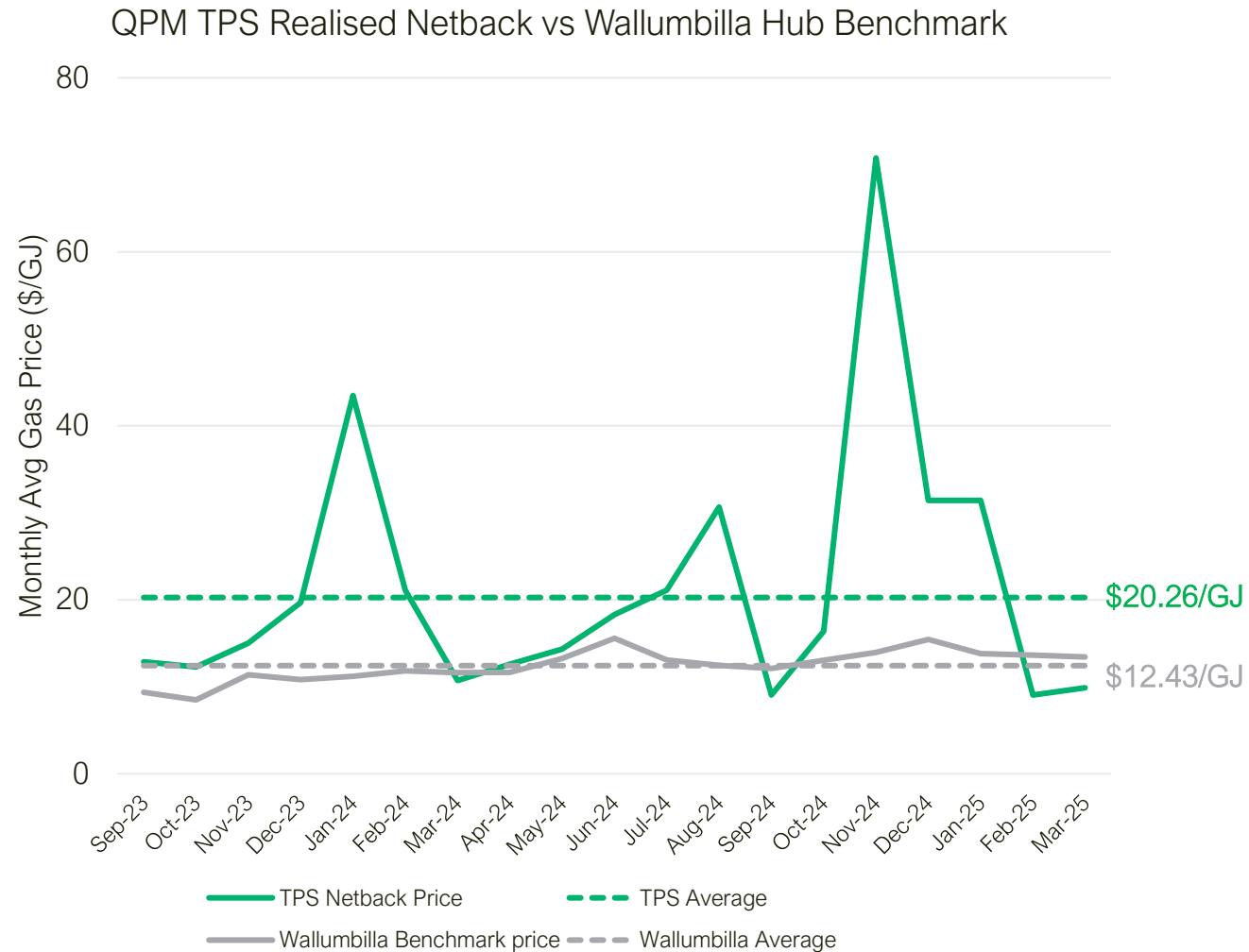


# The challenge...

- QPM's challenge is to accelerate commercialisation of its uncontracted reserve base - at current production of ~10-11PJ / year, QPM has ~40 years of 2P reserve life.
- What options are available?
  1. Additional gas offtake in North Queensland.
  2. A pipeline connection from Moranbah to central and southern gas market networks.
  3. **Development and acquisition of additional electricity generation capacity.**
- While there are opportunities to grow the company's gas sales portfolio, the company's near-term focus is on option 3.
- QPM's experience is that conversion of molecules to electrons delivers significantly higher returns.

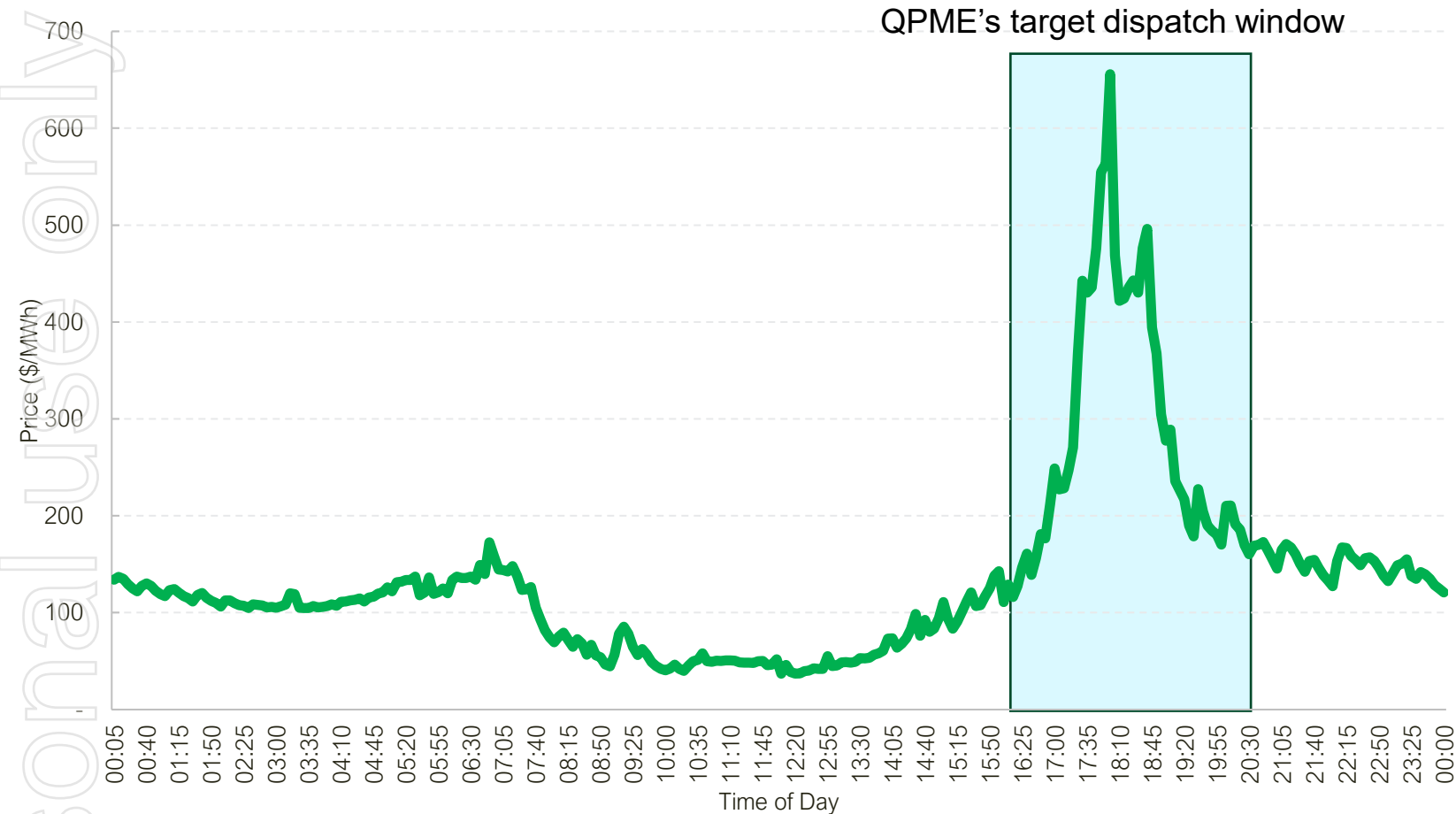
# The economics of molecules to electrons

- QPM has realised an average price of \$20.26/GJ for gas used by TPS to generated electricity since Sep 2023.
- The average Wallumbilla Hub price for the same period was \$12.43/GJ.
- QPM's total electricity revenue of \$90 million compares to \$56.5 million for the same gas volumes at Wallumbilla Hub prices.



# QPM's electricity dispatch strategy

Average Qld Electricity Price per settlement period since 2022



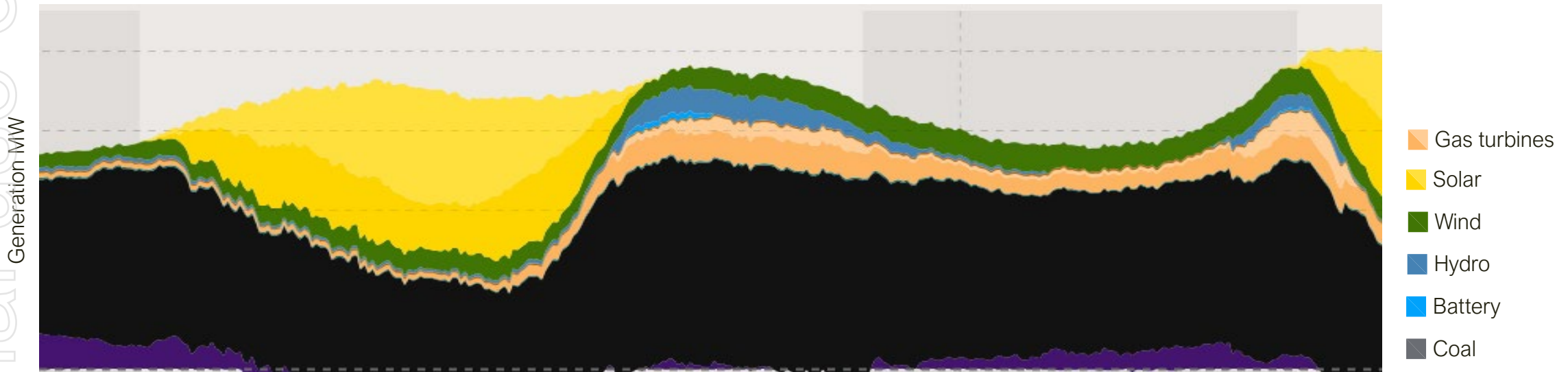
Electricity Price (\$/MWh)	QPME Netback Gas Price <sup>1</sup> (\$/GJ)
100	8
200	16
500	40
1,000	80
10,000	800
17,500	1,400

1. Netback Gas Price, post transmission losses

Source: AEMO

# Queensland electricity pricing part 1....

- Solar dominates generation during the day forcing coal and gas to ramp down, but...
- Towards sunset solar disappears and coal, gas and hydro have to ramp up quickly to meet peak demand



# Queensland electricity pricing part 2.....

- The Queensland grid struggles to meet current peak demand events what happens when a further **2,600MW to 3,000MW of demand** is required by Jan 2030?
- More generation and storage is needed.....

## Source

## Comment

Coal	✗	No new coal generation contemplated in Qld
Solar	✗	No generation at peak demand times
Wind	?	Variable generation, may not coincide with peak demand
Gas	✓	400MW Brigalow 2027, <b>QPM Energy Moranbah</b>
Pumped hydro	✓	250MW Kidston + proposed Borumba?
Batteries	✓	Thousands of MW and MWh needed, but very expensive

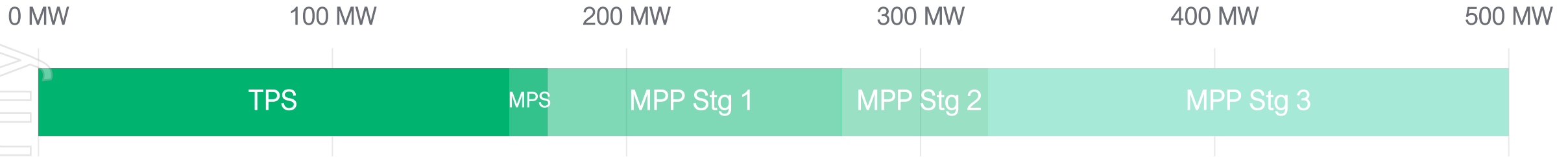
# Implications

Over at least the next 5 years the drivers of the Queensland electricity generation / demand mix is likely to support:

- Continued volatility of the daily price curve with lower daytime pricing and stronger peak demand pricing;
- More frequent extreme price events;
- Increased winter morning peak price events; and
- Stronger overnight pricing.

The era of coal fired generation retirement starts in the 2030s.....

# .....QPM Energy's Strategy



## Existing Generation Assets

### Townsville Power Station (TPS)

- 160MW Gas Turbine
- New agreements with Ratch (Asset Owner) and Palisade (Pipeline Owner) to reduce fixed costs by 83% from 2025 onwards
- Generating into the NEM at peak pricing periods

### Moranbah Power Station (MPS)

- 12.8MW of gas-powered engines recently acquired
- Approximately 3MW used to power the upstream gas operations and 9MW generating into the NEM at peak pricing periods

## Proposed Generation Capacity Development

### Moranbah Power Project (MPP)

- Up to 300MW of gas-powered generation to be situated on QPM's existing site in Moranbah
- To be powered with low spec gas, significantly reducing operating costs
- Project to be rolled out over several stages
- Currently in Front End Engineering and Design (FEED)

# Near term outlook

- TPS overhaul progressing with re-commissioning scheduled in early July 2025.
- New capacity and dispatch contracts for TPS and NQGP commence 1 July 2025, resulting in significant cost reductions and improved financial performance.
- Moranbah Power Project development including engineering, cost estimation, approvals and grid connection application all in progress.
- Coiled tubing unit well work overs and stage 2 drilling programs to commence in the Jun '25 and Dec '25 quarters respectively.
- Continued resource and reserve delineation work.
- Engagement with regional coal mine operators to secure additional mine waste gas supply.

# Company Snapshot

Company Metrics	
Market Capitalisation	A\$110.8m
Debt <sup>1</sup>	\$53.7m
Cash	\$23.8m
Enterprise Value	\$140.7m
Shares Outstanding	2,520.8m
Options Outstanding	177.9m
Performance Rights	104.2m

<sup>1</sup> – Majority relates to Dyno Nobel prepayment facility for development works, which is repaid through future gas deliveries rather than cash

**QPM share price performance**



Source: IRESS

# MGP Project Reserves

Category/Subclass	Gas Reserves <sup>1</sup>			
	Gross (100%)		Net <sup>2</sup>	
	(BCF)	(PJ)	(BCF)	(PJ)
<b>Proved</b>				
<b>Developed Producing</b>	66.8	69.4	64.1	66.7
<b>Developed Non-Producing</b>	0.1	0.2	0.1	0.1
<b>Undeveloped Justified for Development</b>	166.3	172.8	159.6	165.9
<b>Total Proved (1P)</b>	<b>233.2</b>	<b>242.3</b>	<b>223.9</b>	<b>232.7</b>
<b>Probable</b>				
<b>On Production</b>	6.5	6.7	6.2	6.5
<b>Incremental</b>	0.1	0.1	0.1	0.1
<b>Undeveloped</b>	178.8	185.8	171.6	178.4
<b>Total Proved + Probable (2P)</b>	<b>418.6</b>	<b>435.0</b>	<b>401.9</b>	<b>417.6</b>

1. As at 30 April 2025. Totals may not add because of rounding.
2. Net gas reserves are after a 4 percent deduction for shrinkage due to system use gas.

*The estimated proved and probable reserves, evaluated as of 30 April 2025, are contained within granted Petroleum Leases PLs 191, 196, 223 and 224, referred to as the Moranbah Project, located in the Bowen Basin of Queensland, Australia.*

*The volumes included in the estimate are attributable to the coals in the LH seams from the Rangal Coal Measures and the GU, P, GM and GL seams from the Moranbah Coal Measures. Economic analysis was performed only to assess economic viability and determine economic limits for the properties, using price and cost parameters specified by QPM.*

*The estimate was prepared by Benjamin W. Johnson, P.E., Michelle L. Burnham, P.E. and John G. Hattner P.G. in accordance with the definitions and guidelines set forth in the 2018 Petroleum Resources Management System approved by the Society of Petroleum Engineers ("SPE"). These technical persons meet the requirements regarding qualifications, independence, objectivity and confidentiality set forth in the SPE standards. NSAI are independent petroleum engineers, geologists, geophysicists and petrophysicists who do not own an interest in the properties and are not employed on a contingency basis.*