

## Drilling confirms Pranoi as the third gold discovery at Didievi, highlighting immense regional potential

### Highlights

**The Pranoi Prospect, only 11 km north of the Blaffo Guetto MRE, hosts similar shallow, high-grade, open-pittable gold mineralisation.**

**Key results included:**

- **25m at 1.6g/t Au** from 83m including **10m at 2.4g/t Au** and **10m at 1.0g/t Au** from 145m (DDD091)
- **15m at 1.7g/t Au** from 51m (DDD090) including **9m at 2.4g/t Au**
- **9m at 3.8g/t Au** from 109m (DDD088)

**These intercepts are complemented by strong previously reported results, including:**

- **8m at 6.5g/t Au** from 39m (DDD031)
- **9m at 4.1g/t Au** from 52m (DRC009)
- **3m at 7.9g/t Au** from 66m (DDD087)
- **6m at 3.5g/t Au** from 154m (DDD086)
- **3m at 5.6g/t Au** from 24m (DRA289)

The Pranoi Prospect is now confirmed to host continuous mineralisation over 600 metres of strike, with the potential to extend beyond 1.5 kilometres, similar to the 1.8-kilometre strike length of Didievi. The latest drilling results represent the first interception of over 20 metres of gold mineralisation, indicating the presence of a much larger system. Pranoi offers significant upside for defining an economic satellite resource, complementing the high-grade Blaffo Guetto resource and the growing bulk tonnage potential of the Poku Trend.

For personal use only

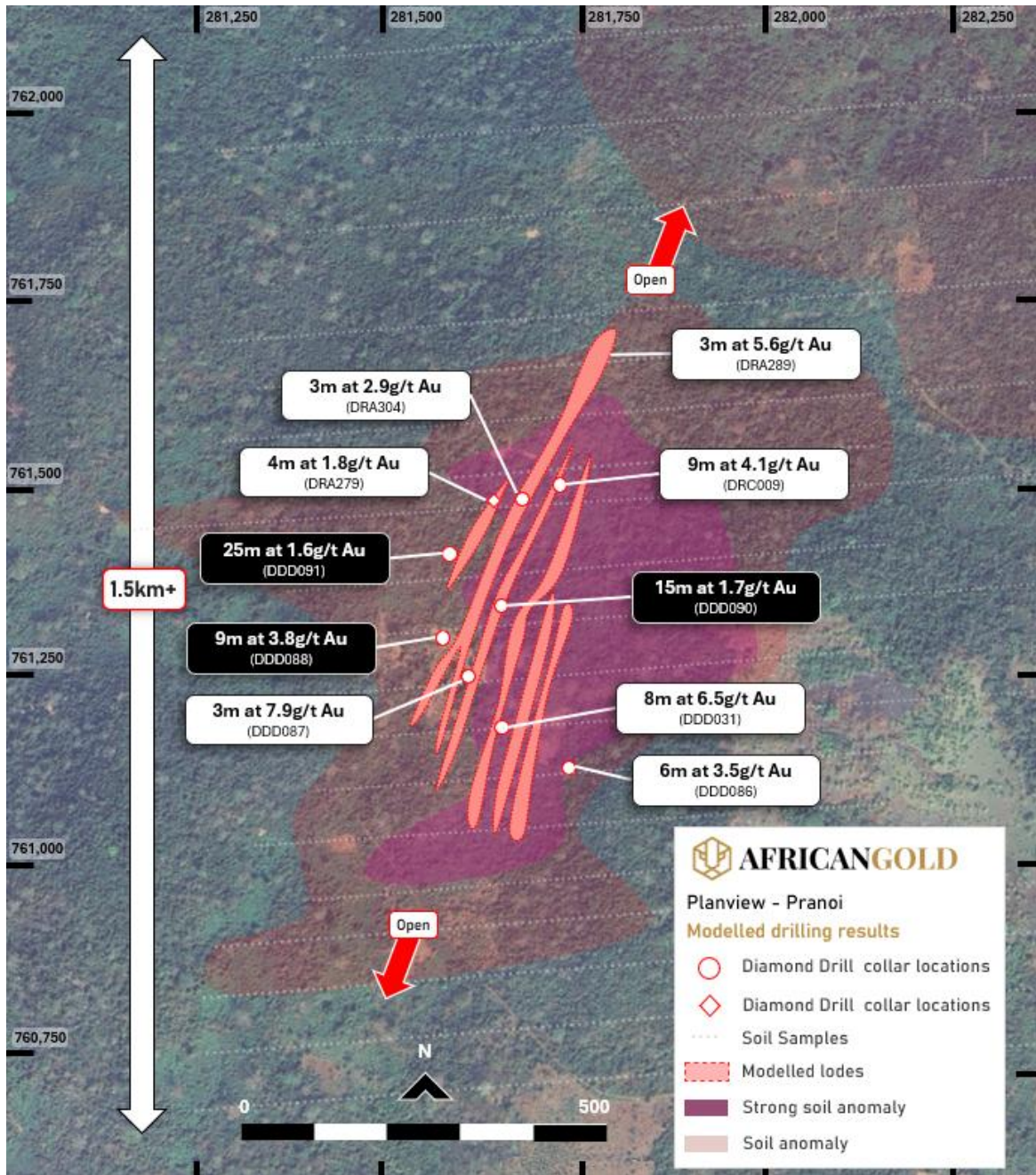


Figure 1: Pranoi notable modelled interceptions, mineralisation and soil anomaly map in plan view.

African Gold Limited (ASX: AIG) ("African Gold" or "the Company") is rapidly advancing its Didievi Gold Project in Côte d'Ivoire, with recent drilling results continuing to highlight the potential for a multi-million-ounce gold system. Drilling has confirmed extensive gold

mineralisation, with zones extending along strike and at depth across several key prospects within the tenement.

As shown in Figure 1, high-grade, continuous mineralisation has now been defined over more than 600 metres of strike at the Pranoi Prospect. Ongoing extensional drilling continues to return strong intercepts, supporting the emergence of a potential satellite deposit. These results are approaching the threshold for resource classification and further enhance the broader development potential of the Didievi Gold Project.

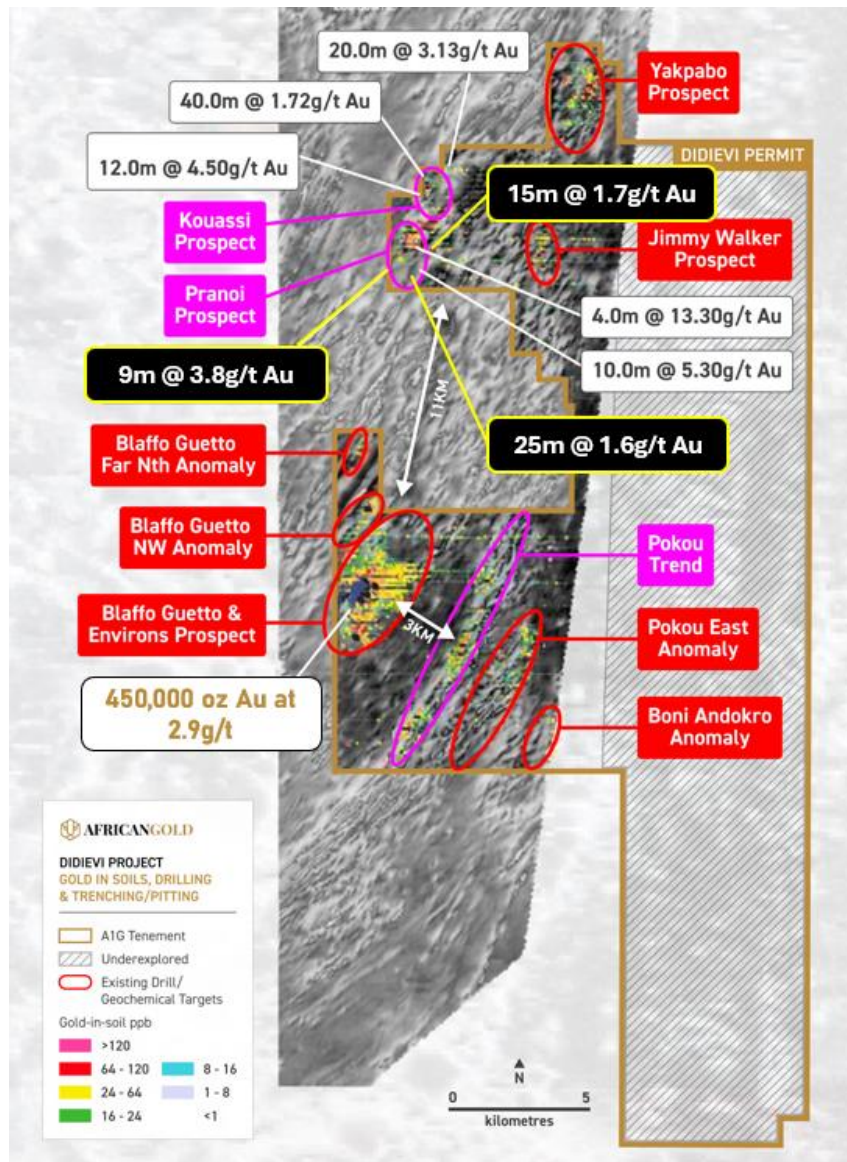


Figure 2: Resource location and regional exploration targets on the Didievi tenement.

The latest results from Pranoi confirm a third significant gold discovery on the Didievi tenement, just 11 km north of the Blaffo Guetto maiden Mineral Resource Estimate<sup>1</sup> ("MRE"). The mineralisation closely mirrors the shallow, high-grade, open-pittable style seen at Blaffo Guetto, reinforcing the Project's regional prospectivity and making it a strong complement to future mine development plans. African Gold is currently progressing a substantial resource update for Blaffo Guetto, scheduled for H2 2025.

African Gold CEO, Adam Oehlman, commented: *"We are extremely encouraged by the confirmation of a third mineralised system on the Didievi tenement. These results continue to validate our belief that Didievi hosts a large, fertile gold system with multiple high-quality targets. With only two of ten regional prospects drilled to date, the scale of the opportunity is exceptional. The satellite deposits we are uncovering would be considered standalone targets for many companies, this level of optionality adds tremendous value to the Blaffo Guetto MRE. We look forward to advancing further exploration and resource development throughout 2025."*

The Company continues its systematic exploration across the tenement with the aim of defining additional resources and unlocking value across this underexplored, highly prospective gold corridor.

This announcement has been authorised for release by the Board of African Gold Ltd.

For further information, please contact:

Mr Adam Oehlman

Chief Executive Officer

E: [admin@african-gold.com](mailto:admin@african-gold.com)

---

<sup>1</sup> Inferred Resource of 4.93Mt at 2.9 g/t gold, representing 452,000oz of gold (using a 1.0 g/t Au cut-off)

## Competent Person's Statements

The information contained in this announcement that relates to new exploration results for the Didievi Project, Cote d'Ivoire, is based on and fairly reflects, information compiled by Dr Marat Abzalov, who is a fellow of the Australasian Institute of Mining and Metallurgy. Dr Abzalov, via his company Massa Geoservices, has sufficient experience which is relevant to the style of mineralisation and type of deposit under consideration and to the activity he is undertaking to qualify as a Competent Person as defined in the 2012 Edition of the 'Australian Code for Reporting of Exploration Results, Mineral Resources and Ore Reserves'. Dr Abzalov consents to the inclusion in this announcement of the matters based on his information on the form and context in which it appears. Dr Abzalov holds shares and options in African Gold Limited.

The mineral resource estimate referred to in this announcement was reported by the Company in accordance with listing rule 5.8 on 30 July 2024. The Company confirms it is not aware of any new information or data that materially affects the mineral resources estimate included in the previous announcement and that all material assumptions and technical parameters underpinning the mineral resource estimate in the previous announcement continue to apply and have not materially changed.

The exploration results referred to in this announcement were reported in accordance with Listing Rule 5.7 on 11 August 2021, 8 September 2021, 7 October 2024, 15 October 2024, 31 March 2025 and 7 April 2025. The Company confirms it is not aware of any new information that materially affects these results.

## Appendix 1: Drill collar details and intercept information

**Table 1: New Pranoi Drill Collar Locations**

Hole ID	Depth (m)	Easting	Northing	RL	Azimuth	Dip
DDD088	160.50	281,312.3	761,299.6	290.0	137	-55
DDD089	161.50	281,399.9	761,353.0	290.0	317	-55
DDD090	176.50	281,399.9	761,352.9	290.0	137	-55
DDD091	171.50	281,337.8	761,419.6	290.0	137	-55

**Table 2: New Significant Intercepts Mineralised (g.e. 0.3g/t) and barren interval**

Hole ID	From (m)	To (m)	Length (m)	Au (g/t)	Explanation
DDD088	10.0	12.0	2.0	0.5	Low-grade halo
DDD088	41.0	87.0	<b>46.0</b>	0.2	Low-grade halo
DDD088	109.0	118.0	<b>9.0</b>	<b>3.8</b>	<b>Gold Lode</b>
DDD089	54.0	64.0	10.0	0.2	Low-grade halo
DDD090	12.0	14.0	2.0	2.5	Low-grade halo
DDD090	51.0	66.0	<b>15.0</b>	<b>1.7</b>	<b>Gold Lode</b>
<i>including</i>	<i>51.0</i>	<i>60.0</i>	<b>9.0</b>	<b>2.4</b>	
DDD091	83.0	108.2	<b>25.2</b>	<b>1.6</b>	<b>Gold Lode</b>
<i>including</i>	<b>83.0</b>	<b>93.0</b>	<b>10.0</b>	<b>2.4</b>	
DDD091	132.0	155.0	<b>23.0</b>	<b>0.6</b>	<b>Gold Lode</b>
<i>including</i>	<b>145.0</b>	<b>155.0</b>	<b>10.0</b>	<b>1.0</b>	

For personal use only

## Appendix 2

### JORC Code, 2012 Edition – Table 3

#### Section 1 – Sampling Techniques and Data

(Criteria in this section apply to all succeeding sections)

Criteria	Explanation	Details of the Reported Project
Sampling techniques	<i>Nature and quality of sampling (eg cut channels, random chips, or specific specialized industry standard measurement tools appropriate to the minerals under investigation, such as down hole gamma sondes, or handheld XRF instruments, etc). These examples should not be taken as limiting the broad meaning of sampling.</i>	<ul style="list-style-type: none"> <li>The new drilling data includes diamond drill core samples collected from the DDD088; DDD089; DDD090 and DDD091 drillholes, recently drilled at the Pranoi prospect of the Didievi lease of the African Gold.</li> <li>These drillholes were drilled in late March and April of 2025 and represents a part of the African Gold's 2024-2025 drilling program constituting of the 10,000m of the diamond core drilling. The program was primarily focused on the resource definition drilling of the Blaffo Guetto deposit but also included testing (i.e. green field exploration) of the several prospective targets within the Didievi lease (ASX, 2020 November 27). The latter includes the reported drillholes, that have been drilled to explore geochemical anomalies at the Pranoi prospect.</li> <li>Total length of these drillholes is 670.0m, and average is 167.5m.</li> </ul>
	<i>Include reference to measures taken to ensure sample representivity and the appropriate calibration of any measurement tools or systems used.</i>	<ul style="list-style-type: none"> <li>The diamond drillcore was orientated, marked, logged, and split in half using a diamond core saw before being sampled. Sample intervals typically 1m, in rare cases e.g. at end of hole &lt;1m.</li> <li>Drilling and sampling procedures are as follows: the diamond core was recovered using a wireline technique and then it was marked on a standard fixed intervals of 1m and to the geological contacts. The marked core was cut in half by a diamond saw, split and sampled.</li> <li>Drilling and sampling match the industry standard practices and quality of the obtained samples were found appropriate for Mineral Resources and Ore Reserves estimation</li> </ul>

For personal use only

For personal use only

	<p><i>Aspects of the determination of mineralisation that are Material to the Public Report.</i></p> <p><i>In cases where 'industry standard' work has been done this would be relatively simple (eg 'reverse circulation drilling was used to obtain 1 m samples from which 3 kg was pulverised to produce a 30 g charge for fire assay'). In other cases more explanation may be required, such as where there is coarse gold that has inherent sampling problems. Unusual commodities or mineralisation types (eg submarine nodules) may warrant disclosure of detailed information.</i></p>	<ul style="list-style-type: none"> <li>• The determination of mineralisation has been made by a combination of geological observations (logging and mapping) in conjunction with assay results from the surface drilling.</li> <li>• Drilling and sampling have been done following best practice standard operating procedures and in good accordance with the industry standards.</li> </ul>
<p><i>Drilling techniques</i></p>	<p><i>Drill type (eg core, reverse circulation, open-hole hammer, rotary air blast, auger, Bangka, sonic, etc) and details (eg core diameter, triple or standard tube, depth of diamond tails, face-sampling bit or other type, whether core is oriented and if so, by what method, etc).</i></p>	<ul style="list-style-type: none"> <li>• The drilling was carried out using the standard recognized techniques and procedures, which includes wireline techniques for retreating the samples from the drillhole.</li> <li>• Most of the diamond core drilling was made using NQ diameter drill bits for drilling the fresh rocks, and the HQ size drill bits for drilling the pre-collar and the weathered rocks (i.e. laterites).</li> <li>• The drilling was oriented. Orientation was made using the REFLEX DOWNHOLE CORE ORIENTATION UNIT. Name of the instrument: REFLEX ACT III RD NTW CORE ORIENTATION KIT REFLEX reference: AURUM15052024_2. Serial numbers: Act32139, Act36243, Act3c1113</li> </ul>

<i>Drill sample recovery</i>	<i>Method of recording and assessing core and chip sample recoveries and results assessed.</i>	<ul style="list-style-type: none"> <li>• Drill core losses were recorded using the linear method, based on comparison of the recovered core length vs nominal length of the drilled interval.</li> <li>• No significant sample losses were noted</li> </ul>
	<i>Measures taken to maximise sample recovery and ensure representative nature of the samples.</i>	<ul style="list-style-type: none"> <li>• Core recovery was supervised by field geologists and drillers were requested to adjust drilling parameters where this was found appropriate to do.</li> </ul>
	<i>Whether a relationship exists between sample recovery and grade and whether sample bias may have occurred due to preferential loss/gain of fine/coarse material.</i>	<ul style="list-style-type: none"> <li>• No significant sampling issues were noted, and it is therefore considered that both sample recovery and quality is adequate for the Mineral Resource and Ore Reserves estimation.</li> </ul>
<i>Logging</i>	<i>Whether core and chip samples have been geologically and geotechnically logged to a level of detail to support appropriate Mineral Resource estimation, mining studies and metallurgical studies.</i>	<ul style="list-style-type: none"> <li>• All drill samples were geologically logged by experienced qualified geologists and this included recording the drilled rocks, alteration style and composition, RQD measurements providing the geotechnical information and structural measurements of the rock contacts, bedding and metamorphic structures.</li> <li>• The level of geological and geotechnical logging was adequate to support Mineral Resource estimation and applicable for the mining and metallurgical studies.</li> </ul>
	<i>Whether logging is qualitative or quantitative in nature. Core (or costean, channel, etc) photography.</i>	<ul style="list-style-type: none"> <li>• Geological logging used a standardized logging system. It was essentially qualitative and descriptive in nature.</li> <li>• Geotechnical logging, mainly recording the RQD, was semi-quantitative.</li> <li>• Structural measurements (Dip and Azi) were quantitative and made using a special device colloquially referred as a “rocket launcher”.</li> </ul>
	<i>The total length and percentage of the relevant intersections logged.</i>	<ul style="list-style-type: none"> <li>• The total length of the reported drillholes is 670.0m.</li> <li>• 100% of the drillholes, including mineralised intervals and the barren host rocks, were logged.</li> </ul>

For personal use only

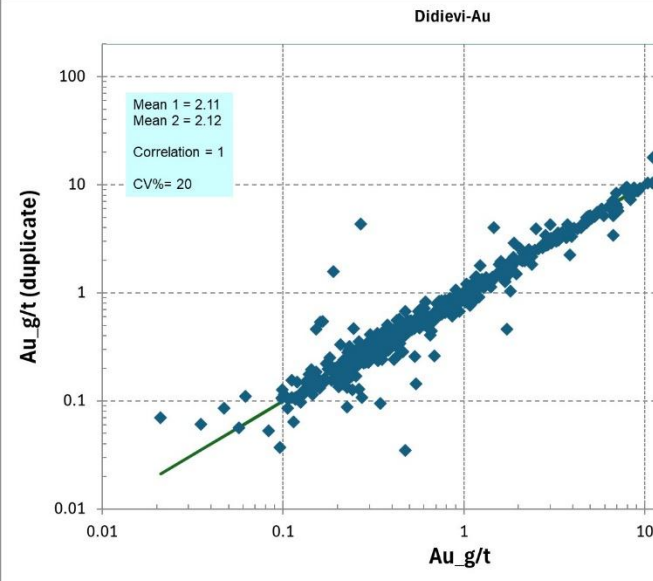
For personal use only

Sub-sampling techniques and sample preparation	If core, whether cut or sawn and whether quarter, half or all core taken	<ul style="list-style-type: none"> <li>Drill core was split in half using a diamond core saw.</li> </ul>																
	If non-core, whether riffled, tube sampled, rotary split, etc and whether sampled wet or dry.	<ul style="list-style-type: none"> <li>Not applicable. Current drilling included only the diamond drill core drilling.</li> </ul>																
	For all sample types, the nature, quality and appropriateness of the sample preparation technique.	<ul style="list-style-type: none"> <li>Sample preparation was made at the MSA-LABS in Yamoussoukro, Ivory Coast. The preparation procedure consists of crushing the entire sample (2- 3 kg) to 1mm at 80% pass, and then splitting the crushed material, collecting a c.300g aliquot for assaying for Au using the Photon assay instrument.</li> <li>Samples selected for multispectral analysis (ICP-OES for multi – elements) for pulverized to 75 microns</li> </ul> <table border="1" style="width: 100%; border-collapse: collapse;"> <thead> <tr> <th colspan="2" style="text-align: center;">SAMPLE PREPARATION</th> </tr> <tr> <th style="text-align: left;">METHOD CODE</th> <th style="text-align: left;">DESCRIPTION</th> </tr> </thead> <tbody> <tr> <td>ADM-300</td> <td>Single charge for each batch of sample</td> </tr> <tr> <td>CPA-Jar</td> <td>Unit charge per CPA Jar</td> </tr> <tr> <td>CRU-999</td> <td>Crush to client specification</td> </tr> <tr> <td>PLG-100</td> <td>Log Sample - No preparation required</td> </tr> <tr> <td>PPU-530</td> <td>Pulverize 1000g to 85% -75 µm</td> </tr> <tr> <td>SPL-425</td> <td>Split 1000g material (Rotary Split)</td> </tr> </tbody> </table> <p style="margin-left: 20px;">CRU-999: Crush entire Sample to 1mm at 80% passing</p>	SAMPLE PREPARATION		METHOD CODE	DESCRIPTION	ADM-300	Single charge for each batch of sample	CPA-Jar	Unit charge per CPA Jar	CRU-999	Crush to client specification	PLG-100	Log Sample - No preparation required	PPU-530	Pulverize 1000g to 85% -75 µm	SPL-425	Split 1000g material (Rotary Split)
	SAMPLE PREPARATION																	
METHOD CODE	DESCRIPTION																	
ADM-300	Single charge for each batch of sample																	
CPA-Jar	Unit charge per CPA Jar																	
CRU-999	Crush to client specification																	
PLG-100	Log Sample - No preparation required																	
PPU-530	Pulverize 1000g to 85% -75 µm																	
SPL-425	Split 1000g material (Rotary Split)																	
Quality control procedures adopted for all sub-sampling stages to maximise representivity of samples.	<ul style="list-style-type: none"> <li>Laboratories used sieving tests to assure particle size is matching to the certified parameters of the sample preparation protocol. This analysis is conducted routinely by the laboratory personnel and represents operational practice of the laboratory.</li> <li>The sieving test is performed in each batch to ensure the correct grind size is achieved.</li> </ul>																	

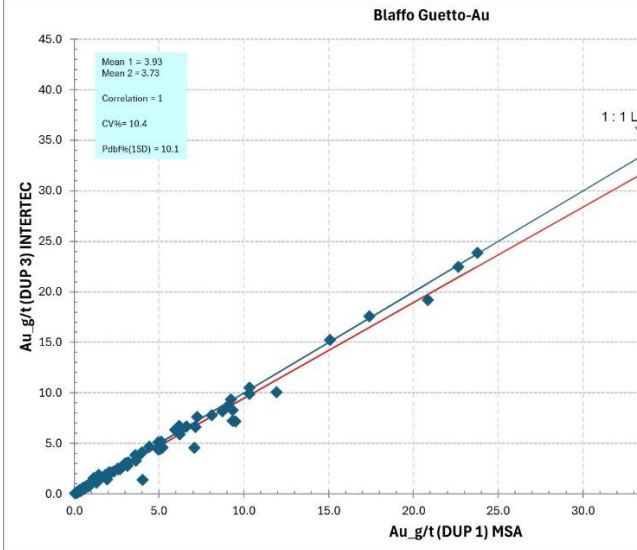
For personal use only

	<p><i>Measures taken to ensure that the sampling is representative of the in situ material collected, including for instance results for field duplicate/second-half sampling.</i></p>	<ul style="list-style-type: none"> <li>• Duplicates of the coarse rejects (-1mm material after first crush) were systematically collected and analysed.</li> <li>• Results of the duplicate analysis show a good repeatability of the original sample assays</li> </ul>
	<p><i>Whether sample sizes are appropriate to the grain size of the material being sampled.</i></p>	<ul style="list-style-type: none"> <li>• The drillhole samples are 2-3 kg which is appropriate for obtaining representative samples of the Blaffo Guetto orogenic gold deposit. This conclusion is based on geological and petrographic studies of the deposit and was confirmed during Mineral Resource estimation in 2024.</li> </ul>
<p><i>Quality of assay data and laboratory tests</i></p>	<p><i>The nature, quality and appropriateness of the assaying and laboratory procedures used and whether the technique is considered partial or total.</i></p>	<ul style="list-style-type: none"> <li>• Drillhole samples were assayed for Au by Photon instrument. This is a relatively new method which at present is broadly used in the mining industry and has become a modern standard of the gold mining industry.</li> <li>• The method uses 300g aliquot which is superior to a conventional fire-assay method that uses 50g aliquots.</li> <li>• This is a total recovery technique.</li> </ul>
	<p><i>For geophysical tools, spectrometers, handheld XRF instruments, etc, the parameters used in determining the analysis including instrument make and model, reading times, calibrations factors applied and their derivation, etc.</i></p>	<ul style="list-style-type: none"> <li>• Not applicable – no such tools used.</li> </ul>
	<p><i>Nature of quality control procedures adopted (eg standards, blanks, duplicates, external laboratory checks) and whether acceptable levels of accuracy (ie lack of bias) and precision have been established.</i></p>	<ul style="list-style-type: none"> <li>• QAQC procedures used by the African Gold Ltd at this drilling included systematic analysis of the coarse duplicates (-1mm), assay of the standards (CRM) and blanks. Duplicate assays results show a good repeatability of the sample assays (Fig. 1.6-1). Precision error is less than 20% which matches the best industry practices</li> </ul>

For personal use only

		 <p><i>Fig 1.6. Scatter-diagram of the duplicates vs. original samples. The diagram encompasses all duplicate samples collected in the drillholes drilled at the Didievi lease after MRE2024. The database currently contains 453 pairs of the sample-duplicate. CV% presents a samples precision estimated using methodology explained in Abzalov (2008).</i></p> <ul style="list-style-type: none"> <li>• QAQC results of the CRM and blanks did not reveal issues that could affect the quality of the sample assay results. The obtained QAQC results have allowed to conclude that the sample assays quality is sufficient for Mineral Resource and Ore Reserves estimation.</li> </ul>
Verification of sampling and assaying	The verification of significant intersections by either independent or alternative company personnel.	<ul style="list-style-type: none"> <li>• The verification of significant intersections used by the African Gold at this drilling campaign includes systematic assaying of the sample duplicates (-1mm material) for the all samples that have returned the high-grade results.</li> <li>• The significant intersections were also verified by assaying the duplicate samples in the external laboratory. This verification was made by delivering duplicate samples to the Intertek Genalysis laboratory, based in Perth, Australia. Results (Fig. 1.7)</li> </ul>

For personal use only

		 <p>Fig 1.7. Scatter-diagram of the duplicates analysed in the external laboratory (Intertek Genalysis, Perth, Australia) vs. original samples analysed at the MSA laboratory (Yamoussoukro, Cote d'Ivoire). The diagram contains 97 pairs of samples. CV% presents a samples precision estimated using methodology explained in Abzalov (2008).</p> <ul style="list-style-type: none"> <li>• Lower grade mineralisation (&gt;0.3 g/t Au) also is verified by analysing the coarse reject duplicates</li> </ul>
	<p>The use of twinned holes.</p>	<ul style="list-style-type: none"> <li>• Not applicable – no twinned holes.</li> </ul>
	<p>Documentation of primary data, data entry procedures, data verification, data storage (physical and electronic) protocols.</p>	<ul style="list-style-type: none"> <li>• The logging procedure consisted of direct entering data into a portable (laptop) computer which then has been electronically transferred to a database administrator for the data review and uploading into the database.</li> <li>• Assay results were received from the laboratory by email, reviewed by database administrator and uploaded into the company database.</li> <li>• African Gold Ltd uses relational database built using the Microsoft ACCESS</li> </ul>
	<p>Discuss any adjustment to assay data.</p>	<ul style="list-style-type: none"> <li>• Not applicable – no adjustments were made to the data</li> </ul>

For personal use only

<i>Location of data points</i>	<i>Accuracy and quality of surveys used to locate drill holes (collar and down-hole surveys), trenches, mine workings and other locations used in Mineral Resource estimation.</i>	<ul style="list-style-type: none"> <li>All drill collars were originally located with a handheld GPS and after drilling were resurveyed using a handheld GPS</li> </ul>
	<i>Specification of the grid system used.</i>	<ul style="list-style-type: none"> <li>All data location is in UTM WGS84 Zone30N grid system</li> </ul>
	<i>Quality and adequacy of topographic control.</i>	<ul style="list-style-type: none"> <li>Digital topography was generated using the handled GPS measurements of the drillhole collars, including the 2025 drilling by African Gold and data of the previous owners.</li> <li>The available topographic GPS measurements are considered sufficient for estimation of the Inferred Resources, however, due to their limited amount and quality, the further exploration of the prospect and estimation resources of the higher categories, Indicated and Measured, will require a detailed DGPS survey and/or LiDAR topographic survey.</li> </ul>
<i>Data spacing and distribution</i>	<i>Data spacing for reporting of Exploration Results.</i>	<ul style="list-style-type: none"> <li>Not applicable for the drill holes being reported</li> </ul>
	<i>Whether the data spacing and distribution is sufficient to establish the degree of geological and grade continuity appropriate for the Mineral Resource and Ore Reserve estimation procedure(s) and classifications applied.</i>	
	<i>Whether sample compositing has been applied.</i>	<ul style="list-style-type: none"> <li>Drill core was sampled at the regular intervals, 0.5m to 1m of the mineralised zones, and 1m of the wall rocks.</li> <li>No physical compositing of the samples was used.</li> </ul>

For personal use only

<i>Orientation of data in relation to geological structure</i>	<i>Whether the orientation of sampling achieves unbiased sampling of possible structures and the extent to which this is known, considering the deposit type.</i>	<ul style="list-style-type: none"> <li>Based on the observations made in the exploration trenches, outcrops and the diamond drill core the strike of mineralisation is approximately 40° NNE and it is dipping steeply toward south-east which.</li> <li>However, due to limited amount of the historic data the current drilling program has used a “scissor” style of the drillholes orientation that has allowed to obtain a definitive orientation of the gold bearing structures</li> <li>Results of the “scissor” drilling, coupled with the geological observations made at the outcrops has allowed to conclude that that orientation of the current drilling is suitable for achieving the unbiased sampling.</li> </ul>
	<i>If the relationship between the drilling orientation and the orientation of key mineralised structures is considered to have introduced a sampling bias, this should be assessed and reported if material.</i>	<ul style="list-style-type: none"> <li>Orientation of the drillhole intersections is adequate for 3D geological modelling and cannot be a source of the sampling biases</li> </ul>
<i>Sample security</i>	<i>The measures taken to ensure sample security</i>	<ul style="list-style-type: none"> <li>African Gold Ltd personnel have guarded samples during drilling and sampling.</li> <li>The collected and safely stored on-site samples have been delivered by the African Gold Ltd personnel to the MSA laboratory.</li> <li>After samples have been removed from the site, they were securely stored in the laboratory facilities.</li> </ul>
<i>Audits or reviews</i>	<i>The results of any audits or reviews of sampling techniques and data.</i>	<ul style="list-style-type: none"> <li>The MSA laboratory was visited in December 2024 and February 2025 by Company personnel, including A. Oehlman (CEO of the AIG), D. Sie (Project geologist), and Dr M. Abzalov (consultant, CP of the Project).</li> <li>Laboratory procedures were reviewed by Dr M. Abzalov and found to match the mining industry’s best practices.</li> </ul>

## Section 2 – Reporting of Exploration Results

(Criteria in this section apply to all succeeding sections)


Criteria	Explanation	Details of the Reported Project																																										
Mineral tenement and land tenure status	Type, reference name/number, location and ownership including agreements or material issues with third parties such as joint ventures, partnerships, overriding royalties, native title interests, historical sites, wilderness or national park and environmental settings.	<ul style="list-style-type: none"> <li>African Gold has entered into a number of agreements with companies – details are provided in ASX releases dated 4 July 2019; 5 September 2019 and 27 November 2021. The results contained in this announcement are from the Didievi Permit.</li> <li>Details of the permits are shown in Table 2.1-1</li> </ul> <p><b>Table 2.1:</b> Permits obtained and applied by the African Gold Ltd for Gold exploration and mining in Cote d'Ivoire</p> <table border="1"> <thead> <tr> <th>Permit</th> <th>Permit type</th> <th>Date Granted</th> <th>Area (km<sup>2</sup>)</th> <th>Duration</th> </tr> </thead> <tbody> <tr> <td>Didievi</td> <td rowspan="8">Permis de recherche (Gold)</td> <td>18 Nov 2019</td> <td>391</td> <td>4 + 3+ 3 years</td> </tr> <tr> <td>Agboville</td> <td>25 Oct 2017</td> <td>395</td> <td>4 + 3+ 3 years</td> </tr> <tr> <td>Sikensi</td> <td>19 Oct 2016</td> <td>397</td> <td>4 + 3+ 3 years</td> </tr> <tr> <td>Konahiri Nord</td> <td>12 Jan 2022</td> <td>391</td> <td>4 + 3+ 3 years</td> </tr> <tr> <td>Konahiri Sud</td> <td>Application TBA</td> <td>255</td> <td>4 + 3+ 3 years</td> </tr> <tr> <td>Koyekro</td> <td>Application TBA</td> <td>290</td> <td>4 + 3+ 3 years</td> </tr> <tr> <td>Azaguire</td> <td>Application TBA</td> <td>397</td> <td>4 + 3+ 3 years</td> </tr> <tr> <td>Gomon</td> <td>Application TBA</td> <td>212</td> <td>4 + 3+ 3 years</td> </tr> </tbody> </table>					Permit	Permit type	Date Granted	Area (km <sup>2</sup> )	Duration	Didievi	Permis de recherche (Gold)	18 Nov 2019	391	4 + 3+ 3 years	Agboville	25 Oct 2017	395	4 + 3+ 3 years	Sikensi	19 Oct 2016	397	4 + 3+ 3 years	Konahiri Nord	12 Jan 2022	391	4 + 3+ 3 years	Konahiri Sud	Application TBA	255	4 + 3+ 3 years	Koyekro	Application TBA	290	4 + 3+ 3 years	Azaguire	Application TBA	397	4 + 3+ 3 years	Gomon	Application TBA	212	4 + 3+ 3 years
		Permit	Permit type	Date Granted	Area (km <sup>2</sup> )	Duration																																						
		Didievi	Permis de recherche (Gold)	18 Nov 2019	391	4 + 3+ 3 years																																						
		Agboville		25 Oct 2017	395	4 + 3+ 3 years																																						
		Sikensi		19 Oct 2016	397	4 + 3+ 3 years																																						
		Konahiri Nord		12 Jan 2022	391	4 + 3+ 3 years																																						
		Konahiri Sud		Application TBA	255	4 + 3+ 3 years																																						
		Koyekro		Application TBA	290	4 + 3+ 3 years																																						
		Azaguire		Application TBA	397	4 + 3+ 3 years																																						
		Gomon		Application TBA	212	4 + 3+ 3 years																																						
<ul style="list-style-type: none"> <li>There are no known issues affecting the security of title or impediments to operating in the area.</li> </ul>																																												
Exploration done by other parties	Acknowledgment and appraisal of exploration by other parties.	<p>Details of exploration by the previous groups have been reported to the ASX in 4 July 2019; 5 September 2019, 27 November 2020 and 7 December 2021.</p> <p>This is briefly summarised here.</p> <p><b>Didievi Permit – Cote d'Ivoire:</b></p>																																										

For personal use only

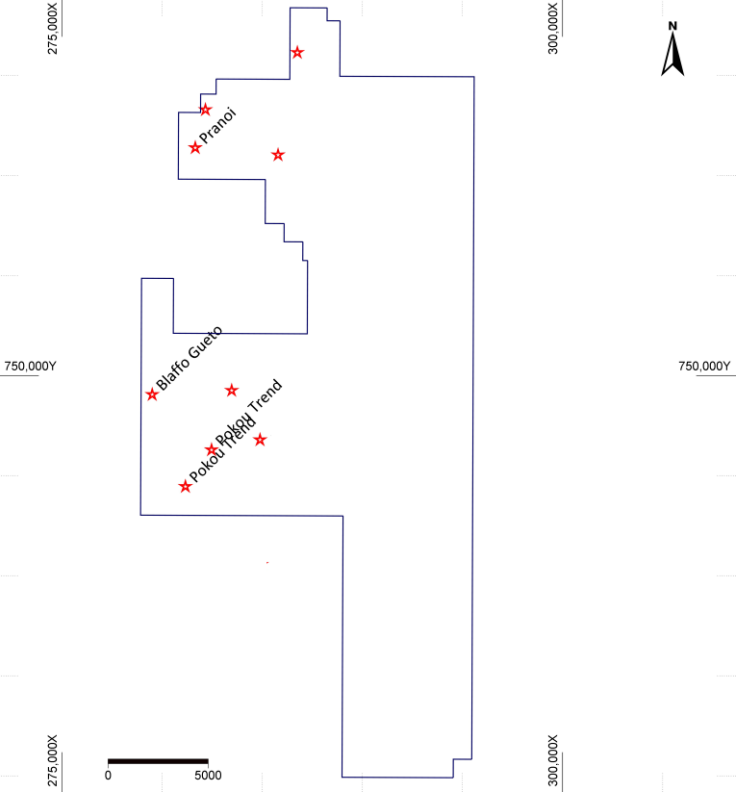
For personal use only

		<ul style="list-style-type: none"> <li>Regional surveys by Glencore and Equigold and then by Lihir and Newcrest include geological mapping, surface geochemical sampling, airborne magnetic and radiometric data and remote sensing data. This was done during 2006 and 2012 and included several exploration campaigns, which led to discovery new prospects, including Pranoi, Koluasi and Pokou trend.</li> <li>At Pranoi, a total of 73 RAB (2,368m) were drilled on 7 traverses over 600m strike length and followed up by 7 RC holes (940m). Impressive shallow broad RAB intercepts of 12m @ 5.60g/t Au from 24m; 15.0m @ 1.74g/t Au from 0m; 11.0m @ 1.38g/t Au from 21m and 8.0m @ 4.35g/t Au from 0m when followed up by RC returned 13.0m @ 2.65g/t Au from 8m; 3.0m @ 3.40g/t Au from 11m &amp; 10m @ 1.33g/t from 41m in the same hole.</li> <li>At the Poku trend the soil Au anomalies were further explored by excavating trenches, that has revealed presence of the broad mineralised zones, including 14m @ 0.4g/t Au defined in the trench 22_TR09</li> </ul>
<i>Geology</i>	<i>Deposit type, geological setting and style of mineralisation.</i>	<ul style="list-style-type: none"> <li>In Côte d'Ivoire – the area under consideration is situated within the central portion of the Oumé-Fetekro Birimian greenstone belt. The belt is striking North-East to South-West direction. These belts belong to the Proterozoic basement in the Baoulé-Mossi domain of the West African Craton (WAC) formed between 2.2 and 1.9 Ga. The belt is almost 300 km long and 40 to 5km width extends from south of Dabakala (north of the belt) to Divo (south of the belt). Around the parallel 7°, it is divided in two parts.</li> <li>Gold mineralisation of the Didievi lease is situated in the Oumé-Hire portion of the belt. The supracrustal geology of this greenstone belt, that is present within the Didievi lease comprised of the shales, sandstone, including wacke and quartzites, intercalated with conglomerates aligned NE-SW. The sedimentary sequence intruded by the different mafic intrusions and the felsic porphyries. All rocks are metamorphosed at the conditions of the greenschist facies of the regional metamorphism.</li> <li>Gold lodes are hosted in the intensely deformed rocks, commonly representing the brittle and ductile shear zones (Fig. 2.3 )</li> </ul>

For personal use only

		 <p>Fig. 2.3: Outcrop of the intensely foliated flysch sequence represented by a narrow, 2-3cm thick, sandstones intercalated with siltstones. Pranoi prospect.</p>
<p><i>Drill hole Information</i></p>	<p><i>A summary of all information material to the understanding of the exploration results including a tabulation of the following information for all Material drill holes:</i></p>	<ul style="list-style-type: none"> <li>• Details of the drillhole information available at the Didievi lease have been reported to the ASX previously, including:                     <ul style="list-style-type: none"> <li>African Gold Ltd – ASX, 2023, 17 October</li> <li>African Gold Ltd – ASX, 2022, 18 October</li> <li>African Gold Ltd – ASX, 2021, 7 December</li> <li>African Gold Ltd – ASX, 2020, 27 November</li> </ul> </li> <li>• After completion of the Mineral Resource estimation, drilling has been resumed in the late 2024 and currently continues. In total, 19 new drillholes have been drilled and reported to the ASX, including:                     <ul style="list-style-type: none"> <li>African Gold Ltd – ASX, 2025, 30 January</li> <li>African Gold Ltd – ASX, 2025, 1 February</li> <li>African Gold Ltd – ASX, 2025, 2 February</li> <li>African Gold Ltd – ASX, 2025, 3 February</li> </ul> </li> </ul> <p>Drill hole details for the results reported in this announcement are set out in Appendices 1 and 2.</p>

For personal use only

	<p><i>Easting and Northing of the drill hole collar.</i></p>	<p>The reported drilling was made at the Pranoi prospect located at the northern part of the African Gold’s Didievi lease. Location of the Pranoi prospect is shown on the map (Fig. 2.4). Other prospects presented at the Didievi lease, including the Blaffo Guetto deposit and the Poku Trend, are shown for the reference.</p>
	<p><i>Elevation or RL (Reduced Level – elevation above sea level in metres) of the drill hole collar.</i></p>	
	<p><i>Dip and azimuth of the hole.</i></p>	<p>Fig.2.4-1: map of the Didievi lease showing the gold prospects (denoted by the red stars).</p> <p>The new drilling data, including coordinates of the drillhole collars, dip and azimuth of drilling and length of the drillholes are presented in Table 2.4-1</p> <p><b>Table 2.4-1: Location and length of the drillholes. Coordinates – UTM WGS84, zone 40 North</b></p>

For personal use only

Hole_ID	Depth (m)	EAST	NORTH	RL	Azi	Dip
<b>Pranoi</b>						
DDD088	160.50	281,312.3	761,299.6	290.0	137	-55
DDD089	161.50	281,399.9	761,353.0	290.0	317	-55
DDD090	176.50	281,399.9	761,352.9	290.0	137	-55
DDD091	171.50	281,337.8	761,419.6	290.0	137	-55
total (m):		670.0				
average depth (m):		167.5				

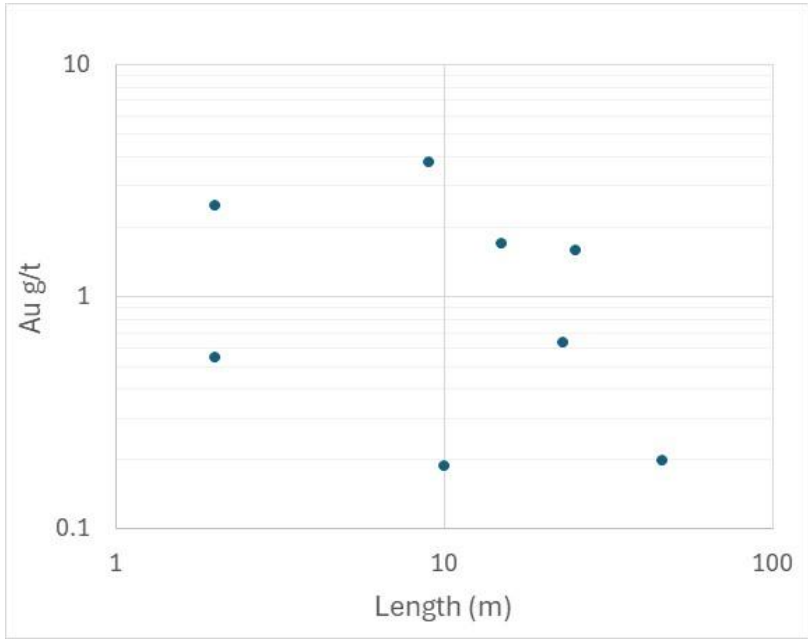
  

Hole_ID	FROM	TO	LENGTH	Au_g/t	EAST	NORTH	RL	Explanation
<b>Pranoi</b>								
DDD088	10.0	12.0	2.0	0.5	281316.6	761295.0	281.0	low-grade halo
DDD088	41.0	87.0	46.0	0.2	281337.3	761272.8	237.6	low-grade halo
DDD088	109.0	118.0	9.0	3.8	281356.6	761252.0	197.0	Gold Lode
DDD089	54.0	64.0	10.0	0.2	281376.8	761377.7	241.7	low-grade halo
DDD090	12.0	14.0	2.0	2.5	281405.0	761347.5	279.4	low-grade halo
DDD090	51.0	66.0	15.0	1.7	281422.7	761328.5	242.2	Gold Lode
including	51.0	60.0	9.0	2.4				
DDD091	83.0	108.2	25.2	1.6	281375.1	761379.7	211.9	Gold Lode
including	83.0	93.0	10.0	2.4				
DDD091	132.0	155.0	23.0	0.6	281393.9	761359.4	172.5	Gold Lode
including	145.0	155.0	10.0	1.0				

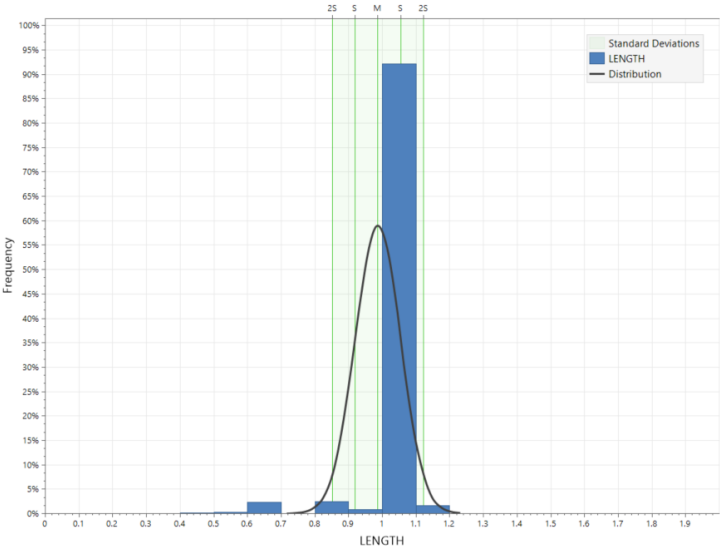
  

<i>Down hole length and interception depth</i>	<p><b>Table 2.4 – 2: Gold lodes defined using 0.5 g/t Au as lower cut-off. Surrounding low-grade mineralisation and the barren rocks are shown for completeness of the reported drillhole data. Coordinates – UTM WGS84, zone 40 North</b></p>
<i>Hole length.</i>	<ul style="list-style-type: none"> <li>Total length of the drillholes reported in this ASX release is 670.0m. The length of the drillholes is in the range of 160.5m – 176.5m. Average length is 167.5m (Table 2.4-1).</li> </ul>
<ul style="list-style-type: none"> <li>If the exclusion of this information is justified on the basis that the information is not Material and this exclusion does not detract from the</li> </ul>	<ul style="list-style-type: none"> <li>Not applicable - all relevant information is included in the current report</li> </ul>

For personal use only

	<p>understanding of the report, the Competent Person should clearly explain why this is the case.</p>																			
<p>Data aggregation methods</p>	<ul style="list-style-type: none"> <li>In reporting Exploration Results, weighting averaging techniques, maximum and/or minimum grade truncations (eg cutting of high grades) and cut-off grades are usually Material and should be stated.</li> </ul>	<ul style="list-style-type: none"> <li>Gold mineralisation intersected by the reported drillholes is presented on the diagram (Fig. 2.5a) depicting the grade and thickness of the intersected gold lodes and their low-grade haloes.</li> <li>The average grade of the intersections was estimated using length weighted average technique.</li> <li>Length was estimated as the down the drillhole length of samples, without conversion to the true thickness</li> </ul> <div data-bbox="630 1037 1433 1671" data-label="Figure">  <table border="1"> <caption>Data points from Fig. 2.5a</caption> <thead> <tr> <th>Length (m)</th> <th>Au g/t</th> </tr> </thead> <tbody> <tr> <td>~2</td> <td>~0.6</td> </tr> <tr> <td>~2</td> <td>~2.5</td> </tr> <tr> <td>~10</td> <td>~0.2</td> </tr> <tr> <td>~10</td> <td>~4.0</td> </tr> <tr> <td>~20</td> <td>~1.8</td> </tr> <tr> <td>~30</td> <td>~0.7</td> </tr> <tr> <td>~30</td> <td>~1.5</td> </tr> <tr> <td>~50</td> <td>~0.2</td> </tr> </tbody> </table> </div> <p>Fig. 2.5a: Grade and length of the Mineralised interceptions (includes low grade halo) of the drillholes DDD088-DDD091 presented in the Table 2.4 – 2.</p>	Length (m)	Au g/t	~2	~0.6	~2	~2.5	~10	~0.2	~10	~4.0	~20	~1.8	~30	~0.7	~30	~1.5	~50	~0.2
Length (m)	Au g/t																			
~2	~0.6																			
~2	~2.5																			
~10	~0.2																			
~10	~4.0																			
~20	~1.8																			
~30	~0.7																			
~30	~1.5																			
~50	~0.2																			

For personal use only

	<p>Where aggregate intercepts incorporate short lengths of high grade results and longer lengths of low grade results, the procedure used for such aggregation should be stated and some typical examples of such aggregations should be shown in detail.</p>	<ul style="list-style-type: none"> <li>Not applicable. All samples in these drillholes are approximately 1m long.</li> </ul>  <p>Fig. 2.5b: Histogram of the samples length, drillholes DDD088 – DDD091.</p>
	<p>The assumptions used for any reporting of metal equivalent values should be clearly stated.</p>	<ul style="list-style-type: none"> <li>Not applicable. Only gold grade is reported</li> </ul>
<p>Relationship between mineralisation widths and intercept lengths</p>	<p>These relationships are particularly important in the reporting of Exploration Results.</p>	<ul style="list-style-type: none"> <li>Gold lodes are dipping steeply and close to vertical, therefore the downhole length of mineralisation exceeds the actual thickness</li> </ul>

For personal use only

	<p><i>If the geometry of the mineralisation with respect to the drill hole angle is known, its nature should be reported.</i></p>	
	<p><i>If it is not known and only the down hole lengths are reported, there should be a clear statement to this effect (eg 'down hole length, true width not known').</i></p>	<ul style="list-style-type: none"> <li>• True width not known.</li> <li>• Mineralised zones (gold lodes) were interpreted on the cross-sections and intersections represents the down hole length. Grade is the sample length weighted average grade.</li> </ul>
<p><i>Diagrams</i></p>	<p><i>Appropriate maps and sections (with scales) and tabulations of intercepts should be included for any significant discovery being reported These should include, but not be limited to a plan view of drill hole collar locations and</i></p>	<ul style="list-style-type: none"> <li>• The appropriate maps and the sections are present in the body of this announcement.</li> </ul>

For personal use only

	<i>appropriate sectional views.</i>	
<i>Balanced reporting</i>	<i>Where comprehensive reporting of all Exploration Results is not practicable, representative reporting of both low and high grades and/or widths should be practiced to avoid misleading reporting of Exploration Results.</i>	<ul style="list-style-type: none"> <li>The current announcement reports results of the regional exploration drilling in the Didievi lease of the African Gold Ltd and presents the data collected at the Pranoi prospect.</li> <li>The presentation is made as a balanced report. The report includes information of the drillholes, drilled after the past report (ASX 2025 03 February) and was planned for exploration of the targets outside of the Blaffo Guetto deposit.</li> </ul>
<i>Other substantive exploration data</i>	<i>Other exploration data, if meaningful and material, should be reported including (but not limited to): geological observations; geophysical survey results; geochemical survey results;</i>	<ul style="list-style-type: none"> <li>All available information has been reported</li> </ul>

For personal use only

	<p><i>bulk samples – size and method of treatment; metallurgical test results; bulk density, groundwater, geotechnical and rock characteristics ; potential deleterious or contaminating substances.</i></p>	
Further work	<p><i>The nature and scale of planned further work (eg tests for lateral extensions or depth extensions or large-scale step-out drilling).</i></p>	<ul style="list-style-type: none"> <li>African Gold Ltd is planning to continue exploration drilling. Approximately 10,000m of diamond drill core drilling will be drilled in 2025 for exploration of the Didievi Permit.</li> </ul>
	<p><i>Diagrams clearly highlighting the areas of possible extensions, including the main geological interpretations and future drilling areas, provided this information is</i></p>	<ul style="list-style-type: none"> <li>Diagrams are presented in the sections 1 and 2 of the JORC TABLE 1 and also in the body of the report</li> </ul>

For personal use only

	<i>not commercially sensitive.</i>	
--	--	--