

BOARD & MANAGEMENT

Chris Sutherland – *Chair*
Duncan Chessell – *MD, CEO*
Peter McIntyre – *NED*
Greg Hall – *NED*
Dr Tony Belperio – *NED*
Jarek Kopias – *Co Sec, CFO*

Technical Advisory Panel

John Main – *Chair*
Dr Tony Belperio
Duncan Chessell

Expert Consultants

Dr Paul Kitto
Professor David Selley
Professor Bruce Schaefer
Dr David Rawlings
Michael Rodda
Theo Aravanis
Neil Hughes
AMC Mining Group

CAPITAL STRUCTURE

Ordinary Shares:
Issued 119M

Options:
23M

Performance Rights:
3M

CONTACT

Adelaide Office
21 Sydenham Road
Norwood SA 5067
Australia

info@coppersearch.com.au
www.coppersearch.com.au

GEOPHYSICS UPDATE, BYROCK PROJECT, NSW

Results and Next Steps

Positive results from IP geophysics surveys have identified a significant chargeability anomaly at CS03, indicative of sulphides at 120m depth.

- Next steps include ground truthing, mapping, geochemistry and close spaced surface geophysics surveys to confirm drill target(s)

Positive results from the airborne magnetic survey have identified six new “pipe-like” high-mag response prospects as potential Cu-Au porphyries.

- Next steps include infill gravity data acquisition and mapping
- The gravity survey will be used to distinguish felsic intrusions from mafic intrusions, with felsic intrusions considered more prospective
- Gravity surveys are a cost-effective tool to filter these six new targets

Passive seismic and IP results on Cu-Au porphyry targets T47 and T55

- T47 Prospect: passive seismic confirmed the shallow 65m depth and was effectively tested using IP geophysics, but no sulphides are interpreted
- T55 Prospect: located 80km east of the main project area has >200m of black soil cover over the large-scale Cu-Au porphyry target T55 and the IP survey was ineffective due to the conductive black soil cover. A passive seismic survey confirmed crystalline basement at 300m depth
- A gravity survey is planned to validate the high-reward T55 drill target

Managing Director Duncan Chessell’s Comments

“The first phase of field recon and geophysics surveys to validate drill targets has been completed at the newly acquired Byrock Project in the Lachlan Fold Belt, NSW.

We were initially drawn to the project due to the number of targets and different mineralisation styles identified. We are pleased that the exploration methods deployed have proven effective, particularly over the shallow covered areas. Importantly, we believe we can improve the confidence in the drill targets with another round of targeted, cost-effective boots on the ground mapping, geophysics and soils programs. We’re also encouraged to see that our robust evaluation process, leveraging technology and the expertise of the team, has been effective in ruling out several targets prior to committing funds to drilling programs, leaving only targets that align with Copper Search’s criteria for economic scale potential. In addition, Professor David Selley and Dr Paul Kitto have now completed a valuable desktop tectonostratigraphic review of the region to enable our team to see the bigger picture of the structural controls and sharpen the focus our next phase of exploration efforts.

Where targets of sufficient scale and reward occur deeper, such as the Cu-Au Porphyry T55 Prospect (~300m depth) – we intend to de-risk exploration and apply for NSW Government co-funded grants.

The project remains open for orogenic gold, Cu-Au porphyry and Cobar-style mineralisation. I am pleased with the progress as we work through the validation stage ahead of planned drilling of the best targets later in the year.”

The Byrock Project, NSW - Australia

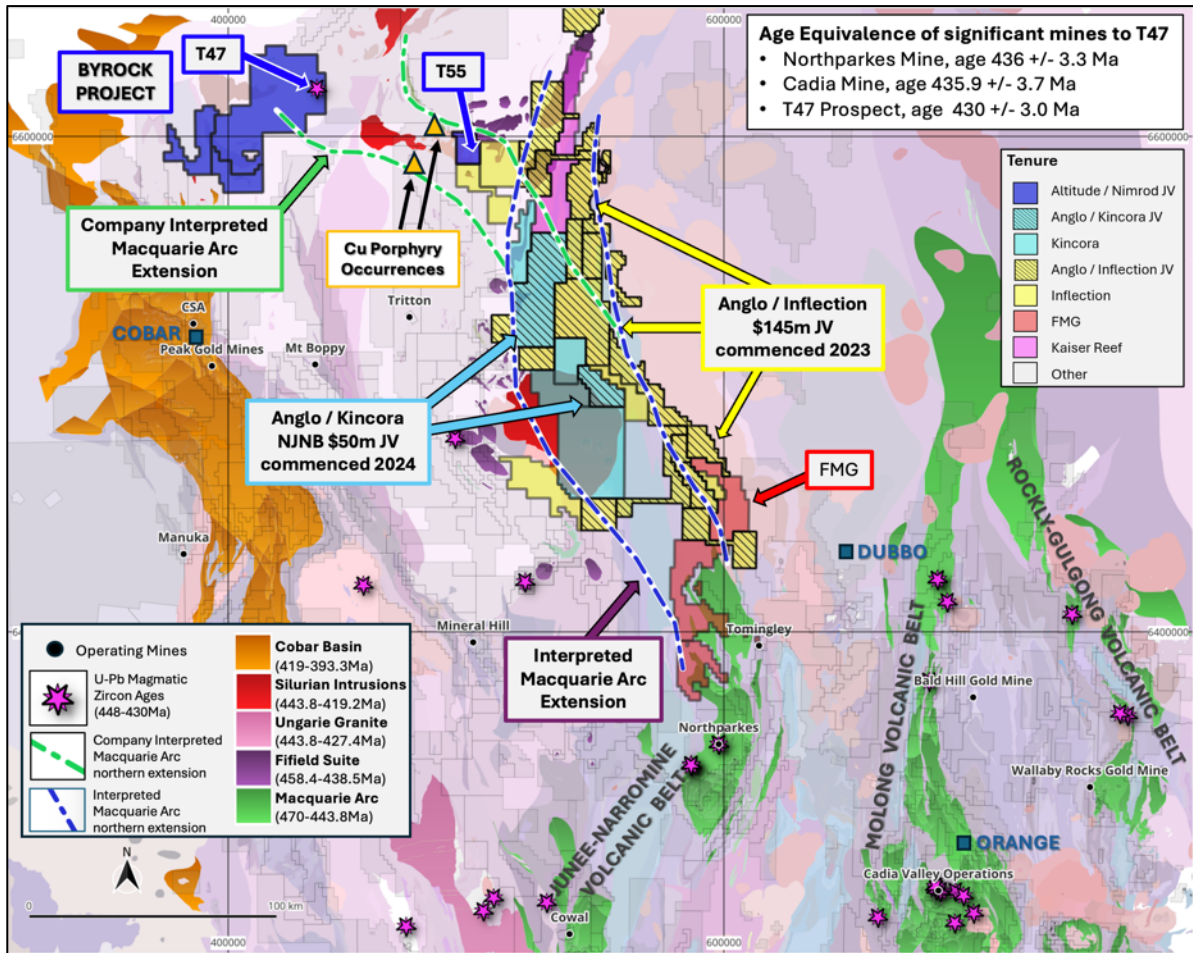


Figure 1 Location and Regional Tenement Map. Neighbours, operating mines, geochronology dates (magmatic U/Pb) of mineralisation events of significant regional deposits - background image solid geology. The Company's new interpretation** is the Macquarie Arc extends under cover to the northwest of the conventional North-South corridor across to the Byrock Project.

The Byrock Project covers 1,932km² located 80 km northeast of Bourke, NSW. The region is part of the Lachlan Fold Belt, which includes the Macquarie Arc and Cobar Basin – both of which contain operating mines. **The Macquarie Arc is Australia's premier porphyry copper-gold province**, hosting several world-class mines, such as Newcrest Mining's Cadia mine, Evolution Mining's Northparkes and Cowal mines. The Cadia Valley porphyry gold-copper deposits *contain 32Moz of gold (Au) and 7.5Mt of copper (Cu) and only began modern production in 1998. Recent multi-year \$195m exploration commitments from AngloGold Ashanti with Kincora Copper (14/6/2023 CSE: AUCU) and Inflection Resources (28/5/2024 ASX: KCC) covering the ground between Northparkes and the Byrock Project further highlights the opportunity of the Byrock Project for Copper Search investors.

Sources: Geological Survey NSW (GSNSW) geochronology & geology databases and NSW Company ASX announcements, websites and annual reports. *Cadia Valley Operations: (indicated) 2,900 Mt @ 0.26% Cu, 0.35 g/t Au, (probable) 1,300 Mt @ 0.29% Cu, 0.44 g/t Au for 7,540,000 tonnes of contained copper and 32,633,000 contained ounces of gold, Government **Copper and Gold Summaries NSW** (Dec 2021) for **Copper & Gold**. (Au = Gold, Ag = Silver, Cu = Copper, Fe = Iron, K = Potassium, Pb = Lead, U = Uranium, Zn = Zinc). ** interpretation of geophysics, age dating and rock types present in drill core at the T47 Prospect, drill hole 78KD; and two GSNSW recorded porphyry occurrences indicated.

Prospect Location Map - Byrock Project, NSW

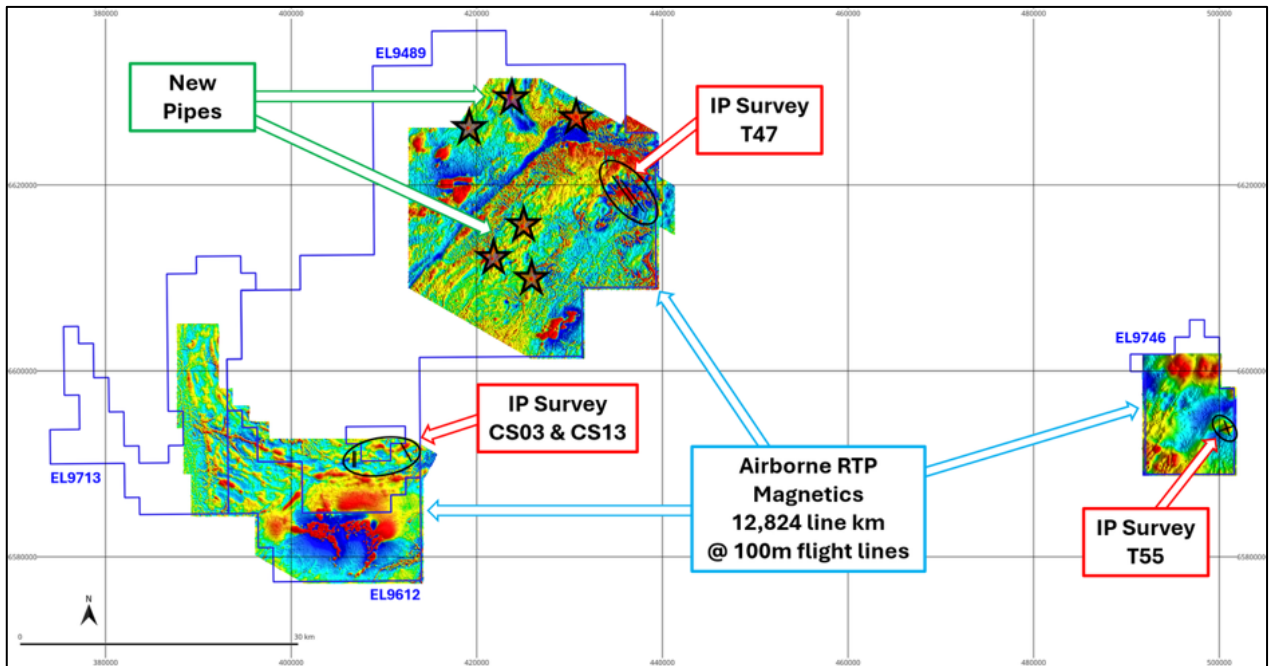


Figure 2 Prospect Location Map with new magnetic data as background image with location (black lines) of new IP surveys collected over targets CS03, CS13, T55 and T47.

Detailed Results CS03 “Cobar-Style” Prospect

Positive results from IP geophysics survey have identified a significant chargeability anomaly at CS03 which is indicative of sulphides at 120m depth.

- The IP chargeability anomaly remains open along-strike to the SW and NE
- Next steps proposed include ground truthing, mapping, geochemistry, and close spaced surface geophysics surveys to confirm drill target(s)

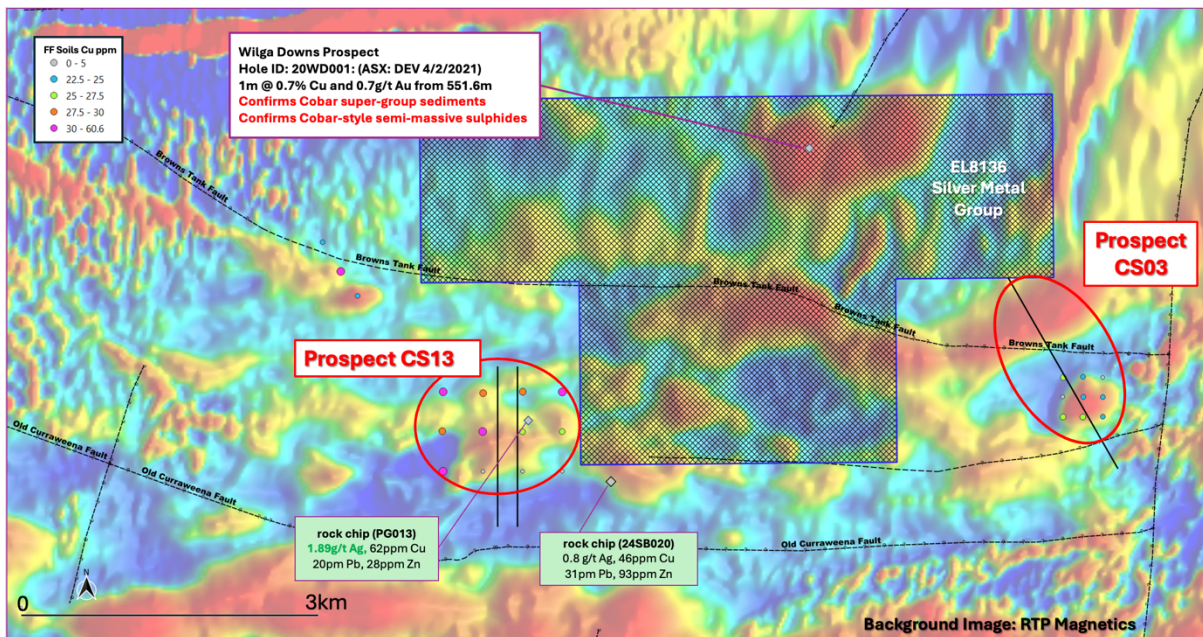


Figure 3 New IP lines on map (black N-S lines at CS113 and NW-SE at CS03) over new magnetic survey merged with historical data (background image). Rock chip data previously reported 11 February 2025.

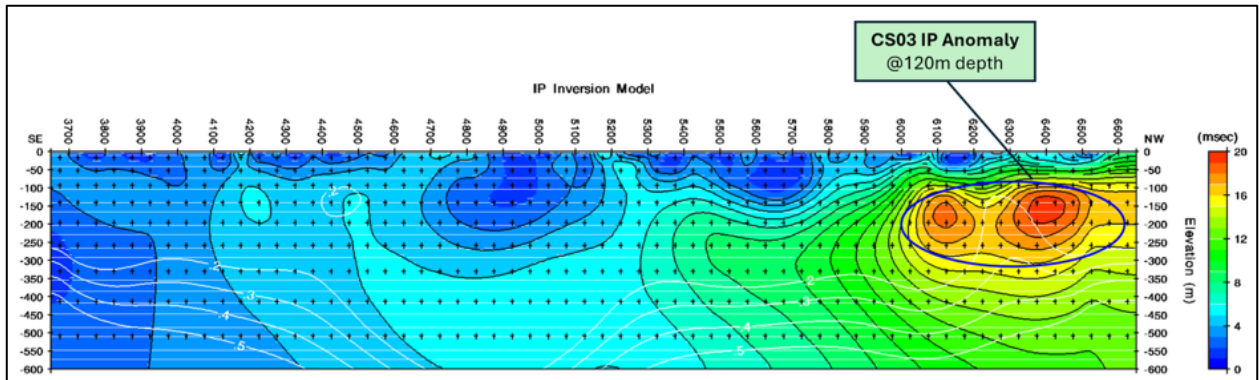


Figure 4 IP Cross Section through Prospect CS03 with 20msec chargeability anomaly (blue polygon) open along strike to the southwest and northeast.

Cobar-style polymetallic Au-Cu-Ag-Pb-Zn deposits background information

The Cobar-style deposit typically comprises of multiple ore lenses (pipes), which have lateral and vertical metal zonation both within individual loads and across adjacent lodes (Lawrie & Hinman, 1998). Long-hole open stoping mining has been the preferred method, given the vertical continuity (>400m) and high grades of the orebodies. The total sulphides tend to be significantly lower in Cu-Au orebodies relative to Ag-Pb-Zn lodes and deposit size varies from ~5Mt (e.g. Peak Au-Cu) to ~30Mt (e.g. Elura Pb-Zn-Ag) (Lawrie & Hinman, 1998).

Lawrie & Hinman (1998) point out that some lodes have discrete bullseye magnetic anomalies given the presence of magnetite and pyrrhotite in some deposits and that local gravity, EM and IP anomalies can be associated with near surface orebodies.

Authorised for release by the board of Copper Search Limited.

For further information, please get in touch.

Duncan Chessell
 Managing Director
duncan@coppersearch.com.au
 Copper Search Limited
 +61 414 804 055

Julian Harvey
 Investor Relations
jharvey@coppersearch.com.au
 Copper Search Limited
 +61 404 897 584

JORC CODE (2012) Information

General comments

This report includes data from NSW Government websites and includes historical reports referenced in the drill collar file which is public data and state-owned merged geophysics data. The Company confirms that it is unaware of any new information or data that materially affects the information included in these announcements or historical reports.

References to neighbouring projects have been obtained from company websites, reports and/or ASX announcements referenced in the body of this report and/or listed below.

Related ASX, CSE, TSXV Announcements

- 4/2/2021 (ASX: DEV) - Encouraging initial drill results at Wilga Downs Project
- 14/6/2023 (CSE: AUCU) - Definitive Exploration Agreement
- 28/5/2024 (ASX: KCC) - AngloGold Ashanti to earn-in to the NJNB Project
- 11/2/2025 (ASX: CUS) – Pipeline of Copper-Gold Targets Secured – Byrock Project

Abbreviations

Au = Gold, Ag = Silver, Cu = Copper, K = Potassium, Pb = Lead, U = Uranium, Zn = Zinc
ppm = parts per million, ppb = parts per billion, g/t = grams per tonne, % = percentage
NSI = No Significant Interval
oz = ounce, t = tonne, m = metre, km = kilometre

Competent Person Statement

The information in this report related to Exploration Results is based on data compiled by Ms Christine Lawley, a member of the Australian Institute of Geoscientists (MAIG) and a member of the Australasian Institute of Mining and Metallurgy (MAusIMM). Ms Lawley is indirectly employed by Copper Search as a full-time employee of the project partner Nimrod Resources Limited, operator of the Byrock Project. Ms Lawley holds Shares, in Copper Search Limited. Ms Lawley has sufficient experience relevant to the style of mineralisation and type of deposit under consideration and to the activity being undertaken to qualify as a Competent Person as defined in the 2012 Edition of the 'Australian Code for Reporting of Exploration Results, Mineral Resources and Ore Reserves. Ms Lawley consents to the inclusion in the report of the matters based on her information in the form it appears.

The Company confirms that it is unaware of any new information or data that materially affects the information included in cross referenced announcements. The Company confirms that the form and context in which the Competent Person's findings are presented have not been materially modified from the original announcements.

New combined air magnetic data for the Byrock Project

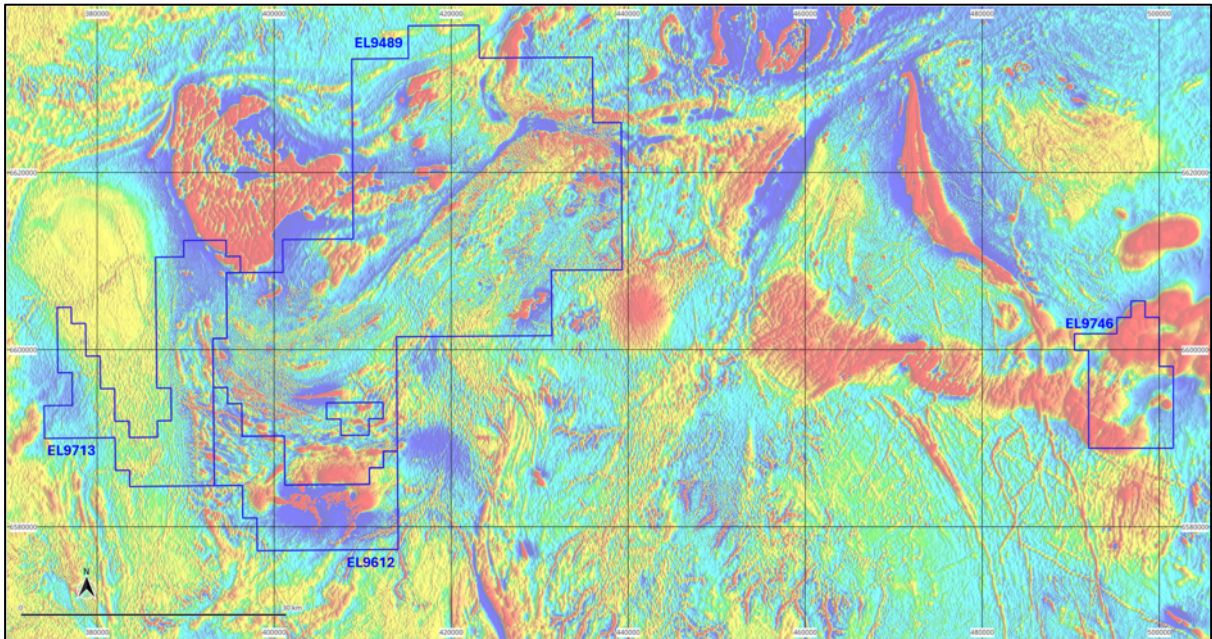


Figure 5 Combined RTP Magnetics over Byrock Project merged with public open file data and new Air magnetic survey 2025

Passive Seismic Surveys

Target	Depth to crystalline basement	Notes
T47	65m	Historical drilling 78KD2 reviewed for shear wave velocity calculations.
T55	300m	Regional water bores reviewed for shear wave velocity calculations.

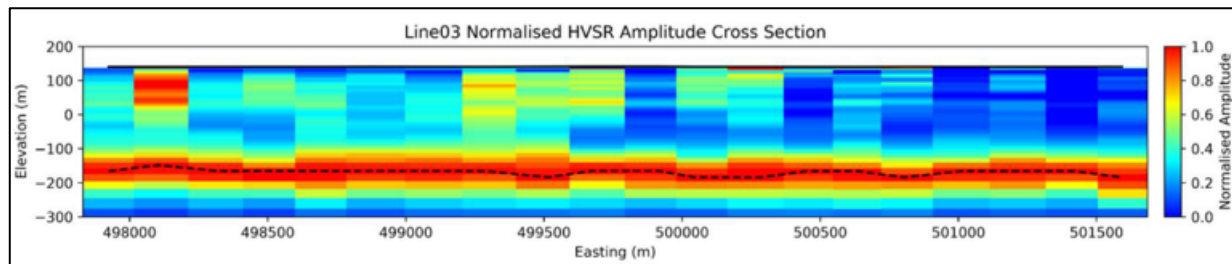


Figure 6 Passive seismic cross section for T55 Prospect. Black dashed line represents the interpreted acoustic bedrock (V_s 650m/s). Depth to interpreted crystalline basement is 300m. Traversed Line Direction SWW to ENE.

JORC Code, 2012 Edition – Table 1 report template

Section 1 Sampling Techniques and Data

(Criteria in this section apply to all succeeding sections.)

Criteria	JORC Code explanation	Commentary
Sampling techniques	<ul style="list-style-type: none"> Nature and quality of sampling (eg cut channels, random chips, or specific specialised industry standard measurement tools appropriate to the minerals under investigation, such as down hole gamma sondes, or handheld XRF instruments, etc). These examples should not be taken as limiting the broad meaning of sampling. 	<ul style="list-style-type: none"> This Report is related to results from air magnetics, passive seismic and IP geophysical surveys only: this section is not relevant as no drilling results are reported.
	<ul style="list-style-type: none"> Include reference to measures taken to ensure sample representivity and the appropriate calibration of any measurement tools or systems used. 	<ul style="list-style-type: none"> This Report is related to results from air magnetics, passive seismic and IP geophysical surveys only: this section is not relevant as no drilling results are reported.
	<ul style="list-style-type: none"> Aspects of the determination of mineralisation that are Material to the Public Report. 	<ul style="list-style-type: none"> This Report is related to results from air magnetics, passive seismic and IP geophysical surveys only: this section is not relevant as no drilling results are reported.
	<ul style="list-style-type: none"> In cases where ‘industry standard’ work has been done this would be relatively simple (eg ‘reverse circulation drilling was used to obtain 1 m samples from which 3 kg was pulverised to produce a 30 g charge for fire assay’). In other cases more explanation may be required, such as where there is coarse gold that has inherent sampling problems. Unusual commodities or mineralisation types (eg submarine nodules) may warrant disclosure of detailed information. 	<ul style="list-style-type: none"> This Report is related to results from air magnetics, passive seismic and IP geophysical surveys only: this section is not relevant as no drilling results are reported.
Drilling techniques	<ul style="list-style-type: none"> Drill type (eg core, reverse circulation, open-hole hammer, rotary air blast, auger, Bangka, sonic, etc) and details (eg core diameter, triple or standard tube, depth of diamond tails, face-sampling bit or other type, whether core is oriented and if so, by what method, etc). 	<ul style="list-style-type: none"> This Report is related to results from air magnetics, passive seismic and IP geophysical surveys only: this section is not relevant as no drilling results are reported.
Drill sample recovery	<ul style="list-style-type: none"> Method of recording and assessing core and chip sample recoveries and results assessed. 	<ul style="list-style-type: none"> This Report is related to results from air magnetics, passive seismic and IP geophysical surveys only: this section is not relevant as no drilling results are reported.
	<ul style="list-style-type: none"> Measures taken to maximise sample recovery and ensure representative nature of the samples. 	<ul style="list-style-type: none"> This Report is related to results from air magnetics, passive seismic and IP geophysical surveys only: this section is not relevant as no drilling results are reported.

Criteria	JORC Code explanation	Commentary
	<ul style="list-style-type: none"> Whether a relationship exists between sample recovery and grade and whether sample bias may have occurred due to preferential loss/gain of fine/coarse material. 	<ul style="list-style-type: none"> This Report is related to results from air magnetics, passive seismic and IP geophysical surveys only: this section is not relevant as no drilling results are reported.
Logging	<ul style="list-style-type: none"> Whether core and chip samples have been geologically and geotechnically logged to a level of detail to support appropriate Mineral Resource estimation, mining studies and metallurgical studies. 	<ul style="list-style-type: none"> This Report is related to results from air magnetics, passive seismic and IP geophysical surveys only: this section is not relevant as no drilling results are reported.
	<ul style="list-style-type: none"> Whether logging is qualitative or quantitative in nature. Core (or costean, channel, etc) photography. 	<ul style="list-style-type: none"> This Report is related to results from air magnetics, passive seismic and IP geophysical surveys only: this section is not relevant as no drilling results are reported.
	<ul style="list-style-type: none"> The total length and percentage of the relevant intersections logged. 	<p>This Report is related to results from air magnetics, passive seismic and IP geophysical surveys only: this section is not relevant as no drilling results are reported.</p>
Sub-sampling techniques and sample preparation	<ul style="list-style-type: none"> If core, whether cut or sawn and whether quarter, half or all core taken. 	<p>This Report is related to results from air magnetics, passive seismic and IP geophysical surveys only: this section is not relevant as no drilling results are reported.</p>
	<ul style="list-style-type: none"> If non-core, whether riffled, tube sampled, rotary split, etc and whether sampled wet or dry. 	<p>This Report is related to results from air magnetics, passive seismic and IP geophysical surveys only: this section is not relevant as no drilling results are reported.</p>
	<ul style="list-style-type: none"> For all sample types, the nature, quality and appropriateness of the sample preparation technique. 	<p>This Report is related to results from air magnetics, passive seismic and IP geophysical surveys only: this section is not relevant as no drilling results are reported.</p>
	<ul style="list-style-type: none"> Quality control procedures adopted for all sub-sampling stages to maximise representivity of samples. 	<p>This Report is related to results from air magnetics, passive seismic and IP geophysical surveys only: this section is not relevant as no drilling results are reported.</p>
	<ul style="list-style-type: none"> Measures taken to ensure that the sampling is representative of the in situ material collected, including for instance results for field duplicate/second-half sampling. 	<p>This Report is related to results from air magnetics, passive seismic and IP geophysical surveys only: this section is not relevant as no drilling results are reported.</p>
	<ul style="list-style-type: none"> Whether sample sizes are appropriate to the grain size of the material being sampled. 	<p>This Report is related to results from air magnetics, passive seismic and IP geophysical surveys only: this section is not relevant as no drilling results are reported.</p>

personal use only

Criteria	JORC Code explanation	Commentary
Quality of assay data and laboratory tests	<ul style="list-style-type: none"> The nature, quality and appropriateness of the assaying and laboratory procedures used and whether the technique is considered partial or total. 	This Report is related to results from air magnetics, passive seismic and IP geophysical surveys only: this section is not relevant as no drilling results are reported.
	<ul style="list-style-type: none"> For geophysical tools, spectrometers, handheld XRF instruments, etc, the parameters used in determining the analysis including instrument make and model, reading times, calibrations factors applied and their derivation, etc. 	This Report is related to results from air magnetics, passive seismic and IP geophysical surveys only: this section is not relevant as no drilling results are reported.
	<ul style="list-style-type: none"> Nature of quality control procedures adopted (eg standards, blanks, duplicates, external laboratory checks) and whether acceptable levels of accuracy (ie lack of bias) and precision have been established. 	This Report is related to results from air magnetics, passive seismic and IP geophysical surveys only: this section is not relevant as no drilling results are reported.
Verification of sampling and assaying	<ul style="list-style-type: none"> The verification of significant intersections by either independent or alternative company personnel. 	<ul style="list-style-type: none"> This Report is related to results from air magnetics, passive seismic and IP geophysical surveys only: this section is not relevant as no drilling results are reported.
	<ul style="list-style-type: none"> The use of twinned holes. 	<ul style="list-style-type: none"> This Report is related to results from air magnetics, passive seismic and IP geophysical surveys only: this section is not relevant as no drilling results are reported.
	<ul style="list-style-type: none"> Documentation of primary data, data entry procedures, data verification, data storage (physical and electronic) protocols. 	This Report is related to results from air magnetics, passive seismic and IP geophysical surveys only: this section is not relevant as no drilling results are reported.
	<ul style="list-style-type: none"> Discuss any adjustment to assay data. 	This Report is related to results from air magnetics, passive seismic and IP geophysical surveys only: this section is not relevant as no drilling results are reported.
Location of data points	<ul style="list-style-type: none"> Accuracy and quality of surveys used to locate drill holes (collar and down-hole surveys), trenches, mine workings and other locations used in Mineral Resource estimation. 	<p>n/a as no MRE is estimated.</p> <p>This Report is related to results from air magnetics, passive seismic and IP geophysical surveys only: this section is not relevant as no drilling results are reported.</p>
	<ul style="list-style-type: none"> Specification of the grid system used. 	<ul style="list-style-type: none"> The IP Survey was completed using GDA2020 Zone 55, passive seismic and airborne magnetics was completed using GDA94 Zone 55
	<ul style="list-style-type: none"> Quality and adequacy of topographic control. 	<ul style="list-style-type: none"> RLs have been calculated using MagSpec Digital Elevation Model (DEM) with 0.4m accuracy. This is adequate for the early stage of

Criteria	JORC Code explanation	Commentary
		exploration contemplated.
Data spacing and distribution	<ul style="list-style-type: none"> <i>Data spacing for reporting of Exploration Results.</i> 	<ul style="list-style-type: none"> Nimrod: No drilling is reported. Nimrod: Soils surveys have been deployed over specific prospects at first pass spacing, slight extensions to the grids would be useful to establish background levels of specific elements. However, the data is useful as a first pass. <u>Historical work:</u> The spacing over some prospects is useful as a first pass, but large areas remain completely untested.
	<ul style="list-style-type: none"> <i>Whether the data spacing and distribution is sufficient to establish the degree of geological and grade continuity appropriate for the Mineral Resource and Ore Reserve estimation procedure(s) and classifications applied.</i> 	<ul style="list-style-type: none"> No, there is insufficient data to support geological and grade continuity to support an MRE - no MRE is declared. This Report is related to results from air magnetics, passive seismic and IP geophysical surveys only: this section is not relevant as no drilling results are reported.
	<ul style="list-style-type: none"> <i>Whether sample compositing has been applied.</i> 	<ul style="list-style-type: none"> This Report is related to results from air magnetics, passive seismic and IP geophysical surveys only: this section is not relevant as no drilling results are reported.
Orientation of data in relation to geological structure	<ul style="list-style-type: none"> <i>Whether the orientation of sampling achieves unbiased sampling of possible structures and the extent to which this is known, considering the deposit type.</i> 	<ul style="list-style-type: none"> This Report is related to results from air magnetics, passive seismic and IP geophysical surveys only: this section is not relevant as no drilling results are reported.
	<ul style="list-style-type: none"> <i>If the relationship between the drilling orientation and the orientation of key mineralised structures is considered to have introduced a sampling bias, this should be assessed and reported if material.</i> 	<p>This Report is related to results from air magnetics, passive seismic and IP geophysical surveys only: this section is not relevant as no drilling results are reported.</p>
Sample security	<ul style="list-style-type: none"> <i>The measures taken to ensure sample security.</i> 	<p>This Report is related to results from air magnetics, passive seismic and IP geophysical surveys only: this section is not relevant as no drilling results are reported.</p>
Audits or reviews	<ul style="list-style-type: none"> <i>The results of any audits or reviews of sampling techniques and data.</i> 	<p>This Report is related to results from air magnetics, passive seismic and IP geophysical surveys only: this section is not relevant as no drilling results are reported.</p>

personal use only

Section 2 Reporting of Exploration Results

(Criteria listed in the preceding section also apply to this section.)

Criteria	JORC Code explanation	Commentary
Mineral tenement and land tenure status	<ul style="list-style-type: none"> Type, reference name/number, location and ownership including agreements or material issues with third parties such as joint ventures, partnerships, overriding royalties, native title interests, historical sites, wilderness or national park and environmental settings. 	<ul style="list-style-type: none"> As per the ASX announcement 11 February 2025, Copper Search Limited has an exclusive Option, Earn-in and JV Agreement with the vendor Nimrod Resources Limited over the Byrock Project tenements. Copper Search has exclusive Option to commence a earn-in to 51% of the project. Under certain conditions CUS can earn-in to a 75% interest the full details are outlined above in the Material Terms of the Agreement Section. NSW Tenement Numbers EL9489, EL9612, EL9713 and EL9746 fall under the agreement. Native Title is extinguished over some parts of the tenements.
	<ul style="list-style-type: none"> The security of the tenure held at the time of reporting along with any known impediments to obtaining a licence to operate in the area. 	<ul style="list-style-type: none"> The tenure has been independently verified by a Tenement Management Company and is in good standing. Land Access Agreements (LAA) are in place over the current main prospects. If other new prospects are identified further LAA will need to be obtained to access the ground.
Exploration done by other parties	<ul style="list-style-type: none"> Acknowledgment and appraisal of exploration by other parties. 	<ul style="list-style-type: none"> The following companies are reported to have operated drilling programs on the project. <ul style="list-style-type: none"> 1970-71 North Brokenhill Limited: 3 DDH 1972 Placer Prospecting (Aus): 1 DDH 1978 Abminco: 11 open hole percussion collars 1978 Eastmet: 3 open hole percussion, 2 DDH 1979 Aberfoyle Exploration: 63 RAB (1m depth) 1983 CRAE: 4 RAB holes 1991 Platinum Search: 5 RAB, 1 RC 1992 CRAE: 2 RC 1997 Croesus Mining: 14 Air Core 1998 Straits Exploration: 16 RAB 2003 Dept Mineral Resources: 10 Air Core 2010 Tritton Resources: 2 DDH 2011 Ark Mines: 16 RC, 22 Air Core 2013 Raptor Minerals: 5 RC Total 179 drill holes 8,790m NSW Government public records show previous exploration also collected surface geochemical samples totalling 508 rock chips, 2607

Criteria	JORC Code explanation	Commentary
		<p>soil samples, 41 stream sediment, 39 surface lag and 415 “other” surface samples. Gravity data - ground based combined all previous exploration companies and state survey data at 2km station spacing. Falcon Airborne Gravity Gradiometry (AGG) was flown by Xcalibur Multiphysics on a north-south orientation, with 2000m spaced flight lines using a FASDAS data acquisition system, with a sensor height of 160m in 2023 for the NSW government over the Byrock Project. This data has been collated into the Company’s GIS package.</p> <p>Historical and NSW Government: 2km spaced ground station gravity data and airborne Falcon gravity (N-S) on 2km line spacing.</p> <ul style="list-style-type: none"> • <u>Nimrod</u>: 789-line kilometres of Drone Magnetic surveys were collected in 2024 by Airborne Geo Exploration for Nimrod at 50m flight lines spacing at flight height of 30m, with tie lines as required. The data was merged into the state government available data. Nimrod collected 108 rock chip and 499 soil samples over the project area between 2021-24 as detailed in announcement 11 Feb 2025.
Geology	<ul style="list-style-type: none"> • <i>Deposit type, geological setting and style of mineralisation.</i> 	<ul style="list-style-type: none"> • The Byrock project is prospective for large-scale Cu-Au porphyry deposits in the underexplored northern extension of the Macquarie Arc Junee-Narromine Volcanic Belt – Lachlan Fold Belt. The Project is also prospective for Cobar style Cu-Zn-Pb-Ag deposits and orogenic/ shear hosted gold.
Drill hole Information	<ul style="list-style-type: none"> • <i>A summary of all information material to the understanding of the exploration results including a tabulation of the following information for all Material drill holes:</i> <ul style="list-style-type: none"> ○ <i>easting and northing of the drill hole collar</i> ○ <i>elevation or RL (Reduced Level – elevation above sea level in metres) of the drill hole collar</i> ○ <i>dip and azimuth of the hole</i> ○ <i>down hole length and interception depth</i> ○ <i>hole length.</i> • <i>If the exclusion of this information is justified on the basis that the information is not Material and this exclusion does not detract from the understanding of the report, the Competent Person should clearly explain why this is the case.</i> 	<ul style="list-style-type: none"> • This Report is related to results from air magnetics, passive seismic and IP geophysical surveys only: this section is not relevant as no drilling results are reported. • All data available in the public record and current tenement holder Nimrod Resources has been collated and all significant intersections presented 11 February 2025. No information has been excluded that

personal use only

Criteria	JORC Code explanation	Commentary
		would materially detract from the understanding of the project.
Data aggregation methods	<ul style="list-style-type: none"> In reporting Exploration Results, weighting averaging techniques, maximum and/or minimum grade truncations (eg cutting of high grades) and cut-off grades are usually Material and should be stated. 	<ul style="list-style-type: none"> This Report is related to results from air magnetics, passive seismic and IP geophysical surveys only: this section is not relevant as no drilling results are reported.
	<ul style="list-style-type: none"> Where aggregate intercepts incorporate short lengths of high-grade results and longer lengths of low grade results, the procedure used for such aggregation should be stated and some typical examples of such aggregations should be shown in detail. 	<ul style="list-style-type: none"> This Report is related to results from air magnetics, passive seismic and IP geophysical surveys only: this section is not relevant as no drilling results are reported.
	<ul style="list-style-type: none"> The assumptions used for any reporting of metal equivalent values should be clearly stated. 	<ul style="list-style-type: none"> This Report is related to results from air magnetics, passive seismic and IP geophysical surveys only: this section is not relevant as no drilling results are reported.
Relationship between mineralisation widths and intercept lengths	<ul style="list-style-type: none"> If the geometry of the mineralisation with respect to the drill hole angle is known, its nature should be reported. 	<ul style="list-style-type: none"> This Report is related to results from air magnetics, passive seismic and IP geophysical surveys only: this section is not relevant as no drilling results are reported.
Diagrams	<ul style="list-style-type: none"> Appropriate maps and sections (with scales) and tabulations of intercepts should be included for any significant discovery being reported. These should include, but not be limited to a plan view of drill hole collar locations and appropriate sectional views. 	<ul style="list-style-type: none"> Maps, diagrams and appropriate section views are included in the body of the report or immediately above the JORC Table 1. No other cross sections are provided due to wide spacing of drilling and/or insignificant results and no new drilling is reported.
Balanced reporting	<ul style="list-style-type: none"> Where comprehensive reporting of all Exploration Results is not practicable, representative reporting of both low and high grades and/or widths should be practiced to avoid misleading reporting of Exploration Results. 	<ul style="list-style-type: none"> The report is considered balanced, as all known significant assays are reported.
Other substantive exploration data	<ul style="list-style-type: none"> Other exploration data, if meaningful and material, should be reported including (but not limited to): geological observations; geophysical survey results; geochemical survey results; bulk samples – size and method of treatment; metallurgical test results; bulk density, groundwater, geotechnical and rock characteristics; potential deleterious or contaminating substances. 	<ul style="list-style-type: none"> This Report is related to results from air magnetics, passive seismic and IP geophysical surveys only: <p><u>Air Magnetic Survey</u></p> <p>A fixed wing (Cessna 210) airborne magnetics and radiometrics survey was flown by MagSpec Airborne Surveys using the following instrumentation; Geometrics G-823A cesium vapour magnetometer</p>

Criteria	JORC Code explanation	Commentary
		<p>(0.001 nT Resolution, 0.01 nT sensitivity), a RSI RS-500 gamma-ray spectrometer, a Bendix-King KRA 405 radar altimeter (0.3m accuracy) and a Renishaw ILM-500R laser altimeter (0.01m accuracy), a Setra 276 barometric pressure (0.01mbar precision) / temperature sensor (0.1°C precision), GEM GSM-19 Overhauser (2x) magnetic base stations (0.01nT accuracy) and a Novatel OEM719 DGPS receiver with 0.4m positional accuracy. A total of 12,824 line kilometres were flown across four survey areas at 100m line spacing.</p> <p><u>Passive Seismic Survey</u></p> <p>Resource Potentials supplied four Tromino® TEB ENGY seismometers, which are a 3-axis broadband seismometer with and on-board GPS. The GPS has a lateral accuracy of 4m and vertical accuracy of 5m.</p> <p>Tromino® measure ambient seismic waves, commonly referred to as “passive seismic”, which are caused by wind, waves, and manmade vibrations. Geological applications include determining the thickness of low velocity cover, sitting above higher velocity bedrock.</p> <p>The survey was undertaken by Nimrod Resources employees, with oversight and training provided by Resource Potentials. Acquisition time was set to 20 minutes for each measurement and station spacings varied between 100m, 200m and 400m.</p> <p><u>Induced Polarisation (IP) Survey</u></p> <p>Zonge Engineering and Research Organisation (Australia) Pty Ltd completed Dipole-Dipole Induced Polarisation (DDIP), Pole-Dipole Induced Polarisation and EM surveys. A time domain DDIP survey providing up to 16 channels of data using 100-meter receiver dipoles was carried out over seven lines over approximately 19.2 line-kilometres across 4 survey areas. One line at T55 was repeated and extended using a PDIP array.</p> <p>A GDD GRX32 receiver was used for the survey. Porous PVC pots filled with copper sulphate were used as non-polarisable receiver electrodes. Zonge’s custom made multicore IP cables were used to</p>

personal use only

Criteria	JORC Code explanation	Commentary
		<p>collect up to 32 channels from a single location. Synchronisation with the transmitter is performed automatically by the receiver based on sensed turn-off times. DDIP, PDIP and EM transmitted fields were generated using a Zonge GGT30 Geophysical Transmitter. DDIP transmitter electrodes were constructed by lining pits with aluminium foil and re-filling these with salt water and soil. The two-turn 600x400 meter transmitter loop for FLEM surveying at CS13 was constructed using 2.5mm insulated wire. MLEM transmitter fields were provided from a two-turn 200x200 meter loop constructed of 2.5mm insulated wire.</p> <p>All DDIP data recorded during this survey was taken at a frequency of 0.125 Hertz using a 50% duty cycle transmitter waveform. During acquisition chargeability data was recorded over 20-time windows after an initial delay of 40ms. A semi-log window scheme was used to record decay data over the 2000ms off-time. Stack size was varied depending on signal strength and number of repeat stacks was adjusted in the field to balance survey speed with data quality. In general, 3 stacks of approximately 30 cycles were collected for good quality data, where signal strength was poor (generally due to low transmitter output current), the size and number of stacks was increased. The IP data was heavily affected by tellurics across all lines orientated approximately north-south causing quality to be lower than expected.</p>
Further work	<ul style="list-style-type: none"> <i>The nature and scale of planned further work (eg tests for lateral extensions or depth extensions or large-scale step-out drilling).</i> <i>Diagrams clearly highlighting the areas of possible extensions, including the main geological interpretations and future drilling areas, provided this information is not commercially sensitive.</i> 	<ul style="list-style-type: none"> Further planned works is detailed in the body of this report and includes geophysical confirmation surveys to rank drill targets, with intention to drill test high priority targets. Until geophysics surveys are completed, the potential extensions to prospects have cannot be determined.

personal use only