

# Lincoln confirms multiple uranium anomalies at Yallunda Project, SA

## Highlights:

- Multiple uranium anomalies identified in soil and rock chip sampling program at Yallunda Project, SA, with assay results expanding on previous survey data.
- Key anomalies confirmed at multiple locations across exploration tenements.
- Follow-up exploration program scheduled for H2 2025

Lincoln Minerals Limited (LML or Company') (ASX:LML) is pleased to provide an update on exploration at its Yallunda Uranium Project located on the Eyre Peninsula, South Australia. A recently completed sampling program across Exploration Tenements EL6648, EL5922, and EL6024 has delivered promising assay results, highlighted by multiple uranium anomalies and confirming the project's potential for future discovery.

Lincoln Minerals' CEO Jonathon Trewartha commented:

*"Initial results from our assaying program at Yallunda are very encouraging, highlighting multiple uranium anomalies and confirming contact between the Moody Suite granites and the Hutchison Group metasediments. In particular, soil sample YD38 has highlighted a uranium-vanadium-molybdenum anomaly, and these are characteristic of redox-controlled uranium mineralisation, therefore providing a further follow up target.*

*"We are planning a more comprehensive exploration program at Yallunda to commence in the second half of 2025 to map key lithological boundaries, undertake further geochemical sampling as well as geophysical surveys which will help us define potential mineralised zones.*

*"South Australia holds significant uranium resources and existing mining operations for uranium, and we look forward to providing updates on our work at Yallunda."*

## Encouraging results from key lithological contacts

Assay results have confirmed anomalous uranium concentrations in soils and rock chips at the contact between the Moody Suite granites and the Hutchison Group metasediments. Notable samples include YD38, YD39, and YD41, with uranium values ranging from **11ppm to 27ppm**. This anomaly indicates potential for uranium mobilisation and concentration at the lithological boundary, driven by geological contrasts between granitic and metasedimentary units, structural controls facilitating fluid flow, and redox interfaces promoting uranium precipitation.

## Multi-element anomalies – A redox-controlled mineralisation signature

Soil sample YD38 exhibited notable multi-element anomalies, including:

- **Uranium:** 11.5ppm
- **Vanadium:** 380ppm
- **Molybdenum:** 36ppm

# ASX ANNOUNCEMENT

2

These U-V-Mo anomalies are characteristic of redox-controlled uranium mineralisation and highlight the critical role of the Moody Suite-Hutchison Group contact as a prime exploration target.

## Significance of unconformity-related anomalies

Additional anomalies were detected in sandstone and sediments unconformably overlying the Miltalie Gneiss in samples YD09 and YD10, with uranium concentrations ranging from 8.5 to 10ppm U. The association with an unconformity surface represents another high-priority exploration target for future programs.

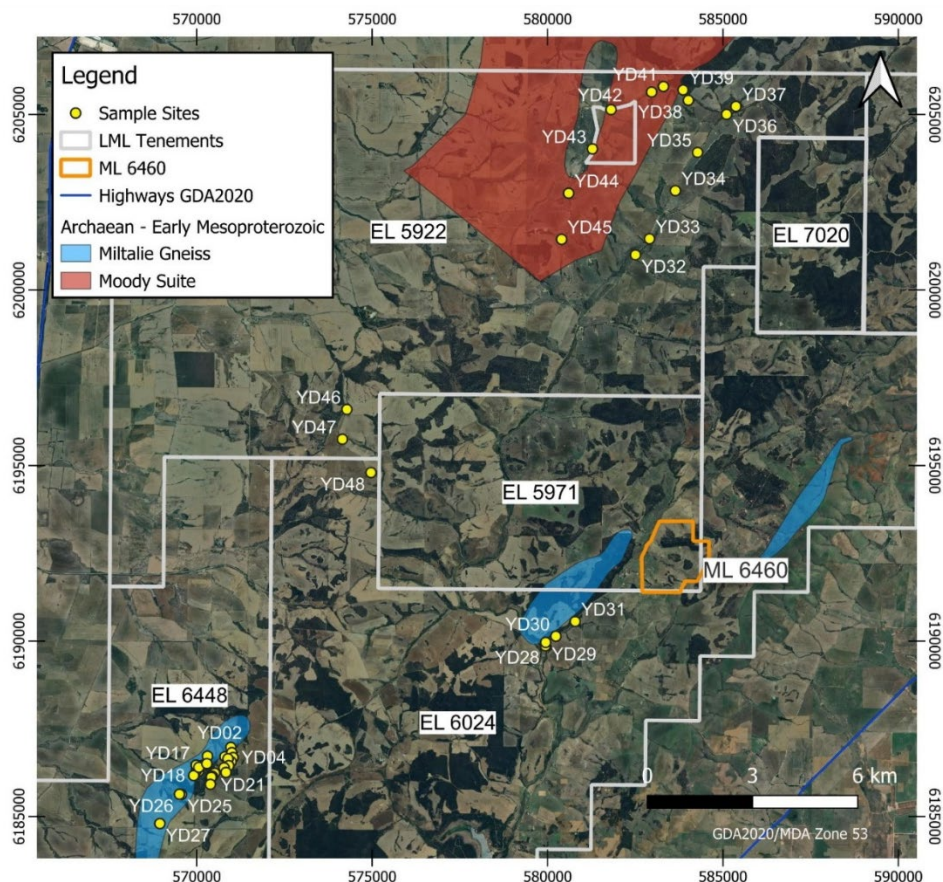
## Next Steps

Lincoln Minerals plans to build on these favourable results with an expanded exploration program at Yallunda in H2 CY25, which will include:

- Detailed mapping of key lithological boundaries
- Additional geochemical sampling
- Geophysical surveys to define potential mineralised zones.

Follow-up activities will advance Lincoln's understanding of the project's uranium potential and help guide the next phases of exploration.

Lincoln Minerals looks forward to updating stakeholders as work progresses.



**Figure 1. Map of soil and rock chip sample locations. Archean – Early Mesoproterozoic polygon dataset provided by DEM SA, GDA2020**

Ground Floor, Space Lab Building - Lot Fourteen  
4 Frome Road Adelaide South Australia 5000

[lincolnminerals.com.au](http://lincolnminerals.com.au)

Community Enquiries  
[community@lincolnminerals.com.au](mailto:community@lincolnminerals.com.au)  
Investor Enquiries  
[investors@lincolnminerals.com.au](mailto:investors@lincolnminerals.com.au)

**Lincoln**  
Minerals

# ASX ANNOUNCEMENT

3

## Background to the Yallunda Uranium Project

During April 2024<sup>1</sup>, Lincoln Minerals announced it had undertaken an initial review of the uranium prospectivity of the Eastern Eyre Peninsula revisiting the Company's previously identified uranium targets generated from exploration undertaken during the period 2007-2011.

The project area, characterised by the metamorphic lithologies of the Hutchison and Middleback Groups and igneous intrusions from the Moody Suite, is situated along the Kalinjala Shear Zone on the eastern margin of the Eyre Peninsula. This geological setting hosts significant magnetite deposits and the notable Kookaburra Gully graphite deposit.

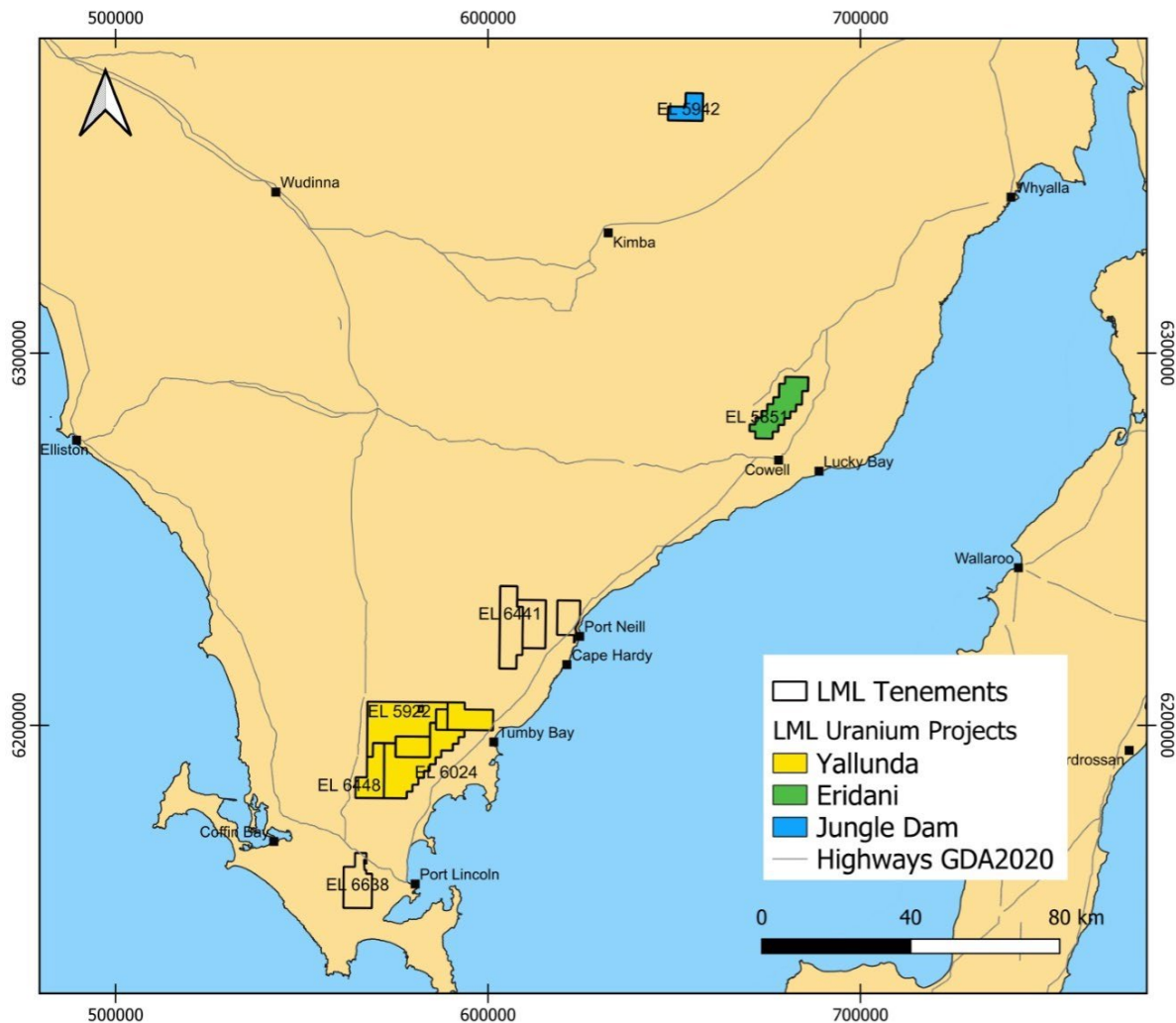


Figure 2 – Map showing Lincoln Minerals uranium tenements on the Eyre Peninsula, South Australia.

<sup>1</sup> LML ASX announcement 9 April 2024, titled “Multiple Uranium Targets Identified”.

For personal use only

**ASX ANNOUNCEMENT****4**

The area's uranium potential is heightened by the occurrence of uraniferous 'hot granites and gneiss' located proximal to reductants, such as graphite, which creates favourable conditions for uranium deposition. The presence of extensively folded graphitic units along the shear zone forms structural traps and alteration zones conducive to shear zone-style uranium mineralisation. These units intersect with unconformity boundaries, enhancing prospects for unconformity-style uranium mineralisation. Despite favourable characteristics and perceived potential for uranium deposition, the region has been historically underexplored for uranium, with previous exploration focusing mainly on iron ore and graphite resources.

The Yallunda Project includes the Carinya uranium prospect, which was discovered in 1980 by Afmeco Pty Ltd (Afmeco), which identified anomalous surface uranium mineralisation associated with the Miltalie gneiss that was subsequently followed up with trenching which confirmed the presence of uranium mineralisation.

Drilling<sup>2</sup> by Afmeco in 1982 identified mineralisation at or near the contact of an intrusive granite with ferruginous schist of the Hutchison Group. The best assay reported was 350 ppm U in drill hole KA 4 (White Flat) from 52-53m.

Drilling<sup>2</sup> carried out by Centrex (the owner prior to Lincoln) during its 2002 iron ore exploration program intercepted uranium in drillhole KODD001 with 260ppm U at 63-65m. The uranium anomalous interval occurred in pegmatitic veins within the Hutchison Group schists.

During 2009<sup>3</sup>, Lincoln undertook mapping in the Carinya and White Flat prospect area using a field portable Niton XRF analyser, identifying surface uranium mineralisation grading from 0.1 to 1.08% U over a strike length of about 300m. The 2011<sup>4</sup> airborne radiometric survey over the Carinya and White Flat projects defined a large 7km long uranium anomaly that had previously been untested.

**Update on Third-Party Funding Strategy**

Lincoln refers to its ASX announcement dated 16 October 2024, which outlined the commencement of a potential third-party funding strategy following informal approaches regarding investment in, partial divestment of, or the possible sale of its uranium portfolio.

Given the recent deterioration in sentiment across global uranium markets, Lincoln advises that no acceptable third-party proposals are currently being progressed. The Company remains open to further discussions with external parties. In the meantime, Lincoln will continue to advance and enhance the value of its uranium assets.

<sup>2</sup> LML ASX announcement 14 October 2024, "Lincoln commences exploration at 7km uranium anomaly on the Eyre Peninsula, SA"

<sup>3</sup> LML ASX announcement, 30 October 2009, "Lincoln Minerals Ltd Quarterly Activities Report – September 2009." The 2009 information was prepared and first disclosed under the JORC Code 2004. It has not been updated since to comply with the JORC Code 2012 on the basis that the information has not materially changed since it was last reported.

<sup>4</sup> LML ASX announcement, 29 April 2011, "Lincoln Minerals Ltd Quarterly Activities Report – April 2011."

For personal use only

**ASX ANNOUNCEMENT****5****Competent Person Statement**

The information in this document that relates to Exploration Results is based upon information compiled by Mr S. O'Connell who is a Member of the Australasian Institute of Mining and Metallurgy. Mr O'Connell is a consultant to Lincoln Minerals Limited and has sufficient experience relevant to the style of mineralisation, the type of deposit under consideration and to the activity undertaken to qualify as a Competent Person as defined in the 2012 edition of the Australasian Code for Reporting of Exploration Results, Mineral Resources and Ore Reserves (the JORC Code). Mr O'Connell consents to the release of the information compiled in this report in the form and context in which it appears.

The information related to the Carinya and White Flat prospect area Exploration Results was prepared and first disclosed under the JORC Code 2004 by Lincoln Minerals in 2009. It has not been updated since to comply with the JORC Code 2012 on the basis that the information has not materially changed since it was last reported. The information is extracted from the report entitled "Lincoln Minerals Ltd Quarterly Activities Report – September 2009", announced to ASX on 30 October 2009 and is available to view on [www.lincolnminerals.com.au](http://www.lincolnminerals.com.au). The company confirms that it is not aware of any new information or data that materially affects the information included in the original market announcement. The company confirms that the form and context in which the Competent Person's findings as presented have not been materially modified from the original market announcement.

**Approved for release by the Board of Lincoln Minerals Limited.** For further information, please visit [lincolnminerals.com.au](http://lincolnminerals.com.au)

**Jonathon Trewartha**

Chief Executive Officer

**Lincoln Minerals Limited**[Jonathon.trewartha@lincolnminerals.com.au](mailto:Jonathon.trewartha@lincolnminerals.com.au)

+1300 137 116

**Kristin Rowe**

Investor and Media Relations

**NWR Communications**[kristin@nwrcommunications.com.au](mailto:kristin@nwrcommunications.com.au)

+61 404 88 98 96

Ground Floor, Space Lab Building - Lot Fourteen  
4 Frome Road Adelaide South Australia 5000

[lincolnminerals.com.au](http://lincolnminerals.com.au)

Community Enquiries

[community@lincolnminerals.com.au](mailto:community@lincolnminerals.com.au)

Investor Enquiries

[investors@lincolnminerals.com.au](mailto:investors@lincolnminerals.com.au)

**Lincoln**  
Minerals

# ASX ANNOUNCEMENT

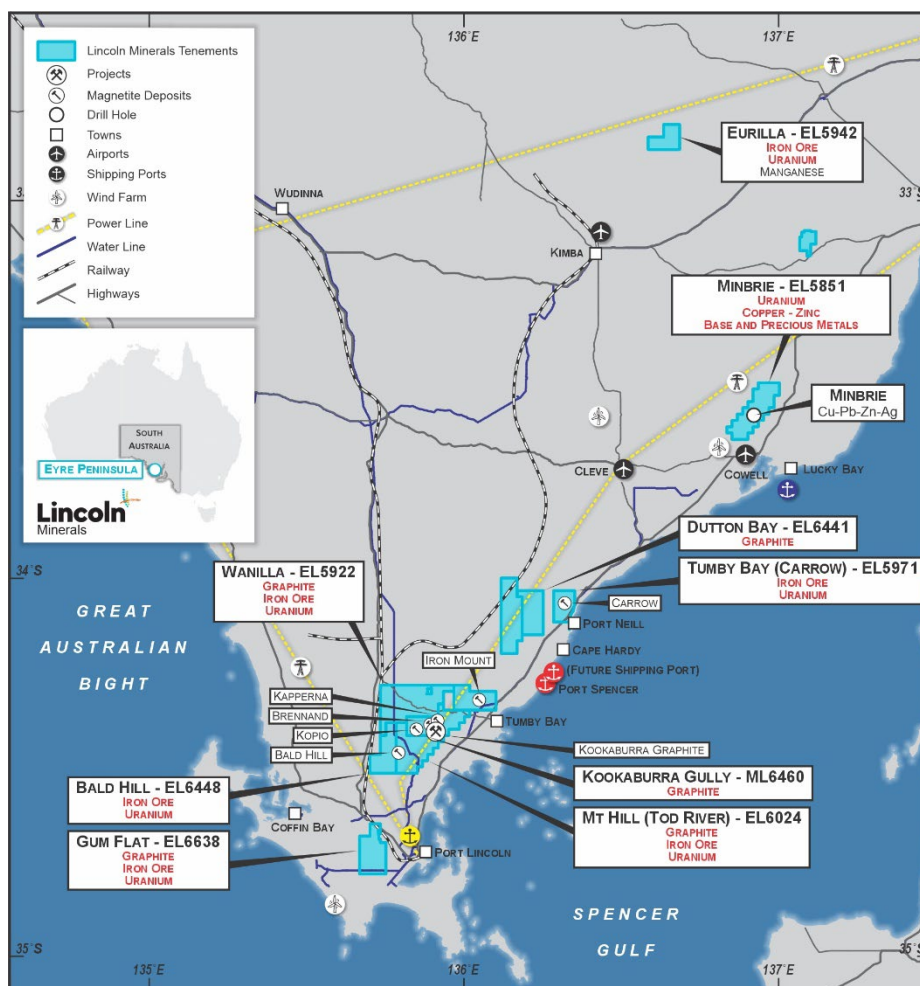
6

## About Lincoln Minerals

Lincoln Minerals (ASX: LML) is an Australian exploration and development company focused on advancing critical minerals projects in South Australia’s world-class Gawler Craton region. Lincoln’s portfolio includes high-value copper, uranium, graphite, and magnetite assets, all strategically positioned to support the global shift towards electrification, decarbonisation, and supply chain security.

The company’s key projects include the Minbrie Copper & Base Metals Project, where recent exploration has confirmed a large-scale mineralised system over a 7km strike<sup>5</sup>. Lincoln is also advancing the Kookaburra Graphite Project, a high-grade, at-surface deposit on an existing mining lease, and the Green Iron Magnetite Project, a large-scale magnetite resource positioned to supply SA’s emerging green steel industry. The company also holds multiple highly prospective uranium targets across its existing tenement portfolio, located in a highly prospective uranium region.

Lincoln is actively progressing exploration and development across its portfolio while seeking strategic partnerships and alternative funding pathways to accelerate project advancement.



Location of Lincoln Minerals’ projects in South Australia

<sup>5</sup> LML ASX announcement 17 February 2025 “Lincoln confirms mineralised system with multiple sulphide zones over 7km of strike at Minbrie, SA.”

Ground Floor, Space Lab Building - Lot Fourteen  
4 Frome Road Adelaide South Australia 5000

[lincolnminerals.com.au](http://lincolnminerals.com.au)

Community Enquiries  
[community@lincolnminerals.com.au](mailto:community@lincolnminerals.com.au)  
Investor Enquiries  
[investors@lincolnminerals.com.au](mailto:investors@lincolnminerals.com.au)



For personal use only

## ASX ANNOUNCEMENT

7

## JORC TABLE 1

## Section 1 Sampling Techniques and Data

## Section 1 Sampling Techniques and Data

Criteria	Explanation
<i>Sampling techniques</i>	<p>Point surface samples consisting of soils, floats, and rock chips of outcropping rocks. Samples retrieved through the use of a geological pick and hand shovel.</p> <p>Each sample was described and photographed at the site to ensure accurate records of sampled material. Samples were selected based on aerial radiometric data, previous geological mapping, and visible outcrops. The samples are selective but representative of the outcrops they were taken from.</p> <p>Soil samples were collected using a hand shovel, digging to a depth of 30-40 cm to avoid surface contamination.</p> <p>Rock chip and soil sampling is an industry wide field technique for establishing metal content to understand potential tenor of underlying mineralisation.</p>
<i>Drilling techniques</i>	Not applicable as there is no new drilling information.
<i>Drill sample recovery</i>	Not applicable as there is no new drilling information.
<i>Logging</i>	Rock chip and soil samples collected were logged for various geological attributes including colour, lithology and degree of weathering. Photos were taken of each sample.
<i>Sub-sampling techniques and sample preparation</i>	<p>Samples were collected dry and consist of multiple chips dislodged and fractured by a geological pick and soil samples dug with a hand shovel. Samples were between 0.5-1.5kg weight and placed directly into numbered canvas bags at the collection point.</p>
<i>Quality of assay data and laboratory tests</i>	<p>All samples were analysed by Bureau Veritas Minerals Pty Ltd for laboratory processing in Adelaide.</p> <p>Samples are passed through a primary crusher to bring the particle size down to -10mm. This is followed by LM5 pulverising.</p> <p>Samples have undergone two methods of analysis depending on the elemental suite. Mixed Acid Digestion and Lithium Borate Fusion.</p> <p>Mixed acid digest consists of an aliquot of sample accurately weighed and digested with a mixture of nitric, perchloric and hydrofluoric acids. The sample is then treated by a final dissolution in hydrochloric acid.</p> <p>Lithium borate fusion consists of an aliquot of sample accurately weighed and fused with lithium metaborate at a high temperature in a Pt crucible. The fused glass is then digested in nitric acid. This process provides complete dissolution of most minerals including silicates.</p>

For personal use only

## ASX ANNOUNCEMENT

8

	<p>Depending on the elemental suite, ICP-MS and ICP-AES have been used to quantitatively determine element concentrations. Uranium has been analysed by ICP-MS while vanadium has been analysed by ICP-AES.</p> <p>The Bureau Veritas lab inserts its own standards and blanks at set values and monitors the precision of the analyses. As well, the lab performs repeat analyses at random intervals, which return acceptably similar values to the original samples.</p> <p>Laboratory procedures are within industry standards and are appropriate for the rock types and commodities of interest.</p>
<i>Verification of sampling and assaying</i>	<p>A total of 48 samples were chosen at random from outcrops and soil locations in the field. While there may be some selection bias of the samples, it is the view of the Competent Person that the results can be used for early-stage exploration with the aim of assisting in targeting of future exploration programs.</p> <p>No assay data has been adjusted.</p> <p>The assay method and laboratory procedures were appropriate for the rock types and style of mineralisation</p>
<i>Location of data points</i>	<p>Reported grid system is MGA2020 Zone 53.</p> <p>See Figure 1 and Appendix 1 of this release for sample coordinates.</p> <p>Sample locations were determined by handheld GPS +/-5m, at time of collection.</p> <p>Elevation was recorded for each sample.</p> <p>Location data is of sufficient quality for reporting of exploration results at this early stage.</p>
<i>Data spacing and distribution</i>	<p>Selective sampling based on field observations and outcrops identified as hosting potential for mineralisation.</p> <p>Soil sample spacing ranged from 50-1000m.</p>
<i>Orientation of data in relation to geological structure</i>	<p>Soil samples were taken along contact boundaries between geological units, and along fault lines. Soil samples were also taken proximal to granitic intrusions.</p> <p>Rock chip samples were taken along strike of the targeted rock unit as well as perpendicular across several units.</p> <p>Rock chip samples were also taken along contact boundaries between units.</p>
<i>Sample security</i>	<p>The samples were placed into individual canvas bags and then tied by drawstring at the opening of the bag.</p>
<i>Audits or reviews</i>	<p>No audits of the data have been undertaken.</p>

## Section 2 Reporting of Exploration Results

Ground Floor, Space Lab Building - Lot Fourteen  
4 Frome Road Adelaide South Australia 5000

[lincolnminerals.com.au](http://lincolnminerals.com.au)

Community Enquiries  
[community@lincolnminerals.com.au](mailto:community@lincolnminerals.com.au)  
Investor Enquiries  
[investors@lincolnminerals.com.au](mailto:investors@lincolnminerals.com.au)

**Lincoln**  
Minerals

For personal use only

## ASX ANNOUNCEMENT

9

(Criteria listed in the preceding section also apply to this section.)

Criteria	Explanation
<i>Mineral tenement and land tenure status</i>	<p>Exploration Licence EL 6448, EL 6024, EL 5922, EL 5971 are held by Lincoln Minerals Ltd.</p> <p>The project is located on freehold land. There are no joint ventures, partnerships or overriding royalties on the forementioned tenements.</p> <p>Native title is held by the Barngarla Determination Aboriginal Corporation</p>
<i>Exploration done by other parties</i>	<p>Afmeco undertook exploration drilling and assays from 1980-1982. Further details are recorded in LML ASX announcement dated 14 October 2024, titled "Lincoln commences exploration at 7km uranium anomaly on the Eyre Peninsula, SA.</p> <p>During 2002, Centrex Ltd completed exploration drilling activity. Further details are recorded in LML ASX announcement dated 14 October 2024, titled "Lincoln commences exploration at 7km uranium anomaly on the Eyre Peninsula, SA.</p>
<i>Geology</i>	<p>The project region is characterized by the metamorphic lithologies of the Hutchison and Middleback Group punctuated by igneous intrusions from the Moody Suite and is positioned along an extensive regional shear zone that traverses the entire eastern coast of the Eyre Peninsula.</p> <p>This area hosts significant magnetite deposits like those at Koppio and Brennand, alongside the Kookaburra Gully graphite deposit. The region's geology includes uranium-rich hot granites and reductants such as graphite, creating favourable conditions for uranium deposition.</p> <p>The presence of graphitic units, which are extensively folded along the shear zone, contributes to shear zone-style uranium mineralisation by creating structural traps and alteration zones conducive to uranium concentration. These graphitic units intersect with unconformity boundaries throughout the project area, enhancing prospects for unconformity-style uranium mineralisation where metasedimentary sequences meet overlying unconformities, offering further potential uranium traps.</p> <p>Historically, the area has been underexplored for uranium, with previous explorations primarily targeting the iron ore and graphite resources.</p>
<i>Drill hole Information</i>	Not applicable as there is no new drilling information.
<i>Data aggregation methods</i>	Top cuts or lower cuts of assay results have not been applied to the reported information.
<i>Relationship between mineralisation widths and intercept lengths</i>	Not applicable as there is no new drilling information.
<i>Diagrams</i>	Refer to figures in this announcement.

**ASX ANNOUNCEMENT****10**

<i>Balanced reporting</i>	All assay results received from samples collected in the soil survey are reported in appendix 1 below.
<i>Other substantive exploration data</i>	For details of the radiometric survey work see LML ASX announcement 14 October 2024, "Lincoln commences exploration at 7km uranium anomaly on the Eyre Peninsula, SA
<i>Further work</i>	Follow up sampling is proposed over the next six months. Follow up work may include gravity surveys over geochemical anomalies.

For personal use only

## ASX ANNOUNCEMENT

11

Appendix 1. Assay Table

Sample ID	East GDA 2020	North GDA 2020	Zone	Sample Type	Date Collected	Wet Wt	- 75µm	Al	Ba	Be	Bi	Ca	Co	Cr	Cs	Fe	Ga
Unit						grams	%	%	ppm	ppm	ppm	%	ppm	ppm	ppm	%	ppm
Analysis Scheme						PR 002	PR 403	LB1 01	LB1 01	LB1 02	LB1 02	LB1 01	LB1 02	LB1 01	LB1 02	LB1 01	LB1 02
Detection Limit						1	0.01	0.005	20	0.5	3	0.01	10	20	1	0.01	1
YD01	5708 04.6	61867 02.1	53	Soil	1/12/2 024	520	N.A.	7.83	300	2	<3	0.28	<10	60	5	4.6	19
YD02	5709 73.1	61869 69.8	53	Outcrop Granite	1/12/2 024	544	N.A.	7.45	140	2.5	<3	0.18	<10	80	5	0.82	20
YD03	5710 00	61868 15.9	53	Soil	1/12/2 024	506	N.A.	5.7	380	2.5	<3	0.36	<10	40	3	2.26	12
YD04	5710 35.3	61866 78.5	53	Outcrop Quartz Vein	1/12/2 024	630	N.A.	0.64	40	0.5	<3	0.03	<10	40	2	1.39	2
YD05	5709 80	61865 60.4	53	Soil	1/12/2 024	453	N.A.	12.9	280	3	<3	0.26	<10	100	15	5.67	32
YD06	5708 84.4	61866 12.4	53	Soil	1/12/2 024	438	N.A.	7.51	420	3	<3	0.56	<10	40	6	4.04	18
YD06 Rpt	5708 84.4	61866 12.4	53	Soil	1/12/2 024	N.A.	N.A.	7.42	400	3	<3	0.55	<10	40	6	3.96	19
YD07	5708 91.6	61866 44.7	53	Float Granite	1/12/2 024	858	N.A.	5.41	160	1.5	<3	0.15	<10	20	3	1.05	11
YD08	5709 12	61864 47.4	53	Outcrop Quartz Vein	1/12/2 024	898	95.7	0.145	<20	<0.5	<3	0.02	<10	<20	<1	0.76	<1
YD09	5707 80	61863 88.3	53	Outcrop Sandstone	1/12/2 024	1042	N.A.	10.3	840	1.5	<3	0.06	30	100	2	12	35
YD10	5708 33.9	61862 53.8	53	Outcrop Saprock	1/12/2 024	956	N.A.	10.7	220	1.5	<3	0.06	<10	80	1	0.89	24
YD11	5703 07.5	61867 19.3	53	Soil	1/12/2 024	439	N.A.	9.8	620	2	<3	0.08	<10	40	4	2.29	34
YD12	5702 02.6	61864 62.3	53	Soil	1/12/2 024	392	N.A.	9.61	720	1.5	<3	0.17	<10	40	4	5.7	33
YD13	5701 31.8	61864 46.5	53	Float Schist	1/12/2 024	965	N.A.	6.58	1060	1.5	<3	0.15	<10	20	3	3.29	25
YD14	5702 02.8	61864 60.8	53	Float Schist	1/12/2 024	1098	N.A.	6.14	920	2	<3	0.1	<10	<20	5	3.67	25
YD15	5700 54.5	61862 88.9	53	Outcrop Gneiss	1/12/2 024	932	N.A.	6.29	1380	1.5	<3	0.13	<10	<20	5	2.68	25
YD16	5699 91	61863 13.3	53	Outcrop Gneiss	1/12/2 024	1199	N.A.	6.27	1060	1.5	<3	0.21	<10	<20	7	3.31	26
YD17	5699 82.6	61864 60.1	53	Soil	1/12/2 024	704	N.A.	4.02	820	1	<3	0.11	<10	20	1	1.68	11

Ground Floor, Space Lab Building - Lot Fourteen  
4 Frome Road Adelaide South Australia 5000

[lincolnminerals.com.au](http://lincolnminerals.com.au)

Community Enquiries

[community@lincolnminerals.com.au](mailto:community@lincolnminerals.com.au)

Investor Enquiries

[investors@lincolnminerals.com.au](mailto:investors@lincolnminerals.com.au)

**Lincoln**  
Minerals

## ASX ANNOUNCEMENT

12

YD18	5699 13.2	61861 65	53	Outcrop Gneiss	1/12/2 024	771	N.A	5.7 4	160	1	<3	0.1	<10	<20	10	22. 6	26
YD19	5700 62	61863 99.8	53	Soil	1/12/2 024	618	N.A	4.8 1	800	1	<3	0.1 4	<10	20	2	2.4 3	14
YD20	5702 89.6	61865 04.3	53	Outcrop Quartzite	1/12/2 024	767	N.A	0.4 1	<20	<0. 5	<3	0.0 4	<10	20	<1	1.1	2
YD21	5705 10.8	61862 32.8	53	Float Quartzite	1/12/2 024	437	N.A	0.5 2	<20	0.5	<3	0.0 3	<10	60	<1	1.7 7	2
YD22	5704 46.2	61861 42.5	53	Outcrop Pegmatite	1/12/2 024	105 1	N.A	7	200	4.5	<3	0.1	<10	20	2	1.0 3	15
YD23	5704 15.1	61861 18.8	53	Outcrop Gneiss	1/12/2 024	845	N.A	8.2 2	780	5	<3	0.4 3	20	120	13	6.2 3	22
YD24	5703 88.1	61859 14.9	53	Outcrop Saprock	1/12/2 024	662	N.A	0.4 2	60	0.5	<3	0.0 3	<10	40	<1	1.3 6	5
YD25	5695 63.8	61856 27.4	53	Outcrop Gneiss	1/12/2 024	957	N.A	5.9 6	100 0	2	<3	0.1 1	<10	<20	7	4.2	27
YD26	5695 08.3	61856 34.6	53	Outcrop Gneiss	1/12/2 024	812	N.A	5.8 2	700	1.5	<3	0.1 9	<10	<20	12	5.0 9	31
YD27	5689 48.9	61847 97	53	Outcrop Gneiss	1/12/2 024	880	N.A	6.2 6	108 0	1	<3	0.1 7	<10	20	5	4.0 9	27
YD28	5799 41.7	61898 52.5	53	Outcrop Gneiss	3/12/2 024	868	96. 9	1.0 9	120	0.5	<3	0.0 2	<10	40	<1	0.9 3	3
YD28 Rpt	5799 41.7	61898 52.5	53	Outcrop Gneiss	3/12/2 024	N.A	N.A	1.0 6	120	0.5	<3	0.0 2	<10	40	<1	0.9 2	3
YD29	5799 46.8	61899 01.6	53	Soil	3/12/2 024	799	N.A	1.6 1	40	1	<3	0.0 4	<10	40	<1	1.9 8	5
YD30	5802 40.2	61901 35.7	53	Soil	3/12/2 024	380	N.A	3.7 1	80	1	<3	0.0 4	<10	100	<1	7.6 4	13
YD31	5807 91.1	61905 57.5	53	Soil	3/12/2 024	576	N.A	2.6 9	100	1	<3	0.0 7	<10	40	<1	1.6 7	8
YD32	5825 09.5	62010 04.5	53	Soil	3/12/2 024	374	N.A	3.7 3	60	2.5	<3	0.2 4	<10	60	2	7.1 8	11
YD33	5829 11	62014 63.3	53	Soil	3/12/2 024	382	N.A	1.9 4	140	0.5	<3	0.0 7	<10	40	<1	2.8 1	6
YD34	5836 48.7	62028 34.1	53	Soil	3/12/2 024	190	N.A	13. 8	60	2	<3	0.0 7	<10	100	4	5.8 1	35
YD35	5842 81.3	62039 23.9	53	Soil	3/12/2 024	143	N.A	10	60	31. 5	<3	0.1 5	<10	60	22	3.0 6	32
YD36	5851 07.4	62050 08.9	53	Soil	3/12/2 024	538	N.A	8.1 2	120	2	<3	0.0 6	<10	60	3	7.6 8	28
YD37	5851 36.9	62050 90.2	53	Outcrop Gneiss	3/12/2 024	605	N.A	7.6 8	160	3	<3	0.3 8	<10	<20	4	1.6 9	25
YD37 Rpt	5851 36.9	62050 90.2	53	Outcrop	3/12/2 024	N.A	N.A	7.4 5	160	3	<3	0.3 8	<10	<20	4	1.6 7	24

Ground Floor, Space Lab Building - Lot Fourteen  
4 Frome Road Adelaide South Australia 5000

[lincolnminerals.com.au](http://lincolnminerals.com.au)

Community Enquiries

[community@lincolnminerals.com.au](mailto:community@lincolnminerals.com.au)

Investor Enquiries

[investors@lincolnminerals.com.au](mailto:investors@lincolnminerals.com.au)

**Lincoln**  
Minerals

For personal use only



## ASX ANNOUNCEMENT

13

				Gneiss														
YD38	5841 62.8	62054 29.2	53	Soil	3/12/2 024	400	N.A	9.1 6	160	3	<3	0.0 6	<10	40	4	4.7 2	37	
YD39	5841 63.2	62054 30.2	53	Outcrop Calcrete	3/12/2 024	568	N.A	17	40	1.5	<3	0.0 6	<10	20	<1	0.5 5	45	
YD40	5829 56.7	62056 39	53	Soil	3/12/2 024	206	N.A	5.9 2	260	3	<3	0.1 6	<10	20	3	1.9 5	15	
YD41	5829 56.7	62056 39	53	Outcrop Gneiss	3/12/2 024	825	N.A	7.2 2	240	4.5	<3	0.3 6	<10	40	11	2.0 1	26	
YD42	5818 12.2	62051 43.4	53	Soil	3/12/2 024	712	N.A	7.1 4	540	3.5	<3	0.2 3	<10	60	6	3.6 1	19	
YD43	5812 83.4	62040 24.9	53	Soil	3/12/2 024	598	N.A	5.2 4	520	2	<3	0.1 4	<10	20	3	2.1 1	13	
YD44	5806 03.9	62027 61.8	53	Soil	3/12/2 024	276	N.A	4.7 6	114 0	1	<3	0.1 8	<10	60	1	4.2 7	13	
YD45	5804 03.5	62014 48	53	Soil	3/12/2 024	308	N.A	8.6 6	140	1.5	<3	0.1 1	<10	120	1	15	36	
YD46	5742 81.7	61966 00	53	Soil	3/12/2 024	632	N.A	2.4 6	100	1	<3	0.0 9	<10	120	<1	10. 8	13	
YD47	5741 54.6	61957 51.3	53	Soil	3/12/2 024	832	N.A	5.1 3	100	1.5	<3	0.0 9	<10	120	2	10. 5	20	
YD48	5749 68.5	61947 99.8	53	Soil	3/12/2 024	206	95. 1	9.3 9	100	1.5	<3	0.0 9	<10	140	3	10. 2	28	

Sample ID	East GDA 2020	North GDA 2020	Zone	Sample Type	Date Collected	Wet Wt	-75um	Hf	Lu	K	Mg	Mn	Mo	Na	Nb	P	Rb
Unit						grams	%	ppm	ppm	%	%	%	ppm	%	ppm	%	ppm
Analysis Scheme						PR 002	PR 403	LB1 02	LB1 02	LB1 01	LB1 01	LB1 01	LB1 02	LB1 01	LB1 02	LB1 01	LB1 02
Detection Limit						1	0.01	1	0.5	0.01	0.05	0.05	2	0.01	5	0.05	0.5
YD01	5708 04.6	61867 02.1	53	Soil	1/12/ 2024	520	N.A	5	<0. 5	1.7 7	0.4 05	0.0 25	<2	0.6 7	10	0.0 15	98. 5
YD02	5709 73.1	61869 69.8	53	Outcrop / Granite	1/12/ 2024	544	N.A	1	<0. 5	5.5 3	0.0 5	0.0 1	<2	2.1 1	5	0.0 25	246
YD03	5710 00	61868 15.9	53	Soil	1/12/ 2024	506	N.A	4	<0. 5	2.6 3	0.1 55	0.0 55	2	1.1 5	<5	0.0 2	110
YD04	5710 35.3	61866 78.5	53	Outcrop Quartz Vein	1/12/ 2024	630	N.A	2	<0. 5	0.5 2	0.0 3	0.0 1	<2	0.0 5	<5	<0. 005	18. 5
YD05	5709 80	61865 60.4	53	Soil	1/12/ 2024	453	N.A	7	<0. 5	2.2 7	0.6 85	0.0 25	<2	0.2 4	20	0.1 15	223
YD06	5708 84.4	61866 12.4	53	Soil	1/12/ 2024	438	N.A	6	<0. 5	1.9 7	0.3 0.3	0.0 4	<2	1.0 7	10	0.0 35	116
YD06 Rpt	5708 84.4	61866 12.4	53	Soil	1/12/ 2024	N.A	N.A	7	<0. 5	1.9 2	0.2 95	0.0 4	<2	1.0 8	10	0.0 4	120
YD07	5708 91.6	61866 44.7	53	Float Granite	1/12/ 2024	858	N.A	<1	<0. 5	3.7 8	0.0 25	0.0 1	<2	1.9 3	<5	0.0 25	157
YD08	5709 12	61864 47.4	53	Outcrop Quartz Vein	1/12/ 2024	898	95. 7	<1	<0. 5	0.1 2	0.0 1	0.0 1	<2	0.0 3	<5	0.0 15	2.5

Ground Floor, Space Lab Building - Lot Fourteen  
4 Frome Road Adelaide South Australia 5000

lincolnminerals.com.au

Community Enquiries

community@lincolnminerals.com.au

Investor Enquiries

investors@lincolnminerals.com.au

**Lincoln**  
Minerals

## ASX ANNOUNCEMENT

14

YD09	5707 80	61863 88.3	53	Outcr op Sands tone	1/12/ 2024	104 2	N.A .	7	1	7.1 2	0.9 95	0.1 45	<2	0.5 5	15	0.0 4	399
YD10	5708 33.9	61862 53.8	53	Outcr op Sapro ck	1/12/ 2024	956	N.A .	5	<0. 5	0.6 5	0.0 85	0.0 05	<2	0.1 1	10	0.0 2	32. 5
YD11	5703 07.5	61867 19.3	53	Soil	1/12/ 2024	439	N.A .	16	1	3.1 0.1	0.1 05	0.0 05	<2	0.1 6	15	0.0 4	163
YD12	5702 02.6	61864 62.3	53	Soil	1/12/ 2024	392	N.A .	12	0.5	3.4 7	0.3 35	0.0 15	<2	0.6 6	15	0.0 35	244
YD13	5701 31.8	61864 46.5	53	Float Schist	1/12/ 2024	965	N.A .	10	1	4.9 5	0.5 35	0.0 1	<2	1.2	10	0.0 25	275
YD14	5702 02.8	61864 60.8	53	Float Schist	1/12/ 2024	109 8	N.A .	13	1	5.0 1	0.6 55	0.0 15	<2	1	10	0.0 4	220
YD15	5700 54.5	61862 88.9	53	Outcr op Gneis s	1/12/ 2024	932	N.A .	12	1	5.2 6	0.5 55	0.0 15	4	1.1 1	10	0.0 35	211
YD16	5699 91	61863 13.3	53	Outcr op Gneis s	1/12/ 2024	119 9	N.A .	15	1	4.9 7	0.6 1	0.0 2	<2	1.2	15	0.0 25	234
YD17	5699 82.6	61864 60.1	53	Soil	1/12/ 2024	704	N.A .	7	0.5	3.5 1	0.0 55	0.0 1	<2	0.4	<5	0.0 35	108
YD18	5699 13.2	61861 65	53	Outcr op Gneis s	1/12/ 2024	771	N.A .	14	1	0.9 8	0.2 95	0.0 1	4	0.0 8	20	0.0 35	116
YD19	5700 62	61863 99.8	53	Soil	1/12/ 2024	618	N.A .	17	1.5	3.5 8	0.0 8	0.0 15	<2	0.5 3	5	0.0 4	131
YD20	5702 89.6	61865 04.3	53	Outcr op Quart zite	1/12/ 2024	767	N.A .	2	<0. 5	0.1 6	0.0 15	0.0 1	<2	0.0 5	<5	0.0 1	4
YD21	5705 10.8	61862 32.8	53	Float Quatr zite	1/12/ 2024	437	N.A .	<1	<0. 5	0.1 9	0.0 3	0.0 15	<2	0.0 3	<5	0.0 1	5
YD22	5704 46.2	61861 42.5	53	Outcr op Pegm atite	1/12/ 2024	105 1	N.A .	<1	<0. 5	2.8 4	0.0 75	0.0 15	<2	3.1 1	<5	0.0 25	125
YD23	5704 15.1	61861 18.8	53	Outcr op Gneis s	1/12/ 2024	845	N.A .	8	1	4.0 4	1.2 3	0.2 5	<2	0.8 7	10	0.0 5	268
YD24	5703 88.1	61859 14.9	53	Outcr op Sapro ck	1/12/ 2024	662	N.A .	12	<0. 5	0.1	0.0 1	0.0 15	4	0.0 4	15	0.0 1	2
YD25	5695 63.8	61856 27.4	53	Outcr op Gneis s	1/12/ 2024	957	N.A .	16	1.5	5.1 9	0.6 3	0.0 2	<2	0.8 4	15	0.0 45	221
YD26	5695 08.3	61856 34.6	53	Outcr op Gneis s	1/12/ 2024	812	N.A .	16	1.5	4.3 3	1	0.0 3	<2	0.9 3	25	0.0 3	292
YD27	5689 48.9	61847 97	53	Outcr op Gneis s	1/12/ 2024	880	N.A .	14	1	5.3 7	0.9 5	0.0 2	<2	0.8 6	15	0.0 35	252
YD28	5799 41.7	61898 52.5	53	Outcr op	3/12/ 2024	868	96. 9	4	<0. 5	0.7 6	0.0 25	0.0 1	<2	0.0 4	<5	0.0 15	28

Ground Floor, Space Lab Building - Lot Fourteen  
4 Frome Road Adelaide South Australia 5000

[lincolnminerals.com.au](http://lincolnminerals.com.au)

Community Enquiries

[community@lincolnminerals.com.au](mailto:community@lincolnminerals.com.au)

Investor Enquiries

[investors@lincolnminerals.com.au](mailto:investors@lincolnminerals.com.au)

**Lincoln**  
Minerals

For personal use only



# ASX ANNOUNCEMENT

15



For personal use only

YD	Sample ID	East GDA 2020	North GDA 2020	Zone	Sample Type	Date Collected	Wet Wt	- 75um	Re	Sb	Sc	Se	Si	Sn	Sr	Ta	Te	Th
YD28	Rpt	5799 41.7	61898 52.5	53	Outcrop Gneiss	3/12/ 2024	N.A	N.A	4	<0.5	0.73	0.025	0.01	<2	0.04	<5	0.015	27
YD29		5799 46.8	61899 01.6	53	Soil	3/12/ 2024	799	N.A	2	<0.5	0.47	0.045	0.015	<2	0.05	<5	0.015	19
YD30		5802 40.2	61901 35.7	53	Soil	3/12/ 2024	380	N.A	5	<0.5	0.45	0.065	0.01	<2	0.05	5	0.02	19.5
YD31		5807 91.1	61905 57.5	53	Soil	3/12/ 2024	576	N.A	8	0.5	0.88	0.055	0.015	<2	0.08	5	0.02	34
YD32		5825 09.5	62010 04.5	53	Soil	3/12/ 2024	374	N.A	4	<0.5	0.38	0.095	0.02	<2	0.13	5	0.02	24
YD33		5829 11	62014 63.3	53	Soil	3/12/ 2024	382	N.A	6	<0.5	0.53	0.04	0.02	<2	0.14	<5	0.015	23.5
YD34		5836 48.7	62028 34.1	53	Soil	3/12/ 2024	190	N.A	6	<0.5	0.49	0.165	0.005	4	0.09	15	0.015	42.5
YD35		5842 81.3	62039 23.9	53	Soil	3/12/ 2024	143	N.A	6	<0.5	1	0.155	0.01	<2	0.11	20	0.03	265
YD36		5851 07.4	62050 08.9	53	Soil	3/12/ 2024	538	N.A	7	<0.5	1.13	0.125	0.01	4	0.21	15	0.03	87
YD37		5851 36.9	62050 90.2	53	Outcrop Gneiss	3/12/ 2024	605	N.A	3	<0.5	4.91	0.08	0.01	<2	1.97	10	0.04	301
YD37	Rpt	5851 36.9	62050 90.2	53	Outcrop Gneiss	3/12/ 2024	N.A	N.A	3	<0.5	4.78	0.08	0.01	<2	1.96	10	0.03	304
YD38		5841 62.8	62054 29.2	53	Soil	3/12/ 2024	400	N.A	8	<0.5	1.98	0.175	0.005	36	0.12	35	0.02	252
YD39		5841 63.2	62054 30.2	53	Outcrop Calcrete	3/12/ 2024	568	N.A	7	<0.5	0.3	0.29	<0.005	4	1.04	15	0.02	20
YD40		5829 56.7	62056 39	53	Soil	3/12/ 2024	206	N.A	6	<0.5	4.77	0.055	0.015	<2	0.64	5	0.04	250
YD41		5829 56.7	62056 39	53	Outcrop Gneiss	3/12/ 2024	825	N.A	4	<0.5	5.12	0.155	0.025	<2	1.47	15	0.05	350
YD42		5818 12.2	62051 43.4	53	Soil	3/12/ 2024	712	N.A	5	0.5	3.04	0.56	0.045	<2	0.61	10	0.025	194
YD43		5812 83.4	62040 24.9	53	Soil	3/12/ 2024	598	N.A	7	0.5	3.42	0.135	0.04	4	0.43	10	0.035	169
YD44		5806 03.9	62027 61.8	53	Soil	3/12/ 2024	276	N.A	15	<0.5	2.43	0.08	0.025	4	0.3	20	0.04	83.5
YD45		5804 03.5	62014 48	53	Soil	3/12/ 2024	308	N.A	18	<0.5	0.46	0.09	0.015	6	0.11	30	0.03	24.5
YD46		5742 81.7	61966 00	53	Soil	3/12/ 2024	632	N.A	7	<0.5	0.44	0.055	0.01	4	0.1	<5	0.025	15.5
YD47		5741 54.6	61957 51.3	53	Soil	3/12/ 2024	832	N.A	8	<0.5	0.45	0.085	0.005	6	0.09	10	0.015	29.5
YD48		5749 68.5	61947 99.8	53	Soil	3/12/ 2024	206	95.1	10	<0.5	0.42	0.13	0.01	6	0.07	10	0.02	33.5

Sample ID	East GDA 2020	North GDA 2020	Zone	Sample Type	Date Collected	Wet Wt	- 75um	Re	Sb	Sc	Se	Si	Sn	Sr	Ta	Te	Th
Unit						grams	%	ppm	ppm	ppm	ppm	%	ppm	ppm	ppm	ppm	ppm
Analysis Scheme						PR 002	PR 403	LB1 02	LB1 02	LB1 01	LB1 02	LB1 01	LB1 02	LB1 02	LB1 02	LB1 02	LB1 02

Ground Floor, Space Lab Building - Lot Fourteen  
4 Frome Road Adelaide South Australia 5000

lincolnminerals.com.au

Community Enquiries  
community@lincolnminerals.com.au  
Investor Enquiries  
investors@lincolnminerals.com.au



## ASX ANNOUNCEMENT

16

Detection Limit						1	0.0 1	0.1	1	5	10	0.0 05	10	5	2	5	0.5
YD01	5708 04.6	61867 02.1	53	Soil	1/12/2 024	520	N.A .	<0. 1	<1	15	<10	32. 5	<10	60	<2	<5	16
YD02	5709 73.1	61869 69.8	53	Outcrop / Granite	1/12/2 024	544	N.A .	<0. 1	<1	<5	<10	34. 9	<10	35	<2	<5	5
YD03	5710 00	61868 15.9	53	Soil	1/12/2 024	506	N.A .	<0. 1	<1	5	<10	34. 9	<10	60	<2	<5	11
YD04	5710 35.3	61866 78.5	53	Outcrop Quartz Vein	1/12/2 024	630	N.A .	<0. 1	<1	<5	<10	44. 9	<10	<5	<2	<5	2
YD05	5709 80	61865 60.4	53	Soil	1/12/2 024	453	N.A .	<0. 1	<1	25	<10	21. 4	<10	50	2	<5	19. 5
YD06	5708 84.4	61866 12.4	53	Soil	1/12/2 024	438	N.A .	<0. 1	<1	20	<10	30. 5	<10	80	<2	<5	15. 5
YD06 Rpt	5708 84.4	61866 12.4	53	Soil	1/12/2 024	N.A .	N.A .	<0. 1	<1	20	<10	30. 1	<10	85	<2	<5	16
YD07	5708 91.6	61866 44.7	53	Float Granite	1/12/2 024	858	N.A .	<0. 1	<1	<5	<10	37. 8	<10	55	<2	<5	4.5
YD08	5709 12	61864 47.4	53	Outcrop Quartz Vein	1/12/2 024	898	95. 7	<0. 1	<1	<5	<10	46	<10	<5	<2	<5	<0. 5
YD09	5707 80	61863 88.3	53	Outcrop Sandstone	1/12/2 024	104 2	N.A .	<0. 1	<1	20	<10	22. 3	<10	50	<2	<5	24. 5
YD10	5708 33.9	61862 53.8	53	Outcrop Saprock	1/12/2 024	956	N.A .	<0. 1	<1	10	<10	34. 5	<10	25	<2	<5	22. 5
YD11	5703 07.5	61867 19.3	53	Soil	1/12/2 024	439	N.A .	<0. 1	<1	10	<10	32. 1	<10	50	<2	<5	33. 5
YD12	5702 02.6	61864 62.3	53	Soil	1/12/2 024	392	N.A .	<0. 1	<1	20	<10	30. 6	<10	60	<2	<5	20
YD13	5701 31.8	61864 46.5	53	Float Schist	1/12/2 024	965	N.A .	<0. 1	<1	10	<10	33. 9	<10	65	<2	<5	23. 5
YD14	5702 02.8	61864 60.8	53	Float Schist	1/12/2 024	109 8	N.A .	<0. 1	<1	<5	<10	34. 3	<10	50	<2	<5	27
YD15	5700 54.5	61862 88.9	53	Outcrop Gneiss	1/12/2 024	932	N.A .	<0. 1	<1	<5	<10	35. 1	<10	70	<2	<5	17
YD16	5699 91	61863 13.3	53	Outcrop Gneiss	1/12/2 024	119 9	N.A .	<0. 1	<1	<5	<10	34. 7	<10	70	<2	<5	25. 5
YD17	5699 82.6	61864 60.1	53	Soil	1/12/2 024	704	N.A .	<0. 1	<1	<5	<10	38. 4	<10	55	<2	<5	13
YD18	5699 13.2	61861 65	53	Outcrop Gneiss	1/12/2 024	771	N.A .	<0. 1	<1	10	<10	24. 6	<10	30	<2	<5	33. 5
YD19	5700 62	61863 99.8	53	Soil	1/12/2 024	618	N.A .	<0. 1	<1	<5	<10	37. 4	<10	60	<2	<5	32. 5
YD20	5702 89.6	61865 04.3	53	Outcrop Quartzite	1/12/2 024	767	N.A .	<0. 1	<1	<5	<10	45. 2	<10	<5	<2	<5	4

Ground Floor, Space Lab Building - Lot Fourteen  
4 Frome Road Adelaide South Australia 5000

[lincolnminerals.com.au](http://lincolnminerals.com.au)

Community Enquiries

[community@lincolnminerals.com.au](mailto:community@lincolnminerals.com.au)

Investor Enquiries

[investors@lincolnminerals.com.au](mailto:investors@lincolnminerals.com.au)

**Lincoln**  
Minerals

For personal use only



## ASX ANNOUNCEMENT

17

YD21	5705 10.8	61862 32.8	53	Float Quartzite	1/12/2 024	437	N.A	<0. 1	<1	<5	<10	45. 1	<10	<5	<2	<5	2
YD22	5704 46.2	61861 42.5	53	Outcrop Pegmatite	1/12/2 024	105 1	N.A	<0. 1	<1	<5	<10	36. 1	<10	65	<2	<5	5.5
YD23	5704 15.1	61861 18.8	53	Outcrop Gneiss	1/12/2 024	845	N.A	<0. 1	<1	15	<10	30. 4	<10	100	<2	<5	24. 5
YD24	5703 88.1	61859 14.9	53	Outcrop Saprock	1/12/2 024	662	N.A	<0. 1	<1	<5	<10	44. 3	<10	15	2	<5	11. 5
YD25	5695 63.8	61856 27.4	53	Outcrop Gneiss	1/12/2 024	957	N.A	<0. 1	<1	10	<10	33. 3	<10	60	<2	<5	26. 5
YD26	5695 08.3	61856 34.6	53	Outcrop Gneiss	1/12/2 024	812	N.A	<0. 1	<1	10	<10	33. 7	<10	50	4	<5	19. 5
YD27	5689 48.9	61847 97	53	Outcrop Gneiss	1/12/2 024	880	N.A	<0. 1	<1	10	<10	32. 5	<10	65	<2	<5	25
YD28	5799 41.7	61898 52.5	53	Outcrop Gneiss	3/12/2 024	868	96. 9	<0. 1	<1	<5	<10	43. 6	<10	35	<2	<5	12. 5
YD28 Rpt	5799 41.7	61898 52.5	53	Outcrop Gneiss	3/12/2 024	N.A	N.A	<0. 1	<1	<5	<10	43	<10	35	<2	<5	13
YD29	5799 46.8	61899 01.6	53	Soil	3/12/2 024	799	N.A	<0. 1	<1	<5	<10	43	<10	10	<2	<5	9.5
YD30	5802 40.2	61901 35.7	53	Soil	3/12/2 024	380	N.A	<0. 1	<1	10	<10	38	<10	15	<2	<5	18. 5
YD31	5807 91.1	61905 57.5	53	Soil	3/12/2 024	576	N.A	<0. 1	<1	<5	<10	40. 3	<10	15	<2	<5	21
YD32	5825 09.5	62010 04.5	53	Soil	3/12/2 024	374	N.A	<0. 1	<1	10	<10	33. 8	<10	25	2	<5	10. 5
YD33	5829 11	62014 63.3	53	Soil	3/12/2 024	382	N.A	<0. 1	<1	<5	<10	41. 1	<10	15	<2	<5	10
YD34	5836 48.7	62028 34.1	53	Soil	3/12/2 024	190	N.A	<0. 1	<1	20	<10	23. 4	<10	30	2	<5	32. 5
YD35	5842 81.3	62039 23.9	53	Soil	3/12/2 024	143	N.A	<0. 1	<1	10	<10	29. 4	<10	30	4	<5	43
YD36	5851 07.4	62050 08.9	53	Soil	3/12/2 024	538	N.A	<0. 1	<1	10	<10	30. 4	<10	35	<2	<5	50. 5
YD37	5851 36.9	62050 90.2	53	Outcrop Gneiss	3/12/2 024	605	N.A	<0. 1	<1	<5	<10	33. 5	<10	45	<2	<5	42
YD37 Rpt	5851 36.9	62050 90.2	53	Outcrop Gneiss	3/12/2 024	N.A	N.A	<0. 1	<1	<5	<10	32. 5	<10	45	<2	<5	41
YD38	5841 62.8	62054 29.2	53	Soil	3/12/2 024	400	N.A	<0. 1	<1	30	<10	29. 6	<10	20	6	<5	12
YD39	5841 63.2	62054 30.2	53	Outcrop Calcrete	3/12/2 024	568	N.A	<0. 1	<1	15	<10	20. 5	<10	35	2	<5	44
YD40	5829 56.7	62056 39	53	Soil	3/12/2 024	206	N.A	<0. 1	<1	<5	<10	34. 8	<10	45	<2	<5	75. 5

Ground Floor, Space Lab Building - Lot Fourteen  
4 Frome Road Adelaide South Australia 5000

[lincolnminerals.com.au](http://lincolnminerals.com.au)

Community Enquiries

[community@lincolnminerals.com.au](mailto:community@lincolnminerals.com.au)

Investor Enquiries

[investors@lincolnminerals.com.au](mailto:investors@lincolnminerals.com.au)

**Lincoln**  
Minerals

## ASX ANNOUNCEMENT

18

YD41	5829 56.7	62056 39	53	Outcrop Gneiss	3/12/2 024	825	N.A	<0. 1	<1	<5	<10	32. 8	<10	85	2	<5	53
YD42	5818 12.2	62051 43.4	53	Soil	3/12/2 024	712	N.A	<0. 1	<1	10	<10	32. 1	<10	100	<2	<5	28
YD43	5812 83.4	62040 24.9	53	Soil	3/12/2 024	598	N.A	<0. 1	<1	5	<10	34. 6	<10	75	<2	<5	32
YD44	5806 03.9	62027 61.8	53	Soil	3/12/2 024	276	N.A	<0. 1	<1	10	<10	31. 5	<10	130	2	<5	28
YD45	5804 03.5	62014 48	53	Soil	3/12/2 024	308	N.A	<0. 1	2	15	<10	23	<10	55	2	<5	62. 5
YD46	5742 81.7	61966 00	53	Soil	3/12/2 024	632	N.A	<0. 1	<1	5	<10	26. 4	<10	20	<2	<5	21. 5
YD47	5741 54.6	61957 51.3	53	Soil	3/12/2 024	832	N.A	<0. 1	2	10	<10	31. 6	<10	30	<2	<5	29
YD48	5749 68.5	61947 99.8	53	Soil	3/12/2 024	206	95. 1	<0. 1	<1	15	<10	27. 7	<10	30	<2	<5	25

Sample ID	East GDA 2020	North GDA 2020	Zone	Sample Type	Date Collected	Wet Wt	- 75um	Ti	TI	U	V	W	Y	Zr	La	Ce	Pr
Unit						grams	%	%	ppm	ppm	ppm	ppm	ppm	ppm	ppm	ppm	ppm
Analysis Scheme						PR 002	PR 403	LB1 01	LB1 02	LB1 02	LB1 01	LB1 02	LB1 02	LB1 01	LB1 02	LB1 02	LB1 02
Detection Limit						1	0.01	0.005	3	0.5	20	3	1	20	1	0.5	1
YD01	5708 04.6	61867 02.1	53	Soil	1/12/2 024	520	N.A	0.4 95	<3	3	120	<3	30	180	34	73	8
YD02	5709 73.1	61869 69.8	53	Outcrop / Granite	1/12/2 024	544	N.A	0.0 4	<3	3.5	<20	<3	7	20	14	29. 5	3
YD03	5710 00	61868 15.9	53	Soil	1/12/2 024	506	N.A	0.3	<3	4	40	6	28	140	37	63. 5	9
YD04	5710 35.3	61866 78.5	53	Outcrop Quartz Vein	1/12/2 024	630	N.A	0.0 15	<3	4	<20	<3	4	80	3	4.5	<1
YD05	5709 80	61865 60.4	53	Soil	1/12/2 024	453	N.A	0.6 4	<3	6	140	6	24	240	47	91. 5	10
YD06	5708 84.4	61866 12.4	53	Soil	1/12/2 024	438	N.A	0.8 75	<3	5.5	100	6	27	260	46	87	11
YD06 Rpt	5708 84.4	61866 12.4	53	Soil	1/12/2 024	N.A	N.A	0.8 45	<3	5.5	100	6	29	240	47	89. 5	11
YD07	5708 91.6	61866 44.7	53	Float Granite	1/12/2 024	858	N.A	0.0 15	<3	10	<20	<3	37	20	19	39. 5	4
YD08	5709 12	61864 47.4	53	Outcrop Quartz Vein	1/12/2 024	898	95. 7	0.0 1	<3	<0. 5	<20	<3	<1	<20	<1	2.5	<1
YD09	5707 80	61863 88.3	53	Outcrop Sandstone	1/12/2 024	104 2	N.A	0.5 9	<3	10	140	<3	67	220	56	107	14
YD10	5708 33.9	61862 53.8	53	Outcrop Saprock	1/12/2 024	956	N.A	0.5 15	<3	8.5	100	6	21	160	41	76. 5	9
YD11	5703 07.5	61867 19.3	53	Soil	1/12/2 024	439	N.A	0.2 6	<3	6	40	<3	63	580	83	163	18

Ground Floor, Space Lab Building - Lot Fourteen  
4 Frome Road Adelaide South Australia 5000

[lincolnminerals.com.au](http://lincolnminerals.com.au)

Community Enquiries

[community@lincolnminerals.com.au](mailto:community@lincolnminerals.com.au)

Investor Enquiries

[investors@lincolnminerals.com.au](mailto:investors@lincolnminerals.com.au)

**Lincoln**  
Minerals

## ASX ANNOUNCEMENT

19

YD12	5702 02.6	61864 62.3	53	Soil	1/12/2 024	392	N.A	0.3 7	<3	4	100	<3	41	440	42	80	9
YD13	5701 31.8	61864 46.5	53	Float Schist	1/12/2 024	965	N.A	0.2 7	<3	4	<20	<3	65	420	110	204	22
YD14	5702 02.8	61864 60.8	53	Float Schist	1/12/2 024	109 8	N.A	0.2 45	<3	5	<20	<3	72	500	109	202	22
YD15	5700 54.5	61862 88.9	53	Outcr op Gneis s	1/12/2 024	932	N.A	0.2 55	<3	5	<20	<3	61	500	88	160	18
YD16	5699 91	61863 13.3	53	Outcr op Gneis s	1/12/2 024	119 9	N.A	0.2 55	<3	4.5	<20	<3	61	540	95	185	21
YD17	5699 82.6	61864 60.1	53	Soil	1/12/2 024	704	N.A	0.1 15	<3	3.5	<20	<3	44	280	49	93. 5	11
YD18	5699 13.2	61861 65	53	Outcr op Gneis s	1/12/2 024	771	N.A	0.2 25	<3	4.5	<20	<3	74	480	94	184	21
YD19	5700 62	61863 99.8	53	Soil	1/12/2 024	618	N.A	0.2 05	<3	8	20	<3	107	660	127	247	27
YD20	5702 89.6	61865 04.3	53	Outcr op Quart zite	1/12/2 024	767	N.A	0.0 2	<3	1.5	<20	<3	5	80	8	15. 5	2
YD21	5705 10.8	61862 32.8	53	Float Quatr zite	1/12/2 024	437	N.A	0.0 45	<3	<0. 5	<20	<3	3	<20	5	9.5	<1
YD22	5704 46.2	61861 42.5	53	Outcr op Pegm atite	1/12/2 024	105 1	N.A	0.0 25	<3	6	<20	<3	24	40	13	24. 5	3
YD23	5704 15.1	61861 18.8	53	Outcr op Gneis s	1/12/2 024	845	N.A	0.5 1	<3	6	100	<3	46	280	64	131	14
YD24	5703 88.1	61859 14.9	53	Outcr op Sapro ck	1/12/2 024	662	N.A	0.7 05	<3	2	40	<3	21	440	5	8.5	<1
YD25	5695 63.8	61856 27.4	53	Outcr op Gneis s	1/12/2 024	957	N.A	0.3 05	<3	5	<20	<3	90	660	120	224	25
YD26	5695 08.3	61856 34.6	53	Outcr op Gneis s	1/12/2 024	812	N.A	0.3 7	<3	7.5	<20	<3	81	640	96	190	22
YD27	5689 48.9	61847 97	53	Outcr op Gneis s	1/12/2 024	880	N.A	0.2 95	<3	4.5	<20	<3	75	560	116	221	24
YD28	5799 41.7	61898 52.5	53	Outcr op Gneis s	3/12/2 024	868	96. 9	0.0 5	<3	2	<20	<3	8	160	18	38	4
YD28 Rpt	5799 41.7	61898 52.5	53	Outcr op Gneis s	3/12/2 024	N.A	N.A	0.0 5	<3	2	<20	<3	8	160	19	38. 5	4
YD29	5799 46.8	61899 01.6	53	Soil	3/12/2 024	799	N.A	0.0 85	<3	2	20	<3	10	100	14	27. 5	4
YD30	5802 40.2	61901 35.7	53	Soil	3/12/2 024	380	N.A	0.2 85	<3	2	140	<3	13	180	17	38. 5	4

Ground Floor, Space Lab Building - Lot Fourteen  
4 Frome Road Adelaide South Australia 5000

[lincolnminerals.com.au](http://lincolnminerals.com.au)

Community Enquiries

[community@lincolnminerals.com.au](mailto:community@lincolnminerals.com.au)

Investor Enquiries

[investors@lincolnminerals.com.au](mailto:investors@lincolnminerals.com.au)

**Lincoln**  
Minerals

For personal use only



## ASX ANNOUNCEMENT

20

YD31	5807 91.1	61905 57.5	53	Soil	3/12/2 024	576	N.A	0.2 3	<3	4	40	<3	34	320	43	85. 5	10
YD32	5825 09.5	62010 04.5	53	Soil	3/12/2 024	374	N.A	0.3 65	<3	2	100	6	9	180	10	19	2
YD33	5829 11	62014 63.3	53	Soil	3/12/2 024	382	N.A	0.1 7	<3	2	20	<3	14	240	15	29. 5	4
YD34	5836 48.7	62028 34.1	53	Soil	3/12/2 024	190	N.A	0.5 15	<3	3	140	6	13	180	15	30. 5	3
YD35	5842 81.3	62039 23.9	53	Soil	3/12/2 024	143	N.A	0.2 05	<3	6	40	6	29	160	70	155	17
YD36	5851 07.4	62050 08.9	53	Soil	3/12/2 024	538	N.A	0.3	<3	8.5	120	<3	24	240	36	114	9
YD37	5851 36.9	62050 90.2	53	Outcr op Gneis s	3/12/2 024	605	N.A	0.0 95	<3	7.5	<20	<3	21	120	56	126	14
YD37 Rpt	5851 36.9	62050 90.2	53	Outcr op Gneis s	3/12/2 024	N.A	N.A	0.0 9	<3	7	<20	<3	20	100	54	124	14
YD38	5841 62.8	62054 29.2	53	Soil	3/12/2 024	400	N.A	2.4 9	<3	11. 5	380	9	8	320	12	26	4
YD39	5841 63.2	62054 30.2	53	Outcr op Calcre te	3/12/2 024	568	N.A	0.0 75	<3	11	60	<3	19	160	102	163	17
YD40	5829 56.7	62056 39	53	Soil	3/12/2 024	206	N.A	0.1 5	<3	7.5	<20	<3	34	200	114	250	29
YD41	5829 56.7	62056 39	53	Outcr op Gneis s	3/12/2 024	825	N.A	0.1 4	<3	27. 5	<20	6	50	120	123	258	28
YD42	5818 12.2	62051 43.4	53	Soil	3/12/2 024	712	N.A	0.3	<3	4	60	<3	33	200	63	130	14
YD43	5812 83.4	62040 24.9	53	Soil	3/12/2 024	598	N.A	0.4 6	<3	6	40	6	38	280	72	144	16
YD44	5806 03.9	62027 61.8	53	Soil	3/12/2 024	276	N.A	0.8 55	<3	4	100	<3	21	640	64	111	12
YD45	5804 03.5	62014 48	53	Soil	3/12/2 024	308	N.A	0.7 2	<3	4.5	240	<3	11	800	76	138	13
YD46	5742 81.7	61966 00	53	Soil	3/12/2 024	632	N.A	0.2 3	<3	2	200	<3	11	320	16	33. 5	4
YD47	5741 54.6	61957 51.3	53	Soil	3/12/2 024	832	N.A	0.3 95	<3	2.5	200	<3	14	300	18	35. 5	4
YD48	5749 68.5	61947 99.8	53	Soil	3/12/2 024	206	95. 1	0.5 05	<3	3	200	<3	15	360	20	43. 5	4

Sam ple ID	East GDA 2020	North GDA2 020	Zo ne	Samp le Type	Date Colle cted	Wet Wt	- 75u m	Nd	Sm	Eu	Gd	Tb	Dy	Ho	Er	Tm	Yb
Unit						gra ms	%	pp m	pp m	pp m	pp m	pp m	pp m	pp m	pp m	pp m	pp m
Anal sis Sche me						PR 002	PR 403	LB1 02	LB1 02	LB1 02	LB1 02	LB1 02	LB1 02	LB1 02	LB1 02	LB1 02	LB1 02
Detec tion Limit						1	0.0 1	0.5	0.5	0.5	1	0.5	0.5	1	1	1	1
YD01	5708 04.6	61867 02.1	53	Soil	1/12/2 024	520	N.A	31	6	1.5	6	1	6	1	4	<1	3
YD02	5709 73.1	61869 69.8	53	Outcr op / Granit e	1/12/2 024	544	N.A	8.5	2	0.5	2	<0. 5	1.5	<1	<1	<1	<1

Ground Floor, Space Lab Building - Lot Fourteen  
4 Frome Road Adelaide South Australia 5000

[lincolnminerals.com.au](http://lincolnminerals.com.au)

Community Enquiries

[community@lincolnminerals.com.au](mailto:community@lincolnminerals.com.au)

Investor Enquiries

[investors@lincolnminerals.com.au](mailto:investors@lincolnminerals.com.au)

**Lincoln**  
Minerals

## ASX ANNOUNCEMENT

21

YD03	5710 00	61868 15.9	53	Soil	1/12/2 024	506	N.A	31	6	1.5	6	1	5.5	1	3	<1	3
YD04	5710 35.3	61866 78.5	53	Outcr op Quart z Vein	1/12/2 024	630	N.A	1.5	<0. 5	<0. 5	<1	<0. 5	0.5	<1	<1	<1	<1
YD05	5709 80	61865 60.4	53	Soil	1/12/2 024	453	N.A	36	7	1.5	6	1	5	<1	3	<1	3
YD06	5708 84.4	61866 12.4	53	Soil	1/12/2 024	438	N.A	38. 5	7.5	1.5	7	1	6	1	3	<1	3
YD06 Rpt	5708 84.4	61866 12.4	53	Soil	1/12/2 024	N.A	N.A	40. 5	7	1.5	7	1	6.5	1	4	<1	3
YD07	5708 91.6	61866 44.7	53	Float Granit e	1/12/2 024	858	N.A	17. 5	4	1	5	1	5.5	1	4	<1	3
YD08	5709 12	61864 47.4	53	Outcr op Quart z Vein	1/12/2 024	898	95. 7	1	<0. 5	<0. 5	<1	<0. 5	<0. 5	<1	<1	<1	<1
YD09	5707 80	61863 88.3	53	Outcr op Sands tone	1/12/2 024	104 2	N.A	45	7.5	2	10	2	12. 5	3	8	1	8
YD10	5708 33.9	61862 53.8	53	Outcr op Sapro ck	1/12/2 024	956	N.A	30. 5	5.5	<0. 5	5	1	4	<1	2	<1	2
YD11	5703 07.5	61867 19.3	53	Soil	1/12/2 024	439	N.A	61. 5	11	1.5	12	2	11	2	7	<1	6
YD12	5702 02.6	61864 62.3	53	Soil	1/12/2 024	392	N.A	33	6	1.5	7	1	7	2	5	<1	5
YD13	5701 31.8	61864 46.5	53	Float Schist	1/12/2 024	965	N.A	83	15. 5	3	16	2.5	12. 5	3	8	1	7
YD14	5702 02.8	61864 60.8	53	Float Schist	1/12/2 024	109 8	N.A	82	15	2.5	15	2.5	13	3	8	1	8
YD15	5700 54.5	61862 88.9	53	Outcr op Gneis s	1/12/2 024	932	N.A	65. 5	12	3	12	2	10. 5	2	7	<1	6
YD16	5699 91	61863 13.3	53	Outcr op Gneis s	1/12/2 024	119 9	N.A	72. 5	13	2.5	14	2	11	2	7	1	6
YD17	5699 82.6	61864 60.1	53	Soil	1/12/2 024	704	N.A	38	7	1.5	8	1.5	7.5	2	5	<1	4
YD18	5699 13.2	61861 65	53	Outcr op Gneis s	1/12/2 024	771	N.A	74. 5	13	1.5	14	2.5	13. 5	3	8	1	8
YD19	5700 62	61863 99.8	53	Soil	1/12/2 024	618	N.A	99. 5	18	2.5	20	3	19	4	11	2	10
YD20	5702 89.6	61865 04.3	53	Outcr op Quart zite	1/12/2 024	767	N.A	6	1.5	<0. 5	1	<0. 5	1	<1	<1	<1	<1
YD21	5705 10.8	61862 32.8	53	Float Quatr zite	1/12/2 024	437	N.A	3	<0. 5	<0. 5	<1	<0. 5	<0. 5	<1	<1	<1	<1
YD22	5704 46.2	61861 42.5	53	Outcr op Pegm atite	1/12/2 024	105 1	N.A	9.5	2	0.5	3	<0. 5	4	<1	3	<1	3
YD23	5704 15.1	61861 18.8	53	Outcr op Gneis s	1/12/2 024	845	N.A	53. 5	9.5	2	10	1.5	7.5	2	6	<1	5

Ground Floor, Space Lab Building - Lot Fourteen  
4 Frome Road Adelaide South Australia 5000

[lincolnminerals.com.au](http://lincolnminerals.com.au)

Community Enquiries

[community@lincolnminerals.com.au](mailto:community@lincolnminerals.com.au)

Investor Enquiries

[investors@lincolnminerals.com.au](mailto:investors@lincolnminerals.com.au)

**Lincoln**  
Minerals

For personal use only



## ASX ANNOUNCEMENT

22

YD24	5703 88.1	61859 14.9	53	Outcrop Saprock	1/12/2 024	662	N.A	3	1	<0. 5	1	<0. 5	3	<1	3	<1	3
YD25	5695 63.8	61856 27.4	53	Outcrop Gneiss	1/12/2 024	957	N.A	93	17. 5	3.5	18	3	16. 5	4	10	1	9
YD26	5695 08.3	61856 34.6	53	Outcrop Gneiss	1/12/2 024	812	N.A	77. 5	14. 5	2.5	16	2.5	14	3	10	1	8
YD27	5689 48.9	61847 97	53	Outcrop Gneiss	1/12/2 024	880	N.A	89. 5	16	3	17	2.5	14	3	9	1	7
YD28	5799 41.7	61898 52.5	53	Outcrop Gneiss	3/12/2 024	868	96. 9	15	2.5	<0. 5	2	<0. 5	1.5	<1	<1	<1	<1
YD28 Rpt	5799 41.7	61898 52.5	53	Outcrop Gneiss	3/12/2 024	N.A	N.A	15	2.5	<0. 5	2	<0. 5	1.5	<1	<1	<1	<1
YD29	5799 46.8	61899 01.6	53	Soil	3/12/2 024	799	N.A	11. 5	2	<0. 5	2	<0. 5	1.5	<1	<1	<1	<1
YD30	5802 40.2	61901 35.7	53	Soil	3/12/2 024	380	N.A	13. 5	2.5	<0. 5	2	<0. 5	2.5	<1	2	<1	<1
YD31	5807 91.1	61905 57.5	53	Soil	3/12/2 024	576	N.A	34. 5	7	0.5	7	1	6	1	4	<1	3
YD32	5825 09.5	62010 04.5	53	Soil	3/12/2 024	374	N.A	7.5	1.5	<0. 5	2	<0. 5	1.5	<1	<1	<1	<1
YD33	5829 11	62014 63.3	53	Soil	3/12/2 024	382	N.A	11. 5	2	<0. 5	2	<0. 5	2.5	<1	2	<1	2
YD34	5836 48.7	62028 34.1	53	Soil	3/12/2 024	190	N.A	10. 5	2	0.5	2	<0. 5	2	<1	2	<1	2
YD35	5842 81.3	62039 23.9	53	Soil	3/12/2 024	143	N.A	59	11	0.5	9	1.5	6	1	3	<1	2
YD36	5851 07.4	62050 08.9	53	Soil	3/12/2 024	538	N.A	31	6.5	1	5	1	5	1	3	<1	2
YD37	5851 36.9	62050 90.2	53	Outcrop Gneiss	3/12/2 024	605	N.A	51	10	0.5	8	1	4.5	<1	2	<1	<1
YD37 Rpt	5851 36.9	62050 90.2	53	Outcrop Gneiss	3/12/2 024	N.A	N.A	48. 5	10	0.5	8	1	4.5	<1	2	<1	<1
YD38	5841 62.8	62054 29.2	53	Soil	3/12/2 024	400	N.A	11. 5	2	<0. 5	2	<0. 5	2	<1	<1	<1	<1
YD39	5841 63.2	62054 30.2	53	Outcrop Calcrete	3/12/2 024	568	N.A	44. 5	6	0.5	4	<0. 5	3	<1	2	<1	2
YD40	5829 56.7	62056 39	53	Soil	3/12/2 024	206	N.A	99. 5	18	0.5	15	2	7.5	1	3	<1	2
YD41	5829 56.7	62056 39	53	Outcrop Gneiss	3/12/2 024	825	N.A	88. 5	15. 5	1	13	2	9	2	5	<1	3
YD42	5818 12.2	62051 43.4	53	Soil	3/12/2 024	712	N.A	52	9	1.5	8	1.5	6	1	4	<1	3
YD43	5812 83.4	62040 24.9	53	Soil	3/12/2 024	598	N.A	56. 5	10	1.5	9	1.5	7	2	4	<1	4
YD44	5806 03.9	62027 61.8	53	Soil	3/12/2 024	276	N.A	38	5.5	1	5	1	4	<1	3	<1	2

Ground Floor, Space Lab Building - Lot Fourteen  
4 Frome Road Adelaide South Australia 5000

[lincolnminerals.com.au](http://lincolnminerals.com.au)

Community Enquiries

[community@lincolnminerals.com.au](mailto:community@lincolnminerals.com.au)

Investor Enquiries

[investors@lincolnminerals.com.au](mailto:investors@lincolnminerals.com.au)

**Lincoln**  
Minerals

## ASX ANNOUNCEMENT

23

YD45	5804 03.5	62014 48	53	Soil	3/12/2 024	308	N.A .	36. 5	4.5	0.5	3	<0. 5	2.5	<1	<1	<1	<1
YD46	5742 81.7	61966 00	53	Soil	3/12/2 024	632	N.A .	12. 5	2	<0. 5	2	<0. 5	2	<1	<1	<1	<1
YD47	5741 54.6	61957 51.3	53	Soil	3/12/2 024	832	N.A .	14	2.5	0.5	3	<0. 5	2.5	<1	2	<1	2
YD48	5749 68.5	61947 99.8	53	Soil	3/12/2 024	206	95. 1	14. 5	2.5	0.5	3	<0. 5	2.5	<1	2	<1	2

Ground Floor, Space Lab Building - Lot Fourteen  
4 Frome Road Adelaide South Australia 5000

[lincolnminerals.com.au](http://lincolnminerals.com.au)

Community Enquiries  
[community@lincolnminerals.com.au](mailto:community@lincolnminerals.com.au)  
Investor Enquiries  
[investors@lincolnminerals.com.au](mailto:investors@lincolnminerals.com.au)

**Lincoln**  
Minerals

For personal use only