

ASX Announcement | 20th May 2025

Offset gravity anomalies identified at the Oonagalabi Intrusion (Bomb Diggity) target

Key Highlights:

- Multiple gravity anomalies identified coincident with and adjacent to the Bomb Diggity magnetic anomaly.
- Offset magnetic and gravity anomalies are consistent with IOCG and skarn-style deposits, where mineralisation often forms on the margins of intrusive systems.
- Bomb Diggity target, may be interpreted as a potential intrusive feeder linked to Oonagalabi mineralisation.
- Targets prioritised for phase two drilling, with planning underway to test the newly defined high-gravity structural corridor.

Litchfield Minerals Limited (“Litchfield” or the “Company”) (ASX:LMS), a company with a strategic emphasis on critical minerals, is pleased to announce the completion of the Bomb Diggity ground gravity survey at the Oonagalabi Project. The survey, completed in early May, comprised a total of 231 stations on a 200m x 100m grid and covered an area of 1.8km x 2.2km (**Figure 1, Table 1, Appendix 1**).

Managing Director and CEO, Matthew Pustahya, commented:

“The offset between the magnetic high and the newly defined gravity high is particularly important. In many world-class mineral systems — such as IOCG and skarn deposits — the magnetic core represents the unaltered intrusive, while the denser, mineralised zones occur along structural corridors that are often just offset from the magnetic source. These gravity highs can represent zones of intense alteration, sulphide accumulation or skarn development — all of which are key indicators for copper-zinc mineralisation.

This kind of anomaly alignment gives us strong technical confidence that Bomb Diggity could represent a feeder structure or mineralised halo to the Oonagalabi system. In our view, this target has moved from being a speculative large anomaly to a high priority target that requires follow-up and will likely be drilled after a VTEM survey is conducted.

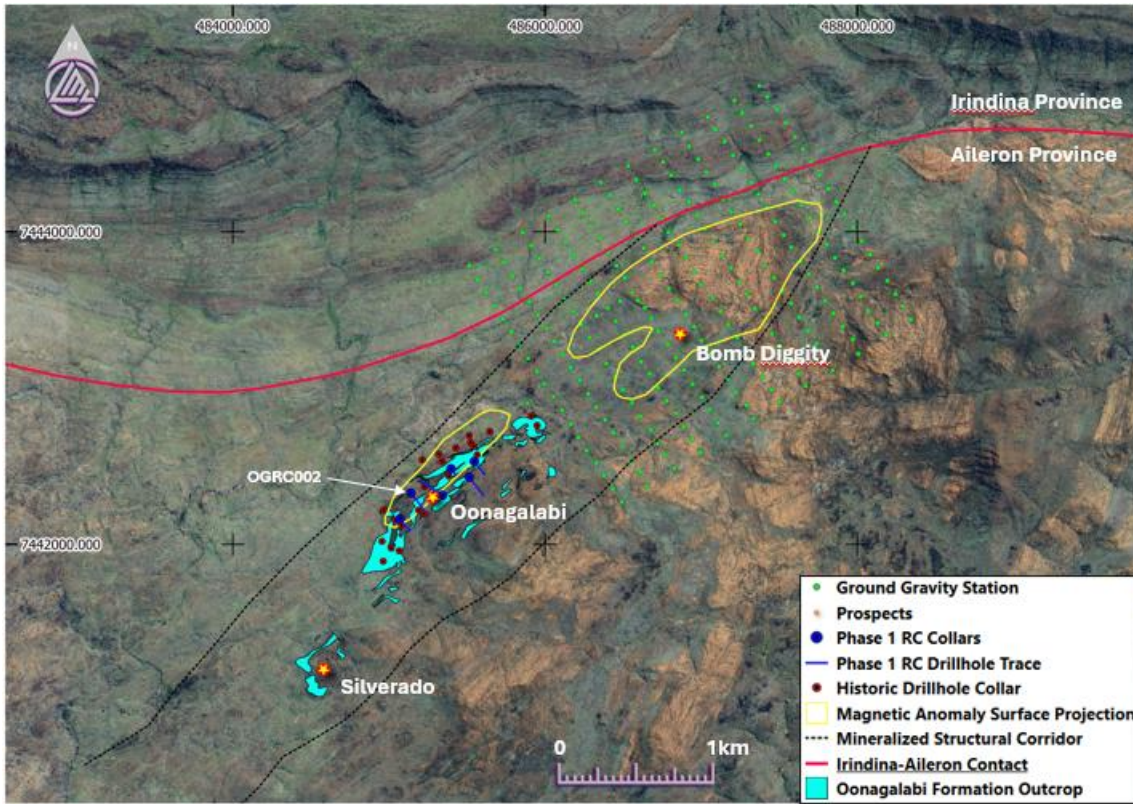


Figure 1. Google satellite image showing the location of ground gravity stations, outcropping Oonagalabi Formation and the dominant magnetic anomalies projected to surface.

Bomb Diggity Prospect

The Bomb Diggity prospect is located approximately 1.5km northeast of the main outcropping mineralised zones at Oonagalabi and is defined by a high intensity, northeast-plunging, pipe-like magnetic anomaly (**Figures 1 to 3**). The anomaly is not exposed at surface and is obscured by mafic granulite and quartz-feldspar gneiss.

The magnetic anomaly sits within a northeast-trending structural corridor that extends into the Oonagalabi prospect to the southwest and is truncated by the northwest dipping Irindina – Aileron Province thrust contact in the northeast. It is interpreted that the Bomb Diggity and Oonagalabi magnetic anomalies formed at the same time and appear to have a genetic link with observed mineralisation. This is particularly evident in OGRC002¹, where intense Bi-Co anomalous magnetite alteration appears to replace earlier Cu-Zn mineralisation.

¹ Litchfield ASX Announcement 11th April 2025. Oonagalabi drilling confirms Broad Sulphide Mineralisation

The magnetic anomaly is interpreted as either an intrusion that contributed heat/fluid/metal to the sediment-hosted / skarn-type Oonagalabi system or, alternatively, as a later discrete magmatic-hydrothermal event that overprints the earlier Oonagalabi mineralisation.

Gravity Data

Data processing to remove the regional gravity field has identified four +0.5mGal residual gravity anomalies at the Bomb Diggity prospect (A – D, **Figure 2**). Three-dimensional inversion modelling was completed to define the subsurface geometry of the observed anomalies and to calculated densities (**Figure 3**).

Modelling shows that anomalies A and B have a syncline geometry, are located at the top of the interpreted Bomb Diggity magnetic anomaly and have densities exceeding 2.77 SG. Anomaly C is located adjacent to the southeastern flank of the Bomb Diggity magnetic anomaly and is associated with a string of small magnetic anomalies with no depth persistence. Anomaly D is located above the thrust plane within the Irindina Province and has no associated magnetic anomaly. Both anomalies C and D have central cores that exceed 2.8 SG.

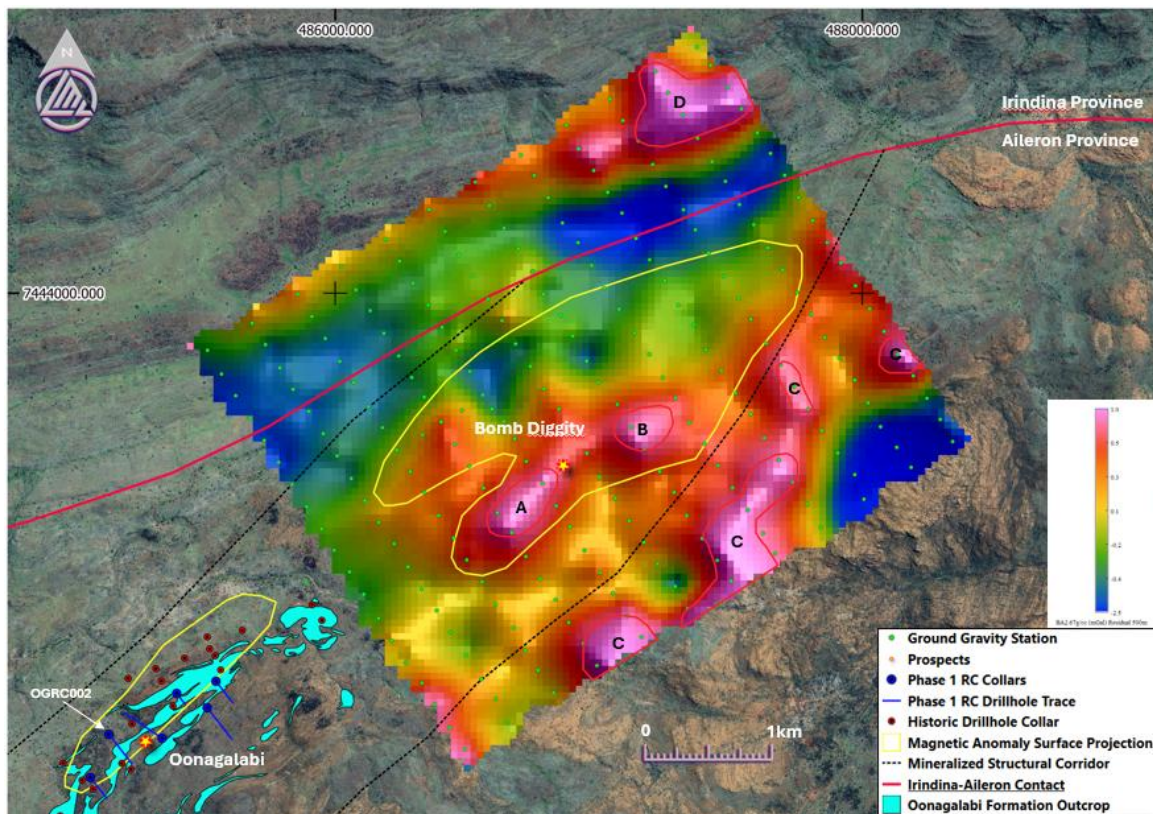


Figure 2. BA267_Res500m_H_NEsun residual gravity image of the Bomb Diggity ground gravity survey showing the main gravity anomalies.

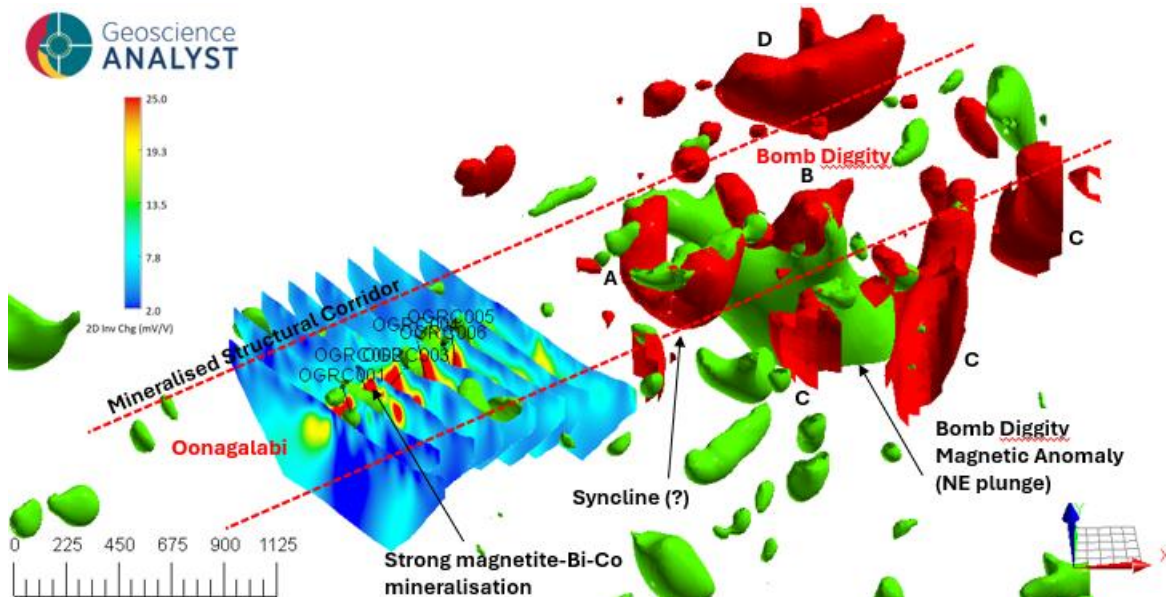


Figure 3. Magnetic (green, +0.022 mesh) and gravity (red, +2.77 SG) three-dimensional inversion models and the Oonagalabi two-dimensional IP chargeability inversion sections (looking north). The Oonagalabi and Bomb Diggity zones are interpreted to sit within a northeast-trending mineralised structural zone.

Specific Gravity was calculated from thirty four representative hand samples of the main Oonagalabi lithologies, alteration and mineralisation (**Table 1, Appendix 1**). Data indicates that the Bomb Diggity gravity anomalies exceed the densities of the main country rocks within the project (quartz-feldspar-biotite schist and Lower Florence Schist) and are close to the densities calculated for marble and some calc-silicate alteration within the Oonagalabi Formation.

It is interpreted that gravity anomalies A and B are associated with folded Oonagalabi Formation and could potentially indicate a +1km northeastern extension to the mineralised system. The location of these two anomalies at the top of an interpreted magnetic intrusion significantly increases the prospectivity of the Bomb Diggity area.

Anomalies C and D are located adjacent to the main Bomb Diggity magnetic anomaly and it is unclear if these anomalies are related to lithological units (e.g.; mafic granulite) or alteration/mineralisation immediately adjacent to the main magnetic anomaly. Offset magnetic and gravity anomalies are a defining characteristic of many IOCG-type deposits and represent compelling drill-ready exploration targets.



Rock Type	Lith/Alt	Density
Quartz-feldspar-biotite schist	Country rock	2.62
Garnet quartzite	Country rock	2.73
Lower Florence Schist	Country rock	2.74
Massive calc-silicate (stubby hornblende)	Alteration	2.78
Marble w/ disseminated olivine	Country rock	2.80
Massive coarse-grained anthophyllite	Alteration	2.91
Mafic Granulite (hb-feld)	Country rock	3.06
Moderate Magnetite, massive pyroxene, hornblende, magnetite rock	Alteration	3.14
Massive calc-silicate	Alteration	3.19
Massive garnet rock	Alteration	3.41
High magnetite, massive pyroxene, hornblende, magnetite rock	Alteration	3.68

Table 1. Average densities (Specific Gravity) of the main Oonagalabi lithologies and alteration types.

Next Steps

Exploration to date has identified mineralised Oonagalabi Formation over at least 2.3km of strike, potentially up to 3.6km if Anomalies A and B represent Oonagalabi Formation. Phase 1 of the RC drilling showed a strong correlation between disseminated sulphide mineralisation and IP chargeability anomalies and mapping / geochemical sampling indicates that almost all of the outcropping Oonagalabi Formation is mineralised.

These observations indicate that Oonagalabi has significant scale and that a significant volume of hydrothermal fluids would be required to produce the observed alteration and mineralisation. It is interpreted that somewhere within the system, potentially the Bomb Diggity magnetic anomaly, is the main feeder zone/structure and this is most likely to have a higher sulphide concentration than the peripheral mineralised zones (potentially Oonagalabi and even more distal at Silverado).

The next step at Oonagalabi is to fly a tenement-wide VTEM survey to define conductors that might be related to semi-massive and massive sulphides. The Bomb Diggity gravity anomalies will be drill-tested in Phase 2 drilling if the VTEM survey identifies coincident conductive anomalies.

Cautionary Statement

This announcement contains forward-looking statements that involve known and unknown risks, uncertainties, and other factors that may cause actual results, performance, or achievements to differ materially from those expressed or implied. Such statements include but are not limited to, interpretations of geophysical data, planned exploration activities, and potential mineralisation outcomes. Forward-looking statements are based on Litchfield Minerals Limited's current expectations, beliefs, and assumptions, which are subject to change in light of new information, future events, and market conditions. While the Company believes that such expectations and assumptions are reasonable, they are inherently subject to business, geological, regulatory, and operational risks. Further work, including drilling, is required to determine the economic significance of any anomalies identified. Investors should not place undue reliance on forward-looking statements. Litchfield Minerals Limited disclaims any obligation to update or revise any forward-looking statements to reflect events or circumstances after the date of this announcement, except as required by law.

About Litchfield Minerals

Litchfield Minerals is a critical mineral explorer, primarily searching for base metals and uranium out of the Northern Territory of Australia. Our mission is to be a pioneering copper exploration company committed to delivering cost-effective, innovative and sustainable exploration solutions. We aim to unlock the full potential of copper and other mineral resources while minimising environmental impact, ensuring the longevity and affordability of this essential metal for future generations. We are dedicated to involving cutting-edge technology, responsible practices and stakeholder collaboration drives us to continuously redefine the industry standards and deliver value to our investors, communities and the world.

The announcement has been approved by the Board of Directors.

For further information please contact:

Matthew Pustahya

Matthew@litchfieldminerals.com.au

Follow us on:



www.litchfieldminerals.com.au



https://twitter.com/Litchfield_LMS



<https://www.linkedin.com/company/litchfield-minerals-limited/>

Competent Person's Statement

The information in this Presentation that relates to Exploration Results is based on, and fairly represents, information and supporting documentation compiled by Mr Russell Dow (MSc, BScHons Geology), a Competent Person who is a Member of the Australian Institute of Mining and Metallurgy (AUSIMM) and is a full-time employee of Litchfield Minerals Limited. Mr Dow has sufficient experience that is relevant to the style of mineralisation and types of deposits under consideration and to the activity being undertaken to qualify as a Competent Person as defined in the 2012 Edition of the "Australasian Code for Reporting of Exploration Results, Mineral Resources and Ore Reserves" (JORC Code). Mr Dow consents to the inclusion in the report of the matters based on his information in the form and context in which it appears. With regard to the Company's ASX Announcements referenced in the above Announcement, the Company is not aware of any new information or data that materially affects the information included in the Announcements.



LITCHFIELD MINERALS CO. LTD.

Station	Reading	Elevation	Height	X	Y	Gravity	TideCor	Gravity_Av	RepDiff	FreeAir	BA267	BA260	BA250	BA240	BA230	BA290	BA280	BA270
10080	5763.958	836.885	0.15	487003.6	744294.14	978619.577	0.0252	978619.577		48.426	-46.207	-43.741	-40.208	-36.664	-33.121	-54.128	-50.803	-47.296
10081	5764.539	834.492	0.15	486946	7443025.15	978620.158	0.0221	978620.158		48.318	-46.046	-43.587	-40.064	-36.53	-32.996	-53.943	-50.629	-47.131
10082	5766.342	827	0.15	486890.2	7443114.9	978621.962	0.0188	978621.962		47.862	-45.656	-43.219	-39.728	-36.225	-32.723	-53.482	-50.198	-46.732
10083	5767.055	825.809	0.15	486838.5	7443194	978622.675	0.0133	978622.675		48.254	-45.129	-42.696	-39.21	-35.713	-32.215	-52.944	-49.665	-46.204
10084	5767.564	825.855	0.15	486786.9	7443278.4	978623.184	0.0106	978623.184		48.827	-44.562	-42.128	-38.642	-35.144	-31.647	-52.377	-49.097	-45.636
10085	5769.064	817.526	0.15	486724.4	7443362.2	978624.684	0.0052	978624.684		47.807	-44.643	-42.234	-38.783	-35.321	-31.859	-52.379	-49.133	-45.707
10086	5766.231	832.621	0.15	486680.9	7443447.9	978621.852	0.0011	978621.852		49.683	-44.469	-42.015	-38.501	-34.975	-31.449	-52.349	-49.042	-45.552
10087	5761.465	855.419	0.15	486639.5	7443513.6	978617.086	-0.0026	978617.086		51.992	-44.732	-42.211	-38.6	-34.978	-31.356	-52.828	-49.43	-45.845
10088	5761.882	853.316	0.15	486559.1	7443613.7	978617.504	-0.0075	978617.504		51.819	-44.667	-42.152	-38.55	-34.937	-31.324	-52.743	-49.353	-45.777
10089	5771.121	807.209	0.15	486510.6	7443703.3	978626.744	-0.0114	978626.768	0.024	46.907	-44.378	-42	-38.592	-35.173	-31.755	-52.017	-48.812	-45.429
10090	5771.309	809.403	0.15	486458.3	7443783.4	978626.933	-0.0145	978626.933		47.797	-43.737	-41.351	-37.934	-34.506	-31.079	-51.396	-48.182	-44.79
10091	5770.174	815.65	0.15	486405.2	7443869.5	978625.8	-0.0213	978625.8		48.643	-43.596	-41.192	-37.749	-34.294	-30.84	-51.314	-48.075	-44.657
10092	5770.781	814.451	0.15	486352.7	7443954.7	978626.408	-0.0236	978626.408		48.931	-43.172	-40.772	-37.334	-33.885	-30.436	-50.879	-47.645	-44.232
10093	5771.172	813.394	0.15	486295.3	7444037.8	978626.801	-0.0265	978626.801		49.046	-42.937	-40.541	-37.107	-33.662	-30.217	-50.634	-47.403	-43.996
10094	5771.823	812.056	0.15	486243.7	7444120.7	978627.453	-0.029	978627.453		49.335	-42.499	-40.106	-36.677	-33.238	-29.799	-50.183	-46.959	-43.555
10095	5772.208	813.401	0.15	486190.7	7444204.7	978627.84	-0.0312	978627.84		50.186	-41.799	-39.402	-35.968	-32.523	-29.078	-49.496	-46.266	-42.857
10096	5769.689	826.707	0.15	486356.7	7444315.9	978625.337	-0.0418	978625.337		51.855	-41.631	-39.195	-35.705	-32.204	-28.703	-49.454	-46.171	-42.707
10097	5769.503	823.023	0.15	486416.4	7444233.5	978625.145	-0.0395	978625.145		50.477	-42.593	-40.168	-36.693	-33.208	-29.722	-50.381	-47.113	-43.664
10098	5770.301	817.58	0.15	486468.9	7444144.5	978625.941	-0.0383	978625.941		49.541	-42.915	-40.506	-37.054	-33.592	-30.129	-50.652	-47.405	-43.979
10099	5770.258	816.699	0.15	486522.3	7444065.1	978625.911	-0.0431	978625.911		49.192	-43.164	-40.758	-37.31	-33.851	-30.393	-50.893	-47.65	-44.227
10100	5770.359	814.855	0.15	486579.4	7443977.4	978626.015	-0.0435	978626.015		48.676	-43.473	-41.072	-37.632	-34.181	-30.73	-51.184	-47.948	-44.533
10101	5768.889	822.534	0.15	486632.2	7443895.5	978624.549	-0.044	978624.549		49.531	-43.484	-41.06	-37.587	-34.104	-30.621	-51.267	-48.001	-44.554
10102	5771.743	810.282	0.15	486684.2	7443807.5	978626.053	0.0889	978626.097	0.045	47.247	-44.387	-41.999	-38.578	-35.146	-31.715	-52.054	-48.837	-45.441
10103	5763.292	853.525	0.15	4867440.2	7443722.5	978617.608	0.0864	978617.608		52.052	-44.458	-41.943	-38.34	-34.726	-31.111	-52.536	-49.145	-45.568
10104	5763.991	851.135	0.15	486791.9	7443636.7	978618.31	0.0844	978618.31		51.966	-44.275	-41.767	-38.174	-34.57	-30.965	-52.33	-48.949	-45.382
10105	5762.789	857.128	0.15	486848.6	7443560.7	978617.109	0.0831	978617.109		52.57	-44.347	-41.821	-38.203	-34.573	-30.944	-52.459	-49.054	-45.462
10106	5767.253	833.259	0.15	486901.5	7443470.2	978621.576	0.0793	978621.576		49.617	-44.607	-42.152	-38.634	-35.105	-31.577	-52.493	-49.183	-45.691
10107	5768.211	827.28	0.15	486954.7	7443393	978622.535	0.0774	978622.535		48.686	-44.864	-42.426	-38.934	-35.431	-31.927	-52.693	-49.408	-45.941
10108	5766.078	835.378	0.15	487001.6	7443302.9	978620.403	0.0743	978620.403		49	-45.464	-43.002	-39.475	-35.938	-32.4	-53.37	-50.051	-46.55
10109	5767.099	828.769	0.15	487062.8	7443222.6	978621.425	0.0719	978621.425		47.935	-45.783	-43.341	-39.842	-36.333	-32.823	-52.606	-50.335	-46.861
10110	5764.811	839.389	0.15	487115.2	7443137	978619.138	0.0686	978619.138		48.874	-46.041	-43.567	-40.024	-36.47	-32.915	-53.985	-50.651	-47.133
10111	5764.677	838.732	0.15	487171.5	7443055.5	978619.004	0.0657	978619.004		48.49	-46.352	-43.88	-40.34	-36.788	-33.236	-54.29	-50.958	-47.443
10112	5758.914	865.902	0.15	487223	7442974	978613.241	0.0623	978613.241		51.064	-46.842	-44.291	-40.635	-36.969	-33.202	-55.038	-51.597	-47.968
10113	5749.296	909.617	0.15	487289.9	7442888.7	978603.623	0.0543	978603.623		54.885	-47.948	-45.268	-41.429	-37.578	-33.727	-56.561	-52.943	-49.131
10114	5756.47	878.305	0.15	487335.9	7442804.2	978610.793	0.0306	978610.796	0.003	52.346	-46.958	-44.37	-40.663	-36.944	-33.225	-55.272	-51.781	-48.1
10115	5755.753	882.013	0.15	487501.9	7442909.3	978610.075	0.0252	978610.075		52.831	-46.891	-44.292	-40.569	-36.835	-33.1	-55.24	-51.734	-48.038
10116	5756.833	877.864	0.15	487449.4	7442986.9	978611.154	0.0208	978611.154		52.676	-46.579	-43.992	-40.287	-36.57	-32.853	-54.889	-51.399	-47.72
10117	5756.465	880.578	0.15	487391.9	7443069.8	978610.786	0.0163	978610.786		53.193	-46.367	-43.772	-40.055	-36.326	-32.598	-54.702	-51.202	-47.512
10118	5757.601	874.725	0.15	487333.8	7443157.1	978611.921	0.0117	978611.921		52.574	-46.326	-43.749	-40.057	-36.353	-32.649	-54.607	-51.13	-47.464
10119	5763.983	843.796	0.15	487286.1	7443245.2	978618.301	0.0036	978618.301		49.461	-45.951	-43.465	-39.903	-36.33	-32.757	-53.937	-50.585	-47.049
10120	5766.573	831.368	0.15	487230.9	7443324	978620.89	-0.0007	978620.89		48.262	-45.749	-43.3	-39.79	-36.269	-32.749	-53.617	-50.315	-46.831
10121	5764.032	847.709	0.15	487172.9	7443407	978618.349	-0.0042	978618.349		50.812	-45.042	-42.544	-38.965	-35.376	-31.786	-53.065	-49.697	-46.145
10122	5763.011	854.14	0.15	487122.6	7443491.9	978617.327	-0.0107	978617.327		51.824	-44.754	-42.238	-38.632	-35.015	-31.398	-52.839	-49.445	-45.865
10123	5761.166	863.482	0.15	487069.9	7443578.2	978615.481	-0.0143	978615.481		52.913	-44.72	-42.176	-38.531	-34.875	-31.218	-52.893	-49.462	-45.843
10124	5758.629	875.349	0.15	486998.8	7443661.8	978612.944	-0.0195	978612.944		54.087	-44.884	-42.305	-38.61	-34.903	-31.197	-53.17	-49.691	-46.022
10125	5757.636	878.886	0.15	486954.1	7443742.3	978611.951	-0.0252	978611.951		54.233	-45.137	-42.547	-38.837	-35.116	-31.395	-53.457	-49.963	-46.28
10126	5764.977	844.196	0.15	486901.2	7443837.2	978619.292	-0.031	978619.292		50.925	-44.533	-42.046	-38.482	-34.907	-31.333	-52.523	-49.17	-45.632
10127	5770.037	819.285	0.15	486855.2	7443915.5	978624.353	-0.0344	978624.353		48.344	-44.304	-41.89	-38.431	-34.962	-31.492	-52.057	-48.804	-45.37
10128	5770.783	816.671	0.15	486790.5	7443995.7	978625.1	-0.037	978625.1		48.332	-44.022	-41.615	-38.167	-34.709	-31.25	-51.75	-48.505	-45.085
10129	5770.285	821.373	0.15	486749.7	7444082.9	978624.632	-0.0488	978624.678	0.047	49.412	-43.472	-41.051	-37.584	-34.105	-30.627	-51.244	-47.983	-44.541
10130	5770.556	821.077	0.15	486694.7	7444167.5	978624.876	-0.0422	978624.876		49.568	-43.282	-40.862	-37.396	-33.919	-30.442	-51.052	-47.791	-44.35
10131	5770.577	821.884	0.15	486640.5	7444245.6	978624.898	-0.0434	978624.898		49.885	-43.056	-40.634	-37.164	-33.684	-30.203	-50.834	-47.57	-44.125
10132	5770.052	827.615	0.15	486585.1	7444331.8	978624.375	-0.0451	978624.375		51.181	-42.406	-39.967	-36.473	-32.968	-29.644	-50.238	-46.951	-43.483
10133	5769.2	836.819	0.15	486531.3	7444420.6	978623.524	-0.0461	978623.524		53.223	-41.402	-38.936	-35.404	-31.86	-28.317	-49.322	-45.998	-42.491
10134	5766.09	850.928	0.15	486703.7	7444522.7	978620.418	-0.048	978620.418		54.531	-41.686	-39.178	-35.586	-31.983	-28			



W.M.L.I.T.C.F.E.L.E.M.I.N.E.R.A.L.S.L.I.M.I.T.E.D.

Station	Reading	Elevation	Height	X	Y	Gravity	TideCor	Gravity_Av	RepDiff	FreeAir	BA267	BA260	BA250	BA240	BA230	BA290	BA280	BA270
10160	5761.478	861.235	0.15	487465.4	7443706.3	978615.214	0.0438	978615.214		52.027	-45.352	-42.814	-39.179	-35.532	-31.885	-53.504	-50.082	-46.472
10161	5760.546	865.155	0.15	487406.6	7443784.8	978614.278	0.0376	978614.278		52.347	-45.474	-42.925	-39.273	-35.61	-31.946	-53.663	-50.225	-46.599
10162	5766.509	835.153	0.15	487360	7443879.7	978620.237	0.0305	978620.237		49.104	-45.334	-42.873	-39.348	-35.811	-32.275	-53.238	-49.921	-46.421
10163	5765.688	840.847	0.15	487302.3	7443954.2	978619.412	0.0233	978619.412		50.079	-45	-42.523	-38.973	-35.412	-31.852	-52.958	-49.618	-46.094
10164	5766.382	838.409	0.15	487250.8	7444047.3	978620.1	0.0144	978620.1		50.07	-44.735	-42.265	-38.725	-35.175	-31.625	-52.67	-49.34	-45.826
10165	5767.563	833.39	0.15	487192.9	7444126.2	978621.25	-0.0537	978621.238	0.012	49.706	-44.533	-42.078	-38.56	-35.03	-31.501	-52.421	-49.11	-45.618
10166	5769.377	821.159	0.15	487141.4	7444207.1	978623.087	0.0012	978623.087	0	47.828	-45.032	-42.612	-39.145	-35.668	-32.19	-52.802	-49.542	-46.1
10167	5758.141	881.291	0.15	487087.8	7444303.1	978611.847	-0.0067	978611.847		55.2	-44.44	-41.843	-38.123	-34.391	-30.66	-52.782	-49.279	-45.586
10168	5755.478	900.103	0.15	487034.1	7444381.5	978609.18	-0.0126	978609.18		58.385	-43.376	-40.724	-36.925	-33.114	-29.303	-51.898	-48.319	-44.546
10169	5760.06	883.003	0.15	486980.7	7444464.5	978613.76	-0.017	978613.76		57.737	-42.096	-39.495	-35.767	-32.029	-28.29	-50.455	-46.945	-43.245
10170	5762.597	871.572	0.15	486923.4	7444547.1	978616.294	-0.0222	978616.294		56.792	-41.752	-39.184	-35.505	-31.815	-28.124	-50.003	-46.539	-42.886
10171	5756.569	901.94	0.15	486876.5	7444635.2	978610.263	-0.0279	978610.263		60.184	-41.784	-39.126	-35.319	-31.501	-27.682	-50.323	-46.736	-42.957
10172	5752.061	924.244	0.15	487042.5	7444734.8	978605.751	-0.0355	978605.751		62.614	-41.869	-39.146	-35.245	-31.332	-27.419	-50.62	-46.944	-43.07
10173	5761.333	876.536	0.15	487091.8	7444654	978615.021	-0.0414	978615.021		57.114	-41.991	-39.408	-35.708	-31.996	-28.285	-50.288	-46.804	-43.13
10174	5763.218	866.828	0.15	487149.5	7444575.9	978616.905	-0.0441	978616.905		55.956	-42.054	-39.499	-35.84	-32.17	-28.5	-50.259	-46.814	-43.181
10175	5762.284	867.972	0.15	487204.2	7444487.6	978615.97	-0.0466	978615.97		55.322	-42.817	-40.259	-36.595	-32.92	-29.245	-51.032	-47.583	-43.945
10176	5765.706	843.63	0.15	487254.7	7444404.4	978619.392	-0.0495	978619.392		51.183	-44.211	-41.725	-38.163	-34.591	-31.018	-52.195	-48.844	-45.308
10177	5768.169	829.805	0.15	487321.4	7444315.7	978621.855	-0.0511	978621.855		49.328	-44.507	-42.062	-38.559	-35.045	-31.531	-52.36	-49.064	-45.587
10178	5768.921	824.784	0.15	487366.7	7444239.8	978622.607	-0.0523	978622.607	0.006	48.479	-44.789	-42.358	-38.876	-35.384	-31.891	-52.594	-49.319	-45.862
10179	5768.662	833.658	0.15	487416.5	7444151.9	978620.78	0.0357	978620.815	0.035	49.38	-44.889	-42.432	-38.913	-35.383	-31.853	-52.779	-49.467	-45.974
10180	5767.388	836.416	0.15	487473.8	7444063.7	978620.245	-0.0243	978620.219	0.026	49.583	-44.997	-42.532	-39.001	-35.459	-31.917	-52.913	-49.59	-46.085
10181	5766.166	845.457	0.15	487530.1	7443979.9	978618.297	0.0431	978618.297		50.402	-45.198	-42.706	-39.137	-35.557	-31.977	-53.199	-49.841	-46.298
10182	5764.726	853.274	0.15	487577	7443900.7	978616.865	0.0473	978616.865		51.336	-45.146	-42.631	-39.029	-35.416	-31.803	-53.222	-49.832	-46.256
10183	5763.665	858.14	0.15	487635.9	7443810.2	978615.81	0.0504	978615.81		51.729	-45.301	-42.772	-39.15	-35.516	-31.883	-53.423	-50.014	-46.417
10184	5764.809	851.892	0.15	487690.4	7443728.3	978616.959	0.0532	978616.959		50.902	-45.424	-42.914	-39.317	-35.71	-32.103	-53.487	-50.102	-46.532
10185	5763.978	854.367	0.15	487741	7443645.6	978616.137	0.0578	978616.137		50.795	-45.81	-43.292	-39.686	-36.068	-32.45	-53.896	-50.502	-46.921
10186	5762.387	861.246	0.15	487795.5	7443559.3	978614.55	0.0602	978614.55		51.28	-46.101	-43.563	-39.927	-36.28	-32.634	-54.252	-50.83	-47.221
10187	5761.773	860.694	0.15	487846	7443478.2	978613.941	0.0626	978613.941		50.453	-46.865	-44.329	-40.696	-37.052	-33.407	-55.012	-51.592	-47.985
10188	5766.357	883.641	0.15	487906.7	7443393.9	978608.533	0.0662	978608.533		52.076	-47.829	-45.225	-41.495	-37.754	-34.013	-56.194	-52.681	-48.978
10189	5747.09	925.427	0.15	487971.4	7443312.1	978599.275	0.0705	978599.275		55.666	-48.951	-46.224	-42.318	-38.4	-34.483	-57.713	-54.032	-50.154
10190	5738.087	966.009	0.15	488006.1	7443219	978590.281	0.0742	978590.281		59.14	-50.05	-47.204	-43.127	-39.038	-34.949	-59.199	-55.353	-51.305
10191	5727.183	1013.525	0.15	488185.2	7443339.7	978580.07	0.0449	978580.07		63.663	-50.88	-47.894	-43.617	-39.328	-35.038	-60.482	-56.444	-52.196
10192	5739.406	957.712	0.15	488130.8	7443415.3	978592.289	0.0363	978592.289		58.703	-49.552	-46.73	-42.688	-38.634	-34.58	-58.622	-54.81	-50.796
10193	5749.803	910.032	0.15	488069.2	7443493.5	978602.682	0.0266	978602.682		54.429	-48.452	-45.771	-41.93	-38.077	-34.224	-57.069	-53.449	-49.636
10194	5756.183	883.386	0.15	488021.6	7443584.3	978609.059	0.0204	978609.059		52.636	-47.241	-44.638	-40.909	-37.169	-33.429	-55.603	-52.092	-48.39
10195	5756.509	884.495	0.15	487971.8	7443670.5	978609.383	0.0142	978609.383		53.353	-46.649	-44.043	-40.309	-36.564	-32.819	-55.022	-51.506	-47.799
10196	5759.278	871.59	0.15	487912.8	7443753.8	978612.148	0.0067	978612.148		52.185	-46.362	-43.794	-40.115	-36.425	-32.734	-54.613	-51.149	-47.496
10197	5762.405	858.099	0.15	487857.2	7443832.3	978615.271	-0.0022	978615.271		51.191	-45.835	-43.307	-39.684	-36.051	-32.417	-53.957	-50.547	-46.951
10198	5764.023	851.987	0.15	487805.1	7443920.3	978616.888	-0.0055	978616.888		50.973	-45.363	-42.853	-39.256	-35.648	-32.041	-53.427	-50.042	-46.472
10199	5765.739	843.582	0.15	487752.9	7444002.2	978618.601	-0.011	978618.601		50.141	-45.248	-42.762	-39.201	-35.629	-32.057	-53.232	-49.881	-46.345
10200	5766.701	838.791	0.15	487697.8	7444088.8	978619.562	-0.0139	978619.562		49.674	-45.174	-42.702	-39.162	-35.61	-32.058	-53.113	-49.781	-46.265
10201	5766.591	839.672	0.15	487642.4	7444171.6	978619.449	-0.0203	978619.449		49.882	-45.066	-42.591	-39.047	-35.491	-31.935	-53.013	-49.677	-46.158
10202	5768.103	833.195	0.15	487588.1	7444259.3	978620.955	-0.0407	978620.955		49.44	-44.776	-42.321	-38.804	-35.276	-31.747	-52.662	-49.352	-45.861
10203	5768.813	828.069	0.15	487533.8	7444335.2	978621.638	0.0629	978621.638		48.587	-45.053	-42.612	-39.117	-35.61	-32.103	-52.889	-49.56	-46.13
10204	5766.262	843.198	0.15	487480.4	7444423.8	978619.093	0.0661	978619.093		50.762	-44.583	-42.098	-38.539	-34.968	-31.398	-52.563	-49.214	-45.68
10205	5759.098	883.815	0.15	487429.6	7444498.3	978611.936	0.0697	978611.936		56.184	-43.742	-41.137	-37.407	-33.665	-29.923	-52.108	-48.254	-44.891
10206	5760.678	881.912	0.15	487374.7	7444586.6	978613.52	0.0718	978613.52		57.233	-42.478	-39.88	-36.157	-32.423	-28.689	-50.827	-47.321	-43.625
10207	5763.718	869.201	0.15	487319.1	7444674.9	978616.566	0.0744	978616.566		56.408	-41.87	-39.309	-35.64	-31.959	-28.279	-50.097	-46.643	-43
10208	5764.22	867.585	0.15	487262.3	7444760.1	978617.071	0.0761	978617.071		56.465	-41.631	-39.075	-35.413	-31.739	-28.065	-49.843	-46.396	-42.76
10209	5761.222	884.31	0.15	487214.2	7444839.7	978614.08	0.0788	978614.08		58.681	-41.3	-38.694	-34.961	-31.217	-27.473	-49.671	-46.156	-42.45
10210	5748.661	943.538	0.15	487373	7444931.9	978601.525	0.0812	978601.525		64.458	-42.199	-39.42	-35.437	-31.443	-27.449	-51.134	-47.38	-43.426
10211	5752.164	924.8	0.15	487423.9	7444862.8	978605.034	0.083	978605.034		62.144	-42.402	-39.677	-35.774	-31.858	-27.943	-51.158	-47.48	-43.604
10212	5759.44	890.214	0.15	487488.4	7444780.2	978612.315	0.0841	978612.315		58.703	-41.944	-39.321	-35.563	-31.794	-28.025	-50.371	-46.832	-43.101
10213	5759.179	890.109	0.15	487541.1	7444697.8	978612.056	0.0845	978612.056		58.363	-42.272	-39.649	-35.892	-32.123	-28.354	-50.698	-47.159	-43.429
10214	5761.386	871.416	0.15	487601.5	7444607.6	978614.266	0.0848	978614.266		54.752	-43.776	-41.208	-37.53	-33.84	-			

JORC Code, 2012 Edition – Table 1 report

Section 1 Sampling Techniques and Data

(Criteria in this section apply to all succeeding sections.)

Criteria	JORC Code explanation	Commentary
Sampling techniques	<ul style="list-style-type: none"> • <i>Nature and quality of sampling (e.g. cut channels, random chips, or specific specialised industry standard measurement tools appropriate to the minerals under investigation, such as down hole gamma sondes, or handheld XRF instruments, etc). These examples should not be taken as limiting the broad meaning of sampling.</i> • <i>Include reference to measures taken to ensure sample representivity and the appropriate calibration of any measurement tools or systems used.</i> • <i>Aspects of the determination of mineralisation that are Material to the Public Report.</i> • <i>In cases where ‘industry standard’ work has been done this would be relatively simple (e.g. ‘reverse circulation drilling was used to obtain 1 m samples from which 3 kg was pulverised to produce a 30 g charge for fire assay’). In other cases more explanation may be required, such as where there is coarse gold</i> 	<ul style="list-style-type: none"> • Gravity data was collected on a pre-determined 200m x 100m grid and collected along northwest-trending lines (322° Mag) • Base stations were used to daily calibrate data against the regional gravity field • Reading Duration: 60–120 seconds per station • Hand sample densities (specific gravity) were calculated using the wet/dry Archimede’s technique.

Criteria	JORC Code explanation	Commentary
	<p><i>that has inherent sampling problems. Unusual commodities or mineralisation types (e.g. submarine nodules) may warrant disclosure of detailed information.</i></p>	
<p>Drilling techniques</p>	<ul style="list-style-type: none"> • <i>Drill type (e.g. core, reverse circulation, open-hole hammer, rotary air blast, auger, Bangka, sonic, etc) and details (e.g. core diameter, triple or standard tube, depth of diamond tails, face-sampling bit or other type, whether core is oriented and if so, by what method, etc).</i> 	<ul style="list-style-type: none"> • No new drilling is reported
<p>Drill sample recovery</p>	<ul style="list-style-type: none"> • <i>Method of recording and assessing core and chip sample recoveries and results assessed.</i> • <i>Measures taken to maximise sample recovery and ensure representative nature of the samples.</i> • <i>Whether a relationship exists between sample recovery and grade and whether sample bias may have occurred due to preferential loss/gain of fine/coarse material.</i> 	<ul style="list-style-type: none"> • No new drilling is reported
<p>Logging</p>	<ul style="list-style-type: none"> • <i>Whether core and chip samples have been geologically and geotechnically logged to a level of detail to support appropriate Mineral Resource estimation, mining studies and metallurgical studies.</i> • <i>Whether logging is qualitative or quantitative in nature. Core (or costean, channel, etc) photography.</i> • <i>The total length and percentage of the relevant intersections</i> 	<ul style="list-style-type: none"> • No new drilling is reported

Criteria	JORC Code explanation	Commentary
	<i>logged.</i>	
Sub-sampling techniques and sample preparation	<ul style="list-style-type: none"> • <i>If core, whether cut or sawn and whether quarter, half or all core taken.</i> • <i>If non-core, whether riffled, tube sampled, rotary split, etc and whether sampled wet or dry.</i> • <i>For all sample types, the nature, quality and appropriateness of the sample preparation technique.</i> • <i>Quality control procedures adopted for all sub-sampling stages to maximise representivity of samples.</i> • <i>Measures taken to ensure that the sampling is representative of the in situ material collected, including for instance results for field duplicate/second-half sampling.</i> • <i>Whether sample sizes are appropriate to the grain size of the material being sampled.</i> 	<ul style="list-style-type: none"> • No new drilling is reported
Quality of assay data and laboratory tests	<ul style="list-style-type: none"> • <i>The nature, quality and appropriateness of the assaying and laboratory procedures used and whether the technique is considered partial or total.</i> • <i>For geophysical tools, spectrometers, handheld XRF instruments, etc, the parameters used in determining the analysis including instrument make and model, reading times, calibrations factors applied and their derivation, etc.</i> • <i>Nature of quality control procedures adopted (e.g. standards,</i> 	<p>Equipment Used</p> <ul style="list-style-type: none"> • One Scintrex CG5 Gravity meter • Trimble GNSS R12iLT GPS/GNSS with Trimble Access & Centrepoint RTX • Garmin Handheld 66 series GPS • Field processing Tough Book computer(s) <p>Calibration / Correction Factors</p>

Criteria	JORC Code explanation	Commentary
	<p><i>blanks, duplicates, external laboratory checks) and whether acceptable levels of accuracy (i.e. lack of bias) and precision have been established.</i></p>	<ul style="list-style-type: none"> • Tilt Correction: Applied to account for instrument misalignment • Tidal Correction: Applied to remove gravitational effects from Earth tides • Seismic Noise Filtering: Used to exclude transient or cultural noise • Instrument Drift Correction: Applied to compensate for sensor drift over time • Temperature Compensation: Corrects for thermal sensitivity of sensors • Data Averaging and Outlier Rejection: Used to improve signal quality and remove anomalous data points
<p>Verification of sampling and assaying</p>	<ul style="list-style-type: none"> • <i>The verification of significant intersections by either independent or alternative company personnel.</i> • <i>The use of twinned holes.</i> • <i>Documentation of primary data, data entry procedures, data verification, data storage (physical and electronic) protocols.</i> • <i>Discuss any adjustment to assay data.</i> 	<ul style="list-style-type: none"> • Raw data was calibrated against the regional gravity field using base stations at the start and end of each survey day. • Data was collected in the field using a One Scintrex CG5 Gravity meter. Data was transferred daily to a Toughbook field computer and then standard QAQC protocols applied. • Station Repeats: Greater than 5% minimum for quality control
<p>Location of data points</p>	<ul style="list-style-type: none"> • <i>Accuracy and quality of surveys used to locate drill holes (collar and down-hole surveys), trenches, mine workings and other</i> 	<ul style="list-style-type: none"> • Gravity stations were collected on a pre-determined 200m x 100m grid.

Criteria	JORC Code explanation	Commentary
	<p><i>locations used in Mineral Resource estimation.</i></p> <ul style="list-style-type: none"> • <i>Specification of the grid system used.</i> • <i>Quality and adequacy of topographic control.</i> 	<ul style="list-style-type: none"> • A Garmin Handheld 66 series GPS was used to locate survey stations ($\pm 3\text{m}$ accuracy) • Horizontal and vertical control has been established using the Centerpoint RTX (SV) real time kinetic processing service provided by Trimble Australia. This method provides control within the GDA94 Datum to within ± 5 cm. Co-ordinates are in GDA94 datum, Zone 53.
Data spacing and distribution	<ul style="list-style-type: none"> • <i>Data spacing for reporting of Exploration Results.</i> • <i>Whether the data spacing and distribution is sufficient to establish the degree of geological and grade continuity appropriate for the Mineral Resource and Ore Reserve estimation procedure(s) and classifications applied.</i> • <i>Whether sample compositing has been applied.</i> 	<ul style="list-style-type: none"> • Gravity data was collected on a 200m x 100m grid with northwest-oriented lines. • Spacing is sufficient to resolve the key gravity features of the Bomb Diggity magnetic anomaly.
Orientation of data in relation to geological structure	<ul style="list-style-type: none"> • <i>Whether the orientation of sampling achieves unbiased sampling of possible structures and the extent to which this is known, considering the deposit type.</i> • <i>If the relationship between the drilling orientation and the orientation of key mineralised structures is considered to have introduced a sampling bias, this should be assessed and reported if material.</i> 	<ul style="list-style-type: none"> • Gravity stations were collected perpendicular to the general northeast strike of underlying geological features.

Criteria	JORC Code explanation	Commentary
Sample security	<ul style="list-style-type: none"> The measures taken to ensure sample security. 	<ul style="list-style-type: none"> Data was saved daily to a master data file within a password protected computer.
Audits or reviews	<ul style="list-style-type: none"> The results of any audits or reviews of sampling techniques and data. 	Continuous improvement internal reviews of sampling techniques and procedures are ongoing. No external audits have been performed.

Section 2 Reporting of Exploration Results

(Criteria listed in the preceding section also apply to this section.)

Criteria	JORC Code explanation	Commentary
Mineral tenement and land tenure status	<ul style="list-style-type: none"> Type, reference name/number, location and ownership including agreements or material issues with third parties such as joint ventures, partnerships, overriding royalties, native title interests, historical sites, wilderness or national park and environmental settings. The security of the tenure held at the time of reporting along with any known impediments to obtaining a licence to operate in the area. 	<ul style="list-style-type: none"> Tenement includes Oonagalabi (EL32279) for a total of 145.3km² and 46 sub-blocks. EL32279 is owned by Kalk Exploration Pty. Ltd., a 100% owned entity of Litchfield Minerals Limited. Oonagalabi is located 125km northeast of Alice Springs on pastoral lease. The tenements are in good standing and there are no known impediments.
Exploration done by	<ul style="list-style-type: none"> Acknowledgment and appraisal of exploration by other parties. 	<ul style="list-style-type: none"> A summary of previous exploration and mining is presented below: Oonagalabi was discovered in the 1930's.

Criteria	JORC Code explanation	Commentary
other parties		<ul style="list-style-type: none"> In 1970, Russgar Minerals completed regional mag-rad survey, VLF_EM survey, ground magnetic survey, single line resistivity traverse and 14 drillholes. In 1971, Geopeko completed limited IP. 1979, Amoco completed photo-interpretation, rock chip sampling and drilling (8 holes). 1981 D’Dor Mining NL completed limited dipole-dipole IP. Silex 2009 completed pole-dipole IP 1 x diamond hole.
Geology	<ul style="list-style-type: none"> <i>Deposit type, geological setting and style of mineralisation.</i> 	<ul style="list-style-type: none"> The Oonagalabi-type mineralisation is considered to be either skarn-related, sediment-hosted or carbonate replacement with potential for high-grade remobilised breccia zones similar to the Jervis deposit. EL32279 falls within one of Geoscience Australia’s IOCG high potential zones. <p>The project lies within the Harts Range that represents a package of multiply deformed and metamorphosed sedimentary and igneous intrusive rocks.</p>
Drill hole Information	<ul style="list-style-type: none"> <i>A summary of all information material to the understanding of the exploration results including a tabulation of the following information for all Material drill holes:</i> <ul style="list-style-type: none"> <i>easting and northing of the drill hole collar</i> 	<ul style="list-style-type: none"> See Appendix 1 within the main body of the announcement.

Criteria	JORC Code explanation	Commentary
	<ul style="list-style-type: none"> ○ <i>elevation or RL (Reduced Level – elevation above sea level in metres) of the drill hole collar</i> ○ <i>dip and azimuth of the hole</i> ○ <i>down hole length and interception depth</i> ○ <i>hole length.</i> ● <i>If the exclusion of this information is justified on the basis that the information is not Material and this exclusion does not detract from the understanding of the report, the Competent Person should clearly explain why this is the case.</i> 	
<p>Data aggregation methods</p>	<ul style="list-style-type: none"> ● <i>In reporting Exploration Results, weighting averaging techniques, maximum and/or minimum grade truncations (e.g. cutting of high grades) and cut-off grades are usually Material and should be stated.</i> ● <i>Where aggregate intercepts incorporate short lengths of high grade results and longer lengths of low grade results, the procedure used for such aggregation should be stated and some typical examples of such aggregations should be shown in detail.</i> ● <i>The assumptions used for any reporting of metal equivalent values should be clearly stated.</i> 	<ul style="list-style-type: none"> ● No assaying is reported in this report. No aggregation methods were used on the raw gravity field data.

Criteria	JORC Code explanation	Commentary
Relationship between mineralisation on widths and intercept lengths	<ul style="list-style-type: none"> • <i>These relationships are particularly important in the reporting of Exploration Results.</i> • <i>If the geometry of the mineralisation with respect to the drill hole angle is known, its nature should be reported.</i> • <i>If it is not known and only the down hole lengths are reported, there should be a clear statement to this effect (e.g. 'down hole length, true width not known').</i> 	<ul style="list-style-type: none"> • No drilling results reported. The gravity survey was completed perpendicular to the main Bomb Diggity structural trend.
Diagrams	<ul style="list-style-type: none"> • <i>Appropriate maps and sections (with scales) and tabulations of intercepts should be included for any significant discovery being reported These should include, but not be limited to a plan view of drill hole collar locations and appropriate sectional views.</i> 	<ul style="list-style-type: none"> • See Figures within the main body of the announcement.
Balanced reporting	<ul style="list-style-type: none"> • <i>Where comprehensive reporting of all Exploration Results is not practicable, representative reporting of both low and high grades and/or widths should be practiced to avoid misleading reporting of Exploration Results.</i> 	<ul style="list-style-type: none"> • All available relevant information is presented.
Other substantive exploration data	<ul style="list-style-type: none"> • <i>Other exploration data, if meaningful and material, should be reported including (but not limited to): geological observations; geophysical survey results; geochemical survey results; bulk samples – size and method of treatment; metallurgical test results; bulk density, groundwater, geotechnical and rock characteristics; potential deleterious or contaminating substances.</i> 	<ul style="list-style-type: none"> • See the main body of this report for all pertinent observations and interpretations.

Criteria	JORC Code explanation	Commentary
Further work	<ul style="list-style-type: none"> • <i>The nature and scale of planned further work (e.g. tests for lateral extensions or depth extensions or large-scale step-out drilling).</i> • <i>Diagrams clearly highlighting the areas of possible extensions, including the main geological interpretations and future drilling areas, provided this information is not commercially sensitive.</i> 	<p>Future planned exploration includes:</p> <ul style="list-style-type: none"> • Airborne EM (VTEM Max) • Phase 2 drilling