

Drilling completed at Salmon Gums Gold Project

Highlights

- Latest phase of drilling at the Salmon Gums Gold Project in the Norseman Greenstone Belt, in the Eastern Goldfields of Western Australia has been completed
- Drilling is a first pass test for gold anomalism at new structural/lithological targets on-trend from known gold mineralisation
- New targets considered highly prospective for Norseman-style gold mineralisation and are located in geological settings similar to Pantoro Gold's (ASX:PNR) Scotia Gold Project on-strike to the north
- 64 reconnaissance aircore drill holes were completed for a total of 1,338m
- Samples have been submitted for analysis – results within the next 4-6 weeks

Aruma Resources Limited (ASX: AAJ) (Aruma or the Company) is pleased to announce that the latest phase of drilling at its 100%-owned Salmon Gums Gold Project, in the Eastern Goldfields of Western Australia has been completed.

The program consisted of 64 aircore drill holes for a total of 1,338 metres at the priority Sage, Poppy and Rose Prospects.

Drilling tested interpreted structural and stratigraphic targets, as well as gold anomalism identified in previous soil geochemistry sampling programs and drilling by Aruma. These structural targets were generated from a comprehensive project-scale review undertaken by the Company's technical team and geological consultants, Model Earth Global Geological Services.

The program also aimed to improve geological understanding and provide geochemical pathfinder data to support the definition of priority targets for future reverse circulation (RC) drilling, subject to results.

The program was commenced in April and is now complete and samples have been submitted for gold and multi-element analysis, and assay results will be reported when available.

Aruma Resources Ltd

ACN 141 335 364
ASX: **AAJ**

Issued Capital

277,572,714 Shares
54,930,003 Listed options
55,500,000 Unlisted options
10,835,000 Performance rights

Business Office

Units 8-9, 88 Forrest Street
Cottesloe WA 6011
T: + 61 8 9321 0177
E: info@arumaresources.com

Board and Management

JAMES MOSES – Non-Executive Chairman
GRANT FERGUSON – Managing Director
BRETT SMITH – Non-Executive Director

Background to drilling program

The Salmon Gums Project (E63/2037 and E63/2122) is situated in a highly prospective gold corridor and covers approximately 222km². It is located south of the town of Norseman and approximately 30km along strike to the south of Pantoro Limited's (ASX: PNR) Norseman Gold Operations, which host a combined mineral resource of 4.7 million ounces of gold¹.

Aruma interprets the Project as being highly prospective for Norseman-style gold mineralisation, and has completed multiple drilling programs. These have returned encouraging results, highlighting the potential of the area, including; 5.9m @ 10.5g/t Au from 38.4m (in SG23DD007)².

A total of 64 holes for 1,338 metres were completed in the latest phase of drilling, a reconnaissance aircore program which tested the Sage, Poppy, and Rose Prospects, as follows; Sage: 41 holes for 832m, Poppy: 17 holes for 446m and Rose: 6 holes for 60m (Figures 1 - 3).

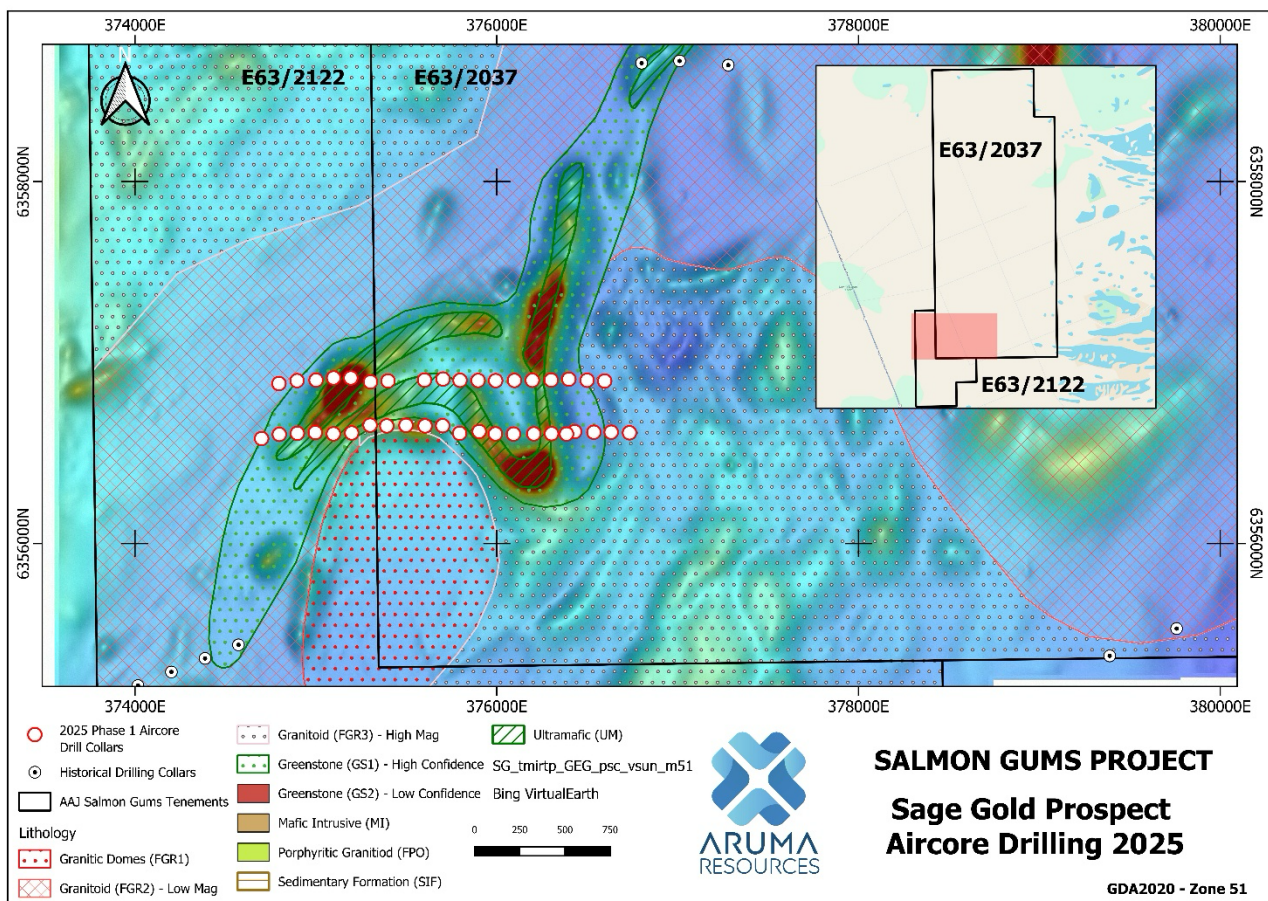


Figure 1 - Geological interpretation of Sage Prospect and drill hole locations from latest drilling

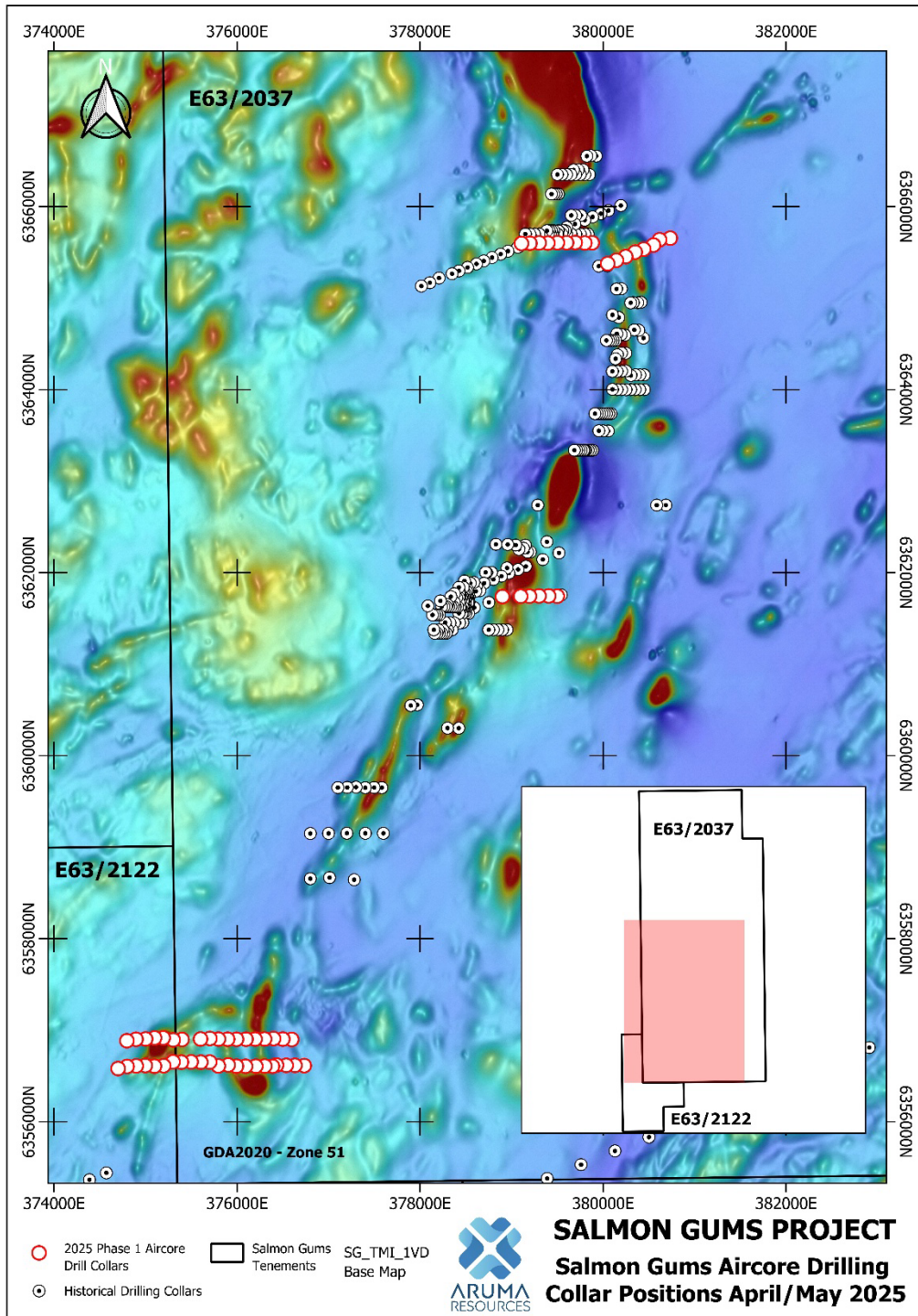


Figure 2 - Salmon Gums Project - Sage, Rose and Poppy Prospect Aircore Drilling 2025

The objective of the program was to test across strike at each target for potential anomalous gold and potential pathfinder minerals, and to also enhance the geological understanding of the Project area to assist future exploration planning.

The targeted prospects exhibit structural and lithological similarities to known mineralised zones within the Norseman Greenstone Belt, enhancing confidence in their exploration potential.

The aircore drilling was designed to penetrate the calcrete layer that caps much of the area's surface geology. This layer may have previously limited the effectiveness of soil geochemistry surveys in detecting bedrock mineralisation.

Next Steps

Aruma continues to advance its systematic exploration strategy across the underexplored Project area, with the aim of delineating significant new gold discoveries.

- Integration of assay results with existing geological and geochemical datasets
- Interpretation of pathfinder element associations to determine controls on mineralisation
- Planning and permitting/approvals for follow-up RC drilling at priority targets



Photograph - 1 - Aircore Drilling at the Salmon Gums Project - Sage Prospect

This announcement has been authorised for release by the Board of Aruma Resources Ltd.

ENDS

For further information, please contact:

Grant Ferguson

Managing Director

Aruma Resources Limited

Telephone: +61 8 9321 0177

[E: info@arumaresources.com](mailto:info@arumaresources.com)

About Aruma Resources

Aruma Resources Limited (ASX: AAJ) is an ASX-listed minerals exploration company focused on the exploration and development of a portfolio of prospective projects in high-demand commodities – copper and uranium - in world-class mineral belts, in South Australia and Queensland. It also holds gold, lithium and REE prospective projects in Western Australia.

Note:

¹ - 12 March 2025 – Pantoro Gold ASX Announcement (ASX:PNR) - Euroz Hartleys Conference Presentation

² - 21 November 2023 - Further High-Grade Gold Intersected in Drilling at Salmon Gums Gold Project

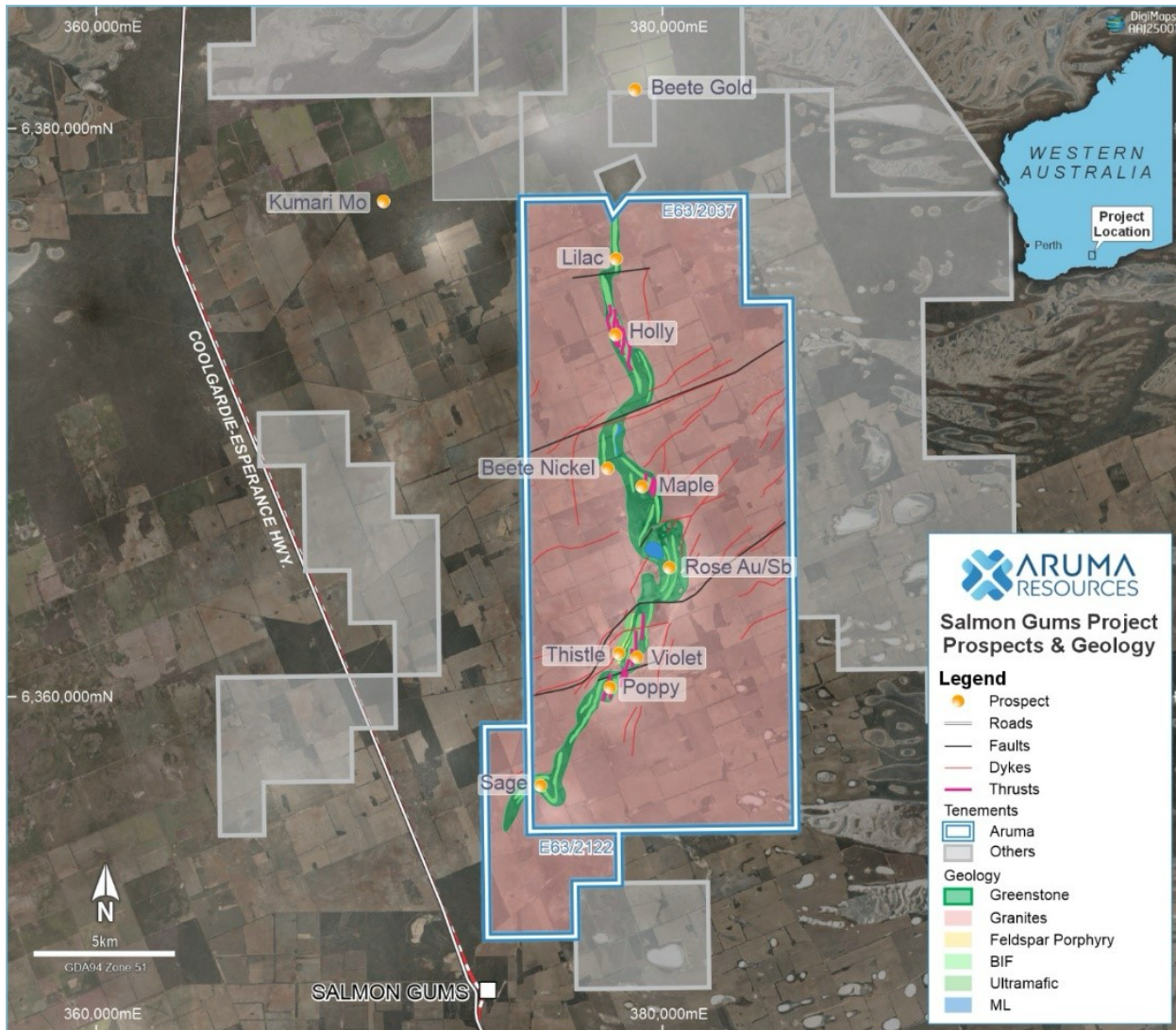


Figure 3 - Salmon Gums Gold Project Location Map

Competent person statement

The information in this release that relates to Exploration Results, Mineral Resources or Ore Reserves is based on information compiled by Grant Ferguson who is a Fellow of the Australian Institute of Geoscience (AIG). Mr Ferguson is Managing Director and a full-time employee of the Company. Mr Ferguson has sufficient experience that is relevant to the style of mineralisation and type of deposit under consideration and to the activity being undertaken to qualify as a Competent Person as defined in the 2012 Edition of the 'Australasian Code for Reporting of Exploration Results, Mineral Resources and Ore Reserve'. Mr Ferguson consents to the inclusion in the release of the matters based on his information in the form and context in which it appears. All exploration results that have been reported previously and released to ASX are available to be viewed on the Company website www.arumaresources.com. The Company confirms it is not aware of any new information that materially affects the information included in the original announcement. The Company confirms that the form and context in which the Competent Person's findings are presented have not been materially modified from the original announcements.

No New Information

Except where explicitly stated, this announcement contains references to prior exploration results, all of which have been cross-referenced to previous market announcements made by the Company. The Company confirms that it is not aware of any new information or data that materially affects the information included in the relevant market announcements.

Forward Looking Statement

Certain statements contained in this document constitute forward looking statements. Such forward-looking statements are based on a number of estimates and assumptions made by the Company and its consultants in light of experience, current conditions and expectations of future developments which the Company believes are appropriate in the current circumstances. These estimates and assumptions while considered reasonable by the Company are subject to known and unknown risks, uncertainties and other factors which may cause the actual results, achievements and performance of the Company to be materially different from the future results and achievements expressed or implied by such forward-looking statements. Forward looking statements include, but are not limited to, statements preceded by words such as “planned”, “expected”, “projected”, “estimated”, “may”, “scheduled”, “intends”, “anticipates”, “believes”, “potential”, “could”, “nominal”, “conceptual” and similar expressions. There can be no assurance that Aruma plans to develop exploration projects that will proceed with the current expectations. There can be no assurance that Aruma will be able to conform the presence of Mineral Resources or Ore Reserves, that any mineralisation will prove to be economic and will be successfully developed on any of Aruma’s mineral properties. Investors are cautioned that forward looking information is no guarantee of future performance and accordingly, investors are cautioned not to place undue reliance on these forward-looking statements

Prospect	Hole_ID	Type	Grid	East	North	RL	Total Depth	Prospect	Hole_id	Type	Grid	East	North	RL	Total Depth
SG- SAGE	SG25AC001	AC	MGA2020_Z51	376734	6356612	285	21	SG_ SAGE	SG25AC056	AC	MGA2020_Z51	375498	6356653	293	16
SG- SAGE	SG25AC002	AC	MGA2020_Z51	376633	6356615	283	23	SG_ SAGE	SG25AC057	AC	MGA2020_Z51	375392	6356650	294	13
SG- SAGE	SG25AC003	AC	MGA2020_Z51	376537	6356615	282	21	SG_ SAGE	SG25AC058	AC	MGA2020_Z51	375300	6356654	302	8
SG- SAGE	SG25AC004	AC	MGA2020_Z51	376431	6356618	281	14	SG_ SAGE	SG25AC059	AC	MGA2020_Z51	375198	6356611	312	8
SG- SAGE	SG25AC005	AC	MGA2020_Z51	376597	6356898	288	25	SG_ SAGE	SG25AC060	AC	MGA2020_Z51	375097	6356606	305	12
SG- SAGE	SG25AC006	AC	MGA2020_Z51	376500	6356902	292	6	SG_ SAGE	SG25AC061	AC	MGA2020_Z51	374997	6356613	310	18
SG- SAGE	SG25AC007	AC	MGA2020_Z51	376399	6356908	295	12	SG_ SAGE	SG25AC062	AC	MGA2020_Z51	374898	6356609	310	28
SG- SAGE	SG25AC008	AC	MGA2020_Z51	376301	6356903	303	10	SG_ SAGE	SG25AC063	AC	MGA2020_Z51	374798	6356603	329	23
SG- SAGE	SG25AC009	AC	MGA2020_Z51	376197	6356902	291	24	SG_ SAGE	SG25AC064	AC	MGA2020_Z51	374700	6356580	329	37
SG- SAGE	SG25AC010	AC	MGA2020_Z51	376098	6356901	291	9	SG-POPPY	SG25AC035	AC	MGA2020_Z51	380734	6365655	281	30
SG- SAGE	SG25AC011	AC	MGA2020_Z51	375994	6356900	291	8	SG-POPPY	SG25AC036	AC	MGA2020_Z51	380617	6365637	292	12
SG- SAGE	SG25AC012	AC	MGA2020_Z51	375897	6356901	292	6	SG-POPPY	SG25AC037	AC	MGA2020_Z51	380550	6365579	290	18
SG- SAGE	SG25AC013	AC	MGA2020_Z51	375797	6356902	297	15	SG-POPPY	SG25AC038	AC	MGA2020_Z51	380444	6365535	285	15
SG- SAGE	SG25AC014	AC	MGA2020_Z51	375703	6356909	303	29	SG-POPPY	SG25AC039	AC	MGA2020_Z51	380351	6365502	286	16
SG- SAGE	SG25AC015	AC	MGA2020_Z51	375601	6356903	302	18	SG-POPPY	SG25AC040	AC	MGA2020_Z51	380247	6365453	295	6
SG- SAGE	SG25AC016	AC	MGA2020_Z51	375515	6356888	293	22	SG-POPPY	SG25AC041	AC	MGA2020_Z51	380145	6365413	297	28
SG- SAGE	SG25AC017	AC	MGA2020_Z51	375399	6356898	293	16	SG-POPPY	SG25AC042	AC	MGA2020_Z51	380050	6365376	300	45
SG- SAGE	SG25AC018	AC	MGA2020_Z51	375302	6356893	299	21	SG-POPPY	SG25AC043	AC	MGA2020_Z51	379881	6365604	306	41
SG- SAGE	SG25AC019	AC	MGA2020_Z51	375193	6356915	299	26	SG-POPPY	SG25AC044	AC	MGA2020_Z51	379800	6365602	302	31
SG- SAGE	SG25AC020	AC	MGA2020_Z51	375098	6356915	313	46	SG-POPPY	SG25AC045	AC	MGA2020_Z51	379695	6365607	307	29
SG- SAGE	SG25AC021	AC	MGA2020_Z51	375001	6356903	314	36	SG-POPPY	SG25AC046	AC	MGA2020_Z51	379601	6365605	304	23
SG- SAGE	SG25AC022	AC	MGA2020_Z51	374896	6356900	302	42	SG-POPPY	SG25AC047	AC	MGA2020_Z51	379500	6365605	308	37
SG- SAGE	SG25AC023	AC	MGA2020_Z51	374796	6356884	303	35	SG-POPPY	SG25AC048	AC	MGA2020_Z51	379396	6365601	309	33
SG- SAGE	SG25AC024	AC	MGA2020_Z51	376386	6356605	295	18	SG-POPPY	SG25AC049	AC	MGA2020_Z51	379301	6365603	306	46

Aruma Resources Ltd

ACN 141 335 364
ASX: **AAJ**

Issued Capital

277,572,714 Shares
54,930,003 Listed options
55,500,000 Unlisted options
10,835,000 Performance rights

Business Office

Units 8-9, 88 Forrest Street
Cottesloe WA 6011
T: + 61 8 9321 0177
E: info@arumaresources.com

Board and Management

JAMES MOSES – Non-Executive Chairman
GRANT FERGUSON – Managing Director
BRETT SMITH – Non-Executive Director



Prospect	Hole_ID	Type	Grid	East	North	RL	Total Depth	Prospect	Hole_id	Type	Grid	East	North	RL	Total Depth
SG- SAGE	SG25AC025	AC	MGA2020_Z51	376303	6356607	263	30	SG-POPPY	SG25AC050	AC	MGA2020_Z51	379200	6365599	310	23
SG- SAGE	SG25AC026	AC	MGA2020_Z51	376205	6356606	272	4	SG-POPPY	SG25AC051	AC	MGA2020_Z51	379108	6365597	302	13
SG- SAGE	SG25AC027	AC	MGA2020_Z51	376093	6356605	289	15	SG-ROSE	SG25AC029	AC	MGA2020_Z51	379499	6361742	273	10
SG- SAGE	SG25AC028	AC	MGA2020_Z51	375993	6356606	289	18	SG-ROSE	SG25AC030	AC	MGA2020_Z51	379405	6361745	270	19
SG_SAGE	SG25AC052	AC	MGA2020_Z51	375903	6356619	294	36	SG-ROSE	SG25AC031	AC	MGA2020_Z51	379300	6361745	273	7
SG_SAGE	SG25AC053	AC	MGA2020_Z51	375795	6356609	294	27	SG-ROSE	SG25AC032	AC	MGA2020_Z51	379195	6361742	280	7
SG_SAGE	SG25AC054	AC	MGA2020_Z51	375701	6356651	293	20	SG-ROSE	SG25AC033	AC	MGA2020_Z51	379099	6361741	278	8
SG_SAGE	SG25AC055	AC	MGA2020_Z51	375604	6356650	293	16	SG-ROSE	SG25AC034	AC	MGA2020_Z51	378900	6361738	279	9