

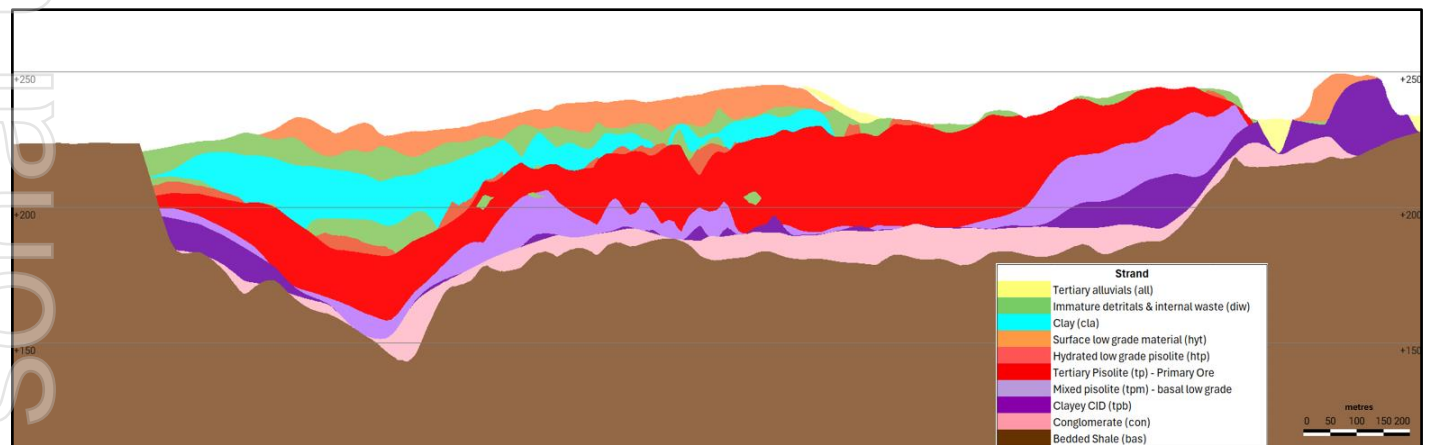
22 May 2025

## Onslow Iron Resource and Reserve Statement addendum

Mineral Resources Limited (**ASX: MIN**) (**MinRes** or **Company**) provides the diagrams below following the updated Mineral Resources and Ore Reserves statements (100% basis) for the Onslow Iron Project (**OIP**) announced on 21 May 2025<sup>1</sup>.

In relation to Section 2 of JORC Table 1 for OIP Mineral Resources statement, the following diagrams show a typical geology cross section and plan views of each deposit.

The cross section depicted below (Figure 1) shows the typical stratigraphic units of the OIP Channel Iron Deposits (**CID**), with the primary ore unit being the Tertiary Pisolite (**TP**).

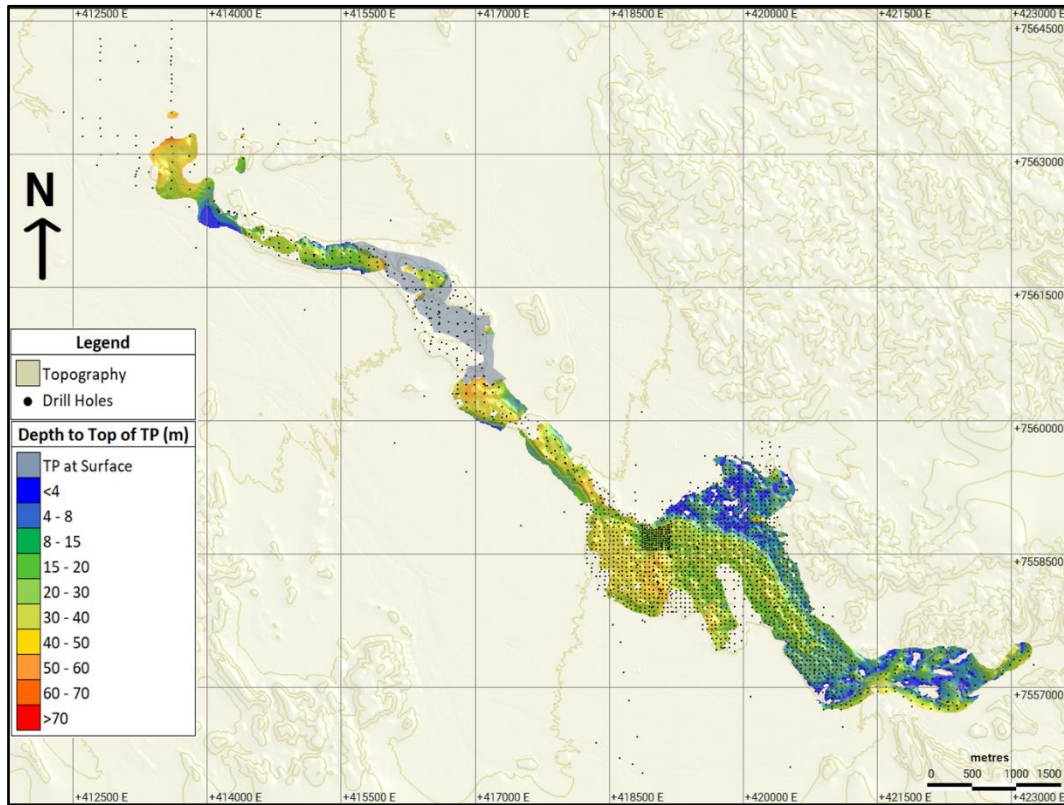


**Figure 1:** Typical cross section of the geology of the OIP Channel Iron Deposits.  
There is a vertical exaggeration (x5) applied for ease of visibility.

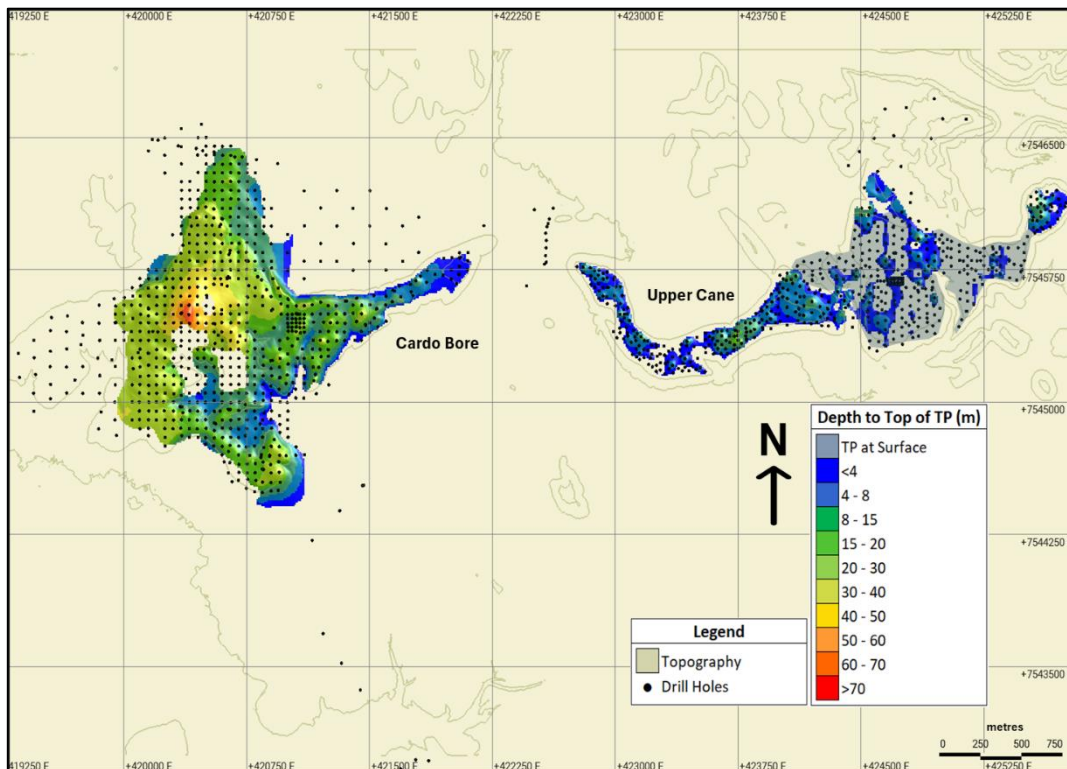
The plan views depicted below (Figures 2 – 5) show the drill holes across each deposit and depth of the top of TP from surface.

<sup>1</sup> ASX Announcement 21 May 2025

For personal use only



**Figure 2:** Ken's Bore Plan View showing drill coverage and depth to the top of TP



**Figure 3:** Cardo Bore and Upper Cane Plan View showing drill coverage and depth to the top of TP

For personal use only

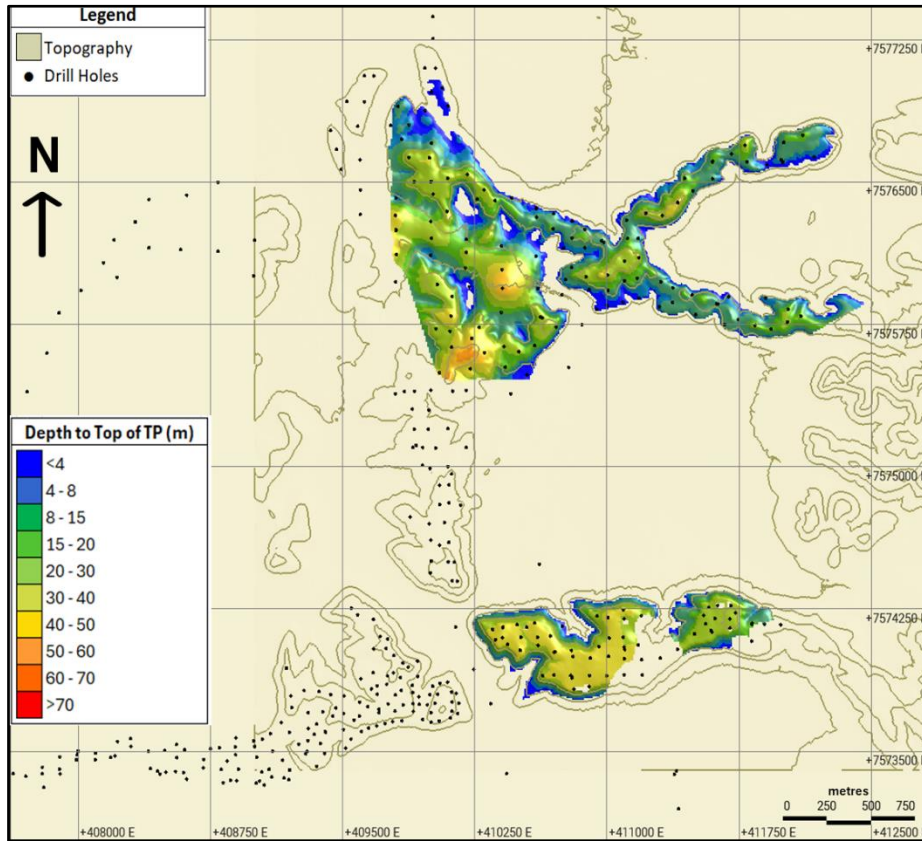


Figure 4: Cochrane and Jewel Plan View showing drill coverage and depth to the top of TP

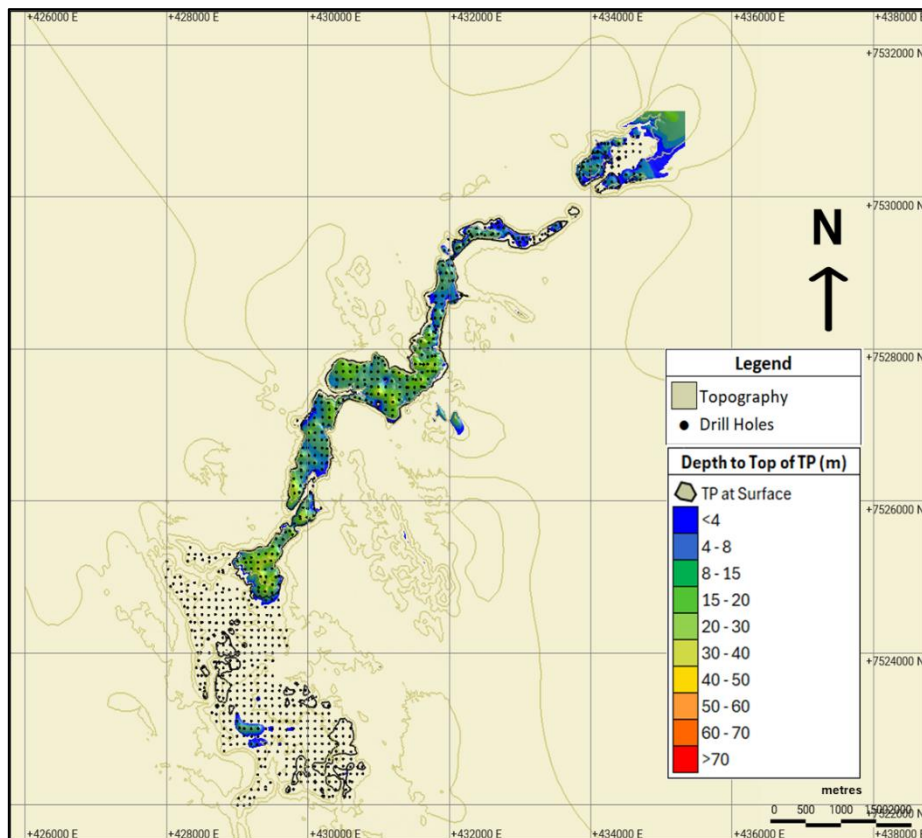


Figure 5: Trinity Bore Plan View showing drill coverage and depth to the top of TP

## Competent Person's statement

Mr Ashok Doorgapershad is General Manager Exploration and Geology and a full-time employee of Mineral Resources Limited. Mr Doorgapershad is a Fellow of the Australasian Institute of Mining and Metallurgy (FAusIMM). Mr Ashok Doorgapershad consents to the inclusion in this announcement of the matters based on his information in the form and context in which it appears. Mr Ashok Doorgapershad consents to the inclusion in this announcement, and the announcement of 21 May 2025, of the matters based on his information in the form and context in which it appears.

Mr Guy Davies is the Principal Strategic Planning Engineer and a full-time employee of Mineral Resources Limited. He is a Member of the Australasian Institute of Mining and Metallurgy (MAusIMM). Mr Guy Davies consents to the inclusion in this announcement, and the announcement of 21 May 2025, of the matters based on his information in the form and context in which it appears.

Ms Stephanie Raiseborough is the Manager Mine Planning and a full-time employee of Mineral Resources Limited. She is a Fellow of the Australasian Institute of Mining and Metallurgy (FAusIMM). Ms Stephanie Raiseborough consents to the inclusion in this announcement, and the announcement of 21 May 2025, of the matters based on her information in the form and context in which it appears.

Mr Gavin Shaw is the General Manager Mine Planning and a full-time employee of Mineral Resources Limited. He is a Member of the Australasian Institute of Mining and Metallurgy (MAusIMM). Mr Gavin Shaw consents to the inclusion in this announcement, and the announcement of 21 May 2025, of the matters based on his information in the form and context in which it appears.

## ENDS

This announcement dated 22 May 2025 has been authorised for release to the ASX by Mark Wilson, Chief Financial Officer and Company Secretary.

For further information, please contact:

### **Chris Chong**

General Manager Investor Relations  
Mineral Resources Limited  
T: +61 8 9315 0213  
E: [chris.chong@mrl.com.au](mailto:chris.chong@mrl.com.au)

### **Peter Law**

Senior Media Manager  
Mineral Resources Limited  
T: +61 428 925 422  
E: [peter.law@mrl.com.au](mailto:peter.law@mrl.com.au)

## About Mineral Resources

Mineral Resources Limited (ASX: MIN) (MinRes) is a leading diversified resources company, with extensive operations in lithium, iron ore, energy and mining services across Western Australia. For more information, visit [www.mineralresources.com.au](http://www.mineralresources.com.au).