



RHYTHM[™]
BIOSCIENCES



personal use only

Investor Roadshow Presentation

2ND - 5TH JUNE 2025

Disclaimer

This presentation has been prepared by **Rhythm Biosciences Limited** (Rhythm) and is provided for general information purposes only. No party other than Rhythm has authorised or caused the issue of this document, or takes responsibility for, or makes any statements, representations or undertakings in this presentation.

This presentation is not intended to be relied upon as advice to investors or potential investors and does not take into account the investment objectives, financial situation or needs of any particular investor. Rhythm makes no warranty or representation (express or implied) as to the accuracy, reliability or completeness of the information contained in this presentation. Specifically, several matters referred to in the presentation remain under investigation and are subject to change or even elimination, depending on further research and investigation. Further, any opinions (including any forward-looking statements) expressed in this presentation are subject to change without notice. Rhythm and its directors, officers, employees, advisers and agents shall have no liability (including liability to any person by reason of negligence or negligent misstatement) for any statements, opinions, information or matters (express or implied) arising out of, contained in or derived from or for any omissions from this presentation, except liability under statute that cannot be excluded.

This presentation, including the information contained in this disclaimer, does not form part of any offer, invitation or recommendation in respect of shares, or an offer, invitation or recommendation to sell, or a solicitation of any offer to buy, shares in the United States, or in any other jurisdiction in which, or to any person to whom, such an offer would be illegal.

This presentation may include forward-looking statements. Forward-looking statements are only predictions and are subject to known and unknown risks, uncertainties and assumptions, many of which are outside the control of Rhythm. Actual values, results or events may be materially different to those expressed or implied in this presentation depending on a range of factors. Given these uncertainties, recipients are cautioned not to place reliance on forward-looking statements. No representation or warranty (express or implied) is made by Rhythm or any of its directors, officers, employees, advisers or agents that any forecasts, projections, intentions, expectations or plans set out in this presentation will be achieved.

About Rhythm Biosciences



We are committed to saving lives through the evaluation of cancer risk and early detection of cancers



Early detection of cancer gives individuals the best possible opportunity for favorable treatment outcomes.

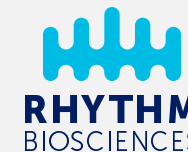
Addressing large under-served global markets worth >USD\$50bn and heavily supported by public and private health care systems.

geneType™ commercially available now and ColoSTAT® anticipated commercial launch in 2H CY2025.

Patent protected, fully characterised proteomic, genomic technology that can be readily adopted in routine laboratories.

A valuable development pipeline of high quality, impactful cancer risk assessment and detection products.

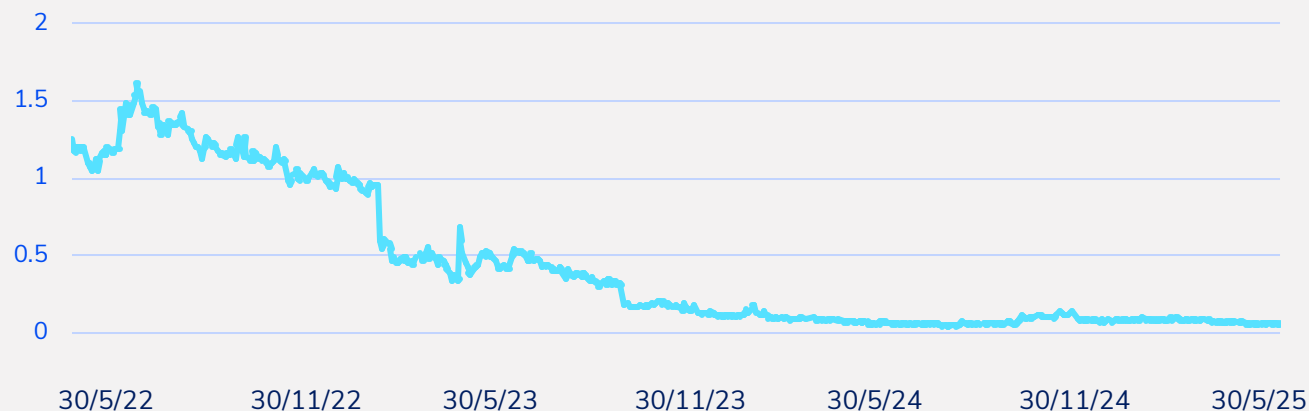
Corporate overview



CORPORATE SNAPSHOT

ASX Code	RHY
Share Price (29th May 2025)	\$0.065
Shares on Issue	283,597M
Unlisted & Listed Options	53.4M
Market Capitalisation	\$18.43M
Cash in Bank (31 March 2025)	\$2.3M
Top 20 Shareholders	43.3%

SHARE PRICE CHART - ASX:RHY



BOARD AND MANAGEMENT

David Atkins, PhD
CEO & MD



Former CEO of Congenica (UK) & Synevo Diagnostics, Sr. Executive at Johnson & Johnson and Danaher.

Founder of Veridex – cancer molecular and cellular diagnostics (USA).

Experience in product development and commercial leadership in the global medical device and diagnostic industry.

Otto Buttula
Non-Executive Chairman



Extensive financial, investment, IT & biotech experience.

Co-Founder and CEO of IWL (ASX: IWL); Founder / former CEO of Investors Mutual

Formerly a Director of Imugene (ASX:IMU), Chairman of Investorfirst, now HUB (ASX: HUB), HITIQ (ASX: HIQ) & Oncosil Medical (ASX: OSL).

Sue MacLeman
Non-Executive Director



30 years in Pharma, Biotech and Medtech including Amgen, BMS and Merck and SME's.

Experienced Board member, former CEO of NASDAQ, ASX, & AIM entities. Currently Chair of Medicines Australia, NED at Viral Vector Manufacturing Facility, Smartways Logistics, Healthcare Translation Group, ATSE & OMICO & member of the National Research Infrastructure (NRI) Advisory Group.

Gavin Fox-Smith
Non-Executive Director



38 years as a leader and champion of Medical Technology in Australia/NZ and Asia.

Gavin is Chair of ANDHealth (Australia's National Digital Health Initiative), Board Director for Bowel Cancer Australia and Board Director for SAN Foundation.

Gavin was previously CEO of Omnigon, a private Australian company in the Ostomy Care market.

Cancer is an increasing burden on global healthcare systems

The role of cancer diagnostics remains critical to public health

Estimated % rise in all cancers 2022 to 2050

Males and Females, Age 0-85+

Incidence:



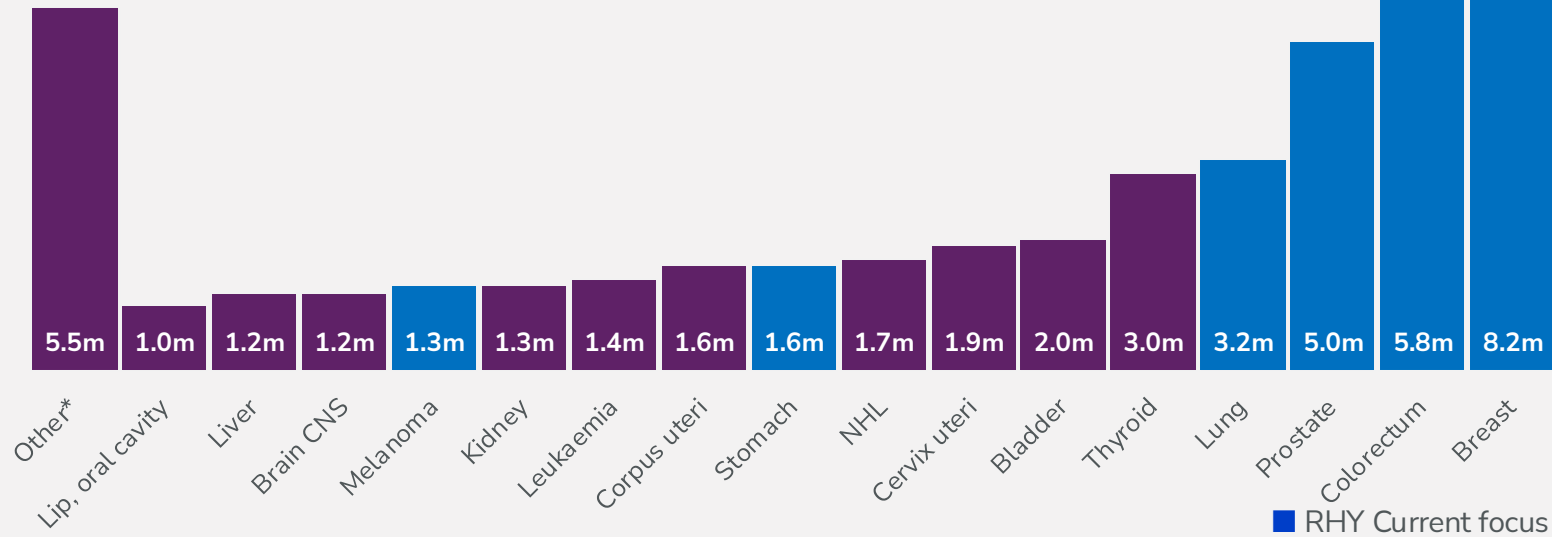
Mortality:



Source: <https://gco.iarc.who.int/>

- Ovary, Oesophagus, Larynx, Multiple myeloma, Pancreas, Nasopharynx, Oropharynx, Testis, Hodgkin lymphoma, Salivary glands, Gallbladder, Hypopharynx, Vulva, Penis, Kaposi sarcoma, Vagina, Mesothelioma
- # Chen et al. JAMA Oncol. 2023; 9(4): 465 – 472.

Estimated number of worldwide prevalent cases in 5 years from 2022



The Economic Burden of Cancer#:

- Impact driven by mortality (10 million WW deaths) and lost productivity.
- Global cancer economic burden for 2020 – 2050 is \$25.2trillion, 0.55% of WW GDP.
- Lung and bowel cancer contribute >25% of this burden.

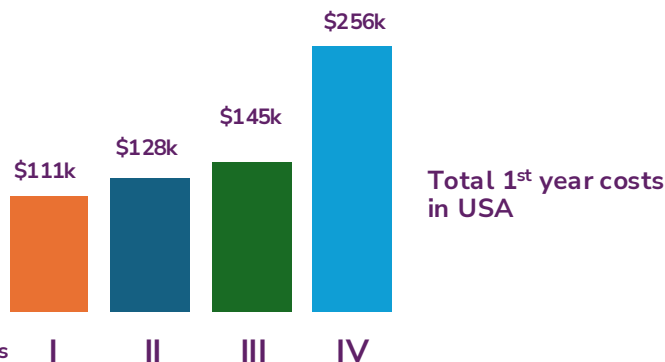
When diagnosed early, cancer can be successfully treated

Disease stage for colorectal cancer diagnosis is the key predictor of survival

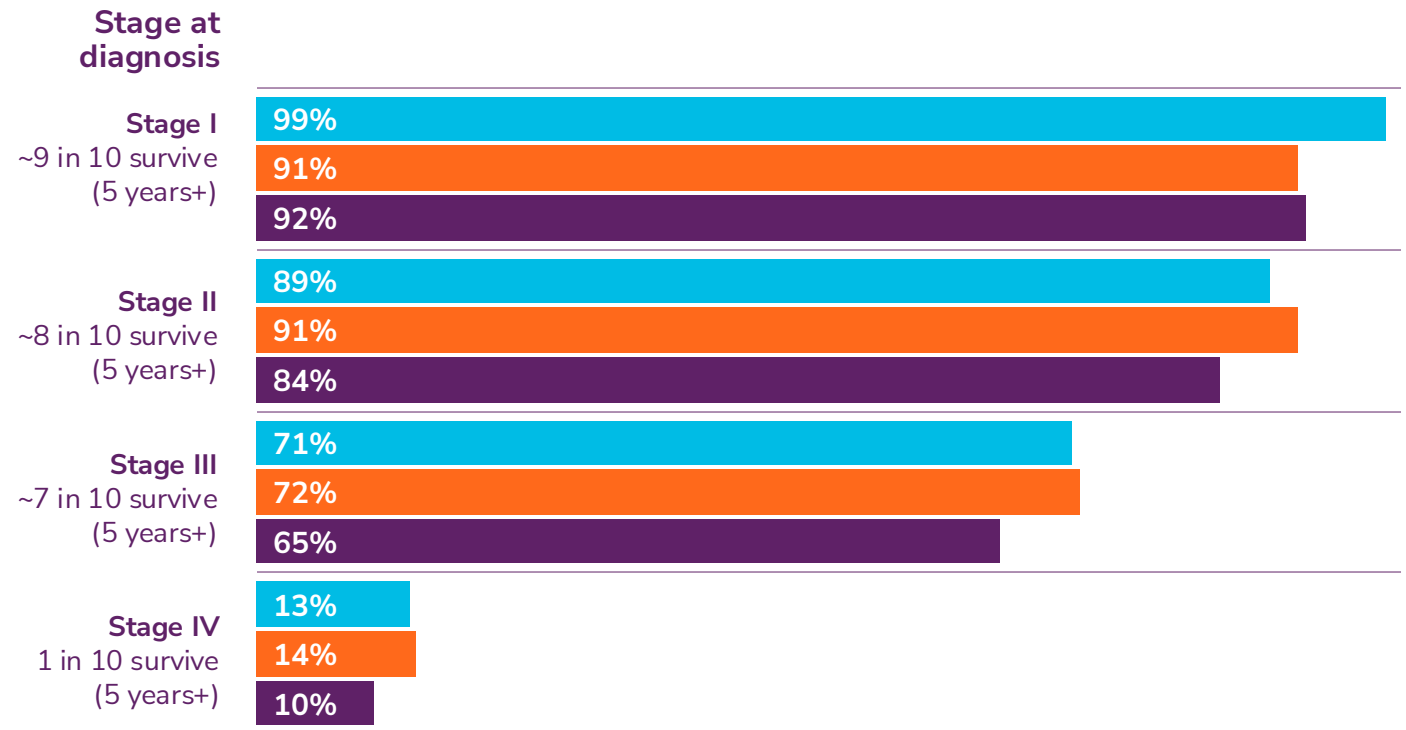
Diagnoses at Stage I or II only represent less than half of all CRCs diagnosed in:

	Stage I	Stage II
AUSTRALIA	22%	23%
US	37%	37%
UK	16%	21%

Disease treatment costs increase with later stage[#]



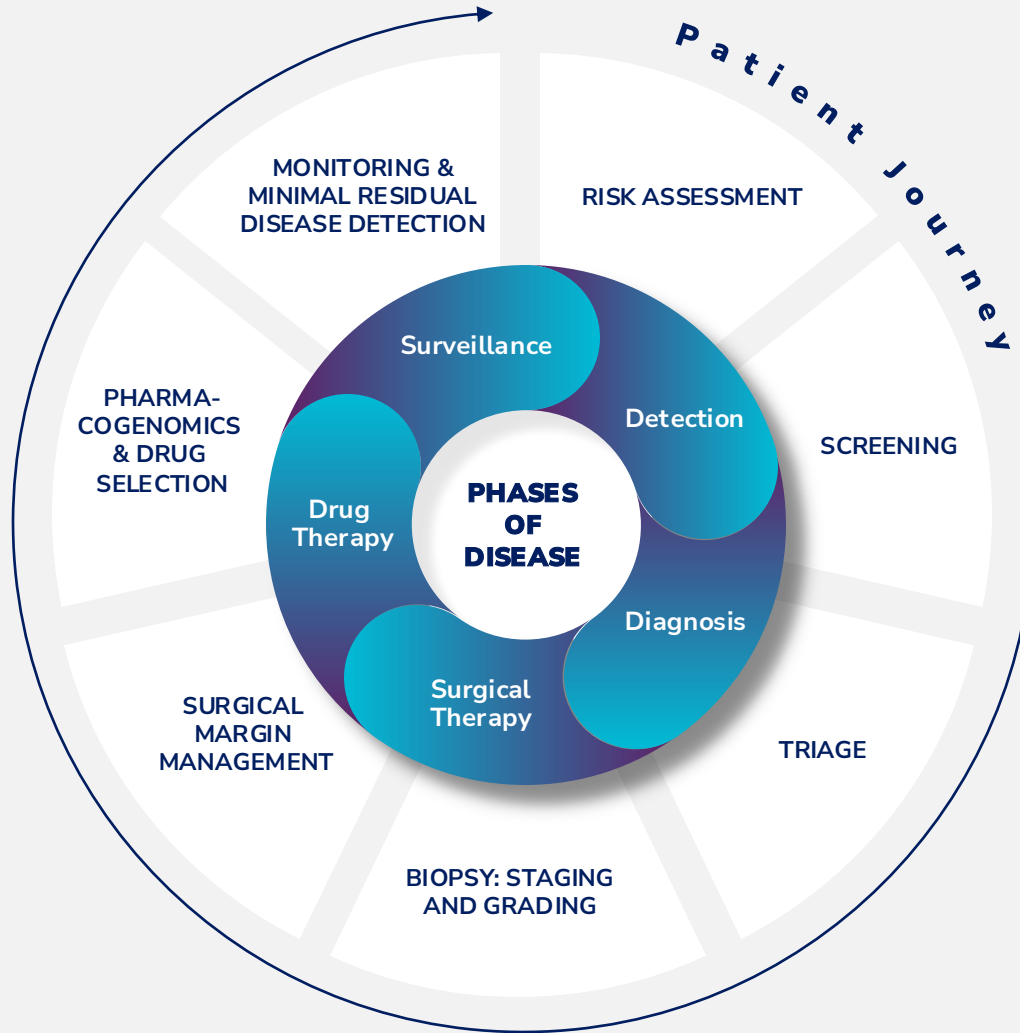
Missed detection of early-stage CRC results in poor survival rates



5-year survival rates in patients with CRC in US, UK and Australia

The Cancer Patient Journey

Multiple Diagnostic decisions support an individual through the patient journey



Multiomics: Proteins and Genes

Rhythm Biosciences has both a genomic and proteomic platform

Cancer is a complex disease that is typified by continuous change in cellular DNA, RNA (genome) and proteins (proteome).



The genome and proteome contain some **non-overlapping information**.



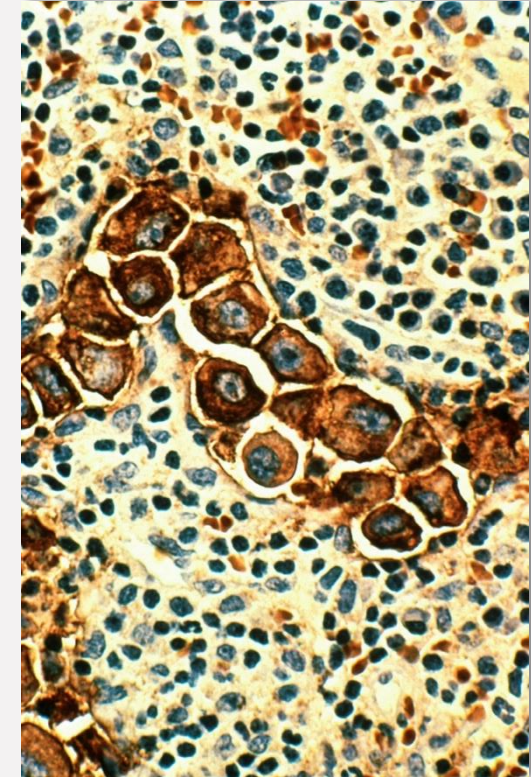
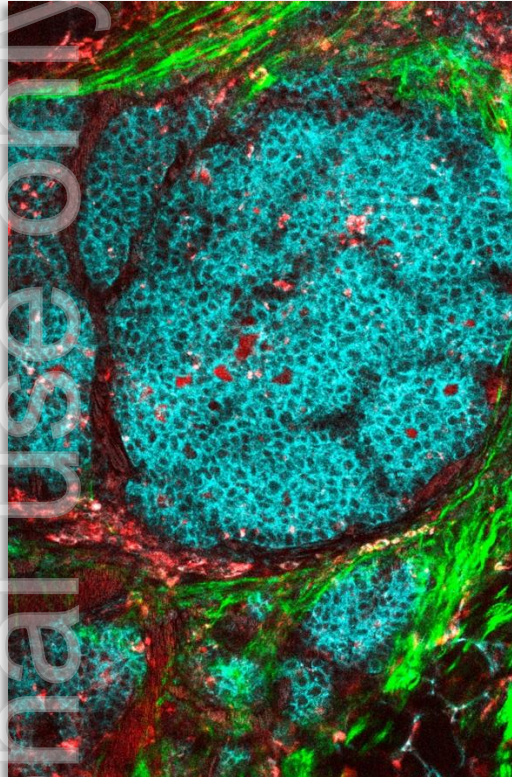
Disease risk prediction using genomic information predates disease by 10s of years.



Early disease detection (screening) uses genomic, proteomic or a combination (multiomic) data.



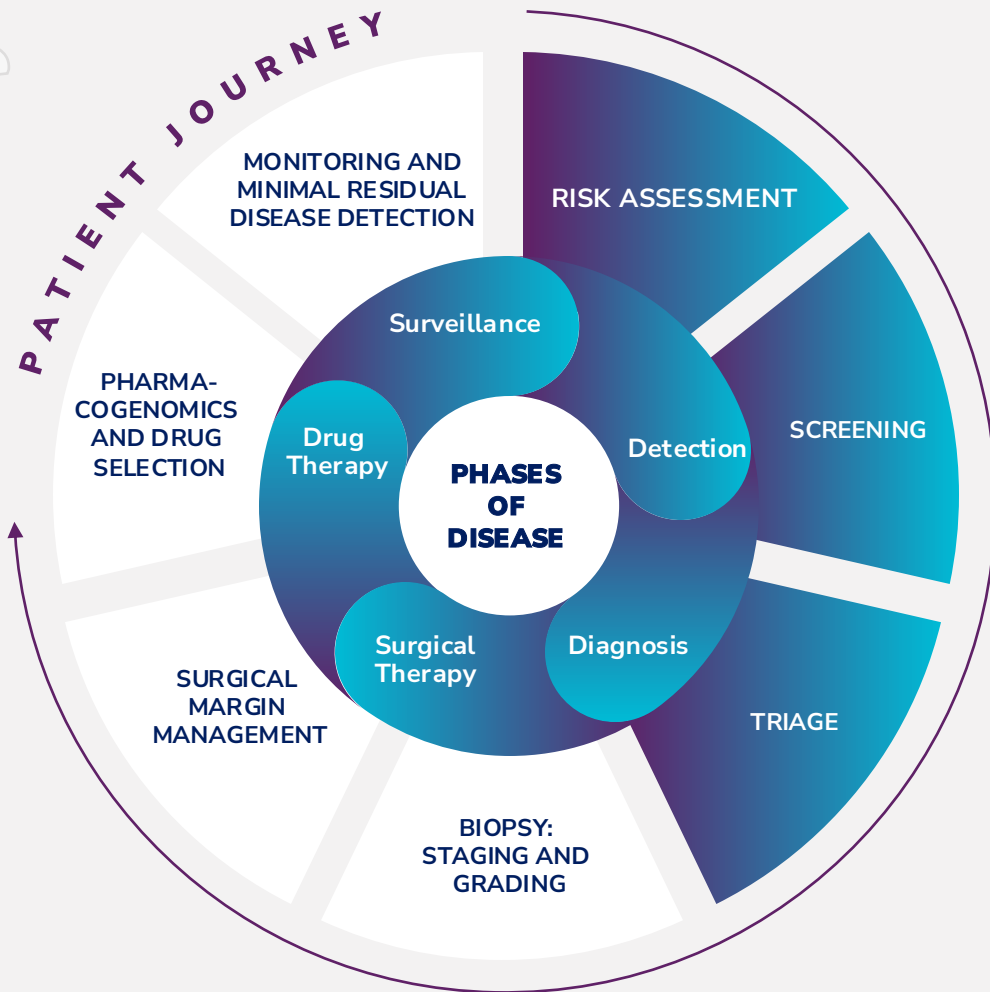
Having **capability in both fields** of research and clinical diagnostic capability is an important asset that strengthens the Company.



ersonal use only

Detecting cancer earlier and maintaining wellness

The power of the combination of the Rhythm capabilities and portfolio



Risk Assessment

Determination of risk profile

Personalised management of health



Disease Screening

Minimally-invasive detection of disease

Early detection of disease

A powerful combination enabling:

- Supports preventative measures to maintain wellness
- Increase the likelihood of earlier disease detection
- Promote better treatment outcomes for detected disease
- Potential use in drug clinical studies for patient stratification
- Potential for development as companion diagnostic tests

Suitable for 100s millions of individuals/patients globally

Example: geneType™ bowel cancer risk assessment of the general population to help guide usage of ColoSTAT®. Potentially leads to improved screening compliance, earlier disease detection and improved outcomes.

Personal use only

Our portfolio accesses different biology using similar products

Rhythm products are engineered for affordable quality



Risk Assessment

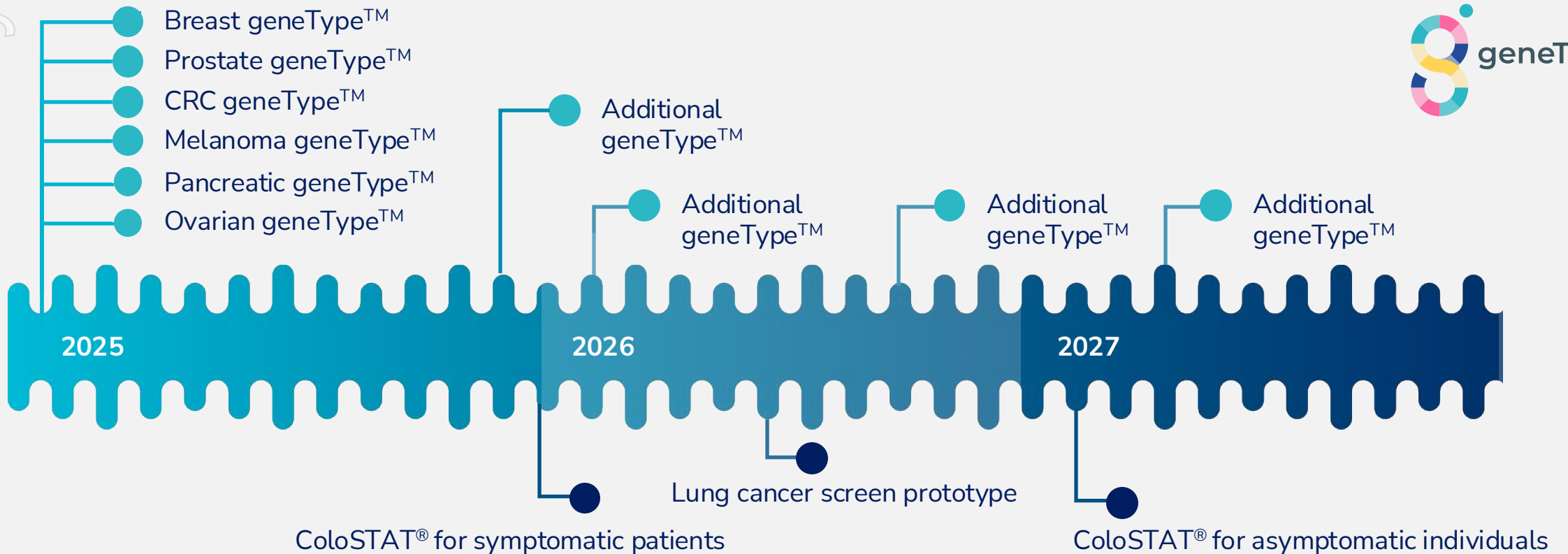
COLOSTAT®

Disease Screening

Product Format	Reagent kits/service	Reagent kit/service
Patient Sample	Cheek swab	Blood
What we measure	DNA variation and clinical history	Specific proteins
Core technology	SNPs	ELISA
Output	Relative risk over time	Probability of cancer present
Complexity	Simple	Very Simple
Intellectual property	Issued patents	Issued patents

Rhythm portfolio launch and development schedule

A diversified mix of development stages and underlying technologies will drive value



Personal use only

Rhythm is targeting a significant global market

A global market of >0.5bn individuals potentially served by the Rhythm product platform.



Genomic Platform: geneType™

Proteomic Platform: ColoSTAT® & Lung Cancer Screening

Healthy individuals seeking information about their personal cancer risk

Normal Active Risk Assessors
207 million customers

Higher Risk
69 million customers

Unscreened CRC
121 million patients

Unscreened high risk for CRC cancer investigating disease presence

Unscreened Lung Ca.
40 million patients

Unscreened high risk for lung cancer investigating disease presence

Higher risk individuals seeking personal risk information

Key:

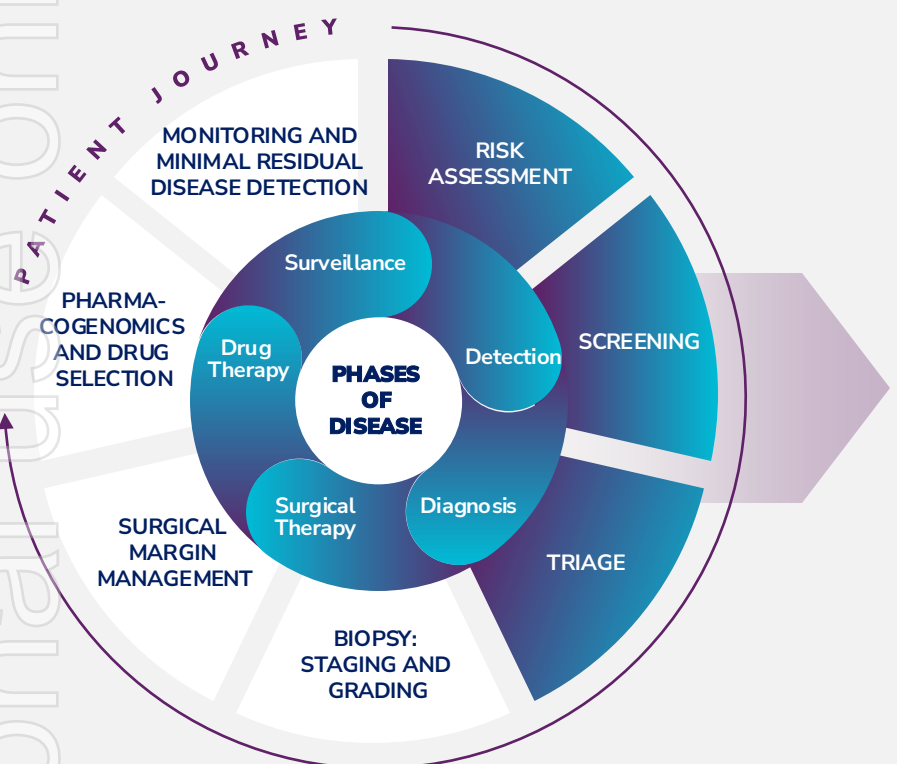
■ Area = 1m potential geneType™ customers

■ Area = 1m potential screening customers

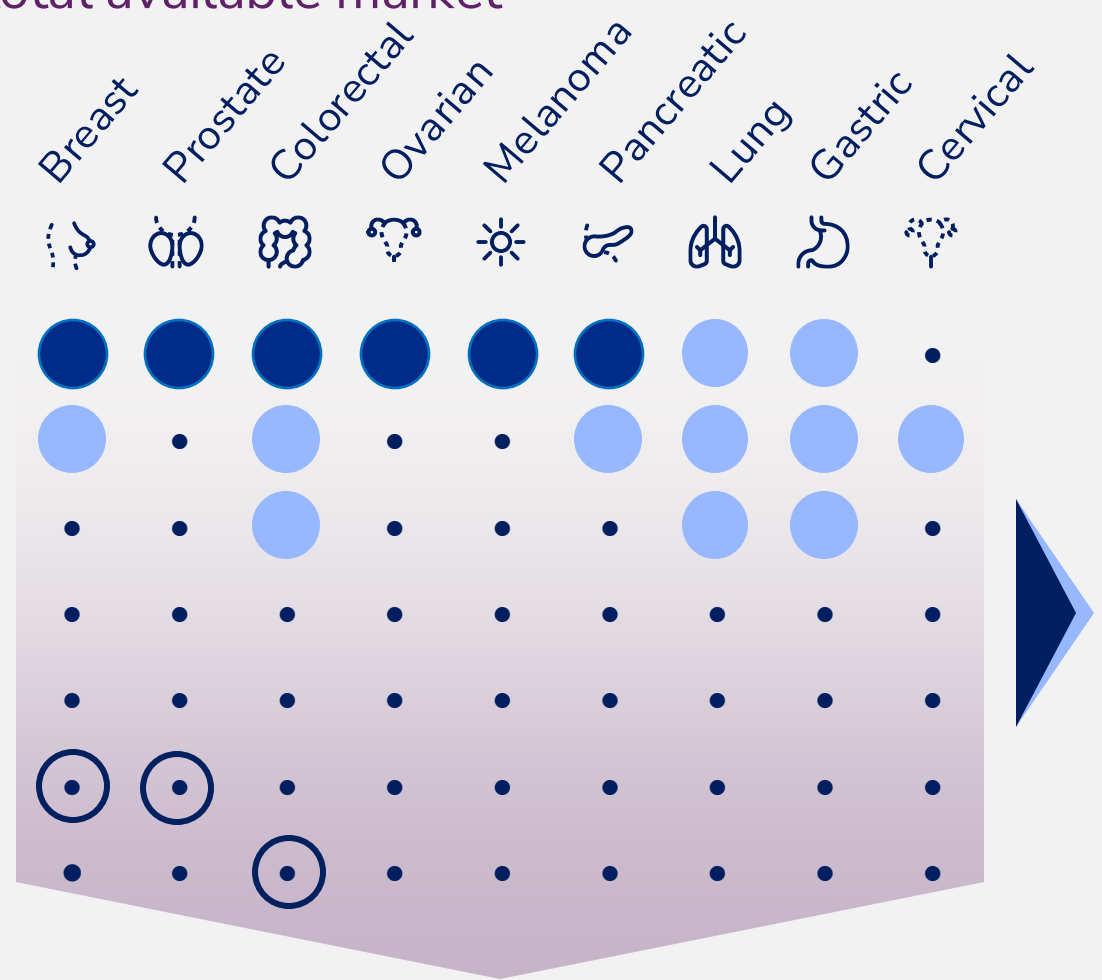
Our combined platforms supports a highly comprehensive approach to cancer diagnostics

The potential RHY product portfolio addresses a huge total available market

Personal use only



- Risk Assessment
- Screening
- Triage
- Biopsy
- Surgical Margins
- Drug Management
- Monitoring



Upcoming value inflection points



PRODUCT	ITEM	DESCRIPTION	COMPLETION DATE
ColoSTAT®	Kit Validation Ready	Kit Verification completion, production kits ready	Q2 CY 2025
ColoSTAT®	Independent clinical validation	Evaluation of final kit on independent clinical samples	Q3 CY 2025
geneType™	geneType™ strategic partnerships	Establishment of key commercial partners	Q3 CY 2025
geneType™	geneType™ menu expansion	Expansion of existing commercial portfolio	Q4 CY 2025
ColoSTAT®	Commercialisation	ColoSTAT® Partner's In House IVD launch	Q4 CY 2025
Lung cancer screening assay	Complete pre-clinical evaluation	Design of assay prototype	Q1 CY 2026

Rhythm Bioscience: An attractive investment opportunity



Overview

Rhythm's mission is to detect cancer earlier and reduce the burden of cancer. We are developing and selling proprietary, high value products and services designed to detect cancer earlier.

Growth

Rhythm is solving an important clinical and economic problem. We are preparing for rapid global commercial growth.

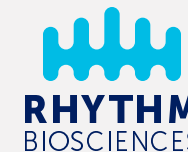
Reasons to Invest

1. Multi-product portfolio
2. Addressing a significant TAM
3. Planning for growth acceleration

ersonal use only

Recent ASX market updates

RHY recent ASX announcements – direct to asx.com.au



Date	Announcement	Link
26-May-25	<u>ColoSTAT® Beta kit verification and validation</u>	<u>ASX Link</u>
15-May-25	<u>Breast Cancer Risk Study University of Melbourne</u>	<u>ASX Link</u>
24-Apr-25	<u>Quarterly Activities Report and Appendix 4C 31 March 2025</u>	<u>ASX Link</u>
14-Apr-25	<u>RHY ISO13485 Recert Market Update</u>	<u>ASX Link</u>
19-Mar-25	<u>RHY Genotype Commercial Sales</u>	<u>ASX Link</u>
4-Feb-25	<u>Genotype Commercial Integration Completion</u>	<u>ASX Link</u>

NOTE: ASX Listing page

ersonal use only



Thank you!

david.atkins@rhythmbio.com

www.rhythmbio.com