

Wednesday 11 June 2025

Golconda Project

Mineralogy Study Confirms Presence of Gallium in Three Related Minerals at Golconda

- A preliminary mineralogical study has confirmed that **gallium** is concentrated in three minerals present in altered granite - **muscovite, kaolinite and potassium-feldspar**
- Gallium **is enriched in muscovite and kaolinite**; two minerals related to **widespread hydrothermal alteration** that is also related to **gold-silver-zinc mineralisation**
- Zones of increased alteration intensity are more likely to host higher concentrations of gallium

G50 Corp Limited (G50 Corp Limited or the Company) (ASX: G50) is pleased to announce the results of a preliminary mineralogical study of gallium bearing rocks, found at the company's Golconda Gold-Silver-Zinc Project in Arizona, USA.

The mineralogical study has shown that gallium is present in three specific minerals found in altered granite that also hosts gold-silver-zinc mineralisation at Golconda. The three minerals are muscovite, kaolinite and potassium-feldspar (k-feldspar) and together they make up approximately 38% of the rock. Quartz is the dominant mineral species present in these rocks and makes up approximately 56%.

The study has also shown that the muscovite and kaolinite are likely to be alteration products of k-feldspar and therefore related to the hydrothermal alteration event of the nearby Mineral Park porphyry copper deposit. Importantly, there appears to be greater enrichment of gallium in the muscovite and kaolinite when compared to the k-feldspar.

Mineral	Avg Abundance (%)	Gallium content (ppm)
Quartz	56	-
K-Feldspar	26	18
Muscovite	7	55
Kaolinite	5	41
Pyrite	2	0.2

The **presence of gallium in highly anomalous levels** in these minerals, combined with the minerals making up **38% of the rock** and that the rock itself is **coarse grained** are **positive characteristics** that are likely to aid in finding a mechanism to **concentrate** these minerals using **traditional mineral processing** methods such as **flotation**. Once a mineral concentrate is produced, gallium could be extracted from these minerals **using acid leach methods**.

G50 Corp's Managing Director, Mark Wallace, commented:

"We are very pleased to confirm the presence of gallium in three related minerals at Golconda from our phase 1 mineralogy test work. This is an extremely positive first step as we develop metallurgical test work programs to determine the optimal potential process route"

"Our multi month RC drilling program at Golconda is almost complete with first assay's due this month. The positive mineralogical results give us a new and larger scope for the gallium halo in conjunction with the significant high grade precious metals opportunity"

METHODOLOGY

Selected core samples from drill hole GDD02 were submitted to SGS Canada (Lakefield) for mineralogical investigation. The samples were analysed in two stages - the first being Electron Probe Microanalysis (EPMA) and the second being Laser Ablation Inductively Coupled Plasma Mass Spectrometry (LA-ICP-MS). The purpose of EPMA was to identify the minerals present and characterise mineral grain size, shape and relationship to other mineral grains. LA-ICP-MS was used to analyse the main minerals to determine the abundance of trace elements, specifically gallium.

EPMA and LA-ICP-MS were performed on muscovite, kaolinite, K-feldspar, chalcopryite, and pyrite.

Further test work is currently being conducted to determine the method by which to concentrate the gallium bearing minerals and to extract the gallium from a mineral concentrate.



Figure 1 - Argillic altered and veined (qtz-sulphide) granite from drill hole GDD02 where samples were taken for mineralogical study. The rock is composed of quartz (56%), k-feldspar (26%), muscovite (7%) and kaolinite (5%).

For personal use only

ABOUT GOLCONDA

G50's 2023 drilling tested multiple targets across a 250m by 1,500m area and intercepted multiple broad zones of gold, silver and gallium within zones of phyllic and argillic alteration. (Figure 2)

The district is centred upon the Mineral Park copper-molybdenum porphyry deposit (Figure 4). Polymetallic vein deposits extend southeast from Mineral Park through G50's patented claims. Shallow oxidized portions of these polymetallic veins were mined predominantly for gold and silver. Deeper unoxidized portions of these veins were mined for base metals, including lead, zinc and copper, with substantial precious metal credits.

The first pass mineralogical test work confirms that the gallium mostly occurs in the silicate mineral species within the large halo of argillic alteration previously untested by drilling. This positive outcome opens the possibility for identifying a broader and larger halo of gallium at the Golconda Project as highlighted by rock chip and soil sampling at the project by G50 in 2021. (Figure 3.)

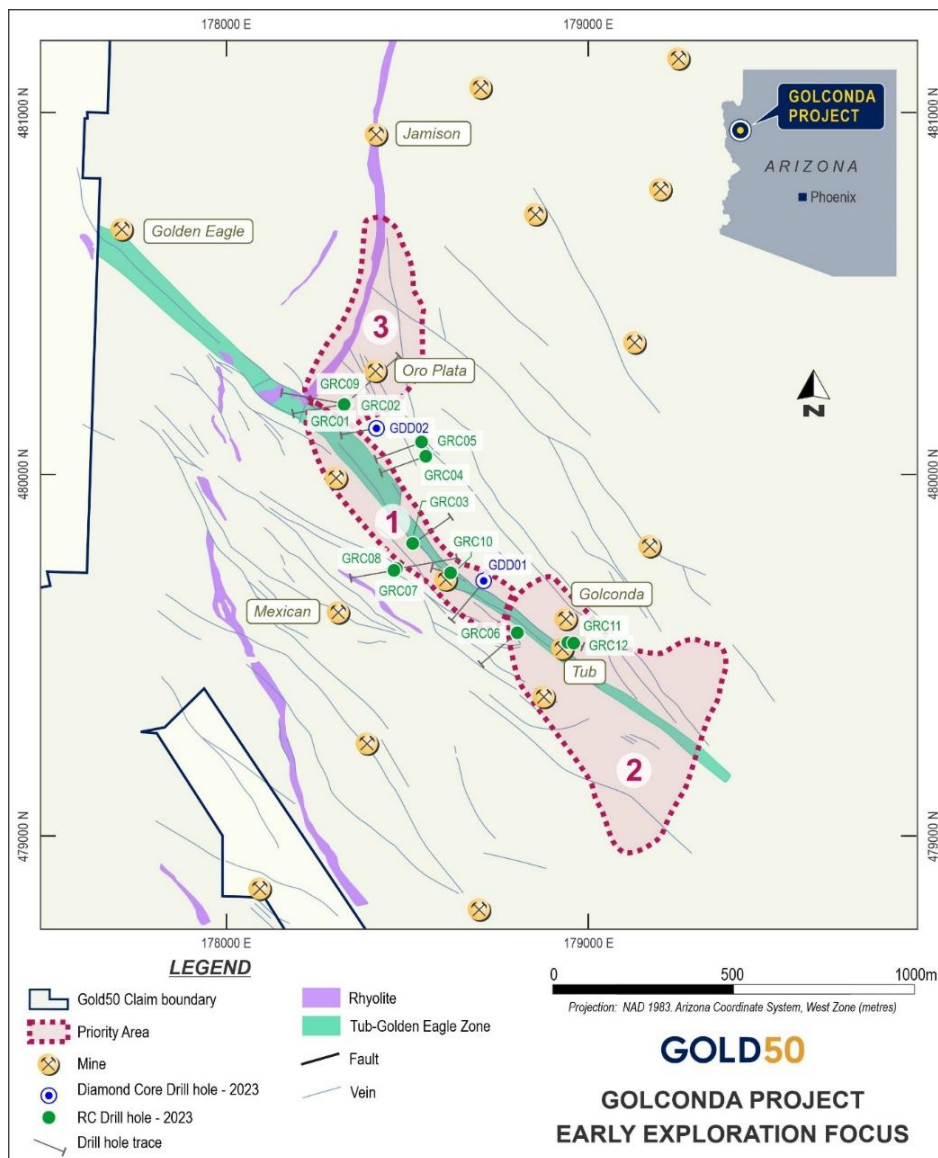


Figure 2 - Plan showing location of core and RC collars of holes drilled by Gold 50

NEXT STEPS

Further mineralogy testwork will begin this month on samples derived from recent RC drilling at Golconda. These results will be used to determine the method by which to concentrate the gallium bearing minerals and to further extract the gallium from a mineral concentrate.

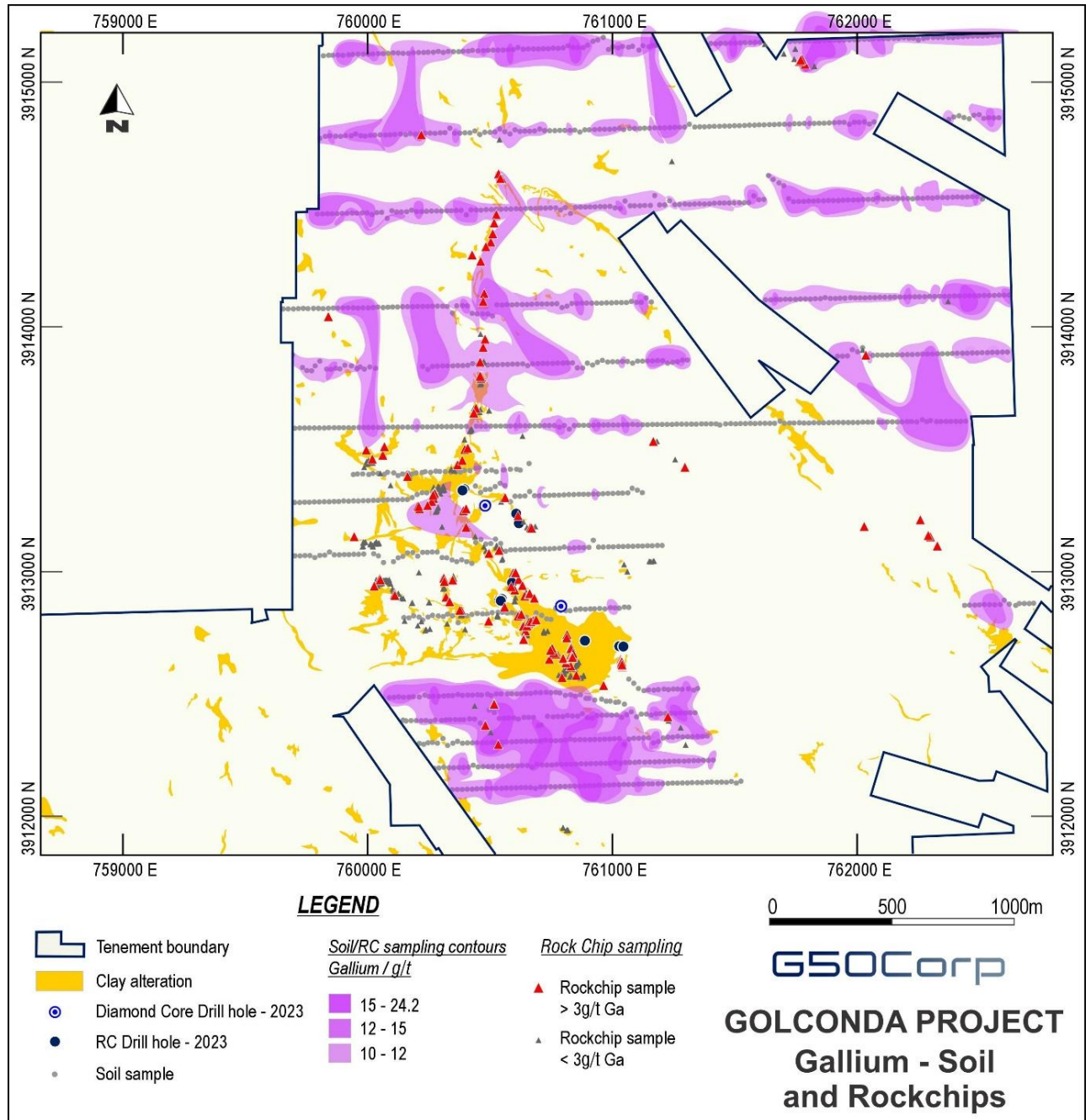


Figure 3 - Greater than 3 g/t gallium Rock Chips

For personal use only

For personal use only

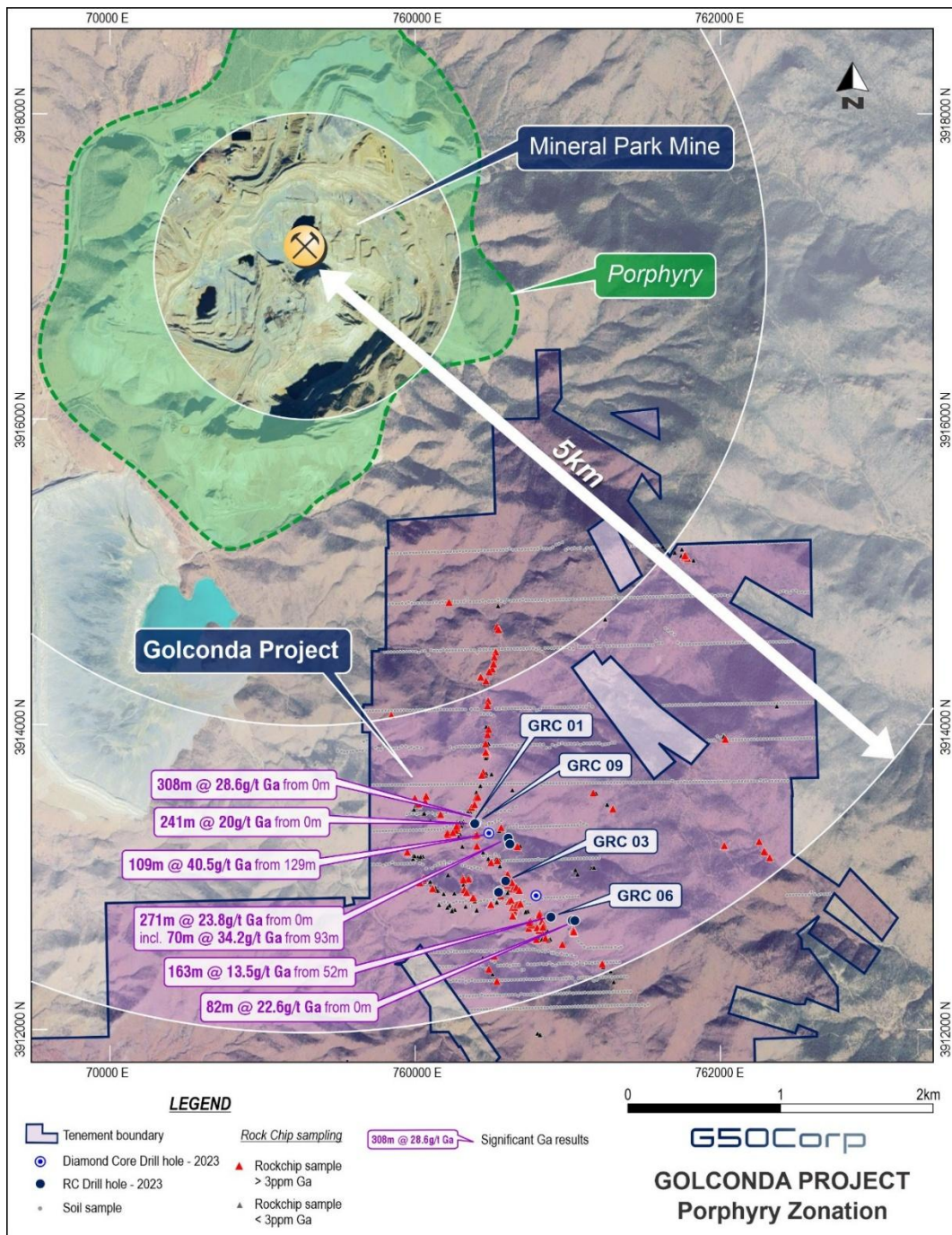


Figure 4 - Golconda Project relative to Mineral Park with significant gallium intercepts and location of select RC drilling collars

This announcement has been approved for release by the Board of G50.

For enquiries:

Mark Wallace
Managing Director
G50 Corp Limited
queries@g50corp.com
+61 2 8355 1819

For more information:

Visit our website www.g50corp.com
Subscribe to our [mailing list](#) to receive corporate news straight to your inbox

COMPETENT PERSONS STATEMENT

The information in this report that relates to Exploration Results is based on information compiled by Bernard Rowe, a Competent Person who is a Member of the Australian Institute of Geoscientists. Bernard Rowe is a shareholder and Non-Executive Director of G50 Corp Limited. Mr Rowe has sufficient experience that is relevant to the style of mineralisation and type of deposit under consideration and to the activity being undertaken to qualify as a Competent Person as defined in the 2012 Edition of the 'Australasian Code for Reporting of Exploration Results, Mineral Resources and Ore Reserves'. Bernard Rowe consents to the inclusion in the report of the matters based on his information in the form and context in which it appears.

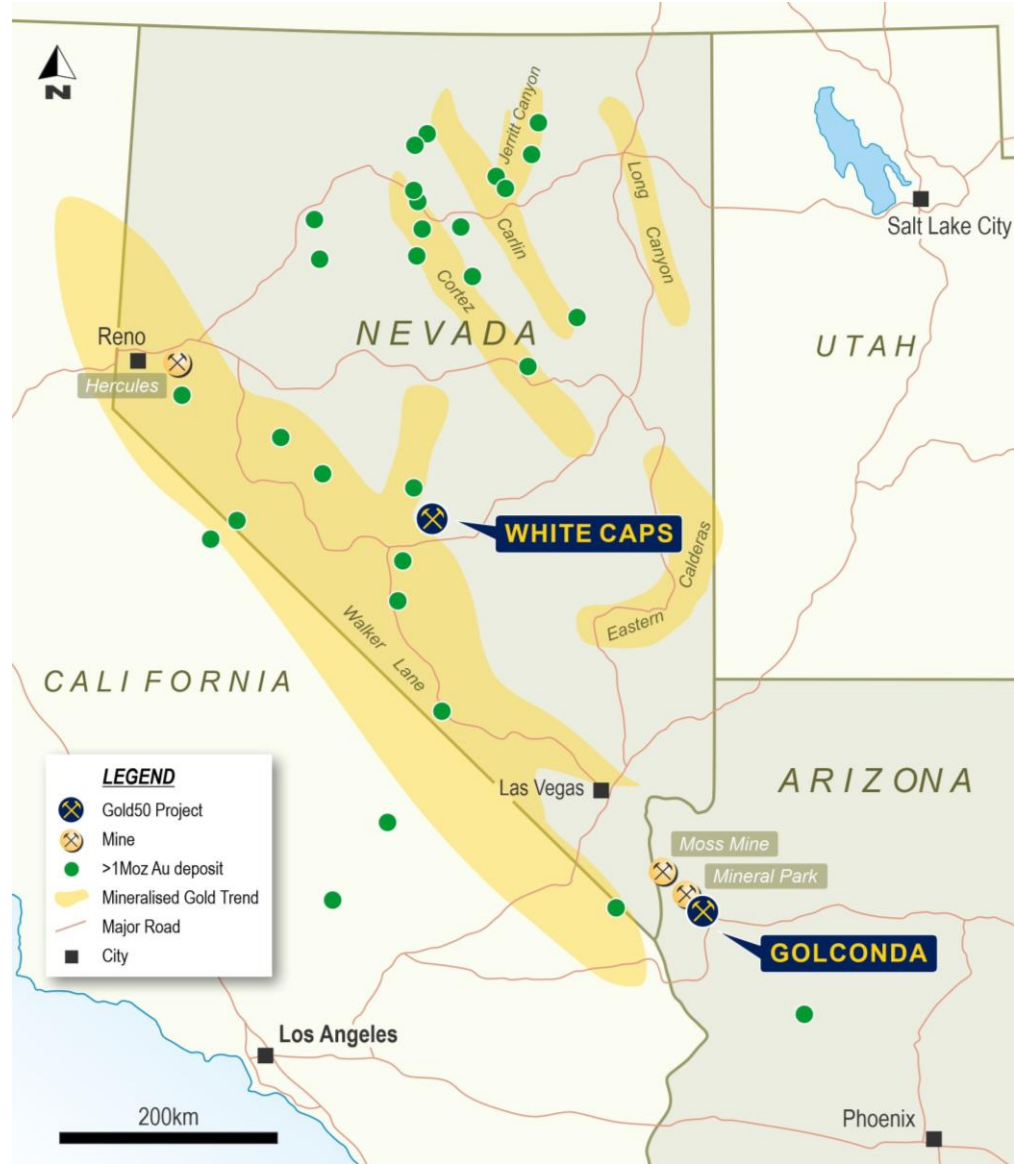
EXPLORATION INFORMATION EXTRACTED FROM ASX ANNOUNCEMENTS

In respect of Exploration Results referred to in this report and previously reported by the Company in accordance with JORC Code 2012, the Company confirms that it is not aware of any new information or data that materially affects the information included in the ASX announcements titled:

- "35m at 5.2 g/t Gold, Discovery at Golconda" - 19 June 2023
- "308m at 28.6 g/t Gallium at Golconda" - 27 July 2023
- "New Targets to Follow Up 6m at 546 g/t Silver at Golconda" - 14 October 2024

All material assumptions and technical parameters underpinning the information in the reports continue to apply and have not materially changed.

For personal use only



ABOUT G50

G50 is an exploration company focussed on the South West of the United States of America. G50 currently operates in Arizona at its Golconda Project and in Nevada at its White Caps Project.

G50 Corp Limited (ASX: G50)

APPENDIX A

Drill Hole Details

Hole ID	Easting (m)	Northing (m)	Elevation (m)	Azimuth	Dip	Total Depth (m)
GDD01	760791	3912856	1445	220	-60	281.6
GDD02	760483	3913270	1365	260	-60	239.0
GRC01	760389	3913332	1333	260	-60	288.0
GRC02	760395	3913335	1334	048	-50	307.8
GRC03	760590	3912954	1377	070	-45	167.6
GRC04	760618	3913196	1400	250	-60	265.2
GRC05	760606	3913235	1375	250	-60	271.3
GRC06	760888	3912716	1428	230	-70	265.2
GRC07	760544	3912879	1421	260	-60	242.3
GRC08	760548	3912883	1422	080	-40	216.4
GRC09	760392	3913334	1320	280	-45	253.0
GRC10	760698	3912874	1428	286	-55	115.8
GRC11	761029	3912694	1374	360	-90	82.3
GRC12	761045	3912693	1376	110	-45	21.3

Note: Collar co-ordinates are WGS84 / UTM Zone 11 (preliminary Non-Survey Grade collar coordinates)

For personal use only

JORC Code (2012) Table 1, Sections 1 and 2, G50 Corp Golconda Project

Section 1 Sampling Techniques and Data

(Criteria in this section apply to all succeeding sections.)

Criteria	JORC Code explanation	Commentary
Sampling techniques	<ul style="list-style-type: none"> Nature and quality of sampling (eg cut channels, random chips, or specific specialised industry standard measurement tools appropriate to the minerals under investigation, such as down hole gamma sondes, or handheld XRF instruments, etc). These examples should not be taken as limiting the broad meaning of sampling. Include reference to measures taken to ensure sample representivity and the appropriate calibration of any measurement tools or systems used. Aspects of the determination of mineralisation that are Material to the Public Report. In cases where 'industry standard' work has been done this would be relatively simple (e.g., 'reverse circulation drilling was used to obtain 1 m samples from which 3 kg was pulverised to produce a 30 g charge for fire assay'). In other cases more explanation may be required, such as where there is coarse gold that has inherent sampling problems. Unusual commodities or mineralisation types (e.g. submarine nodules) may warrant disclosure of detailed information. 	<ul style="list-style-type: none"> Samples from Reverse Circulation ("RC") percussion drilling over 1.52m intervals averaging approximately 5kg were collected and processed to produce a 30g charge fire assay for precious metals and ICP analysis for multi-element geochemistry. In all cases the entire hole was sampled. Industry standard methods were used for the collection, preparation and analysis of the samples. The drilling, sampling and assaying was undertaken by geologists and technicians contracted to Gold 50 US Inc. For mineralogy test work, samples of quarter-core were used from drill hole GDD02 collected from depths 171m and 230m.
Drilling techniques	<ul style="list-style-type: none"> Drill type (e.g. core, reverse circulation, open-hole hammer, rotary air blast, auger, Bangka, sonic, etc) and details (e.g. core diameter, triple or standard tube, depth of diamond tails, face-sampling bit or other type, whether core is oriented and if so, by what method, etc). 	<ul style="list-style-type: none"> Drill holes mentioned in this report are RC percussion drilled and diamond core drilled.
Drill sample recovery	<ul style="list-style-type: none"> Method of recording and assessing core and chip sample recoveries and results assessed. Measures taken to maximise sample recovery and ensure representative nature of the samples. Whether a relationship exists between sample recovery and grade and whether sample bias may have occurred due to preferential loss/gain of fine/coarse material. 	<ul style="list-style-type: none"> Holes were logged by an experienced geologist as they were drilled. Overall recoveries were high, as indicated by the assay sample weight, and the analytical split was obtained via a riffle splitter, ensuring samples were representative No sample bias was introduced by preferential loss of fine or coarse material There is no measured correlation between sample recovery and grade.
Logging	<ul style="list-style-type: none"> Whether core and chip samples have been geologically and geotechnically logged to a level of detail to support appropriate Mineral Resource estimation, mining studies and metallurgical studies. Whether logging is qualitative or quantitative in nature. Core (or costean, channel, etc) photography. The total length and percentage of the relevant intersections logged. 	<ul style="list-style-type: none"> All holes have been geologically logged over their entire length to a level of detail sufficient for a Mineral Resource estimation The logging is qualitative in nature The entire length of each hole was logged

For personal use only

<p>Sub-sampling techniques and sample preparation</p>	<ul style="list-style-type: none"> • If core, whether cut or sawn and whether quarter, half or all core taken. • If non-core, whether riffled, tube sampled, rotary split, etc and whether sampled wet or dry. • For all sample types, the nature, quality and appropriateness of the sample preparation technique. • Quality control procedures adopted for all sub-sampling stages to maximise representivity of samples. • Measures taken to ensure that the sampling is representative of the in-situ material collected, including for instance results for field duplicate/second-half sampling. • Whether sample sizes are appropriate to the grain size of the material being sampled. 	<ul style="list-style-type: none"> • Drill chip samples were split using a riffle splitter after passing through a cyclone. • Approximately 10kg was collected for every 1.52m drill interval, with an average of 5kg comprising the analytical sample for the lab and the remaining ~5kg being temporarily stored on site. • Duplicate samples were collected every 60th sample. Duplicates were prepared by the lab. • Based on this style of mineralization, the sample size is appropriate. • Samples are considered representative of the in-situ rock • High recoveries indicate samples are representative • Approximately 47 samples of stored half core from hole GDD02 were chosen. It was then sawn to create a quarter core for mineralogy test work. • For Phase 1 mineralogy test work the sample type, nature and quality are considered appropriate and representative of in-situ rock.
<p>Quality of assay data and laboratory tests</p>	<ul style="list-style-type: none"> • The nature, quality and appropriateness of the assaying and laboratory procedures used and whether the technique is considered partial or total. • For geophysical tools, spectrometers, handheld XRF instruments, etc, the parameters used in determining the analysis including instrument make and model, reading times, calibrations factors applied and their derivation, etc. • Nature of quality control procedures adopted (e.g. standards, blanks, duplicates, external laboratory checks) and whether acceptable levels of accuracy (i.e. lack of bias) and precision have been established. 	<ul style="list-style-type: none"> • Samples were analysed by Paragon Geochemical in Reno, Nevada using fire assay with a 30g charge, aqua regia 2 acid digestion and ICP mass spectrometry • Standards for Au, pulp blanks and coarse blanks were alternatively inserted into the sample batches at about one in every twenty samples. • Acceptable levels of accuracy were established • Mineralogy test work samples were analysed in two stages - the first being Electron Probe Microanalysis (EPMA) and the second being Laser Ablation Inductively Coupled Plasma Mass Spectrometry (LA-ICP-MS)
<p>Verification of sampling and assaying</p>	<ul style="list-style-type: none"> • The verification of significant intersections by either independent or alternative company personnel. • The use of twinned holes. • Documentation of primary data, data entry procedures, data verification, data storage (physical and electronic) protocols. • Discuss any adjustment to assay data. 	<ul style="list-style-type: none"> • Significant intersections were independently verified by two company personnel • Data is stored in digital format in a database • No twinning was undertaken. • No adjustment to assay data was required
<p>Location of data points</p>	<ul style="list-style-type: none"> • Accuracy and quality of surveys used to locate drill holes (collar and down-hole surveys), trenches, mine workings and other locations used in Mineral Resource estimation. • Specification of the grid system used. • Quality and adequacy of topographic control. 	<ul style="list-style-type: none"> • Drill hole locations were measured by GPS and are accurate to within approximately 2m • Down-hole surveys were conducted for RC holes 01, 02, 04, 05, 06, 07, 08, and 09. • The area of drilling and hole coordinates are shown in UTM Zone 11 meters, NAD83 grid system
<p>Data spacing</p>	<ul style="list-style-type: none"> • Data spacing for reporting of Exploration Results. • Whether the data spacing and distribution is 	<ul style="list-style-type: none"> • Drill holes were irregularly spaced, ranging between 40-260m between the nearest hole. 3 drill holes were fans drilled from the same

and distribution	<p>sufficient to establish the degree of geological and grade continuity appropriate for the Mineral Resource and Ore Reserve estimation procedure(s) and classifications applied.</p> <ul style="list-style-type: none"> Whether sample compositing has been applied. 	<p>site as another drill hole. 2 holes were drilled in opposite directions from the same pad.</p> <ul style="list-style-type: none"> Spacing is not considered sufficient to establish geological grade and continuity appropriate for a Mineral Resource estimation. No sample compositing has been applied
Orientation of data in relation to geological structure	<ul style="list-style-type: none"> Whether the orientation of sampling achieves unbiased sampling of possible structures and the extent to which this is known, considering the deposit type. If the relationship between the drilling orientation and the orientation of key mineralised structures is considered to have introduced a sampling bias, this should be assessed and reported if material. 	<ul style="list-style-type: none"> Drill holes were inclined between -45 and -90 degrees, appropriate for the steeply dipping mineralized geologic structure being targeted. The drill angle steepened down-hole in most drill holes. GRC03 was drilled down dip on a vein because of restricted access.
Sample security	<ul style="list-style-type: none"> The measures taken to ensure sample security. 	<ul style="list-style-type: none"> The drill personnel and sampling procedure were regularly monitored. Samples were securely stored on-site and then collected from site by Paragon Geochemical and transported to their laboratory by truck
Audits or reviews	<ul style="list-style-type: none"> The results of any audits or reviews of sampling techniques and data. 	<ul style="list-style-type: none"> A review of the sampling techniques and data storage was completed by a consulting geologist No items of concern were identified

Section 2 Reporting of Exploration Results

(Criteria listed in the preceding section also apply to this section.)

Criteria	JORC Code explanation	Commentary
Mineral tenement and land tenure status	<ul style="list-style-type: none"> Type, reference name/number, location and ownership including agreements or material issues with third parties such as joint ventures, partnerships, overriding royalties, native title interests, historical sites, wilderness or national park and environmental settings. The security of the tenure held at the time of reporting along with any known impediments to obtaining a licence to operate in the area. 	<ul style="list-style-type: none"> The tenements (unpatented and patented mining claims) are owned by JCR Mining Ventures LLC and leased to Gold 50 with an option to acquire 100% ownership. The unpatented mining claims are located on US federal land administered by the Bureau of Land Management (BLM) There is one royalty on the claims - a 2% NSR to JCR Mining Ventures LLC There are no known impediments to exploration or mining in the area
Exploration done by other parties	<ul style="list-style-type: none"> Acknowledgment and appraisal of exploration by other parties. 	<ul style="list-style-type: none"> Historic mining in the district is mostly confined to the oxidized parts of veins. The Golconda mine was developed in sulfide mineralization to approximately the 1,400' (427m) level. Modern drilling prior to Gold50 focused mostly on defining blocks adjacent to previously mined sections of the Golconda Vein and Tub Vein with 2 RC holes testing the Mexican Vein. Gamin Minerals mapped the surface in the 1980's and the alteration map is adopted by Gold 50.
Geology	<ul style="list-style-type: none"> Deposit type, geological setting and style of mineralisation. 	<ul style="list-style-type: none"> Mesothermal polymetallic veins Located in the Basin and Range Province of

For personal use only

		<p>Arizona.</p> <ul style="list-style-type: none"> • Gold-silver and base metal mineralization associated with emplacement of the adjacent Mineral Park copper-molybdenum porphyry is hosted within faults and fissure veins. • Gallium is associated with argillic alteration related to the nearby porphyry intrusion.
Drill hole Information	<ul style="list-style-type: none"> • A summary of all information material to the understanding of the exploration results including a tabulation of the following information for all Material drill holes: <ul style="list-style-type: none"> ○ easting and northing of the drill hole collar ○ elevation or RL (Reduced Level - elevation above sea level in metres) of the drill hole collar ○ dip and azimuth of the hole ○ down hole length and interception depth ○ hole length. • If the exclusion of this information is justified on the basis that the information is not Material and this exclusion does not detract from the understanding of the report, the Competent Person should clearly explain why this is the case. 	Refer to Table in Appendix A of this report.
Data aggregation methods	<ul style="list-style-type: none"> • In reporting Exploration Results, weighting averaging techniques, maximum and/or minimum grade truncations (e.g. cutting of high grades) and cut-off grades are usually Material and should be stated. • Where aggregate intercepts incorporate short lengths of high grade results and longer lengths of low grade results, the procedure used for such aggregation should be stated and some typical examples of such aggregations should be shown in detail. • The assumptions used for any reporting of metal equivalent values should be clearly stated. 	<ul style="list-style-type: none"> • Grades were calculated by simple weighted averaging. • Low-grade intervals apply a 10g/t gallium lower cut-off. A minimum of three samples are required for reporting and a maximum of 6m (4 samples) below cut-off can be included as internal dilution. • No upper cutting was applied. • No metal equivalent values are being reported.
Relationship between mineralisation widths and intercept lengths	<ul style="list-style-type: none"> • These relationships are particularly important in the reporting of Exploration Results. • If the geometry of the mineralisation with respect to the drill hole angle is known, its nature should be reported. • If it is not known and only the down hole lengths are reported, there should be a clear statement to this effect (e.g. 'down hole length, true width not known'). 	<ul style="list-style-type: none"> • Drilling generally intersected mineralization at approximately 35-65 degrees, although there is some uncertainty around the geometry of some structures that were intersected. • Hole GRC03 was drilled down-dip at a shallow angle to the dip of the mineralized structure due to restricted access. True width of the intersection in GRC03 is not known. • Only down-hole lengths are reported, not true widths.
Diagrams	<ul style="list-style-type: none"> • Appropriate maps and sections (with scales) and tabulations of intercepts should be included for any significant discovery being reported. These should include, but not be limited to a plan view of drill hole collar locations and appropriate sectional views. 	<ul style="list-style-type: none"> • A summary map is included in the report showing the general location of the drilling and other relevant information.

<p>Balanced reporting</p>	<ul style="list-style-type: none"> Where comprehensive reporting of all Exploration Results is not practicable, representative reporting of both low and high grades and/or widths should be practiced to avoid misleading reporting of Exploration Results. 	<ul style="list-style-type: none"> The results reported are considered representative and are consistent with previously announced results (drill) from this project.
<p>Other substantive exploration data</p>	<ul style="list-style-type: none"> Other exploration data, if meaningful and material, should be reported including (but not limited to): geological observations; geophysical survey results; geochemical survey results; bulk samples - size and method of treatment; metallurgical test results; bulk density, groundwater, geotechnical and rock characteristics; potential deleterious or contaminating substances. 	<ul style="list-style-type: none"> All relevant information has been disclosed
<p>Further work</p>	<ul style="list-style-type: none"> The nature and scale of planned further work (eg tests for lateral extensions or depth extensions or large-scale step-out drilling). Diagrams clearly highlighting the areas of possible extensions, including the main geological interpretations and future drilling areas, provided this information is not commercially sensitive. 	<ul style="list-style-type: none"> Further work includes surface trenching south along the Tub zone Developing a drilling program to follow up positive results, down dip and along strike, and continue to test extension of the Tub zone.