

18 June 2025

Board and management

Non-Executive Chairman
Mark Connelly

Managing Director & CEO
Amanda Buckingham

Non-Executive Director
Dianmin Chen

Chief Financial Officer
Graeme Morissey

GM Corporate & GC
Stuart Burvill

Company Secretary
David Palumbo

Exploration Manager –
Western Australia
Thomas Dwight

Exploration Manager –
Nevada
Steve McMillin

Chief Geologist
Peng Sha

Capital structure

Last traded price
A\$0.11.5

Current shares on issue
1,133 M

Current market
capitalisation
A\$130 M

Cash
A\$7.9 M (at 31 Mar 2025)

Debt
Zero

Ricciardo Drilling Delivers 1,148 g/t Au Intersection

HIGHLIGHTS:

- **Visible gold** encountered in a recent diamond drill hole completed at the Ardmore end of Ricciardo (RDRC068).
- Expedited assays for this section of core returned **2m @ 116.3 g/t Au from 151m to 153m, including 0.2m @ 1,148 g/t Au from 152.0m to 152.2m.**
- This represents a key development in the exploration of Ricciardo:
 - It is the first time visible gold has been returned in Warriedar's drilling of Ricciardo. This demonstrates the **potential for Ricciardo to host significant free milling gold mineralisation.**
 - It represents high-grade gold mineralisation located outside of the known high-grade shoots at Ricciardo. This demonstrates the **potential for the current drilling program to identify a new style of high-grade mineralisation at Ricciardo.**
- Assays from the remaining core in this hole, along with several other holes recently drilled at Ardmore, are pending.
- Two diamond drill rigs have been onsite at Golden Range, drilling at the Windinne Well and M1 deposits. An RC rig commenced drilling at Ricciardo earlier this week, marking the commencement of the Ricciardo **fast-tracked program**. Stage 1 of this program involves drilling 105 holes for approx. 29,000 m, using four rigs concurrently.
- Warriedar is well capitalised with a cash balance of approximately A\$21.8 million after completion of its recent equity placement.

Warriedar Resources Limited (ASX: WA8) (**Warriedar** or the **Company**) is pleased to advise of the receipt of a limited batch of initial assays from recent drilling at the flagship Ricciardo gold-antimony deposit, part of its broader Golden Range Project located in the Murchison region of Western Australia.

The assays relate to a 3.2m section of core from one diamond hole at Ardmore (RDRC068), which contained a 2m interval that was visibly gold mineralised. Given the occurrence of visible gold is highly unusual at Ricciardo, assaying of this section of the hole was expedited. The remaining assays for this hole, along with the three (3) other holes recently drilled into the Ardmore end of Ricciardo, remain pending.

Warriedar Managing Director and CEO, Amanda Buckingham, commented:

“The identification of visible gold is always an exciting development in exploration. However, in this case the primary excitement is in what it might actually represent for Ricciardo moving forward. The potential existence of significant zones of high-grade, free-milling material within primary mineralisation at Ricciardo would be a further

game-changer for its development. That potential aside, it is also always rewarding to identify a new zone, and style, of high-grade gold mineralisation because it delivers the obvious potential for further such zones to exist waiting to be discovered.”

The Ricciardo context

The Ricciardo Gold Deposit (**Ricciardo**) is located on existing mining leases, 100% owned by Warriedar, in the Murchison Region. It is approximately 300 km east of Geraldton and 420 km by road north-northeast of Perth. Sited approximately 8 km south of the Golden Range process plant, it resides within the Golden Range group of historic open pit mines and deposits.

Surrounding operations and projects include Capricorn Metals’ Mt Gibson Gold Project (approx. 90km south), the Golden Grove processing facility (approx. 26 km north) and Vault Minerals’ high-grade Rothsay Gold Mine (approx. 40 km south-west) (Figure 1).

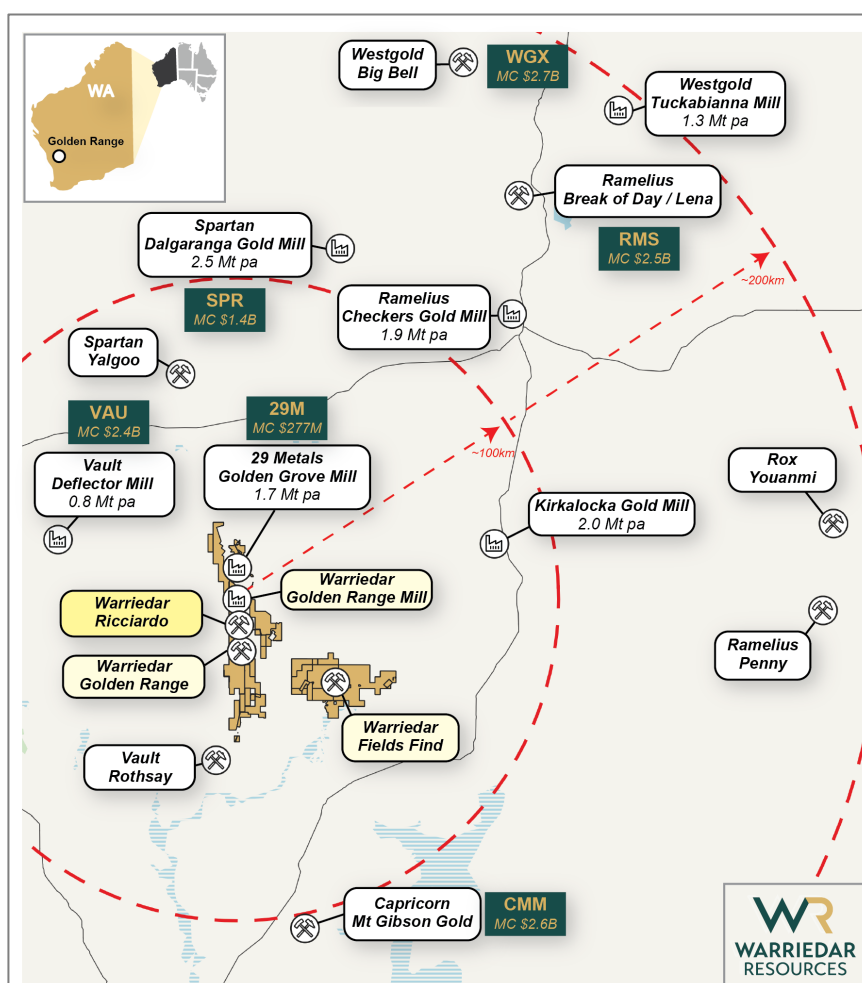


Figure 1: The location of the Ricciardo Gold Deposit within the Golden Range Project; within the broader Southern Murchison region.

The Ricciardo gold system spans a strike length of approximately 2.3km, with very limited drilling having been undertaken below 100m depth prior to Warriedar’s ownership. Historical mining operations at Ricciardo were primarily focused on oxide material, with the transition and primary sulphides mineralisation not systematically explored.

Warriedar's drilling of Ricciardo during CY2024 achieved excellent results, demonstrating high-grade extensions to the Mineral Resource. While exploring for gold, the Warriedar team also uncovered the significant antimony potential at Ricciardo.

As a result of this drilling success, two successive Mineral Resource Estimate (**MRE**) upgrades have been achieved for Ricciardo:

- **November 2024 MRE update:** upgrade to 16.44 Mt @ 1.8 g/t Au for 947.5 koz gold (see WA8 ASX release 18 November 2024).
- **May 2025 MRE update:** upgrade to 24.5Mt @ 2.5 g/t AuEq for 1.96 Moz AuEq (including 1.04 Moz Au and 60.3 kt Sb) (refer WA8 ASX release 1 May 2025).

In both cases/updates, the MRE was approximately doubled relative to the prior estimate, in the first instance via gold-only, and in the second with the inclusion of the maiden antimony resource (which also happens to represent Australia's largest open-pit antimony resource).



Figure 2: [TOP] shows the core from RDRC068, 149.44m to 153.13m, the yellow box highlights the interval 2m @116.3g/t from 151m to 153 m. The red box highlights the interval 0.2m @ 1,148 g/t Au from 152m-152.2m. [BOTTOM_LEFT] shows some core pieces from 152m-152.2m. [BOTTOM_RIGHT] shows a close-up of one of the pieces of core from the Bottom-Left figure with visible gold.

Identification of visible gold mineralisation at Ardmore

The assays reported in this release relate to a 3.2m section of core from one recent diamond hole at Ardmore (RDRC068), which contained a 2m interval that was visibly gold mineralised. Given the occurrence of visible gold is highly unusual at Ricciardo, the assaying of this section of the hole was expedited.

The assay results returned for this section of core from RDRC068 were 2m @116.3 g/t from 151m to 153m, including 0.2m @ **1,148 g/t Au** from 152.0m to 152.2m.

A photo of the section of core exhibiting visual gold is shown in Figure 2.

The remaining assays for this hole, along with the three (3) other holes recently drilled into the Ardmore end of Ricciardo, remain pending.

The location of RDRC068, overlying the previously released long section of the Ricciardo gold MRE, is shown in Figure 3. It is noteworthy that this newly identified super high-grade / visible gold zone in the Ardmore area is proximate to both the high-grade gold and high-grade antimony zone. However, the visible gold interval does not overlap within the existing high-grade gold zone, and the grade of the visible gold interval is substantially higher than the grade that the current resource model projects.

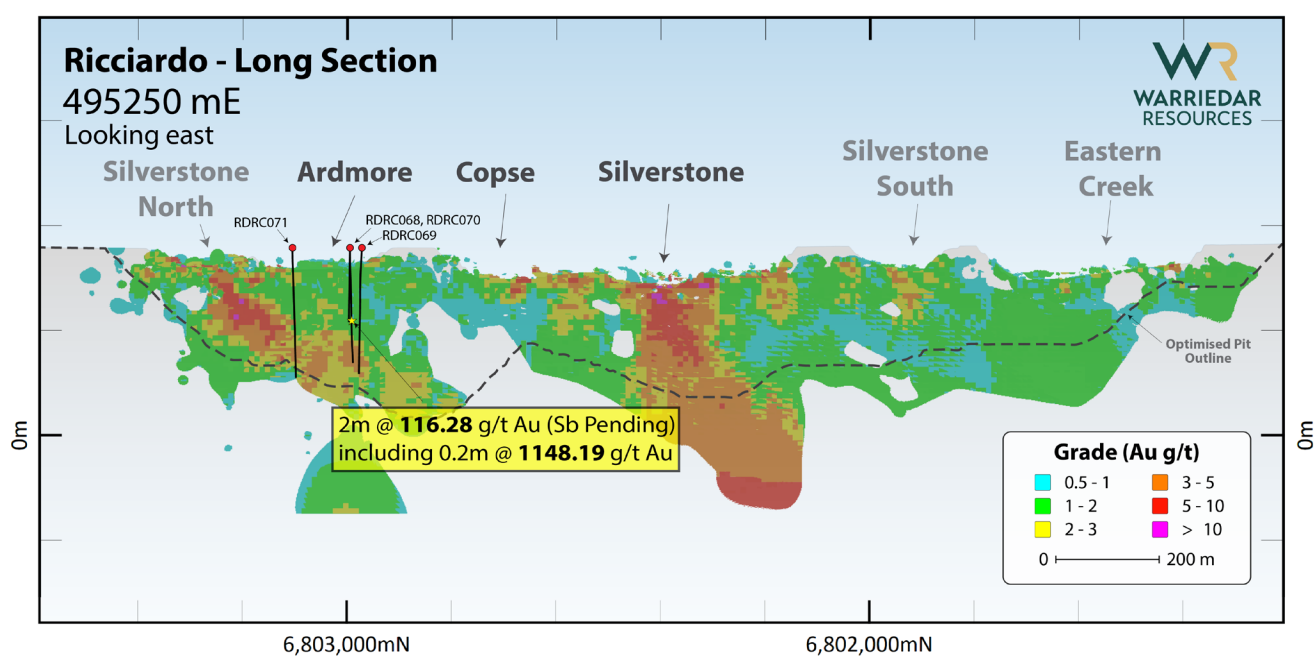


Figure 3: long section through the Ricciardo gold Resource, showing the four new holes drilled at the Ardmore end. The location of the interval reported in this release is highlighted and annotated.

Further drilling in this area is required to be confident of a meaningful grade increase in the MRE here. However, the identification of visible gold within the fresh/primary rock zone at Ricciardo is an extremely positive step forward. It represents the identification of a fundamentally different style of high-grade gold mineralisation at Ricciardo, which may deliver significant upside to the potential economic development and processing options for Warriedar's flagship asset.

In particular, it opens possibilities for multiple styles of mineralisation to be hosted on the same structure. An example would be the Fosterville gold deposit in Victoria¹, where a primary visible gold event overprints the sulphide mineralisation at depth. Naturally, more evaluation and drilling is required to understand better such potential and its implications for MRE upgrade and growth.

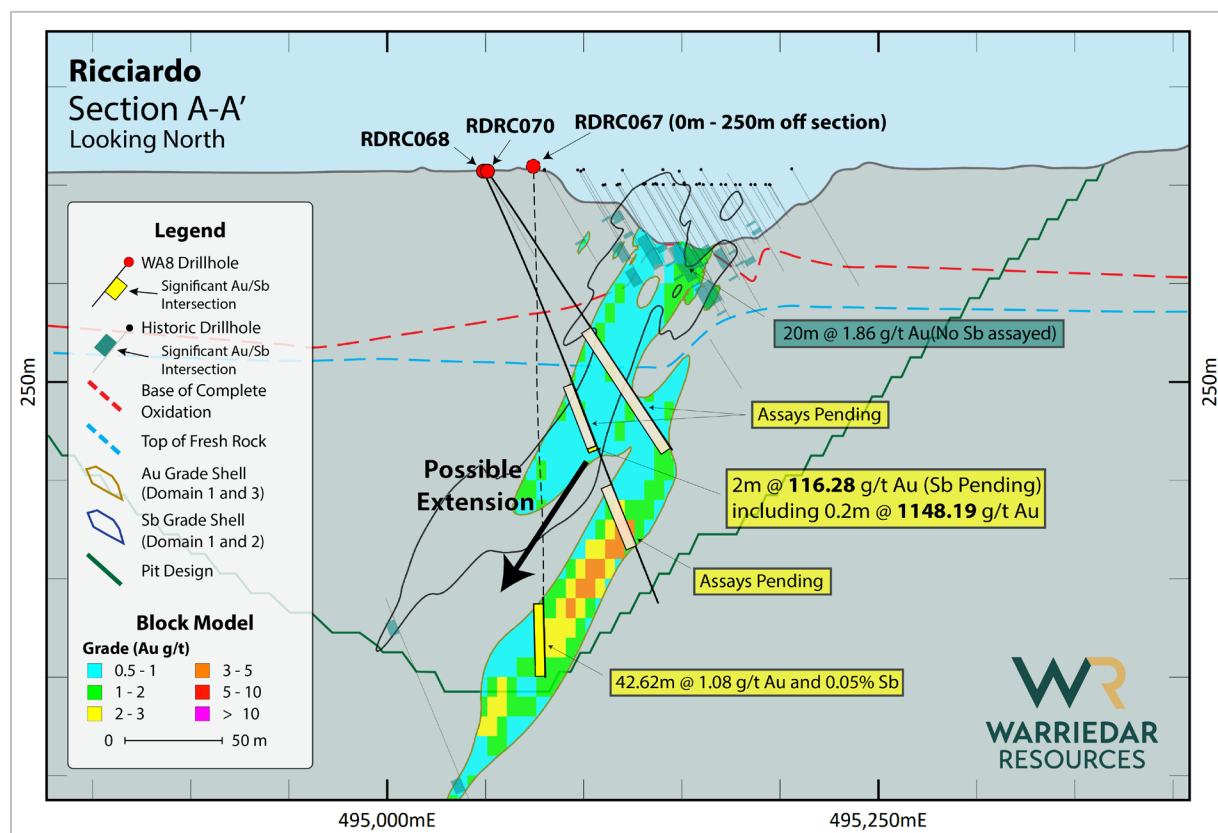


Figure 4: Cross through the Ricciardo gold deposit showing the location of the high-grade gold assay results from RDR068. Assays from the remainder of the hole are pending.

Figure 4 shows a cross-section, and Figure 5 shows a plan view of the visible gold interval. Again, it is readily observable that this super high-grade interval is not currently in a previously identified high-grade zone within the existing Ricciardo MRE. The relationship of the newly identified visible gold mineralisation with known high-grade gold and antimony mineralisation at Ardmore is currently unknown.

These results will be digested, and further drilling at Ardmore will help the geoscience team understand the significance of this result and the broader potential for multiple styles of high-grade gold mineralisation at Ricciardo.

¹ Fuller T. and Hann I. 2017, Report on the Mineral Resources & Mineral Reserves of The Fosterville Gold Mine, Victoria Australia.

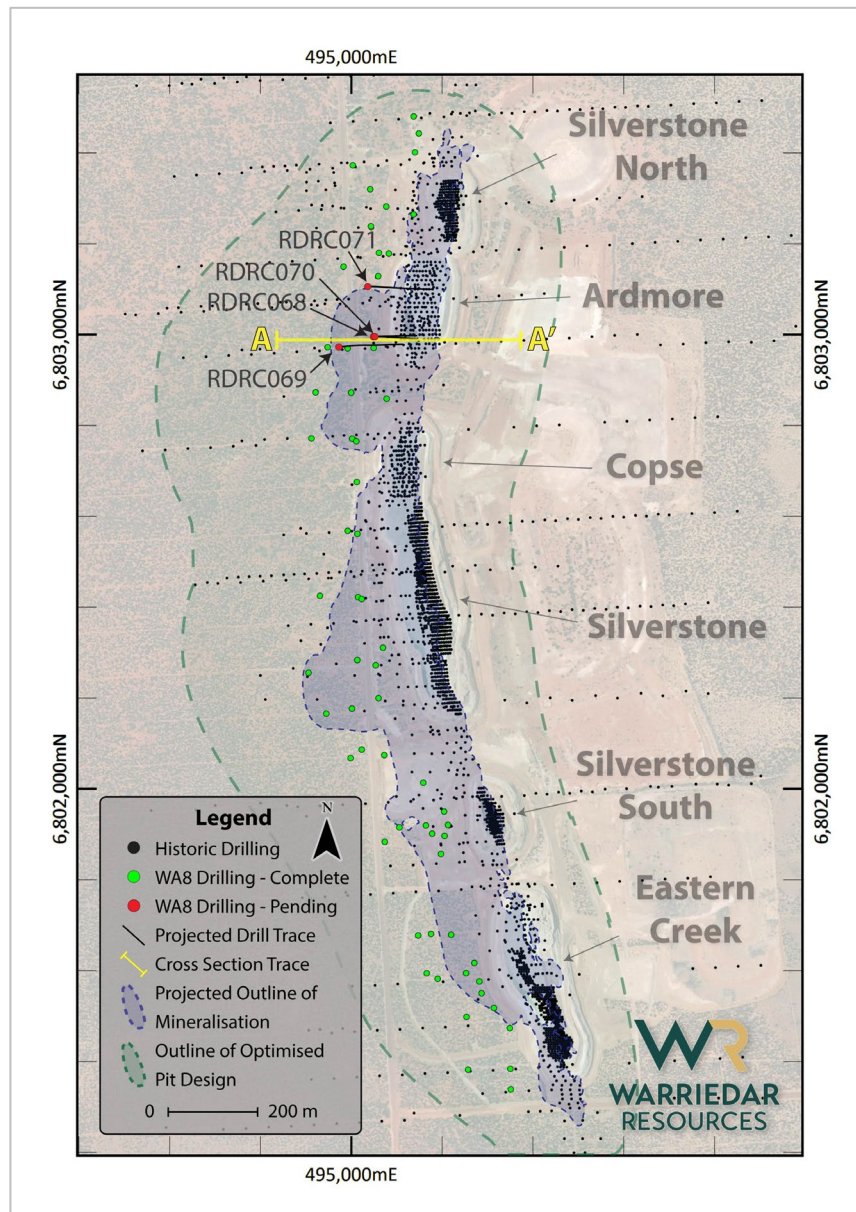


Figure 5: Plan view of Ricciardo showing the location of the cross section in Figure 4, and the location of drillhole RDR068.

Fast-tracked Ricciardo drilling

Following Warriedar’s recent capital raising, the fast-tracked Ricciardo drilling program has commenced.

The diamond rigs currently completing drilling at the Windinne Well and M1 deposits will be moved to Ricciardo later this month. A Reverse Circulation (**RC**) rig has commenced drilling pre-collars at Ricciardo. The anticipated addition of a second RC rig during July means that in approximately 5 weeks, Warriedar is targeting four rigs being in operation at Ricciardo.

This fast-tracked program is designed for further MRE growth, metallurgical studies and selective MRE upgrade (initially at the Ardmore end). The initial phase comprises approximately 105 holes for approximately 29,000m (being approx. 15,000m RC and 14,000m diamond; refer to Figure 6).

This program is planned to run in parallel with further drilling within the broader ‘Golden Corridor’, and progression of the regional program to uncover blind gold deposits along the 70km main shear at the Golden Range Project.

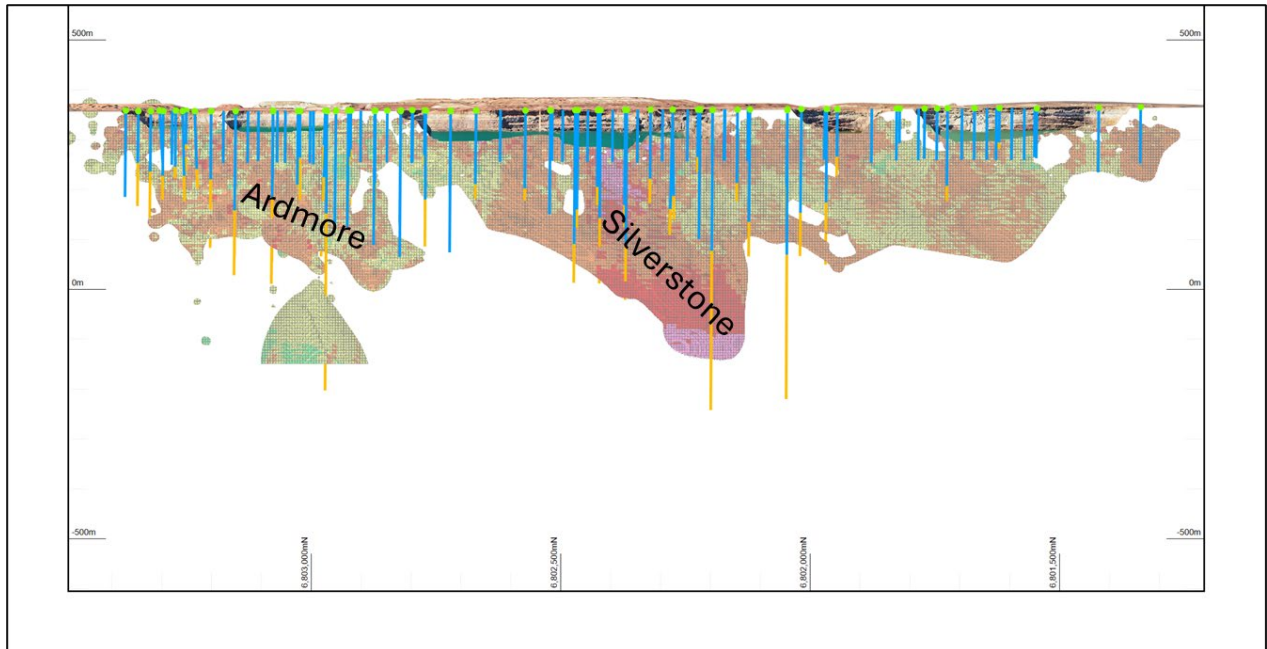


Figure 6: Stage 1 drill plan for Ricciardo. This working figure, exported from Micromine, is subject to change (all drill programs are iterative). This is a long section looking east with the blue part of the drill traces representing the planned ‘RC pre-collar’ and the orange part of the drill trace representing the diamond tail. Not all hole traces are visible (many are behind the block-model). These holes dip steeply to the east. The distance between annotations is 500m.



Figure 7: Drone photo showing recent diamond drilling at the Ardmore end of Ricciardo. View looking SE.

Engage with this announcement at the Warriedar [InvestorHub](#)

This announcement has been authorised for release by: Amanda Buckingham, Managing Director.

CONTACT:

Investors

+61 8 9481 0389

info@warriedarresources.com.au

Media

Michael Vaughan (Fivemark Partners)

+61 422 602 720

Competent Person Statement

The information in this report that relates to Exploration Result is based on information compiled by Mr Peng Sha, Sha is an employee of Warriedar and a member of the Australasian Institute of Mining and Metallurgy and has sufficient experience of relevance to the styles of mineralisation and types of deposits under consideration, and to the activities undertaken to qualify as Competent Persons as defined in the 2012 Edition of the Joint Ore Reserves Committee (JORC) Australasian Code for Reporting of Exploration Results, Mineral Resources and Ore Reserves.

Mr Sha consents to the inclusion in this report of the matters based on his information in the form and context in which it appears.

Table 1: Collar table for 2025-Q2 Ricciardo drillholes. Assays pertaining to this release are from drillhole RDRC068, bold below.

Hole ID	Hole Depth (m)	East MGA50	North MGA50	RL	Azimuth	Dip	Type	Comment
RDRC068	237.1	495049	6802995	357	91	-65	RC, Diamond Tail	Gold assays from 3.2m of core returned; assays from the remainder of the hole still pending
RDRC069	279.1	494973	6802972	357	85	-55	RC, Diamond Tail	All assay pending
RDRC070	170.3	495051	6802995	357	88	-56	RC, Diamond Tail	All assay pending
RDRC071	285.2	495036	6803105	357	90	-61	RC, Diamond Tail	All assay pending

Table 2: Assay results from a section of drillhole RDRC068-significant intercepts table of assay drill intersections using a 0.5 g/t AuEq cut-off, with a minimum width of 0.2 meters and a maximum of 2 meters of consecutive internal waste.

Please note that only core samples from 150.8m to 154m downhole (RDRC068) were fast-tracked to the lab (the remainder of the results for this hole are pending, as are the multi-element results).

Hole ID	Depth From	Depth To	Interval	Sample Type	Au grade g/t	Sb grade %
RDRC068	151	153	2	CORE	116.3	pending
<i>including</i>	152	152.2	0.2	CORE	1148.2	pending

Appendix 1: Mineral Resources

Golden Range and Fields Find Projects, Western Australia

Golden Range Mineral Resources (JORC 2012) - May 2025												
Deposit	Measured			Indicated			Inferred			Total Resources		
	kt	g/t Au	kOz Au	kt	g/t Au	kOz Au	kt	g/t Au	kOz Au	kt	g/t Au	kOz Au/AuEq
Austin	-	-	-	222	1.3	9.1	212	1.5	10.1	434	1.4	19.2
Rothschild	-	-	-	-	-	-	693	1.4	31.3	693	1.4	31.3
M1	55	1.8	3.3	131	2.5	10.4	107	4	13.7	294	2.9	27.4
Riley	-	-	-	32	3.1	3.2	81	2.4	6.3	113	2.6	9.5
Windinne Well	16	2.33	1.2	636	3.5	71	322	1.9	19.8	975	2.9	91.7
Bugeye	14	1.56	0.7	658	1.2	24.5	646	1.1	22.8	1,319	1.1	48.1
Monaco-Sprite	52	1.44	2.4	1,481	1.2	57.2	419	1.1	14.2	1,954	1.2	74
Mugs Luck-Keronima	68	2.29	5	295	1.6	15	350	1.6	18.5	713	1.7	38.6
Ricciardo Au Resources	2692	1.72	149	4793	1.5	227	12,301	1.7	660	19,786	1.6	1036
Ricciardo Sb Resources	-	-	-	4252	2.4 AuEq (0.5% Sb)	324 AuEq (21,085t Sb)	7,273	2.4 AuEq (0.5% Sb)	601 AuEq (39,169 t Sb)	12,197	2.4 AuEq (0.5% Sb)	925 AuEq (60,254t Sb)
Grand Total										30,990	2.31	2,300.8

The information in this report that relates to estimation, depletion and reporting of the Golden Range and Fields Find Mineral Resources for is based on and fairly represents information and supporting documentation compiled by Dr Bielin Shi who is a Fellow (CP) of The Australasian Institute of Mining and Metallurgy. Dr Bielin Shi is an independent consultant geologist and has sufficient experience relevant to the style of mineralisation and type of deposits under consideration and to the activity which he is undertaking to qualify as a Competent Person as defined in the 2012 Edition of the Australasian Code for Reporting of Exploration Results, Mineral Resources and Ore Reserves.

Dr. Shi consents to the inclusion in the report of the matters based on the information in the form and context in which it appears.

The information in this report (Ricciardo Project) that relates to Exploration Results and Mineral Resources is based on information compiled by Chris Grove who is a Competent Person and Member of the Australian Institute Geoscientists. Mr Grove is a full-time employee of Measured Group Pty Ltd. Mr Grove has sufficient experience that is relevant to the style of mineralisation and type of deposit under consideration and to the activity being undertaken to qualify as a Competent Person as defined in the 2012 Edition of the "Australasian Code for Reporting of Exploration Results, Mineral Resources and Ore Reserves".

Mr Grove consents to the inclusion in this report of the matters based on his information in the form and context in which it appears.

The information is extracted from the ASX Releases entitled "Major Gold Project Acquisition" created on 22nd November 2022; and; "Ricciardo Delivers Australia's Largest Open-Pit Antimony Resource" created on 5th May

2025. Both releases are available to view on www.warriedarresources.com (Under Investor Hub Thank you for reaching out. ASX Announcements). The company confirms that it is not aware of any new information or data that materially affects the information included in the original market announcements and all material assumptions and technical parameters underpinning the estimates in the relevant market announcements continue to apply and have not materially changed. The company confirms that the form and context in which the Competent Person's findings are presented have not been materially modified from the original market announcement.

Big Springs Project, Nevada

Big Springs Mineral Resources (JORC 2012) - November 2022												
Deposit	Measured			Indicated			Inferred			TOTAL		
	kt	g/t Au	koz	kt	g/t Au	koz	kt	g/t Au	koz	kt	g/t Au	koz
North Sammy	345	6.6	73.4	698	3.1	70.6	508	2.4	39.1	1,552	3.7	183.1
North Sammy Contact	-	-	-	439	2.2	30.9	977	1.4	45	1,416	1.7	75.8
South Sammy	513	3.4	55.5	4,112	2.0	260.7	1,376	1.5	64.9	6,001	2.0	381.2
Beadles Creek	-	-	-	753	2.6	63.9	2,694	1.9	164.5	3,448	2.1	228.4
Mac Ridge	-	-	-	-	-	-	1,887	1.3	81.1	1,887	1.3	81.1
Dorsey Creek	-	-	-	-	-	-	325	1.8	18.3	325	1.8	18.3
Brien's Fault	-	-	-	-	-	-	864	1.7	46.2	864	1.7	46.2
Sub-Totals	858	4.7	128.9	6,002	2.2	426.1	8,631	1.7	459.1	15,491	2.0	1,014.1

Note: Appropriate rounding applied

The information in the release that relates to the Estimation and Reporting of the Big Springs Mineral Resources has been compiled and reviewed by Ms Elizabeth Haren of Haren Consulting Pty Ltd who is an independent consultant to Warriedar Resources Ltd and is a current Member and Chartered Professional of the Australasian Institute of Mining and Metallurgy and Member of the Australian Institute of Geoscientists. Ms Haren has sufficient experience, which is relevant to the style of mineralisation and types of deposits under consideration and to the activities undertaken, to qualify as a Competent Person as defined in the 2012 Edition of the "Australasian Code of Reporting of Exploration Results, Mineral Resources and Ore Reserves (The JORC Code).

Ms Haren consents to the inclusion in this report of the matters based on his information in the form and context in which it appears.

The information is extracted from the ASX Release entitled "Big Springs M&I Resource Increases 21%" created on 15th November 2022 and is available to view on www.warriedarresources.com (Under Investor Hub) ASX Announcements). The company confirms that it is not aware of any new information or data that materially affects the information included in the original market announcement and all material assumptions and technical parameters underpinning the estimates in the relevant market announcement continue to apply and have not materially changed. The company confirms that the form and context in which the Competent Person's findings are presented have not been materially modified from the original market announcement.

Appendix 2: JORC CODE (2012) TABLE 1

Section 1 Sampling Techniques and Data (Criteria in this section apply to all succeeding sections)

Criteria	JORC Code explanation	Commentary
Sampling techniques	<ul style="list-style-type: none"> Nature and quality of sampling (e.g. cut channels, random chips, or specific specialised industry standard measurement tools appropriate to the minerals under investigation, such as down hole gamma sondes, or handheld XRF instruments, etc.). These examples should not be taken as limiting the broad meaning of sampling. Include reference to measures taken to ensure sample representivity and the appropriate calibration of any measurement tools or systems used. Aspects of the determination of mineralisation that are Material to the Public Report. In cases where 'industry standard' work has been done this would be relatively simple (e.g. 'reverse circulation drilling was used to obtain 1 m samples from which 3 kg was pulverized to produce a 30 g charge for fire assay'). In other cases more explanation may be required, such as where there is coarse gold that has inherent sampling problems. Unusual commodities or mineralisation types (e.g. submarine nodules) may warrant disclosure of detailed information. 	<ul style="list-style-type: none"> For Reverse Circulation (RC) drilling program, 1m RC drill samples were collected through a rig-mounted cone splitter designed to capture a one metre sample with optimum 2kg to 4kg sample weight. Once drilling reached fresh rock a fine spray of water was used to suppress dust and limit the loss of fines through the cyclone chimney. Compositing RC samples in lengths of 4 m was undertaken from host rocks via combining 'Spear' samples of the 1m intervals to generate a 2 kg (average) sample. Diamond Core samples were taken, generally on 1m intervals or on geological boundaries where appropriate. For 1m RC samples, field duplicates were collected at an approximate ratio of 1:50 and collected at the same time as the original sample through the chute of the cone splitter. Core duplicates, quarter core, were inserted at an approximate ratio of 1:50. Certified reference materials (CRMs) were inserted at an approximate ratio of 1:15 and blanks were inserted at an approximate ratio of 1:25. Grade range of the certified samples were selected based on grade population and economic grade ranges. For composite RC samples, field duplicates were made via combining 'Spear' samples. Duplicates, CRMs and blanks were inserted at an approximate ratio of 1:50. Samples were sent to the lab where they were pulverised to produce a 30g or 25g charge for fire assay. The samples containing possible visible gold were submitted for screen fire assay.
Drilling techniques	<ul style="list-style-type: none"> Drill type (e.g. core, reverse circulation, open-hole hammer, rotary air blast, auger, Bangka, sonic, etc.) and details (e.g. core diameter, triple or standard tube, depth of diamond tails, face-sampling bit or other type, whether core is oriented and if so, by what method, etc.). 	<ul style="list-style-type: none"> TopDrill drill rig was used for the RC holes. Hole diameter was 140 mm. Diamond drilling was also undertaken by Terra Drilling rigs (KWL 1600H) using HQ. Core was orientated using Axis Champ Ori digital core orientation tool.
Drill sample recovery	<ul style="list-style-type: none"> Method of recording and assessing core and chip sample recoveries and results assessed. Measures taken to maximize sample recovery and ensure representative nature of the samples. Whether a relationship exists between sample recovery and grade and whether sample bias may have occurred due to preferential loss/gain of fine/coarse material. 	<ul style="list-style-type: none"> For RC each metre interval, sample recovery, moisture and condition were recorded systematically. Most samples were of good quality with ground water having minimal effect on sample quality or recovery. The diamond drill core recovered is physically measured by tape measure and the length recovered is recorded for every run. There is no obvious relationship between sample recovery and grade. During the RC sample collection process, the sample sizes were visually inspected to assess drill recoveries.
Logging	<ul style="list-style-type: none"> Whether core and chip samples have been geologically and geotechnically logged to a level of detail to support appropriate Mineral Resource estimation, mining studies and metallurgical studies. Whether logging is qualitative or quantitative in nature. Core (or costean, channel, etc.) photography. The total length and percentage of the relevant intersections logged. 	<ul style="list-style-type: none"> RC chips were washed and stored in chip trays in 1 m intervals for the entire length of each hole. Chip trays were stored on site in a sealed container. RC chips and diamond core were visually inspected and logged by an onsite geologist to record lithology, alteration, mineralisation, veining, structure, sample quality etc. Logging and sampling have been carried out to industry standards to support a Mineral Resource Estimate. Drill hole logs are recorded in LogChief and uploaded into database (DataShed), and output further validated in 3D software such as Surpac and Micromine. Corrections were then re-submitted to database manager and uploaded to DataShed.

Criteria	JORC Code explanation	Commentary
Sub-sampling Techniques and sample preparation	<ul style="list-style-type: none"> • <i>If core, whether cut or sawn and whether quarter, half or all core taken.</i> • <i>If non-core, whether riffled, tube sampled, rotary split, etc. and whether sampled wet or dry.</i> • <i>For all sample types, the nature, quality and appropriateness of the sample preparation technique.</i> • <i>Quality control procedures adopted for all sub-sampling stages to maximise representivity of samples.</i> • <i>Measures taken to ensure that the sampling is representative of the in situ material collected, including for instance results for field duplicate/second-half sampling.</i> • <i>Whether sample sizes are appropriate to the grain size of the material being sampled.</i> 	<ul style="list-style-type: none"> • RC samples were split from dry 1 m bulk samples via a splitter directly from the cyclone to obtain a sample mass of 2-3kg. • Composite RC samples were generated by taking a spear sample from each 1m bag to make rough 2 kg sample. • Half Core samples were taken, generally on 1 m intervals or on geological boundaries where appropriate. • Samples including RC chips and diamond core were sorted and dried at 105 °C in client packaging or trays. • All samples weighed and recorded when sample sorting. • Pulverize 3kg to nom 85% <75um. All samples were analysed for Au using fire assay. • The samples that may contain visible gold were assayed via screen fire assay. Under the screen fire assay, 500g pulverised samples were screened, and the fine -75 micron fraction was analysed in duplicate, while the coarse fraction (+75 micron) was assayed in its entirety. • Sample preparation technique is appropriate for Golden Range projects and is standard industry practice for gold deposits.
Quality of assay data and Laboratory tests	<ul style="list-style-type: none"> • <i>The nature, quality and appropriateness of the assaying and laboratory procedures used and whether the technique is considered partial or total.</i> • <i>For geophysical tools, spectrometers, handheld XRF instruments, etc., the parameters used in determining the analysis including instrument make and model, reading times, calibrations factors applied and their derivation, etc.</i> • <i>Nature of quality control procedures adopted (e.g. standards, blanks, duplicates, external laboratory checks) and whether acceptable levels of accuracy (i.e. lack of bias) and precision have been established.</i> 	<ul style="list-style-type: none"> • Drilling samples were submitted to Jinning Testing & Inspection's Perth laboratory. Most of the samples were assayed by 30g fire assay ICP-OES finish from Jinning (FA301). The samples which may contain visible gold were assayed by screen fire assay (SF75). The multi-element assay were completed by mixed acid digest ICP-OES finish (MAD133). The high grade Sb samples (>3.5%) are reanalysed by fusion method to obtain near total digestion. • Field duplicates, core duplicates, blanks and CRMs were selected and placed into sample stream analysed using the same methods. • For 1m RC sample sequence, field duplicates were collected at a ratio of 1:50 and collected at the same time as the original sample through the cone splitter. CRMs were inserted at an approximate ratio of 1:15 and blanks were inserted at an approximate ratio of 1:25. • For composite RC samples, duplicates, CRMs and blanks were inserted at an approximate ratio of 1:50. • For diamond drilling CRMs were inserted at an approximate ratio of 1:15 and blanks were inserted at an approximate ratio of 1:25. Core duplicates were applied at a ratio of 1:50 • No portable XRF analysis result has been used in this release.
Verification of sampling and assaying	<ul style="list-style-type: none"> • <i>The verification of significant intersections by either independent or alternative company personnel.</i> • <i>The use of twinned holes.</i> • <i>Documentation of primary data, data entry procedures, data verification, data storage (physical and electronic) protocols.</i> • <i>Discuss any adjustment to assay data.</i> 	<ul style="list-style-type: none"> • Logging and sampling were recorded on digital logging sheet and digital sample sheet. Information was imported into DataShed database after data validation. File validation was also completed by geologist on the rig. Dashed was also applied for data verification and administration. • There were no twin holes drilled during the RC/diamond program. • All the sample intervals were visually verified using high quality photography, and significant intersections are verified by company personnel • Assay results received were plotted on section and were verified against neighbouring holes. QAQC data were monitored on a hole-by-hole basis. Any failure in company QAQC protocols resulted in follow up with the lab and occasional repeat of assay as necessary. • The performance of company standards and blanks were reviewed for each batch of assay results, immediately after results were reported, and any QC fails were investigated and where necessary re-assays were requested, or re-sampling was performed.

Criteria	JORC Code explanation	Commentary
		<ul style="list-style-type: none"> Any failure in company QAQC protocols resulted in follow up with the lab and occasional repeat of assay as necessary.
Location of data points	<ul style="list-style-type: none"> Accuracy and quality of surveys used to locate drill holes (collar and down-hole surveys), trenches, mine workings and other locations used in Mineral Resource estimation. Specification of the grid system used. Quality and adequacy of topographic control. 	<ul style="list-style-type: none"> Hole collars were picked up by handheld GPS and will be picked up by a licenced surveyor using DGPS equipment in the future. All location data are captured in the MGA projection coordinates on GDA94 geodetic datum. During drilling most holes underwent gyroscopic down hole surveys on 30m increments. Upon completion of the hole a continuous gyroscopic survey with readings taken automatically at 10m increments inbound and outbound. Each survey was carefully checked to be in bounds of acceptable tolerance.
Data spacing and distribution	<ul style="list-style-type: none"> Data spacing for reporting of Exploration Results. Whether the data spacing and distribution is sufficient to establish the degree of geological and grade continuity appropriate for the Mineral Resource and Ore Reserve estimation procedure(s) and classifications applied. Whether sample compositing has been applied. 	<ul style="list-style-type: none"> At Ricciardo exploration drilling has been drilled on a grid pattern. Spacing is considered appropriate for this style of the mineralisation and stage of the exploration. Holes spacing at Ricciardo was sufficient for resource estimation. RC Samples have been composited to 4m lengths outside proposed target zones
Orientation of data in relation to geological structure	<ul style="list-style-type: none"> Whether the orientation of sampling achieves unbiased sampling of possible structures and the extent to which this is known, considering the deposit type. If the relationship between the drilling orientation and the orientation of key mineralised structures is considered to have introduced a sampling bias, this should be assessed and reported if material. 	<ul style="list-style-type: none"> WA8 and historical drilling are mainly orientated to perpendicular are main structural trend of the area; however, there are multiple mineralisation events and there is insufficient data to confirm the geological model.
Sample security	<ul style="list-style-type: none"> The measures taken to ensure sample security. 	<ul style="list-style-type: none"> Calico sample bags are tied, grouped by sample ID placed into polyweave sacks and cable tied. These sacks were then appropriately grouped, placed within larger in labelled bulka bags for ease of transport by company personnel or third-party transport contractor. Each dispatch was itemised and emailed to the laboratory for reconciliation upon arrival.
Audits or reviews	<ul style="list-style-type: none"> The results of any audits or reviews of sampling techniques and data. 	<ul style="list-style-type: none"> The competent person for exploration results has visited the project where sampling has taken place and has reviewed and confirmed the sampling procedures.

Section 2 Reporting of Exploration Results (Criteria listed in the preceding section also apply to this section.)

Criteria	JORC Code explanation	Commentary
Mineral tenement and land tenure status	<ul style="list-style-type: none"> Type, reference name/number, location and ownership including agreements or material issues with third parties such as joint ventures, partnerships, overriding royalties, native title interests, historical sites, wilderness or national park and environmental settings. The security of the tenure held at the time of reporting along with any known impediments to obtaining a licence to operate in the area. 	<ul style="list-style-type: none"> There are 63 tenements associated with both Golden Dragon and Fields Find. Among them, 19 are mining leases, 26 are exploration licenses and 2 are in prospecting licenses. The rest of the tenements are G and L licenses. Third party rights include: 1) Gindalbie iron ore rights; 2) Mt Gibson Iron ore right for the Shine project; 3) Messenger's Patch JV right on M 59/357 and E 59/852; 4) Mt Gibson's iron ore and non-metalliferous dimension stone right on Fields Find; 5) GoldEX Royalty to Anketell Pty Ltd for 0.75% of gold and other metals production from M 59/379 and M 59/380; 6) 2% NSR royalty on products produced from Fields Find tenements to Mt Gibson; 7) Royalty of A\$5 per oz of gold produced payable to Mr Gary Mason, limited to 50Koz produced from P 59/1343, which covers part of E 59/1268.

Criteria	JORC Code explanation	Commentary
		<ul style="list-style-type: none"> The Ricciardo resource is located on the following Mining Leases; M 59/421, M 59/458 Minjar royalty for A\$ 20 per oz of gold production from the project subject to a minimum received gold price of A\$2,000 per oz with a cap of A\$18 million. <p><u>Native Title and Heritage</u></p> <ul style="list-style-type: none"> Mining leases M59/421-I and M59/458-I (Mining Leases) are within the Widi Mob native title claim area. The Widi Mob claim was combined with the claims of three other groups (Southern Yamatji, Hutt River and Mullewa Wadjari) over areas to the west to form the Yamatji Nation native title claim. The native title claims of these groups was resolved in 2020 by the entry of those groups and the State into the Yamatji Nation Indigenous Land Use Agreement (ILUA). The ILUA recognised non-exclusive native title rights and interests in discrete, culturally significant parcels of land (<1% of the total claim area) and the creation of managed reserves and conservation areas jointly managed with DCBA. The Mining Leases are not within these areas. Under the ILUA, the State agreed to pay compensation to the claimant groups for future acts and for the surrender of the balance of native title rights in the claim areas. This resolves native title claims over the areas of the Mining Leases without the need for further agreements between the Company and claimant groups. A search of the Aboriginal Heritage Inquiry System shows that there are no registered sites recorded in the areas of the Mining Leases. The area of the Mining Leases has been the subject of extensive heritage surveys in the past. Currently all the tenements are in good standing. There are no known impediments to obtaining licences to operate in all areas.
Exploration done by other parties	<ul style="list-style-type: none"> <i>Acknowledgment and appraisal of exploration by other parties.</i> 	<ul style="list-style-type: none"> Gold exploration at the region commenced in the 1980s. Normandy Exploration commenced the systematic exploration in late 1980s and 1990s. Project were acquired by Gindalbie Gold N.L. in December 1999. Golden Stallion Resources Pty Ltd acquired the whole project in March 2009. Shandong Tianye purchased 51% of Minjar (the operating company) in July 2009. Minjar became the wholly owned subsidiary of Tianye in 2010. Over 30,000 drill holes are in the database and completed by multiple companies using a combination technic of Reserve Circulation (RC), diamond drilling (DD), airecore (AC), Auger and RAB. Most of the drill holes were completed during the period of 2001-2004 and 2013-2018 by Gindalbie and Minjar respectively. Anova Metals Limited acquired Golden Range project and Fields Find project prior to a corporate name change 20 February 2023, to Warriedar Resources Limited (ASX WA8).
Geology	<ul style="list-style-type: none"> <i>Deposit type, geological setting and style of mineralisation.</i> 	<ul style="list-style-type: none"> In the Golden Range area, gold mineralisation is dominantly controlled by structures and lithologies. North trending shear zones and secondary structures are interpreted to be responsible for the hydrothermal activity that produced many of the region's gold deposits. Two major shear structures have been identified, the Mougooderra Shear Zone and the Chulaar Shear Zone; both striking approximately north and controlling the occurrence of gold deposits. Host lithology units for gold mineralisation are predominantly the intensely altered mafic to ultramafic units, BIF, and dolerite intrusions. Main mechanism for mineralisation is believed to be associated with: 1) Shear zones as a regional control

Criteria	JORC Code explanation	Commentary
		for fluid; 2) dolerite intrusions to be reacted and mineralised with auriferous fluids; 3) BIF as a rheological and chemical control; 4) porphyry intrusions associated with secondary or tertiary brittle structures to host mineralisation.
Drill hole Information	<ul style="list-style-type: none"> A summary of all information material to the understanding of the exploration results including a tabulation of the following information for all Material drill holes: <ul style="list-style-type: none"> easting and northing of the drill hole collar elevation or RL (Reduced Level – elevation above sea level in metres) of the drill hole collar dip and azimuth of the hole down hole length and interception depth hole length. If the exclusion of this information is justified on the basis that the information is not Material and this exclusion does not detract from the understanding of the report, the Competent Person should clearly explain why this is the case. 	<ul style="list-style-type: none"> Table 1 and Table 2 of this release provides details of drill hole coordinates, orientations, length for all drill holes, and significant intercepts that has returned from the laboratory.
Data aggregation methods	<ul style="list-style-type: none"> In reporting Exploration Results, weighting averaging techniques, maximum and/or minimum grade truncations (eg cutting of high grades) and cut-off grades are usually Material and should be stated. Where aggregate intercepts incorporate short lengths of high grade results and longer lengths of low grade results, the procedure used for such aggregation should be stated and some typical examples of such aggregations should be shown in detail. The assumptions used for any reporting of metal equivalent values should be clearly stated. 	<ul style="list-style-type: none"> Reported gold intercepts include a minimum of 0.5g/t Au value over a minimum length of 0.2 m with a maximum 2 m length of consecutive interval waste. The use of 0.5 g/t Au equivalent cut-off is appropriate given to the potential open cut mining method at Ricciardo. AuEq is not applied in the release, as all multi-element assays from recent Ricciardo drilling are still pending.
Relationship between mineralisation widths and intercept lengths	<ul style="list-style-type: none"> These relationships are particularly important in the reporting of Exploration Results. If the geometry of the mineralisation with respect to the drill hole angle is known, its nature should be reported. If it is not known and only the down hole lengths are reported, there should be a clear statement to this effect (eg 'down hole length, true width not known'). 	<ul style="list-style-type: none"> Gold mineralisation at Ricciardo and Austin dips about 70 degrees to west. Drill holes in this release are orientated between -55 to -65. The majority of the historical drill holes at Ricciardo were drilled as inclined holes with dipping angles close to -60 degree from multiple orientations; most of the drill holes are toward east. This is considered to be appropriate for the interpreted dip of the major mineralised structure and intrusions and creating minimal sampling bias.
Diagrams	<ul style="list-style-type: none"> Appropriate maps and sections (with scales) and tabulations of intercepts should be included for any significant discovery being reported These should include, but not be limited to a plan view of drill hole collar locations and appropriate sectional views. 	<ul style="list-style-type: none"> Appropriate maps are included in the announcement
Balanced reporting	<ul style="list-style-type: none"> Where comprehensive reporting of all Exploration Results is not practicable, representative reporting of both low and high grades and/or widths should be practiced to avoid misleading reporting of Exploration Results. 	<ul style="list-style-type: none"> The accompanying document is considered to be a balanced report with a suitable cautionary note.
Other substantive exploration data	<ul style="list-style-type: none"> Other exploration data, if meaningful and material, should be reported including (but not limited to): geological observations; geophysical survey results; geochemical survey results; bulk samples – size and method of treatment; metallurgical test results; bulk density, groundwater, geotechnical and rock characteristics; potential deleterious or contaminating substances. 	<ul style="list-style-type: none"> None reported.
Further work	<ul style="list-style-type: none"> The nature and scale of planned 	<ul style="list-style-type: none"> Further work includes: (1) Fururther RC and diamond core drilling at

Criteria	JORC Code explanation	Commentary
	<p><i>further work (eg tests for lateral extensions or depth extensions or large-scale step-out drilling).</i></p> <ul style="list-style-type: none"> <i>Diagrams clearly highlighting the areas of possible extensions, including the main geological interpretations and future drilling areas, provided this information is not commercially sensitive.</i> 	<p>Ricciardo for further MRE growth, metallurgical studies and selective MRE upgrade. (2) RC and diamond core drilling programs to extend the identified mineralisation along strike and toward depth of the deposits sitting on Mougooderra Shear and other paralleled shear structure.</p>