

## First Drilling Campaign at Thomson Complete

### Drilling intersects wide zones of quartz-sulphide veins

#### Successful Drill Test of First Targets

- Legacy Minerals has completed the drilling of the F4 and Cut-B anomalies that lie within the Thomson Project located in far north-west NSW.
- These drill targets were defined by discrete, coincident zones of elevated magnetic and gravity data interpreted as having potential for intrusion-related gold and copper (IRG-Cu) style mineralisation.
- Drill core processing is underway with assays expected within 6-8 weeks.

#### Drilling Observations

- Quartz and quartz-pyrrhotite-pyrite +/- sphalerite-chalcopyrite veins were intercepted at both targets and are interpreted to be the cause of the magnetic and gravity anomalies.
- Drilling reached top of basement at 84.2m (CBDD004) and 88.8m (F4DD001) and continued in a variably hornfelsed and silica-carbonate altered meta-siltstone dominated package with thin, frequent to infrequent quartz veins to end of hole (600.2m – CBDD004, 460.3m – F4DD001).

#### Historical Drilling Results

- 2011 diamond drilling (CUTBD02) at the Cut-B anomaly encountered 300m of alteration and elevated gold-copper anomalism. Better results included:
  - **1m at 6.73g/t Au** from 370m, **1m at 497g/t Ag, 0.13% Nb** from 392m<sup>i</sup> and,
  - **0.7m at 0.5% Cu, 112g/t Ag, 4.2% Zn and 0.4% Sn** from 411m<sup>ii</sup>.

#### Future Drilling Planned – Cut A Anomaly

- Further government drilling approvals are underway to test adjacent historical ‘near miss’ at Cut-A.
- 2011 drill testing of the nearby Cut-A<sup>ii</sup> anomaly returned broad mineralised intervals, including:
  - **377m at 0.1g/t Au** (no cut-off) from 225m to 602m including,
  - **41m at 0.4g/t Au** (no cut-off) from 420m.

#### Discovery Opportunity

The Project shares characteristics with major IRG-Cu districts, such as the Paterson Province WA, host to major deposits including Winu (2.8Mt Cu, 8Moz Au, 51Moz Ag)<sup>1,iii</sup> and Havieron (7Moz Au, 0.3Mt Cu)<sup>iv</sup>.



**Figure 1.** F4DD004: laminated quartz-pyrrhotite vein at 197m. **Figure 2.** CBDD004: quartz-pyrrhotite breccia at 154.5m  
(See Table 2 for details on the visual estimates of mineralisation)

**Cautionary Note Visual Estimates of Mineralisation:** ‘Visual estimates of mineral abundance should never be considered a proxy or substitute for laboratory analyses where concentrations or grades are the factor of principal economic interest. Visual estimates also potentially provide no information regarding impurities or deleterious physical properties relevant to valuations.’

1. See Endnotes on Page 22 for references

**Management comment** Legacy Minerals CEO & Managing Director, Christopher Byrne said:

*“Legacy Minerals is pleased to have achieved our objectives with the latest drilling at the Thomson Project, which intercepted wide zones of quartz-sulphide mineralisation at both target areas. At the Thomson Project, we benefit from a district-scale, first-mover advantage, exploring a new frontier for mineral discovery. This drilling campaign has successfully defined new mineralisation in the first-ever tests of these large geophysical anomalies, which have the potential to represent the geophysical expression of significant gold-copper deposits.*

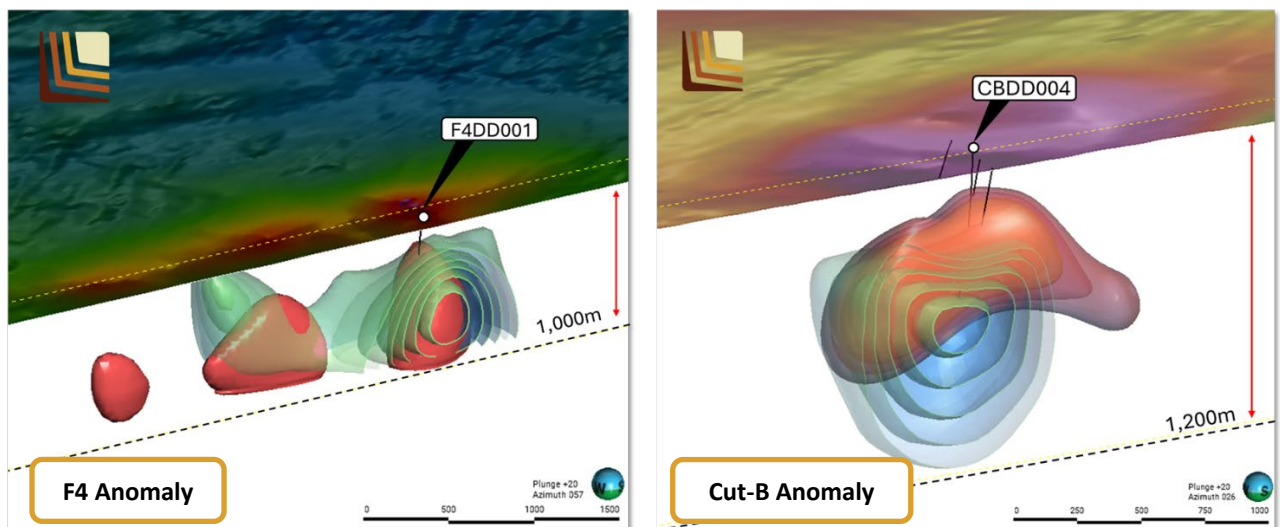
*Diamond drill core observations from both targets indicate that the magnetic anomalies are caused by an increased abundance of magnetic sulphide mineralisation (pyrrhotite) associated with quartz veining. Pyrrhotite is commonly associated with gold mineralisation in intrusion-related gold and copper systems, including at the nearby and historically drill-tested Cut-A Anomaly.*

*These observations validate the team’s targeting criteria and geological interpretation of the magnetic data, further enhancing the prospectivity of multiple untested targets across the Thomson Project.*

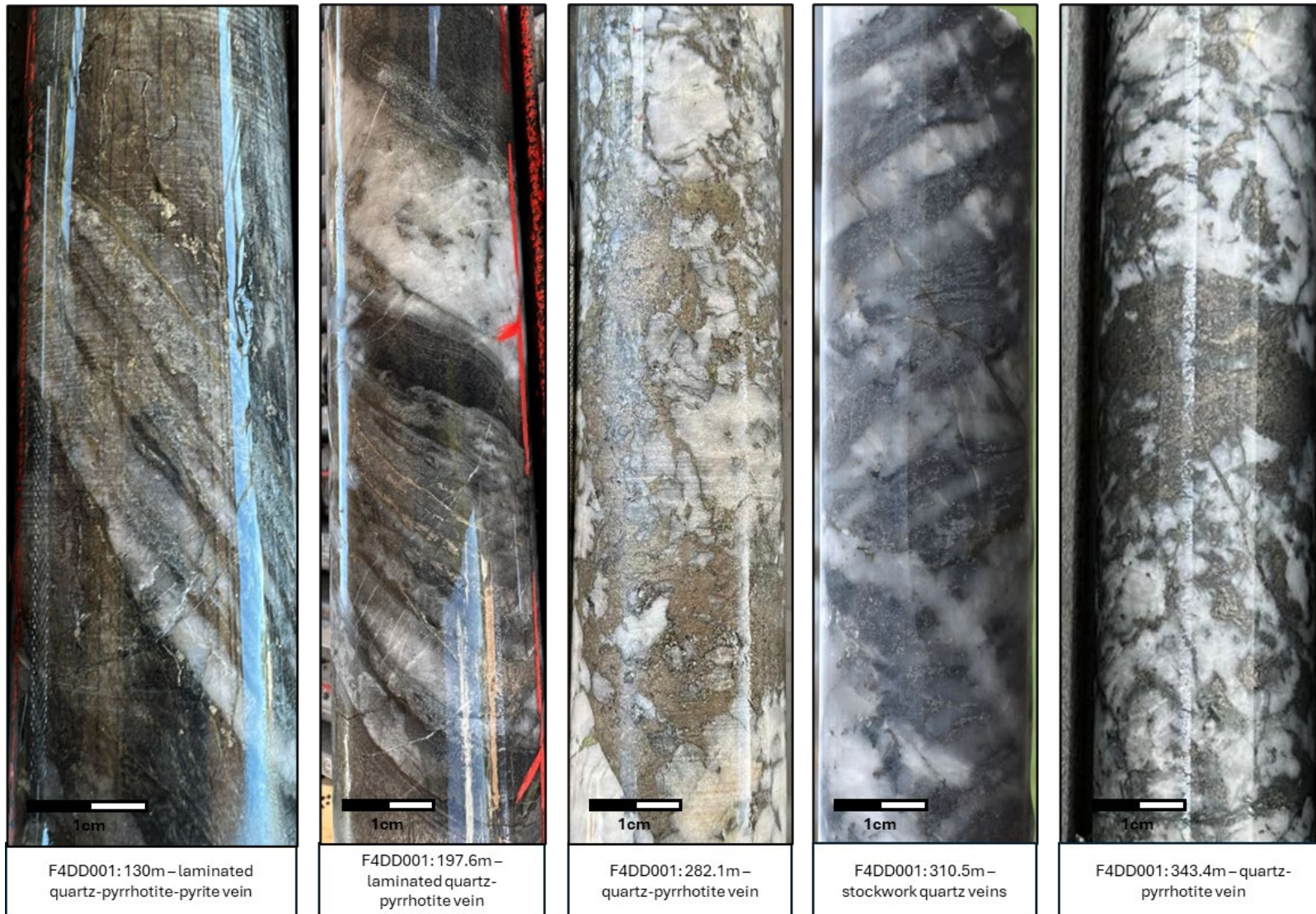
*We now await assay results, expected within six weeks. Funding and government approval are already in place to drill follow-up holes at both the Cut-B and F4 targets, with additional approvals underway to test further high-priority anomalies across the Project Area.”*

### F4 and Cut-B Anomaly Drilling

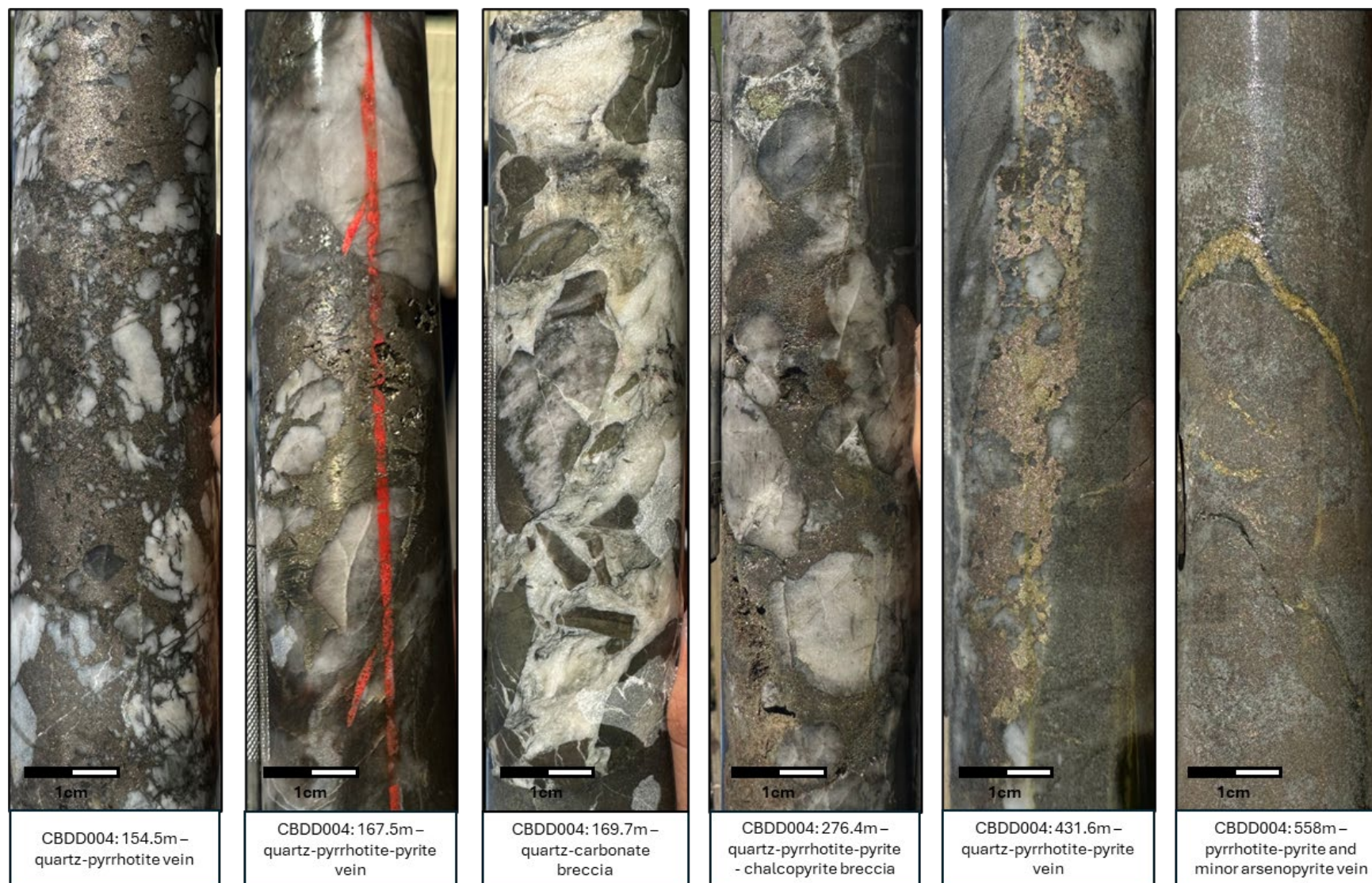
The F4 and Cut-B targets are defined by discrete, coincident zones of elevated magnetic and gravity responses, similar to those observed at the Cut-A anomaly, and are the first targets of over a dozen large, discrete geophysical targets that warrant testing. These features may represent IRG-Cu mineralisation. The F4 represents a geophysical anomaly never before drill tested while the Cut-B has shown encouraging results from first pass historical drilling.



**Figure 3.** Oblique views of the F4 anomaly (Left image: 6613500mN, MGA94 z54) and Cut-B anomaly (Right image: 249750mE, MGA94 z55). 3D magnetic inversion model anomaly shells (Red >0.006 SI) and gravity elevated modelled density shells (green >2.72) with surface showing magnetic RTP and completed drill holes<sup>1</sup>.



**Figure 4.** Examples of veins textures intercepted and mineralisation in the F4DD004 drill hole. See Disclaimer around visual estimates on Page 1 and Table 2 for details on the visual estimates of mineralisation.



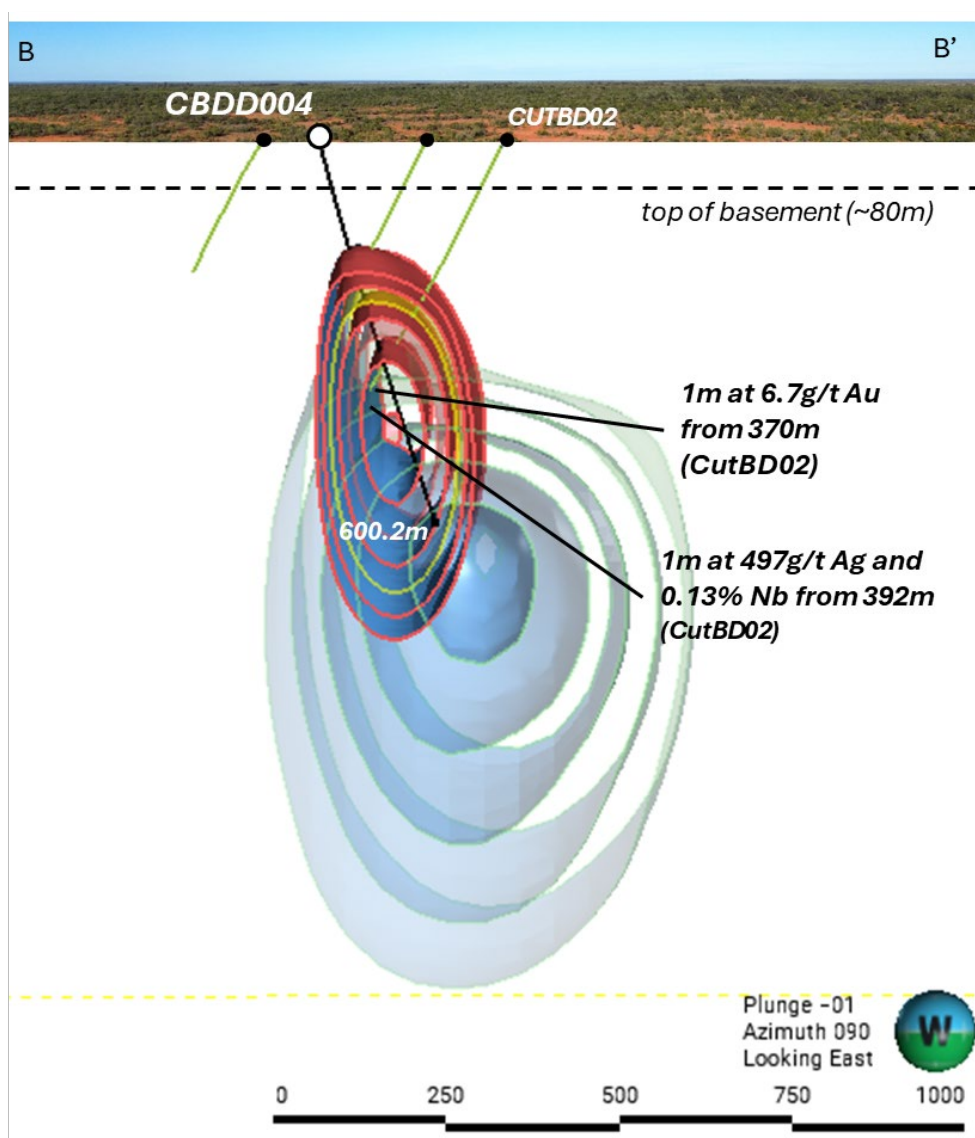
**Figure 5.** Examples of veins textures intercepted and mineralisation in the CBDD004 drill hole. See Disclaimer around visual estimates on Page 1 and Table 2 for details on the visual estimates of mineralisation.

## Cut-B Anomaly

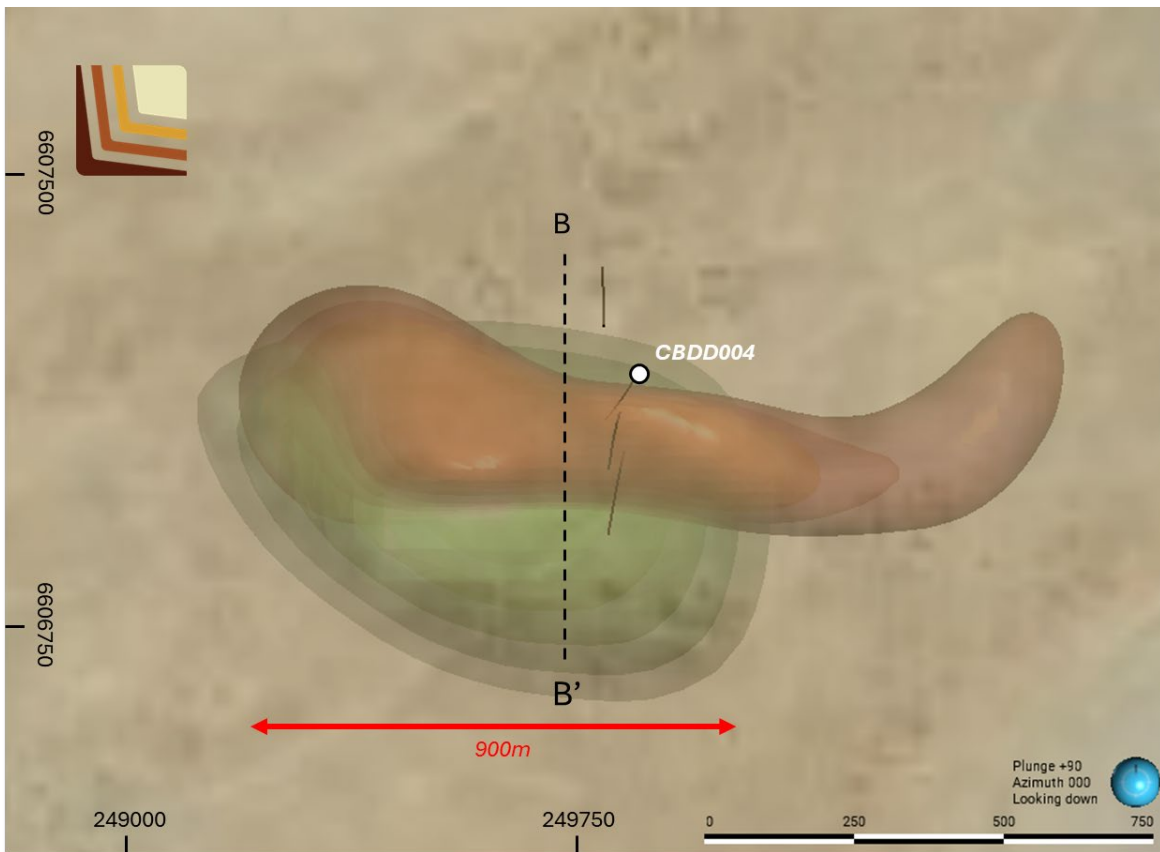
The Cut-B anomaly exhibits a coincident elevated gravity and magnetic data which indicates a close spatial relationship between magnetic material and dense material. This target strikes east-to-west over approximately 900m. Drilling successfully tested the modelled magnetic and gravity target with observations and magnetic susceptibility measurements indicating that the magnetic feature has been caused by hydrothermal pyrrhotite-bearing quartz veins.

Previous drilling at the CutBD02 Anomaly intersected approximately 300m of silica-albite +/- tourmaline-biotite alteration, delivering several high-grade intervals with highlight assays including<sup>1</sup>:

- 1m at 6.73g/t Au from 370m
- 1m at 497g/t Ag, 0.13% Nb from 392m
- 0.7m at 112g/t Ag, 0.5% Cu, 4.2% Zn and 0.4%Sn from 411m<sup>v</sup>.



**Figure 6.** Cut-B anomaly cross section showing 3D magnetic inversion model anomaly shells (Red >0.006 SI) and gravity anomaly modelled density shells (green >2.78) with historic drilling and surface showing magnetic RTP (section 249750mE, MGA94 z55)<sup>i</sup>. CBDD004 assays pending.



**Figure 7.** Cut-B plan view showing 3D magnetic inversion model anomaly shells (Red >0.006 SI) and gravity anomaly modelled density shells (green >2.78) with drilling and aerial image<sup>1</sup>. CBDD004 assays pending.

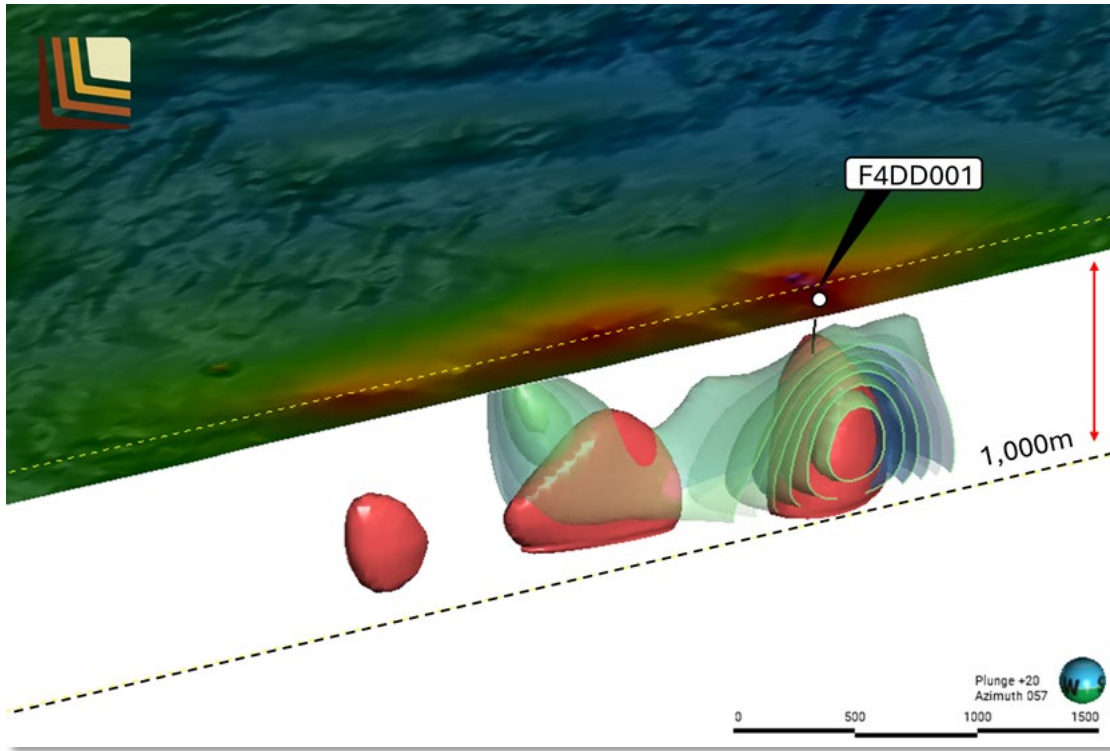
Variable silica-albite-biotite altered metasediments were observed with strong to weak alteration intensity associated with quartz veins and veinlets from 84m to end of hole in drill hole CBDD004. Minor pyrrhotite and pyrite bearing quartz veins with rarer base metal and arsenopyrite-bearing quartz veins were logged throughout the drill hole with zones of increased vein widths. No correlation between veining, alteration and assay results has yet been recognised based on assay results from CutBD02.

Historical drill hole CutBD02 delivered several significant intervals highlighting gold, silver and niobium endowment. Better results included:

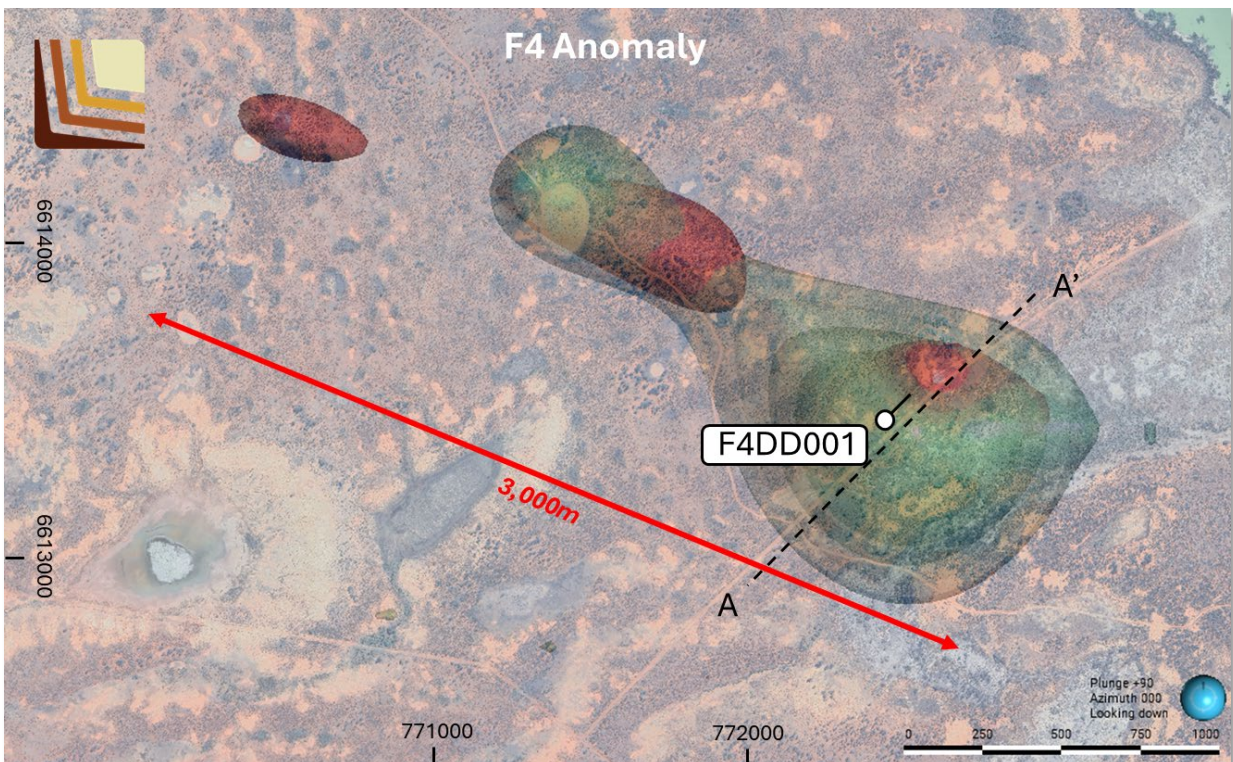
- 6m at 0.2g/t Au from 277m
- 0.5m at 0.4g/t Au, 38.3g/t Ag, 0.42% Bi and 0.2% W from 357.5m
- 1m at 6.73g/t Au from 370m
- 1m at 497g/t Ag, 0.13% Nb and 854ppm Mo from 392m
- 0.7m at 112g/t Ag, 0.5% Cu, 4.2% Zn and 0.4%Sn from 411m

#### F4 Anomaly

The F4 anomaly had never before been tested by drilling with Legacy Minerals the first to test this target. Drilling successfully tested the modelled magnetic and gravity target with observations and magnetic susceptibility measurements indicating that the magnetic feature has been caused by hydrothermal pyrrhotite-bearing quartz veins.

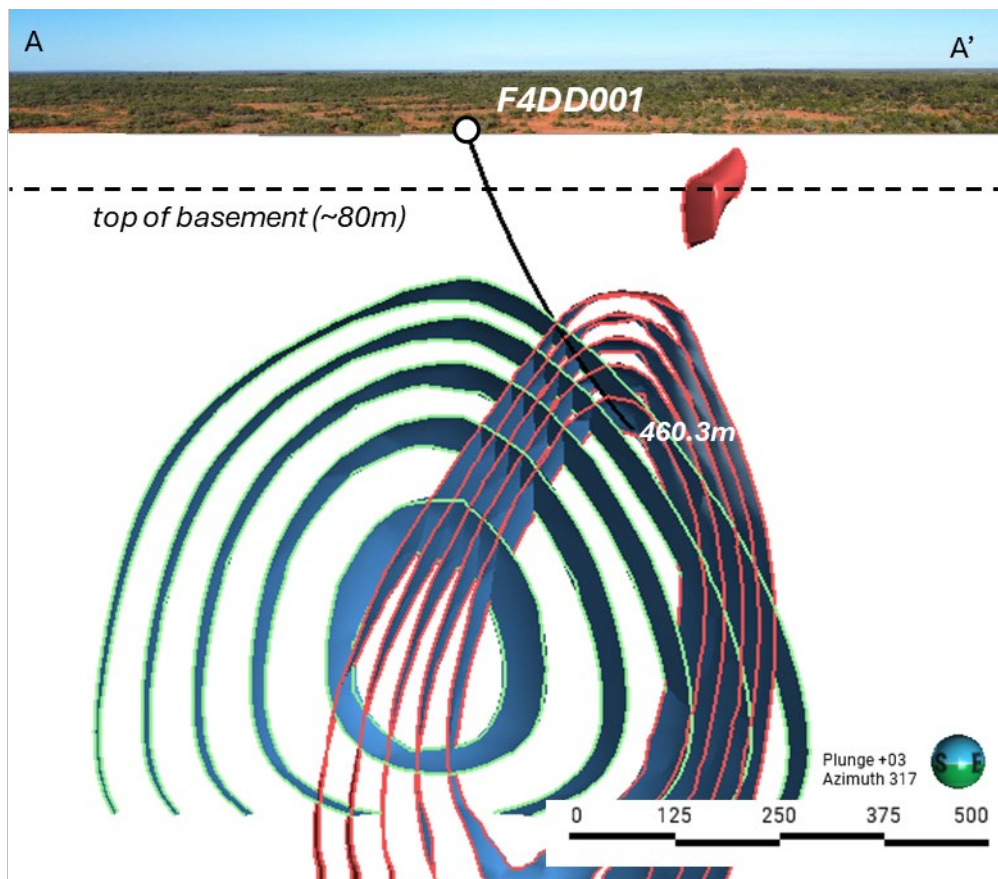


**Figure 8.** F4 anomaly cross section showing completed drill hole 3D magnetic inversion model anomaly shells (Red >0.006 SI) and gravity anomaly modelled density shells (green >2.72) surface showing magnetic (section 6613500mE, MGA94 z540)<sup>1</sup>.



**Figure 9.** Plan view of the F4 magnetic anomaly shells (Red >0.006 SI) and gravity anomaly modelled density shells (green >2.72) with completed drillhole over aerial image<sup>1</sup>.

For personal use only



**Figure 10.** Sectional view of the F4 magnetic anomaly shells (Red >0.006 SI) and gravity anomaly modelled density shells (green >2.72) with completed drill hole<sup>i</sup>. F4DD001 assays pending.

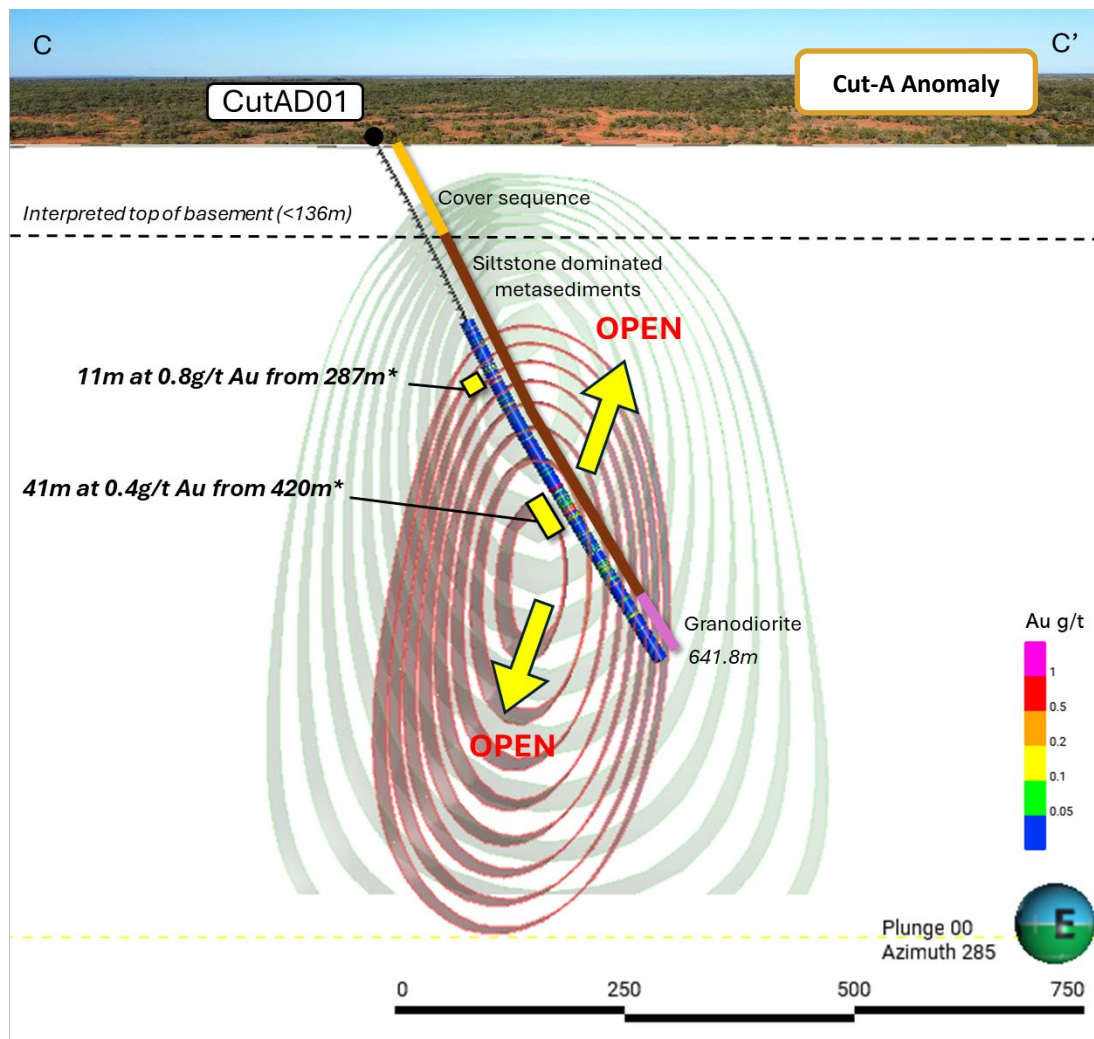
### Future Drill Target – Cut-A Anomaly

#### The Cut-A Anomaly<sup>i</sup>

Recently reported intercepts from new assays at the anomaly include:

- 377m at 0.1g/t Au (no cut-off) from 225m to 602m including,
  - **11m at 0.8g/t Au from 287m** (no cut-off) including,
    - 3m at 1.6g/t Au from 283m, and
    - 1m at 3.7g/t Au from 293m
  - **41m at 0.4g/t Au from 420m** (no cut-off) including,
    - 8m at 0.5g/t Au from 420m, and
    - 15m at 0.7g/t Au from 446m

The Cut-A anomaly exhibits a coincident zone of elevated magnetic and gravity response that extends over a strike length of approximately 1,000m, in an east-west direction. Previous explorers completed a single line of induced polarisation dipole-dipole (DDIP) over the highest magnetic feature and identified a zone of increased chargeability coincident with the elevated magnetic data. This was followed up by a single 641.8m drill-hole. Drilling reached top of basement at 136m and continued in approximately 480m of strong to moderate silica-carbonate altered meta-siltstone dominated package with thin, frequent quartz veins. Quartz veins commonly contain pyrite and pyrrhotite-bearing. Granodiorite was intercepted from 597m to the end-of-hole (at 641.8m)<sup>ie</sup>.



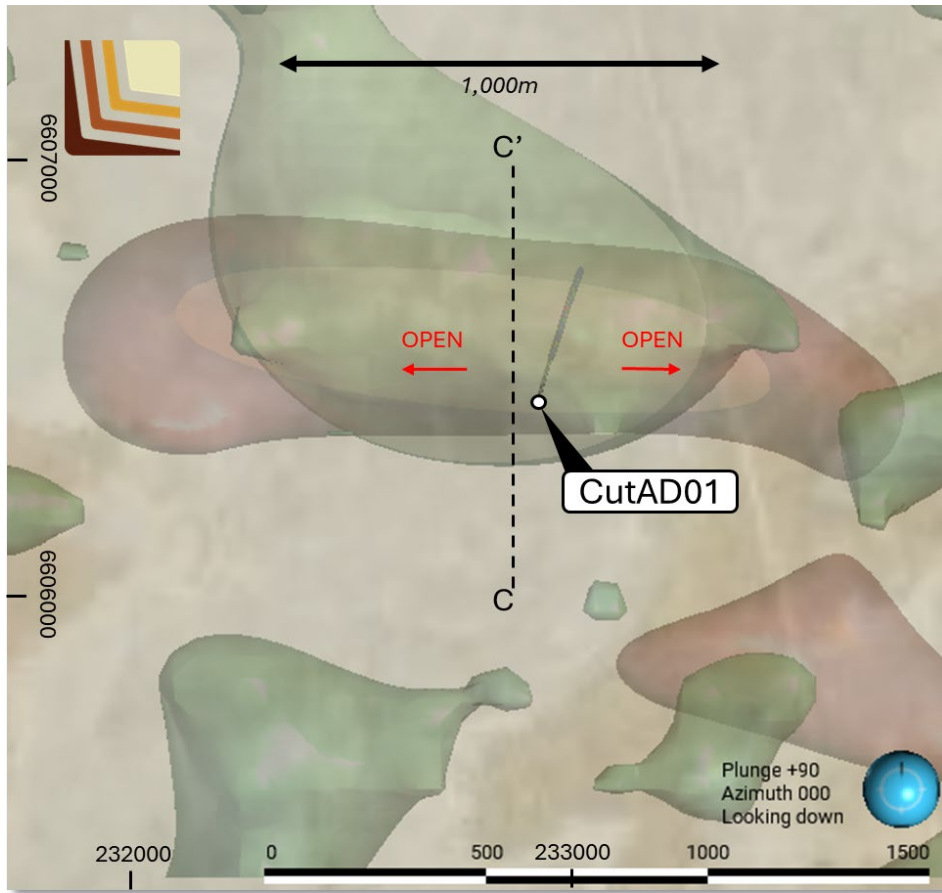
**Figure 11.** Cut-A anomaly cross section showing 3D magnetic inversion model anomaly shells (Red  $>0.0035$  SI) and gravity anomaly modelled density shells (green  $>2.70$ ) with historic drilling (Section 232946mE, MGA94 z55)<sup>i</sup>. \*No cut-off grade applied.

Assay results from drill core sampling delivered a broad anomalous uncut interval of 377m at 0.1g/t Au (no cut-off) from 225m. Pathfinder elements are consistent with a reduced intrusion related gold model where gold correlates with Bi and Te in quartz veins and As, Sn and W are variably elevated. The target is interpreted to be open in all directions.

Better results within this broad zone include:

- 7m at 1.2g/t Au and 658ppm Bi from 287m (uncut) including:
  - 3m at 1.6g/t Au and 935ppm Bi from 283m; and
  - 1m at 3.7g/t Au and 1670ppm Bi from 293m.
- 41.95m at 0.4g/t Au from 420m (uncut) including:
  - 8m at 0.5g/t Au from 420m including:
    - 4m at 1g/t Au, 5.5g/t Ag and 940ppm Bi from 420m.
  - 24.95m at 0.4g/t Au, 7.9g/t Ag from 437m including:
    - 7.95m at 0.49g/t Au and 7.1g/t Ag from 446m including:

- 5.45m at 1.1g/t Au and 6.7g/t Ag from 448.55m.

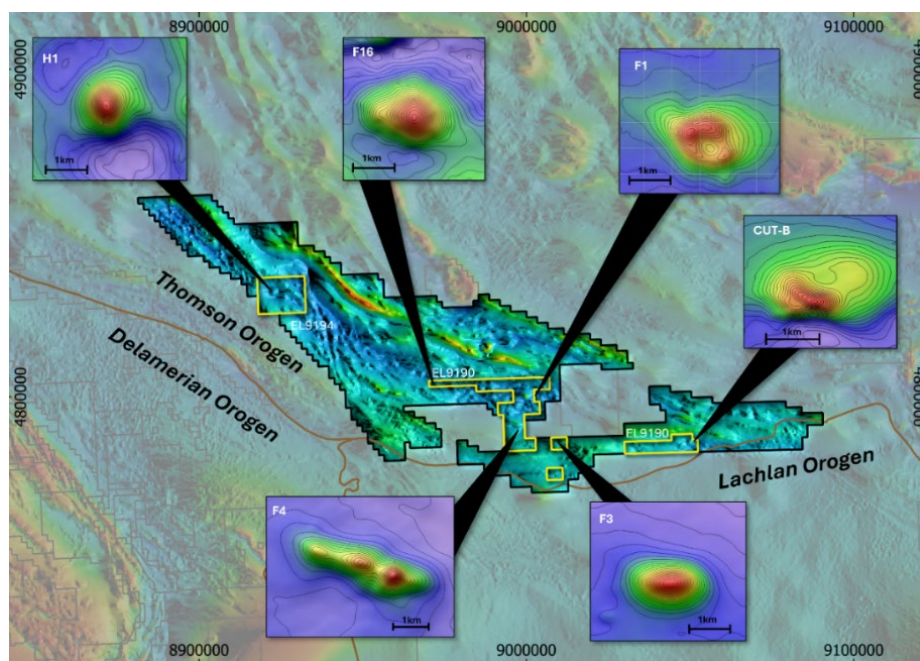


**Figure 12.** Plan view of the Cut-A magnetic anomaly shells (Red >0.001 SI) and gravity anomaly modelled density shells (green >2.69) over aerial image<sup>1</sup>.

For personal use only

## Thomson Project – Intrusion-Related Gold and Copper

The Thomson Project is located west of Bourke and covers 5,500km<sup>2</sup> of tenure under granted exploration licences, securing a belt-scale exploration opportunity.



**Figure 13.** Overview showing regional RTP magnetics and examples of “bullseye” magnetic targets (inset).

The Thomson Project is located near the southern margin of the Thomson Orogen nearby the interpreted contact with the Lachlan Fold Belt and the Delamerian Orogen. The Thomson Orogen covers a large area of Queensland and north-western New South Wales, mostly under cover of the Mesozoic Eromanga Basin.

The dominant basement rocks are interpreted to consist of Cambrian to Ordovician volcanics, metamorphosed turbidite, siltstone, and slate that are intruded by Silurian to Devonian felsic and mafic igneous rocks. This interpretation is supported by:

- Several deep stratigraphic drill holes, such as Tongo 1, Laurelvale 1, completed by the NSW Geological Survey (GSNSW)<sup>vi</sup>.
- Historic drill holes completed by previous exploration companies.
- The incorporation and interpretation of regional geophysical data (aeromagnetic, gravity and seismic) conducted by the GSNSW with geology logged in drill holes.

The Thomson Project is covered by younger sediments that ranges up to 280m thick. These sediments are part of the Eromanga and the Surat Basin cover sequences.

Historically these sedimentary cover rocks have partly deterred previous exploration companies and has limited the recognition of the Thomson Orogen’s mineral potential. Importantly, historical work indicates that this cover sequence is geophysically transparent, with a number of the key geophysical targeting methods such as magnetics and gravity, providing highly useful and important data sets.

The GSNSW has suggested that the basement rocks within the Thomson Orogen could hold similar mineral potential to the adjoining belts, including the base metal and gold endowment of the Lachlan Orogen to the south, which is over 80Moz gold and 13Mt copper<sup>vii</sup>. A series of major, belt-scale faults are interpreted from regional magnetic and gravity data, which may have acted as major fluid flow conduits during both early extensions and later deformation of the belt.

Approved by the Board of Legacy Minerals Holdings Limited.

### For more information:

#### Investors:

**Chris Byrne**

CEO & Managing Director

[chris.byrne@legacyminerals.com.au](mailto:chris.byrne@legacyminerals.com.au)

+61 (0) 499 527 547

#### Media:

**Nicholas Read**

Read Corporate

[nicholas@readcorporate.com.au](mailto:nicholas@readcorporate.com.au)

+61 (0) 419 929 046

### DISCLAIMER AND PREVIOUSLY REPORTED INFORMATION

Information in this announcement is extracted from reports lodged as market announcements referred to above and available on the Company's website <https://legacyminerals.com.au/>. The Company confirms that it is not aware of any new information that materially affects the information included in the original market announcement and that all material assumptions and technical parameters underpinning the estimates in the relevant market announcement continue to apply and have not materially changed.

This announcement contains certain forward-looking statements. Forward looking statements are only predictions and are subject to risks, uncertainties and assumptions which are outside of the control of Legacy Minerals Holdings Limited (LGM). These risks, uncertainties and assumptions include commodity prices, currency fluctuations, economic and financial market conditions, environmental risks and legislative, fiscal or regulatory developments, political risks, project delay, approvals and cost estimates. Actual values, results or events may be materially different to those contained in this announcement. Given these uncertainties, readers are cautioned not to place reliance on forward-looking statements. Any forward-looking statements in this announcement reflect the views of LGM only at the date of this announcement. Subject to any continuing obligations under applicable laws and ASX Listing Rules, LGM does not undertake any obligation to update or revise any information or any of the forward-looking statements in this announcement to reflect changes in events, conditions or circumstances on which any forward-looking statements is based.

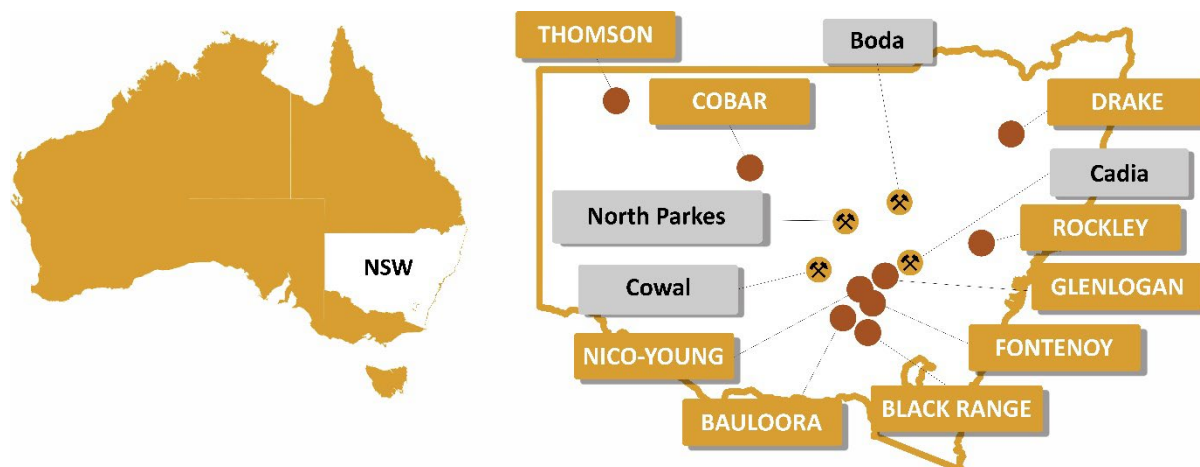
### COMPETENT PERSON'S STATEMENT

The information in this Report that relates to Exploration Targets, Exploration Results, Mineral Resources or Ore Reserves is based on information compiled by Thomas Wall, a Competent Person who is a Member of the Australian Institute of Geoscientists. Mr Wall is the Technical Director and a full-time employee of Legacy Minerals Pty Limited, the Company's wholly owned subsidiary, and a shareholder of the Company. Mr Wall has sufficient experience that is relevant to the style of mineralisation and type of deposit under consideration and to the activity being undertaken to qualify as a Competent Person as defined in the 2012 edition of the Australasian Code for Reporting of Exploration Results, Mineral Resources and Ore Reserves. Mr Wall consents to the inclusion of the matters based on this information in the form and context in which it appears in this announcement.

## About Legacy Minerals

Legacy Minerals is an ASX-listed public company that has been exploring gold, copper, and base-metal projects in NSW since 2017. The Company has ten projects that present significant opportunities for shareholders.

<p><b>Au-Ag Black Range</b> (EL9464, EL9589)</p> <p>Extensive low-sulphidation, epithermal system with limited historical exploration. Epithermal occurrences across 30km of strike.</p>	<p><b>Cu-Au Drake</b> (EL6273, EL9616, EL9727, ALA75)</p> <p>Large caldera (~150km<sup>2</sup>) with similar geological characteristics to other major pacific rim low-sulphidation deposits.</p>
<p><b>Cu-Au Rockley</b> (EL8926)</p> <p>Prospective for porphyry Cu-Au and situated in the Macquarie Arc Ordovician host rocks with historic high-grade copper mines.</p>	<p><b>Au-Cu (Pb-Zn) Cobar</b> (EL9511) <a href="#">Helix JV</a></p> <p>Undrilled targets next door to the Peak Gold Mines and along strike of the CSA copper mine.</p>
<p><b>Au-Ag Bauloora</b> (EL8994, EL9464) <a href="#">Newmont JV</a></p> <p>One of NSW's largest low-sulphidation, epithermal systems with a 27km<sup>2</sup> epithermal vein field.</p>	<p><b>Au Harden</b> (EL9657) <a href="#">Hilltops JV</a></p> <p>Substantial historical gold production from two high-grade and substantial orogenic systems.</p>
<p><b>Cu-Au Glenlogan</b> (EL9614) <a href="#">S2 Resources JV</a></p> <p>Untested porphyry search space located 55kms from Australia's largest porphyry complex, Cadia Valley.</p>	<p><b>Au-Cu Fontenoy</b> (EL8995) <a href="#">Earth AI JV</a></p> <p>A highly prospective and underexplored area for PGE, Ni, Au and Cu mineralisation with significant drill intercepts.</p>
<p><b>Cu-Au Thomson</b> (EL9190, EL9194, EL9728)</p> <p>A new and unexplored Intrusion-related gold and copper system search space with numerous 'bullseye' magnetic and gravity anomalies that remain untested.</p>	<p><b>Ni-Co Nico Young</b> (ELA6901)</p> <p>One of the largest nickel deposits in Australia with significant counter-cyclical exposure.</p>



**Figure 14.** Location summary of Legacy Minerals' Projects in NSW, Australia, and major mines and deposits

## Appendix 1 – Thomson Drill Collar Information and Visual Estimates

**Table 1:** Drill hole collar information

Hole ID	Easting	Northing	Elevation (m)	EOH (m)	Dip	Azimuth (True North)
F4DD001	772441	6613449	88	460.3	-70	45
CBDD004	249848	6607165	91	600.2	-73	210

**Table 2.** Visual Estimates of mineralisation.

Hole ID	From	To	Down-hole width	Estimated Vein %	Estimated Sulphide %	Preliminary Observations (sulphide type %)
F4DD001	88.8	460.3	371.5	0.5	5	Qtz +/- po(80%)-py(20%) vn/vlt
	130	130.1	0.1	50	10	Qtz-po(50%)-py(50%) vn
	197.6	197.7	0.1	80	10	Qtz-po(50%)-py(50%) vn
	282.0	282.4	0.4	80	50	Qtz-po(100%) vn
	310.3	311	0.7	70	0	Qtz vn
	343.1	343.5	0.4	70	40	Qtz-po(100%) vn
CBDD004	84.2	600.2	516	0.5	5	Qtz +/- po(80%)-py(20%) vn/vlt
	154.0	154.6	0.6	100	40	Qtz-po(100%) vn
	167.5	167.8	0.3	50	30	Qtz-po(50%)-py(50%) vn
	169.6	169.7	0.1	40	0	Qtz-crb bx
	276.0	276.5	0.5	80	50	Qtz-po(90%)-py(9%)-cpy(Tr%) bx
	431.6	431.7	0.1	40	50	Qtz-po(90%)-py(10%) vn
	558	558.3	0.3	50	100	Po(90%)-py(10%) vn

Observation codes: qtz – quartz, crb – carbonate, sph – sphalerite, cpy – chalcopyrite, po – pyrrhotite, py – pyrite, Tr – trace, vn – vein, vlt – veinlet, bx – breccia.

## Appendix 2 – JORC Code, 2021 Edition Table 1

### Section 1 Sampling Techniques and Data

Criteria	JORC Code Explanation	Commentary
<b>Sampling Techniques</b>	<p><i>Nature and quality of sampling (e.g., cut channels, random chips, or specific specialised industry standard measurement tools appropriate to the minerals under investigation, such as down hole gamma sondes, or handheld XRF instruments, etc). These examples should not be taken as limiting the broad meaning of sampling.</i></p> <p><i>Include reference to measures taken to ensure sample representivity and the appropriate calibration of any measurement tools or systems used.</i></p>	<p>Mud-rotary drilling was completed to fresh rock followed by NQ core (diameter: 45mm) to end of hole (EOH). LGM used a reputable drilling contractor, Ophir Drilling, with a suitable rig. Diamond drill core provide a high-quality sample that is logged for lithological, structural, geotechnical, and other attributes. Sub-sampling of the core is carried out as per industry best practice.</p> <p>Downhole surveys of dip and azimuth are conducted every 30m using a downhole Gyro to detect deviations of the hole from the planned dip and azimuth. The drill-hole collar locations are recorded using a handheld GPS, which has an accuracy of +/- 5m. All drill-hole collars may be surveyed to a greater degree of accuracy using a certified surveyor at a later date.</p>

An Olympus Vanta pXRF is used to spot analyse the drill core onsite. Readings are taken to help identify minerals and alteration with field calibration of the pXRF instrument using standards periodically performed.

The handheld pXRF results are only used for preliminary assessment of element compositions, prior to the receipt of assay results from the certified laboratory.

The drill core was orientated using suitable core orientation tool by the drilling contractor with LGM staff supervision.

These orientations are extended onto the remainder of the core and meter marks for logging. The visible structural features (veins, bedding, foliation, faults) are measured against the core orientation marks.

The drill core processing is underway to be cut in half, and assayed at a certified assay laboratory, ALS Laboratories. Core is prepared for analysis by cutting along the longitudinal line and then samples are numbered as per the pre-designed cut-sheet. The core is selectively sampled down the drill string at 1m nominal intervals across the mineralised zones, unless selected geological or mineralisation boundaries. A certified sample standard is inserted a minimum 1:50 samples.

Standards may also be added according to geology.

Where core was incompetent due to being transported cover or weathered rock, representative samples were collected along the axis of the core.

The drill core is being cut by LGM staff. Samples are being transported to ALS Laboratory in Orange for assaying. Samples are crushed to 6mm and then pulverized to 85% passing 75 microns. A 50g split of the sample was fired assayed for gold. The lower detection limit for gold is 0.002 ppm, which is believed to be an appropriate detection level. All other elements including copper and base metals (total 47 element suite) are analysed using a 4-acid acid digest and an ICP finish (ALS code: ME-MS61 + Au-AA21).

Assay standards, blanks and duplicates were analysed as part of the standard laboratory analytical procedures. Company standards were introduced into the sampling at a ratio minimum of 1 standard for every 50 samples.

Sample length: Core is sampled in 0.2m to 2m sample interval lengths except for minor changes due to geological or mineralisation boundaries. Pulps are retained by LGM for potential follow-up analysis.

*Aspects of the determination of mineralisation that are Material to the Public Report.*

*In cases where 'industry standard' work has been done this would be relatively simple (e.g. 'reverse circulation drilling was used to obtain 1 m samples from which 3 kg was pulverised to produce a 30 g charge for fire assay'). In other cases more explanation may be required, such as where there is coarse gold that has inherent sampling problems. Unusual commodities or mineralisation types (e.g., submarine nodules) may warrant disclosure of detailed information.*

**Drilling techniques**

*Drill type (e.g., core, reverse circulation, open-hole hammer, rotary air blast, auger, Bangka, sonic, etc)*

Diamond drilling using industry standard techniques. Mud rotary to refusal

<p><b>Drill sample recovery</b></p>	<p>and details (e.g., core diameter, triple or standard tube, depth of diamond tails, facesampling bit or other type, whether core is oriented and if so, by what method, etc).</p>	<p>(commonly fresh rock) and NQ3 (45mm) to end of hole (EOH).</p>
	<p>Method of recording and assessing core and chip sample recoveries and results assessed.</p>	<p>Core recoveries were recorded during drilling and reconciled during the core processing and geological logging.</p>
	<p>Measures taken to maximise sample recovery and ensure representative nature of the samples.</p>	<p>Core is measured and marked after each drill run using wooden blocks calibrating depth.</p>
	<p>Whether a relationship exists between sample recovery and grade and whether sample bias may have occurred due to preferential loss/gain of fine/coarse material.</p>	<p>To date, minimal sample recovery issues have been identified that would impact on potential sample bias in the competent fresh rocks that host the mineralised intervals.</p>
<p><b>Logging</b></p>	<p>Whether core and chip samples have been geologically and geotechnically logged to a level of detail to support appropriate Mineral Resource estimation, mining studies and metallurgical studies.</p>	<p>Systematic geological and geotechnical logging was undertaken. Data collection where appropriate includes:</p> <ul style="list-style-type: none"> <li>• Nature and extent of lithologies.</li> <li>• Relationship between lithologies.</li> <li>• Amount and mode of occurrence of ore minerals.</li> <li>• Location, extent and nature of structures such as bedding, cleavage, veins, faults etc. Structural data (alpha &amp; beta) are recorded for orientated core.</li> <li>• Geotechnical data is collected as required including recovery, RQD, fracture frequency, qualitative IRS, microfractures, veinlets and number of defect sets. For some geotechnical holes the orientation, nature of defects and defect fill may be recorded.</li> <li>• Representative bulk density by Archimedes principle may be taken.</li> <li>• Magnetic susceptibility recorded at 1m intervals for some holes as an orientation and alteration characterisation tool.</li> </ul>
	<p>Whether logging is qualitative or quantitative in nature. Core (or costean, channel, etc) photography.</p>	<p>Logging records lithology, mineralogy, mineralisation, veins, structures, weathering, colour and other noticeable features. This is generally qualitative except for % of sulphides and vein mineral content. Core trays are photographed in wet form.</p>
	<p>The total length and percentage of the relevant intersections logged.</p>	<p>All drill holes are geologically logged in full.</p>
<p><b>Sub-sampling techniques and sample preparation</b></p>	<p>If core, whether cut or sawn and whether quarter, half or all core taken.</p>	<p>Core is being cut using a conventional automatic core saw with core holding support. All samples are collected from the same side of drill core where possible. A half-core sample is submitted for assay analysis. Where core was incompetent due to being transported cover, weathered rock, or soft rock due to faulting, representative samples were collected along the axis of the core. This information is recorded in the cut-sheet and loaded into database.</p>
	<p>If non-core, whether riffled, tube sampled, rotary split, etc and whether sampled wet or dry.</p>	<p>Not applicable as results are for core drilling.</p>
	<p>For all sample types, the nature, quality and appropriateness of the sample preparation technique.</p>	<p>Drill core is cut in half along the length and the total half core submitted as the sample. This procedure meets industry standards</p>

	<p>where approximately 50% of the total sample taken from the diamond core is submitted. All mineralised intervals and surrounding wall rock were submitted for assay. Sample weights are recorded by the lab.</p> <p>Samples are delivered by Legacy Minerals Holdings personnel to ALS Minerals Laboratory, Orange NSW. Sample preparation will comprise of an industry standard of drying, jaw crushing and pulverising to -75 microns (85% passing) (ALS code PUL-23). Pulverisers are washed with QAQC tests undertaken (PUL-QC). Samples are dried, crushed and pulverized to produce a homogenous representative sub-sample for analysis.</p>	
	<p><i>Quality control procedures adopted for all subsampling stages to maximise representivity of samples.</i></p>	<p>Quality control procedures include submission of Certified Reference Materials (standards) and duplicates with each sample batch. QAQC results are routinely reviewed to identify and resolve any issues.</p> <p>All sub-sampling of the prepared core is completed by the laboratory.</p>
	<p><i>Measures taken to ensure that the sampling is representative of the in-situ material collected, including for instance results for field duplicate/second-half sampling.</i></p>	<p>The remaining half-core is stored and allows assay values to be viewed against the geology; and, where required, further samples may be submitted for quality assurance. Quarter core resampling may be completed in zones where appropriate.</p>
	<p><i>Whether sample sizes are appropriate to the grain size of the material being sampled.</i></p>	<p>The sample sizes are appropriate to correctly represent the mineralization based on style of mineralisation.</p> <p>All samples are to be analysed by ALS Global.</p>
<p><b>Quality of assay data and laboratory tests</b></p>	<p><i>The nature, quality and appropriateness of the assaying and laboratory procedures used and whether the technique is considered partial or total.</i></p>	<p>Samples are to be crushed to 6mm and then pulverized to 85% passing 75 microns. Gold is determined using a 50g charge. The resultant prill is dissolved in aqua regia with gold determined by flame AAS. The lower detection limit for gold is 0.002 ppm, which is believed to be an appropriate detection level. All other elements (total 47 element suite) are analysed using a 4-acid acid digest and an ICP finish (ALS code: ME-MS61 + Au-AA21).</p> <p>Gravity and Magnetic data has been reviewed by consultants and the Competent Person and is considered to be of a good quality and mapping sub-surface density.</p> <p>Laboratory QAQC involves the use of internal lab standards using certified reference material (CRMs), blanks and pulp duplicates as part of in-house procedures. The Company also submits a suite of CRMs and blanks where appropriate and selects appropriate samples for duplicates. CRM's are inserted approximately every 50 samples.</p>
	<p><i>For geophysical tools, spectrometres, handheld XRF instruments, etc, the parametres used in determining the analysis including instrument make and model, reading times, calibrations factors applied and their derivation, etc.</i></p>	
	<p><i>Nature of quality control procedures adopted (e.g., standards, blanks, duplicates, external laboratory checks) and whether acceptable levels of accuracy (i.e., lack of bias) and precision have been established.</i></p>	

		Sample preparation checks for fineness are performed by the laboratory to ensure the grind size of 85% passing 75µm is being attained.
<b>Verification of sampling and assaying</b>	<i>The verification of significant intersections by either independent or alternative company personnel.</i>	Significant intersections are verified by the Company's technical staff.
	<i>The use of twinned holes.</i>	No twinned holes were completed in the current drill programme.
	<i>Documentation of primary data, data entry procedures, data verification, data storage (physical and electronic) protocols.</i>	Primary data is captured onto a laptop through excel and using MxDeposit software and includes geological logging, sample data and QA/QC information. This data, together with the assay data, is stored both locally and entered into the LGM central online database which is managed by external consultants. All primary assay data is received from the laboratory as electronic data files which are imported into sampling database with verification procedures in place. QAQC analysis is undertaken for each laboratory report
	<i>Discuss any adjustment to assay data.</i>	No adjustments or calibrations will be made to any primary assay data collected for the purpose of reporting assay grades and mineralised intervals.
<b>Location of data points</b>	<i>Accuracy and quality of surveys used to locate drill holes (collar and down-hole surveys), trenches, mine workings and other locations used in Mineral Resource estimation.</i>	A handheld GPS was used to pick up collars with an accuracy of +/- 5m. Downhole surveys are conducted using a downhole OMNIx42 tool during drilling to record and monitor deviations of the hole from the planned dip and azimuth.
	<i>Specification of the grid system used.</i>	The grid system used is GDA94, MGA Zone 55 and 54
	<i>Quality and adequacy of topographic control.</i>	Geophysical surveys were conducted using a professional specialist contractor. Their survey control was considered accurate for the context in which it is presented.
<b>Data spacing and distribution</b>	<i>Data spacing for reporting of Exploration Results.</i>	The spacing and distribution of holes is not relevant to the drilling programs which are at the exploration stage rather than definition drilling. Drill holes were preferentially located at those areas considered most prospective.
	<i>Whether the data spacing and distribution is sufficient to establish the degree of geological and grade continuity appropriate for the Mineral Resource and Ore Reserve estimation procedure(s) and classifications applied. Whether sample compositing has been applied.</i>	The completed drilling at the Project is not used to establish or support a definition of Mineral Resource and Reserves and the classifications applied under the 2012 JORC code.
	<i>Whether sample compositing has been applied.</i>	No compositing has been applied to the exploration results.
<b>Orientation of data in relation to geological structure</b>	<i>Whether the orientation of sampling achieves unbiased sampling of possible structures and the extent to which this is known, considering the deposit type.</i>	The drill holes were orientated to intersect the dipping mineralised trends at as near perpendicular orientation possible (unless otherwise stated). The orientation of key structures may be locally variable and any relationship to mineralisation has yet to be identified.

		<p>The orientation of drilling relative to key mineralised structures is not considered likely to introduce sampling bias.</p> <p>Orientation of the mineralisation and structural trends is constrained by previous drilling.</p> <p>The orientation of sampling is considered appropriate for the current geological interpretation of the mineral style.</p> <p>No sample bias due to drilling orientation is known.</p>
	<p><i>If the relationship between the drilling orientation and the orientation of key mineralised structures is considered to have introduced a sampling bias, this should be assessed and reported if material.</i></p>	
<b>Sample security</b>	<p><i>The measures taken to ensure sample security.</i></p>	<p>All samples are bagged into tied calico bags, before being grouped into polyweave bags and transported to ALS Minerals Laboratory in Orange by Legacy Minerals personnel. All sample submissions are documented via ALS tracking system with results reported via email.</p> <p>Core and returned sample pulps are stored on site in secured stored for an appropriate length of time. Core was returned to a secure location each night during drilling.</p> <p>The Company has in place protocols to ensure data security.</p>
<b>Audits or reviews</b>	<p><i>The results of any audits or reviews of sampling techniques and data.</i></p>	<p>Sampling techniques and procedures are regularly reviewed internally, as is data. To date, no external audits of sampling techniques and data have been completed on the drilling programme.</p>

## Section 2 Reporting of Exploration Results

(Criteria in this section apply to all succeeding section)

Criteria	JORC Code Explanation	Commentary
<b>Mineral Tenement and Land Status</b>	<p><i>Type, name/reference number, location and ownership including agreements or material issues with third parties including joint ventures, partnerships, overriding royalties, native title interests, historical sites, wilderness or national park and environmental settings.</i></p> <p><i>The security of the tenure held at the time of reporting along with any known impediments to obtaining a licence to operate in the area.</i></p>	<p>The Thomson Project is comprised of EL9190, EL9194 and EL9728. The licences are owned 100% by Starlight Exploration Pty Ltd (a fully owned subsidiary of Legacy Minerals Holdings Ltd). There is a 1.5% NSR on EL9190 and EL919 which can be purchased by Starlight Exploration Pty Ltd at any stage.</p> <p>The land is primarily western lands lease.</p> <p>One Native Title claim is registered over the area (NNTT #NC1997/032).</p> <p>All of the tenements are current and in good standing.</p>
<b>Exploration Done by Other Parties</b>	<p><i>Acknowledgment and appraisal of exploration by other parties.</i></p>	<p>Early exploration throughout the 1980's was undertaken by WMC, Dominion, Norand and Preussag Australia in search for phosphate. Throughout 2005 to 2010 exploration was focused on the search for Cobar Type orebodies. Work during this time was completed by Compass Resources, Platsearch, Minotaur and Thomson Resources. Exploration work completed consisted of detailed airborne magnetics and radiometrics, limited detailed ground magnetics and detailed ground gravity surveys. 17 drill holes were attempted to test interpreted buried magnetic bodies.</p>

		Drilling was plagued by wet weather and poor drilling conditions, however successful tests discovered large alteration systems with magnetism attributable to hydrothermal pyrrhotite.
<b>Geology</b>	<i>Deposit type, geological setting and style of mineralisation</i>	<p>The basement rocks in the project area form part of the Thomson Orogen, but these rocks are covered by younger sediments of the Eromanga Basin and do not outcrop within the tenements. Targets in the basement beneath the cover rocks are the focus of the Company's exploration activities.</p> <p>The Thomson Orogen is one of the most poorly understood major orogenic belts in Australia. It covers a vast area of south central Queensland and extends into northwestern New South Wales, where the Company's tenements are located. The southern part of the Thomson Orogen is a major east-west oriented structure that runs broadly parallel to the Queensland-New South Wales border. Aeromagnetic data can be used to map structures in the basement, as well as to identify key anomalies that may be associated with mineralisation. A cooperative program between the Geological Surveys of Queensland and New South Wales and Geoscience Australia that commenced in 2005 led to a better understanding of the regional potential. High quality aeromagnetic data became available from this program, and this led to drill testing of some of the anomalies by a small number of companies.</p> <p>The southern Thomson Orogen is considered prospective for copper-gold intrusion-related deposits. These deposits can often have a magnetic signature that reflects either magnetic minerals associated with the alteration or ore bearing fluids. Discrete gravity anomalies may reflect the hydrothermal intrusion related system.</p>
<b>Drill hole Information</b>	<p><i>A summary of all information material to the understanding of the exploration results including tabulation of the following information for all Material drill holes:</i></p> <ul style="list-style-type: none"> <li>• Easting and northing of the drill hole collar</li> <li>• Elevation or RL (Reduced Level – elevation above sea level in metres) of the drill hole collar</li> <li>• Dip and azimuth of the hole</li> <li>• Down hole length and interception depth</li> <li>• Hole length</li> </ul> <p><i>If the exclusion of this information is justified on the basis that the information is not Material and this exclusion does not detract from the understanding of the report, the Competent Person should clearly explain why this is the case.</i></p>	<p>See Appendix 1. Information provided in Table 1.</p> <p>Not applicable. Information provided in Table 1.</p>
<b>Data aggregation methods</b>	<i>In reporting Exploration Results, weighting averaging techniques, maximum and/or minimum grade truncations (e.g., cutting of high</i>	No significant intervals are reported.

	<i>grades) and cut-off grades are usually Material and should be stated.</i>	
	<i>Where aggregated intercepts incorporate short lengths of high-grade results and longer lengths of low-grade results, the procedure used for such aggregation should be stated and some typical examples of such aggregations should be shown in detail.</i>	High-grade intervals are only reported where they differ significantly to the overall interval. Reporting of the shorter intercepts allows a more thorough understanding of the overall grade distribution.
	<i>The assumptions used for any reporting of metal equivalent values should be clearly stated.</i>	Not applicable: No metal equivalents reported.
<b>Relationship between mineralisation widths and intercept lengths</b>	<i>These relationships are particularly important in the reporting of exploration results. If the geometry of the mineralisation with respect to the drill hole angle is known, its nature should be reported. If it is not known and only the down hole lengths are reported, there should be a clear statement to this effect.</i>	The orientation of key structures may be locally variable and the relationship to mineralisation is yet to be identified. Drill holes are planned as perpendicular as possible in plan view to intersect the geological targets. At this early stage of exploration, drilling and geological knowledge of the Project accurate true widths are not yet possible.
<b>Diagrams</b>	<i>Appropriate maps and sections (with scales) and tabulations of intercepts should be included for any significant discovery being reported. These should include, but not be limited to a plane view of drill hole collar locations and appropriate sectional views.</i>	Refer to Figures in body of text.
<b>Balanced Reporting</b>	<i>Where comprehensive reporting of all Exploration Results is not practical, representative reporting of both low and high grades and/or widths should be practiced to avoid misleading reporting of Exploration Results.</i>	See body of the report.
<b>Other substantive exploration data</b>	<i>Other exploration data, if meaningful and material, should be reported including (but not limited to): geological observation; geophysical survey results; geochemical survey results; bulk samples – size and method of treatment; metallurgical test results; bulk density, groundwater, geotechnical and rock characteristics; potential deleterious or contaminating substances.</i>	<p>All material or meaningful data collected has been reported. The geological results are discussed in the body of the report.</p> <p>All results reported in this release have been compiled from open file information and appropriately listed in the reference list.</p> <p>Magnetic data was a fixed wing survey completed by UTS Geophysics Pty Ltd. Line spacing was 100m, traverse direction 180deg, tie-lines of 1000m, tie-lines 90 deg and sensor height 20m. Magnetic data maps magnetism in the rocks and hydrothermal alteration has been shown to occur with hydrothermal magnetic pyrrhotite in historic drilling.</p> <p>Dipole-Dipole Induced Polarisation survey was completed in 2008 by Zonge Geophysics and included 4 N-S Oriented lines at 4 different magnetic anomalies (CutB,CutA, CutAC and CutD) at 100m spacing. IP maps chargeability of the rocks in the CutA anomaly appear to be mapping sulphide alteration and veins intercepted in drilling.</p> <p>Haines Surveys completed a ground gravity survey in 2008. Survey consisted of 2,000 stations at 50m by 50m.</p>
<b>Further Work</b>	<i>The nature and scale of planned further work</i>	See body of report.

(e.g., tests for lateral extensions or depth extensions or large – scale step – out drilling). Diagrams clearly highlighting the areas of possible extensions, including the main geological interpretations and future drilling areas, provided this information is not commercially sensitive.

See figures in body of report. Further exploration will be planned based on ongoing drill results, geophysical surveys and geological assessment of prospectivity.

## Endnotes

<sup>i</sup> ASX Release LGM, 3 April 2025, Significant Intrusion-Related Gold Confirmed at Thomson Project

<sup>ii</sup> Eastern Metals Limited, 18 August 2021; ASX Release TMZ, 22 September 2011, Drilling intersects three large polymetallic mineralised systems; ASX Release TMZ, 7 November 2011, Drilling results indicate discovery of an intrusion-related gold system, ASX Release TMZ, 28 November 2011, CEO's presentation AGM.

<sup>iii</sup> ASX Release RIO, 20 February 2025, Reserves and Resources - Supporting Information and Table 1s  
Winu Total Mineral Resource (Indicated and Inferred):

Tonnage (Mt)	% Cu Grade	Au (g/t)	Ag (g/t)
721	0.4%	0.34	2.21

<sup>iv</sup> Greatland Gold, 28 February 2024, Presentation *Building a platform for growth*  
Greatland Gold Total Mineral Resource (Indicated and Inferred):

Tonnage (Mt)	% Cu Grade	Au (g/t)
131	0.21%	1.7

<sup>v</sup> Eastern Metals Limited, 18 August 2021; ASX Release TMZ, 22 September 2011, Drilling intersects three large polymetallic mineralised systems; ASX Release TMZ, 7 November 2011, Drilling results indicate discovery of an intrusion-related gold system, ASX Release TMZ, 28 November 2011, CEO's presentation AGM.

<sup>vi</sup> Minview, Geological Survey of NSW: [MinView | Regional NSW | Mining, Exploration and Geoscience](#)

<sup>vii</sup> Lachlan Fold Belt Project <https://www.ga.gov.au/about/projects/resources/lachlan>