

Currajong confirmed as a high-grade Scandium opportunity

Highlights

- **Latest drill assays confirm Currajong as a high-grade scandium opportunity with multiple strong scandium intercepts, i.e.**
 - 11m @ 357 ppm Sc (548ppm Sc Oxide) from 16m in FI2797 **including 6m @ 510ppm Sc (782ppm Sc Oxide)**
 - 26m @ 344 ppm Sc (528ppm Sc Oxide) from 9m in FI2792 **including 13m @ 453ppm Sc (695ppm Sc Oxide)**
 - 9m @ 386 ppm Sc (592ppm Sc Oxide) from 17m in FI2795 **including 6m @ 450ppm Sc (690ppm Sc Oxide)**
 - 7m @ 226 ppm Sc (347ppm Sc Oxide) from 9m in FI2787 **including 2m @ 375ppm (575ppm Sc Oxide),**
 - 17m @ 210 ppm Sc (322ppm Sc Oxide) from 8m in FI2786 **including 9m @ 253ppm Sc (388ppm Sc Oxide),** and
 - **3m @ 370 ppm Sc (568ppm Sc Oxide)** from 23m in FI2794
- **The scandium intercepts lie within a lower saprolite (weathered) zone developed over a range of rock types, including prospective ultramafic pyroxenite**
- **Strongly anomalous scandium also intersected in underlying fresh pyroxenite rocks, i.e.**
 - 7m @ 176ppm Sc (270ppm Sc Oxide) from 38m, and
 - 8m @ 103ppm Sc (158ppm Sc Oxide) from 49m in FI2797
- **Further assay results from remaining drillholes expected by late July 2025 ahead of a scandium mineral resource estimate expected in August 2025**

Commenting on the announcement, Rimfire’s Managing Director Mr David Hutton said: *“Currajong continues to deliver high-grade drill results confirming the prospect as one of the most significant scandium opportunities in the Fifield area in NSW – Australia’s scandium epicentre.*

While the initial estimate of a scandium mineral resource by end June 2025 was ambitious, the successful assay results received to date enable us to commence the estimation of a scandium mineral resource for the area with an expected delivery date of August 2025. Further assay results are expected beforehand in late July 2025.

This work is taking place at a time when global supply of this strategically important critical mineral is being threatened by the recent Chinese restrictions on scandium exports.

Rimfire has one of the largest scandium – prospective landholdings in the Fifield Scandium District, which has real potential to be a long term, low risk, secure supplier of this highly valuable metal for the Western World”.

MANAGEMENT

DAVID HUTTON
Managing Director / CEO

DR PETER CROWHURST
Exploration Manager

GREG KEANE
Chief Financial Officer and
Alternative Director for Ian
McCubbing

BOARD

IAN MCCUBBING
Chairman

ANDREW KNOX
Non-Executive Director

STEFAN ROSS
Company Secretary

REGISTERED OFFICE

Suite 2, Level 11
385 Bourke Street
MELBOURNE
VICTORIA 3000

CONTACT DETAILS

DAVID HUTTON
+ 61 417 974 843

GREG KEANE
+ 61 497 805 918

rimfire@rimfire.com.au

www.rimfire.com.au

Rimfire Pacific Mining (**ASX: RIM**, “Rimfire” or “the **Company**”) has now received the second batch of assay results from the recently completed air core drilling program at its wholly - owned Currajong Scandium Prospect, which is located within the Fifield District, Australia’s scandium epicentre, approximately 70 km NW of Parkes in central NSW (*Figure 4*).

Assay results for the first 520 samples were previously released by Rimfire to the market on 8 May 2025.

Assay results for the third and final batch of samples are expected by the end of July 2025.

Currajong Scandium Prospect air core drilling

200 air core holes (FI2680 – FI2879 / 6,457 metres) were originally drilled by Rimfire in April – May 2025 on a regular grid pattern (50 - 100 metre centres) over magnetic anomalies that define the 3-kilometre-long scandium – prospective Currajong Ultramafic Belt (*Figures 5 and 6*).

Drillholes intersected a range of weathered mafic, ultramafic and sedimentary rock types including pyroxenite, which is known from Rimfire’s work to be an important primary scandium source rock throughout the broader Fifield district (see *Rimfire ASX Announcements dated 28 March, 2 April and 16 April 2025*).

During the drilling, every hole was geologically logged in full and screened in the field with a portable XRF (pXRF) to prioritise drill samples for subsequent laboratory analysis. All assay data reported in this ASX Announcement has been generated from laboratory analysis.

Assay results for the first 520 samples were previously by Rimfire released to the market on 8 May 2025.

Assay results for the next 485 samples (which represents 22 holes, i.e. FI2748-FI2756, FI2759-FI2761, FI2791-FI2799, FI2866) have now been received with multiple high-grade scandium intercepts returned, including;

- 11m @ 357 ppm Sc (548ppm Sc Oxide) from 16m in FI2797 *including 6m @ 510ppm Sc (782ppm Sc Oxide)*
- 26m @ 344 ppm Sc (528ppm Sc Oxide) from 9m in FI2792 *including 13m @ 453ppm Sc (695ppm Sc Oxide)*
- 9m @ 386 ppm Sc (592ppm Sc Oxide) from 17m in FI2795 *including 6m @ 450ppm Sc (690ppm Sc Oxide)*
- 7m @ 226 ppm Sc (347ppm Sc Oxide) from 9m in FI2787 *including 2m @ 375ppm (575ppm Sc Oxide),*
- 17m @ 210 ppm Sc (322ppm Sc Oxide) from 8m in FI2786 *including 9m @ 253ppm Sc (388ppm Sc Oxide), and*
- **3m @ 370 ppm Sc (568ppm Sc Oxide)** from 23m in FI2794

Note: Sc oxide (Sc₂O₃) is calculated using a conversion factor of 1.5338, i.e. Sc grade x 1.5338 equals the Sc Oxide grade.

As shown in *Figures 1-3*, scandium at Currajong typically occurs within a flat lying weathered ferruginous zone (lower saprolite) present beneath a thin veneer of barren gravels over ultramafic pyroxenite rocks - which are known from Rimfire’s work throughout the broader Fifield district to

be an important primary scandium source rock (see *Rimfire ASX Announcements dated 28 March, 2 April and 16 April 2025*).

The drilling also intersected unusually high levels of scandium in fresh underlying pyroxenite at the bottom of drill hole FI2797, the significance of which is still being determined.

FI2797 intersected 7m @ 176ppm Sc (**270ppm Sc Oxide**) from 38m and 8m @ 103ppm Sc (**158ppm Sc Oxide**) from 49 metres with a maximum one metre value of 210ppm Sc (322ppm Sc Oxide) at 41 metres which exceeds the grades previously obtained in other fresh pyroxenite samples from Rimfire's Melrose and Murga prospects.

By way of comparison, fresh pyroxenite intersected in diamond drilling conducted by Rimfire at Melrose in 2023 returned 62m @ 78ppm Sc (**120ppm Sc Oxide**) from 81 metres in FI2400 with a maximum one metre value of 100ppm Sc (**150ppm Sc Oxide**) (see *Rimfire ASX Announcement dated 6 December 2023*).

Fresh pyroxenite intersected in Rimfire diamond drilling at the Glenburn magnetic anomaly at Murga in late 2024 returned 122.00m @ 94ppm Sc (**144ppm Sc Oxide**) from 28 metres in FI2679 including 13.5m @ 114ppm Sc (**175 Sc Oxide**) with a maximum one metre value of 189ppm Sc (290ppm Sc Oxide) (see *Rimfire ASX Announcement dated 28 March 2025*).

Significance of the results and next steps

Most of the high-grade intercepts detailed in this ASX Announcement occurred within a coherent zone (approximately 400 x 300 metres in size) present at its southern end ("Southern Zone") of the Currajong Ultramafic and which remains partly open laterally.

As shown in *Figures 5 and 6*, most of the ultramafic is overlain by anomalous (50 – 100ppm Sc) scandium and it is reasonable to assume that the remaining drill assays (expected by late July 2025) will define other zones (or pods) of higher-grade scandium along strike from the Southern Zone.

Given the positive drill results received to date plus the density of drilling (nominal 50 metre centres) throughout Southern Zone, the Company will now commence the estimation of a scandium mineral resource for Currajong.

The work will initially focus on the southern zone and will be potentially expanded to incorporate other areas of anomalous scandium within the broader Currajong Ultramafic as remaining assay results are received.

At the time of writing, the remaining assay results are expected to be received by late July 2025, and the mineral resource estimate is expected to be completed in August 2025, which is later than the previously stated target date of 30 June 2025 due to delays surrounding the Arbitration process, laboratory turnaround times and wet weather onsite.

China export restrictions severely constrain global scandium supply

The current drill program comes at a time when global supply of this strategically important critical mineral is being threatened because of the recent Chinese restrictions on scandium exports.

Rimfire notes that the Chinese Government has implemented export restrictions on rare earth elements, including scandium in response to recent United States of America. tariff increases on Chinese goods - from 34% to 54% on 2 April 2025, and further to 145% as of 10 April 2025.

This is significant as China currently accounts for approximately 67%¹ of global primary scandium feed stocks and refines approximately 90%² scandium supply. Rimfire anticipates that these new restrictions will severely constrain international availability of scandium and highlight China's dominance within the space.

It is also worth noting that the USA has been and continues to be a net importer of scandium³ and these restrictions highlight the need for alternative sources of scandium be developed to meet future needs.

The Fifield Scandium District, in which Rimfire has one of the largest scandium – prospective landholdings, has significant potential to be a long term, low risk, secure supplier of scandium for the Western World.

¹ European Commission: Directorate-General for Internal Market, Industry, Entrepreneurship and SMEs, Grohol, M. and Veeh, C., *Study on the critical raw materials for the EU 2023 – Final report*, Publications Office of the European Union, 2023.

² <https://pmarketresearch.com/auto/drone-turbojet-engine-market>

³ USGS Mineral commodity summaries 2025 <https://pubs.usgs.gov/publication/mcs2025>

For personal use only



Figure 1: F12797 chip tray photo with scandium intervals highlighted - 11m @ 357 ppm Sc (548ppm Sc Oxide) from 16m including 6m @ 510ppm Sc (782ppm Sc Oxide), 7m @ 176ppm Sc (270ppm Sc Oxide) from 38m and 8m @ 103ppm Sc (158ppm Sc Oxide) from 49 metres. Each compartment in chip tray represents a 1 – metre downhole interval.

For personal use only

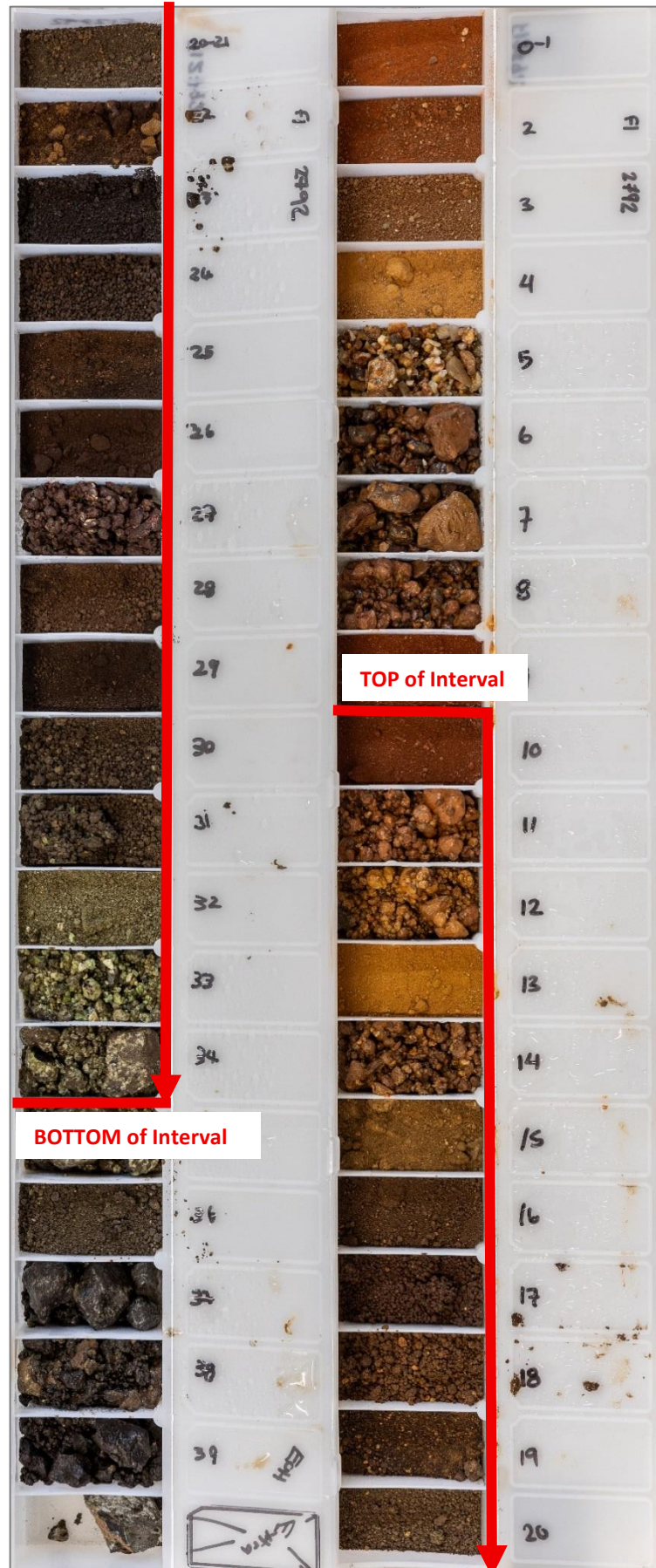


Figure 2: FI2792 chip tray photo with scandium interval highlighted - 26m @ 344 ppm Sc (528ppm Sc Oxide) from 9m in FI2792 including 13m @ 453ppm Sc (695ppm Sc Oxide). Each compartment in chip tray represents a 1 – metre downhole interval.

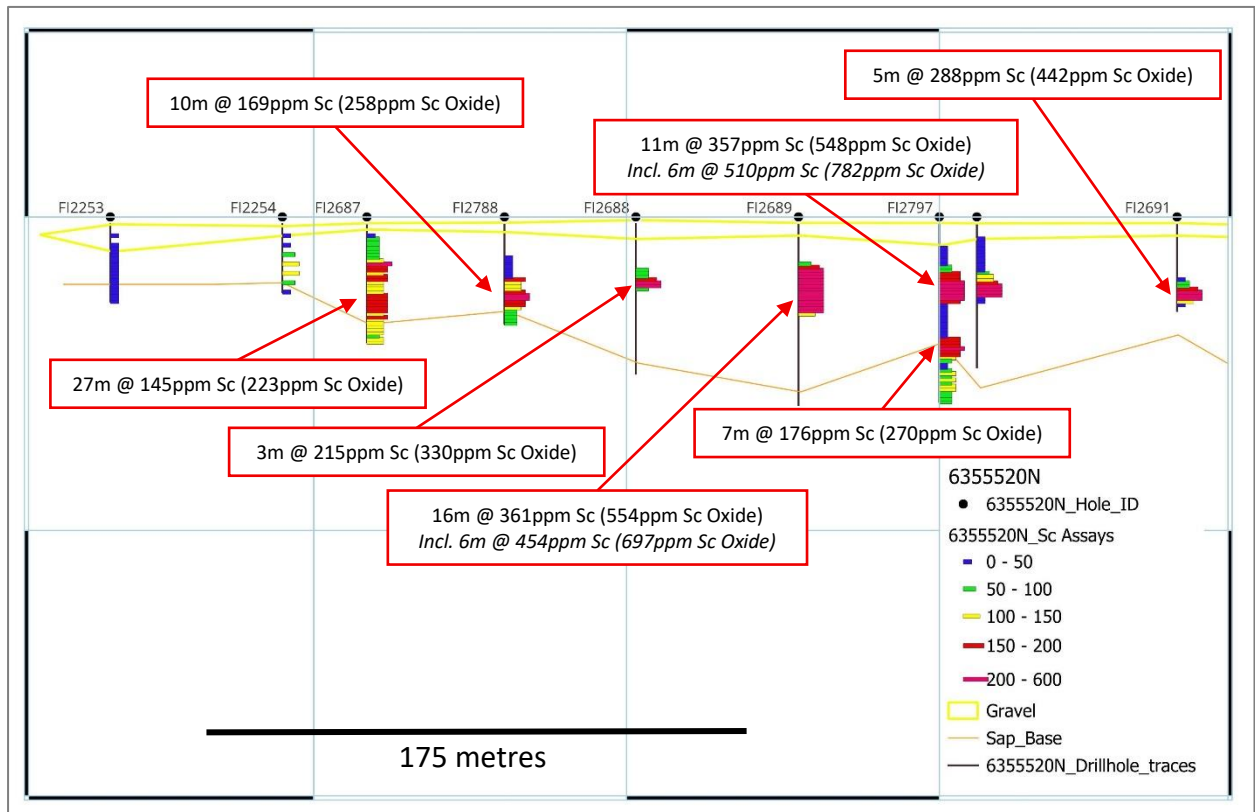


Figure 3: 6,355,520N Cross section (looking north) through the Currajong Southern Zone. Near surface gravel zone and base of saprock (approximate top of fresh rock) shown. See Figure 6 for section location.

For personal use only

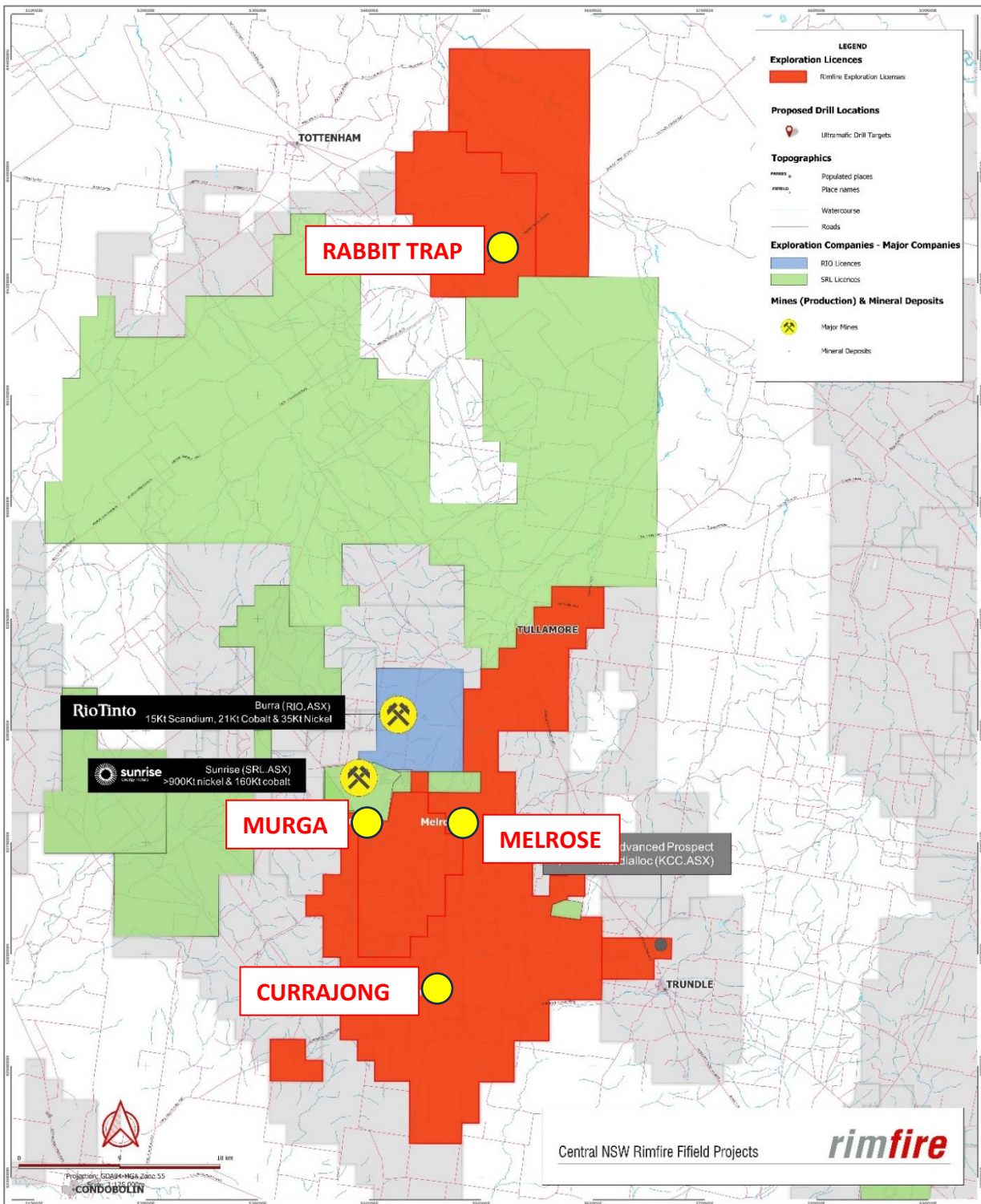


Figure 4: Fifield Scandium District project locations showing Rimfire (red) and competitors (Rio Tinto – blue and Sunrise Energy Metals – green).

For personal use only

For personal use only

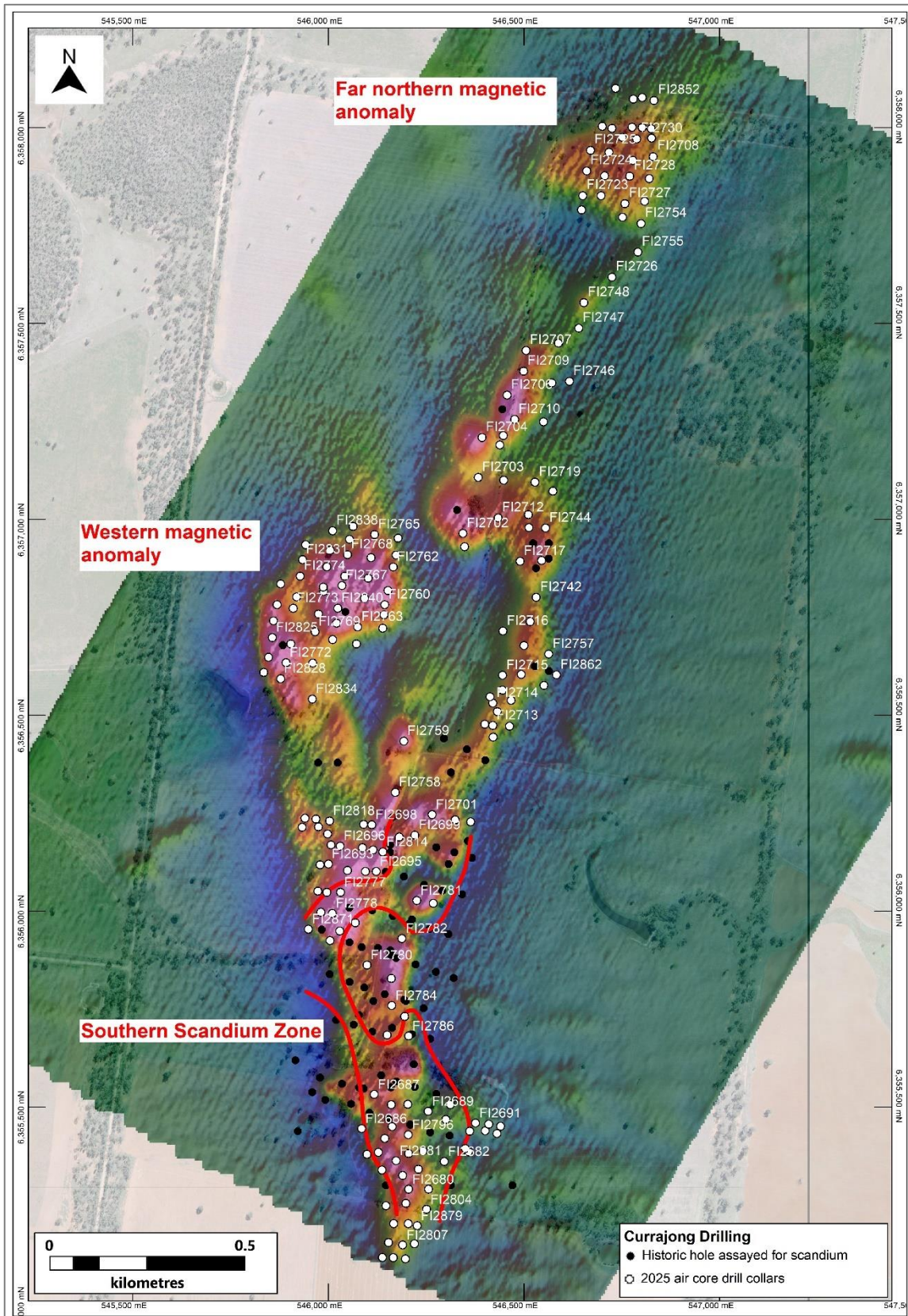


Figure 5: Currajong Prospect drill collar plan - 2025 air core holes (white dots) and historic holes assayed for scandium (black dots) with a VD_RTP mag. image and aerial photography background.

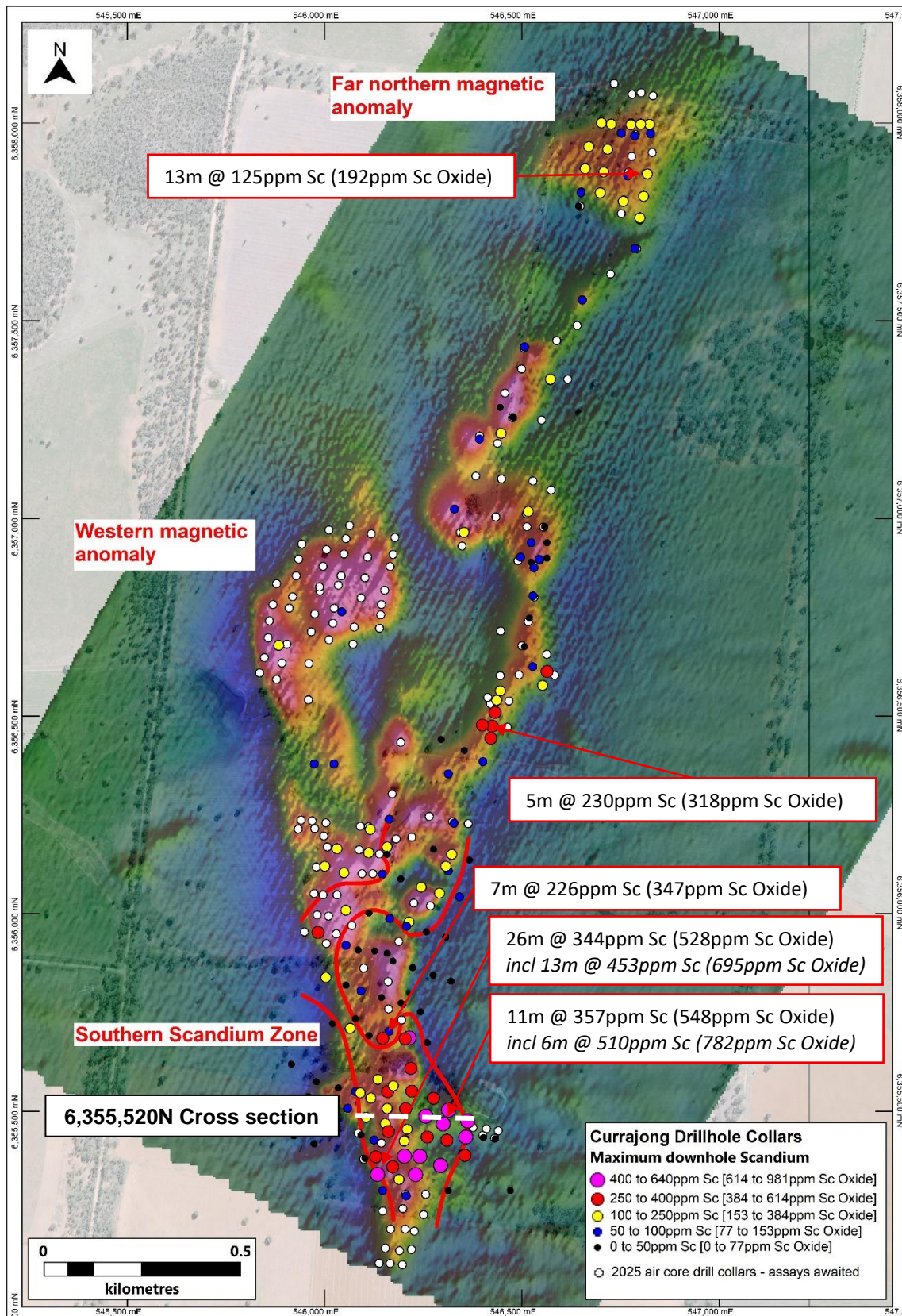


Figure 6: Currajong Prospect – 2025 air core drill intercepts (received to date) and historic holes assayed for scandium (colour coded by max downhole Sc value) on a VD_RTP magnetic image and aerial photography background.

For personal use only

Table 1: Currajong air core drilling specifications – with all intercepts to date. Latest assays are highlighted green. Assays awaited for all other holes.

Hole_ID	Easting	Northing	RL	EOH_Depth	Dip	From	Width	Sc_ppm	Sc2O3_ppm	
FI2680	546,205	6,355,290	255	43	-90	No Significant Intercept				
FI2681	546,173	6,355,363	255	32	-90	18	9	183	281	
FI2682	546,296	6,355,361	255	54	-90	17	5	304	466	
FI2683	546,128	6,355,384	255	42	-90	11	18	185	283	
						and	35	4	168	258
FI2684	546,242	6,355,388	255	46	-90	12	12	367	563	
						including	18	5	464	712
FI2685	546,358	6,355,386	255	67	-90	21	5	207	318	
FI2686	546,085	6,355,445	255	35	-90	No Significant Intercept				
FI2687	546,117	6,355,532	255	40	-90	13	27	145	223	
FI2688	546,203	6,355,507	255	50	-90	19	3	215	330	
FI2689	546,255	6,355,489	255	60	-90	15	16	361	554	
						including	23	6	454	697
FI2690	546,312	6,355,506	255	48	-90	18	7	265	406	
FI2691	546,376	6,355,459	255	30	-90	22	5	288	442	
FI2692	546,361	6,355,438	255	36	-90	22	6	285	437	
FI2693	546,000	6,356,120	255	23	-90	8	13	112	172	
FI2694	546,049	6,356,104	255	19	-90	17	1	110	171	
FI2695	546,122	6,356,101	255	13	-90	Not Assayed				
FI2696	546,030	6,356,166	255	14	-90	13	1	110	171	
FI2697	546,114	6,356,156	255	13	-90	10	1	110	171	
FI2698	546,111	6,356,220	255	13	-90	No Significant Intercept				
FI2699	546,221	6,356,194	255	10	-90	Not Assayed				
FI2700	546,324	6,356,233	255	15	-90	No Significant Intercept				
FI2701	546,265	6,356,246	255	11	-90	Not Assayed				
FI2702	546,344	6,356,964	255	25	-90	No Significant Intercept				
FI2703	546,383	6,357,107	255	15	-90	Not Assayed				
FI2704	546,393	6,357,209	255	36	-90	No Significant Intercept				
FI2705	546,447	6,357,214	255	39	-90	32	1	150	230	
FI2706	546,457	6,357,317	255	21	-90	Not Assayed				
FI2707	546,505	6,357,431	255	30	-90	No Significant Intercept				
FI2708	546,830	6,357,926	255	52	-90	Not Assayed				
FI2709	546,499	6,357,378	255	39	-90	Not Assayed				
FI2710	546,476	6,357,255	255	34	-90	Not Assayed				
FI2711	546,448	6,357,100	255	41	-90	Not Assayed				
FI2712	546,434	6,357,004	255	19	-90	Not Assayed				
FI2713	546,420	6,356,474	255	24	-90	17	5	230	353	
FI2714	546,420	6,356,531	255	44	-90	30	14	170	261	
FI2715	546,445	6,356,602	255	53	-90	Not Assayed				
FI2716	546,446	6,356,715	255	44	-90	Not Assayed				
FI2717	546,490	6,356,893	255	27	-90	No Significant Intercept				
FI2718	546,511	6,357,012	255	45	-90	26	13	148	228	
FI2719	546,528	6,357,095	255	42	-90	Not Assayed				
FI2720	546,550	6,357,249	255	37	-90	Not Assayed				
FI2721	546,571	6,357,348	255	18	-90	11	5	124	190	
FI2722	546,588	6,357,450	255	20	-90	Not Assayed				
FI2723	546,650	6,357,826	255	28	-90	No Significant Intercept				
FI2724	546,660	6,357,889	255	18	-90	12	2	105	161	
FI2725	546,670	6,357,942	255	23	-90	No Significant Intercept				
FI2726	546,725	6,357,618	255	6	-90	Not Assayed				
FI2727	546,758	6,357,806	255	47	-90	13	16	136	208	
FI2728	546,770	6,357,876	255	28	-90	No Significant Intercept				
FI2729	546,778	6,357,916	255	5	-90	Not Assayed				
FI2730	546,788	6,357,971	255	42	-90	No Significant Intercept				
FI2731	546,826	6,357,973	255	32	-90					

For personal use only

FI2732	546,825	6,357,997	255	45	-90				
FI2733	546,802	6,358,000	255	37	-90				
FI2734	546,776	6,358,001	255	45	-90				
FI2735	546,751	6,357,975	255	52	-90				
FI2736	546,725	6,357,998	255	48	-90				
FI2737	546,700	6,358,003	255	47	-90				
FI2738	546,647	6,357,790	255	41	-90				
FI2739	546,493	6,356,604	255	31	-90				
FI2740	546,500	6,356,678	255	50	-90				
FI2741	546,516	6,356,739	255	49	-90				
FI2742	546,531	6,356,801	255	49	-90				
FI2743	546,545	6,356,895	255	32	-90				
FI2744	546,555	6,356,978	255	42	-90				
FI2745	546,574	6,357,072	255	41	-90				
FI2746	546,616	6,357,352	255	40	-90				
FI2747	546,640	6,357,488	255	20	-90				
FI2748	546,653	6,357,553	255	18	-90	No Significant Intercept			
FI2749	546,697	6,357,826	255	32	-90	No Significant Intercept			
FI2750	546,706	6,357,877	255	40	-90	12	12	101	155
FI2751	546,717	6,357,937	255	42	-90	12	2	100	153
FI2752	546,820	6,357,870	255	46	-90	9	13	125	192
FI2753	546,808	6,357,812	255	43	-90	4	16	116	178
FI2754	546,799	6,357,755	255	36	-90	No Significant Intercept			
FI2755	546,791	6,357,682	255	27	-90	No Significant Intercept			
FI2756	546,551	6,356,576	255	52	-90	27	2	210	322
FI2757	546,563	6,356,656	255	38	-90				
FI2758	546,171	6,356,303	255	24	-90				
FI2759	546,193	6,356,434	255	40	-90	No Significant Intercept			
FI2760	546,144	6,356,782	255	36	-90	No Significant Intercept			
FI2761	546,152	6,356,818	255	39	-90	No Significant Intercept			
FI2762	546,166	6,356,878	255	42	-90				
FI2763	546,075	6,356,725	255	45	-90				
FI2764	546,102	6,356,850	255	42	-90				
FI2765	546,118	6,356,961	255	43	-90				
FI2766	546,021	6,356,735	255	40	-90				
FI2767	546,035	6,356,831	255	36	-90				
FI2768	546,049	6,356,910	255	41	-90				
FI2769	545,966	6,356,713	255	36	-90				
FI2770	545,988	6,356,816	255	39	-90				
FI2771	545,996	6,356,879	255	34	-90				
FI2772	545,892	6,356,634	255	26	-90				
FI2773	545,910	6,356,773	255	30	-90				
FI2774	545,928	6,356,855	255	35	-90				
FI2775	545,847	6,356,648	255	25	-90				
FI2776	545,860	6,356,741	255	30	-90				
FI2777	546,031	6,356,048	255	45	-90				
FI2778	546,010	6,355,994	255	39	-90				
FI2779	546,069	6,355,970	255	29	-90				
FI2780	546,099	6,355,862	255	39	-90				
FI2781	546,226	6,356,027	255	21	-90				
FI2782	546,188	6,355,930	255	30	-90				
FI2783	546,161	6,355,828	255	24	-90				
FI2784	546,162	6,355,759	255	8	-90				
FI2785	546,195	6,355,731	255	24	-90				
FI2786	546,205	6,355,681	255	35	-90	8	17	210	322
including						9	9	253	388
FI2787	546,150	6,355,684	255	18	-90	9	7	226	347
including						9	2	375	575
FI2788	546,161	6,355,506	255	34	-90	19	10	169	259

For personal use only

FI2789	546,163	6,355,450	255	33	-90	24	4	165	253
FI2790	546,144	6,355,420	255	35	-90	No Significant Intercept			
FI2791	546,099	6,355,379	255	48	-90	No Significant Intercept			
FI2792	546,137	6,355,339	255	39	-90	9	26	344	528
including						17	13	453	695
FI2793	546,190	6,355,325	255	37	-90	15	12	148	227
FI2794	546,230	6,355,341	255	29	-90	23	3	370	568
FI2795	546,205	6,355,381	255	37	-90	17	9	386	592
including						19	6	450	690
FI2795	546,205	6,355,381	255	37	-90	31	6	118	181
FI2796	546,204	6,355,429	255	15	-90	No Significant Intercept			
FI2797	546,300	6,355,468	255	59	-90	16	11	357	548
including						20	6	510	782
FI2797	546,300	6,355,468	255	59	-90	38	7	176	270
FI2797	546,300	6,355,468	255	59	-90	49	8	103	158
FI2798	546,401	6,355,439	255	31	-90	No Significant Intercept			
FI2799	546,431	6,355,432	255	60	-90	No Significant Intercept			
FI2800	546,440	6,355,451	255	48	-90				
FI2801	546,410	6,355,456	255	48	-90				
FI2802	546,350	6,355,394	255	40	-90				
FI2803	546,256	6,355,290	255	50	-90				
FI2804	546,251	6,355,239	255	42	-90				
FI2805	546,198	6,355,254	255	41	-90				
FI2806	546,204	6,355,202	255	47	-90				
FI2807	546,190	6,355,148	255	42	-90				
FI2808	546,166	6,355,115	255	60	-90				
FI2809	546,147	6,355,248	255	48	-90				
FI2810	545,979	6,356,118	255	21	-90				
FI2811	546,095	6,356,101	255	24	-90				
FI2812	546,007	6,356,169	255	24	-90				
FI2813	546,087	6,356,162	255	25	-90				
FI2814	546,139	6,356,151	255	20	-90				
FI2815	546,090	6,356,221	255	20	-90				
FI2816	546,181	6,356,189	255	24	-90				
FI2817	546,364	6,356,228	255	21	-90				
FI2818	546,003	6,356,230	255	18	-90				
FI2819	545,968	6,356,235	255	18	-90				
FI2820	545,940	6,356,237	255	22	-90				
FI2821	545,998	6,356,197	255	18	-90				
FI2822	545,975	6,356,215	255	18	-90				
FI2823	545,933	6,356,214	255	22	-90				
FI2824	545,835	6,356,609	255	17	-90				
FI2825	545,857	6,356,698	255	23	-90				
FI2826	545,869	6,356,782	255	28	-90				
FI2827	545,878	6,356,835	255	30	-90				
FI2828	545,878	6,356,593	255	22	-90				
FI2829	545,904	6,356,682	255	16	-90				
FI2830	545,919	6,356,802	255	24	-90				
FI2831	545,934	6,356,897	255	35	-90				
FI2832	545,942	6,356,935	255	13	-90				
FI2833	545,960	6,356,633	255	30	-90				
FI2834	545,959	6,356,541	255	36	-90				
FI2835	545,975	6,356,758	255	29	-90				
FI2836	545,987	6,356,827	255	35	-90				
FI2837	546,005	6,356,921	255	36	-90				
FI2838	546,011	6,356,971	255	18	-90				
FI2839	546,011	6,356,693	255	27	-90				
FI2840	546,024	6,356,773	255	30	-90				
FI2841	546,042	6,356,855	255	32	-90				

For personal use only

FI2842	546,054	6,356,949	255	18	-90				
FI2843	546,063	6,356,982	255	22	-90				
FI2844	546,072	6,356,682	255	26	-90				
FI2845	546,092	6,356,799	255	43	-90				
FI2846	546,139	6,356,722	255	20	-90				
FI2847	546,142	6,356,756	255	36	-90				
FI2848	546,173	6,356,909	255	16	-90				
FI2849	546,178	6,356,952	255	20	-90				
FI2850	546,348	6,356,930	255	11	-90				
FI2851	546,438	6,357,190	255	28	-90				
FI2852	546,832	6,358,069	255	36	-90				
FI2853	546,802	6,358,077	255	45	-90				
FI2854	546,779	6,358,073	255	42	-90				
FI2855	546,734	6,358,100	255	47	-90				
FI2856	546,752	6,357,771	255	36	-90				
FI2857	546,109	6,356,902	255	42	-90				
FI2858	546,513	6,356,979	255	24	-90				
FI2859	546,445	6,356,564	255	36	-90	28	6	190	291
FI2860	546,432	6,356,509	255	32	-90	18	14	215	330
including						19	4	273	419
FI2861	546,421	6,356,444	255	33	-90	19	10	185	284
including						20	2	260	399
FI2862	546,583	6,356,603	255	54	-90				
FI2863	546,467	6,356,538	255	18	-90				
FI2864	546,463	6,356,472	255	16	-90				
FI2865	546,413	6,356,547	255	30	-90				
FI2866	546,400	6,356,477	255	25	-90	20	4	238	365
FI2867	545,973	6,356,051	255	16	-90				
FI2868	545,996	6,356,048	255	18	-90				
FI2869	546,268	6,356,020	255	14	-90				
FI2870	545,981	6,355,997	255	22	-90				
FI2871	545,949	6,355,954	255	30	-90				
FI2872	546,004	6,355,925	255	14	-90				
FI2873	546,029	6,355,949	255	18	-90				
FI2874	546,167	6,355,202	255	46	-90				
FI2875	546,154	6,355,154	255	42	-90				
FI2876	546,138	6,355,116	255	24	-90				
FI2877	546,197	6,355,112	255	24	-90				
FI2878	546,220	6,355,151	255	24	-90				
FI2879	546,227	6,355,197	255	24	-90				

ENDS

This announcement is authorised for release to the market by the Board of Directors of Rimfire Pacific Mining Limited.

For further information please contact:

David Hutton
 Managing Director / CEO
 Ph: +61 417 974 843

Greg Keane
 CFO / Alt. Director for Ian McCubbing
 Ph: +61 497 805 918

For personal use only

JORC Reporting

Table 2: JORC Code Reporting Criteria

Section 1 Sampling Techniques and Data – Diamond Drilling

Criteria	JORC Code explanation	Commentary
<p>Sampling techniques</p>	<p>Nature and quality of sampling (e.g., cut channels, random chips, or specific specialised industry standard measurement tools appropriate to the minerals under investigation, such as down hole gamma sondes, or handheld XRF instruments, etc). These examples should not be taken as limiting the broad meaning of sampling.</p>	<p>This ASX Announcement provides a further update on air core recently undertaken by Rimfire at the Currajong Scandium Prospect. This ASX Announcement follows previous updates released to the market on 16 April 2025 and 8 May 2025.</p> <p>This ASX Announcement details assay results for holes FI2748-FI2756, FI2759-FI2761, FI2791-FI2799, FI2866, as well as several other holes not previously reported.</p> <p>Holes subject to this ASX Announcement are highlighted in Table 1.</p> <p>Each drillhole was geologically logged and initially scanned with a handheld XRF (pXRF) to determine scandium anomalous zones (+50ppm Sc) for further laboratory analysis.</p> <p>No pXRF data is reported in this ASX Announcement.</p> <p>Samples from air core holes were submitted to ALS Pty Ltd Orange for analysis using ALS method MEXRF12n, which is an equivalent method to SGS' method GO_XRF72C13 and described below; A prepared sample (0.66 g) is fused with a 12:22 lithium tetraborate – lithium metaborate flux which also includes an oxidizing agent (Lithium Nitrate) and then poured into a platinum mould.</p> <p>The resultant disk is in turn analysed by XRF spectrometry. The XRF analysis is determined in conjunction with a loss-on-ignition at 1000°C.</p> <p>The resulting data from both determinations are combined to produce a “total”.</p>
	<p>Include reference to measures taken to ensure sample representativity and the appropriate calibration of any measurement tools or systems used.</p>	<p>The nature of air core sampling means samples should be considered as an indicative rather than precise measure, aimed at defining areas of anomalism. Blank samples and reference standards were inserted into the sample sequence for QA/QC.</p>
	<p>Aspects of the determination of mineralisation that are Material to the Public Report. In cases where ‘industry standard’ work has been done this would be relatively simple (e.g., ‘reverse circulation drilling was used to obtain 1 m samples from which 3 kg was pulverised to produce a 30 g charge for fire</p>	<p>The field collected samples were typically 1.0 to 2.0kg composite samples from a 3m interval from air core drilling.</p> <p>Industry standard preparation and assay conducted at SGS Pty Ltd or ALS Pty Ltd in Orange, NSW, including sample crushing and</p>

For personal use only

Criteria	JORC Code explanation	Commentary
	assay'). In other cases, more explanation may be required, such as where there is coarse gold that has inherent sampling problems. Unusual commodities or mineralisation types (e.g., submarine nodules) may warrant disclosure of detailed information.	pulverising prior to subsampling for an assay sample. 25 g of pulverized sample was utilized for multielement assay via ALS' ME-XRF12n technique.
Drilling techniques	Drill type (e.g., core, reverse circulation, open-hole hammer, rotary air blast, auger, Bangka, sonic, etc) and details (e.g., core diameter, triple or standard tube, depth of diamond tails, face-sampling bit, or other type, whether core is oriented and if so, by what method, etc).	All drillholes reported in this ASX Announcement are air core holes, the specifications of which are included in Table 1.
Drill sample recovery	Method of recording and assessing core and chip sample recoveries and results assessed.	An approximate estimate of total sample quantity was recorded with each 1m interval by comparing volumes within each bucket of sample yielded from the cyclone. A visual estimate of 0, 25, 50, 75, 100, 125% was recorded for each metre.
	Measures taken to maximise sample recovery and ensure representative nature of the samples.	The drillers adjusted penetration and air pressure rates according to ground conditions to optimise recoveries. The cyclone was cleaned regularly, and holes were reamed in between rod changes to reduce contamination.
	Whether a relationship exists between sample recovery and grade and whether sample bias may have occurred due to preferential loss/gain of fine/coarse material.	Due to the reconnaissance nature of the air core drilling, it cannot be determined whether a relationship exists between sample recovery and grade and whether sample bias may have occurred due to preferential loss/gain of fine/coarse material.
Logging	Whether core and chip samples have been geologically and geotechnically logged to a level of detail to support appropriate Mineral Resource estimation, mining studies and metallurgical studies.	Drill samples were geologically and geochemically logged to a level of detail sufficient to support appropriate Mineral Resource estimation. All air core "chip trays" were photographed.
	Whether logging is qualitative or quantitative in nature. Core (or costean, channel, etc) photography.	Geological logging of is largely qualitative by nature.
	The total length and percentage of the relevant intersections logged.	All relevant intersections were logged in full.
Sub-sampling techniques and sample preparation	If core, whether cut or sawn and whether quarter, half or all taken.	N/A as non-core.
	If non-core, whether riffled, tube sampled, rotary split, etc and whether sampled wet or dry.	Air core drilling samples were scooped with PVC pipe from the total output of cuttings that passed through the cyclone on the rig.
	For all sample types, the nature, quality, and appropriateness of the sample preparation technique.	Given the indicative nature of the sample medium (refer to sampling techniques section above) this process is considered appropriate.
	Quality control procedures adopted for all sub-sampling stages to maximise representivity of samples.	All sampling equipment etc were cleaned regularly during the sample preparation.
	Measures taken to ensure that the sampling is representative of the in-situ material collected, including for instance results for field duplicate/second-half sampling.	Blanks and standards were inserted in the sample stream before being submitted to the commercial laboratory. No issues have been identified.
	Whether sample sizes are appropriate to the grain size of the material being sampled.	The sample size (typically ~ 2kg) of air core material is considered appropriate to the grainsize of material being sampled.

Criteria	JORC Code explanation	Commentary
Quality of assay data and laboratory tests	The nature, quality and appropriateness of the assaying and laboratory procedures used and whether the technique is considered partial or total.	The methods used by to analyse the air core samples for precious and base metals are industry standard and are considered a total technique.
	For geophysical tools, spectrometers, handheld XRF instruments (pXRF), etc, the parameters used in determining the analysis including instrument make and model, reading times, calibrations factors applied and their derivation, etc.	N/A - no geophysical tools were used or results of using geophysical tools were included in this Announcement.
	Nature of quality control procedures adopted (e.g., standards, blanks, duplicates, external laboratory checks) and whether acceptable levels of accuracy (i.e., lack of bias) and precision have been established.	Certified standards were submitted along half core samples to the laboratory.
Verification of sampling and assaying	The verification of significant intersections by either independent or alternative company personnel.	Significant intersections were verified by the company's Managing Director and Exploration Manager once assay results are received.
	The use of twinned holes.	Not applicable as no twinned holes drilled.
	Documentation of primary data, data entry procedures, data verification, data storage (physical and electronic) protocols.	Sampling data was recorded on field sheets at the sample site. Field data was entered into an excel spreadsheet and saved on Cloud server. Geological logging was recorded directly in LogChief program during drilling and backed up on Cloud server. Assay results once received are typically reported in a digital format suitable for direct loading into a Datashed database with a 3 rd party expert consulting group.
	Discuss any adjustment to assay data.	There has been no adjustment to assay data.
Location of data points	Accuracy and quality of surveys used to locate drill holes (collar and down-hole surveys), trenches, mine workings and other locations used in Mineral Resource estimation.	Sample locations are recorded using handheld Garmin GPS with a nominal accuracy +/- 3m.
	Specification of the grid system used.	GDA94 Zone 55.
	Quality and adequacy of topographic control.	Handheld GPS, which is suitable for the early stage and broad spacing of this exploration.
Data spacing and distribution	Data spacing for reporting of Exploration Results.	The location and spacing of drillholes discussed in this Report are given in Table 1 and various figures of this ASX Announcement.
	Whether the data spacing, and distribution is sufficient to establish the degree of geological and grade continuity appropriate for the Mineral Resource and Ore Reserve estimation procedure(s) and classifications applied.	The data spacing and distribution of drilling referred to in this Announcement, if successful is sufficient to establish the degree of geological and grade continuity appropriate for the Mineral Resource and Ore Reserve estimation procedure(s).
	Whether sample compositing has been applied.	Sample compositing has been applied with each intercept made up of 1 metre samples.
Orientation of data in relation to geological structure	Whether the orientation of sampling achieves unbiased sampling of possible structures and the extent to which this is known, considering the deposit type.	Given the early stage of exploration, it is not yet known if sample spacing, and orientation achieves unbiased results.
	If the relationship between the drilling orientation and the orientation of key mineralised structures is considered to have introduced a sampling bias, this should be	Due to the reconnaissance (early stage) nature of the air core drilling it cannot be determined whether relationship between the drilling orientation and the orientation of key mineralised

For personal use only

Criteria	JORC Code explanation	Commentary
	assessed and reported if material.	structures is considered to have introduced a sampling bias
Sample security	The measures taken to ensure sample security.	Samples double bagged and delivered directly to the laboratory by company personnel.
Audits or reviews	The results of any audits or reviews of sampling techniques and data.	The geological data discussed in this Announcement has been reviewed by senior company personnel including the Exploration Manager and Managing Director with no issues identified.

Section 2 Reporting of Exploration Results

Criteria	JORC Code explanation	Commentary
Mineral tenement and land tenure status	Type, reference name/number, location and ownership including agreements or material issues with third parties such as joint ventures, partnerships, overriding royalties, native title interests, historical sites, wilderness or national park and environmental settings.	Reported results all from Exploration Licence EL EL8935 at Fifield NSW which is wholly - owned by Rimfire Pacific Mining Limited. The tenement forms part of the Company's Avondale Project which is subject to a dispute with the company's former Earn In and Joint Venture partner - Golden Plains Resources Pty Ltd (GPR). <i>Refer to Rimfire's ASX Release dated 26 November 2024.</i> All samples were taken on Private Freehold Land. No Native Title exists. The land is used primarily for grazing and cropping.
	The security of the tenure held at the time of reporting along with any known impediments to obtaining a license to operate in the area.	The tenement is in good standing, and all work is conducted under specific approvals from NSW Department of Planning and Energy, Resources and Geoscience.
Exploration done by other parties	Acknowledgment and appraisal of exploration by other parties.	The Currajong area (also referred to as "Avondale" in historic reports) has been explored as a nickel cobalt PGE opportunity by previous explorers with Helix Resources first undertaking platinum focussed exploration in the late 1980's. Rimfire has explored the locality since early 2000's with an initial focus on platinum and then nickel and cobalt.
Geology	Deposit type, geological setting, and style of mineralisation.	The target area lacks geological exposure; available information indicates the bedrock geology across the project is a dominated by a central body of ultramafic intrusive and stepping out to more felsic units on the margins. The deposit type/style of mineralisation is a flat lying weathered zone developed on top of ultramafic [pyroxenite] rocks hosting anomalous Scandium.
Drill hole Information	A summary of all information material to the understanding of the exploration results including a tabulation of the following information for all Material drill holes: <ul style="list-style-type: none"> easting and northing of the drill hole collar elevation or RL (Reduced Level – elevation above sea level in metres) of the drill hole collar dip and azimuth of the hole down hole length and interception depth. 	All drillhole specifications are included within this ASX Announcement. All collar locations are shown on the figures included with this ASX Announcement.

Criteria	JORC Code explanation	Commentary
	If the exclusion of this information is justified on the basis that the information is not Material and this exclusion does not detract from the understanding of the Report, the Competent Person should clearly explain why this is the case.	Not applicable as no drill hole information has been excluded.
Data aggregation methods	In reporting Exploration Results, weighting averaging techniques, maximum and/or minimum grade truncations (e.g., cutting of high grades) and cut-off grades are usually Material and should be stated.	Each significant intercept reported in this ASX Announcement comprises equal 1 metre length individual samples. A lower cutoff grade of 100ppm Scandium has been applied.
	Where aggregate intercepts incorporate short lengths of high-grade results and longer lengths of low-grade results, the procedure used for such aggregation should be stated and some typical examples of such aggregations should be shown in detail.	All samples were equal 1 metre lengths.
	The assumptions used for any reporting of metal equivalent values should be clearly stated.	No metal equivalent values have been used.
Relationship between mineralisation widths and intercept lengths	These relationships are particularly important in the Reporting of Exploration Results.	Significant intercepts are considered down hole lengths.
	If the geometry of the mineralisation with respect to the drill hole angle is known, its nature should be reported. If it is not known and only the down hole lengths are reported, there should be a clear statement to this effect (e.g., 'down hole length, true width not known').	
Diagrams	Appropriate maps and sections (with scales) and tabulations of intercepts should be included for any significant discovery being reported These should include but not be limited to a plan view of drill hole collar locations and appropriate sectional views.	Included within the ASX Announcement
Balanced reporting	Where comprehensive reporting of all Exploration Results is not practicable, representative reporting of both low and high grades and/or widths should be practiced avoiding misleading reporting of Exploration Results.	All significant intercepts included in this ASX Announcement have been calculated using a 100ppm scandium lower cut-off grade.
Other substantive exploration data	Other exploration data, if meaningful and material, should be reported including (but not limited to): geological observations; geophysical survey results; geochemical survey results; bulk samples – size and method of treatment; metallurgical test results; bulk density, groundwater, geotechnical and rock characteristics; potential deleterious or contaminating substances.	There is currently no other substantive exploration data that is meaningful and material to report.
Further work	The nature and scale of planned further work (e.g., tests for lateral extensions or depth extensions or large-scale step-out drilling).	Planned further is discussed in the document in relation to the exploration results.
	Diagrams clearly highlighting the areas of possible extensions, including the main geological interpretations and future drilling areas, provided this information is not commercially sensitive.	Not applicable at this stage

For personal use only

Competent Persons Declaration

The information in the report to which this statement is attached that relates to Exploration and Resource Results is based on information reviewed and/or compiled by David Hutton who is deemed to be a Competent Person and is a Fellow of The Australasian Institute of Mining and Metallurgy.

Mr Hutton has over 30 years' experience in the minerals industry and is the Managing Director and CEO of Rimfire Pacific Mining. Mr Hutton has sufficient experience that is relevant to the style of mineralisation and type of deposits under consideration and to the activity being undertaken to qualify as a Competent Person as defined in the 2012 Edition of the 'Australasian Code for Reporting of Exploration Results, Mineral Resources and Ore Reserves'.

Mr Hutton consents to the inclusion of the matters based on the information in the form and context in which it appears.

Forward looking statements Disclaimer

This document contains "forward looking statements" as defined or implied in common law and within the meaning of the Corporations Law. Such forward looking statements may include, without limitation, (1) estimates of future capital expenditure; (2) estimates of future cash costs; (3) statements regarding future exploration results and goals.

Where the Company or any of its officers or Directors or representatives expresses an expectation or belief as to future events or results, such expectation or belief is expressed in good faith and the Company or its officers or Directors or representatives, believe to have a reasonable basis for implying such an expectation or belief.

However, forward looking statements are subject to risks, uncertainties, and other factors, which could cause actual results to differ materially from future results expressed, projected, or implied by such forward looking statements. Such risks include, but are not limited to, commodity price fluctuation, currency fluctuation, political and operational risks, governmental regulations and judicial outcomes, financial markets, and availability of key personnel. The Company does not undertake any obligation to publicly release revisions to any "forward looking statement".

For personal use only