



25 June 2025

Desorption Test Results Support IAC Style Mineralisation at Capão Bonito

Highlights

- Results received from over 75% of selected samples submitted to SGS Geosol confirm Capão Bonito exhibits Ionic Adsorption Clay (IAC) characteristics, with strong recoveries under ammonium sulphate leach (AMSUL) testing.
- High MREO (Magnet Rare Earth Oxide) extractions >50% obtained from multiple shallow intercepts, including:
 - 10m @ 66%** extraction MREO, from surface (CBAD-0005)
 - 14m @ 55%** extraction MREO, from surface (CPO-TD0013)
 - 6m @ 65%** extraction MREO, from surface (CPO-TD00023)
 - 10m @ 89%** extraction MREO, from 5m of depth (CPO-TD0039)
 - 7m @ 77%** extraction MREO, from surface (CPO-TD0040)
 - 8m @ 70%** extraction MREO, from surface (CPO-TD0046)
- High-grade intercepts frequently begin at or near surface, a positive attribute often associated with development potential in comparable projects.
- Pending results from the first 4 metres of stand-out hole CPO-TD0039, which already returned 89% MREO recovery over 10m, warrant follow-up drilling.
- Consistent results across multiple holes, despite wide drill spacing, support the interpretation of a laterally extensive REE-bearing zone, subject to confirmation through further drilling
- Recovery results support rapid advancement toward metallurgical optimisation and resource delineation.

CEO Comment

Lucas Stanfield, PVW CEO, commented:

“These results suggest that Capão Bonito exhibits characteristics consistent with an ionic clay REE system, a major milestone for PVW. The outstanding desorption recoveries across multiple intercepts highlight the project’s potential to host high-value, near-surface rare earths in an extraction-friendly form. On the strength of these results, we are accelerating deeper drilling and metallurgical optimisation to further define the opportunity. Capão Bonito continues to emerge as a key pillar in our Brazilian rare earths strategy”



Strategic Importance of IAC Deposits

Initial testwork results suggest that Capão Bonito exhibits characteristics consistent with an Ionic Adsorption Clay (IAC) REE system — a style of mineralisation with significant strategic importance.

IAC deposits are globally significant due to their:

- Low-cost processing (no aggressive chemicals or high-temperature treatment),
- Environmentally benign metallurgy, and
- Critical supply chain importance, particularly for rare earths used in electric vehicles and renewable energy technologies.

These clay-hosted deposits are rare outside China. Capão Bonito is emerging as a potentially significant rare earth discovery, with potential to deliver Magnet Rare Earth Elements (MREEs) essential for the global energy transition.

Metallurgical Testwork Confirms IAC Signature

PVW submitted 426 selected intervals, from 44 auger drill holes of the 56 holes drilled across the project, to SGS Geosol Laboratories in Minas Gerais to test for IAC-style REE mineralisation. The ICM694 diagnostic leach method, using ammonium sulphate solution, is an industry-standard approach for identifying ionic clay systems. The full list with their coordinate location can be found in Appendix A.

To date, 330 results, sourced from 35 holes, have been received. More than a dozen intercepts returned MREO recoveries >50%, a strong indicator of ionic adsorption clay behaviour. Figure 1 visually represents these composite intervals: they are coloured according to their average MREO (Magnetic Rare Earth Oxides) recovery percentage and sized proportionally to the total thickness of the composite. Pending results, which include data from holes CPO-0030 through CPO-0038 and partially from CPO-0039, are indicated by black circles in Figure 1.

Importantly, many of the high-recovery intercepts occur from or near surface, which is a positive characteristic in comparable projects and may be favourable for future development, subject to further studies. The exceptional recovery from hole CPO-TD0039 (89% over 10m) is of particular interest. Results from the first 4m of this hole are still pending and are expected to provide valuable insights into near-surface recovery behaviour. The strength of this intercept justifies follow-up drilling in this zone.

Despite the current wide drill spacing (400m–800m), the consistency of results across multiple drill holes (e.g. CBAD-0005, CPO-TD0013, CPO-TD0023, and CPO-TD0039) supports the interpretation of a laterally continuous mineralised system, which will be further tested with infill drilling.

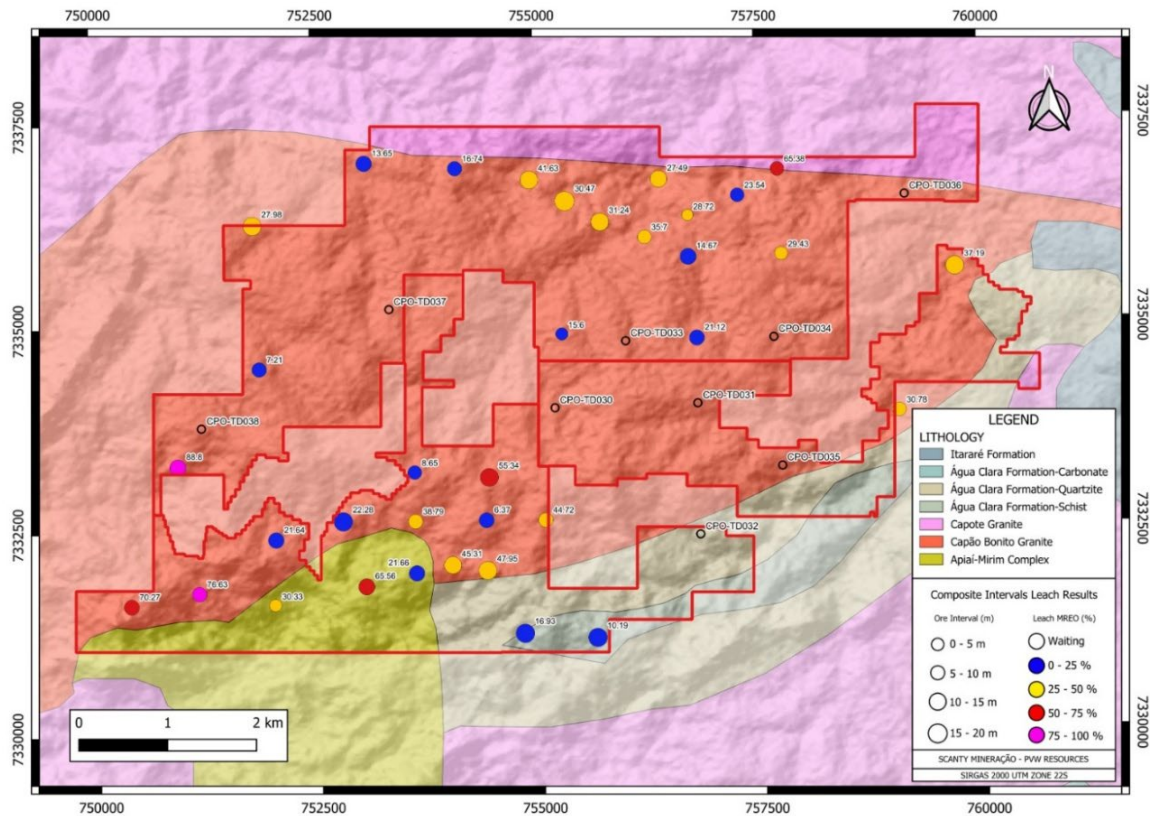


Figure 1: Geological Map of Capão Bonito as a background for composite Intervals of Leaching Test results sized by its length and coloured by its % of MREO recovery

Strategic Importance of Capão Bonito

Shallow mineralisation from surface is a positive attribute and will be further assessed as drilling progresses.

Results are consistent across widely spaced drill holes (400m–800m), including CBAD-0005, CPO-TD0013, and CPO-TD0039.

The strong leach response supports the interpretation of Capão Bonito as an IAC-hosted REE system. These characteristics are typically associated with low-impact extraction methods, pending further study.

These results position Capão Bonito as one of PVW’s most promising exploration targets in Brazil.

Next Steps

- Receive and interpret outstanding leach results from holes CPO-0030 to CPO-0038 and upper interval of CPO-0039.
- Initiate follow-up and deeper drilling in late July to test extensions beneath high-recovery zones.
- Begin 400m-spaced infill drilling across southern Capão Bonito to define geometry and continuity.
- Fast-track mineralogical analysis at CTI CETEM-RJ on 19 priority samples.
- Advance metallurgical optimisation to refine leach parameters and processing strategy.

For personal use only



Technical Overview – SGS ICM694 Protocol

The SGS Geosol Ionic Clay leach (ICM694) is a selective extraction procedure for clay mineral samples, specifically ionic clays, that combines controlled steps of standardized chemical leaching with instrumental analysis by ICP-MS.

Initially, each sample sent to SGS is homogenized and split. One aliquot is submitted for chemical analysis to determine the total (or "head") grades by ICP-MS (ICPMS95A), while the corresponding aliquot is reserved for future metallurgical testwork.

Following the release of the initial chemical assay results, a 40-gram portion of the selected intervals is subjected to a leach test. This procedure involves agitating the sample with a 0.5 mol/L ammonium sulphate solution at ambient temperature for a period of 30 minutes. Upon completion of this period, the resulting pulp is filtered, and the solid residue is washed. Subsequently, an aliquot of the filtered solution (leachate) is collected and analyzed by ICP-MS to quantify the concentration of the leached elements.

To date, 330 results returned from the 426 samples submitted have been reported with a full list of those showing strong ionic clay desorption responses (>50% MREE extractions) shown in Appendix B.

Among the results received up to now, some of notable high rate of extractions (>50% ratio from MREO_leached / MREO_head) intercepts are illustrated in the following tables:

Table 1: Hole CBAD-0005 with 10m interval with an average MREO recovery of 66%, from surface:

HOLE	DEPTH	CIA*	TREO (mg/kg)	MREO / TREO (%)	MREO (mg/kg) Feed	MREO (%)	Pr ₆ O ₁₁ (mg/kg) ICPMS95A	Pr ₆ O ₁₁ (%)	Nd ₂ O ₃ (mg/kg) ICPMS95A	Nd ₂ O ₃ (%)	Tb ₄ O ₇ (mg/kg) ICPMS95A	Tb ₄ O ₇ (%)	Dy ₂ O ₃ (mg/kg) ICPMS95A	Dy ₂ O ₃ (%)
CB-AD-05	1.0	98%	820	21%	174	52%	35	55%	121	54%	2	42%	16	32%
CB-AD-05	2.0	96%	1115	23%	261	53%	52	55%	180	55%	4	42%	25	35%
CB-AD-05	3.0	93%	1515	27%	412	52%	83	55%	290	54%	5	42%	33	36%
CB-AD-05	4.0	89%	1527	30%	464	64%	98	63%	327	66%	6	54%	33	49%
CB-AD-05	5.0	86%	1612	35%	557	65%	114	66%	395	67%	7	59%	41	52%
CB-AD-05	6.0	85%	1858	34%	625	75%	126	77%	440	76%	8	71%	50	63%
CB-AD-05	7.0	80%	1742	33%	570	63%	115	64%	395	64%	9	62%	52	56%
CB-AD-05	8.0	79%	1497	31%	470	60%	92	61%	324	60%	8	63%	47	56%
CB-AD-05	9.0	81%	1485	29%	433	71%	83	72%	290	71%	8	74%	51	67%
CB-AD-05	10.0	76%	1421	27%	380	100%	74	100%	249	100%	8	100%	49	99%

*CIA: Chemical Index of Alteration calculated from the concentrations of major oxides (Al₂O₃, CaO, Na₂O, K₂O) to estimate the degree of chemical weathering of the rocks.

TREO (mg/kg): The sum of the concentrations of all rare earth oxides measured in the sample (head/total analysis).

MREO (mg/kg): Total concentration of Magnetic Rare Earth Oxides (Pr₆O₁₁, Nd₂O₃, Tb₄O₇, and Dy₂O₃) in the total analysis.

MREO / TREO (%): Proportion of MREO relative to TREO.

MREO (%): Extraction of MREO calculated as: (MREO_leached / MREO).

Pr₆O₁₁ (%): Extraction of Praseodymium Oxide (Pr₆O₁₁) by leaching, calculated as: (Pr₆O₁₁_leached / Pr₆O₁₁).

Nd₂O₃ (%): Extraction of Neodymium Oxide (Nd₂O₃) by leaching, calculated as: (Nd₂O₃_AD / Nd₂O₃).

Tb₄O₇ (%): Extraction of Terbium Oxide (Tb₄O₇) by leaching, calculated as: (Tb₄O₇_AD / Tb₄O₇).

Dy₂O₃ (%): Extraction of Dysprosium Oxide (Dy₂O₃) by leaching, calculated as: (Dy₂O₃_AD / Dy₂O₃).



Table 2: Hole CPO-TD0013 has a 14m interval with an average MREO recovery of 55%, from surface or 8m interval with an average MREO recovery of 67% from 7m deep:

HOLE	SAMPLEID	DEPTH	CIA*	TREO (mg/kg)	MREO/TREO (%)	MREO (mg/kg)	MREO (%)	Pr ₆ O ₁₁ (mg/kg) ICPMS95A	Pr ₆ O ₁₁ (%)	Nd ₁₀₀ (mg/kg) ICPMS95A	Nd ₁₀₀ (%)	Tb ₄ O ₇ (mg/kg) ICPMS95A	Tb ₄ O ₇ (%)	Dy ₁₀₀ (mg/kg) ICPMS95A	Dy ₁₀₀ (%)
CPO-TD013	CPO-00153	1.0	98%	354	10%	36	29%	6	36%	20	36%	1	17%	10	11%
CPO-TD013	CPO-00154	2.0	97%	288	13%	37	19%	6	22%	20	23%	1	11%	10	9%
CPO-TD013	CPO-00155	3.0	97%	252	18%	45	32%	7	35%	26	39%	1	21%	11	16%
CPO-TD013	CPO-00156	4.0	97%	475	16%	74	46%	12	50%	44	53%	2	28%	16	23%
CPO-TD013	CPO-00157	5.0	96%	422	22%	92	86%	16	91%	58	96%	2	61%	16	47%
CPO-TD013	CPO-00158	6.0	95%	427	24%	103	27%	18	28%	66	29%	2	27%	16	18%
CPO-TD013	CPO-00159	7.0	92%	566	27%	153	71%	27	72%	99	75%	3	67%	23	57%
CPO-TD013	CPO-00160	8.0	89%	653	29%	187	79%	33	79%	119	84%	5	71%	31	63%
CPO-TD013	CPO-00163	9.0	86%	899	25%	224	62%	39	62%	141	65%	6	56%	38	52%
CPO-TD013	CPO-00164	10.0	80%	733	28%	205	52%	36	52%	129	55%	6	48%	35	45%
CPO-TD013	CPO-00165	11.0	81%	689	27%	188	68%	32	68%	116	71%	5	64%	34	59%
CPO-TD013	CPO-00166	12.0	76%	786	26%	202	66%	34	65%	122	70%	6	63%	39	57%
CPO-TD013	CPO-00167	13.0	76%	913	24%	223	64%	36	64%	134	67%	7	63%	46	58%
CPO-TD013	CPO-00168	14.0	73%	802	20%	164	73%	27	72%	96	77%	5	70%	36	63%

Table 3: CPO-TD00023 with 6m interval with an average MREO recovery of 65%, from surface:

HOLE	DEPTH	colour	CIA*	TREO (mg/kg)	MREO/TREO (%)	MREO (mg/kg) Feed	MREO (%)	Pr ₆ O ₁₁ (mg/kg) ICPMS95A	Pr ₆ O ₁₁ (%)	Nd ₁₀₀ (mg/kg) ICPMS95A	Nd ₁₀₀ (%)	Tb ₄ O ₇ (mg/kg) ICPMS95A	Tb ₄ O ₇ (%)	Dy ₁₀₀ (mg/kg) ICPMS95A	Dy ₁₀₀ (%)
CPO-TD023	1.0		94%	1045	24%	246	53%	47	56%	163	54%	5	49%	30	45%
CPO-TD023	2.0		91%	1019	20%	207	68%	38	71%	134	69%	5	64%	31	60%
CPO-TD023	3.0		91%	708	20%	138	70%	25	73%	86	73%	4	66%	24	61%
CPO-TD023	4.0		85%	848	21%	177	64%	31	66%	109	66%	5	63%	32	58%
CPO-TD023	5.0		85%	873	20%	175	69%	31	70%	109	71%	5	68%	31	62%
CPO-TD023	6.0		77%	967	20%	190	67%	34	68%	119	70%	5	66%	33	59%

Table 4: CPO-TD0039 with 10m interval with an average MREO recovery of 89%, pending four intervals results yet

HOLE	DEPTH	colour	CIA*	TREO (mg/kg)	MREO/TREO (%)	MREO (mg/kg) Feed	MREO (%)	Pr ₆ O ₁₁ (mg/kg) ICPMS95A	Pr ₆ O ₁₁ (%)	Nd ₁₀₀ (mg/kg) ICPMS95A	Nd ₁₀₀ (%)	Tb ₄ O ₇ (mg/kg) ICPMS95A	Tb ₄ O ₇ (%)	Dy ₁₀₀ (mg/kg) ICPMS95A	Dy ₁₀₀ (%)
CPO-TD039	1.0		90%	1395	18%	247		53		181		2		11	
CPO-TD039	2.0		86%	1450	31%	444		96		326		3		19	
CPO-TD039	3.0		87%	2354	30%	703		153		515		6		29	
CPO-TD039	4.0		81%	5661	35%	1970		436		1430		16		88	
CPO-TD039	5.0		80%	3824	38%	1435	98%	320	100%	1037	90%	12	100%	66	100%
CPO-TD039	6.0		76%	2508	33%	829	100%	184	100%	594	100%	7	90%	43	82%
CPO-TD039	7.0		74%	2347	34%	789	89%	175	88%	565	91%	7	78%	42	73%
CPO-TD039	8.0		73%	2421	32%	786	94%	174	93%	561	95%	8	87%	43	82%
CPO-TD039	9.0		71%	2178	31%	671	95%	151	92%	478	96%	6	94%	36	87%
CPO-TD039	10.0		71%	1989	31%	626	91%	138	90%	445	93%	7	86%	37	80%
CPO-TD039	11.0		70%	2029	31%	621	83%	137	81%	438	85%	7	76%	40	72%
CPO-TD039	12.0		70%	2004	31%	616	89%	135	88%	433	90%	7	86%	40	80%
CPO-TD039	13.0		70%	2057	31%	629	74%	137	73%	441	75%	8	66%	44	62%
CPO-TD039	14.0		69%	1942	30%	586	70%	127	69%	407	72%	8	62%	44	58%



Table 5: CPO-TD0040 with 7m interval with an average MREO recovery of 77%, from surface.

HOLE	DEPTH	colour	CIA*	TREO (mg/kg)	MREO/TREO (%)	MREO (mg/kg) Feed	MREO (%)	Pr ₆ O ₁₁ (mg/kg) ICPMS95A	Pr ₆ O ₁₁ (%)	Nd ₂ O ₃ (mg/kg) ICPMS95A	Nd ₂ O ₃ (%)	Tb ₄ O ₇ (mg/kg) ICPMS95A	Tb ₄ O ₇ (%)	Dy ₂ O ₃ (mg/kg) ICPMS95A	Dy ₂ O ₃ (%)
CPO-TD040	1.0	Brown	72%	1149	28%	323	83%	71	82%	227	84%	4	78%	21	70%
CPO-TD040	2.0		70%	1378	27%	372	92%	80	89%	255	93%	6	97%	32	89%
CPO-TD040	3.0		69%	1245	25%	309	82%	65	80%	207	81%	5	96%	31	88%
CPO-TD040	4.0		69%	1360	23%	318	87%	65	83%	207	85%	7	100%	39	95%
CPO-TD040	5.0		69%	1238	23%	284	74%	57	70%	184	72%	7	90%	37	90%
CPO-TD040	6.0		68%	1247	22%	274	76%	54	70%	175	72%	7	100%	38	98%

Table 6: CPO-TD0046 with 8m interval with an average MREO recovery of 70%, from surface.

HOLE	DEPTH	colour	CIA*	TREO (mg/kg)	MREO/TREO (%)	MREO (mg/kg) Feed	MREO (%)	Pr ₆ O ₁₁ (mg/kg) ICPMS95A	Pr ₆ O ₁₁ (%)	Nd ₂ O ₃ (mg/kg) ICPMS95A	Nd ₂ O ₃ (%)	Tb ₄ O ₇ (mg/kg) ICPMS95A	Tb ₄ O ₇ (%)	Dy ₂ O ₃ (mg/kg) ICPMS95A	Dy ₂ O ₃ (%)
CPO-TD046	3.0	Brown	93%	676	9%	64	74%	14	76%	46	76%	1	57%	4	42%
CPO-TD046	4.0		88%	1536	17%	254	89%	55	92%	184	91%	2	70%	13	63%
CPO-TD046	5.0		84%	2086	33%	686	81%	151	81%	499	81%	6	69%	30	67%
CPO-TD046	6.0		77%	1492	33%	485	70%	106	71%	351	71%	4	56%	25	53%
CPO-TD046	7.0		73%	1454	30%	431	75%	92	79%	310	77%	4	56%	25	52%
CPO-TD046	8.0		74%	1859	28%	520	80%	111	83%	374	81%	5	61%	30	56%

For personal use only



Table 7: List of samples with MREO% > 50% ratio from MREO_LEACHED / MREO_FEED

HOLE	DEPTH	TREO (mg/kg)	MREO (mg/kg) Feed	MREO (%)	Pr ₆ O ₁₁ (mg/kg) ICPMS95A	Pr ₆ O ₁₁ (%)	Nd ₂ O ₃ (mg/kg) ICPMS95A	Nd ₂ O ₃ (%)	Tb ₄ O ₇ (mg/kg) ICPMS95A	Tb ₄ O ₇ (%)	Dy ₂ O ₃ (mg/kg) ICPMS95A	Dy ₂ O ₃ (%)
CB-AD-02	6.0	936	159	52%	31	55%	113	54%	2	41%	13	32%
CB-AD-05	1.0	820	174	52%	35	55%	121	54%	2	42%	16	32%
CB-AD-05	2.0	1115	261	53%	52	55%	180	55%	4	42%	25	35%
CB-AD-05	3.0	1515	412	52%	83	55%	290	54%	5	42%	33	36%
CB-AD-05	4.0	1527	464	64%	98	63%	327	66%	6	54%	33	49%
CB-AD-05	5.0	1612	557	65%	114	66%	395	67%	7	59%	41	52%
CB-AD-05	6.0	1858	625	75%	126	77%	440	76%	8	71%	50	63%
CB-AD-05	7.0	1742	570	63%	115	64%	395	64%	9	62%	52	56%
CB-AD-05	8.0	1497	470	60%	92	61%	324	60%	8	63%	47	56%
CB-AD-05	9.0	1485	433	71%	83	72%	290	71%	8	74%	51	67%
CB-AD-05	10.0	1421	380	100%	74	100%	249	100%	8	100%	49	99%
CPO-TD001	7.0	878	253	52%	59	50%	181	54%	2	40%	11	34%
CPO-TD001	9.0	1407	536	58%	118	58%	384	59%	5	39%	29	35%
CPO-TD001	10.0	1127	426	74%	94	75%	308	75%	4	54%	20	50%
CPO-TD001	11.0	1300	475	89%	107	87%	344	91%	4	70%	20	68%
CPO-TD001	12.0	1231	489	87%	110	84%	355	89%	4	70%	20	64%
CPO-TD005	5.0	933	225	63%	46	61%	154	65%	4	55%	22	48%
CPO-TD005	6.0	1188	281	62%	55	61%	190	66%	5	52%	31	45%
CPO-TD006	16.0	479	148	50%	30	47%	104	53%	2	38%	13	35%
CPO-TD006	17.0	615	205	53%	41	49%	144	56%	3	49%	16	45%
CPO-TD007	1.0	280	13	75%	2	83%	8	88%	0	35%	2	24%
CPO-TD007	10.0	453	86	78%	18	80%	61	82%	1	49%	6	35%
CPO-TD007	11.0	513	101	70%	21	69%	73	74%	1	47%	6	39%
CPO-TD007	12.0	585	136	61%	29	60%	99	64%	1	47%	8	36%
CPO-TD009	15.0	651	177	61%	32	60%	120	63%	4	55%	21	53%
CPO-TD009	17.0	568	169	60%	28	62%	117	59%	3	77%	21	59%
CPO-TD013	5.0	422	92	86%	16	91%	58	96%	2	61%	16	47%
CPO-TD013	7.0	566	153	71%	27	72%	99	75%	3	67%	23	57%
CPO-TD013	8.0	653	187	79%	33	79%	119	84%	5	71%	31	63%
CPO-TD013	9.0	899	224	62%	39	62%	141	65%	6	56%	38	52%
CPO-TD013	10.0	733	205	52%	36	52%	129	55%	6	48%	35	45%
CPO-TD013	11.0	689	188	68%	32	68%	116	71%	5	64%	34	59%
CPO-TD013	12.0	786	202	66%	34	65%	122	70%	6	63%	39	57%
CPO-TD013	13.0	913	223	64%	36	64%	134	67%	7	63%	46	58%
CPO-TD013	14.0	802	164	73%	27	72%	96	77%	5	70%	36	63%
CPO-TD018	2.0	1442	378	54%	75	55%	271	56%	5	45%	27	41%
CPO-TD018	3.0	2117	688	64%	136	64%	495	64%	9	61%	48	57%
CPO-TD018	4.0	2101	668	64%	130	66%	475	64%	10	62%	54	58%
CPO-TD018	5.0	2320	759	56%	144	57%	533	56%	13	52%	69	51%
CPO-TD018	7.0	1463	436	58%	83	58%	301	58%	8	59%	44	57%
CPO-TD018	8.0	1176	317	52%	61	49%	218	52%	6	59%	33	54%



HOLE	DEPTH	TREO (mg/kg)	MREO (mg/kg) Feed	MREO (%)	Pr ₆ O ₁₁ (mg/kg) ICPMS95A	Pr ₆ O ₁₁ (%)	Nd ₂ O ₃ (mg/kg) ICPMS95A	Nd ₂ O ₃ (%)	Tb ₄ O ₇ (mg/kg) ICPMS95A	Tb ₄ O ₇ (%)	Dy ₂ O ₃ (mg/kg) ICPMS95A	Dy ₂ O ₃ (%)
CPO-TD023	1.0	1045	246	53%	47	56%	163	54%	5	49%	30	45%
CPO-TD023	2.0	1019	207	68%	38	71%	134	69%	5	64%	31	60%
CPO-TD023	3.0	708	138	70%	25	73%	86	73%	4	66%	24	61%
CPO-TD023	4.0	848	177	64%	31	66%	109	66%	5	63%	32	58%
CPO-TD023	5.0	873	175	69%	31	70%	109	71%	5	68%	31	62%
CPO-TD023	6.0	967	190	67%	34	68%	119	70%	5	66%	33	59%
CPO-TD026	2.0	1145	286	55%	49	60%	184	58%	8	45%	45	42%
CPO-TD039	5.0	3824	1435	98%	320	100%	1037	90%	12	100%	66	100%
CPO-TD039	6.0	2508	829	100%	184	100%	594	100%	7	90%	43	82%
CPO-TD039	7.0	2347	789	89%	175	88%	565	91%	7	78%	42	73%
CPO-TD039	8.0	2421	786	94%	174	93%	561	95%	8	87%	43	82%
CPO-TD039	9.0	2178	671	95%	151	92%	478	96%	6	94%	36	87%
CPO-TD039	10.0	1989	626	91%	138	90%	445	93%	7	86%	37	80%
CPO-TD039	11.0	2029	621	83%	137	81%	438	85%	7	76%	40	72%
CPO-TD039	12.0	2004	616	89%	135	88%	433	90%	7	86%	40	80%
CPO-TD039	13.0	2057	629	74%	137	73%	441	75%	8	66%	44	62%
CPO-TD039	14.0	1942	586	70%	127	69%	407	72%	8	62%	44	58%
CPO-TD040	1.0	1149	323	83%	71	82%	227	84%	4	78%	21	70%
CPO-TD040	2.0	1378	372	92%	80	89%	255	93%	6	97%	32	89%
CPO-TD040	3.0	1245	309	82%	65	80%	207	81%	5	96%	31	88%
CPO-TD040	4.0	1360	318	87%	65	83%	207	85%	7	100%	39	95%
CPO-TD040	5.0	1238	284	74%	57	70%	184	72%	7	90%	37	90%
CPO-TD040	6.0	1247	274	76%	54	70%	175	72%	7	100%	38	98%
CPO-TD041	11.0	676	104	57%	18	67%	62	69%	3	29%	21	17%
CPO-TD041	12.0	663	139	71%	28	72%	95	75%	2	60%	14	47%
CPO-TD041	13.0	908	242	58%	48	58%	167	60%	4	52%	23	43%
CPO-TD043	4.0	857	207	56%	41	56%	141	55%	4	63%	21	59%
CPO-TD043	5.0	934	202	72%	39	72%	136	72%	4	79%	23	73%
CPO-TD043	6.0	834	174	72%	34	70%	118	72%	3	79%	18	77%
CPO-TD045	3.0	434	68	50%	13	54%	47	54%	1	28%	6	20%
CPO-TD045	4.0	492	89	55%	18	56%	63	57%	1	39%	6	29%
CPO-TD046	3.0	676	64	74%	14	76%	46	76%	1	57%	4	42%
CPO-TD046	4.0	1536	254	89%	55	92%	184	91%	2	70%	13	63%
CPO-TD046	5.0	2086	686	81%	151	81%	499	81%	6	69%	30	67%
CPO-TD046	6.0	1492	485	70%	106	71%	351	71%	4	56%	25	53%
CPO-TD046	7.0	1454	431	75%	92	79%	310	77%	4	56%	25	52%
CPO-TD046	8.0	1859	520	80%	111	83%	374	81%	5	61%	30	56%
CPO-TD048	2.0	808	209	53%	41	54%	149	54%	3	46%	17	41%
CPO-TD048	3.0	1103	313	53%	62	53%	221	53%	5	53%	25	52%
CPO-TD048	4.0	1113	299	79%	59	80%	210	81%	5	73%	25	68%
CPO-TD048	5.0	885	232	60%	45	59%	161	60%	4	65%	22	62%



Competent Person's Statement

The information summarised in this document relating to metallurgical results is based on information provided to Mr Gavin Beer, a professional metallurgist with 35 years of international experience across the metallurgical, mineral and chemical processing industries spanning Australia, Asia, South America and Europe. He is a Member and Chartered Professional of the Australian Institute of Mining and Metallurgy (AusIMM), and is formally recognised as both a Competent Person under the JORC Code (2012) and a Qualified Person under NI 43-101 for his metallurgical expertise. Mr Beer is contracting to PVW Resources. Mr Beer has sufficient experience which is relevant to the style of mineralisation and type of deposit under consideration and to the activity which he is undertaking to qualify as a Competent Person as defined in the 2012 Edition of the 'Australasian Code for Reporting of Exploration results, Mineral Resources and Ore Reserves' (the JORC Code). Mr Beer consents to the inclusion of this information in the form and context in which it appears.

Authorisation

This announcement has been authorised for release by the Board of PVW Resources Limited.

For further information, please contact:

Lucas Stanfield

Chief Executive Officer

+61 451 007 006

lucas.stanfield@pvwresources.com.au

Joe Graziano

Company Secretary

+61 411 649 551

joe@pathwayscorporate.com.au

For personal use only



About PVW Resources

PVW Resources is an emerging exploration company focused on unlocking value from both rare earth elements (REE) and gold in Brazil — a jurisdiction with favourable geology, infrastructure, and regulatory conditions. The company’s primary focus is on developing high-potential Ion Adsorption Clay (IAC) REE projects, which are critical to the global clean energy transition.

In tandem, PVW is advancing strategic precious metals opportunities in Brazil that align with its technical expertise and established in-country presence. This dual-commodity strategy provides exposure to two globally significant markets — REEs powering the technologies of tomorrow, and gold offering a resilient store of value — while leveraging shared infrastructure and personnel.

As part of a broader portfolio optimisation strategy, PVW is evaluating pathways to divest or restructure its Australian gold assets, ensuring focused capital deployment. With a disciplined approach and seasoned team, PVW is positioned to deliver shareholder value through targeted discovery and development in one of the world’s most prospective regions.

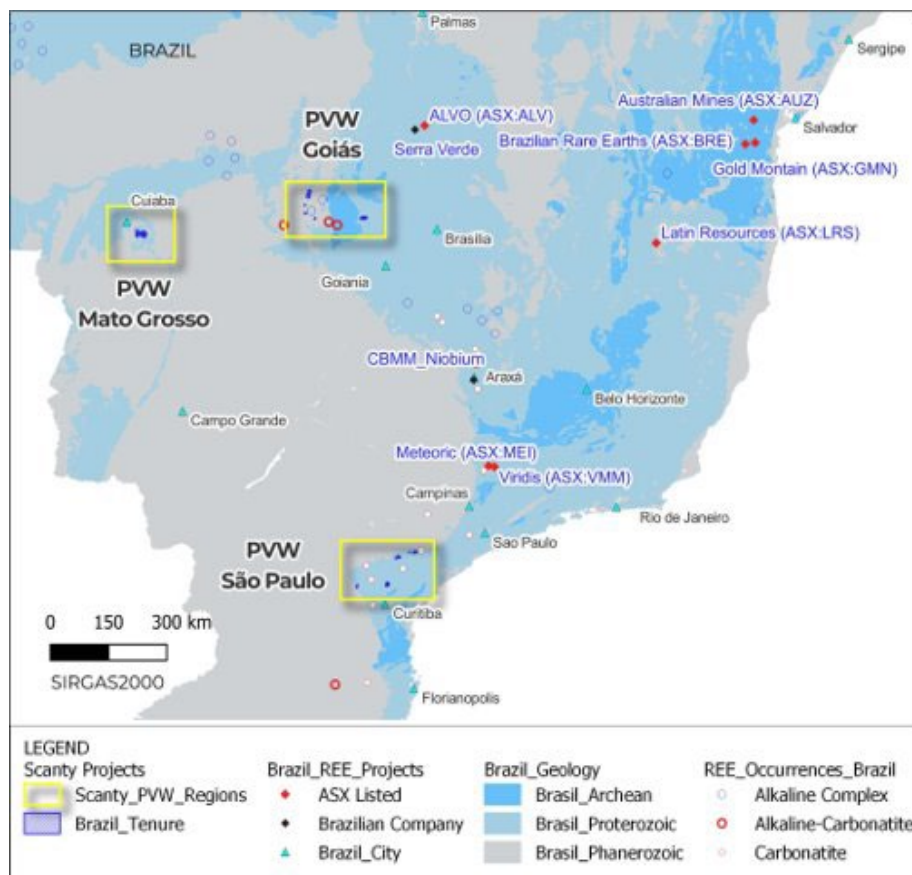


Figure 2: PVW's Projects in Brazil

For personal use only



PVW Resources Team - Australia

Lucas Stanfield - Chief Executive Officer



- Lucas is a highly experienced mining executive with over 20 years in the development of gold, rare earth, and critical mineral projects across Australia, Africa, and South America. He has held senior leadership roles including CEO, COO, and Project Director, with a proven track record of taking greenfield projects through to feasibility, permitting, and development decisions.
- Lucas played a key role in advancing the Ngualla Rare Earth Project to one of the world's most advanced undeveloped rare earth assets, including pilot plant development and securing cornerstone investment. He also led the Nyanzaga Gold Project through a major strategic reset, feasibility studies, and successful government negotiations in Tanzania.

Karl Weber - Exploration Manager



- Karl has over 25 years of experience within a diverse career in gold and base metal exploration within Australia and Internationally.
- He has held technical and management positions with Mines and Resources Australia (COGEMA), Harmony Gold, Venturex Resources (Brazil) and Gascoyne Resources.
- His roles include geologist, manager and country manager, in many successful teams taking projects from discovery through resource definition to mining. Projects include White Foil and Frog's Leg.

Gavin Beer - Consultant Metallurgist



- Gavin is a qualified metallurgist with over 35 years of international experience across the metallurgical, mineral and chemical processing industries spanning Australia, Asia, South America and Europe
- He is a member and chartered professional of the Australian Institute of Mining and Metallurgy (AusIMM) and is formally recognised as a competent person under the JORC Code (2012) and a Qualified Person under NI 43-101 for his metallurgical expertise
- He is the founder of Met-Chem Consulting, a specialist consultancy dedicated to the development and optimisation of metallurgical flowsheets for rare earths projects.

For personal use only



Colin McCavana - Non-Executive Director



- Colin has over 40 years' experience in the mining and resources sector and has extensive experience in exploration, project development, capital raising, financing, operations.
- He has had extensive involvement in rare earths and gold exploration and development including the successful development of several CIP and heap leach projects in WA.
- Colin is also Chairman of Reward Minerals Limited.
- Colin was the founding director of Northern Minerals and PVW Resources and oversaw the development of the Browns Range REE Project.

Joe Graziano - Non-Executive Director and Company Secretary



- Joe has over 30 years' experience providing a wide range of business, financial and taxation advice.
- Over the past 7 years he has been focused on Corporate Advisory and strategic planning with Corporations and Private Businesses.
- He has extensive experience in Capital Raisings, ASX compliance and regulatory requirements.
- Joe is currently a director of Pathways Corporate Pty Ltd a specialised Corporate Advisory business and sits on several Boards of ASX Listed Companies.
- He also provides CFO and Company Secretarial services as part of his service offering.

For personal use only



PVW Resources Team – Brazil

Luis Azevedo - Non-Executive Director



- Luis holds both a BSc in Geology and a Law Degree, with extensive experience in the resource industry and specialisation in the Brazilian Mining Code.
- Luis is a founding partner of FFA Legal Ltd, focusing on assisting natural resource companies. Previously he worked with major firms like Western Mining Corp. and Barrick Gold Corp., initiating and selling projects that became operational mines.
- Luis also co-founded Avanco Resources Ltd, leading its successful acquisition by Oz Minerals in 2018.
- He currently serves on the boards of Serabi Gold PLC, Harvest Minerals Ltd, and Jangada Mines PLC, and is actively involved in advocating for the Brazilian mining sector through associations and industry councils.

Celeste Queiroz - Country Manager – Brazil



- Celeste Queiroz is PVW Resources' Country Manager, Brazil, leveraging her extensive 28-year background in geological exploration and mineral resource assessment.
- With a BSc in Geology and a post-graduate degree in Geostatistics, she honed her skills at Vale S.A., where she advanced from field geologist to overseeing specialised teams in geology, QAQC, and mineral resource estimation.
- Celeste is dedicated to upholding international standards and best practices, serving on the Board of Directors at CBRR, being a Fellow of AUSIMM and is Risk Institute C31000 Certified.



Appendix 1

COLLAR TABLE OF HOLES REPORTED IN THIS RELEASE.

Hole ID	UTM E	UTM N	RL (m)	Depth (m)	Date
CB-AD-01	755620	7331141	917	16.0	25/03/2024
CB-AD-02	755739	7336230	825	13.0	27/03/2024
CB-AD-03	755283	7334861	873	14.5	01/04/2024
CB-AD-04	754106	7336914	851	13.0	03/04/2024
CB-AD-05	753030	7331810	859	11.0	05/04/2024
CPO-TD001	754005	7332058	884	13.0	29/10/2024
CPO-TD004	754394	7332602	925	14.0	01/11/2024
CPO-TD005	753593	7332600	884	8.3	05/11/2024
CPO-TD006	753598	7331965	907	18.0	08/11/2024
CPO-TD007	754396	7331986	885	14.5	12/11/2024
CPO-TD008	754806	7331209	878	16.0	13/11/2024
CPO-TD009	755061	7332593	908	18.0	15/11/2024
CPO-TD010	752780	7332611	874	16.0	18/11/2024
CPO-TD011	752020	7332395	875	9.7	19/11/2024
CPO-TD012	753595	7333201	929	14.0	20/11/2024
CPO-TD013	754433	7333127	913	15.0	21/11/2024
CPO-TD017	756720	7335796	820	11.0	30/11/2029
CPO-TD018	754943	7336765	793	15.0	04/12/2024
CPO-TD022	757769	7335818	814	15.0	12/12/2024
CPO-TD023	757740	7336856	738	7.0	12/12/2024
CPO-TD024	753085	7336995	843	14.0	13/12/2024
CPO-TD025	757286	7336541	765	6.8	12/14/2024
CPO-TD026	756402	7336752	721	12.0	12/16/2024
CPO-TD027	756802	7334800	721	14.0	12/13/2024
CPO-TD039	750927	7333303	872	15.0	06/02/2025
CPO-TD040	751146	7331748	830	8.0	07/02/2025
CPO-TD041	751815	7336249	867	15.0	11/02/2025
CPO-TD042	758451	7336613	715	10.0	12/02/2025
CPO-TD043	759721	7335637	743	15.0	13/02/2025
CPO-TD044	751864	7334489	928	18.0	18/02/2025
CPO-TD045	759067	7333884	759	7.0	11/03/2025
CPO-TD046	750379	7331601	903	9.0	13/03/2025
CPO-TD047	752000	7331599	762	5.0	13/03/2025
CPO-TD048	755339	7336498	811	18.0	19/03/2025
CPO-TD049	756232	7336045	818	7.0	19/03/2025
CPO-TD050	756722	7336304	792	4.0	19/03/2025

For personal use only



Appendix 2

LIST OF REE RESULTS RECEIVED FROM SAMPLES SUBMITTED TO SGS ICM694 PROTOCOL

Sample	Y mg/kg	La mg/kg	Ce mg/kg	Pr mg/kg	Nd mg/kg	Tb mg/kg	Dy mg/kg	Sm mg/kg	Eu mg/kg	Gd mg/kg	Ho mg/kg	Er mg/kg	Tm mg/kg	Yb mg/kg	Lu mg/kg
CBAD-002	1.43	11.50	9.61	2.52	7.90	0.09	0.38	1.12	0.10	0.67	0.10	0.16	0.02	<0.4	<0.04
CBAD-003	2.90	18.35	7.81	3.88	12.30	0.17	0.79	2.04	0.18	1.27	0.14	0.29	0.03	<0.4	<0.04
CBAD-004	2.73	14.33	9.51	3.22	10.10	0.16	0.73	1.65	0.14	1.19	0.13	0.26	0.03	<0.4	<0.04
CBAD-005	1.75	8.06	8.51	2.04	6.60	0.10	0.46	1.02	0.09	0.68	0.08	0.17	0.02	<0.4	<0.04
CBAD-006	1.46	9.05	9.67	2.32	7.60	0.09	0.43	1.13	0.09	0.68	0.07	0.15	0.02	<0.4	<0.04
CBAD-007	1.01	7.35	7.31	1.82	5.90	<0.08	0.29	0.84	0.07	0.49	0.05	0.09	<0.012	<0.4	<0.04
CBAD-008	1.02	7.58	7.53	1.88	6.10	<0.08	0.29	0.89	0.07	0.50	0.05	0.11	0.01	<0.4	<0.04
CBAD-009	1.11	8.17	8.74	2.02	6.40	<0.08	0.29	0.93	0.08	0.48	0.05	0.11	0.01	<0.4	<0.04
CBAD-010	1.17	9.53	8.36	2.38	7.80	<0.08	0.33	1.10	0.10	0.59	0.05	0.12	0.01	<0.4	<0.04
CBAD-011	1.64	12.62	9.11	3.28	11.00	0.10	0.46	1.63	0.13	0.87	0.08	0.17	0.02	<0.4	<0.04
CBAD-012	2.27	17.02	13.00	4.32	14.60	0.14	0.62	2.16	0.19	1.23	0.11	0.24	0.03	<0.4	<0.04
CBAD-013	3.99	28.70	21.47	7.31	24.70	0.24	1.08	3.77	0.32	2.02	0.18	0.43	0.06	<0.4	0.04
CBAD-014	4.95	32.85	24.27	8.15	27.40	0.28	1.34	4.37	0.40	2.49	0.22	0.52	0.07	<0.4	0.05
CBAD-015	4.72	29.52	16.98	7.54	25.80	0.28	1.26	4.10	0.35	2.27	0.21	0.48	0.07	<0.4	0.05
CBAD-016	4.74	10.05	29.72	2.72	9.40	0.16	0.75	1.73	0.11	1.10	0.15	0.39	0.06	<0.4	0.05
CBAD-017	4.04	11.83	24.61	3.74	13.40	0.19	0.92	2.60	0.13	1.44	0.17	0.46	0.06	<0.4	0.05
CBAD-018	5.41	17.02	29.93	5.37	19.40	0.27	1.31	3.67	0.20	2.05	0.23	0.57	0.08	0.50	0.07
CBAD-019	5.82	21.26	48.64	6.91	24.10	0.33	1.56	4.53	0.25	2.60	0.26	0.65	0.09	0.50	0.07
CBAD-020	8.47	30.34	32.75	10.36	36.60	0.50	2.33	7.02	0.38	3.98	0.38	0.92	0.12	0.70	0.10
CBAD-021	12.98	43.56	24.45	14.34	52.30	0.73	3.50	10.29	0.61	5.80	0.57	1.35	0.19	1.10	0.14
CBAD-022	22.09	64.80	20.52	21.80	80.20	1.18	5.77	16.32	0.97	9.20	0.92	2.30	0.31	1.80	0.24
CBAD-023	27.49	70.32	15.29	23.01	85.70	1.35	6.66	17.46	1.10	10.41	1.12	2.83	0.37	2.20	0.30
CBAD-024	43.57	96.63	12.02	30.76	113.90	1.94	9.58	22.47	1.47	14.43	1.65	4.18	0.56	3.20	0.45
CBAD-025	65.53	125.15	8.67	37.98	141.30	2.63	13.50	27.96	1.95	19.72	2.40	6.04	0.83	4.70	0.66

personal use only



Sample	Y mg/kg	La mg/kg	Ce mg/kg	Pr mg/kg	Nd mg/kg	Tb mg/kg	Dy mg/kg	Sm mg/kg	Eu mg/kg	Gd mg/kg	Ho mg/kg	Er mg/kg	Tm mg/kg	Yb mg/kg	Lu mg/kg
CBAD-026	76.10	132.88	6.06	38.77	144.80	2.80	14.48	29.13	1.98	21.06	2.61	6.65	0.88	5.10	0.70
CBAD-027	21.19	36.20	3.56	9.94	36.70	0.76	3.85	7.45	0.53	5.67	0.72	1.79	0.23	1.30	0.18
CBAD-028	68.65	119.41	5.86	32.07	122.20	2.48	12.94	23.98	1.68	18.77	2.34	6.00	0.79	4.40	0.62
CBAD-039	2.69	8.19	9.54	2.31	8.30	0.10	0.53	1.44	0.13	0.85	0.09	0.24	0.03	<0.4	<0.04
CBAD-040	3.20	10.56	14.83	2.98	10.70	0.14	0.71	1.91	0.17	1.16	0.13	0.31	0.04	<0.4	<0.04
CBAD-041	3.05	10.37	16.91	3.00	10.60	0.15	0.71	1.89	0.16	1.18	0.13	0.34	0.04	<0.4	<0.04
CBAD-042	3.26	10.95	25.41	3.11	11.20	0.15	0.70	1.96	0.18	1.21	0.13	0.31	0.05	<0.4	<0.04
CBAD-048	2.49	7.91	13.80	2.36	8.20	0.14	0.66	1.48	0.12	1.02	0.11	0.26	0.04	<0.4	<0.04
CBAD-049	2.83	9.59	15.64	2.80	9.90	0.16	0.78	1.83	0.14	1.19	0.12	0.31	0.04	<0.4	<0.04
CBAD-050	2.79	9.60	15.43	2.82	9.80	0.16	0.76	1.76	0.14	1.19	0.12	0.30	0.04	<0.4	<0.04
CBAD-051	3.30	11.73	18.09	3.37	11.80	0.19	0.92	2.05	0.16	1.38	0.14	0.35	0.05	<0.4	<0.04
CBAD-052	3.36	11.63	20.89	3.34	11.80	0.17	0.89	2.02	0.16	1.33	0.14	0.37	0.05	<0.4	<0.04
CBAD-053	3.20	10.52	24.90	2.98	10.30	0.15	0.81	1.78	0.14	1.19	0.14	0.32	0.05	<0.4	<0.04
CBAD-054	3.53	11.23	23.12	3.18	11.20	0.17	0.90	1.96	0.17	1.28	0.15	0.37	0.05	<0.4	<0.04
CBAD-055	22.57	69.97	18.98	16.05	56.00	0.85	4.46	9.54	0.52	6.29	0.80	2.11	0.29	1.60	0.22
CBAD-056	38.37	98.05	25.61	24.11	85.70	1.37	7.46	15.07	0.80	10.17	1.36	3.61	0.50	2.90	0.40
CBAD-057	50.53	138.54	22.44	37.52	133.60	1.98	10.31	22.92	1.29	14.36	1.91	4.93	0.72	4.00	0.57
CBAD-058	66.23	169.24	11.94	51.11	184.30	2.60	13.82	31.42	1.79	19.23	2.49	6.65	0.93	5.40	0.75
CBAD-059	91.76	207.17	7.37	62.13	225.80	3.47	18.54	39.31	2.32	25.00	3.40	9.01	1.24	7.50	1.04
CBAD-060	138.64	276.63	8.09	80.32	287.40	5.12	27.39	52.48	3.20	36.02	5.06	13.39	1.86	11.10	1.53
CBAD-061	135.59	214.73	0.37	60.39	215.50	4.69	25.50	41.39	2.72	31.48	4.76	12.79	1.74	10.30	1.41
CBAD-062	125.63	169.38	1.47	46.16	166.40	4.11	22.76	33.15	2.21	27.25	4.33	11.68	1.60	9.20	1.27
CBAD-063	161.67	182.79	1.87	49.76	177.10	5.25	29.76	36.29	2.57	33.69	5.69	15.29	2.08	12.10	1.65
CBAD-064	251.00	254.22	7.85	61.04	213.20	6.90	42.22	47.89	3.01	44.72	7.55	22.11	3.01	20.00	2.70
CBAD-065	3.52	11.13	15.04	1.93	6.10	0.09	0.44	0.95	0.08	0.64	0.08	0.21	0.03	<0.4	<0.04
CBAD-064	254.22	255.22	7.39	66.55	221.00	7.21	45.88	49.88	3.22	45.88	8.01	23.45	3.22	21.20	2.85
CBAD-065	2.78	8.74	15.89	1.65	5.20	<0.08	0.34	0.76	0.06	0.52	0.07	0.16	0.02	<0.4	<0.04
CPO-00001	3.09	10.79	12.26	2.33	5.70	0.40	0.54	1.16	0.47	0.86	0.28	0.32	0.19	<0.4	0.13
CPO-00002	1.47	6.73	9.16	1.28	3.60	0.11	0.23	0.58	0.13	0.38	0.08	0.12	0.04	<0.4	<0.04

personal use only



Sample	Y mg/kg	La mg/kg	Ce mg/kg	Pr mg/kg	Nd mg/kg	Tb mg/kg	Dy mg/kg	Sm mg/kg	Eu mg/kg	Gd mg/kg	Ho mg/kg	Er mg/kg	Tm mg/kg	Yb mg/kg	Lu mg/kg
CPO-00003	1.39	7.19	7.96	1.39	4.40	<0.08	0.24	0.64	0.09	0.40	0.06	0.12	0.03	<0.4	<0.04
CPO-00004	3.26	18.64	12.00	3.98	13.40	0.15	0.70	1.96	0.18	1.14	0.14	0.34	0.05	<0.4	0.04
CPO-00005	4.12	25.51	12.70	5.53	18.90	0.19	0.89	2.49	0.23	1.44	0.15	0.39	0.06	<0.4	0.04
CPO-00006	6.71	56.83	11.88	12.33	42.20	0.32	1.54	5.43	0.44	2.81	0.27	0.68	0.09	0.50	0.07
CPO-00007	14.24	109.17	15.98	24.48	83.70	0.70	3.36	11.06	0.93	5.94	0.58	1.38	0.19	1.00	0.14
CPO-00008	35.99	196.30	16.46	48.54	168.10	1.58	8.03	22.46	2.00	13.08	1.40	3.53	0.44	2.50	0.33
CPO-00009	39.31	227.80	11.02	56.28	195.70	1.77	8.89	25.66	2.23	14.81	1.56	3.86	0.50	2.70	0.36
CPO-00010	37.13	235.69	13.27	58.44	198.80	1.70	8.64	26.31	2.09	14.44	1.49	3.64	0.47	2.60	0.34
CPO-00011	48.51	308.67	14.60	77.34	267.70	2.29	11.73	36.04	2.79	19.40	2.02	4.98	0.66	3.80	0.50
CPO-00012	48.04	307.97	14.30	76.79	269.60	2.24	11.30	35.75	2.53	19.11	1.92	4.87	0.64	3.80	0.50
CPO-00032	1.39	7.40	2.66	1.26	4.10	<0.08	0.19	0.62	0.05	0.34	0.03	0.08	<0.012	<0.4	<0.04
CPO-00033	1.32	6.21	4.87	1.03	3.30	<0.08	0.19	0.54	0.04	0.34	0.03	0.08	<0.012	<0.4	<0.04
CPO-00034	4.45	5.70	5.22	1.08	3.80	<0.08	0.36	0.72	0.03	0.55	0.07	0.18	0.02	<0.4	<0.04
CPO-00035	2.01	3.90	6.15	0.77	2.70	<0.08	0.21	0.50	0.03	0.34	0.04	0.08	0.01	<0.4	<0.04
CPO-00036	1.84	4.04	7.55	0.84	2.90	<0.08	0.20	0.55	0.04	0.33	0.04	0.10	0.01	<0.4	<0.04
CPO-00037	1.05	2.71	5.53	0.59	<2.4	<0.08	0.17	0.38	0.03	0.24	0.03	0.08	0.01	<0.4	<0.04
CPO-00038	4.33	11.17	16.21	2.64	9.30	0.15	0.84	1.67	0.15	1.18	0.15	0.40	0.06	<0.4	0.04
CPO-00039	1.12	3.29	6.61	0.78	2.70	<0.08	0.23	0.51	0.04	0.33	0.04	0.10	0.01	<0.4	<0.04
CPO-00040	1.05	2.89	6.33	0.67	<2.4	<0.08	0.17	0.42	0.03	0.27	0.03	0.08	<0.012	<0.4	<0.04
CPO-00043	4.99	15.80	18.96	4.40	16.10	0.23	1.24	2.85	0.21	1.73	0.22	0.59	0.09	0.50	0.07
CPO-00044	11.96	36.90	21.06	10.15	37.20	0.57	3.04	6.93	0.50	4.15	0.53	1.42	0.20	1.20	0.16
CPO-00045	18.73	49.07	16.14	13.39	49.60	0.83	4.45	9.36	0.70	6.03	0.78	2.03	0.29	1.70	0.22
CPO-00046	41.39	89.66	15.32	23.22	86.10	1.68	9.18	16.71	1.32	11.63	1.66	4.29	0.58	3.40	0.46
CPO-00047	58.44	111.63	14.72	28.15	106.70	2.24	12.32	20.38	1.66	15.09	2.19	5.75	0.78	4.60	0.61
CPO-00048	68.02	114.08	11.62	29.98	110.60	2.78	13.86	21.63	2.12	16.86	2.73	6.62	1.04	5.30	0.82
CPO-00055	3.46	7.46	5.48	1.31	4.20	0.11	0.37	0.70	0.11	0.57	0.09	0.18	0.05	<0.4	<0.04
CPO-00056	2.16	4.87	6.57	0.80	2.60	<0.08	0.23	0.39	0.06	0.35	0.06	0.13	0.03	<0.4	<0.04
CPO-00057	1.58	4.30	6.09	0.73	2.50	<0.08	0.16	0.35	0.05	0.25	0.04	0.10	0.02	<0.4	<0.04
CPO-00058	2.10	6.59	7.71	1.37	4.70	<0.08	0.35	0.71	0.10	0.45	0.07	0.19	0.04	<0.4	<0.04
CPO-00059	1.47	4.75	3.64	0.99	3.60	<0.08	0.24	0.54	0.07	0.35	0.05	0.15	0.02	<0.4	<0.04

personal use only



Sample	Y mg/kg	La mg/kg	Ce mg/kg	Pr mg/kg	Nd mg/kg	Tb mg/kg	Dy mg/kg	Sm mg/kg	Eu mg/kg	Gd mg/kg	Ho mg/kg	Er mg/kg	Tm mg/kg	Yb mg/kg	Lu mg/kg
CPO-00060	1.88	5.86	3.43	1.16	4.30	<0.08	0.30	0.63	0.08	0.43	0.06	0.17	0.03	<0.4	<0.04
CPO-00061	2.63	7.12	3.43	1.52	5.80	<0.08	0.43	0.88	0.11	0.63	0.09	0.25	0.03	<0.4	<0.04
CPO-00061	3.11	7.79	3.37	1.63	6.00	0.08	0.45	0.94	0.13	0.65	0.09	0.25	0.03	<0.4	<0.04
CPO-00062	6.14	6.78	2.08	1.79	6.90	0.13	0.72	1.33	0.14	0.92	0.13	0.33	0.05	<0.4	<0.04
CPO-00063	6.24	11.25	2.90	3.51	14.30	0.19	1.08	2.53	0.32	1.47	0.19	0.52	0.07	0.40	0.06
CPO-00064	17.78	35.51	7.43	11.67	47.50	0.70	3.94	8.50	1.13	5.50	0.69	1.87	0.25	1.50	0.19
CPO-00065	29.45	52.01	9.19	16.90	68.80	1.19	6.44	13.40	1.77	8.84	1.18	3.18	0.42	2.50	0.31
CPO-00066	4.08	7.27	4.51	1.67	6.00	0.09	0.48	1.08	0.11	0.76	0.08	0.18	0.02	<0.4	<0.04
CPO-00067	2.09	4.62	6.11	1.09	3.90	<0.08	0.27	0.68	0.07	0.43	0.05	0.13	0.02	<0.4	<0.04
CPO-00068	3.30	6.52	15.14	1.58	5.60	0.11	0.57	1.10	0.10	0.71	0.11	0.29	0.05	<0.4	<0.04
CPO-00069	3.32	7.53	19.20	2.22	7.90	0.14	0.76	1.52	0.08	0.89	0.14	0.40	0.06	<0.4	0.05
CPO-00070	2.98	6.53	16.69	1.88	6.80	0.11	0.60	1.30	0.06	0.71	0.11	0.30	0.05	<0.4	<0.04
CPO-00071	2.29	6.28	14.20	2.09	7.90	0.10	0.58	1.36	0.07	0.70	0.11	0.28	0.04	<0.4	<0.04
CPO-00072	2.61	8.42	13.34	2.82	10.40	0.12	0.63	1.74	0.08	0.79	0.11	0.32	0.05	<0.4	0.04
CPO-00073	3.97	16.13	16.38	5.52	20.50	0.20	1.06	3.34	0.12	1.45	0.19	0.52	0.08	0.50	0.06
CPO-00074	3.82	18.93	12.77	6.60	24.70	0.20	1.06	3.87	0.14	1.55	0.19	0.53	0.07	0.50	0.06
CPO-00075	6.87	35.34	14.31	11.83	43.20	0.33	1.77	6.72	0.24	2.70	0.31	0.89	0.13	0.90	0.11
CPO-00076	12.81	36.17	12.36	12.16	45.90	0.39	2.18	7.43	0.27	3.22	0.40	1.07	0.17	1.00	0.14
CPO-00077	10.03	43.02	12.08	14.34	54.20	0.47	2.40	8.72	0.32	3.51	0.44	1.27	0.19	1.30	0.18
CPO-00078	4.97	19.02	3.96	5.90	22.00	0.21	1.19	3.74	0.15	1.66	0.23	0.63	0.10	0.60	0.09
CPO-00079	12.78	38.75	5.41	11.95	44.90	0.55	2.99	8.16	0.29	4.00	0.58	1.65	0.25	1.60	0.21
CPO-00080	3.39	9.82	3.44	2.03	7.00	0.09	0.45	1.11	0.10	0.68	0.08	0.21	0.03	<0.4	<0.04
CPO-00083	2.45	7.42	3.07	1.37	4.60	<0.08	0.31	0.77	0.08	0.46	0.06	0.15	0.02	<0.4	<0.04
CPO-00084	1.03	3.53	2.83	0.80	2.80	<0.08	0.22	0.44	0.05	0.28	0.04	0.10	0.02	<0.4	<0.04
CPO-00085	1.39	4.83	4.35	1.12	4.30	<0.08	0.32	0.64	0.09	0.39	0.06	0.14	0.02	<0.4	<0.04
CPO-00086	3.98	13.35	13.71	3.46	12.40	0.18	0.96	2.06	0.27	1.33	0.17	0.43	0.06	<0.4	0.05
CPO-00087	2.49	7.48	8.36	1.81	6.30	0.10	0.54	1.21	0.15	0.72	0.09	0.24	0.04	<0.4	<0.04
CPO-00088	2.62	5.54	7.48	1.51	5.90	0.10	0.58	1.06	0.15	0.77	0.12	0.34	0.05	<0.4	<0.04
CPO-00089	13.55	14.63	18.11	4.76	20.40	0.46	2.77	3.99	0.67	3.25	0.57	1.67	0.24	1.40	0.18
CPO-00090	23.88	17.32	19.84	5.78	25.70	0.66	4.23	5.43	0.99	4.64	0.86	2.57	0.34	2.10	0.28

personal use only



Sample	Y mg/kg	La mg/kg	Ce mg/kg	Pr mg/kg	Nd mg/kg	Tb mg/kg	Dy mg/kg	Sm mg/kg	Eu mg/kg	Gd mg/kg	Ho mg/kg	Er mg/kg	Tm mg/kg	Yb mg/kg	Lu mg/kg
CPO-00091	28.10	16.55	19.39	6.07	28.00	0.79	5.01	5.75	1.15	5.37	1.07	3.07	0.42	2.50	0.33
CPO-00092	34.87	16.89	20.36	6.55	31.10	0.93	5.87	6.61	1.37	6.39	1.25	3.60	0.49	2.80	0.39
CPO-00093	30.80	12.43	15.81	4.94	24.30	0.72	4.68	5.15	1.10	5.25	1.00	2.99	0.40	2.30	0.31
CPO-00094	16.32	5.99	8.14	2.49	12.80	0.40	2.57	2.68	0.64	2.77	0.56	1.65	0.21	1.30	0.18
CPO-00095	17.44	5.34	7.98	2.33	12.00	0.37	2.35	2.48	0.56	2.64	0.54	1.59	0.22	1.20	0.15
CPO-00096	17.99	4.79	7.87	2.13	11.70	0.37	2.34	2.48	0.56	2.54	0.52	1.50	0.21	1.20	0.17
CPO-00107	15.75	31.75	12.69	9.59	38.10	0.55	3.09	6.62	1.08	4.37	0.58	1.57	0.21	1.20	0.17
CPO-00108	24.98	48.65	13.20	13.09	51.10	0.96	5.21	9.65	1.80	7.25	0.96	2.57	0.33	1.90	0.27
CPO-00109	25.85	41.07	8.99	11.44	46.00	1.09	6.26	9.12	1.94	7.64	1.17	3.17	0.40	2.30	0.31
CPO-00110	61.98	83.84	15.55	22.19	91.30	2.42	13.90	18.66	4.23	16.56	2.56	6.83	0.86	5.00	0.69
CPO-00111	48.11	59.83	12.46	15.86	65.20	1.69	9.89	13.16	3.05	11.92	1.92	5.03	0.64	3.60	0.50
CPO-00112	34.69	36.50	7.14	9.89	41.80	1.23	7.12	8.63	2.15	8.45	1.36	3.64	0.47	2.60	0.35
CPO-00113	49.77	48.69	10.56	14.41	58.90	2.28	10.86	12.85	3.67	12.88	2.32	5.50	0.94	4.00	0.66
CPO-00114	6.27	9.47	11.82	2.06	7.20	0.19	0.81	1.32	0.24	1.07	0.17	0.35	0.07	<0.4	0.05
CPO-00115	2.92	6.32	6.54	1.38	4.80	0.10	0.44	0.90	0.11	0.59	0.09	0.21	0.04	<0.4	<0.04
CPO-00116	2.48	6.40	6.76	1.39	5.10	0.08	0.38	0.85	0.09	0.58	0.08	0.19	0.04	<0.4	<0.04
CPO-00116	1.98	6.05	6.61	1.36	4.80	0.08	0.37	0.85	0.07	0.55	0.07	0.18	0.03	<0.4	<0.04
CPO-00117	2.59	6.16	5.55	1.56	5.60	0.11	0.51	1.02	0.08	0.71	0.10	0.26	0.04	<0.4	<0.04
CPO-00118	2.25	6.10	5.63	1.76	6.70	0.12	0.59	1.31	0.11	0.79	0.12	0.27	0.04	<0.4	<0.04
CPO-00119	2.50	6.13	4.66	1.94	7.40	0.14	0.69	1.49	0.11	0.93	0.13	0.31	0.05	<0.4	<0.04
CPO-00120	4.72	10.85	6.24	3.70	14.10	0.28	1.43	2.83	0.21	1.88	0.24	0.65	0.09	0.50	0.06
CPO-00123	7.95	18.68	8.63	6.07	23.30	0.43	2.25	4.51	0.31	2.98	0.40	0.97	0.14	0.80	0.10
CPO-00124	11.50	24.43	9.66	8.71	29.80	1.26	3.53	6.36	1.14	4.44	1.00	1.72	0.52	1.30	0.37
CPO-00125	17.31	37.43	10.28	12.02	46.10	0.95	4.56	8.80	0.74	5.77	0.88	2.10	0.34	1.60	0.24
CPO-00126	15.32	30.63	5.83	9.41	36.50	0.70	3.78	7.05	0.52	4.65	0.68	1.74	0.24	1.40	0.18
CPO-00127	39.88	70.94	7.65	20.16	78.80	1.60	8.94	15.14	1.10	10.84	1.64	4.36	0.60	3.40	0.44
CPO-00128	57.06	89.79	5.78	24.23	94.00	2.09	11.91	18.80	1.36	14.40	2.25	6.05	0.81	4.60	0.61
CPO-00129	107.40	154.35	5.81	39.74	155.20	3.68	21.34	31.11	2.40	25.12	3.97	10.91	1.46	8.40	1.09
CPO-00130	101.79	135.21	3.49	35.08	137.90	3.42	19.86	27.82	2.22	23.53	3.76	10.06	1.37	7.70	1.00
CPO-00131	20.99	40.48	8.33	8.79	32.10	0.51	3.00	4.78	0.57	3.79	0.62	1.66	0.24	1.30	0.17

personal use only



Sample	Y mg/kg	La mg/kg	Ce mg/kg	Pr mg/kg	Nd mg/kg	Tb mg/kg	Dy mg/kg	Sm mg/kg	Eu mg/kg	Gd mg/kg	Ho mg/kg	Er mg/kg	Tm mg/kg	Yb mg/kg	Lu mg/kg
CPO-00132	14.79	29.56	5.84	6.78	26.00	0.39	2.33	3.94	0.53	3.05	0.48	1.35	0.17	1.00	0.14
CPO-00133	22.21	11.53	1.75	2.80	12.40	0.44	2.92	2.69	0.41	3.01	0.64	1.91	0.26	1.50	0.22
CPO-00134	122.75	19.67	7.13	6.47	35.70	2.34	16.61	9.85	2.41	15.22	3.89	11.72	1.66	9.50	1.31
CPO-00135	168.05	10.39	6.06	4.02	25.10	2.74	19.87	8.47	2.46	16.51	4.72	14.50	2.07	12.10	1.72
CPO-00136	259.98	7.24	6.99	3.36	23.50	3.78	28.33	9.07	3.08	22.15	6.97	21.51	3.03	17.60	2.45
CPO-00137	306.39	4.22	5.57	2.13	16.40	4.09	31.80	7.47	2.89	21.91	8.12	25.27	3.55	20.20	2.86
CPO-00138	340.59	1.77	2.40	0.88	7.80	3.76	31.63	4.58	2.24	19.13	8.39	26.69	3.69	21.80	3.07
CPO-00139	310.04	1.04	1.43	0.48	4.40	3.04	26.22	2.91	1.64	14.91	7.30	23.74	3.31	19.40	2.83
CPO-00147	14.50	2.66	4.85	0.80	3.30	0.13	0.83	0.70	0.12	0.90	0.18	0.55	0.06	<0.4	0.04
CPO-00148	9.64	7.93	13.21	2.26	8.50	0.15	0.86	1.53	0.18	1.08	0.17	0.41	0.06	<0.4	0.04
CPO-00149	3.82	4.62	6.53	1.19	4.60	<0.08	0.40	0.80	0.09	0.55	0.07	0.19	0.03	<0.4	<0.04
CPO-00150	3.24	5.29	8.55	1.38	5.10	0.08	0.44	0.88	0.10	0.58	0.08	0.22	0.03	<0.4	<0.04
CPO-00151	5.49	11.91	16.94	3.07	11.10	0.19	0.97	1.95	0.19	1.29	0.17	0.48	0.06	<0.4	0.05
CPO-00152	2.69	5.39	6.53	1.25	4.30	<0.08	0.37	0.69	0.08	0.51	0.08	0.15	0.02	<0.4	<0.04
CPO-00153	4.94	6.20	9.25	1.67	6.00	0.16	0.95	1.24	0.10	0.94	0.20	0.61	0.08	0.50	0.07
CPO-00154	4.09	3.81	5.20	1.05	4.00	0.11	0.77	0.84	0.08	0.66	0.18	0.51	0.08	0.50	0.06
CPO-00155	7.48	6.17	6.33	2.08	8.50	0.23	1.59	1.84	0.14	1.30	0.34	1.07	0.15	1.00	0.12
CPO-00156	15.84	15.05	9.78	5.01	20.20	0.47	3.16	4.17	0.27	2.90	0.69	2.06	0.29	1.70	0.22
CPO-00157	33.37	39.71	14.29	12.19	47.70	1.05	6.54	9.83	0.60	6.94	1.35	3.95	0.56	3.30	0.44
CPO-00158	11.66	13.28	5.05	4.32	16.70	0.54	2.55	3.91	0.35	2.81	0.58	1.54	0.26	1.30	0.19
CPO-00159	53.26	49.89	17.07	16.07	64.00	1.99	11.53	15.50	0.92	12.41	2.30	6.29	0.89	5.10	0.65
CPO-00160	81.79	73.42	21.77	21.46	85.20	2.89	17.07	21.12	1.14	18.17	3.27	9.11	1.24	7.10	0.92
CPO-00161	0.25	<1	<0.2	0.12	<2.4	<0.08	0.04	0.07	<0.02	0.06	<0.016	0.03	<0.012	<0.4	<0.04
CPO-00162	6.55	11.95	12.00	2.95	10.70	0.21	1.10	2.05	0.20	1.44	0.20	0.52	0.08	0.40	0.06
CPO-00163	80.23	70.61	23.09	19.86	79.00	2.90	17.30	20.33	1.03	18.29	3.33	9.20	1.23	7.00	0.89
CPO-00164	67.62	51.29	14.10	15.32	60.50	2.27	13.56	15.54	0.75	14.27	2.63	7.16	0.92	5.40	0.70
CPO-00165	91.91	62.88	15.54	17.91	70.90	2.95	17.65	18.86	0.89	18.50	3.41	9.39	1.23	7.00	0.90
CPO-00166	105.23	65.50	15.12	18.20	73.10	3.21	19.63	19.48	0.84	19.89	3.83	10.37	1.35	7.70	0.98
CPO-00167	137.12	69.02	14.64	19.18	76.60	3.76	23.30	21.06	0.88	22.62	4.56	12.59	1.61	9.00	1.15
CPO-00168	120.32	56.70	12.15	15.96	63.40	3.24	19.59	17.36	0.71	18.97	3.94	10.72	1.38	7.50	0.99

personal use only



Sample	Y mg/kg	La mg/kg	Ce mg/kg	Pr mg/kg	Nd mg/kg	Tb mg/kg	Dy mg/kg	Sm mg/kg	Eu mg/kg	Gd mg/kg	Ho mg/kg	Er mg/kg	Tm mg/kg	Yb mg/kg	Lu mg/kg
CPO-00168	108.79	50.80	11.52	14.81	59.60	3.03	18.58	16.35	0.68	18.52	3.70	10.06	1.28	7.10	0.93
CPO-00203	2.68	4.98	5.99	1.00	3.50	<0.08	0.30	0.62	0.04	0.43	0.06	0.13	0.02	<0.4	<0.04
CPO-00204	1.75	4.82	7.27	1.01	3.50	<0.08	0.23	0.58	0.03	0.35	0.04	0.10	0.02	<0.4	<0.04
CPO-00205	2.03	6.30	8.83	1.58	5.80	<0.08	0.40	1.05	0.06	0.64	0.07	0.18	0.03	<0.4	<0.04
CPO-00206	2.20	7.67	9.88	2.23	8.30	0.11	0.57	1.56	0.09	0.87	0.10	0.26	0.04	<0.4	<0.04
CPO-00207	3.39	11.20	12.98	3.19	11.80	0.15	0.82	2.11	0.13	1.21	0.15	0.40	0.06	<0.4	0.06
CPO-00208	4.80	13.36	12.33	4.28	14.20	0.52	1.33	2.88	0.53	1.84	0.41	0.71	0.24	0.70	0.20
CPO-00209	6.67	19.57	16.67	5.72	20.70	0.37	1.60	3.77	0.35	2.27	0.34	0.82	0.15	0.70	0.13
CPO-00210	10.77	29.71	16.70	8.29	30.80	0.50	2.52	5.70	0.44	3.52	0.47	1.24	0.19	1.10	0.16
CPO-00211	17.11	42.71	15.97	11.55	43.00	0.74	3.97	8.20	0.62	5.31	0.72	1.84	0.27	1.60	0.22
CPO-00212	27.95	64.11	14.25	17.12	63.50	1.14	6.03	12.30	0.96	8.18	1.08	2.83	0.39	2.30	0.32
CPO-00213	13.59	36.10	6.08	9.31	35.00	0.54	2.83	6.47	0.66	4.29	0.52	1.27	0.17	1.00	0.14
CPO-00214	46.69	130.80	12.78	34.09	129.30	1.88	9.63	22.13	2.43	15.07	1.75	4.43	0.57	3.30	0.48
CPO-00215	124.50	263.62	12.94	72.41	273.80	4.67	23.97	48.63	5.72	35.91	4.37	11.37	1.46	8.40	1.24
CPO-00216	145.51	258.23	8.08	70.33	261.10	5.17	27.02	48.75	6.03	38.20	4.93	12.57	1.64	9.30	1.38
CPO-00217	169.41	259.10	4.99	68.63	256.10	5.73	30.59	48.87	6.34	41.31	5.69	14.49	1.86	10.80	1.56
CPO-00218	126.50	168.02	2.98	44.58	168.90	4.12	22.13	33.19	4.40	29.48	4.07	10.48	1.35	7.60	1.14
CPO-00219	125.07	152.19	4.07	39.80	150.60	4.01	21.73	30.54	4.08	28.37	4.00	10.31	1.33	7.30	1.09
CPO-00220	93.27	110.47	6.41	24.84	97.60	2.91	15.49	21.20	2.77	20.14	2.92	7.45	0.95	5.20	0.78
CPO-00221	69.32	80.46	9.48	18.19	69.60	2.15	11.56	15.55	1.90	15.15	2.15	5.39	0.69	3.80	0.57
CPO-00222	5.80	6.83	1.22	1.52	5.90	0.16	0.91	1.28	0.12	1.21	0.16	0.42	0.05	<0.4	<0.04
CPO-00223	19.11	23.37	6.29	5.76	22.60	0.62	3.24	4.88	0.41	4.49	0.58	1.47	0.18	1.00	0.15
CPO-00224	14.85	20.21	6.41	5.20	20.10	0.49	2.53	4.29	0.30	3.71	0.45	1.09	0.12	0.70	0.10
CPO-00225	9.85	12.80	4.64	4.42	12.90	0.63	1.98	3.45	0.44	2.85	0.49	0.85	0.24	0.60	0.19
CPO-00225	11.21	15.36	5.64	4.85	19.10	0.54	2.16	3.79	0.38	3.15	0.45	0.99	0.20	0.60	0.12
CPO-00273	6.47	15.03	13.16	4.73	15.70	0.63	1.72	3.44	0.74	2.48	0.51	0.88	0.27	0.80	0.22
CPO-00274	9.11	20.15	17.03	5.64	20.50	0.48	2.11	4.09	0.63	3.04	0.43	1.03	0.18	0.90	0.15
CPO-00275	16.13	33.30	29.28	8.95	33.00	0.71	3.55	6.54	0.89	4.76	0.66	1.68	0.25	1.40	0.21
CPO-00276	15.73	31.44	28.29	8.49	31.50	0.66	3.44	6.19	0.83	4.65	0.63	1.57	0.23	1.40	0.20
CPO-00277	16.90	32.15	28.04	8.71	32.20	0.68	3.58	6.51	0.83	4.72	0.66	1.66	0.24	1.30	0.21

personal use only



Sample	Y mg/kg	La mg/kg	Ce mg/kg	Pr mg/kg	Nd mg/kg	Tb mg/kg	Dy mg/kg	Sm mg/kg	Eu mg/kg	Gd mg/kg	Ho mg/kg	Er mg/kg	Tm mg/kg	Yb mg/kg	Lu mg/kg
CPO-00278	96.11	121.17	11.88	21.80	75.00	1.97	12.04	13.05	1.75	12.83	2.57	7.40	1.04	6.00	0.88
CPO-00279	126.90	116.46	8.52	22.06	79.50	2.61	16.40	15.25	2.28	15.90	3.55	10.66	1.58	9.70	1.48
CPO-00280	99.03	83.78	4.39	14.84	53.50	1.99	12.72	10.48	1.75	11.96	2.77	8.29	1.26	7.70	1.16
CPO-00283	126.52	92.90	6.46	16.79	61.30	2.53	16.36	12.57	2.19	14.71	3.58	10.86	1.64	10.20	1.53
CPO-00284	127.43	97.58	7.79	17.94	66.00	2.63	17.02	13.79	2.46	15.50	3.70	11.17	1.70	10.60	1.58
CPO-00285	126.60	104.52	5.25	19.28	71.00	2.65	16.67	14.80	2.66	16.22	3.57	10.73	1.63	10.10	1.52
CPO-00290	5.97	11.33	14.14	2.32	7.80	0.13	0.70	1.37	0.15	0.94	0.12	0.31	0.05	<0.4	<0.04
CPO-00291	2.97	7.63	16.76	1.68	5.60	0.09	0.46	0.98	0.10	0.66	0.08	0.20	0.03	<0.4	<0.04
CPO-00292	5.95	8.98	14.54	1.94	6.70	0.12	0.61	1.22	0.08	0.83	0.11	0.29	0.04	<0.4	<0.04
CPO-00293	3.36	8.02	14.28	1.97	6.90	0.10	0.50	1.19	0.10	0.77	0.09	0.23	0.04	<0.4	<0.04
CPO-00294	3.28	10.00	16.74	2.64	9.20	0.13	0.64	1.66	0.14	1.00	0.12	0.28	0.04	<0.4	<0.04
CPO-00295	3.67	10.85	14.08	3.00	10.70	0.16	0.80	1.92	0.16	1.21	0.14	0.38	0.05	<0.4	0.04
CPO-00296	7.35	21.35	16.94	6.16	22.70	0.34	1.81	4.16	0.36	2.62	0.32	0.81	0.11	0.70	0.10
CPO-00297	10.61	27.31	14.96	7.77	28.90	0.47	2.45	5.32	0.52	3.52	0.43	1.13	0.16	0.90	0.12
CPO-00298	6.27	13.37	5.94	3.58	13.60	0.24	1.32	2.49	0.24	1.75	0.24	0.64	0.08	0.50	0.08
CPO-00299	45.03	65.35	6.37	13.34	47.10	1.13	6.33	8.35	0.53	7.96	1.22	3.20	0.41	2.10	0.28
CPO-00300	41.63	39.52	4.14	10.23	37.40	1.45	6.52	8.25	0.88	8.10	1.51	3.66	0.64	2.80	0.52
CPO-00301	45.42	34.90	3.70	8.02	30.60	1.11	6.23	6.75	0.44	7.19	1.35	3.68	0.52	2.80	0.43
CPO-00302	17.72	12.52	1.88	2.93	11.10	0.41	2.36	2.41	0.15	2.67	0.51	1.39	0.20	1.10	0.16
CPO-00303	16.27	10.92	1.97	2.69	10.60	0.37	2.16	2.35	0.13	2.47	0.46	1.27	0.17	0.90	0.14
CPO-00304	15.16	10.07	1.46	2.55	10.30	0.34	1.95	2.17	0.12	2.36	0.41	1.11	0.15	0.80	0.13
CPO-00305	57.18	67.66	7.06	12.37	44.20	1.37	7.73	8.38	0.51	9.15	1.50	3.79	0.44	2.00	0.27
CPO-00306	118.16	117.07	5.71	24.62	90.90	2.94	16.43	19.18	1.09	20.11	3.15	7.56	0.86	4.00	0.53
CPO-00307	29.13	23.50	1.24	5.87	22.40	0.87	4.80	5.40	0.31	5.55	0.91	2.24	0.27	1.30	0.18
CPO-00308	25.50	17.57	1.37	4.64	18.40	0.79	4.44	4.79	0.25	4.85	0.85	2.13	0.25	1.30	0.16
CPO-00309	19.05	12.14	1.37	3.39	13.50	0.62	3.49	3.64	0.19	3.83	0.66	1.62	0.19	1.00	0.13
CPO-00310	21.60	12.15	4.35	3.54	14.50	0.71	4.10	4.05	0.22	4.31	0.79	1.98	0.23	1.20	0.16
CPO-00311	25.69	13.41	5.75	4.11	16.70	0.87	5.06	4.90	0.27	5.33	0.95	2.45	0.30	1.50	0.20
CPO-00312	23.71	11.72	4.31	3.46	14.60	0.78	4.50	4.25	0.26	4.80	0.86	2.12	0.26	1.30	0.17
CPO-00313	22.60	10.43	3.81	3.14	13.40	0.71	3.99	3.87	0.24	4.49	0.77	1.89	0.22	1.10	0.14

personal use only



Sample	Y mg/kg	La mg/kg	Ce mg/kg	Pr mg/kg	Nd mg/kg	Tb mg/kg	Dy mg/kg	Sm mg/kg	Eu mg/kg	Gd mg/kg	Ho mg/kg	Er mg/kg	Tm mg/kg	Yb mg/kg	Lu mg/kg
CPO-00314	31.17	10.69	2.77	3.12	14.00	0.79	4.47	3.82	0.31	5.28	0.91	2.30	0.25	1.20	0.16
CPO-00315	33.64	7.92	1.52	2.19	10.60	0.60	3.48	2.69	0.32	4.18	0.74	1.84	0.20	0.90	0.13
CPO-00320	2.21	2.31	4.33	0.72	2.90	<0.08	0.30	0.61	0.04	0.47	0.06	0.13	0.02	<0.4	<0.04
CPO-00321	1.61	2.58	4.81	0.77	2.90	<0.08	0.23	0.60	0.05	0.39	0.04	0.11	0.02	<0.4	<0.04
CPO-00322	1.81	4.38	7.31	1.31	5.00	<0.08	0.32	0.90	0.06	0.56	0.06	0.15	0.02	<0.4	<0.04
CPO-00323	2.04	5.51	8.15	1.63	6.20	0.09	0.42	1.16	0.08	0.68	0.07	0.19	0.03	<0.4	<0.04
CPO-00324	3.83	10.86	11.28	3.21	12.20	0.18	0.92	2.32	0.18	1.45	0.16	0.42	0.06	<0.4	0.05
CPO-00325	8.75	21.81	14.61	6.53	25.00	0.40	2.05	4.93	0.41	3.22	0.35	0.97	0.13	0.80	0.12
CPO-00326	14.47	32.40	14.24	9.47	36.40	0.61	3.18	7.19	0.62	4.75	0.57	1.43	0.20	1.20	0.17
CPO-00327	23.68	48.73	13.00	13.27	51.20	0.93	4.91	10.31	0.92	7.25	0.87	2.27	0.32	1.90	0.26
CPO-00328	35.08	69.00	12.62	17.94	68.00	1.30	6.82	13.61	1.18	9.77	1.22	3.14	0.43	2.60	0.38
CPO-00328	37.51	72.56	12.77	18.75	71.10	1.36	7.21	14.20	1.25	10.50	1.31	3.38	0.46	2.80	0.38
CPO-00511	297.66	1424.00	17.59	324.13	1080.00	11.72	62.53	158.09	9.24	92.10	11.86	31.67	4.14	23.60	3.19
CPO-00512	146.58	648.83	7.66	159.35	545.60	5.76	30.87	76.76	4.57	45.02	5.87	15.18	2.00	11.20	1.52
CPO-00513	142.51	529.55	5.08	127.81	441.20	4.94	26.81	63.16	3.95	38.74	5.11	13.48	1.77	9.90	1.31
CPO-00514	144.96	559.15	2.97	133.46	459.50	5.59	30.42	67.74	4.28	42.66	5.75	15.41	1.99	11.10	1.48
CPO-00515	143.79	488.13	2.78	114.26	393.80	5.05	27.29	58.69	3.76	38.17	5.18	13.73	1.78	10.00	1.33
CPO-00516	137.42	430.60	1.54	102.43	353.40	4.81	25.98	53.23	3.50	35.88	4.96	13.00	1.69	9.50	1.24
CPO-00517	134.21	398.50	2.06	92.15	317.70	4.60	25.01	48.72	3.30	34.09	4.78	12.69	1.63	9.10	1.21
CPO-00518	136.96	432.00	1.48	97.80	333.70	5.13	28.09	52.52	3.59	37.49	5.37	14.30	1.82	10.10	1.37
CPO-00519	129.15	362.01	2.23	82.47	285.10	4.28	23.53	44.03	2.99	31.65	4.52	11.83	1.52	8.40	1.10
CPO-00520	122.63	330.98	1.45	72.20	251.20	4.05	22.24	39.36	2.75	29.56	4.25	11.13	1.41	7.90	1.03
CPO-00521	70.00	194.20	5.46	48.07	164.10	2.49	12.95	27.04	1.21	18.92	2.46	6.42	0.86	4.80	0.63
CPO-00522	144.39	278.84	3.46	59.35	202.30	4.56	24.47	36.36	1.88	32.79	4.71	12.51	1.62	8.80	1.24
CPO-00523	134.45	214.29	2.14	42.66	143.50	4.36	24.03	27.79	1.55	29.34	4.67	12.26	1.57	8.40	1.19
CPO-00524	193.65	231.39	1.53	44.85	151.80	5.77	32.53	30.45	1.78	36.63	6.42	16.80	2.08	11.20	1.51
CPO-00525	177.76	172.38	1.51	33.16	113.10	4.96	28.92	23.47	1.39	30.40	5.67	14.83	1.83	9.60	1.32
CPO-00526	212.44	166.94	3.04	31.43	107.80	5.55	32.58	23.32	1.32	31.72	6.49	17.11	2.07	10.90	1.48
CPO-00527	109.83	88.28	2.83	14.96	51.70	2.47	14.72	11.01	0.58	14.28	2.95	7.62	0.95	5.00	0.68
CPO-00528	2.14	4.62	3.09	0.79	2.70	<0.08	0.26	0.40	0.04	0.38	0.05	0.12	0.02	<0.4	<0.04

personal use only



Sample	Y mg/kg	La mg/kg	Ce mg/kg	Pr mg/kg	Nd mg/kg	Tb mg/kg	Dy mg/kg	Sm mg/kg	Eu mg/kg	Gd mg/kg	Ho mg/kg	Er mg/kg	Tm mg/kg	Yb mg/kg	Lu mg/kg
CPO-00529	1.72	5.02	5.09	0.94	3.20	<0.08	0.27	0.53	0.04	0.39	0.05	0.13	0.02	<0.4	<0.04
CPO-00530	1.78	5.73	6.95	1.20	4.30	<0.08	0.32	0.73	0.05	0.49	0.06	0.16	0.02	<0.4	<0.04
CPO-00531	2.83	9.95	10.78	2.34	8.50	0.12	0.60	1.44	0.09	0.92	0.11	0.30	0.04	<0.4	<0.04
CPO-00532	1.80	8.17	8.80	1.44	5.00	<0.08	0.29	0.68	0.05	0.48	0.05	0.14	0.02	<0.4	<0.04
CPO-00533	3.25	12.13	15.12	2.28	7.90	0.10	0.47	1.10	0.08	0.78	0.10	0.25	0.03	<0.4	<0.04
CPO-00534	4.12	15.27	18.26	3.21	11.20	0.13	0.63	1.61	0.12	1.06	0.13	0.34	0.04	<0.4	<0.04
CPO-00535	5.71	21.62	17.25	5.10	18.50	0.22	1.13	2.95	0.21	1.78	0.21	0.54	0.08	0.40	0.06
CPO-00536	13.32	45.56	21.16	11.17	40.30	0.54	2.83	6.91	0.49	4.24	0.52	1.33	0.18	1.10	0.16
CPO-00537	14.45	42.32	14.03	10.58	37.90	0.55	2.92	6.68	0.48	4.30	0.53	1.42	0.19	1.10	0.17
CPO-00538	16.08	39.61	10.58	10.10	36.60	0.61	3.14	6.81	0.50	4.54	0.56	1.51	0.20	1.20	0.17
CPO-00539	29.50	67.59	12.45	16.68	60.80	1.10	5.61	11.60	0.85	8.07	1.02	2.71	0.37	2.20	0.29
CPO-00540	46.19	95.19	9.03	23.34	85.40	1.68	8.69	16.73	1.30	12.18	1.56	4.08	0.54	3.20	0.43
CPO-00541	0.34	<1	<0.2	0.13	<2.4	<0.08	0.04	0.08	<0.02	0.06	<0.016	<0.02	<0.012	<0.4	<0.04
CPO-00542	13.69	36.45	9.96	9.53	34.50	0.54	2.78	6.43	0.45	4.02	0.50	1.28	0.17	1.00	0.14
CPO-00543	54.78	92.79	6.79	22.71	84.60	1.81	9.59	16.87	1.37	13.25	1.79	4.68	0.62	3.70	0.50
CPO-00544	31.44	54.59	3.62	9.07	30.30	0.64	3.31	4.60	0.31	4.64	0.66	1.69	0.20	1.00	0.13
CPO-00545	41.21	49.25	2.28	11.97	44.10	0.99	5.17	7.89	0.54	7.51	1.01	2.59	0.31	1.70	0.24
CPO-00553	61.46	95.26	3.96	21.49	76.20	1.52	8.54	13.27	1.01	11.01	1.71	4.55	0.61	3.40	0.48
CPO-00554	103.01	124.61	4.42	27.71	98.20	2.31	13.04	17.68	1.35	15.96	2.65	7.30	0.97	5.60	0.84
CPO-00555	80.92	87.96	5.82	19.34	68.40	1.85	10.58	13.24	1.02	12.42	2.13	5.74	0.76	4.40	0.66
CPO-00556	84.88	86.91	9.11	19.00	67.10	1.94	10.91	13.29	1.04	12.72	2.22	5.99	0.81	4.60	0.68
CPO-00557	114.76	106.96	20.41	23.58	83.90	2.55	14.62	16.80	1.17	16.43	2.90	7.71	1.01	5.70	0.82
CPO-00558	90.73	84.81	25.70	19.94	72.40	2.15	12.22	14.78	0.98	13.88	2.37	6.24	0.82	4.70	0.67
CPO-00559	33.29	38.84	15.06	9.22	32.80	0.87	4.79	6.59	0.42	5.76	0.92	2.43	0.31	1.80	0.25
CPO-00560	17.50	21.34	9.98	5.19	18.90	0.49	2.60	3.73	0.23	3.28	0.49	1.26	0.17	1.00	0.14
CPO-00561	18.57	21.01	10.81	5.31	19.30	0.50	2.75	3.98	0.23	3.45	0.52	1.39	0.18	1.00	0.15
CPO-00562	14.72	15.72	8.05	4.07	15.00	0.39	2.18	3.02	0.19	2.67	0.41	1.05	0.14	0.80	0.11
CPO-00563	12.39	13.43	7.21	3.49	13.00	0.33	1.85	2.63	0.16	2.26	0.35	0.93	0.12	0.70	0.10
CPO-00564	12.86	14.18	6.89	3.63	13.40	0.34	1.92	2.67	0.16	2.29	0.36	0.94	0.13	0.70	0.10
CPO-00565	16.97	19.49	7.87	4.80	17.80	0.44	2.43	3.53	0.22	3.05	0.48	1.25	0.16	1.00	0.13

personal use only



Sample	Y mg/kg	La mg/kg	Ce mg/kg	Pr mg/kg	Nd mg/kg	Tb mg/kg	Dy mg/kg	Sm mg/kg	Eu mg/kg	Gd mg/kg	Ho mg/kg	Er mg/kg	Tm mg/kg	Yb mg/kg	Lu mg/kg
Sample	Y mg/kg	La mg/kg	Ce mg/kg	Pr mg/kg	Nd mg/kg	Tb mg/kg	Dy mg/kg	Sm mg/kg	Eu mg/kg	Gd mg/kg	Ho mg/kg	Er mg/kg	Tm mg/kg	Yb mg/kg	Lu mg/kg
CPO-00566	15.82	17.81	6.89	4.43	16.60	0.40	2.29	3.27	0.19	2.74	0.42	1.15	0.15	0.90	0.12
CPO-00567	0.74	1.59	1.34	0.27	<2.4	<0.08	0.08	0.15	<0.02	0.12	<0.016	0.04	<0.012	<0.4	<0.04
CPO-00565	15.03	17.27	6.89	4.27	15.80	0.41	2.18	3.04	0.19	2.82	0.41	1.14	0.15	0.80	0.12
CPO-00567	0.48	1.17	1.18	0.21	<2.4	<0.08	0.05	0.12	<0.02	0.09	<0.016	0.04	<0.012	<0.4	<0.04
CPO-00577	1.44	4.21	9.74	1.11	3.70	0.10	0.31	0.68	0.12	0.45	0.09	0.17	0.04	<0.4	0.04
CPO-00578	1.10	4.21	9.30	1.10	3.80	<0.08	0.25	0.66	0.08	0.38	0.05	0.13	0.02	<0.4	<0.04
CPO-00579	1.68	7.07	13.75	1.84	6.50	<0.08	0.39	1.05	0.11	0.64	0.07	0.18	0.03	<0.4	<0.04
CPO-00580	1.49	6.17	11.14	1.60	5.70	<0.08	0.36	0.98	0.10	0.55	0.07	0.15	0.03	<0.4	<0.04
CPO-00581	<0.2	<1	0.46	0.07	<2.4	<0.08	<0.028	0.04	<0.02	0.03	<0.016	<0.02	<0.012	<0.4	<0.04
CPO-00582	95.72	86.66	26.93	20.52	75.10	2.25	12.83	15.25	1.06	14.89	2.47	6.59	0.85	4.90	0.70
CPO-00583	1.82	5.52	7.96	1.38	5.00	<0.08	0.32	0.80	0.08	0.51	0.06	0.16	0.02	<0.4	<0.04
CPO-00584	1.99	7.98	12.57	2.05	7.40	0.08	0.45	1.18	0.12	0.69	0.08	0.21	0.03	<0.4	<0.04
CPO-00585	1.92	8.14	12.39	2.01	7.30	0.09	0.45	1.22	0.13	0.70	0.08	0.21	0.03	<0.4	<0.04
CPO-00586	0.31	1.29	0.61	0.27	<2.4	<0.08	0.04	0.13	<0.02	0.07	<0.016	<0.02	<0.012	<0.4	<0.04
CPO-00587	1.77	11.41	9.04	2.46	8.50	<0.08	0.35	1.14	0.11	0.60	0.06	0.14	0.02	<0.4	<0.04
CPO-00588	4.97	23.27	13.52	5.97	21.80	0.20	1.06	3.22	0.30	1.77	0.19	0.54	0.07	0.50	0.06
CPO-00589	7.80	34.22	15.32	8.51	30.90	0.31	1.64	4.67	0.49	2.59	0.30	0.82	0.11	0.70	0.09
CPO-00590	3.56	14.46	7.61	3.66	13.20	0.14	0.74	2.02	0.21	1.12	0.13	0.34	0.05	<0.4	<0.04
CPO-00591	3.51	10.93	5.61	2.71	9.50	0.11	0.62	1.50	0.15	0.95	0.12	0.32	0.04	<0.4	<0.04
CPO-00592	3.75	14.26	25.36	3.73	12.70	0.14	0.82	2.06	0.12	1.15	0.14	0.41	0.06	<0.4	0.06
CPO-00593	3.21	11.41	17.72	2.93	10.20	0.12	0.67	1.65	0.09	0.90	0.12	0.36	0.05	<0.4	0.04
CPO-00594	6.98	33.50	24.09	8.58	29.90	0.30	1.59	4.50	0.23	2.34	0.28	0.74	0.10	0.60	0.08
CPO-00595	32.40	144.56	32.17	41.52	142.80	1.37	7.21	20.84	0.99	10.97	1.29	3.36	0.44	2.70	0.35
CPO-00596	82.13	368.36	30.79	101.69	347.70	3.30	17.52	49.51	2.47	26.18	3.12	8.17	1.12	6.90	0.89
CPO-00597	53.00	222.09	9.69	62.44	214.80	2.12	11.28	31.82	1.57	16.62	2.00	5.35	0.74	4.50	0.56
CPO-00598	54.59	219.48	3.87	60.11	203.30	2.11	11.25	30.43	1.51	16.54	2.04	5.41	0.74	4.50	0.60
CPO-00599	74.12	280.10	5.71	76.05	260.70	2.77	14.63	38.40	1.89	21.25	2.65	7.14	0.95	5.70	0.76
CPO-00600	49.38	77.14	1.97	12.25	42.10	1.09	6.05	6.71	0.31	7.31	1.24	3.15	0.39	1.90	0.30

personal use only



Sample	Y mg/kg	La mg/kg	Ce mg/kg	Pr mg/kg	Nd mg/kg	Tb mg/kg	Dy mg/kg	Sm mg/kg	Eu mg/kg	Gd mg/kg	Ho mg/kg	Er mg/kg	Tm mg/kg	Yb mg/kg	Lu mg/kg
CPO-00601	141.77	121.90	1.13	17.84	63.30	2.18	12.65	10.37	0.46	14.70	2.72	7.11	0.78	3.70	0.54
CPO-00602	129.01	90.06	1.87	15.08	54.00	1.98	11.46	9.43	0.41	12.43	2.50	6.38	0.72	3.30	0.52
CPO-00603	52.36	57.91	2.71	10.35	37.40	0.96	5.55	6.25	0.23	6.58	1.15	3.10	0.35	1.80	0.29
CPO-00604	12.33	36.11	9.53	7.95	27.80	0.41	2.08	4.33	0.36	3.10	0.38	1.00	0.12	0.70	0.09
CPO-00605	30.91	70.10	12.09	18.37	69.10	1.14	5.94	12.99	1.21	8.98	1.09	2.91	0.40	2.40	0.33
CPO-00606	61.50	108.21	11.62	27.02	100.70	2.14	11.57	20.05	2.08	16.02	2.13	5.59	0.74	4.50	0.61
CPO-00607	79.68	135.39	25.81	39.22	145.70	2.81	14.83	27.71	2.86	21.34	2.70	7.04	0.92	5.60	0.78
CPO-00608	66.81	92.88	12.45	22.30	82.40	2.20	11.90	17.54	1.87	15.52	2.20	5.81	0.75	4.50	0.63
CPO-00609	70.13	83.80	19.94	19.81	73.50	2.19	11.91	16.09	1.74	15.14	2.20	5.75	0.74	4.50	0.62
CPO-00610	31.89	37.51	12.29	8.96	33.60	1.00	5.46	7.15	0.77	6.96	1.01	2.65	0.35	2.00	0.29
CPO-00611	20.59	24.68	11.57	6.21	23.40	0.66	3.50	4.97	0.47	4.68	0.65	1.66	0.22	1.30	0.17
CPO-00612	10.62	12.45	7.09	3.21	12.20	0.33	1.78	2.64	0.26	2.41	0.32	0.82	0.11	0.60	0.09
CPO-00613	5.90	7.19	3.73	1.82	7.00	0.18	0.99	1.49	0.12	1.35	0.19	0.44	0.06	<0.4	0.05
CPO-00614	11.69	14.77	6.55	3.66	14.00	0.36	1.86	2.94	0.24	2.61	0.34	0.92	0.12	0.70	0.10
CPO-00615	10.90	14.06	5.66	3.46	13.30	0.33	1.72	2.72	0.21	2.43	0.33	0.83	0.10	0.70	0.10
CPO-00616	10.47	13.30	4.90	3.24	12.30	0.30	1.65	2.49	0.22	2.29	0.30	0.77	0.10	0.60	0.09
CPO-00617	11.70	14.09	5.08	3.40	12.90	0.33	1.75	2.64	0.22	2.47	0.33	0.90	0.11	0.70	0.10
CPO-00618	9.50	11.47	4.16	2.77	10.70	0.26	1.45	2.11	0.20	2.02	0.28	0.70	0.10	0.60	0.08
CPO-00619	4.44	5.22	2.04	1.31	5.00	0.12	0.70	1.04	0.09	0.94	0.13	0.35	0.04	<0.4	<0.04
CPO-00620	6.74	7.82	3.15	1.90	7.50	0.19	1.03	1.50	0.13	1.38	0.20	0.51	0.07	0.40	0.06
CPO-00621	0.27	<1	<0.2	0.08	<2.4	<0.08	0.03	0.05	<0.02	0.03	<0.016	<0.02	<0.012	<0.4	<0.04
CPO-00622	44.79	52.60	17.51	12.62	46.70	1.44	7.85	10.20	1.05	9.86	1.45	3.81	0.48	2.80	0.39
CPO-00623	12.54	23.66	7.79	6.03	21.90	0.41	2.20	3.91	0.29	3.03	0.40	1.06	0.14	0.80	0.11
CPO-00624	14.82	26.56	6.75	6.95	25.70	0.49	2.70	4.69	0.31	3.58	0.50	1.33	0.18	1.00	0.15
CPO-00625	27.90	49.24	8.02	12.33	45.30	0.91	5.07	8.38	0.58	6.51	0.93	2.50	0.32	1.90	0.26
CPO-00626	50.00	83.29	6.60	20.79	77.20	1.59	8.84	14.51	1.01	11.37	1.64	4.29	0.57	3.40	0.46
CPO-00627	60.89	93.11	2.41	21.72	81.60	1.79	9.70	15.08	1.10	12.86	1.86	4.86	0.66	3.80	0.55
CPO-00628	49.77	62.62	1.55	12.33	47.90	1.20	6.76	8.68	0.61	8.84	1.39	3.72	0.49	2.70	0.40
CPO-00629	39.24	38.51	6.04	10.16	39.70	1.05	5.95	7.87	0.92	7.35	1.17	3.14	0.41	2.30	0.31
CPO-00630	41.86	38.83	4.04	9.24	36.70	1.00	5.73	6.91	0.78	7.00	1.15	3.08	0.40	2.20	0.30

personal use only



Sample	Y mg/kg	La mg/kg	Ce mg/kg	Pr mg/kg	Nd mg/kg	Tb mg/kg	Dy mg/kg	Sm mg/kg	Eu mg/kg	Gd mg/kg	Ho mg/kg	Er mg/kg	Tm mg/kg	Yb mg/kg	Lu mg/kg
CPO-00631	43.07	27.22	1.69	6.69	27.90	0.96	5.63	5.96	0.62	6.91	1.17	3.17	0.39	2.10	0.30
CPO-00624	14.12	25.07	6.33	6.59	24.10	0.45	2.55	4.29	0.31	3.35	0.48	1.27	0.18	1.00	0.13
CPO-00631	42.75	26.22	1.54	6.44	26.80	0.93	5.55	5.69	0.60	6.72	1.13	3.03	0.38	2.10	0.30
CPO-00361	9.00	27.32	15.62	7.94	29.30	0.38	1.86	5.12	0.42	2.90	0.35	0.91	0.13	0.70	0.10
CPO-00362	8.94	31.06	11.22	9.25	34.70	0.39	1.92	6.03	0.49	3.27	0.34	0.87	0.12	0.70	0.10
CPO-00363	18.63	61.07	7.65	17.75	67.40	0.81	4.03	12.07	1.02	6.99	0.69	1.77	0.24	1.40	0.17
CPO-00364	35.51	109.86	5.91	29.99	111.70	1.55	7.58	20.11	1.73	12.71	1.31	3.36	0.42	2.50	0.32
CPO-00365	45.79	121.60	4.21	33.58	126.00	1.87	9.38	22.35	1.99	14.82	1.68	4.24	0.57	3.20	0.44
CPO-00366	40.39	84.35	1.94	22.23	83.60	1.47	7.64	15.64	1.46	11.29	1.38	3.58	0.48	2.70	0.38
CPO-00367	85.68	145.65	2.62	38.80	144.90	2.88	15.23	27.32	2.70	21.62	2.84	7.41	0.96	5.60	0.77
CPO-00368	118.26	159.94	2.65	43.26	166.00	3.58	19.37	31.29	3.16	26.49	3.64	9.67	1.24	7.20	1.02
CPO-00369	116.68	172.52	2.38	37.65	140.20	3.48	18.62	27.64	2.86	24.74	3.56	9.47	1.22	6.90	0.97
CPO-00370	117.38	129.51	2.83	28.85	106.80	3.26	18.14	22.96	2.43	22.58	3.50	9.19	1.20	6.70	0.93
CPO-00371	111.46	102.01	4.20	21.67	79.10	2.95	16.59	17.46	1.95	19.37	3.19	8.56	1.12	6.20	0.87
CPO-00372	73.22	63.67	5.14	13.53	49.60	1.96	11.23	10.92	1.20	12.59	2.22	5.83	0.76	4.30	0.59
CPO-00373	58.87	47.46	7.18	10.12	37.60	1.54	8.94	8.42	0.81	9.77	1.75	4.73	0.60	3.40	0.47
CPO-00374	33.87	28.65	6.80	6.64	25.10	0.91	5.22	5.45	0.47	5.89	1.01	2.67	0.34	1.90	0.25
CPO-00375	20.71	19.39	5.52	4.76	17.80	0.54	3.04	3.78	0.25	3.61	0.60	1.59	0.20	1.10	0.15
CPO-00376	12.57	12.85	4.29	3.36	12.90	0.34	1.97	2.59	0.18	2.46	0.37	1.02	0.13	0.80	0.10
CPO-00377	10.11	10.77	4.07	2.92	11.20	0.29	1.60	2.27	0.15	2.08	0.30	0.83	0.10	0.60	0.08
CPO-00390	3.86	6.98	7.47	1.62	5.80	0.08	0.42	1.00	0.08	0.66	0.08	0.19	0.03	<0.4	<0.04
CPO-00391	2.27	6.44	8.30	1.59	5.80	<0.08	0.35	1.01	0.09	0.58	0.06	0.16	0.02	<0.4	<0.04
CPO-00392	1.77	6.18	8.60	1.57	5.70	<0.08	0.33	0.93	0.09	0.53	0.06	0.15	0.02	<0.4	<0.04
CPO-00393	1.78	6.56	8.99	1.66	6.10	<0.08	0.34	1.07	0.11	0.60	0.06	0.17	0.03	<0.4	<0.04
CPO-00394	1.86	5.65	7.08	1.72	5.40	0.25	0.49	1.14	0.30	0.75	0.19	0.27	0.12	<0.4	0.09
CPO-00395	1.96	6.79	8.26	1.81	6.40	0.13	0.46	1.19	0.17	0.71	0.11	0.23	0.05	<0.4	0.04
CPO-00396	1.61	5.26	5.92	1.40	5.00	0.08	0.37	0.94	0.12	0.56	0.07	0.17	0.03	<0.4	<0.04
CPO-00397	6.34	26.56	7.66	7.51	28.90	0.24	1.23	3.92	0.59	2.12	0.26	0.66	0.10	0.60	0.08
CPO-00398	6.94	30.98	6.44	8.43	31.90	0.27	1.43	4.37	0.65	2.34	0.27	0.75	0.11	0.70	0.10
CPO-00399	7.17	37.93	6.19	9.73	36.00	0.30	1.52	5.21	0.79	2.62	0.29	0.75	0.11	0.70	0.08

personal use only



Sample	Y mg/kg	La mg/kg	Ce mg/kg	Pr mg/kg	Nd mg/kg	Tb mg/kg	Dy mg/kg	Sm mg/kg	Eu mg/kg	Gd mg/kg	Ho mg/kg	Er mg/kg	Tm mg/kg	Yb mg/kg	Lu mg/kg
CPO-00400	20.11	101.36	9.46	23.07	84.90	0.84	4.28	12.97	2.08	7.49	0.80	2.10	0.30	1.70	0.24
CPO-00401	27.44	100.75	9.44	22.93	84.70	1.13	6.01	14.69	2.58	9.73	1.12	2.94	0.40	2.40	0.34
CPO-00402	30.99	79.97	7.21	18.20	67.60	1.25	6.63	13.07	2.47	9.89	1.24	3.29	0.45	2.70	0.37
CPO-00403	38.55	66.72	5.49	15.37	58.40	1.45	7.80	11.70	2.42	10.42	1.48	3.99	0.54	3.10	0.42
CPO-00404	69.98	83.75	7.76	20.46	79.30	2.34	13.17	16.61	3.64	16.17	2.52	6.71	0.88	5.30	0.70
CPO-00405	79.93	82.75	8.67	20.58	80.70	2.47	14.23	16.72	3.73	16.56	2.76	7.31	0.97	5.70	0.75
CPO-00406	41.11	37.44	5.07	9.82	38.60	1.24	7.18	8.06	1.85	8.32	1.41	3.76	0.49	2.90	0.38
CPO-00438	10.49	16.58	11.63	4.60	17.20	0.35	1.86	3.43	0.36	2.58	0.34	0.90	0.13	0.70	0.08
CPO-00439	6.55	38.83	17.85	9.81	31.50	0.33	1.60	4.87	0.34	2.57	0.26	0.64	0.09	0.50	0.06
CPO-00440	8.47	61.28	11.72	13.89	44.80	0.55	2.52	6.95	0.47	3.89	0.44	1.00	0.15	0.70	0.10
CPO-00441	11.43	70.99	14.90	15.50	50.90	0.60	3.00	7.98	0.50	4.55	0.51	1.26	0.17	0.90	0.11
CPO-00439	5.75	42.52	17.73	10.47	33.20	0.34	1.65	5.27	0.34	2.59	0.26	0.66	0.09	0.50	0.06
CPO-00441	10.85	65.02	13.67	14.32	47.00	0.56	2.83	7.13	0.47	4.18	0.48	1.16	0.15	0.80	0.09
CPO-00442	9.14	51.70	10.70	12.85	41.50	0.65	2.42	6.65	0.63	3.66	0.55	1.09	0.24	0.80	0.17
CPO-00443	12.80	79.80	11.47	19.58	64.30	0.69	3.36	9.73	0.62	5.09	0.61	1.43	0.21	1.10	0.15
CPO-00444	17.48	96.52	8.86	23.30	78.60	0.85	4.27	12.01	0.70	6.47	0.75	1.82	0.25	1.40	0.19
CPO-00445	32.71	138.14	9.00	38.24	131.80	1.40	7.34	18.98	1.11	10.74	1.31	3.33	0.43	2.40	0.30
CPO-00446	42.68	187.61	6.91	55.07	190.30	1.85	9.56	27.54	1.65	14.33	1.69	4.43	0.57	3.30	0.41
CPO-00447	47.72	222.26	4.88	63.03	222.40	2.11	10.82	32.84	2.04	16.85	1.93	4.97	0.67	3.90	0.49
CPO-00448	51.97	224.26	5.03	62.01	220.00	2.28	11.59	33.51	2.27	18.30	2.08	5.45	0.71	4.10	0.54
CPO-00449	77.71	275.29	4.02	69.33	251.30	3.08	16.32	40.27	2.98	24.88	2.98	7.91	1.04	6.00	0.77
CPO-00450	93.32	242.15	3.43	58.23	207.30	3.29	18.05	35.18	2.81	25.20	3.34	8.88	1.17	6.70	0.88
CPO-00451	111.50	211.41	3.44	46.66	166.90	3.60	20.00	30.33	2.66	25.49	3.79	10.23	1.35	7.60	1.02
CPO-00452	152.65	199.38	2.88	39.15	138.30	4.37	25.44	26.40	2.56	28.47	5.01	13.51	1.77	10.00	1.32
CPO-00453	98.58	86.71	1.74	12.27	44.30	1.96	12.36	8.84	0.89	12.25	2.65	7.56	0.96	5.40	0.75
CPO-00454	120.50	52.89	2.98	5.46	20.70	1.28	9.06	3.88	0.42	7.71	2.35	7.09	0.90	4.80	0.75
CPO-00455	8.76	14.24	4.42	3.33	11.90	0.22	1.16	2.15	0.15	1.49	0.23	0.67	0.09	0.50	0.07
CPO-00456	18.41	37.84	8.03	9.68	35.60	0.58	3.21	6.45	0.47	4.30	0.62	1.71	0.25	1.60	0.21
CPO-00457	35.42	73.27	10.44	18.86	68.80	1.23	6.86	12.79	0.98	8.90	1.30	3.62	0.51	3.20	0.44

personal use only



Sample	Y mg/kg	La mg/kg	Ce mg/kg	Pr mg/kg	Nd mg/kg	Tb mg/kg	Dy mg/kg	Sm mg/kg	Eu mg/kg	Gd mg/kg	Ho mg/kg	Er mg/kg	Tm mg/kg	Yb mg/kg	Lu mg/kg
CPO-00458	56.98	100.58	8.86	25.55	93.70	1.90	10.82	18.23	1.38	13.37	2.06	5.85	0.82	5.10	0.69
CPO-00459	75.77	116.96	7.40	29.56	109.60	2.43	13.78	21.39	1.61	16.60	2.66	7.48	1.06	6.50	0.88
CPO-00460	67.41	92.46	4.72	22.91	83.80	2.07	12.03	17.05	1.37	13.95	2.35	6.47	0.89	5.50	0.77
CPO-00461	N.A.	N.A.	N.A.	N.A.	N.A.	N.A.	N.A.	N.A.	N.A.	N.A.	N.A.	N.A.	N.A.	N.A.	N.A.
CPO-00462	84.07	79.14	5.51	18.95	69.60	2.37	13.96	15.37	1.29	14.97	2.68	7.44	1.05	6.30	0.85
CPO-00463	78.48	97.90	4.76	23.99	87.60	2.35	13.55	18.01	1.47	15.48	2.62	7.31	1.01	6.20	0.83
CPO-00464	103.13	116.58	5.88	28.15	103.10	2.92	17.17	21.78	1.75	19.23	3.35	9.31	1.29	7.90	1.08
CPO-00465	79.89	87.07	5.13	21.01	77.10	2.35	13.78	16.63	1.33	15.08	2.65	7.52	1.03	6.30	0.85
CPO-00466	51.00	51.68	3.37	12.26	45.00	1.46	8.47	9.89	0.82	9.25	1.68	4.65	0.64	3.80	0.51
CPO-00467	107.53	97.95	6.96	23.21	85.20	2.89	17.11	18.82	1.57	18.21	3.31	9.25	1.25	7.70	1.06
CPO-00468	63.45	54.21	4.28	12.81	47.30	1.70	10.02	10.72	0.85	10.66	1.99	5.56	0.75	4.50	0.62
CPO-00469	69.38	53.36	3.12	11.19	41.50	1.63	9.92	9.20	0.78	10.33	2.04	5.64	0.79	4.50	0.63
CPO-00470	30.66	19.45	1.06	3.20	12.40	0.54	3.31	2.47	0.20	3.51	0.76	2.21	0.28	1.60	0.23
CPO-00482	2.79	5.39	5.63	1.25	4.70	<0.08	0.36	0.84	0.09	0.54	0.07	0.20	0.02	<0.4	<0.04
CPO-00483	2.18	6.13	7.23	1.49	5.40	<0.08	0.38	0.99	0.11	0.62	0.07	0.17	0.02	<0.4	<0.04
CPO-00484	2.68	8.19	10.08	2.01	7.30	0.10	0.55	1.28	0.15	0.84	0.10	0.27	0.04	<0.4	<0.04
CPO-00485	1.93	5.85	7.33	1.43	5.10	0.08	0.40	0.92	0.10	0.60	0.07	0.20	0.03	<0.4	<0.04
CPO-00486	2.71	7.56	9.15	2.13	6.60	0.30	0.68	1.35	0.36	1.00	0.23	0.36	0.13	<0.4	0.10
CPO-00487	2.20	6.61	8.33	1.69	5.90	0.09	0.47	1.11	0.11	0.71	0.11	0.23	0.05	<0.4	0.04
CPO-00488	0.94	2.81	2.30	0.53	<2.4	<0.08	0.17	0.30	0.05	0.21	0.04	0.07	0.02	<0.4	<0.04
CPO-00487	1.64	5.11	6.63	1.29	4.60	<0.08	0.38	0.82	0.11	0.55	0.08	0.19	0.03	<0.4	<0.04

personal use only



JORC CODE, 2012 Edition Table 1

Section 1: Sampling Techniques and Data

Criteria	JORC Code explanation	Commentary
Sampling techniques	<ul style="list-style-type: none"> Nature and quality of sampling (eg cut channels, random chips, or specific specialised industry standard measurement tools appropriate to the minerals under investigation, such as down hole gamma sondes, or handheld XRF instruments, etc). These examples should not be taken as limiting the broad meaning of sampling. Include reference to measures taken to ensure sample representivity and the appropriate calibration of any measurement tools or systems used. Aspects of the determination of mineralisation that are Material to the Public Report. In cases where 'industry standard' work has been done this would be relatively simple (eg 'reverse circulation drilling was used to obtain 1 m samples from which 3 kg was pulverised to produce a 30 g charge for fire assay'). In other cases, more explanation may be required, such as where there is coarse gold that has inherent sampling problems. Unusual commodities or mineralisation types (eg submarine nodules) may warrant disclosure of detailed information. 	<ul style="list-style-type: none"> Samples utilised in this report are collected from recently drilled mechanised auger drilling, locally known as Trado, a geochemical sampling method and a standard method for mineral exploration in weathered terrains in Brazil. The samples collected are representative of the material being drilled by the auger. Channels were also collected where road cuttings and other excavations provided a profile suitable to sample. Drill samples are collected as 1m intervals, or less where an obvious geological change occurs. Intervals are measured by the operators, the whole sample from the interval is homogenised and then quartered. One portion is collected as the representative sample for assay from the 1m interval. The representative samples collected for original assay averaged approximately 2kg in weight. The assay samples are prepared for assay, crushed to 75% passing 3mm, then a 250g split is pulverised to >95% passing 150# (~0.105mm) with 50g split for final assay. Following review of results. selected metallurgical samples, reported here, were submitted to an SGS Geosol extraction procedure for clay mineral samples, specifically ionic clays, that combines controlled steps of standardized chemical leaching with instrumental analysis by ICP-MS.
Drilling techniques	<ul style="list-style-type: none"> Drill type (eg core, reverse circulation, open-hole hammer, rotary air blast, auger, Bangka, sonic, etc) and details (eg core diameter, triple or standard tube, depth of diamond tails, face-sampling bit or other type, whether core is oriented and if so, by what method, etc). 	<ul style="list-style-type: none"> Auger drilling was completed using a mechanised handheld auger, resulting in a 4-inch (10cm) diameter hole. All holes were drilled vertically. The maximum depth achieved was 18 meters, the minimum was 4 meters, and the average was 13.14 meters. Final depths were recorded according to the length of rods in the hole.



personal use only

Criteria	JORC Code explanation	Commentary
		<ul style="list-style-type: none"> The drilling is an open hole method, meaning there is a significant chance of some contamination from the surface and other parts of the auger hole. Holes are vertical and not oriented.
Drill sample recovery	<ul style="list-style-type: none"> Method of recording and assessing core and chip sample recoveries and results assessed. Measures taken to maximise sample recovery and ensure representative nature of the samples. Whether a relationship exists between sample recovery and grade and whether sample bias may have occurred due to preferential loss/gain of fine/coarse material. 	<ul style="list-style-type: none"> Samples were geologically logged in the field during drilling Sample recovery was not recorded The auger drilling provides a close to 100% sample recovery, there is no known relationship to sample recovery and the assay result.
Logging	<ul style="list-style-type: none"> Whether core and chip samples have been geologically and geotechnically logged to a level of detail to support appropriate Mineral Resource estimation, mining studies and metallurgical studies. Whether logging is qualitative or quantitative in nature. Core (or costean, channel, etc) photography. The total length and percentage of the relevant intersections logged. 	<ul style="list-style-type: none"> Samples were geologically logged in the field during drilling. They do not support a Mineral Resource Estimation, mining studies or metallurgical studies.
Sub-sampling techniques and sample preparation	<ul style="list-style-type: none"> If core, whether cut or sawn and whether quarter, half or all core taken. If non-core, whether riffled, tube sampled, rotary split, etc and whether sampled wet or dry. For all sample types, the nature, quality and appropriateness of the sample preparation technique. Quality control procedures adopted for all sub-sampling stages to maximise representivity of samples. 	<ul style="list-style-type: none"> Sub sampling by quartering of the original drill sample is best practice for this type of sample. The damp nature of the clay material means “splitting” via riffle or rotary method is not possible. The manual quartering is appropriate for the nature of the samples. Sample size is appropriate for the material being sampled. Upon arrival at the lab, samples were dried at 105°C, crushed to 75% less than 3 mm, homogenised, and passed through a Jones riffle splitter (250g to 300g). This aliquot is then pulverised in a steel mill until over 95% had a size of 150 microns



personal use only

Criteria	JORC Code explanation	Commentary
	<ul style="list-style-type: none"> Measures taken to ensure that the sampling is representative of the in situ material collected, including for instance results for field duplicate/second-half sampling. Whether sample sizes are appropriate to the grain size of the material being sampled. 	
Quality of assay data and laboratory tests	<ul style="list-style-type: none"> The nature, quality and appropriateness of the assaying and laboratory procedures used and whether the technique is considered partial or total. For geophysical tools, spectrometers, handheld XRF instruments, etc, the parameters used in determining the analysis including instrument make and model, reading times, calibrations factors applied and their derivation, etc. Nature of quality control procedures adopted (eg standards, blanks, duplicates, external laboratory checks) and whether acceptable levels of accuracy (ie lack of bias) and precision have been established. 	<ul style="list-style-type: none"> The assay technique used by SGS Geosol Laboratory during initial sampling was IMS95A for 48 elements, is a complete digest using the Lithium Borate Fusion technique. This is a standard industry practice for REE assay. Company blanks and duplicates were used to ensure 10% of the samples were QA/QC samples. The laboratory uses Certified Reference Material (CRM), repeats and blanks to ensure QAQC requirements are met. No issues have been identified for any of the samples reported. Following the assessment of original drill sample assay results the Metallurgical samples were selected. The analytical chain begins with drying the samples at 105 °C, followed by homogenization, quartering, and dry sieving at 4mm. The passing fraction is again homogenized, and a 150g aliquot is directed to the leaching test, while the remainder is archived as a reserve. The leaching process begins with a 40-gram portion of the sample being subjected to 160 ml of a 0.5 mol/L ammonium sulphate solution at room temperature. Leaching occurs for 30 minutes. After this period, the pulp is filtered using a vacuum pump. The resulting residue is then washed with 80 ml of a 0.1% ammonium sulphate solution. An aliquot of the filtered solution is taken and diluted 25-fold with 2% HNO₃. The solution thus obtained is finally analysed by ICP-MS.
Verification of sampling and assaying	<ul style="list-style-type: none"> The verification of significant intersections by either independent or alternative company personnel. The use of twinned holes. 	<ul style="list-style-type: none"> Significant results are reported here and are confirmed from data supplied, by PVW staff and consulting geologists. No Twin holes.



personal use only

Criteria	JORC Code explanation	Commentary																																																
	<ul style="list-style-type: none"> Documentation of primary data, data entry procedures, data verification, data storage (physical and electronic) protocols. Discuss any adjustment to assay data. 	<ul style="list-style-type: none"> Primary data is imported via a modern database administration process with security and QA QC protocols applied. The only adjustments to the data were made to transform the elemental values into the oxide values. The conversion factors used are included in the table below. <table border="1" data-bbox="1312 568 1926 1118"> <thead> <tr> <th>Element</th> <th>Oxide</th> <th>Factor</th> </tr> </thead> <tbody> <tr><td>Ce</td><td>CeO₂</td><td>1.2283</td></tr> <tr><td>La</td><td>La₂O₃</td><td>1.1728</td></tr> <tr><td>Sm</td><td>Sm₂O₃</td><td>1.1596</td></tr> <tr><td>Nd</td><td>Nd₂O₃</td><td>1.1664</td></tr> <tr><td>Pr</td><td>Pr₆O₁₁</td><td>1.2078</td></tr> <tr><td>Dy</td><td>Dy₂O₃</td><td>1.1477</td></tr> <tr><td>Eu</td><td>Eu₂O₃</td><td>1.1579</td></tr> <tr><td>Tb</td><td>Tb₄O₇</td><td>1.1510</td></tr> <tr><td>Gd</td><td>Gd₂O₃</td><td>1.1526</td></tr> <tr><td>Ho</td><td>Ho₂O₃</td><td>1.1455</td></tr> <tr><td>Er</td><td>Er₂O₃</td><td>1.1435</td></tr> <tr><td>Tm</td><td>Tm₂O₃</td><td>1.1421</td></tr> <tr><td>Yb</td><td>Yb₂O₃</td><td>1.1387</td></tr> <tr><td>Lu</td><td>Lu₂O₃</td><td>1.1371</td></tr> <tr><td>Y</td><td>Y₂O₃</td><td>1.2699</td></tr> </tbody> </table> Weighted averages of samples >500 ppm TREO were used to calculate significant intercepts. 	Element	Oxide	Factor	Ce	CeO ₂	1.2283	La	La ₂ O ₃	1.1728	Sm	Sm ₂ O ₃	1.1596	Nd	Nd ₂ O ₃	1.1664	Pr	Pr ₆ O ₁₁	1.2078	Dy	Dy ₂ O ₃	1.1477	Eu	Eu ₂ O ₃	1.1579	Tb	Tb ₄ O ₇	1.1510	Gd	Gd ₂ O ₃	1.1526	Ho	Ho ₂ O ₃	1.1455	Er	Er ₂ O ₃	1.1435	Tm	Tm ₂ O ₃	1.1421	Yb	Yb ₂ O ₃	1.1387	Lu	Lu ₂ O ₃	1.1371	Y	Y ₂ O ₃	1.2699
Element	Oxide	Factor																																																
Ce	CeO ₂	1.2283																																																
La	La ₂ O ₃	1.1728																																																
Sm	Sm ₂ O ₃	1.1596																																																
Nd	Nd ₂ O ₃	1.1664																																																
Pr	Pr ₆ O ₁₁	1.2078																																																
Dy	Dy ₂ O ₃	1.1477																																																
Eu	Eu ₂ O ₃	1.1579																																																
Tb	Tb ₄ O ₇	1.1510																																																
Gd	Gd ₂ O ₃	1.1526																																																
Ho	Ho ₂ O ₃	1.1455																																																
Er	Er ₂ O ₃	1.1435																																																
Tm	Tm ₂ O ₃	1.1421																																																
Yb	Yb ₂ O ₃	1.1387																																																
Lu	Lu ₂ O ₃	1.1371																																																
Y	Y ₂ O ₃	1.2699																																																
Location of data points	<ul style="list-style-type: none"> Accuracy and quality of surveys used to locate drill holes (collar and down-hole surveys), trenches, mine workings and other locations used in Mineral Resource estimation. Specification of the grid system used. 	<ul style="list-style-type: none"> A handheld GPS is initially used to collect location data for the auger drilling, and the coordinates are further confirmed with an RTX device, which has an average vertical resolution of 0.175 cm. SIRGAS2000 UTM 22S has been used in Project maps, with WGS84 Lat/Long used in the country scale maps. 																																																



personal use only

Criteria	JORC Code explanation	Commentary
	<ul style="list-style-type: none"> Quality and adequacy of topographic control. 	<ul style="list-style-type: none"> Quality and adequacy of the topographic control suits the reconnaissance nature of the exploration activities.
Data spacing and distribution	<ul style="list-style-type: none"> Data spacing for reporting of Exploration Results. Whether the data spacing and distribution is sufficient to establish the degree of geological and grade continuity appropriate for the Mineral Resource and Ore Reserve estimation procedure(s) and classifications applied. Whether sample compositing has been applied. 	<ul style="list-style-type: none"> The drill auger hole samples serve as preliminary reconnaissance yet, with spacing mostly at intervals of approximately 800 meters, and reduced to around 400 meters in certain localities. Data spacing is not sufficient to establish grade or geological continuity. No compositing has been applied.
Orientation of data in relation to geological structure	<ul style="list-style-type: none"> Whether the orientation of sampling achieves unbiased sampling of possible structures and the extent to which this is known, considering the deposit type. If the relationship between the drilling orientation and the orientation of key mineralised structures is considered to have introduced a sampling bias, this should be assessed and reported if material. 	<ul style="list-style-type: none"> Drilling is vertical and the targeted clay horizons, hosting the REE mineralisation, are close to horizontal hence unbiased sampling is inferred. Unknown at this stage if orientation introduces any bias or not in relation to possible structural controls.
Sample security	<ul style="list-style-type: none"> The measures taken to ensure sample security. 	<ul style="list-style-type: none"> Samples were collected, stored and transported with the company undertaking the exploration activities hence all activities were considered secure.
Audits or reviews	<ul style="list-style-type: none"> The results of any audits or reviews of sampling techniques and data. 	<ul style="list-style-type: none"> A Scanty Senior Technician has supervised the drilling, sampling, data collection and data administration activities under direct supervision of Scanty management. There have been no issues recognized to date. Exploration and data management has been to a very high standard.

Section 2: Reporting of Exploration Results



personal use only

Criteria	JORC Code explanation	Commentary
Mineral tenement and land tenure status	<ul style="list-style-type: none"> Type, reference name/number, location and ownership including agreements or material issues with third parties such as joint ventures, partnerships, overriding royalties, native title interests, historical sites, wilderness or national park and environmental settings. The security of the tenure held at the time of reporting along with any known impediments to obtaining a license to operate in the area. 	<ul style="list-style-type: none"> The following Tenement Numbers are shown in the report, 820.677/2023, 820.678/2023, 820.679/2023, 820.680/2023. PVW has reviewed the publicly available information on the government websites confirms the tenements are in good standing. No environmental restrictions or access restrictions with holders of surface rights have limited exploration to date. No limitations to exploration are known at this stage.
Exploration done by other parties	<ul style="list-style-type: none"> Acknowledgment and appraisal of exploration by other parties. 	<ul style="list-style-type: none"> Data available to PVW at this stage is limited to regional geological mapping and interpretation and Airborne geophysics. There are combined aeromagnetic and radiometric surveys which cover the area. These were flown by Brazilian Government Agencies and are broad spaced and useful for regional context. Exploration undertaken by Scanty and by Future Mining prior to the transaction has been reviewed and reported here for the relevant projects. Information on projects is continually being reviewed and appraised.
Geology	<ul style="list-style-type: none"> Deposit type, geological setting and style of mineralisation. 	<ul style="list-style-type: none"> The mineralisation specific to this report is clay hosted REE mineralisation hosted by the saprolitic clay dominated weathering products of the Capão Bonito Granite. The ionic adsorption clay (IAC) nature of the REE mineralisation can be assumed due to the nature of the clay dominant saprolitic sample and the alkaline granite protolith, however additional chemical, mineralogical, and metallurgical testwork will be required to confirm the IAC nature of the REE mineralisation.



Criteria	JORC Code explanation	Commentary
Drill hole information	<ul style="list-style-type: none"> • A summary of all information material to the understanding of the exploration results including a tabulation of the following information for all Material drill holes: <ul style="list-style-type: none"> ○ easting and northing of the drill hole collar ○ elevation or RL (Reduced Level – elevation above sea level in metres) of the drill hole collar ○ dip and azimuth of the hole ○ down hole length and interception depth ○ hole length • If the exclusion of this information is justified on the basis that the information is not Material and this exclusion does not detract from the understanding of the report, the Competent Person should clearly explain why this is the case. 	<ul style="list-style-type: none"> • Drill hole details and sample attributes are included in the report as a Collar table, and results table. All holes are vertical.
Data aggregation methods	<ul style="list-style-type: none"> • In reporting Exploration Results, weighting averaging techniques, maximum and/or minimum grade truncations (e.g. cutting of high grades) and cut-off grades are usually Material and should be stated. • Where aggregate intercepts incorporate short lengths of high grade results and longer lengths of low grade results, the procedure used for such aggregation should be stated and some typical examples of such aggregations should be shown in detail. • The assumptions used for any reporting of metal equivalent values should be clearly stated. 	<ul style="list-style-type: none"> • Significant intercepts were calculated using values > 500 ppm TREO only in consecutive intervals of saprolite samples originally sampled meter by meter. No upper cuts were used. • Weighted averages were calculated for all intercepts.
Relationship between mineralisation widths and intercept lengths	<ul style="list-style-type: none"> • These relationships are particularly important in the reporting of Exploration Results. • If the geometry of the mineralisation with respect to the drill hole angle is known, its nature should be reported. • If it is not known and only the down hole lengths are reported, there should be a clear statement to this effect (e.g. 'down hole length, true width not known'). 	<ul style="list-style-type: none"> • The mineralisation reported is related to weathered granite, specifically saprolite weathered from granite. The weathering profile is assumed to be close to horizontal (perpendicular to drilling and channel sampling) or following the natural surface, however structures may cause as yet unknown irregularities and controls. • Down hole lengths and the channel lengths are reported and true width is not known.

personal use only



personal use only

Criteria	JORC Code explanation	Commentary
Diagrams	<ul style="list-style-type: none"> Appropriate maps and sections (with scales) and tabulations of intercepts should be included for any significant discovery being reported. These should include, but not be limited to a plan view of drill hole collar locations and appropriate sectional views. 	<ul style="list-style-type: none"> Appropriate maps are included in the report. The very wide spaced reconnaissance nature of the drilling precluded the usefulness of sections at this stage.
Balanced Reporting	<ul style="list-style-type: none"> Where comprehensive reporting of all Exploration Results is not practicable, representative reporting of both low and high grades and/or widths should be practiced to avoid misleading reporting of Exploration Results. 	<ul style="list-style-type: none"> All recovery results reporting MREO recoveries >50% are listed and the location of all holes tested are shown on the relevant figures.. In the context of desorption/leaching tests, such as the SGS Geosol ICM694 method, it is possible for a small portion of the samples to show specific recovery results exceeding 100%. This occurrence, although it may seem counterintuitive, is a known phenomenon in semi-quantitative and rapid screening analytical methodologies, especially in the early stages of research, and can be attributed to several factors: <ul style="list-style-type: none"> Although efforts are made to homogenize the samples, the small analytical portion used in the laboratory may, by chance, contain a localized concentration of adsorbed REEs (Rare Earth Elements) marginally higher than that determined in the aliquot designated for the bulk chemical analysis used as the feed reference. Another point is related to sample representativeness. In determining total rare earths, we use the pulverized sample 95% below 150 mesh, and in leaching, the top-size is 4 mm. As it comprises 2 analytical methods: the first for determining total REEs (ICM95A) and the second for leaching (ICM694). Each of these methods has its own uncertainty/imprecision. Eventually, the combination of these uncertainties can result in a desorption calculation exceeding 100%. Small variations in laboratory process parameters (temperature, agitation, reagent concentration, etc., within the method's tolerances) can lead to a slight overestimation of the final leached value for some samples, especially those with high grades or near detection limits.



Criteria	JORC Code explanation	Commentary
Other substantive exploration data	<ul style="list-style-type: none"> Other exploration data, if meaningful and material, should be reported including (but not limited to): geological observations; geophysical survey results; geochemical survey results; bulk samples - size and method of treatment; metallurgical test results; bulk density, groundwater, geotechnical and rock characteristics; potential deleterious or contaminating substances. 	<ul style="list-style-type: none"> No other exploration data or metallurgical testwork is available in relation to this project.
Further work	<ul style="list-style-type: none"> The nature and scale of planned further work (e.g. tests for lateral extensions or depth extensions or large- scale step-out drilling). Diagrams clearly highlighting the areas of possible extensions, including the main geological interpretations and future drilling areas, provided this information is not commercially sensitive. 	<ul style="list-style-type: none"> Infill drilling at 400-meter intervals as a guide for a future drilling campaign, potentially using Air Core (AC) drilling Detailed ground geophysics will all be applied in the next phase of exploration.

personal use only



Section 3: Estimation and Reporting of Mineral Resources

Not applicable

Section 4: Estimation and Reporting of Ore Reserves

Not applicable

personal use only