

ASSAYS CONFIRM FURTHER KAMEELBURG EXPANSION & RIG PURCHASE

Highlights

- Aldoro continue to build on the Kameelburg Niobium and REE deposit with another three mineralised holes adding towards the delivery of the Maiden Resource Estimate
- Assays for diamond holes DD002A, DD003 & DD006B have been received and confirm the mineralisation comprising Rare Earth (REE), Niobium (Nb) and Molybdenum (Mo) at Kameelburg extends circa 300 meters to the north of the existing discovery zone.
- Assays for DD002A, DD003 & DD006B all ended in mineralisation and provide further encouragement that the Kameelburg discovery has the potential to expand further with deeper drilling.

- Significant new intercepts for DD002A, DD003 & DD006B include:

DD002A – 446m

Upper Layer REE dominant

- Combined 193m at 1.74% TREO, 0.23% Nb₂O₅ and 229ppm Mo

Lower Layer Nb dominant

- Combined 46m at 0.76% TREO & 0.45% Nb₂O₅

DD003 – 350m

Upper Layer REE dominant

- Combined 35m at 1.60% TREO, 0.28% Nb₂O₅ and 225ppm Mo

Lower Layer Nb dominant

- Combined 30m 0.81% TREO & 0.46% Nb₂O₅ in addition to
- Combined 58m 0.92% TREO & 0.28% Nb₂O₅

DD006B – 429m

Upper Layer REE dominant

- Combined 10m at 2.78% TREO, 0.24% Nb₂O₅ and 88ppm Mo

Lower Layer Nb dominant

- Combined 330m 0.95% TREO & 0.27% Nb₂O₅ and 130ppm Mo

- The Phase I drilling program has been expanded to incorporate up to an additional 3 diamond holes (DD008, DD008A & DD008B) for circa 1,200 meters with the aim to test the southern extent of mineralisation across the Kameelburg carbonatite.
- Additional assays have arrived in country and are expected to be processed by mid-July.

- **Agreement to acquire two additional brand-new diamond drilling rigs that will arrive at Kameelburg in September and will importantly allow Aldoro to increase the drilling depth from the current maximum of 510 meters to circa ~740 meters with the new rig representing a ~40% increase. The rigs purchased are:**
 - **Nock 600 – Capable of diamond drilling down to 510 meters**
 - **Nock 800 – Capable of diamond drilling down to 740 meters**
 - **Drill rods for 15,000 meters of additional drilling**
- **Non-Executive Director Edwin Bulseco retires from the Aldoro board.**

Aldoro Resources Ltd (“Aldoro”, “The Company”) (ASX: ARN) is pleased to advise that the assay results for diamond drill holes DD002A, DD003 and DD006B (collectively “**Assayed Diamond Holes**”) have been received and confirm a ~300 meter northerly extension to mineralisation at the strategic polymetallic discovery at Kameelburg comprising Rare Earth (REE), Niobium and Molybdenum (Mo) within the Kameelburg Carbonatite (see *ARN ASX announcement 30th April 2025*).

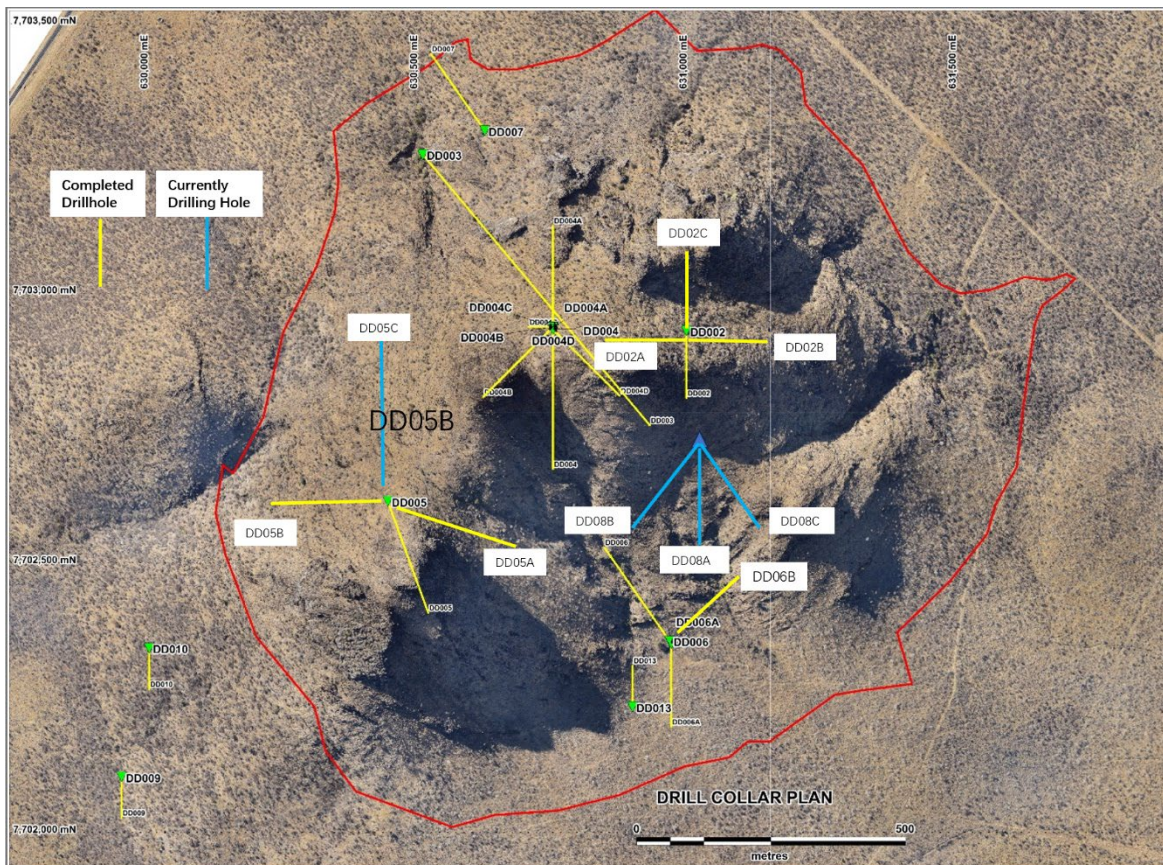


Figure 1: Diamond drill hole plan view

For personal use only

Diamond Hole Assays – DD002A, DD003 & DD006B

Assays have confirmed that diamond drill hole DD002A (446 m), DD003 (350m) and DD006B (429m) encountered significant and continuous mineralisation throughout the entire drill core.

All Assayed Diamond Holes **ended in mineralisation, which remains open at depth.**

Assay grades across the three diamond holes have utilised a 1% TREEO cut-off grade and are illustrated as follows. *Please refer appendix 1 for full assay details.*

The mineralisation appears to be controlled by semi massive to massive magnetite zones, crustal contaminations where mafic fragment/xenoliths are significant and incorporated in the Beforsite carbonatite.

Major rare earth minerals are Bastnaesite and Ancylyte.

Drilling Cross Section Showing the Mineralisation Zoning

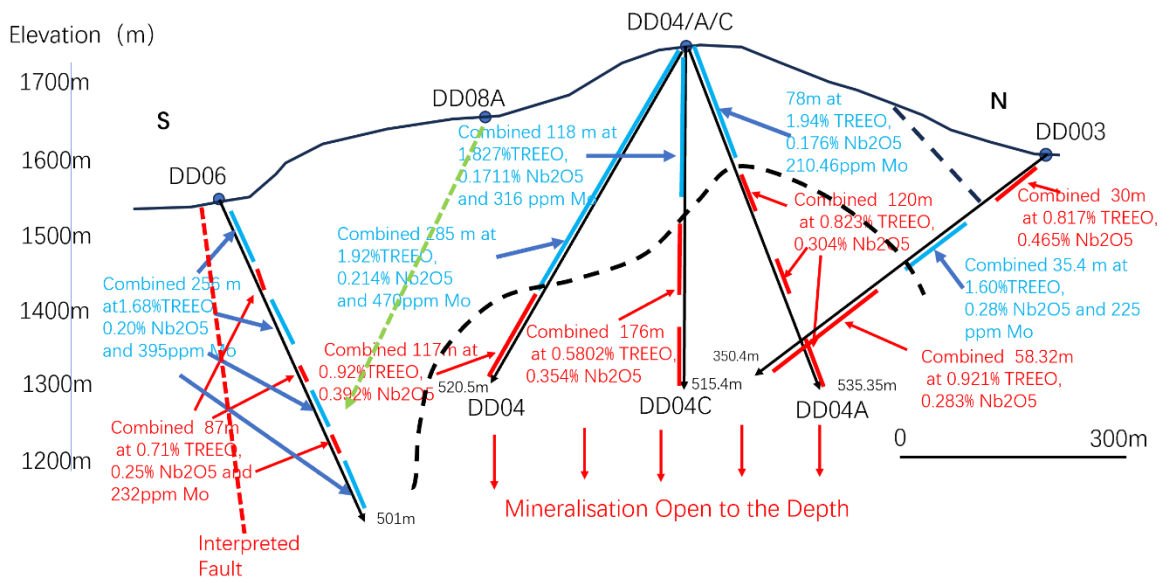


Figure 2: Drilling Cross Section illustrating Upper-Lower level zoning across DD006 through DD003.

For personal use only

Drilling Cross Section Showing the Mineralisation Zoning

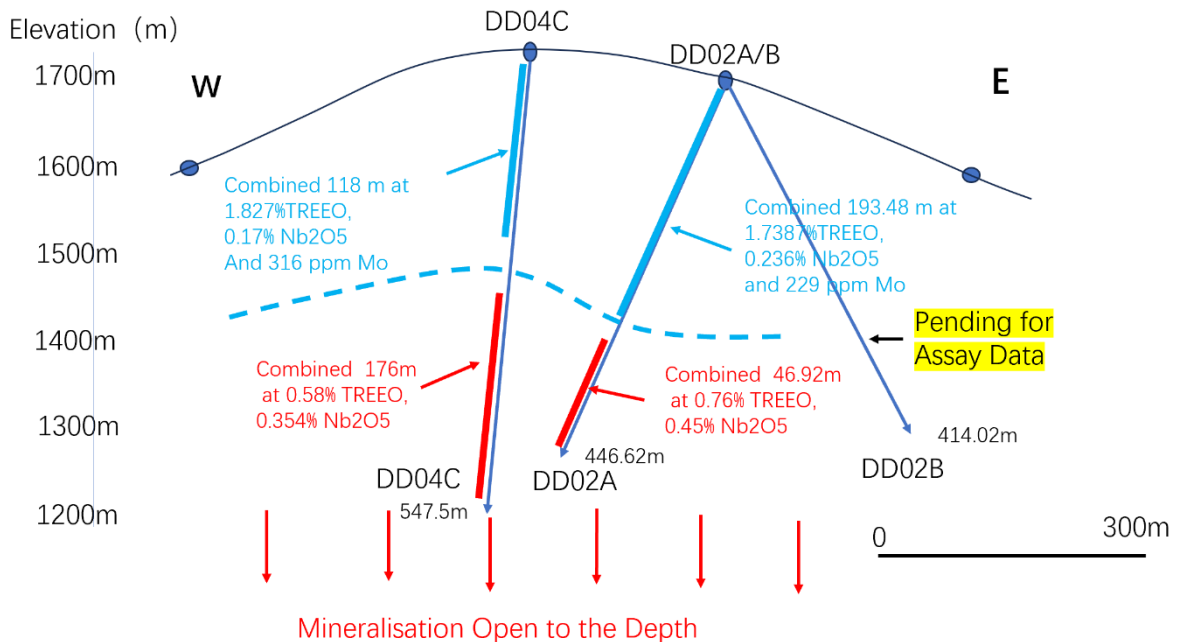


Figure 3: W-E Drilling Cross Section through DD002A demonstrates a ~ 200-meter eastern extension of mineralisation. .

Assays from DD003 confirms that mineralisation extends at least 300 meters in length to the north and 500 meters in depth whilst continuing to remain open in both directions.

Assays from DD002A demonstrate mineralisation extension of circa 200 meters to the furthest known eastern mineralisation.

To date assays have confirmed Kameelburg footprint extends 1.0km long by 550m wide and 510m deep noting mineralisation remains open at depth and assays for south-east step out holes remain pending.

As additional assays are being received the understanding of mineralisation composition of the carbonatite is improving.

Aldoro has elected **to increase the Phase I drilling program by an additional 3 holes** which will allow it to improve resource certainty to the south-east.

Drilling Update

The Phase 1 drilling is progressing well with 20 diamond holes completed for a total of 7,990 meters with up to a further 3 holes remaining to be completed. A summary of drilling to date is as follows:

For personal use only

Collar_ ID	WGS84 UTM Zone	Easting	Northing	Elevation	Azimuth	Dip (degrees)	Planned depth (m)	Actual drilled depth (m)	Assay Status
DD002	33K	630998	7702930	1687	180	-65	200	295.00	Received
DD005	33K	630444	7702614	1706	160	-60	400	440.00	Received
DD004	33K	630751	7702934	1735	180	-60	520	520.50	Received
DD004A	33K	630751	7702938	1735	360	-70	500	547.50	Received
DD004B	33K	630750	7702937	1735	225	-70	500	535.35	Received
DD004C	33K	630750	7702937	1735	270	-85	500	515.40	Received
DD004D	33K	630751	7702933	1735	135	-70	500	510.00	Received
DD009	33K	629950	7702103	1504	180	-65	180	180.00	Awaited
DD010	33K	630001	7702342	1535	180	-65	180	180.40	Awaited
DD013	33K	630898	7702233	1539	360	-65	180	180.40	Received
DD006	33K	630967	7702355	1540	325	-65	500	501.00	Received
DD006A	33K	630970	7702351	1538	180	-70	500	453.07	Received
DD007	33K	630624	7703301	1572	325	-65	500	412.50	Awaited
DD003	33K	630509	7703257	1525	140	-35	350	350.42	Received
DD06B	33K	630973	7702358	TBC	50	-65	500	429.00	Received
DD02A	33K	630998	7702930	TBC	270	60	500	446.62	Received
DD02B	33K	630998	7702930	TBC	90	60	500	414.02	Awaited
DD05A	33K	630444	7702614	TBC	115	40	800	377.05	Awaited
DD02C	33K	630998	7702929	TBC	90	60	500	303.20	Awaited
DD005B	33K	630453	7702622	TBC	1705	230	500	399.02	Awaited
DD008	33K	TBC							
DD08A	33K	TBC							
DD008B	33K	TBC							

Total 7990.45

Table 1: Phase 1 drilling summary.

Diamond Drilling Rig Acquisition

The Company has agreed to purchase two Nock diamond drill rigs and sufficient drill rods to drill 15,000 meters and allow it to expedite resource definition at the Kameelburg project.

There is currently significant demand for drill rigs in Namibia due to the amount of exploration currently occurring for gold and uranium making it difficult for the Company to secure drilling services in a timely manner nor at the cost at which it can operate its own drill rigs.

The acquisition of these two rigs will see the Company in a strong position to expand on the depth that it is currently able to drill which is circa 500 meters in depth. The new rigs will allow the Company to drill to a depth of 700+ meters whilst also having an additional rig to focus on the adjacent carbonatite that has been discovered.

The models purchased are as follows and are expected to arrive at Kameelburg along with drilling consumables and spares in September:

- 1 x Nock 800 Diamond Drilling Rig
- 1 x Nock 600 Diamond Drilling Rig

The cost of both diamond rigs along with consumables, drill rods sufficient to drill 15,000 meters and generators is A\$800,000. Aldoro will pay for the rigs in two tranches.

For personal use only

The first tranche will be \$400,000 in ARN shares priced at 31.3 cents which is the 20-day VWAP and represents 1,277,955 shares. This tranche of shares will be issued from the placement capacity under listing rule 7.1A.

The second tranche payment of \$400,000 can be made in the next 12 months either by cash or by shares at the suppliers election noting that if shares are elected as the form of consideration then the issue price will be 31.3 cents per share representing 1,277,955 shares.

Aldoro will bear the international shipping costs, Namibian import duties, and local transport fees in relation to landing the rigs into Kameelburg.

Director Retirement

Non-Executive Director, Mr Edwin Bulseco wishes to announce his retirement from the board to focus on other business commitments effective from 1 July 2025. Mr Bulseco was appointed to the Aldoro Board on 26 August 2024.

Mr Bulseco commented, "It has been a pleasure working with the Aldoro team during a challenging period and having a front row seat to the significant turnaround in the past 10 months. I look forward to watching the company continuing to grow shareholder value and have every confidence in the current team to do so".

The Board would like to thank Edwin Bulseco for his contribution and wish him all the best with future endeavours.

Authorised for and on behalf of the Board,

Sarah Smith
Company Secretary

About Aldoro Resources

Aldoro Resources Ltd is an ASX-listed (**ASX: ARN**) mineral exploration and development company. Aldoro has a portfolio of critical minerals including rare earth, lithium, rubidium and base metal projects. The Company's suite of projects include the Kameelburg REE & Niobium Project in Namibia, the Wyemandoo lithium-rubidium-tungsten project, the Niobe lithium-rubidium-tantalum project and the Narndee Igneous Complex project in Western Australia.

Disclaimer

Some of the statements appearing in this announcement may be in the nature of forward-looking statements. You should be aware that such statements are only predictions and are subject to inherent risks and uncertainties. Those risks and uncertainties include factors and risks specific to the industries in which Aldoro operates and proposes to operate as well as general economic conditions, prevailing exchange rates and interest rates and conditions in the financial markets, among other things. Actual events or results may differ materially from the events or results expressed or implied in any forward-looking statement. No forward-looking statement is a guarantee or representation as to future performance or any other future matters, which will be influenced by a number of factors and subject to various uncertainties and contingencies, many of which will be outside Aldoro's control.

For personal use only

Aldoro does not undertake any obligation to update publicly or release any revisions to these forward-looking statements to reflect events or circumstances after today's date or to reflect the occurrence of unanticipated events. No representation or warranty, express or implied, is made as to the fairness, accuracy, completeness or correctness of the information, opinions or conclusions contained in this announcement. To the maximum extent permitted by law, none of Aldoro, its Directors, employees, advisors or agents, nor any other person, accepts any liability for any loss arising from the use of the information contained in this announcement. You are cautioned not to place undue reliance on any forward-looking statement. The forward-looking statements in this announcement reflect views held only as of the date of this announcement.

This announcement is not an offer, invitation or recommendation to subscribe for or purchase securities by Aldoro. Nor does this announcement constitute investment or financial product advice (nor tax, accounting or legal advice) and is not intended to be used for the basis of making an investment decision. Investors should obtain their own advice before making any investment decision.

Competent Person Statement

The information in this announcement that relates to Exploration Results and other technical information is based on information compiled by Dr Minlu Fu (a non-executive director of the Company) and complies with the 2012 Edition of the Australasian Code for Reporting of Exploration Results, Mineral Resources and Ore Reserves (JORC Code). It has been reviewed by Mr Jeremy Clark and Mr Mark Mitchell. Mr. Mark Mitchell is a Member of the Australasian Institute of Geoscientists (AIG). Mr Mitchell is an independent consultant and not an employee of Aldoro and has sufficient experience that is relevant to the style of mineralisation and type of deposit under consideration and to the activity being undertaken to qualify as a Competent Person as defined in the 2012 Edition of the JORC Code. Mr Mitchell consents to the inclusion in this announcement of the matters based on his information in the form and context in which it appears.

For personal use only

Appendix 1: Down hole assays – Lanthanides, Yttrium, Niobium and Molybdenite

Drill Collar DD002A (Dominant Mineralisation highlighted **REE Nb**)

Hole_ID	Sample No	Depth_From (m)	Depth_To (m)	Ce ppm	Dy ppm	Er ppm	Eu ppm	Gd ppm	Ho ppm	La ppm	Lu ppm	Nd ppm	Pr ppm	Sm ppm	Tb ppm	Tm ppm	Y ppm	Yb ppm	Nb ppm	Mo ppm	TREO%	Nb2O5%	NdPr%
DD002A	DD002A-001	0	2	542.5	19.8	9.1	9.1	26.2	3.5	326	1.4	190	56.4	30.6	3.4	1.5	97.9	11.1	505	45	0.16	0.05	18.42%
DD002A	DD002A-002	2	3	1117	29.1	10.2	14	37.8	4.7	818.7	0.7	325	107	46.7	5.3	1.2	127	6	264	79	0.31	0.10	16.20%
DD002A	DD002A-003	3	4	2969	66.1	23	31	84.3	10.5	2015	2.1	828	278	107	12	3	267.8	16.9	187	61	0.79	0.10	16.37%
DD002A	DD002A-004	4	5	3501	121.2	41.7	46	138	19.2	2638	3.8	925	319	140	23	5.3	481	31.1	158	74	0.99	0.13	14.65%
DD002A	DD002A-005	5	6.54	13948	64.1	15.5	78.2	167	8.1	10307	1.1	3341	1210	330	17	1.9	186.4	8.7	1043	237	3.48	0.08	15.28%
DD002A	DD002A-006	6.54	7.45	8519	38.5	8.4	50.1	102	4.5	5894	0.6	2348	810	224	11	1	103.7	5.1	1258	288	2.12	0.20	17.37%
DD002A	DD002A-007	7.45	8.25	8630	150.2	39.3	88	234	20.1	6228	2.7	2451	826	317	32	4.2	488.7	21.9	2024	352	2.29	0.12	16.70%
DD002A	DD002A-008	8.25	9	13197	28.2	6.6	56.3	111	3.1	10978	0.4	2705	1065	247	9.3	0.6	74.2	3.6	1810	392	3.34	0.25	13.19%
DD002A	DD002A-009	9	10	14099	38.2	7.7	68.2	144	4.2	11658	0.5	2973	1154	284	13	0.7	99.4	4.3	3087	820	3.58	0.13	13.47%
DD002A	DD002A-010	10	11	13180	34.7	7	61.6	126	3.8	10887	0.5	2806	1084	261	11	0.7	86.2	4.1	2168	555	3.34	0.09	13.58%
DD002A	DD002A-011	11	12	12987	32.4	6.8	64.2	128	3.8	10539	0.4	2808	1079	269	11	0.7	82.8	3.6	2273	361	3.28	0.01	13.83%
DD002A	DD002A-012	11	12	12632	35	6.3	63.9	127	3.6	10292	0.4	2752	1053	269	12	0.6	82.8	3.1	2260	369	3.20	0.01	13.88%
DD002A	DD002A-013	12	13	11120	32.8	7.2	58.6	117	3.5	8823	0.4	2585	961	249	11	0.7	88.2	3.5	1627	487	2.82	0.02	14.69%
DD002A	DD002A-014	13	14	14357	36.1	6.9	64.4	134	3.9	12667	0.4	2914	1153	265	12	0.6	87.3	3	914	622	3.64	0.04	13.03%
DD002A	DD002A-015	14	15	15094	35.4	6	60.7	127	3.6	13297	0.3	2892	1183	249	12	0.6	80.3	2.7	641	200	3.87	0.13	12.29%
DD002A	DD002A-016	15	16	12491	27.2	5	49.3	103	2.8	10919	0.3	2480	991	215	9.6	<0.5	63.6	2.3	916	338	3.20	0.05	12.64%
DD002A	DD002A-017	16	17	17183	38.1	7	66.6	141	3.8	15180	0.4	3320	1344	285	13	0.6	83.4	3.1	1448	136	4.41	0.07	12.34%
DD002A	DD002A-018	17	18	13549	37.5	7.6	59.2	128	3.9	11200	0.5	2820	1107	251	12	0.7	90.9	4	1887	351	3.43	0.11	13.37%
DD002A	DD002A-019	18	19	11729	49.2	9.8	61.9	141	5.6	9830	0.6	2452	953	244	15	0.9	125.6	5.2	904	364	3.00	0.14	13.24%
DD002A	DD002A-020	19	20	7389	49.6	13.2	41.5	96.7	6.6	6111	0.9	1646	620	162	12	1.6	166.7	7.4	1387	435	1.91	0.11	13.83%
DD002A	DD002A-022	20	21	11004	38.3	8.8	56.1	118	4.6	8817	0.6	2416	918	224	11	0.8	111.8	5	937	302	2.78	0.18	14.00%
DD002A	DD002A-023	21	22	3521	134.8	46.5	46.9	138	21.3	2364	3.9	1073	347	153	24	5.8	558.5	32	1683	515	1.00	0.19	16.64%
DD002A	DD002A-024	22	23	11161	49.8	13.7	54	118	6.8	9087	1	2367	923	220	13	1.5	170.8	8.3	2269	516	2.83	0.10	13.55%
DD002A	DD002A-025	23	24	9041	29.4	7	38.7	86.7	3.5	7584	0.5	1825	728	164	8.6	0.7	87.4	3.7	2165	500	2.30	0.11	12.98%
DD002A	DD002A-026	23	24	9407	29.9	7	41.1	87.1	3.6	7934	0.5	1891	753	167	8.6	0.6	89	3.9	1798	472	2.39	0.11	12.90%
DD002A	DD002A-027	24	25.3	8626	36.9	10.8	37.4	85.7	5	6967	1.1	1741	696	155	9.5	1.3	123.5	9	1360	393	2.17	0.08	13.12%
DD002A	DD002A-028	25.3	26	15309	38.8	8.2	62.4	130	4.4	12438	0.5	3060	1247	274	12	0.8	102.9	4.1	859	402	3.83	0.23	13.13%
DD002A	DD002A-029	26	27	10290	38.6	9.4	52.3	104	4.9	7699	0.6	2524	912	234	10	1	119.9	5.1	1211	540	2.58	0.14	15.56%
DD002A	DD002A-031	27	28.2	6044	113.5	32.9	61	159	16.8	4258	2.4	1703	570	220	22	3.7	418.2	19.1	772	106	1.60	0.11	16.58%
DD002A	DD002A-032	28.2	29	475.3	28.3	13.5	9.7	27.7	5.3	266.9	1.4	181	50.6	30.1	4.4	1.9	148.9	11.2	462	43	0.15	0.05	18.21%
DD002A	DD002A-033	29	30	529	28.4	13	10.3	29.9	5.2	297.6	1.6	201	57.6	33.1	4.6	1.9	142.4	12.6	2228	175	0.16	0.06	16.64%
DD002A	DD002A-034	30	31	1160	40.2	15.9	17.3	48.5	6.5	682.2	1.9	400	120	59.9	6.9	2.4	176.7	15.7	884	26	0.32	0.08	18.74%
DD002A	DD002A-035	31	32	11334	116.2	31.9	89.6	215	16.2	8403	2.3	2884	1020	334	26	3.8	388.8	18.4	191	96	2.92	0.38	15.63%
DD002A	DD002A-036	32	33	11741	114.1	29	93.2	219	15.5	9127	2	3101	1083	354	26	3.1	363	16.3	557	54	3.08	0.33	15.85%
DD002A	DD002A-037	33	34	8122	75.1	21.2	67.2	153	10.7	5728	1.5	2213	762	257	17	2.4	257.4	11.8	1713	362	2.07	0.17	16.74%
DD002A	DD002A-038	34	35	2673	40.2	11.7	28.7	68.4	5.9	1693	0.7	816	262	108	8.5	1.3	141.5	5.9	1657	328	0.69	0.08	18.29%
DD002A	DD002A-039	34	35	2693	40.2	11.3	30.1	68.5	6	1695	0.8	827	264	109	8.3	1.1	141.3	6.2	689	51	0.69	0.08	18.41%
DD002A	DD002A-040	35	36	600.2	14.1	4.5	8.1	20.5	2.2	415.8	0.4	212	64.3	28.4	2.7	0.6	55.9	3.1	926	46	0.17	0.03	19.19%
DD002A	DD002A-041	36	37	98.6	5.9	3.1	2.2	6.8	1.1	67.4	0.4	38.1	10.9	7	1	<0.5	30.7	3.1	1197	330	0.03	0.00	17.55%
DD002A	DD002A-042	37	38	94.3	6.2	3.4	2.3	7.6	1.2	54.1	0.4	39.7	10.4	7.8	1.1	0.6	30.6	3.1	1348	66	0.03	0.00	18.86%
DD002A	DD002A-043	38	39.4	279.9	6.9	3.4	3.3	9.3	1.3	192.6	0.4	82	26.2	11.9	1.2	<0.5	33.2	3.4	1165	47	0.08	0.01	16.42%
DD002A	DD002A-044	39.4	40.2	8423	73.6	22.5	56.9	133	11	6767	1.8	1983	719	213	16	2.5	277	14.6	1592	167	2.19	0.17	14.38%
DD002A	DD002A-045	40.2	41	13669	33.8	6.7	59.6	122	3.7	11680	0.4	2775	1104	248	11	0.6	78.5	3.3	436	70	3.49	0.16	12.98%
DD002A	DD002A-046	41	42	12047	30.9	5.6	56.1	118	3	9845	0.3	2554	985	236	10	<0.5	70.3	2.7	949	118	3.04	0.18	13.58%
DD002A	DD002A-047	42	43	10407	40.2	8.1	56.3	124	4.6	7884	0.4	2312	878	234	12	0.8	104	3.6	457	52	2.58	0.15	14.41%
DD002A	DD002A-048	43	44	12116	30.7	5.9	54.5	111	3.4	9105	0.3	2590	1018	237	10	<0.5	75	2.4	417	66	2.97	0.21	14.18%
DD002A	DD002A-049	44	45	12038	35.9	6.1	56.8	121	3.6	9399	0.3	2608	1012	241	11	<0.5	76.8	2.3	1870	191	3.00	0.30	14.09%
DD002A	DD002A-050	45	46	10284	30.5	5.3	52.8	110	3.1	7698	0.3	2374	891	234	10	<0.5	68.9	2.1	667	155	2.55	0.47	14.95%
DD002A	DD002A-051	46	46.95	11311	55.3	10.8	58.1	131	6.5	8986	0.6	2459	944	240	15	0.9	145.9	4.7	1082	178	2.85	0.28	13.92%
DD002A	DD002A-052	46	46.95	11797	47.7	9.1	58	128	5.3	9378	0.5	2541	975	243	13	0.8	120.9	4.2	1496	52	2.97	0.23	13.84%
DD002A	DD002A-053	46.95	48	5311	41.5	11.2	34.7	80	5.6	4008	0.7	1285	468	138	9.1	1.2	136.8	5.3	620	76	1.35	0.11	15.14%
DD002A	DD002A-054	48	49.3	15991	38.9	8	52.7	112	4.3	14086	0.4	2927	1241	235	11	0.7	99.7	3.3	124	33	4.08	0.14	11.93%
DD002A	DD002A-055	49.3	50	1327	28.8	9.8	15.6	39.6	4.7	788.8	0.8	410	130	56.6	5.2	1.2	123.6	6.5	13	39	0.35	0.05	18.20%
DD002A	DD002A-056	50	51	440.4	18.1	8.5	8	22.4	3.5	259.2	1	160	45.7	26.1	3.3	1.4	96.4	8.4	61	32	0.13	0.04	18.52%
DD002A	DD002A-057	51	52	531.4	15.3	7.3	8.1	21.7	2.8	305.6	1.1	189	55.7	28.8	3	1.3	79.5	8.5	68	22	0.15	0.05	19.32%
DD002A	DD002A-058	52	53	673.2	16.7	7.4	12	30.4	2.8	364.9	0.9	264	74.4	45.4	3.6	1							

For personal use only

Hole_ID	Sample No	Depth From (m)	Depth To (m)	Ce ppm	Dy ppm	Er ppm	Eu ppm	Gd ppm	Ho ppm	La ppm	Lu ppm	Nd ppm	Pr ppm	Sm ppm	Tb ppm	Tm ppm	Y ppm	Yb ppm	Nb ppm	Mo ppm	TREO%	Nb2O5%	NdPr%
DD002A	DD002A-072	64	65	546	10.9	4.8	7.3	18.8	1.8	352	0.6	167	52.9	26.5	2.3	0.7	53.1	5.2	717	217	0.15	0.06	17.51%
DD002A	DD002A-073	65	66	912.3	21.5	8.5	14.4	37.1	3.5	540.6	1	316	93	49.5	4.4	1.3	96.4	8.3	1916	73	0.25	0.10	19.27%
DD002A	DD002A-074	66	67	3048	43.2	14	40.1	92.5	6.5	1715	1.7	1121	327	154	9.9	2	160.4	14.1	4451	110	0.79	0.33	21.36%
DD002A	DD002A-075	67	68	1196	27.4	12.7	18.8	46.1	4.6	663.8	2.1	448	129	67.8	5.8	2.1	135.1	16.6	3153	100	0.33	0.16	20.66%
DD002A	DD002A-076	68	69	648.7	17.9	8.3	10.7	27.4	3	392.1	1.5	223	65.5	37.4	3.4	1.4	86.8	12.1	3145	88	0.18	0.09	18.62%
DD002A	DD002A-077	69	70	911.3	18.1	7.4	11.3	27	2.9	560.5	1	296	89.9	41.6	3.2	1.2	86.5	8	1444	174	0.24	0.10	18.56%
DD002A	DD002A-078	70	70.7	9547	37	10.1	38.5	86.7	5.2	8207	0.7	1817	742	164	9.3	1.2	126.1	5.9	1641	7	2.44	0.03	12.26%
DD002A	DD002A-079	70	70.7	9935	38.5	10.2	38	88.3	5.1	8390	0.8	1893	765	164	9.4	1.2	130.4	6.1	713	87	2.52	0.03	12.33%
DD002A	DD002A-080	70	72	12802	36.8	6.8	61.5	131	4	10461	0.4	2732	1040	260	12	0.6	90.2	3.1	784	777	3.24	0.15	13.60%
DD002A	DD002A-081	72	73	13255	42.9	7.9	63.1	138	4.5	10617	0.5	2823	1086	269	13	0.7	102	3.8	333	356	3.33	0.13	13.71%
DD002A	DD002A-082	73	74	11022	97.1	24.6	73.6	173	12.9	8501	1.5	2698	964	293	21	2.6	317.6	11.8	488	433	2.84	0.19	15.06%
DD002A	DD002A-083	74	75	9840	126.6	34.5	84.2	203	17.6	7082	2.2	2771	920	324	26	3.6	432.1	17.6	239	29	2.57	0.37	16.80%
DD002A	DD002A-084	75	76	11728	38.8	10.2	59.7	120	4.8	9392	0.8	2652	990	254	11	1.1	118.7	6.1	228	26	2.97	0.18	14.30%
DD002A	DD002A-085	76	77	11033	38.9	7.3	53.1	113	4.2	8709	0.4	2324	904	254	12	0.7	98.6	3.5	214	55	2.75	0.19	13.68%
DD002A	DD002A-086	77	78	13422	36.3	5.7	59.6	125	3.4	10587	0.3	2815	1099	262	12	<0.5	72.3	2.1	53	10	3.34	0.17	13.69%
DD002A	DD002A-087	78	79	12258	32.6	5.3	52.8	109	3.3	10234	0.3	2516	983	227	11	<0.5	65.8	2.1	93	3	3.10	0.11	13.16%
DD002A	DD002A-088	79	80	14682	33.3	5.4	55	115	3	13088	0.3	2898	1172	244	11	<0.5	63.8	2.1	232	112	3.79	0.01	12.53%
DD002A	DD002A-089	80	80.9	12791	29.2	4.7	53.8	108	2.8	10736	0.2	2615	1025	233	10	<0.5	56.4	1.8	238	295	3.24	0.06	13.12%
DD002A	DD002A-090	80.9	82	12873	30	5.2	48.8	100	3.1	10426	0.3	2536	1020	222	9.3	<0.5	67.1	2.8	255	19	3.20	0.08	12.96%
DD002A	DD002A-091	82	83	7622	29.3	7.3	41.6	85.2	3.7	5228	0.7	1832	679	185	8.1	0.9	89.2	5.6	1002	16	1.85	0.18	15.83%
DD002A	DD002A-092	82	83	8212	31.2	8.4	43.2	91.2	3.7	5622	0.7	1982	737	192	8.6	1.1	95	5.7	1076	173	2.00	0.19	15.91%
DD002A	DD002A-093	83	84	8466	34.8	8.6	47.8	101	4.3	5862	0.7	2035	746	210	9.2	1	101.7	5.9	97	23	2.07	0.18	15.72%
DD002A	DD002A-094	84	85	7797	37.8	9.8	48.1	103	4.9	5421	0.7	1916	700	205	10	1.1	118	5.7	885	618	1.92	0.26	15.92%
DD002A	DD002A-095	85	86	8848	41.4	9.5	50.5	110	4.9	5963	0.6	2095	787	211	11	0.9	120.6	4.6	180	45	2.14	0.21	15.73%
DD002A	DD002A-096	86	87	7270	44.9	10.1	50.2	112	5.5	4765	0.7	1873	665	214	11	1.1	131.9	5.8	239	50	1.78	0.29	16.68%
DD002A	DD002A-097	87	88	7587	36.7	9.4	44.7	93.9	4.7	5355	0.6	1841	676	195	9.6	1	116	5.2	590	62	1.87	0.20	15.71%
DD002A	DD002A-098	88	88.8	8609	36.1	7.6	51	109	4	6611	0.5	2015	734	217	10	0.8	98.3	3.8	1034	151	2.17	0.11	14.81%
DD002A	DD002A-099	88.8	90	14025	34	7.2	58	120	3.7	11947	0.5	2900	1123	256	11	0.6	85.9	3.7	861	12	3.58	0.06	13.11%
DD002A	DD002A-100	90	91	6124	97.3	30	48.6	128	14.4	4695	2.2	1480	531	172	18	3.4	365.6	18.2	139	62	1.61	0.14	14.58%
DD002A	DD002A-102	91	92	4844	68.6	20.6	41.6	106	10.3	3673	1.4	1220	426	155	14	2.5	258.9	11.6	1359	210	1.27	0.24	15.10%
DD002A	DD002A-103	92	93	3404	47.1	17.4	22.5	59.5	7.7	2603	1.2	814	294	84.5	8.3	2	199	9.6	318	247	0.89	0.14	14.56%
DD002A	DD002A-104	93	94	13043	49.2	9.7	61.5	133	5.8	11108	0.5	2723	1053	260	14	1	124.4	4.4	642	55	3.35	0.33	13.16%
DD002A	DD002A-105	94	95	15803	30.1	5.6	60.8	122	3	14037	0.3	3103	1235	268	11	0.6	70.9	2.5	501	32	4.07	0.10	12.44%
DD002A	DD002A-106	94	95	15839	28.5	5.6	60.9	121	3	13940	0.3	3125	1248	274	10	0.5	71.2	2.5	1053	142	4.07	0.10	12.55%
DD002A	DD002A-107	95	96	11768	28.4	7.3	56.8	110	3.4	9644	0.5	2661	982	255	9.2	0.8	82.6	3.8	884	582	3.00	0.09	14.18%
DD002A	DD002A-108	96	97	10346	26.6	6.4	46.7	93.3	3.1	8382	0.4	2229	845	206	8.2	0.6	76.6	3.4	292	289	2.61	0.20	13.75%
DD002A	DD002A-109	97	98	4613	46	18.4	35.4	82.5	7.4	3574	1.7	1206	409	138	9	2.2	199.3	13.8	284	998	1.21	0.12	15.52%
DD002A	DD002A-111	98	99	4753	79.7	25.9	51.7	130	12.6	3305	1.9	1475	465	187	16	3.2	311	15.3	396	88	1.27	0.10	17.82%
DD002A	DD002A-112	99	100	6767	34.7	10	44.2	93.1	4.7	5210	0.7	1754	609	187	8.7	1.1	117.8	5.5	314	185	1.74	0.12	15.86%
DD002A	DD002A-113	100	101	6933	63.2	16.7	63.4	144	8.4	4417	1.2	2153	687	252	15	2	198.6	9.3	233	36	1.75	0.32	18.91%
DD002A	DD002A-114	101	102	4963	58.6	15.5	49.5	118	8.1	3160	1.1	1522	493	188	14	1.7	194.5	9.1	572	193	1.27	0.17	18.60%
DD002A	DD002A-115	102	102.75	1494	26	9.6	18	44.7	4.2	875.4	0.7	472	148	66.1	5.5	1.1	109.1	5.8	587	220	0.38	0.07	18.80%
DD002A	DD002A-116	102.75	103.5	2763	56.4	17.8	34.3	87.5	8.5	1788	1.2	891	274	123	12	2.1	220.4	10.1	393	119	0.74	0.14	18.42%
DD002A	DD002A-117	103.5	104.72	6941	84.7	24	67.5	162	11.8	4607	1.5	2134	687	263	18	2.5	292	11.8	2023	20	1.79	0.32	18.35%
DD002A	DD002A-118	104.72	106	8673	55.2	14.2	67.2	144	7.4	6196	1	2353	805	273	14	1.6	182.9	8	1553	39	2.20	0.28	16.74%
DD002A	DD002A-119	104.72	106	8570	51.7	14.4	66.6	142	7.4	6080	1	2359	793	271	14	1.5	178	8.2	549	136	2.17	0.25	16.93%
DD002A	DD002A-120	106	107	7808	60.3	17.1	58.8	131	8.7	5524	1.2	2168	725	243	14	1.8	209.2	9.4	557	175	1.99	0.19	16.97%
DD002A	DD002A-121	107	108	9423	30.7	6.5	55.9	115	3.4	6709	0.4	2322	827	238	9.9	0.7	76.8	3	736	220	2.32	0.21	15.84%
DD002A	DD002A-122	108	109	6400	55.5	16.2	51.1	118	8.1	4015	1.1	1804	615	206	13	1.9	196.3	8.7	684	46	1.58	0.45	17.84%
DD002A	DD002A-123	109	110.16	3979	78.1	24.6	49.1	129	11.3	2588	2	1225	392	171	16	3	296.3	16.1	836	41	1.05	0.16	17.92%
DD002A	DD002A-124	110.16	111	1190	23.7	6.4	16.4	43	3.2	737.6	0.5	359	115	54.5	5.3	0.7	81.4	3.7	629	43	0.31	0.26	17.87%
DD002A	DD002A-125	111	112	2645	43.8	12.5	29.8	74.5	6.2	1670	0.8	757	252	106	9.5	1.3	153.6	6.6	678	74	0.68	0.46	17.41%
DD002A	DD002A-126	112	113	2680	43.8	19.2	29.4	70.2	7.2	1650	2	851	268	117	8	2.6	198.3	16.4	720	81	0.70	0.27	18.67%
DD002A	DD002A-127	113	114	8636	46.1	13.8	55.9	117	6.6	5607	1	2299	800	240	12	1.5	161	8.3	2518	14	2.11	0.25	17.15%
DD002A	DD002A-128	114	115	7626	28.4	7.4	52	101	3.7	4708	0.7	2274	758	242	8.5	0.9	80.8	5.5	1157	21	1.86	0.23	19.02%
DD002A	DD002A-129	115	116	4815	73.3	21.2	59.4	141	10.1	2772	1.5	1706	507	225	16	2.3	252.9	12.4	513	3	1.24	0.12	20.76%
DD002A																							

For personal use only

Hole_ID	Sample No	Depth From (m)	Depth To (m)	Ce ppm	Dy ppm	Er ppm	Eu ppm	Gd ppm	Ho ppm	La ppm	Lu ppm	Nd ppm	Pr ppm	Sm ppm	Tb ppm	Tm ppm	Y ppm	Yb ppm	Nb ppm	Mo ppm	TREO%	Nb2O5%	NdPr%
DD002A	DD002A-155	138	139	3224	51.4	17	42.9	98.8	7.9	1753	1.3	1273	361	167	11	2	193.5	10.7	6580	50	0.85	0.08	22.55%
DD002A	DD002A-156	140	141	711.3	9.7	3.8	7	16.9	1.5	501.7	0.4	201	66.5	26.8	2	0.5	41.5	3.3	4877	74	0.19	0.08	16.71%
DD002A	DD002A-157	140	141	532.6	8.9	3.9	6.1	14.7	1.6	333.6	0.5	169	53.4	22.7	1.7	0.6	39.2	3.7	156	13	0.14	0.08	18.58%
DD002A	DD002A-158	141	142	559.1	7.2	2.8	5.2	12.6	1.1	394.4	0.3	166	53.4	21.1	1.4	<0.5	28	2.6	291	16	0.15	0.09	17.39%
DD002A	DD002A-159	141	142	558.6	6.1	2.7	5.3	13.3	1	379.6	0.3	163	53.2	20.9	1.3	<0.5	27.6	2.5	97	6	0.14	0.09	17.45%
DD002A	DD002A-160	142	143	782.5	10.3	3.7	8.7	20.5	1.7	536.1	0.4	239	76.5	32.4	2.1	0.5	40.8	3.5	95	6	0.21	0.10	17.88%
DD002A	DD002A-161	143	144	440	8.3	2.9	5.7	13.3	1.3	268.2	0.3	143	43.7	19.2	1.6	<0.5	32.6	2.8	285	44	0.12	0.11	18.92%
DD002A	DD002A-162	144	145	413	7.5	2.9	4.2	12.2	1.1	261.9	0.3	123	40.5	16.4	1.3	<0.5	29.7	2.5	110	69	0.11	0.09	17.78%
DD002A	DD002A-163	145	146	904.9	8.3	2.8	6.9	17.5	1.2	696.8	0.3	229	79.3	25.9	1.9	<0.5	30.9	2	184	9	0.24	0.12	15.29%
DD002A	DD002A-164	146	147	354.5	6.3	2.8	4.1	11	1	209.4	0.3	115	36.4	14.8	1.4	<0.5	30.7	2.5	93	6	0.09	0.12	19.08%
DD002A	DD002A-164	147	148	393.8	8.1	4	4.5	10.4	1.5	250.9	0.3	123	38	16.6	1.3	0.6	39	2.7	148	15	0.10	0.11	17.84%
DD002A	DD002A-166	148	149	701.1	8.1	3.1	6.2	14.1	1.4	502.6	0.3	185	60.6	23.2	1.7	<0.5	34.9	2.4	122	8	0.18	0.15	15.85%
DD002A	DD002A-167	149	150	2752	12.2	3.6	14	29.9	1.8	2290	0.3	559	210	58.9	2.9	<0.5	42.5	2.6	77	29	0.70	0.27	12.81%
DD002A	DD002A-168	150	151	2122	59.9	24.6	33.8	86.9	10.6	1071	1.7	805	226	119	11	2.7	270.2	14.4	200	54	0.57	0.53	21.09%
DD002A	DD002A-169	151	152.4	1128	51.6	28.6	21	60	11.2	599.5	2.4	433	120	71.4	8.5	3.7	293.7	20.6	175	26	0.34	0.05	19.20%
DD002A	DD002A-170	152.4	154	1885	33.6	12.4	23.8	57.9	5.6	1027	0.9	661	190	91.7	7	1.5	144.3	7.7	190	48	0.49	0.20	20.41%
DD002A	DD002A-171	154	155	3750	65.3	20.9	46.7	112	10.4	2116	1.7	1289	383	178	13	2.5	249.4	14.6	134	13	0.97	0.18	20.16%
DD002A	DD002A-172	154	155	3260	56	18	40.6	99.4	8.5	1806	1.4	1132	334	151	12	2.1	212.3	12.1	274	36	0.84	0.20	20.43%
DD002A	DD002A-173	155	156	11986	35.8	6.4	78.2	155	3.7	7608	0.4	3120	1078	335	12	0.6	81.8	3.8	192	5	2.87	0.07	17.08%
DD002A	DD002A-174	156	157	13153	35.7	4.9	78.1	159	3.3	8978	0.3	3052	1113	322	13	<0.5	66.3	2.5	56	13	3.16	0.08	15.39%
DD002A	DD002A-175	157	158.05	14474	31.3	5.5	73.7	147	3	10406	0.3	3162	1189	317	12	<0.5	65	2.5	50	4	3.50	0.13	14.51%
DD002A	DD002A-176	158.05	159.15	1279	9.5	3.8	11.8	25.2	1.5	749	0.3	361	116	44.6	2.4	<0.5	36	2.4	288	32	0.31	0.01	17.98%
DD002A	DD002A-177	159.15	160	6692	24.4	4.9	55	113	2.8	4110	0.4	1927	634	239	8.7	0.5	63.3	3.1	238	32	1.62	0.03	18.40%
DD002A	DD002A-178	160	161	4522	15.2	3.8	39.3	72.8	1.7	2667	0.3	1393	438	167	5.1	<0.5	42.9	2.4	133	18	1.10	0.03	19.48%
DD002A	DD002A-179	161	162	9098	28.4	5.8	63	123	3.1	6099	0.4	2362	815	272	9.6	0.6	74.3	3.5	231	20	2.22	0.04	16.71%
DD002A	DD002A-180	162	163	9485	60.6	13.4	66.3	153	7.5	7383	0.8	2277	798	263	16	1.5	177.6	7.1	187	18	2.43	0.71	14.80%
DD002A	DD002A-182	163	164	7221	40.3	11	50.9	109	5.4	5355	0.8	1804	616	208	11	1.1	127.9	6.6	600	25	1.82	0.80	15.49%
DD002A	DD002A-183	164	165	2891	35.6	9.3	34.6	79.4	4.8	1766	0.5	921	277	128	8.7	1	114.9	4.2	248	21	0.74	0.72	19.03%
DD002A	DD002A-184	165	166	9929	46.3	11.3	57.4	124	6	7038	0.7	2397	844	245	12	1.1	140.3	5.7	362	71	2.44	0.76	15.49%
DD002A	DD002A-185	166	167	10600	43.6	12.3	60	121	6.4	7809	0.8	2544	899	260	12	1.3	147.5	6.8	555	163	2.64	0.35	15.24%
DD002A	DD002A-186	166	167	10637	46	12.6	62.8	127	6.3	7626	0.9	2644	917	262	12	1.3	149.2	7.4	1045	87	2.64	0.36	15.76%
DD002A	DD002A-187	167	168	10753	40.5	12	51.7	108	5.8	8142	0.8	2429	885	230	11	1.3	138.7	7.2	1062	10	2.67	0.31	14.48%
DD002A	DD002A-188	168	169	13224	41.5	11.1	55.7	115	5.3	10868	0.7	2587	1010	235	11	1.1	124.8	6.3	1078	2	3.31	0.35	12.67%
DD002A	DD002A-189	169	170	3817	25.9	8.7	30.3	65.8	3.9	2611	0.7	1036	343	123	6.4	1	95	5.9	863	3	0.96	0.22	16.81%
DD002A	DD002A-191	170	171	5269	36.3	10.4	54.7	113	5	3326	0.8	1591	503	215	9.9	1.3	119.2	7.2	3579	40	1.32	0.27	18.53%
DD002A	DD002A-192	171	172	6265	40.9	9.6	72.3	147	4.9	2969	0.7	2431	710	312	13	1	111.3	6	3605	43	1.53	0.03	23.92%
DD002A	DD002A-193	172	173	8074	51.1	11.6	77.4	162	6.2	5100	0.7	2523	785	321	14	1.2	139.7	6.3	1684	<1	2.02	0.13	19.09%
DD002A	DD002A-194	173	174	2776	36.9	11	27.9	68.3	5.6	1776	0.7	835	261	109	7.6	1.1	135.4	6.3	2190	1	0.71	0.11	18.01%
DD002A	DD002A-195	174	175	1411	42	13.5	16.3	47.6	7	888.5	0.8	411	129	58.8	6.8	1.5	176.2	7.2	1313	<1	0.38	0.13	16.69%
DD002A	DD002A-196	175	176	989.7	33.6	13.6	14.5	37.2	6.2	552.9	0.8	325	97.8	47.7	5.8	1.5	163.7	7.1	265	2	0.27	0.08	18.25%
DD002A	DD002A-197	176	177.25	2216	19.8	6.6	16.2	36.2	3.2	1506	0.4	567	192	65.9	4.3	0.6	83.6	3.7	543	2	0.55	0.10	16.02%
DD002A	DD002A-198	177.25	178	8219	32.1	9.1	35.5	76.2	4.4	6817	0.6	1654	639	152	7.9	0.9	108.2	5.1	337	5	2.08	0.14	12.86%
DD002A	DD002A-199	177.25	178	8895	34.4	9.9	38.4	82	4.9	7304	0.6	1793	687	165	8.4	1	115.8	5.5	370	5	2.24	0.14	12.90%
DD002A	DD002A-200	178	179	4534	28.3	8.3	22.6	52	4	3772	0.6	933	353	93	6.3	0.9	96.9	5.2	620	7	1.16	0.06	12.93%
DD002A	DD002A-201	179	180	13461	85.6	21.7	74.2	170	11.5	11016	1.3	2914	1087	302	20	2.2	278.9	11.5	881	6	3.45	0.08	13.53%
DD002A	DD002A-202	180	181	2531	28.9	8.5	22.2	50.9	4.4	1688	0.5	688	226	87.4	5.9	0.9	108.4	4.4	135	5	0.64	0.18	16.68%
DD002A	DD002A-203	181	182	5811	90.6	28.2	68.5	156	14.2	3461	1.7	1934	586	266	19	3	353	14.8	444	5	1.50	0.04	19.59%
DD002A	DD002A-204	182	183	10281	65.6	19.8	60.9	135	9.9	8053	1.2	2378	853	249	15	2.1	241.7	10.3	489	4	2.62	0.17	14.39%
DD002A	DD002A-205	183	184	6416	60.7	20.2	44.3	103	9.4	4736	1.3	1560	549	170	13	2.1	242.2	11.6	678	4	1.63	0.79	15.07%
DD002A	DD002A-206	184	185	7005	66.6	20.3	58	129	10.2	4754	1.3	1931	639	228	15	2.4	252.1	11.1	384	5	1.77	0.38	16.93%
DD002A	DD002A-207	185	186	6426	55	16.7	60.8	127	8.2	3989	1.1	2015	631	251	13	1.7	198.7	9.5	186	1	1.62	0.17	19.10%
DD002A	DD002A-208	186	187	5210	62.2	18.8	53.7	117	9.3	3209	1.3	1703	520	215	14	2.1	230	10.8	397	2	1.33	0.38	19.46%
DD002A	DD002A-209	187	187.6	4722	58.8	15.7	59	125	7.8	2397	1	1761	515	235	14	1.6	192	8.9	131	2	1.19	0.13	22.42%
DD002A	DD002A-210	187.6	188.38	8868	15.2	3	64.8	115	1.4	4317	0.2	2729	908	298	7.3	<0.5	32	1.7	141	3	2.03	0.02	20.90%
DD002A	DD002A-211	188.38	189.2	3041	8.8	2.3	27.7	50.7	1.2	1408	0.2	1040	324	125	3.5	<0.5	24.5	1.5	297	7	0.71	0.02	22.46%
DD002A	DD002A-212	188.38	189.2	3667	8.7	2.2	21.7	57.1	1	1712	0.2	1217	387	144	3.8	<0.5	23.1	1.7	617	2	0.85		

For personal use only

Hole_ID	Sample No	Depth From (m)	Depth To (m)	Ce ppm	Dy ppm	Er ppm	Eu ppm	Gd ppm	Ho ppm	La ppm	Lu ppm	Nd ppm	Pr ppm	Sm ppm	Tb ppm	Tm ppm	Y ppm	Yb ppm	Nb ppm	Mo ppm	TREO%	Nb2O5%	NdPr%
DD002A	DD002A-238	212	212.8	922.5	14.3	4.2	12	30.3	2.1	561.2	0.3	334	98.2	46	3.2	0.5	49.6	2.4	166	1	0.24	0.04	20.68%
DD002A	DD002A-239	212	212.8	983.7	14.5	4.3	12.9	29.8	2.2	572.5	0.3	339	101	46.4	3.3	<0.5	50.5	2.5	283	24	0.25	0.04	20.24%
DD002A	DD002A-240	212.8	213.7	648.4	12	5.1	7.5	19.4	2.3	393.1	0.6	208	64.4	29.4	2.5	0.7	54.5	5.3	251	30	0.17	0.06	18.66%
DD002A	DD002A-241	213.7	215	320.4	14.4	7.1	5.3	17.4	2.7	189.6	0.8	108	32.8	16.8	2.6	1	72.9	6.8	258	18	0.09	0.04	17.43%
DD002A	DD002A-242	215	216	958.6	16.1	5.4	12.4	30.2	2.6	565.5	0.4	321	97.8	46.3	3.5	0.7	62.1	3.6	427	76	0.25	0.06	19.61%
DD002A	DD002A-243	216	217	1629	25.2	8	20.6	49	3.8	932.6	0.6	547	163	79.8	5.6	0.9	88.7	5.6	263	29	0.42	0.08	19.86%
DD002A	DD002A-244	217	218	1197	24.9	8.9	13.9	37	4.4	735	0.7	367	115	50.6	4.9	1.1	108.9	5.9	379	19	0.31	0.06	17.91%
DD002A	DD002A-245	218	219	2603	32.2	10.4	25.4	60.3	4.9	1728	0.8	783	247	105	6.8	1.2	120.4	6.5	295	9	0.67	0.09	17.88%
DD002A	DD002A-246	219	220	530.3	15.6	6.9	8.2	20.9	2.9	304.7	0.6	187	54.8	30	3.1	0.9	73.8	5.4	280	13	0.15	0.04	19.28%
DD002A	DD002A-247	220	221	852.7	15.7	5.8	11.2	27.6	2.5	504.4	0.4	279	86.1	41.3	3.3	0.7	60.9	3.4	211	8	0.22	0.06	19.19%
DD002A	DD002A-248	221	222.3	155.3	11.2	5.5	3.2	11.7	2.3	98.3	0.5	47.6	14.6	9.7	2	0.8	58.1	4.5	189	11	0.05	0.01	14.44%
DD002A	DD002A-249	222.3	223	756.8	12.6	4.7	7.9	21	2.1	444.1	0.5	242	75.1	33.4	2.6	0.6	51.1	3.9	289	23	0.19	0.07	19.02%
DD002A	DD002A-250	223	224	595.7	5.4	2.3	5.2	12	0.9	344.9	0.2	196	60.8	25.9	1.2	<0.5	22.2	1.9	464	26	0.15	0.06	20.10%
DD002A	DD002A-251	224	225	693.5	16	5.4	9.4	26.1	2.6	402.8	0.4	231	73.2	35.9	3.4	0.7	61.6	3.1	381	11	0.18	0.03	19.34%
DD002A	DD002A-252	224	225	619.1	14.6	4.9	8.3	23	2.3	355.2	0.4	211	64	30.3	3.1	0.6	56.6	3.1	166	38	0.16	0.03	19.59%
DD002A	DD002A-253	225	226	1104	14.5	4.7	11.9	29.3	2	714.1	0.3	353	111	47.9	3.2	0.5	50.5	2.8	630	41	0.29	0.04	18.84%
DD002A	DD002A-254	226	226.75	935.3	14.1	4.7	10.8	28	2.3	566.6	0.3	311	94.3	41.8	3	0.6	55.1	3	426	46	0.24	0.11	19.47%
DD002A	DD002A-255	226.75	227.75	2043	24.3	9	19	44.8	4	1320	0.8	558	189	69	5.2	1.2	97.3	6.5	234	24	0.51	0.07	16.95%
DD002A	DD002A-256	227.75	229	819.2	18	8.8	10	26.6	3.6	503.8	0.7	259	80.7	36.9	3.4	1	90.1	5.7	1535	60	0.22	0.03	18.09%
DD002A	DD002A-257	229	230.05	977.8	17.7	7.5	11.6	29.3	3.2	612.5	0.5	316	96.8	46	3.5	0.8	80.6	4.1	478	6	0.26	0.07	18.61%
DD002A	DD002A-258	230.05	231	1290	15.7	5.7	13.2	31.7	2.6	799.1	0.5	388	120	51.9	3.6	0.8	65.6	4.6	137	4	0.33	0.07	18.12%
DD002A	DD002A-259	231	231.8	1097	23	8.6	14.1	36	3.8	650.7	0.7	359	109	51.9	4.3	1.1	97.1	6.3	123	1	0.29	0.07	18.93%
DD002A	DD002A-260	231.8	233	1210	19.4	8.1	16.8	38.6	3.3	635.6	0.8	442	127	65.4	4.2	1.2	88.3	6.9	92	3	0.31	0.06	21.23%
DD002A	DD002A-262	233	234	848.6	20	9.3	9.7	27.8	3.4	518.3	1.1	266	83.3	37.4	3.6	1.4	95.2	9.3	148	7	0.23	0.04	17.96%
DD002A	DD002A-263	234	235	259.9	14.6	7.8	4.5	14.3	2.8	170.1	1.1	80.8	25.3	15	2.3	1.3	78.5	9.3	129	5	0.08	0.02	15.27%
DD002A	DD002A-264	235	236	1733	32.3	14.5	21.2	49.9	6	1086	1.3	598	173	88.3	6.1	1.8	154.4	10.8	57	4	0.47	0.17	19.28%
DD002A	DD002A-265	236	237	166.2	16	8.2	3.3	13.6	3.1	105.1	0.9	52.1	16.1	10.9	2.4	1.2	83.7	7.6	134	11	0.06	0.02	13.70%
DD002A	DD002A-266	236	237	173.3	16.8	8.1	3.8	14.6	3.3	110.7	0.9	52.9	16.5	11.3	2.6	1.3	89.3	7.9	254	21	0.06	0.02	13.32%
DD002A	DD002A-267	237	238	1042	26.6	11	14.2	38.3	4.6	648.8	0.9	341	103	52	4.9	1.3	119.7	8	296	8	0.28	0.05	18.23%
DD002A	DD002A-268	238	239	1123	28.2	12	13.9	37.4	5.4	682.5	1.1	362	112	52.8	5.1	1.6	138.4	9.1	433	6	0.30	0.07	18.19%
DD002A	DD002A-269	239	240	1868	22.5	9.6	20.8	44.7	4.1	990.2	1.1	676	197	93.2	4.5	1.4	106.4	9.1	1416	62	0.47	0.18	21.47%
DD002A	DD002A-271	240	241	3914	60.6	19.1	58.2	134	9.2	1968	1.2	1559	444	225	15	2	219.3	10	187	36	1.01	0.40	23.09%
DD002A	DD002A-272	241	242	2102	48.9	16.8	33.2	82.5	7.9	1057	1.1	808	233	120	9.7	1.8	198.3	9.7	457	51	0.56	0.23	21.89%
DD002A	DD002A-273	242	243	376.2	27.4	13	10.1	29.9	5.2	218.9	1	143	39.6	29.4	4.7	1.6	132.6	8.8	109	7	0.12	0.06	17.29%
DD002A	DD002A-274	243	244	1405	53.3	18.6	21.9	66.1	8.8	808.2	1.1	475	141	72.6	9.8	2	216.4	9.7	103	14	0.39	0.09	18.46%
DD002A	DD002A-275	244	245	1506	57.8	18	28.2	80	9.3	855.3	1	516	152	87.1	11	1.9	213.8	8.9	323	7	0.42	0.09	18.71%
DD002A	DD002A-276	245	246	3682	63.3	21	50.1	120	10.3	1931	1.2	1422	407	199	14	2.2	247	10.5	624	5	0.96	0.17	22.26%
DD002A	DD002A-277	246	247	1484	28.8	8.5	19.7	46.6	4.4	798.1	0.5	522	156	74.9	5.9	0.9	108.1	4.4	120	14	0.38	0.15	20.67%
DD002A	DD002A-278	247	248	978.3	17.7	5.1	10.5	26.1	2.8	535.1	0.2	314	99.4	39.1	3.4	0.5	66.6	2.1	157	11	0.25	0.10	19.59%
DD002A	DD002A-279	247	248	934.9	16.7	5	10.3	26.2	2.7	510.1	0.3	302	95.2	39.6	3.4	<0.5	63.4	2.5	133	37	0.24	0.10	19.65%
DD002A	DD002A-280	248	249.3	1111	18.7	5.1	13.9	32.4	2.7	590.1	0.3	364	112	54.1	3.9	0.6	65.5	2.7	246	8	0.28	0.17	19.93%
DD002A	DD002A-281	249.3	250.35	162.4	6	2.4	3.2	8.3	1	88.1	0.2	65.7	17.9	11.4	1.2	<0.5	25.2	2	73	10	0.05	0.02	21.02%
DD002A	DD002A-282	250.35	251	1733	48.1	14.5	28.3	73.1	7.2	944.4	0.9	619	181	99.1	9.2	1.6	175.1	8	95	12	0.46	0.18	20.19%
DD002A	DD002A-283	251	252	1924	65.3	23.5	31.5	87.2	11.3	1023	1.4	692	202	107	12	2.7	266.9	12.1	252	16	0.52	0.19	19.90%
DD002A	DD002A-284	252	253	2296	47.9	14.1	30.2	76	7	1238	0.8	778	236	109	9.4	1.5	168.1	7.2	147	43	0.59	0.26	20.09%
DD002A	DD002A-285	253	254	2690	33.6	8.9	26.1	60.4	4.9	1476	0.5	859	270	102	7.2	0.8	113.2	4.5	77	54	0.66	0.52	19.87%
DD002A	DD002A-286	254	255	1507	39.1	11.5	25.2	67.4	5.8	751.3	0.8	541	159	87.8	8.3	1.2	132.8	7.2	110	30	0.39	0.51	20.81%
DD002A	DD002A-287	255	256	3282	60.1	18.6	45	107	9.2	1767	1.1	1127	345	161	13	1.9	216.9	9.5	221	53	0.84	0.35	20.45%
DD002A	DD002A-288	256	257	3227	26	7.7	28.2	61.2	3.8	1713	0.4	1001	326	116	6.4	0.8	90.1	3.7	100	17	0.77	0.18	20.00%
DD002A	DD002A-289	257	258	2654	24.8	6.6	25.3	56.5	3.8	1509	0.4	837	267	103	6	0.8	84.4	3.7	248	5	0.65	0.66	19.70%
DD002A	DD002A-290	258	259	1779	58.9	22.9	27	77.8	10.5	965.8	1.3	603	180	90.9	11	2.7	244.2	11.5	127	7	0.48	1.46	19.04%
DD002A	DD002A-291	259	260	1121	21.5	7.2	12.4	31.7	3.5	597.2	0.5	357	114	47.9	3.9	0.8	83.5	4.3	183	15	0.28	1.48	19.47%
DD002A	DD002A-292	259	260	1207	20.4	7.1	12.8	31	3.5	643.9	0.5	384	120	49.9	3.9	0.9	84.8	4.3	213	104	0.30	1.32	19.47%
DD002A	DD002A-293	260	261	1328	19.3	6.1	15.6	35.1	3.1	686.2	0.5	464	137	62	4.3	0.9	75.2	4.4	250	10	0.33	0.74	21.06%
DD002A	DD002A-294	261	262	2197	24.2	8.3	22.8	51.9	3.7	1170	0.6	720	223	92.8	5.4	1	94.9	5	243	29	0.54	0.34	20.34%
DD002A	DD002A-295	262	263	2135	30.4	8.5	26.1	64.3	4.6	1096	0.6	771	226	108	7.2	1	104.5	5.3	246				

For personal use only

Hole_ID	Sample No	Depth From (m)	Depth To (m)	Ce ppm	Dy ppm	Er ppm	Eu ppm	Gd ppm	Ho ppm	La ppm	Lu ppm	Nd ppm	Pr ppm	Sm ppm	Tb ppm	Tm ppm	Y ppm	Yb ppm	Nb ppm	Mo ppm	TREO%	Nb2O5%	NdPr%
DD002A	DD002A-321	285	286	556.4	15.1	6.1	7.1	20.3	2.6	321.5	0.5	186	56.3	27.9	2.8	0.8	66.2	4.6	1963	1	0.15	0.09	18.92%
DD002A	DD002A-322	286	287	1296	23.8	8	14.5	38.3	0.7	819.4	0.7	369	117	50.5	4.8	1	92.4	5.7	5003	4	0.33	0.14	16.99%
DD002A	DD002A-323	287	288	3189	21.4	5.5	27.1	59.4	2.9	1779	0.5	934	310	113	5.1	0.7	68.5	4	1284	2	0.76	0.10	19.01%
DD002A	DD002A-324	288	289	5735	55.7	16.9	48.4	111	8.2	3127	1.6	1690	568	194	12	2.1	196.7	13.7	1108	1	1.38	0.05	19.09%
DD002A	DD002A-325	289	290	7666	49	14.4	54.6	119	6.8	3885	1.1	2260	778	243	12	1.8	166	9.6	970	1	1.79	0.06	19.84%
DD002A	DD002A-326	290	291	4651	25.8	7.7	35.9	76.3	3.7	3059	0.6	1351	443	160	7.2	1	91.2	5.4	159	1	1.16	0.10	18.03%
DD002A	DD002A-327	291	292	1569	34.4	12.3	23.2	58.1	5.3	839.4	1.3	547	160	82.6	6.9	1.6	142.1	10.8	229	1	0.41	0.11	20.12%
DD002A	DD002A-328	292	293	3015	36.2	10.4	37.8	86.3	5.2	1516	0.8	1071	317	150	8.6	1.3	121.9	7.1	1076	<1	0.75	0.11	21.67%
DD002A	DD002A-329	293	294.25	2192	55.7	19	34.9	88.9	8.9	1145	1.4	801	229	126	11	2.2	217	12.4	1080	<1	0.58	0.55	20.72%
DD002A	DD002A-330	294.25	295	611.3	34	13.8	14.3	41.7	5.7	335.6	1.2	243	66.7	43.3	5.8	1.8	146.9	10.1	959	<1	0.19	0.05	19.47%
DD002A	DD002A-331	295	296	701.8	22.7	9	11.8	32.4	3.9	370.7	1.1	303	83.8	44.2	4	1.5	107.7	9.2	1664	1	0.20	0.09	22.50%
DD002A	DD002A-332	295	296	647.3	20.4	8.3	11.1	29.8	3.7	345.7	0.9	275	76.8	41.4	3.8	1.3	98.5	7.4	926	1	0.18	0.08	22.24%
DD002A	DD002A-333	296	297	825.1	16.7	6	10.8	27.2	2.9	466.3	0.8	317	92.4	45	3.4	1.1	78.2	6.9	5506	4	0.22	0.08	21.43%
DD002A	DD002A-334	297	298	564.5	31.2	12.5	12.1	36.1	5.5	292.9	1.2	252	67.9	39.6	5.2	1.9	147.5	10.4	5813	4	0.17	0.07	21.40%
DD002A	DD002A-335	298	298.68	577.5	78.1	33.5	23.7	80.2	14.4	290	3.4	290	72.2	63.7	13	5.1	389.4	28.6	2545	2	0.23	0.06	18.14%
DD002A	DD002A-336	298.68	300	2868	40.5	13	29.1	72.2	6.5	1467	1.3	902	289	114	8.4	1.9	162.7	10.8	1095	<1	0.70	0.03	19.81%
DD002A	DD002A-337	300	301	3502	69.7	24.8	44.3	111	11.7	2077	2.7	1184	358	167	14	3.7	294.2	22.9	569	2	0.93	0.20	19.45%
DD002A	DD002A-338	301	302	5525	72	23.3	60	139	11.2	3600	2.1	1718	540	229	16	3	290.1	17.7	205	1	1.44	0.32	18.35%
DD002A	DD002A-339	302	303	4968	68.5	21.8	53.4	127	10.9	3838	1.9	1445	451	202	14	3	285.1	16.2	785	<1	1.35	0.20	16.41%
DD002A	DD002A-340	303	304	3036	42.5	13.3	38.2	89.9	7	1849	1	1041	306	147	9.7	1.6	170.2	8.9	1224	<1	0.79	0.31	19.83%
DD002A	DD002A-342	304	305	1022	28.5	8	19.3	50	4.4	548.7	0.6	412	118	68.6	6.3	0.9	111.6	5.3	1389	2	0.28	0.37	21.94%
DD002A	DD002A-343	305	306	1835	46.1	13.7	33.8	84	7.1	873.9	1.1	740	207	121	9.9	1.8	178.1	13.3	742	2	0.49	0.31	22.63%
DD002A	DD002A-344	306	307	2697	69.1	21.9	46.4	113	11.4	1315	1.7	1031	299	144	14	2.9	291	14.7	740	<1	0.72	0.28	21.70%
DD002A	DD002A-345	307	308	3821	94.8	32.1	61.2	143	15.8	2038	2.8	1477	420	225	18	4.5	415.5	23.7	226	5	1.03	0.70	21.44%
DD002A	DD002A-346	307	308	3733	91.9	32.3	60.1	146	15.7	1976	2.9	1455	408	218	18	4.5	415	24.9	180	6	1.01	0.66	21.53%
DD002A	DD002A-347	308	309	3597	74.7	25.8	53	126	11.4	1863	2.2	1379	391	192	15	3.3	306.5	18.7	951	3	0.95	0.66	21.86%
DD002A	DD002A-348	309	310	5798	50.5	13.7	66.8	140	7.3	3090	1.2	2105	622	288	13	1.7	173.2	10	194	6	1.45	0.27	21.95%
DD002A	DD002A-349	310	311	2914	51	15.3	42.4	99.3	7.8	1344	1.3	1118	324	161	11	2.1	200.5	10.9	303	1	0.74	0.12	22.77%
DD002A	DD002A-351	311	312	1181	36.4	12.1	22.7	57.7	6.1	594.1	1	527	143	81.6	7.3	1.7	162.3	8.3	476	2	0.33	0.08	23.41%
DD002A	DD002A-352	312	313	783.2	29.7	9.9	16.3	44.4	5.1	403.3	0.9	340	92.8	54.1	5.8	1.4	137.3	7.7	682	1	0.23	0.08	22.25%
DD002A	DD002A-353	313	314	1682	30.4	9.6	22.2	54.4	4.8	832.7	0.8	655	186	90.8	6.6	1.2	127	6.8	634	2	0.44	0.32	22.55%
DD002A	DD002A-354	314	315	2688	75.4	25	47.9	123	12.9	1256	1.9	1121	302	171	15	3.2	322	16.5	501	5	0.73	0.36	22.88%
DD002A	DD002A-355	315	316	4742	36.2	10.6	39.6	89.5	5.6	2600	0.8	1450	474	164	9.2	1.3	134.9	6.8	3127	4	1.14	0.10	19.64%
DD002A	DD002A-356	316	317	2168	9.4	2.5	18.9	35.8	1.1	1053	0.2	716	225	86.3	3	<0.5	24.1	1.8	1485	3	0.51	0.23	21.60%
DD002A	DD002A-357	317	318	3417	58.2	16.1	50.7	118	8.5	1638	1.3	1323	378	191	13	2	208.7	11.4	3239	233	0.87	0.24	22.79%
DD002A	DD002A-358	318	319	3845	48	14.7	53.7	116	7.2	1775	1	1572	441	222	12	1.7	188.8	8.7	1143	20	0.97	0.13	24.14%
DD002A	DD002A-359	318	319	3800	47.9	14.1	53.1	118	7.3	1779	1	1602	439	214	11	1.7	189.3	8.8	1931	1	0.97	0.12	24.54%
DD002A	DD002A-360	319	320	4026	102.6	30.5	74.3	177	15.9	1941	2.2	1688	466	269	21	3.7	389	18.8	2068	4	1.08	0.06	23.23%
DD002A	DD002A-361	320	321	3973	111.6	30.9	73.8	182	17.1	1855	2.3	1614	453	252	22	3.7	420.8	19.3	276	2	1.06	0.02	22.76%
DD002A	DD002A-362	321	322	2190	30.9	9	30	65.7	4.4	1003	0.7	862	247	115	7.2	1.1	116.3	6.1	615	2	0.55	0.01	23.56%
DD002A	DD002A-363	322	323	4549	103.4	31.3	79.2	190	16	2272	2.4	1792	506	286	22	4.1	403.4	20.8	479	3	1.21	0.02	22.25%
DD002A	DD002A-364	323	324	3993	70	21.4	68.6	151	11.1	2034	1.7	1613	452	257	15	2.7	276.7	14.3	413	<1	1.05	0.02	22.88%
DD002A	DD002A-365	324	325	3307	50.3	15	50.8	110	7.7	1494	1.1	1375	376	205	11	1.9	190.8	9.3	562	2	0.84	0.03	24.20%
DD002A	DD002A-366	325	326	5048	124.4	35.9	86.9	214	19.4	2619	2.7	1964	557	316	25	4.6	477.8	23	1700	1	1.35	0.11	21.76%
DD002A	DD002A-367	326	327	4437	65.6	18.6	65	145	9.9	2281	1.3	1642	475	238	16	2	239.6	11	1110	<1	1.13	0.12	21.85%
DD002A	DD002A-368	327	328	3079	82.8	25.2	55.6	133	13.2	1386	1.5	1303	350	199	16	2.7	322.8	12.9	2251	1	0.82	0.11	23.54%
DD002A	DD002A-369	328	329	2832	48.9	15.1	39.4	90.8	7.5	1261	1	1223	331	163	11	1.8	201.7	8.6	1635	<1	0.73	0.08	24.80%
DD002A	DD002A-370	329	330	2835	44.7	13.2	41.5	91.1	6.7	1259	0.9	1228	331	171	9.9	1.6	178	7.9	743	1	0.73	0.20	24.95%
DD002A	DD002A-371	330	331	2885	98.3	30.8	54.3	139	16	1265	2	1256	341	197	18	3.7	394.4	16.7	563	6	0.79	0.13	23.63%
DD002A	DD002A-372	330	331	2933	128.1	40.4	62.7	168	21.2	1264	2.7	1324	349	220	23	5	518.8	22.8	805	81	0.83	0.14	23.45%
DD002A	DD002A-373	331	332	2836	51.8	16.7	38.8	88.9	8.5	1256	1	1178	327	159	11	2	215.1	8.6	430	3	0.73	0.17	24.16%
DD002A	DD002A-374	332	333	2756	75.4	26.2	45.2	110	12.4	1225	1.8	1162	317	167	14	3.3	320.9	15.6	214	1	0.73	0.18	23.51%
DD002A	DD002A-375	333	334	2985	112.7	40.5	62.9	158	20.2	1310	2.9	1127	358	221	21	5.1	498.6	24.5	392	2	0.84	0.12	23.77%
DD002A	DD002A-376	334	335	3305	58.8	19	54	116	9.1	1455	1.4	1433	382	208	12	2.3	239.3	11.6	814	<1	0.86	0.10	24.73%
DD002A	DD002A-377	335	336.25	2948	57.5	19.2	50.8	114	9.3	1301	1.5	1282	346	190	12	2.4	245.7	12.8	396	22	0.77	0.19	24.57%
DD002A	DD002A-378	336.25	337	5451	22.5	7.3	52.9	94.3	3.3	3023	0.6	1860	565	243	7.4	0.7	78.5	5	202	&			

For personal use only

Hole_ID	Sample No	Depth From (m)	Depth To (m)	Ce ppm	Dy ppm	Er ppm	Eu ppm	Gd ppm	Ho ppm	La ppm	Lu ppm	Nd ppm	Pr ppm	Sm ppm	Tb ppm	Tm ppm	Y ppm	Yb ppm	Nb ppm	Mo ppm	TREO%	Nb2O5%	NdPr%
DD002A	DD002A-404	359	360	2448	75.1	30.3	41.7	110	13.6	1105	2.7	1013	275	155	14	4.3	376.1	23	162	2	0.67	0.19	22.49%
DD002A	DD002A-405	360	361	1913	66.6	25.7	39.3	98.3	11.7	801	2.1	875	225	138	12	3.2	312	17.9	73	20	0.53	0.07	24.06%
DD002A	DD002A-406	361	362	2499	76.5	28.6	45.3	111	13.3	1189	2.5	1012	278	162	14	4.1	362.6	21.4	257	147	0.68	0.07	22.02%
DD002A	DD002A-407	362	363	2395	85.7	32.3	49.4	125	15.1	999.3	2.9	1101	286	178	16	4.4	400.2	24.7	126	2	0.67	0.13	24.10%
DD002A	DD002A-408	363	364	2349	89.5	36.6	49.3	126	16.2	979.9	3.3	1108	285	174	16	5.1	451.2	28.2	144	3	0.67	0.22	24.18%
DD002A	DD002A-409	364	365	2681	83.1	33.5	51.7	126	15	1120	3.1	1229	319	189	16	4.8	396.2	26.5	45	3	0.74	0.36	24.43%
DD002A	DD002A-410	365	366	2385	76.5	27.7	45.9	112	12.6	992.4	2.4	1115	285	165	14	3.7	337.8	20.9	120	10	0.66	0.14	24.86%
DD002A	DD002A-411	366	366.8	2042	105.5	39.3	39.8	115	18.5	888.6	3.7	882	235	132	17	5.7	492.9	31.5	115	10	0.59	0.41	21.92%
DD002A	DD002A-412	366	366.8	2148	100.1	38.2	40.7	113	18.2	940.1	3.5	925	248	138	17	5.5	474.3	30.3	122	<1	0.62	0.24	22.18%
DD002A	DD002A-413	366.8	368	1664	93.2	39.5	35.6	107	17.6	808.9	4.3	667	183	115	16	6.3	456.6	36.9	115	<1	0.50	0.09	19.80%
DD002A	DD002A-414	368	369	1711	99	36.6	42	123	16.6	754.4	4.6	793	203	138	17	6	437.9	39.7	239	1	0.52	0.04	22.32%
DD002A	DD002A-415	369	370	1844	36.4	15	27.6	65.2	6.6	883.2	1.9	737	202	103	7.2	2.5	176.1	16.6	157	<1	0.48	0.06	22.64%
DD002A	DD002A-416	370	371	1957	66.4	25.7	34.3	91.6	11.6	910.1	2.9	802	219	126	12	3.9	297.4	25	202	<1	0.54	0.15	22.12%
DD002A	DD002A-417	371	372	1034	28.7	12.5	18.3	44.7	5.4	534.9	1.6	444	123	67.1	5.2	2.1	147.5	25	202	<1	0.29	0.12	22.67%
DD002A	DD002A-418	372	373	633.3	17.5	8.7	9.9	25.8	3.3	343.6	1.2	244	69.9	34.4	3.3	1.4	96.8	10.4	172	1	0.18	0.05	20.74%
DD002A	DD002A-419	373	374.05	2473	39.9	16.6	32.5	74.1	6.9	1149	1.9	947	269	132	8.3	2.5	186.1	16.2	110	<1	0.63	1.73	22.60%
DD002A	DD002A-420	374.05	375	3086	56.4	22	47.8	108	9.6	1399	2.6	1239	342	174	12	3.6	254.6	22.2	95	<1	0.80	0.95	23.21%
DD002A	DD002A-422	375	376	3216	62	23.3	49.3	116	10.1	1436	2.8	1303	361	187	13	3.7	284.3	23.6	88	<1	0.83	0.71	23.34%
DD002A	DD002A-423	376	376.85	3008	51.8	19.8	45.4	101	8.3	1333	2.5	1224	341	175	11	3.1	229.1	21	158	3	0.77	0.71	23.69%
DD002A	DD002A-424	376.85	378	535.9	11.2	4.1	6.7	16.1	1.9	356.9	0.4	170	53.9	22.7	1.9	0.6	49.3	3.3	177	3	0.14	0.02	18.00%
DD002A	DD002A-425	378	379	364.1	8.5	3.7	5.1	12.5	1.6	234.4	0.5	118	36.4	16.2	1.7	0.6	45.8	3.9	603	1	0.10	0.01	17.95%
DD002A	DD002A-426	378	379	339.4	9.8	4.4	5	13.2	1.7	219.9	0.4	113	34.8	15	1.7	0.6	46.7	3.7	696	2	0.10	0.01	18.18%
DD002A	DD002A-427	379	380	1983	46.1	15.8	28.2	71.6	7.6	983.3	1.8	718	206	104	8.9	2.4	204.3	15	1005	2	0.52	0.26	20.89%
DD002A	DD002A-428	380	381	3044	58.5	20.6	47.6	111	9.5	1372	2.7	1254	344	182	12	3.4	258.1	23.1	140	2	0.79	0.39	23.57%
DD002A	DD002A-429	381	382	3461	80.8	29	57	138	13.3	1540	3.6	1425	391	215	16	4.6	355	30.7	606	<1	0.91	0.39	23.28%
DD002A	DD002A-431	382	383	3425	105.9	39.5	62.3	162	17.8	1515	4.4	1446	390	228	20	6.3	473	38	849	2	0.93	0.59	22.99%
DD002A	DD002A-432	383	384	2816	90.2	36.7	49.8	129	16	1274	4.7	1161	317	178	16	6	431.6	39.8	1769	1	0.77	0.24	22.36%
DD002A	DD002A-433	384	385	3569	125.6	46.7	70.4	178	21.5	1591	5.6	1545	411	245	23	7.5	570.2	47.6	1858	4	0.99	0.10	22.97%
DD002A	DD002A-434	385	386	3584	108.5	39.7	66.4	164	18	1614	4.5	1524	410	233	20	6.3	465.9	38.8	768	3	0.97	0.03	23.17%
DD002A	DD002A-435	386	387	3467	141	51.3	71.7	190	24.5	1510	5.1	1498	399	238	25	7.7	630.2	43.3	876	<1	0.98	0.04	22.67%
DD002A	DD002A-436	387	388	3557	55.2	18.8	57.3	127	8.5	1556	2.9	1504	409	224	13	3	223.9	24.7	3199	1	0.91	0.03	24.47%
DD002A	DD002A-437	388	389	3525	44.6	17.2	54.4	115	7	1544	3	1520	406	215	11	2.8	187.2	26.1	3208	2	0.90	0.03	24.98%
DD002A	DD002A-438	389	390	3460	42.9	13.7	59.8	125	6.1	1530	2.1	1504	400	234	11	2.3	157.7	18.2	1579	2	0.89	0.01	25.07%
DD002A	DD002A-439	389	390	3532	42	13	59.6	124	6.1	1561	2.2	1535	406	227	12	2.2	155.9	18.4	2772	2	0.90	0.01	25.14%
DD002A	DD002A-440	390	391	3440	64.3	22.9	61.4	141	10.1	1498	2.8	1484	396	222	15	3.7	272.8	24.2	3008	2	0.90	0.27	24.44%
DD002A	DD002A-441	391	392	3302	82.1	30.4	59.6	141	13.5	1549	2.9	1465	392	224	16	4.2	353.2	25.1	2403	3	0.90	0.26	24.11%
DD002A	DD002A-442	392	393	3239	98.7	36.2	60.9	150	16.8	1501	2.8	1447	385	224	18	4.7	431.9	23.6	2316	2	0.90	0.52	23.83%
DD002A	DD002A-443	393	394	3257	70.6	23.8	55.3	130	11.2	1505	1.8	1425	385	214	14	2.9	277.8	15.7	3019	3	0.87	0.87	24.38%
DD002A	DD002A-444	394	395	3327	73.8	22.6	57.9	136	11.2	1557	1.5	1462	393	216	15	2.7	271.5	12.9	1531	3	0.89	0.53	24.42%
DD002A	DD002A-445	395	396	3294	68.2	19	61.1	139	9.6	1541	1.2	1512	396	233	15	2.2	229.1	10.4	1202	2	0.88	0.28	25.23%
DD002A	DD002A-446	396	397	2141	48.9	14.4	37.5	90.1	7.5	1020	0.9	929	250	143	10	1.5	179.8	8	2386	2	0.57	0.11	24.02%
DD002A	DD002A-447	397	398	3227	61.4	16.9	58	128	9.2	1525	0.9	1431	384	220	14	1.8	218.2	8.1	453	2	0.86	0.06	24.74%
DD002A	DD002A-448	398	399	3178	69.4	18.4	60.4	139	10.1	1465	1	1428	379	224	15	1.9	229.5	8.4	457	1	0.85	0.01	24.89%
DD002A	DD002A-449	399	400	3180	70.5	20	59	139	10.4	1487	1.2	1428	378	221	15	2	246.4	10.3	598	2	0.85	0.51	24.74%
DD002A	DD002A-450	400	401	2699	52.8	13.7	49.3	110	7.4	1280	0.8	1191	320	182	12	1.6	176.6	6.8	603	1	0.72	0.14	24.65%
DD002A	DD002A-451	401	402	3160	65.1	17	60.7	136	9	1468	0.9	1440	381	225	14	1.7	216.8	7.9	396	1	0.84	0.03	25.18%
DD002A	DD002A-452	401	402	3143	63	16.5	60.1	133	9	1451	0.9	1426	380	225	14	1.8	212.8	7.8	261	1	0.84	0.04	25.18%
DD002A	DD002A-453	402	402.95	3198	67.5	18.5	60.7	141	9.9	1463	1	1452	381	226	15	1.9	232.7	8.8	1157	3	0.85	0.12	25.09%
DD002A	DD002A-454	402.95	404	2515	47.2	13.2	46.2	105	7	1149	0.7	1128	300	172	11	1.5	162.1	6.3	842	1	0.66	0.81	25.10%
DD002A	DD002A-455	404	405	3081	65.6	18.8	56.9	130	9.7	1365	1.1	1405	370	213	14	2.1	228	9.2	770	2	0.82	0.11	25.36%
DD002A	DD002A-456	405	406	3199	62.8	19	56.9	129	9.6	1513	1.2	1420	376	208	14	2.1	232.6	9.9	1661	2	0.85	0.43	24.65%
DD002A	DD002A-457	406	407	3206	69.8	21.1	55.6	133	10.9	1510	1.3	1395	378	210	15	2.2	264.5	10.8	1096	2	0.85	0.41	24.22%
DD002A	DD002A-458	407	408	2987	65.9	19.6	53.5	126	10.2	1396	1.1	1349	354	206	14	2.1	236.1	9.7	582	3	0.80	0.34	24.82%
DD002A	DD002A-459	408	408.75	2961	62.1	18.1	52.8	121	9.3	1394	1.2	1328	351	198	13	2.1	223.7	10	373	3	0.79	0.56	24.78%
DD002A	DD002A-460	408.75	409.88	863.1	17.3	6.7	11.8	29.3	2.9	472.3	0.7	313	90.3	45.9	3.2	0.9	72.8	5.9	438	4	0.23	0.08	20.71%
DD002A	DD002A-462	409.88	411	620	16.2	6.3	9.6	24.5	2.9	330	0.6	232	65	34.9	3	0.8	69.8	4.8					

Hole_ID	Sample No	Depth_From (m)	Depth_To (m)	Ce ppm	Dy ppm	Er ppm	Eu ppm	Gd ppm	Ho ppm	La ppm	Lu ppm	Nd ppm	Pr ppm	Sm ppm	Tb ppm	Tm ppm	Y ppm	Yb ppm	Nb ppm	Mo ppm	TREO%	Nb2O5%	NdPr%
DD002A	DD002A-488	433.05	434.3	563.9	11.1	4.6	7.8	19	2	297.3	0.4	210	59.3	31	2.2	0.6	50.3	3.5	579	2	0.15	0.17	21.20%
DD002A	DD002A-489	434.3	435	442.8	24.4	11.7	7.7	26.7	4.7	266.9	1.1	140	42.3	27.3	3.8	1.6	128.5	9.4	1110	1	0.13	0.02	15.84%
DD002A	DD002A-490	435	435.7	484.9	22.8	9.8	8.2	25.8	4.3	290.1	1	160	47.1	29	3.7	1.5	116.4	8.2	1256	2	0.14	0.02	16.93%
DD002A	DD002A-491	435.7	437	637.7	12.1	4.2	7.3	19.2	2	385.5	0.4	225	67.8	31.5	2.4	0.6	54.3	3.2	1428	1	0.17	0.02	20.02%
DD002A	DD002A-492	435.7	437	962.7	17.5	6.6	11	29.1	3	577.4	0.5	328	97.8	45.2	3.4	0.7	75.6	4.5	5095	2	0.25	0.06	19.58%
DD002A	DD002A-493	437	438	1102	20.6	8.5	12.2	32.9	3.6	614.7	0.8	373	111	49.8	3.8	1.1	96.2	7	1277	1	0.29	0.03	19.75%
DD002A	DD002A-494	438	439	1021	25.2	12.4	12.4	33.3	4.8	578.2	1.5	344	103	48.1	4.2	1.9	124.9	13	977	<1	0.27	0.02	19.05%
DD002A	DD002A-495	439	440	527.5	13.4	6.1	6.1	18.2	2.5	308.3	0.7	173	53.1	23.2	2.4	0.9	67.7	6.1	115	2	0.14	0.05	18.55%
DD002A	DD002A-496	440	441	2327	53.1	18	36.2	90.7	8.5	1103	1.3	967	262	138	10	2.3	205.3	11.2	1019	1	0.61	0.40	23.37%
DD002A	DD002A-497	441	442.25	700.4	14.8	5.9	8.4	23.9	2.7	409.2	0.5	228	69.4	34.1	2.9	0.8	66.8	4.5	1541	<1	0.18	0.06	18.80%
DD002A	DD002A-498	442.25	443	2897	61.6	18.8	49.1	117	9.3	1338	1.1	1274	341	195	13	2.1	221.5	9.8	271	3	0.77	0.54	24.55%
DD002A	DD002A-499	443	444	2795	65.6	19.8	48.3	117	10.1	1268	1	1235	329	188	14	2	232.6	8.8	750	3	0.74	0.85	24.59%
DD002A	DD002A-500	444	445	2686	58.4	18.4	46.6	110	9.4	1229	1	1173	314	176	13	1.8	217.8	8.6	203	9	0.71	0.73	24.42%
DD002A	DD002A-502	445	446	2794	62.5	19.1	49.2	115	9.8	1287	1	1215	325	182	13	2.1	234.2	8.9	172	53	0.74	0.63	24.25%
DD002A	DD002A-503	446	446.62	2973	56.3	16.6	51	115	8.5	1365	1	1301	345	191	13	1.7	202	8.4	263	48	0.78	0.23	24.66%

Drill Collar DD003 (Dominant Mineralisation highlighted **REE Nb**)

Hole_ID	Sample No	Depth_From (m)	Depth_To (m)	Ce ppm	Dy ppm	Er ppm	Eu ppm	Gd ppm	Ho ppm	La ppm	Lu ppm	Nd ppm	Pr ppm	Sm ppm	Tb ppm	Tm ppm	Y ppm	Yb ppm	Nb ppm	Mo ppm	TREO%	Nb2O5%	NdPr%
DD003	DD003-001	0	1	3473.5	35.6	11	31	71.9	5.5	2512	0.7	1003	328	124.5	7.9	1.3	141.6	6.5	778	43	0.91	0.11	17.10%
DD003	DD003-002	1	2	1521.2	26.8	8.5	18.7	45.4	4.1	956.1	0.6	503.6	154	70	5.3	1	106.6	5.4	618	34	0.40	0.09	19.09%
DD003	DD003-003	2	4	1873.6	61.9	33.7	26.6	70.5	12.6	1135	2.7	635.7	190	96.8	9.8	4.6	347.7	24.1	706	32	0.53	0.10	18.10%
DD003	DD003-004	4	5	3298.3	100	47.9	50.7	127	18.9	1695	3.7	1331	375	189.3	17.2	6.3	531.4	33.2	4132	27	0.92	0.59	21.65%
DD003	DD003-005	5	5.9	4754.3	96.1	43.2	74.9	171	17.9	2359	3	1967	552	288	18.9	5.6	491.9	26.9	1969	149	1.28	0.28	23.04%
DD003	DD003-006	5.9	7	2191.3	30.6	14	32.8	62.9	5.6	1071	1	886.4	249	139.4	6.1	1.8	157.5	9	2273	6	0.57	0.33	23.27%
DD003	DD003-007	7	8	1621.9	12.3	5.4	18.2	31.8	2.2	796.3	0.4	625.9	179	86.1	2.8	0.6	60.5	3.7	4219	7	0.40	0.60	23.26%
DD003	DD003-008	8	9.1	2852	58.9	23.1	43.9	98.1	9.9	1396	1.7	1161	327	169.4	11.5	2.9	269	15	8448	22	0.76	1.21	22.99%
DD003	DD003-009	9.1	10	1324.6	11.5	4.9	15	26.7	1.9	655.8	0.5	506.4	144	67.9	2.5	0.7	50.4	4.2	8676	7	0.33	1.24	23.01%
DD003	DD003-010	10	11	3523.9	66.1	23.3	59.3	133	10	1736	1.7	1479	410	231	14.5	3	275.1	15.8	6226	3	0.94	0.89	23.56%
DD003	DD003-011	11	12	4017.4	52.6	18.4	51	110	8.4	2276	1.3	1489	436	203	11.5	2.4	222.1	12.1	7563	14	1.04	1.08	21.51%
DD003	DD003-012	11	12	3598.9	52.2	18.2	49.3	108	8	1920	1.4	1382	397	192	11.6	2.4	222	12.8	7632	11	0.94	1.09	22.20%
DD003	DD003-013	12	13	3403.1	66.3	22.1	53.4	128	10.4	1675	1.5	1384	390	193.9	14.6	2.7	273.6	14	4776	2	0.90	0.68	23.13%
DD003	DD003-014	13	14	3094.3	67	23.9	49.8	116	11	1539	1.5	1258	356	178.6	14.1	2.8	290.1	13.7	2834	1	0.82	0.41	22.88%
DD003	DD003-015	14	15	3027.2	85.7	33	56.7	131	14.4	1484	2.1	1344	357	210.2	16.3	3.8	396.8	19.4	2478	6	0.84	0.35	23.54%
DD003	DD003-016	15	16	2743.3	61.5	21.8	54	118	9.9	1316	1.4	1243	329	194.5	13.4	2.5	267.7	13.1	1398	3	0.75	0.20	24.47%
DD003	DD003-017	16	17	3048.6	79.1	24.4	76.1	169	11.6	1492	1.5	1426	365	266.9	18.3	2.8	310.3	14.1	3221	5	0.86	0.46	24.40%
DD003	DD003-018	17	18	3051.2	58.9	16.6	56.6	126	8.4	1484	1	1350	359	212.4	13.7	1.9	219.9	9.3	1835	4	0.82	0.26	24.42%
DD003	DD003-019	18	19	2892.7	66.2	19	55.6	129	9.5	1406	1.2	1280	341	205.9	14.8	2.1	253.9	10.6	1589	7	0.78	0.23	24.12%
DD003	DD003-020	19	20	3068.7	66.9	20.4	58.9	132	10	1484	1.3	1366	367	221.1	15	2.4	263.1	11.5	1733	3	0.83	0.25	24.34%
DD003	DD003-022	20	21	3132.6	64.3	21.6	56.1	123	9.8	1545	1.3	1366	368	210.1	13.6	2.4	271.1	11.6	2373	6	0.84	0.34	23.98%
DD003	DD003-023	21	22	2938.5	67.9	23.8	46.6	110	10.9	1474	1.4	1183	335	171.7	13.7	2.7	293.4	12.4	1414	5	0.78	0.20	22.59%
DD003	DD003-024	22	23	2867.9	62.6	21.2	46.8	109	9.9	1418	1.3	1139	322	168.5	12.8	2.4	266.4	12.1	2302	6	0.76	0.33	22.50%
DD003	DD003-025	23	24	2755.2	70.8	25.7	50.4	115	11.4	1333	1.7	1167	320	176.7	14	3	322.6	15.1	1755	7	0.75	0.25	23.16%
DD003	DD003-026	23	24	2632.7	72.8	26.2	47.9	114	11.9	1264	1.7	1113	306	173.4	14.1	3.1	324.5	15.1	1757	4	0.72	0.25	23.04%
DD003	DD003-027	24	25	2896.1	71.2	24.6	47.3	113	11.7	1452	1.5	1202	332	175.8	13.7	2.9	313	13.7	2577	5	0.78	0.37	22.87%
DD003	DD003-028	25	26	3467.3	92.2	30.1	61.1	147	14.6	1746	1.7	1431	396	221.9	18.5	3.2	378.4	15	2939	8	0.94	0.42	22.64%
DD003	DD003-029	26	27	2804.9	78.8	24.6	55.6	134	12	1353	1.4	1227	329	199	16.6	2.7	310.1	12.4	2307	16	0.77	0.33	23.58%
DD003	DD003-031	27	28	2812.7	71.1	20.8	54.2	128	10.4	1330	1.1	1244	334	196.3	15.1	2.1	268.8	9.9	2889	3	0.76	0.41	24.16%
DD003	DD003-032	28	29	2921.1	67.7	19.8	55.5	129	10.2	1369	1.1	1325	351	208	14.8	2.1	257.9	9.7	989	3	0.79	0.14	24.73%
DD003	DD003-033	29	30	2770	59.3	17.9	52	117	8.8	1281	0.9	1272	333	195.1	13.2	1.9	228.3	8.2	830	3	0.75	0.12	25.12%
DD003	DD003-034	30	31	2847.4	67.8	20.5	54.9	127	10.3	1335	1.1	1275	339	201.3	15.1	2.3	261.8	9.6	983	2	0.77	0.14	24.44%
DD003	DD003-035	31	32	2967.2	59.7	19.4	47.2	107	9.4	1427	1	1307	351	181.6	13	2	247.1	8.7	670	3	0.79	0.10	24.45%
DD003	DD003-036	32	33	3300.7	80.3	25.2	54.1	129	12.4	1580	1.3	1426	387	201.2	16.3	2.5	310.7	11.5	415	15	0.88	0.06	23.92%
DD003	DD003-037	33	34	3016.5	37.9	12.1	39.6	84.5	5.8	1488	0.6	1236	345	163.8	8.6	1.2	148.7	5.3	457	2	0.77	0.07	23.88%
DD003	DD003-038	34	35	3340	42.2	12	46.9	99.1	6.3	1656	0.6	1411	391	191.2	10	1.3	161.2	5.2	123	2	0.86	0.02	24.34%
DD003	DD003-039	34	35	3393.1	44.4	13	47.9	101	6.6	1653	0.6	1441	395	195.2	10.2	1.2	167.2	5.3	127	2	0.88	0.02	24.47%
DD003	DD003-040	35	36	3152.7	70.1	20	49.9	121	10.6	1545	0.9	1308	362	186.9	14.6	2	262.5	8.4	107	3	0.83	0.02	23.35%
DD003	DD003-041	36	37	3202.5	70.3	19.6	52.9	125	10.3	1552	0.9	1341	371	198.1	15	1.9	259.9	8.5	148	2	0.85	0.02	23.56%
DD003	DD003-042	37	38	3022.4	35.9	9.8	46.9	97	4.9	1482	0.5	1269											

For personal use only

Hole_ID	Sample No	Depth From (m)	Depth To (m)	Ce ppm	Dy ppm	Er ppm	Eu ppm	Gd ppm	Ho ppm	La ppm	Lu ppm	Nd ppm	Pr ppm	Sm ppm	Tb ppm	Tm ppm	Y ppm	Yb ppm	Nb ppm	Mo ppm	TREO%	Nb2O5%	NdPr%
DD003	DD003-061	55	56	3356.6	40.3	11.5	28	69	6.2	2249	0.7	895.4	301	105.7	8.7	1.3	153.9	6.7	731	51	0.85	0.10	16.47%
DD003	DD003-062	56	57	1910.3	43.6	13.9	25.8	67.5	6.9	1062	0.9	658.3	197	92.9	8.8	1.5	176.5	7.8	1029	118	0.50	0.15	19.91%
DD003	DD003-063	57	58	3622.4	89.1	29.4	59.1	142	14.4	1800	1.8	1497	414	213.1	17.8	3.6	378.3	16.5	3325	176	0.97	0.48	22.89%
DD003	DD003-064	58	59	3456.7	83.1	26.2	61.9	149	12.7	1682	1.5	1474	398	220.3	17.6	2.9	334.1	13.4	1437	69	0.93	0.21	23.47%
DD003	DD003-065	59	60	2587.9	24.6	7.6	28.9	58.2	3.6	1362	0.5	975.2	280	122.3	5.9	0.8	98.1	4.2	1082	156	0.65	0.15	22.49%
DD003	DD003-066	59	60	2512.5	24.8	7.7	27.4	56.6	3.6	1317	0.5	941.5	271	118.7	5.5	0.9	95.3	4.9	1054	136	0.63	0.15	22.42%
DD003	DD003-067	60	61	3493.7	81.9	24.2	58.7	142	12.1	1733	1.5	1463	400	211.1	17.5	2.7	321.5	13.8	825	4	0.94	0.12	23.24%
DD003	DD003-068	61	62	3012.5	74.7	24.9	49.1	118	11.5	1576	1.5	1235	340	185.9	15.2	2.8	308.4	13.6	429	2	0.82	0.06	22.48%
DD003	DD003-069	62	63	2598	59.4	20.7	40.7	90.8	9.9	1319	1.2	1071	293	153.8	11.7	2.4	261.1	11.3	262	4	0.70	0.04	22.82%
DD003	DD003-071	63	64	2486	78.9	27.2	45.1	115	13.1	1221	1.7	1067	287	161.2	15.3	3.2	348.9	15.5	361	1	0.69	0.05	22.85%
DD003	DD003-072	64	65	2101.5	34.5	12.1	33.6	70.3	5.4	998.9	0.7	906.3	244	130.3	7.6	1.4	149.9	6.3	249	<1	0.55	0.04	24.35%
DD003	DD003-073	65	66	2570.2	35.1	11.1	40.9	83	5.5	1226	0.6	1136	302	168.5	8.2	1.3	144.7	5.5	236	1	0.67	0.03	24.96%
DD003	DD003-074	66	67	2464.8	94.5	31.2	59.3	145	15	1166	1.7	1176	300	208	18.4	3.3	402.3	15.3	90	2	0.72	0.01	24.02%
DD003	DD003-075	67	68	2846.3	82.4	25.4	59.4	142	13.1	1382	1.4	1303	338	219	16.8	2.8	332.4	12.8	262	1	0.80	0.04	24.07%
DD003	DD003-076	68	69	3113.6	45.7	14.3	50	106	6.9	1501	0.8	1359	366	201.1	11	1.4	180.4	6.9	1335	2	0.82	0.19	24.67%
DD003	DD003-077	69	70	2754	22.3	7.2	30.7	60.1	3.3	1487	0.5	1075	305	135.1	5.4	0.9	86.3	4.4	816	50	0.70	0.12	23.01%
DD003	DD003-078	70	71	3905	130.1	49.3	82	201	22.4	1874	3.1	1691	454	292.9	25.9	5.7	578.2	27.9	1005	5	1.10	0.14	22.81%
DD003	DD003-079	70	71	3875.4	132.5	49.1	81.8	203	22.1	1864	3	1672	452	284.2	26	5.7	593.1	27.6	1004	4	1.09	0.14	22.71%
DD003	DD003-080	71	72	3696.2	101.6	31.9	69.5	169	16.1	1827	1.9	1531	420	250.2	21	3.7	411.2	17.3	489	13	1.01	0.07	22.64%
DD003	DD003-081	72	73	2739.1	42.7	12.9	51.3	108	6.3	1290	0.8	1241	324	202.5	10.4	1.5	168.4	7.2	345	12	0.73	0.05	25.11%
DD003	DD003-082	73	74	2787.4	71.1	22.5	55.1	129	10.6	1349	1.3	1241	327	203.4	14.9	2.4	286.2	11.8	829	4	0.76	0.12	23.95%
DD003	DD003-083	74	75	2572.2	83.5	27	55.5	136	12.8	1216	1.5	1151	301	195.3	17	3	349.9	13.9	1080	2	0.72	0.15	23.52%
DD003	DD003-084	75	76	2843.1	66.1	22.1	53.9	125	10.3	1342	1.4	1251	333	199.9	13.6	2.5	269	12.6	848	3	0.77	0.12	24.07%
DD003	DD003-085	76	77	3515	88.3	31.3	68.1	161	14.3	1730	2	1506	406	248	18.3	3.5	370.7	17.7	763	4	0.96	0.11	23.25%
DD003	DD003-086	77.3	78	2527.9	69	25.3	37.8	96.9	11.4	1423	1.6	904.6	263	129.2	13.2	2.7	303.9	14.1	1304	52	0.68	0.19	19.92%
DD003	DD003-087	78	79	1228.4	33.2	14.1	16.1	42	6.3	727.5	0.9	393.2	121	59.5	6.2	1.6	168.4	8.6	848	37	0.33	0.12	18.06%
DD003	DD003-088	79	80	1452.9	23.7	9.4	17.1	41.4	4	888.5	0.5	446.7	138	63.1	4.8	1.1	107.7	4.8	721	92	0.38	0.10	18.15%
DD003	DD003-089	80	81.1	974.3	23.8	12.5	12.3	31.4	5	588.1	0.8	298.5	94	42.9	4.2	1.5	135.1	7.5	296	54	0.26	0.04	17.46%
DD003	DD003-090	81.1	82	1405.7	50.8	21	19.8	55	9.3	825.5	1.5	450.7	137	65.5	8.8	2.6	245.6	13.9	420	49	0.39	0.06	17.61%
DD003	DD003-091	82	83	1247.7	48.9	14.6	17.5	49.5	7.9	773	0.7	387.4	120	56.9	8.4	1.4	205.9	5.9	494	126	0.35	0.07	17.09%
DD003	DD003-092	82	83	1473.1	50.7	15.3	17.9	53.2	8.1	892.2	0.7	458.5	143	66.9	8.7	1.4	215	6	535	194	0.40	0.08	17.50%
DD003	DD003-093	83	84	3232.5	104.6	31.8	39.7	109	17.4	1949	1.4	1072	324	148.5	17.3	3.1	448.1	13	1699	64	0.88	0.24	18.45%
DD003	DD003-094	84	85	1702.7	56	19.1	19.5	54.7	9.7	1036	0.9	506.6	160	70.1	9	1.8	256.8	8.3	1550	62	0.46	0.22	16.91%
DD003	DD003-095	85	86	1428.6	25.5	9.6	21.5	50.3	4.2	814.8	0.6	501.3	148	78.1	5.5	1.1	110	5.7	875	62	0.38	0.13	20.15%
DD003	DD003-096	86	87	2380.3	23.1	8.4	19.7	44.9	3.8	1731	0.5	634.8	212	78.9	4.9	0.9	99	4.9	382	91	0.61	0.05	16.07%
DD003	DD003-097	87	88	1670.4	34.4	13.7	19.2	50.3	6.4	1118	0.8	496.5	156	72.4	6.7	1.5	163.4	7.2	705	64	0.45	0.10	16.99%
DD003	DD003-098	88	89.1	3460.8	53	14.8	33.9	85.3	8	2499	0.8	941.6	310	123.5	10.6	1.4	191.9	7	1576	73	0.91	0.23	16.09%
DD003	DD003-099	89.1	90	3532.4	64.1	19.1	49.7	115	9.8	1678	1	1498	413	199.6	13.8	2	258	9.1	500	5	0.92	0.07	24.19%
DD003	DD003-100	90	91	2663.1	90.4	29.6	49.9	126	14.4	1264	1.6	1184	316	182.4	16.6	3.2	380.1	14.8	425	3	0.74	0.06	23.52%
DD003	DD003-102	91	92	2804.8	107.8	36.6	58.5	153	17.3	1320	2.1	1220	330	199.6	20.5	3.9	466.9	18.7	516	29	0.79	0.07	22.77%
DD003	DD003-103	92	93	2701.2	79.6	25	48.7	123	12.3	1269	1.4	1190	319	181	15.7	2.6	318.8	12.5	239	8	0.74	0.03	23.81%
DD003	DD003-104	93	94	2841.8	65.1	20	41.2	103	10.2	1367	1.2	1185	323	158.7	13.5	2.1	266.4	10.6	264	4	0.75	0.04	23.41%
DD003	DD003-105	94	95	2899.7	53.5	15.6	35.9	89.8	8.1	1747	0.9	964	288	132.3	11.4	1.6	208.1	8.6	822	91	0.76	0.12	19.27%
DD003	DD003-106	94	95	2923.6	53.9	16.1	36.3	90.6	8.3	1769	0.9	967.3	295	133.4	11.4	1.9	206.5	8.5	825	92	0.77	0.12	19.26%
DD003	DD003-107	95	96	1966.9	26.8	7.2	21.6	52.4	3.7	1224	0.5	587.5	186	79	5.9	0.8	98.3	4.5	693	101	0.50	0.10	18.06%
DD003	DD003-108	96	97	3005	27.3	7.4	25.4	57.8	3.9	2133	0.5	795.6	265	96.3	6.4	0.9	97.3	4.3	708	151	0.76	0.10	16.19%
DD003	DD003-109	97	98	1867	27.5	9.7	14.6	38.1	4.6	1288	0.7	470.2	160	56	5.3	1.1	122.4	6.2	260	130	0.48	0.04	15.40%
DD003	DD003-111	98	99	2585	41.4	13.7	27.2	69.9	6.8	1662	0.8	795.6	252	106.2	8.5	1.5	167.7	7.4	787	142	0.67	0.11	18.15%
DD003	DD003-112	99	100	2739.8	45.7	15	28.7	75.1	7.2	1769	0.9	836.3	267	110.1	9.2	1.8	179.6	8.5	953	155	0.71	0.14	18.02%
DD003	DD003-113	100	101	2564.3	44.1	14.8	27.8	72.3	7	1664	0.8	770.1	246	104.6	9.1	1.7	172.6	7.5	801	141	0.67	0.11	17.72%
DD003	DD003-114	101	102	4438.1	34.7	9.1	34.3	80.1	4.5	3096	0.5	1223	412	140	8.6	0.9	104.7	4.9	1377	41	1.12	0.20	16.98%
DD003	DD003-115	102	103	7140	28.7	7.2	42.1	86.6	3.8	5026	0.4	1837	644	183	8.3	0.8	85.6	3.4	1223	21	1.77	0.18	16.36%
DD003	DD003-116	103	104	1170.3	44.3	14.3	15.2	47.6	7.4	711.7	0.7	334.8	109	48.9	7.7	1.5	184.2	6.1	736	66	0.32	0.11	16.30%
DD003	DD003-117	104	105	3650.9	48.7	15.2	25.9	69.7	7.7	2421	0.7	977.3	335	106	9.2	1.5	188.1	6.7	696	84	0.92	0.10	16.61%
DD003	DD003-118	105	106	1708.5	30.9	12.6	17.8	45.4	5.5	1016	0.7	540.1	166	71.1	5.6	1.4	142	6.1	646	80	0.44	0.09	18.63%
DD003	DD003-119	105	106	1648.8	29.7	12.4	17.1	45.6	5.8	989.9	0.7</												

For personal use only

Hole_ID	Sample No	Depth From (m)	Depth To (m)	Ce ppm	Dy ppm	Er ppm	Eu ppm	Gd ppm	Ho ppm	La ppm	Lu ppm	Nd ppm	Pr ppm	Sm ppm	Tb ppm	Tm ppm	Y ppm	Yb ppm	Nb ppm	Mo ppm	TREO%	Nb2O5%	NdPr%
DD003	DD003-144	129	130	1397.7	19.6	8.8	12	32	3.6	793.5	0.4	430.9	138	51.7	3.6	1	96.7	4.1	492	199	0.35	0.07	18.91%
DD003	DD003-145	130	131	1822.4	14.3	7.3	11.4	24.9	2.6	1017	0.6	531.1	180	54.8	2.7	1	67.7	5.1	9268	599	0.44	1.33	18.92%
DD003	DD003-146	130	131	1949.8	13.9	7.8	12.1	26.4	2.6	1090	0.5	565.1	190	57.3	2.8	0.9	70.9	4.8	9527	656	0.47	1.36	18.83%
DD003	DD003-147	131	132	527.9	21.6	11.7	7.8	23.3	4.5	288.9	0.7	178.5	54.8	30.2	3.3	1.4	118.2	6.7	302	78	0.15	0.04	18.07%
DD003	DD003-148	132	133	1213.4	25.6	10.7	12.3	32.1	4.6	671.1	0.5	373	119	46	4.2	1.1	123.1	4.5	534	456	0.31	0.08	18.52%
DD003	DD003-149	133	134	2419.7	17.2	6.5	18	39.9	2.8	1351	0.5	748.7	242	81.3	3.8	0.8	71.9	4.3	278	930	0.59	0.04	19.71%
DD003	DD003-151	134	135	1819.9	16.5	7.3	13.3	30.8	3.1	1063	0.5	550.1	181	61.3	3.2	0.9	80.7	4.9	664	146	0.45	0.10	18.97%
DD003	DD003-152	135	136	1799	17.8	6.5	14.1	33.7	3	1039	0.4	546.9	177	61.6	3.8	0.7	75	3.9	746	214	0.44	0.11	19.06%
DD003	DD003-153	136	137	8531.4	31.7	7.6	39.7	88.7	4.1	5334	0.4	2069	766	191.9	8.3	0.7	95.3	3.2	751	243	2.01	0.11	16.46%
DD003	DD003-154	137	138	1648.3	26.1	6.8	16.4	45.9	3.8	950.6	0.4	482.5	159	64.4	5.7	0.7	90.7	3.9	918	379	0.41	0.13	18.21%
DD003	DD003-155	138	139	428.5	24.7	8.5	9.1	27.4	4.2	241.1	0.6	161.2	45.8	29.2	4.2	0.9	103.3	5.1	308	41	0.13	0.04	18.75%
DD003	DD003-156	139	140	442.2	15.9	6.1	8.3	22.7	2.7	243	0.4	172.9	48.2	28.6	2.9	0.7	70.1	3.7	190	51	0.13	0.03	20.55%
DD003	DD003-157	140	141	431.4	19.2	8.5	10.2	29.8	3.4	231.8	0.6	181	48.4	34.6	3.9	1.1	90	5.4	234	28	0.13	0.03	20.70%
DD003	DD003-158	141	142	794	19.4	7.6	9.6	27.5	3.5	485.6	0.5	237.5	76.6	34.2	3.7	0.9	88.5	4.4	396	92	0.21	0.06	17.41%
DD003	DD003-159	141	142	1001.6	19.2	7.9	10.4	26.7	3.4	604.1	0.5	292.2	93.7	40.1	3.6	1	88.9	4.8	414	148	0.26	0.06	17.46%
DD003	DD003-160	142	143	3542	20.5	7.4	20.2	44.4	3.3	2287	0.5	921	325	94.8	4.8	0.8	81.6	4.2	559	284	0.86	0.08	16.88%
DD003	DD003-161	143	144	1709	17	6.3	12.5	29.7	2.7	957.7	0.5	505.5	165	56.2	3.3	0.9	71	4.6	409	283	0.42	0.06	18.86%
DD003	DD003-162	144	145	847.4	13.7	5.6	6.4	16.7	2.6	479.1	0.3	230.8	80.1	26.1	2.2	0.7	64.7	2.7	350	125	0.21	0.05	17.38%
DD003	DD003-163	145	146	5815.6	32.8	8.7	30	70.7	4.6	4204	0.6	1326	494	132.7	7.7	0.9	110.2	5.2	776	189	1.43	0.11	14.81%
DD003	DD003-164	146	146.7	3906.8	32.9	9	26.1	63.5	4.6	2738	0.7	977.3	347	104	7.4	1.1	112	6.1	925	140	0.98	0.13	15.82%
DD003	DD003-165	146.7	147.6	13244	37.5	8.5	64.6	135	4.2	10301	0.7	2968	1115	293.3	12.2	0.8	93.3	6.3	476	5	3.31	0.07	14.39%
DD003	DD003-166	147.6	148.4	6315	23.4	6	35.5	72.2	3	4357	0.5	1639	575	164	6.3	0.7	67.1	4.8	291	42	1.55	0.04	16.63%
DD003	DD003-167	148.4	149	5079.7	22.6	7.6	31.5	66.6	3.3	3116	0.9	1377	487	144.4	5.9	1.1	83.4	7.7	1656	563	1.22	0.24	17.81%
DD003	DD003-168	149	150	7310.1	9.5	3.7	33.6	60.4	1.3	4403	0.3	1920	688	174.5	3.9	<0.5	30.3	2.6	2158	2430	1.71	0.31	17.76%
DD003	DD003-169	150	151	3381.2	28	9.1	24	58.8	4.4	1981	0.7	1009	336	109.8	6.4	1.1	106.1	6.7	613	800	0.83	0.09	18.98%
DD003	DD003-170	151	152	725.3	21	8.5	9.3	26.7	4	401.2	0.5	244	74.6	36	3.7	0.9	98.7	4.9	413	55	0.20	0.06	19.07%
DD003	DD003-171	152	153	315.7	12.8	5.9	5.2	14.8	2.4	163.8	0.4	117.4	34	18.9	2.1	0.7	63.4	3.9	237	25	0.09	0.03	19.72%
DD003	DD003-172	152	153	199.4	10.3	4.5	3.5	11.3	2	100.3	0.4	76.6	21.9	14.4	1.6	0.5	51.1	3.2	242	21	0.06	0.03	19.47%
DD003	DD003-173	153	154	1287	10	4.3	9	20.3	1.7	738.2	0.3	386	128	41.3	2	0.6	45.7	2.6	329	210	0.31	0.05	19.12%
DD003	DD003-174	154	155	1339	8.9	4.2	10.8	22.4	1.4	775.2	0.3	422.1	137	47.1	2	0.6	39.7	2.6	699	503	0.33	0.10	19.80%
DD003	DD003-175	155	156	1120.4	13	6.4	8.5	21	2.6	654.2	0.4	316.9	106	36.2	2.5	0.8	67.1	3.8	578	542	0.28	0.08	17.82%
DD003	DD003-176	156	157	1239.5	22.6	7.7	10.6	29.8	3.8	732.1	0.5	355.2	118	42.2	4.2	0.9	95.8	4.5	470	107	0.31	0.07	17.63%
DD003	DD003-177	157	158	1490.1	13.3	4.8	10.3	26.2	2.2	890.7	0.4	417.7	139	47	2.7	0.6	57.1	3.6	553	134	0.36	0.08	17.85%
DD003	DD003-178	158	159	570.4	9	4.6	6.2	14.8	1.7	319.3	0.4	184.5	58.6	25.2	1.6	0.6	45.4	3.3	342	39	0.15	0.05	19.42%
DD003	DD003-179	159	160	815	11.4	4.9	7.8	19.9	2	472.7	0.4	251.8	80.7	33.2	2.1	0.7	52.6	3.5	338	39	0.21	0.05	18.82%
DD003	DD003-180	160	161	858.3	14.5	7	8.9	23.4	2.7	475.9	0.7	278.2	86	37.6	2.7	1	70.9	6.3	247	43	0.22	0.04	19.33%
DD003	DD003-182	161	162.1	925.8	17.8	6.2	9.6	26	3	508.4	0.3	287.3	92.2	37.2	3.2	0.6	73	3.2	388	52	0.23	0.06	18.94%
DD003	DD003-183	162.1	163	7156	58	18.2	55.5	130	8.8	4800	1.3	2010	662	227.4	13.6	2.3	207.8	12.2	828	139	1.80	0.12	17.33%
DD003	DD003-184	163	164	4404.2	84.6	29	61.8	152	13.5	2370	1.9	1721	488	245.3	17.7	3.4	335.9	17.2	1002	3	1.17	0.14	22.11%
DD003	DD003-185	164	165	3712.6	50.9	16.4	44.4	105	7.8	2045	1	1401	407	179.4	11.3	1.7	188.5	8.8	747	1	0.96	0.11	22.01%
DD003	DD003-186	164	165	3785	50.4	16.2	44.8	104	7.9	2069	1	1428	415	183.6	11.3	1.7	186.5	8.9	761	1	0.97	0.11	22.08%
DD003	DD003-187	165	166	4248.1	59	18.3	58	131	8.7	2282	1.1	1640	469	228.5	13.6	2.2	211.1	9.9	1103	1	1.10	0.16	22.39%
DD003	DD003-188	166	167	4603.7	52	16	58.8	127	7.7	2480	1	1750	505	243.6	12.6	1.7	176.9	9.2	1611	3	1.18	0.23	22.36%
DD003	DD003-189	167	168	4187	61.2	19.7	51.9	124	9.3	2281	1.3	1583	466	213.5	13.7	2.2	225.2	11.4	849	5	1.08	0.12	22.06%
DD003	DD003-191	168	169	4444.1	87.7	30.6	63.6	157	14.2	2385	1.9	1725	494	241.3	18.2	3.6	347.7	17.3	937	6	1.18	0.13	22.02%
DD003	DD003-192	169	170	4752.3	107.5	35.3	68.3	176	16.8	2664	2.2	1695	498	243	22	4	407.3	20.3	3469	5	1.26	0.50	20.37%
DD003	DD003-193	170	171	7402.3	40	12.5	52.5	113	5.7	4836	0.7	2042	692	227	10.4	1.4	138.6	6.8	3343	249	1.82	0.48	17.49%
DD003	DD003-194	171	172.3	9969.4	17.3	4.2	49.6	95.1	1.9	6936	0.3	2374	865	241.7	6.8	<0.5	51.1	2.5	1207	410	2.41	0.17	15.67%
DD003	DD003-195	172.3	173	1694.7	56.3	20.9	27.9	78.2	9.3	898.5	1.8	638.9	182	98.6	10.4	2.9	238.3	15.9	769	50	0.47	0.11	20.51%
DD003	DD003-196	173	173.42	1658.7	42.8	14.5	23.4	61.1	6.8	853.7	1	623.3	179	87.7	8.1	1.7	174.9	9.3	787	58	0.44	0.11	21.29%
DD003	DD003-197	173.42	174	8130.7	20.7	6.6	56.3	106	2.6	5241	0.4	2273	760	255.5	7.7	0.8	60.8	3.9	1144	130	0.98	0.16	17.87%
DD003	DD003-198	174	175	5215	88.3	28.4	73.4	182	13.2	2836	1.9	1948	566	273.4	19.8	3.4	319	17	2719	5	1.36	0.39	21.61%
DD003	DD003-199	174	175	5086.5	89.1	28.9	74	180	13.2	2761	1.9	1913	554	274.9	20.6	3.4	325.3	16.9	3012	7	1.33	0.43	21.65%
DD003	DD003-200	175	176	5134.6	57.7	18.4	56.4	133	8.2	3001	1.1	1785	532	232.7	13.9	1.9	199.3	10.1	2346	11	1.31	0.34	20.63%
DD003	DD003-201	176	177	3368.6	81.9	25.3	60.9	150	11.9	1645	1.6	1428	394	222.1	18	2.7	278.9	13.4	2911	<1	0.90	0.42	23.55%
DD003	DD003-202	177	178	3489	76.7	25.3	64.2	151	11.5	1755													

For personal use only

Hole_ID	Sample No	Depth From (m)	Depth To (m)	Ce ppm	Dy ppm	Er ppm	Eu ppm	Gd ppm	Ho ppm	La ppm	Lu ppm	Nd ppm	Pr ppm	Sm ppm	Tb ppm	Tm ppm	Y ppm	Yb ppm	Nb ppm	Mo ppm	TREO%	Nb2O5%	NdPr%
DD003	DD003-227	200	201	513.4	8.9	3.3	5.3	12.7	1.4	329.8	0.2	146.1	48.3	18.1	1.8	<0.5	37.4	1.9	462	10	0.13	0.07	17.14%
DD003	DD003-228	201	202	361.2	8.9	3.7	5	12.5	1.5	207.3	0.3	128.5	38.2	19.1	1.7	<0.5	39	2.2	376	3	0.10	0.05	19.99%
DD003	DD003-229	202	203	366.4	6.4	2.1	3.8	8.9	0.9	224.1	0.2	114.3	36.2	14.5	1.2	<0.5	25.6	1.6	277	9	0.09	0.04	18.58%
DD003	DD003-231	203	204	1143.5	10.3	3.8	7.6	18.6	1.7	764.1	0.4	302.9	105	33.4	2.2	0.6	43.1	3.4	420	66	0.29	0.06	16.64%
DD003	DD003-232	204	205	527.7	9.2	3.7	5.6	13.4	1.5	318.9	0.3	168.9	53	22.6	1.7	<0.5	42.1	2.5	408	37	0.14	0.06	18.85%
DD003	DD003-233	205	206	676	10.5	4.2	8.2	17.6	1.9	424.4	0.4	226.6	70.2	30.6	2.3	<0.5	47.6	3.1	363	28	0.18	0.05	19.39%
DD003	DD003-234	206	207	419.5	14.6	6.3	7.1	19.6	2.7	232.7	0.5	155.1	45.1	24.4	2.5	0.7	69.3	4.3	373	62	0.12	0.05	19.79%
DD003	DD003-235	207	208	550.5	8.3	3	6.7	14.4	1.2	331.1	0.3	180.5	56.2	25.6	1.6	<0.5	33.7	2.2	328	11	0.14	0.05	19.39%
DD003	DD003-236	208	209	751.6	12.7	5.8	7.6	20.4	2.4	485.6	0.5	228.4	72.5	28.3	2.5	0.8	60.1	4.3	325	27	0.20	0.05	17.78%
DD003	DD003-237	209	210	571.4	8.9	4	5.7	13.3	1.8	361.9	0.4	168.3	56.4	21.6	1.7	0.6	45.3	3.3	339	15	0.15	0.05	17.68%
DD003	DD003-238	210	211	395.7	7.4	2.6	4.6	9.9	1.3	256.2	0.3	124.4	40.1	17	1.4	<0.5	31.3	2.2	292	17	0.10	0.04	18.30%
DD003	DD003-239	210	211	407.7	7.2	2.7	4.4	11	1.1	259.6	0.3	121.1	39.7	16.3	1.4	<0.5	31.2	2.2	358	23	0.11	0.05	17.66%
DD003	DD003-240	211	212	392.5	6.2	2	4	10	1	245.6	0.2	121.5	38.8	16.2	1.2	<0.5	24.2	1.5	327	27	0.10	0.05	18.45%
DD003	DD003-241	212	213	502.9	5	2	4.2	10.3	0.8	304.5	0.2	150.5	49.9	18.9	1.2	<0.5	21.7	1.5	320	26	0.13	0.05	18.59%
DD003	DD003-242	213	214	329.9	4.8	2	4.3	10.3	0.8	189.9	0.2	113.6	34.3	17.6	1.2	<0.5	22.2	1.3	484	8	0.09	0.07	20.10%
DD003	DD003-243	214	215	400.7	8.1	3.1	5.5	14.5	1.4	230.7	0.2	137.2	43.2	20.6	1.7	<0.5	33.2	1.7	337	8	0.11	0.05	19.90%
DD003	DD003-244	215	216	373.8	7.2	3.3	4.6	11.3	1.2	228.9	0.3	125.9	37.9	18.6	1.5	<0.5	32.7	2.3	357	15	0.10	0.05	19.18%
DD003	DD003-245	216	217.3	345.9	16.3	6.2	5.7	16	2.9	200.5	0.4	126.6	36.5	18.6	2.6	0.6	74	2.9	404	15	0.10	0.06	18.89%
DD003	DD003-246	217.3	218.3	518.5	13.7	5.2	6.5	17.9	2.3	303.8	0.3	178	53.3	23.6	2.5	0.6	60	2.4	543	21	0.14	0.08	19.34%
DD003	DD003-247	218.3	219.2	399.4	14.6	5.1	4.8	14.5	2.4	246.3	0.3	119.2	38.5	15.1	2.4	0.5	61.8	2.3	1382	82	0.11	0.20	16.88%
DD003	DD003-248	219.2	220.3	374.7	18.4	7.5	6.6	21.3	3.1	214.7	0.6	137.1	38.9	21.8	3.4	0.8	84.4	4.8	1294	66	0.11	0.19	18.59%
DD003	DD003-249	220.3	221	392.8	4.3	2	4.4	10.2	0.7	231.4	0.3	130.4	40.5	18.8	1.1	<0.5	20	2.5	448	26	0.10	0.06	19.80%
DD003	DD003-250	221	222	583.9	5.1	2.4	5.1	11.4	0.8	388.7	0.2	165.2	54.9	21	1.2	<0.5	21.1	2	321	12	0.15	0.05	17.36%
DD003	DD003-251	222	223	296.6	7.4	3.1	4.2	10.3	1.2	166.6	0.3	104.8	30.3	15.2	1.3	<0.5	34.4	2.2	382	12	0.08	0.05	19.81%
DD003	DD003-252	222	223	303.4	6.7	3.4	4.7	11.3	1.4	174.7	0.3	104.9	32.5	16.4	1.3	<0.5	34.3	2.2	401	11	0.08	0.06	19.58%
DD003	DD003-253	223	223.9	386.9	7.6	4.1	4.2	10.1	1.6	221	0.3	134.3	41	15.3	1.4	<0.5	41.9	2.9	497	28	0.10	0.07	19.97%
DD003	DD003-254	223.9	225	516.6	10	3.9	4.8	14.1	1.7	367.1	0.3	124.6	45.2	15.5	1.9	<0.5	44.7	2.3	3098	152	0.14	0.44	14.65%
DD003	DD003-255	225	226	499.8	16.2	6.6	6.1	18.1	2.8	309.4	0.3	156.2	50.4	20.5	2.9	0.6	71.2	2.8	1113	32	0.14	0.16	17.63%
DD003	DD003-256	226	227	395.4	7.2	2.8	4.5	10.5	1.4	224.1	0.2	141.7	42.2	17.3	1.3	<0.5	32.8	1.6	328	11	0.10	0.05	20.72%
DD003	DD003-257	227	228	582.1	20.8	10	10.2	26.5	4.1	298.2	0.8	242.4	67.4	39.7	3.4	1.2	99.1	6.4	554	9	0.17	0.08	21.77%
DD003	DD003-258	228	229	969.6	63	25.3	27.1	76.5	11.3	481.7	1.8	444.8	115	85.4	11.4	3	269.1	14.4	899	55	0.31	0.13	21.34%
DD003	DD003-259	229	230	1302	13.4	5.5	14.1	29.6	2.1	703.4	0.5	514.8	147	63.7	3.2	0.7	56.9	4.3	1476	88	0.34	0.21	23.03%
DD003	DD003-260	230	230.8	1237.2	36.2	14.4	17.4	47.7	6.3	702.4	0.9	454.7	133	66	6.8	1.7	145.5	7.6	2139	16	0.34	0.31	20.30%
DD003	DD003-262	230.8	232	1651.8	43.3	17.9	27.4	67	7.9	752.6	1.2	757	203	111.3	8.5	2	195	9.6	819	31	0.45	0.12	24.75%
DD003	DD003-263	232	233	1596.1	37	13.1	26.8	66.5	6.2	697.7	0.9	729.8	196	105	8.3	1.5	145.7	7.1	1040	2	0.43	0.15	25.32%
DD003	DD003-264	233	234	2154.3	32	11.4	34.2	73.6	5.3	903.3	0.7	1024	271	139.6	8	1.2	120.1	5.4	1444	3	0.56	0.21	26.97%
DD003	DD003-265	234	235	2696.7	61.4	17.4	63.2	148	8.8	1140	1.1	1346	342	234.8	15.6	2	194	8.8	2470	18	0.74	0.35	26.77%
DD003	DD003-266	234	235	2560.7	61.4	17	61.4	141	8.6	1088	1	1284	325	228.1	15	1.8	192.5	8	2607	1	0.70	0.37	26.74%
DD003	DD003-267	235	236	3012.8	57.7	17.9	50.9	124	8.8	1392	1.1	1289	358	186.3	13.2	1.9	198	9	2653	3	0.79	0.38	24.40%
DD003	DD003-268	236	237	1442	26.3	10.6	19.5	46.6	4.6	691.6	0.7	586	165	76.8	5.3	1.2	108.2	5.4	1779	14	0.37	0.25	23.43%
DD003	DD003-269	237	238	1751.8	55	20.3	33.1	86.3	9.7	757.5	1.3	820	217	120.4	10.4	2.6	225.8	10.7	1274	13	0.48	0.18	25.00%
DD003	DD003-271	238	239	1564.1	42.2	16.4	27.1	69	7.1	688.9	1	704	188	103.4	8.4	1.8	178.3	8.5	97	<1	0.42	0.01	24.57%
DD003	DD003-272	240	240	1459.1	38	15	25.3	62.5	6.9	649.4	0.9	664.6	180	98.7	7.6	1.7	159.4	7.6	67	3	0.40	0.01	24.86%
DD003	DD003-273	240	241	1649	46.7	17.8	29.8	72.5	7.9	757.1	1.1	733.8	198	114.6	9.1	2	189.5	9.3	60	8	0.45	0.01	24.13%
DD003	DD003-274	241	242	1391.8	44.9	16.8	27.8	69.4	8.1	628.9	1.2	616.9	165	101.7	8.9	2	185.1	9.8	76	5	0.38	0.01	23.69%
DD003	DD003-275	242	243	1502.1	46.2	18.9	30	75.2	8.3	691.6	1.3	672.6	176	109.1	9.7	2.3	195.1	10.9	82	3	0.42	0.01	23.77%
DD003	DD003-276	243	244	1492.7	61	24	38.7	97.3	10.3	663.8	1.5	715.2	185	128.5	12.4	2.7	238.4	12.4	205	1	0.43	0.03	24.27%
DD003	DD003-277	244	245	1468.7	46.9	16.3	30	77.6	8.8	650.5	1	676.3	180	113.9	9.7	1.8	178.3	8.2	161	2	0.41	0.02	24.56%
DD003	DD003-278	245	246	1438.5	49.2	18.5	31.1	78.2	8.2	645.4	1.2	678.9	176	113.5	10	2.1	197.6	9.8	155	5	0.41	0.02	24.56%
DD003	DD003-279	245	246	1388.8	49	17.6	29.8	78.3	8.2	632.3	1.2	672.5	173	110.7	10.1	2.1	199.2	9.5	142	4	0.40	0.02	24.85%
DD003	DD003-280	246	247	1521.4	47.3	16.7	31.1	80.8	8.2	690.6	1.1	716.2	187	117.4	10	2	186.4	8.6	51	2	0.43	0.01	24.77%
DD003	DD003-281	247	248	1685.9	51	19.1	35.9	90.9	8.9	747.1	1.2	791.5	208	131	10.8	2.1	198.8	10	350	5	0.47	0.05	24.89%
DD003	DD003-282	248	249	2424.6	45	15.1	37.4	84.7	7.2	1126	0.9	1087	292	153.4	10	1.7	170.3	7.4	635	4	0.64	0.09	25.12%
DD003	DD003-283	249	250	2510.2	47.4	17	41.4	97.4	7.6	1168	1	1126	300	164.7	10.4	1.9	180.5	8.1	1340	2	0.67	0.19	25.00%
DD003	DD003-284	250	251	3146.2	45.9	15.9	46.3	104	7.7	1567	1.1	1355	369	191.3	10.8	1.9	178.7	8.7	915	7	0.83	0.13	24.35%
DD003	DD003-285	251	252	3918	28.5	9.8	41.3	81.7	4.3	2410													

For personal use only

Hole_ID	Sample No	Depth From (m)	Depth To (m)	Ce ppm	Dy ppm	Er ppm	Eu ppm	Gd ppm	Ho ppm	La ppm	Lu ppm	Nd ppm	Pr ppm	Sm ppm	Tb ppm	Tm ppm	Y ppm	Yb ppm	Nb ppm	Mo ppm	TREO%	Nb2O5%	NdPr%
DD003	DD003-311	273	274	2768.7	45.3	15.6	38.9	89.9	7.3	1368	1	1128	308	160.9	10	1.9	177.1	8.1	448	2	0.72	0.06	23.32%
DD003	DD003-312	274	275	3187.5	49	17.8	41.4	95.4	8	1782	1.1	1230	345	166.3	11.3	2	199.4	9.3	1507	10	0.84	0.22	21.95%
DD003	DD003-313	275	276	4135.2	34.8	11.9	42.1	89.6	5.3	2572	0.8	1470	424	177	9.1	1.3	134.1	6.3	430	21	1.07	0.06	20.70%
DD003	DD003-314	276	277	2859.5	37.4	13.1	35.8	79.2	6.1	1652	0.9	1085	300	149.1	8.5	1.6	152.3	7	499	21	0.75	0.07	21.60%
DD003	DD003-315	277	278	2399.1	38.7	13.6	36.1	80.7	6.2	1182	0.8	987.3	268	143.1	8.8	1.5	156.5	6.8	448	3	0.62	0.06	23.45%
DD003	DD003-316	278	279	4235.1	41.7	13	50.4	108	6.2	2615	0.8	1516	446	204.8	10.9	1.4	153.1	6.2	286	4	1.10	0.04	20.77%
DD003	DD003-317	279	280	2567.2	46.6	15.7	42.3	102	7.2	1239	1	1066	289	164.1	11	1.8	181.3	8.2	244	4	0.67	0.03	23.50%
DD003	DD003-318	280	281	2411.4	46	14.3	40.5	92.8	6.8	1142	1	1007	272	148.8	10.3	1.7	174.3	8.2	178	<1	0.63	0.03	23.68%
DD003	DD003-319	280	281	2292.6	43.4	15.1	38.9	93.5	6.8	1091	1	969.2	261	149	10.4	1.7	172.2	7.9	214	2	0.60	0.03	23.76%
DD003	DD003-320	281	282	2726.1	47.2	15.3	44.7	102	7.1	1295	1	1144	311	168.9	11.3	1.7	180.6	8	164	7	0.71	0.02	23.89%
DD003	DD003-321	282	283	2690.6	47.5	15.2	44.1	98	7.3	1277	1	1125	303	163	10.8	1.7	183	8	332	<1	0.70	0.05	23.78%
DD003	DD003-322	283	284	2520	48.9	16.1	40.8	96.8	7.4	1183	1.1	1069	288	161	11.1	1.8	190.3	9.3	1361	<1	0.66	0.19	23.92%
DD003	DD003-323	284	285	2289.5	54.8	20.9	39	97.6	9.1	1048	1.7	946.4	256	144.9	11.5	2.6	229.3	13.7	2602	1	0.61	0.37	23.16%
DD003	DD003-324	285	286	2201.1	63.9	24.6	40.9	102	10.5	1021	2	934.5	250	144.4	12.7	3	272.2	16.6	1779	<1	0.60	0.25	23.09%
DD003	DD003-325	286	287	2507.5	43.5	15	37.5	87	6.8	1166	1.1	1030	285	149.1	10	1.8	176.4	9	3598	<1	0.65	0.51	23.68%
DD003	DD003-326	287	288	2720.4	64.2	24.1	46	111	10.3	1268	1.8	1135	300	168.8	13.6	2.8	264.1	14.7	2028	<1	0.72	0.29	23.32%
DD003	DD003-327	288	289	3074.4	84.3	32.2	55.1	138	13.7	1440	2.5	1305	354	200.2	17.1	4	351.2	20.5	1213	<1	0.83	0.17	23.26%
DD003	DD003-328	289	290	2806.3	55.8	20.8	43	106	8.8	1309	1.5	1160	321	165.9	12.5	2.6	230.2	12.3	1795	<1	0.73	0.26	23.55%
DD003	DD003-329	290	291	2221.3	65.8	24.3	40.1	105	10.5	1023	2	943.7	253	143.7	13	3.2	268.9	16.4	2247	<1	0.60	0.32	23.17%
DD003	DD003-330	291	292	1908.4	58.1	23.8	36.4	92.9	9.5	873.3	2.1	815.3	219	128.9	11.6	3.2	247.5	16.8	3955	<1	0.52	0.57	23.12%
DD003	DD003-331	292	293	2420.9	53.7	21.6	40.1	96.4	9	1142	1.8	1007	277	151.1	11.7	2.8	227.9	14.8	1756	<1	0.64	0.25	23.33%
DD003	DD003-332	292	293	2351.1	58.4	22.5	40.2	98.9	9.7	1098	2	966.2	267	149	12	2.9	241.6	16	2161	14	0.63	0.31	22.99%
DD003	DD003-333	293	294	2427.8	73.3	28.5	45.4	117	12	1136	2.7	1027	276	162.4	14.8	3.9	307.4	22.4	5099	1	0.66	0.73	22.89%
DD003	DD003-334	294	295	2529.3	49.6	18.5	40.1	96.8	7.9	1192	1.7	1042	286	154.1	10.7	2.6	204.6	14.3	1542	<1	0.66	0.22	23.39%
DD003	DD003-335	295	296	2427.6	51.9	19.8	42.1	99.8	8.5	1156	1.8	1025	271	150.8	11.7	2.5	214.1	14.5	428	6	0.64	0.06	23.45%
DD003	DD003-336	296	297	2685.4	56.3	20.1	47.6	111	8.7	1323	1.9	1128	303	170.7	12.2	2.8	226.8	15.3	618	5	0.72	0.09	23.30%
DD003	DD003-337	297	298	2194.9	52.3	21.6	39.7	97.2	8.4	1017	1.9	925.5	252	145.7	11.4	2.9	224.1	15.5	495	<1	0.59	0.07	23.37%
DD003	DD003-338	298	299	2614.2	39.1	13.1	42.2	93.8	6	1234	1.1	1134	302	166.8	9.5	1.6	160.5	8.6	236	<1	0.68	0.03	24.53%
DD003	DD003-339	299	300	2445.4	44.7	16.1	40	92.5	6.9	1118	1.6	1012	275	150	10	2.1	179.3	12.7	2140	2	0.63	0.31	23.69%
DD003	DD003-340	300	301	2732.6	42.6	16.8	42.9	97	6.5	1356	1.7	1084	296	162.1	10	2.3	175.8	13.5	2570	1	0.71	0.37	22.74%
DD003	DD003-342	301	302	2556	67	36.2	43.9	107	12.7	1200	3.4	1078	291	162.7	12.6	5	362.4	27.9	1443	1	0.70	0.21	22.79%
DD003	DD003-343	302	303	2529.7	80.8	43.3	45.1	113	15.9	1170	3.9	1059	286	166.7	14.2	6.2	431.8	31.9	2136	1	0.71	0.31	22.26%
DD003	DD003-344	303	304	2843.9	88.5	42.7	46.3	120	16.8	1373	3.2	1163	319	175.7	15.4	5.4	468.7	25.9	1150	1	0.79	0.16	21.93%
DD003	DD003-345	304	305	3132.5	52.2	21	40.1	97.1	8.6	1931	1.7	1082	318	154.3	10.8	2.6	226.7	14	410	<1	0.83	0.06	19.64%
DD003	DD003-346	304	305	3334.1	58.7	23.1	44.3	103	9.6	2020	2	1164	340	166.1	11.6	3.1	259.4	16.6	417	1	0.89	0.06	19.81%
DD003	DD003-347	305	306	2603.1	59.7	23.5	44.4	104	10.2	1220	2	1092	294	165.4	12.2	2.9	264.6	16.7	371	1	0.69	0.05	23.30%
DD003	DD003-348	306	307	2647.2	60.3	22.1	44.3	107	9.4	1270	1.7	1105	299	165.3	13	2.5	245.2	13.9	395	<1	0.70	0.06	23.27%
DD003	DD003-349	307	308	2437.3	68.5	23.5	44	115	10.9	1131	1.8	1037	277	161.5	14.2	2.7	265.2	15	256	2	0.66	0.04	23.30%
DD003	DD003-351	308	309	2449.8	66.6	25.6	44.4	109	10.3	1151	2.2	1042	280	159.8	13.7	3.1	275.4	18.4	707	2	0.66	0.10	23.26%
DD003	DD003-352	309	310	1780.5	82.3	34.8	36.7	104	14.4	847.2	3.3	737.7	199	121.7	14.8	4.8	375.1	26.7	167	2	0.52	0.02	21.19%
DD003	DD003-353	310	311	1542.6	152.2	64.7	44.3	143	27.1	698.6	4.9	893.1	179	130.3	25.4	8	710.3	40.2	266	5	0.53	0.04	19.28%
DD003	DD003-354	311	312	1843.7	94.9	38.4	43.5	121	16.5	831.9	2.5	852.5	219	150	17.5	4.5	428	20.7	181	3	0.55	0.03	22.67%
DD003	DD003-355	312	313	2561.5	57.8	19.6	40.5	100	9.4	1248	1.2	1042	294	154.9	12	2.3	231.2	9.7	848	17	0.68	0.12	22.97%
DD003	DD003-356	313	314	1881.2	29.7	13.9	19	47.4	5.3	1142	0.8	571	180	72.6	5.9	1.5	142.5	6.9	718	76	0.48	0.10	18.13%
DD003	DD003-357	314	315	829.8	8.8	5.8	7.2	15.6	1.8	563	0.6	232.5	76.8	29	1.6	1	52.8	4.9	435	85	0.21	0.06	16.81%
DD003	DD003-358	315	316	825.9	7.1	4.2	5.7	14.2	1.4	568.3	0.5	221	74.3	25	1.5	0.8	33.9	3.9	479	112	0.21	0.07	16.45%
DD003	DD003-359	315	316	791.2	6.8	3.9	6	13.5	1.2	544.4	0.5	214.5	71.3	24.8	1.6	0.6	3.4	3.8	474	117	0.20	0.07	16.56%
DD003	DD003-360	316	317	912.3	9.2	4	7.3	18.8	1.6	606.8	0.5	243.3	83	28.8	2.1	0.7	39.6	4.2	508	117	0.23	0.07	16.56%
DD003	DD003-361	317	318	900.8	8.2	3.9	7.9	17.3	1.3	601.2	0.3	246.1	82	29.1	1.8	0.6	34.1	2.8	553	112	0.23	0.08	16.87%
DD003	DD003-362	318	319	997.5	10.5	4.9	8.8	20.7	1.8	652.9	0.3	290.7	92.3	37.3	2.1	0.6	47.7	2.7	552	205	0.25	0.08	15.75%
DD003	DD003-363	319	320	933.8	17.4	11	8.9	23.1	4	613.2	0.6	266.9	85.2	35.2	2.8	1.2	111.1	4.9	633	171	0.25	0.09	16.50%
DD003	DD003-364	320	321	1663.4	25.1	11.4	9.7	24.4	5.1	1157	0.4	394.3	138	38.4	3.8	1.1	133.8	3.6	476	149	0.42	0.07	14.66%
DD003	DD003-365	321	322	2890.8	36	12.5	14.2	40.6	6.2	2249	0.5	623.9	233	60.9	5.7	1.1	157.5	3.8	862	109	0.74	0.12	13.45%
DD003	DD003-366	322	323	988.9	54.8	16.2	14.5	47.2	6.1	643.6	0.6	292.5	91.9	46.5	9	1.3	227.6	4.6	400	69	0.29	0.06	15.55%
DD003	DD003-367	323	324.2	2939.2	75.5	21.1	25.9	79.2	12.1	2190	0.6	734.1	251	92.7	13.1	1.4	291.3	5.1	903	179	0.79	0.13	14.55%
DD003	DD003-368	324.2	3																				

Hole_ID	Sample No	Depth_From (m)	Depth_To (m)	Ce ppm	Dy ppm	Er ppm	Eu ppm	Gd ppm	Ho ppm	La ppm	Lu ppm	Nd ppm	Pr ppm	Sm ppm	Tb ppm	Tm ppm	Y ppm	Yb ppm	Nb ppm	Mo ppm	TREO%	Nb2O5%	NdPr%
DD003	DD003-393	348	349	3222.1	63.3	21.9	50.2	118	10	1701	1.3	1281	353	197.6	13.7	2.3	257.4	10.7	39	4	0.86	0.01	22.27%
DD003	DD003-394	349	350.42	4974.9	73.6	24.8	58.6	141	11.3	2916	1.7	1764	518	237.6	15.4	2.8	290.3	13.6	4669	9	1.29	0.67	20.57%

Drill Collar DD006B (Dominant Mineralisation highlighted REE Nb)

Hole_ID	Sample No	Depth_From (m)	Depth_To (m)	Ce ppm	Dy ppm	Er ppm	Eu ppm	Gd ppm	Ho ppm	La ppm	Lu ppm	Nd ppm	Pr ppm	Sm ppm	Tb ppm	Tm ppm	Y ppm	Yb ppm	Nb ppm	Mo ppm	TREO%	Nb2O5%	NdPr%
DD006B	DD006B-001	0	1	1160	23.9	9.4	13.8	32.4	4.3	713.8	0.6	387.6	118.1	53.1	4.1	1.1	114	4.9	522	26	0.31	0.07	16.31%
DD006B	DD006B-002	1	2	1138	21.3	9	12.4	30.4	3.8	737.8	0.6	347.8	110.6	47	3.9	1.1	103	5.5	638	28	0.3	0.09	15.18%
DD006B	DD006B-003	2	3	1409	26.9	11.7	17.8	43.2	4.8	845.3	0.8	465.6	143.1	65	5.1	1.4	123	6.9	638	31	0.37	0.09	16.36%
DD006B	DD006B-004	3	4	1403	37.9	15.1	22.6	56.1	6.8	803.4	1.1	512.1	148.3	77.8	7.2	1.9	171	9.1	799	26	0.38	0.11	17.18%
DD006B	DD006B-005	4	5	1780	52.8	21.2	29.4	72.4	9.2	936.3	1.3	674.4	192.2	102.2	9.3	2.6	232	11.4	866	14	0.48	0.12	17.87%
DD006B	DD006B-006	5	6	669.8	22.6	8.5	13	32.4	3.9	338.6	0.5	272.2	75.6	47.1	4.2	1.1	98.6	4.7	793	14	0.19	0.11	18.58%
DD006B	DD006B-007	6	7	1873	35.7	11.5	24.5	59.7	5.9	1147.4	0.8	657.3	195	92.5	7.2	1.3	141	6.6	900	44	0.5	0.13	17.06%
DD006B	DD006B-008	7	8	1432	32.7	11.7	25.1	60.7	5.2	753.5	0.8	585.9	163.8	89.5	6.9	1.4	133	7.1	1360	17	0.39	0.19	19.31%
DD006B	DD006B-009	8	9	2313	41.8	14	36.1	85.9	6.5	1221.3	1	909.4	253.7	134.9	9.4	1.6	159	9	1531	43	0.61	0.22	19.09%
DD006B	DD006B-010	9	10	1577	42.4	15.2	32.2	75	6.9	740.7	1.2	700	187.4	115.5	9	2.1	177	10.6	411	39	0.43	0.06	20.48%
DD006B	DD006B-011	10	11	1585	40.2	15.3	26.4	66.5	6.7	800.1	1.3	619.7	174	98.5	8.2	2	175	10.9	1712	21	0.43	0.24	18.63%
DD006B	DD006B-012	10	11	1546	36.6	14.3	25.2	62.4	5.9	789.2	1.1	602.1	168.9	93	7.6	1.8	159	9.2	1585	23	0.41	0.23	18.65%
DD006B	DD006B-013	11	12	502	10.6	4.2	8.9	21.4	1.8	357.4	0.4	213.7	60.7	30.4	2.1	0.6	48.3	3.8	512	30	0.15	0.07	18.83%
DD006B	DD006B-014	12	13	1243	16.1	6.3	14	33	2.6	780.4	0.6	410	124.3	55	3.6	0.8	67.8	4.9	573	34	0.32	0.08	16.50%
DD006B	DD006B-015	13	14	488.8	10.4	5	9	20.1	1.7	263.2	0.6	210.2	57.3	34.1	2.2	0.8	50	4.9	582	31	0.14	0.08	19.68%
DD006B	DD006B-016	14	15	485.2	8.4	3.4	6.9	16	1.4	274.7	0.4	176.3	52.1	26	1.8	0.5	37.6	3.3	480	52	0.13	0.07	17.80%
DD006B	DD006B-017	15	16	736.5	11.1	4.7	9	19.6	1.8	439.9	0.4	249	76.1	33.3	2.2	0.7	52.4	3.7	629	43	0.19	0.09	16.90%
DD006B	DD006B-018	16	17	1576	15.4	7.5	13	28.7	2.8	1048	0.6	451.2	147.7	53.3	3	1	76.8	5.2	547	35	0.4	0.08	14.89%
DD006B	DD006B-019	17	17.8	728.2	20.5	10.3	9.7	27.2	4.1	444.6	0.8	241.9	74	34.4	3.6	1.4	108	6.9	639	39	0.2	0.09	15.67%
DD006B	DD006B-020	17.8	19	2711	52.3	21.2	34	79.8	9.4	1647.2	1.6	917	273.9	125.2	9.7	2.6	240	13.5	1378	106	0.72	0.20	16.53%
DD006B	DD006B-022	19	20	1434	34.2	13.6	21.2	50.3	6.2	700.1	0.9	544.4	158.2	80	6.6	1.7	163	7.5	833	37	0.38	0.12	18.57%
DD006B	DD006B-023	20	21	537.4	15.8	4.9	7.7	19	2.5	304.7	0.3	178.1	54.8	25	2.7	0.6	63.6	3	772	6	0.14	0.11	16.25%
DD006B	DD006B-024	21	22	2624	35.9	12.7	25.7	63	5.8	1790.3	0.9	752.3	246.9	100.1	7.5	1.6	150	7.9	1352	45	0.68	0.19	14.63%
DD006B	DD006B-025	22	23	10609	70.8	29.3	71.2	180	15.4	8471.9	1.5	2347	866.7	260.5	23.5	3	369	13.1	3486	58	2.74	0.50	11.73%
DD006B	DD006B-026	22	23	11089	72.5	18.9	65.7	153	10.1	9003	1	2439	906	262.2	17.3	1.9	240	8.8	3164	59	2.85	0.45	11.75%
DD006B	DD006B-027	23	24	6270	21.1	4.3	35.2	73.3	2.3	4659.8	0.2	1561	550.7	160	6.7	<0.5	53.9	2	1691	53	1.57	0.24	13.45%
DD006B	DD006B-028	24	25	7541	28.1	5.4	44.8	95	3.1	5639.8	0.3	1809	662.5	184.4	9.1	<0.5	68.6	2.3	898	112	1.88	0.13	13.11%
DD006B	DD006B-029	25	26	15044	37.5	6.7	65.7	139	4.1	11674	0.3	3032	1203	280.2	12.6	0.5	83.3	2.4	808	256	3.7	0.12	11.45%
DD006B	DD006B-031	26	27	13708	38.5	7	62.9	138	4.3	11145	0.3	2800	1090	267	12.6	0.6	89.9	2.8	766	93	3.44	0.11	11.31%
DD006B	DD006B-032	27	28	13252	33.3	5.9	60	124	3.5	10986	0.3	2747	1059	262.1	10.8	0.6	76.5	2.3	1314	83	3.35	0.19	11.35%
DD006B	DD006B-033	28	29	11887	26.1	4.4	55.1	107	2.8	9676.4	0.2	2548	963.2	240.9	9.4	<0.5	57.4	1.4	1750	113	3	0.25	11.72%
DD006B	DD006B-034	29	30	11842	25.9	4.6	57.2	105	2.6	10158	0.2	2367	921.2	224.2	9.2	<0.5	57.2	1.5	1925	28	3.02	0.28	10.89%
DD006B	DD006B-035	30	31	13627	34.3	7	58.2	119	3.9	11654	0.3	2643	1055	243.2	10.9	0.6	87	3	1911	30	3.46	0.27	10.68%
DD006B	DD006B-036	31	32	7104	22.9	3.6	47.1	95.3	2.3	5159	0.2	1791	628	192.2	7.9	<0.5	47.4	1.3	927	85	1.77	0.13	13.68%
DD006B	DD006B-037	32	33	2803	16	3.7	23.4	50.1	1.9	1923.4	0.2	779.7	257.3	93.6	4.6	<0.5	46.8	1.9	604	85	0.7	0.09	14.74%
DD006B	DD006B-038	33	34	2023	9.4	2.7	12.4	27	1.3	1487.7	0.2	484.3	169	54.4	2.8	<0.5	31.8	1.8	415	24	0.5	0.06	12.95%
DD006B	DD006B-039	33	34	2568	10.6	2.8	18.6	38.3	1.4	1717	0.2	721.5	236.9	80.5	3.4	<0.5	34.2	1.7	385	46	0.64	0.06	15.06%
DD006B	DD006B-040	34	35	153.2	5.3	2.2	2.5	7.2	0.9	93.1	0.2	54.3	16	8.6	0.9	<0.5	21.1	1.6	47	3	0.04	0.01	16.30%
DD006B	DD006B-041	35	36	993.8	7.9	3	7.4	17.3	1.2	756.4	0.3	239.8	83.7	29	1.8	<0.5	30.5	2.3	178	12	0.25	0.03	12.69%
DD006B	DD006B-042	36	37	2374	15.2	4.2	14.8	34.8	2.1	1905.3	0.3	540.4	192.8	61	3.6	<0.5	48.9	2.2	413	17	0.61	0.06	12.04%
DD006B	DD006B-043	37	38	289	11.7	3.8	3.9	12.3	1.9	191.1	0.2	88.5	28.1	13.8	2	<0.5	50.4	2	248	10	0.08	0.04	14.18%
DD006B	DD006B-044	38	39	861.9	44	10.7	10.8	37.3	6.6	569.2	0.3	259.6	80.9	37.5	7.4	0.9	161	3	576	53	0.25	0.08	13.83%
DD006B	DD006B-045	39	40	1872	34.6	10.5	17.6	43.1	5.2	1249.8	0.6	510.2	169.8	67.1	6.2	1.2	133	5.2	1134	47	0.48	0.16	14.04%
DD006B	DD006B-046	40	41	431.3	30.1	11.4	8.9	27.4	5.6	259.2	0.7	153.1	44.8	27.5	4.5	1.2	141	6.1	300	13	0.14	0.04	14.53%
DD006B	DD006B-047	41	42	371.7	16.6	7	5.7	16.2	2.9	216.3	0.5	129.2	58.5	18.9	2.4	0.8	80	3.9	333	5	0.11	0.05	15.64%
DD006B	DD006B-048	42	43	896.1	68.6	27.9	19.3	57.1	12.6	435.9	1.6	365.5	101.1	61.2	10.1	3	324	13.9	661	5	0.28	0.09	16.47%
DD006B	DD006B-049	43	44	4068	44.6	14.4	38.1	80.1	7.2	2479.5	0.9	1284	400.1	156.3	9.1	1.6	184	7.6	1502	46	1.03	0.21	16.37%
DD006B	DD006B-050	44	45	2782	34.9	12.6	35.3	74.7	5.5	1395.7	1.1	1039	302.5	141.3	7.9	1.7	140	9.5	1463	5	0.7	0.21	19.13%
DD006B	DD006B-051	45	46	1321	17.5	6.8	13.4	30.5	2.9	751.6	0.5	429	132.1	55.8	3.5	0.8	81.1	4.4	922	35	0.33	0.13	16.78%
DD006B	DD006B-052	45	46	2772	27.1	9	26.8	58.1	4.2	1731.4	0.7	830.2	261.5	106.3	6.1	1.2	109	6.2	1020	33	0.7	0.15	15.66%
DD006B	DD006B-053	46	47	98	4.8	2.5	2.1	6.5	0.9	55.5	0.2	38	11.2	7	0.8	<0.5	22.7	2	44	6	0.03	0.01	16.57%
DD006B	DD006B-054	47	48	106.1	4.3	2	2.3	5.8	0.7	60.1	0.2	40.7	11.6	7.3	0.7	<0.5	21.4	1.8	37	15	0.03	0.01	16.77%
DD006B	DD006B-055	48	49	72.2	4.6	2.																	

For personal use only

Hole_ID	Sample No	Depth_From (m)	Depth_To (m)	Ce ppm	Dy ppm	Er ppm	Eu ppm	Gd ppm	Ho ppm	La ppm	Lu ppm	Nd ppm	Pr ppm	Sm ppm	Tb ppm	Tm ppm	Y ppm	Yb ppm	Nb ppm	Mo ppm	TREO%	Nb2O5%	NdPr%
DD006B	DD006B-072	63	64	997.7	28.6	10.1	18.3	44.8	4.5	534	0.7	381.9	110.7	65.8	5.4	1.2	124	6.2	1001	37	0.27	0.14	17.97%
DD006B	DD006B-073	64	65	2979	48.3	15	35.5	82.5	7.3	1964.9	1	949	292.6	130.4	9.5	1.7	188	8.7	1640	63	0.79	0.23	15.77%
DD006B	DD006B-074	65	65.9	6809	20.3	5.3	45.3	87.9	2.5	4982.9	0.5	1794	624.6	194.2	6.9	0.7	61.6	4.1	1667	106	1.71	0.24	14.11%
DD006B	DD006B-075	65.9	67	3374	30.8	8	32	74.2	4.1	2266.2	0.5	977.6	322.7	121.8	8	1	104	4.7	1399	160	0.86	0.20	15.14%
DD006B	DD006B-076	67	68	1204	15	5	13.7	30.1	2.3	692.7	0.5	424.6	125.5	56.2	3	0.7	59	3.9	556	43	0.31	0.08	17.80%
DD006B	DD006B-077	68	69	1255	12.9	4.6	14.9	31.8	2.1	709	0.4	442.4	130.6	57.5	3.3	0.6	53.4	3.6	580	40	0.32	0.08	17.96%
DD006B	DD006B-078	69	70	1506	19.4	7.4	16.4	35.4	3.3	838.8	0.6	519	155	67.3	3.9	1.1	88.5	5.6	819	64	0.38	0.12	17.59%
DD006B	DD006B-079	69	70	1469	19.9	8.1	16.8	36.6	3.5	843	0.8	523.5	154.8	70.4	4.2	1.1	96.5	6.6	761	63	0.38	0.11	17.77%
DD006B	DD006B-080	70	71	1270	19.4	7.3	14.3	32.8	3.3	722.1	0.6	446.1	132.9	58.1	4.1	1.1	86.8	5.1	551	41	0.33	0.08	17.61%
DD006B	DD006B-081	71	71.9	5270	81.3	26.6	60.9	142	13	3014.4	1.4	1788	552.5	237.1	16.9	2.8	306	12.2	3210	216	1.35	0.46	17.32%
DD006B	DD006B-082	71.9	73	5128	44.9	13.5	46.7	99.4	6.6	2929	0.8	1607	515.5	192	10.1	1.5	165	7	1419	338	1.26	0.20	16.82%
DD006B	DD006B-083	73	74	5051	89.2	34.9	61.1	142	15	2824.2	2.1	1786	538	231.3	17.2	4.1	382	18.2	1741	72	1.31	0.25	17.69%
DD006B	DD006B-084	74	75	3926	36.4	12.1	37.7	81	5.5	2603.1	0.8	1237	389.1	154.2	8.3	1.5	142	6.8	1609	19	1.01	0.23	16.06%
DD006B	DD006B-085	75	76.4	2727	70	25.5	43.4	104	11.4	1365.4	1.6	1086	305.3	156.3	13.4	3	295	13.4	2017	42	0.73	0.29	19.05%
DD006B	DD006B-086	76.4	77.6	2090	203	109	48.8	148	44.7	981	5.1	910.7	247.2	154.3	26.2	12.1	1119	44	783	13	0.73	0.11	15.89%
DD006B	DD006B-087	77.6	79	3511	78.6	26.1	58.3	140	12.3	1713	1.6	1456	406.1	213.3	16	3.1	296	13.5	745	85	0.93	0.11	19.98%
DD006B	DD006B-088	79	79.8	2949	129	52.9	60.4	160	23.2	1389.4	2.8	1261	345.9	204.8	22.3	6	562	24.2	842	41	0.85	0.12	18.99%
DD006B	DD006B-089	79.8	80.6	3357	72.3	27.6	54.6	128	11.9	1580.7	2	1425	392	204.3	14.7	3.8	301	17.1	2481	13	0.89	0.36	20.40%
DD006B	DD006B-090	80.6	82	2342	62.7	22.1	41.7	104	10.3	1222.6	1.4	926.9	261.1	144.2	12.4	2.9	250	12.2	1711	67	0.64	0.24	18.69%
DD006B	DD006B-091	82	83	2125	39.6	12.2	27.3	67	6	1215.9	0.9	711.2	215.3	95.9	8.1	1.5	152	7.5	2064	282	0.55	0.30	16.86%
DD006B	DD006B-092	82	83	2170	35.6	10.7	26.2	66.1	5.2	1260.3	0.7	708.5	219.5	94.9	7.6	1.3	133	6.1	1552	246	0.56	0.22	16.68%
DD006B	DD006B-093	83	84	1300	29.5	9.4	22.1	55.8	4.5	740	0.8	439.3	132.4	74.6	6.3	1.1	124	6.5	1375	87	0.35	0.20	16.53%
DD006B	DD006B-094	84	85	1990	39.2	13.1	30.5	71.7	6	1055.2	0.9	737.3	213.3	106.5	7.9	1.6	153	7.5	1730	84	0.52	0.25	18.28%
DD006B	DD006B-095	85	86	2842	39	12	35.2	80.3	5.8	1639	0.8	972	295.1	129.7	8.8	1.4	148	6.7	1445	177	0.73	0.21	17.39%
DD006B	DD006B-096	86	87	1785	33.4	11.5	24.6	57.9	5.1	946.8	0.8	627.9	185.2	89.7	6.7	1.3	135	7	1119	93	0.46	0.16	17.70%
DD006B	DD006B-097	87	88	2187	37.8	13.1	31.4	73.1	5.7	1211	0.8	808	235.1	114.7	8	1.5	152	6.5	1833	71	0.57	0.26	18.21%
DD006B	DD006B-098	88	89	1795	57.2	19.3	28.9	74.4	9.3	922.5	1.1	691.5	198.6	110	10	2.1	237	9.1	1921	95	0.49	0.27	18.18%
DD006B	DD006B-099	89	90	1952	33.2	9.9	21	51.1	5.1	1195.6	0.6	576	184.7	80	5.9	1.1	127	4.8	1061	175	0.5	0.15	15.27%
DD006B	DD006B-100	90	91	5032	78.5	25.4	55.3	131	11.7	3221.5	1.5	1593	495.4	203.8	15.7	3.1	294	12.9	702	65	1.31	0.10	15.94%
DD006B	DD006B-102	91	92	6233	71.9	21.6	53.7	124	10.7	4188.6	1.3	1765	592.7	210.4	14.2	2.5	252	11.1	1616	35	1.59	0.23	14.84%
DD006B	DD006B-103	92	93	2274	27	8.4	22.2	51.7	4.1	1421	0.5	647.3	211.7	83.9	5.6	0.9	107	4	1047	176	0.57	0.15	15.05%
DD006B	DD006B-104	93	94	1278	48.7	15.4	23.9	67	7.7	690.7	0.8	478.4	134	78.1	9.2	1.7	195	7.1	1188	50	0.36	0.17	17.16%
DD006B	DD006B-105	94	95	1760	31.2	9.6	26.6	62.2	4.8	1019.6	0.5	612.9	181.7	93.1	6.8	1.1	127	4.3	1629	541	0.46	0.23	17.19%
DD006B	DD006B-106	94	95	1671	33.6	10.9	25.6	59.2	5.1	959.5	0.6	590.8	172.7	93.9	7	1.1	128	4.8	1595	471	0.44	0.23	17.30%
DD006B	DD006B-107	95	96	1873	34.5	11.1	26.5	63.6	5.6	1078.3	0.7	645.4	191.3	98	7.2	1.3	140	5.6	925	180	0.49	0.13	17.06%
DD006B	DD006B-108	96	97	1411	27	8.4	20.3	47.7	4.1	817.2	0.5	481.3	142.3	75.9	5.5	1	110	4.3	859	103	0.37	0.12	16.84%
DD006B	DD006B-109	97	98	1978	27.6	9.1	23.9	55.7	4.3	1249.5	0.5	607.9	191.2	90	6.1	1	109	4.3	1010	243	0.51	0.14	15.64%
DD006B	DD006B-111	98	99	1348	24.6	8.5	18.9	45.8	3.8	779.2	0.7	449.4	136	63.5	5	1	99.5	5.6	878	67	0.35	0.13	16.69%
DD006B	DD006B-112	99	100	1645	33.1	11	19.4	48	5.5	984.6	0.6	519	162.1	70.7	6.2	1.2	147	5.2	829	98	0.43	0.12	15.86%
DD006B	DD006B-113	100	101	756.3	13.6	3.9	9	23.1	2	476.8	0.3	235.1	73.4	34	2.5	0.5	58.3	2.4	603	57	0.2	0.09	15.55%
DD006B	DD006B-114	101	101.7	956.7	13.6	3.9	11.9	28.6	1.9	577.1	0.3	319.6	98.1	44.7	2.8	0.5	47.7	2.9	659	38	0.25	0.09	16.89%
DD006B	DD006B-115	101.7	102.6	4932	32.5	7.3	50.4	107	3.9	3366.2	0.4	1510	473.1	198.1	9.3	0.9	88.2	3.5	1804	9	1.26	0.26	15.70%
DD006B	DD006B-116	102.6	104	3335	33.8	8.3	26.5	68.8	4.5	2318.8	0.5	911.1	309.7	103.8	7.7	0.8	113	3.9	1164	231	0.85	0.17	14.38%
DD006B	DD006B-117	104	105	4050	43.2	13.8	31	73.1	6.7	3031.2	0.7	1036	361.4	118.3	8.5	1.3	166	5.9	1316	195	1.05	0.19	13.32%
DD006B	DD006B-118	105	106.3	2092	43	14.1	27.7	65.9	6.8	1194.2	0.8	709	214	98.5	8.3	1.5	180	6.7	1526	47	0.55	0.22	16.87%
DD006B	DD006B-119	105	106.3	1655	44	14.1	25.4	63.6	7	890.7	0.7	605.9	174.4	90.7	8.1	1.5	182	6.3	1151	39	0.44	0.16	17.63%
DD006B	DD006B-120	106.3	107.15	3188	26.5	7.6	34.3	73.7	3.6	2007.7	0.7	1031	317.1	140.9	6.8	1	90.5	5.8	1574	56	0.81	0.23	16.60%
DD006B	DD006B-121	107.15	108	2593	31.6	10.4	28.9	64.6	4.8	1472.6	0.7	916.6	274.5	115.8	6.7	1.4	121	6.2	1666	40	0.66	0.24	17.99%
DD006B	DD006B-122	108	109	2874	33.3	13.7	27.2	60.3	5.8	1793.6	0.8	886.4	282.5	108.6	6.6	1.7	155	7	1065	88	0.73	0.15	15.93%
DD006B	DD006B-123	109	110	1713	26.2	11.1	18.9	43.8	4.9	1013.8	0.7	532.5	164	77.2	4.8	1.5	125	6	805	22	0.44	0.12	15.86%
DD006B	DD006B-124	110	111	1557	28.2	10.2	19	48.5	4.5	909.9	0.6	511.6	158.2	72.4	5.8	1.2	118	5.6	1198	206	0.4	0.17	16.54%
DD006B	DD006B-125	111	112	1728	28.3	10.8	22	50.9	4.8	1018.1	0.7	580.3	173.1	84.4	5.9	1.2	124	6	1553	113	0.45	0.22	16.73%
DD006B	DD006B-126	112	113	1711	38.4	15.9	25.3	62.8	7	1040.6	1	561.3	169.6	89.8	7.2	2	179	8.4	963	27	0.46	0.14	15.89%
DD006B	DD006B-127	113	114.2	1386	26.7	10.2	18.7	45.5	4.6	813.7	0.7	465.9	138.8	68.4	5	1.3	118	6.1	1055	21	0.36	0.15	16.57%
DD006B	DD006B-128	114.2	115	3056	54.8	20	43.4	102	8.8	1626.4	1.2	1130	326.1	161.7	11.9	2.3	228	10.8	1163	144	0.8	0.17	18.30%
DD																							

For personal use only

Hole_ID	Sample No	Depth_From (m)	Depth_To (m)	Ce ppm	Dy ppm	Er ppm	Eu ppm	Gd ppm	Ho ppm	La ppm	Lu ppm	Nd ppm	Pr ppm	Sm ppm	Tb ppm	Tm ppm	Y ppm	Yb ppm	Nb ppm	Mo ppm	TREO%	Nb2O5%	NdPr%
DD006B	DD006B-155	138	139	4073	56.7	17.8	51	115	8.1	2302.4	1.2	1451	433.5	198.9	12.7	2.1	215	10.4	1146	53	1.05	0.16	17.97%
DD006B	DD006B-156	139	139.7	3585	58.2	20	48.9	116	9	1803.8	1.4	1392	397.3	197.1	12	2.2	230	11.7	4059	39	0.92	0.58	19.36%
DD006B	DD006B-157	139.7	141	4809	76	25.9	67.9	153	11.9	2554.5	1.4	1831	532.2	255.5	16.6	3	299	12.4	562	6	1.25	0.08	18.93%
DD006B	DD006B-158	141	142	4634	75.9	24.7	61.1	139	11.9	2371.9	1.4	1759	512.1	239.6	15.7	2.8	295	12.5	120	23	1.19	0.02	19.07%
DD006B	DD006B-159	141	142	4748	73.3	23	62.5	138	11.7	2474.3	1.4	1823	527	246.9	15.3	2.8	284	11.7	120	18	1.22	0.02	19.20%
DD006B	DD006B-160	142	143	3654	73.5	23.1	51.1	127	11.1	1899.7	1.3	1342	389	189.2	15.3	2.6	270	11	2643	4	0.95	0.38	18.31%
DD006B	DD006B-161	143	144	7480	47.1	15.1	55.5	118	7	5685	0.9	1851	644.8	218.3	11.5	1.6	171	7.4	1180	100	1.91	0.17	13.06%
DD006B	DD006B-162	144	145	4512	35.4	11.5	39.1	83.7	5.1	2797.5	0.7	1359	438.2	158.3	8.1	1.3	131	6	1207	27	1.12	0.17	16.00%
DD006B	DD006B-163	145	146	4377	81.6	26.1	60.7	144	12.6	2279.5	1.5	1659	479.4	221.7	16.8	3.1	309	12.9	682	13	1.14	0.10	18.83%
DD006B	DD006B-164	146	147	4244	89.8	28.8	59.3	149	14.3	2152.9	1.6	1669	468.6	228.9	18.1	3.1	341	14.1	636	4	1.11	0.09	19.22%
DD006B	DD006B-165	147	148	3895	87.6	27.9	58.8	148	13.7	1974	1.5	1548	433.9	216.8	17.8	3	333	13.3	375	7	1.03	0.05	19.26%
DD006B	DD006B-166	148	149	3600	84.5	27.1	55.9	138	13.4	1767.9	1.6	1446	398.6	210.6	16.6	2.8	319	14.1	880	18	0.95	0.13	19.42%
DD006B	DD006B-167	149	150	4022	98	30.6	62.6	160	14.5	2074.6	1.8	1597	444.6	232.2	20	3.3	367	15.2	576	51	1.07	0.08	19.03%
DD006B	DD006B-168	150	151	3754	91.7	30.6	58.8	147	14.4	1951.3	1.8	1458	410	206.1	18.4	3.3	362	15.6	888	7	1	0.13	18.67%
DD006B	DD006B-169	151	152	4325	85.8	28.5	59.4	145	13.2	2235	1.6	1682	475.1	228.6	17.8	3.2	340	14.2	123	2	1.13	0.02	19.05%
DD006B	DD006B-170	152	153	3483	68	23.7	50.3	121	10.6	1813	1.4	1349	378	190.5	14.3	2.7	267	12.5	1285	67	0.91	0.18	18.91%
DD006B	DD006B-171	153	154	3573	67.4	23.7	52.9	128	11.1	1796.6	1.5	1416	397.1	206.2	14.7	2.7	263	12.7	2413	26	0.93	0.35	19.41%
DD006B	DD006B-172	153	154	3021	59.4	19.7	44.9	108	9.4	1486.3	1.2	1175	331.8	168.6	12.5	2.2	226	10.4	3952	17	0.78	0.57	19.24%
DD006B	DD006B-173	154	154.8	3398	73.5	25.9	53.6	127	11.7	1674.4	1.4	1344	373.8	198.6	14.4	2.8	297	12.5	1531	38	0.89	0.22	19.49%
DD006B	DD006B-174	154.8	156	2449	32.9	11	32.9	72.9	5.4	1272.2	0.6	904.7	260.8	134.2	7.1	1.2	140	5.4	1782	62	0.62	0.26	18.65%
DD006B	DD006B-175	156	157	2498	32	11.5	31.5	72	5.2	1277.1	0.6	895.9	259.8	122.9	7.4	1.2	143	5.4	1721	185	0.63	0.25	18.38%
DD006B	DD006B-176	157	158	2846	64.9	17.5	40.4	107	9	1606.9	1	1010	293.1	150.6	13.6	1.8	226	8.2	1245	234	0.75	0.18	17.37%
DD006B	DD006B-177	158	159	3193	60.6	16	44.4	116	8.8	1682.6	0.8	1142	333	161.2	13.7	1.5	201	7.1	1339	607	0.82	0.19	18.02%
DD006B	DD006B-178	159	160	3367	40.4	11	35.7	83.8	5.5	1952.4	0.6	1120	340.3	143.8	9.5	1.1	131	5.5	813	94	0.85	0.12	17.20%
DD006B	DD006B-179	160	161	3860	35.9	10.1	37.1	84.3	5.2	2353.4	0.6	1224	381.6	158.1	9	1	120	5.5	1403	198	0.97	0.20	16.54%
DD006B	DD006B-180	161	162	5610	15.1	3.8	40.9	85	1.8	4064.8	0.3	1452	496.3	170.4	6	<0.5	42.7	2.6	2076	167	1.4	0.30	13.88%
DD006B	DD006B-182	162	162.8	4298	53.3	14.8	47.8	113	7.3	2606.3	0.9	1437	433.3	189.8	12.4	1.5	171	7.5	1461	323	1.1	0.21	17.00%
DD006B	DD006B-183	162.8	163.6	4055	65.4	20.8	45.7	111	10.1	2418	1.4	1322	402.8	176.9	13.3	2.4	248	12	1730	278	1.04	0.25	16.52%
DD006B	DD006B-184	163.6	165	4699	95.4	31.9	57.7	151	14.9	2781.1	2	1566	470.2	211.9	19.8	3.4	365	17.4	1320	6	1.23	0.19	16.55%
DD006B	DD006B-185	165	166	4861	78	25.6	55.4	131	11.9	2968.9	1.5	1581	484.9	204.2	16.9	2.9	294	13.1	163	6	1.26	0.02	16.42%
DD006B	DD006B-186	165	166	5362	76.6	22.8	56.7	136	11.6	3192.8	1.5	1739	531.5	217.7	16.3	2.5	275	12.5	221	7	1.37	0.03	16.62%
DD006B	DD006B-187	166	167	5006	70.5	21.2	52.4	127	10.1	3042.4	1.4	1645	504.7	209.4	14.7	2.5	245	12	175	9	1.29	0.03	16.73%
DD006B	DD006B-188	167	168	5208	24.9	8.4	41.1	81.1	3.7	3439.6	0.6	1547	497.5	178.3	7.2	0.9	95.6	4.8	730	9	1.3	0.10	15.67%
DD006B	DD006B-189	168	169	6860	21.8	6.4	48	97.1	2.7	5341.7	0.3	1707	585.4	199.5	7.6	0.6	71.7	3	1758	22	1.75	0.25	13.09%
DD006B	DD006B-191	169	170	2579	43	12.2	31.4	81	6.1	1827	0.9	733	232.5	110	9.3	1.4	157	7.4	1311	708	0.68	0.19	14.12%
DD006B	DD006B-192	170	171	2027	48	11.6	33.8	92.8	6.3	1218.8	0.8	619.9	193	106.2	11.1	1.3	158	6.8	1856	130	0.53	0.27	15.28%
DD006B	DD006B-193	171	172	2111	37	11.2	29.1	74.7	5.5	1304.7	0.9	641.4	199.6	102.7	8.4	1.3	139	7.5	1560	165	0.55	0.22	15.34%
DD006B	DD006B-194	172	173	2565	72.6	20.7	38.9	116	10.3	1683.5	1.3	754.6	234.9	125.6	15.7	2.3	259	11.4	1717	504	0.69	0.25	14.26%
DD006B	DD006B-195	173	174	5052	49.6	13.1	47.7	112	6.7	3798.7	1	1356	446.5	183.8	11.6	1.5	170	8.6	1095	85	1.32	0.16	13.66%
DD006B	DD006B-196	174	175	4129	92.8	26.1	55	152	13	3092.6	1.7	1155	370.7	179	19.8	2.8	321	14.9	1272	280	1.13	0.18	13.51%
DD006B	DD006B-197	175	176	3961	32.7	9.9	37.2	81.2	4.6	2741.5	0.7	1123	359.6	144	8.1	1	115	5.7	1296	121	1.01	0.19	14.67%
DD006B	DD006B-198	176	177	3805	36.9	10.9	34.4	82.9	5.4	2778.6	0.9	1020	334.6	127.3	8.9	1.3	135	7.4	885	220	0.98	0.13	13.78%
DD006B	DD006B-199	176	177	4309	39.3	10.9	35	87.6	5.4	3315.2	0.8	1120	376.6	141.2	9.4	1.2	134	7.2	866	211	1.12	0.12	13.31%
DD006B	DD006B-200	177	178	3445	37	11.4	36.4	84.5	5.5	2090.9	0.8	1109	343.4	140.6	9.3	1.1	133	7.2	1923	206	0.87	0.28	16.62%
DD006B	DD006B-201	178	179	2821	119	43.3	48.9	144	19.9	1577.6	3	996.9	291.8	163	21.3	4.9	494	25.4	1469	145	0.8	0.21	16.17%
DD006B	DD006B-202	179	180	2752	59.7	21.3	38.8	98.8	9.6	1457.5	1.4	1005	286.7	147.1	12.7	2.4	245	11.8	1340	165	0.72	0.19	17.90%
DD006B	DD006B-203	180	181	3114	56.6	18.6	39.1	97.2	8.9	1787.3	1.4	1045	311.6	150.7	12.1	2.3	229	11.6	1798	197	0.81	0.26	16.80%
DD006B	DD006B-204	181	182	2636	91.2	34	41	113	14.9	1358.4	2.3	985.2	282.8	138.1	16.1	3.9	380	19.7	2512	211	0.72	0.36	17.64%
DD006B	DD006B-205	182	183	2344	110	40.9	42	123	17.8	1234.9	3	899	253.2	145.4	19.5	5	447	26	1355	67	0.67	0.19	17.15%
DD006B	DD006B-206	183	184	2744	55	19.1	36.8	89.4	8.5	1628	1.2	896.6	269.8	133	11.3	2.1	207	10.8	1073	131	0.72	0.15	16.26%
DD006B	DD006B-207	184	185	3233	43.7	15.1	38.5	86.9	6.5	1866.6	0.9	1079	324.6	149.3	9.9	1.7	173	8.1	1519	204	0.82	0.22	17.01%
DD006B	DD006B-208	185	186	2598	59.2	19.1	39.3	99	9.4	1424.2	1.2	948.7	269.6	145.6	12.1	2.1	240	10.7	1420	127	0.69	0.20	17.66%
DD006B	DD006B-209	186	187	2881	31.3	9.1	32.1	70.1	4.5	1567.7	0.6	1003	297.9	133	7.4	0.9	112	4.9	1919	230	0.72	0.27	18.03%
DD006B	DD006B-210	187	188	2510	69	24.2	39.9	103	11	1304.8	1.6	934	266.4	145.4	13.3	2.7	287	13.6	1711	119	0.67	0.17	17.86%
DD006B	DD006B-211	188	189	2170	70.3	26.6	35.8	94	11.7														

For personal use only

Hole_ID	Sample No	Depth_From (m)	Depth_To (m)	Ce ppm	Dy ppm	Er ppm	Eu ppm	Gd ppm	Ho ppm	La ppm	Lu ppm	Nd ppm	Pr ppm	Sm ppm	Tb ppm	Tm ppm	Y ppm	Yb ppm	Nb ppm	Mo ppm	TREO%	Nb2O5%	NdPr%
DD006B	DD006B-238	211	212	5768	83	28.1	73.6	165	12.9	3136.8	1.7	2168	625.7	291.6	18.2	3.3	323	15.1	3131	243	1.49	0.45	18.74%
DD006B	DD006B-239	211	212	5784	82.3	28.5	71.6	163	12.7	3134.8	1.9	2174	627.8	292.1	18.1	3.2	323	16.3	3292	250	1.49	0.47	18.77%
DD006B	DD006B-240	212	213	6440	102	33.8	85.7	199	15.5	3438.4	2.3	2440	699.5	335	22.3	4	398	19.5	1809	298	1.67	0.26	18.81%
DD006B	DD006B-241	213	214	5329	84	28.1	71.6	170	13.1	2822.8	1.9	2045	582.6	282	18.5	3.3	333	16.7	1827	199	1.38	0.26	18.99%
DD006B	DD006B-242	214	215	4459	113	40.5	72	183	17.7	2404	2.6	1739	483.1	267.5	21.9	4.6	453	22.3	2532	250	1.21	0.36	18.41%
DD006B	DD006B-243	215	216	3334	84.8	30.9	56.5	142	13.8	1717.3	2.2	1314	366.4	199.5	17.5	3.5	348	18.7	2954	86	0.9	0.42	18.71%
DD006B	DD006B-244	216	217	2560	68	26.9	45.9	114	11.6	1279.7	1.9	1016	277.9	164.3	14.2	3.2	295	16.8	2343	121	0.69	0.34	18.69%
DD006B	DD006B-245	217	218	3263	75.4	26.5	51.7	130	12.2	1659.3	1.7	1277	357.6	190.7	15.5	3.1	302	15.1	2494	127	0.87	0.36	18.88%
DD006B	DD006B-246	218	219	4366	74.2	26.1	58.1	148	12.3	2391.5	1.8	1540	454.9	213.7	17	2.9	302	15.8	2461	156	1.13	0.35	17.67%
DD006B	DD006B-247	219	220	5324	72.7	22.8	62.3	151	11	3016.2	1.5	1817	551.5	241.1	16.4	2.6	269	13.1	2020	145	1.36	0.29	17.46%
DD006B	DD006B-248	220	221	5082	66.2	20.5	54.2	127	10.1	3170.6	1.4	1569	483.5	202.9	13.8	2.4	239	12.3	2034	174	1.3	0.29	15.84%
DD006B	DD006B-249	221	222.3	3749	40.5	11.8	44.2	101	5.8	2257.1	0.9	1242	370.8	167.5	10.2	1.4	140	8.1	2223	114	0.95	0.32	16.89%
DD006B	DD006B-250	222.3	223	5231	19.1	6.7	34.7	66.6	2.8	3688.6	0.5	1457	480.8	168.2	5.2	0.7	69.2	3.9	1500	238	1.32	0.21	14.73%
DD006B	DD006B-251	223	224	4185	22.6	6.5	27.1	60.1	3	3119	0.5	1044	356.4	124.5	5.8	0.9	80.3	4.1	857	332	1.06	0.12	13.22%
DD006B	DD006B-252	223	224	3373	23.5	7.2	25.1	58.8	3.2	2380.3	0.6	900.9	298	108.7	5.8	1	83.6	5.6	1009	274	0.85	0.14	14.07%
DD006B	DD006B-253	224	225.16	3439	25.5	8.8	30.5	66.5	3.8	2326.4	0.7	960.4	310.7	126.6	6.8	1	97.1	5.8	1460	303	0.87	0.21	14.64%
DD006B	DD006B-254	225.16	226	6166	26.3	8.1	44.3	83.3	3.6	4147.8	0.5	1713	568.3	197.3	7.3	1	93.5	4.5	1020	64	1.53	0.15	14.91%
DD006B	DD006B-255	226	227	3954	25.5	8.8	33.9	69.1	3.8	2213.1	0.7	1306	404.4	156.1	6.2	1	97.8	5.7	574	12	0.97	0.08	17.62%
DD006B	DD006B-256	227	227.8	4726	44.6	14	44.5	107	6.5	2924.7	1.1	1418	450.5	178.3	10.9	1.7	158	9.6	796	23	1.18	0.11	15.80%
DD006B	DD006B-257	227.8	229	6960	25.8	7.4	45.2	91.5	3.5	4951.5	0.5	1783	616.6	209.3	7.8	0.9	84.6	4.6	1370	125	1.73	0.20	13.85%
DD006B	DD006B-258	229	230	3023	21.4	7	27.9	58.8	3.1	3119	0.6	928.6	292	113	5.6	0.8	84.4	4.9	902	163	0.75	0.13	16.27%
DD006B	DD006B-259	230	231	1979	93.7	30.9	55.4	156	14.3	967.7	2.8	844.3	221.9	165.8	20	4	361	24.1	2615	77	0.58	0.37	18.36%
DD006B	DD006B-260	231	232	2351	33	10.5	27.5	64.1	4.8	1321.6	0.9	774.7	234.7	104.3	7.3	1.5	126	7.4	1402	102	0.59	0.20	16.99%
DD006B	DD006B-262	232	233	2586	39.3	12.8	33.9	81.7	6.1	1330.8	0.8	934.1	270.3	127.7	9	1.5	150	7.2	2676	67	0.66	0.38	18.38%
DD006B	DD006B-263	233	234	3099	56.2	19.9	43.1	104	8.8	1585.2	1.6	1172	329	166.4	12.4	2.5	227	13.6	3349	145	0.8	0.48	18.71%
DD006B	DD006B-264	234	235	6774	87	30.6	78.9	183	13.6	3778.6	2.5	2389	712.6	310.2	20	3.8	350	21.2	2341	340	1.73	0.33	17.93%
DD006B	DD006B-265	235	236	3650	51	17.8	44.4	102	8.1	1951	1.4	1274	369.9	172.9	11.3	2.1	203	11.6	1822	130	0.92	0.26	17.82%
DD006B	DD006B-266	235	236	3450	46.3	16.4	40.7	98.3	7.4	1898	1.2	1175	350.2	162.8	10.6	2.1	186	10.5	1771	120	0.87	0.25	17.45%
DD006B	DD006B-267	236	236.9	4172	105	39.6	63.4	160	16.9	2195.4	2.9	1581	446.5	228.9	21	4.8	438	24.9	2229	245	1.12	0.32	18.18%
DD006B	DD006B-268	236.9	238.2	1016	30	8.6	17.5	46.9	4.5	534.5	0.8	395.6	109.7	60.2	6.4	1.2	111	7.1	674	16	0.28	0.10	18.32%
DD006B	DD006B-269	238.2	239	4205	86.2	35.6	57.8	136	14.7	2262.1	2.8	1564	442.1	213.6	16.2	4.7	377	24.3	3353	110	1.11	0.48	18.11%
DD006B	DD006B-271	239	240	3466	83.8	37.8	50.3	122	14.9	1697.2	3.1	1401	375	187.5	14.9	5	392	26.7	4716	128	0.92	0.67	19.20%
DD006B	DD006B-272	240	240.6	2630	96.8	43.9	47.1	123	17.9	1268.1	3.5	1064	291.1	159.6	16.6	5.8	464	30.2	3899	132	0.74	0.56	18.40%
DD006B	DD006B-273	240.6	241.8	3214	79.4	36.6	48.9	117	14.8	1649.4	2.9	1234	345.8	181	14.8	4.8	376	25.1	3724	25	0.86	0.53	18.31%
DD006B	DD006B-274	241.8	243	3626	82.3	37.6	54.1	127	15.3	1913.3	3.1	1426	401.3	204.6	15.4	5.2	400	26.9	1974	128	0.98	0.28	18.66%
DD006B	DD006B-275	243	244	3012	97.8	44.5	53.2	134	17.7	1511.1	3.9	1265	344.6	193.3	17.3	5.9	472	33.9	2820	181	0.85	0.40	19.00%
DD006B	DD006B-276	244	245	3828	89.7	39.8	58.4	139	15.8	1974.7	3.2	1580	436.7	222.3	17.2	5.2	417	27.9	7448	152	1.04	0.17	19.40%
DD006B	DD006B-277	245	246	3950	74.1	32.6	51.4	120	13.3	2238.9	2.8	1457	422.8	198.7	14	4.6	344	24.2	6075	29	1.05	0.87	17.90%
DD006B	DD006B-278	246	247	3428	83.2	39.9	49.9	119	14.8	1854.5	3.6	1341	378.6	182.6	14.9	5.5	405	31.4	1634	32	0.93	0.23	18.42%
DD006B	DD006B-279	246	247	3539	81.7	38.2	50.9	118	14.9	1876.9	3.4	1361	389	191.8	14.8	5.1	390	29.7	1690	34	0.95	0.24	18.39%
DD006B	DD006B-280	247	248	4173	110	53.5	62.2	153	20	2282.9	4.7	1628	459.5	239.4	19	7.2	535	40.6	1308	85	1.15	0.19	18.16%
DD006B	DD006B-281	248	249	4269	80.5	37.9	54.7	127	14.4	2315.8	3.2	1596	458.8	217.5	14.8	5.1	384	27.1	1841	74	1.13	0.26	18.22%
DD006B	DD006B-282	249	250	3322	57.1	28	45.5	102	10.5	1760.5	2.6	1302	366.7	176.4	11.4	3.9	284	22.1	2767	53	0.88	0.40	18.98%
DD006B	DD006B-283	250	250.5	1540	18.4	6.5	17.9	38.6	2.6	810.7	0.5	552.8	163.2	73.5	4	0.8	72.2	4.4	1140	192	0.39	0.16	18.48%
DD006B	DD006B-284	250.5	251.9	3054	155	74.7	70.4	195	28.8	1565.3	5.8	1270	345	224.7	26.7	9.7	775	49.7	1458	145	0.92	0.21	17.46%
DD006B	DD006B-285	251.9	253	6178	30	9.4	52.6	99.2	4.1	3952.8	0.7	1932	609.9	231.2	8.3	1.1	111	6.1	1465	297	1.55	0.21	16.41%
DD006B	DD006B-286	253	254	2872	25.8	8.9	31.7	66.1	3.8	1672.8	0.8	962.2	294.7	130.5	6.5	1.2	106	7.2	1555	41	0.73	0.22	17.33%
DD006B	DD006B-287	254	255	4188	27.3	8.9	36.1	73.2	3.8	2806.2	0.9	1178	383.5	148.6	6.7	1.2	102	7.7	851	165	1.05	0.12	14.86%
DD006B	DD006B-288	255	256	6634	31.9	10	46	90.9	4.5	4807.2	1	1773	608.8	202.4	8.2	1.4	114	8.9	1251	205	1.68	0.18	14.14%
DD006B	DD006B-289	256	256.8	10332	38.5	12.6	54.5	114	5.5	8396.2	1.2	2221	832	238.2	10.5	1.5	140	10.5	871	167	2.63	0.12	11.63%
DD006B	DD006B-290	256.8	258	4649	30.6	9.7	41.6	87.4	4.3	3051.9	0.8	1421	453.5	178.5	7.9	1.2	112	6.6	629	52	1.18	0.09	15.91%
DD006B	DD006B-291	258	259.3	4590	31.2	9.5	40.6	82.9	4.2	3014.6	0.7	1370	437	169.5	8	1.1	107	6.5	1264	276	1.16	0.18	15.62%
DD006B	DD006B-292	258	259.3	4080	30.5	9.5	39.5	80.1	4.1	2592	0.7	1271	399.9	156.5	7.4	1	109	6.1	1201	125	1.03	0.17	16.23%
DD006B	DD006B-293	259.3	260.2	2670	32.5	8.4	27.7	67.9	4.8	1619.5	0.5	796.4	255.7	108.5	7.8	0.9	114	4.2	4326	1644	0.67	0.62	15.70%

For personal use only

Hole_ID	Sample No	Depth_From (m)	Depth_To (m)	Ce ppm	Dy ppm	Er ppm	Eu ppm	Gd ppm	Ho ppm	La ppm	Lu ppm	Nd ppm	Pr ppm	Sm ppm	Tb ppm	Tm ppm	Y ppm	Yb ppm	Nb ppm	Mo ppm	TREO%	Nb2O5%	NdPr%
DD006B	DD006B-321	281.7	282.4	4021	58.5	16.6	60.2	135	8.1	2016.4	1	1606	441.3	233.8	14	1.8	203	9	5049	6	1.03	0.72	19.80%
DD006B	DD006B-322	282.4	283	4368	52.4	15.4	55.2	122	7.6	2586.1	1	1522	450.3	211.2	12.4	1.7	191	8.7	1999	182	1.13	0.29	17.52%
DD006B	DD006B-323	283	284	4787	47.3	13.5	48.1	110	6.4	3410.7	1	1319	433.3	181.2	11.1	1.5	169	8.7	1830	291	1.24	0.26	14.18%
DD006B	DD006B-324	284	285	3365	48.9	12.7	54.7	120	6.4	1866.8	0.9	1193	349.2	201.9	11.3	1.4	163	7.6	1963	134	0.87	0.28	17.77%
DD006B	DD006B-325	285	286	4282	54.8	14.9	54.5	123	7.6	2256.4	0.9	1535	452	209	13.2	1.4	188	8	2198	86	1.08	0.31	18.43%
DD006B	DD006B-326	286	287	4299	57.2	14.4	55.1	127	7.5	2387.5	1	1524	447.5	211.7	13.7	1.8	190	8.5	1693	126	1.1	0.24	18.00%
DD006B	DD006B-327	287	287.9	4868	35.9	9.3	44.3	96.4	4.5	3276.3	0.8	1445	470.2	178.6	9.1	1.1	112	6.7	1685	108	1.24	0.24	15.48%
DD006B	DD006B-328	287.9	288.45	1596	32.5	7.5	22.1	53.5	4.4	912.5	0.5	525.4	159.9	75.3	6.9	0.7	107	4.5	853	115	0.41	0.12	16.65%
DD006B	DD006B-329	288.45	289	4991	40.9	11.6	49.2	103	5.6	3013	1	1628	502.7	202.2	9.7	1.5	141	8.5	1310	101	1.25	0.19	16.98%
DD006B	DD006B-330	289	290	4408	87.7	30.4	54.3	132	14.4	2694.3	2.5	1488	448.8	204.4	16.9	4	365	21.1	1813	27	1.17	0.26	16.55%
DD006B	DD006B-331	290	291	4102	50.1	14	48.7	108	6.8	2303.7	1	1457	434.4	201.1	11	1.5	178	8.7	1945	44	1.05	0.28	18.08%
DD006B	DD006B-332	290	291	4159	50	15	50.5	112	7.6	2277.7	1.1	1496	444.7	202.8	11.8	1.7	190	9.6	1621	58	1.06	0.23	18.34%
DD006B	DD006B-333	291	292	4694	50.8	14.5	56.4	122	7.5	2538	1	1727	504.8	231.7	12.6	1.6	181	8.6	1824	289	1.19	0.26	18.77%
DD006B	DD006B-334	292	293	4996	48.9	14	58.9	121	6.7	2718.1	0.9	1821	540.9	240.3	11.9	1.4	170	7.7	1934	493	1.26	0.28	18.74%
DD006B	DD006B-335	293	294	4360	42	12.5	51.1	107	6.1	2384.7	0.9	1531	462.1	200.8	10.6	1.5	147	7.9	1742	209	1.09	0.25	18.25%
DD006B	DD006B-336	294	295.3	4860	23.6	4.9	50.2	97.5	2.6	2880.4	0.4	1588	490.1	206.6	7.5	0.5	57.4	3.6	1442	929	1.2	0.21	17.27%
DD006B	DD006B-337	295.3	296	2173	48.4	17.3	25.6	62.9	8.1	1174.3	1.3	730.2	225.7	97.3	9	2	208	11	1001	322	0.56	0.14	16.99%
DD006B	DD006B-338	296	297	2451	40.8	13.7	25.2	60.9	6.5	1381.6	0.9	758.8	242.2	98.9	7.7	1.7	168	7.9	1132	552	0.62	0.16	16.21%
DD006B	DD006B-339	297	298	5312	43.1	10.3	61.4	131	5.4	2929.7	0.9	1850	562.8	248.1	12.1	1.1	127	7.7	2154	519	1.32	0.31	18.23%
DD006B	DD006B-340	298	299.3	4737	63.3	19.3	54.3	124	9.4	2597.1	1.4	1630	492	213.2	14.3	2.2	236	11.8	1820	1055	1.2	0.26	17.74%
DD006B	DD006B-342	299.3	300.2	1071	46.4	19.5	19.6	50.5	8.7	571.9	1.3	430.6	120.6	67.7	7.9	2.1	222	11	403	104	0.31	0.06	17.66%
DD006B	DD006B-343	300.2	301	944	29	14.8	11.8	31.6	5.7	528.4	1.2	327.8	98	44.5	4.6	1.8	158	10	295	72	0.26	0.04	16.37%
DD006B	DD006B-344	301	302	678.5	12.6	6.8	8.1	18.7	2.5	386.3	0.7	241.9	70.7	33.4	2.1	0.9	68.8	5.7	327	63	0.18	0.05	17.32%
DD006B	DD006B-345	302	302.6	1443	24.2	10	15.4	36.8	4	815.3	1	464.8	141.8	61.8	4.4	1.4	108	8.4	440	125	0.37	0.06	16.46%
DD006B	DD006B-346	302	302.6	1370	22.9	10.3	14.9	36.2	4	775.9	1	444.5	136	59.6	4.3	1.3	109	8.4	405	129	0.35	0.06	16.50%
DD006B	DD006B-347	302.6	304	5212	79.8	26.4	68.6	153	12.3	2820.9	1.8	1919	565.6	265.9	17.1	2.9	308	15.4	1087	147	1.34	0.16	18.48%
DD006B	DD006B-348	304	305	5586	62.7	17.4	68.6	150	8.8	3023	1.4	2046	601.9	271.3	15.3	2.1	221	12.1	999	115	1.42	0.14	18.70%
DD006B	DD006B-349	305	306	5059	65.5	19.2	65.6	145	9.6	2591.7	1.4	1941	561	260.4	15.2	2.1	241	12.2	3218	97	1.29	0.46	19.43%
DD006B	DD006B-351	306	307	3750	83.7	29.4	67.4	154	13.5	1544.5	2	1706	455	255.9	17.8	3.3	347	16.8	3002	24	0.99	0.43	21.81%
DD006B	DD006B-352	307	308.3	2533	51.9	15.3	42.9	96	7.5	1134	1	1090	295.4	168.3	10.8	1.6	194	8.8	1928	13	0.66	0.28	20.91%
DD006B	DD006B-353	308.3	309.7	3216	55.1	16.8	54.1	117	8.1	1401.3	1.1	1468	383.9	217.5	12.4	1.9	205	9.5	3023	13	0.84	0.43	22.05%
DD006B	DD006B-354	309.7	310.3	3168	51.1	15	43.4	96.9	7.8	1280.8	1	1261	364.9	170.1	11	1.7	193	8.6	2226	75	0.78	0.32	20.78%
DD006B	DD006B-355	310.3	311.75	3683	57.8	16.6	51	115	8.4	1570.9	1.1	1477	423.8	203.1	12.6	1.9	208	9.2	2785	169	0.92	0.40	20.69%
DD006B	DD006B-356	311.75	312.6	1963	38.8	15.2	26.4	64.4	6.4	1111.6	1.1	690.8	200.8	102.6	7.8	1.7	170	9.1	1143	39	0.52	0.16	17.23%
DD006B	DD006B-357	312.6	313	4972	55.9	15	64.8	137	7.7	2381.1	1	1895	555.2	258.3	13.7	1.6	189	8.8	3367	406	1.24	0.48	19.82%
DD006B	DD006B-358	313	314	5633	36.5	10.8	45	91.9	5.2	3936.6	0.7	1584	519.7	183.9	9.2	1.2	125	5.7	3356	55	1.43	0.48	14.73%
DD006B	DD006B-359	313	314	5939	37.4	10.6	46.3	96.8	5.3	4150.7	0.8	1661	547.3	196.3	9.1	1.2	127	6.8	3533	66	1.5	0.51	14.69%
DD006B	DD006B-360	314	315	4468	52.8	17	53	113	7.9	2414.4	1.2	1572	476.3	213.4	12.4	1.8	196	10.2	1817	7	1.13	0.26	18.19%
DD006B	DD006B-361	315	316	4244	65.4	21.3	60.1	130	10.3	2228.7	1.4	1647	470.4	233.9	14.5	2.4	259	12.2	1143	5	1.1	0.16	19.21%
DD006B	DD006B-362	316	317	4468	83.3	28.1	68.2	153	12.8	2375.6	1.9	1750	492.6	261.5	17.2	3.3	327	16.6	885	60	1.18	0.13	19.01%
DD006B	DD006B-363	317	318	4873	99.9	33	74.8	173	15.6	2541.8	2	1919	536	280.6	20.3	3.6	389	17.1	1260	104	1.29	0.18	19.06%
DD006B	DD006B-364	318	319	4442	80.9	28.2	62.2	145	12.5	2380.6	1.8	1719	491.5	241.5	16.5	3.1	317	15.2	2767	42	1.17	0.40	18.93%
DD006B	DD006B-365	319	320	3619	75.2	25.1	53.6	126	11.9	1913.6	1.5	1376	395.8	203.6	15.7	2.6	304	13	1400	9	0.95	0.20	18.57%
DD006B	DD006B-366	320	321	4085	85.4	29.2	60.5	140	13.5	2148.9	1.9	1578	447.8	226.4	16.8	3.1	340	15.9	1175	12	1.08	0.17	18.78%
DD006B	DD006B-367	321	322	4066	70.1	22.7	56.3	127	11.1	2145.1	1.5	1558	448.4	213.4	14.6	2.4	277	13	1812	8	1.06	0.26	18.96%
DD006B	DD006B-368	322	323	4237	102	33.8	67.9	162	16.3	2224.8	2.2	1647	469.1	247.3	20.1	3.9	410	19	978	2	1.13	0.14	18.69%
DD006B	DD006B-369	323	324	3975	101	33.6	66.5	160	15.8	2113.2	2.1	1601	447.7	240	19.7	3.5	394	17.6	1226	4	1.08	0.18	19.00%
DD006B	DD006B-370	324	325	3438	78.3	25.8	54.3	129	12.3	1737.1	1.6	1356	379.6	201.7	16	2.9	314	13.6	2561	11	0.91	0.37	19.06%
DD006B	DD006B-371	325	326	3341	51.6	17.1	45	98.5	8	1725.1	1	1273	371	176.7	10.8	1.6	200	8.8	2710	22	0.86	0.39	19.13%
DD006B	DD006B-372	325	326	3484	53.3	18.1	47.5	105	8.2	1795.9	1.1	1328	380.8	187.3	11.6	1.9	211	9	2614	23	0.9	0.37	19.07%
DD006B	DD006B-373	326	327	3409	51.7	15.6	45.5	102	7.6	1799.4	0.9	1304	369.3	178	11.1	1.5	184	7.5	3505	25	0.88	0.50	19.07%
DD006B	DD006B-374	327	328	3921	60.9	16.5	56.4	124	8.5	2036	0.9	1492	430.8	212.3	13.6	1.8	204	7.8	3941	14	1.01	0.56	19.11%
DD006B	DD006B-375	328	329	3539	74.6	23.7	56.2	130	11.8	1809	1.5	1404	394.5	209.6	15.5	2.5	298	12.8	2512	310	0.94	0.36	19.21%
DD006B	DD006B-376	329	330	4145	85	28	62.3	151	13.6	2182.1	1.7	1606	452.6	236	17.5	2.9	334	14.5	2140	5	1.09	0.31	18.81%
DD006B	DD006B-377	330	331	3964	63.8	20.3	55.1																

For personal use only

Hole_ID	Sample No	Depth_From (m)	Depth_To (m)	Ce ppm	Dy ppm	Er ppm	Eu ppm	Gd ppm	Ho ppm	La ppm	Lu ppm	Nd ppm	Pr ppm	Sm ppm	Tb ppm	Tm ppm	Y ppm	Yb ppm	Nb ppm	Mo ppm	TREO%	Nb2O5%	NdPr%
DD006B	DD006B-404	354	355	4145	73.5	23	60	143	11	2120.9	1.5	1645	463.3	233.1	16.5	2.7	274	13.1	1647	143	1.08	0.24	19.49%
DD006B	DD006B-405	355	356	3554	51.4	15	53.7	118	7.6	1697.2	0.9	1510	418.1	211	12.3	1.6	186	7.6	2873	139	0.92	0.41	20.98%
DD006B	DD006B-406	356	357	3380	65.2	21	50.7	119	9.8	1708.8	1.3	1368	379.8	193.1	14	2.3	249	11.5	1763	47	0.89	0.25	19.68%
DD006B	DD006B-407	357	358	3420	64.9	24.4	47.2	109	10.8	1749.2	1.6	1335	379.7	181.9	12.9	2.6	271	13.4	1962	77	0.89	0.28	19.17%
DD006B	DD006B-408	358	359	3891	92.6	36.5	61.1	146	16.5	1884.8	2.4	1645	448.7	235.1	17.8	4.2	415	20.3	1528	84	1.05	0.22	20.00%
DD006B	DD006B-409	359	360	3674	85.6	38.2	50.9	123	16.9	1852.8	2.3	1484	413	203.5	15.1	4.1	421	19.5	1863	56	0.99	0.27	19.22%
DD006B	DD006B-410	360	361	3726	181	70.6	66.9	184	34.2	1881.2	3.4	1487	413.4	232.9	28.1	6.7	821	29.4	2226	63	1.08	0.32	17.61%
DD006B	DD006B-411	361	362	4221	128	46.7	65.9	164	22.8	2125.2	2.9	1724	474.4	245.8	22	5	545	25	1436	60	1.15	0.21	19.06%
DD006B	DD006B-412	361	362	3836	123	46.8	61.3	151	22.2	1921.8	2.9	1554	428.7	224	21.2	4.9	529	25.2	2678	51	1.05	0.38	18.85%
DD006B	DD006B-413	362	363	4097	74	25.5	56.2	134	12	2077.9	2.2	1595	449.6	220.7	16	3.1	278	18.5	682	109	1.06	0.10	19.24%
DD006B	DD006B-414	363	364	3643	73	28.7	57.7	137	12.2	1844.3	3.5	1497	409.4	218.4	15.7	4.3	310	30.1	2397	147	0.97	0.34	19.62%
DD006B	DD006B-415	364	365	3561	65.9	31	47.8	110	11.8	1805.7	3.3	1383	394.7	188.8	13.3	4.7	310	28.5	2300	112	0.93	0.33	19.03%
DD006B	DD006B-416	365	366	3106	65.3	28.1	48.1	117	11.1	1493.2	2.7	1246	345.7	179.6	14	3.9	281	23.2	1895	125	0.82	0.27	19.48%
DD006B	DD006B-417	366	367	2815	33.6	10.6	36.7	78.9	4.8	1326.9	1	1125	312.5	155	7.5	1.3	124	8.3	1510	114	0.71	0.22	20.31%
DD006B	DD006B-418	367	368	3530	45.5	15.2	50.5	107	6.7	1662.4	1.2	1456	399.6	204.8	11	1.8	171	10.6	2231	96	0.9	0.32	20.63%
DD006B	DD006B-419	368	369	3848	30.7	8.9	44.5	87.9	4.4	1892.8	0.6	1559	433.6	205.5	7.9	1	108	5.4	989	85	0.96	0.14	20.65%
DD006B	DD006B-420	369	370	3089	35.6	10	42.9	91.7	5	1436.7	0.6	1276	353.6	178.5	8.7	1.2	120	5.5	1397	45	0.78	0.20	20.91%
DD006B	DD006B-422	370	371	3076	41.6	12.2	44.9	98.4	6	1423.6	0.8	1289	353.9	182.4	10.3	1.2	147	6.5	1752	10	0.78	0.25	20.94%
DD006B	DD006B-423	371	372	2888	37.4	10.9	39.6	88.9	5.4	1366.7	0.6	1151	320.5	156	9.2	1.1	125	5.1	1463	8	0.73	0.21	20.24%
DD006B	DD006B-424	372	373	3358	43.9	12	48.5	106	6.4	1511.8	0.7	1392	387.9	193.2	10.5	1.3	145	6	1283	2	0.85	0.18	21.03%
DD006B	DD006B-425	373	374	3135	54.6	15.6	50.2	118	8.2	1473.8	0.9	1311	359.9	192.4	12.4	1.6	189	8.1	1335	4	0.81	0.19	20.57%
DD006B	DD006B-426	373	374	3087	54.9	15.9	50.8	118	8.3	1428.5	0.8	1288	351.6	196.6	12.9	1.6	190	7.1	1486	5	0.8	0.21	20.53%
DD006B	DD006B-427	374	375	3466	48.2	13.2	51.5	110	6.9	1627.2	0.7	1437	394.3	202.7	11.6	1.3	165	6.1	3178	5	0.88	0.45	20.72%
DD006B	DD006B-428	375	376	3079	39.2	12.1	39.1	87	6	1483.8	0.7	1193	341	162.5	9.2	1.2	139	5.9	6108	28	0.77	0.87	19.84%
DD006B	DD006B-429	376	377	2896	54.1	16.6	44.7	104	8.5	1373.7	1	1146	319.4	165.9	12.3	1.8	200	8.7	3501	38	0.74	0.50	19.68%
DD006B	DD006B-431	377	378	2288	33.1	10.2	30.4	71	4.9	1136.6	0.5	860.5	243.7	117.6	7.5	0.9	119	4.4	763	57	0.58	0.11	19.12%
DD006B	DD006B-432	378	379	2914	45.5	14.1	42.6	97	6.6	1387.5	0.8	1157	321.5	170.2	10.3	1.5	166	6.7	964	8	0.74	0.14	19.89%
DD006B	DD006B-433	379	380.35	3066	53.4	16.6	46.4	105	8.1	1427.4	1	1232	342.1	173	11.7	1.7	201	8.3	1916	8	0.78	0.27	20.06%
DD006B	DD006B-434	380.35	381	4182	83.7	29.6	69.2	159	13.9	2023.2	1.6	1716	476.1	260.9	17.9	3	326	13.5	1567	112	1.1	0.22	19.94%
DD006B	DD006B-435	381	382	4626	75.2	26.1	66.6	149	12.2	2252.2	1.4	1895	534.3	264.4	16.2	2.8	295	12.1	1168	179	1.2	0.17	20.26%
DD006B	DD006B-436	382	383	3852	68.2	23	58.6	132	10.8	1860.3	1.4	1633	446.4	228.8	14.7	2.5	264	12.1	1458	187	1.01	0.21	20.61%
DD006B	DD006B-437	383	384	3946	75.3	24.3	60.6	145	12	1959.6	1.5	1602	442.6	229.4	16.1	2.5	288	12.7	1695	167	1.03	0.24	19.77%
DD006B	DD006B-438	384	385	4323	65.7	21.3	54.8	126	10.4	2222.6	1.4	1650	478.6	215.2	14.2	2.4	251	11.9	1565	185	1.11	0.22	19.22%
DD006B	DD006B-439	384	385	4081	61.3	21.8	50.7	113	9.9	2065	1.3	1534	441.9	195.4	12.7	2.3	246	11	2055	186	1.04	0.29	19.05%
DD006B	DD006B-440	385	386	3882	84.1	28.3	60.5	146	14.1	1916.4	1.7	1580	439.2	226.8	17.5	3.1	329	14.5	1756	78	1.03	0.25	19.68%
DD006B	DD006B-441	386	387.4	4162	82.6	28.3	62.3	147	13.5	2057.1	1.8	1668	467.6	230.7	17.3	3	329	15.4	1628	54	1.09	0.23	19.61%
DD006B	DD006B-442	387.4	388.2	3564	88.8	30.7	58.2	145	14.8	1747.1	1.9	1495	406	218.7	17.2	3.4	357	16.3	2646	4	0.96	0.38	19.84%
DD006B	DD006B-443	388.2	389	3805	94.7	32.3	62	151	15.7	1851.7	2	1582	438.5	232.5	18.8	3.6	377	17.1	1422	4	1.02	0.20	19.82%
DD006B	DD006B-444	389	390	3856	82.3	27.1	58.7	145	13.7	1878.1	1.6	1576	434.8	226.5	17.3	3.1	324	13.3	1103	17	1.02	0.16	19.80%
DD006B	DD006B-445	390	391	3551	79.2	28.5	52.3	130	13.3	1675.3	1.7	1404	394.1	201.2	15.9	3.1	321	14.6	799	22	0.93	0.11	19.44%
DD006B	DD006B-446	391	392	3960	112	41.1	67.5	171	19.2	1960	2.5	1614	448.2	242.4	21.3	4.5	471	21.2	1863	4	1.08	0.27	19.18%
DD006B	DD006B-447	392	393	4386	68.2	20.2	62.4	141	10.2	2142.5	1.2	1740	482.9	239.7	15.6	2.1	241	10.1	1224	16	1.12	0.18	19.83%
DD006B	DD006B-448	393	394	4958	56.8	15.8	72.1	154	8.3	2390.9	0.9	2072	572.6	288.8	14.9	1.8	198	7.7	2614	7	1.27	0.37	20.88%
DD006B	DD006B-449	394	395	4611	20.2	4.4	56.3	108	2.2	2262.7	0.3	1852	519.2	244.8	7.5	<0.5	50.9	2.8	1841	22	1.14	0.26	20.79%
DD006B	DD006B-450	395	396	4136	19.8	5.1	52.7	102	2.5	1979.7	0.3	1693	468.8	233.9	7.5	<0.5	59.7	3	977	35	1.03	0.14	21.08%
DD006B	DD006B-451	396	397	4698	44.2	14.5	58.5	118	7	2298.9	0.8	1904	533.5	255.1	11.3	1.7	173	7.2	766	141	1.19	0.11	20.55%
DD006B	DD006B-452	396	397	4835	51.3	15.5	61.2	123	7.8	2387.5	1	1977	558.8	257.7	11.7	1.7	191	8.4	724	144	1.23	0.10	20.63%
DD006B	DD006B-453	397	398	4350	88.2	30.8	66.8	158	14.9	2116.8	2	1722	484	241.5	18	3.5	358	17.1	2895	148	1.13	0.41	19.45%
DD006B	DD006B-454	398	399	3930	88.5	30.7	61.5	149	14.2	1972.5	1.8	1538	435.9	225.7	17.7	3.2	348	15.8	3798	71	1.04	0.54	19.05%
DD006B	DD006B-455	399	400	4598	97.4	34.3	68.5	165	16.9	2269.5	2.1	1859	519.6	257	19.9	3.8	406	18.4	1748	50	1.21	0.25	19.61%
DD006B	DD006B-456	400	401	4437	81.4	27.6	64.9	151	13	2185.5	1.6	1796	502.6	250.5	17.3	3.1	325	14	2763	51	1.16	0.40	19.86%
DD006B	DD006B-457	401	402	3263	91.8	36	51.2	130	15.9	1563.4	2.3	1297	361	187.5	16.8	4.1	407	19.4	5410	98	0.87	0.77	18.96%
DD006B	DD006B-458	402	403	3565	67.2	20.6	52.2	121	10.7	1974.8	1.2	1339	383	193.9	14.3	2.2	260	10	1207	113	0.94	0.17	18.32%
DD006B	DD006B-459	403	404	3445	29.6	7.8	40.3	84.8	4.2	1627.9	0.5	1344	380.7	172	7.6	0.8	96.4	4.1	3313	118	0.85	0.47	20.33%
DD006B	DD006B-460	404	405	4192	37.2	9.5	56																

Section 1: Sampling Techniques and Data

(Criteria in this section apply to all succeeding sections)

Criteria	JORC Code explanation	Commentary
Sampling techniques	<p><i>Nature and quality of sampling (e.g. cut channels, random chips, or specific specialised industry standard measurement tools appropriate to the minerals under investigation, such as down hole gamma sondes, or handheld XRF instruments, etc). These examples should not be taken as limiting the broad meaning of sampling.</i></p> <p><i>Include reference to measures taken to ensure sample representivity and the appropriate calibration of any measurement tools or systems used.</i></p> <p><i>Aspects of the determination of mineralisation that are Material to the Public Report.</i></p> <p><i>In cases where 'industry standard' work has been done this would be relatively simple (e.g. 'reverse circulation drilling was used to obtain 1 m samples from which 3 kg was pulverised to produce a 30 g charge for fire assay'). In other cases, more explanation may be required, such as where there is coarse gold that has inherent sampling problems. Unusual commodities or mineralisation types (e.g.submarine nodules) may warrant disclosure of detailed information.</i></p>	<p>Diamond core was logged both for geological and mineralised structures as noted above with all 2025 drilling geotechnically logged. The core was then cut in half using a diamond brick cutting saw on 1m intervals. Typically, the core was sampled to geological intervals as defined by the geologist within the even two metre sample intervals utilised. The right-hand side of the core was always submitted for analysis with the left side being stored in trays on site.</p> <p>Diamond core was logged both for geological and mineralised structures. The core was then cut in half using a diamond brick cutting saw on 1m intervals. Typically, the core was sampled to geological intervals as defined by the geologist within the even two metre sample intervals utilised. The right-hand side of the core was always submitted for analysis with the left side being stored in trays on site.</p> <p>All data is sourced from 2025 drilling which implemented industry and best practice QAQC program, to provide verification of the sample procedure, the sample preparation and the analytical precision and accuracy of the primary laboratory.</p> <p>Sampling and QAQC procedures were carried out to industry standards.</p> <p>Sample preparation was completed by independent international accredited laboratories. Following cutting or splitting, the samples were bagged by the independent lab in Namibia and then sent to the Jin Ning</p>

personal use only

Criteria	JORC Code explanation	Commentary
		Lab in Western Australia (a NATA accredited Australian lab) for preparation and assaying.
Drilling techniques	<i>Drill type (e.g. core, reverse circulation, open-hole hammer, rotary air blast, auger, Bangka, sonic, etc.) and details (e.g. core diameter, triple or standard tube, depth of diamond tails, face-sampling bit or other type, whether core is oriented and if so, by what method, etc.).</i>	All drilling was completed by industry standard triple tube diamond drilling.
Drill sample recovery	<p><i>Method of recording and assessing core and chip sample recoveries and results assessed.</i></p> <p><i>Measures taken to maximise sample recovery and ensure representative nature of the samples.</i></p> <p><i>Whether a relationship exists between sample recovery and grade and whether sample bias may have occurred due to preferential loss/gain of fine/coarse material.</i></p>	<p>All 2025 holes have recoveries above 95% in the majority of the mineralised areas.</p> <p>No relationship exists between sample recovery and grade</p>
Logging	<p><i>Whether core and chip samples have been geologically and geotechnically logged to a level of detail to support appropriate Mineral Resource estimation, mining studies and metallurgical studies.</i></p> <p><i>Whether logging is qualitative or quantitative in nature. Core (or costean, channel, etc.) photography.</i></p> <p><i>The total length and percentage of the relevant intersections logged.</i></p>	<p>All drillholes are logged and stored at a. All core (100%) is logged in detail. Geology logging is qualitative.</p> <p>The digitised logs of the drill programme is appropriate to inform geological interpretation of the results.</p> <p>Photography and recovery measurements were carried out by assistants under a geologist's supervision.</p> <p>All drill holes were logged in full.</p> <p>Logging was qualitative and quantitative in nature.</p>

personal use only

Criteria	JORC Code explanation	Commentary
Subsampling techniques and sample preparation	<p><i>If core, whether cut or sawn and whether quarter, half or all core taken.</i></p> <p><i>If non-core, whether riffled, tube sampled, rotary split, etc and whether sampled wet or dry.</i></p> <p><i>For all sample types, the nature, quality, and appropriateness of the sample preparation technique.</i></p> <p><i>Quality control procedures adopted for all subsampling stages to maximise representivity of samples.</i></p> <p><i>Measures taken to ensure that the sampling is representative of the in-situ material collected, including for instance results for field duplicate/second-half sampling.</i></p> <p><i>Whether sample sizes are appropriate to the grain size of the material being sampled.</i></p>	<p>NTW core was cut in half using a core saw. Typically, the core was sampled to major geological intervals as defined by the geologist initially within the even 1m. All samples were collected from the same side of the core.</p> <p>Sampling of diamond core used industry standard techniques. After drying the sample is subject to a primary crush to 2mm. Sample is split through a riffle splitter until 250gm is left (this involves 4-5 splits through the riffle splitter).</p> <p>The 250-gm sample is milled through an LM5 using a single puck to 90% <75 micron.</p> <p>Milled sample is homogenised through a matt roll with a 150gm routine sample collected using a spoon around the quadrants and sent to MSA and Intertek for analysis.</p> <p>Field QC procedures involved the use of two types of certified reference materials (1 in 20) which is certified by Geostats Ltd,</p> <p>Primary DD duplicate: Generated by cutting the remaining half core into a ¼ and sampled.</p> <p>Coarse blank samples: Inserted 1 in every 20 samples</p> <p>Sample sizes are considered appropriate to cover the variation in textures from aphanitic to porphyritic to minimise any grainsize bias with larger NTW core used and the prep sample being sufficiently large to overcome textural bias.</p>
Quality of assay data and	<p><i>The nature, quality and appropriateness of the assaying and laboratory procedures used and whether the technique is considered partial or total.</i></p>	<p>The NB Nambian Lab completed the sample preparation including crushing and pulverisation after drying at 80deg</p>

personal use only

Criteria	JORC Code explanation	Commentary
<p>laboratory tests</p>	<p><i>For geophysical tools, spectrometers, handheld XRF instruments, etc, the parameters used in determining the analysis including instrument make and model, reading times, calibrations factors applied and their derivation, etc.</i></p> <p><i>Nature of quality control procedures adopted (e.g. standards, blanks, duplicates, external laboratory checks) and whether acceptable levels of accuracy (i.e. lack of bias) and precision have been established.</i></p>	<p>C. Subsequently these samples are sent to the Australian Lab (Jinning Testing and Inspection) in China for analysis.</p> <p>Due to the refraction nature of REE's a Fusion technique was used for all analyses.</p> <p>The samples were fused in a furnace (~650°C.) with Sodium Peroxide in a nickel crucible. The melt is dissolved in dilute Hydrochloric acid and the solution analysed. This technique provides almost complete dissolution of most minerals including silicates with the elements finished by ICP_OES for majors and ICP-MS for trace elements.</p> <p>A definitive QAQC program was implemented to provide verification of the sample procedure, the sample preparation and the analytical precision and accuracy of the primary laboratory, which includes the following:</p> <p>Certified Reference Material (CRM) samples: 2 (two) types of standards sourced from OREAS Ltd. were inserted 1 in every 20 samples</p> <p>Coarse blank samples: Inserted 1 in every 20 samples to monitor cross contamination</p> <p>A blank sample and crusher and pulp duplicate sample were inserted for every hole. The laboratory also inserted QAQC samples, including laboratory standards and CRMs.</p> <p>Overall, 12.5% of the samples submitted to the primary assay lab were QAQC samples. The QAQC</p>

personal use only

Criteria	JORC Code explanation	Commentary
		<p>procedures undertaken show that returned results are within acceptable limits.</p> <p>Results are considered as acceptable by the Competent Person and the drill samples are considered to be suitable for reporting of exploration results.</p>
Verification of sampling and assaying	<p><i>The verification of significant intersections by either independent or alternative company personnel.</i></p> <p><i>The use of twinned holes.</i></p> <p><i>Documentation of primary data, data entry procedures, data verification, data storage (physical and electronic) protocols.</i></p> <p><i>Discuss any adjustment to assay data.</i></p>	<p>Geological logs are digitally entered into data entry templates in MS Excel.</p> <p>Assay certificates were received from the NATA approved analytical laboratories and imported into the drill database.</p> <p>No adjustments have been made to the data other than conversion to oxides using standard stoichiometry conversion factors.</p>
Location of data points	<p><i>Accuracy and quality of surveys used to locate drillholes (collar and downhole surveys), trenches, mine workings and other locations used in Mineral Resource estimation.</i></p> <p><i>Specification of the grid system used.</i></p> <p><i>Quality and adequacy of topographic control.</i></p>	<p>Diamond drilling collar data have been located with high precision total survey. The resultant locations are appropriate for an exploration project.</p> <p>Down-hole surveying of dip and azimuth (true) for diamond holes was conducted using an 'Axis' a reflex camera.</p>
Data spacing and distribution	<p><i>Data spacing for reporting of Exploration Results.</i></p> <p><i>Whether the data spacing and distribution is sufficient to establish the degree of geological and grade continuity appropriate for the Mineral Resource and Ore Reserve estimation procedure(s) and classifications applied.</i></p> <p><i>Whether sample compositing has been applied.</i></p>	<p>With only limited holes completed this is not relevant</p> <p>Sample compositing was not carried out.</p>

personal use only

Criteria	JORC Code explanation	Commentary
Orientation of data in relation to geological structure	<p><i>Whether the orientation of sampling achieves unbiased sampling of possible structures and the extent to which this is known, considering the deposit type.</i></p> <p><i>If the relationship between the drilling orientation and the orientation of key mineralised structures is considered to have introduced a sampling bias, this should be assessed and reported if material.</i></p>	At this stage of early-stage exploration this is not understood in detail, however information does not suggest there is not relationship.
Sample security	<i>The measures taken to ensure sample security.</i>	<p>Half core was secured, covered and transported to the NB Namibia lab for core cutting facility securely bagged, A pulp fraction was sent to the Australian Lab for assay.</p> <p>All transport was overseen by either company staff, to the initial sample prep lab, and subsequently by independent personnel.</p>
Audits or reviews	<i>The results of any audits or reviews of sampling techniques and data.</i>	No audits or reviews of sampling techniques and data have been carried out.

Section 2: Reporting of Exploration Results

(Criteria listed in the preceding section also apply to this section)

Criteria	JORC Code explanation	Commentary
Mineral tenement and land tenure status	<i>Type, reference name/number, location and ownership including agreements or material issues with third parties such as joint ventures, partnerships, overriding royalties, native title interests, historical sites, wilderness or national park and environmental settings.</i>	The Competent Person is aware the Namibian Ministry of Mines and Energy approved the transfer of the Kameelburg Project's Exclusive Prospecting Licenses (EPL 7372, 7373 and 7895) from Logan Exploration & Investments CC to the Aldoro JV operating company Kameelburg Exploration Mining (Pty) Ltd.

personal use only

Criteria	JORC Code explanation	Commentary
	<i>The security of the tenure held at the time of reporting along with any known impediments to obtaining a licence to operate in the area.</i>	The Competent Person is unaware of any impediments for ongoing exploration
Exploration done by other parties	<i>Acknowledgment and appraisal of exploration by other parties.</i>	Limited exploration work has been completed by previous owners, with all rock chips previously reporting publicly.
Geology	<i>Deposit type, geological setting and style of mineralisation.</i>	<p>The mineralisation style being sought at carbonate hosted REE and Nb, associated with magnetite. The style of mineralisation is interpreted to be similar to the Niobec Sant Honore deposit in Canada.</p> <p>The Kameelburg Project is located in the northern Central Damara Orogenic Belt in Namibia and covers the Cretaceous Kameelburg Carbonatite plug and associated radial dykes intruding precursor syenites in the older host Neoproterozoic marbles and schists. The plug is approximately 1.4km in diameter and rises up to 275m above the surrounding peneplain. The intrusion consists of an initial pre-cursor phase of nepheline syenite/syenite followed by two sovite and three beforite phases with remanent rafts of volcanic breccia and syenite, the vestiges of earlier intrusive phases. The country rock consists of marbles, quartzite's, mica schists of the Damara Supergroup. Rare earth metals are known to occur in all five phases with higher concentrations in the more magnesium and iron rich beforesites.</p>
Drillhole information	<i>A summary of all information material to the understanding of the exploration results including a tabulation of the following information for all Material drillholes: easting and northing of the drillhole collar</i>	Provided in the main body of the release.

personal use only

Criteria	JORC Code explanation	Commentary
	<p><i>elevation or RL (Reduced Level – elevation above sea level in metres) of the drillhole collar</i></p> <p><i>dip and azimuth of the hole</i></p> <p><i>downhole length and interception depth</i></p> <p><i>hole length.</i></p> <p><i>If the exclusion of this information is justified on the basis that the information is not Material and this exclusion does not detract from the understanding of the report, the Competent Person should clearly explain why this is the case.</i></p>	
Data aggregation methods	<p><i>In reporting Exploration Results, weighting averaging techniques, maximum and/or minimum grade truncations (e.g. cutting of high grades) and cut-off grades are usually Material and should be stated.</i></p> <p><i>Where aggregate intercepts incorporate short lengths of high-grade results and longer lengths of low-grade results, the procedure used for such aggregation should be stated and some typical examples of such aggregations should be shown in detail.</i></p> <p><i>The assumptions used for any reporting of metal equivalent values should be clearly stated.</i></p>	<p>The exploration results are reported above using a 1% TREO cutoff grade and a 0.2% Nb₂O₅ cutoff as noted in the main body of the release.</p> <p>No weighting was applied, nor high grade cuts.</p> <p>No metal equivalents were utilised in the reporting of the exploration results.</p>
Relationship between mineralisation widths and intercept lengths	<p><i>These relationships are particularly important in the reporting of Exploration Results.</i></p> <p><i>If the geometry of the mineralisation with respect to the drillhole angle is known, its nature should be reported.</i></p> <p><i>If it is not known and only the downhole lengths are reported, there should be a clear statement to this effect (e.g. 'downhole length, true width not known').</i></p>	<p>No relationship has been established at present due to the early stage of exploration.</p> <p>With additional exploration this will be reviewed.</p> <p>All widths are downhole with the true widths not reported.</p>
Diagrams	<p><i>Appropriate maps and sections (with scales) and tabulations of intercepts should be included for any</i></p>	<p>Maps and sections in body of text</p>

personal use only

Criteria	JORC Code explanation	Commentary
	<i>significant discovery being reported These should include, but not be limited to a plan view of drillhole collar locations and appropriate sectional views.</i>	
Balanced reporting	<i>Where comprehensive reporting of all Exploration Results is not practicable, representative reporting of both low and high grades and/or widths should be practiced to avoid misleading reporting of Exploration Results.</i>	Only pertinent results are included given the scope this announcement
Other substantive exploration data	<i>Other exploration data, if meaningful and material, should be reported including (but not limited to): geological observations; geophysical survey results; geochemical survey results; bulk samples – size and method of treatment; metallurgical test results; bulk density, groundwater, geotechnical and rock characteristics; potential deleterious or contaminating substances.</i>	No material information has been withheld for the project.
Further work	<i>The nature and scale of planned further work (e.g. tests for lateral extensions or depth extensions or large-scale step-out drilling). Diagrams clearly highlighting the areas of possible extensions, including the main geological interpretations and future drilling areas, provided this information is not commercially sensitive.</i>	The continuation of drilling programme is planned as per the drill collar table presented in this report. The drilling programme is designed to contribute towards the maiden mineral resources report. Diagrams are provided in the main body of the release.

personal use only