



# HORSESHOE METALS LIMITED

## DSO Mining Approval Granted for Horseshoe Lights Copper Project WA

- Key milestone achieved with DSO Mining Proposal Approval received from Department of Energy, Mines, Industry Regulation and Safety (DEMIRS)
- Mobilisation of operations personnel to site in early July with DSO start-up planned shortly thereafter
- Receipt of DSO Mining Approval facilitates potential for significant early cash flow this year from sales of existing high-grade copper stockpiles
- Horseshoe continues to advance discussions with several domestic and international potential copper concentrate offtake partners
- Supported by the strengthening copper price and growing demand for high-grade copper concentrates, the company expects immediate demand for its DSO product
- Site infrastructure recommissioning activities commenced early May
- As well as DSO operations, other activities to ramp-up on site with exploration and drilling campaigns planned to test new areas of interest over the coming months

Horseshoe Metals Limited (ASX: HOR) (the 'Company') is pleased to report that it has received the Direct Shipping Ore ('DSO') Mining Approval from the Department of Energy, Mines, Industry Regulation and Safety (DEMIRS) for the Company's Horseshoe Lights Copper-Gold Project (HSL) in Western Australia.

This marks a significant development, with the receipt of the DSO Mining Approval allowing Horseshoe to mobilise key work personnel to site in early July, ahead of the commencement of DSO start-up operations this quarter.

With discussions progressing favourably with several potential offtake partners, it is anticipated that demand for HSL's DSO product will be strong, allowing for potential early cash flows to be realised from the project in coming months.

In conjunction with DSO start-up, additional exploration and drilling campaigns are also being finalised for HSL and are scheduled to be undertaken this quarter.

### Horseshoe Lights Copper-Gold Project Summary

The Horseshoe Lights Copper-Gold Project is the original Cu/Au VMS discovery in the Bryah Basin and is located approx. 60 km west of DeGrussa Copper Mine owned by Sandfire Resources (ASX: SFR). Past production from Horseshoe Lights includes around **316,000 oz Au & 55 kt Cu metal** in two phases of mining, and the deposit contains a current *in situ* resource **128 kt Cu metal @ 1.0% (0.5% cut-off) and 36,000 oz Au** (refer Table 1).

#### BOARD OF DIRECTORS

Ms Kate Stoney  
*Non-Executive Director,  
Chief Financial Officer &  
Joint Company Secretary*

Mr Seldon Mart  
*Non-Executive Director*

Mr Peter Walker  
*Non-Executive Director*

Mr Josh Merriman  
*Joint Company Secretary*

#### HORSESHOE METALS LIMITED

ABN 20 123 133 166  
Level 2, 50 Kings Park Rd  
West Perth WA 6005

T: +61 8 6241 1844  
F: +61 8 6241 1811  
E: info@horseshoemetals.com.au

www.horseshoemetals.com.au

The surface materials have previously been broadly grouped as follows (Figure 1):

<b>Copper - Gold</b>	Flotation tailings, Vat 2, M15/C20 Stockpiles and North Dump
<b>Copper</b>	Subgrade, rehandle, Low-grade oxide and sulphide stockpiles
<b>Gold</b>	Gold tailings, leach vats, low grade, rehandle and ROM stockpiles

**Activities have focussed on the following potential development sequence utilising copper oxide surface materials:**

1. *Copper concentrate offtake discussions including potential for offtake funding*
2. *Scavenging of remnant coarse DSO material, bagging and transport*
3. *Heavy Media Separation of fine DSO material from select stockpiles*
4. *Small Scale Heap/Vat Leach of oxide material followed by cementation*
5. *Large Scale Heap/Vat leach of surface oxide material followed by cementation*

The above are subject to any statutory and regulatory approvals that may be required.

#### **HSL Copper Surface Materials: DSO Scavenging Coarse Material**

The copper phase of mining included early DSO copper production that has left subgrade and rehandle DSO material around the site. Areas identified and assessed as having strong DSO potential include M15, Subgrade and C20 stockpiles along with rehandle and surface pimple dumps located on the North Waste dump, Gold tailings and Southern low-grade stockpile (Figure 1 – see release dated 31 October 2023). The coarse material is easily scavenged utilising loaders and excavators equipped with sieve buckets.

Site activities are scheduled to commence in July following the mobilisation of key staff.

#### **Planned Work Campaigns and Next Steps**

The following activities are planned over the coming months as its approached DSO start-up at HSL:

- *Mobilisation of key operations personnel to support DSO operations;*
- *Commencement of DSO operations this quarter;*
- *RC drill testing of several priority copper and gold targets;*
- *Auger assisted soil geochemical sampling (Cu and Au) in areas of historic RAB drilling and extending into previously untested adjacent areas;*
- *Commence updating of HSL Scoping Study;*
- *Rock chip sampling of outcropping quartz veins and jasperoids.*

**Executive Director Kate Stoney commented:** *“Securing this approval is a critical value catalyst for Horseshoe and means we can capitalise on the favourable copper price by generating early revenue in the very near term. It marks the first step in bringing the HSL project back into production with DSO operations which will be followed by small and large scale oxide heap/vat leach and cementation. As well, given the strengthening copper price, we plan to update our last Scoping Study based on an optimised pit shell that will encompass part of the 134,000 tonnes of contained copper at HSL, and we will also undertake some additional drilling this quarter to test new areas of interest which we are confident will define more ounces. In our view HSL is still vastly underdeveloped and underexplored now is the right time at in the cycle to unlock the project’s considerable value.”*

Updates on the above activities will be provided as they progress in the coming weeks.

For additional background on the Horseshoe Lights Project please refer to ASX releases:

12/09/2018	<i>"Exploration Update- Horseshoe Lights Project"</i>
06/08/2021	<i>"Horseshoe Lights Exploration Activities Update"</i>
10/09/2021	<i>"Horseshoe Lights Phase 1 Auger Programme Completed"</i>
13/09/2021	<i>"Horseshoe Lights Phase 1 RC Drilling Programme Completed"</i>
29/10/2021	<i>"Horseshoe Lights RC Drilling Results"</i>
26/11/2021	<i>"Horseshoe Lights Phase 1 Stockpile Results Received"</i>
21/02/2022	<i>"Horseshoe Metals Successful Relisting"</i>
03/03/2022	<i>"Horseshoe Lights Activities Update"</i>
11/03/2022	<i>"Horseshoe Lights Copper-Gold Resource Grade-Tonnage Review"</i>
21/04/2022	<i>"RC Drilling Underway at Horseshoe Lights Project"</i>
19/05/2022	<i>"RC Drilling Campaign Complete at HSL Project"</i>
11/08/2022	<i>"Significant Drilling Results in Copper-Gold Surface Material at Horseshoe Lights"</i>
31/08/2022	<i>"Outstanding Copper Results at Horseshoe Lights"</i>
11/10/2022	<i>"Review Confirms Broad Zones of Copper Mineralisation"</i>
27/10/2022	<i>"Broad Zones of Copper up to 8.3%"</i>
17/11/2022	<i>"RC Drilling Commences at Main Zone, Motters and North Dump"</i>
09/03/2023	<i>"Outstanding Copper Results – Main Zone and Motters at Horseshoe Lights"</i>
31/10/2023	<i>"High-Grade Surface Material Underpins DSO Strategy"</i>
24/04/2024	<i>"DSO Strategy to Accelerate Horseshoe Lights Copper Project"</i>
26/05/2025	<i>"Infrastructure Recommissioning Well Advanced at HSL"</i>

The Board of Directors of HOR has authorised this announcement to be given to the ASX.

- ENDS -

**Further information, please contact:**

*Enquiries*

**Kate Stoney**

**Non-Executive Director/  
Company Secretary**

**E: [info@horseshoemetals.com.au](mailto:info@horseshoemetals.com.au)**

**T +61 (0) 8 6241 1844**

**Sam Burns**

**Six Degrees Investor Relations**

**T +61 (0) 400 164 067**

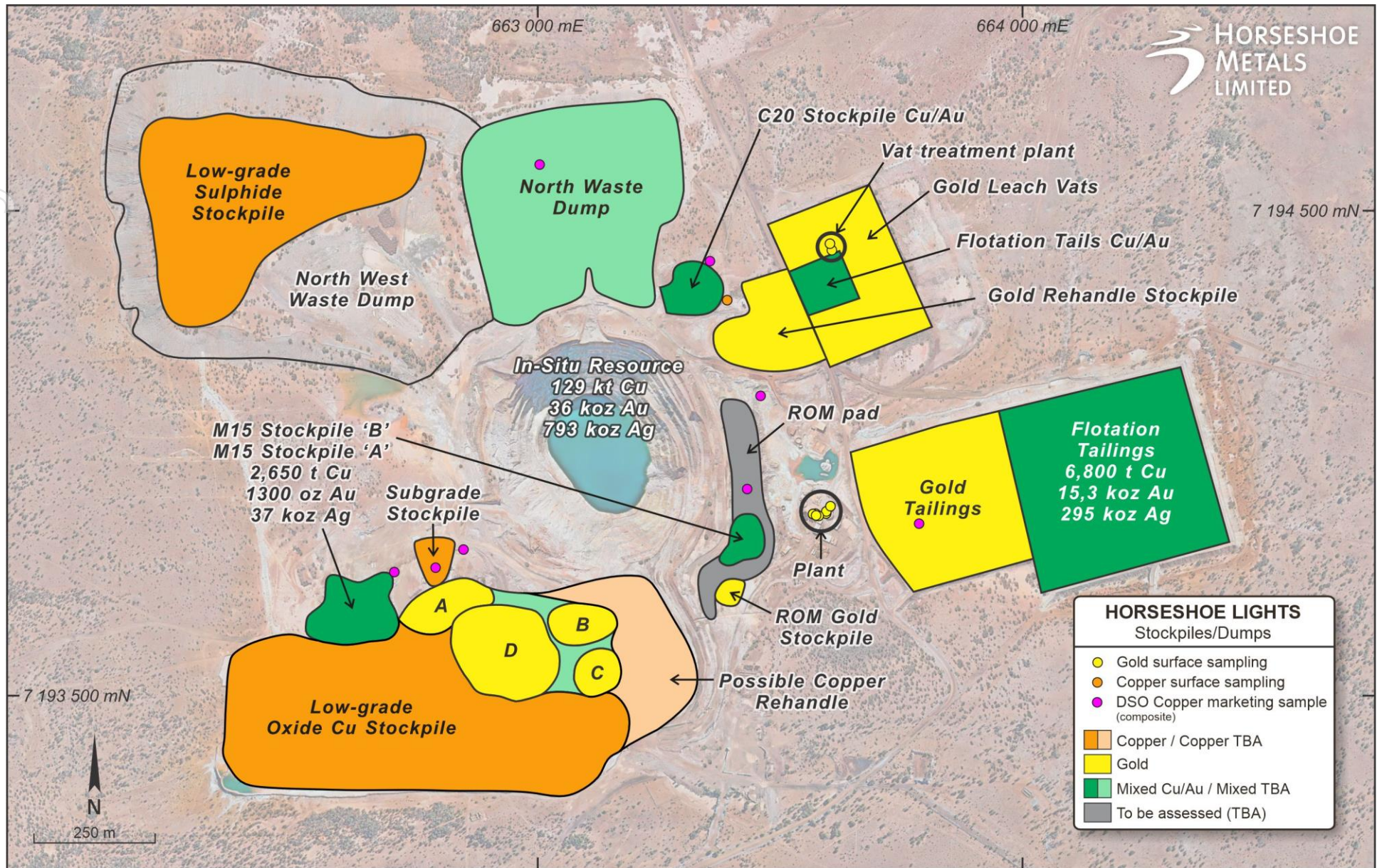


Figure 1 – Surface Stockpiles and Dumps showing Sample Locations

**About Horseshoe Metals Limited**

Horseshoe Metals Limited (ASX:HOR) is a copper and gold-focused company with a package of tenements covering approximately 500km<sup>2</sup> in the highly prospective Peak Hill Mineral Field, located north of Meekatharra in Western Australian and mineral interests in South Australia. The Company manages the Horseshoe Lights Project and the Kumarina Project in Western Australia, and the Glenloth Gold Project in South Australia.

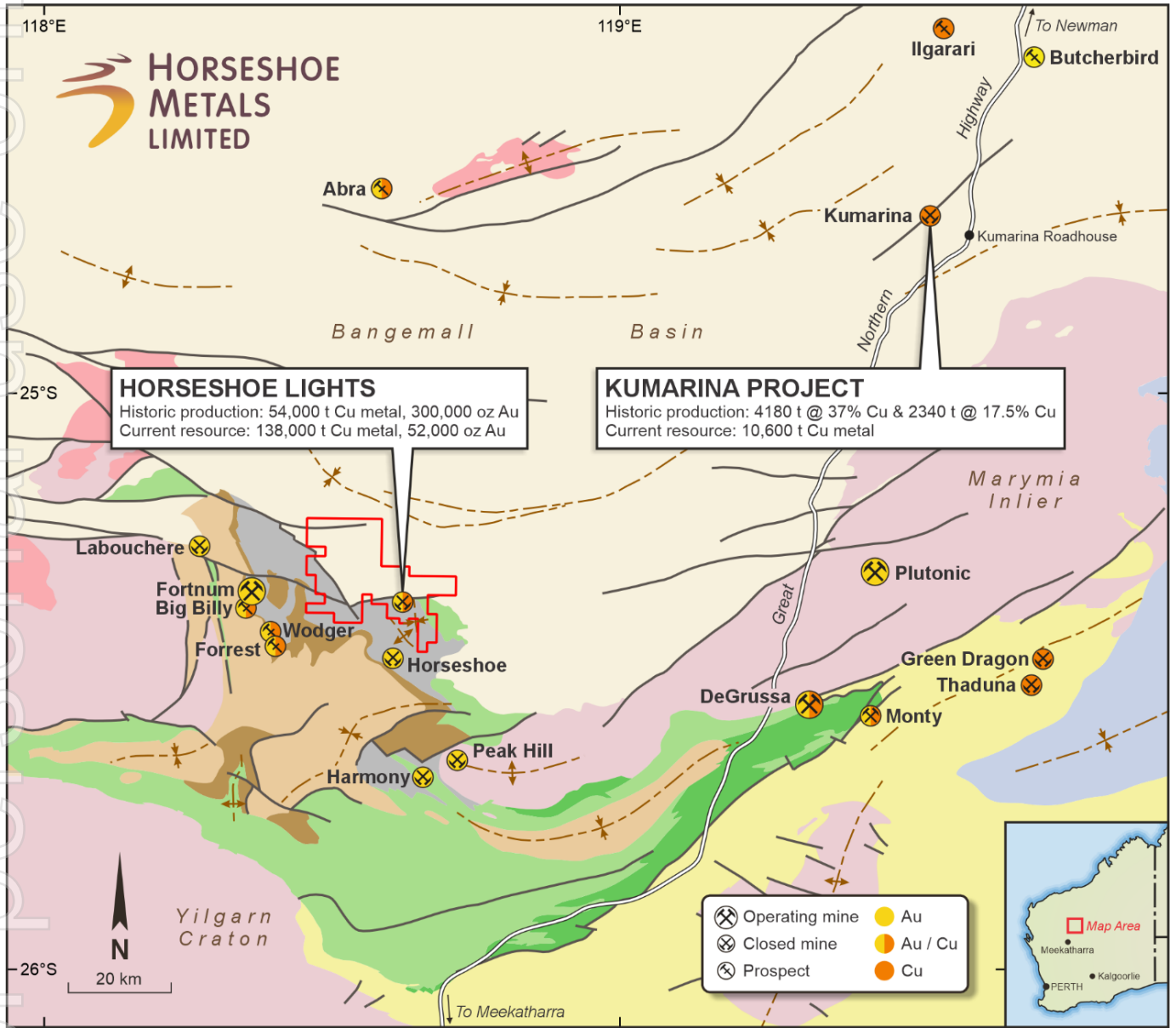


Figure 2: Location of Horseshoe Lights Copper-Gold Project and Kumarina Project in the Murchison, WA

### About the Horseshoe Lights Project

The Horseshoe Lights Project includes the historic open pit of the Horseshoe Lights copper-gold mine which operated up until 1994, producing over 300,000 ounces of gold and 54,000 tonnes of contained copper, including over 110,000 tonnes of Direct Shipping Ore (DSO) which graded between 20-30% copper.

The Horseshoe Lights ore body is interpreted as a deformed Volcanogenic Hosted Massive Sulphide (VMS) deposit that has undergone supergene alteration to generate the gold-enriched and copper-depleted cap that was the target of initial mining. The deposit is hosted by quartz-sericite and quartz-chlorite schists of the Lower Proterozoic Narracoota Formation.

Past mining was focused on the Main Zone, a series of lensoid ore zones, which passed with depth from a gold-rich oxide zone through zones of high-grade chalcocite mineralisation into massive pyrite-chalcopyrite. To the west and east of the Main Zone, copper mineralisation in the Northwest Stringer Zone and Motters Zone consists of veins and disseminations of chalcopyrite and pyrite and their upper oxide copper extensions. Table 1 summarises the total Mineral Resources for the Horseshoe Lights Project as at 30 June 2025.

Location	Category	Tonnes (Mt)	Cu (%)	Au (g/t)	Ag (g/t)	Cu metal (tonnes)	Au metal (oz)	Ag metal (k oz)	
<b>In-situ Deposit</b> (0.5% Cu cut-off grade)	<i>Measured</i>	1.73	1.04	0.0	0.5	18,000	1,900	28.8	
	<i>Indicated</i>	2.43	0.95	0.0	0.7	23,200	3,400	52.2	
	<i>Inferred</i>	8.69	1.01	0.1	2.6	87,400	30,700	712.4	
	<b>Total</b>	<b>12.85</b>	<b>1.00</b>	<b>0.1</b>	<b>1.9</b>	<b>128,600</b>	<b>36,000</b>	<b>793.4</b>	
<b>Flotation Tailings</b>	<b>Inferred</b>	<b>1.421</b>	<b>0.48</b>	<b>0.34</b>	<b>6.5</b>	<b>6,800</b>	<b>15,300</b>	<b>294.8</b>	
<b>M15 Stockpiles</b>	<b>Inferred</b>	<b>0.243</b>	<b>1.10</b>	<b>0.17</b>	<b>4.7</b>	<b>2,650</b>	<b>1,300</b>	<b>36.7</b>	
Note: At 0% Cu cut-off grade unless otherwise stated						<b>TOTAL</b>	<b>138,050</b>	<b>52,600</b>	<b>1,124.9</b>

The above Mineral Resource Estimates all meet the reporting requirements of the 2012 Edition of the "Australasian Code for Reporting of Exploration Results, Mineral Resources and Ore Reserves".

### About the Kumarina Project

The copper deposits at the Kumarina Project were discovered in 1913 and worked intermittently until 1973. The workings extend over nearly 5km as a series of pits, shafts and shallow open cuts. At the main Kumarina Copper Mine, the workings are entirely underground with drives from the main shaft extending for some 200m in the upper levels and for about 100m in the lower levels at a depth of 49m below surface.

Incomplete records post-1960s make it difficult to estimate the total copper production from the workings. However, indications are that the Kumarina Copper Mine was the second largest producer in the Bangemall Basin group of copper mines. Recorded production to the late 1960s is 481t of copper ore at a high-grade of 37.0% Cu and 2,340t at a grade of 17.51% Cu. An initial Mineral Resource Estimate for the Rinaldi deposit was completed by the Company in 2013 (see 30 June 2013 Quarterly Report announced on 31 July 2013). The total Measured, Indicated and Inferred Mineral Resource Estimate as at 30 June 2025 is shown in Table 2 below.

**TABLE 2**  
**KUMARINA PROJECT**  
**SUMMARY OF MINERAL RESOURCES**  
**AS AT 30 June 2025**

<b>Location</b>	<b>Category</b>	<b>Tonnes (t)</b>	<b>Cu (%)</b>	<b>Cu metal (tonnes)</b>
<b>Rinaldi Prospect</b> (0.5% Cu cut-off)	<i>Measured</i>	<i>415,000</i>	<i>1.46</i>	<i>6,100</i>
	<i>Indicated</i>	<i>307,000</i>	<i>1.16</i>	<i>3,500</i>
	<i>Inferred</i>	<i>114,000</i>	<i>0.9</i>	<i>1,000</i>
	<b>Total</b>	<b>835,000</b>	<b>1.3</b>	<b>10,600</b>

The Mineral Resource Estimate meets the reporting requirements of the 2012 Edition of the “Australasian Code for Reporting of Exploration Results, Mineral Resources and Ore Reserves”

### **Forward Looking Statements**

Horseshoe Metals Limited has prepared this announcement based on information available to it. No representation or warranty, express or implied, is made as to the fairness, accuracy, completeness or correctness of the information, opinions and conclusions contained in this announcement. To the maximum extent permitted by law, none of Horseshoe Metals Limited, its directors, employees or agents, advisers, nor any other person accepts any liability, including, without limitation, any liability arising from fault or negligence on the part of any of them or any other person, for any loss arising from the use of this announcement or its contents or otherwise arising in connection with it. This announcement is not an offer, invitation, solicitation or other recommendation with respect to the subscription for, purchase or sale of any security, and neither this announcement nor anything in it shall form the basis of any contract or commitment whatsoever. This announcement may contain forward-looking statements that are subject to risk factors associated with gold exploration, mining and production businesses. It is believed that the expectations reflected in these statements are reasonable but they may be affected by a variety of variables and changes in underlying assumptions which could cause actual results or trends to differ materially, including but not limited to price fluctuations, actual demand, currency fluctuations, drilling and production results, reserve estimations, loss of market, industry competition, environmental risks, physical risks, legislative, fiscal and regulatory changes, economic and financial market conditions in various countries and regions, political risks, project delay or advancement, approvals and cost estimates.

### **Competent Persons Statement**

The information in this report that relates to the Exploration Results and Mineral Resources at the Horseshoe Lights and Kumarina Projects is based on information reviewed by Mr Michael Fotios, who is a member of the Australian Institute of Mining and Metallurgy. Mr Fotios is a contractor of Horseshoe Metals Limited and has sufficient experience which is relevant to the style of mineralisation and types of deposit under consideration and to the activity he is undertaking to qualify as Competent Persons as defined in the 2012 Edition of the ‘Australasian Code for Reporting of Exploration Results, Mineral Resources and Ore Reserves (JORC Code 2012)’. Mr Fotios consents to the inclusion of the information in the form and context in which it appears.

The information in this report that relates to the Horseshoe Lights Project surface stockpile Mineral Resources is based on information compiled by a previous employee of Horseshoe Metals Limited and reviewed by Mr Fotios. The information was previously issued in announcements released to the ASX on 26 February 2015 and 9 March 2015. The Company confirms that it is not aware of any new information or data that materially affects the information included in the original market announcements. The Company confirms that the form and context in which the findings are presented have not materially modified from the original market announcements.

The information in this report that relates to the Horseshoe Lights Project In-situ Mineral Resources is based on information originally compiled by Mr Dmitry Pertel, an employee of CSA Global Pty Ltd, and reviewed by Mr Fotios. This information was originally issued in the Company’s ASX announcement “40% increase in Copper Resource at Horseshoe Lights Copper/Gold Project”, released to the ASX on 5 June 2013, and first disclosed under the JORC Code 2004. This information was subsequently disclosed under the JORC Code 2012 in the Company’s ASX release “Quarterly Report Period Ended 30 June 2013”, released on 31 July 2013. The Company confirms that it is not aware of any new information or data that materially affects the information included in the original market announcements. The Company confirms that the form and context in which the findings are presented have not materially modified from the original market announcements.

The information in this report that relates to the Kumarina Project (Rinaldi Prospect) Mineral Resources is based on information compiled by or under the supervision of Mr Robert Spiers, an independent consultant to Horseshoe Metals Limited and a then full-time employee and Director of H&S Consultants Pty Ltd (formerly Hellman & Schofield Pty Ltd), and reviewed by Mr Fotios. The information was originally issued in the Company’s ASX announcement “Horseshoe releases Maiden Mineral Resource Estimate for Kumarina”, released to the ASX on 4 March 2013, and first disclosed under the JORC Code 2004. This information was subsequently disclosed under the JORC Code 2012 in the Company’s ASX release “Quarterly Report Period Ended 30 June 2013”, released on 31 July 2013. The Company confirms that it is not aware of any new information or data that materially affects the information included in the original market announcements. The Company confirms that the form and context in which the findings are presented have not materially modified from the original market announcements.