

## Goongarrie Hub Project DFS Reaches Major Milestone

*Japanese Consortium earns 17.5% interest in KNPL  
as DFS expenditure reaches 50% milestone*

- **The Consortium has earned a combined holding in KNPL of 17.5% under the terms of the Cooperation Agreement<sup>1</sup>**
- **The Consortium has also exercised its right to appoint a director to the KNPL board**

Ardea Resources Limited (**Ardea** or the **Company**) is pleased to announce that, in accordance with the transaction documents, including the Cooperation Agreement, Sumitomo Metal Mining Co., Ltd and Mitsubishi Corporation, through its wholly owned Australian subsidiary, Mitsubishi Development Pty Ltd, have, via their joint venture company GH Nickel Pty Ltd (**the Consortium**), earned the first tranche of interest in the incorporated joint venture vehicle for the Kalgoorlie Nickel Project (**KNP**) Goongarrie Hub (the **Project**). The first tranche interest will give the Consortium a 17.5% holding in Kalgoorlie Nickel Pty Ltd (**KNPL**).<sup>1</sup>

This milestone was achieved following expenditure of 50% of the \$98.5 million Definitive Feasibility Study (**DFS**) budget. The Consortium's ownership interest in KNPL will increase to 35% upon completion of the DFS and to 50% upon the Consortium making a positive Final Investment Decision<sup>1</sup>.

The Consortium has also exercised its right to appoint a director to the KNPL board. The KNPL board now consists of Ardea's Non-Executive Chairman, Mat Longworth (KNPL Non-Executive Chairman), Ardea's Managing Director and CEO, Andrew Penkethman (KNPL Director) and a nominated Consortium representative (KNPL Director).

**Managing Director and CEO of Ardea, Andrew Penkethman, noted:**

*"The Consortium moving to a 17.5% holding in KNPL is a key event in the progress of the Goongarrie Hub DFS, and towards the eventual development of the Project. On behalf of Ardea, I would like to welcome the Consortium Nominee to the KNPL board. Mat Longworth and I look forward to working closely with them to advance both the DFS and the Project to the benefit of all KNPL owners and the wider Eastern Goldfields of Western Australia community.*

*As the Project continues to advance, we expect to be a significant contributor to the local, State and Federal economies, by developing Australia's next large-scale, long-life nickel-cobalt operation, as a major Critical Minerals collaboration between Australia and Japan. Our production will meet the high ESG standards expected from Australia and Japan and provide essential supply chain diversity and security."*

This announcement is authorised for release by the Board of Ardea Resources Limited.

**For further information regarding Ardea, please visit <https://ardearesources.com.au> or contact:**

**Andrew Penkethman**

Managing Director and Chief Executive Officer

**Mathew Collings**

General Manager, Corporate Development

Tel +61 8 6244 5136

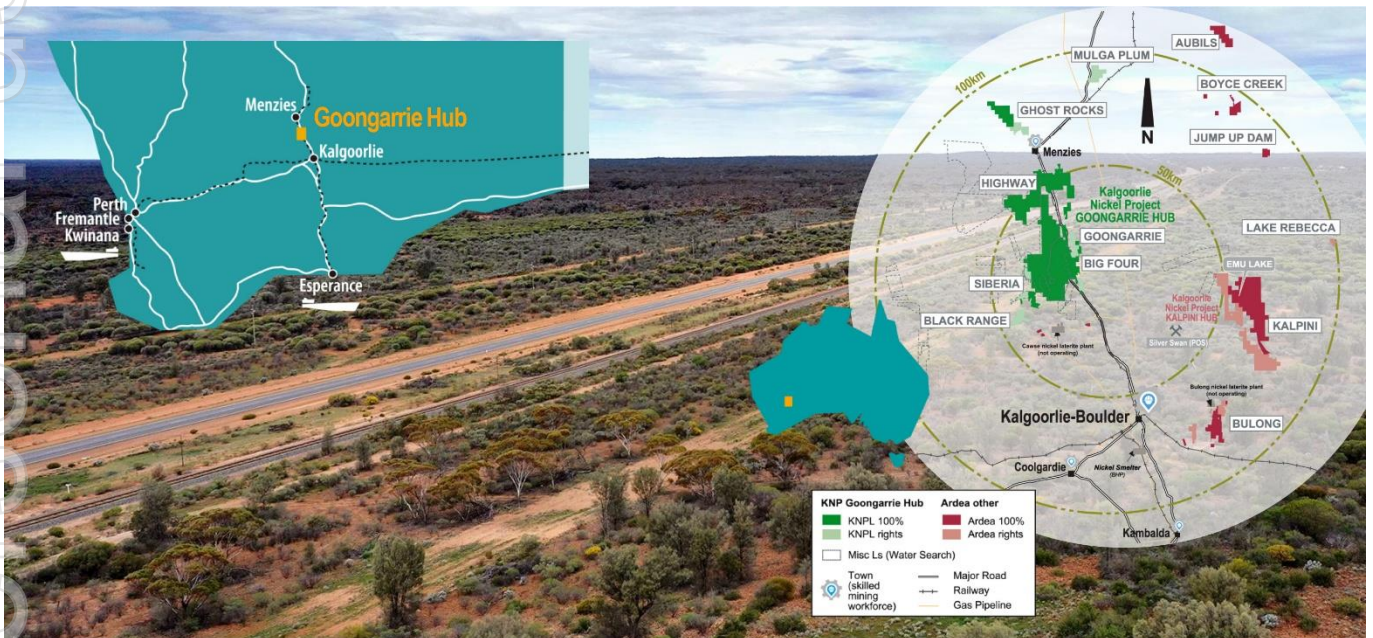
<sup>1</sup> Ardea ASX announcement 26 April 2024.



### About Ardea Resources

Ardea (ASX:ARL) is an ASX-listed nickel development company in joint venture with Sumitomo Metal Mining and Mitsubishi Corporation to build, commission and operate a plus 30,000tpa multi-decade nickel operation<sup>2</sup>:

- Development of the Kalgoorlie Nickel Project (**KNP**) and its sub-set the Goongarrie Hub, a globally significant series of nickel-cobalt and Critical Mineral deposits which host the largest nickel-cobalt resource in Australia and one of the largest in the developed World at **854Mt at 0.71% nickel and 0.045% cobalt for 6.1Mt of contained nickel and 386kt of contained cobalt**. Within the KNP, the Goongarrie Hub has 584Mt for 4.0Mt of contained nickel (Consortium right to earn 50%) and Kalpini Hub has 270Mt for 2.1Mt of contained nickel (Ardea 100% unencumbered interest)<sup>3</sup>, located in a jurisdiction with exemplary Environmental Social and Governance (**ESG**) credentials.
- Scoping Study initial programs being planned for the Kalpini Hub nickel-cobalt resources.
- Advanced-stage exploration at compelling nickel sulphide targets, such as Kalpini, and Critical Minerals targets including scandium and Rare Earth Elements throughout the KNP Eastern Goldfields world-class nickel-gold province, with all exploration targets complementing the KNP nickel development strategy.



Follow Ardea on social media



<sup>2</sup> Ardea Pre-feasibility Study ASX announcement 5 July 2023

<sup>3</sup> Ardea ASX release 30 June 2023



## CAUTIONARY NOTE REGARDING FORWARD-LOOKING INFORMATION

This news release contains forward-looking statements and forward-looking information within the meaning of applicable Australian securities laws, which are based on expectations, estimates and projections as of the date of this news release.

This forward-looking information includes, or may be based upon, without limitation, estimates, forecasts and statements as to management's expectations with respect to, among other things, the timing and amount of funding required to execute the Company's exploration, development and business plans, capital and exploration expenditures, the effect on the Company of any changes to existing legislation or policy, government regulation of mining operations, the length of time required to obtain permits, certifications and approvals, the success of exploration, development and mining activities, the geology of the Company's properties, environmental risks, the availability of labour, the focus of the Company in the future, demand and market outlook for precious metals and the prices thereof, progress in development of mineral properties, the Company's ability to raise funding privately or on a public market in the future, the Company's future growth, results of operations, performance, and business prospects and opportunities. Wherever possible, words such as "anticipate", "believe", "expect", "intend", "may" and similar expressions have been used to identify such forward-looking information. Forward-looking information is based on the opinions and estimates of management at the date the information is given, and on information available to management at such time.

Forward-looking information involves significant risks, uncertainties, assumptions, and other factors that could cause actual results, performance, or achievements to differ materially from the results discussed or implied in the forward-looking information. These factors, including, but not limited to, the ability to create and spin-out a gold focussed Company, fluctuations in currency markets, fluctuations in commodity prices, the ability of the Company to access sufficient capital on favourable terms or at all, changes in national and local government legislation, taxation, controls, regulations, political or economic developments in Australia or other countries in which the Company does business or may carry on business in the future, operational or technical difficulties in connection with exploration or development activities, employee relations, the speculative nature of mineral exploration and development, obtaining necessary licenses and permits, diminishing quantities and grades of mineral reserves, contests over title to properties, especially title to undeveloped properties, the inherent risks involved in the exploration and development of mineral properties, the uncertainties involved in interpreting drill results and other geological data, environmental hazards, industrial accidents, unusual or unexpected formations, pressures, cave-ins and flooding, limitations of insurance coverage and the possibility of project cost overruns or unanticipated costs and expenses, and should be considered carefully. Many of these uncertainties and contingencies can affect the Company's actual results and could cause actual results to differ materially from those expressed or implied in any forward-looking statements made by, or on behalf of, the Company. Prospective investors should not place undue reliance on any forward-looking information.

Although the forward-looking information contained in this news release is based upon what management believes, or believed at the time, to be reasonable assumptions, the Company cannot assure prospective purchasers that actual results will be consistent with such forward-looking information, as there may be other factors that cause results not to be as anticipated, estimated or intended, and neither the Company nor any other person assumes responsibility for the accuracy and completeness of any such forward-looking information. The Company does not undertake, and assumes no obligation, to update or revise any such forward-looking statements or forward-looking information contained herein to reflect new events or circumstances, except as may be required by law.

**No stock exchange, regulation services provider, securities commission or other regulatory authority has approved or disapproved the information contained in this news release.**

### Competent Persons statement

The Resource Estimation, exploration and industry benchmarking summaries are based on information reviewed or compiled by Mr. Ian Buchhorn, and Mr Andrew Penkethman. Mr Buchhorn is a Member of the Australasian Institute of Mining and Metallurgy and Mr Penkethman is a Fellow of the Australasian Institute of Mining and Metallurgy and a Member of the Australian Institute of Geoscientists. Both Mr Buchhorn and Mr Penkethman are full-time employees of Ardea Resources Limited and have sufficient experience, which is relevant to the style of mineralisation and type of deposit under consideration and to the activity which they are undertaking to qualify as a Competent Person as defined in the 2012 edition of the Australasian Code for Reporting of Exploration Results, Mineral Resources and Ore Reserves'. Mr Buchhorn and Mr Penkethman have reviewed this press release and consent to the inclusion in this report of the information in the form and context in which it appears. Mr Buchhorn and Mr Penkethman own Ardea shares.

Ardea wishes to clarify that its current Kalgoorlie Nickel Project (KNP) Mineral Resource Estimate (MRE) following JORC Code (2012) guidelines is:

Camp	Prospect	Resource Category	Size (Mt)	Ni (%)	Co (%)	Contained Metal	
						Ni (kt)	Co (kt)
<b>KNP TOTAL</b>		Measured	22	0.94	0.079	207	17
		Indicated	361	0.73	0.047	2,622	169
		Inferred	471	0.70	0.043	3,272	200
<b>GRAND TOTAL</b>		<b>Combined</b>	<b>854</b>	<b>0.71</b>	<b>0.045</b>	<b>6,101</b>	<b>386</b>

Note: 0.5% nickel cutoff grade used to report resources. Minor discrepancies may occur due to rounding of appropriate significant figures.

The Mineral Resource Estimate information shown in this ASX announcement has been previously released on the ASX platform by Ardea in ASX release 30 June 2023, in accordance with Listing Rule 5.8.

The Ore Reserve information shown in this ASX announcement has been previously released on the ASX platform by Ardea in ASX release 5 July 2023, in accordance with Listing Rule 5.9.

The Company confirms that it is not aware of any new information or data that materially affects the information included in the previous market announcements noted above and that all material assumptions and technical parameters underpinning the Mineral Resource Estimate and Ore Reserve in the previous market announcements continue to apply and have not materially changed. The Company confirms that the form and context in which the Competent Persons' findings are presented have not been materially modified from the original market announcements.



Updated KNP nickel and cobalt Mineral Resource Estimate based on a greater than 0.5% Ni cut-off grade, as at 30 June 2023.

Camp	Prospect	Resource Category	Size (Mt)	Ni (%)	Co (%)	Contained Metal		Estimation Details		
						Ni (kt)	Co (kt)	Method	Source	Year
<b>Goongarrie</b>	Goongarrie South	Measured	18	0.94	0.085	171	15	LUC	Ardea	2021
		Indicated	82	0.71	0.049	584	40	LUC	Ardea	2021
		Inferred	10	0.64	0.033	61	3	LUC	Ardea	2021
	Highway	Indicated	71	0.69	0.038	487	27	LUC	Ardea	2023
		Inferred	21	0.67	0.040	141	8	LUC	Ardea	2023
	Ghost Rocks	Inferred	47	0.66	0.042	312	20	OK	Snowden	2004
	Goongarrie Hill	Indicated	40	0.65	0.037	259	15	LUC	Ardea	2021
		Inferred	29	0.60	0.025	176	7	LUC	Ardea	2021
	Big Four	Indicated	49	0.71	0.047	346	23	LUC	Ardea	2021
		Inferred	14	0.68	0.043	96	6	LUC	Ardea	2021
	Scotia Dam	Indicated	12	0.71	0.065	82	7	LUC	Ardea	2021
		Inferred	5	0.72	0.043	37	2	LUC	Ardea	2021
	<b>Goongarrie Subtotal</b>	Measured	18	0.94	0.085	171	15			
		Indicated	253	0.69	0.044	1,758	112			
Inferred		127	0.65	0.037	823	47				
<b>Combined</b>		<b>398</b>	<b>0.69</b>	<b>0.044</b>	<b>2,753</b>	<b>175</b>				
<b>Siberia</b>	Siberia South	Inferred	81	0.65	0.033	525	27	OK	Snowden	2004
	Siberia North	Indicated	14	0.72	0.042	102	6	Ni(UC) Co(OK)	Snowden	2009
		Inferred	72	0.74	0.034	534	25	Ni(UC) Co(OK)	Snowden	2009
	Black Range	Indicated	9	0.67	0.090	62	8	OK	HGMC	2017
		Inferred	10	0.69	0.100	68	10	OK	HGMC	2017
	<b>Siberia Subtotal</b>	Indicated	24	0.70	0.061	165	14			
Inferred		163	0.69	0.038	1,127	61				
<b>Combined</b>		<b>186</b>	<b>0.69</b>	<b>0.040</b>	<b>1,292</b>	<b>75</b>				
<b>KNP Goongarrie Hub</b>	<b>TOTAL</b>	Measured	18	0.94	0.085	171	15			
		Indicated	277	0.70	0.046	1,923	127			
		Inferred	289	0.67	0.037	1,951	108			
		<b>Combined</b>	<b>584</b>	<b>0.69</b>	<b>0.043</b>	<b>4,044</b>	<b>250</b>			
<b>Bulong</b>	Taurus	Inferred	14	0.84	0.051	119	7	OK	Snowden	2007
	Bulong East	Indicated	16	1.06	0.055	169	9	OK	Snowden	2004
		Inferred	24	0.79	0.053	190	13	OK	Snowden	2004
	<b>Bulong Subtotal</b>	Indicated	16	1.06	0.055	169	9			
		Inferred	38	0.81	0.052	309	20			
<b>Combined</b>		<b>54</b>	<b>0.88</b>	<b>0.053</b>	<b>477</b>	<b>29</b>				
<b>Hampton</b>	Kalpini	Inferred	75	0.73	0.044	550	33	OK	Snowden	2004
	<b>Hampton Subtotal</b>	Inferred	75	0.73	0.044	550	33			
		<b>TOTAL</b>	Indicated	16	1.06	0.055	169	9		
<b>KNP Kalpini Hub</b>	<b>TOTAL</b>	Inferred	114	0.76	0.047	859	53			
		<b>Combined</b>	<b>130</b>	<b>0.79</b>	<b>0.048</b>	<b>1,028</b>	<b>62</b>			
<b>Kalpini Yerilla</b>	Jump Up Dam	Measured	4	0.94	0.048	36	2	OK	Snowden	2008
		Indicated	42	0.78	0.043	324	18	OK	Snowden	2008
		Inferred	18	0.63	0.034	116	6	OK	Snowden	2008
	Boyce Creek	Indicated	27	0.77	0.058	206	16	OK	Snowden	2009
	Aubils	Inferred	49	0.70	0.066	346	33	OK	Heron	2008
	<b>Kalpini Yerilla HubTOTAL KNP</b>	<b>TOTAL</b>	Measured	4	0.94	0.048	36	2		
Indicated			68	0.78	0.049	531	33			
Inferred			68	0.68	0.057	462	39			
<b>Combined</b>			<b>140</b>	<b>0.73</b>	<b>0.053</b>	<b>1,028</b>	<b>74</b>			
<b>KNP TOTAL</b>	<b>TOTAL</b>	Measured	22	0.94	0.079	207	17			
		Indicated	361	0.73	0.047	2,622	169			
		Inferred	471	0.70	0.043	3,272	200			
		<b>GRAND TOTAL</b>	<b>Combined</b>	<b>854</b>	<b>0.71</b>	<b>0.045</b>	<b>6,101</b>	<b>386</b>		

Legend: LUC – Local Uniform Conditioning; UC – Uniform Conditioning; OK – Ordinary Kriging.