

First Caladan Air-Core Drilling Results Demonstrate >800m

Long Mineralised Structure within the Arrakis Prospect

- **First results** from the **Caladan air-core** drilling program **suggest along-strike mineralisation continuity within the Arrakis prospect** and highlight the discovery potential of the large-scale target area with:
 - **11m @ 2.1 g/t Au from 90m** in **25IWBAC023**, including
 - **7m @ 3.1 g/t Au** from 92m.
 - **12m @ 1.1g/t Au from 45m** in **25IWBAC032**, including
 - **2m @ 3.2g/t Au** from 45m and,
 - **1m @ 2.5g/t Au** from 53m.
 - **12m @ 0.5g/t from 70m to EOH** in **25IWBAC032**, including
 - **1m @ 2.0g/t Au** from 74m.
- Mineralisation at the **Arrakis Prospect** has now been intercepted **over more than 800m of strike** and **remains open to the southeast and northwest** within the broader northwest-trending, **3km long Arrakis regolith anomaly**.
- Mineralisation is **hosted within a northwest striking shear zone** and displays similar geological characteristics across the three 400m-spaced drill lines, **suggesting a single mineralised structure may be present**.
- **The Caladan air-core program is ongoing** with 10,200m (100 holes) of a designed 12,500m (125 holes) now drilled, with **completion expected within the next two weeks**.
- Results for the first 16 holes have been received to date, with **further results from the 125-hole program forthcoming over the coming weeks and months**.

For further information or to ask questions in relation to this announcement, please visit our Investor Hub at <https://investorhub.yandalresources.com.au/link/OPQABP>

Contact Us

A: Suite 1, Level 3, 1138 Hay Street,
West Perth WA 6005
T: +61 (0)8 9389 9021
E: yandal@yandalresources.com.au
yandalresources.com.au | **ASX:YRL**

Board and Management

Chris Oorschot	Managing Director/CEO
Greg Evans	Non-Exec Chair
Katina Law	Non-Exec Director
Greg Fitzgerald	Company Secretary

Commenting on the new results, Yandal Resources' Managing Director, Mr. Chris Oorschot, said: *"To intercept mineralisation of this tenure within a first pass air-core drilling across three consecutive 400m spaced lines is a significant early-stage success, which should not be understated. We are also observing very similar geology associated with mineralisation across all three lines, suggesting we may be dealing with a single continuous mineralised structure. From a targeting perspective, the results add strength to the thesis that the more than 3 km long low-level regolith gold anomaly that defines the Arrakis prospect reflects a primary mineralised structure at depth. These results significantly de-risk the Arrakis Prospect and broader Caladan target area from a geological perspective. The current air-core program is testing the full length of the Arrakis Prospect; there is ample opportunity for further positive results ahead of us as the Company continues its pursuit of a large-scale gold discovery within the Yandal Greenstone Belt."*

Yandal Resources Ltd (ASX: YRL, "Yandal Resources" or the "Company") is pleased to report the first round of assay results from the **large-scale Caladan air-core (AC) drilling program** that commenced in early June (see **Tables 2 and 3**). Fire assay **results from 16 AC holes** (1,685m of drilling) have been received and reported within this release. The **ongoing AC program** will see drilling completed across **ten lines**, for a planned **12,500m of drilling**, testing the **Caladan target area** over **6.4km of strike** (See **Figure 4**). To date, **100 AC holes have been drilled** (for 10,200m of drilling), with a further **25 holes remaining**. Lines are **800m spaced** with **two 400m spaced lines** along strike to the north and south of previous drilling completed across the **Arrakis Prospect** earlier this year. The **Caladan** target area, including the **Arrakis Prospect** (within E 53/1843, E 53/2304, E 53/2192 and E 53/1882), is part of the broader **Ironstone Well-Barwidgee Gold Project** (see **Figure 4**), located **60km south** of the **Jundee** mining complex (ASX: NST), and **18km north of the recent Siona discovery**, within the Yandal Greenstone Belt.

The **first round of AC results delivers several significant intercepts** that demonstrate the **mineralised structure** intercepted in AC drilling completed in late 2024 (See **ASX release 15 January 2025**) is potentially **continuous along more than 800m of strike** and **remains open to the northwest and southeast**. Across all three lines, **mineralisation is hosted within sheared and altered dolerite**. These first results, when combined with geological observations, provide **strong evidence that the 3km long, low-level regolith anomaly** that defined the Arrakis Prospect (See **ASX release 15 July 2024**) reflects **a primary mineralised structure at depth**. Importantly, AC drilling has already tested the full extent of this regolith anomaly, with **results anticipated over the coming weeks and months**.

Caladan Air-Core Results

Air-core results from **16 holes** (1,685m) drilled across **four separate drill lines** have been received. All results and drilling details are provided in **Tables 2 and 3**. Results include **several significant intercepts from the Arrakis Prospect** within the Caladan target area, including:

- **11m @ 2.1 g/t Au from 90m in 25IWBAC023**, including
 - **7m @ 3.1 g/t Au** from 92m.

25IWBAC023 is located **400m northwest** of the single line of drilling completed in late 2024 and early 2025 (see **Figures 1 and 3**) that included previously reported intercepts of **11m @ 1.7g/t Au from 97m to EOH** in **24IWBAC063** and **11m @ 0.5 g/t Au from 168m in 25AKSL003**. The intercepted gold mineralisation from **25IWBAC023** occurs in moderately weathered rock. The intercept is characterised by sheared dolerite displaying strong silica-seriite alteration and disseminated pyrite and arsenopyrite. Minor quartz +/- sulphide veining has also been observed within the interval. Drilling to the southeast indicates gold **mineralisation typically occurs as two zones** on the boundaries of the interpreted shear zone. With **25IWBAC023** only intercepting one mineralised interval, there is potential for a second mineralised interval at depth (see **Figure 1**).

AC results **400m southeast** (see **Figures 2 and 3**) of the single line of drilling completed in late 2024 and early 2025 returned two significant intercepts:

- **12m @ 1.1g/t Au from 45m in 25IWBAC032**, including
 - **2m @ 3.2g/t Au** from 45m and,
 - **1m @ 2.5g/t Au** from 53m.
- **12m @ 0.5g/t from 70m to EOH in 25IWBAC032**, including
 - **1m @ 2.0g/t Au** from 74m.

The upper intercept in **25IWBAC032** (See **Figure 2**) occurs in strongly weathered rock. The lower intercept occurs in moderately to weakly weathered rock. Similar to AC hole **25IWBAC023**, mineralisation is characterised by sheared and altered dolerite. The occurrence of two mineralised zones is comparable to mineralisation observed in the previously reported **24IWBAC063** and **25AKSL003**.

Three 400m space drill lines have each intercepted a comparable mineralised structure (see **Figure 3**). These intercepts are **aligned along strike** and are **associated with the eastern edge of the northwest-trending 3km long Arrakis low-level gold regolith anomaly**. The strong correlation between the Arrakis regolith anomaly and these results suggests the identified **mineralised structure likely extends well beyond the current extent of AC results**. Importantly, these extents have or will be drilled as part of the current program, with more results expected over the coming weeks and months.

Next Steps

AC drilling is ongoing across Caladan, with approximately 25 holes remaining to be drilled as part of the current program. Drilling is scheduled to be completed in approximately two weeks. In addition to this, **samples from a further 84 holes** have been dispatched to or received by the lab. Further assay results, including drilling completed adjacent to and along strike of **25IWBAC023** and **25IWBAC032**, are expected to be released in the coming weeks.

Follow-up exploration programs are being considered; however, the Company will await further results before finalising plans and a schedule. The AC rig is currently scheduled to mobilise to the New England Granite Prospect to test several large-scale structural targets (See **ASX release 25 May 2025**) once the Caladan program is complete.

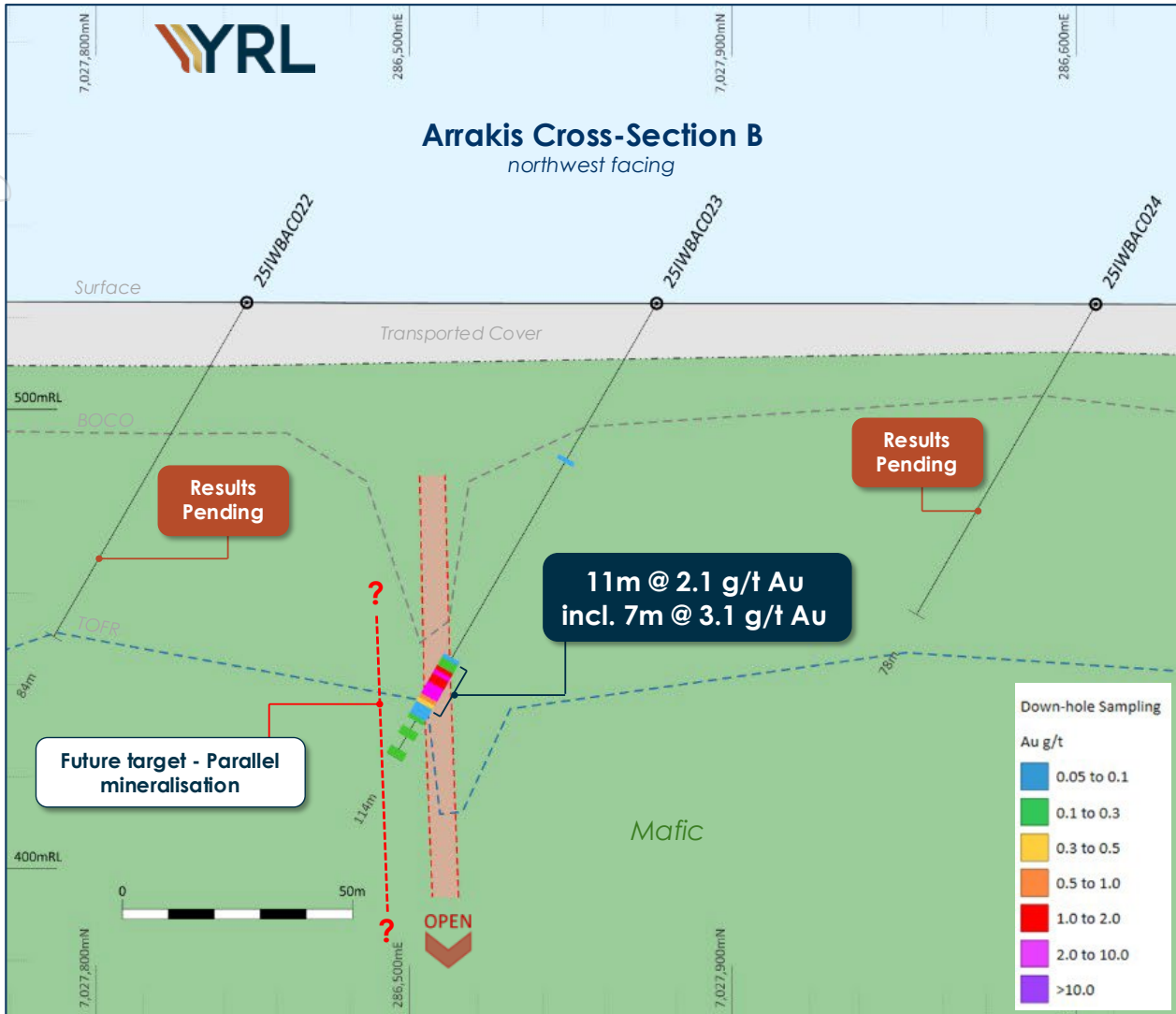


Figure 2: Cross-section showing all AC drilling results from **25IWBA023**, with a simple preliminary interpretation of geology. The section location is shown in **Figure 3**. The section shows all drilling within +/- 50m of the section plane. The red line represents a potential future drill target, based on geological observation from intercepts 400m and 800m to the southeast. Please note that assay results from drilling adjacent to 25IWBA023 have not yet been received and are expected in the coming weeks.

For personal use only

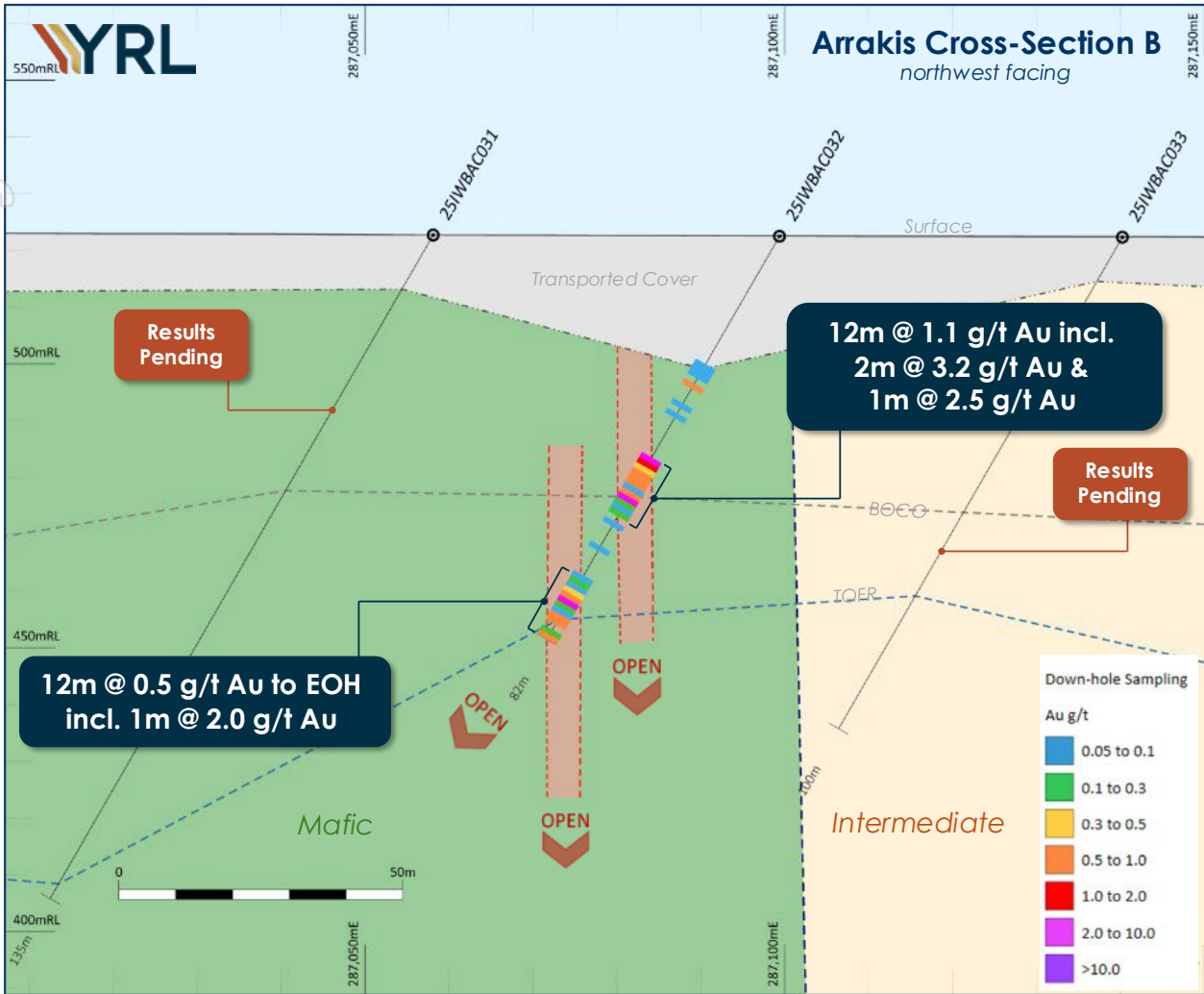


Figure 3: Cross-section showing all AC drilling results from **25IWBA032**, with a simple preliminary interpretation of geology. The section location is shown in **Figure 3**. The section shows all drilling within +/- 50m of the section plane. Please note that assay results from drilling adjacent to 25IWBA023 have not yet been received and are expected in the coming weeks.

For personal use only

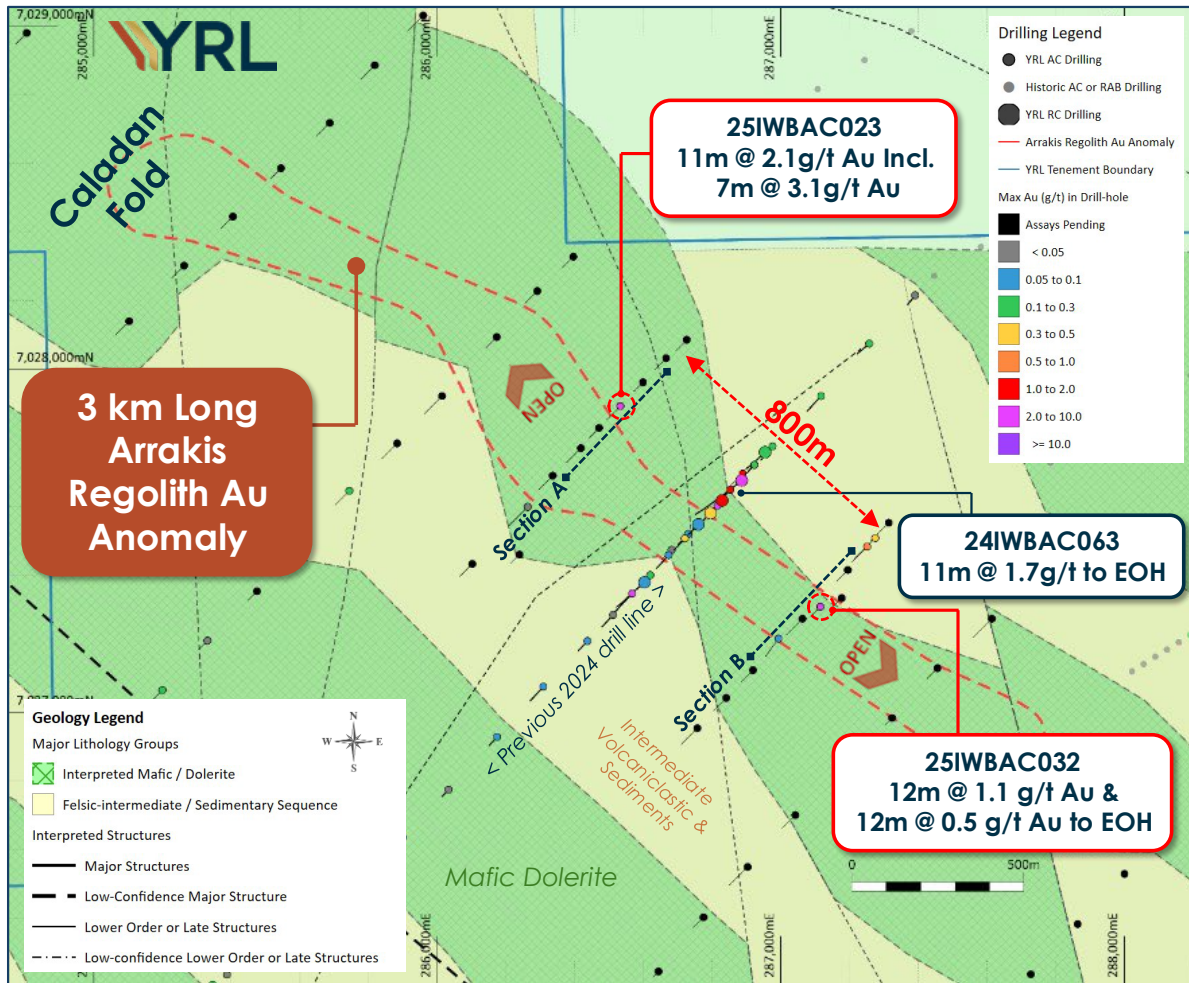


Figure 3: A collar plan over the Arrakis Prospect within the Caladan target area (See Figure 4), showing simplified bedrock geology interpretation. The location of effective historic drilling (>20m depth and excluding all Eagle Mining and Hunter Resources RAB drilling from 1995) and all Yandal drilling is plotted. Collars are thematically coloured by max Au (g/t) in the hole. Please note that **collars coloured black represent holes that have been drilled with assays yet to be received.**

For personal use only

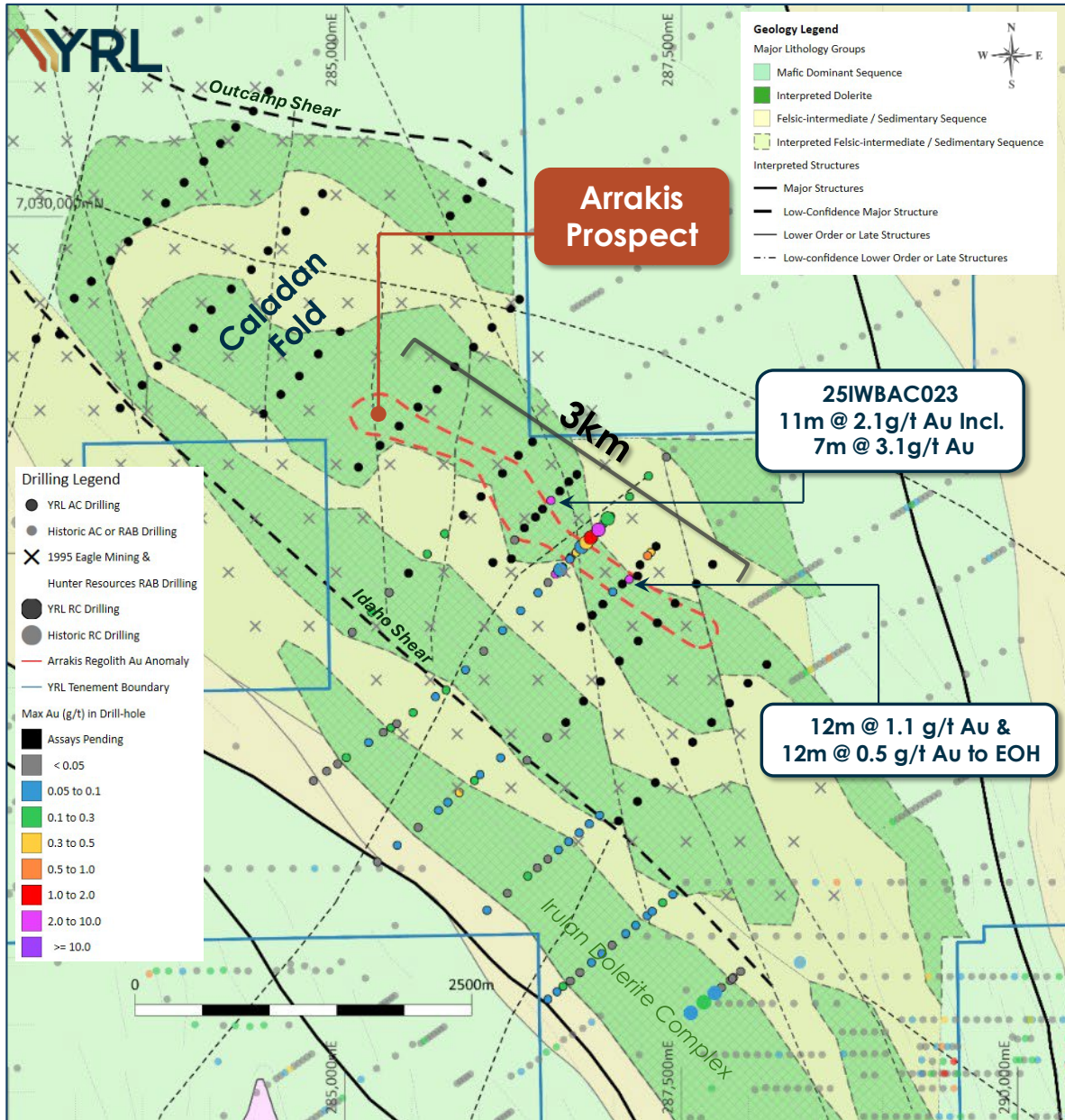


Figure 4: A collar plan over the Caladan target area, showing simplified bedrock geology interpretation across the Caladan and northern Irulan target areas within the IWB Gold Project. The collars of YRL drilling, the historic 1995 RAB drilling, and all historic drilling >20m in depth are plotted. All collars are thematically coloured by max Au (g/t Au). Please note that **collars coloured black represent holes that have been drilled with assays yet to be received.**

For personal use only

Caladan Target Area Overview

The **Caladan** target area presents a large-scale northwest plunging (interpreted) fold, truncated by the **Idaho Shear** to the southwest. The **Idaho Shear** is interpreted as a second-order structure linking the **Ockerburry Shear Zone** to the east and the **Barwidgee Shear Zone** to the west (see **Figure 3**). The only systematic drilling across the fold structure was completed in 1995 (see **ASX release 15 July 2024**), where shallow (average depth of 22m) vertical RAB holes on a 400m by 400m spacing were completed. The drilling was designed to penetrate through shallow transported cover (2-20m deep) and sample in-situ upper saprolite clays. A review of this drilling yielded several low-level in-situ saprolite anomalies, the largest of which (the **3km long CAL-01** anomaly) is **situated in the core of the Caladan Fold** and now defines the Arrakis Prospect (see **Figure 1** above).

The **Caladan Fold** structure is **3km wide, over 8km long**, and lies under loose to well-cemented transported cover (the average depth of transported cover is 8m). The broad structural setting is similar to the Kalgoorlie district, where the Boulder-Lefroy Fault truncates the folded mafic stratigraphy of the Boomerang anticline (see **Figure 5**).

A single line of air-core **drilling completed in 2024** (see **ASX release 15 January 2025**) has confirmed:

- **Strong gold depletion** in the upper portion of the regolith profile;
- The 3km long **CAL-01 anomaly is likely associated with primary mineralisation** hosted within a deformed and altered mafic unit;
- **Gravity highs coincide with fractionated dolerites**, separated by a sequence dominated by variably altered intermediate (andesite) volcanoclastics.

Follow-up **RC drilling completed in early 2025** (see **ASX release 30 April 2025**) suggests:

- **Primary gold mineralisation is present** on the margins of a sub-vertical 20-30m wide shear zone hosted within a mafic unit (basalt and dolerite);
- There is potential for **multiple mineralised structures**, with several remaining untested in fresh rock.

The under-explored nature of the Caladan Fold, combined with several low-level regolith anomalies, resulted in the Caladan target area being ranked as **one of the highest priority target areas within the Company's project portfolio**. Recent drilling results combined with observed geology have reaffirmed the Company's prioritisation of the **Caladan target area within the exploration strategy**.

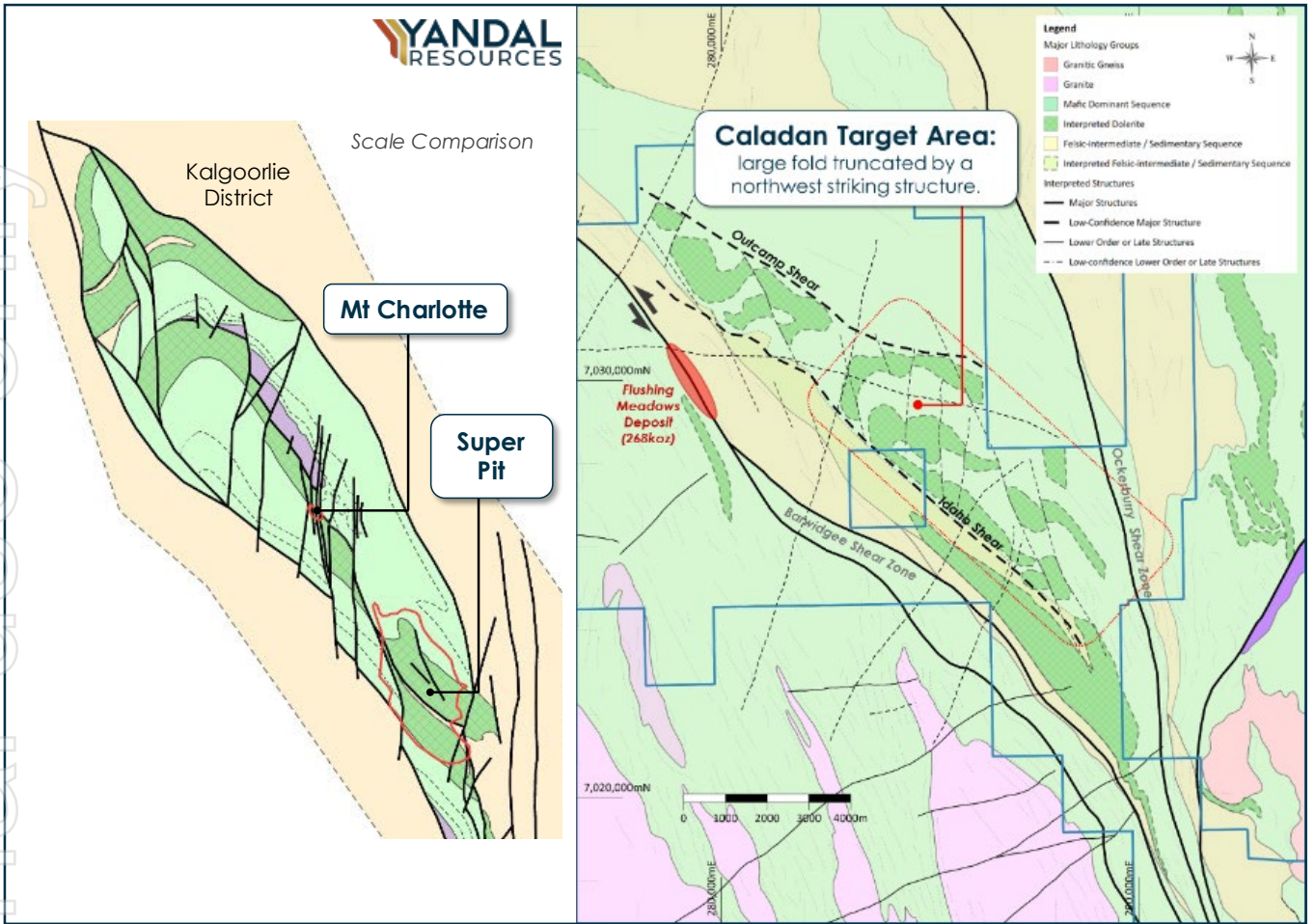


Figure 5: A scale comparison of the Caladan Fold (target area) and the Kalgoorlie district, showing simplified bedrock geology interpretations. Kalgoorlie interpreted geology adapted from N.M. Vielreicher, D.I. Groves, N.J. McNaughton. 2016. The giant Kalgoorlie Goldfield revisited. *Geoscience Frontiers*, volume 7, pp. 359-374.

Looking Ahead

The Company maintains a robust cash position and a very active exploration schedule for the second half of 2025. Notable near-term activities and news flow include;

1. Completion of the large-scale **12,500m Caladan AC program** in approximately two weeks;
2. Further AC drilling results from **Caladan** are anticipated in the coming weeks and months;
3. An **AC drilling program** across the **New England Granite** is scheduled to commence following the completion of AC drilling across the Caladan target area.

Authorised by the board of Yandal Resources

For further information, please contact:

Chris Oorschot

Managing Director

Yandal Resources Limited

yandal@yandalresources.com.au

Greg Fitzgerald

Company Secretary

+61 8 9389 9021

yandal@yandalresources.com.au

About Yandal Resources Limited

Yandal Resources has a portfolio of advanced gold exploration projects in the highly prospective Yandal and Norseman-Wiluna Greenstone Belts of Western Australia.

For personal use only

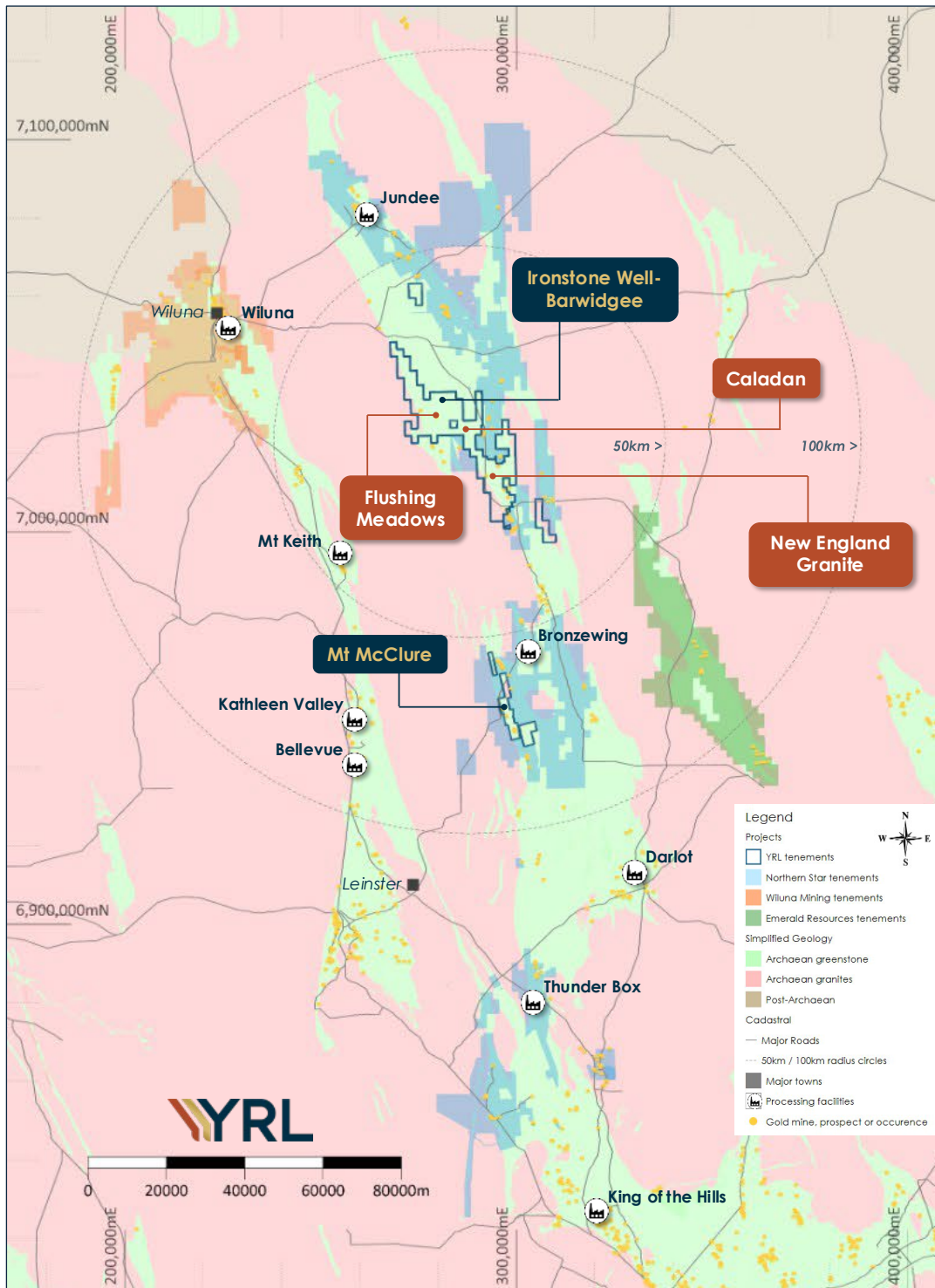


Figure 4: Yandal Resource exploration Project locations within the Yandal Greenstone Belt.

Table 1 – Yandal Resources Ltd - Mineral Resource Summary

Deposit	Indicated			Inferred			Total		
	Tonnes ('000s)	Grade (g/t)	Au (oz)	Tonnes ('000)	Grade (g/t)	Au (oz)	Tonnes ('000's)	Grade (g/t)	Au (Oz)
Ironstone Well									
Flushing Meadows ¹	2,141	1.3	91,000	5,245	1.1	177,000	7,386	1.1	268,000
Mt McClure									
Challenger ²				718	1.9	44,000	718	1.9	44,000
Success ³				1,255	1.9	75,000	1,255	1.9	75,000
Parmelia ⁴				252	2.1	17,000	252	2.1	17,000
HMS Sulphur ⁵				1010	1.2	39,000	1010	1.2	39,000
Gilmore ⁶				134	1.7	7,200	134	1.7	7,200
Sub-total - MMC				3,369	1.7	182,200	3,369	1.7	182,200
Gordons									
Gordons Dam ⁷				365	1.7	20,000	365	1.7	20,000
Grand-total⁸	2,141	1.3	91,000	8,979	1.3	379,200	11,120	1.4	470,200

Due to the effects of rounding, totals may not represent the sum of the individual components.

1. Reported above 0.5g/t Au lower cut-off grade; refer to Yandal Resources Ltd ASX announcement dated 4 November 2020 for full details. 2. Reported above 1.0g/t Au lower cut-off grade; refer to Yandal Resources Ltd ASX announcement dated 22 August 2022 for full details. 3. Reported above 1.0g/t Au lower cut-off grade; refer to Yandal Resources Ltd ASX announcement dated 6 September 2022 for full details. 4. Reported above 1.0g/t Au lower cut-off grade; refer to Yandal Resources Ltd ASX announcement dated 20 September 2022 for full details. 5. Reported above 0.5g/t Au lower cut-off grade within this announcement. 6. Reported above 1.0g/t Au lower cut-off grade within this announcement. 7. Reported above 1.0g/t Au lower cut-off grade; refer to Yandal Resources Ltd ASX announcement dated 6 April 2023 for full details. 8. All Resources are reported as global estimates, not constrained by optimised pit shells.

Competent Person Statement

The information in this document related to Exploration Targets and Exploration Results, geology and data compilation is based on information reviewed or compiled by Mr Christopher Oorschot, a Competent Person who is a Member of The Australasian Institute Geoscientists. Mr Oorschot is the Managing Director of the Company, is a full-time employee and holds shares and options in the Company. Mr Oorschot has sufficient experience which is relevant to the style of mineralisation and type of deposit under consideration and to the activity which he is undertaking to qualify as a Competent Person as defined in the 2012 Edition of the 'Australasian Code for Reporting of Exploration Results, Mineral Resources and Ore Reserves'. Mr Oorschot consents to the inclusion in this announcement of the matters based on this information in the form and context in which it appears.

The information in this announcement that relates to the Flushing Meadows, Mt McClure and Gordons Dam Mineral Resource Estimates is based on information compiled and generated by Andrew Bewsher, an employee of BM Geological Services Pty Ltd ("BMGS"). Both Andrew Bewsher and BMGS hold shares in the company. BMGS consents to the inclusion, form and context of the relevant information herein as derived from the original resource reports. Mr Bewsher has sufficient experience relevant to the style of mineralisation and type of deposit under consideration and to the activity which is being undertaken to qualify as a Competent Person as defined in the 2012 Edition of the JORC 'Australasian Code for Reporting of Exploration Results, Mineral Resources and Ore Reserves'.

YRL confirms that it is not aware of any new information or data that materially affects the information included in the original market announcement. The Company confirms that the form and context in which

the Competent Person's findings are presented have not been materially modified from the original market announcement.

Forward Looking Statements

This document may contain certain forward-looking statements. Forward-looking statements include, but are not limited to, statements concerning Yandal Resources Limited's (Yandal's) current expectations, estimates and projections about the industry in which Yandal operates, and beliefs and assumptions regarding Yandal's future performance. When used in this document, words such as "anticipate", "could", "plan", "estimate", "expects", "seeks", "intends", "may", "potential", "should", and similar expressions are forward-looking statements. Although Yandal believes that its expectations reflected in these forward-looking statements are reasonable, such statements are subject to known and unknown risks, uncertainties and other factors, some of which are beyond the control of Yandal and no assurance can be given that actual results will be consistent with these forward-looking statements. Drilling results presented indicate geological potential for mineralisation but there can be no certainty that these results will eventually form part of a Mineral Resource Estimate.

Table 2 – Caladan air-core collar location summary.

Prospect/ Target	Hole ID	Hole type	East (m)	North (m)	RL (mAHD)	Azimuth (degrees)	Dip (degrees)	Total Depth (m)
Caladan	25IWBAC001	AC	286682	7027473	523.2	225	-60	86.0
Caladan	25IWBAC002	AC	286730	7027519	523.1	225	-60	88.0
Caladan	25IWBAC003	AC	286889	7027695	522.6	225	-60	123.0
Caladan	25IWBAC004	AC	286356	7025964	530.0	225	-60	71.0
Caladan	25IWBAC005	AC	286506	7026132	528.8	225	-60	62.0
Caladan	25IWBAC006	AC	285057	7026914	528.5	225	-60	59.0
Caladan	25IWBAC007	AC	285200	7027064	527.3	225	-60	147.0
Caladan	25IWBAC008	AC	285331	7027208	526.2	225	-60	78.0
Caladan	25IWBAC009	AC	285614	7027495	525.4	225	-60	92.0
Caladan	25IWBAC010	AC	285744	7027645	525.0	225	-60	118.0
Caladan	25IWBAC011	AC	285883	7027783	524.7	225	-60	132.0
Caladan	25IWBAC012	AC	286014	7027921	523.6	225	-60	144.0
Caladan	25IWBAC013	AC	286173	7028093	523.1	225	-60	92.0
Caladan	25IWBAC014	AC	286291	7028227	522.6	225	-60	104.0
Caladan	25IWBAC015	AC	286396	7028327	522.2	225	-60	94.0
Caladan	25IWBAC016	AC	285475	7027352	525.7	225	-60	75.0
Caladan	25IWBAC017	AC	286102	7027432	524.0	225	-60	103.0
Caladan	25IWBAC018	AC	286239	7027459	523.8	225	-60	73.0
Caladan	25IWBAC019	AC	286263	7027598	523.7	225	-60	162.0
Caladan	25IWBAC020	AC	286336	7027689	523.6	225	-60	117.0
Caladan	25IWBAC021	AC	286418	7027769	523.5	225	-60	123.0
Caladan	25IWBAC022	AC	286471	7027828	523.3	225	-60	84.0
Caladan	25IWBAC023	AC	286533	7027892	523.1	225	-60	114.0
Caladan	25IWBAC024	AC	286599	7027961	522.9	225	-60	78.0
Caladan	25IWBAC025	AC	286666	7028031	522.3	225	-60	99.0
Caladan	25IWBAC026	AC	286726	7028085	522.1	225	-60	92.0
Caladan	25IWBAC027	AC	286757	7026953	524.5	225	-60	135.0

Prospect/ Target	Hole ID	Hole type	East (m)	North (m)	RL (mAHD)	Azimuth (degrees)	Dip (degrees)	Total Depth (m)
Caladan	25IWBAC028	AC	286841	7027041	524.1	225	-60	108.0
Caladan	25IWBAC029	AC	286919	7027122	523.6	225	-60	101.0
Caladan	25IWBAC030	AC	286993	7027214	523.1	216	-60	128.0
Caladan	25IWBAC031	AC	287063	7027272	522.7	225	-60	135.0
Caladan	25IWBAC032	AC	287115	7027307	522.5	225	-60	82.0
Caladan	25IWBAC033	AC	287177	7027332	522.3	225	-60	100.0
Caladan	25IWBAC034	AC	287195	7027414	522.3	225	-60	96.2
Caladan	25IWBAC035	AC	287251	7027482	522.3	225	-60	128.5
Caladan	25IWBAC036	AC	287275	7027507	522.3	225	-55	147.0
Caladan	25IWBAC037	AC	287314	7027552	522.3	225	-60	151.0
Caladan	25IWBAC038	AC	286644	7026244	527.9	225	-60	46.0
Caladan	25IWBAC039	AC	286775	7026402	526.9	225	-60	89.0
Caladan	25IWBAC040	AC	286903	7026549	526.5	225	-60	153.0
Caladan	25IWBAC041	AC	287042	7026700	525.4	225	-60	108.0
Caladan	25IWBAC042	AC	287181	7026849	524.4	225	-60	58.0
Caladan	25IWBAC043	AC	287324	7026983	524.0	225	-60	58.0
Caladan	25IWBAC044	AC	287456	7027128	523.1	225	-60	88.0
Caladan	25IWBAC045	AC	287614	7027272	522.8	225	-60	155.0
Caladan	25IWBAC046	AC	287735	7027418	522.7	225	-60	90.0
Caladan	25IWBAC047	AC	285103	7028139	525.3	225	-60	113.0
Caladan	25IWBAC048	AC	285263	7028301	524.6	225	-60	102.0
Caladan	25IWBAC049	AC	285405	7028444	524.6	225	-60	99.0
Caladan	25IWBAC050	AC	285545	7028585	524.1	225	-60	88.0
Caladan	25IWBAC051	AC	285687	7028717	523.7	225	-60	111.0
Caladan	25IWBAC052	AC	285818	7028885	523.2	225	-60	117.0
Caladan	25IWBAC053	AC	285959	7029030	522.5	225	-60	130.0
Caladan	25IWBAC054	AC	286095	7029176	522.1	225	-60	121.0
Caladan	25IWBAC055	AC	286233	7029318	521.5	225	-60	107.0
Caladan	25IWBAC056	AC	286299	7029385	521.3	225	-60	115.0
Caladan	25IWBAC057	AC	283332	7028578	531.8	225	-60	166.0
Caladan	25IWBAC058	AC	283496	7028748	530.7	225	-60	90.0
Caladan	25IWBAC059	AC	283613	7028891	530.1	225	-60	57.0
Caladan	25IWBAC060	AC	283753	7029023	528.6	225	-60	77.0
Caladan	25IWBAC061	AC	283877	7029170	528.4	225	-60	105.0
Caladan	25IWBAC062	AC	284009	7029307	527.2	225	-60	104.0
Caladan	25IWBAC063	AC	284158	7029462	526.9	225	-60	75.0
Caladan	25IWBAC064	AC	284307	7029606	525.6	225	-60	119.0
Caladan	25IWBAC065	AC	284432	7029745	524.6	225	-60	93.0
Caladan	25IWBAC066	AC	284565	7029892	523.4	225	-60	95.0
Caladan	25IWBAC067	AC	284704	7030038	523.2	225	-60	67.0
Caladan	25IWBAC068	AC	284836	7030169	522.6	225	-60	150.0
Caladan	25IWBAC069	AC	284396	7028534	526.0	225	-60	81.0
Caladan	25IWBAC070	AC	284526	7028679	525.5	225	-60	98.0
Caladan	25IWBAC071	AC	284664	7028816	525.1	225	-60	94.0
Caladan	25IWBAC072	AC	284805	7028979	524.3	225	-60	93.0
Caladan	25IWBAC073	AC	284968	7029146	523.4	225	-60	110.0

Prospect/ Target	Hole ID	Hole type	East (m)	North (m)	RL (mAHD)	Azimuth (degrees)	Dip (degrees)	Total Depth (m)
Caladan	25IWBAC074	AC	285785	7030005	521.2	225	-60	69.0
Caladan	25IWBAC075	AC	285910	7030131	520.7	225	-60	72.0
Caladan	25IWBAC076	AC	286021	7030253	520.4	225	-60	105.0
Caladan	25IWBAC077	AC	282708	7029091	537.4	225	-60	209.0
Caladan	25IWBAC078	AC	282992	7029393	533.2	225	-60	80.0
Caladan	25IWBAC079	AC	283118	7029518	531.6	225	-60	59.0
Caladan	25IWBAC080	AC	283261	7029673	530.3	225	-60	80.0
Caladan	25IWBAC081	AC	283394	7029813	529.4	225	-60	114.0
Caladan	25IWBAC082	AC	283534	7029960	528.4	225	-60	81.0
Caladan	25IWBAC083	AC	283671	7030099	528.1	225	-60	79.0
Caladan	25IWBAC084	AC	283808	7030252	526.7	225	-60	122.0
Caladan	25IWBAC085	AC	283954	7030409	525.5	225	-60	77.0
Caladan	25IWBAC086	AC	284079	7030541	525.1	225	-60	96.0
Caladan	25IWBAC087	AC	284192	7030663	523.9	225	-60	129.0
Caladan	25IWBAC088	AC	284321	7030782	523.4	225	-60	158.0
Caladan	25IWBAC089	AC	284436	7030930	523.2	225	-60	69.0
Caladan	25IWBAC090	AC	282883	7029127	535.6	225	-60	135.0
Caladan	25IWBAC091	AC	285632	7029848	521.7	225	-60	98.0
Caladan	25IWBAC092	AC	287035	7025514	532.0	225	-60	117.0
Caladan	25IWBAC093	AC	287176	7025658	530.7	225	-60	41.0
Caladan	25IWBAC094	AC	287309	7025798	529.8	225	-60	55.0
Caladan	25IWBAC095	AC	287455	7025953	528.3	225	-60	118.0
Caladan	25IWBAC096	AC	287586	7026098	527.1	225	-60	153.0
Caladan	25IWBAC097	AC	287727	7026244	525.8	225	-60	102.0
Caladan	25IWBAC098	AC	287859	7026387	525.5	225	-60	135.0
Caladan	25IWBAC099	AC	287997	7026536	525.2	225	-60	126.0
Caladan	25IWBAC100	AC	288137	7026675	525.2	225	-60	68.0

Table 3 – Caladan Target Area - Summary of significant air-core drilling assay results >0.1g/t Au with no more than 2m of continuous internal waste included unless otherwise stated. All intercept lengths are reported as down-hole lengths.

Hole ID	Sample type / Sub	From (m)	To (m)	Interval (m)	Au (g/t)	Comment
25IWBAC001	1m Sample	NSA			0	
25IWBAC002	1m Sample	NSA			0	
25IWBAC003	1m Sample	60	64	4	0.8	Completely weathered
25IWBAC003	1m Sample	74	76	2	0.4	Completely weathered
25IWBAC003	1m Sample	108	109	1	0.2	Transitional weathering
25IWBAC004	1m Sample	NSA			0	
25IWBAC005	1m Sample	NSA			0	
25IWBAC006	1m Sample	NSA			0	
25IWBAC007	1m Sample	75	76	1	0.2	Completely weathered
25IWBAC007	1m Sample	101	102	1	0.1	Transitional weathering
25IWBAC008	1m Sample	NSA			0	

Hole ID	Sample type / Sub	From (m)	To (m)	Interval (m)	Au (g/t)	Comment
25IWBAC009	1m Sample	59	60	1	0.2	Completely weathered
25IWBAC010	1m Sample	28	29	1	0.1	Completely weathered
25IWBAC019	1m Sample	NSA			0	
25IWBAC023	1m Sample	90	101	11	2.1	Transitional weathering
25IWBAC023	Including	92	99	7	3.1	Transitional weathering
25IWBAC023	Including	96	99	3	4.9	Transitional weathering
25IWBAC023	1m Sample					Fresh rock
25IWBAC023	1m Sample					Fresh rock
25IWBAC023	1m Sample					Fresh rock
25IWBAC030	1m Sample	NSA			0	Transitional weathering
25IWBAC032	1m Sample	30	31	1	0.7	Completely weathered
25IWBAC032	1m Sample	45	57	12	1.1	Completely weathered
25IWBAC032	including	45	47	2	3.2	Completely weathered & transitional
25IWBAC032	including	53	54	1	2.5	Transitional weathering
25IWBAC032	1m Sample	70	82	12	0.5	Transitional weathering
25IWBAC032	Including	74	75	1	2.0	Transitional weathering
25IWBAC035	1m Sample	105	106	1	0.1	Transitional weathering
25IWBAC035	1m Sample	114	122	8	0.2	Transitional weathering
25IWBAC036	1m Sample	144	146	2	0.3	Transitional weathering

NSA - no significant assays.

Relevant Previous ASX Announcements

- Caladan Air-Core Drilling Program Commences, 5 June 2025
- RIU Sydney Presentation, 7 May 2025
- Arrakis RC Drilling Results, 30 April 2025
- Ironstone Well-Barwidgee Exploration Update, 25 February 2025
- Caladan Air-Core Drilling Demonstrates Discovery Potential, 15 January 2025
- Air-core Drilling Commences Across Caladan and Irulan, 10 October 2024
- Oblique Diamond Drilling Results, 3 September 2024
- IWB Soil Results and NEG Diamond Drilling Complete, 12 August 2024
- Large-scale Gold Anomalies Across Emerging Targets, 15 July 2024
- Gold Coast Investment Showcase Presentation, 20 June 2024
- Exploration Update – IWB Ground Gravity Survey, 11 June 2024

**Appendix 1 – Ironstone Well-Barwidgee Gold Project, Caladan Air-Core Drilling
JORC Code (2012) Table 1, Sections 1 and 2**

Mr Christopher Oorschot, Managing Director of Yandal Resources, compiled the information in Section 1 and Section 2 of the following JORC Table 1 and is the Competent Person for those sections. The following Table and Sections are provided to ensure compliance with the JORC Code (2012 edition) requirements for the reporting of Exploration Results.

Section 1 Sampling Techniques and Data

Criteria	JORC Code explanation	Commentary
Sampling techniques	<i>Nature and quality of sampling (e.g. cut channels, random chips, or specific specialised industry standard measurement tools appropriate to the minerals under investigation, such as down hole gamma sondes, or handheld XRF instruments, etc.). These examples should not be taken as limiting the broad meaning of sampling.</i>	<ul style="list-style-type: none"> Yandal Resources has completed multiple lines of air-core (AC) drilling across the core of the Caladan target area. The drilling utilised an 85mm air-core blade reaming down to an average down-hole depth of 103m. Hole depths vary between 41m to 209m. All air-core holes were drilled to fresh rock or until blade refusal. Holes were drilled at an angle of -60° to the southwest. Groundwater was often encountered during the process of drilling; in the limited number of times where excessive water was encountered holes were close to the target depth. Yandal Resources (YRL) air-core drilling samples were collected via a rig-mounted hydraulically operated cyclone and splitter. One split was collected for each meter and then sent to a lab for further analysis. Historic RAB drilling completed by Eagle Mining and Hunter Resources was detailed in the ASX release dated 15 July 2024, the original open-file reports are referenced below: <ul style="list-style-type: none"> For historic RAB drilling completed by Eagle Mining in 1995, derived from WAMEX Report A047408, samples were taken over discrete lithological changes of varying lengths. Holes were terminated once a recognisable saprolitic horizon was intercepted. For historic RAB drilling completed by Hunter Resources in 1995, derived from WAMEX Report A047408, samples were collected as 4m composites from the transported/residual interface to the bottom of the hole.
	<i>Include reference to measures taken to ensure sample representivity and the appropriate calibration of any measurement tools or systems used.</i>	<ul style="list-style-type: none"> For YRL Air-core drilling, the cone splitter is regularly cleaned and inspected. The 1m bulk samples are laid out on the ground in drill order. These samples are regularly inspected for contamination, and the volume of the bulk sample is monitored. The cyclone was routinely cleaned to ensure no material buildup.
	<i>Aspects of the determination of mineralisation that are Material to the Public Report. In cases where 'industry standard' work has been done this would be relatively simple (e.g. 'reverse circulation drilling was used to obtain 1 m samples from which 3 kg was pulverised to produce a</i>	<ul style="list-style-type: none"> AC drilling was used to obtain 1m samples from which a portion, between 1-3kg in weight, was dispatched to Intertek Minerals: samples were crushed and pulverised to produce a 50g charge for lead collection fire assay with OES (Optical Emission Spectroscopy) finish for gold determination with a 0.005ppm detection limit.

Criteria	JORC Code explanation	Commentary
	<p>30 g charge for fire assay'). In other cases more explanation may be required, such as where there is coarse gold that has inherent sampling problems. Unusual commodities or mineralisation types (e.g. submarine nodules) may warrant disclosure of detailed information.</p>	
<p>Drilling techniques</p>	<p>Drill type (e.g. core, reverse circulation, open-hole hammer, rotary air blast, auger, Bangka, sonic, etc) and details (e.g. core diameter, triple or standard tube, depth of diamond tails, face-sampling bit or other type, whether core is oriented and if so, by what method, etc).</p>	<ul style="list-style-type: none"> • For YRL Air-core drilling, an 85mm air-core blade was used.
<p>Drill sample recovery</p>	<p>Method of recording and assessing core and chip sample recoveries and results assessed.</p> <p>Measures taken to maximise sample recovery and ensure representative nature of the samples.</p> <p>Whether a relationship exists between sample recovery and grade and whether sample bias may have occurred due to preferential loss/gain of fine/coarse material.</p>	<ul style="list-style-type: none"> • For YRL holes, air-core drilling recoveries are visually assessed by the supervising geologist, and any low-volume or oversized sample piles were recorded, along with any damp or wet samples. Drill depths are routinely verified at the completion of each drill rod (every 6m). • Within the limited drilling completed, there appears to be no correlation between sample recovery and sample grade.
<p>Logging</p>	<p>Whether core and chip samples have been geologically and geotechnically logged to a level of detail to support appropriate Mineral Resource estimation, mining studies and metallurgical studies.</p> <p>Whether logging is qualitative or quantitative in nature. Core (or costean, channel, etc) photography.</p> <p>The total length and percentage of the relevant intersections logged.</p>	<ul style="list-style-type: none"> • For YRL drilling, all air-core holes have been logged in full by a qualified and experienced geologist. Logging data was captured in MX Deposit data capture and database software. All drilled intervals were logged for colour, weathering, lithology, deformation, veining and sulphide species. End-of-hole samples were sieved and retained in labelled and annotated chip trays. Chip trays will be transported to Perth for long-term storage and are available for review. • In addition to geological logging, the magnetic susceptibility of each interval is measured using a KT-10 magnetic susceptibility metre, with a sensitivity of 1×10^{-6} SI Units. Magnetic susceptibility readings are quantitative in nature.

Criteria	JORC Code explanation	Commentary
Sub-sampling techniques and sample preparation	<p><i>If core, whether cut or sawn and whether quarter, half or all core taken.</i></p> <p><i>If non-core, whether riffled, tube sampled, rotary split, etc and whether sampled wet or dry.</i></p> <p><i>For all sample types, the nature, quality and appropriateness of the sample preparation technique.</i></p> <p><i>Quality control procedures adopted for all sub-sampling stages to maximise representivity of samples.</i></p> <p><i>Measures taken to ensure that the sampling is representative of the in situ material collected, including for instance results for field duplicate/second-half sampling.</i></p> <p><i>Whether sample sizes are appropriate to the grain size of the material being sampled.</i></p>	<ul style="list-style-type: none"> • YRL Air-core drilling utilised a rig-mounted cone splitter installed directly below and in line with the rig-mounted cyclone. One 1-3kg sub-samples was collected into calico bags labelled with a unique alpha-numeric ID. Most samples collected were dry; if samples were damp or wet, this was noted in the sample records. • Field duplicates were collected at an initial rate of 1 duplicate for every 50 samples collected. • Standards and blanks were routinely inserted into the sample sequence at a frequency of 1 standard or blank for every 20 routine samples. • For labs used by YRL, internal lab quality control measures include lab duplicates and the insertion of lab standards and blanks
Quality of assay data and laboratory tests	<p><i>The nature, quality and appropriateness of the assaying and laboratory procedures used and whether the technique is considered partial or total.</i></p> <p><i>For geophysical tools, spectrometers, handheld XRF instruments, etc, the parameters used in determining the analysis including instrument make and model, reading times, calibrations factors applied and their derivation, etc.</i></p> <p><i>Nature of quality control procedures adopted (e.g. standards, blanks, duplicates, external laboratory checks) and whether acceptable levels of accuracy (i.e. lack of bias) and precision have been established.</i></p>	<ul style="list-style-type: none"> • For YRL air-core drilling, samples were assayed at the following labs using the following methods: <ul style="list-style-type: none"> ◦ Intertek Minerals in Maddington, Western Australia, assayed using a 50g charge for lead collection fire assay with OES (Optical Emission Spectroscopy) finish for gold determination with a 0.005ppm detection limit. ◦ This is considered a total digest and appropriate for the targeted style of mineralisation. • Magnetic susceptibility measurements were taken every meter using a KT-10 V2 instrument with a sensitivity of 1x10⁻⁶ SI Units. • YRL QAQC field protocols include the insertion of commercially prepared certified reference material (CRM) and blank material at a rate of approximately 1 CRM/blank for every 20 samples collected. CRMs used are un-identifiable by the lab when received. QAQC performance is monitored upon receipt of each batch of results and re-assessed once all samples for a program are received. • Laboratory QA/QC protocols involve inserting internal lab standards using CRMs, blanks, repeat analysis of pulps and screen tests (the percentage of pulverised material passing 75µm mesh). Laboratory QAQC results are reported with each batch. Laboratory QAQC performance is monitored upon receipt of each batch of results and assessed again once all

Criteria	JORC Code explanation	Commentary
		samples for a program are received.
Verification of sampling and assaying	<p>The verification of significant intersections by either independent or alternative company personnel.</p> <p>The use of twinned holes.</p> <p>Documentation of primary data, data entry procedures, data verification, data storage (physical and electronic) protocols.</p> <p>Discuss any adjustment to assay data.</p>	<ul style="list-style-type: none"> Significant intercepts from YRL AC drilling are verified by YRL geologists through the visual inspection of chips, reviewing the spatial location of mineralisation relative to previous intercepts, and in the case of high-grade gold intercepts, the panning of drill fines to visually confirm gold in samples. No twinned holes have been completed across the Caladan Target area For YRL AC Drilling, primary sampling and logging data are captured directly into the MX deposit application and uploaded directly to the cloud-hosted MX Deposit database. The first assay result for each sample is used for the reporting of significant intercepts, and no adjustments have been made to the assay data.
Location of data points	<p>Accuracy and quality of surveys used to locate drill holes (collar and down-hole surveys), trenches, mine workings and other locations used in Mineral Resource estimation.</p> <p>Specification of the grid system used.</p> <p>Quality and adequacy of topographic control.</p>	<ul style="list-style-type: none"> All drill collar locations were initially pegged and surveyed using a handheld Garmin GPS, which was accurate to within 3-5m. RLs are determined using a detailed surface DTM. No down-hole survey data was collected for AC drilling. All spatial data presented is relative to UTM MGA94 Zone 51s. Data from aerial surveys has been used to generate a topographic surface model; this model is used to validate the RL of surveyed holes. The terrain around the prospect area is relatively flat, with no severe changes in topography.
Data spacing and distribution	<p>Data spacing for reporting of Exploration Results.</p> <p>Whether the data spacing and distribution is sufficient to establish the degree of geological and grade continuity appropriate for the Mineral Resource and Ore Reserve estimation procedure(s) and classifications applied.</p> <p>Whether sample compositing has been applied.</p>	<ul style="list-style-type: none"> For AC drilling across the Caladan target area, holes were variably spaced between 50m to 200m along ten 400m to 800m spaced drill lines, oriented towards 045°, that transect the Caladan fold structure. All collar details/coordinates are supplied in Table 2. The hole/data spacing and distribution used for AC drilling completed across the Caladan target area is insufficient to establish a preliminary assessment of the degree of geological and grade continuity, nor is it appropriate for estimating a Mineral Resource. Only significant gold intercepts have been reported, meaning all intervals >0.1 g/t Au (unless otherwise stated). These intervals have been reported as a composite where the intercept includes more than one sample. Composites may include up to 2m of continuous internal waste unless otherwise stated, and the final composite grade must exceed 0.1g/t Au. Only 1m samples were used for the reporting of significant intercepts. The first assay result was used for all significant intercepts reported. All intercepts have been reported relative to down-hole length. All intercepts are reported in grams per tonne (g/t). If a single composite includes material with a high-grade sub-interval, this has been reported as a sub-interval. Reported composite intervals were calculated and reviewed by Mr. Christopher Oorschot. All significant intercepts are detailed in Table 3.

Criteria	JORC Code explanation	Commentary
Orientation of data in relation to geological structure	<p>Whether the orientation of sampling achieves unbiased sampling of possible structures and the extent to which this is known, considering the deposit type.</p> <p>If the relationship between the drilling orientation and the orientation of key mineralised structures is considered to have introduced a sampling bias, this should be assessed and reported if material.</p>	<ul style="list-style-type: none"> For AC drilling, holes within the broader Caladan Prospect have been drilled at a -60° angle to the southwest to target sub-vertical structures in interpreted folded stratigraphy based on the interpretation of ground gravity data. As only limited broad spaced drilling has been completed to date, further drilling is needed to verify the geometry of mineralisation and to understand any potential sampling bias associated with drilling direction.
Sample security	<p>The measures taken to ensure sample security.</p>	<ul style="list-style-type: none"> All YRL samples were collected on-site under the supervision of a qualified geologist. Calico bags are tied, grouped into larger poly-weave bags that are cable tied, and then placed into sealed bulka bags for transport. The labelled bulka bags are then transported directly to the laboratory for analysis via a commercial freight company or YRL geologists. Where a commercial freight company is used for transport, consignment notes and confirmation of receipt by the lab were monitored.
Audits or reviews	<p>The results of any audits or reviews of sampling techniques and data.</p>	<ul style="list-style-type: none"> No lab audits or reviews have been completed.

Section 2 Reporting of Exploration Results

Criteria	JORC Code explanation	Commentary
Mineral tenement and land tenure status	<p>Type, reference name/number, location and ownership including agreements or material issues with third parties such as joint ventures, partnerships, overriding royalties, native title interests, historical sites, wilderness or national park and environmental settings.</p> <p>The security of the tenure held at the time of reporting along with any known impediments to obtaining a licence to operate in the area.</p>	<ul style="list-style-type: none"> The Caladan target area including the Arrakis Prospect, resides in the exploration leases E 53/1843, E 53/2304, E 53/2192 and E 53/1882. Yandal Resources Limited wholly owns these tenements. The tenements are in good standing, and no known impediments exist.

Criteria	JORC Code explanation	Commentary
.Exploration done by other parties	<i>Acknowledgment and appraisal of exploration by other parties.</i>	<ul style="list-style-type: none"> • Previous operators who have completed exploration across the Caladan target area include Eagle Mining, Hunter Resources and Great Central Mines. Work completed by these operators included limited RAB a. The RAB drilling data is of a reasonable quality. • For historic RAB drilling completed by Eagle Mining in 1995, derived from WAMEX Report A047408, samples were taken over discrete lithological changes of varying lengths. Holes were terminated once a recognisable saprolitic horizon was intercepted. • For historic RAB drilling completed by Hunter Resources in 1995, derived from WAMEX Report A047408, samples were collected as 4m composites from the transported/residual interface to the bottom of the hole.
Geology	<i>Deposit type, geological setting and style of mineralisation.</i>	<ul style="list-style-type: none"> • The Caladan target area, including the Arrakis Prospect, is assumed to host Archaean Orogenic Gold mineralisation. The prospect is located within the Yandal Greenstone Belt, a greenstone terrain of the Yilgarn Craton. Mineralisation is hosted within interpreted mafic and intermediate lithologies. The archaean rocks are overlain by 2-20m of transported cover.
Drill hole Information	<p><i>A summary of all information material to the understanding of the exploration results including a tabulation of the following information for all Material drill holes:</i></p> <ul style="list-style-type: none"> • <i>easting and northing of the drill hole collar</i> • <i>elevation or RL (Reduced Level – elevation above sea level in metres) of the drill hole collar</i> • <i>dip and azimuth of the hole</i> • <i>down hole length and interception depth</i> • <i>hole length.</i> <p><i>If the exclusion of this information is justified on the basis that the information is not Material and this exclusion does not detract from the understanding of the report, the Competent Person should clearly explain why this is the case.</i></p>	<ul style="list-style-type: none"> • See Tables 2 & 3. • All drilling has been reported, either within this announcement or in previous announcements. • No information is excluded.
Data aggregation methods	<p><i>In reporting Exploration Results, weighting averaging techniques, maximum and/or minimum grade truncations (e.g. cutting of high grades) and cut-off grades are usually Material and should be stated.</i></p> <p><i>Where aggregate intercepts incorporate short lengths of high grade results and longer lengths of low grade results,</i></p>	<ul style="list-style-type: none"> • Only significant gold intercepts have been reported, meaning all intervals >0.1 g/t Au (unless otherwise stated). These intervals have been reported as a composite where the intercept includes more than one sample. Composites may include up to 2m of continuous internal waste unless otherwise stated, and the final composite grade must exceed 0.1g/t Au. • Only 1m samples were used for the reporting of significant intercepts. The first reported assay result was used for all significant intercepts reported. All intercepts have been reported relative to down-hole length. All intercepts are reported in grams per tonne (g/t). If a single composite includes a material high-grade sub-interval, this has been reported. Reported composite

Criteria	JORC Code explanation	Commentary
	<p><i>the procedure used for such aggregation should be stated and some typical examples of such aggregations should be shown in detail. The assumptions used for any reporting of metal equivalent values should be clearly stated.</i></p>	<p>intervals were calculated and reviewed by Mr Christopher Oorschot. All significant intercepts are detailed in Table 3.</p> <ul style="list-style-type: none"> No metal equivalent calculations were applied.
<p>Relationship between mineralisation widths and intercept lengths</p>	<p><i>These relationships are particularly important in the reporting of Exploration Results.</i></p> <p><i>If the geometry of the mineralisation with respect to the drill hole angle is known, its nature should be reported.</i></p> <p><i>If it is not known and only the down hole lengths are reported, there should be a clear statement to this effect (e.g. 'down hole length, true width not known').</i></p>	<ul style="list-style-type: none"> Initial interpretations across the Caladan target area suggest stratigraphy is striking to the northwest. The dip of stratigraphy is unknown. The relationship between the geometry of mineralisation and the drilling direction is unknown. Observation from previous drilling on a single line that transects the Caladan target area suggests sub-vertical shear zones are associated with mineralisation and are striking to the northwest.
<p>Diagrams</p>	<p><i>Appropriate maps and sections (with scales) and tabulations of intercepts should be included for any significant discovery being reported. These should include, but not be limited to a plan view of drill hole collar locations and appropriate sectional views.</i></p>	<ul style="list-style-type: none"> See Figures in the main body of this report and Tables 2-3.
<p>Balanced reporting</p>	<p><i>Where comprehensive reporting of all Exploration Results is not practicable, representative reporting of both low and high grades and/or widths should be practiced to avoid misleading reporting of Exploration Results.</i></p>	<ul style="list-style-type: none"> All significant intercepts have been reported.
<p>Other substantive exploration data</p>	<p><i>Other exploration data, if meaningful and material, should be reported including (but not limited to): geological observations; geophysical survey results; geochemical survey results; bulk samples – size and method of treatment; metallurgical test results; bulk density, groundwater, geotechnical and rock characteristics; potential deleterious or contaminating substances.</i></p>	<ul style="list-style-type: none"> Heritage surveys are needed before any closer spaced lines can be cleared and drilled across the Caladan target area. Several larger drainage systems transect the Caladan target area.

Criteria	JORC Code explanation	Commentary
Further work	<p><i>The nature and scale of planned further work (e.g. tests for lateral extensions or depth extensions or large-scale step-out drilling).</i></p> <p><i>Diagrams clearly highlighting the areas of possible extensions, including the main geological interpretations and future drilling areas, provided this information is not commercially sensitive.</i></p>	<ul style="list-style-type: none"> • Further work across the Caladan target area and Arrakis Prospect includes: <ul style="list-style-type: none"> ○ Further ongoing AC drilling, ○ Follow-up RC drilling subject to further AC results, ○ Analysis of bottom-of-hole multi-element data once results are received, ○ Heritage surveys to clear additional lines across the Caladan target area, ○ Infill ground gravity survey subject to further AC results.

personal use only