

**10 July 2025**

DRILLING RECOMMENCES AT YUNNDAGA TO SUPPORT FAST-TRACKED DEVELOPMENT STRATEGY AT MENZIES HUB

HIGHLIGHTS

- Brightstar has commenced its next phase of drilling at the Yunndaga deposit, which hosts a current resource of **3.4Mt at 1.4g/t Au for 156koz**
- Phase one drilling, completed in April, totalled ~6,100m of RC drilling, predominantly targeting infill of the mineral resource estimate
- Phase 2 drilling totals 5,000m of RC and 2,500m of diamond drilling, targeting extensions to the resource and further infill

Brightstar Resources Limited (ASX: BTR) (**Brightstar**) is pleased to announce the commencement of Phase two reverse circulation (**RC**) drilling at the **Yunndaga deposit**, part of the Menzies Hub which hosts a total current Mineral Resource Estimate (**MRE**) of **0.6Moz @ 1.4g/t Au**.

The Yunndaga area was a substantial historic producer, with Menzies Consolidated Gold Mines extracting **over 270koz of gold at an average grade of +16g/t Au¹**, from 1896 to 1943. Much of this production came from the Princess May workings, which extend to over 600m vertical depth. Open pit mining by Paddington Gold in the mid-1990's produced an additional ~64koz of gold at a grade of 2.5g/t Au.

The current resource extends to 240m vertical depth, with the recent feasibility study announced in June 2025² highlighting a potential underground operation producing 0.6Mt @ 2.6g/t Au (diluted mined grade) for ~50koz Au recovered gold production.

Brightstar's phase 1 drilling program targeted initial infill of the resource in areas optimised for underground production. Significant high-grade mineralisation was intersected, including **16m @ 8.03g/t Au from 220m** in YNRC25022³, highlighting the wide, high-grade zones of mineralisation present at the deposit. The second phase aims to both step out from these infill areas, and target extensions to the resource, both at depth and along strike to the north. Importantly, the diamond drilling component of the program will also provide crucial geotechnical data and metallurgical samples, facilitating further development work at the deposit.

Brightstar's Managing Director, Alex Rovira, commented: *"The next phase of drilling at Yunndaga is a key piece of our fast-tracked Menzies development plans. Recent exploration and study work has outlined the potential for an underground mining operation that complements the proposed Lady Shenton open pit mine to the north, and we are keen to further de-risk the project as well as test the exploration upside we see outside of the resource. The combined diamond and RC drilling program will provide the geological, geotechnical, and metallurgical data to progress the deposit to the next stage, with a number of holes also targeting extensions to the resource and optimised mine plan."*

For personal use only

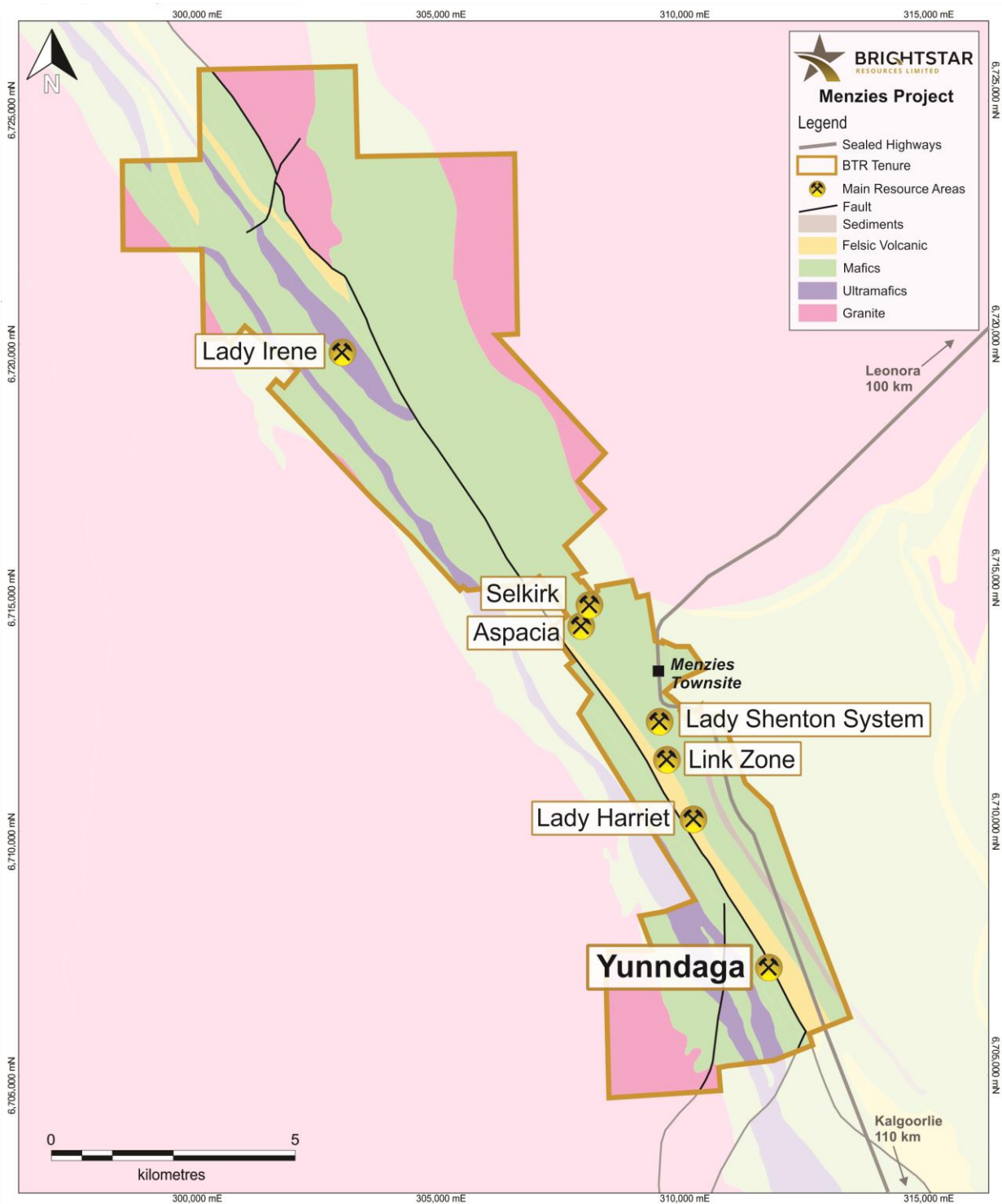


Figure 1 - Location map for the Menzies Hub, including the Yunddaga deposit.



Figure 2 - The RC drill rig in action at the northern end of the Yundaga Open pit



Figure 3 - Location map of drill collars for the phase 2 drilling at the Yundaga deposit

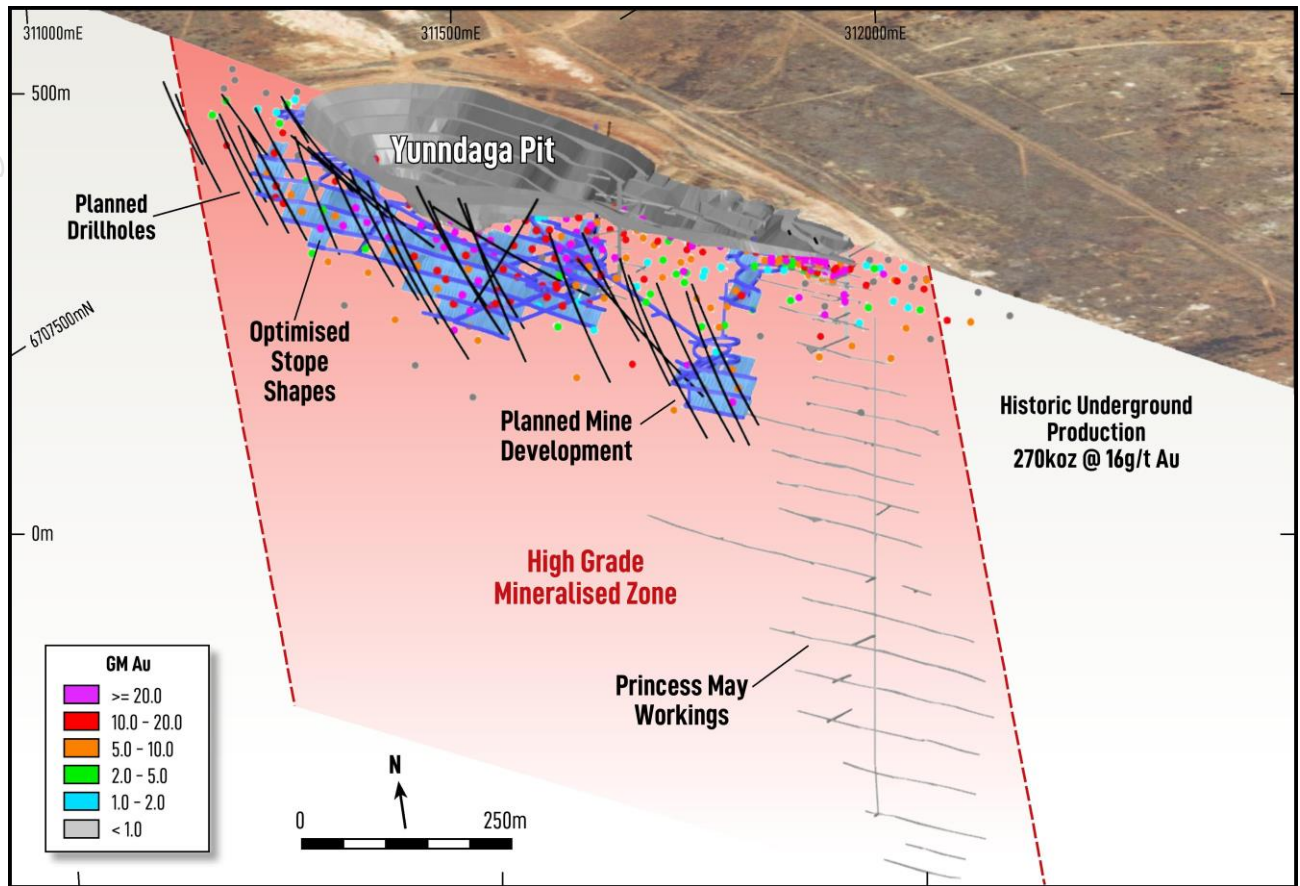


Figure 4 – Oblique long section view of the planned drilling at the Yunndaga deposit, in relation to the optimised stope shapes and preliminary mine design.

Next Steps

Brightstar currently has three surface drill rigs operating at the Laverton, Menzies and Sandstone Hubs. At Laverton, a diamond rig is currently drilling extensions to the RC pre-collars completed last month, testing the Fish deposit at depth with extensional and infill drilling designed at proving up mine life extension to the operating underground mine.

At Menzies, the Yunndaga RC program is now underway, whilst the RC exploration drilling continues at the Sandstone Gold Project.

Assays results will be reported to the market as they are received and analysed by Brightstar's technical team.

This ASX announcement has been approved by the Managing Director on behalf of the Board of Brightstar.

FOR FURTHER INFORMATION, PLEASE CONTACT:

Alex Rovira

Managing Director

Email: alex@brightstarresources.com.au

Investor Relations

Lucas Robinson

Phone: +61 408 228 889

Email: lucas@corporatetorytime.com

References

1. Refer Kingwest Resources ASX announcement dated 9 July 2019 "Menzies Gold Project Acquisition"
2. Refer Brightstar ASX announcement dated 30 June 2025 "Menzies and Laverton Gold Projects Feasibility Study"
3. Refer Brightstar ASX announcement dated 20 May 2025 "High-grade results incl 16m @ 8g/t Au in Menzies drilling"

ABOUT BRIGHTSTAR RESOURCES

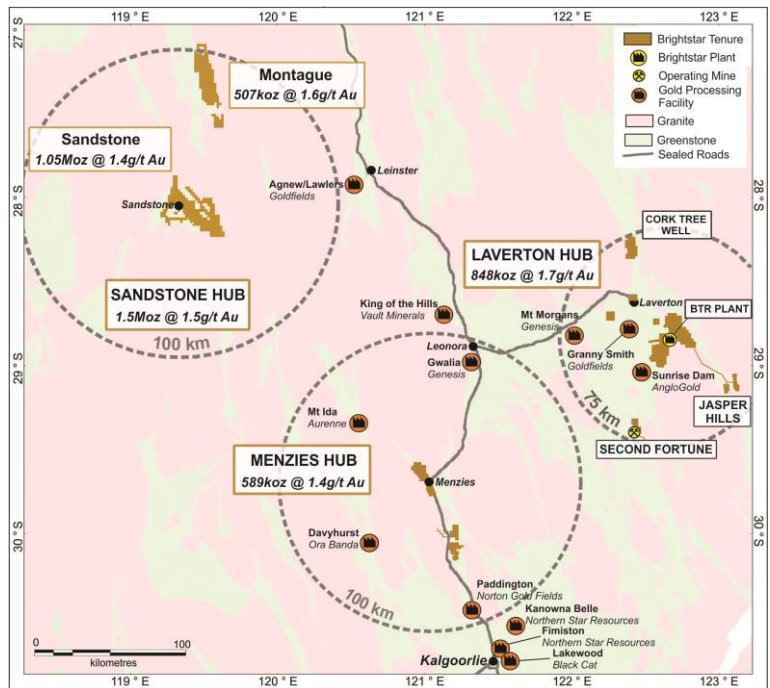
Brightstar Resources Limited is an emerging gold development company listed on the Australian Securities Exchange (ASX: BTR) and based in Perth, WA.

The Company hosts a portfolio of high-quality assets hosted in the Tier-1 jurisdiction of Western Australia, with 3.0Moz of Mineral Resources across the Goldfields and Murchison regions, ideally located near key infrastructure such as sealed highways and on granted mining leases for ready development.

Brightstar owns and operates the underground Second Fortune and Fish Gold Mines south of Laverton, which are processed by Genesis Minerals Ltd (ASX: GMD) at their Laverton Mill under an Ore Purchase Agreement.

A Definitive Feasibility Study on the Menzies and Laverton Gold Projects, released in June 2025, outlined the production of approximately 70,000oz per annum for five years across several open pit and underground mines. This production is set to deliver excellent financial metrics, including life-of-mine cash flows of A\$461 million and internal rate of return (IRR) of 73% at A\$5,000/oz gold price.

Brightstar aspires to be a leading mid-tier gold miner via a staged growth strategy, with current operations and proposed expansions providing a great platform for growth.



Brightstar Consolidated JORC Mineral Resources

Location	Cut-off	Measured			Indicated			Inferred			Total		
		g/t Au	kt	g/t Au	koz	kt	g/t Au	koz	kt	g/t Au	koz	kt	g/t Au
Alpha	0.5	623	1.6	33	374	2.1	25	455	3.3	48	1,452	2.3	106
Beta	0.5	345	1.7	19	576	1.6	29	961	1.7	54	1,882	1.7	102
Cork Tree Well	0.5	-	-	-	3,264	1.6	166	3,198	1.2	126	6,462	1.4	292
Lord Byron	0.5	311	1.7	17	1,975	1.5	96	2,937	1.5	138	5,223	1.5	251
Fish	1.6	25	5.4	4	199	4.5	29	153	3.2	16	376	4.0	49
Gilt Key	0.5	-	-	-	15	2.2	1	153	1.3	6	168	1.3	8
Second Fortune (UG)	2.5	24	15.3	12	34	13.7	15	34	11.7	13	92	13.4	40
Total – Laverton		1,328	2.0	85	6,437	1.7	361	7,891	1.6	401	15,655	1.7	848
Lady Shenton System (Pericles, Lady Shenton, Stirling)	0.5	-	-	-	2,590	1.5	123	2,990	1.6	150	5,580	1.5	273
Yunndaga	0.5	-	-	-	1,270	1.3	53	2,050	1.4	90	3,320	1.3	144
Yunndaga (UG)	2	-	-	-	-	-	-	110	3.3	12	110	3.3	12
Aspacia	0.5	-	-	-	137	1.7	7	1,238	1.6	62	1,375	1.6	70
Lady Harriet System (Warrior, Lady Harriet, Bellenger)	0.5	-	-	-	520	1.3	22	590	1.1	21	1,110	1.2	43
Link Zone	0.5	-	-	-	160	1.3	7	740	1.0	23	890	1.0	29
Selkirk	0.5	-	-	-	30	6.3	6	140	1.2	5	170	2.1	12
Lady Irene	0.5	-	-	-	-	-	-	100	1.7	6	100	1.7	6
Total – Menzies		-	-	-	4,707	1.4	218	7,958	1.4	369	12,655	1.4	589
Montague-Boulder	0.6	-	-	-	522	4.0	67	2,556	1.2	96	3,078	1.7	163
Whistler (OP) / Whistler (UG)	0.5/ 2.0	-	-	-	-	-	-	1,700	2.2	120	1,700	2.2	120
Evermore	0.6	-	-	-	-	-	-	1,319	1.6	67	1,319	1.6	67
Achilles Nth / Airport	0.6	-	-	-	221	2.0	14	1,847	1.4	85	2,068	1.5	99
Julias ¹ (Resource)	0.6	-	-	-	1,405	1.4	61	503	1.0	16	1,908	1.3	77
Julias ² (Attributable)	0.6	-	-	-	-	-	-	-	-	-	1,431	1.3	58
Total – Montague (Global)		-	-	-	2,148	2.1	142	7,925	1.5	384	10,073	1.6	526
Total – Montague (BTR)^{1,2}		-	-	-	1,797	2.1	127	7,799	1.5	380	9,596	1.6	507
Lord Nelson	0.5	-	-	-	1,500	2.1	100	4,100	1.4	191	5,600	1.6	291
Lord Henry	0.5	-	-	-	1,600	1.5	78	600	1.1	20	2,200	1.4	98
Vanguard Camp	0.5	-	-	-	400	2.0	26	3,400	1.4	191	3,800	1.5	217
Havilah Camp	0.5	-	-	-	-	-	-	1,200	1.3	54	1,200	1.3	54
Indomitable Camp	0.5	-	-	-	800	0.9	23	7,300	0.9	265	8,100	0.9	288
Bull Oak	0.5	-	-	-	-	-	-	2,500	1.1	90	2,500	1.1	90
Ladybird	0.5	-	-	-	-	-	-	100	1.9	8	100	1.9	8
Total – Sandstone		-	-	-	4,300	1.6	227	19,200	1.3	819	23,500	1.4	1,046
Total – BTR (Attributable)		1,328	2.0	85	17,592	1.7	948	42,974	1.4	1,973	61,406	1.5	2,990

Refer MRE Note below. Note some rounding discrepancies may occur.

Pericles, Lady Shenton & Stirling consolidated into Lady Shenton System.

Warrior, Lady Harriet & Bellenger consolidated into Lady Harriet System.

Note 1: Julias is located on M57/427, which is owned 75% by Brightstar and 25% by Estuary Resources Pty Ltd

Note 2: Attributable gold ounces to Brightstar include 75% of resources of Julias as referenced in Note 1.

Forward-Looking Statements

This document may include forward-looking statements. Forward-looking statements include, but are not limited to, statements concerning Brightstar Resources Limited's planned exploration program and other statements that are not historical facts. When used in this document, the words such as "could," "plan," "expect," "intend," "may", "potential," "should," and similar expressions are forward-looking statements. Although Brightstar believes that its expectations reflected in these forward-looking statements are reasonable, such statements involve risks and uncertainties, and no assurance can be given that further exploration will result in the estimation of a Mineral Resource.

Competent Person Statement – Exploration Results

The information presented here relating to the Exploration Results of the Menzies, Laverton and Sandstone Gold Project areas is based on and fairly represents information compiled by Mr Michael Kammermann, MAIG. Mr Kammermann is a Member of the Australasian Institute of Geoscientists (AIG) and has sufficient experience relevant to the style of mineralisation and type of deposit under consideration and to the activity he is undertaking to qualify as a “Competent Person” as that term is defined in the 2012 Edition of the “Australasian Code of Reporting of Exploration Results, Mineral Resources and Ore Reserves (JORC Code 2012)”. Mr Kammermann is a fulltime employee of the Company in the position of Exploration Manager and has provided written consent approving the inclusion of the Exploration Results in the form and context in which they appear.

Competent Person Statement – Mineral Resource Estimates

This Announcement contains references to Brightstar’s JORC Mineral Resource estimates, extracted from the ASX announcements titled “Cork Tree Well Resource Upgrade Delivers 1Moz Group MRE” dated 23 June 2023, “Maiden Link Zone Mineral Resource” dated 15 November 2023, “Aspacia deposit records maiden Mineral Resource at the Menzies Gold Project” dated 17 April 2024, “Brightstar Makes Recommended Bid for Linden Gold”, dated 25 March 2024, “Brightstar to drive consolidation of Sandstone Gold District” dated 1 August 2024 and “Scheme Booklet Registered by ASIC” dated 14 October 2024 and “Robust Mineral Resource Upgrades at Laverton and Menzies Underpins Future Mining Operations” dated 19 May 2025.

Brightstar confirms that it is not aware of any new information or data that materially affects the information included in the original market announcements and that all material assumptions and technical parameters underpinning the Mineral Resource estimates in the relevant market announcements continue to apply and have not materially changed. The Company confirms that the form and context in which the Competent Person’s findings are presented have not been materially modified from the original market announcements.

Compliance Statement

With reference to previously reported Exploration Results and Mineral Resources, the Company confirms that it is not aware of any new information or data that materially affects the information included in the original market announcement and, in the case of estimates of Mineral Resources that all material assumptions and technical parameters underpinning the estimates in the relevant market announcement continue to apply and have not materially changed. The company confirms that the form and context in which the Competent Person’s findings are presented have not been materially modified from the original market announcement.