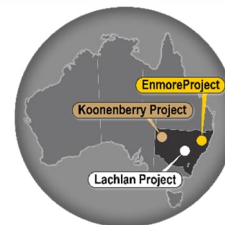


ASX ANNOUNCEMENT
22 July 2025



KNB identifies high-grade gold target on parallel shear zone to Sunnyside highlighting district potential

HIGHLIGHTS

Koonenberry Gold Limited (ASX:KNB) has received assays from ongoing district scale exploration at its Enmore Gold Project in northeast NSW. Results highlight:

- A robust >950m long x ~300m wide gold in soil anomaly (364ppb peak Au).
- High-grade rock chips including 14.05g/t Au, 11.09g/t Au, 8.77g/t Au, 6.63g/t Au, 5.95g/t Au, 5.76g/t Au, 5.68g/t Au and 5.65g/t Au with visible gold noted (refer photos 1 & 2).
- Mineralisation is associated with quartz-sericite-pyrite alteration, multi-stage brecciation and veining which is consistent with the mineralisation style observed at Sunnyside.
- Located along the Borah Fault, a parallel regional scale structure to the Sunnyside Shear Zone, in a similar structural and lithological setting to the Sunnyside Prospect.
- Results highlight the prospectivity of the greater Enmore Project outside of known mineralisation at Sunnyside.
- Multiple drill targets to be tested in the upcoming drilling program, on track for commencement in late August (weather permitting).
- KNB is well funded to continue exploration across its projects with \$8.7M cash.¹

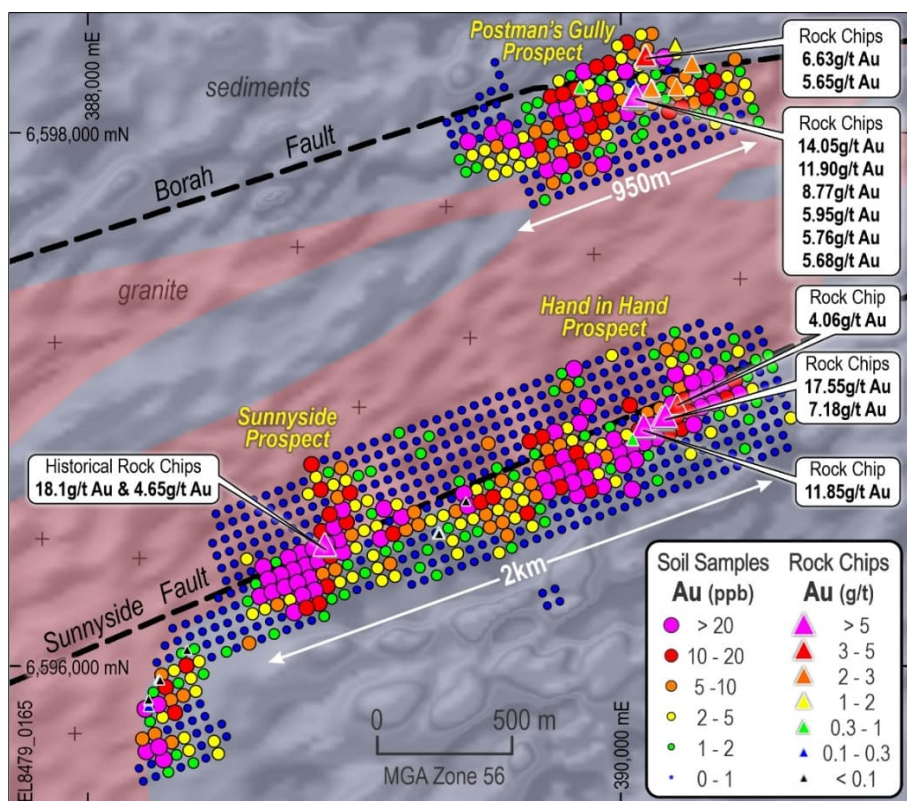


Figure 1. Gold in soils over geology highlighting district scale potential with a 2km long gold trend along the Sunnyside Shear Zone and a new target identified on a parallel structure ~1km to the north.

KNB Managing Director, Dan Power, commented: “We are applying the knowledge gained from our successful drilling campaign at Sunnyside and developing a pipeline of targets for drill testing. This newly defined target sits on a parallel structure to Sunnyside and highlights the untapped district potential of our Enmore Project giving us the ability to advance multiple targets in our next drilling campaign in conjunction with extensional drilling at Sunnyside. Drill planning is on track for commencement in late August if weather permits.”

¹ Cash at 30/06/2025. Refer ASX Announcements dated 21/07/2025.

For personal use only

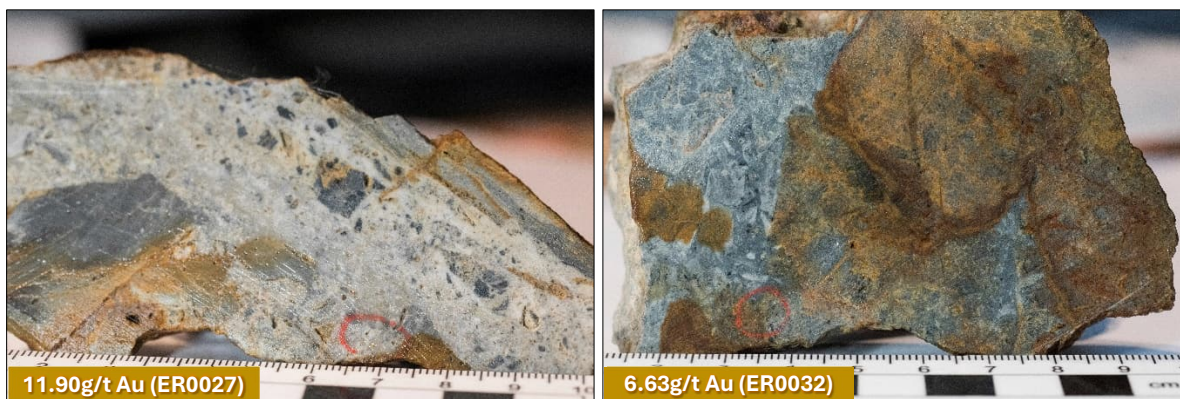


Photo 1 (left). 11.90g/t Au rock chip sample from mullock pile at Postman's Gully Prospect of poorly sorted, subangular breccia consisting of quartz-pyrite \pm sericite altered clasts of layered metasediment supported by a quartz-pyrite altered fine rock flour matrix **with visible gold (circled red)** noted in matrix.

Photo 2 (right). 6.63g/t Au rock chip sample **with visible gold (circled red)** from mullock pile at Postman's Gully Prospect of moderately sorted breccia consisting of subangular quartz-sericite \pm pyrite altered siltstone clasts supported by a quartz \pm pyrite matrix. Numerical units on scalebar are centimetres.



Photo 3 (left). 14.05g/t Au rock chip sample from mullock pile at Postman's Gully Prospect consisting of pervasive quartz-pyrite-sericite altered siltstone breccia with a rock flour matrix containing sulphides, cross cut by hairline quartz veins.

Photo 4 (right). 8.77g/t Au rock chip sample from mullock pile at Postman's Gully Prospect occurring as sericite-quartz-pyrite \pm Fe carbonate altered clasts of laminated metasediment supported by a fine-grained rock flour matrix.



Photo 5. Historical workings at Postman's Gully \sim 1.1km NE of Sunnyside on the parallel Borah Fault.

The Company confirms the visible gold observed as shown in Photos 1 & 2 is primary in nature and is hosted within breccia matrix.

Cautionary Note: Visual estimates of mineral abundance should never be considered a proxy or substitute for laboratory analyses where concentrations or grades are the factor of principal economic interest. Visual estimates also potentially provide no information regarding impurities or deleterious physical properties relevant to valuations. Assays have been received and are provided in Table 4 in this release.

For personal use only

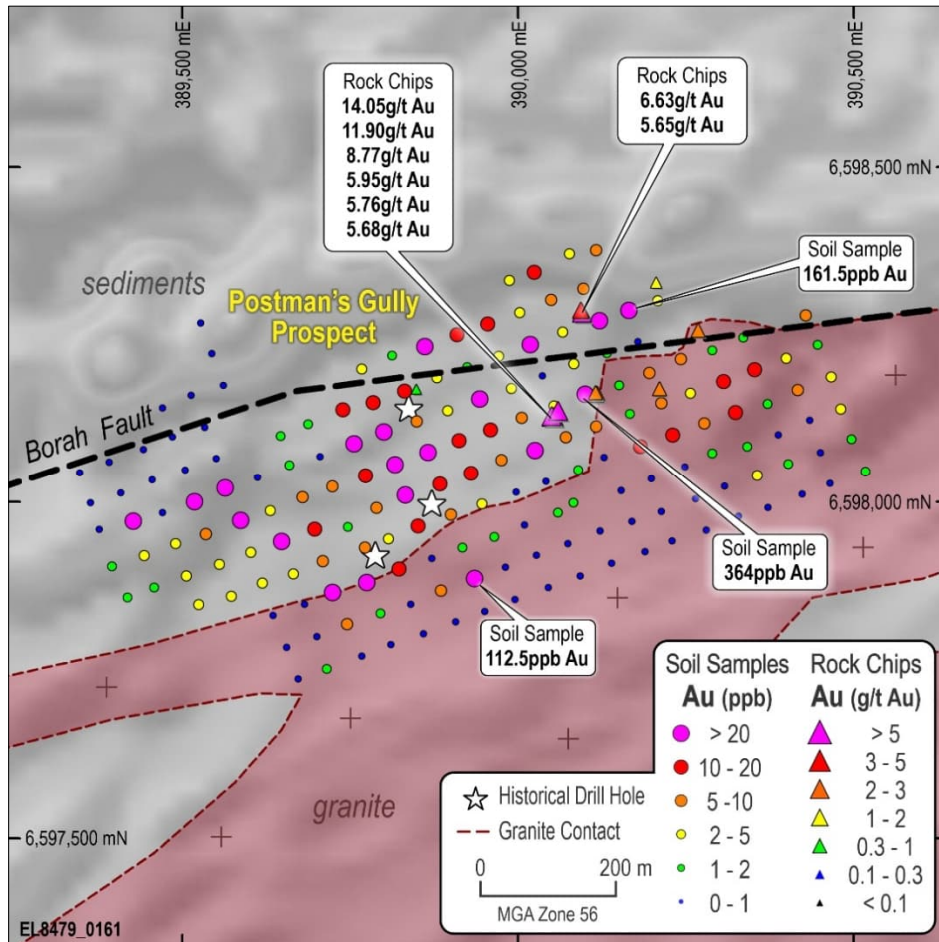


Figure 2. Gold results from recent soil and rock chip sampling at Postman's Gully.

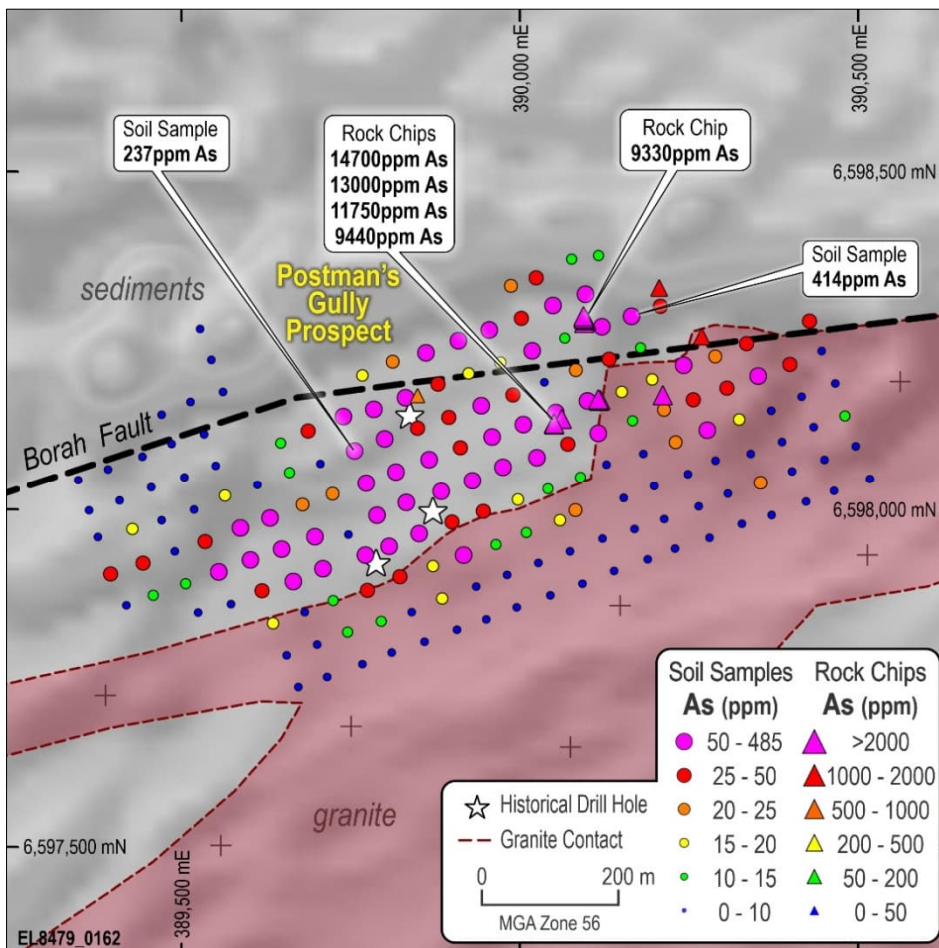


Figure 3. Arsenic results from recent soil and rock chip sampling at Postman's Gully.

DISCUSSION

Results from a 181 sample, nominal 50m x 50m soil grid across the Postman's Gully Prospect as well as 19 mullock rock samples from several historical workings were returned from KNB's 100%-owned Enmore Project in north east New South Wales.

Highlights include:

- High-grade gold rock chips including: 14.05g/t Au, 11.09g/t Au (ER0027), 8.77g/t Au, 6.63g/t Au (ER0032), 5.95g/t Au, 5.76g/t Au, 5.68g/t Au and 5.65g/t Au with visible gold noted in samples ER0024 (3.26g/t Au), ER0027 & ER0032.
- Definition of a robust >950m (>5ppb Au) and locally high tenor (up to 364ppb Au) gold in soil trend supported by As-Sb-Te-W pathfinder anomalism;
- **Soil anomaly remains open to the north as well as north-east and south west along the Borah Fault.**
- Historical workings returning visible gold and peak of gold in soil anomalism untested with historic exploration limited to three shallow holes for 254 metres.
- **Results highlight significant district upside with mineralisation identified along the Borah Fault Zone, a regional scale structure parallel to the Sunnyside Shear Zone.**

Work has identified a series of poorly sorted, sub angular breccias associated with the gold in soil anomaly, consisting of quartz-sericite-pyrite \pm arsenopyrite altered siltstone clasts and quartz vein material supported by a fine-grained rock flour matrix cut by multi-stage quartz veining.

The gold in soil anomaly is centred on two NNE-SSW orientated trends of historic workings at the contact between metasediments of the Girkool Beds and the Enmore Monzogranite, a similar structural and lithological setting to the nearby Sunnyside Prospect.

This work highlights the prospectivity of the greater Enmore Project outside of known mineralisation at the Sunnyside Prospect and demonstrates the prospectivity of the large-scale NNE-SSW orientated Borah Fault Zone, a parallel structure to the Sunnyside Shear Zone.

For personal use only



FORWARD PROGRAM

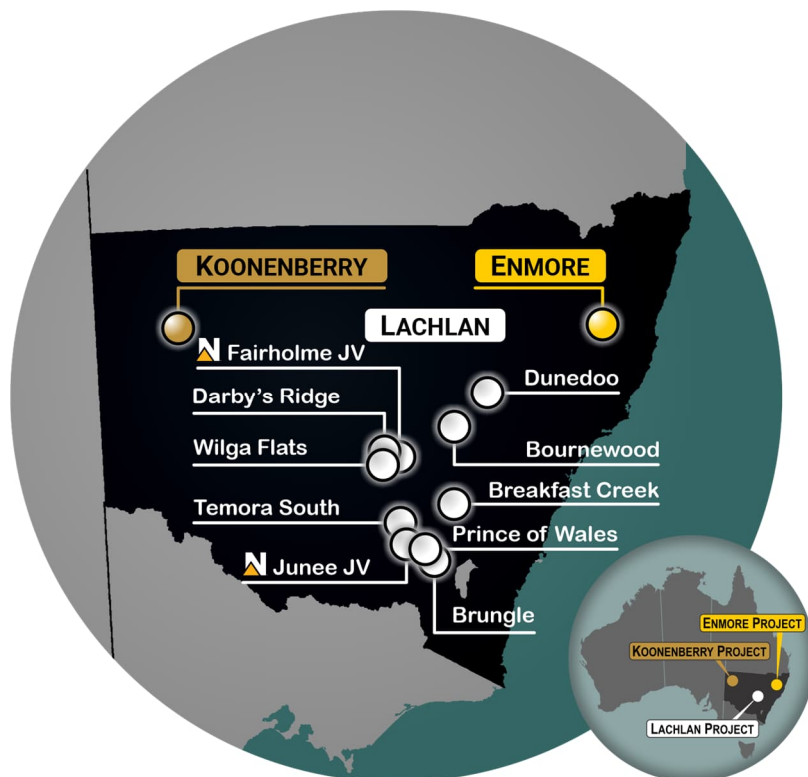
Koonenberry Gold has successfully completed its maiden diamond drill program at Enmore where drilling has intersected extensive intervals of gold mineralisation from surface as well as high-grade gold intervals at depth. Gold mineralisation has been intersected over an estimated ~75m true width, 300m vertical depth extent and +200m strike extent in results to date. The mineralisation remains open up-dip, down-dip and along strike to the NE and SW in the preferred granite host rock along the Sunnyside Shear Zone.

As previously reported, the Company awaits results for holes 25ENDD007, 008, 009 and 010. These results are anticipated early next month.

Results from the Phase I drilling program are being used to design +10,000m of follow-up drilling to test the continuity and extensions to mineralisation at Sunnyside as well as discovery and growth drilling along the Sunnyside Shear Zone, particularly to the east where the Company has identified an ~2km strike length of highly prospective granite associated with gold and arsenic soil anomalies, high-grade rock chips and wide-spaced, relatively shallow historical drilling containing anomalous gold.

The Company will conduct further soil sampling along the Sunnyside Shear Zone, Borah Fault and at other highly prospective targets within the district with results used to plan additional drilling. IP Geophysics is also being planned at Sunnyside, which may have potential to be used as a tool to help rank district targets and assist with drill targeting.

Koonenberry Gold has a diverse portfolio of high-quality gold and copper projects in highly prospective areas of NSW and plans to prioritise programs to maximise value for its shareholders. The Company looks forward to providing regular exploration updates as this work progresses.



This ASX release was authorised by the Board of the Company.

For more information please contact:

Dan Power
Managing Director
+61 8 6245 9869

info@koonenberrygold.com.au

Nathan Ryan
Investor Relations
+61 420 582 887

nathan.ryan@nwrcommunications.com.au

For further information regarding the Company and its Projects please visit www.koonenberrygold.com.au

-ENDS-

ABOUT KOONENBERRY GOLD

Koonenberry Gold Ltd is a minerals explorer aiming to create value for shareholders through the discovery of Gold and Copper across its diverse portfolio of highly prospective and strategically located projects. These projects cover an area of 4,360 km² making it one of the most significant exploration portfolios in NSW. The Company's main focus is the Enmore Gold Project, which is at an exciting discovery phase with drilling returning broad intervals of gold mineralisation extending from surface as well as high-grade gold zones at depth.

100% Owned Projects	
Au Enmore (EL8479 & EL9747; 302km²) <ul style="list-style-type: none"> 20km Sth of 1.7Moz Hillgrove Au Mine 174m @ 1.83g/t Au from 0m (OSSRC06) 172m @ 2.07g/t Au from 171m (25ENDD02) Emerging gold discovery 	Cu/Au Breakfast Creek (EL9313; 392km²) <ul style="list-style-type: none"> 55km Sth of Cadia Cu-Au Mine +6km Cu-Au soil anomaly 7.02g/t Au, 1.96% Cu; 3.4g/t Au, 1.1% Cu; 0.5g/t Au, 18.5% Cu rocks
Au Prince of Wales (EL9533; 11km²) <ul style="list-style-type: none"> Historical shafts and workings (170m deep) 4.0km long structural trend Very limited drilling 	Cu/Au Bournewood (EL9137; 43km²) <ul style="list-style-type: none"> 40km SW of 7.3Moz Boda-Kaiser deposit 13.3g/t Au and 5.7% Cu rock chips Numerous historical workings
Au Wilga (EL9272; 272km²) <ul style="list-style-type: none"> 20km NNW of 13Moz Cowal Au Mine Gold mineralisation at EL Boundary +4km Carbonate-Base Metal (CBM) trend Untested by drilling 	Cu Brungle (EL9532; 157km²) <ul style="list-style-type: none"> Significant scale BHP stream sediment Cu 8.43g/t Au & 1.37% Cu rock chips Large ovoid shaped magnetic anomalies
Au Temora South (EL8895; 110km²) <ul style="list-style-type: none"> 16km Sth of 1.4Moz Gidginbung Au-Cu Mine 12.7g/t Au, 4.98g/t Au, 1.65g/t Au rocks 4m @ 1.93g/t Au to EOH (roadside RAB) 	Cu Darby's Ridge (EL8876; 72km²) <ul style="list-style-type: none"> Intrusion related Cu/Au Large >2km Au-Cu Air Core anomaly Bullseye mag high + chargeability anomalies
Au Dunedoo (EL9138; 96km²) <ul style="list-style-type: none"> 65km Nth of 491Moz Ag Eq Bowdens deposit +8km Au soil anomaly (>10ppb Au) 1.24g/t Au, 12g/t Ag rock chip Untested by drilling 	Au/Cu Koonenberry (16 ELs; 2,478km²) <ul style="list-style-type: none"> Highly prospective and underexplored Abundant evidence for Au (200km² nuggets) Pipeline of projects with 34km Au soils Multi million ounce Au potential

Farm-in and Joint Venture Projects (Newmont Exploration Manager)	
Cu/Au Junee JV (EL8470; 256km²) <ul style="list-style-type: none"> Unusually fertile segment of Macquarie Arc ² 25x Targets; 4x alkalic porphyry systems 224m @ 0.19% Cu, 0.2g/t Au from 172m \$23.9M spent to date 	Cu Fairholme JV (EL9467; 169km²) <ul style="list-style-type: none"> Large igneous complex (Phase 4) Cover of only 36-150m Northparkes-style "doughnut" mag features Cu/Au in Air Core (>0.1g/t Au, >500ppm Cu)

Capital Structure (ASX:KNB)			
1,025M Shares on issue ASX:KNB	~51.5M Market Cap As at 16/07/2025	\$8.7M Cash As at 30/06/2025	53% Top 20



² Alan Wilson, 2022.

TENEMENTS

Koonenberry Project

Licence Number	Area (km ²)*	Location	Title Holder	Equity Interest
EL6803	156.22	NSW	Laseter Gold Pty Ltd	100%
EL6854	59.02	NSW	Laseter Gold Pty Ltd	100%
EL7635	23.60	NSW	Laseter Gold Pty Ltd	100%
EL7651	47.20	NSW	Laseter Gold Pty Ltd	100%
EL8245	88.50	NSW	Laseter Gold Pty Ltd	100%
EL8705	5.90	NSW	Laseter Gold Pty Ltd	100%
EL8706	295.37	NSW	Laseter Gold Pty Ltd	100%
EL8819	168.36	NSW	Laseter Gold Pty Ltd	100%
EL8918	162.64	NSW	Laseter Gold Pty Ltd	100%
EL8919	277.25	NSW	Laseter Gold Pty Ltd	100%
EL8949	23.62	NSW	Laseter Gold Pty Ltd	100%
EL8950	32.47	NSW	Laseter Gold Pty Ltd	100%
EL9491	372.16	NSW	Laseter Gold Pty Ltd	100%
EL9492	321.66	NSW	Laseter Gold Pty Ltd	100%
EL9493	26.22	NSW	Laseter Gold Pty Ltd	100%
EL9225	417.70	NSW	Gilmore Metals Pty Ltd	100%

Table 1. Koonenberry Gold's 100% owned subsidiaries Laseter Gold Pty Ltd and Gilmore Metals Pty Ltd own a 100% interest in sixteen (16) granted tenements making up the Koonenberry Gold Project.

*Area is calculated from the ellipsoid, not planimetric.

Enmore Gold Project

Licence Number	Name	Area (km ²)	Location	Title Holder	Equity Interest
EL8479	Enmore	134.22	NSW	Enmore Gold Pty Ltd	100%
EL9747	Enmore Regional	167.72	NSW	Enmore Gold Pty Ltd	100%

Table 2. Koonenberry Gold's 100% interest in the Enmore Gold Project.

Lachlan Project

Licence Number	Name	Area (km ²)*	Location	Title Holder	Equity Interest	Conditions
EL8895	Temora South	110.35	NSW	Gilmore Metals Pty Ltd	100%	
EL9313	Breakfast Creek	392.25	NSW	Gilmore Metals Pty Ltd	100%	
EL9533	Gundagai	11.25	NSW	Gilmore Metals Pty Ltd	100%	
EL9532	Brungle	156.92	NSW	Gilmore Metals Pty Ltd	100%	
EL9138	Dunedoo	96.03	NSW	Gilmore Metals Pty Ltd	100%	
EL8876	Darby's Ridge	71.83	NSW	Gilmore Metals Pty Ltd	100%	
EL9137	Bournewood	43.35	NSW	Gilmore Metals Pty Ltd	100%	0.5% NSR
EL9272	Wilga Flats	272.42	NSW	Gilmore Metals Pty Ltd	100%	0.5% NSR
EL9467	Fairholme	169.43	NSW	Gilmore Metals Pty Ltd	51%	
EL8470	Junee	256.29	NSW	Newmont Exploration Pty Ltd	20%	

Table 3. Gilmore Metals Pty. Ltd. owns a 100% interest in eight (8) granted tenements as set out above.

Newmont Exploration Pty Ltd has earned an 80% interest in the Junee project (EL8470) and is currently in the earn in phase through a farm-in and joint venture agreement on the Fairholme project (EL9467). In addition, Newmont Exploration Pty Ltd holds a 0.5% NSR on the Bournewood (EL9137) and Wilga Flat (EL9272) Projects. Koonenberry Gold owns 100% of Gilmore Metals Pty. Ltd.

DATA TABLES

<i>Prospect</i>	<i>Sample ID</i>	<i>Sample type</i>	<i>MGA Easting</i>	<i>MGA Northing</i>	<i>Au (g/t)</i>	<i>As (ppm)</i>	<i>Sb (ppm)</i>
Postman's Gully	ER0028	Mullock	390050	6598125	14.05	14700	109.5
Postman's Gully	ER0027	Mullock	390050	6598126	11.90	9440	91.6
Postman's Gully	ER0031	Mullock	390060	6598134	8.77	13000	99.4
Postman's Gully	ER0032	Mullock	390094	6598282	6.63	7330	65.2
Postman's Gully	ER0029	Mullock	390051	6598125	5.95	4290	67.5
Postman's Gully	ER0022	Mullock	390054	6598125	5.76	11750	84.2
Postman's Gully	ER0030	Mullock	390051	6598126	5.68	9500	72.9
Postman's Gully	ER0026	Mullock	390096	6598280	5.65	2140	27.6
Postman's Gully	ER0033	Mullock	390094	6598285	4.63	9330	70.5
Postman's Gully	ER0037	Mullock	390117	6598160	3.88	4880	82.5
Postman's Gully	ER0023	Mullock	390062	6598133	3.37	7100	50.6
Postman's Gully	ER0025	Mullock	390098	6598279	3.31	2500	29.7
Postman's Gully	ER0024	Mullock	390095	6598275	3.26	2230	32.5
Postman's Gully	ER0034	Mullock	390269	6598255	2.78	1830	26.9
Postman's Gully	ER0038	Mullock	390119	6598161	2.74	7500	57.8
Postman's Gully	ER0039	Mullock	390116	6598162	2.31	6200	45.7
Postman's Gully	ER0035	Mullock	390211	6598168	2.09	2270	33.9
Postman's Gully	ER0036	Mullock	390206	6598327	1.79	1460	20.3
Postman's Gully	ER0021	Mullock	389849	6598168	0.77	920	21.1

Table 4. All recent gold, arsenic and antimony assays in rock chips at Postman's Gully (19 samples total).

<i>Sample ID</i>	<i>Sample type</i>	<i>MGA Easting</i>	<i>MGA Northing</i>	<i>Au (ppb)</i>
ES00475	Soil	390100	6598162	364
ES00582	Soil	390165	6598287	161.5
ES00527	Soil	389935	6597887	112.5
ES00514	Soil	390018	6598236	99.6
ES00590	Soil	389564	6598022	75.9
ES00614	Soil	389427	6597972	71.2
ES00591	Soil	389587	6597973	47.2
ES00503	Soil	390121	6598272	43.2
ES00557	Soil	389817	6598057	40.4

Table 5. Significant recent gold in soil assays at Postman's Gully. Gold results from a population of 181 samples range from <0.1ppb to 364ppb Au, with a mean of 10.7ppb Au, Standard Deviation of 32.7ppb Au and 95th percentile value of 38.8ppb Au.

Sample ID	Sample type	MGA Easting	MGA Northing	As (ppm)
ES00582	Soil	390165	6598287	414
ES00536	Soil	389756	6598088	237
ES00503	Soil	390121	6598272	198.5
ES00558	Soil	389800	6598106	168
ES00556	Soil	389832	6598011	145.5
ES00559	Soil	389784	6598150	127
ES00489	Soil	389955	6598267	123.5
ES00557	Soil	389817	6598057	122.5
ES00535	Soil	389739	6598139	118.5

Table 6. Significant recent arsenic in soil assays at Postman's Gully. Arsenic results from a population of 181 samples range from 1.69ppm to 414ppm As, with a mean of 35.0ppm As, Standard Deviation of 49.4ppm As and 95th percentile value of 116.0ppm As.

Sample ID	Sample type	MGA Easting	MGA Northing	Sb (ppm)
ES00536	Soil	389756	6598088	13.8
ES00557	Soil	389817	6598057	12.8
ES00537	Soil	389773	6598040	11.75
ES00523	Soil	389943	6598155	10.8
ES00442	Soil	390242	6598215	10.2
ES00574	Soil	389631	6597988	10.1
ES00558	Soil	389800	6598106	9.68
ES00582	Soil	390165	6598287	9.12
ES00512	Soil	390053	6598145	8.98

Table 7. Significant recent antimony in soil assays at Postman's Gully. Antimony results from a population of 181 samples range from 0.24ppm to 13.8ppm Sb, with a mean of 3.0ppm Sb, Standard Deviation of 2.8ppm Sb and 95th percentile value of 8.9ppm Sb.

Prospect	Hole ID	Easting	Northing	mAHD	Azi. (True Nth)	Dip	Depth (m)
Sunnyside	25ENDD001	388837.13	6596429.00	938.79	55	-55	294.4
Sunnyside	25ENDD002	388814.03	6596411.99	940.39	55	-55	380
Sunnyside	25ENDD003	388868.91	6596643.01	953.75	160	-55	351
Sunnyside	25ENDD004	388983.67	6596575.53	946.26	235	-55	398.1
Sunnyside	25ENDD005	389034.22	6596615.57	950.90	235	-55	431.4
Sunnyside	25ENDD006	388827.37	6596636.33	958.79	160	-55	309.4
Sunnyside	25ENDD007	388805.00	6596580.12	951.29	160	-55	254.8
Sunnyside	25ENDD008	388760.46	6596574.00	958.16	160	-55	279.2
Sunnyside	25ENDD009	388734.42	6596557.26	959.24	160	-55	264.2
Sunnyside	25ENDD010	388699.65	6596539.29	958.88	160	-55	270.1

Table 8 – 2025 Enmore Gold Project Drill Hole Collar locations and orientation.

Prospect	Hole ID	Easting	Northing	mAHD	Azi. (True Nth)	Dip	Depth (m)
Postman's Gully	PP1	389837	6598141	926	161	-60	56
Postman's Gully	PP2	389871	6597998	933	153	-60	96
Postman's Gully	PP3	389787	6597921	931	161	-60	102

Table 9 – Historical Enmore Gold Drill Hole Collar locations and orientation at Postman's Gully (Lewington, 1984). No intersections >2g/t Au x m with a 0.2g/t Au cut off were returned.

REFERENCES

- 17/10/2024 (ASX:KNB). Transformational acquisition of exciting NSW Au and CuAu portfolio.
 - 29/11/2024 (ASX:KNB). Koonenberry Gold completes acquisition of Enmore Gold and Lachlan Projects in NSW.
 - 24/01/2025 (ASX:KNB). Quarterly Report for the period ending 31 December 2024.
 - 11/02/2025 (ASX:KNB). KNB commences drilling at Enmore Gold Project.
 - 13/02/2025 (ASX:KNB). Placement to accelerate Exploration at Enmore & Lachlan.
 - 19/02/2025 (ASX:KNB). Multiple zones of visible gold in first drill hole at Enmore.
 - 25/02/2025 (ASX:KNB). KNB expands Enmore Gold Project, NSW securing gold-antimony targets.
 - 26/02/2025 (ASX:KNB). KNB intersects visible gold in second drill hole at Enmore.
 - 17/03/2025 (ASX:KNB). More gold zones identified at Enmore Gold Project, NSW.
 - 02/04/2025 (ASX:KNB). KNB returns 170m @ 1.75g/t gold including 18.3m at 9.95g/t gold from first drillhole.
 - 14/04/2025 (ASX:KNB). KNB returns 172.9m @ 2.07g/t gold including 25m at 5.23g/t gold from second drillhole.
 - 16/04/2025 (ASX:KNB). Quarterly Report for the period ending 31 March 2025.
 - 23/04/2025 (ASX:KNB). KNB intersects multiple zones of visible gold in fifth drill hole at Enmore.
 - 29/04/2025 (ASX:KNB). Enmore third hole returns 102m @ 1.10g/t gold including 9.7m at 3.57g/t gold.
 - 30/04/2025 (ASX:KNB). KNB intersects multiple zones of visible gold in sixth drill hole at Enmore.
 - 13/05/2025 (ASX:KNB). KNB expands Sunnyside gold system to more than 230m strike.
 - 20/05/2025 (ASX:KNB). KNB returns 149.5m at 0.94g/t Au in fourth drillhole at Enmore Project.
 - 22/05/2025 (ASX:KNB). Domestic and international institutional placement to accelerate exploration plans including +10,000m of drilling at Enmore.
 - 06/06/2025 (ASX:KNB). KNB returns 150m at 0.71g/t Au in fifth drillhole at Enmore Project.
 - 23/06/2025 (KNB:ASX). KNB returns 80.5m at 1.45g/t Au in sixth drillhole at Enmore Project.
 - 24/06/2025 (KNB:ASX). KNB extends Sunnyside Prospect by 1.6km to over 2km strike potential.
 - 21/07/2025 (ASX:KNB). Quarterly Report for the period ending 30 June 2025.
-
- 05/08/2024 (ASX:LRV). Hillgrove Gold-Antimony Project Pre-Feasibility Study including Maiden Ore Reserve.
 - Alan Wilson, 2022. GeoAqua Consultants Ltd, Internal Report for Gilmore Metals.
 - Banks, M., 2010. Enmore Gold Project, NSW, Australia. Technical review of geology, mineralisation and potential for Olympus Pacific Minerals inc.
 - Downes, P. M., 2017. A mineral system model for orogenic Au and Au-Sb deposits in the southern New England.
 - Phillips, G. N. (Ed), 2017. Australian Ore Deposits (The Australasian Institute of Mining and Metallurgy: Melbourne).

DATA SOURCES

1. Lewington, G., 1984. EL1697 – Enmore, NSW, Six-Monthly report for the period ending 17 February 1984. Getty Oil Development Company Ltd. R00014531.

Competent Persons Statement

The information in this announcement that relates to Exploration Results is based on information compiled under the supervision of Mr Paul Wittwer, who holds a BSc Geology (Hons.), is a Member of the Australian Institute of Geoscientists (AIG) and the Australian Institute of Mining and Metallurgy (AusIMM) and is the Exploration Manager of Koonenberry Gold Limited. Mr Wittwer has sufficient experience that is relevant to the style of mineralisation and type of deposit under consideration and to the activity which he is undertaking to qualify as a Competent Person as defined in the 2012 Edition of the 'Australasian Code for Reporting Exploration Results, Mineral Resources and Ore Reserves.' Mr Wittwer consents to the inclusion in this report of the matter based on his information in the form and context in which it appears. Where reference is made to previous announcements of exploration results in this announcement concerning the Company's projects, the Company confirms that it is not aware of any new information or data that materially affects the information and results included in those announcements. The information in this announcement that relates to the previous exploration results have been cross referenced to the original announcement or are from the announcements listed in the references table.

Forward looking statements

This announcement may include forward looking statements and opinion. Often, but not always, forward looking statements can be identified by the use of forward looking words such as "may", "will", "expect" "intend", "plan", "estimate", "anticipate", "continue", "outlook" and "guidance" or other similar words and may include, without limitation, statements regarding plans, strategies and objectives of management, anticipated production or construction commencement dates and expected costs or production outputs. Forward looking statements are based on Koonenberry and its Management's good faith assumptions relating to the financial, market, regulatory and other relevant environments that will exist and affect Koonenberry's business and operations in future. Koonenberry does not give any assurance that the assumptions on which forward looking statements are based will prove to be correct, or that Koonenberry's business or operations will not be affected in any material manner by these or other factors not foreseen or foreseeable by Koonenberry or Management or beyond Koonenberry's control. Although Koonenberry attempts and has attempted to identify factors that would cause actual actions, events or results to differ materially from those disclosed in forward looking statements, there may be other factors that could cause actual results, performance, achievements or events not to be as anticipated, estimated or intended, and many events are beyond the reasonable control of Koonenberry. Accordingly, readers are cautioned not to place undue reliance on forward looking statements. Forward looking statements in these materials speak only at the date of issue. Subject to any continuing obligations under applicable law in providing this information Koonenberry does not undertake any obligation to publicly update or revise any of the forward-looking statements or to advise of any changes in events, conditions, or circumstances on which any such statement is based.

Cautionary statement on visual estimates of mineralisation

Any references in this announcement to visual results are from visual estimates by qualified geologists. Laboratory assays are required for representative estimates of quantifiable elemental values. Visual estimates of mineral abundance should never be considered a proxy or substitute for laboratory analyses where concentrations or grades are the factor of principal economic interest. Visual estimates also potentially provide no information regarding impurities or deleterious physical properties relevant to valuations.

Proximate statements

This announcement may contain references to Mineral Resources, mines and exploration projects of other parties either nearby or proximate to Koonenberry Gold's projects and/or references that may have topographical or geological similarities to Koonenberry Gold's projects, the Enmore Gold project and / or Lachlan projects. It is important to note that such discoveries or geological similarities do not in any way guarantee that the Company will have any success at all or similar successes in delineating a Mineral Resource on any of Koonenberry Gold's projects, the Enmore Gold project and / or Lachlan projects.

**APPENDIX 1. JORC CODE TABLE 1 Checklist of Assessment and Reporting Criteria
- Enmore Gold Project (EL 8479)**
Section 1: Sampling Techniques and Data

Criteria	JORC Code explanation	Commentary
Sampling techniques	<ul style="list-style-type: none"> Nature and quality of sampling (e.g. cut channels, random chips, or specific specialised industry standard measurement tools appropriate to the minerals under investigation, such as down hole gamma sondes, or handheld XRF instruments, etc). These examples should not be taken as limiting the broad meaning of sampling. 	<ul style="list-style-type: none"> Diamond drilling was conducted to obtain core which was cut lengthways in half 1cm offset to the right of core orientation lines (viewed downhole) where available, otherwise along nominal cut lines. Samples were pulverised to 85% passing 75 microns. Soil Sampling involved digging a hole ~300mm deep and sampling the material below that depth by sieving the -3mm fraction in the field to produce a sample of about 250g for analysis. Rock Chip sampling was completed by sampling an outcrop or mullock dump with a hammer to produce multiple pieces of rock in each sample. <p>Historical Drilling</p> <ul style="list-style-type: none"> No references witnessed to historic sampling techniques or procedures for drilling by Getty Oil Development Company, Warren Jay Holdings Pty Ltd or Zedex Minerals Ltd. No value-add technologies were reported to have been used on drilling samples. No photographs of drill core or percussion samples have been located.
	<ul style="list-style-type: none"> Include reference to measures taken to ensure sample representivity and the appropriate calibration of any measurement tools or systems used. 	<ul style="list-style-type: none"> Where possible, the same side of the diamond half core was submitted for assay. <p>Historical Drilling</p> <ul style="list-style-type: none"> Getty Oil and Providence generally sampled at 2m intervals over the whole hole.
	<ul style="list-style-type: none"> Aspects of the determination of mineralisation that are Material to the Public Report. 	<ul style="list-style-type: none"> Determination of mineralisation from Koonenberry work was through appropriate geological logging of samples by the geologist responsible.
	<ul style="list-style-type: none"> In cases where 'industry standard' work has been done this would be relatively simple (e.g. 'reverse circulation drilling was used to obtain 1 m samples from which 3 kg was pulverised to produce a 30 g charge for fire assay'). In other cases more explanation may be required, such as where there is coarse gold that has inherent sampling problems. Unusual commodities or mineralisation types (e.g. submarine nodules) may warrant disclosure of detailed information. 	<ul style="list-style-type: none"> Industry standard sampling procedures were completed in the recent Koonenberry drilling. Coarse and refractory gold issues throughout the Project are sufficient to warrant check sampling with fire assay techniques. Koonenberry has conducted Screen Fire Assays where visible gold was observed and if samples return >1g/t from the original Fire Assay. Soil & Rock Chip sampling was completed with industry standard methods

Criteria	JORC Code explanation	Commentary
Drilling techniques	<ul style="list-style-type: none"> • <i>Drill type (e.g. core, reverse circulation, open-hole hammer, rotary air blast, auger, Bangka, sonic, etc) and details (e.g. core diameter, triple or standard tube, depth of diamond tails, face-sampling bit or other type, whether core is oriented and if so, by what method, etc).</i> 	<ul style="list-style-type: none"> • Koonenberry Diamond drilling completed by Ophir Drilling using a track mounted rig to obtain PQ3 and HQ3 core (triple tube). <p>Historical Drilling</p> <ul style="list-style-type: none"> • 9 holes for 1,599.5m by Getty Oil Development Company in 1983-84 by Getty Oil Development Company. HQ precollar reducing to NQ. No references found to oriented core. • Percussion drilling by Getty is not clearly referenced, though commentary in reports is suggestive of open hole percussion. 41 holes for 4,192m, average 102m. • 16 holes for 1,994.7m by Zedex Minerals Limited in 2004-06 using a UDR650 track mounted rig. Core diameter not referenced. No references found to oriented core or evidence of orientations in core photos. Reverse Circulation (RC) drilling Warren Jay Holdings; 143 holes for 3,232m, average 22.6m. Conducted using a 10cm button bit on Sullair Sullitrack Mk2, possibly open hole hammer.
Drill sample recovery	<ul style="list-style-type: none"> • <i>Method of recording and assessing core and chip sample recoveries and results assessed.</i> <ul style="list-style-type: none"> • <i>Measures taken to maximise sample recovery and ensure representative nature of the samples.</i> 	<ul style="list-style-type: none"> • Each core run is recorded in diamond drilling as end of run depth, drilled metres, recovered metres. Triple tube drilling undertaken to maximise core recovery in broken zones. <p>Historical Drilling</p> <p>Diamond Drilling:</p> <ul style="list-style-type: none"> • Getty: Core recovery visually estimated. Recoveries were generally 100% but do dip periodically, showing it was faithfully recorded. <p>RC & Percussion:</p> <ul style="list-style-type: none"> • No firm details were found on percussion sampling procedure. • Getty mentioned strict sampling procedures. <p>Warren Jay Holdings referred to early termination of some holes when water was intercepted.</p> <ul style="list-style-type: none"> • Triple tube drilling undertaken by Koonenberry to maximise core recovery in broken zones. • No measures to ensure representivity were reported from historical drilling.

For personal use only

Criteria	JORC Code explanation	Commentary
	<ul style="list-style-type: none"> Whether a relationship exists between sample recovery and grade and whether sample bias may have occurred due to preferential loss/gain of fine/coarse material. 	<ul style="list-style-type: none"> No study has been undertaken to ascertain any sample recovery or bias issues.
Logging	<ul style="list-style-type: none"> Whether core and chip samples have been geologically and geotechnically logged to a level of detail to support appropriate Mineral Resource estimation, mining studies and metallurgical studies. 	<ul style="list-style-type: none"> No Mineral Resource estimation, mining studies or metallurgical studies have been conducted at this stage. All core is geologically logged with lithologies, alteration, mineralisation, veining, structures, geotech, recovery and bulk density recorded. <p>Historical Drilling</p> <ul style="list-style-type: none"> Getty: All drilling logged qualitatively in handwritten descriptions grouped by domains, with quantitative assessment of sulfide and quartz content. No geotechnical logging. Zedex & Warren Jay Holdings: Lithological drill logging was completed.
	<ul style="list-style-type: none"> Whether logging is qualitative or quantitative in nature. Core (or costean, channel, etc) photography. 	<ul style="list-style-type: none"> Geological logging was qualitative in nature.
	<ul style="list-style-type: none"> The total length and percentage of the relevant intersections logged. 	<ul style="list-style-type: none"> The entire length of all Koonenberry holes were logged.
Sub-sampling techniques and sample preparation	<ul style="list-style-type: none"> If core, whether cut or sawn and whether quarter, half or all core taken. 	<ul style="list-style-type: none"> Core was cut using a diamond saw and half core was sent for assay. <p>Historical Drilling</p> <ul style="list-style-type: none"> No photographs of drill core or percussion samples have been located except for certain select ranges of Zedex diamond and percussion drilling. Photographs of Zedex core evidence that core was sawn and half core sent for analysis.
	<ul style="list-style-type: none"> If non-core, whether riffled, tube sampled, rotary split, etc and-whether sampled wet or dry. 	<p>Historical Drilling</p> <ul style="list-style-type: none"> Industry standard sampling procedures at the time are assumed but have not yet been confirmed. Photographs of Zedex percussion drill sites evidence that samples were collected through a cyclone, but sample reduction and compositing methods are unknown.
	<ul style="list-style-type: none"> For all sample types, the nature, quality and appropriateness of the sample preparation technique. 	<ul style="list-style-type: none"> Koonenberry drilling samples are pulverised at ALS to a QC size specification of 85% <75µm. No references have been found to sampling preparation for historical results
	<ul style="list-style-type: none"> Quality control procedures adopted for 	<ul style="list-style-type: none"> Pulverised samples are rotary split

Criteria	JORC Code explanation	Commentary
	<p><i>all sub-sampling stages to maximise representivity of samples.</i></p> <ul style="list-style-type: none"> <i>Measures taken to ensure that the sampling is representative of the in-situ material collected, including for instance results for field duplicate/second-half sampling.</i> <i>Whether sample sizes are appropriate to the grain size of the material being sampled.</i> 	<p>using a Boyd Rotary Splitter</p> <ul style="list-style-type: none"> Duplicates were inserted every 50 samples No references have been found for QAQC methods for historical results Sample size for Koonenberry drilling is appropriate. No references have been found for sample sizes for historical results.
<p>Quality of assay data and laboratory tests</p>	<ul style="list-style-type: none"> <i>The nature, quality and appropriateness of the assaying and laboratory procedures used and whether the technique is considered partial or total.</i> 	<ul style="list-style-type: none"> Samples were sent to ALS Brisbane and then ALS Perth which is an ISO/IEC 17025:2005 and ISO9001:2015 certified laboratory. All drill samples were analysed for Au using a 50g Fire Assay with an AAS finish (Au-AA26), with a detection limit range of 0.01ppm to 100ppm Au. All zones with visible gold (and samples returning >1g/t in original Fire Assay) were analysed for Au using a 1kg Screen Fire Assay (Au_SCR24), where a 1kg pulp is dry screened to 106 microns and a duplicate 50g assay on screen undersize and an assay of entire oversize fraction is performed and then combined with the undersize fraction to produce an overall total assay. This method ensures that both coarse and fine gold are accurately quantified, providing a comprehensive assessment of the gold content. Detection limit range for Au is 0.05 to 100,000ppm. A multi-element Ultra Trace method is completed on selected drill core and Rock Chips, utilising a four-acid digest with ICP-MS (ALS method ME-MS61), for analysis of a suite of other economic and pathfinder elements. Soils were analysed via ALS method AuME-ST44 (50g sample) with aqua-regia extraction and an ICP-MS finish. This method provides assay data for 52 elements in addition to gold at trace levels (>0.1ppb), ideal for identifying subtle soil geochemical trends that may be missed via other methods. Upper detection limit is 1ppm, with any overlimit samples assayed by Aqua Regia and ICP-MS finish (ALS method Au-AROR44). The nature of the laboratory assay sampling techniques is considered

For personal use only

Criteria	JORC Code explanation	Commentary
		<p>'industry standard' and appropriate.</p> <p>Historical Drilling</p> <ul style="list-style-type: none"> • Getty: submitted drill samples for analysis to COMLABS Pty Ltd, a NATA certified lab, analysing Au by AAS and As by XRF. • Zedex submitted drill samples for analysis to ALS Brisbane. Analysed by Au-TL43 (Aqua regia, ICPMS finish, Trace level Au, 25g), then by Au-OG43 where Au>1g/t (Aqua regia, ICPMS finish, Intermediate grade level, 25g). Where Au >1g/t, also analysed by Au-AA25 (ore grade 3g fire assay, AAS finish). Multi-elements by ME-ICP41s (Aqua-regia with ICP-AES finish, 0.5g sample) for Ag, As, Bi, Cd, Co, Cu, Fe, Mn, Mo, Ni, P, Pb, S, Sb, Zn. Then by ME-OG49 (ore grade) where Ag>100ppm, or As, Cu, Pb or Zn >1,000ppm.
	<ul style="list-style-type: none"> • <i>For geophysical tools, spectrometers, handheld XRF instruments, etc, the parameters used in determining the analysis including instrument make and model, reading times, calibrations factors applied and their derivation, etc.</i> 	<ul style="list-style-type: none"> • No geophysical, spectral or handheld XRF tools have been reported being used on samples or core.
	<ul style="list-style-type: none"> • <i>Nature of quality control procedures adopted (e.g. standards, blanks, duplicates, external laboratory checks) and whether acceptable levels of accuracy (i.e. lack of bias) and precision have been established.</i> 	<ul style="list-style-type: none"> • Standards and blanks were incorporated into each sample batch at a rate of 1 in 25 samples. • No references found for Sample quality, sample interval, sample number and QA/QC inserts (standards, duplicates, blanks) for historical sampling.
Verification of sampling and assaying	<ul style="list-style-type: none"> • <i>The verification of significant intersections by either independent or alternative company personnel.</i> 	<ul style="list-style-type: none"> • Significant intersections/results in this ASX Release have been verified from the source data by the Competent Person and alternative company personnel.
	<ul style="list-style-type: none"> • <i>The use of twinned holes.</i> 	<ul style="list-style-type: none"> • N/A
	<ul style="list-style-type: none"> • <i>Documentation of primary data, data entry procedures, data verification, data storage (physical and electronic) protocols.</i> 	<ul style="list-style-type: none"> • Primary data was collected on digital devices and stored on company cloud server. • No documentation of primary data procedures from historical drilling has been identified. All available historical raw data is publicly available data.
	<ul style="list-style-type: none"> • <i>Discuss any adjustment to assay data.</i> 	<ul style="list-style-type: none"> • No adjustments have been made to the assay data.
Location of data points	<ul style="list-style-type: none"> • <i>Accuracy and quality of surveys used to locate drill holes (collar and down-hole surveys), trenches, mine workings and other locations used in Mineral Resource estimation.</i> 	<ul style="list-style-type: none"> • All drill holes were sited with a standard Garmin GPS with an Easting and Northing accuracy of approximately +/- 5m and then collars later surveyed with a DGPS.

Criteria	JORC Code explanation	Commentary
		<p>Down hole surveys measured using a Reflex north seeking gyro instrument.</p> <p>Historical Drilling</p> <ul style="list-style-type: none"> • Getty Oil: No reference to datum on maps, though AMG is listed, so datum can be assumed as AGD66. Drillhole azimuth listed in magnetic bearing on logs. Topographic control not referenced. Grids were constructed in key prospect areas so can assume at minimum there was a consistent locational and topographic control for drilling through the local surveyed grid. Accuracy assumed to be ±20m. • Warren Jay Holdings: No details of datum, survey or topographic control have been witnessed yet. • Zedex: post-drilling collar survey using high resolution professional surveying, Datum AGD84.
	<ul style="list-style-type: none"> • <i>Specification of the grid system used.</i> 	<ul style="list-style-type: none"> • The grid system used is Universal Transverse Mercator (UTM) GDA94 MGA Zone 56 for Koonenberry drilling has been converted to this grid.
	<ul style="list-style-type: none"> • <i>Quality and adequacy of topographic control.</i> 	<ul style="list-style-type: none"> • Collars were used for topographic control in combination with Government LiDAR data.
Data spacing and distribution	<ul style="list-style-type: none"> • <i>Data spacing for reporting of Exploration Results.</i> 	<ul style="list-style-type: none"> • Drilling spacing varied depending on the target, but no resource is being reported.
	<ul style="list-style-type: none"> • <i>Whether the data spacing and distribution is sufficient to establish the degree of geological and grade continuity appropriate for the Mineral Resource and Ore Reserve estimation procedure(s) and classifications applied.</i> 	<ul style="list-style-type: none"> • No Mineral Resource or Ore Reserve have been estimated.
	<ul style="list-style-type: none"> • <i>Whether sample compositing has been applied.</i> 	<ul style="list-style-type: none"> • No compositing of assay data has been applied.
Orientation of data in relation to geological structure	<ul style="list-style-type: none"> • <i>Whether the orientation of sampling achieves unbiased sampling of possible structures and the extent to which this is known, considering the deposit type.</i> 	<ul style="list-style-type: none"> • Holes 25ENDD001-002 & 25ENDD004-005 were oriented sub-parallel to the interpreted Sunnyside East strike direction (east northeast trend). This may introduce a sampling bias, producing mineralised intervals broader in apparent thickness. The rationale was to intersect interpreted high grade cross-cutting NNW structures. It remains unclear which direction is the most ideal for drilling. <p>Historical Drilling</p> <ul style="list-style-type: none"> • Most drilling outside Bora seems to have been optimized for NE trending, generally NW dipping lode structures. Angle of drilling to higher grade mineralised structures at

Criteria	JORC Code explanation	Commentary
		these other prospects is unclear.
	<ul style="list-style-type: none"> If the relationship between the drilling orientation and the orientation of key mineralised structures is considered to have introduced a sampling bias, this should be assessed and reported if material. 	<ul style="list-style-type: none"> Drill testing is too early stage to determine if the drilling orientation has introduced a sampling bias.
Sample security	<ul style="list-style-type: none"> The measures taken to ensure sample security. 	<ul style="list-style-type: none"> Samples from Koonenberry drilling were transported to the laboratory using reputable registered freight. No references have been found to procedures for sample security for the historical samples.
Audits or reviews	<ul style="list-style-type: none"> The results of any audits or reviews of sampling techniques and data. 	<ul style="list-style-type: none"> No audit or reviews were completed of the Koonenberry Drilling. No historic audits have been described in reports.

Section 2: Reporting of Exploration Results

Criteria	JORC Code explanation	Commentary
Mineral tenement and land tenure status	<ul style="list-style-type: none"> Type, reference name/number, location and ownership including agreements or material issues with third parties such as joint ventures, partnerships, overriding royalties, native title interests, historical sites, wilderness or national park and environmental settings. 	<ul style="list-style-type: none"> Exploration Licence (EL) 8479 held by Enmore Gold Pty Ltd, owned by Koonenberry Gold Ltd. Granted 21 October 2016, renewed in 2021 and 2023 and expiring on 21 October 2029 whereon it is eligible for renewal. There are no known Native Title interests in relation to the Property. No royalty interests are in place.
	<ul style="list-style-type: none"> The security of the tenure held at the time of reporting along with any known impediments to obtaining a licence to operate in the area. 	<ul style="list-style-type: none"> The tenement is current and in good standing.
Exploration done by other parties	<ul style="list-style-type: none"> Acknowledgment and appraisal of exploration by other parties. 	<ul style="list-style-type: none"> Previous exploration has been conducted by Silver Valley (1974) with Diamond drilling. Getty Oil (1983-84). DD and percussion drilling. Mapping, surface sampling. Good systematic investigative work. Getty concluded the lateral and width dimensions (of the old mine workings) were limited and would not deliver their target of $\pm 5\text{Mt}$ @ 3g/t (482k oz) Au open-pittable and withdrew. Significant drill intercepts (especially BSD5) were not adequately followed-up. Costean and soil sampling was effective at locating exposed mineralisation at a coarse scale. IP surveying demonstrated potential of electrical geophysical methods on this mineralisation style. Warren Jay Holdings (1996-97) drilled 143 holes, at an average depth of 22m testing for open pittable oxide resources. This work defined the oxide mineralisation potential at Sunnyside, but has not contributed more to definition of mineral potential or underground extraction

Criteria	JORC Code explanation	Commentary
		<p>potential elsewhere on the Property.</p> <ul style="list-style-type: none"> • Zedex Minerals Ltd (for Providence Gold & Minerals Pty Ltd) drilled 16 diamond holes at an average 124m depth. Many the holes were partially sampled, including in positions where structures were interpreted to intersect. Additional possible commercial commodities (W & Sb) have not been analysed. Vectoring is not possible with available data. • Providence Gold and Minerals Pty Ltd, formerly Warren Jay Holdings Pty Ltd (1994-2022), have completed extensive soil sampling to identify extensive mineral potential along the major and subsidiary structures, as well as an aeromagnetic survey, trenching and underground channel sampling. • A program of 8 RC holes for 976m was completed in 2021 and 7 Diamond holes for 1,440.1m were completed in 2022 testing the Sunnyside Prospect under the ownership of Okapi Resources Ltd.
<p>Geology</p>	<ul style="list-style-type: none"> • <i>Deposit type, geological setting, and style of mineralisation.</i> 	<ul style="list-style-type: none"> • The Enmore Gold Project is structurally controlled orogenic Au, hosted in the New England Orogen on three major crustal NE trending structures, 20km SSW from Hillgrove Au-Sb Mine. The hydrothermal system was long-lived through tectonic compression & uplift. Two mineralisation styles are broadly described: • An early relatively low grade ductile silicified and sulfidic lode style mineralisation constrained within and generally parallel to mylonite zones formed on the major NE trending structures. • A later and higher-grade mineralisation associated with brittle deformation in dilational and rheologically controlled shoots often oblique to but constrained within the mylonite zones. • Native/free gold occurs as inclusions within mosaic/mosaic-drusy quartz and is concentrated filling cavities within mosaic/mosaic-drusy quartz as overgrowths to pyrite and arseniferous pyrite. Free gold occurs as inclusions within pyrite/arseniferous pyrite lining cavities filled with gold. • Gold occurrences associated with late dilational events generally have a higher proportion of free gold and

For personal use only

Criteria	JORC Code explanation	Commentary
		<p>significantly higher gold grades than the lode style structures.</p> <ul style="list-style-type: none"> • Enmore mineral occurrences are strongly analogous to Hillgrove.
Drill hole information	<ul style="list-style-type: none"> • <i>A summary of all information material to the understanding of the exploration results including a tabulation of the following information for all Material drill holes:</i> <ul style="list-style-type: none"> - Easting and northing of the drill hole collar. - Elevation or RL (Reduced Level – elevation above sea level in metres) of the drill hole collar. - Dip and azimuth of the hole. - Down hole length and interception depth. - Hole length. 	<ul style="list-style-type: none"> • Relevant completed drill hole details are presented in Tables
	<ul style="list-style-type: none"> • <i>If the exclusion of this information is justified on the basis that the information is not Material and this exclusion does not detract from the understanding of the report, the Competent Person should clearly explain why this is the case.</i> 	<ul style="list-style-type: none"> • No information has been excluded from this release to the best of Koonenberry Gold's knowledge.
Data aggregation methods	<ul style="list-style-type: none"> • <i>In reporting Exploration Results, weighting averaging techniques, maximum and/or minimum grade truncations (e.g., cutting of high grades) and cut-off grades are usually Material and should be stated.</i> 	<ul style="list-style-type: none"> • No new drill hole intersections have been reported. • Significant soil and rock chip results are summarized in the Tables in the body of the report.
	<ul style="list-style-type: none"> • <i>Where aggregate intercepts incorporate short lengths of high-grade results and longer lengths of low grade results, the procedure used for such aggregation should be stated and some typical examples of such aggregations should be shown in detail.</i> 	<ul style="list-style-type: none"> • No new drill hole intersections have been reported
	<ul style="list-style-type: none"> • <i>The assumptions used for any reporting of metal equivalent values should be clearly stated.</i> 	<ul style="list-style-type: none"> • No metal equivalent values have been reported.
Relationship between mineralisation widths and intercept lengths	<ul style="list-style-type: none"> • <i>These relationships are particularly important in the reporting of Exploration Results.</i> 	<ul style="list-style-type: none"> • No new drill hole intersections have been reported
	<ul style="list-style-type: none"> • <i>If the geometry of the mineralisation with respect to the drill hole angle is known, its nature should be reported.</i> 	<ul style="list-style-type: none"> • No new drill hole intersections have been reported
	<ul style="list-style-type: none"> • <i>If it is not known and only the down hole lengths are reported, there should be a clear statement to this effect (e.g., 'down hole length, true width not known').</i> 	<ul style="list-style-type: none"> • No new drill hole intersections have been reported
Diagrams	<ul style="list-style-type: none"> • <i>Appropriate maps and sections (with scales) and tabulations of intercepts should be included for any significant discovery being reported These should include, but not be limited to a plan view of drill hole collar locations and appropriate sectional views.</i> 	<ul style="list-style-type: none"> • Appropriate maps, sections, and tables for new results have been included.
Balanced reporting	<ul style="list-style-type: none"> • <i>Where comprehensive reporting of all Exploration Results is not practicable, representative reporting of both low and high grades and/or widths should</i> 	<ul style="list-style-type: none"> • Not all sample assay data has been included in this report, but the number of samples and basic statistics have been reported to

Criteria	JORC Code explanation	Commentary
	<i>be practiced to avoid misleading reporting of Exploration Results.</i>	provide context.
Other substantive exploration data	<ul style="list-style-type: none"> <i>Other exploration data, if meaningful and material, should be reported including (but not limited to): geological observations; geophysical survey results; geochemical survey results; bulk samples – size and method of treatment; metallurgical test results; bulk density, groundwater, geotechnical and rock characteristics; potential deleterious or contaminating substances.</i> 	<ul style="list-style-type: none"> This Project includes exploration data collected by previous companies. Much of this data has been captured and validated in a GIS database.
Further work	<ul style="list-style-type: none"> <i>The nature and scale of planned further work (e.g., tests for lateral extensions or depth extensions or large-scale step-out drilling).</i> 	<ul style="list-style-type: none"> Further exploration will be planned based on data interpretation and geological assessment of prospectivity. This may include surface sampling, geophysical surveys or drilling.
	<ul style="list-style-type: none"> <i>Diagrams clearly highlighting the areas of possible extensions, including the main geological interpretations and future drilling areas, provided this information is not commercially sensitive.</i> 	<ul style="list-style-type: none"> See body of this announcement.

For personal use only

