

EXPLORATION UPDATE

ASX ANNOUNCEMENT

25 JULY 2025

HIGHLIGHTS

- Infill RC drilling completed for Mineral Resource Upgrade
- Geotechnical drilling and logging completed for mine design

Audalia Resources Limited (ASX: **ACP**) is pleased to present an Exploration Update on recent activities.

MEDCALF PROJECT

The Medcalf Project is a vanadium-titanium-iron project located some 470 kilometres south east of Perth near Lake Johnston, Western Australia. The Medcalf Project comprises of one granted exploration licence E63/1855, two miscellaneous licences L63/75 and L63/94 and two General Purpose licences G63/10 and G63/12 as well as mining lease M63/656. Together these licences cover a total area of 38 km².

The Medcalf Project lies in the southern end of the Archaean Lake Johnston greenstone belt. This greenstone belt is a narrow, north-northwest trending belt approximately 110 km in length. It is located near the south margin of the Yilgarn Craton, midway between the southern ends of the Norseman-Wiluna and the Forrestania-Southern Cross greenstone belts.

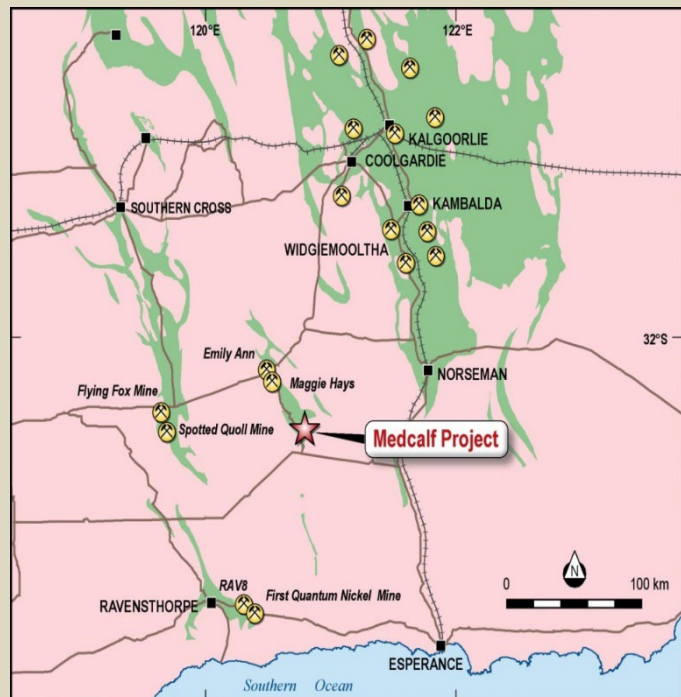


Figure 1: Medcalf Project - Location Map

For personal use only

Project Update

Activities currently underway are completing:

1. a new Mineral Resource Estimate;
2. a Geotechnical report to PFS level for mine designs;
3. a metallurgical testwork size fractionation program; and
4. a maiden Ore Reserve

Activities completed in this update during the June quarter are:

1. RC drilling program of 49 holes (including 6 hole re-entries at Egmont) for 1,643m; and
2. PQ core program of 10 holes for 525.7m including geotechnical logging.

Activities in progress are:

1. a Mineral Resource Upgrade;
2. determination of pit slope angles from the geotechnical logging for mine design; and
3. metallurgical testwork for size fractionation determination.

Infill RC drilling for Mineral Resource Upgrade

An infill RC drill programme designed by Cube Consulting to upgrade the Inferred Resource was completed by Redrock Drilling at Medcall's Vesuvius, Fuji and Pinatubo Prospects. A total of 41 holes were drilled for 1,267m (Figure 2 and Appendix 1).

Samples were taken from every metre and duplicates, blanks and standards were inserted at every 20 metre interval and were sent to Intertek for analysis. A total of 1,404 samples including a total of 150 QAQC samples of 50 duplicates, 50 blanks and 50 standards were analysed via the Intertek vanadium package.

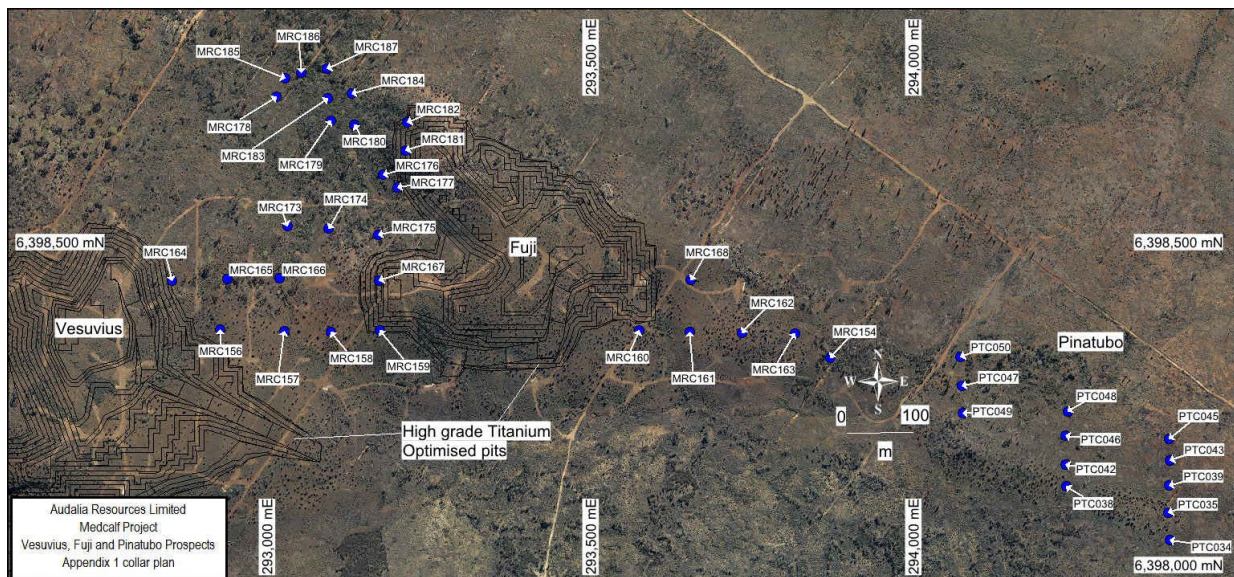


Figure 2: Vesuvius, Fuji and Pinatubo drill hole location plan

In the last Exploration update (ASX announcement dated 4 April 2025), it was reported that Cube Consulting were currently working on an updated Mineral Resource Estimate for the Egmont prospect. During their modelling, Cube required further clarity for determining the mineralised boundary in some areas and recommended extending the depths of 7 drill holes drilled in the December 2024 quarter and drilling a separate hole from surface.

A total of 8 RC holes (6 extended and 2 new) for 376m (Figure 3 and Appendices 2 & 3). One extended hole (MRC193) could not be reached due to wet weather. A new hole (MRC209) was drilled 11m north and 10m east.

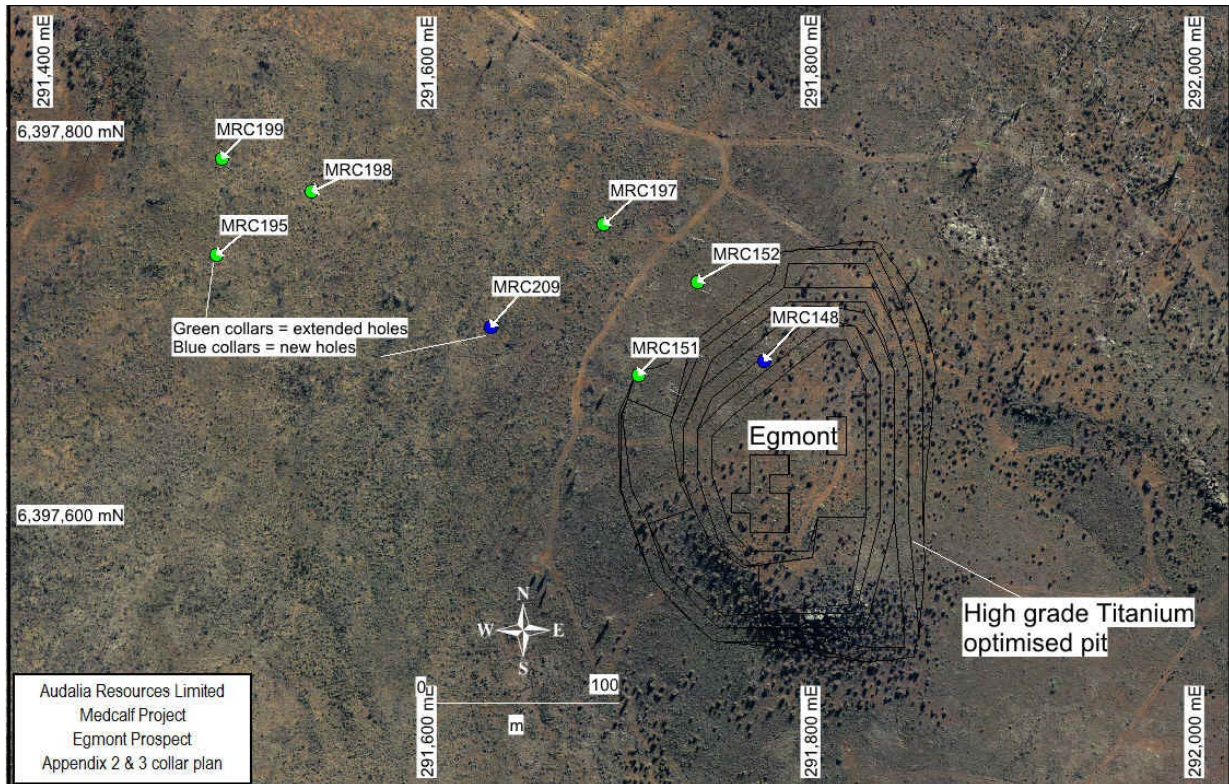


Figure 3: Egmont drill location plan

Samples were taken from every metre and duplicates, blanks and standards were inserted at every 20 metre interval and were sent to Intertek for analysis. A total of 399 samples including a total of 48 QAQC samples of 16 duplicates, 16 blanks and 16 standards were analysed via the Intertek vanadium package.

The assays have now been received along with the collar surveys. All data including lithology has been handed to Cube Consulting to merge and complete an updated Mineral Resource estimate that will be completed next quarter.

Geotechnical drilling for pit wall slope determination

A geotechnical drill program designed by WML consultants was drilled by DDH1 Drilling after the completion of the RC infill drill program. A total of 9 PQ core holes for 500.7m was drilled for the geotechnical program additional hole and one drilled to 25m for metallurgical testwork (Figures 4 & 5 and Appendix 4).

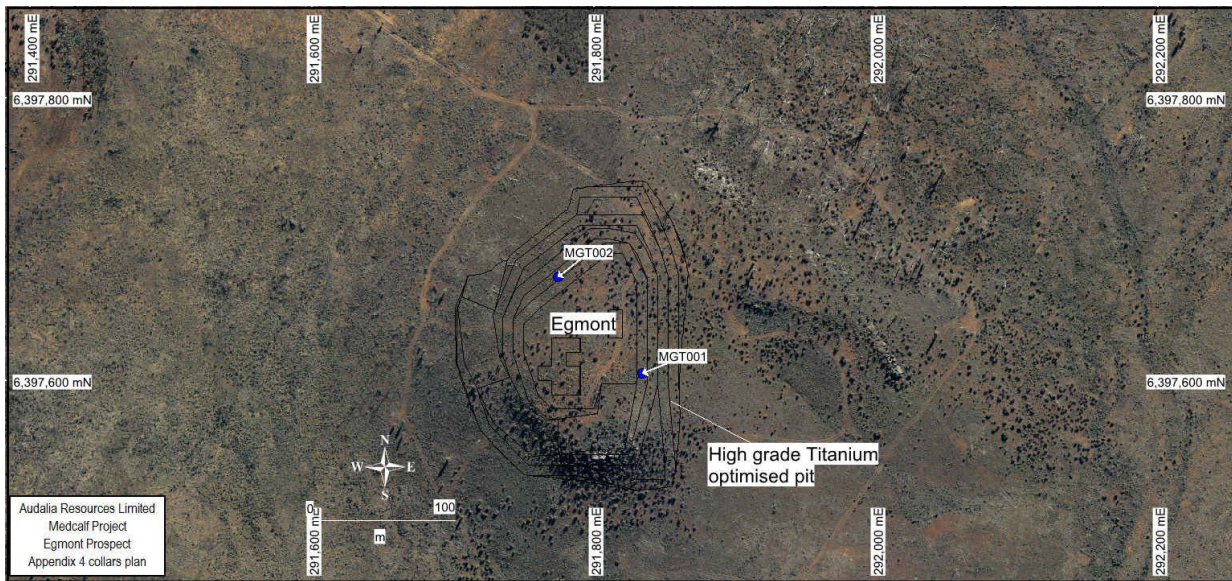


Figure 4: Egmont Geotechnical holes location plan

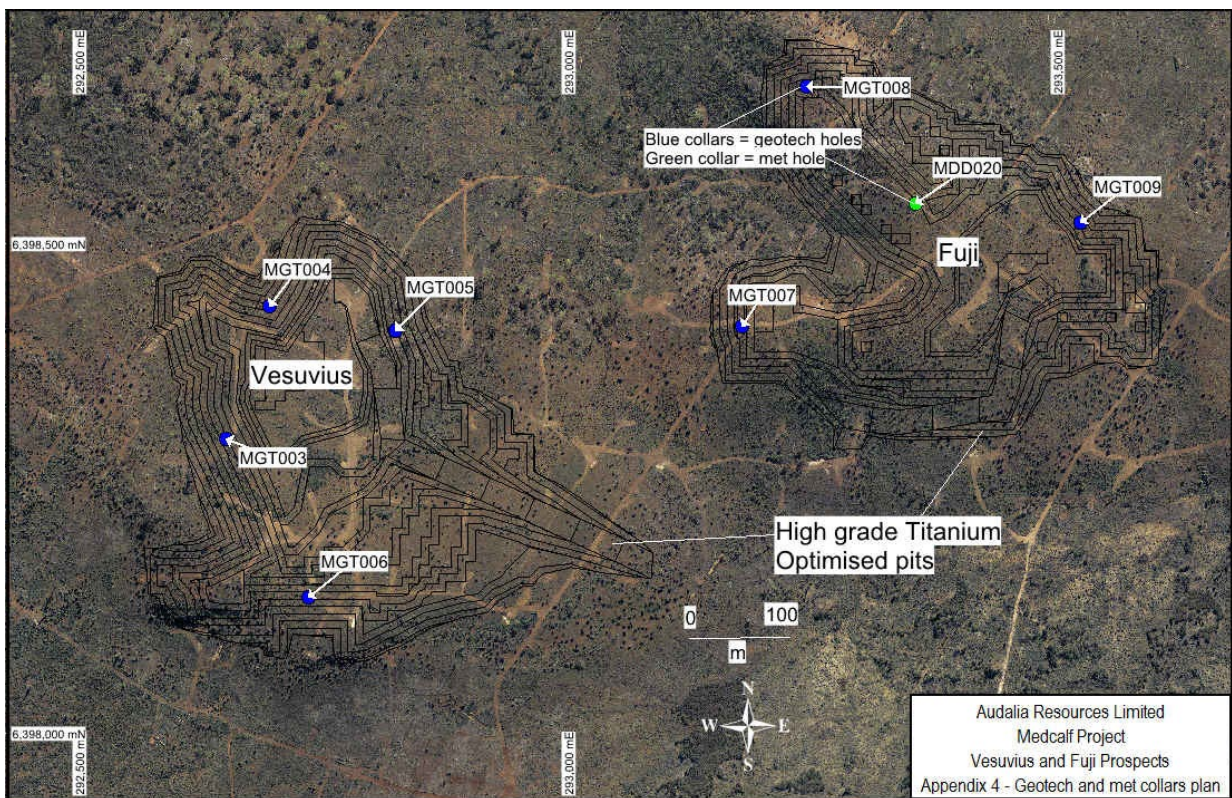


Figure 5: Vesuvius and Fuji Geotechnical holes and metallurgical hole location plan

The core was photographed and geotechnical logged on site and then transported back to a storage facility in Perth.

WML are currently assessing the data and finalising their report on the recommended pit slopes for the mine design that will form part of the mining approval.

For personal use only

Metallurgical program

Concurrently, a metallurgical testwork program designed by KeypointE Pty Ltd is underway at ALS laboratories to prepare the PQ core into defined intervals based on geology and metallurgy for size fraction testwork to be completed at AML.

Ore Reserve Pending

Once the inputs from the geotechnical and metallurgical reports are available and the new Mineral Resource estimate has been completed, Cube Consulting will then proceed to complete a maiden Ore Reserve for the Company.

Authorised by:

Brent Butler
CEO and Executive Director
Competent Person's Statement

The information in this report that relates to the Exploration Results is based on information compiled by Mr Brent Butler, who is a Fellow of The Australasian Institute of Mining and Metallurgy. Mr Butler over 40 years' experience as a geologist and is CEO and Executive Director of Audalia. Mr Butler has sufficient experience which is relevant to the style of mineralisation and type of deposit under consideration and to the activity which he is undertaking to qualify as a Competent Person as defined in the 2012 edition of the 'Australasian Code for Reporting of Exploration Results, Mineral Resources and Ore Reserves' (JORC Code). Mr Butler has provided his consent to the inclusion in the report of the matters based on his information in the form and context in which it appears.

For personal use only

Appendix 1											
Vesuvius, Fuji and Pinatubo drill hole dGPS surveyed collars											
Hole	MGA94 East	MGA94 North	AHD RL	Depth (m)	Azimuth	Dip	Drill Co.	Rig Type	Geologist	Date Start	Date End
MRC154	293874.702	6398318.862	382.537	25	0	-90	Redrock	Hydco 40	TWT	1/05/2025	1/05/2025
MRC156	292929.613	6398363.216	411.579	25	0	-90	Redrock	Hydco 40	TWT	30/04/2025	30/04/2025
MRC157	293029.952	6398360.209	407.24	25	0	-90	Redrock	Hydco 40	TWT	1/05/2025	1/05/2025
MRC158	293101.375	6398358.285	409.838	25	0	-90	Redrock	Hydco 40	TWT	30/04/2025	30/04/2025
MRC159	293177.942	6398360.888	411.787	25	0	-90	Redrock	Hydco 40	TWT	30/04/2025	30/04/2025
MRC160	293578.254	6398360.88	395.583	25	0	-90	Redrock	Hydco 40	TWT	29/04/2025	29/04/2025
MRC161	293657.106	6398358.672	392.573	25	0	-90	Redrock	Hydco 40	TWT	29/04/2025	29/04/2025
MRC162	293738.208	6398357.966	390.578	25	0	-90	Redrock	Hydco 40	TWT	29/04/2025	29/04/2025
MRC163	293820.394	6398356.428	383.154	25	0	-90	Redrock	Hydco 40	TWT	29/04/2025	29/04/2025
MRC164	292855.745	6398438.85	406.301	25	0	-90	Redrock	Hydco 40	TWT	1/05/2025	1/05/2025
MRC165	292941.188	6398441.431	403.297	25	0	-90	Redrock	Hydco 40	TWT	1/05/2025	1/05/2025
MRC166	293022.793	6398442.328	401.371	50	0	-90	Redrock	Hydco 40	TWT	1/05/2025	1/05/2025
MRC167	293176.223	6398438.52	417.146	40	0	-90	Redrock	Hydco 40	TWT	30/04/2025	30/04/2025
MRC168	293657.94	6398439.898	400.585	25	0	-90	Redrock	Hydco 40	TWT	28/04/2025	28/04/2025
MRC173	293034.559	6398522.81	395.841	20	0	-90	Redrock	Hydco 40	TWT	1/05/2025	1/05/2025
MRC174	293097.7	6398519.22	399.935	30	0	-90	Redrock	Hydco 40	TWT	1/05/2025	1/05/2025
MRC175	293174.588	6398508.893	404.849	20	0	-90	Redrock	Hydco 40	TWT	1/05/2025	1/05/2025
MRC176	293182.921	6398602.006	400.933	30	0	-90	Redrock	Hydco 40	TWT	29/04/2025	29/04/2025
MRC177	293204.252	6398582.036	402.381	40	0	-90	Redrock	Hydco 40	TWT	29/04/2025	29/04/2025
MRC178	293017.174	6398722.333	388.159	30	0	-90	Redrock	Hydco 40	TWT	29/04/2025	29/04/2025
MRC179	293101.337	6398685.116	394.823	30	0	-90	Redrock	Hydco 40	TWT	30/04/2025	30/04/2025
MRC180	293138.146	6398679.074	398.849	30	0	-90	Redrock	Hydco 40	TWT	30/04/2025	30/04/2025
MRC181	293216.673	6398639.525	410.537	40	0	-90	Redrock	Hydco 40	TWT	29/04/2025	29/04/2025
MRC182	293219.553	6398682.939	409.464	30	0	-90	Redrock	Hydco 40	TWT	29/04/2025	29/04/2025
MRC183	293096.967	6398720.223	393.956	30	0	-90	Redrock	Hydco 40	TWT	30/04/2025	30/04/2025
MRC184	293134.255	6398727.382	397.241	30	0	-90	Redrock	Hydco 40	TWT	30/04/2025	30/04/2025
MRC185	293031.171	6398751.429	388.133	30	0	-90	Redrock	Hydco 40	TWT	29/04/2025	29/04/2025
MRC186	293055.539	6398760.212	389.416	30	0	-90	Redrock	Hydco 40	TWT	29/04/2025	29/04/2025
MRC187	293095.038	6398765.81	391.636	30	0	-90	Redrock	Hydco 40	TWT	30/04/2025	30/04/2025
PTC034	294400.07	6398037.693	371.214	25	0	-90	Redrock	Hydco 40	TWT	2/05/2025	2/05/2025
PTC035	294397.976	6398079.007	371.676	60	0	-90	Redrock	Hydco 40	TWT	2/05/2025	2/05/2025
PTC038	294239.197	6398120.207	377.346	30	0	-90	Redrock	Hydco 40	TWT	2/05/2025	2/05/2025
PTC039	294398.258	6398122.198	370.603	50	0	-90	Redrock	Hydco 40	TWT	2/05/2025	2/05/2025
PTC042	294238.508	6398153.941	376.994	25	0	-90	Redrock	Hydco 40	TWT	2/05/2025	2/05/2025
PTC043	294399.668	6398159.515	370.525	50	0	-90	Redrock	Hydco 40	TWT	2/05/2025	2/05/2025
PTC045	294398.901	6398193.857	370.161	40	0	-90	Redrock	Hydco 40	TWT	2/05/2025	2/05/2025
PTC046	294239.016	6398198.773	373.33	25	0	-90	Redrock	Hydco 40	TWT	2/05/2025	2/05/2025
PTC047	294078.572	6398275.295	373.132	42	0	-90	Redrock	Hydco 40	TWT	1/05/2025	1/05/2025
PTC048	294242.574	6398235.569	370.881	25	0	-90	Redrock	Hydco 40	TWT	2/05/2025	2/05/2025
PTC049	294078.877	6398232.952	377.16	30	0	-90	Redrock	Hydco 40	TWT	1/05/2025	1/05/2025
PTC050	294075.686	6398320.039	370.541	25	0	-90	Redrock	Hydco 40	TWT	2/05/2025	2/05/2025
Total	41	holes	for	1,267	metres						

Appendix 2											
Egmont new holes surveyed by dGPS collars April 2025											
Hole	MGA94 East	MGA94 North	AHD RL	Depth (m)	Azimuth	Dip	Drill Co.	Rig Type	Geologist	Date Start	Date End
MRC148	291,777.26	6,397,679.31	412.94	60	0	-90	Redrock	Hydco 40	TWT	27/04/2025	27/04/2025
MRC209	291,634.80	6,397,696.75	401.88	80	0	-90	Redrock	Hydco 40	TWT	3/05/2025	3/05/2025
Total	2	holes	for	140	metres						

Appendix 3													
Egmont extended holes surveyed by dGPS collars April 2025													
Hole	MGA94 East	MGA94 North	AHD RL	Intital Depth (m)	Final Depth (m)	Extended metres (m)	Azimuth	Dip	Drill Co.	Rig Type	Geologist	Date Start	Date End
MRC151	291711.93	6397671.94	405.89	42.00	60.00	18.00	0.00	-90.00	Redrock	Hydco 40	TWT	1/12/2024	1/12/2024
MRC152	291742.28	6397720.32	406.23	66.00	78.00	12.00	0.00	-90.00	Redrock	Hydco 40	TWT	1/12/2024	1/12/2024
MRC195	291491.98	6397734.31	406.65	40.00	67.00	27.00	0.00	-90.00	Redrock	Hydco 40	TWT	29/11/2024	29/11/2024
MRC197	291693.29	6397750.19	403.15	40.00	90.00	50.00	0.00	-90.00	Redrock	Hydco 40	TWT	30/11/2024	30/11/2024
MRC198	291541.45	6397767.36	406.84	20.00	96.00	76.00	0.00	-90.00	Redrock	Hydco 40	TWT	29/11/2024	29/11/2024
MRC199	291494.57	6397784.71	408.29	55.00	108.00	53.00	0.00	-90.00	Redrock	Hydco 40	TWT	29/11/2024	29/11/2024
Total			6	holes	for	236	metres						

Appendix 4								
Geotechnical dGPS surved collars June 2025								
Hole	Prospect	East	North	RL	Depth	Azimuth	Dip	
MGT001	Egmont	291,834.26	6,397,605.33	416.00	40.4	90	-70	
MGT002	Egmont	291,774.32	6,397,673.26	413.10	29.2	0	-70	
MGT003	Vesuvius	292,649.92	6,398,300.94	425.47	72.7	270	-70	
MGT004	Vesuvius	292,694.78	6,398,436.60	419.48	83.1	0	-70	
MGT005	Vesuvius	292,823.75	6,398,411.07	412.11	62.1	90	-70	
MGT006	Vesuvius	292,734.67	6,398,139.09	434.87	84.5	180	-70	
MGT007	Fuji	293,177.33	6,398,415.41	417.65	44.2	270	-70	
MGT008	Fuji	293,244.11	6,398,661.21	412.18	43.4	0	-70	
MGT009	Fuji	293,523.87	6,398,521.66	408.76	41.1	90	-70	
Total		9	holes	for	500.7	metres		
Metallurgical dGPS surved collar June 2025								
Hole	Prospect	East	North	RL	Depth	Azimuth	Dip	
MDD020	Fuji	293,355.45	6,398,541.00	419.69	25	0	-90	
Total		1	holes	for	25	metres		

For personal use only