

ASSAYS CONFIRM THICK, HIGH-GRADE COPPER: 42.7 METRES @ 2.69% Cu FROM NEAR SURFACE

- High-grade, near-surface copper mineralisation confirmed at both Jura and Laphroaig
- **At Jura, JURC001** targeted a chalcocite-rich zone within the broader 7.0km mineralised N-S striking Jura fault zone (as supported by surface samples). **Significant intercepts include:**
 - **42.7 metres @ 2.69% Cu** from 15.2 metres, including:
 - **16.8 metres @ 3.96% Cu** from 41.2 metres; and
 - **6.1 metres @ 5.51% Cu** from 15.2 metres.
- **At Laphroaig, LARC002** targeted the downdip extension of a ~100m-long chalcocite vein network which dips under cover to the north, south and west. **Significant intercepts include:**
 - **29.0 metres @ 0.67% Cu** from 7.6 metres, including:
 - **12.2 metres @ 1.23% Cu** from 7.6 metres.
- **Laphroaig & Jura are over ~75km apart**, continuously connected by Somerset's dominant 1,665km² landholding, hosting **112 historically mapped copper occurrences¹**, highlighting the potential for multiple copper discoveries across the broader licence area.
- **Assays** from surface sampling at Lars, Larry, Nor, Jura & Coronation **expected in ~1 week**
- **Assays** from remaining drilling at Jura, Laphroaig and Coronation **expected in 2-3 weeks**
- Planning underway for **larger Phase-2 exploration program**, including drilling, geophysics & soils

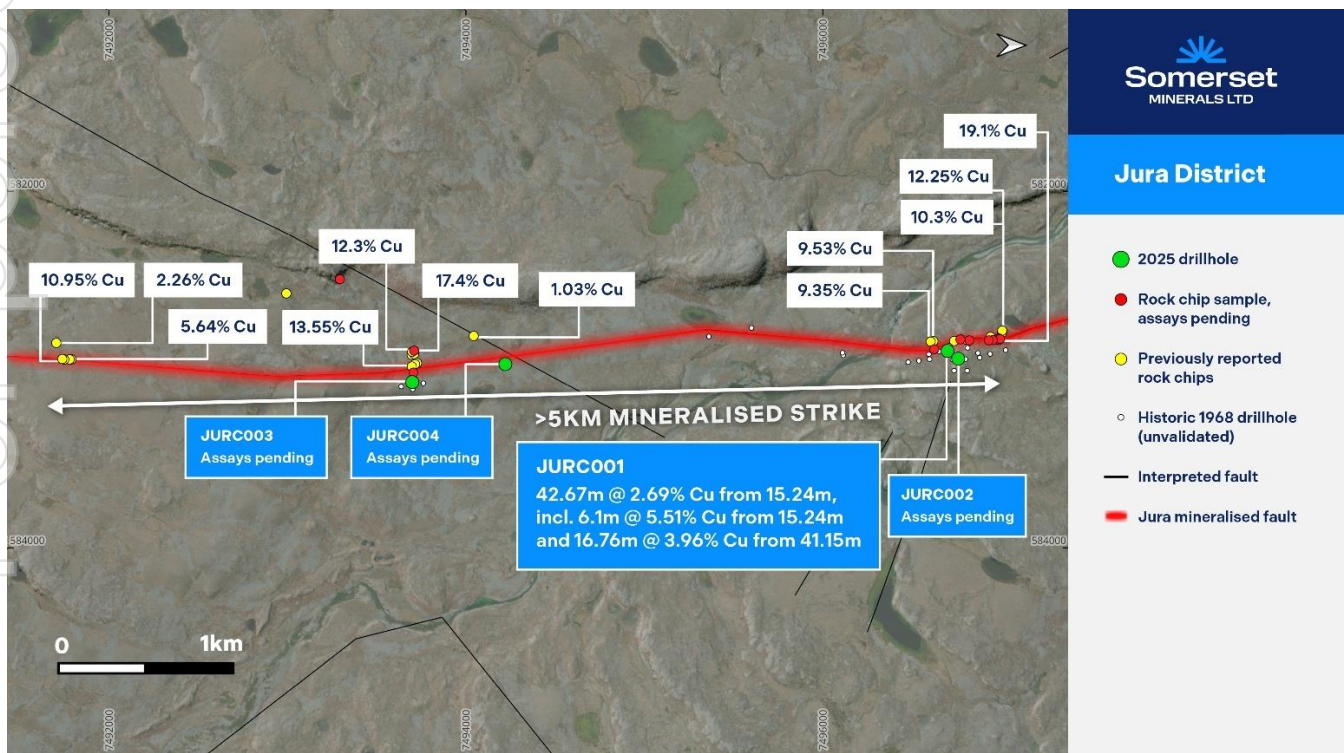


Figure 1: Plan map of Jura District highlighting >5km of mineralised strike, 2025 drillhole locations, and JURC001 intersecting 42.67m @ 2.69% Cu

¹ Refer to ASX:SMM 10/12/2025; ASX:SMM 12/05/2025

Somerset Minerals Limited (“**Somerset**” or the “**Company**”) (**ASX:SMM**) is pleased to announce the first assays received for two (2) of nine (9) recently completed reverse circulation (“RC”) drillholes from its flagship Coppermine Project in Canada.

These maiden drill results serve to confirm high-grade, near-surface copper mineralisation at both Jura and Laphroaig—two targets located over ~75km apart on contiguous licenses across Somerset’s dominant 1,665 km² landholding. With over 110 historically mapped copper occurrences, these results underscore the district-scale potential for multiple copper discoveries across the broader project area.

Remaining assay results from the recent surface sampling program at Lars, Larry, Nor, Jura, and Coronation are expected within approximately one week, while assays from the remaining reverse circulation drill holes at Jura, Laphroaig and Coronation are anticipated in 2–3 weeks.

Managing Director, Chris Hansen, commented,

“Since completing the acquisition of the Coppermine Project just three months ago, we’ve confirmed high-grade mineralisation at surface, completed a targeted maiden drill campaign, and now—just two weeks after drilling wrapped up—we’re already reporting standout assay results, including 42.7 metres at 2.69% copper from near surface at Jura. This kind of speed reflects our commitment to action, and our ability to unlock value rapidly.

The more time we spend on the ground, the more confident we are that the project displays several key characteristics typical of a large copper system. We’re seeing high-tenor source rocks, evidence of intense leaching and fluid movement, large-scale fault zones, well-developed alteration halos, and the presence of thick, high-grade mineralised zones—all the hallmarks of a major mineral system. Importantly, over 90% of the project area is covered by a thin veneer of overburden, which means the vast majority of the landholding remains largely untested and provides upside for further discoveries.

We’re seeking to execute a dual-track strategy over the coming months: advancing high-priority prospects like Jura towards resource definition, while simultaneously working to test the district-scale potential across our dominant 1,665 km² landholding. With additional assays pending from both drilling and surface sampling, and with plans underway for a project-wide geochemical program in addition to a major airborne magnetic survey to generate a pipeline of regional targets, we’re entering a transformational phase for Somerset Minerals.

Importantly, we’ve also negotiated an agreement with our drilling contractor to leave the RC rig and equipment on standby in Kugluktuk for the next four to six weeks. This gives us the flexibility to rapidly recommence drilling as results come in and targets are refined—ensuring we maintain our momentum”

TECHNICAL DISCUSSION

Assay results have now been received for two (2) of nine (9) recently completed reverse circulation drillholes serving to confirm high-grade, near-surface copper mineralisation at both Jura and Laphroaig. These two holes were part of the recently concluded exploration program comprised of nine (9) reverse circulation (RC) drill holes testing seven (7) separate targets, alongside eight days of intensive field mapping and sampling across five (5) key prospect areas. Drilling and field mapping were managed by the Company in collaboration with several leading independent geological consultants, whose expertise in structural geology, geochemistry and geophysics has materially advanced the Company’s understanding of the controls on mineralisation across the district. These insights will underpin the next phase drilling and geophysics.

SOMERSET MINERALS LTD

Level 2, 22 Mount Street, Perth WA 6000

Postal Address:

PO Box 7054, Cloisters Square, Perth WA 6850

P: +61 8 6188 8181

F: +61 8 6188 8182

E: info@somersetminerals.com.au

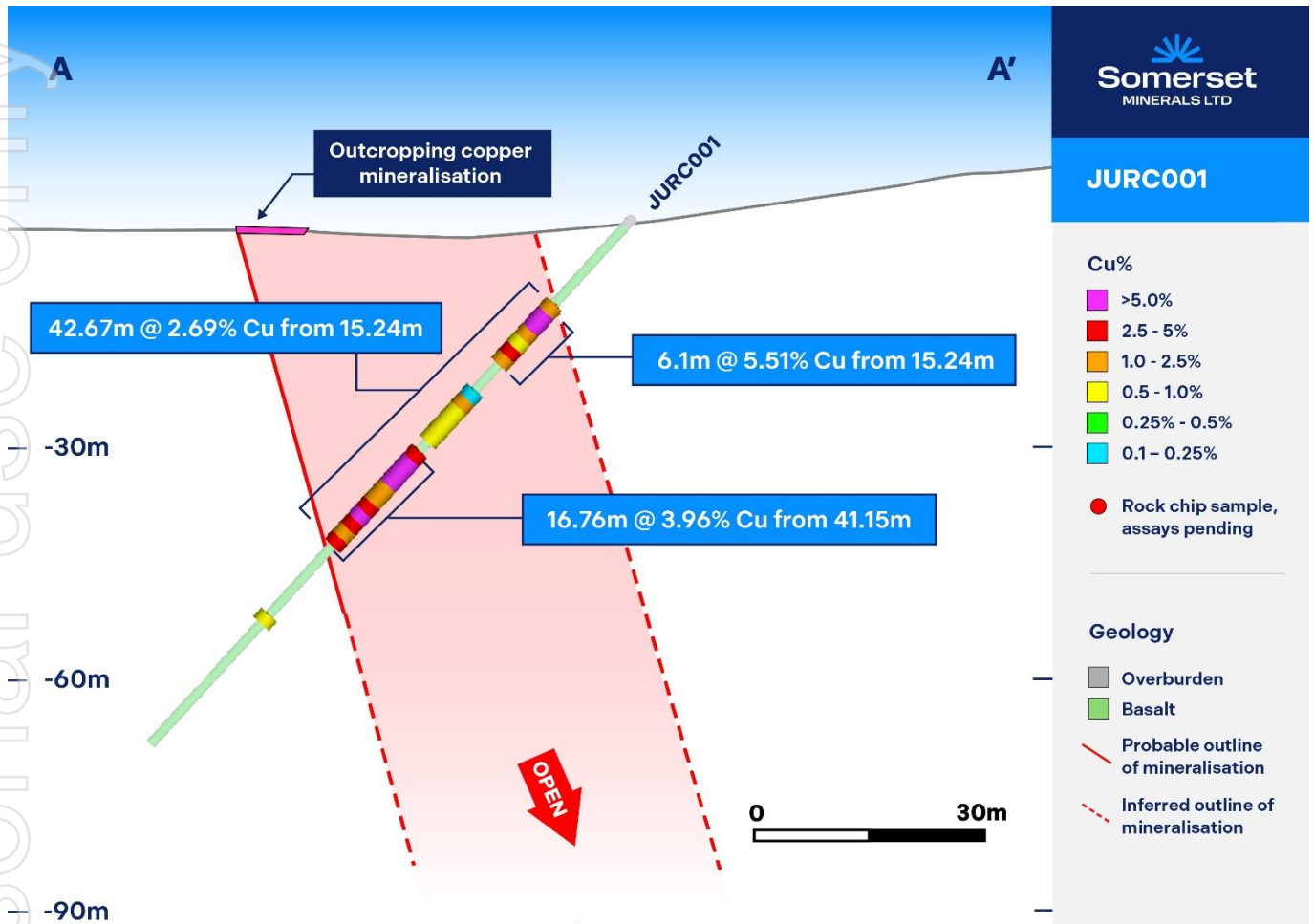


Figure 2: Cross-section of JURC001 showing 42.67m @ 2.69% Cu from near surface; mineralisation remains open at depth & linked to surface outcrop.

JURA DISTRICT

Mineralisation at Jura is hosted within a ~7.0km trend supported by high-grade surface sampling, geophysics and limited historical drilling, all of which serve to underscore Jura's exploration potential. The northern segment of this trend contains a historical resource, accompanied by notable high-grade surface rock chip samples, including assays of 19.10% copper and 21.1g/t silver². While the southern extension is supported by a historic induced polarisation survey (IP) and numerous high-grade surface samples (Figure 1), including 13.55% copper and 24.3g/t silver³.

At Jura, two reverse circulation holes were drilled to test the downdip extension of outcropping copper mineralisation and to validate historical results from unverified 1968 drilling. Drillhole **JURC001** targeted a well-defined north-south striking fault zone, **intersecting a wide zone of high-grade mineralisation, with significant intercepts including:**

- **42.7 metres @ 2.69% Cu** from 15.2 metres, including:
 - **16.8 metres @ 3.96% Cu** from 41.2 metres; and
 - **6.1 metres @ 5.51% Cu** from 15.2 metres.

Geological mapping, structural measurements, rock chip sampling, and historic data indicate that the mineralised zone dips steeply to the east (~65° dip, ~170° strike) and has a true thickness of ~40 metres. The copper

² Refer to ASX:SMM 16/06/2025

³ Refer to ASX:SMM 16/06/2025

SOMERSET MINERALS LTD

Level 2, 22 Mount Street, Perth WA 6000
Postal Address:
PO Box 7054, Cloisters Square, Perth WA 6850

P: +61 8 6188 8181
F: +61 8 6188 8182
E: info@somersetminerals.com.au

mineralisation is dominated by chalcocite, with zones of malachite and minor bornite, and ranges from semi-massive to finely disseminated textures. A distinct high-grade core is evident, surrounded by a broader halo of lower-grade mineralisation, reflecting major fluid pathways and associated alteration. Importantly, the mineralised zone is associated with a pronounced magnetic low and intense hematite alteration, features that may offer a valuable exploration targeting tool across the broader Coppermine district.

Mineralisation remains open downdip and along strike, with the controlling structure mapped and sampled for over 7km to the south—as confirmed by both drilling and rock chip results. Assays remain pending for hole JURC002, drilled 78 metres from JURC001, as well as for surface samples (607757-607761; 621514-621515) collected from the broader Jura target area.

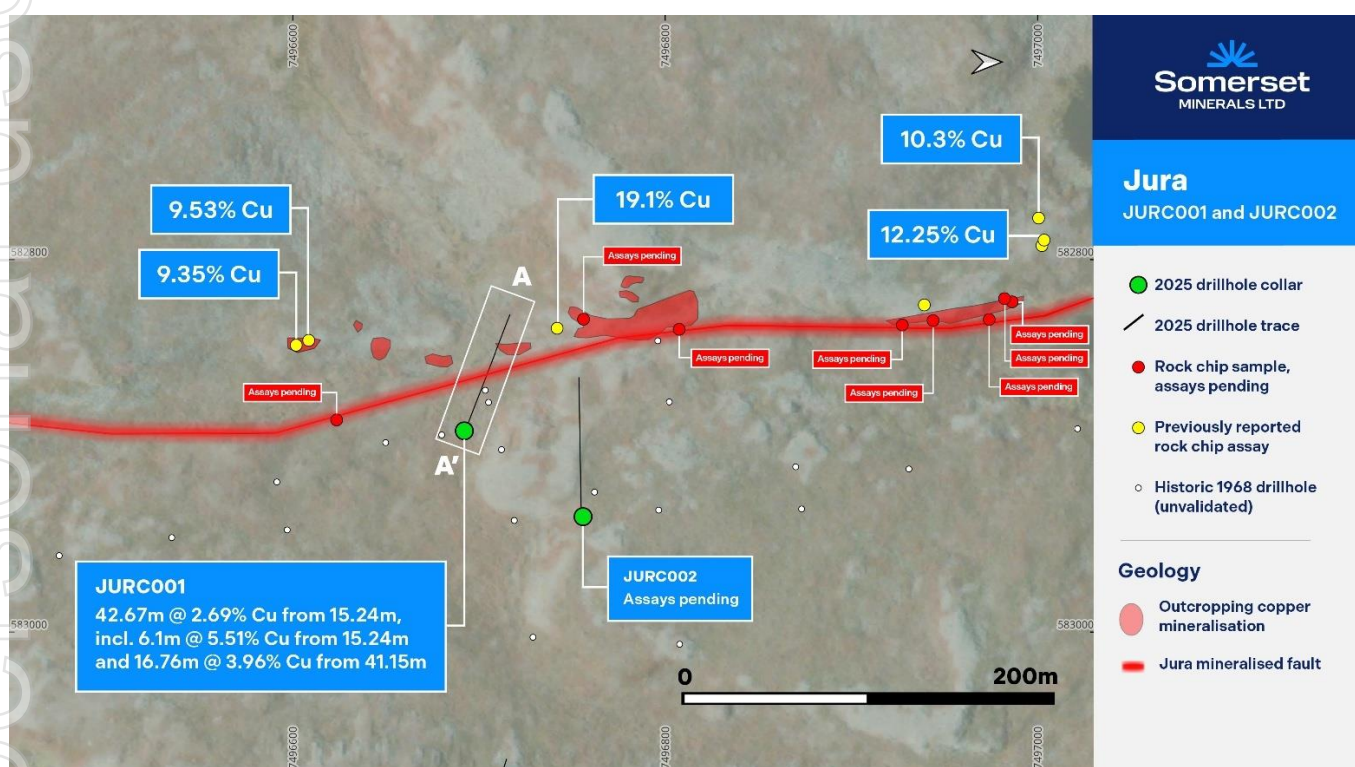


Figure 3: Plan view of JURC001 and surrounding high-grade surface rock chips (up to 19.1% Cu) along the highly prospective mineralised Jura fault.

LAPHROAIG DISTRICT

Known mineralisation at Laphroaig occurs extensively throughout the district, with two notable examples being the Lars and Larry prospects, which are two distinct exploration targets ~6.5km apart from each other.

At Larry, drillhole LARC002 was completed to test the downdip extension of outcropping chalcocite mineralisation hosted in basalt. The hole was planned based on detailed field mapping, which identified a dense network of mineralised chalcocite veins along a prominent, 100-metre-long ridge. This mineralised system appears to dip beneath cover to the north, south, and west, indicating strong potential for extensions at depth and along strike.

Significant intercepts from LARC002 include:

- **29.0 metres @ 0.67% Cu** from 7.6 metres, including:
 - **12.2 metres @ 1.23% Cu** from 7.6 metres.

The copper occurs almost exclusively as chalcocite within quartz-lacking veins that range in thickness from 1-60 cm—highlighting the structurally controlled and high-grade nature of the mineralisation. Structural analysis indicates the vein system dips steeply to the WSW at an average dip of 80 degrees, with a strike of approximately 160 degrees.

Importantly, the mineralisation is associated with a pronounced magnetic low and intense hematite alteration, which are believed to represent a distinctive geophysical signature that may assist in vectoring future discoveries across Somerset’s 1,665 km² landholding. Surface samples (607755–607756 and 621507–621508) were collected from this location and are currently pending assay.

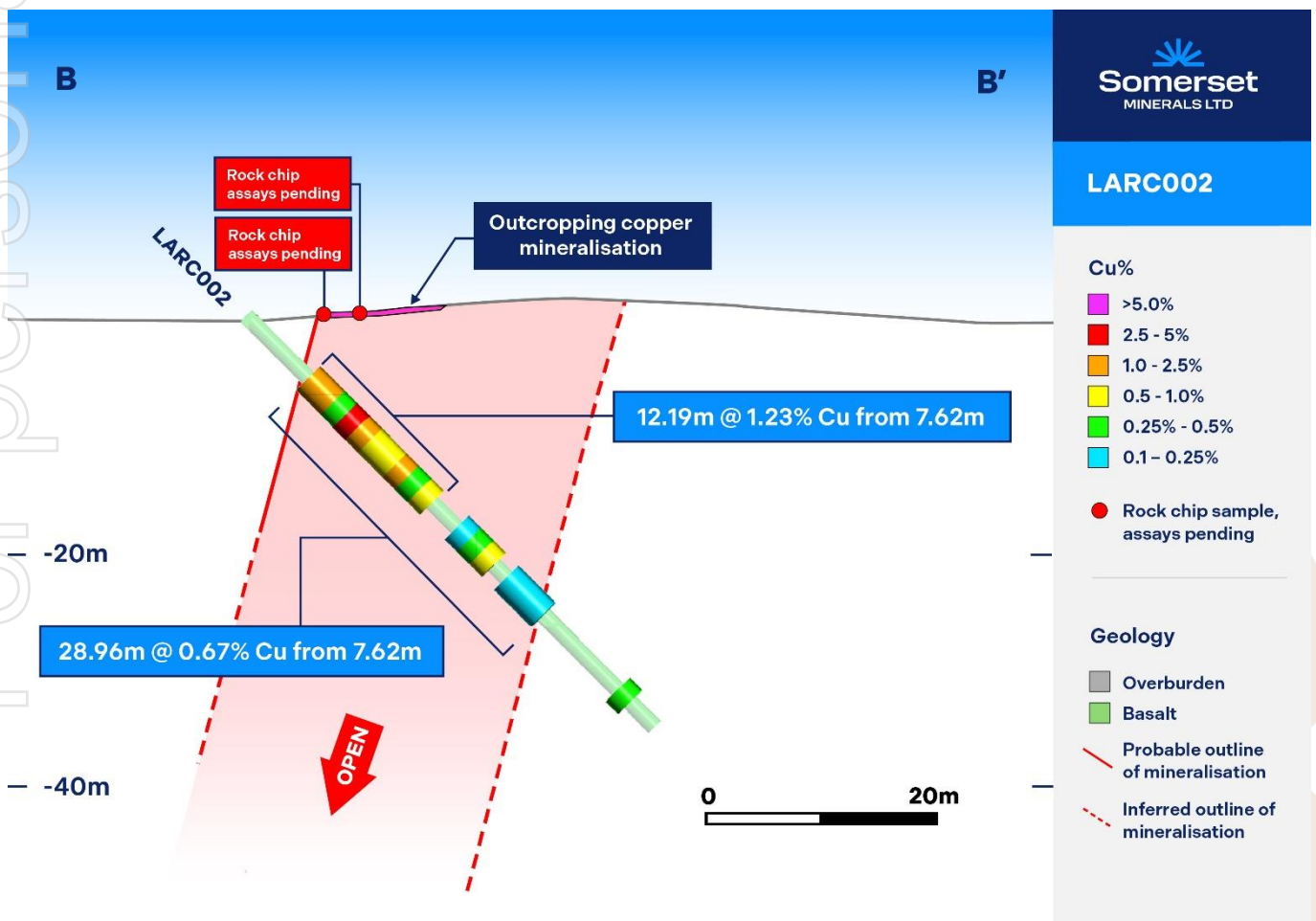


Figure 4: Cross-section of LARC002 showing 28.96m @ 0.67% Cu from 7.62m, including 12.19m @ 1.23% Cu; mineralisation remains open at depth.

SOMERSET MINERALS LTD

Level 2, 22 Mount Street, Perth WA 6000
 Postal Address:
 PO Box 7054, Cloisters Square, Perth WA 6850

P: +61 8 6188 8181
 F: +61 8 6188 8182
 E: info@somersetminerals.com.au

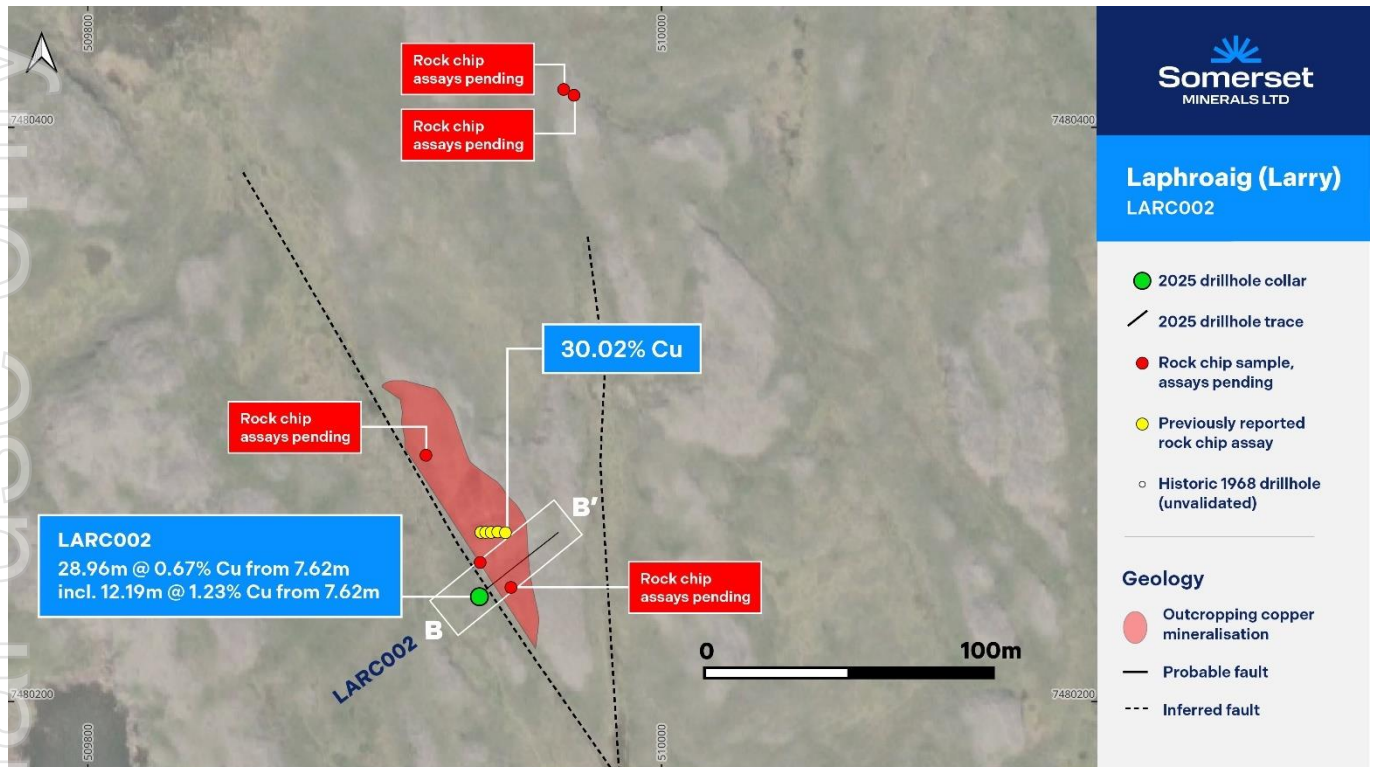


Figure 5: Plan view of LARC002 showing 28.96m @ 0.67% Cu from 7.62m, near surface copper outcrop and rock chips up to 30.02% Cu.

EXPLORATION UPDATE

Planning is well advanced for a significantly expanded Phase-2 exploration campaign at the Coppermine Project. This next phase will be guided by the ongoing integration of geochemical, petrophysical, petrographic, structural, and lithological data — all helping to build a clearer understanding of the mineral system and refine targeting across our large, highly prospective landholding.

Phase-2 is expected to involve a broader and more intensive drill program, targeting high-priority anomalies at Jura and Laphroaig, as well as newly identified targets emerging from planned surface sampling and geophysical surveys. A key objective of the program will be to advance resource definition at more mature prospects while also unlocking new discoveries across the broader district.

Importantly, Somerset has negotiated an agreement with its reverse circulation drill contractor to leave the drill rig and associated equipment in Kugluktuk for the next 4–6 weeks. This provides the Company with the flexibility to rapidly recommence drilling as assay results are received and target areas are refined—ensuring momentum is maintained between exploration phases.

It is anticipated that Jura will become a key focus of the upcoming Phase-2 campaign, as the prospect continues to demonstrate the scale and continuity of copper mineralisation, supported by both recent drilling and historical datasets. Jura is located just ~25 kilometres from both Kugluktuk and the coastline, offering a significant logistical advantage for ongoing exploration.

Recent drilling from across the project area has served to confirm that copper mineralisation is consistently associated with pronounced magnetic lows and intense haematitic alteration. This pattern is interpreted to reflect hydrothermal fluid migration associated with mineralisation, which has altered magnetite to hematite in the basalt host rocks—resulting in demagnetised zones. Somerset views this geophysical signature as a powerful tool for regional targeting and is currently assessing the use of high-resolution airborne magnetic surveys across the entire project area to identify similar demagnetised alteration zones that may host further discoveries.

SOMERSET MINERALS LTD

Level 2, 22 Mount Street, Perth WA 6000
Postal Address:
PO Box 7054, Cloisters Square, Perth WA 6850

P: +61 8 6188 8181
F: +61 8 6188 8182
E: info@somersetminerals.com.au

In parallel, the Company is advancing till and soil geochemical sampling, with results from a recently completed till orientation survey expected shortly. These programs will aim to generate coincident geochemical and geophysical anomalies.

Somerset remains focused on progressing its broader dual-track strategy: combining targeted drilling at advanced stage prospects, with a district-scale exploration program across the Company's dominant position within the Copper Creek Formation, focused on making a tier-1 discovery. Leveraging off the latest geophysical and geochemical data, Somerset believes it is well positioned to not only advance known targets—but to potentially deliver multiple copper discoveries across the region.

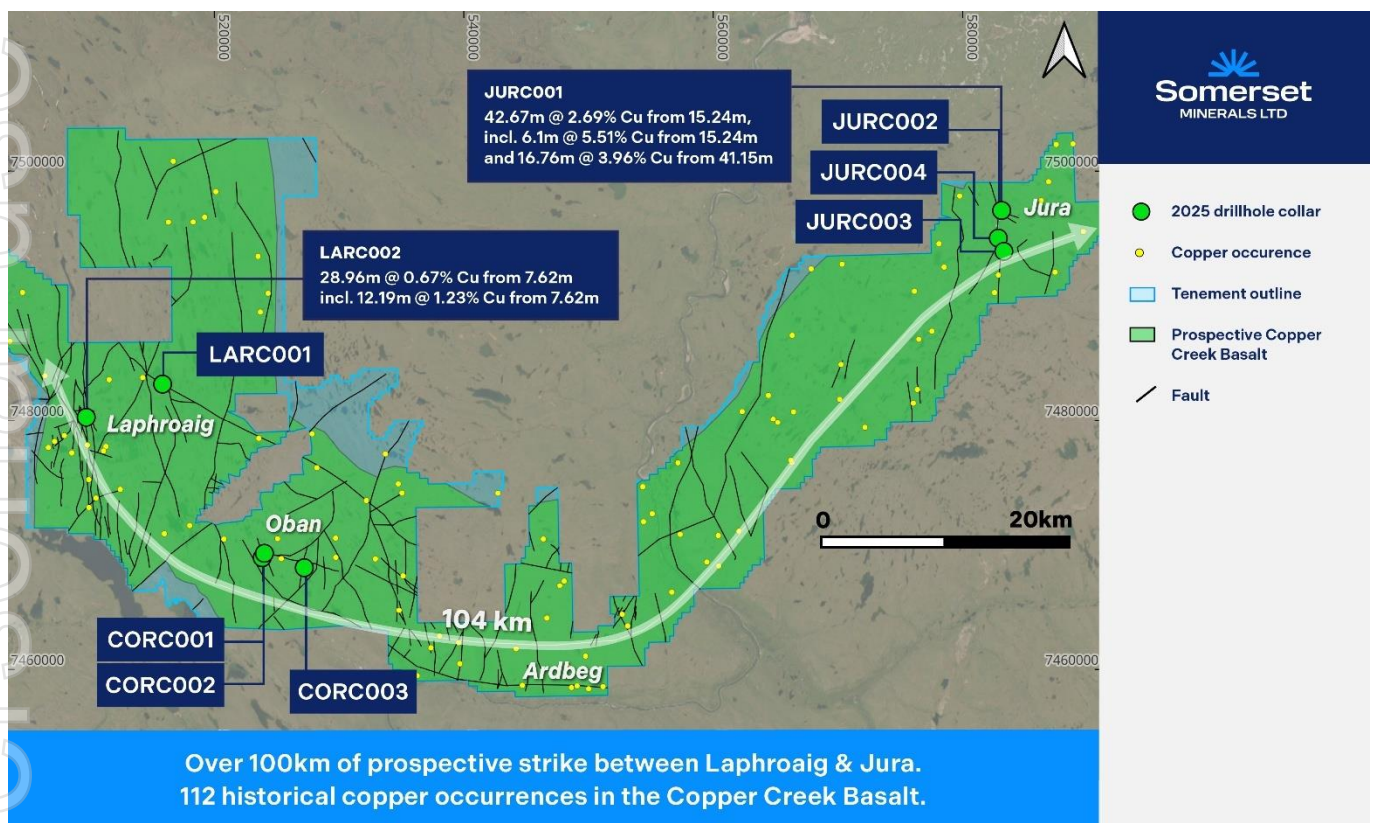


Figure 6: Over 100km of prospective strike with 112 copper occurrences between Laphroaig, Jura and wider project area within the Copper Creek Basalt.

ABOUT COPPERMINE

The Coppermine Project is located in the Kitikmeot region of Nunavut and consists of 102 exploration licences and one exclusive exploration right executed with Nunavut Tunngavik Incorporated (NTI), covering 1,665km², serving to position Somerset as the largest landholder in the Coppermine region. Importantly, over 90% of the Company's tenure comprises the Copper Creek Formation basalts, which hosts high-grade copper mineralisation.

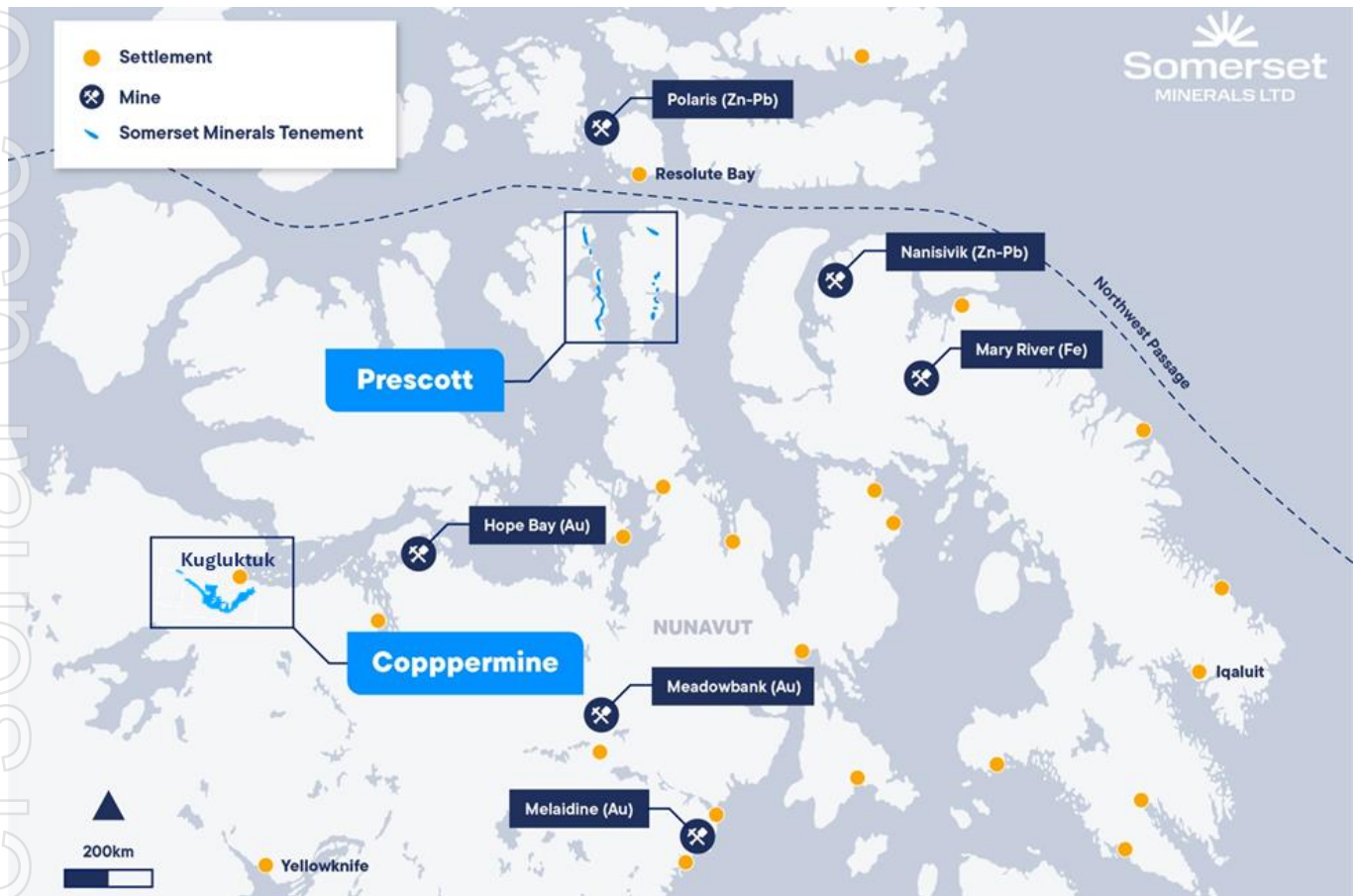


Figure 7. Overview Somerset project locations and mines in Nunavut.

The Project presents a regional-scale copper-silver exploration opportunity within the Copper Creek basalts, which hosts high-grade structurally controlled sulphide and native copper mineralisation in brecciated sub-vertical fault zones. Copper mineralisation in the Project area principally occurs in three styles: **fault-hosted (~2.0 – 45% Cu)**, **basalt flow top replacement (~2.0 – 15% Cu)**, and **sediment-hosted (~0.25 – 2.0% Cu)**.⁴ The region's geology and mineralisation is analogous to the Keweenaw Peninsula copper deposits in Michigan, which host high-grade native Cu in continental flood basalts and sediments, in basalt flow tops and fault zones.

⁴ See ASX:SMM Announcement dated 10/12/2024 – Acquisition of High-Grade Copper project Adjacent to White Cliff Minerals.

SOMERSET MINERALS LTD

Level 2, 22 Mount Street, Perth WA 6000
 Postal Address:
 PO Box 7054, Cloisters Square, Perth WA 6850

P: +61 8 6188 8181
 F: +61 8 6188 8182
 E: info@somersetminerals.com.au

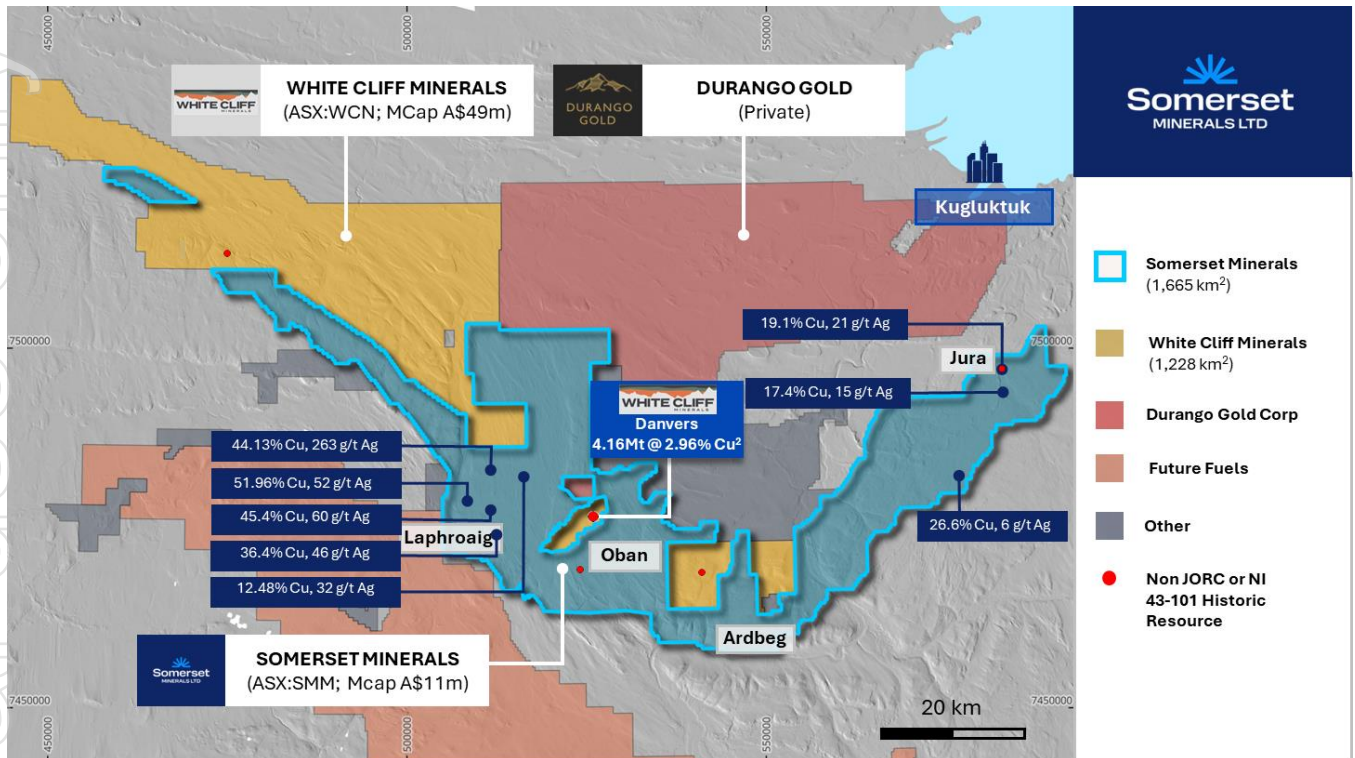


Figure 8: Regional overview showing Somerset's extensive landholding in the Coppermine region & previous rock chip results³. See ASX:SMM 26/06/25.

While the entire land package remains highly prospective, the region has seen very little exploration activity since the 1960s. Leveraging off these historical work and modern interpretation, the company has identified four high priority targets, namely:

- Laphroaig District:** Immediately along strike from White Cliff Minerals' Vision District (Don & Pat prospects) which recently returned high-grade rock chip samples up to **64.02% Cu & 152g/t Ag⁵**. The continuity of high-grade mineralisation at Somerset's Laphroaig District is supported by a number of high-grade rock chip samples including **45.4% Cu & 60.0 g/t Ag⁶**, as well as historic drilling. Recently completed drilling at the Company's Larry prospect returned **42.7 metres @ 2.69% Cu** from 15.2 metres, including **16.8 metres @ 3.96% Cu** from 41.2 metres.
- Ardbeg District:** Located immediately south of White Cliff Minerals' Thor and Rocket Districts (Halo and Cu-Tar targets) which recently returned high-grade rock chip samples up to **54.02% Cu & 34g/t Ag⁵**. Somerset's dominant land position surrounding the Thor and Rocket Districts is supported by a number of historic drill holes and surface sampling.
- Jura District:** Located to the east of the main project area, Jura consists of a 7.0km high-grade mineralised trend and includes a historical drill defined resource to the north, with the broader 7km trend supported by high-grade rock chips including **19.10% Cu and 21.1g/t Ag⁶**. Recently completed drilling at Jura North returned **29.0 metres @ 0.67% Cu** from 7.6 metres, including **12.2 metres @ 1.23% Cu** from 7.6 metres.
- Oban District:** Located immediately to the south of White Cliff's Danvers historic resource of 4.1Mt @ 2.96% Cu⁷, the Oban District hosts the **Coronation prospect** which contains a historic resource which remains open at depth and along strike. Historical drilling, surface sampling and geophysics (electromagnetic and induced

⁵ Refer to ASX:WCN 29/10/2024.

⁶ Refer to ASX:SMM 10/12/2024

⁷ Refer to ASX:WCN 26/11/2024. There is no certainty that further work by the Company will lead to achieving the same size, shape, grade, or form of the comparison resource or project. The Company's project is in a different stage of development and further exploration needs to be undertaken to further prove or disprove any comparison.

SOMERSET MINERALS LTD

Level 2, 22 Mount Street, Perth WA 6000

Postal Address:

PO Box 7054, Cloisters Square, Perth WA 6850

P: +61 8 6188 8181

F: +61 8 6188 8182

E: info@somersetminerals.com.au

ASX Announcement

4th August 2025

polarisation) serve to provide drill ready targets. To the Company's knowledge, there has been no material exploration at the Coronation prospect since the early 70's.⁸

This announcement is authorised by the Board of Directors.

– END –

For further information:

Somerset Minerals Limited

Chris Hansen (Managing Director)

Phone: +61 8 6188 8181

⁸ See ASX:SMM Announcement dated 10/12/2024 – Acquisition of High-Grade Copper project Adjacent to White Cliff Minerals. The historic resource estimate for White Cliff's Danvers prospect is not in accordance with the JORC Code. The Company notes that the estimate and historic drilling results dated 1967 and 1968 are not reported in accordance with the NI 43-101 or JORC Code 2012. A competent person has not done sufficient work to disclose the estimate/results in accordance with the JORC Code 2012. It is possible that following further evaluation and/or exploration work that the confidence in the estimate and reported exploration results may be reduced when reported under the JORC Code 2012. Nothing has come to the attention of the Company that causes it to question the accuracy or reliability of the historical exploration results, but the Company has not independently validated the historical exploration results and therefore is not to be regarded as reporting, adopting or endorsing the historical exploration results.

SOMERSET MINERALS LTD

Level 2, 22 Mount Street, Perth WA 6000

Postal Address:

PO Box 7054, Cloisters Square, Perth WA 6850

P: +61 8 6188 8181

F: +61 8 6188 8182

E: info@somersetminerals.com.au

COPPERMINE 2025 DRILLING SIGNIFICANT INTERCEPTS & DRILL COLLAR LOCATIONS

| Hole ID | Datum | CRS | Easting | Northing | RL | Azimuth | Dip | Depth | From | To | Width | Cu (%) | Ag (g/t) | |
|---------|-------|--------------|---------|----------|-----|---------|-----|-------|-------|------|---------|--------|----------|------|
| JURC001 | NAD83 | UTM Zone 11N | 582891 | 7496693 | 222 | 291 | -45 | 93.0 | 15.2 | 57.9 | 42.7 | 2.69 | 3.41 | |
| | | | | | | | | | incl. | 41.1 | 57.9 | 16.8 | 3.96 | 5.46 |
| | | | | | | | | | | 15.2 | 21.3 | 6.1 | 5.51 | 5.47 |
| LARC002 | NAD83 | UTM Zone 11N | 509936 | 7480237 | 387 | 52 | -45 | 50.3 | 7.6 | 36.6 | 29.0 | 0.67 | 2.15 | |
| | | | | | | | | | incl. | 7.6 | 19.8 | 12.2 | 1.23 | 3.96 |
| LARC001 | NAD83 | UTM Zone 11N | 515903 | 7482843 | 320 | 55 | -45 | 68.6 | | | Pending | | | |
| JURC002 | NAD83 | UTM Zone 11N | 582938 | 7496755 | 232 | 269 | -60 | 149.4 | | | Pending | | | |
| JURC003 | NAD83 | UTM Zone 11N | 583070 | 7493699 | 257 | 271 | -45 | 103.6 | | | Pending | | | |
| JURC004 | NAD83 | UTM Zone 11N | 582970 | 7494220 | 246 | 289 | -50 | 153.9 | | | Pending | | | |
| CORC001 | NAD83 | UTM Zone 11N | 524038 | 7468983 | 485 | 281 | -46 | 102.1 | | | Pending | | | |
| CORC002 | NAD83 | UTM Zone 11N | 524047 | 7469089 | 481 | 280 | -45 | 117.4 | | | Pending | | | |
| CORC003 | NAD83 | UTM Zone 11N | 527114 | 7468228 | 471 | 269 | -50 | 109.7 | | | Pending | | | |

Table 1. Significant intercepts and collar information for 2025 RC drilling. Significant intercepts were reported using a 0.15% Cu cut-off, allowing for up to 4.57 metres of internal dilution. No top cuts were applied.

COMPETENT PERSONS STATEMENT

The information in this report that relates to Exploration Results is based on information compiled by Mr Alex Vilela who is a Member of the Australasian Institute of Mining and Metallurgy and is the Exploration Manager for the Company. Mr Vilela has sufficient experience that is relevant to the style of mineralisation and type of deposit under consideration and to the activity which he is undertaking to qualify as a Competent Person as defined in the 2012 Edition of the Australasian Code for Reporting of Exploration Results, Mineral Resources and Ore Reserves. Mr Vilela consents to the inclusion in this report of the matters based on this information in the form and context in which it appears.

CAUTIONARY STATEMENT - VISUAL OBSERVATIONS

Visual observations of the presence of rock or mineral types and abundance should never be considered a proxy or substitute for petrography and laboratory analyses where mineral types, concentrations or grades are the factor of principal economic interest. Visual observations and estimates also potentially provide no information regarding impurities or deleterious physical properties relevant to valuations. At this stage it is too early for the Company to make a determinative view on the abundances of any of these minerals. These abundances will be determined more accurately through petrographic and assay analysis. The observed presence of sulphides and oxides does not necessarily equate to copper or silver mineralisation. It is not possible to estimate the concentration of mineralisation by visual estimation and this will be determined by chemical analysis.

FORWARD-LOOKING INFORMATION AND STATEMENTS

The information contained in this release is not investment or financial product advice and is not intended to be used as the basis for making an investment decision. Please note that, in providing this release, the Company has not considered the objectives, financial position or needs of any particular recipient. The information contained in this release is not a substitute for detailed investigation or analysis of any particular issue and does not purport to be all of the information that a person would need to make an assessment of the Company or its assets. Current and potential investors should seek independent advice before making any investment decisions in regard to the Company or its activities.

This announcement includes “forward-looking statements” within the meaning of securities laws of applicable jurisdictions. Forward-looking statements can generally be identified by the use of the words “anticipate”, “believe”, “expect”, “project”, “forecast”, “estimate”, “likely”, “intend”, “should”, “could”, “may”, “target”, “plan”, “guidance” and other similar expressions. Indications of, and guidance on, future earning or dividends and financial position and performance are also forward-looking

SOMERSET MINERALS LTD

Level 2, 22 Mount Street, Perth WA 6000
Postal Address:
PO Box 7054, Cloisters Square, Perth WA 6850

P: +61 8 6188 8181
F: +61 8 6188 8182
E: info@somersetminerals.com.au

statements. Such forward-looking statements involve known and unknown risks, uncertainties, assumptions and other important factors, many of which are beyond the control of the Company, and which may cause actual results, performance or achievements to differ materially from those expressed or implied by such statements.

Forward-looking statements are provided as a general guide only, and should not be relied on as an indication or guarantee of future performance. Given these uncertainties, recipients are cautioned to not place undue reliance on any forward-looking statement. Subject to any continuing obligations under applicable law the Company disclaims any obligation or undertaking to disseminate any updates or revisions to any forward-looking statements in this document to reflect any change in expectations in relation to any forward-looking statements or any change in events, conditions or circumstances on which any such statement is based.

This announcement is not, and does not constitute, an offer to sell or the solicitation, invitation or recommendation to purchase any securities and neither this announcement nor anything contained in it forms the basis of any contract or commitment.

PROXIMATE STATEMENTS

This announcement contains references to JORC Mineral Resources derived by other parties either nearby or proximate to the Project and includes references to topographical or geological similarities to that of the Project. It is important to note that such discoveries or geological similarities do not in any way guarantee that the Company will have any success or similar successes in delineating a JORC compliant Mineral Resource on the Project, if at all.

PREVIOUSLY ANNOUNCED EXPLORATION RESULTS

The Company confirms it is not aware of any new information or data which materially affects the information included in the original market announcements referred to in this announcement and the information included in the originally market announcements continues to apply. The Company confirms the form and context in which the Competent Person's findings are presented have not been materially modified from the original market announcements.

ABOUT SOMERSET MINERALS LIMITED

Somerset Minerals Limited ("Somerset") is a growth orientated base metals and gold exploration company listed on ASX ("SMM"). Somerset is actively exploring projects located in Canada and Ecuador, including the Prescott Project in Nunavut which is interpreted to host an anticlinal repetition of the same geological formation hosting American West Metals Limited's (ASX:AW1) Storm Copper Project⁹ and the Blackdome-Elizabeth Joint Venture Project, a high-grade gold past producing project located in Southern British Columbia. Additionally, the Company holds two exploration projects located in south-east Ecuador, the Rio Zarza and the Valle del Tigre projects.

⁹ Refer to AW1'S ASX Announcement on 30/01/2024 - Maiden JORC MRE for Storm. There is no certainty that further work by the Company will lead to achieving the same size, shape, grade, or form of the comparison resource. The Company's project is in a different stage of development and further exploration needs to be undertaken to further prove or disprove any comparison.

SOMERSET MINERALS LTD

Level 2, 22 Mount Street, Perth WA 6000
Postal Address:
PO Box 7054, Cloisters Square, Perth WA 6850

P: +61 8 6188 8181
F: +61 8 6188 8182
E: info@somersetminerals.com.au

THE FOLLOWING TABLES ARE PROVIDED TO ENSURE COMPLIANCE WITH THE JORC CODE (2012 EDITION) FOR THE REPORTING OF EXPLORATION RESULTS.

COPPERMINE PROJECT

SECTION 1 – SAMPLING TECHNIQUES AND DATA

(Criteria in this section apply to all succeeding sections.)

| Criteria | JORC Code explanation | Commentary |
|------------------------------|---|--|
| Sampling techniques | <i>Nature and quality of sampling (e.g. cut channels, random chips, or specific specialised industry standard measurement tools appropriate to the minerals under investigation, such as down hole gamma sondes, or handheld XRF instruments, etc). These examples should not be taken as limiting the broad meaning of sampling.</i> | Reverse circulation (RC) drilling has been conducted in 2025. The drillholes were sampled in their entirety on 5-foot (1.524m) intervals. Returned material was passed through a level 3-tier riffle splitter, producing a 12.5% sample split and a 87.5% retention sample. Representative chips for logging were taken from the retention sample by sieving from the retention sample. Chips are washed and logged at the drill site location, prior to storage in chip trays. 2025 Rock chip samples were collected from in-situ, subcrop, or occasionally float material at surface determined by the supervising field geologist. Sample weights range from 1-3kg, and are photographed and put into marked calico bags for assay submission. |
| | <i>Include reference to measures taken to ensure sample representivity and the appropriate calibration of any measurement tools or systems used.</i> | Samples of different lithologies, alterations and mineralisation styles were collected based on visual appearance. |
| | <i>Aspects of the determination of mineralisation that are Material to the Public Report.</i> | Samples from the 2025 RC drilling were sent to ALS Yellowknife via secure air freight, received by an employee of Aurora Geosciences Ltd, who ensured sample security and maintained custody until delivery to ALS laboratories, Yellowknife for preparation. Preparation comprised prep code PREP-31B, which entails crushing to 70% less than 2mm, riffle splitting 1kg, with the split pulverised to better than 85% passing 75 microns, followed by multi-element ICP-MS analysis after 4-acid digestion (ME-MS61). Where samples were observed or suspected to contain native copper, they were tested by Cu-SCR21. Overlimit copper was tested by Cu-OG62 and Cu-VOL61. Overlimit silver was tested by 50g ME-GRA22 which also assays for gold. 2025 rock chip samples were prepared under code PREP-31, and analysed by ME-MS61. Where samples were observed or suspected to contain native copper, they were tested by Cu-SCR21. Overlimit copper was tested by Cu-OG62 and Cu-VOL61. Overlimit silver was tested by 50g ME-GRA22 which also assays for gold. |
| Drilling techniques | <i>Drill type (e.g. core, reverse circulation, open-hole hammer, rotary air blast, auger, Bangka, sonic, etc) and details (e.g. core diameter, triple or standard tube, depth of diamond tails, face-sampling bit or other type, whether core is oriented and if so, by what method, etc).</i> | 2025 RC drilling was completed by reverse circulation (RC) drilling methods by Midnight Sun Drilling Inc. utilising a heli-portable hornet machine. 5-foot rod intervals with a 3.5-inch face sampling hammer with inner-tube assembly and 3.5-inch string diameter. |
| Drill sample recovery | <i>Method of recording and assessing core and chip sample recoveries and results assessed.</i> | 2025 RC drilling recorded sample recovery and sample condition at the rig site during drilling operation. An estimation (qualitative) of recovery was completed on the sample returned from the complete drill interval if loss is believed to have occurred. |

SOMERSET MINERALS LTD

Level 2, 22 Mount Street, Perth WA 6000

Postal Address:

PO Box 7054, Cloisters Square, Perth WA 6850

P: +61 8 6188 8181

F: +61 8 6188 8182

E: info@somersetminerals.com.au

| Criteria | JORC Code explanation | Commentary |
|---|--|---|
| | <i>Measures taken to maximise sample recovery and ensure representative nature of the samples.</i> | No material losses were observed, any instances of loss would have been discussed between rig geologist and driller. Sample weights were continuously monitored. |
| | <i>Whether a relationship exists between sample recovery and grade and whether sample bias may have occurred due to preferential loss/gain of fine/coarse material.</i> | During 2025 drilling wet samples have not been encountered. Sample bias is believed to be negligible due to a preferential loss of fine/coarse material. Riffle splitting of the returned material produces a homogenous and representative sample for each respective interval. |
| Logging | <i>Whether core and chip samples have been geologically and geotechnically logged to a level of detail to support appropriate Mineral Resource estimation, mining studies and metallurgical studies.</i> | During 2025 RC Drilling all intervals returned are logged for alteration, lithology and mineralisation at the drill rig location. 2025 rock chip sampling was undertaken on surface alongside lithologic, alteration and mineralisation logging. Data input presented in tabulated form alongside coordinates and sample numbers. |
| | <i>Whether logging is qualitative or quantitative in nature. Core (or costean, channel, etc) photography.</i> | Geological logging is based on both qualitative identification of geological characteristics, and semi-quantitative estimates of mineral abundance. |
| | <i>The total length and percentage of the relevant intersections logged.</i> | All samples have been logged as per the above categories. |
| Sub-sampling techniques and sample preparation | <i>If core, whether cut or sawn and whether quarter, half or all core taken.</i> | Not applicable for this announcement as no diamond core drilling is being reported. |
| | <i>If non-core, whether riffled, tube sampled, rotary split, etc and whether sampled wet or dry.</i> | Holes were sampled in full using 1.52m intervals as per the 5-foot rod lengths of the rig. Assay samples were collected as a 12.5% split from a 3-tier riffle splitter used to ensure a homogenous and representative sample of the drilled interval. Samples were all dry. |
| | <i>For all sample types, the nature, quality and appropriateness of the sample preparation technique.</i> | Sample size is deemed appropriate for the target base metal mineralisation style, which is hosted by disseminated to massive copper sulphides and their associated secondary minerals (malachite, azurite, chrysocolla). |
| | <i>Quality control procedures adopted for all sub-sampling stages to maximise representivity of samples.</i> | The sample from the RC return hose goes into a cyclone, which is cleaned periodically as needed to avoid any sample build up on the inside. The bucket collecting the sample from the cyclone is cleaned out with a brush and/or scraper after every sample has been collected. The 3-tier riffle splitter is kept dry and on flat ground to ensure samples don't stick to the riffles, and that samples fall evenly through the device. The supervising rig geologist oversees this operation, supplemented by periodic site inspections from the Exploration Manager. |
| | <i>Measures taken to ensure that the sampling is representative of the in-situ material collected, including for instance results for field duplicate/second-half sampling.</i> | The entire returned sample from drilling a 1.52m (5 ft) rod is placed into the riffle splitter, which passes through a 3-tier splitter, creating a representative 12.5% sample for assay. Field duplicate samples were taken by re-splitting the 87.5% retention samples back through the riffle splitter, to form a new duplicate sample and retention sample. |
| | <i>Whether sample sizes are appropriate to the grain size of the material being sampled.</i> | Sample size for RC drilling is considered appropriate for this style of base metal mineralisation, as sulphides and other minerals containing copper are crushed into chips and dust by the RC drilling, and then a homogenous sample is taken. Sample size for rock chip samples is deemed sufficient to represent the target mineralisation. |
| | <i>The nature, quality and appropriateness of the assaying and laboratory procedures used and</i> | Samples were prepared by ALS Yellowknife prep code PREP-31, which entails crushing to a target of 70% passing 2mm, |

| Criteria | JORC Code explanation | Commentary |
|--|---|--|
| Quality of assay data and laboratory tests | <i>whether the technique is considered partial or total.</i> | riffle splitting off 250g, and then pulverising the split to a target of 85% passing 75 µm. The samples were then assayed via ME-MS61 which comprises multi-element ICP-MS analysis after a 4-acid digestion, which is considered a near-total digestion except for barite, rare earth oxides, columbite-tantalite, and titanium, tin and tungsten materials, which may not be fully digested. Where samples were observed or suspected to contain native copper, they were tested by Cu-SCR21. Overlimit copper was tested by Cu-OG62 and Cu-VOL61. Overlimit silver was tested by 50g ME-GRA22 which also assays for gold. |
| | <i>For geophysical tools, spectrometers, handheld XRF instruments, etc, the parameters used in determining the analysis including instrument make and model, reading times, calibrations factors applied and their derivation, etc.</i> | A handheld K-10 magnetic susceptibility metre was used to take magnetic measurements of the retention bags. Each bag had a measurement taken at three different locations, and the results were averaged. The device was periodically calibrated as needed. |
| | <i>Nature of quality control procedures adopted (e.g. standards, blanks, duplicates, external laboratory checks) and whether acceptable levels of accuracy (i.e. lack of bias) and precision have been established.</i> | 2025 RC drilling adopted a schedule of quality control samples is inserted into the sample stream at a rate of 5 standards per every 100 samples, 3 field duplicates per every 100 samples, and 5 coarse blanks for every 100 samples. Coarse blanks and standards were supplied by OREAS, and were selected to represent a range in different mineralisation tenor. Field duplicates were taken from the retention sample by re-splitting it through the riffle splitter to produce a new sample. ALS Canada additionally inserts their own QAQC protocol, including standards, blanks and duplicates, which are provided with the assay data. The quality control procedures adopted for the 2025 rock chip are appropriate for reconnaissance rock chip sampling. |
| Verification of sampling and assaying | <i>The verification of significant intersections by either independent or alternative company personnel.</i> | For the 2025 RC drilling all primary data collection was completed by Somerset Minerals employees or contracting geologists from Apex Geosciences Ltd. All sample results will be received directly from ALS Laboratories to the Exploration Manager and Managing Director (geologist) for review. |
| | <i>The use of twinned holes.</i> | No twin holes are reported. |
| | <i>Documentation of primary data, data entry procedures, data verification, data storage (physical and electronic) protocols.</i> | Rock chip and mapping data was digitally recorded in the field on mapping devices, and subsequently compiled within excel spreadsheets, and finally reviewed by Somerset's Exploration Manager. |
| | <i>Discuss any adjustment to assay data.</i> | No adjustment to assay data. Reported intervals are calculated by weighted average accounting for sample length and reported concentration. Results from ME-MS61 return copper values in parts-per-million, which were then converted to percent by dividing the value by 10,000. All values have been rounded to two decimal places. This was reviewed by the Exploration Manager (Competent Person) and the Managing Director (Geologist). 2025 RC drilling– drilled intervals are recorded on site in feet (Imperial) and later converted to metres (metric) as per 1 |

| Criteria | JORC Code explanation | Commentary |
|--|--|--|
| | | foot = 0.3048 metres. |
| Location of data points | <i>Accuracy and quality of surveys used to locate drill holes (collar and down-hole surveys), trenches, mine workings and other locations used in Mineral Resource estimation.</i> | Locations of reported rock chip samples / assay results / drill collars are in NAD83 / UTM Zone 11N, EPSG: 26911. Method of locating rock samples are by handheld GPS which are accurate to 1-5 m. |
| | <i>Specification of the grid system used.</i> | |
| | <i>Quality and adequacy of topographic control.</i> | Topography is determined by an open-source DTM, which has a resolution of 2m. |
| Data spacing and distribution | <i>Data spacing for reporting of Exploration Results.</i> | Data is spaced on outcrops of copper mineral showings/outcrops or areas of interest identified by geophysics, previous mapping, prospective lithologies, alteration and visible mineralisation. |
| | <i>Whether the data spacing, and distribution is sufficient to establish the degree of geological and grade continuity appropriate for the Mineral Resource and Ore Reserve estimation procedure(s) and classifications applied.</i> | Rock chip assays or soil sample assays being reported are from outcrops and taken along geological structures, and not suitable for an MRE. There is not yet enough drilling data to establish grade continuity appropriate for a Mineral Resource or Ore Reserve. |
| | <i>Whether sample compositing has been applied.</i> | No sample compositing was applied. |
| Orientation of data in relation to geological structure | <i>Whether the orientation of sampling achieves unbiased sampling of possible structures and the extent to which this is known, considering the deposit type.</i> | Rock chip samples were taken from areas of outcrop where mineralisation is observed, or areas of interest identified by geophysical methods, remote sensing, or previous mapping. No channel sampling samples have been reported. The collection of rock chip samples does not quantify the scale, extent, grade or subsurface continuity of mineralisation at each location. |
| | <i>If the relationship between the drilling orientation and the orientation of key mineralised structures is considered to have introduced a sampling bias, this should be assessed and reported if material.</i> | Drillholes were drilled perpendicular or sub-perpendicular to the interpreted orientation of mineralisation. Structural data collected in the field by the company personnel was used to inform the direction and dip of planned drillholes. The majority of the targeted mineralised structures drilled in 2025 are interpreted to be on north-south trending faults, and drillholes were drilled perpendicular or sub-perpendicular to this orientation. The orientation of structures in relation to drillhole azimuth and dip is not interpreted to have introduced any sampling bias. |
| Sample security | <i>The measures taken to ensure sample security.</i> | Samples were bagged and sealed prior to shipping from site to Yellowknife where an Aurora Geosciences employee delivered the samples to ALS laboratory in Yellowknife, ensuring sample security and custody. |
| Audits or reviews | <i>The results of any audits or reviews of sampling techniques and data.</i> | No audits have been undertaken. |

SECTION 2 – REPORTING OF EXPLORATION RESULTS

(Criteria in this section apply to all succeeding sections.)

| Criteria | JORC Code explanation | Commentary |
|--|---|--|
| Mineral tenement and land tenure status | <i>Type, reference name/number, location and ownership including agreements or material issues with third parties such as joint ventures, partnerships, overriding royalties, native title interests, historical sites, wilderness or national park and environmental settings.</i> | The Coppermine Project is located in the Kitikmeot region of Nunavut, Canada, near the Coronation Gulf coastline. The closest community is Kugluktuk. The project consists of 102 exploration licences and one exclusive exploration right executed with Nunavut Tunngavik Incorporated (NTI) which are 100% owned by Somerset Minerals through its Australian subsidiary Sentinel Resources Pty Ltd, through its 100% owned local subsidiary 1501253 B.C. Ltd. The project will be subject to a 1.5% net smelter royalty on future production from the licences acquired from Sentinel Resources Pty Ltd and any subsequent licences acquired within the area comprising the Coppermine Project in the first 24 months from completion of the acquisition. Land parcels CO-54 and CO-58, located on Inuit-Owned Subsurface land, account for 15.44% of the project area. These parcels are subject to a 12% net profit royalty (NPR) on future production, payable to NTI. This royalty allows for a maximum annual deduction of 70%. Notably, there are no additional government royalties. A net profit royalty (NPR) is calculated as a percentage of the gross revenue from the sale of minerals, minus all costs associated with production, operations, treatment, selling, and capital expenses. This differs from a net smelter return royalty (NSR), which is a percentage of the sale price of minerals after deducting specific costs, such as transportation from the mine to the smelter, as well as treatment, smelting, and refining charges, including penalties. For context, the NSR equivalent of a 12% NPR royalty with a maximum deduction of 70% would approximate an NSR equivalent royalty of ~3.6%. By comparison, the current ad valorem royalty rate under Western Australia's Mining Act 1978 is 5%. Currently 49 licences either fully or partially reside on the Inuit Owned Surface lands of the Kitikmeot Inuit Association, consisting of claims 104729, 104726, 104727, 105036, 104941, 104731, 104740, 104787, 104793, 104744, 104766, 104748, 104752, 104754, 104755, 104746, 104750, 104751, 104760, 104792, 104756, 104758, 104759, 104761, 104762, 104763, 104747, 104764, 105125, 105126, 105119, 105120, 105121, 105123, 105147, 105139, 105124, 105128, 105129, 105135, 105137, 105138, 105127, 105122, and CO-54 / CO-58. In total 46% of the project area is on Inuit Owned Land and requires an access permit. Field activities require a land use permit from the Nunavut Government. |
| | <i>The security of the tenure held at the time of reporting along with any known impediments to obtaining a licence to operate in the area.</i> | The tenements are in good standing. |
| Exploration done by other parties | <i>Acknowledgment and appraisal of exploration by other parties.</i> | Previous exploration in the Coppermine area predominantly consists of mapping, outcrop sampling, selected ground geophysical surveys, and limited historical drilling. The first significant exploration in the Coppermine River area began in 1916 with Geological Survey of Canada mapping, followed by limited staking and drilling in the 1920s and 1940s. Sporadic activity continued from 1951 to 1960, including mapping and early drilling. A major staking |

SOMERSET MINERALS LTD

Level 2, 22 Mount Street, Perth WA 6000

Postal Address:

PO Box 7054, Cloisters Square, Perth WA 6850

P: +61 8 6188 8181

F: +61 8 6188 8182

E: info@somersetminerals.com.au

| Criteria | JORC Code explanation | Commentary |
|---------------------------------|--|---|
| | | rush occurred in the late 1960s, sparked by drill results from the Dot 47 (Danvers), Bornite Lake, and Dick (Halo) showings. Despite extensive mapping, geophysical surveys, and shallow drilling, exploration slowed by 1970 due to unstable copper prices. From 1990 to 2010, companies like Noranda, Cominco, and Kaizen Discovery conducted limited exploration. Tundra Copper Corp's 2014 staking campaign secured 300km ² of ground, later expanded to 3,600 km ² after acquisition by Kaizen Discovery, which was then sold to Durango Gold. In 2015, Arctic Copper Corp was formed by former Tundra personnel, pegging additional ground before its acquisition by Sitka Gold Corp. |
| Geology | <i>Deposit type, geological setting and style of mineralisation.</i> | The area is prospective for primary high-grade copper and silver mineralisation, occurring as sulphides, oxides, and native metals. High-grade chalcocite-rich sub-vertical fault zones contain the highest grade and most geometrically extensive of known occurrences in the region. This style is 'fault-hosted' copper mineralisation and is interpreted to be analogous to the structurally controlled mineralisation in the Keweenaw flood basalts in Michigan, and shares similarities with structurally controlled deposits in the Mt Isa region in Queensland such as the Rocklands deposit. Typical sedimentary-hosted copper mineralisation similar to the Kupferschiefer-style are known to occur within the project area, hosted within the Rae Group sediments and Husky Creek Formation, both of which overlie the Copper Creek Formation basalts. Flow-top breccia/replacement style copper occurring as native copper is seen throughout the project area, and is very similar to deposits and style such as the Cliff Mine on the Keweenaw Peninsula in Michigan, a major historic copper producing region. Magmatic sulphide styles of mineralisation are present within the nearby layered MuskoX Intrusion to the southeast which is interpreted to be the source of the Copper Creek Formation basalts, and minor primary copper sulphides have been found in dolerite dykes and sills throughout the project area. |
| Drill hole Information | <p><i>A summary of all information material to the understanding of the exploration results including a tabulation of the following information for all Material drill holes:</i></p> <ul style="list-style-type: none"> ○ <i>easting and northing of the drill hole collar</i> ○ <i>elevation or RL (Reduced Level – elevation above sea level in metres) of the drill hole collar</i> ○ <i>dip and azimuth of the hole</i> ○ <i>down hole length and interception depth</i> ○ <i>hole length.</i> <p><i>If the exclusion of this information is justified on the basis that the information is not Material and this exclusion does not detract from the understanding of the report, the Competent Person should clearly explain why this is the case.</i></p> | This information is provided in table 3. |
| Data aggregation methods | <i>In reporting Exploration Results, weighting averaging techniques, maximum and/or</i> | To calculate significant intercepts, a 0.15% Cu cutoff was used, with up to 4.57m internal dilution. No top cuts were |

| Criteria | JORC Code explanation | Commentary |
|---|--|--|
| | <i>minimum grade truncations (e.g. cutting of high grades) and cut-off grades are usually Material and should be stated.</i> | applied. |
| | <i>Where aggregate intercepts incorporate short lengths of high-grade results and longer lengths of low grade results, the procedure used for such aggregation should be stated and some typical examples of such aggregations should be shown in detail.</i> | No metal equivalent values are being used. |
| | <i>The assumptions used for any reporting of metal equivalent values should be clearly stated.</i> | No metal equivalent values are being used. |
| Relationship between mineralisation widths and intercept lengths | <i>These relationships are particularly important in the reporting of Exploration Results.</i> | Mineralised intercepts are considered to be 'drilled' intercepts and not true widths, until a more accurate structural database is collected from oriented diamond core. No channel sampling has been reported. |
| | <i>If the geometry of the mineralisation with respect to the drill hole angle is known, its nature should be reported.</i> | Structural data collected in the field by the company personnel was used to inform the direction and dip of planned drillholes. The majority of the targeted mineralised structures drilled in 2025 are interpreted to be on north-south trending faults, and drillholes were drilled perpendicular or sub-perpendicular to this orientation. Drillholes were drilled perpendicular or sub-perpendicular to the interpreted orientation of mineralisation. |
| | <i>If it is not known and only the down hole lengths are reported, there should be a clear statement to this effect (e.g. 'down hole length, true width not known').</i> | Mineralised intercepts are downhole length, true width not known. Drillholes were drilled perpendicular or sub-perpendicular to interpreted orientation of mineralised structure. |
| Diagrams | <i>Appropriate maps and sections (with scales) and tabulations of intercepts should be included for any significant discovery being reported. These should include, but not be limited to a plan view of drill hole collar locations and appropriate sectional views.</i> | Location maps of projects within the release with relevant exploration information contained. |
| Balanced reporting | <i>Where comprehensive reporting of all Exploration Results is not practicable, representative reporting of both low and high grades and/or widths should be practiced to avoid misleading reporting of Exploration Results.</i> | The accompanying document is considered to be a balanced and representative report. |
| Other substantive exploration data | <i>Other exploration data, if meaningful and material, should be reported including (but not limited to): geological observations; geophysical survey results; geochemical survey results; bulk samples – size and method of treatment; metallurgical test results; bulk density, groundwater, geotechnical and rock characteristics; potential deleterious or contaminating substances.</i> | No further exploration data of note is being reported. Work is ongoing to integrate available geological datasets. |
| Further work | <i>The nature and scale of planned further work (e.g. tests for lateral extensions or depth extensions or large-scale step-out drilling). Diagrams clearly highlighting the areas of possible extensions, including the main</i> | Future work will involve the continued review of all available existing historical data for the Coppermine project, including georeferencing historic geological maps, sections, rock chips, trenching, and drillholes. The company will utilise 2025 field data from mapping, rock chip |

| Criteria | JORC Code explanation | Commentary |
|----------|---|--|
| | <i>geological interpretations and future drilling areas, provided this information is not commercially sensitive.</i> | sampling, drilling, and structural mapping, to guide future exploration, which will likely involve a regional geochemical sampling program, aerial geophysical and ground geophysical exploration techniques. This data will be used to plan follow up drilling to test down-dip and along strike continuations of mineralised intercepts encountered in 2025 drilling, and regional data sets will be used to vector in on areas for follow up geophysical surveys and drill testing. |

For personal use only

SOMERSET MINERALS LTD

Level 2, 22 Mount Street, Perth WA 6000
Postal Address:
PO Box 7054, Cloisters Square, Perth WA 6850

P: +61 8 6188 8181
F: +61 8 6188 8182
E: info@somersetminerals.com.au