

FIRST PHASE 4 RC HOLES COMPLETE AT MULGA TANK

HIGHLIGHTS

- Exploration update on the progress of Phase 4 drilling at the Mulga Tank Ni-Co-Cu-PGE Project
- Completion of first 4 RC holes within the main body of the Mulga Tank Complex - stepping out to the south of previous drilling
- Visible sulphide mineralisation seen in all four holes - extending known mineralisation outside the current Mineral Resource Estimate
- Rig has moved up to the *Panhandle* completing a diamond tail to Phase 3 RC hole MTRC063 (EIS7) and has now commenced the first EIS diamond hole MTD030 (EIS8)
- DHEM survey completed on Phase 3 RC holes MTRC046, MTRC051, MTRC055 and MTRC056 which previously returned shallow high-grade intersections
- Off-hole conductive plate anomaly modelled below hole MTRC055 - drill design for possible diamond tail extension and/or diamond twin hole in progress

Western Mines Group Ltd (WMG or Company) (**ASX:WMG**) is pleased to update shareholders on the progress of exploration activities at the Mulga Tank Ni-Cu-Co-PGE Project, on the Minigwal Greenstone Belt, in Western Australia's Eastern Goldfields; including the current Phase 4 drilling program and recent multi-hole Down Hole ElectroMagnetic (DHEM) survey.

The first four reverse circulation (RC) holes of the Phase 4 program have been drilled, totalling 1,309m. These holes are all located within the main body of the Mulga Tank Ultramafic Complex. The holes were designed to step out to the south of previous drilling and test new areas of the Complex. All four holes encountered visible sulphide mineralisation, extending known mineralisation outside the current Mineral Resource shell.

The drill rig has now converted to diamond drilling and moved up to the *Panhandle*, within tenement E39/2134, completing a diamond tail to previous Phase 3 RC hole MTRC063 (EIS7) and has commenced MTD030 (EIS8). This diamond hole will be drilled with the aid of one of WMG's current Exploration Incentive Scheme (EIS) grants (*ASX, WMG Wins Two EIS Awards Totalling \$440,000 for Mulga Tank, 28 April 2025*).

A multi-hole DHEM survey was completed during July, successfully surveying Phase 3 RC holes MTRC046, MTRC051, MTRC055 and MTRC056 which all showed intersections of shallow high-grade mineralisation. Anomalism associated with sulphide mineralisation was detected in the holes, with an interesting off-hole anomaly below MTRC055, to be modelled and tested with a diamond tail extension and/or diamond twin hole.

Western Mines Group Ltd

Level 3, 33 Ord Street
West Perth WA 6005

ASX:WMG

Telephone: +61 475 116 798
Email: contact@westernmines.com.au

www.westernmines.com.au

Shares on Issue: 96.79m
Share Price: \$0.23
Market Cap: \$22.26m
Cash: \$1.56m (30/06/25)

Commenting on the progress of the Phase 4, WMG Managing Director Dr Caedmon Marriott said:

"The team is pleased to be back onsite for our latest round of drilling at Mulga Tank and they've got stuck straight into drill more visible sulphide mineralisation. These first four RC holes form a wide-spaced fence approximately 300m to the south of previous drilling, with the holes around 400m apart. All four holes showed visible disseminated, and some coarser, sulphide mineralisation, extending areas of known mineralisation outside the current Mineral Resource shell.

The rig has moved up to tenement E39/2134 where we've completed a diamond tail to previous hole MTRC063 (EIS7) and commenced the first EIS hole MTD030 (EIS8). The MTRC063 diamond tail verified our modelling of the geometry of this ~1.3km long olivine cumulate body and MTD030 will now look to drill a complete geological section through the body and test its basal contact.

Initial results from the DHEM survey have highlighted an interesting conductive anomaly at depth below and to the south of hole MTRC055. Modelling of this anomaly will hope to identify a target that will be drilled by either a diamond tail to MTRC055 and/or a second twin hole."

MULGA TANK EXPLORATION PROGRAMS

Exploration results from the Company's various drilling programs at the Mulga Tank Project over the last three years have demonstrated significant nickel sulphide mineralisation and an extensive nickel sulphide mineral system within the Mulga Tank Ultramafic Complex.

WMG has undertaken a combination of both diamond and reverse circulation (RC) drilling. With this two pronged approach, RC is used to infill and prove up the extent of shallow disseminated nickel sulphide mineralisation, defined by the Company's recent Mineral Resource Estimate (ASX, *Mulga Tank Mineral Resource Over 5Mt Contained Nickel, 10 April 2025*), whilst the diamond drilling program continues to test deeper targets for basal massive sulphide.

The Company has planned a Phase 4 drilling program with a combination of both further RC and diamond drilling (ASX, *Exploration Drilling to Recommence at Mulga Tank, 30 June 2025*), funded by our recent capital raise (ASX, *Capital Raise to Recommence Drilling at Mulga Tank, 27 May 2025*) and successful EIS grants (ASX, *WMG Wins Two EIS Awards Totalling \$440,000 for Mulga Tank, 28 April 2025*). The team mobilised to site in early July, with drilling commencing in mid-July.

PHASE 4 RC DRILLING

The Company has planned further RC drilling within the main body of the Mulga Tank Ultramafic Complex, to both test new areas of the Complex, along with some infill holes within the current resource estimate.

The first four RC holes of the Phase 4 program have been drilled, totalling 1,309m. These holes were designed to step-out approximately 300m to the south of previous drilling, with the holes fairly wide spaced at ~400m intervals along the fence - hoping to extend known mineralisation and always searching for higher value tonnes. Defining shallow zones of ~0.40% Ni, for potential "starter pit" areas, is a focus of our exploration strategy.

All four holes encountered broad intervals of visible disseminated sulphide mineralisation, with some occurrences of coarser sulphide (see Table 1 below), successfully extending known mineralisation outside the current Mineral Resource shell.

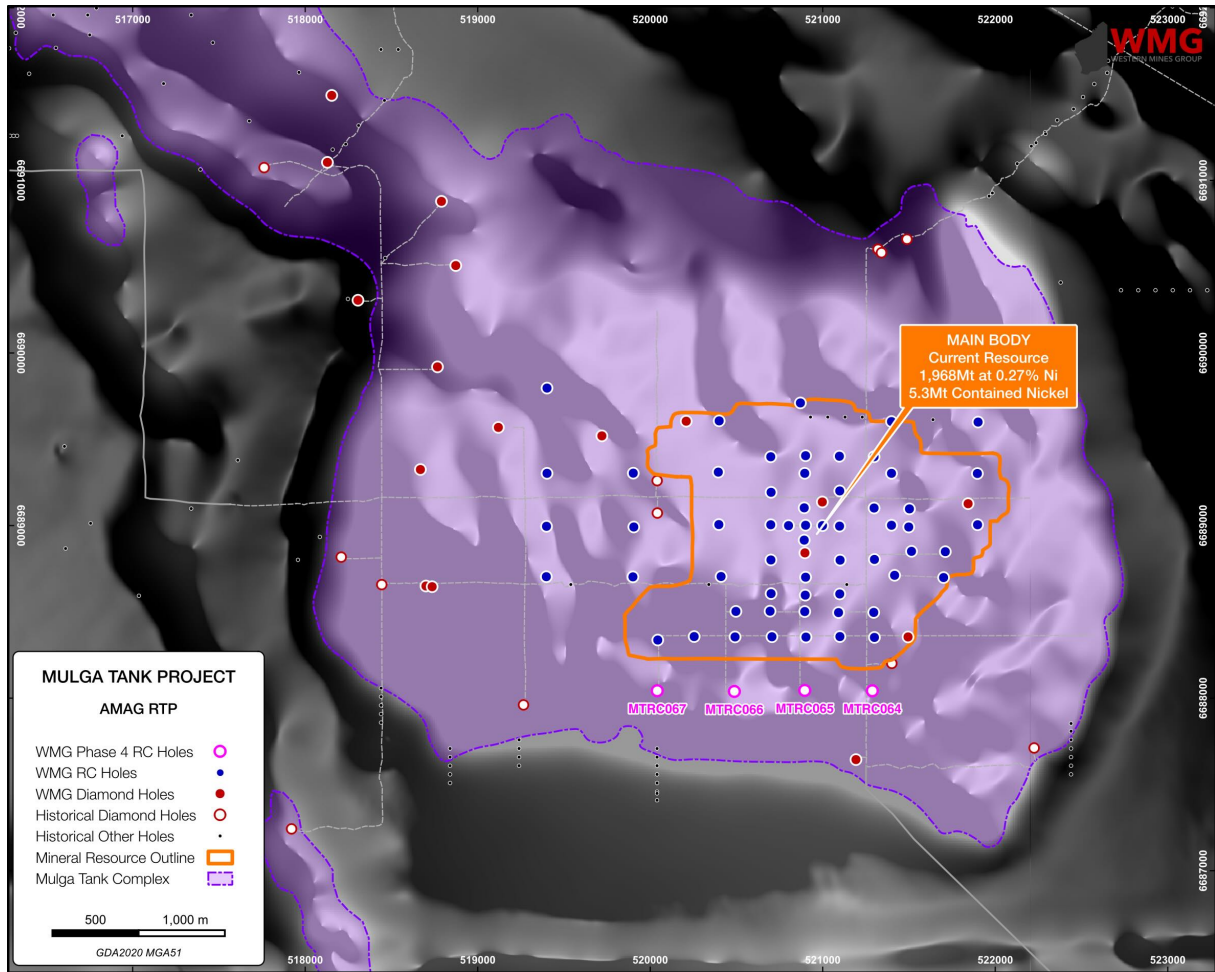


Figure 1: Completed Phase 4 RC Drilling

HoleID	From (m)	To (m)	Interval (m)	Lithology	Sulphide Texture	Sulphide Abundance (%)	Sulphides Observed
MTRC064	105	139	34	Dunite	Disseminated	tr-2%	Pentlandite
	139	140	1	Dunite	Disseminated Veinlet	tr-1% 5-10%	Pentlandite Pentlandite-Pyrrhotite
	140	173	33	Dunite	Disseminated	tr-2%	Pentlandite
	175	176	1	Dunite	Disseminated	1-2%	Pentlandite
	183	187	4	Dunite	Disseminated	1-2%	Pentlandite-Pyrrhotite
	189	190	1	Dunite	Disseminated	1-2%	Pentlandite
	193	198	5	Dunite	Disseminated	tr-2%	Pentlandite
	200	233	33	Dunite	Disseminated	tr-2%	Pentlandite
	238	241	3	Dunite	Disseminated	1-2%	Pentlandite
	248	249	1	Dunite	Disseminated	tr-1%	Pentlandite
	252	254	2	Dunite	Disseminated	tr-1%	Pentlandite
	256	258	2	Dunite	Disseminated	tr-1%	Pentlandite
	276	287	11	Dunite	Disseminated	1-2%	Pentlandite
	290	298	8	Dunite	Disseminated	tr-3%	Pentlandite
	300	302	2	Dunite	Disseminated	tr-1%	Pentlandite
306	317	11	Dunite	Disseminated	tr-2%	Pentlandite-Pyrrhotite	
	82	88	6	Dunite	Disseminated	tr-2%	Pentlandite-Pyrrhotite-Violarite
	91	113	22	Dunite	Disseminated	tr-2%	Pentlandite
	120	135	15	Dunite	Disseminated	tr-1%	Pentlandite
	142	143	1	Dunite	Disseminated	tr-1%	Pentlandite

For personal use only

HoleID	From (m)	To (m)	Interval (m)	Lithology	Sulphide Texture	Sulphide Abundance (%)	Sulphides Observed
MTRC065	239	240	1	Dunite	Disseminated	tr-1%	Pentlandite
	251	252	1	Dunite	Disseminated	tr-1%	Pentlandite
	254	257	3	Dunite	Disseminated	tr-1%	Pentlandite
	263	265	2	Dunite	Disseminated	tr	Pentlandite
	271	308	37	Dunite	Disseminated	tr-1%	Pentlandite
	314	319	5	Dunite	Disseminated	tr	Pentlandite
MTRC066	324	325	1	Dunite	Disseminated	tr	Pentlandite
	91	106	15	Dunite	Disseminated Veinlet	tr-2% 2-5%	Pentlandite Pentlandite-Pyrrhotite
	108	110	2	Dunite	Disseminated	tr	Pentlandite
	125	132	7	Dunite	Disseminated	tr-1%	Pentlandite
	135	144	9	Dunite	Disseminated	tr-1%	Pentlandite
	151	165	14	Dunite	Disseminated	tr-2%	Pentlandite
	168	186	18	Dunite	Disseminated	tr-1%	Pentlandite
	188	200	12	Dunite	Disseminated	tr-2%	Pentlandite
	208	215	7	Dunite	Disseminated	tr-1%	Pentlandite
	221	226	5	Dunite	Disseminated	tr-1%	Pentlandite
	282	285	3	Dunite	Disseminated	tr-1%	Pentlandite
	288	290	2	Dunite	Disseminated	tr-1%	Pentlandite
MTRC067	290	299	9	Dunite	Disseminated	tr	Pentlandite
	306	325	19	Dunite	Disseminated	tr-1%	Pentlandite
	154	157	3	Dunite	Disseminated Veinlet	tr-1% 2-5%	Pentlandite Pentlandite-Pyrrhotite
	158	160	2	Dunite	Disseminated	tr-1%	Pentlandite
	161	164	3	Dunite	Disseminated Veinlet	tr-1% 2-5%	Pentlandite Pentlandite-Pyrrhotite
	166	167	1	Dunite	Disseminated	tr-1%	Pentlandite
	168	169	1	Dunite	Disseminated	tr-1%	Pentlandite
	170	189	19	Dunite	Disseminated	tr-1%	Pentlandite
	192	194	2	Dunite	Disseminated	tr-1%	Pentlandite
	207	226	19	Dunite	Disseminated	tr-1%	Pentlandite-Pryite
231	237	6	Dunite	Disseminated	tr-1%	Pentlandite	
285	306	21	Dunite	Disseminated	tr-1%	Pentlandite	
308	334	26	Dunite	Disseminated	tr-1%	Pentlandite	

Table 1: Visual sulphide table for holes MTRC064 to MTRC067

Cautionary statement on visible sulphides

Whilst previous mineralogical work on a limited number of samples from diamond core holes has confirmed disseminated pentlandite mineralisation similar mineralogical investigation has not yet been performed on these RC holes. Descriptions of visible sulphides should never be considered a proxy or substitute for laboratory analysis. Only subsequent laboratory geochemical assay can be used to determine the widths and grade of mineralisation. WMG will update shareholders when laboratory results become available.

E39/2134 EIS DIAMOND DRILLING

Following the completion of the four RC holes the rig converted to diamond and moved up to the *Panhandle* in tenement E39/2134. The Company was successful in its EIS Deep Drilling application for two diamonds holes to test the ~1.3km long body, interpreted from aeromagnetic imagery (Figure 2) (ASX, *WMG Wins Two EIS Awards Totalling \$440,000 for Mulga Tank, 28 April 2025*).

For personal use only

This feature was confirmed to contain olivine cumulate, with a fertile nickel sulphide environment, from the results of Phase 3 regional RC holes MTRC062 (EIS6) and MTRC063 (EIS7) (ASX, *Regional EIS Drilling Confirms Belt-Scale Mineral System*, 3 October 2024; *Assays and Petrology Confirm Fertile Komatiite System*, 3 December 2024).

Previous RC hole MTRC063 (EIS7) ended within mineralised olivine cumulate. This hole has been extended with a 131.4m diamond tail to test the footwall contact and verify the geometry of the body. The Company has now commenced the first of the EIS diamond holes MTD030 (EIS8) (planned hole EIS9 E39/2134) that will look to record a complete section through body and the stratigraphy of the komatiite system.

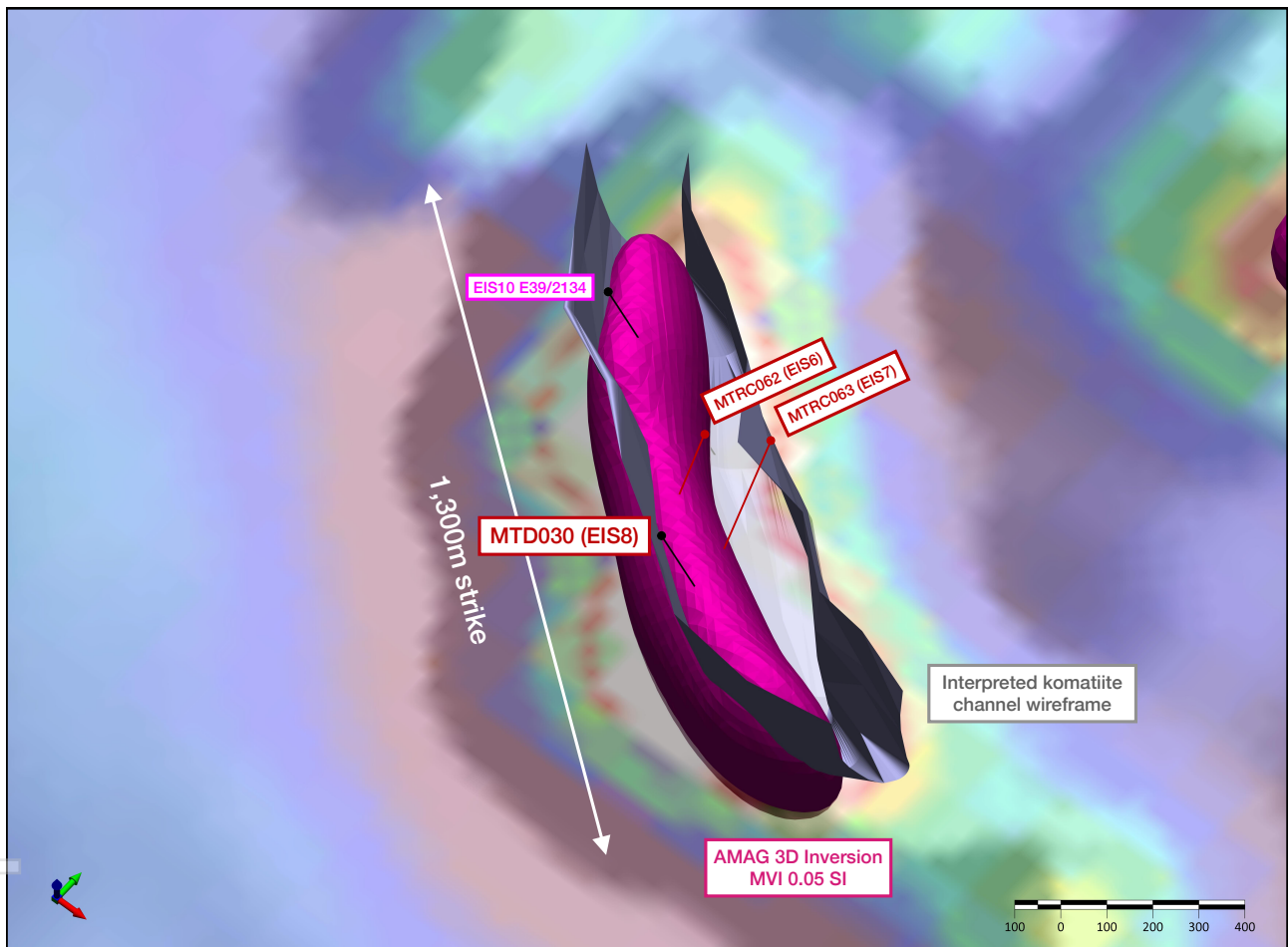


Figure 2: MTD030 (EIS8) and other EIS holes within E39/2134

DHEM SURVEY AND HIGH-GRADE FOLLOW-UP

A multiple hole DHEM survey was successfully undertaken in July, designed to test four holes in central core area of the Mulga Tank Complex that returned high-grade results in the Phase 3 RC program. All planned holes were able to be surveyed to essentially bottom of hole. Results from the DHEM survey identified anomalies associated with the visual sulphide mineralisation observed in each of the holes.

For personal use only

The results from holes MTRC055 and MTRC056 in particular are being further investigated. MTRC055 showed an interesting off-hole anomaly below and to the south of the hole that will be modelled and could be tested with a diamond tail extension and/or diamond twin hole.

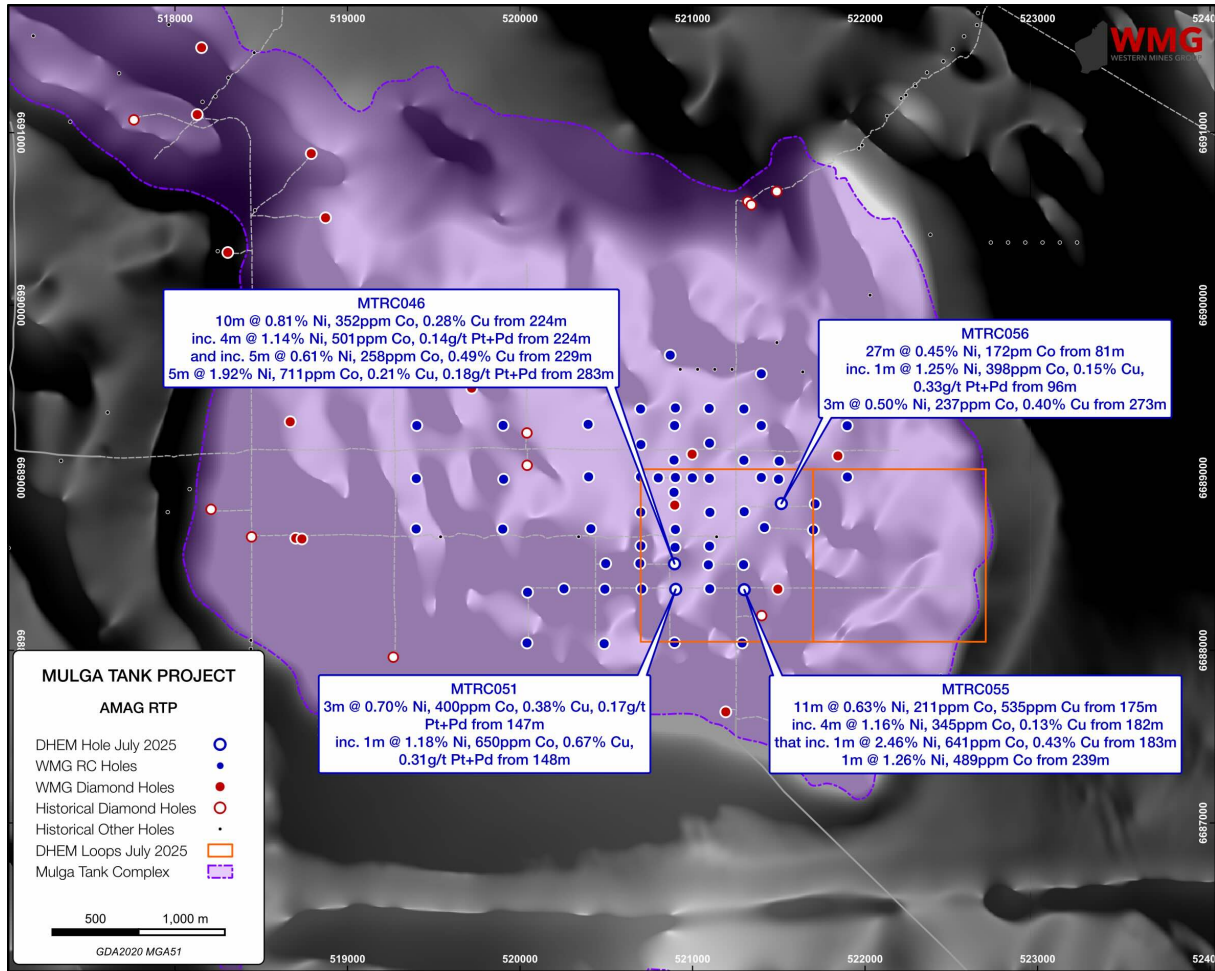


Figure 3: DHEM Survey Plan

HoleID	Hole Depth	Surveyed	Comments
MTRC046	300m	50-274m	Minor inhole/local anomalism defined at 175-185m and 220-230m with stringer-like response associated with visible sulphide mineralisation.
MTRC051	284m	100-275m	Multiple minor inhole/local anomalism defined at 140-155m and 190-210m with stinger-like response associated with visible sulphide mineralisation.
MTRC055	300m	50-290m	Minor inhole/local anomalism defined at 100-120m, 170-190m and 230-250m with stringer like response associated with visible sulphides, broader offend anomaly developing at the lowermost section of the hole in mid to late channels indicating anomaly source beneath and to the south of the hole.
MTRC056	300m	40-288m	Minor inhole/local anomalism defined at 80-100m with stringer-like response associated with visible sulphides, broad anomaly in lower section of hole at 275-288m end of logging, indicating possible source of anomaly beneath the end of hole.

Table 2: DHEM Survey Results

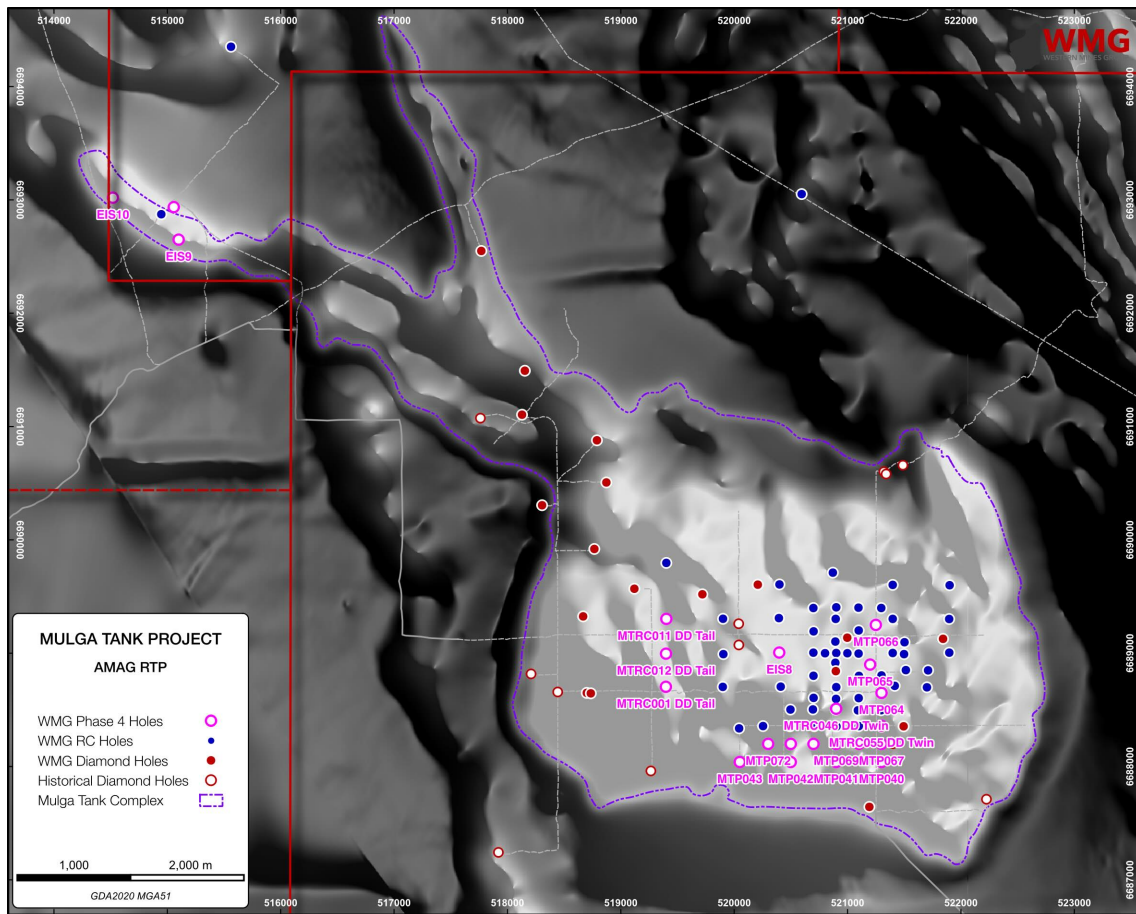


Figure 4: Phase 4 Drilling Plans

The Company looks forward to updating shareholders on these ongoing exploration activities and the continuing progress at Mulga Tank as further results are received.

For further information please contact:

Dr Caedmon Marriott
 Managing Director
 Tel: +61 475 116 798
 Email: contact@westernmines.com.au

This announcement has been authorised for release to the ASX by Dr Caedmon Marriott, Managing Director

Western Mines Group InvestorHub

Investors are encouraged to join the Western Mines Group InvestorHub to receive news and updates, engage directly with the WMG team, and post questions and feedback through the Q&A function accompanying each piece of content.

How to join:

1. Head to our [InvestorHub](#) or scan the QR code with your smart device
2. Follow the prompts to sign up for an InvestorHub account
3. Complete your account profile



For personal use only

APPENDIX

HoleID	Easting (MGA51)	Northing (MGA51)	Total Depth (m)	Azimuth	Dip
MTRC046	520896	6688502	300	270	-70
MTCR051	520903	6688354	300	270	-70
MTRC055	521300	6688352	300	270	-70
MTRC056	521515	6688851	300	270	-70
MTRC063 (EIS7)	515057	6692937	519.4	220	-65
MTRC064	521288	6688043	318	270	-70
MTRC065	520896	6688045	325	270	-70
MTRC066	520488	6688039	330	270	-70
MTRC067	520041	6688043	336	270	-70
MTD030 (EIS8)	515103	6692649	348	45	-65

Table 3: Collar details for holes mentioned in announcement

For personal use only

Western Mines Group Ltd

ACN 640 738 834
 Level 3, 33 Ord Street
 West Perth
 WA 6005

Board

Rex Turkington
Non-Executive Chairman

Dr Caedmon Marriott
Managing Director

Francesco Cannavo
Non-Executive Director

Dr Benjamin Grguric
Technical Director

Capital Structure

Shares: 96.79m
 Options: 9.07m
 Share Price: \$0.23
 Market Cap: \$22.26m
 Cash (30/06/25): \$1.56m

Follow us

 @westernmines
 Western Mines Group

ABOUT WMG

Western Mines Group Ltd (ASX:WMG) is a mineral exploration company driven by the goal to create significant investment returns for our shareholders through exploration and discovery of high-value gold and nickel sulphide deposits across a portfolio of highly-prospective projects located on major mineral belts of Western Australia.

Our flagship project is the Mulga Tank Ni-Co-Cu-PGE Project, a major ultramafic complex found on the under-explored Minigwal Greenstone Belt (100% WMG). WMG's exploration work has discovered a significant nickel sulphide mineral system and is considered highly prospective for globally significant Ni-Co-Cu-PGE deposits. An Mineral Resource Estimate of 1,968Mt at 0.27% Ni, over 5.3Mt of contained nickel, was announced in April 2025, making Mulga Tank the largest nickel sulphide deposit in Australia.

The Company's primary gold project is Jasper Hill, where WMG has strategically consolidated a 3km mineralised gold trend with walk-up drill targets. WMG has a diversified portfolio of other projects including Melita (Au, Cu-Pb-Zn), midway between Kookynie and Leonora in the heart of the WA Goldfields; Youanmi (Au) and Pinyalling (Au, Cu, Li).

COMPETENT PERSONS STATEMENT

The information in this announcement that relates to Exploration Results and other technical information complies with the 2012 Edition of the Australasian Code for Reporting of Exploration Results, Mineral Resources and Ore Reserves (JORC Code) and has been compiled and assessed under the supervision of Dr Caedmon Marriott, Managing Director of Western Mines Group Ltd. Caedmon is a Member of the Australian Institute of Geoscientists and a Member of the Society of Economic Geologists. He has sufficient experience that is relevant to the style of mineralisation and type of deposit under consideration and to the activity being undertaken to qualify as a Competent Person as defined in the 2012 Edition of the JORC Code. Caedmon consents to the inclusion in this announcement of the matters based on his information in the form and context in which it appears.

DISCLAIMER

Some of the statements appearing in this announcement may be in the nature of forward looking statements. You should be aware that such statements are only predictions and are subject to inherent risks and uncertainties. Those risks and uncertainties include factors and risks specific to the industries in which WMG operates and proposes to operate as well as general economic conditions, prevailing exchange rates and interest rates and conditions in the financial markets, among other things. Actual events or results may differ materially from the events or results expressed or implied in any forward looking statement. No forward looking statement is a guarantee or representation as to future performance or any other future matters, which will be influenced by a number of factors and subject to various uncertainties and contingencies, many of which will be outside WMG's control.

WMG does not undertake any obligation to update publicly or release any revisions to these forward looking statements to reflect events or circumstances after today's date or to reflect the occurrence of unanticipated events. No representation or warranty, express or implied, is made as to the fairness, accuracy, completeness or correctness of the information, opinions or conclusions contained in this announcement. To the maximum extent permitted by law, none of WMG, its Directors, employees, advisors or agents, nor any other person, accepts any liability for any loss arising from the use of the information contained in this announcement. You are cautioned not to place undue reliance on any forward looking statement. The forward looking statements in this announcement reflect views held only as at the date of this announcement.

MULGA TANK PROJECT

JORC CODE, 2012 EDITION - TABLE 1 SECTION 1: SAMPLING TECHNIQUES AND DATA

Criteria	JORC Code explanation	Commentary
Sampling techniques	<ul style="list-style-type: none"> Nature and quality of sampling (eg cut channels, random chips, or specific specialised industry standard measurement tools appropriate to the minerals under investigation, such as down hole gamma sondes, or handheld XRF instruments, etc). These examples should not be taken as limiting the broad meaning of sampling. Include reference to measures taken to ensure sample representivity and the appropriate calibration of any measurement tools or systems used. Aspects of the determination of mineralisation that are Material to the Public Report. In cases where 'industry standard' work has been done this would be relatively simple (eg 'reverse circulation drilling was used to obtain 1 m samples from which 3 kg was pulverised to produce a 30 g charge for fire assay'). In other cases more explanation may be required, such as where there is coarse gold that has inherent sampling problems. Unusual commodities or mineralisation types (eg submarine nodules) may warrant disclosure of detailed information. 	<ul style="list-style-type: none"> Reverse circulation (RC) drilling was completed using standard industry best practice Individual 1m samples were collected directly from the rig sampling system. Samples will be crushed and pulverised to produce a sub-sample for analysis by either multi-element ICP-AES (ME-ICP61 and ME-ICP41), precious metals fire assay (Au-AA25 or PGM-ICP23) and loss on ignition at 1,000°C (ME-GRA05) Down-Hole Electromagnetic (DHEM) survey conducted by SGC Niche Acquisition, an independent geophysical contractor DHEM configuration/parameters: Configuration: Down-hole EM (DHEM) Receiver: SMARTem24 Sensor: DigiAtlantis Transmitter: TTX2 Loop Size: 1000m x 1000m (single turn) Current: 80-100A Station Spacing: 2m, 5m, 10m and 20m Base Frequency: 0.5Hz Duty Cycle: 50% Stacks: 64 Readings: 2-3 readings per station DHEM surveys are an industry standard practise in testing the presence of bedrock conductors potentially representing mineralised sulphide bodies
Drilling techniques	<ul style="list-style-type: none"> Drill type (eg core, reverse circulation, open-hole hammer, rotary air blast, auger, Bangka, sonic, etc) and details (eg core diameter, triple or standard tube, depth of diamond tails, face-sampling bit or other type, whether core is oriented and if so, by what method, etc). 	<ul style="list-style-type: none"> Reverse circulation percussion drilling rig with a 5.25inch face sampling bit
Drill sample recovery	<ul style="list-style-type: none"> Method of recording and assessing core and chip sample recoveries and results assessed. Measures taken to maximise sample recovery and ensure representative nature of the samples. Whether a relationship exists between sample recovery and grade and whether sample bias may have occurred due to preferential loss/gain of fine/coarse material. 	<ul style="list-style-type: none"> Standard drilling techniques using "best practice" to maximise sample recovery Information not available to assess relationship between sample recovery and grade

Criteria	JORC Code explanation	Commentary
Logging	<ul style="list-style-type: none"> • Whether core and chip samples have been geologically and geotechnically logged to a level of detail to support appropriate Mineral Resource estimation, mining studies and metallurgical studies. • Whether logging is qualitative or quantitative in nature. Core (or costean, channel, etc) photography. • The total length and percentage of the relevant intersections logged. 	<ul style="list-style-type: none"> • Drill holes geologically logged on a metre basis • Logging is to a level of detail sufficient to support a Mineral Resource estimation, though further information would be required • Logging is qualitative in nature and recorded lithology, mineralogy, mineralisation, weathering, colour, and other features of the samples. Chip trays were photographed in both dry and wet form • Drillhole was logged in full, apart from rock rolled pre-collar intervals
Sub-sampling techniques and sample preparation	<ul style="list-style-type: none"> • If core, whether cut or sawn and whether quarter, half or all core taken. • If non-core, whether riffled, tube sampled, rotary split, etc and whether sampled wet or dry. • For all sample types, the nature, quality and appropriateness of the sample preparation technique. • Quality control procedures adopted for all sub-sampling stages to maximise representivity of samples. • Measures taken to ensure that the sampling is representative of the in-situ material collected, including for instance results for field duplicate/second-half sampling. • Whether sample sizes are appropriate to the grain size of the material being sampled. 	<ul style="list-style-type: none"> • Individual 1m samples were collected directly from the rig sampling system. Samples will be crushed and pulverised to produce a sub-sample for analysis by either multi-element ICP-AES (ME-ICP61 and ME-ICP41), precious metals fire assay (Au-AA25 or PGM-ICP23) and loss on ignition at 1,000°C (ME-GRA05) • Majority of samples were dry however some ground water was encountered and some samples were taken wet • Industry standard sample preparation techniques will be undertaken and considered appropriate for the sample type and material sampled • The sample size is considered appropriate to the grain size of the material being sampled
Quality of assay data and laboratory tests	<ul style="list-style-type: none"> • The nature, quality and appropriateness of the assaying and laboratory procedures used and whether the technique is considered partial or total. • For geophysical tools, spectrometers, handheld XRF instruments, etc, the parameters used in determining the analysis including instrument make and model, reading times, calibrations factors applied and their derivation, etc. • Nature of quality control procedures adopted (eg standards, blanks, duplicates, external laboratory checks) and whether acceptable levels of accuracy (i.e. lack of bias) and precision have been established. 	<ul style="list-style-type: none"> • Samples will be analysed by four-acid digest multi-element ICP-AES (ME-ICP61) or precious metals fire assay (Au-AA25 or PGM-ICP23) are considered total or near total techniques • Standards, blanks and duplicate samples were introduced through-out the sample collection on a 1:20 ratio to ensure quality control • ALS also undertake duplicate analysis and run internal standards as part of their assay regime • DHEM survey undertaken by SGC Niche Acquisition using equipment described above • Production reports reviewed and QA/QC of the data is completed by the Company's consultant geophysicist
Verification of sampling and assaying	<ul style="list-style-type: none"> • The verification of significant intersections by either independent or alternative company personnel. • The use of twinned holes. • Documentation of primary data, data entry procedures, data verification, data storage (physical and electronic) protocols. • Discuss any adjustment to assay data. 	<ul style="list-style-type: none"> • Primary logging data was collected using Ocris logging system on a laptop computer, • All logging was compiled into a SQL database server

For personal use only

Criteria	JORC Code explanation	Commentary
Location of data points	<ul style="list-style-type: none"> Accuracy and quality of surveys used to locate drill holes (collar and down-hole surveys), trenches, mine workings and other locations used in Mineral Resource estimation. Specification of the grid system used. Quality and adequacy of topographic control. 	<ul style="list-style-type: none"> Drill holes located using a handheld GPS with accuracy of +/-3m Downhole surveys were performed at collar and end of hole Coordinates are in UTM Zone 51
Data spacing and distribution	<ul style="list-style-type: none"> Data spacing for reporting of Exploration Results. Whether the data spacing and distribution is sufficient to establish the degree of geological and grade continuity appropriate for the Mineral Resource and Ore Reserve estimation procedure(s) and classifications applied. Whether sample compositing has been applied. 	<ul style="list-style-type: none"> The drilling completed was reconnaissance in nature stepping out from existing known mineralisation Spacing from existing Mineral Resource estimate is likely currently too great to include within the current resource estimate without further infill No sample compositing
Orientation of data in relation to geological structure	<ul style="list-style-type: none"> Whether the orientation of sampling achieves unbiased sampling of possible structures and the extent to which this is known, considering the deposit type. If the relationship between the drilling orientation and the orientation of key mineralised structures is considered to have introduced a sampling bias, this should be assessed and reported if material. 	<ul style="list-style-type: none"> The drilling was planned to be approximately perpendicular to the interpreted stratigraphy and mineralisation
Sample security	<ul style="list-style-type: none"> The measures taken to ensure sample security. 	<ul style="list-style-type: none"> Samples delivered to the laboratory by company personnel All data acquired by SGC Niche Acquisition was reported to the Company's consultant geophysicist
Audits or reviews	<ul style="list-style-type: none"> The results of any audits or reviews of sampling techniques and data. 	<ul style="list-style-type: none"> No audits or reviews of drilling sampling techniques or data by external parties An internal review of sampling techniques and data will be completed DHEM data was independently verified by the Company's consultant geophysicist Russell Mortimer of Southern Geoscience Consultants

SECTION 2: REPORTING OF EXPLORATION RESULTS

Criteria	JORC Code explanation	Commentary
Mineral tenement and land tenure status	<ul style="list-style-type: none"> Type, reference name/number, location and ownership including agreements or material issues with third parties such as joint ventures, partnerships, overriding royalties, native title interests, historical sites, wilderness or national park and environmental settings. The security of the tenure held at the time of reporting along with any known impediments to obtaining a licence to operate in the area. 	<ul style="list-style-type: none"> Tenements E39/2132, E39/2134 and E39/2223, tenement application E39/2299 Held 100% by Western Mines Group Ltd 1% NSR over tenement E39/2134, tenements E39/2132 and E39/2223 are royalty free Native Title held by Upurli Upurli Nguratja and Nyalpa Pirniku No known registered sites of historical interest within the tenement area Goldfields Priority Ecological Community PEC54 borders eastern edge of project area Tenement is in good standing

Criteria	JORC Code explanation	Commentary
Exploration done by other parties	<ul style="list-style-type: none"> Acknowledgment and appraisal of exploration by other parties. 	<ul style="list-style-type: none"> Previous exploration over the Mulga Tank project area by various companies dates back to the 1980s Of these, more detailed exploration was completed by BHP Minerals Pty Ltd (1982–1984), MPI Gold Pty Ltd (1995–1999), North Limited (1999–2000), King Eagle Resources Pty Ltd (2004–2012), and Impact (2013–2018)
Geology	<ul style="list-style-type: none"> Deposit type, geological setting and style of mineralisation. 	<ul style="list-style-type: none"> The geology of the project area is dominated by the irregular shaped Mulga Tank serpentinised metadunite intrusive body measuring ~5km x 5km, hosted within metasediments, mafic to felsic schists and foliated metagranite of the northwest trending Archean Minigwal Greenstone Belt Previous drilling intersected disseminated and narrow zones of massive nickel-copper sulphide mineralisation within the dunite intrusion The intrusion is concealed under variable thicknesses of cover (up to 70 m in places) with the interpretation of the bedrock geology based largely on aeromagnetic data and limited drilling
Drill hole information	<ul style="list-style-type: none"> A summary of all information material to the understanding of the exploration results including a tabulation of the following information for all Material drill holes: <ul style="list-style-type: none"> easting and northing of the drill hole collar elevation or RL (Reduced Level – elevation above sea level in metres) of the drill hole collar dip and azimuth of the hole down hole length and interception depth hole length. If the exclusion of this information is justified on the basis that the information is not Material and this exclusion does not detract from the understanding of the report, the Competent Person should clearly explain why this is the case. 	<ul style="list-style-type: none"> A listing of the drill hole information material to the understanding of the exploration results provided in the body of this announcement The use of any data is recommended for indicative purposes only in terms of potential Ni-Cu-PGE mineralisation and for developing exploration targets
Data aggregation methods	<ul style="list-style-type: none"> In reporting Exploration Results, weighting averaging techniques, maximum and/or minimum grade truncations (eg cutting of high grades) and cut-off grades are usually Material and should be stated. Where aggregate intercepts incorporate short lengths of high grade results and longer lengths of low grade results, the procedure used for such aggregation should be stated and some typical examples of such aggregations should be shown in detail. The assumptions used for any reporting of metal equivalent values should be clearly stated. 	<ul style="list-style-type: none"> No metal equivalent values have been quoted

For personal use only

Criteria	JORC Code explanation	Commentary
Relationship between mineralisation widths and intercept lengths	<ul style="list-style-type: none"> • These relationships are particularly important in the reporting of Exploration Results. • If the geometry of the mineralisation with respect to the drill hole angle is known, its nature should be reported. • If it is not known and only the down hole lengths are reported, there should be a clear statement to this effect (eg 'down hole length, true width not known'). 	<ul style="list-style-type: none"> • The drillhole was oriented to intersect perpendicular to the mineralisation or stratigraphy • The relationship of the downhole length to the true width is not known
Diagrams	<ul style="list-style-type: none"> • Appropriate maps and sections (with scales) and tabulations of intercepts should be included for any significant discovery being reported. These should include, but not be limited to a plan view of drill hole collar locations and appropriate sectional views. 	<ul style="list-style-type: none"> • Appropriate maps, photos and tabulations are presented in the body of the announcement
Balanced reporting	<ul style="list-style-type: none"> • Where comprehensive reporting of all Exploration Results is not practicable, representative reporting of both low and high grades and/or widths should be practiced to avoid misleading reporting of Exploration Results. 	<ul style="list-style-type: none"> • All reporting of DHEM results given in the body of the announcement
Other substantive exploration data	<ul style="list-style-type: none"> • Other exploration data, if meaningful and material, should be reported including (but not limited to): geological observations; geophysical survey results; geochemical survey results; bulk samples – size and method of treatment; metallurgical test results; bulk density, groundwater, geotechnical and rock characteristics; potential deleterious or contaminating substances. 	<ul style="list-style-type: none"> • Not applicable
Further work	<ul style="list-style-type: none"> • The nature and scale of planned further work (eg tests for lateral extensions or depth extensions or large-scale step-out drilling). • Diagrams clearly highlighting the areas of possible extensions, including the main geological interpretations and future drilling areas, provided this information is not commercially sensitive. 	<ul style="list-style-type: none"> • Future exploration planned includes further drill testing of targets identified • Future drilling may include infill drilling to extend Mineral Resource estimate and will depend on interpretation of results

For personal use only