

05 August 2025

Boundiali Gold Project Resource grows ~50% to 2.41Moz, growing Aurum's group resources to 3.28Moz

Aurum Resources Limited (ASX: AUE) (Aurum) is pleased to announce a +50% increase (additional 820koz) in the JORC Mineral Resource Estimate (MRE) for its Boundiali Gold Project in Côte d'Ivoire, West Africa to **2.41Moz of gold**. This brings the company's total group resources to **3.28Moz** including the Napié Project. This achievement underscores the project's potential and represents a milestone for Aurum Resources.

The updated 2025 Boundiali MRE comprises the **BST1, BDT1, BDT2, BDT3, BMT1 & BMT3** deposits. Drilling is ongoing on these deposits, and Aurum has identified other prospects at Boundiali which have yet to be drilled (Figure 4).

Table 1: Updated Boundiali Project JORC Mineral Resource Estimate (figures may not add up due to appropriate rounding)

Area	Class	Oxide			Transition			Fresh			Total		
		Quantity (Mt)	Au (g/t)	Au (MOz)	Quantity (Mt)	Au (g/t)	Au (MOz)	Quantity (Mt)	Au (g/t)	Au (MOz)	Quantity (Mt)	Au (g/t)	Au (MOz)
BST1	Indicated	0.8	1.0	0.03	0.9	1.1	0.03	3.2	0.9	0.09	4.9	0.9	0.15
	Inferred	0.6	0.9	0.02	0.9	0.9	0.03	6.1	0.9	0.17	7.6	0.9	0.21
	Sub Total	1.5	0.9	0.04	1.7	1.0	0.05	9.3	0.9	0.26	12.5	0.9	0.36
BDT1	Indicated	0.6	0.9	0.02	0.5	0.9	0.02	10.8	1.1	0.38	12.0	1.1	0.41
	Inferred	0.2	0.9	0.01	0.2	0.9	0.01	2.2	1.0	0.07	2.6	1.0	0.08
	Sub Total	0.8	0.9	0.02	0.7	0.9	0.02	13.0	1.1	0.45	14.6	1.1	0.49
BDT2	Indicated	0.1	0.9	0.003	0.1	0.8	0.002	1.3	0.7	0.03	1.5	0.8	0.04
	Inferred	0.7	0.8	0.018	1.2	0.7	0.03	17.9	0.7	0.43	19.9	0.7	0.48
	Sub Total	0.8	0.8	0.021	1.3	0.7	0.03	19.3	0.7	0.46	21.4	0.7	0.51
BDT3	Indicated												
	Inferred	0.2	0.9	0.004	0.2	1.0	0.01	3.2	1.2	0.12	3.5	1.2	0.13
	Sub Total	0.2	0.9	0.004	0.2	1.0	0.01	3.2	1.2	0.12	3.5	1.2	0.13
BMT1	Indicated												
	Inferred	0.5	0.8	0.01	0.2	0.8	0.004	8.2	1.2	0.30	8.8	1.1	0.32
	Sub Total	0.5	0.8	0.01	0.2	0.8	0.004	8.2	1.2	0.30	8.8	1.1	0.32
BMT3	Indicated												
	Inferred	0.5	1.7	0.03	0.7	1.7	0.04	14.1	1.2	0.52	15.3	1.2	0.59
	Sub Total	0.5	1.7	0.03	0.7	1.7	0.04	14.1	1.2	0.52	15.3	1.2	0.59
All	Indicated	1.6	0.9	0.05	1.5	1.0	0.05	15.4	1.0	0.50	18.5	1.0	0.60
	Inferred	2.5	1.0	0.08	3.2	1.0	0.10	48.5	1.0	1.49	54.2	1.0	1.81
	Total	4.2	1.0	0.13	4.9	1.0	0.16	67.0	1.0	2.12	76.2	1.0	2.41

As detailed in the accompanying Statement of Mineral Resources by Deposit as at 31 July 2025, for BST1, BDT1, BDT2, BDT3, BMT1 and BMT3 deposits with 0.4 g/t Au cut off above 300m depth, and 1 g/t below 300m depth

All drilling results have been released publicly, no additional holes or samples were included in the MRE.

Highlights

- Total Mineral Resources of **2.41M ounces** at **1.0 g/t Au** using cut-off grades (COG) of 0.4 g/t Au above 300m depth and 1 g/t Au below 300m depth including:
 - **Indicated** Resources totalling **18.5Mt** at **1.0 g/t Au** for **600,000 ounces**
 - **Inferred** Resources totalling **54.2Mt** at **1.0 g/t Au** for **1,810,000 ounces**
- Higher grade Inferred component¹ within the Resource consists of:
 - **400,000 ounces** at **2.0 g/t Au** within **BMT3** (at 1.0 g/t COG)
 - **220,000 ounces** at **1.7 g/t Au** within **BMT1** (at 1.0 g/t COG)
 - **100,000 ounces** at **1.9 g/t Au** within **BDT3** (at 0.7 g/t COG)
- **Ongoing Exploration Success and Future Potential:** Gold mineralisation remains open along strike and at depth across all deposits and prospects at the Boundiali Gold Project. The company's 100,000m drilling program for CY2025 is ongoing, with more assays pending. A second MRE update is planned for late in CY2025.
- **Strategic Project Development:** Aurum has commenced a Pre-Feasibility Study (PFS) for the Boundiali Gold Project, which is expected to be completed by the end of CY2025. This study will provide an evaluation of the project's economics and technical feasibility.
- **Strengthened Financial Position:** Aurum is well-funded with \$46.9M cash and value of Montage shares (unaudited)² for continued exploration success.
- **Combined Group Resource** of **3.28Moz** of gold across Boundiali (**2.41Moz**) and Napié (**0.87Moz**)³ projects. A 30,000m drilling program is underway at the Napié Gold Project to expand the existing 0.87 Moz MRE, with an updated MRE anticipated by year-end.

Aurum's Managing Director Dr. Caigen Wang said: *"We are extremely pleased to announce this increase of more than 50% in the Boundiali JORC Mineral Resource Estimate to 2.41 million ounces of gold. This substantial growth is a direct result of our focused and aggressive drilling campaign and highlights the immense potential of the project."*

*Our team has achieved an **820,000 ounce increase** from seven months of drilling since the maiden MRE in December 2024, which represents a 52% increase. Apart from this significant growth in quantity, this updated MRE realised a 362% increase in the Indicated Resource component from 130,000 ounces in the December 2024 MRE to 600,000 ounces in this updated MRE.*

*We are particularly encouraged by the higher-grade Inferred component within the **BDT3, BMT1, and BMT3** deposits, which collectively offer the potential for around **720,000 ounces** at **1.9 g/t Au** and further underscore the quality of this resource.*

¹ Refer to Table 11

² ASX release dated 23/07/2025 June Quarterly Report

³ "Napie Project Listing Rule 5.6 Disclosure (Amended)" released to the Australian Securities Exchange on 4 February 2025 and available to view on www.asx.com.au.

For personal use only

Delivering this updated MRE has enhanced our confidence in further strong growth at Boundiali, given we have many targets identified which we are yet to drill test.

This milestone is a huge achievement, taking our total group resources to more than 3.28 million ounces. With our 100,000-metre drilling program for 2025 ongoing, we have a clear pathway for further resource expansion, supported by a second Boundiali MRE update planned for late in the year.

Development plans for Boundiali are being advanced through the PFS which is on track for completion by the end of CY2025. This, combined with our strong financial position, demonstrates our commitment to delivering on our objectives of resource expansion and creating significant value for our shareholders.”

Table 2: Updated Boundiali Gold Project Mineral Resource compared to December 2024 Mineral Resource

Class	Percent change		
	Tonnes	Au (g/t)	Ounces
Indicated	↑ 374%	no change	↑ 362%
Inferred	↑ 15%	no change	↑ 25%
Grand Total	↑ 50%	no change	↑ 52%

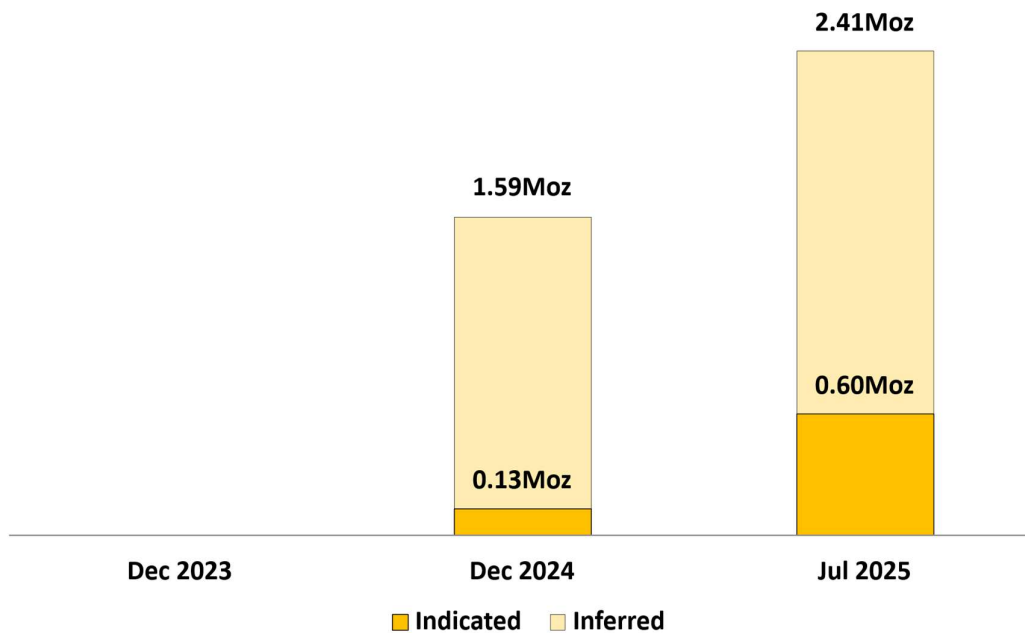


Figure 1: Boundiali Gold Project Mineral Resource timeline (Global and Indicated ounces annotated)

For personal use only

Project Location and Access

The Boundiali Gold Project is in the north of Côte d'Ivoire, and the tenements are located directly to the east of the town of Boundiali. The Project is connected to major regional towns by good quality tarred roads and is about 100km west of Korhogo, which is the major city in the northern part of Côte d'Ivoire. Korhogo is 635km north of Abidjan, the economic capital of Côte d'Ivoire, and is serviced by daily flights from Abidjan. It takes about 90 minutes to reach the Project area by car from the Korhogo airport.

The area is serviced by good infrastructure, including 225kV power lines which cross the Project tenements. The local roads, which would require upgrading to support mining operations, are accessible year-round and suitable to support ongoing exploration teams and associated equipment.

Geography

The Project is situated in the northern region of Côte d'Ivoire. The region is characterised by a relatively flat landscape, typical of West Africa, and experiences a tropical climate with a distinct dry season from November to March and a wet season from April to October. The average annual rainfall is around 1,500mm and the average annual temperature is 22°C.

Regionally, the economy is primarily driven by agriculture, with cotton being the principal cash crop. Other agricultural products include corn, groundnut, millet, manioc, banana, mangoes, yam, and rice. Boundiali serves as a local trade hub for these agricultural products and houses a regional office of the Department of Agriculture and the town has two factories dedicated to cotton processing.

Mining History

There has not been any commercial scale modern mechanised mining on the Project area. The area has instead seen small scale artisanal mining within several areas of the Project which is typically to a depth of 5m to 15m within the currently defined resource areas. Artisanal mining has targeted the higher grade near surface oxide mineralisation. These activities occur in numerous places through the Project area, and they vary significantly from minor surface disturbances to small scale pit and underground workings within the oxide material above the water table. These mining activities are not considered material to the currently defined MRE however depletion to the resources has been made where larger pits were mapped. These workings are not restricted to the reported resource areas which highlights the untested mineralisation potential within the region.

Mineral Rights and Land Tenure

The Boundiali Gold Project is located within the same greenstone belt as Resolute's large Syama (11.5Moz) gold mine and Perseus' Sissingué (1.4 Moz) gold mine to the north and Montage Gold's 4.5Moz Koné project located to the south. Barrick's Tongon mine (5.0Moz) is located to the northeast (Figure 2).

Boundiali Gold Project is comprised of six neighbouring exploration tenements (Figure 3 and Figure 4):

- 1) Boundiali Minex Tenement PR0893 ("**BM**"), 400km², holder Minex West Africa, of which Aurum holds 80% (through its fully owned subsidiary Plusor Global Pty Ltd "Plusor") and can hold interest of between 80-88% in a mining licence.
- 2) Boundiali DS tenement PR808 ("**BD**"), 260km², holder DS Resources Joint Venture Company, of which Aurum is 80% share capital owner through its fully owned subsidiary Plusor.
- 3) Boundiali South tenement ("**BST**") 100%, 167.34km² is located directly south of Aurum's **BD** and **BM** tenement. Application for mining exploitation licence was lodged with the Ministry of Mines, Petroleum and Energy in March 2025.
- 4) Boundiali North tenement PR283 ("**BN**"), 208.87km², under renewal, Aurum to earn up to 70% interest through its wholly owned subsidiary Plusor.
- 5) Two Encore JV Project applications (No. 1740 and No. 1745).

Mineral Resources have been declared on three of the tenements, **BM**, **BD** and **BST** (Table 3).

Table 3: Deposit Reference

Tenement	Deposit
BST	BST1 (BST Target 1)
BD	BDT1 (BD Target 1)
	BDT2 (BD Target 2)
	BDT3 (BD Target 2)
BM	BMT1 (BM Target 1)
	BMT3 (BM Target 3)

For personal use only

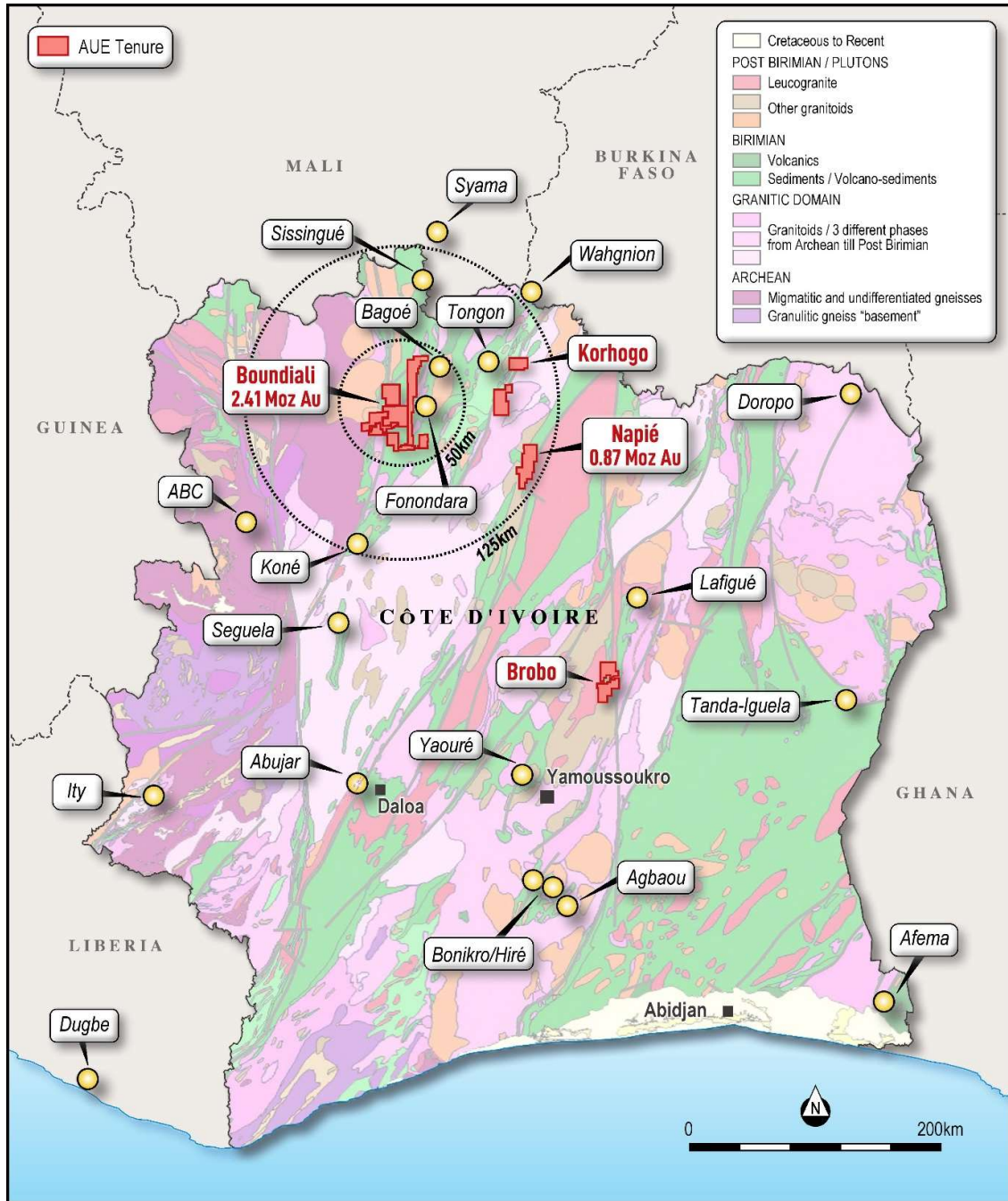


Figure 2: Location of Aurum's Boundiali Gold Project in Côte d'Ivoire

For personal use only

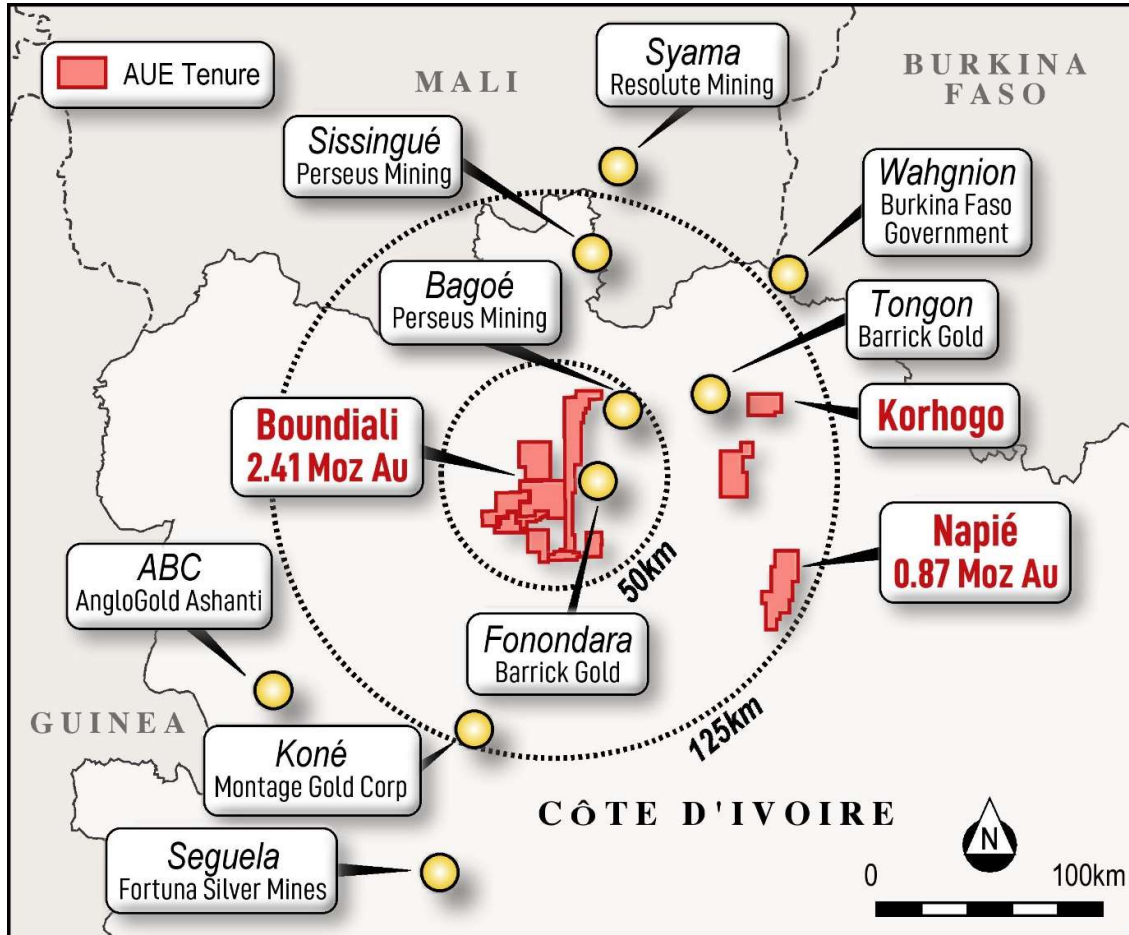


Figure 3: Location of Aurum's Boundiali Gold Project in Côte d'Ivoire

For personal use only

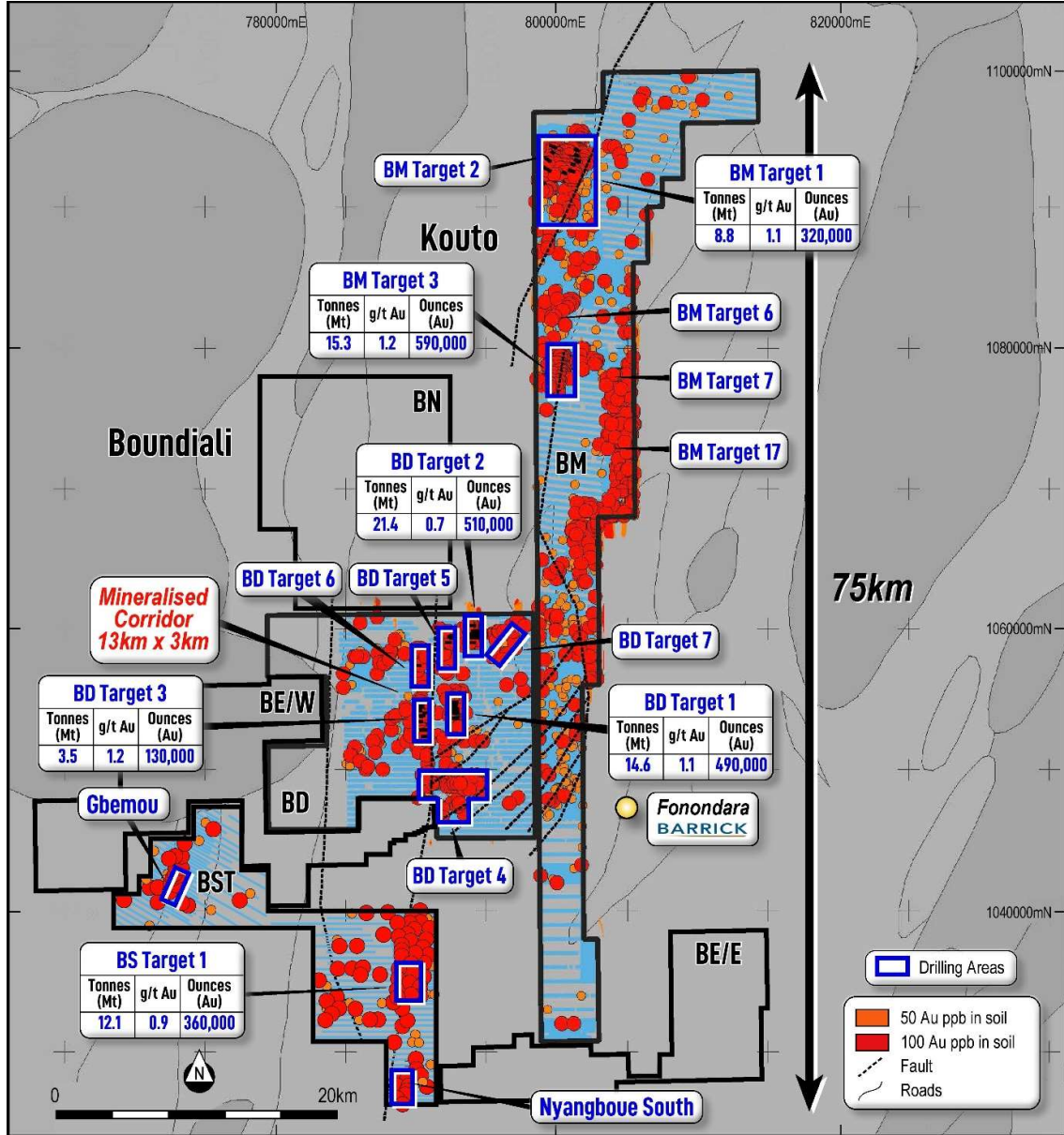


Figure 4: Aurum's Boundiali Gold Project

Regional Geology

The West Africa Craton covers 4.5 million square kilometres across 14 countries (Jessel and Liegeois, 2015). The craton has been stable since 1.9Ga and has been classified among one of the most prospective geological terranes for many commodities such as: gold, lithium, bauxite, iron, and diamonds.

The craton is subdivided by two domains broadly, these domains were formed by the juxtaposition of the Archean and Proterozoic terranes, separated by the Sassandra Fault. Most gold discoveries have been made within the Proterozoic terrane formed during the Eburnean orogenic cycle between 2.15Ga to 1.8Ga (Feybesse et al., 2006).

Generally, different lithologies in the various terranes are encountered:

- Archean Terrane (3.5Ga – 2.8Ga): the host rocks are dominated by TTG's (Tonalite-Trondhjemite-Granodiorite), mafic and ultramafic rocks. Metamorphism varies between the high-grade granulite and amphibolite facies.
- Proterozoic Terrane: The rocks of the Birimian Group cover more than 2/3rds of Côte d'Ivoire (*Lompo 2010; Vidal et al. 2009*). These rocks strike predominantly NNE-SSW and consist of granitoids and volcano-sedimentary greenstone belts. Metamorphism is typically lower grade greenschist facies.

Project Geology

In Côte d'Ivoire, sulphide gold mineralisation is usually associated with greenstone belts which generally form a N-S to NNE-SSW oriented volcano-sedimentary furrow. The Boundiali project belongs to the Bagoué shearzone.

The project is located within the Proterozoic Domain rich in sedimentary rock. There are two different geological units which characterise the Boundiali project:

- Magmatic rock: located in the western and eastern of Boundiali, this unit is rich in magnetic granite associated with the late intrusion of volcanic rock deformed
- Sedimentary rock: according to the size of the grain Boundiali respectively hosts the grauwacke, the sandstone and shale.

The N-S structure is rich in gold, with the same trend correlating to the multiple artisanal mining pits mapped. Some of these artisanal pits were on a massive scale. The geological setting is characterized by the contact between the volcanic and sedimentary rock, the mineralisation is bearing by a large shearing quartz vein rich in pyrite + chalcopyrite + arsenopyrite good alteration such as hematite + carbonate + tourmaline within sedimentary rock.

Gold mineralisation may be spatially related to the emplacement of intrusives. The gold mineralisation is mesothermal in origin and occurs as free gold in quartz vein stockworks and zones of silicification, associated with pyrite and chalcopyrite. The gold mineralisation is found in linear zones with the contacts showing evidence of shearing. Free gold is frequently observed. Alteration is weak to strong depending on the development of the system typically being sericite.

Two types of deformation are present in the drill cores: ductile deformation and brittle deformation. The gold mineralisation is related to deformed sandstone and graywacke, in shear zones, with sulphides (mainly pyrite and minor chalcopyrite) associated with visible gold. Alteration is characterized by chlorite, sericite, calcite, secondary quartz and disseminated pyrite. This assemblage is well developed in schistose, foliated rocks with presence of quartz veins or veinlets.

Exploration Data

Systematic exploration works to date at Boundiali have included geochemical sampling, surface pits and trenches as well as AC, RC/RD and diamond drilling (Table 4). Geophysical survey data is available over **BST** and **BM**. Exploration activity was undertaken on and off since 2016 at **BST** and **BD**, with work ending around 2022 and involved Predictive Discovery, Toro Gold and Turaco Gold.

Since Aurum took over management of the exploration tenements all drilling has been by Aurum's self-owned diamond rigs. These diamond rigs used a conventional wire-line diamond drilling technique to produce HQ- or NTW-size diamond core. HQ-size rods and casing were used at the top the holes to stabilise the collars, however the majority were drilled with NTW-size equipment from surface to the end of the hole. Aurum via its wholly owned subsidiary Plusor began work in October 2023 and has pursued an aggressive diamond drilling program (Figure 5 & Figure 6) using self-owned and operated diamond drill rigs. Aurum has a large exploration team in the field operating day and night with eight six diamond drill rigs and has drilled over 114,718m of diamond drilling at Boundiali since drilling began (October 2023).

Table 4: Boundiali Exploration Drilling, Trench and Pit Data

Deposit	No holes	Type	Metres
BST	545	AC	21,056
	10	RD	1,658
	35	DD	12,868
	247	RC	17,975
BDT1	109	DD	29,386
	34	RC	2,352
	4	TR	759
BDT2	76	DD	16,462
	30	RC	2,057
	6	TR	2,578

For personal use only

Deposit	No holes	Type	Metres
BDT3	49	DD	10,179
	2	PIT	7
	22	RC	1,457
	9	TR	2,334
BMT1	27	AC	1,477
	94	DD	20,884
	87	PIT	817
	1	RC	132
BMT3	107	DD	23,281
	17	PIT	84
Total	1,511		167,802

Type: AC = air core, RC = reverse circulation, RD = reverse circulation with diamond tail, DD = diamond drilling; TR = Trench, PIT = Pitting

For personal use only

For personal use only

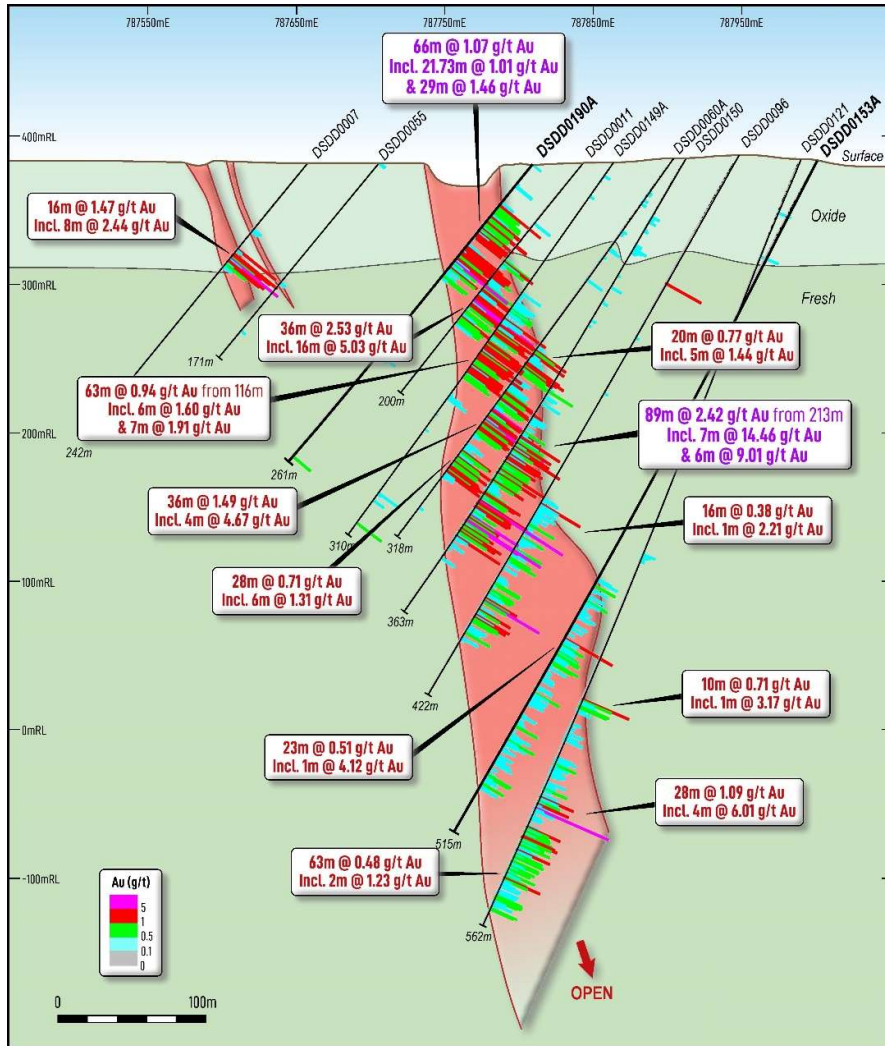


Figure 5: Example cross section BDT1

For personal use only

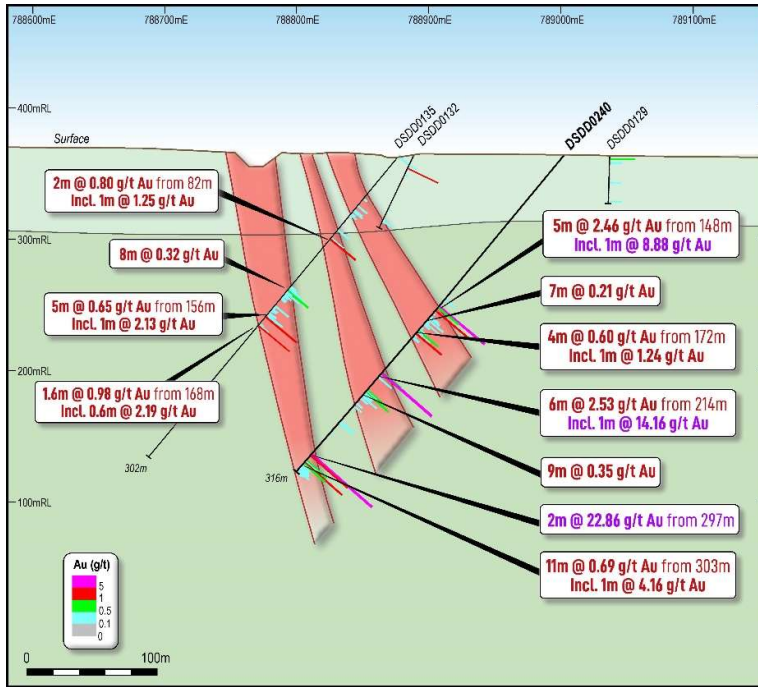


Figure 6: Example cross section BDT2

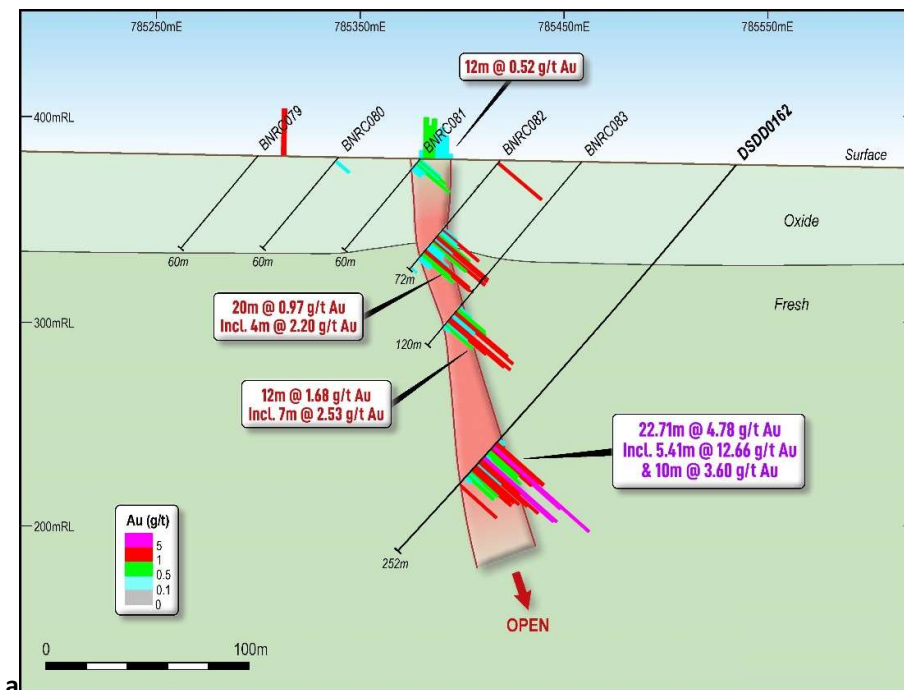


Figure 7: Example cross section BDT3

For personal use only

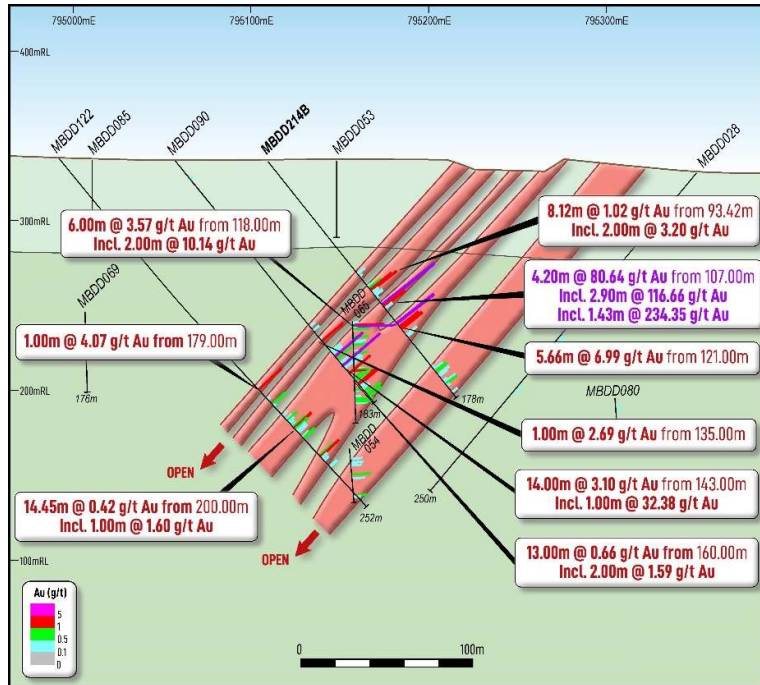


Figure 8: Example cross section BMT3

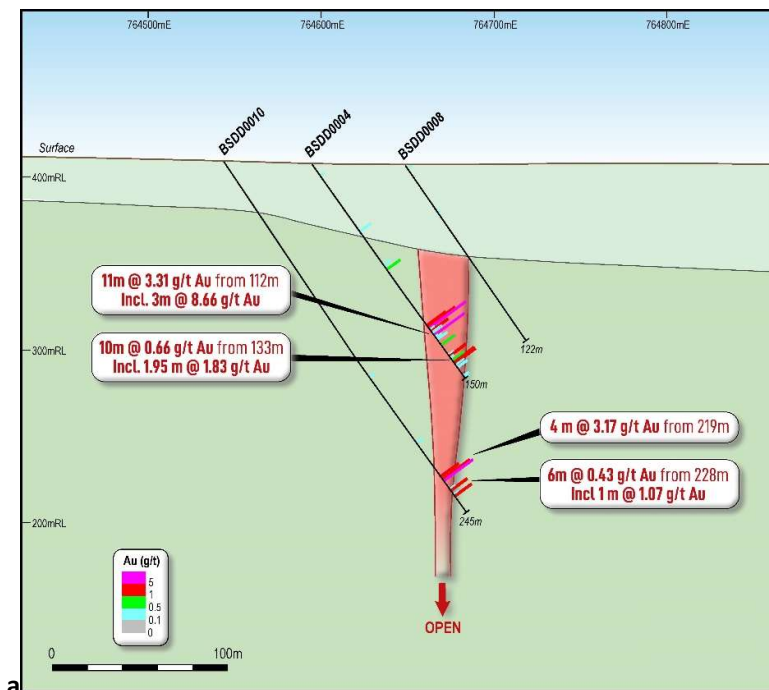


Figure 9: Example cross section BST1

Mineral Resource Data Verification

SLR (RPMGlobal Mining Advisory team is part of SLR's Global Advisory business) conducted a review of the geological and digital data supplied by Aurum. It has determined that no material issues could be identified and considers the data accurate and representative of the underlying samples.

SLR personnel visited the Boundiali Project twice, in October 2024 and May 2025, to review the outcrops, drill-hole location, core sheds as well as held various discussions with site personnel. SLR sighted mineralised drill-hole intersections of all the deposits, down hole surveys and assay data, laboratory facilities, sampling and reviewed survey data acquisition protocols, assay procedures, bulk density determination, logging and sample preparation procedures and quality control (QC) results. SLR concluded that the data was adequately acquired and validated following industry best practices.

Exploration Data

Both reserve circulation (RC) and surface diamond drilling (DD) have been utilised for the Project to date. All drilling at Boundiali during 2015 was RC, with most 2016 drilling completed with RC and some commencing with RC collars changing to DD at depth, subsequently all drilling during 2017 was RC. In 2018, drilling included DD, RC, RC with DD tail and AC and from early 2019, DD and RC drilling was conducted. Since Aurum took over the project in late 2023, all drilling has been conducted using self-owned diamond drills.

Drilling Sample Recovery

Within the diamond drilling, typically core recoveries ranged between 85% and 100% for all holes with no significant issues noted. All 2024 holes have recoveries above 95% in most of the mineralised areas. Some low recoveries are associated with intensely fractured or faulted intervals and the more intensely weathered upper zone however these low recoveries are not considered material to the total Mineral Resource currently estimated.

Drill Hole Collar Locations

All drill hole collar locations were surveyed utilising the differential GPS methods by company and third-party surveyors. The DGPS system utilised is typically within 10cm accuracy range which is suitable for the classification applied. Some early AC, RC holes and trench locations have been derived from handheld GPS however these few data are not considered to have a material impact on the Mineral Resource estimate. Grid system used is WGS 84 / UTM zone 29N

Down Hole Survey

Aurum's drilling teams utilised the Reflex EZ-shot instrument to measure deviations in azimuth and inclination angles for all holes; however, vertical holes were not surveyed. The first measurement is taken at 12 m depth, and then at approximately every 30 to 50m depth interval for the **BST** area, 50 to 100m for **BDT1**, **BDT2**, **BDT3**, **BMT1**, **BMT3** and at the end of the hole.

Drill Hole Logging

The Company has developed logging and sampling procedures based on the experience of the local technical team. These were subsequently reviewed by SLR during the site visits, and it is their opinion that the processes and protocols implemented will provide results with a high level of confidence.

Aurum company geologists log the core according to the existing lithological, alteration and mineralogical nomenclature of the deposit as well as sulphide content. Photography and recovery measurements were carried out by assistants under a geologist's supervision.

Logging records were collected in physical format and were then input into a digital MX Deposit database. Core photographs, collar coordinates, down the hole surveys, logging and sample data were received in digital format.

Sample Methodology

Diamond core was logged both for geological and mineralised structures as noted above. The core was then cut in half using a diamond brick cutting saw on 1m intervals. Typically, the core was sampled to geological intervals as defined by the geologist within even two metre sample intervals utilised. The right-hand side of the core was always submitted for analysis with the left side being stored in trays on site, as confirmed by SLR during the site visit.

Historic RC samples were collected as 1m samples directly from the cyclone which were split using a riffle splitter with $\frac{1}{4}$ of the same retained in the plastic bags, the remainder was re-split with $\frac{1}{4}$ retained in calico bag and the remainder placed in large green plastic bags.

Sample Preparation and Assaying

All resource sample preparation was completed by independent international accredited laboratories, Intertek or MSA. After cutting or splitting, the samples were bagged and numbered by the Client's (Aurum) employees and then sent to either Intertek in Ghana or MSA minerals laboratory in Yamoussoukro.

Aurum employees insert quality control (QAQC) samples on site prior to pick up of the samples from site. The Clients employees then have no further involvement in the preparation or analysis of the samples.

All samples followed a standard path as outlined below:

- Samples as received are initially sorted and verified against the client Sample Submission Form.
- Samples are air dried at 90°C.
- All samples are crushed to 2mm using a jaw crusher and Boyd crusher in a two-stage process.
- Sample split by rotary sample divider to 600-700g, with reject retained.
- Whole sample is pulverised to 90% <75 µm.
- The pulverised sample is mixed and divided manually, with approximately 200g retained for the client and 300 g retained for laboratory analysis.
- Gold by fire assay with atomic adsorption finish 30g or alternatively;

- Gold by Chrysos™ PhotonAssay methodology. This uses a high-energy X-ray source that is used to irradiate large mineral samples, typically about 500g compared to the 50g of the fire assay. The X-rays induce short-lived changes in the structure of any gold nuclei present. As the excited gold nuclei return to their ground state, they emit a characteristic gamma-ray signature, the intensity of which is directly proportional to the concentration of gold. The penetrating nature of Chrysos™ PhotonAssay provides much higher energy than those used in conventional X-ray fluorescence (XRF), which provides a true bulk analysis of the entire sample. Samples are presented into a fully automatic process where samples are irradiated, measured, data collection and reporting.

Quality Assurance and Quality Control

A definitive QAQC program has been implemented to provide verification of the sample procedure, the sample preparation and the analytical precision and accuracy of the primary laboratory, which includes the following:

- Standard Reference Material (SRM) samples: 12 (twelve) types of standards sourced from Geostats Ltd. were inserted 1 in every 20 samples
- Primary DD duplicate: Generated by cutting the remaining half core into a ¼ and sampled
- Coarse blank samples: Inserted 1 in every 20 samples
- Laboratory Internal Duplicates and Standards.

Sample Security

Measures undertaken to ensure sample security included the following:

- Samples for the Mineral Resource estimates have been derived from surface drilling. Company geologists and technicians are responsible for delivering core to the logging yard. The Company's personnel are responsible for cutting the core and placing the cut core in bags for delivery to the preparation laboratory facilities. The geology staff provide the laboratory with a report detailing the amount and numbers of samples and sample tickets to each core is provided. Prior to submission, duplicate and SRM's were included in the batches and documented within the sample runs. Batches are sent to the analytical laboratories with a report detailing the analysis method required for each element. Chain of custody is kept all the time by the Company personnel.
- Following submission, samples are managed and prepared by independent international accredited laboratory personnel.
- All personnel handling samples are supervised by senior site geologists and geotechnicians. In addition, photos are taken of all core trays prior to sampling. Core is clearly labelled for sampling, a suitable paper trail of sampling can be produced, and duplicate samples are taken to ensure no sample handling issues arise. Half core rejects, core rejects and pulps are appropriately stored inside the core shed and are available for further checks.

Mineral Resource Estimate

Mineral Resources are independently reported by SLR in compliance with the recommended guidelines of the JORC Code (2012).

Mineral Resource Classification System under the JORC Code

A “Mineral Resource” is defined in the JORC Code as ‘a concentration or occurrence of solid material of economic interest in or on the Earth’s crust in such form, grade (or quality) that there are reasonable prospects for eventual economic extraction. The location, quantity, grade (or quality), continuity and other geological characteristics of a Mineral Resource are known, estimated or interpreted from specific geological evidence and knowledge, including sampling. Mineral Resources are sub-divided, in order of increasing geological confidence, into Inferred, Indicated and Measured categories.

Mineral Resource estimates are not precise calculations, being dependent on the interpretation of limited information on the location, shape and continuity of the occurrence and on the available sampling results.

For a Mineral Resource to be reported, it must be considered by the Competent Person to meet the following criteria under the recommended guidelines of the JORC Code:

- There are reasonable prospects for eventual economic extraction.
- Data collection methodology and record keeping for geology, assay, bulk density and other sampling information is relevant to the style of mineralisation and quality checks have been carried out to ensure confidence in the data.
- Geological interpretation of the resource and its continuity has been well defined.
- Estimation methodology that is appropriate to the deposit and reflects internal grade variability, sample spacing and selective mining units.
- Classification of the Mineral Resource has considered varying confidence levels and assessment and whether appropriate account has been taken for all relevant factors i.e. relative confidence in tonnage/grade, computations, confidence in continuity of geology and grade, quantity and distribution of the data and the results reflect the view of the Competent Person.

Area of the Resource Estimation

The deposits, which form part of the Mineral Resource estimates, are all located within the Boundiali Gold Project. The Project consists of four exploration licenses under the Ivory Coast mining code currently held by the Companies of which Aurum holds Joint Venture agreements or ownership through subsidiaries. SLR notes that the reported Mineral Resources include the following areas:

- **BST** Mineral Resource area is located on the **BST** tenement and extends over a strike length of 2,350m (from 1,033,800mN – 1,036,150mN), has a typical width of 1,000m (from 784,200mE – 785,200mE). It includes the 400m vertical interval from 100mRL to 500mRL.

- **BDT1** Mineral Resource area located on the **BD** tenement extends over a strike length of 1,400m (from 1,053,800mN – 1,055,200mN), has a typical width of 800m (from 787,400mE – 788,200mE). It includes the 670m vertical interval from -250mRL to 420mRL.
- **BDT2** Mineral Resource area is also located on the **BD** tenement extends over a strike length of 1,800m (from 1,058,800mN – 1,060,600mN), has a typical width of 1,200m (from 788,500mE – 789,700mE). It includes the 550m vertical interval from -100mRL to 450mRL.
- **BDT3** Mineral Resource area is also located on the **BD** tenement extends over a strike length of 2,800m (from 1,052,200mN – 1,055,000mN), has a typical width of 1,000m (from 785,000mE – 786,000mE). It includes the 450m vertical interval from -0mRL to 450mRL.
- **BMT1** Mineral Resource area is located on the **BM** tenement and extends over a strike length of 3,000m (from 1,091,900mN – 1,094,900mN), has a typical width of 2,800m (from 794,300mE – 797,100mE). It includes the 500m vertical interval from -50mRL to 450mRL.
- **BMT3** Mineral Resource area is also located on the **BM** tenement and extends over a strike length of 2,000m (from 1,077,600mN – 1,079,600mN), has a typical width of 1,500m (from 794,500mE – 796,000mE). It includes the 400m vertical interval from 100mRL to 500mRL.

Estimation Parameters and Methodology

Sample Data

A comprehensive dataset was provided to SLR which were utilised within the estimate and resultant classification of the resources. These included RC, RD, AC, DD holes and surface trenches. All drill hole collar, survey, assay and geology records were supplied to SLR in digital format by the site geologists. All Mineral Resource estimation work reported by SLR was based on data received as at 31 July 2025 (Table 5).

Table 5: Summary of Drill Hole Data Supplied to SLR

Deposit	No Holes	Type	Metres
BST	29	AC	1,491
	10	DC	1,658
	23	DD	4,696
	113	RC	10,613
BDT1	90	DD	27,592
	22	RC	1,587
	3	TR	623
BDT2	65	DD	15,099
	26	RC	1,817
	6	TR	2,578
BDT3	34	DD	7,410
	16	RC	1,097
	6	TR	1,666
BMT1	1	AC	50

Deposit	No Holes	Type	Metres
	73	DD	16,927
BMT3	79	DD	18,934
Total	596		113,838

Note: Only drill holes used for geological interpretation and estimation of target areas included in the table.

Bulk Density Data

Bulk density determinations were carried out on the diamond core from holes within the Boundiali Project. No relation can be interpreted between grade and density which is as expected for the style of mineralisation. Average density values were used for the direct assignment for each weathering domains and details are as below table.

Table 6: Summary of Density assignment

Area	Type	Sample number	Mean
BST	BOCO	-	1.50
	TRAN	-	2.40
	FRESH	-	2.80
BDT1	BOCO	994	1.53
	TRAN	259	2.43
	FRESH	5,460	2.75
BDT2	BOCO	82	1.52
	TRAN	100	2.56
	FRESH	2,550	2.76
BDT3	BOCO	130	1.43
	TRAN	44	2.12
	FRESH	523	2.74
BMT1	BOCO	470	1.53
	TRAN	237	2.35
	FRESH	2,103	2.73
BMT3	BOCO	237	1.51
	TRAN	116	2.45
	FRESH	1,067	2.85

Note: For BST area, experimental density values were applied

Depletion Areas

Small scale mining has been undertaken on several areas within the Project. This mining is typically restricted to the upper 10m of the oxide material and above the water table, however, is variable in depth and extent. A detailed topographic survey was used to deplete known mining areas.

For personal use only

Geological Interpretation

Geological units and shear host veins for the deposits, defined by lithological logging and sample assays consisted of generally discrete, mineralised lenses. These were interpreted and wireframed as solids for each area. These lodes appear to coincide with strong linear geological structures which are offset by several offsetting faults and outcrops of mineralisation and host rocks within the Project support the geometry chosen to model the mineralisation.

SLR constructed one set of mineralised wireframes for each deposit using a cut-off grade of 0.2 g/t Au based on interrogation of log histograms and probability plots of the raw assay data. Geological interpretations of the lithological units, the geological structure, alteration and the different lodes of mineralisation were used to guide and interpret the shape of the mineralised wireframes.

All deposits have similar styles of mineralisation which were interpreted as being comprised of north or northeast- striking lodes with striking degrees of approximately 0-15°. Lodes dip at varying angles of inclination and are typically between 60 and 80° for **BST**, **BDT1** & **BDT2** & **BDT3** and **BMT1** & **BMT3**. **BST** dips to the west, **BDT1** & **BDT2** & **BDT3** dip to the east, **BMT1** dips to the SE, and **BMT3** dips NW.

SLR defined a total of 276 discrete bodies for all Deposits (58 bodies for **BST**, 42 bodies for **BDT1**, 46 bodies for **BDT2**, 38 bodies for **BDT3**, 47 bodies for **BMT1** and 45 bodies for **BMT3**) based on the orientation and shape of the mineralisation, which were further domained. These domains are likely separated by interpreted fault zones identified from geophysical surveys and structural readings; the style of mineralisation appears the same between domains, however, there appears to be grade variability typical of these styles of deposits.

No additional high grade domaining was undertaken within the deposit based on statistic reviews however further infill drilling may confirm the presence of high-grade shoots and this will be reviewed at the next update. The current interpretation is considered suitable to support classification of Indicated and Inferred Mineral Resources.

Oxidation logging data which was used to create a base of oxidation surface and the top of fresh rock to further constrain the mineralised domains and allow separation of material types into oxide, transition and fresh.

Drill hole collars were generally spaced on an approximate 100m by 50m grid in all deposits however closer spacing occurs within **BST** and **BDT1** & **BDT2** with drilling closer than 50m by 40m grid.

Preparation of Wireframes

Wireframed solids were constructed based on sectional interpretations of drill hole geological and sample data using SURPAC geological software. The sectional resource outlines were generally extrapolated to a distance half-way between mineralised and un-mineralised holes/sections with a maximum distance of half the along strike distance. In the up-dip and down-dip directions where no

For personal use only

un-mineralised holes were available to constrain the mineralisation, extrapolation was also around half the along strike distance where geological continuity could be observed along strike.

The interpreted outlines were manually triangulated to form the wireframes. To form the ends of the wireframes, the end section strings were copied to a position mid-way to the next section (up to a maximum of 50m this being based on variogram analysis, drill spacing and the judgement of the Competent Person) and adjusted to match the overall interpretation and trend of the mineralisation. The wireframed objects were validated using SURPAC software and set as solids.

The resultant mineralised wireframes were used as hard boundaries to constrain the grade interpolation within the deposit. All un-sampled intervals were assumed to have no mineralisation, and they were therefore set to zero grade, however these were minimal.

Sample and Generational Support

SLR completed a sample support analysis of the two sample types, RC and DD. As these are different sampling methods and importantly have different sampling volumes, there is the potential to introduce inherent sample bias. A statistical review of the assay results from the two sampling methods indicates that there is a no potential bias when comparing close pairs of each dataset, as such no changes the data was required.

Composites

The sets of mineralised wireframes (“objects”) were used to code the assay database to allow identification of the resource intersections. A review of the sample lengths was subsequently completed to determine the optimal composite length. The most prevalent sample length inside the mineralised wireframes was 1m, and as a result, was chosen as the composite length. The samples inside the mineralised wireframes were then composited to 1m lengths and SURPAC software was used to extract the composites. Separate composite files were generated for each resource object. The composites were checked visually in SURPAC software for spatial correlation with the wireframed mineralised objects.

Statistical Analysis

The composites were imported into statistical software to analyse the statistics of the assays within the mineralised wireframes. The summary statistics for major lodes are shown in Table 7. Log histograms and log probability plots for the drilling composites are shown in Figure 10.

The composite samples show a moderate positively skewed log-normal distribution which is typical for the style of mineralisation observed within the deposits (Figure 10 to Figure 15 inclusive).

Table 7: Basic Composite Statistics for the Deposits

Deposit	BST (all)	BDT1(all)	BDT2(all)	BDT3(all)	BMT1(all)	BMT3(all)
Number	5,282	7,171	4,137	1,320	1,187	2,473
Minimum	0	0.001	0	0	0.01	0.01
Maximum	192.5	181.204	45.85	100	49.4	234.35
Mean	0.81	0.728	0.54	0.72	0.92	1.07
Std Dev	3.62	3.918	1.55	3.79	2.72	6.89
Coeff Var	4.5	5.385	2.87	5.27	2.96	6.43
Variance	13.11	15.349	2.39	14.36	7.41	47.49
Skewness	31.58	26.876	14.2	18.07	11.85	22.44
Percentiles						
10%	0.02	0.02	0.02	0.03	0.03	0.01
20%	0.04	0.068	0.06	0.06	0.09	0.02
30%	0.08	0.11	0.11	0.11	0.17	0.07
40%	0.14	0.158	0.16	0.14	0.25	0.13
50%	0.22	0.225	0.22	0.18	0.33	0.2
60%	0.3	0.326	0.3	0.24	0.47	0.29
70%	0.44	0.49	0.39	0.36	0.66	0.49
80%	0.72	0.75	0.58	0.59	0.99	0.82
90%	1.51	1.3	1.03	1.13	2.03	1.84
95%	3.02	2.047	1.77	2.01	3.42	3.05
97.50%	5.4	3.38	3.14	3.53	5.07	5.05
99%	10.34	6.67	6.77	7.72	7.28	11.28

For personal use only

Treatment of High Grades during Estimation

The statistical analysis of the composited samples for Au inside the mineralised wireframes was used to determine the high-grade cuts that were applied to the grades in the mineralised objects before they were used for grade interpolation. All assays above the cut value were assigned the cut value. This was done to eliminate any high-grade outliers in the assay populations which would result in conditional bias within the resource estimate. The high-grade cuts applied to the composites were determined from the log histograms and log probability plots for each deposit resulting in the following conclusions:

- Top-cuts were reviewed and applied, if necessary, these high-grade cuts were applied to the composites and were determined from the log histograms and log probability plots.
- A grade dependent search of 25m radius was applied to all samples above 30 g/t Au used for all Mineral Resources. This was limited to a 25m radius influence of 10 samples due to the extreme grades of these holes.

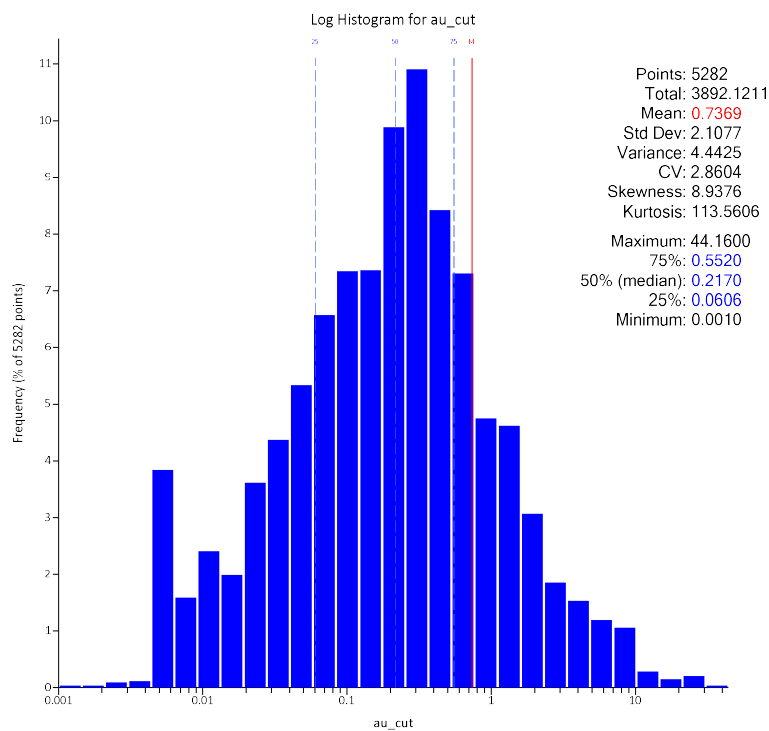


Figure 10: Log histogram for BST composites

For personal use only

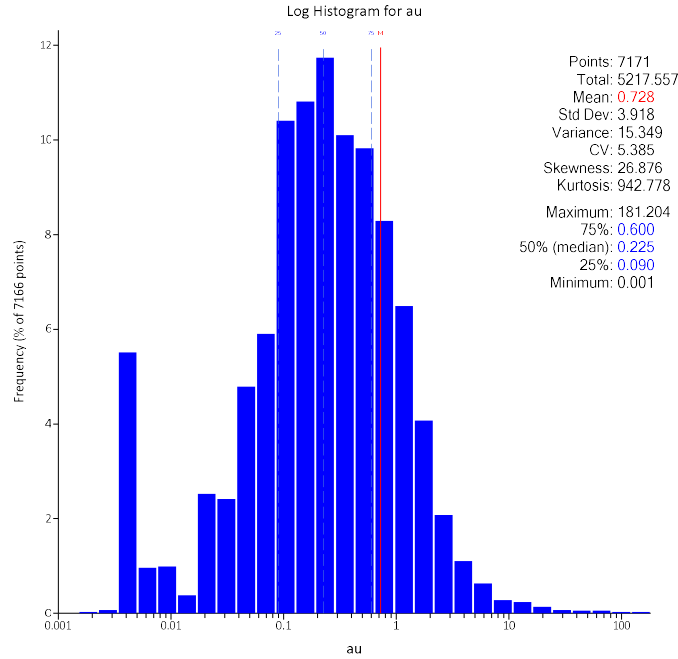


Figure 11: Log histogram for BDT1 composites

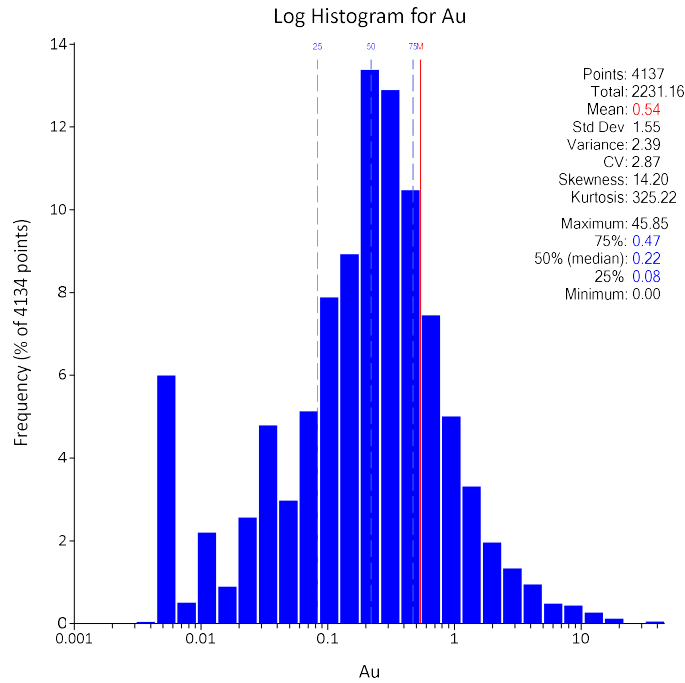


Figure 12: Log histogram for BDT2 composites

For personal use only

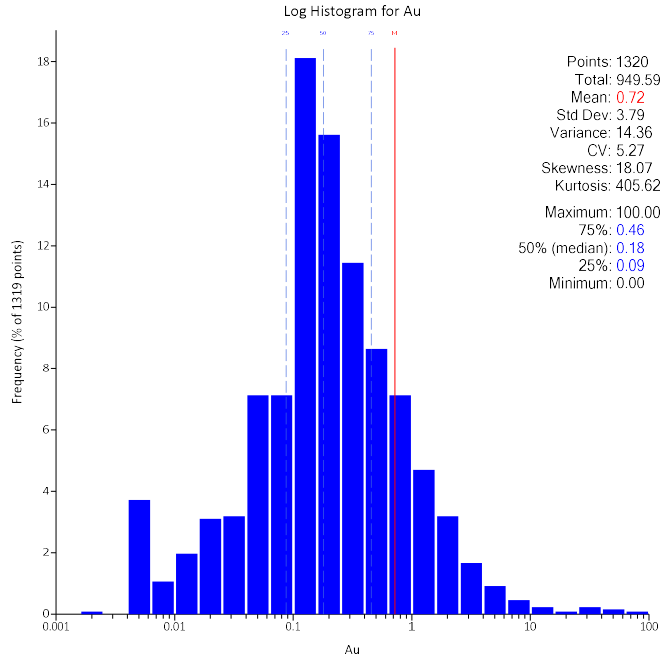


Figure 13: Log histogram for BDT3 composites

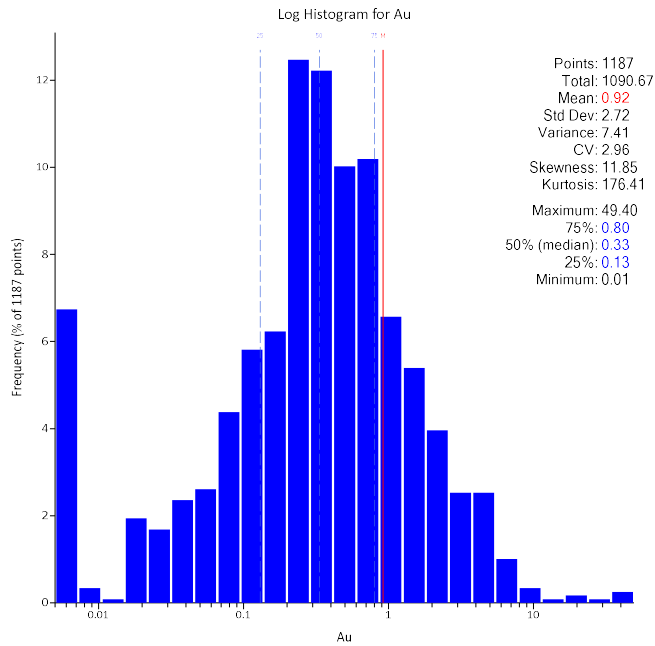


Figure 14: Log histogram for BMT1 composites

For personal use only

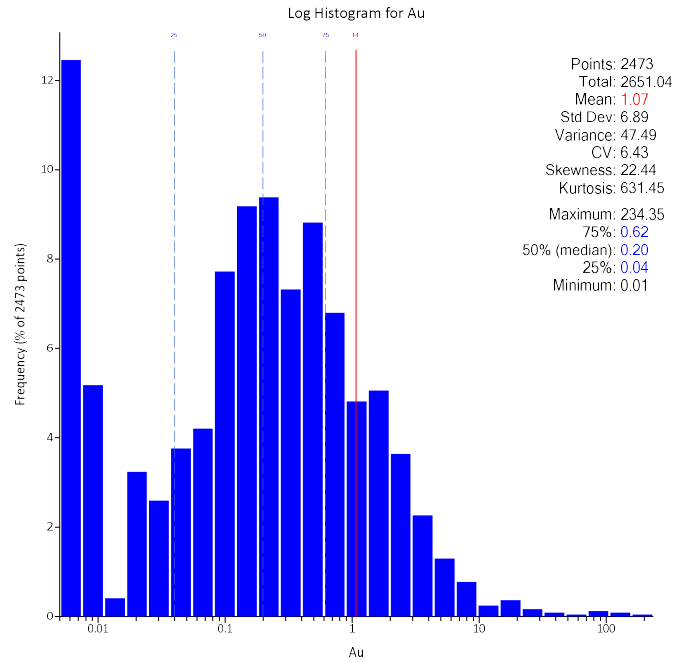


Figure 15: Log histogram for BMT3 composites

Geospatial Analysis

The four largest objects were selected for variogram analysis for **BST** (Figure 16), the three largest mineralisation objects were selected for variogram analysis for **BDT1**, **BDT2** and **BDT3** areas, and the two largest objects were selected for variogram analysis for **BMT1** and **BMT3**. This analysis confirmed that the deposits have similar styles of mineralisation which were interpreted as being comprised of north or northeast- striking lodes with striking degrees of approximately 0-15°. Lodes dip at varying angles of inclination and are typically between 60 and 80° for **BST**, **BDT1** & **BDT2** & **BDT3**, and **BMT1** & **BMT3**. **BST** dips to the west, **BDT1** & **BDT2** & **BDT3** dip to the east, **BMT1** dips to the SE, and **BMT3** dips NW.

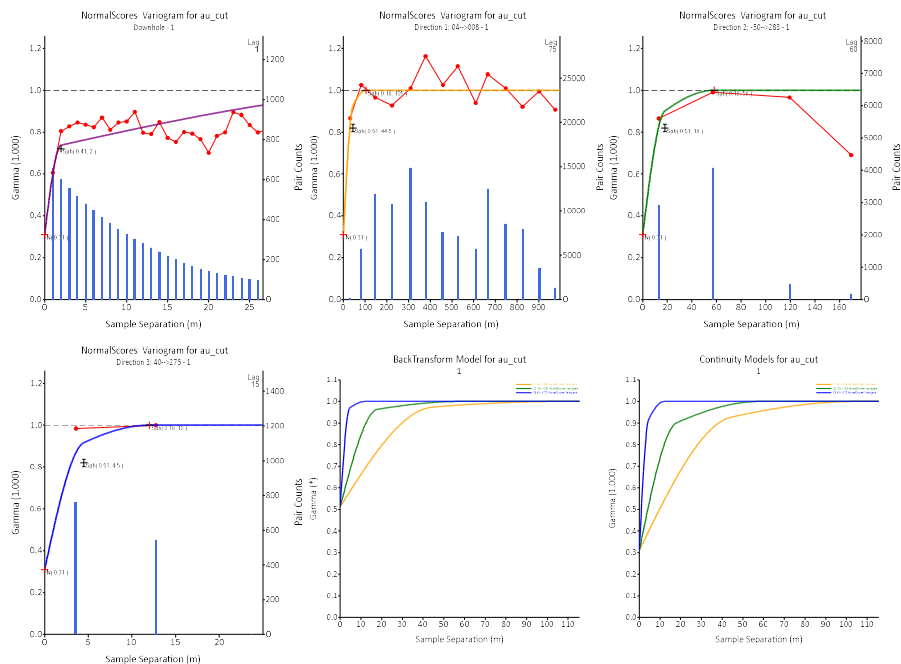


Figure 16: Experimental Variograms and fitted models BST Object 1

For personal use only

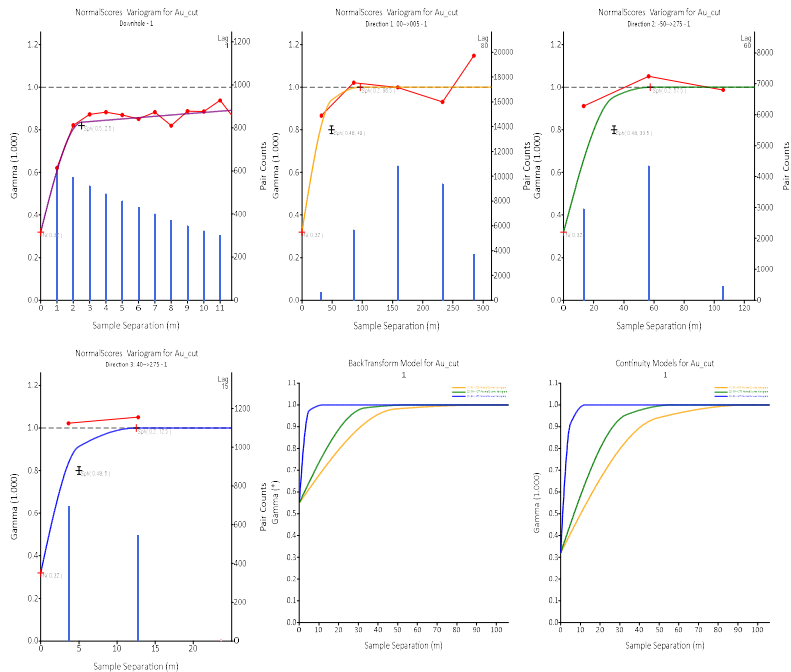


Figure 17: Experimental Variograms and fitted models BDT1 Object 1

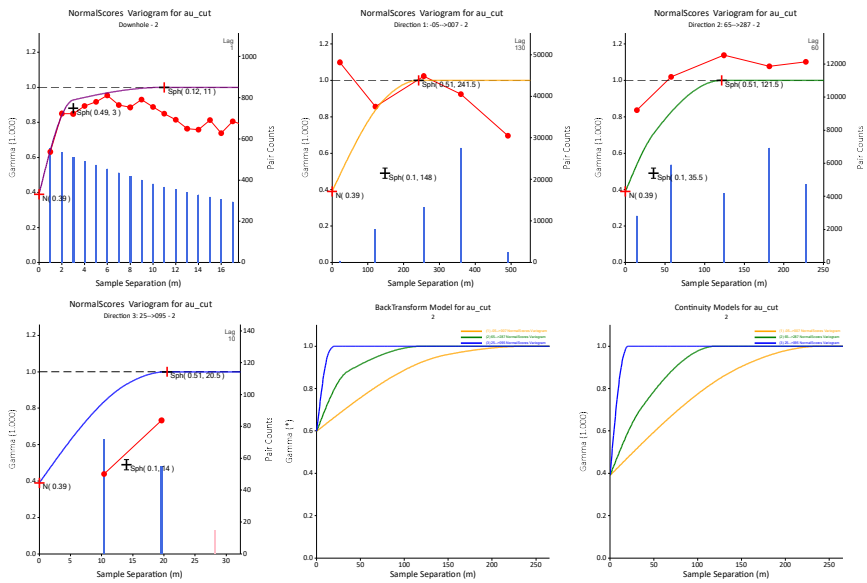


Figure 18: Experimental Variograms and fitted models BDT2 Object 2

For personal use only

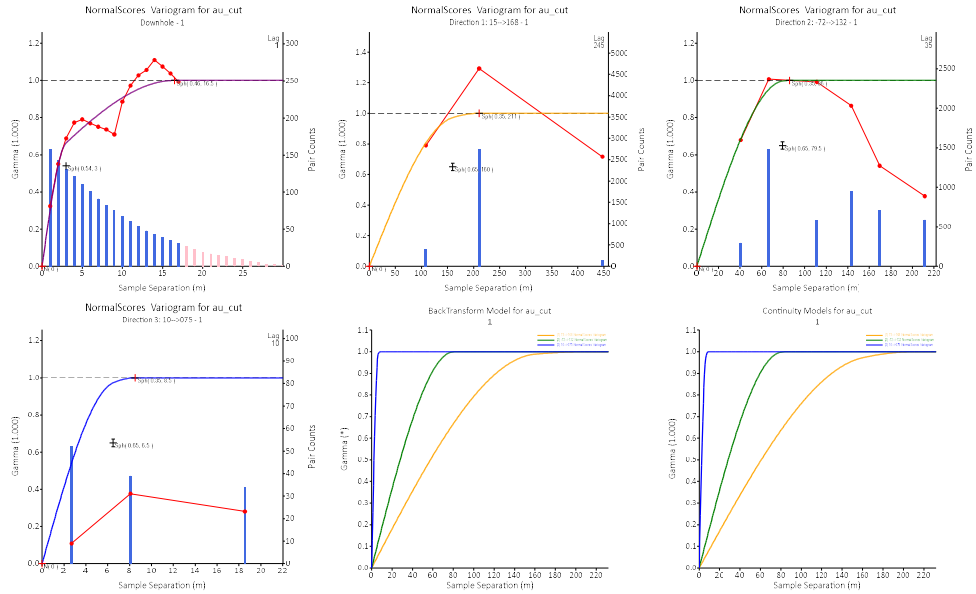


Figure 19: Experimental Variograms and fitted models BDT3 Object 1

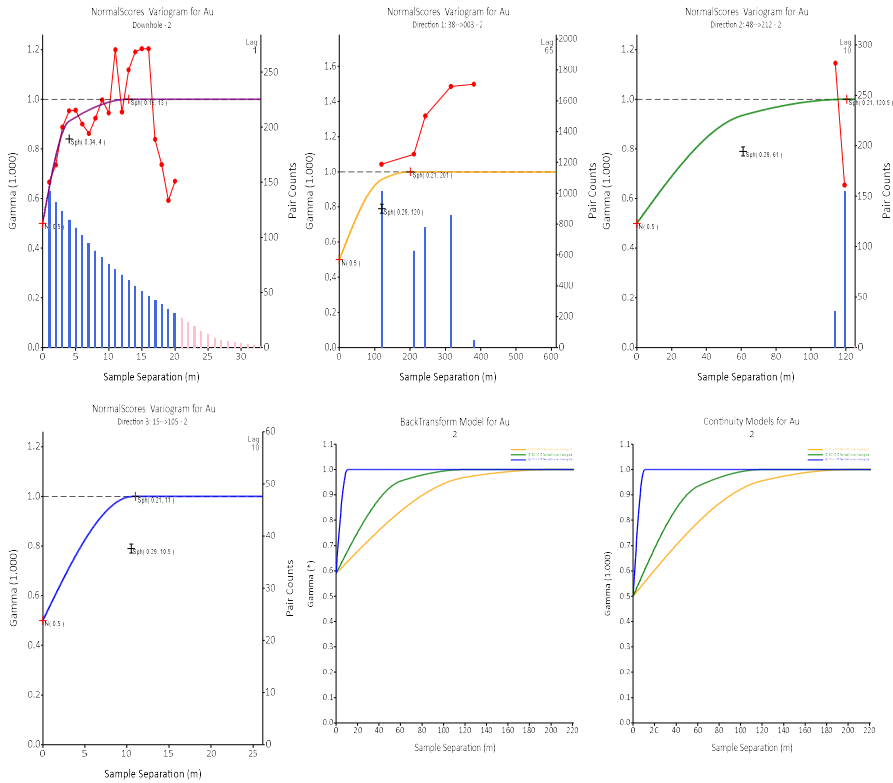


Figure 20: Experimental Variograms and fitted models BMT1 Object 2

For personal use only

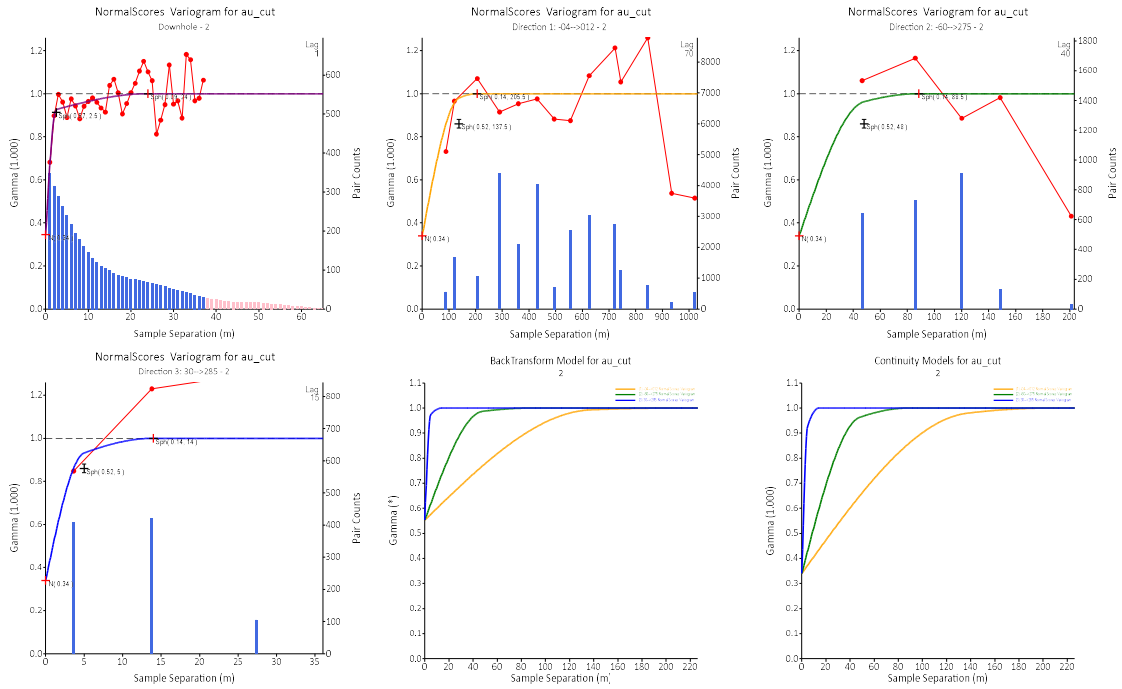


Figure 21: Experimental Variograms and fitted models BMT3 Object 2

Mineral Resource Estimation

Block Model

SURPAC block models were created to encompass the full extent of each resource area within the tenements making up the Boundiali Gold Project. The block models were created orthogonal to the grid and the block dimensions used in the model were 10m NS (along strike) by 10m EW (across strike) by 5m vertical, with sub-cells of 2.5m by 2.5m by 1.25m based on QKNA and the drill spacing. The block model dimensions are shown in Table 8.

Table 8: Block Model parameters

Estimate Area	Origin			Extent			Rotation
	Easting (m)	Northing (m)	Elevation (m)	Easting (m)	Northing (m)	Elevation (m)	Degrees
BST	784,200	1,033,800	100	1,000	2,350	400	0
BDT1	787,400	1,053,800	-250	800	1,400	670	0
BDT2	788,500	1,058,800	-100	1,200	1,800	550	0
BDT3	785,000	1,052,200	0	1,000	2,800	450	0
BMT1	794,300	1,091,900	-50	2,800	3,000	500	0
BMT3	794,500	1,077,600	100	1,500	2,000	400	0

Grade Interpolation and Estimation Parameters

Each mineralised wireframed object was used as a hard boundary for the interpolation of gold (Au). That is, only composites inside each object were used to interpolate the blocks inside the same object. The Ordinary Kriging (OK) algorithm was selected for grade interpolation of gold. The OK algorithm was selected to minimise smoothing within the estimate and to give a more reliable weighting of clustered samples.

An isotropic search ellipsoid in the major and semi-major directions was used for the interpolation process based on the number of samples to be used to estimate a block and the relative orientations of the mineralisation, however an anisotropic parameter was used in the minor direction (across strike).

The search ellipsoid orientations used for interpolation matched the general orientation of the mineralised lodes in each domain, with separate parameters used for the north, middle and south. Three passes were used for the estimation including a final pass with a large search ellipsoid and a minimum sample of one to ensure that all blocks were estimated within the block model, as shown in Table 9.

For personal use only

Table 9: Estimation Parameters

Parameter	Estimation Pass		
	Pass 1	Pass 2	Pass 3
Search Type	Ellipsoid		
Bearing	0° for BST1, BDT1 & BDT2 & BDT3 , and 18° for BMT1 & BMT3		
Dip	60° for BST , -75° for BDT1 , -65° for BDT2 , -80° for BDT3 , -65° for BMT1 , and 70° for BMT3		
Plunge	0	0	0
Major-Semi Major Ratio	1	1	1
Major-Minor Ratio	2	2	2
Search Radius (m)	25	50	100/200
Minimum Samples	4	4	1
Maximum Samples	12	12	12
Max. Samples per Hole	3	3	3
Block Discretisation	5 X by 5 Y by 2 Z		

Model Validation

A rigorous process was used to validate the estimation for the Project as outlined below:

- Mathematical Comparison by Domain;
- Visual Inspection of the Blocks; and
- Overall Validation.

A three-step process was used to validate the model. A qualitative assessment was completed by slicing sections through the block model in positions coincident with drilling. A quantitative assessment of the estimate was completed by comparing the average Au grades of the composite file input against the Au block model output for all the resource objects. Validation of the model included detailed comparison of composite grades and block grades by northing and elevation. Validation plots showed good correlation between the composite grades and the block model grades.

While some smoothing is noted within the grade estimates, SLR considers this appropriate for the style of mineralisation which displays a relatively high nugget, with good geology continuity displayed. The validation indicated that the NN estimate showed reasonable variation on a global scale however this is considered not representative of the local variability with both the IDW and OK displaying smoothing which is considered appropriate and suitable. As such SLR considers that further drilling and closer drilling spacing will be required should a higher level of classification be required.

As a result of the completed validation, SLR considers the estimate is representative of the composites and is indicative of the known controls of mineralisation and the underlying data.

For personal use only

Mineral Resource Classification

Mineral Resources were classified in accordance with the Australasian Code for the Reporting of Exploration Results, Mineral Resources and Ore Reserves (JORC, 2012). The Mineral Resource was classified as Indicated and Inferred Mineral Resource based on data quality, sample spacing, and lode continuity.

All the deposits show good continuity of the main mineralised lodes along strike and down dip which allowed the drill hole intersections to be modelled into coherent, geologically robust wireframes within the drill spacing of 50m-100m by 100m with closer spacing of 50m by 50m or less within the core of the **BST1**, **BDT1** and part of the **BDT2** deposit. Relative consistency is evident in the thickness of the structures, along with the continuity of structure between sections. While there is good geological continuity along strike and down dip, there is evidence, and it is interpreted, that local variation of grade and thickness will occur between the current drill spacing arising from the boudin type structures resulting in discontinuous pods of mineralisation.

Given the interpretation of further local grade variation with further drilling, within the good geological continuity, SLR considers the current data suitable to provide a good estimate of tonnage and metal content within the current drilling spacing on a global scale.

SLR considers the drill spacing at Boundiali to be appropriate for different Resource classification based on the following criteria:

- **Indicated Classification:** Drill spacing of 50m by 50m or less is considered suitable for an Indicated classification in well informed areas of **BST1**, **BDT1**, and **BDT2**. This spacing provides good confidence in geological continuity and grade. This decision is supported by variogram ranges (specifically, 60% of the sill range) and visual confirmation of both structure and grade continuity. Several areas with even closer spacing (<25m) further support the consistency of the geology.
- **Inferred Classification:** For all other areas where drill spacing is greater than 50m by 50m (and up to 100m by 100m), this drill density is considered suitable for an Inferred classification.

Following active review and professional judgment, the Competent Person identified areas within the resource model as unclassified because they did not meet the standards for an Inferred classification. These zones, having been assigned a grade estimate, provide a guide for future drilling aimed at potentially upgrading them to Inferred Resources.

To achieve a Measured resource classification, a higher drill density is required. SLR believes that additional drilling is needed to provide enough confidence in the local grade and metal distribution to meet the criteria for this classification.

Example plan views and example cross sections showing the informing drilling and resource classification are presented in Figure 22 through to Figure 31.

For personal use only

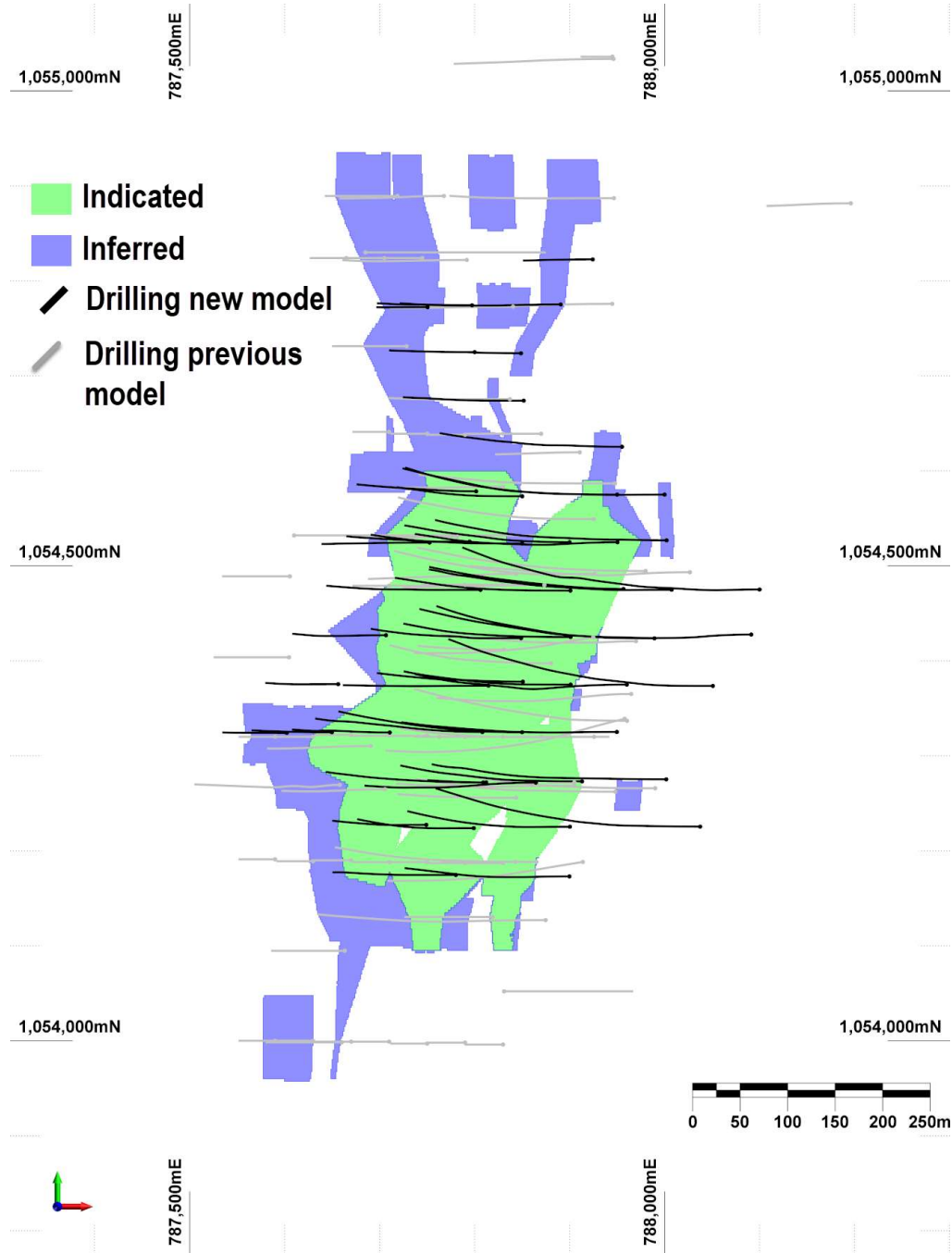


Figure 22: Plan view of BDT1 showing model classification (projected to surface and informing drilling)

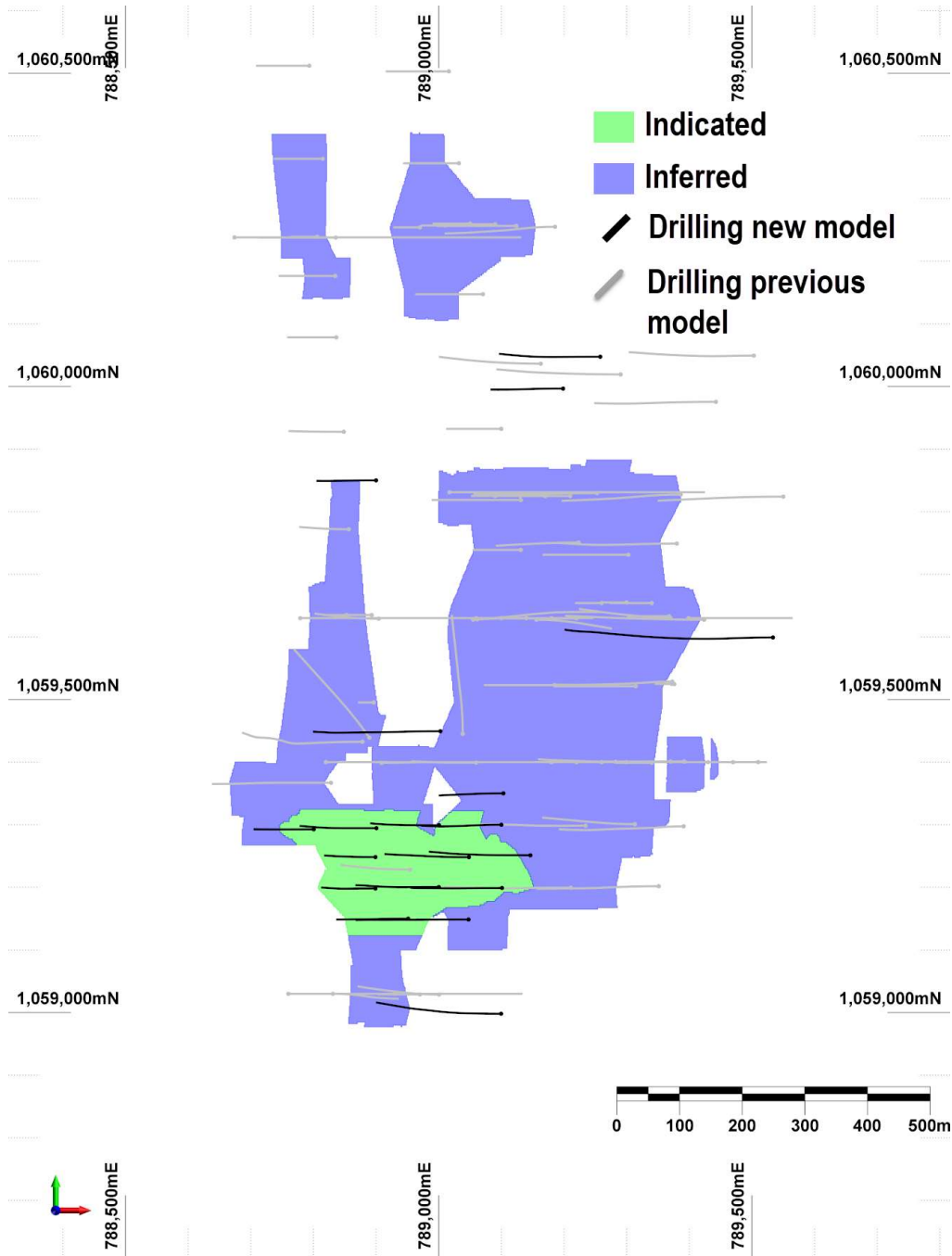


Figure 23: Plan view of BDT2 showing model classification (projected to surface and informing drilling)

For personal use only

For personal use only

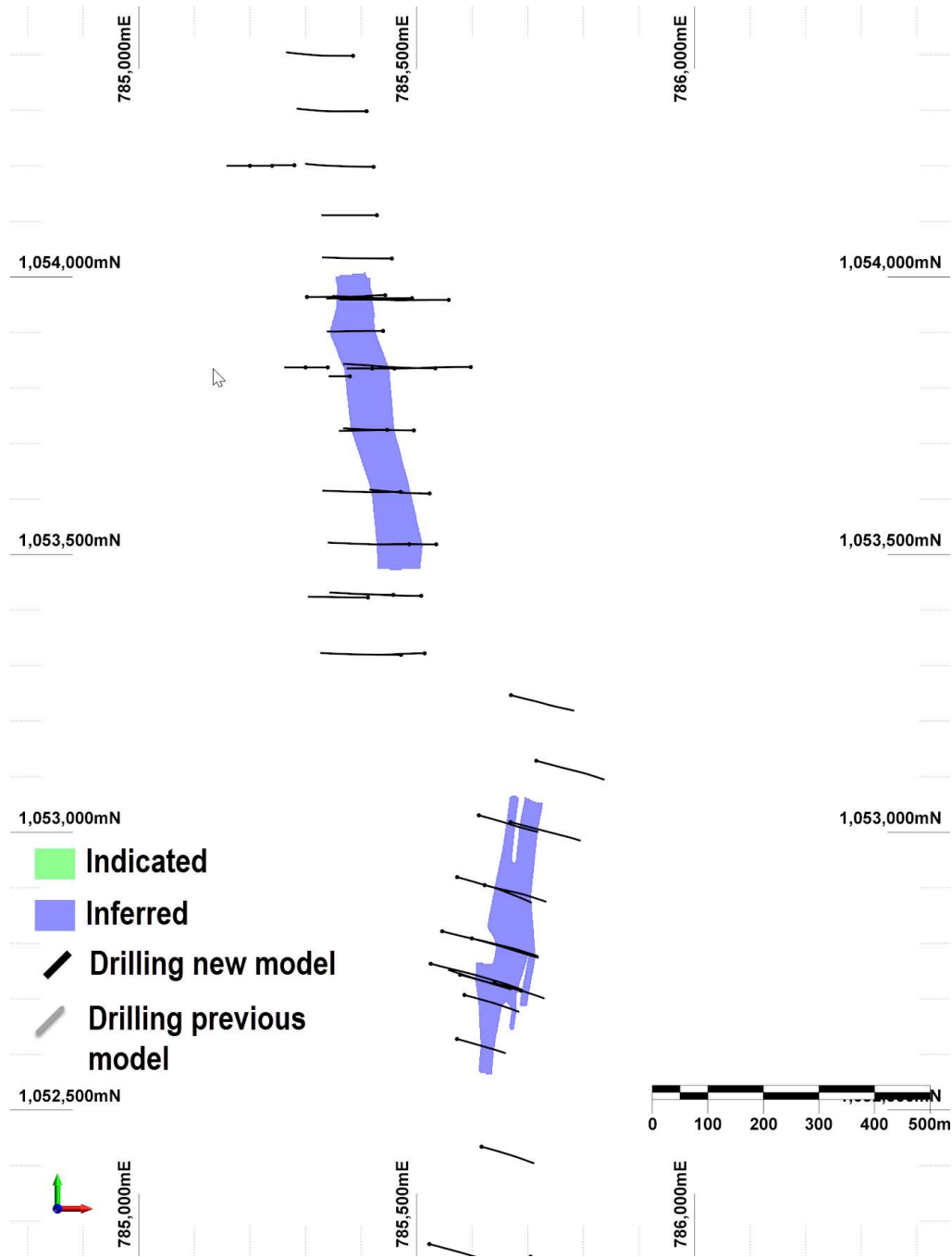


Figure 24: Plan view of BDT3 showing model classification (projected to surface and informing drilling)

For personal use only

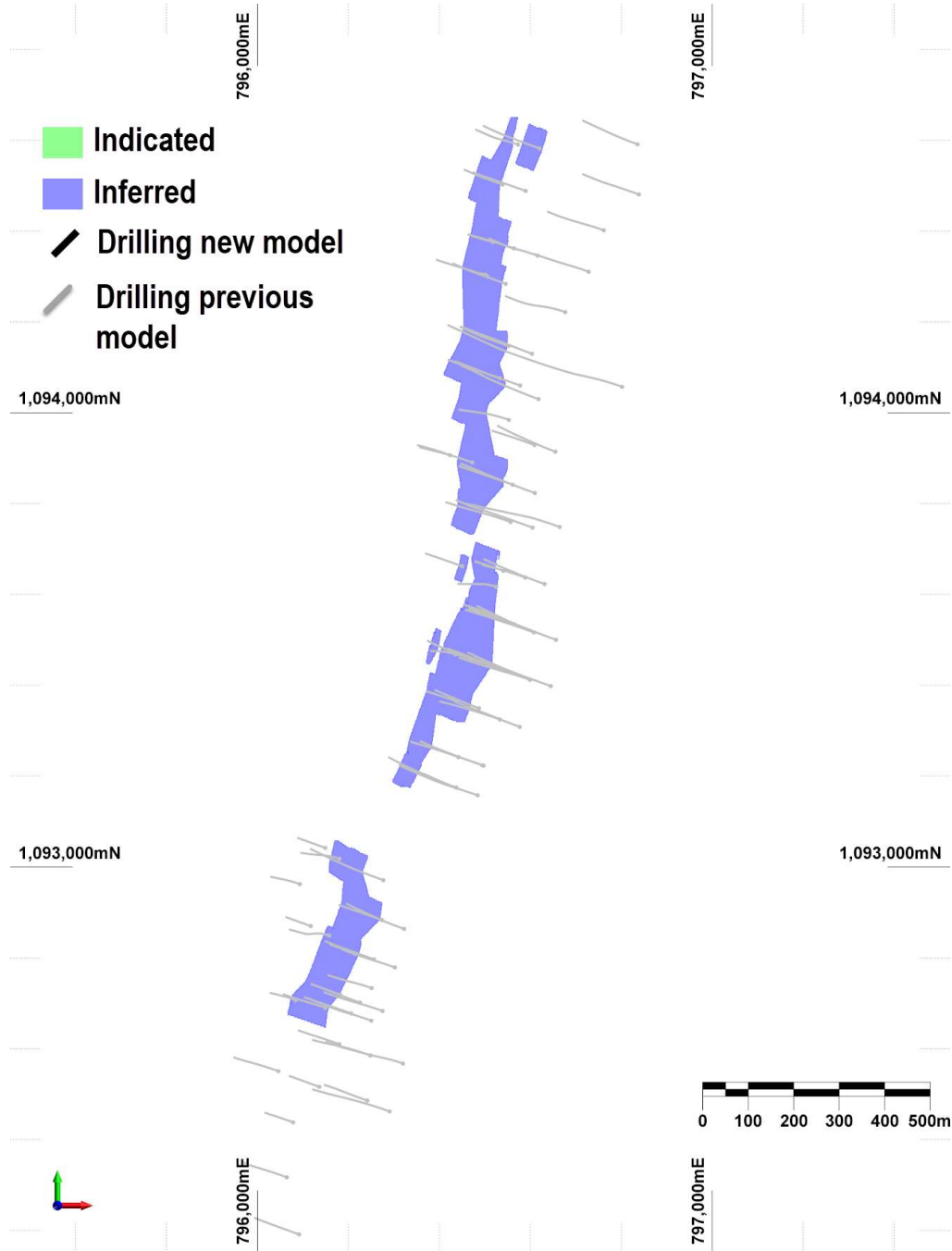


Figure 25: Plan view of BMT1 showing model classification (projected to surface and informing drilling)

For personal use only

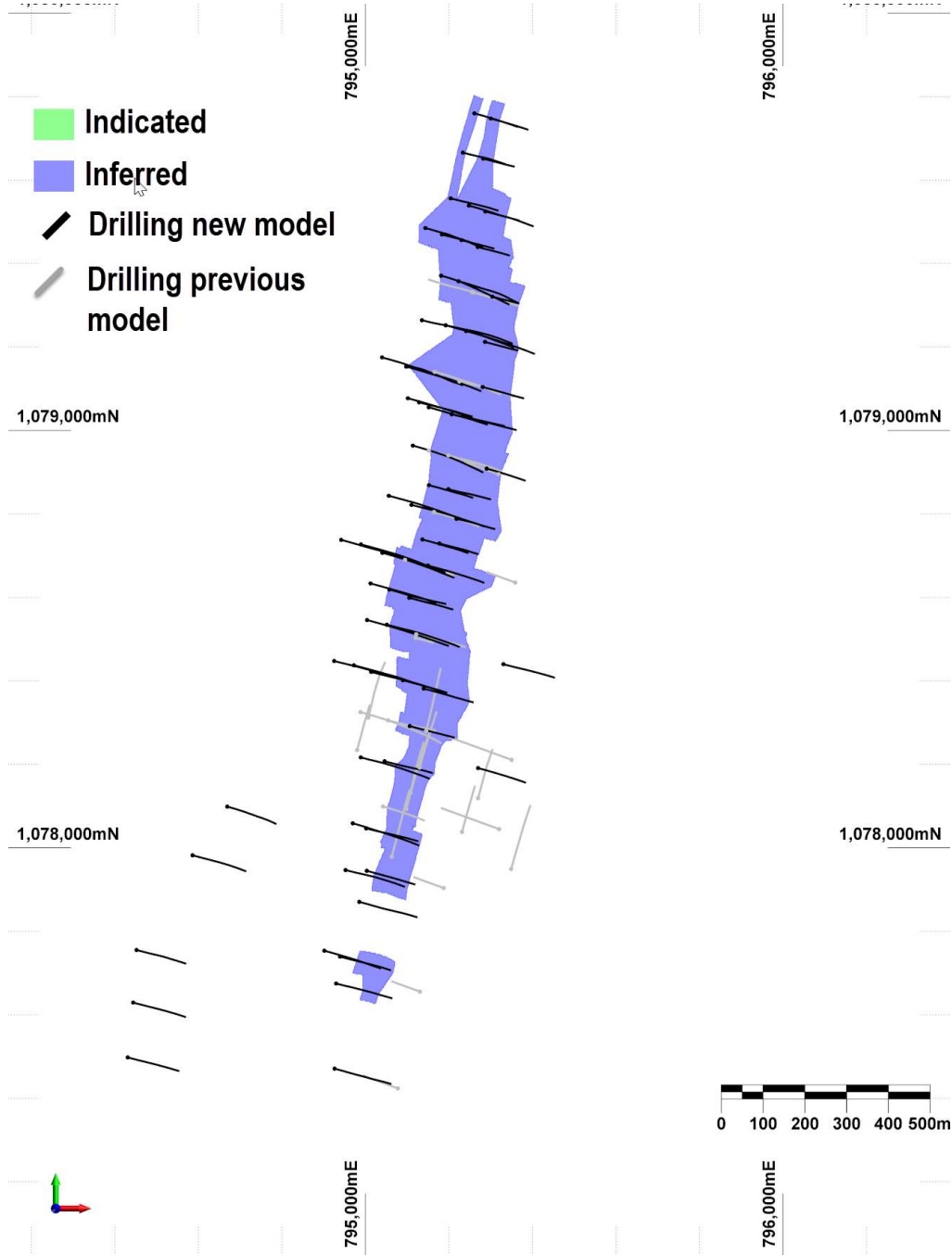


Figure 26: Plan view of BMT3 showing model classification (projected to surface and informing drilling)

For personal use only

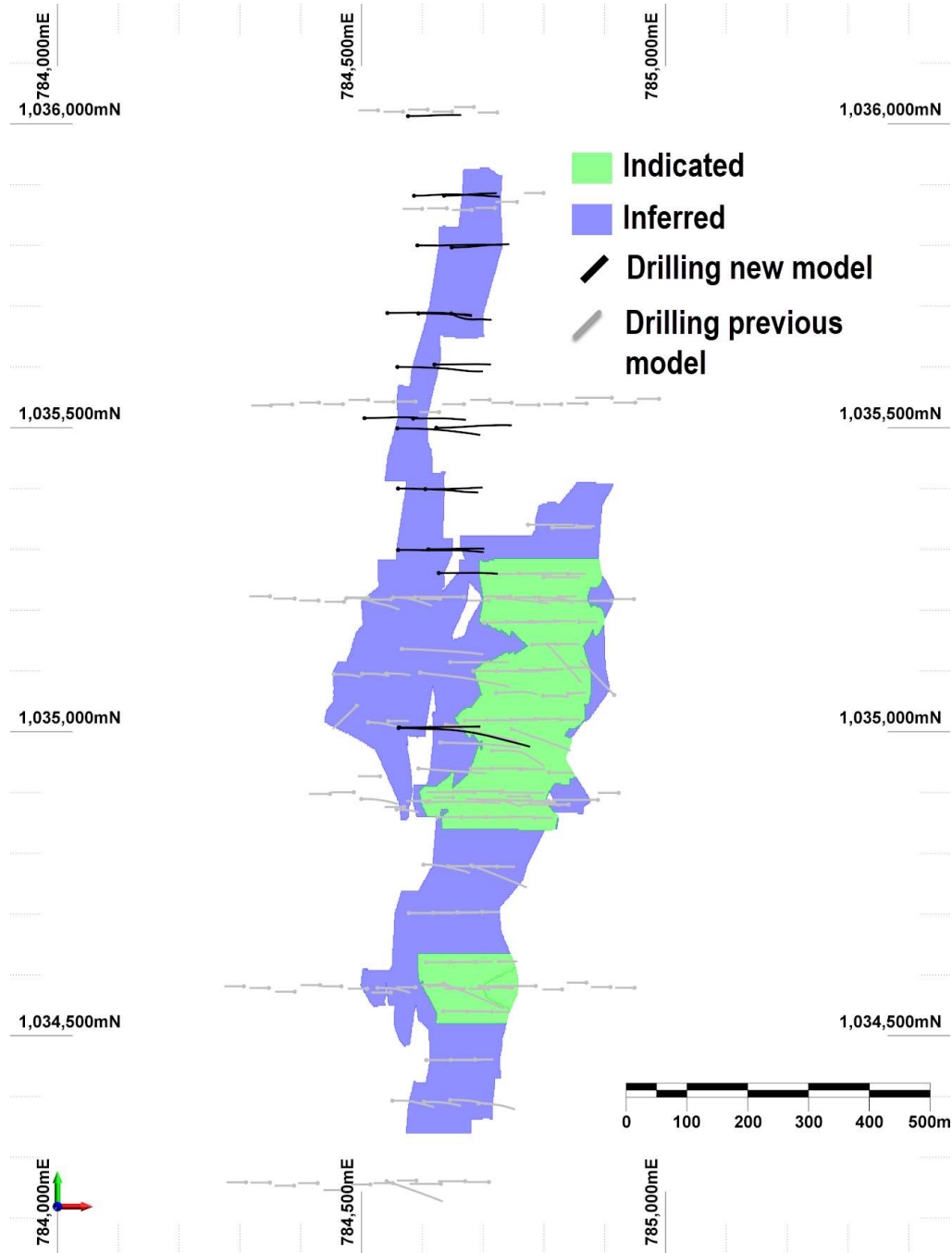


Figure 27: Plan view of BST1 showing model classification (projected to surface) and informing drilling

For personal use only

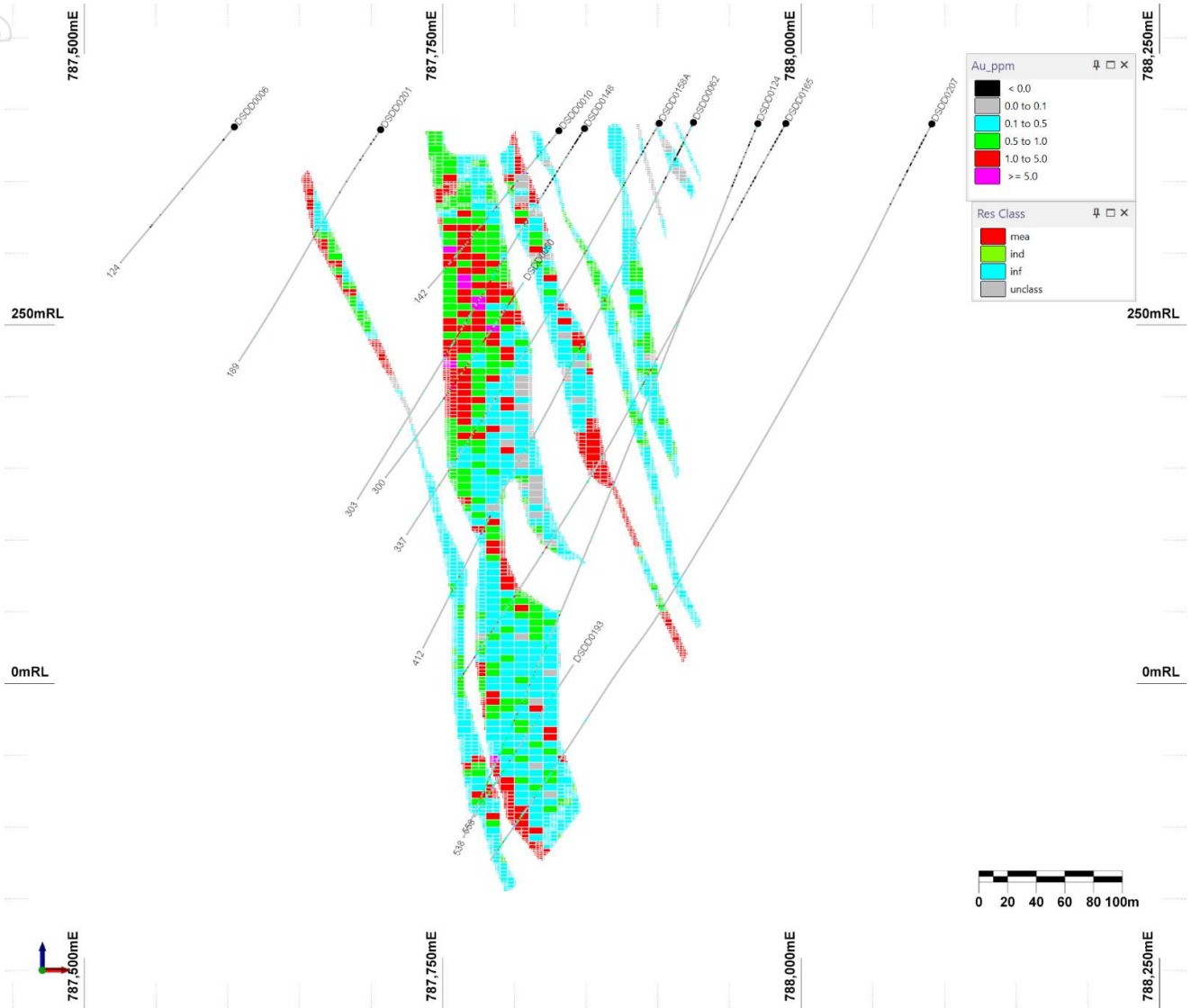


Figure 28: Example cross section (1,054,425mN) BDT1 showing estimated gold grades and drill data (looking north +/-25m)

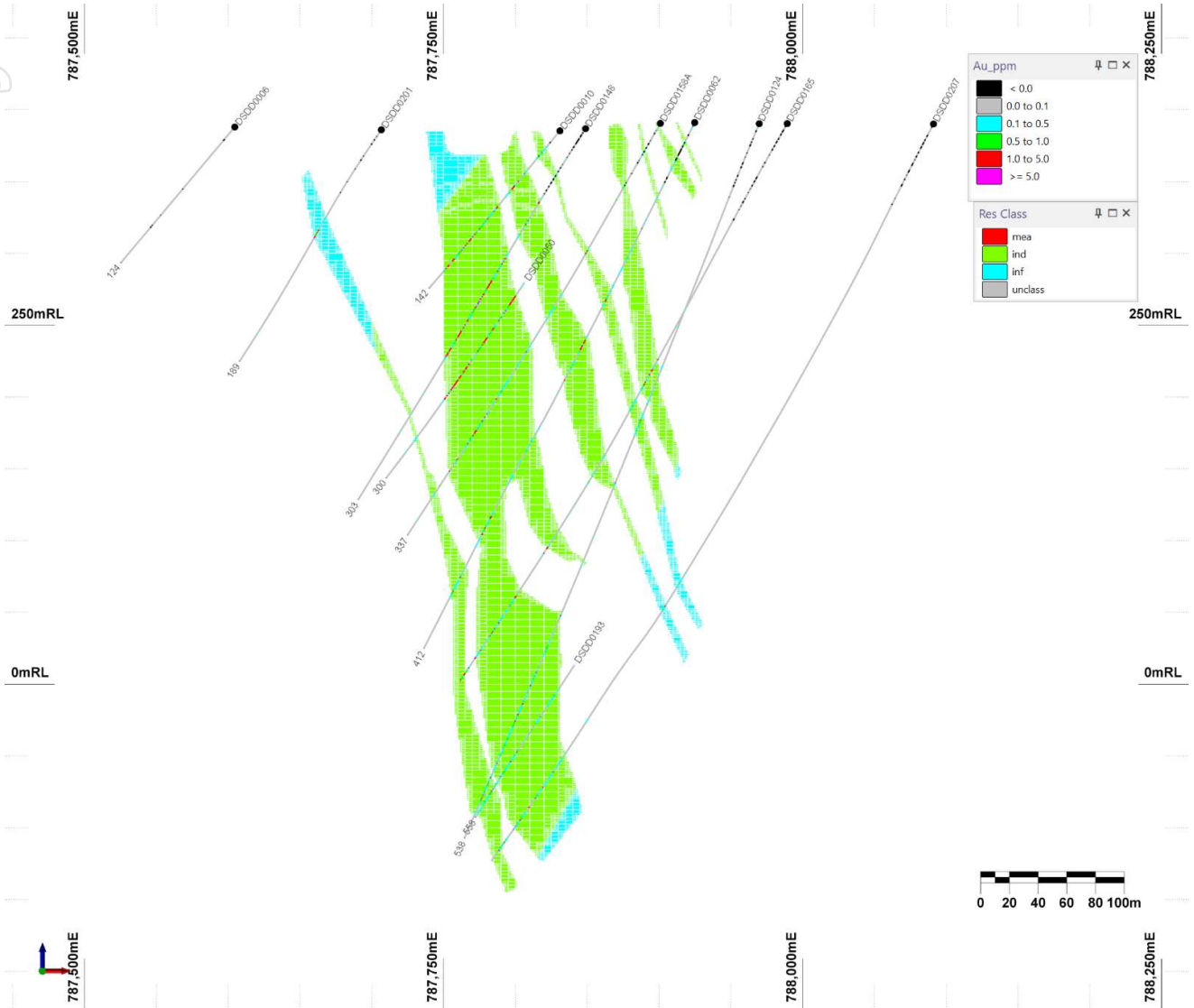


Figure 29: Example cross section (1,054,425mN) BDT1 showing resource classification and drill data (looking north +/-25m)

For personal use only

For personal use only

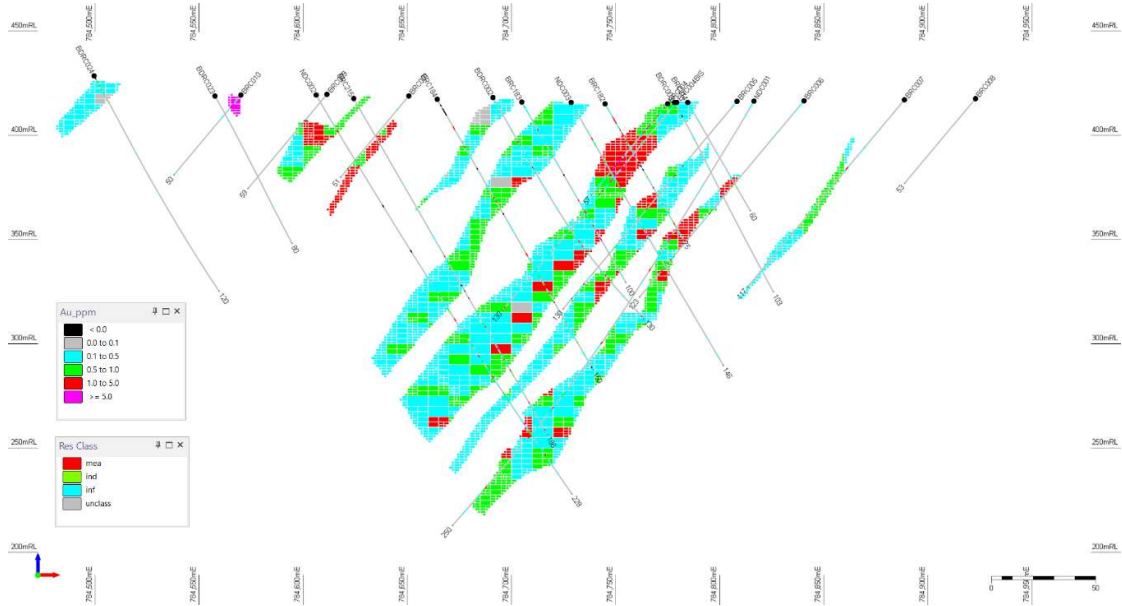


Figure 30: Example cross section (1,034,875mN) BST1 showing estimated gold grades and drill data (looking north +/-25m)

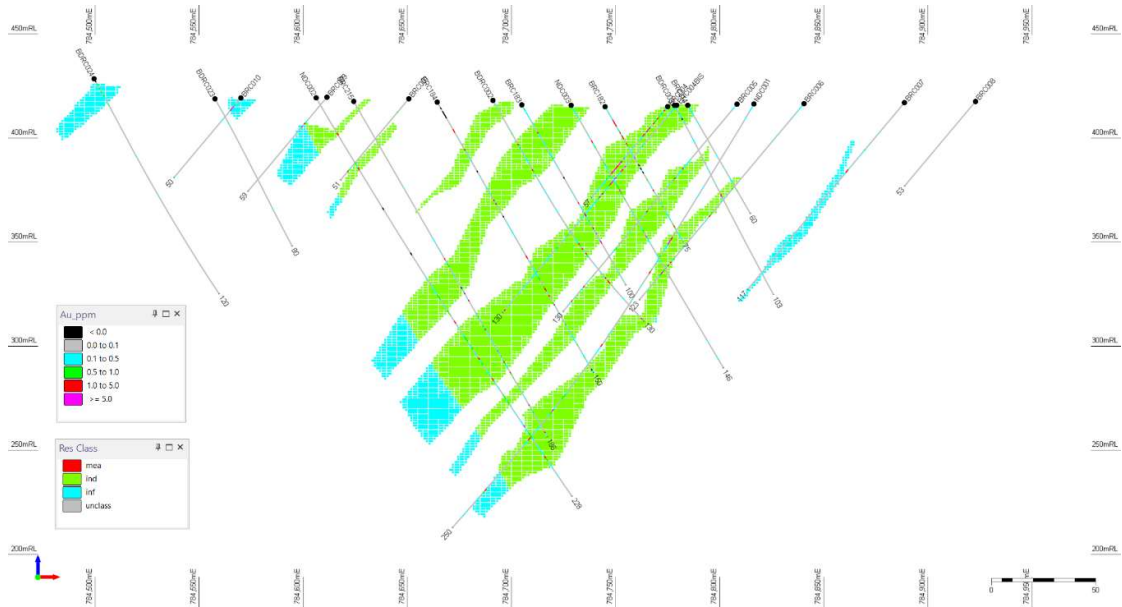


Figure 31: Example cross section (1,034,875mN) BST1 showing resource classification and drill data (looking north +/-25m)

Metallurgical Testwork

SLR is aware that Aurum have reported results from metallurgical testwork for Boundiali samples. Aurum engaged MACA Interquip Mintrex (MIQM) to manage a scoping study metallurgical testwork program for a gold processing plant for its Boundiali Gold Project overseen by accredited laboratory ALS Global in Perth, Western Australia.

The announcement on the 23 December 2024 provides a summary and analysis of the results of recent additional gravity/cyanidation leach testwork and should be read in conjunction with the results released on 4 December 2024 (Figure 32). Previously released results included various comminution tests and whole ore leaching that demonstrated the ore is:

- **Easy to crush:** Ore is likely suitable for a single-stage SAG mill circuit
- **Gravity gold recovery:** Gold can be recovered at 50% to 60% using gravity methods at a 106µm grind
- **Relative fast leaching kinetics:** Leaching can generally be achieved in 24 hours or less
- **High overall gold recoveries:** Overall gold recoveries (gravity + leaching) are excellent at a reasonably coarse grind (**95-99% at 106 µm**)
- **Leads to reduction in reagents:** Leaching on the gravity tails showed a decrease of 32% in lime consumption and a decrease of 40% in cyanide consumption at a P80 of 106µm when compared to whole ore cyanidation leaching
- **Standard free milling process circuit suitable:** A typical gravity concentration and Carbon-in-Leach (CIL) circuit should be effective for processing Boundiali material.

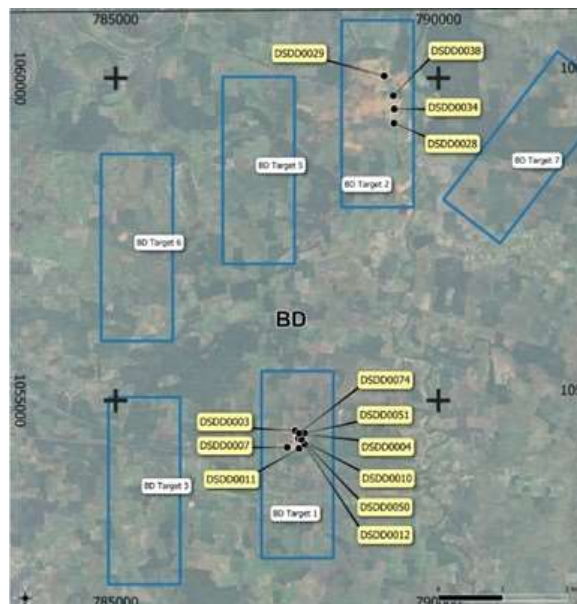


Figure 32: Location of the Diamond Drill Collars used for the Metallurgical Composites

Mining and Metallurgical Methods and Parameters and Other Material Modifying Factors

SLR has assumed that the deposit could be mined using primarily open cut (pit) techniques with some potentially recoverable via underground mining. As noted above, the Mineral Resources have been reported at 0.4 g/t above 300m (depth from surface) and 1 g/t below 300m. The depth constraint was based on preliminary pit optimisation on the deposits to show the maximum potential open pit mineability.

No additional mining dilution has been applied to the reported Resource Estimate as such the estimates are considered undiluted.

As described in the preceding section and based on the testwork completed to date a standard free milling process circuit should be suitable; typical gravity concentration and Carbon-in-Leach (CIL) circuit should be effective for processing Boundiali material. Further feasibility study level testwork is underway and a PFS is expected at the end of CY2025.

No assumptions have been made regarding environmental factors; however, it is noted that the **BST1** deposit is in a classified forest area. SLR is aware that Aurum has negotiated an agreement to allow exploration and exploitation within this area. Further studies and approvals will be required to undertake mining; however, this is not considered a material issue. Aurum will work to mitigate environmental impacts because of any exploration, future mining or mineral processing.

For further details, refer to *Section 3 of the JORC Code, 2012 Edition – Table 1 Estimation and Reporting of Mineral Resources* in the appendices of this report.

JORC Statement of Mineral Resources

Results of the independent Mineral Resources estimate for the Project are tabulated in the Statement of Mineral Resources below, which are reported in line with the requirements of the 2012 JORC Code. SLR has concluded that the Statement of Mineral Resources is suitable for public reporting. The Statement of Mineral Resources is shown in **Table 10**.

Mineral Resources are reported at a cut-off grade of 0.4 g/t Au above 300m depth (based on a pit shell to show the maximum open pit potential) and 1.0 g/t Au below 300m for **BST1, BDT1, BDT2, BDT3, BMT1** and **BMT3**. These cut-off grades were based on a gold price of US\$3,100/oz and estimated mining and processing costs and recoveries factors of similar projects in Côte d'Ivoire based on open pit and underground methods above and below the depths respectively.

Table 10: Statement of Mineral Resources by Deposit as at 31 July 2025, for BST1, BDT1, BDT2, BDT3, BMT1 and BMT3 deposits with 0.4 g/t Au cut off above 300m depth, and 1 g/t below 300m depth

Area	Class	Oxide			Transition			Fresh			Total		
		Quantity (Mt)	Au (g/t)	Au (MOz)	Quantity (Mt)	Au (g/t)	Au (MOz)	Quantity (Mt)	Au (g/t)	Au (MOz)	Quantity (Mt)	Au (g/t)	Au (MOz)
BST1	Indicated	0.8	1.0	0.03	0.9	1.1	0.03	3.2	0.9	0.09	4.9	0.9	0.15
	Inferred	0.6	0.9	0.02	0.9	0.9	0.03	6.1	0.9	0.17	7.6	0.9	0.21
	Sub Total	1.5	0.9	0.04	1.7	1.0	0.05	9.3	0.9	0.26	12.5	0.9	0.36
BDT1	Indicated	0.6	0.9	0.02	0.5	0.9	0.02	10.8	1.1	0.38	12.0	1.1	0.41
	Inferred	0.2	0.9	0.01	0.2	0.9	0.01	2.2	1.0	0.07	2.6	1.0	0.08
	Sub Total	0.8	0.9	0.02	0.7	0.9	0.02	13.0	1.1	0.45	14.6	1.1	0.49
BDT2	Indicated	0.1	0.9	0.003	0.1	0.8	0.002	1.3	0.7	0.03	1.5	0.8	0.04
	Inferred	0.7	0.8	0.018	1.2	0.7	0.03	17.9	0.7	0.43	19.9	0.7	0.48
	Sub Total	0.8	0.8	0.021	1.3	0.7	0.03	19.3	0.7	0.46	21.4	0.7	0.51
BDT3	Indicated												
	Inferred	0.2	0.9	0.004	0.2	1.0	0.01	3.2	1.2	0.12	3.5	1.2	0.13
	Sub Total	0.2	0.9	0.004	0.2	1.0	0.01	3.2	1.2	0.12	3.5	1.2	0.13
BMT1	Indicated												
	Inferred	0.5	0.8	0.01	0.2	0.8	0.004	8.2	1.2	0.30	8.8	1.1	0.32
	Sub Total	0.5	0.8	0.01	0.2	0.8	0.004	8.2	1.2	0.30	8.8	1.1	0.32
BMT3	Indicated												
	Inferred	0.5	1.7	0.03	0.7	1.7	0.04	14.1	1.2	0.52	15.3	1.2	0.59
	Sub Total	0.5	1.7	0.03	0.7	1.7	0.04	14.1	1.2	0.52	15.3	1.2	0.59
All	Indicated	1.6	0.9	0.05	1.5	1.0	0.05	15.4	1.0	0.50	18.5	1.0	0.60
	Inferred	2.5	1.0	0.08	3.2	1.0	0.10	48.5	1.0	1.49	54.2	1.0	1.81
	Total	4.2	1.0	0.13	4.9	1.0	0.16	67.0	1.0	2.12	76.2	1.0	2.41

Note:

1. The Mineral Resources have been compiled under the supervision of Mr. Jeremy who is an associate of SLR and a Registered Member of the Australian Institute of Mining and Metallurgy. Mr. Clark has sufficient experience that is relevant to the style of mineralisation and type of deposit under consideration and to the activity that he has undertaken to qualify as a Competent Person as defined in the JORC Code.
2. All Mineral Resources figures reported in the table above represent estimates at 31st July, 2025. Mineral Resource estimates are not precise calculations, being dependent on the interpretation of limited information on the location, shape and continuity of the occurrence and on the available sampling results. The totals contained in the above table have been rounded to reflect the relative uncertainty of the estimate. Rounding may cause some computational discrepancies.
3. Mineral Resources are reported in accordance with the Australasian Code for Reporting of Exploration Results, Mineral Resources and Ore Reserves (The Joint Ore Reserves Committee Code – JORC 2012 Edition)
4. The Mineral Resources have been reported on a dry basis at a 100% equity stake and not factored for ownership proportions.

For personal use only

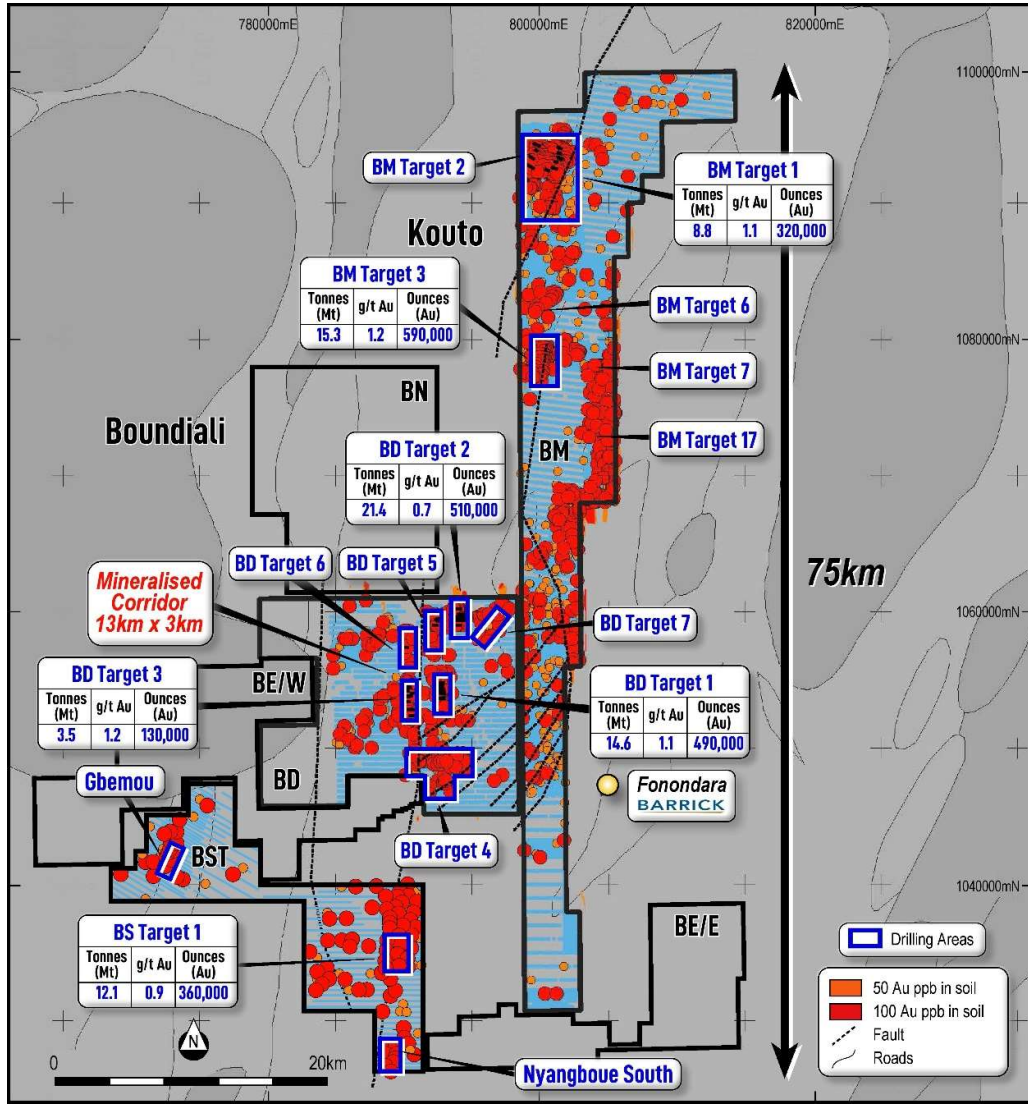


Figure 33: Plan View showing location of Boundiali Mineral Resources

Global Mineral Resources at Boundiali reported by deposit and at varying cut-off grades are provided in Table 11. However, SLR recommends that **Mineral Resources be reported** using the criteria **shown in Table 10**. It is highlighted that Table 11 is **not** a Statement of Mineral Resources and does not include the use of pit shells or mining depths to report the quantities rather the application of various cut off grades. As such variations with Table 10 will occur and a direct comparison is not able to be completed.

Table 11: Boundiali Mineral Resources by deposit and various cutoff grades (figures may not add up due to appropriate rounding)

Cutoff g/t Au	Deposit	Tonnes	g/t Au	Ounces
0.1	BDT1	21,800,000	0.6	435,000
0.2		19,400,000	0.7	422,000
0.3		15,500,000	0.8	391,000
0.4		12,500,000	0.9	357,000
0.5		10,200,000	1.0	324,000
0.6		8,100,000	1.1	288,000
0.7		6,600,000	1.2	256,000
0.8		5,300,000	1.3	226,000
0.9		4,300,000	1.4	198,000
1.0		3,600,000	1.5	176,000
0.1	BDT2	48,800,000	0.5	765,000
0.2		43,100,000	0.5	736,000
0.3		32,000,000	0.6	646,000
0.4		22,900,000	0.7	545,000
0.5		16,900,000	0.8	458,000
0.6		12,700,000	0.9	384,000
0.7		9,300,000	1.0	314,000
0.8		7,100,000	1.1	260,000
0.9		5,400,000	1.2	215,000
1.0		4,100,000	1.3	174,000
0.1	BDT3	5,700,000	0.8	150,000
0.2		5,100,000	0.9	147,000
0.3		4,400,000	1.0	141,000
0.4		3,500,000	1.2	131,000
0.5		2,600,000	1.4	119,000
0.6		2,000,000	1.7	108,000
0.7		1,700,000	1.9	101,000
0.8		1,400,000	2.1	95,000
0.9		1,300,000	2.2	91,000
1.0		1,200,000	2.3	87,000

Cutoff g/t Au	Deposit	Tonnes	g/t Au	Ounces
0.1	BMT3	24,100,000	0.9	664,000
0.2		21,500,000	0.9	651,000
0.3		18,300,000	1.1	625,000
0.4		15,400,000	1.2	593,000
0.5		13,300,000	1.3	563,000
0.6		11,600,000	1.4	533,000
0.7		10,000,000	1.6	499,000
0.8		8,300,000	1.7	459,000
0.9		7,200,000	1.9	428,000
1.0		6,300,000	2.0	400,000
0.1	BST1	34,500,000	0.6	685,000
0.2		29,100,000	0.7	659,000
0.3		22,700,000	0.8	607,000
0.4		17,500,000	1.0	548,000
0.5		13,600,000	1.1	492,000
0.6		10,800,000	1.3	444,000
0.7		8,700,000	1.4	398,000
0.8		7,100,000	1.6	360,000
0.9		5,700,000	1.8	322,000
1.0		4,700,000	1.9	293,000
0.1	BMT1	12,400,000	0.9	353,000
0.2		11,700,000	0.9	349,000
0.3		10,300,000	1.0	338,000
0.4		9,000,000	1.1	324,000
0.5		7,700,000	1.2	306,000
0.6		6,900,000	1.3	291,000
0.7		6,000,000	1.4	273,000
0.8		5,300,000	1.5	255,000
0.9		4,700,000	1.6	240,000
1.0		4,200,000	1.7	220,000

This update has been authorised by the Board of Aurum Resources Limited.

ENDS

For personal use only

FORWARD-LOOKING STATEMENTS

This ASX release contains forward-looking statements about Aurum Resources Limited's exploration activities, drilling programs, and potential Mineral Resource Estimate at the Boundiali and Napié Gold Projects. These statements are based on current expectations and are subject to risks and uncertainties inherent in mineral exploration and mining. Factors that could cause actual results to differ materially include exploration risks, drilling results, resource estimation, gold prices, operational risks, regulatory changes, and broader economic conditions. Investors should not place undue reliance on these forward-looking statements.

COMPETENT PERSON'S STATEMENT

The information in this release that relates to Exploration Targets and Exploration Results is based on information compiled by Mr Mark Strizek, a Competent Person who is a Member of The Australasian Institute of Mining and Metallurgy. Mr Strizek was a non-executive Director of the Company from 1 February 2024 and joined as an executive Director on 1 June 2024. Mr Strizek has sufficient experience that is relevant to the style of mineralisation and type of deposit under consideration and to the activity being undertaking to qualify as a Competent Person as defined in the 2012 edition of the "Australasian Code for Reporting of Exploration Results, Mineral Resources and Ore Reserves". Mr Strizek consents to the inclusion in the announcement of the matters based on his information in the form and context in which it appears. Additionally, Mr Strizek confirms that the entity is not aware of any new information or data that materially affects the information contained in the ASX releases referred to in this presentation.

COMPLIANCE STATEMENT

The information in this report that relates to Boundiali Mineral Resources is based on information evaluated by Mr Jeremy Clark who is a Member of The Australasian Institute of Mining and Metallurgy (MAusIMM) and who has sufficient experience relevant to the style of mineralisation and type of deposit under consideration and to the activity which he is undertaking to qualify as a Competent Person as defined in the 2012 edition of the "Australasian Code for Reporting of Exploration Results, Mineral Resources and Ore Reserves". Mr Clark is an associate of SLR and he consents to the inclusion of the estimates in the report of the Mineral Resource in the form and context in which they appear.

The information in this report that relates to Napié Mineral Resources is extracted from the announcement "Napié Project Listing Rule 5.6 disclosure" released to the Australian Securities Exchange on 4 February 2025 and available to view on www.asx.com.au. The Company confirms that it is not aware of any new information or data that materially affects the information included in the original market announcement and, in the case of estimates of Mineral Resources, that all material assumptions and technical parameters underpinning the estimates in the relevant market announcement continue to apply and have not materially changed. The Company confirms that the form and context in which the Competent Person's findings are presented have not been materially modified from the original market announcement.

No new exploration results are being reported. This report contains information extracted from ASX market announcements reported in accordance with the 2012 edition of the "Australasian Code for Reporting of Exploration Results, Mineral Resources and Ore Reserves" ("2012 JORC Code") and available for viewing at www.asx.com.au and includes results reported previously and published on ASX platform:

29 Jul 2025, Encouraging Drilling Results at BD & BST (ASX:AUE)
 25 Jul 2025, Aurum hits 1.43m at 234.35 g/t gold from 107m at BMT3 (ASX:AUE)
 23 Jul 2025, Quarterly Activities/Appendix 5B Cash Flow Report (ASX:AUE)
 15 Jul 2025, 100 million share placement to strategic investors completed (ASX:AUE)
 27 Jun 2025, Aurum commenced 30,000m diamond drilling at Napié (ASX:AUE)
 17 Jun 2025, AUE hits 66m @ 1.07g/t gold from 33m @ Boundiali BD tenement (ASX:AUE)
 27 May 25, AUE expands Boundiali Gold Project exploration ground (ASX:AUE)
 21 May 25, AUE hits 34m @ 2.32g/t gold from 56m @ Boundiali BD tenement (ASX:AUE)
 13 May 25, Assay Results at Boundiali BM Tenement (Amended) (ASX:AUE)
 13 May 25, Aurum hits 73.10 g/t gold at Boundiali BM tenement (ASX:AUE)
 07 May 2025, Aurum to raise \$35.6 million from strategic investment (ASX:AUE)
 16 Apr 2025, AUE hits 89m @ 2.42 g/t gold at 1.59Moz Boundiali Project (ASX:AUE)
 08 Apr 2025, AUE to start diamond drilling at Boundiali South tenement (ASX:AUE)
 31 Mar 2025, AUE to commence environmental study - Boundiali Gold Project (ASX:AUE)
 27 Mar 2025, Aurum hits 83m@4.87 g/t Au at 1.59Moz Boundiali Project (ASX:AUE)
 19 Mar 2025, Hits 4m at 54.64 g/t Au outside 1.59Moz Boundiali MRE area (ASX:AUE)
 14 Mar 2025, Half Yearly Report and Accounts (ASX:AUE)
 7 Mar 25, Investor Presentation March 2025 (ASX:AUE)
 6 Mar 25, AUE Completes Acquisition of Mako Gold Limited (ASX:AUE)
 27 Feb 25, 12m at 22.02g/t from 145m outside 1.59Moz Boundiali MRE area (ASX:AUE)
 21 Feb 2025, 8m at 8.23g/t from 65m outside 1.59Moz Boundiali MRE area (ASX:AUE)
 4 Feb 2025, Napié Project Listing Rule 5.6 Disclosure (Amended) (ASX:AUE)
 3 Feb 2025, Mako Takeover Offer Closes (ASX:AUE)
 31 Jan 2025, Drill Collar Table Addendum (ASX:AUE)
 31 Jan 2025, Change in substantial holding for MKG (ASX:AUE)
 31 Jan 2025, Quarterly Activities/Appendix 5B Cash Flow Report (ASX:AUE)
 30 Jan 2025, Aurum hits 150 g/t gold at Boundiali, Cote d'Ivoire (ASX:AUE)
 29 Jan 2025, MKG - Suspension of Trading and Delisting From ASX (ASX:AUE)
 24 Jan 2025, Compulsory Acquisition Notice Mako Takeover (ASX:AUE)
 24 Jan 2025, Non-Binding MoU with SANY Heavy Equipment Co (ASX:AUE)

For personal use only

23 Jan 2025, Change in substantial holding for MKG (ASX:AUE)
 9 Jan 2025, Best and Final offer for Mako Gold Limited (ASX:AUE)
 31 Dec 2024, Boundiali Project Maiden Resource delivers 1.6 Moz (amended) (ASX:AUE)
 30 Dec 2024, Boundiali Gold Project Maiden Resource delivers 1.6 Moz (ASX:AUE)
 24 Dec 2024, Change in substantial holding for MKG (ASX:AUE)
 23 Dec 2024, AUE achieves in excess of 95% gold recoveries from Boundiali (ASX:AUE)
 18 Dec 2024, Aurum hits 277 g/t gold at Boundiali BM Target 3
 13 Dec 2024, Change of Directors and Addition of Joint Company Secretary (ASX:AUE & ASX:MKG)
 6 Dec 2024, AUE receives firm commitments for A\$10 million placement (ASX:AUE)
 29 Nov 2024, Aurum earns 80% interest in Boundiali BM tenement (ASX:AUE)
 28 Nov 2024, AUE appoints Mr. Steve Zaninovich as Non-Executive Director (ASX:AUE)
 22 Nov 2024, AUE Declares Takeover Offer for all MKG Shares Unconditional (ASX:AUE)
 15 Nov 2024, Supplementary Bidders Statement (ASX:AUE)
 11 Nov 2024, Aurum hits 36 g/t gold at BM T1 of 2.5km strike (ASX:AUE)
 30 Oct 2024, Bidders Statement (ASX:AUE)
 16 Oct 2024, Recommended Takeover of Mako Gold By Aurum Resources (ASX:AUE)
 09 Sep 2024, Aurum earns 51% interest in Boundiali BM tenement (ASX:AUE)
 05 Sep 2024, AUE hits 40m at 1.03 g/t gold at Boundiali BD Target 1 (ASX:AUE)
 03 Sep 2024, Boundiali South Exploration Licence Renewed (ASX:AUE)
 07 Aug 2024, Aurum to advance met studies for Boundiali Gold Project (ASX:AUE)
 22 July 2024, Prelim metallurgical tests deliver up to 99% gold recovery (ASX:AUE)
 17 June 2024, Aurum hits 69m at 1.05 g/t gold at Boundiali BD Target 1 (ASX:AUE)
 28 May 2024, AUE hits 163 g/t gold in 12m @ 14.56 g/t gold at BD Target 1 (ASX:AUE)
 24 May 2024, Aurum hits 74m @ 1.0 g/t gold at Boundiali BD Target 2 (ASX:AUE)
 15 May 2024, Aurum expands Boundiali Gold Project footprint (ASX:AUE)
 10 May 2024, AUE hits 90m @ 1.16 g/t gold at Boundiali BD Target 1 (ASX:AUE)
 01 May 2024, Aurum Appoints Country Manager in Côte d'Ivoire (ASX:AUE)
 23 April 2024, AUE drilling hits up to 45 g/t gold at Boundiali BD Target 2 (ASX:AUE)
 19 March 2024, AUE signs binding term sheet for 100% of Boundiali South (ASX:AUE)
 12 March 2024, AUE hits 73m at 2.15g/t incl 1m at 72g/t gold at Boundiali (ASX:AUE)
 01 March 2024, Aurum hits 4m at 22 g/t gold in Boundiali diamond drilling (ASX:AUE)
 22 January 2024, Aurum hits shallow, wide gold intercepts at Boundiali, Côte d'Ivoire (ASX:AUE)
 21 December 2023, Rapid Drilling at Boundiali Gold Project (ASX:AUE)
 21 November 2023, AUE Acquisition Presentation (ASX:AUE)
 21 June 2021, Notice of General Meeting/Proxy Form (MSR.ASX)
 21 May 2021, PlusOr to Acquire 6194 sq kms Ground Position in Côte d'Ivoire (MSR.ASX)
 22 August 2019, Boundiali RC Drill Results Continue to Impress (PDI.ASX)
 15 July 2019, RC, Trench Results Grow Boundiali Potential In Côte D'Ivoire (PDI.ASX)
 27 May 2019, New Drill Results Strengthen Boundiali Project Côte D'Ivoire (PDI.ASX)
 16 January 2019, PDI-Toro JV Sharpens Focus with Major Drilling Program (PDI.ASX)
 26 November 2018, Boundiali North - Large Coherent Gold Anomalies in 14km Zone (PDI.ASX)

The Company confirms that it is not aware of any new information or data that materially affects the information included in the previous announcements.

About Aurum

Aurum Resources (ASX:AUE) is an Australian based gold exploration company focused on discovery and development of major gold projects in Côte d'Ivoire, West Africa. Aurum has 3.28Moz gold resources coming from two gold projects, the 2.41Moz Boundiali Gold Project and the 0.87Moz Napié Gold Project. Aurum owns and runs ten (10) diamond drill rigs allowing it to explore faster and more cost effectively than its peers.

Statement of Mineral Resources by Deposit as at 31st July 2025, for BST1, BDT1, BDT2, BDT3, BMT1 and BMT3 deposits with 0.4 g/t Au cut off above 300m depth, and 1 g/t below 300m depth

Area	Class	Oxide			Transition			Fresh			Total		
		Quantity (Mt)	Au (g/t)	Au (MOz)	Quantity (Mt)	Au (g/t)	Au (MOz)	Quantity (Mt)	Au (g/t)	Au (MOz)	Quantity (Mt)	Au (g/t)	Au (MOz)
BST1	Indicated	0.8	1.0	0.03	0.9	1.1	0.03	3.2	0.9	0.09	4.9	0.9	0.15
	Inferred	0.6	0.9	0.02	0.9	0.9	0.03	6.1	0.9	0.17	7.6	0.9	0.21
	Sub Total	1.5	0.9	0.04	1.7	1.0	0.05	9.3	0.9	0.26	12.5	0.9	0.36
BDT1	Indicated	0.6	0.9	0.02	0.5	0.9	0.02	10.8	1.1	0.38	12.0	1.1	0.41
	Inferred	0.2	0.9	0.01	0.2	0.9	0.01	2.2	1.0	0.07	2.6	1.0	0.08
	Sub Total	0.8	0.9	0.02	0.7	0.9	0.02	13.0	1.1	0.45	14.6	1.1	0.49
BDT2	Indicated	0.1	0.9	0.003	0.1	0.8	0.002	1.3	0.7	0.03	1.5	0.8	0.04
	Inferred	0.7	0.8	0.018	1.2	0.7	0.03	17.9	0.7	0.43	19.9	0.7	0.48
	Sub Total	0.8	0.8	0.021	1.3	0.7	0.03	19.3	0.7	0.46	21.4	0.7	0.51
BDT3	Indicated												
	Inferred	0.2	0.9	0.004	0.2	1.0	0.01	3.2	1.2	0.12	3.5	1.2	0.13
	Sub Total	0.2	0.9	0.004	0.2	1.0	0.01	3.2	1.2	0.12	3.5	1.2	0.13
BMT1	Indicated												
	Inferred	0.5	0.8	0.01	0.2	0.8	0.004	8.2	1.2	0.30	8.8	1.1	0.32
	Sub Total	0.5	0.8	0.01	0.2	0.8	0.004	8.2	1.2	0.30	8.8	1.1	0.32
BMT3	Indicated												
	Inferred	0.5	1.7	0.03	0.7	1.7	0.04	14.1	1.2	0.52	15.3	1.2	0.59
	Sub Total	0.5	1.7	0.03	0.7	1.7	0.04	14.1	1.2	0.52	15.3	1.2	0.59
All	Indicated	1.6	0.9	0.05	1.5	1.0	0.05	15.4	1.0	0.50	18.5	1.0	0.60
	Inferred	2.5	1.0	0.08	3.2	1.0	0.10	48.5	1.0	1.49	54.2	1.0	1.81
	Total	4.2	1.0	0.13	4.9	1.0	0.16	67.0	1.0	2.12	76.2	1.0	2.41

Napié Mineral Resource Estimate; On 14 June 2022, a maiden Mineral Resource Estimate was reported in accordance with JORC (2012) comprising two deposits, Tchaga and Gogbala.⁴

Deposit	Category	Tonnes (Mt)	Grade (g/t Au)	Au (koz)
Tchaga	Inferred	14.6	1.16	545
Gogbala	Inferred	7.8	1.29	323
Global Resource	Total	22.5	1.20	868

Resources reported at a cut-off grade of 0.6g/t gold. Differences may occur in totals due to rounding.

⁴ "Napié Project Listing Rule 5.6 Disclosure (Amended)" released to the Australian Securities Exchange on 4 February 2025 and available to view on www.asx.com.au.

Boundiali Gold Project (2.41Moz)

The flagship 2.41Moz Boundiali Gold Project is comprised of four neighbouring exploration tenements and is located within the same greenstone belt as Resolute's large Syama (11.5Moz) gold mine and Perseus' Sissingué (1.4 Moz) gold mine to the north and Montage Gold's 4.5Moz Koné project located to the south. Barrick's Tongon mine (5.0Moz) is located to the northeast (Figure 2 and Figure 3):

- 6) Boundiali Minex Tenement PR0893 ("BM"), 400km², holder Minex West Africa, of which Aurum holds 80% (through its fully owned subsidiary Plusor Global Pty Ltd "Plusor") and can hold interest of between 80-88% in a mining licence.
- 7) Boundiali DS tenement PR808 ("BD"), 260km², holder DS Resources Joint Venture Company, of which Aurum is 80% share capital owner through its fully owned subsidiary Plusor.
- 8) Boundiali South tenement ("BST") 100%, 167.34km² is located directly south of Aurum's **BD** and **BM** tenement. Application for mining exploitation licence was lodged with the Ministry of Mines, Petroleum and Energy in March 2025.
- 9) Boundiali North tenement PR283 ("BN"), 208.87km², under renewal, Aurum to earn up to 70% interest through its wholly owned subsidiary Plusor.

BM gold project JV 80% interest

- Can earn 80-88% interest in future gold production company (Government gets 10% free carry from local partner):
 - 80% if local partner contributes 11% capex
 - 85% if local partner does not contribute capex – they go to 5% free carry
 - 88% if local partner sells us 3% of their interest they go to 2% free carry

BD gold project JV 80% interest

- Can earn 80-88% interest in future gold production company (Government gets 10% free carry from local partner):
 - 80% if local partner contributes 11% capex
 - 85% if local partner does not contribute capex – they go to 5% free carry
 - 88% if local partner sells us 3% of their interest they go to 2% free carry

BST gold project 100% interest

- *Application for mining exploitation licence was lodged with the Ministry of Mines, Petroleum and Energy in March 2025.*
- 90% interest in future gold production company (Government get 10% free carry from Aurum interest)

BN gold project JV

Aurum is earning interest through carrying out exploration to earn 70% interest in three stages:

For personal use only



- Stage 1: Aurum earns 35% interest by spending USD 1.2 million within 36 months of license grant
- Stage 2: Aurum earns 51% interest by spending USD 2.5 million within 60 months of license grant
- Stage 3: Aurum earns 70% interest upon completion of a pre-feasibility study on the tenement.
- Diamond drilling conducted by Aurum will be valued at US\$140 per meter for expenditure calculations
- Upon grant of a mining exploitation license, the ownership structure will be: Aurum (70%), GNRR (20%), Ivorian Government (10%)

Encore JV Project

- Applications (No. 1740 and No. 1745) totalling nearly 320km² are strategically located between Aurum's existing **BD** and **BST** tenements and south of **BM**, offering growth potential for its 1.6Moz Boundiali Gold Project.
- Staged earn-in agreement aligns expenditure with milestones for each permit area:
 - Path to 51% interest: 4,000m diamond drilling.
 - Path to 80% interest: Additional 8,000m diamond drilling (total 12,000m) OR US\$2.5 million nominal expenditure.

Mako Gold

Wholly owned subsidiary of Aurum and holds the following projects:

- 0.87Moz Napié Gold Project. 90% Mako and African American Investment Fund (AAIF) has a 10% interest in the Napié Project free carried to completion of a feasibility study.
- Korhogo Project (100%), significant manganese discovery
- Brobo Project (100%), prospective for lithium/rare earths

Section 1 of the JORC Code, 2012 Edition – Table 1

Sampling Techniques and Data

Criteria	JORC Code explanation	Commentary
Sampling techniques	<p>Nature and quality of sampling (eg cut channels, random chips, or specific specialised industry standard measurement tools appropriate to the minerals under investigation, such as down hole gamma sondes, or handheld XRF instruments, etc). These examples should not be taken as limiting the broad meaning of sampling.</p> <p>Include reference to measures taken to ensure sample representivity and the appropriate calibration of any measurement tools or systems used.</p> <p>Aspects of the determination of mineralisation that are Material to the Public Report. In cases where ‘industry standard’ work has been done this would be relatively simple (eg ‘reverse circulation drilling was used to obtain 1 m samples from which 3 kg was pulverised to produce a 30 g charge for fire assay’). In other cases more explanation may be required, such as where there is coarse gold that has inherent sampling problems. Unusual commodities or mineralisation types (eg submarine nodules) may warrant disclosure of detailed information.</p>	<p>Samples at BST1, BDT1 & BDT2 & BDT3, and BMT1 & BMT3 project areas were collected using drilling techniques including Air Core Drilling (AC), Reverse Circulation (RC), and Diamond Drilling (DD). Holes were generally angled at 60° to 90° towards the perpendicular directions at all block areas to optimally intersect the mineralised zones.</p> <p>AC samples were collected every 1m from cyclone, and 2m composite samples which is combined with two 1/3 of each one-meter sample were sent for assaying. No Aircore samples were used in the estimates reported in the release.</p> <p>RC samples were collected as 1m samples from the cyclone, which were subsequently spear sampled to form 2 m samples which were subsequently sent to the laboratory. All one-metre samples were split using a riffle splitter with 1/4 of the same retained in the plastic bags, the remainder was re-split with 1/4 retained in calico bag and the remainder discarded.</p> <p>Diamond core was logged both for geological and mineralised structures as noted above with all 2024 drilling geotechnically logged. The core was then cut in half using a diamond brick cutting saw on 1m intervals. Typically, the core was sampled to geological intervals as defined by the geologist within the even two metre sample intervals utilised. The right-hand side of the core was always submitted for</p>

For personal use only

For personal use only

Criteria	JORC Code explanation	Commentary
		<p>analysis with the left side being stored in trays on site.</p> <p>The majority of the data is sourced from the 2024 and 2025 drilling which implemented industry and best practice QAQC program, to provide verification of the sample procedure, the sample preparation and the analytical precision and accuracy of the primary laboratory.</p> <p>Sampling and QAQC procedures were carried out to industry standards upon the advice of SLR.</p> <p>Sample preparation was completed by independent international accredited laboratories of MSA lab from for BST and the RC drilling while all DD holes from October 2023-2025 were assayed at Intertek. Following cutting or splitting, the samples were bagged by the Client employees and then sent to the laboratory for preparation and assaying.</p>
Drilling techniques	Drill type (eg core, reverse circulation, open-hole hammer, rotary air blast, auger, Bangka, sonic, etc) and details (eg core diameter, triple or standard tube, depth of diamond tails, face-sampling bit or other type, whether core is oriented and if so, by what method, etc).	AC drilling size is 89 mm, RC drilling comprising 105mm diameter face sampling bit. Diamond drilling carried out with mostly NTW and some HQ sized equipment. PQ-size rods and casing were used at the top the holes to stabilise the collars although no samples were taken from the PQ size core.
Drill sample recovery	<p>Method of recording and assessing core and chip sample recoveries and results assessed.</p> <p>Measures taken to maximise sample recovery and ensure representative nature of the samples.</p> <p>Whether a relationship exists between sample recovery and grade and whether</p>	<p>Within the Diamond drilling typically core recoveries ranged between 85% and 100% for all holes with no significant issues noted. All 2024 holes have recoveries above 95% in the majority of the mineralised areas.</p> <p>Some low recovery are associated with intensely fractured or faulted intervals</p>

Criteria	JORC Code explanation	Commentary
	<p>sample bias may have occurred due to preferential loss/gain of fine/coarse material.</p>	<p>and the more intensely weathered upper zone however these low recoveries are not considered material to the total Mineral Resource currently estimated.</p> <p>RC samples were visually checked for recovery, moisture and contamination. SLR notes that it has relied on information for the majority of holes for sample recovery based on drilling plods however considers sample recovery suitable and notes that the majority of the Mineral Resources reported are underpinned by DD for BDT and BMT areas while BST was supported by DD and RC holes.</p> <p>No relationship exists between sample recovery and grade.</p>
Logging	<p>Whether core and chip samples have been geologically and geotechnically logged to a level of detail to support appropriate Mineral Resource estimation, mining studies and metallurgical studies.</p> <p>Whether logging is qualitative or quantitative in nature. Core (or costean, channel, etc) photography.</p> <p>The total length and percentage of the relevant intersections logged.</p>	<p>All holes were field logged by company geologists. Lithological, alteration and mineralogical nomenclature of the deposit as well as sulphide content were recorded. Geotechnical and structural data measured commenced since 2021.</p> <p>Photography and recovery measurements were carried out by assistants under a geologist's supervision.</p> <p>All drill holes were logged in full.</p> <p>Logging was qualitative and quantitative in nature.</p>
Sub-sampling techniques and sample preparation	<p>If core, whether cut or sawn and whether quarter, half or all core taken.</p> <p>If non-core, whether riffled, tube sampled, rotary split, etc and whether sampled wet or dry.</p>	<p>HQ and NQ core was cut in half using a core saw. Typically the core was sampled to major geological intervals as defined by the geologist initially within the even 1m. All samples were collected from the same side of the core.</p>

For personal use only

Criteria	JORC Code explanation	Commentary
	<p>For all sample types, the nature, quality and appropriateness of the sample preparation technique.</p> <p>Quality control procedures adopted for all sub-sampling stages to maximise representivity of samples.</p> <p>Measures taken to ensure that the sampling is representative of the in situ material collected, including for instance results for field duplicate/second-half sampling.</p> <p>Whether sample sizes are appropriate to the grain size of the material being sampled.</p>	<p>RC samples were collected as 1m samples from the cyclone.</p> <p>Sampling of diamond core and RC chips used industry standard techniques. Sample preparation for the 2021-2024 drilling is detailed below. After drying the sample is subject to a primary crush to 2mm. Sample is split through a riffle splitter until 250gm is left (this involves 4-5 splits through the riffle splitter).</p> <p>The 250 gm sample is milled through an LM5 using a single puck to 90% <75 micron</p> <p>Milled sample is homogenised through a matt roll with a 150gm routine sample collected using a spoon around the quadrants and sent to MSA and Intertek for analysis.</p> <p>Field QC procedures involved the use of 12 types of certified reference materials (1 in 20) which is certified by Geostats Ltd,</p> <p>Primary RC duplicates: Generated from the first splitter off the rig and inserted 5% (1 in 20 samples). This sample is collected from a spear sample from the reject material of the primary split.</p> <p>Primary DD duplicate: Generated by cutting the remaining half core into a ¼ and sampled.</p> <p>Coarse blank samples: Inserted 1 in every 20 samples</p> <p>Laboratory Internal Duplicates and Standards.</p> <p>Sample sizes are considered appropriate to correctly represent the moderately nuggetty gold mineralisation based on:</p>

Criteria	JORC Code explanation	Commentary
		<p>the style of mineralisation, the thickness and consistency of the intersections, the sampling methodology and assay value ranges for Au.</p>
<p>Quality of assay data and laboratory tests</p>	<p>The nature, quality and appropriateness of the assaying and laboratory procedures used and whether the technique is considered partial or total.</p> <p>For geophysical tools, spectrometers, handheld XRF instruments, etc, the parameters used in determining the analysis including instrument make and model, reading times, calibrations factors applied and their derivation, etc.</p> <p>Nature of quality control procedures adopted (eg standards, blanks, duplicates, external laboratory checks) and whether acceptable levels of accuracy (ie lack of bias) and precision have been established.</p>	<p>The analytical techniques used Fire Assay on 150g pulp samples or alternatively, Gold analysis by ChrysoTM PhotonAssay methodology. This uses a high-energy X-ray source that is used to irradiate large mineral samples, typically about 500g compared to the 50g of the fire assay. The X-rays induce short-lived changes in the structure of any gold nuclei present. As the excited gold nuclei return to their ground state, they emit a characteristic gamma-ray signature, the intensity of which is directly proportional to the concentration of gold. The penetrating nature of ChrysoTM PhotonAssay provides much higher energy than those used in conventional X-ray fluorescence (XRF), which provides a true bulk analysis of the entire sample. Samples are presented into a fully automatic process where samples are irradiated, measured, data collection and reporting.</p> <p>No geophysical tools were used to determine any element concentrations used in this Mineral Resource estimate.</p> <p>Sample preparation checks for fineness were carried out by the laboratory as part of internal procedures to ensure the grind size of 2mm was being attained. Laboratory QAQC includes the use of internal standards using certified reference material, and pulp replicates. No anomalous assays were noted in</p>

Criteria	JORC Code explanation	Commentary
		<p>information provided to SLR or from discussions with the Client.</p> <p>The QAQC results confirm that acceptable levels of accuracy and precision have been established for the Classifications applied following an independent review by SLR.</p>
<p>Verification of sampling and assaying</p>	<p>The verification of significant intersections by either independent or alternative company personnel.</p> <p>The use of twinned holes.</p> <p>Documentation of primary data, data entry procedures, data verification, data storage (physical and electronic) protocols.</p> <p>Discuss any adjustment to assay data.</p>	<p>The Company has developed logging and sampling procedures that is based on the African experience of the local teams and subsequently reviewed by SLR during the site visits that confirmed the processes and protocols implemented giving the results a high level of confidence. The Company geologists log the core and RC samples according to the existing lithological, alteration and mineralogical nomenclature of the deposits as well as sulphide, veining and structural content. Photography and recovery measurements were carried out by assistants under a geologist's supervision</p> <p>Twinned holes have not been drilled as not considered appropriate as the Company has been responsible for all holes.</p> <p>Logging records were mostly registered in physical format and were input into a digital format. The core photographs, collar coordinates and down the hole surveys were received in digital format.</p> <p>Assay values that were below detection limit were adjusted to equal half of the detection limit value. Un-sampled intervals were assumed to have no mineralisation and they were therefore</p>

Criteria	JORC Code explanation	Commentary
		<p>set to 0.005g/t in the database; however these are minimal.</p> <p>The selective original data review and site visit observations carried out by SLR did not identify any material issues with the data entry or digital data. In addition, SLR considers that the onsite data management system meets industry standard which minimizes potential 'human' data-entry errors and no systematic fundamental data entry errors or data transfer errors.</p>
<p>Location of data points</p>	<p>Accuracy and quality of surveys used to locate drill holes (collar and down-hole surveys), trenches, mine workings and other locations used in Mineral Resource estimation.</p> <p>Specification of the grid system used.</p>	<p>All drill hole and trench collar locations were surveyed utilising the differential GPS methods by both company and third-party surveyors.</p> <p>Grid system is WGS 84 / UTM zone 29N</p> <p>SLR notes that the DGPS system utilised is typically within a 10 cm accuracy range which is suitable for the classification applied.</p> <p>The Client's drilling teams utilised the Reflex EZ-shot instrument to measure deviations in azimuth and inclination angles for all holes; however, vertical holes were not surveyed. The first measurement is taken at 12 m depth, and then at approximately every 30 to 50m depth interval for BST1 area, 50 to 100m for BDT1 & BDT2 & BDT3 and BMT1 & BMT3, and at the end of the hole.</p> <p>Small scale artisanal mining has been undertaken on several areas within the project. This mining is restricted typically to the upper 10m of the oxide material however is variable in depth and extent.</p>

Criteria	JORC Code explanation	Commentary
	Quality and adequacy of topographic control.	For all resource areas, no significant UG mining has been undertaken as such the latest topography was utilised as the depletion with depletion for the artisanal workings to a depth of 15m in disturbed zones.
Data spacing and distribution	<p>Data spacing for reporting of Exploration Results.</p> <p>Whether the data spacing and distribution is sufficient to establish the degree of geological and grade continuity appropriate for the Mineral Resource and Ore Reserve estimation procedure(s) and classifications applied.</p> <p>Whether sample compositing has been applied.</p>	<p>Drill hole collars were generally spaced on initially 100 m by 50 m grid in all deposits with drilling including infill drilling on 50m by 50m spacing or closer within the BST area.</p> <p>The drill hole spacing and distribution is considered sufficient to establish the degree of continuity appropriate for the Inferred and Indicated Mineral Resource estimation procedures. Four largest objects were selected for variogram analysis for BST1, the three largest one object was selected for variogram analysis for BDT1, BDT2 and BDT3 areas, and the two largest objects were selected for variogram analysis for BMT1 and BMT3.</p> <p>The most prevalent sample length inside the mineralised wireframes was 1m, and as a result, 1m was chosen as the composite length. The samples inside the mineralised wireframes were then composited to 1 m length.</p>
Orientation of data in relation to geological structure	<p>Whether the orientation of sampling achieves unbiased sampling of possible structures and the extent to which this is known, considering the deposit type.</p> <p>If the relationship between the drilling orientation and the orientation of key mineralised structures is considered to have introduced a sampling bias, this</p>	<p>No bias was interpreted to be introduced as most drill holes are angled to intersect the mineralisation perpendicular (or as close to it) in all block areas, which is approximately are interpreted being comprised of southeast-dipping lodes striking 0-15° , dipping at varying angles of inclination typically between 60° and 80° with BST1 dipping to west, BDT1 & BDT2 dipping</p>

For personal use only

Criteria	JORC Code explanation	Commentary
	should be assessed and reported if material.	to east, BMT1 dipping to SE, and BMT3 dipping NW.
Sample security	The measures taken to ensure sample security.	Chain of custody is managed by the Client's senior site geologists and geotechnicians. Samples are stored in a core shed at site and samples were delivered to the laboratory by client geologists. Client employees have no further involvement in the preparation or analysis of the samples.
Audits or reviews	The results of any audits or reviews of sampling techniques and data.	Detailed reviews of sampling techniques were carried out on the site visit by SLR in October 2024 and March 2025.

For personal use only

Section 2 of the JORC Code, 2012 Edition – Table 1

Criteria	JORC Code explanation	Commentary
Mineral tenement and land tenure status	<p>Type, reference name/number, location and ownership including agreements or material issues with third parties such as joint ventures, partnerships, overriding royalties, native title interests, historical sites, wilderness or national park and environmental settings.</p> <p>The security of the tenure held at the time of reporting along with any known impediments to obtaining a license to operate in the area.</p>	<p>The Project is contained within three adjacent exploration licenses (PR808, PR893, Mining licence application for PR414) which are currently held by Aurum Resources through its wholly owned subsidiaries as part owners.</p> <p>PR893 (BM), 400km², holder Minex West Africa, of which Aurum is earning interest of up to 80-88% through its fully owned subsidiary Plusor Global Pty Ltd (“Plusor”).</p> <p>PR808 (“BD”), 260km², holder DS Resources Joint Venture Company, of which Aurum is 80% share capital owner through its fully owned subsidiary Plusor.</p> <p>Mining licence replacement for PR-414 (“BST”), 167 km². Plusor.</p> <p>The tenements are in good standing with no known impediment to future grant of a mining lease (which is under application).</p>
Exploration done by other parties	Acknowledgment and appraisal of exploration by other parties.	<p>Several exploration programs have been conducted by companies over the Project area prior to Aurum taking over the management.</p> <p>BST had an advanced modern database including soils, geophysics as well as: AC: 545 holes, 21,056.00m RCDD: 10 holes, 1,658.12m DD: 8 holes, 1,771.33m RC: 247 holes, 17,975.00m</p> <p>On the BD tenement there was soils, trenching and 91 RC holes drilled for 6,229m.</p>

For personal use only

Criteria	JORC Code explanation	Commentary
		<p>These drilling results have been publicly reported by various CP's on behalf of the operating company at the time and reviewed by SLR. All QAQC results are available and the data are considered to be suitable to underpin the reporting of Mineral Resources.</p> <p>The license area was not historically known as a prospective region for gold, but recent artisanal workings revealed the presence of primary gold mineralisation in artisanal pits in BD and BM areas.</p>
Geology	Deposit type, geological setting and style of mineralisation.	<p>The Boundiali Deposits are located within the Proterozoic Birimian rocks of the Man shield. It is situated on, 100km west of from the Korhogo in the northern part of the Côte d'Ivoire. They are located in the Bagoué- Syama shear zone within the sedimentary rock with minor associated intrusions of mafic dykes and late-stage granitoids. The various rock units trend NS to NNE similar to the regional metamorphic grade. The regional trend is NE to N.</p> <p>The Boundiali deposits resemble typical shear zone deposits of the West African granite-greenstone terrane. The deposits themselves are associated with a major regional shear zone and are developed in a sandstone. Mineralisation may be spatially related to the emplacement of intrusives. The gold mineralisation is mesothermal in origin and occurs as free gold in quartz vein stockworks and zones of silicification, associated with pyrite and chalcopyrite. The gold mineralisation is found in linear zones with the contacts</p>

For personal use only

Criteria	JORC Code explanation	Commentary
		<p>showing evidence of shearing. Free gold is frequently observed. Alteration is weak to strong depending on the development of the system typically being sericite.</p> <p>Two types of deformation are present in the drill cores: ductile deformation and brittle deformation. The gold mineralisation is related to deformed sandstone and graywacke, in shear zones, with sulphides (mainly pyrite and minor chalcopyrite) associated with visible gold. Alteration is characterized by chlorite, sericite, calcite, secondary quartz and disseminated pyrite. This assemblage is well developed in schistose, foliated rocks with presence of quartz veins or veinlets.</p>
<p>Drill hole information</p>	<p>A summary of all information material to the understanding of the exploration results including a tabulation of the following information for all Material drill holes:</p> <p>easting and northing of the drill hole collar</p> <p>elevation or RL (Reduced Level – elevation above sea level in metres) of the drill hole collar</p> <p>dip and azimuth of the hole</p> <p>down hole length and interception depth</p> <p>hole length</p> <p>If the exclusion of this information is justified on the basis that the information is not Material and this exclusion does not detract from the</p>	<p>Drill hole locations are shown on the map within the body of this Mineral Resource report and the ASX release.</p> <p>No RC or DD drill hole information has been excluded however very limited AC drilling was only utilised for geological interpretation and resource estimation.</p>

Criteria	JORC Code explanation	Commentary
	understanding of the report, the Competent Person should clearly explain why this is the case.	
Data aggregation methods	<p>In reporting Exploration Results, weighting averaging techniques, maximum and/or minimum grade truncations (e.g. cutting of high grades) and cut-off grades are usually Material and should be stated.</p> <p>Where aggregate intercepts incorporate short lengths of high grade results and longer lengths of low grade results, the procedure used for such aggregation should be stated and some typical examples of such aggregations should be shown in detail.</p> <p>The assumptions used for any reporting of metal equivalent values should be clearly stated.</p>	<p>Exploration results are not being reported</p> <p>No aggregation of intercepts was carried out. Drilling intervals are predominantly 1m.</p> <p>AC, RC samples were collected as 1m samples from the cyclone.</p> <p>Metal equivalent values are not being reported.</p>
Relationship between mineralisation widths and intercept lengths	<p>These relationships are particularly important in the reporting of Exploration Results.</p> <p>If the geometry of the mineralisation with respect to the drill hole angle is known, its nature should be reported.</p> <p>If it is not known and only the down hole lengths are reported, there should be a clear statement to this effect (e.g. 'down hole length, true width not known').</p>	<p>Most drill holes are angled to east at BST1, to west at BDT1 & BDT2, to northwest at BMT1 and BDT3 and to southeast at BMT3 which are approximately perpendicular to the orientation of the mineralised trends as all deposits have similar styles of mineralisation which was interpreted as being comprised of southeast-dipping lodes striking 0 - 30° dipping at varying angles of inclination typically between 60° and 80°.</p> <p>Example cross sections are provided in the main body of the report and the press release however exploration results are not being reported</p>
Diagrams	Appropriate maps and sections (with scales) and tabulations of intercepts should be included for any significant	Relevant diagrams have been included within the Mineral Resource report main body of report and ASX release

Criteria	JORC Code explanation	Commentary
	discovery being reported. These should include, however not be limited to a plan view of drill hole collar locations and appropriate sectional views.	However exploration results are not being reported.
Balanced Reporting	<p>Accuracy and quality of surveys used to locate drill holes (collar and down-hole surveys), trenches, mine workings and other locations used in Mineral Resource estimation.</p> <p>Where comprehensive reporting of all Exploration Results is not practicable, representative reporting of both low and high grades and/or widths should be practiced to avoid misleading reporting of Exploration Results.</p>	<p>All drill hole and trench collar locations were surveyed utilising the differential GPS methods by company surveyors. DGPS system utilised it typically within 10 cm accuracy range.</p> <p>Drilling teams utilised the Reflex EZ-shot instrument to measure deviations in azimuth and inclination angles for all holes; however, vertical holes were not surveyed. The first measurement is taken at 12 m depth, and then at approximately every 30 to 50m depth interval for BST area, 50 to 100m for BDT1, BDT2 and BDT3, and BMT1 & BMT3, and at the end of the hole.</p>
Other substantive exploration data	Other exploration data, if meaningful and material, should be reported including (however not limited to): geological observations; geophysical survey results; geochemical survey results; bulk samples - size and method of treatment; metallurgical test results; bulk density, groundwater, geotechnical and rock characteristics; potential deleterious or contaminating substances.	All interpretations for each deposit are consistent with observations made and information gained during drilling at the project.
Further work	<p>The nature and scale of planned further work (e.g. tests for lateral extensions or depth extensions or large-scale step-out drilling).</p> <p>Diagrams clearly highlighting the areas of possible extensions, including the main geological interpretations and future drilling areas, provided this</p>	<p>Further exploration work has been planned which will focus on expanding the resource and infill drilling to increase the confidence in the resource.</p> <p>Subject to several years of systematic exploration the Project contains numerous gold anomalous areas. While encompassing the entire Project, this</p>

Criteria	JORC Code explanation	Commentary
	information is not commercially sensitive.	Report focused on the estimation of Mineral Resources within six areas (BST1, BDT1, BDT2 & BDT3, and BMT1 & BMT3); however, several other anomalous areas have been identified within the Project. Further exploration work is planned.

For personal use only

Section 3 of the JORC Code, 2012 Edition – Table 1

Estimation and Reporting of Mineral Resources

Criteria	JORC Code explanation	Commentary
Database integrity	<p>Measures taken to ensure that data has not been corrupted by, for example, transcription or keying errors, between its initial collection and its use for Mineral Resource estimation purposes.</p> <p>Data validation procedures used.</p>	<p>The data base is systematically audited by Client’s senior geologists. All drill logs are validated digitally by the database geologist once assay results are returned from the laboratory.</p> <p>The selective original data review and site visit observations carried out by SLR did not identify any material issues with the data entry or digital data. In addition, SLR considers that the onsite data management system meets industry standard which minimizes potential ‘human’ data-entry errors and no systematic fundamental data entry errors or data transfer errors; accordingly, SLR considers the integrity of the digital database to be sound.</p> <p>SLR performed data audits in Surpac and in excel.</p>
Site visits	<p>Comment on any site visits undertaken by the Competent Person and the outcome of those visits.</p> <p>If no site visits have been undertaken indicate why this is the case.</p>	<p>A site visit was conducted by Jeremy Clark (SLR) in October 2024 and March 2025. During the visits the visitors reviewed the outcrops, drill-hole location and core sheds as well as held various discussions with site personnel. SLR sighted mineralised drill-hole intersections of all the deposits, down hole surveys and assay data, laboratory facilities, sampling and reviewed survey data acquisition protocols, assay procedures, bulk density determination, logging and sample preparation procedures and quality control (QC) results.</p>

For personal use only

Criteria	JORC Code explanation	Commentary
		SLR concluded that the data was adequately acquired and validated following industry best practices.
Geological interpretation	<p>Confidence in (or conversely, the uncertainty of) the geological interpretation of the mineral deposit.</p> <p>Nature of the data used and of any assumptions made.</p> <p>The effect, if any, of alternative interpretations on Mineral Resource estimation.</p> <p>The use of geology in guiding and controlling Mineral Resource estimation.</p> <p>The factors affecting continuity both of grade and geology.</p>	<p>The confidence in the geological interpretation is considered to be assumed and is based on good quality drilling.</p> <p>All deposits have similar styles of mineralisation which were interpreted as being comprised of north or northeast-striking lodes with striking degrees of approximately 0-15°. Lode dipping at varying angles of inclination are typically between 60 and 80° for BST, BDT1 & BDT2, and BMT1 & BMT3 while with BST dip to west, BDT1 & BDT2 & BDT3 dip to east, BMT1 dip to SE, and BMT3 dipping NW. These lodes appear to coincide with strong linear geological structures which are offset by several offsetting faults.</p> <p>SLR defined a total of 276 discrete bodies for all Deposits (58 bodies for BST, 42 bodies for BDT1, 46 bodies for BDT2, 38 bodies for BDT3, 47 bodies for BMT1 and 45 bodies for BMT3) based on the orientation and shape of the mineralisation, which were further domained. These domains are likely separated by interpreted fault zones identified from geophysical surveys and structural readings, however the style of mineralisation appears the same between domains, however grade tenure varies. No additional high grade domaining was undertaken within the deposit based on statistic reviews however further infill drilling may confirm the presence and will be reviewed at the next update.</p>

Criteria	JORC Code explanation	Commentary
		<p>Current interpretation is considered suitable for the classification applied Indicated and Inferred.</p> <p>Outcrops of mineralisation and host rocks within the Project support the geometry of the mineralisation.</p>
Dimensions	The extent and variability of the Mineral Resource expressed as length (along strike or otherwise), plan width, and depth below surface to the upper and lower limits of the Mineral Resource.	<p>Mineral Resource Estimate is comprised of six areas.</p> <ul style="list-style-type: none"> • BST1 Mineral Resource area is located on the BST tenement and extends over a strike length of 2,350m (from 1,033,800mN – 1,036,150mN), has a typical width of 1,000m (from 784,200mE – 785,200mE). It includes the 400m vertical interval from 100mRL to 500mRL. • BDT1 Mineral Resource area located on the BD tenement extends over a strike length of 1,400m (from 1,053,800mN – 1,055,200mN), has a typical width of 800m (from 787,400mE – 788,200mE). It includes the 670m vertical interval from -250mRL to 420mRL. • BDT2 Mineral Resource area is also located on the BD tenement extends over a strike length of 1,800m (from 1,058,800mN – 1,060,600mN), has a typical width of 1,200m (from 788,500mE – 789,700mE). It includes the 550m vertical interval from -100mRL to 450mRL. • BDT3 Mineral Resource area is also located on the BD tenement extends over a strike length of 2,800m (from 1,052,200mN – 1,055,000mN), has a typical width of 1,000m (from 785,000mE – 786,000mE). It includes the

Criteria	JORC Code explanation	Commentary
		<p>450m vertical interval from -0mRL to 450mRL.</p> <ul style="list-style-type: none"> •BMT1 Mineral Resource area is located on the BM tenement and extends over a strike length of 3,000m (from 1,091,900mN – 1,094,900mN), has a typical width of 2,800m (from 794,300mE – 797,100mE). It includes the 500m vertical interval from -50mRL to 450mRL. •BMT3 Mineral Resource area is also located on the BM tenement and extends over a strike length of 2,000m (from 1,077,600mN – 1,079,600mN), has a typical width of 1,500m (from 794,500mE – 796,000mE). It includes the 400m vertical interval from 100mRL to 500mRL.
<p>Estimation and modelling techniques</p>	<p>The nature and appropriateness of the estimation technique(s) applied and key assumptions, including treatment of extreme grade values, domaining, interpolation parameters and maximum distance of extrapolation from data points. If a computer assisted estimation method was chosen include a description of computer software and parameters used.</p>	<p>The Ordinary Kriging (“OK”) algorithm was selected for grade interpolation of Au for all block areas. The Inverse Distance (“ID”) and Nearest Neighbour (“NN”) algorithms were also assessed as a way of validating the OK estimation results.</p> <p>Additionally, due to the limited drilling near surface if mineralisation was observed in the alluvial pits, the lodes were extrapolated to surface.</p> <p>With current drilling which intersected with the main objects, the major largest lodes of objects 1-4 for BST1, object 1 for BDT1, object 2 for BDT2, object 1 for BDT3, object 2 for BMT1, and object 2 for BMT3 were selected for the variogram analysis. And the parameters of main domain were also used for other domain’s estimation. For BST1 area, all other main objects’ analysis results (2,3,4</p>

Criteria	JORC Code explanation	Commentary
	<p>The availability of check estimates, previous estimates and/or mine production records and whether the Mineral Resource estimate takes appropriate account of such data.</p> <p>The assumptions made regarding recovery of by-products.</p> <p>Estimation of deleterious elements or other non-grade variables of economic significance (eg sulphur for acid mine drainage characterisation).</p> <p>In the case of block model interpolation, the block size in relation to the average sample spacing and the search employed.</p> <p>Any assumptions behind modelling of selective mining units.</p> <p>Any assumptions about correlation between variables.</p> <p>Description of how the geological interpretation was used to control the resource estimates.</p>	<p>objects) were only used for their own estimation).</p> <p>Surpac software was used for the estimations.</p> <p>Top-cuts values were reviewed and applied if required.</p> <p>A grade dependent search was applied to all samples above 30g/t for the estimation of all resource areas. This was limited to a 25m radius influence due to the extreme grades of these holes. And grade dependant search was not used for estimation of Inferred resource part.</p> <p>The block dimensions used in all models were 10 m NS (along strike) by 10 m EW (across strike) by 5 m vertical with sub-cells of 2.5 m by 1.25 m by 1.25 m based on QKNA results and the drill spacing. Each block model was not rotated.</p> <p>No historical production records were available.</p> <p>No assumptions have been made regarding recovery of by-products.</p> <p>No estimation of deleterious elements was carried out. Only gold (Au) was interpolated into the block model.</p> <p>An orientated 'ellipsoid' search was used to select data and was based on parameters taken from the variography or the observed lode geometry. Three passes were used for each domain. The ranges for 3 passes are 25m, 50m, and 200m. The minimum samples for 3 passes are 4, 4 and 1. A maximum of 12 samples and maximum of 3 samples per hole were used for all 3 passes.</p>

Criteria	JORC Code explanation	Commentary
	<p>Discussion of basis for using or not using grade cutting or capping.</p> <p>The process of validation, the checking process used, the comparison of model data to drill hole data, and use of reconciliation data if available.</p>	<p>Selective mining units were not modelled in the Mineral Resource model. The block size used in the model was based on drill sample spacing and lode orientation.</p> <p>Only gold (Au) assay data was available, therefore correlation analysis was not possible.</p> <p>The deposit mineralisation was constrained by wireframes constructed using a 0.1 g/t Au cut-off grade in association with logged lithology codes. The wireframes were applied as hard boundaries in the estimate.</p> <p>Statistical analysis was carried out on data from all lodes based on the orientation and shape of the mineralisation.</p> <p>A three-step process was used to validate the model. A qualitative assessment was completed by slicing sections through the block model in positions coincident with drilling. A quantitative assessment of the estimate was completed by comparing the average Au grades of the composite file input against the Au block model output for all the resource objects. Validation of the model included detailed comparison of composite grades and block grades by northing and elevation. Validation plots showed good correlation between the composite grades and the block model grades.</p> <p>While some smoothing is noted within the grade estimates, SLR considers this appropriate for the style of mineralisation which displays a relatively high nugget, with good geology</p>

Criteria	JORC Code explanation	Commentary
		<p>continuity displayed. The validation indicated that the NN estimate showed reasonable variation on a global scale however this is considered to be not representative of the local variability with both the IDW and OK displaying smoothing which is considered appropriate and suitable.</p> <p>With additional infill drilling, SLR recommends that further high-grade domains be investigated along with the use of MIK or conditional simulation, which given the current drill spacing is not considered a suitable estimation methodology.</p>
Moisture	Whether the tonnages are estimated on a dry basis or with natural moisture, and the method of determination of the moisture content.	Tonnages and grades were estimated on a dry in situ basis. No moisture values were reviewed.
Cut-off parameters		<p>Mineral Resources are reported at a cut-off grade of 0.4 g/t Au above 300m depth (based on a pit shell) and 1.0 g/t Au below 300m for BST1, BDT1, BDT2, BDT3, BMT1 and BMT3. These cut-off grades were based on a gold price of US\$3,100/oz and estimated mining and processing costs and recoveries factors of similar projects in Côte d'Ivoire based on open pit and underground methods. A 300m depth constraint was applied based on pit optimisation completed with both indicated and inferred</p> <p>SLR has utilised the operating costs and recoveries along with the price noted above in determining the appropriate cut-off grade. Given the above analysis SLR considers both the open pit and material below the pit demonstrates</p>

Criteria	JORC Code explanation	Commentary
		reasonable prospects for eventual economic extraction, however, highlights that additional studies and drilling is required to confirm economic viability.
Mining factors or assumptions	Assumptions made regarding possible mining methods, minimum mining dimensions and internal (or, if applicable, external) mining dilution. It is always necessary as part of the process of determining reasonable prospects for eventual economic extraction to consider potential mining methods, however the assumptions made regarding mining methods and parameters when estimating Mineral Resources may not always be rigorous. Where this is the case, this should be reported with an explanation of the basis of the mining assumptions made.	SLR has assumed that the deposit could be mined using mostly open cut techniques with some possibility of underground mining.
Metallurgical factors or assumptions	The basis for assumptions or predictions regarding metallurgical amenability. It is always necessary as part of the process of determining reasonable prospects for eventual economic extraction to consider potential metallurgical methods, however the assumptions regarding metallurgical treatment processes and parameters made when reporting Mineral Resources may not always be rigorous. Where this is the case, this should be reported with an explanation of the basis of the metallurgical assumptions made.	The following conclusions are drawn from the metallurgical testwork thus far conducted on Boundiali Gold Project ore: Overall the ore can be classified as medium to moderate in hardness (pending further testwork and comminution modelling during next study phase): Ai indicates that the ore is not overly abrasive; CWi, BWi and SMC results indicate that the ore is of medium to moderate hardness; The SMC testwork indicates that the ore is likely to be amenable to single-stage crushing followed by SAG milling (SSAG) in closed circuit. It has a moderate to high proportion of gravity-recoverable gold for all domains and ore characteristics.

Criteria	JORC Code explanation	Commentary
		<p>The initial optimum conditions for the ore were investigated and found to be: Reasonably coarse primary grind size P80 of 106µm; Unlikely that leaching times in excess of 24 hrs would be necessary.</p> <p>The total gold recovery including gravity and leaching was between 95-99% at a Primary grind size P80 of 106µm. Gravity separation significantly reduced lime and cyanide consumptions.</p> <p>RECOMMENDATIONS</p> <p>The results to date are very promising, and further testwork is recommended to firm up the results to feasibility-study level. MIQM has recommended that the next phase of testwork include:</p> <p>More samples from all domains and areas within the possible mining pit for testwork to confirm/optimize/select the process flowsheet.</p> <p>Increase the total number of representative samples for testing comminution characteristics in order to better optimize the process flowsheet.</p> <p>Additional leach and gravity testwork on more samples at various grind sizes in order to optimize the gravity circuit and grind size .</p> <p>Process route modelling to find the optimum economic circuit for Boundiali.</p> <p>Testing of variability samples to ensure that the selected process route has the flexibility to treat all types of ore at the project.</p>
Environmental factors or assumptions	Assumptions made regarding possible waste and process residue disposal options. It is always necessary as part of the process of determining reasonable prospects for eventual economic extraction to consider the potential environmental impacts of	No assumptions have been made regarding environmental factors; however, it is noted that the BST1 deposit is in a classified forest area. SLR is aware that Aurum has negotiated an agreement to allow exploration and exploitation within this area. Further

Criteria	JORC Code explanation	Commentary																																																																	
	<p>the mining and processing operation. While at this stage the determination of potential environmental impacts, particularly for a greenfields project, may not always be well advanced, the status of early consideration of these potential environmental impacts should be reported. Where these aspects have not been considered this should be reported with an explanation of the environmental assumptions made.</p>	<p>studies and approvals will be required to undertake mining; however, this is not considered a material issue. Aurum will work to mitigate environmental impacts because of any exploration, future mining or mineral processing.</p> <p>As part of this estimate, SLR has not completed a detailed environmental review however is aware a study is underway. SLR has not been informed nor is aware of any issues with the licence and understands that the licence in which Exploration results and Mineral Resources are reported are in good standing.</p>																																																																	
Bulk density	<p>Whether assumed or determined. If assumed, the basis for the assumptions. If determined, the method used, whether wet or dry, the frequency of the measurements, the nature, size and representativeness of the samples.</p> <p>The bulk density for bulk material must have been measured by methods that adequately account for void spaces (vugs, porosity, etc), moisture and differences between rock and alteration zones within the deposit.</p> <p>Discuss assumptions for bulk density estimates used in the evaluation process of the different materials.</p>	<p>Significant density data was available for use which underpinned the averages applied for each weathering domain and resource area.</p> <p>Average density values were used for the direct assignment for each weathering domains</p> <table border="1"> <thead> <tr> <th>Area</th> <th>Type</th> <th>Sample number</th> <th>Mean</th> </tr> </thead> <tbody> <tr> <td rowspan="3">BST1</td> <td>BOCO</td> <td>-</td> <td>1.50</td> </tr> <tr> <td>TRAN</td> <td>-</td> <td>2.40</td> </tr> <tr> <td>FRESH</td> <td>-</td> <td>2.80</td> </tr> <tr> <td rowspan="3">BDT1</td> <td>BOCO</td> <td>994</td> <td>1.53</td> </tr> <tr> <td>TRAN</td> <td>259</td> <td>2.43</td> </tr> <tr> <td>FRESH</td> <td>5460</td> <td>2.75</td> </tr> <tr> <td rowspan="2">BDT2</td> <td>BOCO</td> <td>82</td> <td>1.52</td> </tr> <tr> <td>TRAN</td> <td>100</td> <td>2.56</td> </tr> <tr> <td rowspan="2">BDT3</td> <td>FRESH</td> <td>2550</td> <td>2.76</td> </tr> <tr> <td>BOCO</td> <td>130</td> <td>1.43</td> </tr> <tr> <td rowspan="3">BMT1</td> <td>TRAN</td> <td>44</td> <td>2.12</td> </tr> <tr> <td>FRESH</td> <td>523</td> <td>2.74</td> </tr> <tr> <td>BOCO</td> <td>470</td> <td>1.53</td> </tr> <tr> <td rowspan="3">BMT3</td> <td>TRAN</td> <td>237</td> <td>2.35</td> </tr> <tr> <td>FRESH</td> <td>2103</td> <td>2.73</td> </tr> <tr> <td>BOCO</td> <td>237</td> <td>1.51</td> </tr> <tr> <td rowspan="2"></td> <td>TRAN</td> <td>116</td> <td>2.45</td> </tr> <tr> <td>FRESH</td> <td>1067</td> <td>2.85</td> </tr> </tbody> </table>	Area	Type	Sample number	Mean	BST1	BOCO	-	1.50	TRAN	-	2.40	FRESH	-	2.80	BDT1	BOCO	994	1.53	TRAN	259	2.43	FRESH	5460	2.75	BDT2	BOCO	82	1.52	TRAN	100	2.56	BDT3	FRESH	2550	2.76	BOCO	130	1.43	BMT1	TRAN	44	2.12	FRESH	523	2.74	BOCO	470	1.53	BMT3	TRAN	237	2.35	FRESH	2103	2.73	BOCO	237	1.51		TRAN	116	2.45	FRESH	1067	2.85
Area	Type	Sample number	Mean																																																																
BST1	BOCO	-	1.50																																																																
	TRAN	-	2.40																																																																
	FRESH	-	2.80																																																																
BDT1	BOCO	994	1.53																																																																
	TRAN	259	2.43																																																																
	FRESH	5460	2.75																																																																
BDT2	BOCO	82	1.52																																																																
	TRAN	100	2.56																																																																
BDT3	FRESH	2550	2.76																																																																
	BOCO	130	1.43																																																																
BMT1	TRAN	44	2.12																																																																
	FRESH	523	2.74																																																																
	BOCO	470	1.53																																																																
BMT3	TRAN	237	2.35																																																																
	FRESH	2103	2.73																																																																
	BOCO	237	1.51																																																																
	TRAN	116	2.45																																																																
	FRESH	1067	2.85																																																																

Criteria	JORC Code explanation	Commentary
Classification	<p>The basis for the classification of the Mineral Resources into varying confidence categories.</p> <p>Whether appropriate account has been taken of all relevant factors (ie relative confidence in tonnage/grade estimations, reliability of input data, confidence in continuity of geology and metal values, quality, quantity and distribution of the data).</p>	<p>Mineral Resources were classified in accordance with the Australasian Code for the Reporting of Exploration Results, Mineral Resources and Ore Reserves (JORC, 2012). The Mineral Resource was classified as Indicated and Inferred Mineral Resource on the basis of data quality, sample spacing, and lode continuity.</p> <p>All the deposits both show good continuity of the main mineralised lodes along strike and down dip which allowed the drill hole intersections to be modelled into coherent, geologically robust wireframes within the drill spacing of 50m-100m by 100m with closer spacing of 50m by 50m or less within the core of the BST deposit. Relative consistency is evident in the thickness of the structures, along with the continuity of structure between sections. While there is good geological continuity along strike and down dip, there is evidence, and it is interpreted, that local variation of grade and thickness will occur between the current drill spacing arising from the boudin type structures resulting in discontinuous pods of mineralisation.</p> <p>Given the interpretation of further local grade variation with further drilling, within the good geological continuity, SLR considers the drill spacing at Boundiali to be appropriate for different classification levels based on the following criteria:</p> <ul style="list-style-type: none"> • Indicated Classification: A drill spacing of 50m by 50m or less is considered suitable for an Indicated classification in the

Criteria	JORC Code explanation	Commentary
	<p>Whether the result appropriately reflects the Competent Person's view of the deposit.</p>	<p>well informed areas of BST1, BDT1, and BDT2. This spacing provides good confidence in geological continuity and grade. This decision is supported by variogram ranges (specifically, 60% of the sill range) and visual confirmation of both structure and grade continuity. Several areas with even closer spacing (<25m) further support the consistency of the geology.</p> <ul style="list-style-type: none"> • Inferred Classification: For areas where drill spacing is greater than 50m by 50m (and up to 100m by 100m), this drill density is considered suitable for an Inferred classification. <p>Following active review and professional judgment, the Competent Person identified areas within the resource model as unclassified because they did not meet the standards for an Inferred classification. These zones, having been assigned a grade estimate, provide a guide for future drilling aimed at potentially upgrading them to Inferred Resources.</p> <p>To achieve a Measured resource classification, a higher drill density is required. SLR believes that additional drilling is needed to provide enough confidence in the local grade and metal distribution to meet the criteria for this classification.</p>
Audits or reviews	The results of any audits or reviews of Mineral Resource estimates.	Internal audits have been completed by SLR which verified the technical inputs, methodology, parameters and results of the estimate.

Criteria	JORC Code explanation	Commentary
<p>Discussion of relative accuracy/ confidence</p>	<p>Where appropriate a statement of the relative accuracy and confidence level in the Mineral Resource estimate using an approach or procedure deemed appropriate by the Competent Person. For example, the application of statistical or geostatistical procedures to quantify the relative accuracy of the resource within stated confidence limits, or, if such an approach is not deemed appropriate, a qualitative discussion of the factors that could affect the relative accuracy and confidence of the estimate.</p> <p>The statement should specify whether it relates to global or local estimates, and, if local, state the relevant tonnages, which should be relevant to technical and economic evaluation. Documentation should include assumptions made and the procedures used.</p> <p>These statements of relative accuracy and confidence of the estimate should be compared with production data, where available.</p>	<p>The Mineral Resource estimate has been reported with a moderate degree of confidence. The lode geometry and continuity has been interpreted to reflect the Mineral Resource classification. The data quality is good and the drill holes have detailed logs produced by qualified geologists. Recognised laboratories have been used for all analyses.</p> <p>The Mineral Resource statement relates to global estimates of tonnes and grade.</p> <p>No recorded mining activities have been undertaken therefore no reconciliation with production data could be conducted.</p>

For personal use only