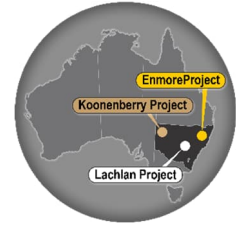


ASX ANNOUNCEMENT  
5 August 2025

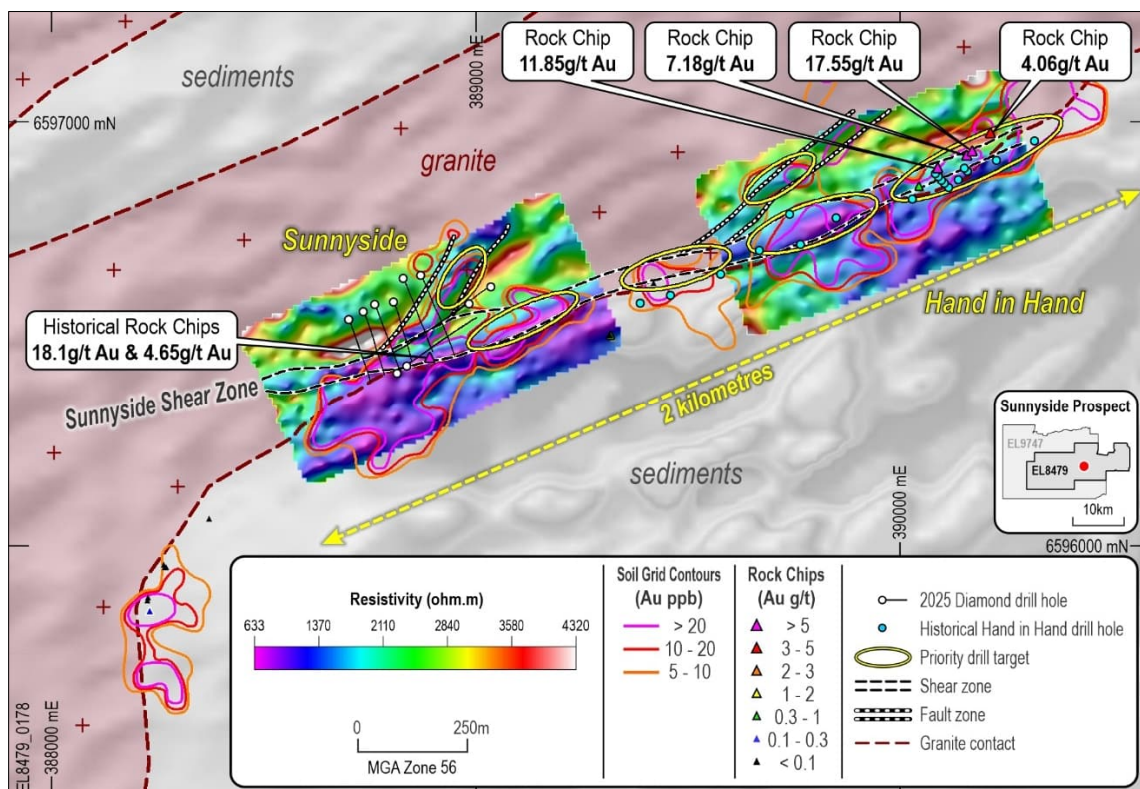


## KNB identifies priority drill targets along Sunnyside Shear Zone in IP Geophysics at Enmore Project, NSW

### HIGHLIGHTS

Koonenberry Gold has completed IP Geophysics at the Enmore Gold Project in northeast NSW. Highlights include:

- **Sunnyside Shear Zone successfully mapped by Gradient Array Induced Polarisation (GAIP).**
- Results show the Sunnyside Shear Zone as a linear resistivity low within the granite, which is the preferred host rock to the extensive gold mineralisation intersected at Sunnyside.
- **The resistivity lows are interpreted as fluid pathways associated with sericite-iron carbonate alteration. At Sunnyside, these alteration phases are associated with gold mineralisation.**
- The Sunnyside Shear Zone is interpreted to pinch and swell along the +2km strike length, potentially providing dilational sites for gold mineralisation where the structure opens up.
- **Six high-priority drill targets identified along first and second order structures with coincident gold + arsenic in soil anomalism.**
- With more than 30km of prospective shear zones on the Enmore Project, GAIP is useful for mapping first and second order structures, considered **important fluid pathways for gold mineralisation**. This can also assist with ranking targets identified at the district scale.
- KNB is well funded to continue exploration across its projects with **\$8.7M cash**.<sup>1</sup>
- **Planning for +10,000m Phase II drilling at Enmore is progressing – anticipated commencement in late August weather permitting.**



**Figure 1.** Sunnyside to Hand in Hand Gradient Array Induced Polarisation (GAIP) with interpreted Sunnyside Shear Zone (first order structure) and tangential faults (second order structures) and gold in soil anomalies and priority drill targets. **Drill targets are defined by coincident structure (Sunnyside Shear Zone, or secondary structures and dilational sites), geochemistry (gold and arsenic in soils), host rock (preferred granite host) and resistivity low (interpreted alteration).**

<sup>1</sup> Cash at 30/06/2025. Refer ASX Announcements dated 21/07/2025.

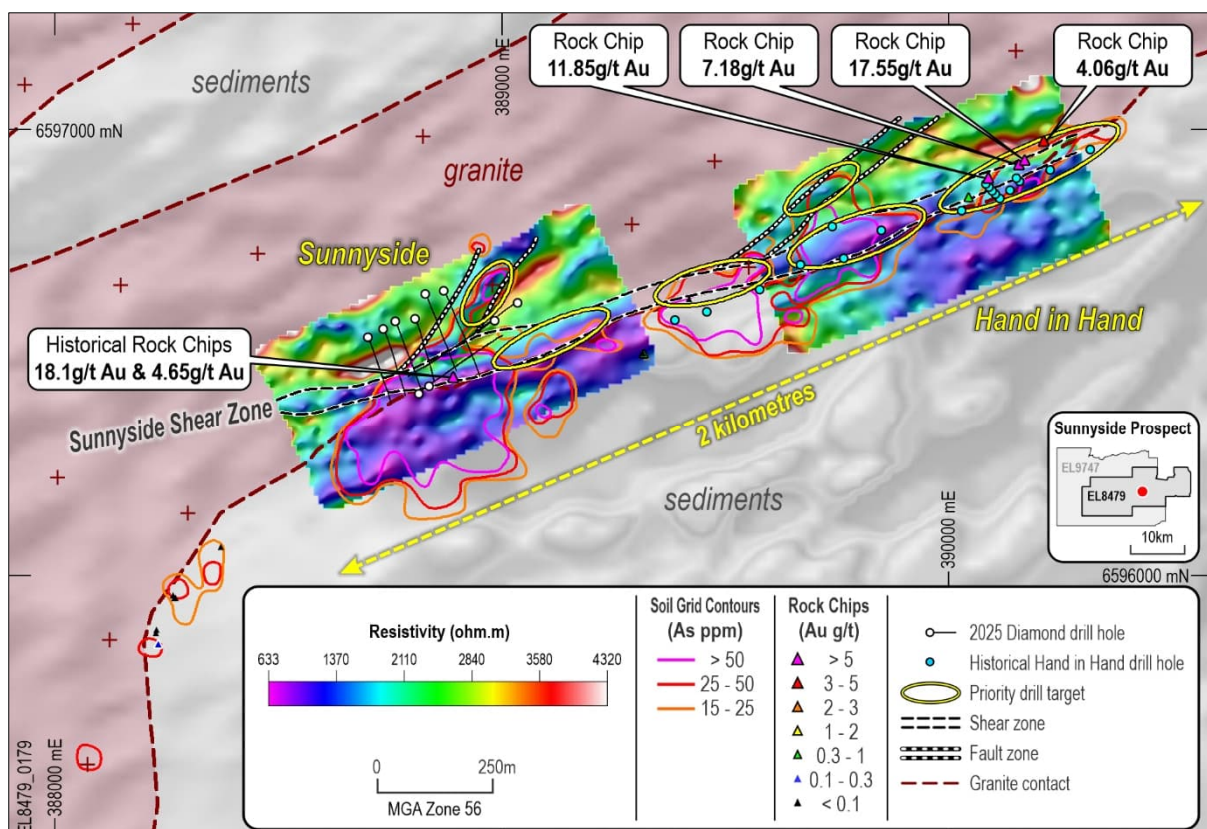
For personal use only

KNB Managing Director Dan Power commented:

“We have completed an electrical geophysical survey at Enmore, which has added to our understanding of the structures that are controlling mineralisation at Sunnyside. Extrapolating away from known mineralisation at Sunnyside we have identified **several priority targets** that are lined up along the Sunnyside Shear Zone. These occur within the preferred granite host rock and are supported by robust gold and arsenic anomalies in soil geochemistry.

This data highlights prospectivity to the east of Sunnyside where we see the potential for extensions and repetitions to the gold mineralisation. **A +2km long prospective zone is shown along the Sunnyside Shear Zone at the contact between the granite and sediments with coincident gold and arsenic in soils and high-grade rock chip results highlighting six priority drill targets which remain untested.**

Our first drill program at Sunnyside delivered some exceptional results which point to a significant emerging gold discovery story with standalone bulk tonnage as well as high-grade gold potential. Encouraged by this success we are preparing for **an additional +10,000m of extensional and discovery drilling**. This second phase of drilling is **fully funded by our \$8.7M cash position and is scheduled to commence in late August** if weather conditions permit.”



**Figure 2.** Sunnyside to Hand in Hand Gradient Array Induced Polarisation (GAIP) with interpreted Sunnyside Shear Zone (first order structure) and tangential faults (second order structures), arsenic in soil anomalies and priority drill targets. **Drill targets are defined by coincident structure (Sunnyside Shear Zone, or secondary structures and dilational sites), geochemistry (gold and arsenic in soils), host rock (preferred granite host) and resistivity low (interpreted alteration).**

## DISCUSSION

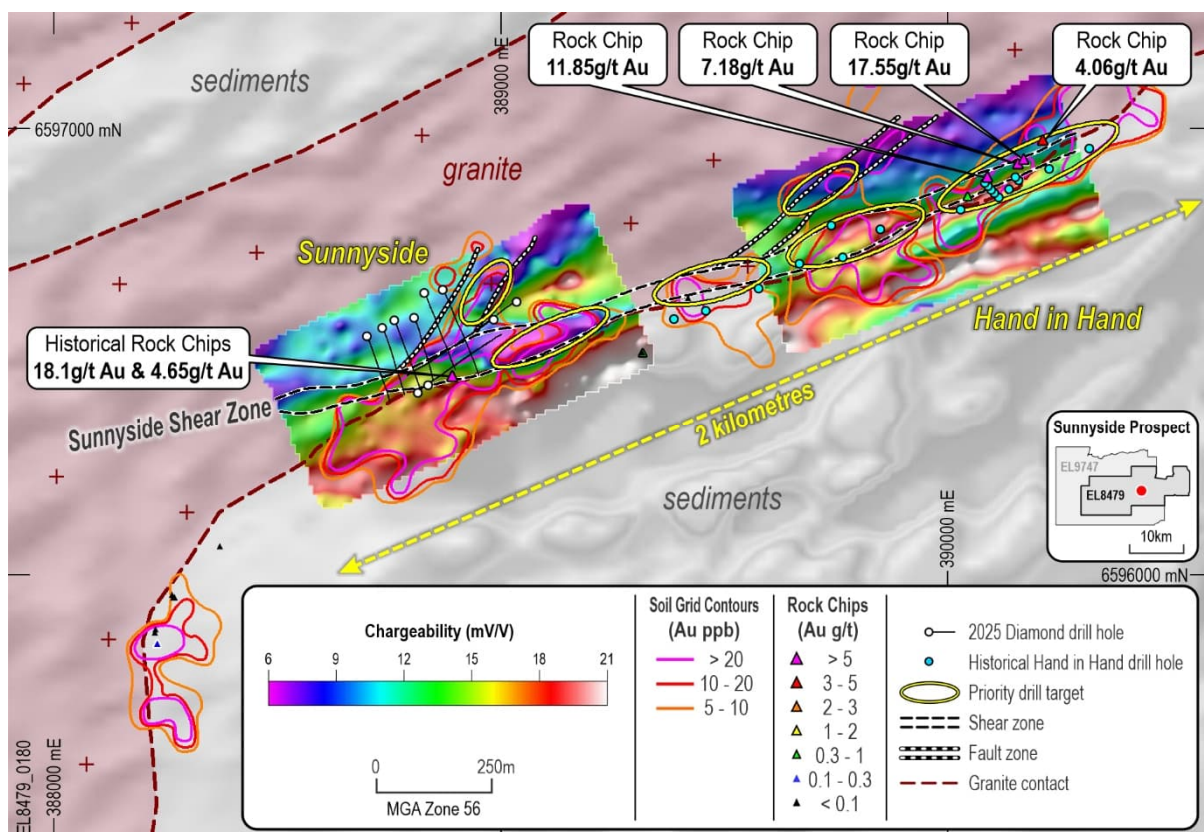
Koonenberry planned Gradient Array IP (GAIP) orientation survey at Sunnyside on an initial 400m x 400m area covering the main area of drilling. The aim was to identify if it could map any chargeable features from sulphides observed in the drilling and/or resistivity contrast to map changes in geology and alteration. The survey was completed with 400m line lengths using a 20m dipole spacing and 50m line spacing.

From the orientation survey it was clear that the resistivity was mapping the shear structures, geology and other cross-cutting structures with a significant level of detail. Encouraged by preliminary results, the survey at Sunnyside was extended towards the east and then an additional GAIP survey was also planned and completed at Hand in Hand. The chargeability however did not map the sulphides in granite as well as hoped for, interpreted to be due to the influence of the chargeable sediments masking the response.

Four targeted Dipole-Dipole IP (DDIP) lines to produce chargeability and resistivity depth sections were also completed. These utilised 1.2km lines with 50m electrode spacing, with three lines at Sunnyside and one at Hand in Hand.

The first line at Sunnyside was completed along the trace of drill hole 25ENDD006 to see if it reflected observed sulphide related to gold mineralisation and the geology contrast of the granite-sediment contact, but the results did not delineate these features. The next line was completed 200m ENE of the first line and a third line 300m WSW of the first line in undrilled areas at depth. Results indicate the DDIP method is ineffective for drill targeting at Sunnyside.

With more than 30km of prospective shear zones on the project GAIP may be a useful tool for mapping first and second order structures which are considered important fluid pathways for gold.



**Figure 3.** Sunnyside to Hand in Hand Gradient Array Induced Polarisation (GAIP) with interpreted Sunnyside Shear Zone (first order structure) and tangential faults (second order structures), arsenic in soil anomalies and priority drill targets. **Drill targets are defined by coincident structure (Sunnyside Shear Zone, or secondary structures and dilational sites), geochemistry (gold and arsenic in soils), host rock (preferred granite host) and resistivity low (interpreted alteration).**

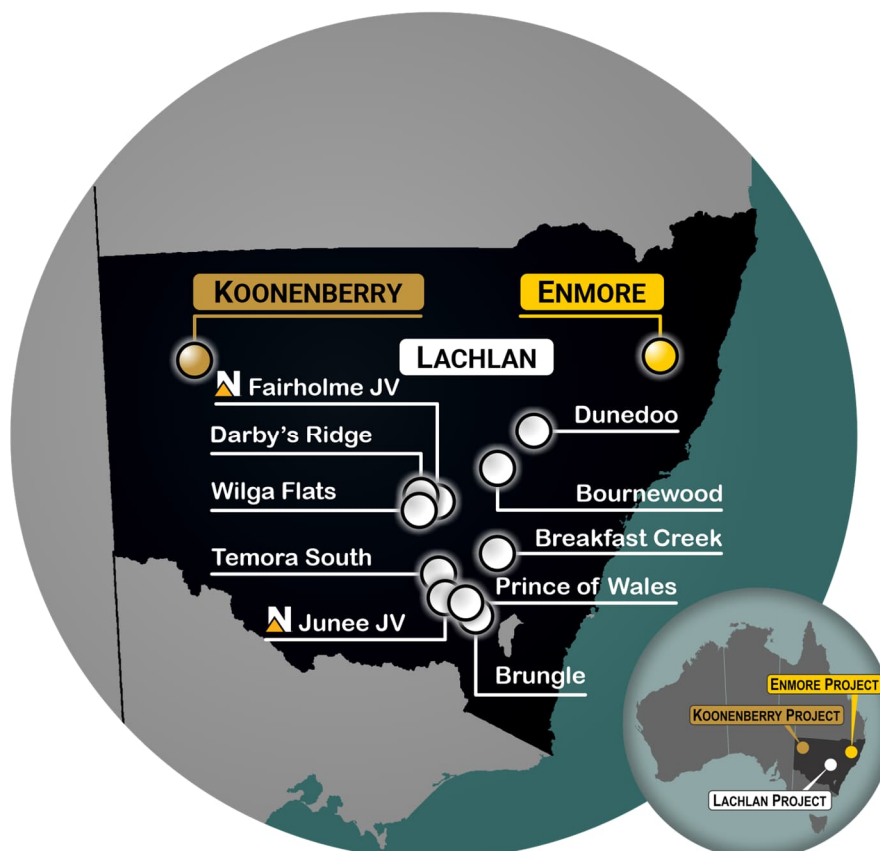
## FORWARD PROGRAM

Koonenberry Gold has successfully completed its maiden diamond drill program at Enmore where drilling has intersected extensive intervals of gold mineralisation from surface as well as high-grade gold intervals at depth. Gold mineralisation has been intersected over an estimated ~75m true width, 300m vertical depth extent and ~260m strike extent in results to date. The mineralisation remains open up-dip, down-dip and along strike to the NE and SW in the preferred granite host rock along the Sunnyside Shear Zone.

Results from the Phase I drilling program are being used to design +10,000m of follow-up drilling to test the continuity and extensions to mineralisation at Sunnyside as well as discovery and growth drilling along the Sunnyside Shear Zone, particularly to the east where the Company has identified an ~2km strike length of highly prospective granite associated with gold and arsenic soil anomalies with high-grade rock chips and geophysical features consistent with mineralisation identified at Sunnyside. Wide-spaced, relatively shallow historical drilling in this area contain anomalous gold and add further to the prospectivity of this zone.

Additional soil sampling has also been conducted along the Borah Fault, a parallel fault to the Sunnyside Fault with very encouraging results that will require drill testing.

Koonenberry Gold has a diverse portfolio of high-quality gold and copper projects in highly prospective areas of NSW and plans to prioritise programs to maximise value for its shareholders. The Company looks forward to providing regular exploration updates as this work progresses.



**This ASX release was authorised by the Board of the Company.**

For more information please contact:

**Dan Power**  
 Managing Director  
 +61 8 6245 9869

[info@koonenberrygold.com.au](mailto:info@koonenberrygold.com.au)

**Nathan Ryan**  
 Investor Relations  
 +61 420 582 887

[nathan.ryan@nwrcommunications.com.au](mailto:nathan.ryan@nwrcommunications.com.au)

For further information regarding the Company and its projects please visit [www.koonenberrygold.com.au](http://www.koonenberrygold.com.au)

-ENDS-

For personal use only

## SUNNYSIDE PROSPECT BACKGROUND

The Sunnyside Prospect occurs along the Sunnyside Shear Zone, which is associated with the development of a penetrative, strongly foliated, mylonitic fabric near the contact between the Permo-Carboniferous (302Ma) porphyritic quartz monzogranite (locally called granite for simplicity) to the north and sedimentary rocks of the Girkakool Beds to the south. Deformation of the granite has occurred at biotite-grade metamorphic conditions. The prospect has seen a modest amount of near-surface historical exploration, with deeper drilling only conducted in recent years. This has resulted in the discovery of significant gold mineralisation over extensive widths as well as high grade zones at depth.

Gold mineralisation is orogenic epizonal in character and is structurally controlled along the NE-SW trending shear zone and in later quartz and iron carbonate veins which can crosscut the shear zone at high angles to the shear fabric. The shear zone dissects and locally fault bounds the granite intrusions.

Mineralisation is largely hosted within the granite and appears to be long-lived and multi staged with gold occurring in silicified breccias, quartz stockworks, sulphidic veins, iron carbonate vein arrays and narrow quartz veins. An early gold event is associated with strong shearing, pervasive silicification and sericitisation with sulphides emplaced along the NE-SW trending shear zone. Multiple overprinting events have introduced gold in iron carbonate vein arrays and quartz veins developed within extensional fracture zones which can be tangential or oblique to the main structure.

This structural setting and paragenesis may be similar to the 1.7Moz Hillgrove deposit, located just 20km to the north, where the main mineralisation is hosted within a conjugate vein array between the Hillgrove and Chandler fault systems rather than along the main shear.<sup>2</sup> For the most part, drilling at Sunnyside has been conducted orthogonal to the main shear zone rather than targeting high-grade shoots oblique to those structures. It is therefore possible that drilling has missed the high-grade shoots.

Discrete mineralised zones are generally defined by intense alteration including a mineral assemblage of sericite, iron carbonate, potassium feldspar (adularia), quartz (crystalline and drusy), free gold, pyrite, arsenian pyrite, minor arsenopyrite and local traces of chalcopyrite, sphalerite, galena and tetrahedrite. The occurrence of adularia is considered to define hydrothermal fluid chemistry and process (ie. potassium bearing) rather than defining a classification of mineral system other than orogenic-type.

Gold mineralisation is typically associated with pyrite, arsenian pyrite and arsenopyrite. Arsenic assays tend to have a linear correlation with gold values except for late stage high-grade drusy quartz ±adularia veins, where there may be no sulphides and therefore low arsenic. It is unclear how much gold is in solid solution with the sulphides. Other sulphides are not common at hand specimen scale, although antimony is anomalous in surface soil samples.

The current drill program has confirmed that mineralisation extends away from the granite-sediment contact for ~75m in true width, ~260m along strike and from surface to over 300m vertically. Gold mineralisation remains open in multiple directions, including along the Sunnyside Shear Zone, with indications that grade may be increasing with depth.

---

<sup>2</sup> Downes, P. M., 2017

## ABOUT KOONENBERRY GOLD

Koonenberry Gold Ltd is a minerals explorer aiming to create value for shareholders through the discovery of Gold and Copper across its diverse portfolio of highly prospective and strategically located projects. These projects cover an area of 4,360km<sup>2</sup> making it one of the most significant exploration portfolios in NSW. The Company's main focus is the Enmore Gold Project, which is at an exciting discovery phase with drilling returning broad intervals of gold mineralisation extending from surface as well as high-grade gold zones at depth.

100% Owned Projects	
<b>Au Enmore</b> (EL8479 & EL9747; 302km <sup>2</sup> ) <ul style="list-style-type: none"> <li>20km Sth of 1.7Moz Hillgrove Au Mine</li> <li><b>174m @ 1.83g/t Au from 0m</b> (OSSRC06)</li> <li><b>172m @ 2.07g/t Au from 171m</b> (25ENDD02)</li> <li>Emerging gold discovery</li> </ul>	<b>Cu/Au Breakfast Creek</b> (EL9313; 392km <sup>2</sup> ) <ul style="list-style-type: none"> <li>55km Sth of Cadia Cu-Au Mine</li> <li><b>+6km Cu-Au soil anomaly</b></li> <li><b>7.02g/t Au, 1.96% Cu; 3.4g/t Au, 1.1% Cu; 0.5g/t Au, 18.5% Cu</b> rocks</li> </ul>
<b>Au Prince of Wales</b> (EL9533; 11km <sup>2</sup> ) <ul style="list-style-type: none"> <li>Historical shafts and workings (170m deep)</li> <li><b>4.0km long structural trend</b></li> <li>Very limited drilling</li> </ul>	<b>Cu/Au Bournewood</b> (EL9137; 43km <sup>2</sup> ) <ul style="list-style-type: none"> <li>40km SW of 7.3Moz Boda-Kaiser deposit</li> <li><b>13.3g/t Au and 5.7% Cu rock chips</b></li> <li>Numerous historical workings</li> </ul>
<b>Au Wilga</b> (EL9272; 272km <sup>2</sup> ) <ul style="list-style-type: none"> <li>20km NNW of 13Moz Cowal Au Mine</li> <li><b>Gold mineralisation at EL Boundary</b></li> <li>+4km Carbonate-Base Metal (CBM) trend</li> <li>Untested by drilling</li> </ul>	<b>Cu Brungle</b> (EL9532; 157km <sup>2</sup> ) <ul style="list-style-type: none"> <li>Significant scale BHP stream sediment Cu</li> <li><b>8.43g/t Au &amp; 1.37% Cu rock chips</b></li> <li>Large ovoid shaped magnetic anomalies</li> </ul>
<b>Au Temora South</b> (EL8895; 110km <sup>2</sup> ) <ul style="list-style-type: none"> <li>16km Sth of 1.4Moz Gidginbung Au-Cu Mine</li> <li><b>12.7g/t Au, 4.98g/t Au, 1.65g/t Au rocks</b></li> <li>4m @ 1.93g/t Au to EOH (roadside RAB)</li> </ul>	<b>Cu Darby's Ridge</b> (EL8876; 72km <sup>2</sup> ) <ul style="list-style-type: none"> <li>Intrusion related Cu/Au</li> <li>Large &gt;2km Au-Cu Air Core anomaly</li> <li>Bullseye mag high + chargeability anomalies</li> </ul>
<b>Au Dunedoo</b> (EL9138; 96km <sup>2</sup> ) <ul style="list-style-type: none"> <li>65km Nth of 491Moz Ag Eq Bowdens deposit</li> <li>+8km Au soil anomaly (&gt;10ppb Au)</li> <li><b>1.24g/t Au, 12g/t Ag rock chip</b></li> <li>Untested by drilling</li> </ul>	<b>Au/Cu Koonenberry</b> (16 ELs; 2,478km <sup>2</sup> ) <ul style="list-style-type: none"> <li>Highly prospective and underexplored</li> <li>Abundant evidence for Au (200km<sup>2</sup> nuggets)</li> <li><b>Pipeline of projects with 34km Au soils</b></li> <li>Multi million ounce Au potential</li> </ul>

Farm-in and Joint Venture Projects (Newmont Exploration Manager)	
<b>Cu/Au Junee JV</b> (EL8470; 256km <sup>2</sup> ) <ul style="list-style-type: none"> <li>Unusually fertile segment of Macquarie Arc <sup>3</sup></li> <li>25x Targets; 4x alkalic porphyry systems</li> <li><b>224m @ 0.19% Cu, 0.2g/t Au from 172m</b></li> <li>\$23.9M spent to date</li> </ul>	<b>Cu Fairholme JV</b> (EL9467; 169km <sup>2</sup> ) <ul style="list-style-type: none"> <li>Large igneous complex (Phase 4)</li> <li>Cover of only 36-150m</li> <li><b>Northparkes-style "doughnut" mag features</b></li> <li>Cu/Au in Air Core (&gt;0.1g/t Au, &gt;500ppm Cu)</li> </ul>

Capital Structure (ASX:KNB)			
<b>1,025M</b> Shares on issue <small>ASX:KNB</small>	<b>~48.4M</b> Market Cap <small>As at 31/07/2025</small>	<b>\$8.7M</b> Cash <small>As at 01/07/2025</small>	<b>~47%</b> Top 20



<sup>3</sup> Alan Wilson, 2022.

## TENEMENTS

### Koonenberry Project

Licence Number	Area (km <sup>2</sup> )*	Location	Title Holder	Equity Interest
EL6803	156.22	NSW	Lasseter Gold Pty Ltd	100%
EL6854	59.02	NSW	Lasseter Gold Pty Ltd	100%
EL7635	23.60	NSW	Lasseter Gold Pty Ltd	100%
EL7651	47.20	NSW	Lasseter Gold Pty Ltd	100%
EL8245	88.50	NSW	Lasseter Gold Pty Ltd	100%
EL8705	5.90	NSW	Lasseter Gold Pty Ltd	100%
EL8706	295.37	NSW	Lasseter Gold Pty Ltd	100%
EL8819	168.36	NSW	Lasseter Gold Pty Ltd	100%
EL8918	162.64	NSW	Lasseter Gold Pty Ltd	100%
EL8919	277.25	NSW	Lasseter Gold Pty Ltd	100%
EL8949	23.62	NSW	Lasseter Gold Pty Ltd	100%
EL8950	32.47	NSW	Lasseter Gold Pty Ltd	100%
EL9491	372.16	NSW	Lasseter Gold Pty Ltd	100%
EL9492	321.66	NSW	Lasseter Gold Pty Ltd	100%
EL9493	26.22	NSW	Lasseter Gold Pty Ltd	100%
EL9225	417.70	NSW	Gilmore Metals Pty Ltd	100%

**Table 1.** Koonenberry Gold's 100% owned subsidiaries Lasseter Gold Pty Ltd and Gilmore Metals Pty Ltd own a 100% interest in sixteen (16) granted tenements making up the Koonenberry Gold Project.

\*Area is calculated from the ellipsoid, not planimetric.

### Enmore Gold Project

Licence Number	Name	Area (km <sup>2</sup> )*	Location	Title Holder	Equity Interest
EL8479	Enmore	134.22	NSW	Enmore Gold Pty Ltd	100%
EL9747	Enmore Regional	167.72	NSW	Enmore Gold Pty Ltd	100%

**Table 2.** Koonenberry Gold's 100% interest in the Enmore Gold Project.

### Lachlan Project

Licence Number	Name	Area (km <sup>2</sup> )*	Location	Title Holder	Equity Interest	Conditions
EL8895	Temora South	110.35	NSW	Gilmore Metals Pty Ltd	100%	
EL9313	Breakfast Creek	392.25	NSW	Gilmore Metals Pty Ltd	100%	
EL9533	Gundagai	11.25	NSW	Gilmore Metals Pty Ltd	100%	
EL9532	Brungle	156.92	NSW	Gilmore Metals Pty Ltd	100%	
EL9138	Dunedoo	96.03	NSW	Gilmore Metals Pty Ltd	100%	
EL8876	Darby's Ridge	71.83	NSW	Gilmore Metals Pty Ltd	100%	
EL9137	Bournewood	43.35	NSW	Gilmore Metals Pty Ltd	100%	0.5% NSR
EL9272	Wilga Flats	272.42	NSW	Gilmore Metals Pty Ltd	100%	0.5% NSR
EL9467	Fairholme	169.43	NSW	Gilmore Metals Pty Ltd	51%	
EL8470	June	256.29	NSW	Newmont Exploration Pty Ltd	20%	

**Table 3.** Gilmore Metals Pty. Ltd. owns a 100% interest in eight (8) granted tenements as set out above. Newmont Exploration Pty Ltd has earned an 80% interest in the June project (EL8470) and is currently in the earn in phase through a farm-in and joint venture agreement on the Fairholme project (EL9467). In addition, Newmont Exploration Pty Ltd holds a 0.5% NSR on the Bournewood (EL9137) and Wilga Flat (EL9272) Projects. Koonenberry Gold owns 100% of Gilmore Metals Pty. Ltd.

## REFERENCES

- 17/10/2024 (ASX:KNB). Transformational acquisition of exciting NSW Au and CuAu portfolio.
  - 29/11/2024 (ASX:KNB). Koonenberry Gold completes acquisition of Enmore Gold and Lachlan Projects in NSW.
  - 24/01/2025 (ASX:KNB). Quarterly Report for the period ending 31 December 2024.
  - 11/02/2025 (ASX:KNB). KNB commences drilling at Enmore Gold Project.
  - 13/02/2025 (ASX:KNB). Placement to accelerate Exploration at Enmore & Lachlan.
  - 19/02/2025 (ASX:KNB). Multiple zones of visible gold in first drill hole at Enmore.
  - 25/02/2025 (ASX:KNB). KNB expands Enmore Gold Project, NSW securing gold-antimony targets.
  - 26/02/2025 (ASX:KNB). KNB intersects visible gold in second drill hole at Enmore.
  - 17/03/2025 (ASX:KNB). More gold zones identified at Enmore Gold Project, NSW.
  - 02/04/2025 (ASX:KNB). KNB returns 170m @ 1.75g/t gold including 18.3m at 9.95g/t gold from first drillhole
  - 14/04/2025 (ASX:KNB). KNB returns 172.9m @ 2.07g/t gold including 25m at 5.23g/t gold from second drillhole
  - 16/04/2025 (ASX:KNB). Quarterly Report for the period ending 31 March 2025.
  - 23/04/2025 (ASX:KNB). KNB intersects multiple zones of visible gold in fifth drill hole at Enmore.
  - 29/04/2025 (ASX:KNB). Enmore third hole returns 102m @ 1.10g/t gold including 9.7m at 3.57g/t gold.
  - 30/04/2025 (ASX:KNB). KNB intersects multiple zones of visible gold in sixth drill hole at Enmore.
  - 13/05/2025 (ASX:KNB). KNB expands Sunnyside gold system to more than 230m strike.
  - 20/05/2025 (ASX:KNB). KNB returns 149.5m at 0.94g/t gold from fourth drillhole at Enmore Project.
  - 22/05/2025 (ASX:KNB). Domestic and international institutional placement to accelerate exploration plans including +10,000m of drilling at Enmore.
  - 06/06/2025 (ASX:KNB). KNB returns 150m at 0.71g/t gold from fifth drillhole at Enmore.
  - 23/06/2025 (ASX:KNB). KNB returns 80.5m at 1.45g/t gold from sixth drillhole at Enmore.
  - 24/06/2025 (ASX:KNB). KNB extends Sunnyside Prospect by 1.6km to over 2km strike potential.
  - 27/06/2025 (ASX:KNB). Newmont completes fully-funded drilling at Junee and Fairholme JV Projects.
  - 21/07/2025 (ASX:KNB). Quarterly Report for the period ending 30 June 2025.
  - 22/07/2025 (ASX:KNB). KNB identifies target on parallel shear zone to Sunnyside at Enmore Project.
  - 04/08/2025 (ASX:KNB). KNB extends mineralised zone to over 260m strike potential and highlights depth and strike potential.
- 
- Banks, M., 2010. Enmore Gold Project, NSW, Australia. Technical review of geology, mineralisation and potential for Olympus Pacific Minerals inc.
  - Coote, A., 2025. Petrologic studies of diamond core from the Sunnyside Prospect, Enmore Project, NE New South Wales. Internal report for Koonenberry Gold.
  - Davis, B., 2025. Enmore Gold Project – Review of geology and first-pass assessment of structural geological controls to architecture hosting mineralisation at the Sunnyside Prospect. Internal report for Koonenberry Gold.
  - Downes, P. M., 2017. A mineral system model for orogenic Au and Au-Sb deposits in the southern New England.
  - Phillips, G. N. (Ed), 2017. Australian Ore Deposits (The Australasian Institute of Mining and Metallurgy: Melbourne).
  - Wilson, A., 2022. GeoAqua Consultants Ltd, Internal Report for Gilmore Metals.
  - 05/08/2024 (ASX:LRV). Hillgrove Gold-Antimony Project Pre-Feasibility Study including Maiden Ore Reserve.

### **Competent Persons Statement**

*The information in this announcement that relates to Exploration Results is based on information compiled under the supervision of Mr Paul Wittwer, who holds a BSc Geology (Hons.), is a Member of the Australian Institute of Geoscientists (AIG) and the Australian Institute of Mining and Metallurgy (AusIMM) and is the Exploration Manager of Koonenberry Gold Limited. Mr Wittwer has sufficient experience that is relevant to the style of mineralisation and type of deposit under consideration and to the activity which he is undertaking to qualify as a Competent Person as defined in the 2012 Edition of the 'Australasian Code for Reporting Exploration Results, Mineral Resources and Ore Reserves.' Mr Wittwer consents to the inclusion in this report of the matter based on his information in the form and context in which it appears. Where reference is made to previous announcements of exploration results in this announcement concerning the Company's projects, the Company confirms that it is not aware of any new information or data that materially affects the information and results included in those announcements. The information in this announcement that relates to the previous exploration results have been cross referenced to the original announcement or are from the announcements listed in the references table.*

### **Forward looking statements**

*This announcement may include forward looking statements and opinion. Often, but not always, forward looking statements can be identified by the use of forward looking words such as "may", "will", "expect" "intend", "plan", "estimate", "anticipate", "continue", "outlook" and "guidance" or other similar words and may include, without limitation, statements regarding plans, strategies and objectives of management, anticipated production or construction commencement dates and expected costs or production outputs. Forward looking statements are based on Koonenberry and its Management's good faith assumptions relating to the financial, market, regulatory and other relevant environments that will exist and affect Koonenberry's business and operations in future. Koonenberry does not give any assurance that the assumptions on which forward looking statements are based will prove to be correct, or that Koonenberry's business or operations will not be affected in any material manner by these or other factors not foreseen or foreseeable by Koonenberry or Management or beyond Koonenberry's control. Although Koonenberry attempts and has attempted to identify factors that would cause actual actions, events or results to differ materially from those disclosed in forward looking statements, there may be other factors that could cause actual results, performance, achievements or events not to be as anticipated, estimated or intended, and many events are beyond the reasonable control of Koonenberry. Accordingly, readers are cautioned not to place undue reliance on forward looking statements. Forward looking statements in these materials speak only at the date of issue. Subject to any continuing obligations under applicable law in providing this information Koonenberry does not undertake any obligation to publicly update or revise any of the forward-looking statements or to advise of any changes in events, conditions, or circumstances on which any such statement is based.*

### **Cautionary statement on visual estimates of mineralisation**

*Any references in this announcement to visual results are from visual estimates by qualified geologists. Laboratory assays are required for representative estimates of quantifiable elemental values. Visual estimates of mineral abundance should never be considered a proxy or substitute for laboratory analyses where concentrations or grades are the factor of principal economic interest. Visual estimates also potentially provide no information regarding impurities or deleterious physical properties relevant to valuations.*

### **Proximate statements**

*This announcement may contain references to Mineral Resources, mines and exploration projects of other parties either nearby or proximate to Koonenberry Gold's projects and/or references that may have topographical or geological similarities to Koonenberry Gold's projects, the Enmore Gold project and / or Lachlan projects. It is important to note that such discoveries or geological similarities do not in any way guarantee that the Company will have any success at all or similar successes in delineating a Mineral Resource on any of Koonenberry Gold's projects, the Enmore Gold project and / or Lachlan projects.*

**APPENDIX 1. JORC CODE TABLE 1 Checklist of Assessment and Reporting Criteria  
- Enmore Gold Project (EL 8479)**
**Section 1: Sampling Techniques and Data**

Criteria	JORC Code explanation	Commentary
<b>Sampling techniques</b>	<ul style="list-style-type: none"> <li>Nature and quality of sampling (e.g. cut channels, random chips, or specific specialised industry standard measurement tools appropriate to the minerals under investigation, such as down hole gamma sondes, or handheld XRF instruments, etc). These examples should not be taken as limiting the broad meaning of sampling.</li> </ul>	IP Survey <ul style="list-style-type: none"> <li>Data was acquired and processed by Fender Geophysics Pty Ltd.</li> <li>A Gradient Array IP (GAIP) survey was completed with 400m line lengths using a 20m dipole spacing and 50m line spacing.</li> <li>Four targeted Dipole-Dipole IP (DDIP) lines were completed with 50m electrode spacing.</li> <li>A GDD RX-32 16 Channel Receiver and GDD TxII IP Transmitter combination was utilised to collect resistivity and IP data.</li> </ul>
	<ul style="list-style-type: none"> <li>Include reference to measures taken to ensure sample representivity and the appropriate calibration of any measurement tools or systems used.</li> </ul>	<ul style="list-style-type: none"> <li>IP data was verified daily by the Fender Geophysicist and reprocessed by an independent Geophysicist.</li> </ul>
	<ul style="list-style-type: none"> <li>Aspects of the determination of mineralisation that are Material to the Public Report.</li> </ul>	<ul style="list-style-type: none"> <li>IP survey results have been used to inform the determination of mineralisation at an early stage of exploration.</li> </ul>
	<ul style="list-style-type: none"> <li>In cases where 'industry standard' work has been done this would be relatively simple (e.g. 'reverse circulation drilling was used to obtain 1 m samples from which 3 kg was pulverised to produce a 30 g charge for fire assay'). In other cases more explanation may be required, such as where there is coarse gold that has inherent sampling problems. Unusual commodities or mineralisation types (e.g. submarine nodules) may warrant disclosure of detailed information.</li> </ul>	<ul style="list-style-type: none"> <li>Industry standard IP survey procedures were completed.</li> </ul>
<b>Drilling techniques</b>	<ul style="list-style-type: none"> <li>Drill type (e.g. core, reverse circulation, open-hole hammer, rotary air blast, auger, Bangka, sonic, etc) and details (e.g. core diameter, triple or standard tube, depth of diamond tails, face-sampling bit or other type, whether core is oriented and if so, by what method, etc).</li> </ul>	<ul style="list-style-type: none"> <li>No new drilling results are reported in this release.</li> </ul>
<b>Drill sample recovery</b>	<ul style="list-style-type: none"> <li>Method of recording and assessing core and chip sample recoveries and results assessed.</li> </ul>	<ul style="list-style-type: none"> <li>No new drilling results are reported in this release.</li> </ul>
	<ul style="list-style-type: none"> <li>Measures taken to maximise sample recovery and ensure representative nature of the samples.</li> </ul>	<ul style="list-style-type: none"> <li>No new drilling results are reported in this release.</li> </ul>
	<ul style="list-style-type: none"> <li>Whether a relationship exists between sample recovery and grade and whether sample bias may have occurred due to preferential loss/gain of fine/coarse material.</li> </ul>	<ul style="list-style-type: none"> <li>No new drilling results are reported in this release.</li> </ul>
<b>Logging</b>	<ul style="list-style-type: none"> <li>Whether core and chip samples have been geologically and geotechnically logged to a level of detail to support appropriate Mineral Resource</li> </ul>	<ul style="list-style-type: none"> <li>No new drilling results are reported in this release.</li> </ul>

Criteria	JORC Code explanation	Commentary
	<p><i>estimation, mining studies and metallurgical studies.</i></p> <ul style="list-style-type: none"> <li>• <i>Whether logging is qualitative or quantitative in nature. Core (or costean, channel, etc) photography.</i></li> <li>• <i>The total length and percentage of the relevant intersections logged.</i></li> </ul>	<ul style="list-style-type: none"> <li>• No new drilling results are reported in this release.</li> <li>• No new drilling results are reported in this release.</li> </ul>
<b>Sub-sampling techniques and sample preparation</b>	<ul style="list-style-type: none"> <li>• <i>If core, whether cut or sawn and whether quarter, half or all core taken.</i></li> </ul>	<ul style="list-style-type: none"> <li>• No new drilling results are reported in this release.</li> </ul>
	<ul style="list-style-type: none"> <li>• <i>If non-core, whether riffled, tube sampled, rotary split, etc and-whether sampled wet or dry.</i></li> </ul>	<ul style="list-style-type: none"> <li>• No new drilling results are reported in this release.</li> </ul>
	<ul style="list-style-type: none"> <li>• <i>For all sample types, the nature, quality and appropriateness of the sample preparation technique.</i></li> </ul>	<ul style="list-style-type: none"> <li>• No new assay results are reported in this release.</li> </ul>
	<ul style="list-style-type: none"> <li>• <i>Quality control procedures adopted for all sub-sampling stages to maximise representivity of samples.</i></li> </ul>	<ul style="list-style-type: none"> <li>• No new assay results are reported in this release.</li> </ul>
	<ul style="list-style-type: none"> <li>• <i>Measures taken to ensure that the sampling is representative of the in-situ material collected, including for instance results for field duplicate/second-half sampling.</i></li> </ul>	<ul style="list-style-type: none"> <li>• No new assay results are reported in this release.</li> </ul>
	<ul style="list-style-type: none"> <li>• <i>Whether sample sizes are appropriate to the grain size of the material being sampled.</i></li> </ul>	<ul style="list-style-type: none"> <li>• No new assay results are reported in this release.</li> </ul>
<b>Quality of assay data and laboratory tests</b>	<ul style="list-style-type: none"> <li>• <i>The nature, quality and appropriateness of the assaying and laboratory procedures used and whether the technique is considered partial or total.</i></li> </ul>	<ul style="list-style-type: none"> <li>• No new assay results are reported in this release.</li> </ul>
	<ul style="list-style-type: none"> <li>• <i>For geophysical tools, spectrometers, handheld XRF instruments, etc, the parameters used in determining the analysis including instrument make and model, reading times, calibrations factors applied and their derivation, etc.</i></li> </ul>	<ul style="list-style-type: none"> <li>• A Gradient Array IP (GAIP) survey was completed with 400m line lengths using a 20m dipole spacing and 50m line spacing as well</li> <li>• Four targeted Dipole-Dipole IP (DDIP) lines were completed with 50m electrode spacing.</li> <li>• A GDD RX-32 16 Channel Receiver and GDD TxII IP Transmitter combination was utilised to provide resistivity and IP data.</li> </ul>
	<ul style="list-style-type: none"> <li>• <i>Nature of quality control procedures adopted (e.g. standards, blanks, duplicates, external laboratory checks) and whether acceptable levels of accuracy (i.e. lack of bias) and precision have been established.</i></li> </ul>	<ul style="list-style-type: none"> <li>• Fender carried out acquisition, processing and quality control of Gradient Array IP and Dipole-Dipole IP and delivered the data daily for processing and interpretation to an independent Geophysicist.</li> </ul>
<b>Verification of sampling and assaying</b>	<ul style="list-style-type: none"> <li>• <i>The verification of significant intersections by either independent or alternative company personnel.</i></li> </ul>	<ul style="list-style-type: none"> <li>• No new drilling results are reported in this release.</li> </ul>
	<ul style="list-style-type: none"> <li>• <i>The use of twinned holes.</i></li> </ul>	<ul style="list-style-type: none"> <li>• N/A</li> </ul>
	<ul style="list-style-type: none"> <li>• <i>Documentation of primary data, data entry procedures, data verification, data storage (physical and electronic) protocols.</i></li> </ul>	<ul style="list-style-type: none"> <li>• Primary data was collected on digital devices and stored on company cloud server.</li> </ul>
	<ul style="list-style-type: none"> <li>• <i>Discuss any adjustment to assay data.</i></li> </ul>	<ul style="list-style-type: none"> <li>• No new assay results are reported in</li> </ul>

Criteria	JORC Code explanation	Commentary
		this release.
<b>Location of data points</b>	<ul style="list-style-type: none"> <li>Accuracy and quality of surveys used to locate drill holes (collar and down-hole surveys), trenches, mine workings and other locations used in Mineral Resource estimation.</li> </ul>	<ul style="list-style-type: none"> <li>All IP points were sited with a standard Garmin GPS with an Easting and Northing accuracy of approximately +/- 5m .</li> </ul>
	<ul style="list-style-type: none"> <li>Specification of the grid system used.</li> </ul>	<ul style="list-style-type: none"> <li>The grid system used is Universal Transverse Mercator (UTM) GDA94 MGA Zone 56.</li> </ul>
	<ul style="list-style-type: none"> <li>Quality and adequacy of topographic control.</li> </ul>	<ul style="list-style-type: none"> <li>Government LiDAR data was used for topographic control.</li> </ul>
<b>Data spacing and distribution</b>	<ul style="list-style-type: none"> <li>Data spacing for reporting of Exploration Results.</li> </ul>	<ul style="list-style-type: none"> <li>No new drilling results are reported in this release.</li> </ul>
	<ul style="list-style-type: none"> <li>Whether the data spacing and distribution is sufficient to establish the degree of geological and grade continuity appropriate for the Mineral Resource and Ore Reserve estimation procedure(s) and classifications applied.</li> </ul>	<ul style="list-style-type: none"> <li>No Mineral Resource or Ore Reserve have been estimated.</li> </ul>
	<ul style="list-style-type: none"> <li>Whether sample compositing has been applied.</li> </ul>	<ul style="list-style-type: none"> <li>No new assay results are reported in this release.</li> </ul>
<b>Orientation of data in relation to geological structure</b>	<ul style="list-style-type: none"> <li>Whether the orientation of sampling achieves unbiased sampling of possible structures and the extent to which this is known, considering the deposit type.</li> </ul>	<ul style="list-style-type: none"> <li>No new assay results are reported in this release.</li> <li>The IP survey lines were designed perpendicular to the main controlling shear.</li> </ul>
	<ul style="list-style-type: none"> <li>If the relationship between the drilling orientation and the orientation of key mineralised structures is considered to have introduced a sampling bias, this should be assessed and reported if material.</li> </ul>	<ul style="list-style-type: none"> <li>No new drilling results are reported in this release.</li> </ul>
<b>Sample security</b>	<ul style="list-style-type: none"> <li>The measures taken to ensure sample security.</li> </ul>	<ul style="list-style-type: none"> <li>No new assay results are reported in this release.</li> </ul>
<b>Audits or reviews</b>	<ul style="list-style-type: none"> <li>The results of any audits or reviews of sampling techniques and data.</li> </ul>	<ul style="list-style-type: none"> <li>No audit or reviews were completed.</li> </ul>

## Section 2: Reporting of Exploration Results

Criteria	JORC Code explanation	Commentary
<b>Mineral tenement and land tenure status</b>	<ul style="list-style-type: none"> <li>Type, reference name/number, location and ownership including agreements or material issues with third parties such as joint ventures, partnerships, overriding royalties, native title interests, historical sites, wilderness or national park and environmental settings.</li> </ul>	<ul style="list-style-type: none"> <li>Exploration Licence (EL) 8479 held by Enmore Gold Pty Ltd, owned by Koonenberry Gold Ltd. Granted 21 October 2016, renewed in 2021 and 2023 and expiring on 21 October 2029 whereon it is eligible for renewal.</li> <li>There are no known Native Title interests in relation to the Property.</li> <li>No royalty interests are in place.</li> </ul>
	<ul style="list-style-type: none"> <li>The security of the tenure held at the time of reporting along with any known impediments to obtaining a licence to operate in the area.</li> </ul>	<ul style="list-style-type: none"> <li>The tenement is current and in good standing.</li> </ul>
<b>Exploration done by other parties</b>	<ul style="list-style-type: none"> <li>Acknowledgment and appraisal of exploration by other parties.</li> </ul>	<ul style="list-style-type: none"> <li>Previous exploration has been conducted by Silver Valley (1974) with Diamond drilling.</li> <li>Getty Oil (1983-84). DD and percussion drilling. Mapping, surface sampling. Good systematic</li> </ul>

Criteria	JORC Code explanation	Commentary
		<p>investigative work. Getty concluded the lateral and width dimensions (of the old mine workings) were limited and would not deliver their target of <math>\pm 5\text{Mt @ }3\text{g/t (482k oz)}</math> Au open-pittable and withdrew. Significant drill intercepts (especially BSD5) were not adequately followed-up. Costean and soil sampling was effective at locating exposed mineralisation at a coarse scale. IP surveying demonstrated potential of electrical geophysical methods on this mineralisation style.</p> <ul style="list-style-type: none"> <li>• Warren Jay Holdings (1996-97) drilled 143 holes, at an average depth of 22m testing for open pittable oxide resources. This work defined the oxide mineralisation potential at Sunnyside, but has not contributed more to definition of mineral potential or underground extraction potential elsewhere on the Property.</li> <li>• Zedex Minerals Ltd (for Providence Gold &amp; Minerals Pty Ltd) drilled 16 diamond holes at an average 124m depth. Many the holes were partially sampled, including in positions where structures were interpreted to intersect. Additional possible commercial commodities (W &amp; Sb) have not been analysed. Vectoring is not possible with available data.</li> <li>• Providence Gold and Minerals Pty Ltd, formerly Warren Jay Holdings Pty Ltd (1994-2022), have completed extensive soil sampling to identify extensive mineral potential along the major and subsidiary structures, as well as an aeromagnetic survey, trenching and underground channel sampling.</li> <li>• A program of 8 RC holes for 976m was completed in 2021 and 7 Diamond holes for 1,440.1m were completed in 2022 testing the Sunnyside Prospect under the ownership of Okapi Resources Ltd.</li> </ul>
<p><b>Geology</b></p>	<ul style="list-style-type: none"> <li>• <i>Deposit type, geological setting, and style of mineralisation.</i></li> </ul>	<ul style="list-style-type: none"> <li>• The Enmore Gold Project is structurally controlled orogenic Au, hosted in the New England Orogen on three major crustal NE trending structures, 20km SSW from Hillgrove Au-Sb Mine. The hydrothermal system was long-lived through tectonic compression &amp; uplift. Two mineralisation styles are broadly described:</li> <li>• An early relatively low grade ductile silicified and sulfidic lode style mineralisation constrained within and generally parallel to mylonite</li> </ul>

For personal use only

Criteria	JORC Code explanation	Commentary
		<p>zones formed on the major NE trending structures.</p> <ul style="list-style-type: none"> <li>• A later and higher-grade mineralisation associated with brittle deformation in dilational and rheologically controlled shoots often oblique to but constrained within the mylonite zones.</li> <li>• Native/free gold occurs as inclusions within mosaic/mosaic-drusy quartz and is concentrated filling cavities within mosaic/mosaic-drusy quartz as overgrowths to pyrite and arseniferous pyrite. Free gold occurs as inclusions within pyrite/arseniferous pyrite lining cavities filled with gold.</li> <li>• Gold occurrences associated with late dilational events generally have a higher proportion of free gold and significantly higher gold grades than the lode style structures.</li> <li>• Enmore mineral occurrences are strongly analogous to Hillgrove.</li> </ul>
<b>Drill hole information</b>	<ul style="list-style-type: none"> <li>• <i>A summary of all information material to the understanding of the exploration results including a tabulation of the following information for all Material drill holes:</i> <ul style="list-style-type: none"> <li>- Easting and northing of the drill hole collar.</li> <li>- Elevation or RL (Reduced Level – elevation above sea level in metres) of the drill hole collar.</li> <li>- Dip and azimuth of the hole.</li> <li>- Down hole length and interception depth.</li> <li>- Hole length.</li> </ul> </li> <li>• <i>If the exclusion of this information is justified on the basis that the information is not Material and this exclusion does not detract from the understanding of the report, the Competent Person should clearly explain why this is the case.</i></li> </ul>	<ul style="list-style-type: none"> <li>• No new drilling results are reported in this release.</li> <li>• No information has been excluded from this release to the best of Koonenberry Gold's knowledge.</li> </ul>
<b>Data aggregation methods</b>	<ul style="list-style-type: none"> <li>• <i>In reporting Exploration Results, weighting averaging techniques, maximum and/or minimum grade truncations (e.g., cutting of high grades) and cut-off grades are usually Material and should be stated.</i></li> <li>• <i>Where aggregate intercepts incorporate short lengths of high-grade results and longer lengths of low grade results, the procedure used for such aggregation should be stated and some typical examples of such aggregations should be shown in detail.</i></li> <li>• <i>The assumptions used for any reporting of metal equivalent values should be clearly stated.</i></li> <li>• <i>These relationships are particularly</i></li> </ul>	<ul style="list-style-type: none"> <li>• No new drilling results are reported in this release.</li> <li>• No new drilling results are reported in this release.</li> <li>• No new drilling results are reported in this release.</li> </ul>

Criteria	JORC Code explanation	Commentary
<b>Relationship between mineralisation widths and intercept lengths</b>	<i>important in the reporting of Exploration Results.</i>	in this release.
	<ul style="list-style-type: none"> <li><i>If the geometry of the mineralisation with respect to the drill hole angle is known, its nature should be reported.</i></li> </ul>	<ul style="list-style-type: none"> <li>No new drilling results are reported in this release.</li> </ul>
	<ul style="list-style-type: none"> <li><i>If it is not known and only the down hole lengths are reported, there should be a clear statement to this effect (e.g., 'down hole length, true width not known').</i></li> </ul>	<ul style="list-style-type: none"> <li>No new drilling results are reported in this release.</li> </ul>
<b>Diagrams</b>	<ul style="list-style-type: none"> <li><i>Appropriate maps and sections (with scales) and tabulations of intercepts should be included for any significant discovery being reported. These should include, but not be limited to a plan view of drill hole collar locations and appropriate sectional views.</i></li> </ul>	<ul style="list-style-type: none"> <li>Appropriate maps for new results have been included.</li> </ul>
<b>Balanced reporting</b>	<ul style="list-style-type: none"> <li><i>Where comprehensive reporting of all Exploration Results is not practicable, representative reporting of both low and high grades and/or widths should be practiced to avoid misleading reporting of Exploration Results.</i></li> </ul>	<ul style="list-style-type: none"> <li>No new drilling results are reported in this release.</li> </ul>
<b>Other substantive exploration data</b>	<ul style="list-style-type: none"> <li><i>Other exploration data, if meaningful and material, should be reported including (but not limited to): geological observations; geophysical survey results; geochemical survey results; bulk samples – size and method of treatment; metallurgical test results; bulk density, groundwater, geotechnical and rock characteristics; potential deleterious or contaminating substances.</i></li> </ul>	<ul style="list-style-type: none"> <li>This Project includes exploration data collected by previous companies. Much of this data has been captured and validated in a GIS database.</li> </ul>
<b>Further work</b>	<ul style="list-style-type: none"> <li><i>The nature and scale of planned further work (e.g., tests for lateral extensions or depth extensions or large-scale step-out drilling).</i></li> </ul>	<ul style="list-style-type: none"> <li>Further exploration will be planned based on data interpretation and geological assessment of prospectivity. This may include surface sampling, geophysical surveys or drilling.</li> </ul>
	<ul style="list-style-type: none"> <li><i>Diagrams clearly highlighting the areas of possible extensions, including the main geological interpretations and future drilling areas, provided this information is not commercially sensitive.</i></li> </ul>	<ul style="list-style-type: none"> <li>See body of this announcement.</li> </ul>